

300
Adjustable Base
owner manual

■ H-120 ■ T/F/Q



MATTRESSFIRM

CONTENTS

Advisory.....	3
Assembly	5
Remote Control Function.....	8
Power Down Operation	9
Troubleshooting.....	10
Warranty	11



READ ALL INSTRUCTIONS BEFORE USING

If adjustable base does not operate or if parts are missing,
call:
844-MATT-FRM

REGISTER YOUR BASE

To register your base, go to:
<https://lpadjustablebeds.com/register>



ADVISORY

IMPORTANT INFORMATION

READ THE FOLLOWING INFORMATION CAREFULLY BEFORE USING THIS PRODUCT



WARNING

FOR OPTIMUM ADJUSTABLE BASE OPERATION, USE A GROUNDED, ELECTRICAL SURGE PROTECTION DEVICE (NOT INCLUDED). FAILURE TO USE A SURGE PROTECTION DEVICE COULD COMPROMISE SAFETY OR CAUSE PRODUCT MALFUNCTION.

ELECTRICAL RATING

Input: 100-240VAC, 50/60Hz, 1.6A.

ELECTRICAL GROUNDING

This product is equipped with a polarized or grounded electrical power cord. The power cord will only fit into a grounded, electrical surge protection device (not included) or a grounded electrical outlet.

WARRANTY WARNING

Do not open any control boxes, motors or remote control devices (with the exception of the remote control and power down battery compartments). The product warranty will be void if these components are tampered with. Do not attempt to alter component wiring or adjust or modify the structure of the product in any way or the warranty will be void. Any repair or replacement of base parts must be performed by authorized personnel.

LUBRICATION

This product is designed to be maintenance free. The lift motors are permanently lubricated and sealed—no additional lubrication is required. Do not apply lubricant to lift motor lead screws or any nylon nuts or the base may inadvertently creep downward from the elevated position.

LOCATION ENVIRONMENT

The level of sound experienced during operation is directly related to the location environment. For example, when a base is located on a hardwood floor with the massage feature in operation, a vibrating tone will be audible.

It is possible to experience vibration or noise from the headboard brackets, headboards or footboards if mounting bolts are not firmly tightened.

SERVICE REQUIREMENTS

Service technicians are not responsible for moving furniture, removing headboards and footboards or any items required to perform maintenance on the base. In the event the technician is unable to perform service due to lack of accessibility, the service call will be billed to the purchaser and the service will have to be rescheduled.

PRODUCT RATINGS

The base lift motors are *not* designed for continuous use. Reliable operation and full life expectancy will be realized as long as the lift motors do not operate any more than two (2) minutes over a twenty (20) minute period, or approximately 10% duty cycle. **Note: *Massage equipped bases are not designed for continuous, extended massage operation. Massage systems are rated for a maximum of 2 hours of use within any 6 hour period.*** Any attempt to circumvent or exceed product ratings will shorten the life expectancy of the product and may void the warranty.

The recommended weight restrictions for these adjustable bases is 850 lb (385 kg) all sizes. The base will structurally support the recommended weight distributed evenly across the head and foot sections. This product is not designed to support or lift this amount in the head or foot sections alone. **Note: *Exceeding the recommended weight restrictions could damage the base and void the warranty.*** Depending on the size and/or model of mattress, the available weight capacity may be less.

For best performance, consumers should enter and exit the adjustable base with the base in the flat (horizontal) position. **DO NOT SIT ON THE HEAD OR FOOT SECTIONS WHILE IN THE RAISED POSITION.**

Motors and electronics have been ETL tested to UL (Underwriters Laboratories) standard UL962. CFR 1633 approved for use with most mattresses. Assembled in USA.

ADVISORY

IMPORTANT INFORMATION

READ THE FOLLOWING INFORMATION CAREFULLY BEFORE USING THIS PRODUCT

SMALL CHILDREN / PETS WARNING

After the base is unboxed, immediately dispose of packaging material as it can smother small children and pets. To avoid injury, children or pets should not be allowed to play under or on the base. Children should not operate this base without adult supervision.

HOSPITAL USE DISCLAIMER

This base is designed for in-home use only. It is not approved for hospital use and does not comply with hospital standards. Do not use this base with tent type oxygen therapy equipment, or use near explosive gases. Manufacturer makes no representation or warranty that the adjustable base constitutes a medical device or is suitable for medical or therapeutic use.

LIFTING/LOWERING MECHANISMS

The lift/lower feature will emit a minimal humming sound during operation. This is normal.

During operation, the lift arm wheels make contact with the platform support of the base. This applies slight tension on the moving components and resonance is reduced to a minimum level. If excessive noise or vibration is experienced, reverse the movement action (up or down) of the base with the remote control. This should realign the base's activating mechanisms to the proper operational position.

FABRIC CLEANING INFORMATION

Spot clean only with water based shampoo or foam upholstery cleaner. Pretest a small, inconspicuous area before proceeding. Do not over wet. Do not use solvents to spot clean. Pile fabrics may require brushing with a non-metallic, stiff bristle brush to restore appearance. Hot water extraction or steam cleaning is not a recommended cleaning method.

To prevent overall soiling, frequent vacuuming or light brushing with a non-metallic stiff bristle brush to remove dust and grime is recommended. When cleaning a spill, blot immediately to remove spilled material. Clean spots or stains from the outside to the middle of the affected area to prevent circling. Use a professional furniture cleaning service when an overall soiled condition is apparent.

FCC COMPLIANCE

The equipment has been tested and found to comply with the limits for a Class B digital device, pursuant to Part 15 of the FCC Rules. These limits are designed to provide reasonable protection against harmful interference when the equipment is operated in a residential environment. This equipment generates, uses, and can radiate radio frequency energy and, if not installed and used in accordance with the instruction manual, may cause harmful interference to radio communications. However, there is no guarantee that interference will not occur in a particular installation. If this equipment does cause harmful interference to radio or television reception, which can be determined by turning off the equipment off and on, the user is encouraged to try to correct the interference by one or more of the following measures:

- Reorient or relocate the receiving antenna.
- Increase the separation between the equipment and receiver.
- Connect the equipment into an outlet on a circuit different from that to which the receiver is connected.
- Consult the dealer or an experienced radio/TV technician for help.

This device complies with Part 15 of the FCC rules. Operation is subject to the following conditions: (1) This device may not cause harmful interference, and (2) this device must accept any interference received, including interference that may cause undesired operation.

FCC Caution: Any changes or modifications not expressly approved by the party responsible for compliance could void the user's authority to operate this equipment.

Radio Frequency = 2.4 GHz.

ASSEMBLY

To assemble adjustable base, complete the following procedure:

STEP 1

Place adjustable base shipping carton on solid, level surface. Remove top section of shipping carton.

Remove hardware box. Cut orange zip-tie from electrical power supply (attached to base frame). **CAUTION: EXERCISE CAUTION WHEN USING SHARP INSTRUMENTS.**

Before discarding any packing materials, verify the following items are included:

- (4) Pin-adjustable Bed legs
- (1) Remote Control
- (3) AAA Batteries
- (1) Mattress Retainer (attached to base frame with (2) orange zip-ties)
- (1) Quick Setup Guide



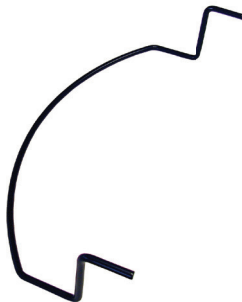
4 - LEGS



REMOTE CONTROL



3 - AAA BATTERIES



MATTRESS RETAINER



QUICK SETUP GUIDE

ASSEMBLY

STEP 2

Extend power cord out head end of base.

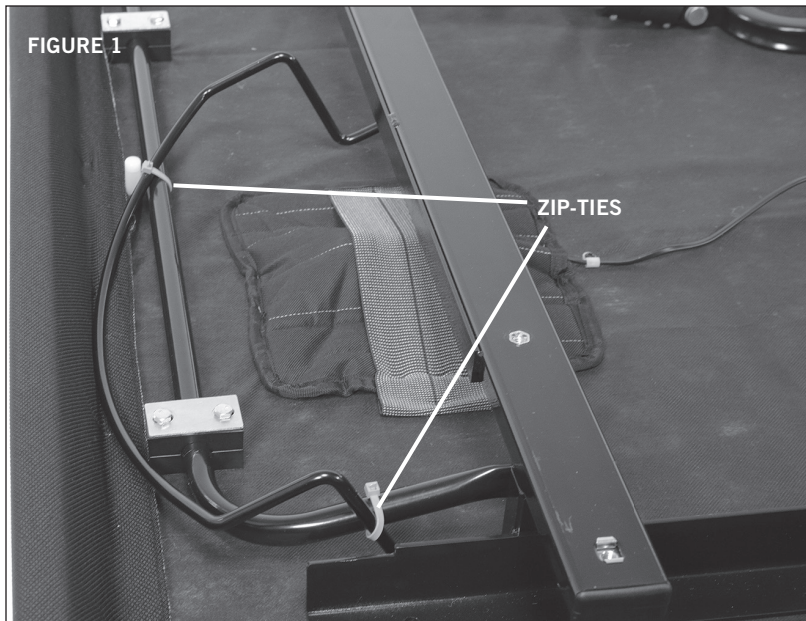
STEP 3

Cut (2) orange zip-ties securing mattress retainer (FIGURE 1). Set mattress retainer aside. **CAUTION: EXERCISE CAUTION WHEN USING SHARP INSTRUMENTS.**



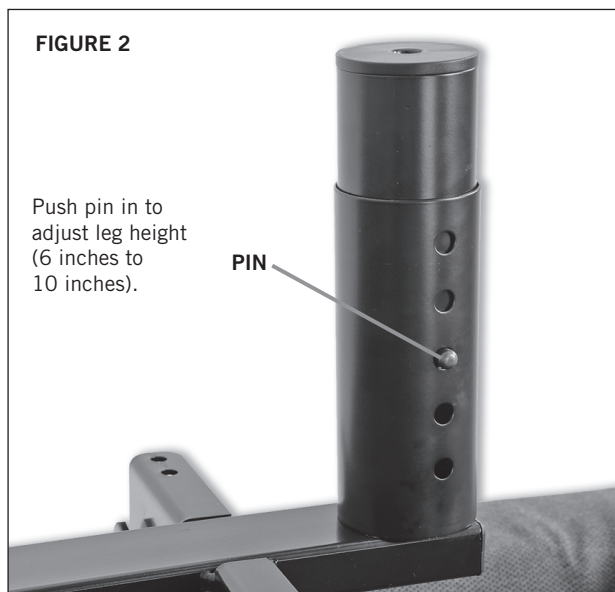
WARNING

POWER CORDS MUST NOT INTERFERE WITH ANY ADJUSTABLE BASE MECHANISMS.



STEP 4

Screw (4) corner legs into the threaded inserts at the corners of the base frame (FIGURE 2). Hand tighten securely.



ASSEMBLY

STEP 5

Rotate the base in the bottom shipping carton onto its edge, and then rotate the base over onto its legs.

STEP 6

Remove remaining packaging and any protective film.

STEP 7

Plug the base into an electrical power outlet. **Note: An electrical surge protection device is recommended, but not included.**

STEP 8

Install (3) AAA batteries (included) in remote control. Operate remote control to verify base functions properly (refer to separate Syncing Guide). If base does not operate, see the Troubleshooting section.

STEP 9

Lower base to flat position.

STEP 10

Install the mattress retainer by placing the mattress retainer ends in the holes at the foot end of the base. Make sure horizontal bar section is flush against the base (FIGURE 4).

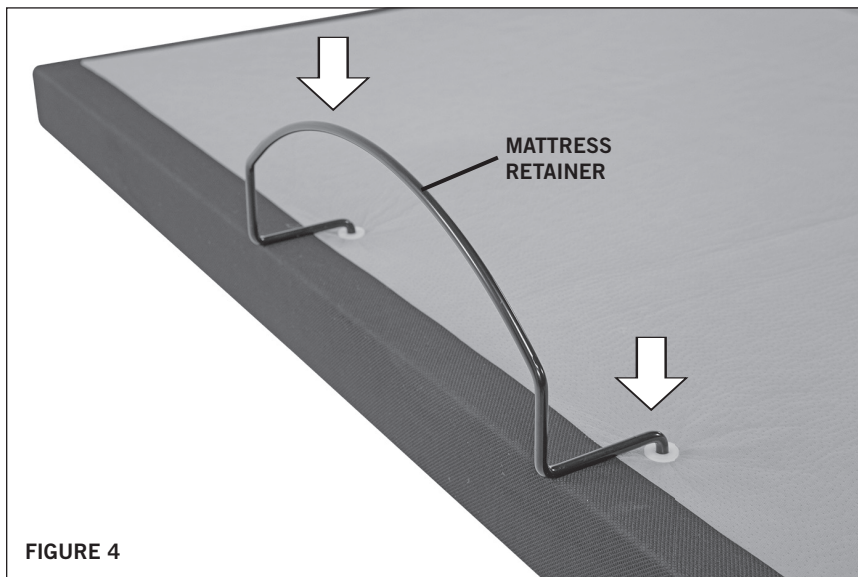
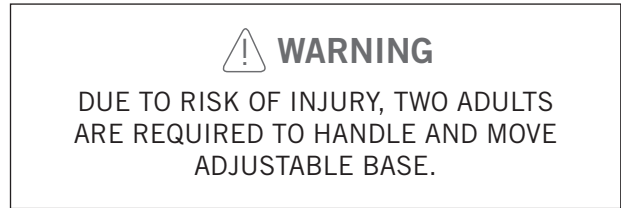


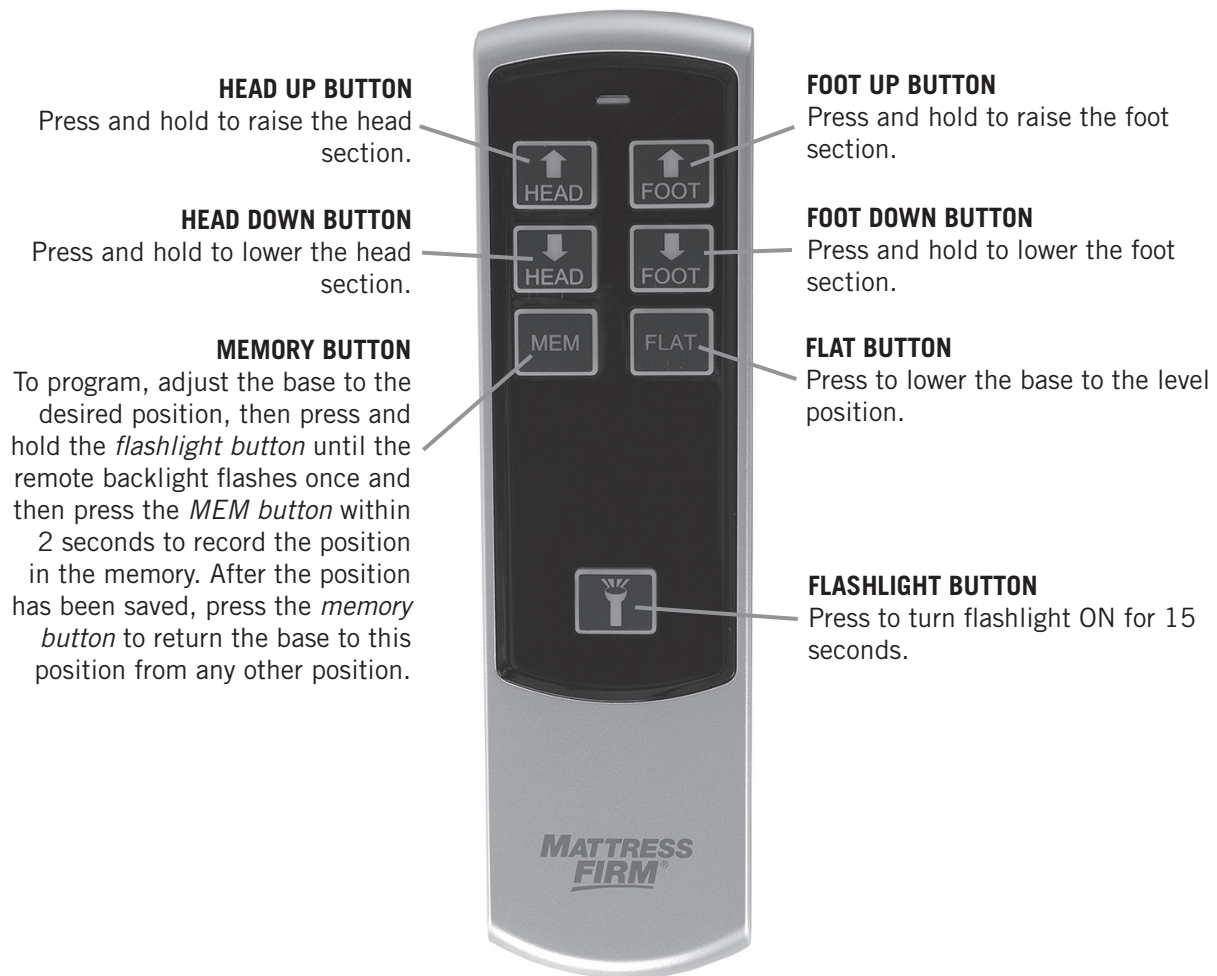
FIGURE 4

STEP 11

Place mattress on base to complete assembly.



REMOTE CONTROL FUNCTION



NOTE

REMOTE CONTROL REQUIRES (3) AAA SIZE BATTERIES. TO CONSERVE BATTERY LIFE, THE TRANSMITTER TURNS OFF ALL FUNCTIONS WHEN ANY BUTTON IS PRESSED FOR MORE THAN 50 SECONDS.

PRESS & HOLD TO ONE TOUCH

To change remote control functions from “press & hold” to “one touch”, simultaneously press the **MEMORY** and **FLASHLIGHT** buttons until the remote backlight flashes once, then release the buttons. Your base is now set to “one touch.”

When in “one touch” mode:

Memory button

Press and release (one touch) button. Base will adjust to the programmed position. Press any other button to stop the base during movement.

Flat button

Press and release (one touch) button. Base will adjust base to level position. Press any other button to stop the base during movement.

To revert back to **factory settings**, simultaneously press and hold the **FLASHLIGHT** button and the **FLAT** button until the remote backlight flashes once, then release the buttons. Your base is now set to factory settings.

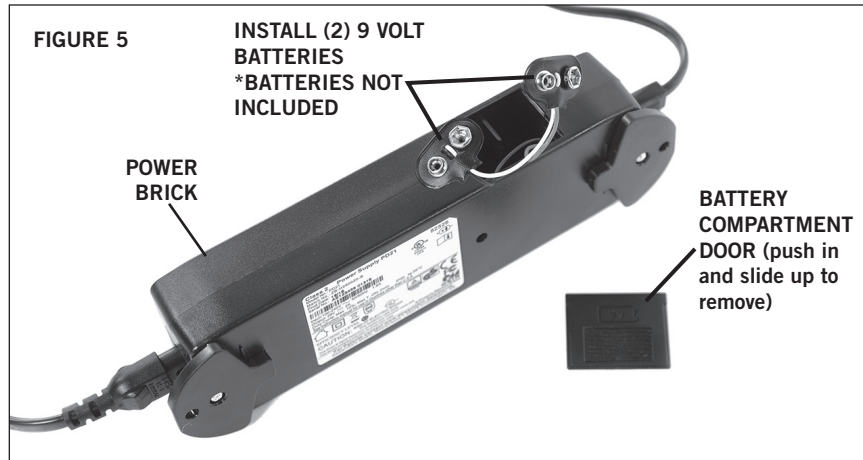
POWER DOWN OPERATION

Use this procedure to lower the base to flat during a power outage. Do NOT put batteries in power down device until necessary for use.

Note: Power down device uses 9-volt alkaline batteries, which are not included.

STEP 1

Insert (2) 9-volt alkaline batteries into the power brick (FIGURE 5).



STEP 2

Press the FLAT BUTTON on the remote control to adjust the base to the level position.

STEP 3

Remove batteries from power brick and discard.

Note: Batteries are good for only one use.

When power is restored from outage, base is ready to resume normal operation.

TROUBLESHOOTING

If the adjustable base fails to operate, investigate the symptoms and possible solutions provided in the chart below:

SYMPTOM	SOLUTION
No features of the base will activate.	<ul style="list-style-type: none"> • Program the remote control (see <i>Remote Control Programming</i> section of this manual for programming procedures). • Unplug power cord, wait 30 seconds and plug in to reset electronic components. • Electrical circuit breaker may be tripped. Check electrical service breaker box to verify. • Defective surge protection device or electrical outlet. Test outlet by plugging in another working appliance. • If the base was operated over the rated duty cycle, thermal switch opens. Wait 30 minutes before trying to operate the base. Once the base resumes normal operation, do not exceed the duty cycle.
Remote control backlight does not illuminate.	<ul style="list-style-type: none"> • Replace batteries in remote control.
Head or foot section will elevate, but will not return to the horizontal (flat) position.	<ul style="list-style-type: none"> • Base mechanism may be obstructed. Elevate base and check for obstruction. Remove obstruction. • Head section may be too close to the wall.
Excessive motor noise.	<ul style="list-style-type: none"> • If base is located on hard surface flooring, place carpet pieces or rubber caster cups under each leg or caster of the base. • Elevate the head or foot section a short distance (with the remote control) to realign the lift/lower mechanisms with the base support platform. • Verify that base is not positioned against a wall, nightstand, or other object that may cause vibration or noise. • If base is installed over a base frame, verify motors are not causing base frame (or base frame components) to vibrate.

2 YEAR AND 10 YEAR LIMITED WARRANTY

In this warranty: “**Adjustable base**” means the adjustable bed foundation sold by L&P to the dealer. The “adjustable base” does not include the mattress. “**L&P**” means Leggett & Platt, Incorporated. “**Purchaser**” and “**You**” both mean the consumer who is the original purchaser of this adjustable base made by L&P. This warranty is not transferrable. “**Warranty Commencement Date**” means either (i) the date You purchased a new and unused L&P adjustable base or (ii) the date of manufacture of this adjustable base if You purchased an L&P adjustable base that has been used as floor or display model. L&P warrants this adjustable base to You on the terms and over the reducing periods of time set out below. All warranty claims require notice from You to be given to L&P in the manner set out below, and to be received by L&P inside the applicable warranty time period.

1ST AND 2ND YEAR FULL WARRANTY

For the first and second year from the Warranty Commencement Date, your adjustable base is warranted against non-excluded defects in L&P’s workmanship or materials. During the first and second year from the Warranty Commencement Date, L&P will repair or replace (at no cost to You) any defective adjustable base part, and L&P will pay all authorized labor and transportation costs associated with the repair or replacement of any parts found to be defective.

3RD YEAR TO END OF 10TH YEAR LIMITED WARRANTY

Starting in the third year from the Warranty Commencement Date and through to the end of the 10th year from the Warranty Commencement Date, L&P will replace steel and mechanical base parts found to be defective and not excluded by this warranty. **This warranty does not cover any electronics, electrical components, drive motors or massage motors.** You are responsible to pay all service and transportation costs related to receiving and installation of the new part and a portion of the cost of the replacement steel and mechanical part, based on the number of months that the base has been owned by you since the third anniversary of the Warranty Commencement Date. By the end of the 10th year, no portion of the replacement cost is covered by L&P. You will be required to pay 1/8th of the then current replacement cost of the part multiplied by the number of years past the second year from the Warranty Commencement Date. This portion is calculated using the following formula: Cost of the part divided by 8 [being the number of years in years 3 to 10 inclusive], multiplied by the number of years you have owned the base since the end of the first 2 years. For example, if you make a claim for a part eligible for this warranty in the 5th year since the Warranty Commencement Date, you would be responsible for paying: \$100 part cost divided by 8, multiplied by 3 = \$37.50.

ADDITIONAL TERMS AND CONDITIONS

This warranty requires notice to be given to L&P of any claim for repairs or replacement parts.

EXCLUSIONS:

This warranty does not apply; (a) to any damage caused by You; (b) if there has been any repair or replacement of adjustable base parts by an unauthorized person; (c) if the adjustable base has been mishandled (whether in transit or by other means), subjected to physical or electrical abuse or misuse, or otherwise operated in any manner inconsistent with the operation and maintenance procedures outlined in the Owner’s Manual and this warranty; (d) to damage to mattresses, fabric, cables, electrical cords or items supplied by dealers (contact the dealer for warranty information on these items); (e) if there has been any modification of the adjustable base **without prior written consent by L&P**; or (f) to costs for unnecessary service calls, including costs for in-home service calls solely for the purpose of educating You about the adjustable base or finding a satisfactory power connection.

This warranty will be void if either the recommended weight restriction is not followed (refer to the advisory section of the Owner’s Manual) or if You sell or give or transfer the base to another person.

Any repairs to or replacement to Your adjustable base or its components under the terms of this limited warranty does not extend the applicable warranty from the Warranty Commencement Date. This time limitation may not apply in some jurisdictions, including the Province of Quebec.

The decision to repair or to replace defective parts under this warranty shall be made, or cause to be made, by L&P at its option and in its sole discretion.

Repair or replacement shall be the sole remedy of the Purchaser. There shall be no liability on the part of L&P for any special, indirect, incidental, or consequential damages or for any other damage, claim, or loss not expressly covered by the terms of this warranty.

This limited warranty does not include reimbursement for inconvenience, removal, installation, setup time, loss of use, shipping, or any other costs or expenses. L&P and its service technicians will not be responsible for moving furniture or any other items not attached to the adjustable base in order to perform service on the adjustable base.

It is the sole responsibility of You to provide adequate space and accessibility to the adjustable base. In the event that the technician is unable to perform service due to lack of accessibility, the service call will be billed to You and the service will have to be rescheduled.

L&P makes no other warranty whatever, express or implied, and all implied warranties of merchantability and fitness for a particular purpose are disclaimed by L&P and excluded from this agreement.

Some American States do not allow the exclusion or limitation of incidental or consequential damages, so the above limitation or exclusion may not apply to You.

This warranty gives You specific legal rights, and You may also have other rights, which may vary from jurisdiction to jurisdiction. This warranty is valid in all 50 American States, the District of Columbia, Puerto Rico, and all 10 Provinces and 3 Territories of Canada.

For customer service under this limited warranty, give notice to L&P by mail, phone, email or online to the addresses set out below:

Mattress Firm Customer Service

toll free phone: 844-MATT-FRM

online: mattressfirm.com

**PLEASE DO NOT CONTACT YOUR RETAIL DEALER
OR ANY OTHER SERVICE PERSONNEL**

NATIONWIDE CUSTOMER SERVICE toll free: (844) MATT-FRM

© 2019 Mattress Firm, Inc.

