

TSI AIRASSURE PM2.5 INDOOR AIR QUALITY MONITOR FIRMWARE UPDATE INSTRUCTIONS

APPLICATION NOTE PM2.5-005 (US)

The AirAssure™ instrumentation firmware can be upgraded in the field. This will require a micro USB cable (not provided), personal computer and TSI AirAssure Update firmware utility program.

Follow the steps below for firmware update instructions.

Separating Cover from Base

To access the USB connector, remove the cover of the monitor by pressing fingers firmly on bottom of device cover, squeeze, and pull outwards.




TSI and TSI logo are registered trademarks of TSI Incorporated.
AirAssure is a trademark of TSI Incorporated.



Attaching USB Cable

Connect the unit to your personal computer using a Micro USB cable (not provided). The USB connector is on the left-hand side of the device.

	CAUTION
	Use caution when plugging in cable, as excessive perpendicular force may damage the connection.

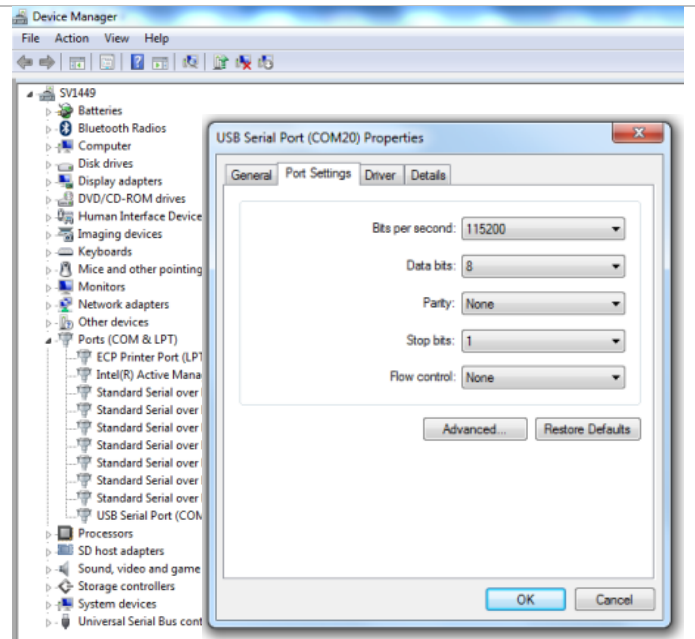


COM Port Setup

The USB connection is a virtual COM port running at:

Bits per second 115200
Data bits 8
Parity None
Stop bits 1
Flow control None

- To determine which COM port is being used, go into the **Device Manager** to view which COM port is selected when the USB cable is connected to the AirAssure monitor (**USB Serial Port**).
- To view or edit **Port Settings**, double-click on the selected COM port.
- Click **OK** to exit.



Acquiring AirAssure Update Firmware

The AirAssure firmware update utility program can be found on the AirAssure™ PM2.5 Indoor Air Quality Monitor Get Started web page (<http://www.tsi.com/airassure-get-started-en>).

Follow the installation and setup instructions for acquiring the latest firmware.

Run AirAssure Firmware Update Utility Program

Once the AirAssure Update utility program has been downloaded, a shortcut will appear on your desktop.



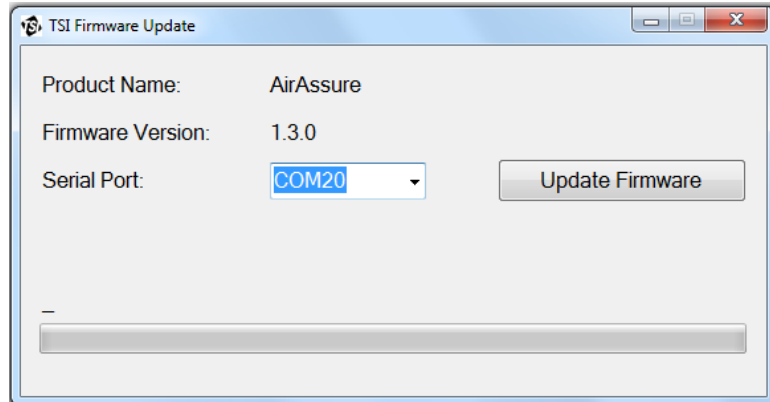
1. Click on the shortcut icon to run the program.

2. Enter the Serial Port number determined from the **COM Port Setup** step above.

3. Click **Update Firmware**.

A progress bar will be shown, and the entire process takes approximately six minutes.

The updated firmware revision will appear on the display upon startup.



UNDERSTANDING, ACCELERATED

TSI Incorporated – Visit our website www.tsi.com for more information.

USA Tel: +1 800 874 2811
UK Tel: +44 149 4 459200
France Tel: +33 1 41 19 21 99
Germany Tel: +49 241 523030

India Tel: +91 80 67877200
China Tel: +86 10 8219 7688
Singapore Tel: +65 6595 6388