



# SRH840A

## User's Guide

The Shure professional studio headphones, SRH840A, user guide.  
Version: 3.2 (2022-A)

---

# Table of Contents

<b>SRH840A User's Guide</b>	<b>3</b>	Furnished Accessories	5
		Replacement Parts	5
<b>Professional Reference Headphones</b>	<b>3</b>	<b>SAFETY PRECAUTIONS</b>	<b>5</b>
General Description	3	CAUTION	5
<b>Care and Maintenance</b>	<b>3</b>	WARNING	6
		WARNING	6
<b>Cable Lock</b>	<b>3</b>	<b>LIMITED WARRANTY</b>	<b>6</b>
<b>Storage</b>	<b>3</b>	Service Centers	7
<b>Accessories</b>	<b>5</b>	<b>Certifications</b>	<b>7</b>

---

# SRH840A

## User's Guide

---

## Professional Reference Headphones

### General Description

Building on 90 years of pro audio experience, the SRH840A Headphones from Shure deliver world-class audio performance, comfort, and durability to professional audio engineers and musicians. Reference-quality frequency response and 40 mm neodymium dynamic drivers combine with total comfort and durability to provide the ultimate listening experience. The replaceable cable and ear cushions ensure a long-lasting lifetime of use.

- 40mm neodymium driver optimized for studio recording and critical listening
- Closed-back, circumaural design for superior isolation in noisy environments
- Adjustable, collapsible headband provides comfort and portability
- Replacement earcup pads included to ensure long product life
- 3 m (10 ft.) detachable cable provides plenty of length and easy storage and replacement
- Carrying Bag protects headphones when on the go or not in use

---

## Care and Maintenance

To clean the headphones, use a soft, damp cloth.

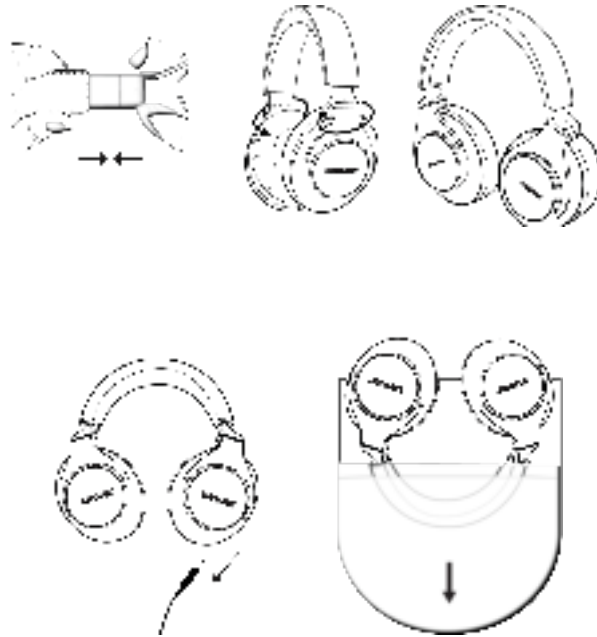
**CAUTION:** Do not use cleansers that contain solvents. Keep liquid and foreign objects out of the driver openings.

---

## Cable Lock



# Storage



## Transducer Type

Dynamic, Neodymium magnet

## Driver Size

40 mm

## Frequency Response

5 to 25,000 Hz

## Sensitivity

@ 1 kHz

96 dB/mW

## Impedance

@ 1 kHz

38  $\Omega$

## Maximum Input Power

400 mW

## Weight

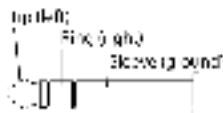
273 g (9.63 oz.)

## Connector

Gold-plated 3.5 mm (1/8") stereo mini jack plug with 6.35 mm (1/4") threaded adapter

## Cable

3 m, (9.8 ft) straight, detachable, non-PVC, Oxygen-free copper (OFC)



## Accessories

### Furnished Accessories



<b>Carrying Pouch for Professional Headphones</b>	HPACP1
<b>Replacement 3.5mm Bayonet Headphone Audio Cable</b>	SRH-CABLE

### Replacement Parts

<b>Replacement Ear Cushions for SRH840A</b>	SRH840A-PADS
<b>Universal 3.5mm Bayonet Headphone Communication Cable</b>	RMCH1-UNI
<b>Replacement Coil Cable Assembly for SRH Headphones</b>	SRH-CABLE-COILED

## SAFETY PRECAUTIONS

The possible results of incorrect use are marked by one of the two symbols—"WARNING" and "CAUTION"—depending on the imminence of the danger and the severity of the damage.

	WARNING: Ignoring these warnings may cause severe injury or death as a result of incorrect operation.
	CAUTION: Ignoring these cautions may cause moderate injury or property damage as a result of incorrect operation.

## CAUTION

- Never disassemble or modify the device, as failures may result.
- Do not subject to extreme force and do not pull on the cable or failures may result.
- Keep the product dry and avoid exposure to extreme temperatures and humidity.

## WARNING

- If water or other foreign objects enter the inside of the device, fire or electric shock may result.
- Do not attempt to modify this product. Doing so could result in personal injury and/or product failure.

This device is able to produce sound volume higher than 85 dB SPL. Please check your maximum allowed continuous noise exposure level based on your national employment protection requirements.

## WARNING

**LISTENING TO AUDIO AT EXCESSIVE VOLUMES CAN CAUSE PERMANENT HEARING DAMAGE. USE AS LOW A VOLUME AS POSSIBLE.** Over exposure to excessive sound levels can damage your ears resulting in permanent noise-induced hearing loss (NIHL). Please use the following guidelines established by the Occupational Safety Health Administration (OSHA) on maximum time exposure to sound pressure levels before hearing damage occurs.

<b>90 dB SPL</b> at 8 hours	<b>95 dB SPL</b> at 4 hours	<b>100 dB SPL</b> at 2 hours	<b>105 dB SPL</b> at 1 hour
<b>110 dB SPL</b> at ½ hour	<b>115 dB SPL</b> at 15 minutes	<b>120 dB SPL</b> Avoid or damage may occur	

## LIMITED WARRANTY

Shure Incorporated ("Shure") hereby warrants to the original consumer purchaser only that, except as otherwise specified below, this product will be free in normal use of any defects in materials and workmanship for a period of two (2) years from the consumer's original date of purchase directly from Shure or from a Shure-authorized reseller.

Any rechargeable batteries contained in or packaged with this product are so warranted for a period of one (1) year from the consumer's original date of purchase. However, rechargeable batteries are consumable and their capacity will be reduced over time based on temperature, amount of time in storage, charging cycles, and other factors; hence reduction in battery capacity does not constitute a defect in material or workmanship.

At its sole option, Shure will repair or replace the defective product and promptly return it to you. In order for this warranty to be valid, the consumer must, at the time the product is returned, provide proof of purchase in the form of the original purchase receipt directly from Shure or from a Shure-authorized reseller. If Shure elects to replace the defective product, then Shure reserves the right to replace the defective product with another product of the same model or a model of at least comparable quality and features in Shure's sole determination.

If you believe this product is defective within the warranty period, carefully repack the unit, insure it and return it with proof of purchase, postage prepaid, to Shure Incorporated, Attention: Service Department, at the address below.

Outside of the United States, return the product to your dealer or Authorized Service Center. Addresses are listed on [www.Shure.com](http://www.Shure.com) or can be obtained by contacting Shure at the address listed below.

This warranty is not transferable. This warranty does not apply in cases of abuse or misuse of the product, use contrary to Shure's instruction, ordinary wear and tear, an act of God, negligent use, purchase from a party other than Shure or a Shure-authorized reseller, unauthorized repair, or modification of the product.

ALL IMPLIED WARRANTIES OF MERCHANTABILITY OR FITNESS FOR A PARTICULAR PURPOSE ARE HEREBY DISCLAIMED TO THE EXTENT PERMITTED UNDER APPLICABLE LAWS AND, TO THE EXTENT NOT PERMITTED, ARE HEREBY LIMITED TO THE DURATION AND TERMS OF THIS WARRANTY. SHURE ALSO HEREBY DISCLAIMS ALL LIABILITY FOR INCIDENTAL, SPECIAL, OR CONSEQUENTIAL DAMAGES.

Some states do not allow limitations on how long an implied warranty lasts, or the exclusion or limitation of incidental or consequential damages, so the above limitation may not apply to you. This warranty gives you specific legal rights, and you may have other rights which vary from state to state.

This warranty does not restrict the rights of the consumer mandated under applicable laws.

THIS WARRANTY SUPERSEDES ALL OTHER WARRANTIES THAT ARE ASSOCIATED OR INCLUDED WITH THIS PRODUCT, EXCEPT THAT ANY SOFTWARE CONTAINED IN OR PACKAGED WITH THIS PRODUCT IS EXCLUDED FROM THIS WARRANTY AND INSTEAD SHALL BE COVERED BY THE WARRANTY, IF ANY, PROVIDED IN SHURE'S END USER LICENSE AGREEMENT ACCOMPANYING SUCH SOFTWARE.

## Service Centers

### **United States, Canada, Latin America, Caribbean**

Shure Incorporated  
Attn: Service Department  
945 Chaddick Dr.  
Wheeling, IL 60090-6449 U.S.A.

### **Europe, Middle East, and Africa**

Shure Europe GmbH  
Attn: Service  
Jakob-Dieffenbacher-Str. 12,  
75031 Eppingen, Germany

### **Indonesia Service Center Resmi:**

Jakarta Hotline (021) 612 6388  
Medan (061) 6612550  
Surabaya (031) 5032219  
Jogjakarta (0274) 371710  
Denpasar (0361) 766788  
Makasar (0411) 324652

---

## Certifications

This product meets the Essential Requirements of all relevant European directives and is eligible for CE marking.

The CE Declaration of Conformity can be obtained from: [www.shure.com/europe/compliance](http://www.shure.com/europe/compliance)

Authorized European representative:

Shure Europe GmbH  
Global Compliance  
Jakob-Dieffenbacher-Str. 12  
75031 Eppingen, Germany  
Phone: +49-7262-92 49 0  
Email: [info@shure.de](mailto:info@shure.de)  
[www.shure.com](http://www.shure.com)