

**AW-SF100**  
**Standalone Version**

**Installation Procedures**

**Revision 4.05 June. 21, 2019**

- 1. INTRODUCTION ..... 3**
- 2. SETTING THE REMOTE CAMERA ..... 4**
- 3. INSTALLATION ..... 7**
- 4. STARTUP AND EXIT ..... 20**
  - 4.1. Starting the Software ..... 20
  - 4.2. Exiting the Software ..... 20
- 5. ABOUT THE OPERATION MANUAL ..... 20**
- 6. ABOUT ACTIVATION ..... 20**

# 1. Introduction

---

This manual describes the installation procedures of the Auto Tracking Software (Standalone version) that runs on a Windows PC.

## **Operating Environment**

The below-mentioned environment is necessary for using this software:

- Required Spec

- CPU: Core i5-3320M (2.60 GHz) or above

- Memory: 4 GB or above

- Display: 1600 x 900 or above

- OS: Windows 7 Professional (SP1), Ultimate (SP1) 32 bit/64 bit

- Windows 8.1 32 bit/64 bit

- Windows 10 32 bit/64 bit

- Recommended Spec

- CPU: Core i7-4710MQ (2.50 GHz) or above

- Memory: 8 GB or above

- Display: 1920 x 1080 or above

- OS: Windows 7 Professional (SP1), Ultimate (SP1) 64 bit

- Windows 8.1 64 bit

- Windows 10 64 bit

- In case of human body detection by deep learning

- NVIDIA GPU

- Pascal architecture

- NVIDIA GeForce GTX 1050Ti or higher

- NVIDIA Quadro P2000 or higher

- Turing architecture

- NVIDIA GeForce RTX 2060 or higher

- Or

- Core i 7 CPU with more than 4 physical cores

\* If using a GeForce RTX for the GPU, please use Windows 10 for the operating system.

- Remote camera

- Panasonic remote camera

- AW-UE150

- AW-UE70

- AW-HE130

- AW-HE40

- AW-HE42

### <Notes>

- Use the latest version of the remote camera firmware. You can download the firmware from the following Website:

- <http://pro-av.panasonic.net/en/>

- Panasonic recommends a wired connection between the PC and remote camera. In the case of a wireless connection, sufficient tracking performance may not be achieved.
- When using GPU for human body detection through deep learning, you must install CUDA Toolkit in the server pc.  
 When using a GPU with Pascal architecture, please download and install CUDA Toolkit 8.0 from the website below.  
<https://developer.nvidia.com/cuda-80-ga2-download-archive>  
 When using a GPU with Turing architecture, please download and install CUDA Toolkit 10.1 from the website below.  
<https://developer.nvidia.com/cuda-10.1-download-archive>

## 2. Setting the Remote Camera

---

Before using this software, make settings on the remote camera main unit.

As a method of acquiring images from remote cameras, it is possible to select either acquisition by JPEG image or acquisition by H.264 stream.

When using acquisition by JPEG image, set the [Image capture type] to JPEG on the [Settings – Camera] screen of this software.

When using acquisition by H.264 stream, set the [Image capture type] to H.264 on the [Settings – Camera] screen of this software.

- Setting of AW-UE150

Tracking performance is higher when using acquisition with JPEG image.

- When acquiring images with JPEG images

Change [Setup] -> [Video over IP] -> [JPEG (1)] to the following settings on the web page of the camera.

Image capture size: 1280 x 720 or higher

Refresh interval: 15 fps or higher (NTSC), 12.5fps or higher (PAL)

- When acquiring images with H.264 stream

Change [Setup] -> [Video over IP] -> [H.264 (1)] to the following settings on the web page of the camera.

H.264 transmission: On

Image capture size: 1280 x 720 or higher

Transmission priority : Frame rate

Frame rate: 15 fps or higher (NTSC), 12.5fps or higher (PAL)

- Setting of AW-HE130

Tracking performance is higher when using acquisition with H.264 stream.

- When acquiring images with JPEG images

Set each item as follows on the web page of the camera.

Initial display settings for "Live" page

Stream: JPEG(1)

Refresh interval (JPEG) : 15 fps or higher (NTSC), 12.5fps or higher (PAL)

JPEG(1)

JPEG transmission: On

Image capture size: 1280x720

H.264(1)

H.264 transmission: Off

H.264(2)

H.264 transmission: Off

H.264(3)

H.264 transmission: Off

H.264(4)

H.264 transmission: Off

- When acquiring images with H.264 stream

Change [Setup] -> [Image / Audio] -> [H.264 (1)] to the following settings on the web page of the camera.

H.264 transmission: On

Image capture size: 1280 x 720 or higher

Transmission priority : Frame rate

- Setting of AW-UE70 / AW-HE42

Tracking performance is higher when using acquisition with JPEG image.

- When acquiring images with JPEG images

Change [Setup] -> [Image / Audio] -> [JPEG (1)] to the following settings on the web page of the camera.

Image capture size: Priority Mode setting is IP: 1280 x 720

When priority mode is set to other than IP mode: 640 x 360

Refresh interval: 15 fps or higher (NTSC), 12.5fps or higher (PAL)

Image quality: Normal

- When acquiring images with H.264 stream

Change [Setup] -> [Image / Audio] -> [H.264 (1)] to the following settings on the web page of the camera.

H.264 transmission: On

Image capture size: 1280 x 720 or higher

Transmission priority : Frame rate

Frame rate: 15 fps or higher (NTSC), 12.5fps or higher (PAL)

- Setting of AW-HE40

Tracking performance is higher when using acquisition with JPEG image.

- When acquiring images with JPEG images

Change [Setup] -> [Image / Audio] -> [JPEG (1)] to the following settings on the web page of the camera.

Image capture size: Priority Mode setting is IP: 1280 x 720

When priority mode is set to other than IP mode: 640 x 360

Refresh interval: 15 fps or higher (NTSC), 12.5fps or higher (PAL)

Image quality: Normal

- When acquiring images with H.264 stream

Change [Setup] -> [Image / Audio] -> [H.264 (1)] to the following settings on the web page of the camera.

H.264 transmission: On

Image capture size: 1280 x 720 or higher

Transmission priority : Frame rate

Frame rate: 15 fps or higher (NTSC), 12.5fps or higher (PAL)

### 3. Installation

---

Please Install the Software, according to the following procedure.

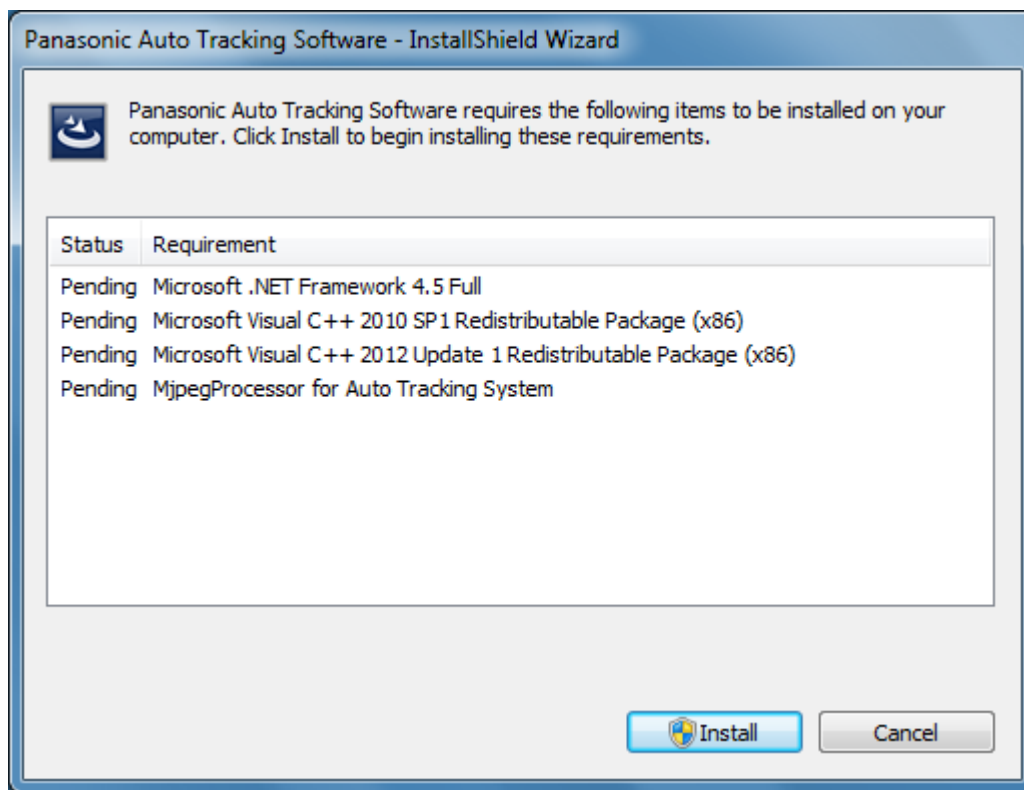
<Notes>

- To install the software, log in as a user having the Administrator authority.
- Please continue with the process by clicking the "Yes" when the confirmation of the user account control is displayed during installation.

1. Right click on Setup.exe and select "Run as administrator".

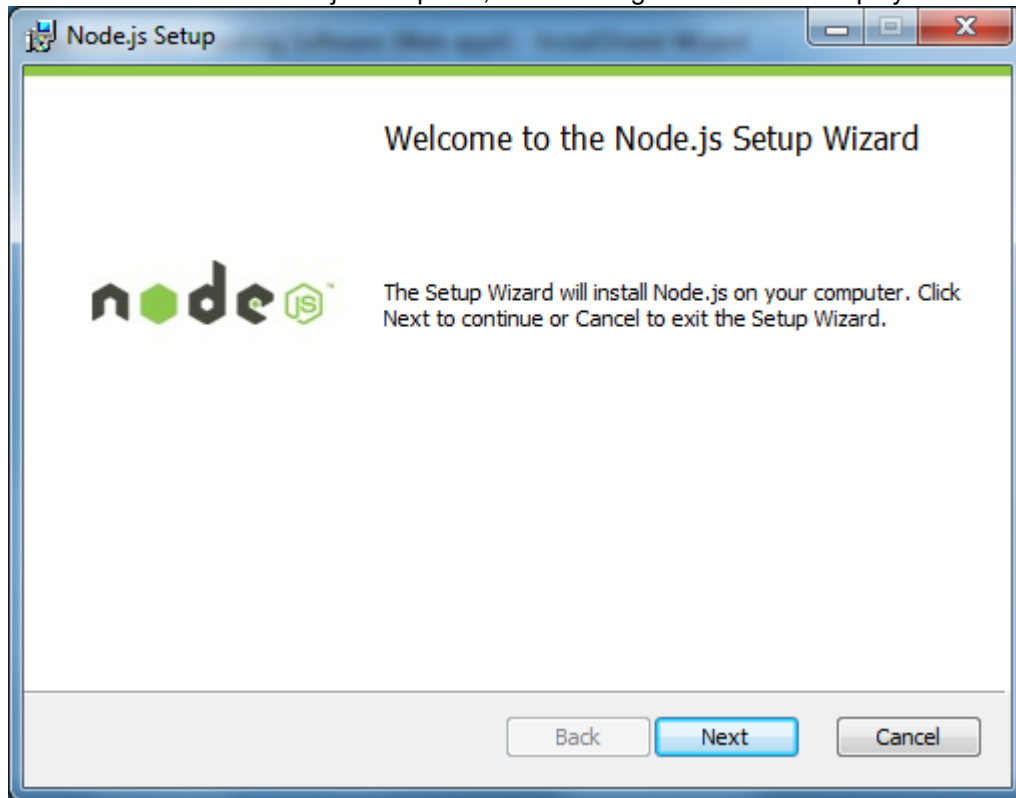
List of components that will be installed will be displayed.

Depending on the OS and PC, some of the components may not appear when they are not required to be installed

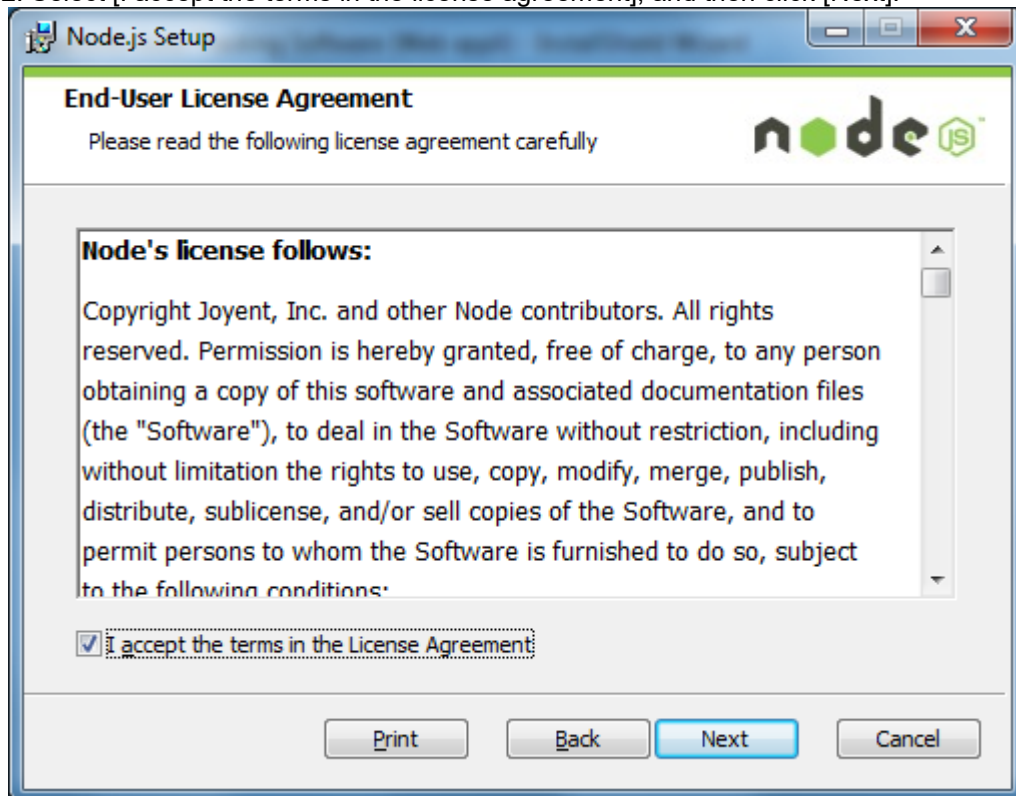


2. Click the [Install] button, a confirmation screen of the user account control will be displayed. Click [Yes] to continue the process.

3-1. If the installation of Node.js is required, the following screen will be displayed. Click [Next].

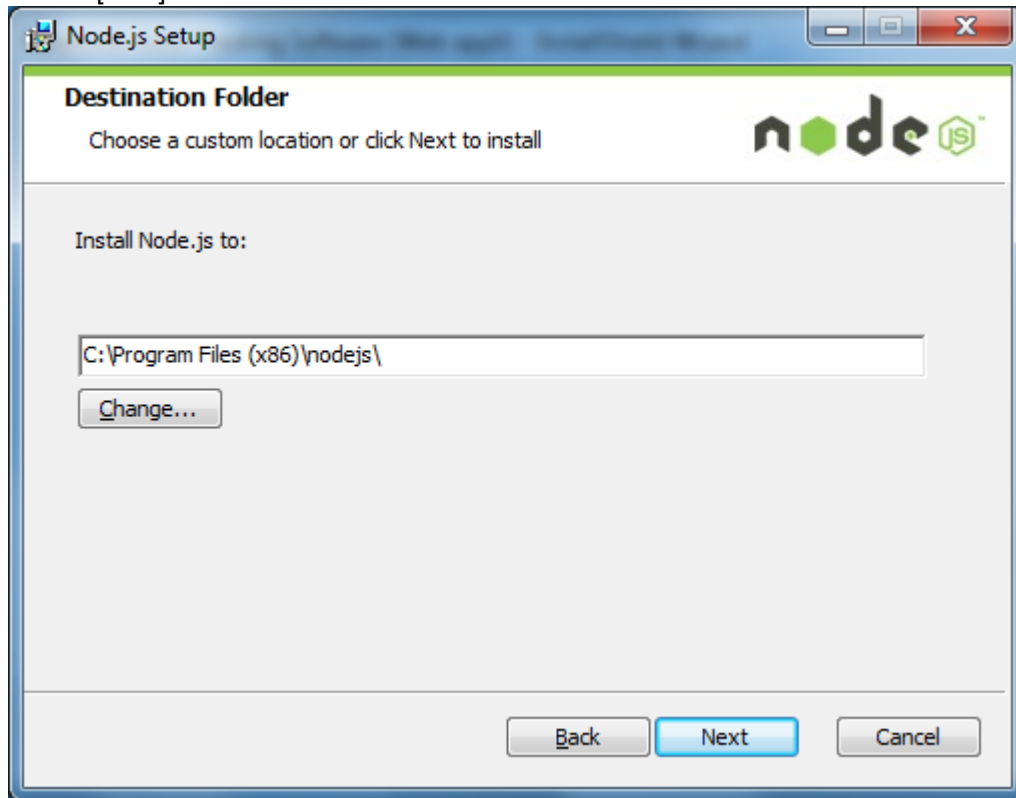


3-2. Select [ I accept the terms in the license agreement], and then click [Next].

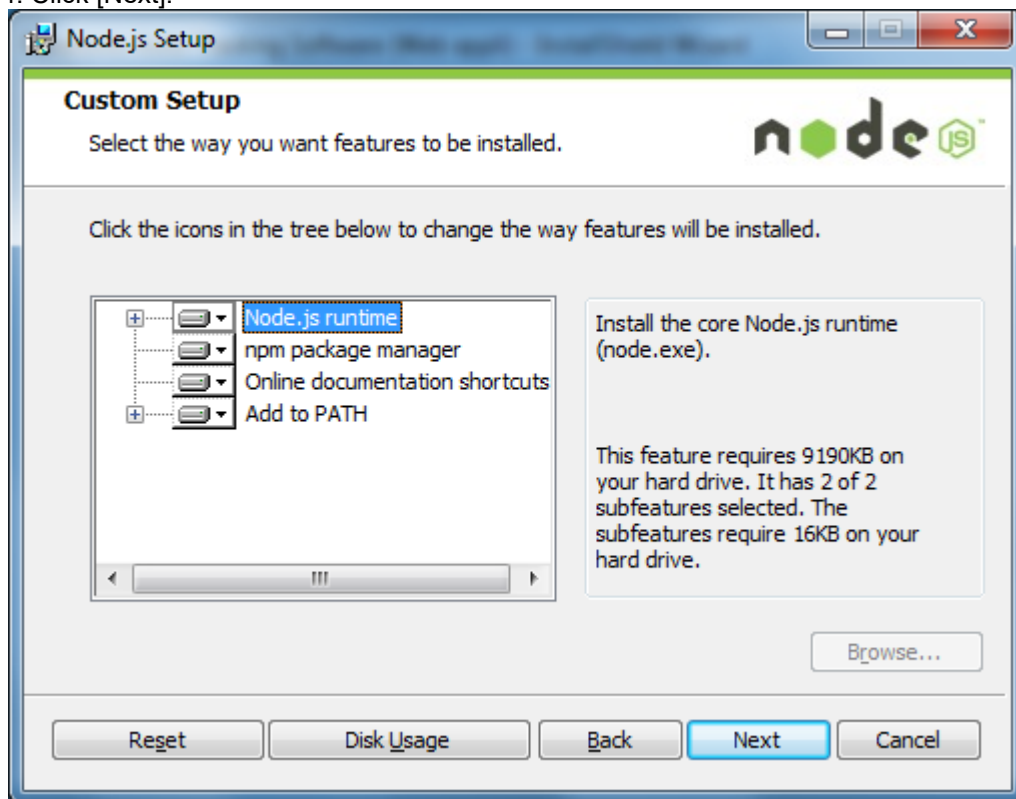




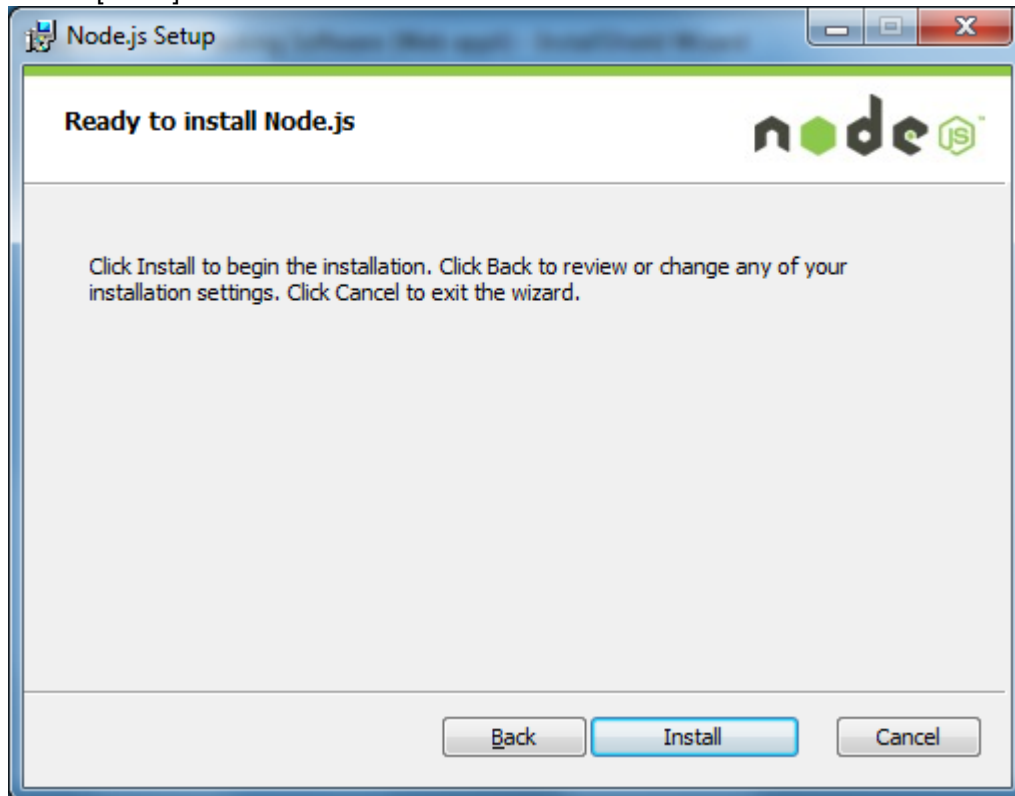
3-3. Click [Next].



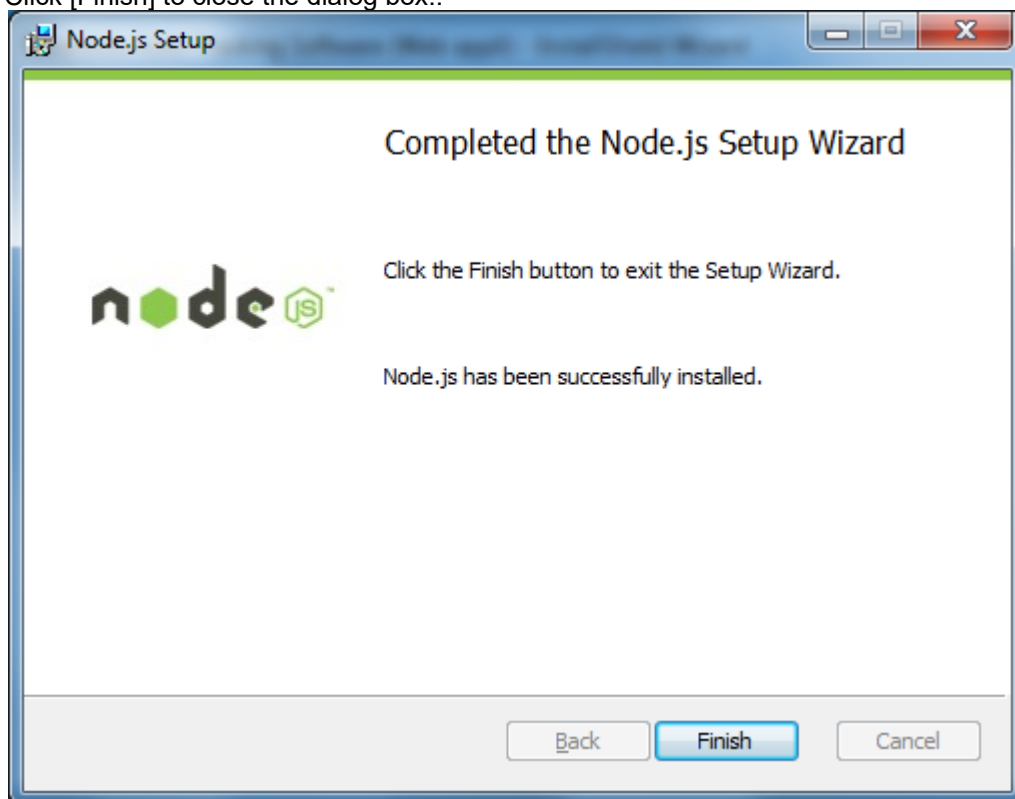
3-4. Click [Next].



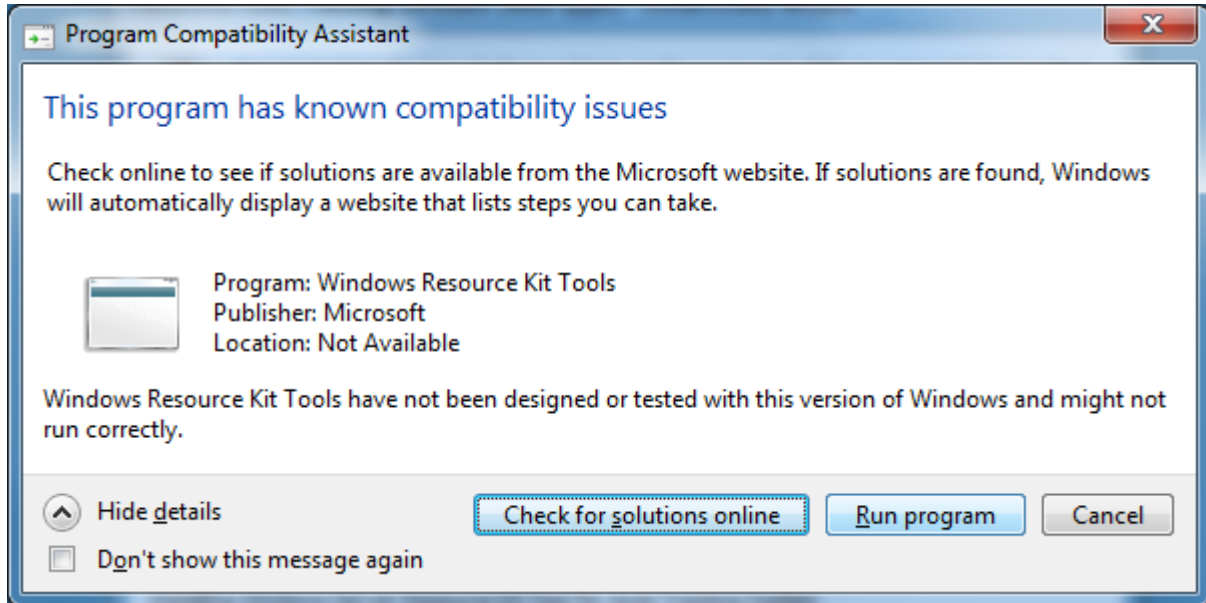
3-5. Click [Install].



3-6. Click [Finish] to close the dialog box..



4-1. If the installation of “Windows Server 2003 Resource Kit Tools” is required, the following screen will be displayed. Select [Run program].



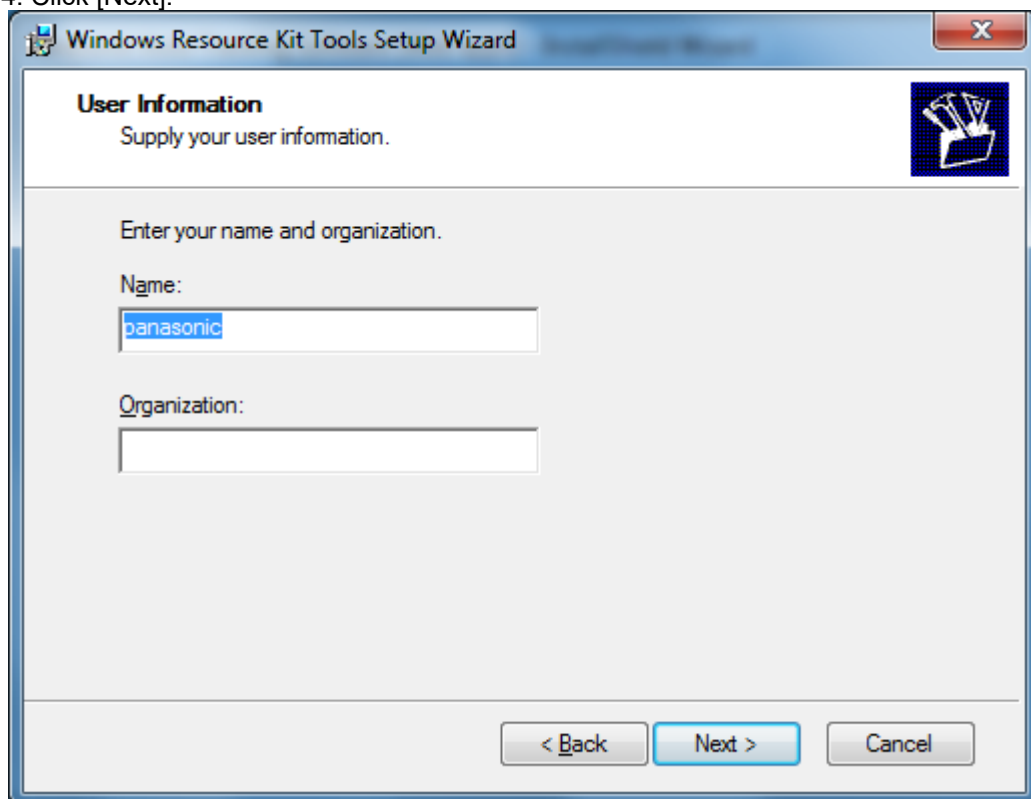
4-2. Click [Next].



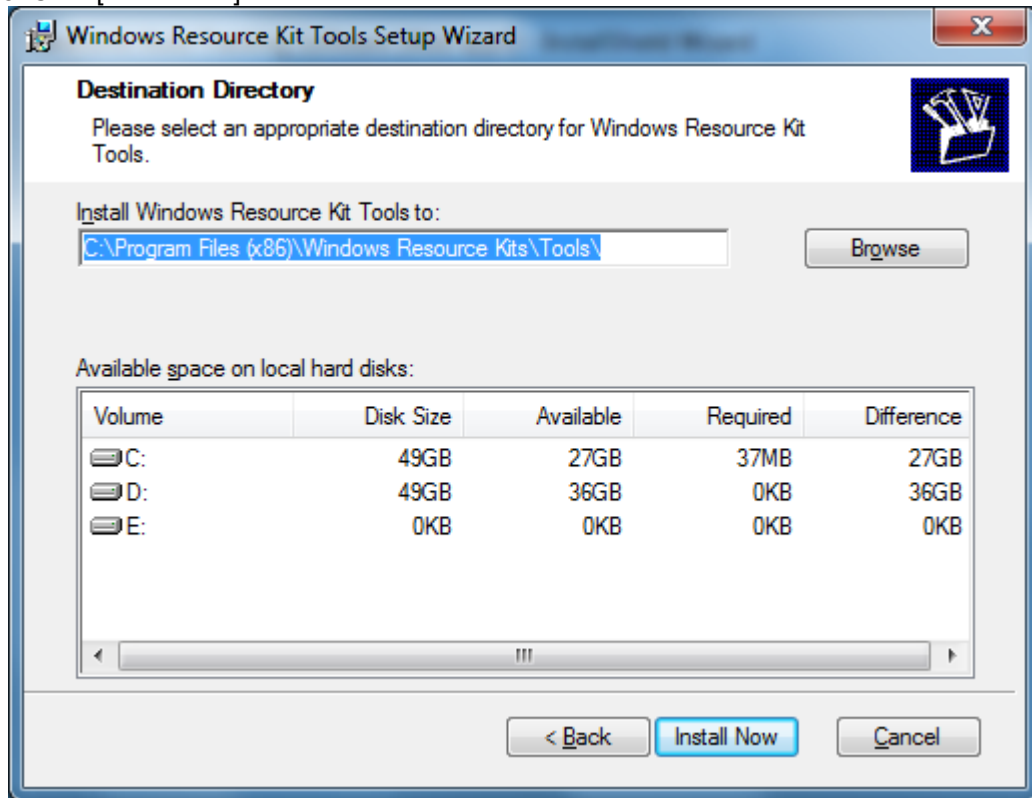
4-3. Select [I Agree] and click [Next].



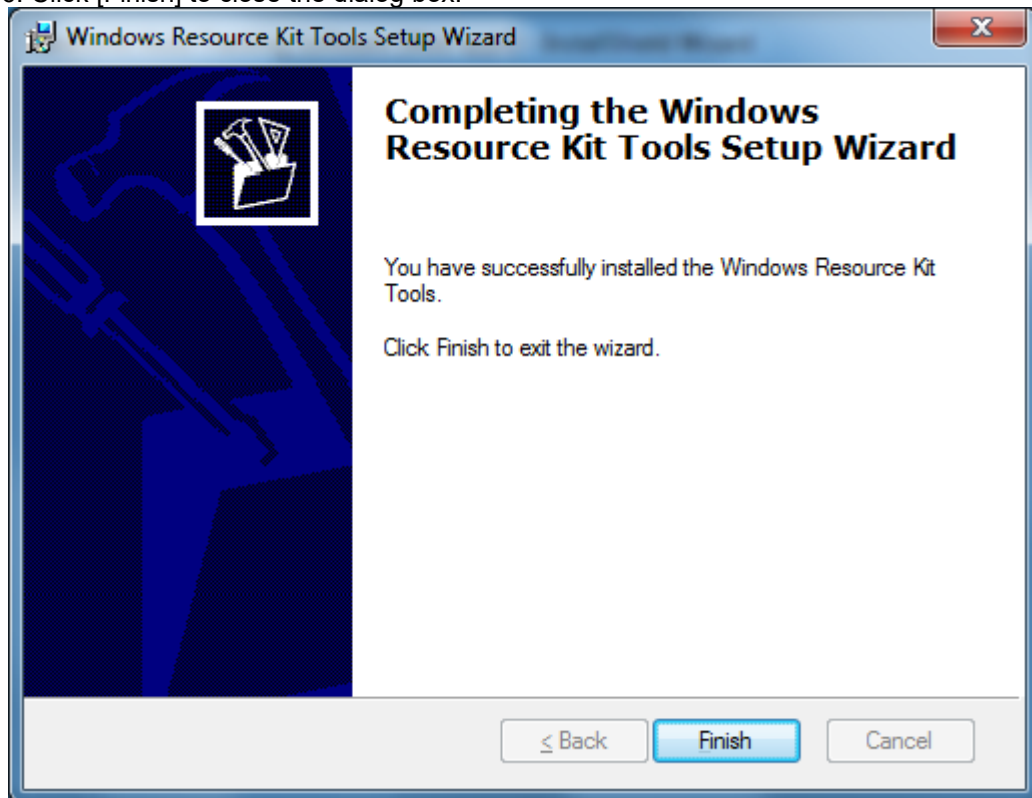
4-4. Click [Next].



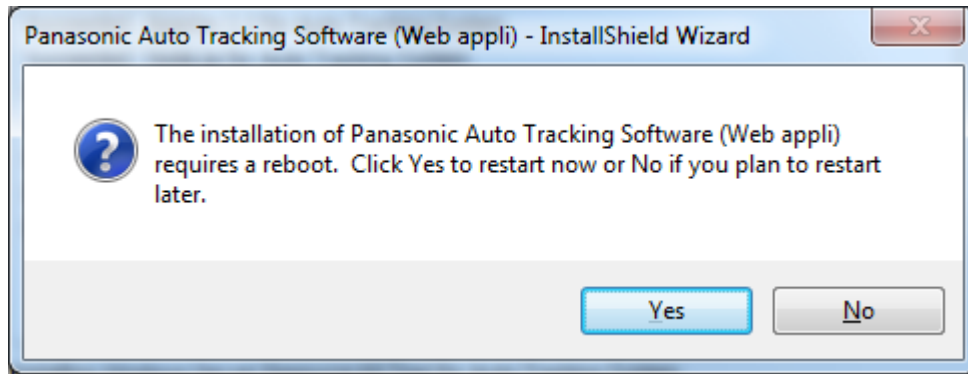
4-5. Click [Install Now].



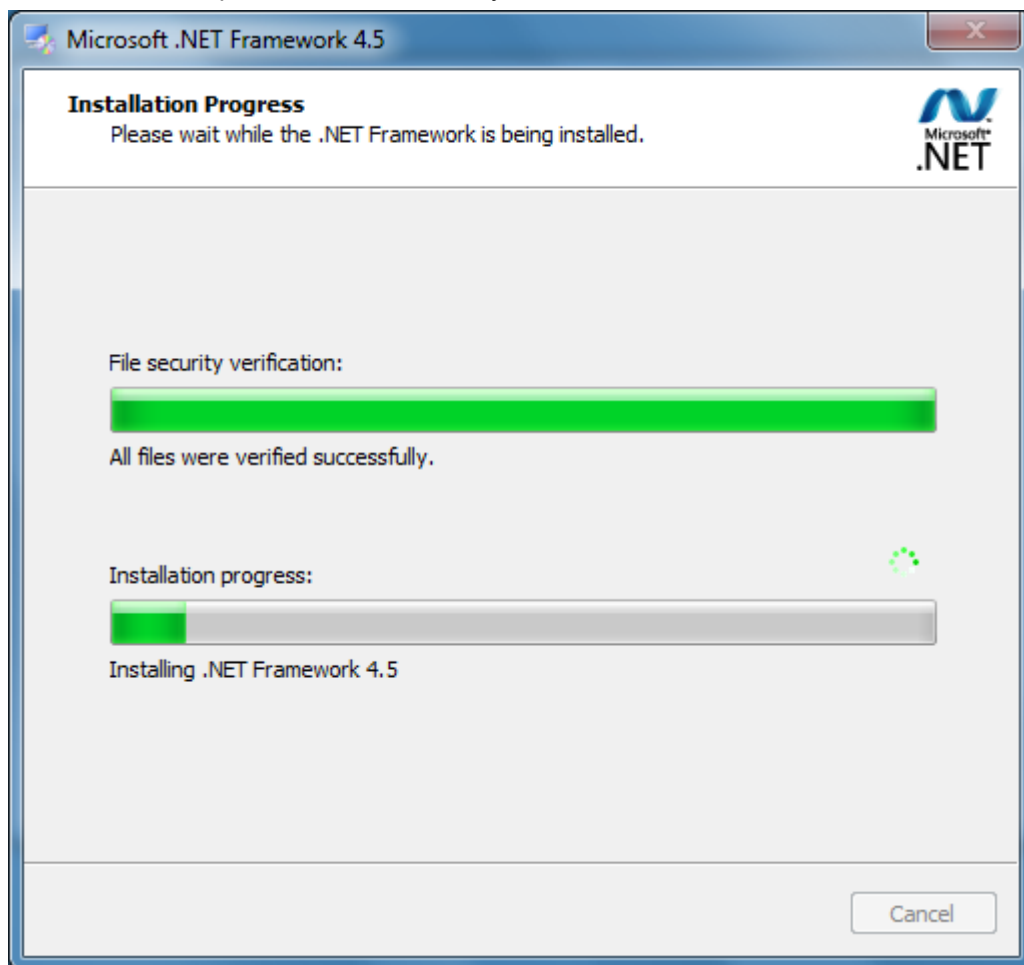
4-6. Click [Finish] to close the dialog box.



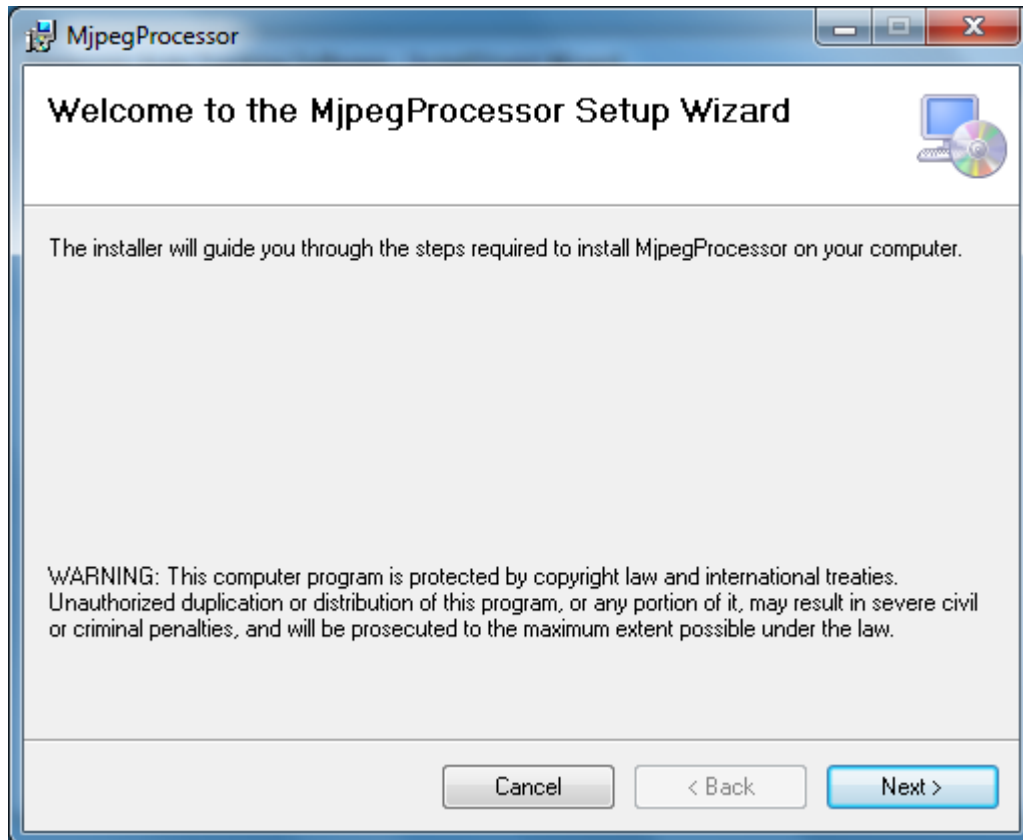
4-7. If the confirmation screen of the PC restart appears, click [Yes] to restart PC.



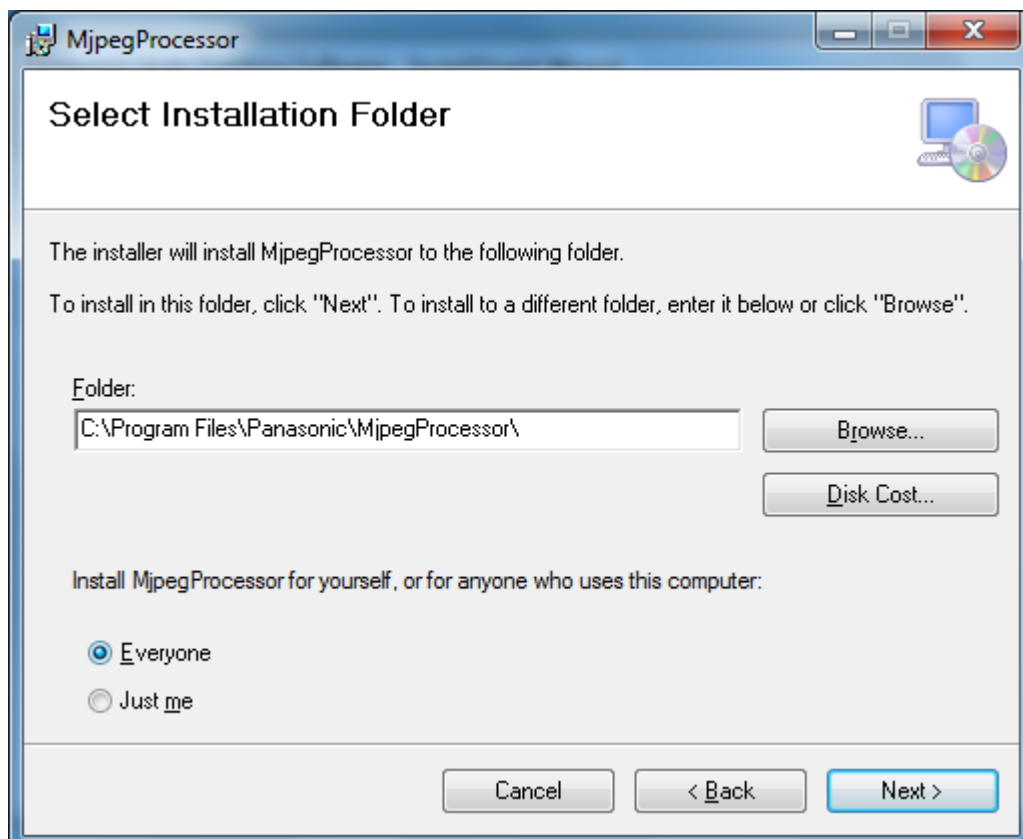
5. If the installation of .NetFramework4.5 is required, the following screen will be displayed, the installation will be performed automatically.



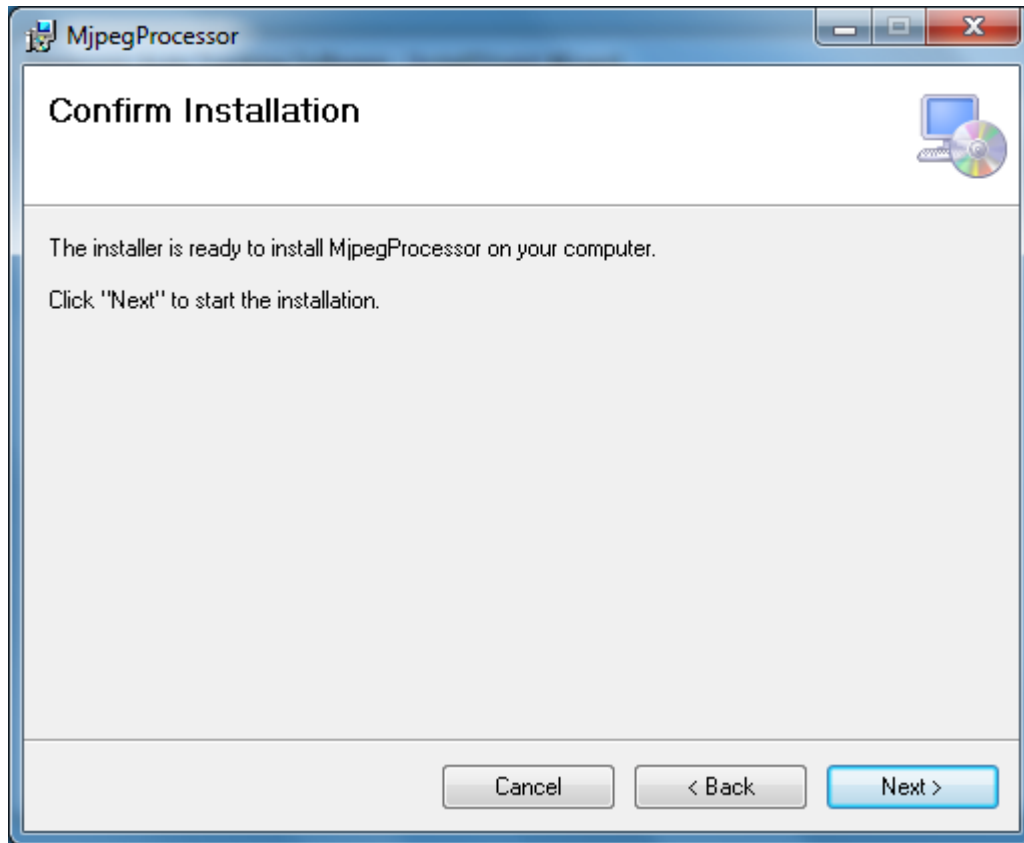
6-1. If the installation of MjpegProcessor is required, the following screen will be displayed, click [Next].



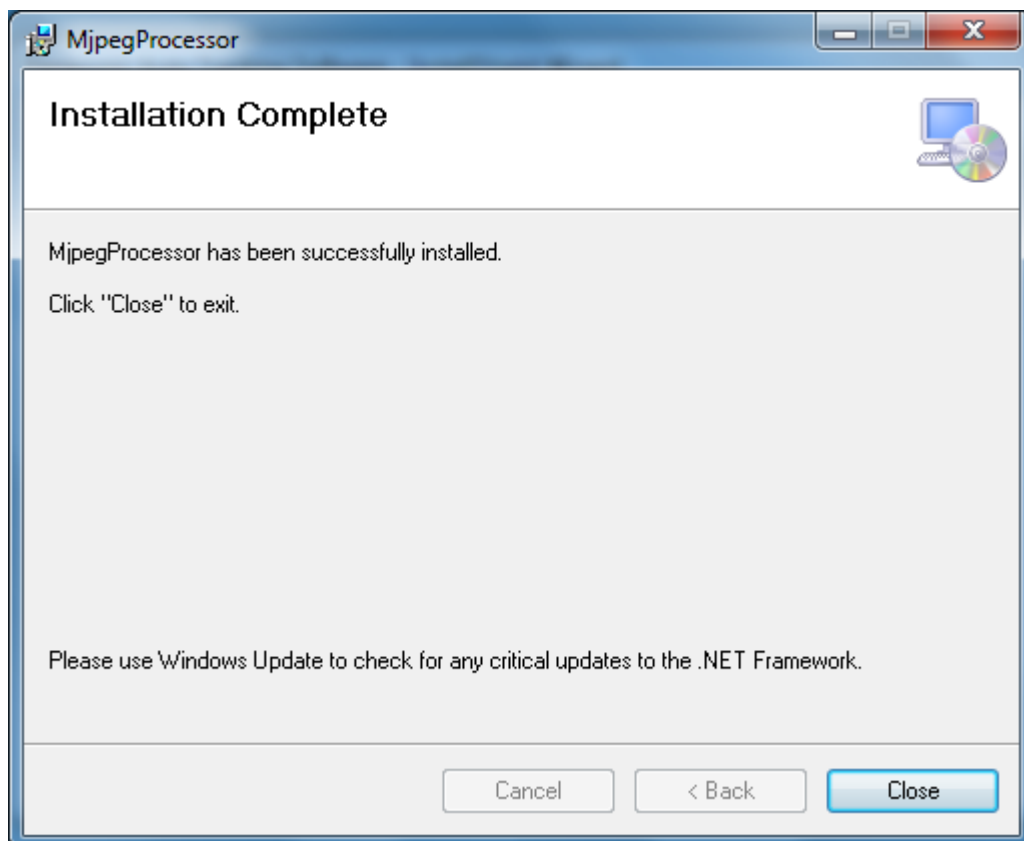
6-2. Since the confirmation screen of the installation location appears, click [Next].



6-3. The screen for starting installation appears. Click [Next].

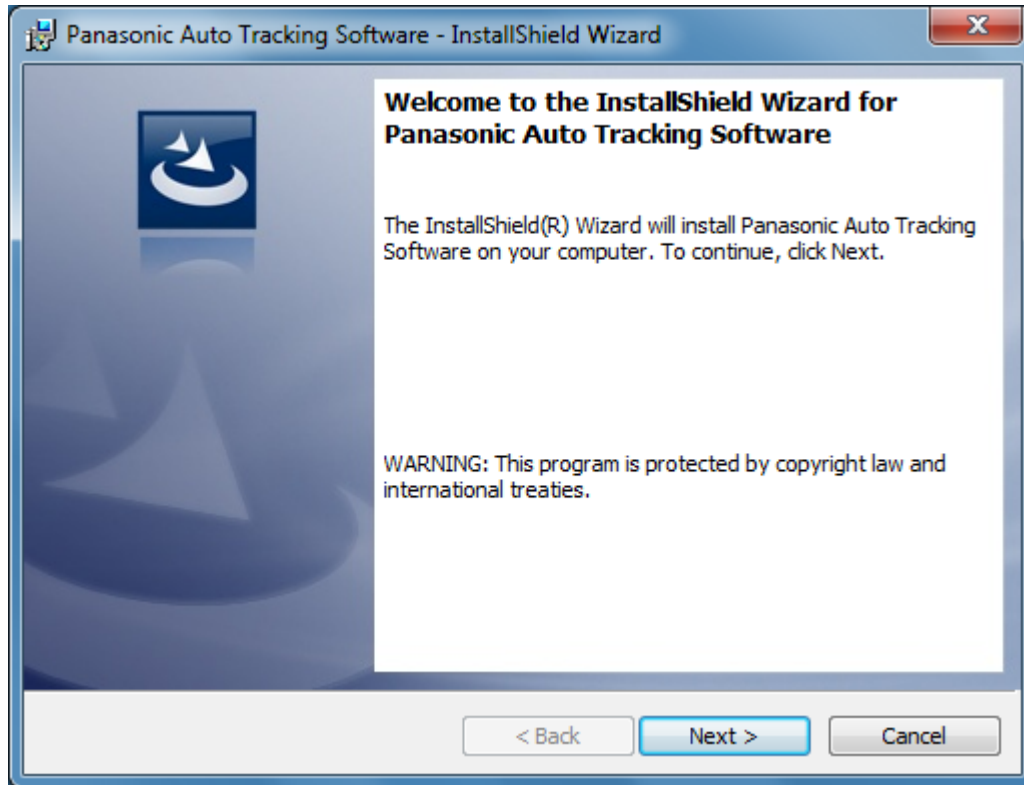


6-4. When installation is complete, click the [Close] button to close the dialog box.





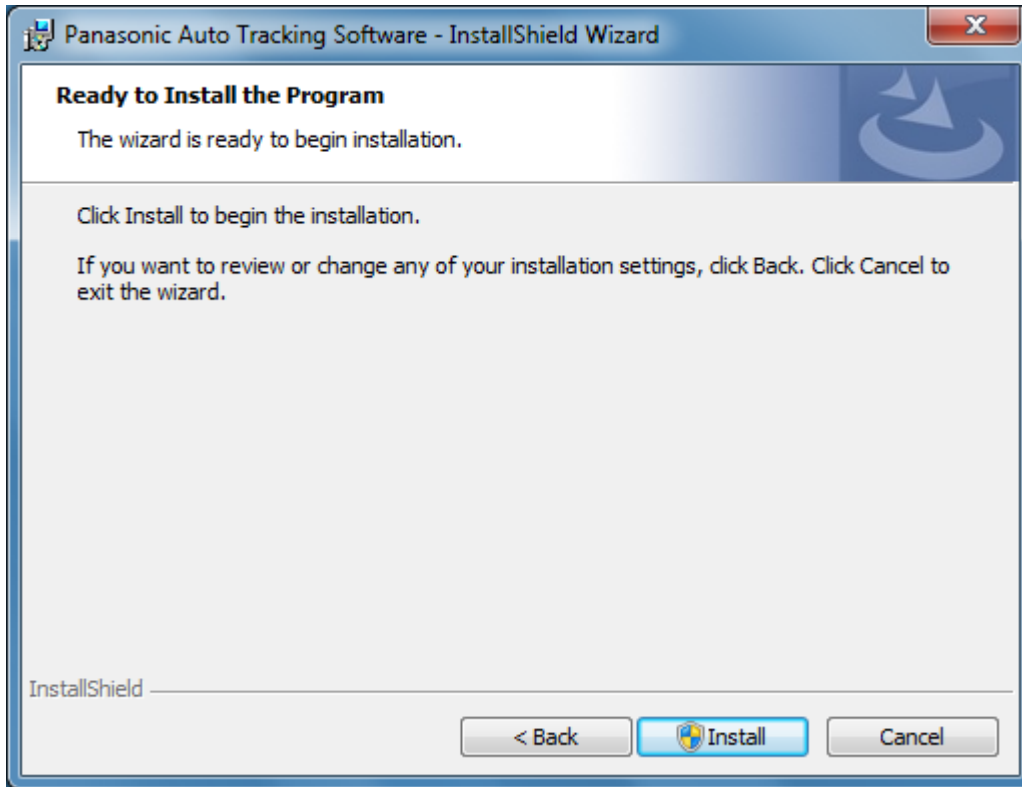
7. When the installation of the required components is completed, the installation screen appears. Click [Next].



8. The Software License Agreement appears. Check the content, and if there is no problem, select [I accept the terms in the license agreement], and then click [Next].



9. The screen for starting installation appears. Click [Install].



10. When the following screen appears, set each item and click [Setup].

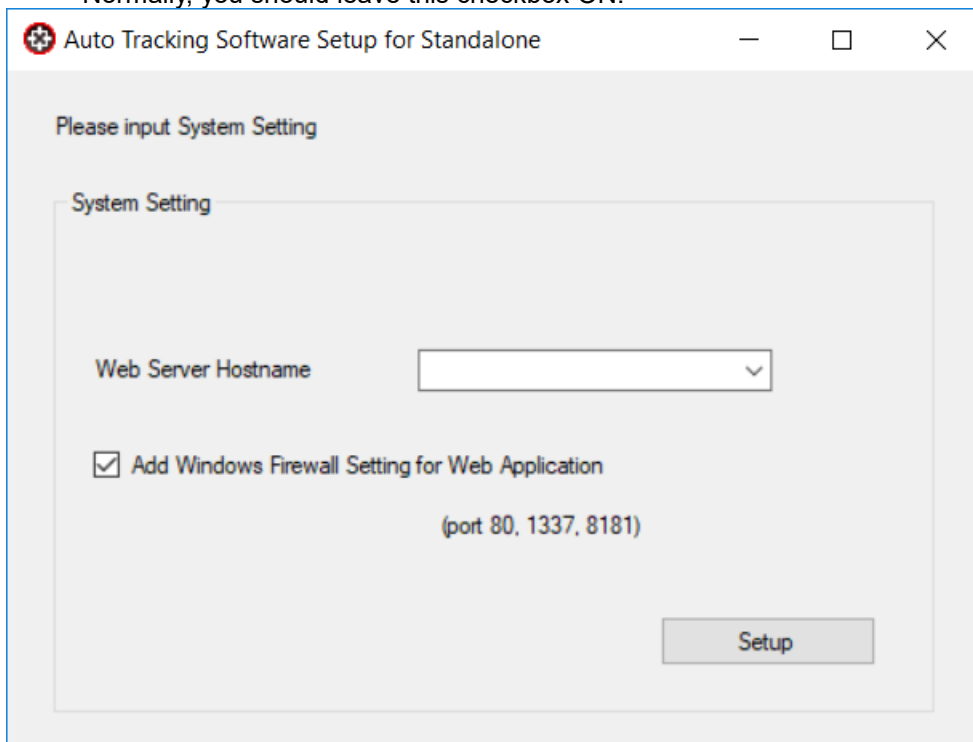
Web Server Hostname:

Set the IP address set for the PC's network adapter

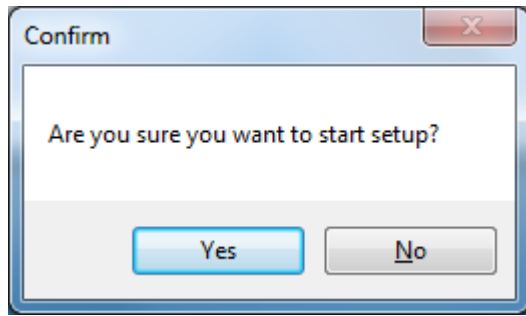
Add Windows Firewall Setting for Web Application:

Turn the checkbox ON to change the settings of Windows firewall.

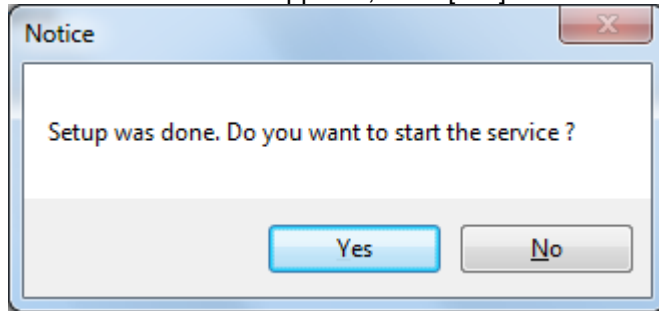
Normally, you should leave this checkbox ON.



11. A confirmation screen appears, Click [Yes].

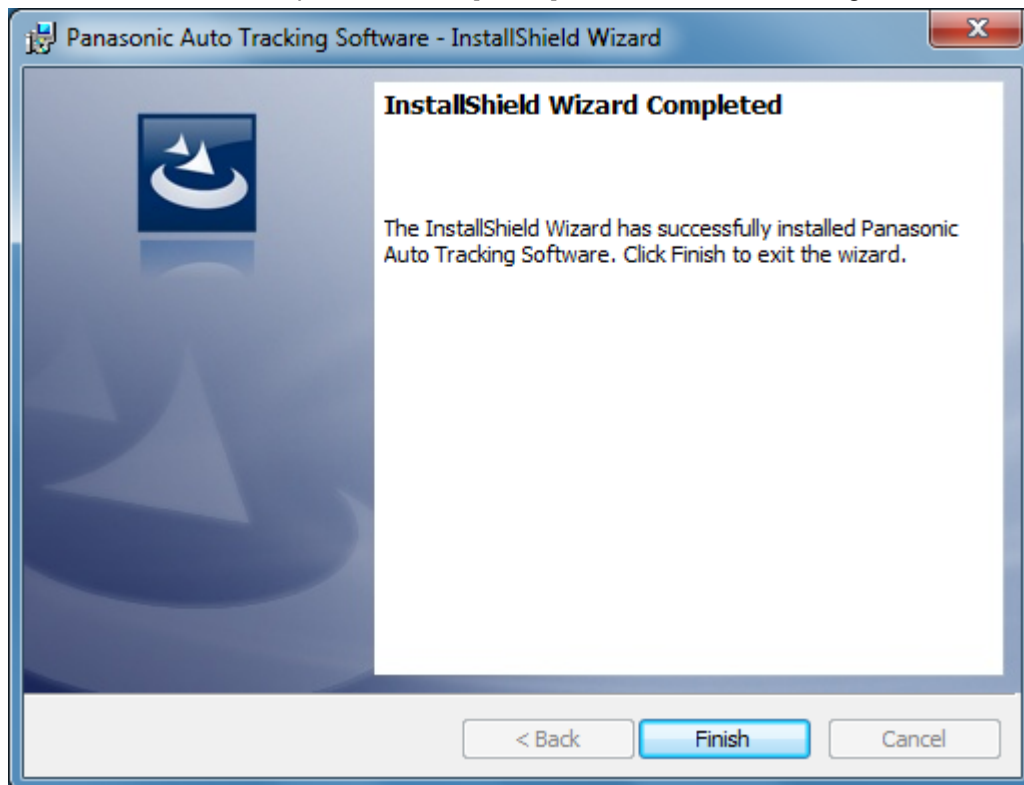


12. A confirmation screen appears, Click [Yes].



13. Close the screen that is displayed in step 10 by clicking the X button in the upper right corner of the screen.

14. When installation is complete, click the [Finish] button to close the dialog box.



## 4. Startup and Exit

---

### 4.1. Starting the Software

Click the shortcut [Auto Tracking Software] created on the desktop to start the software.

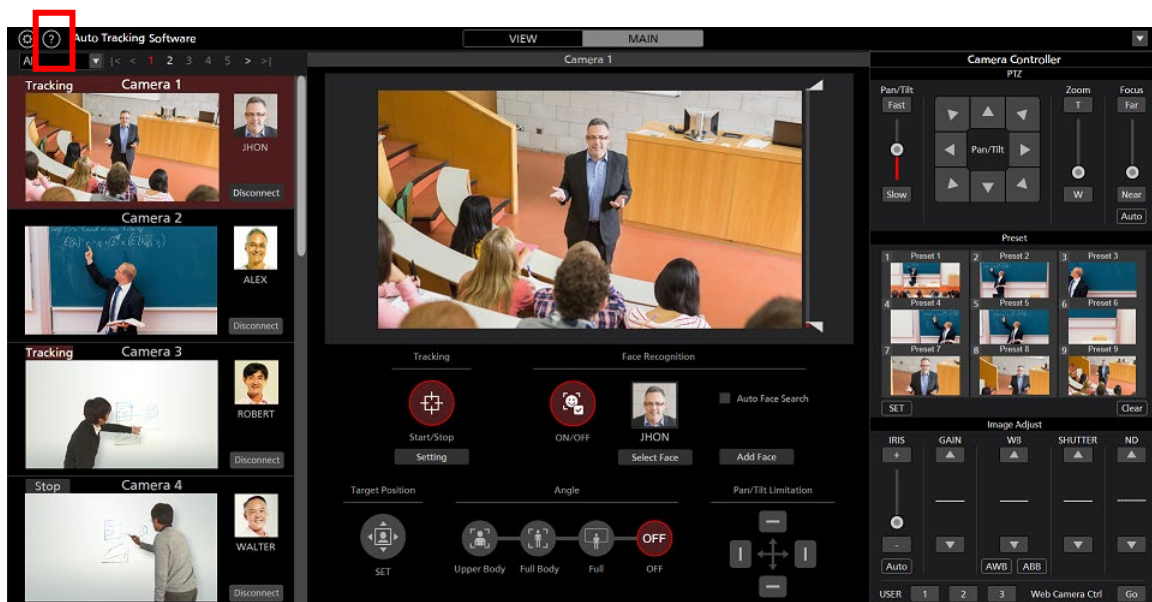
### 4.2. Exiting the Software

While the application is running, click the × button at the top right of the window to exit the software.

## 5. About the Operation Manual

---

The operation manual of this software is provided in the help file format displayed on the Web browser. Click ? button on the upper left of the screen to display the operation manual.



## 6. About Activation

---

This is paid software.

To enable you to test the functions of the software, we offer a trial period of 30 days from the day of installation of this software. Therefore, you can use it for free during this period, but you must purchase the key code (license) after the expiry of the trial period, and activate the software.

For the activation procedure, see the operation manual of this software.