



# Food & Beverage

XYLEM SOLUTIONS FOR ALL APPLICATIONS

**xylem**  
Let's Solve Water

# Your partner for the entire water cycle...

As a world leader in efficient and sustainable water technology, we offer a unique product portfolio of innovative solutions for the water cycle.

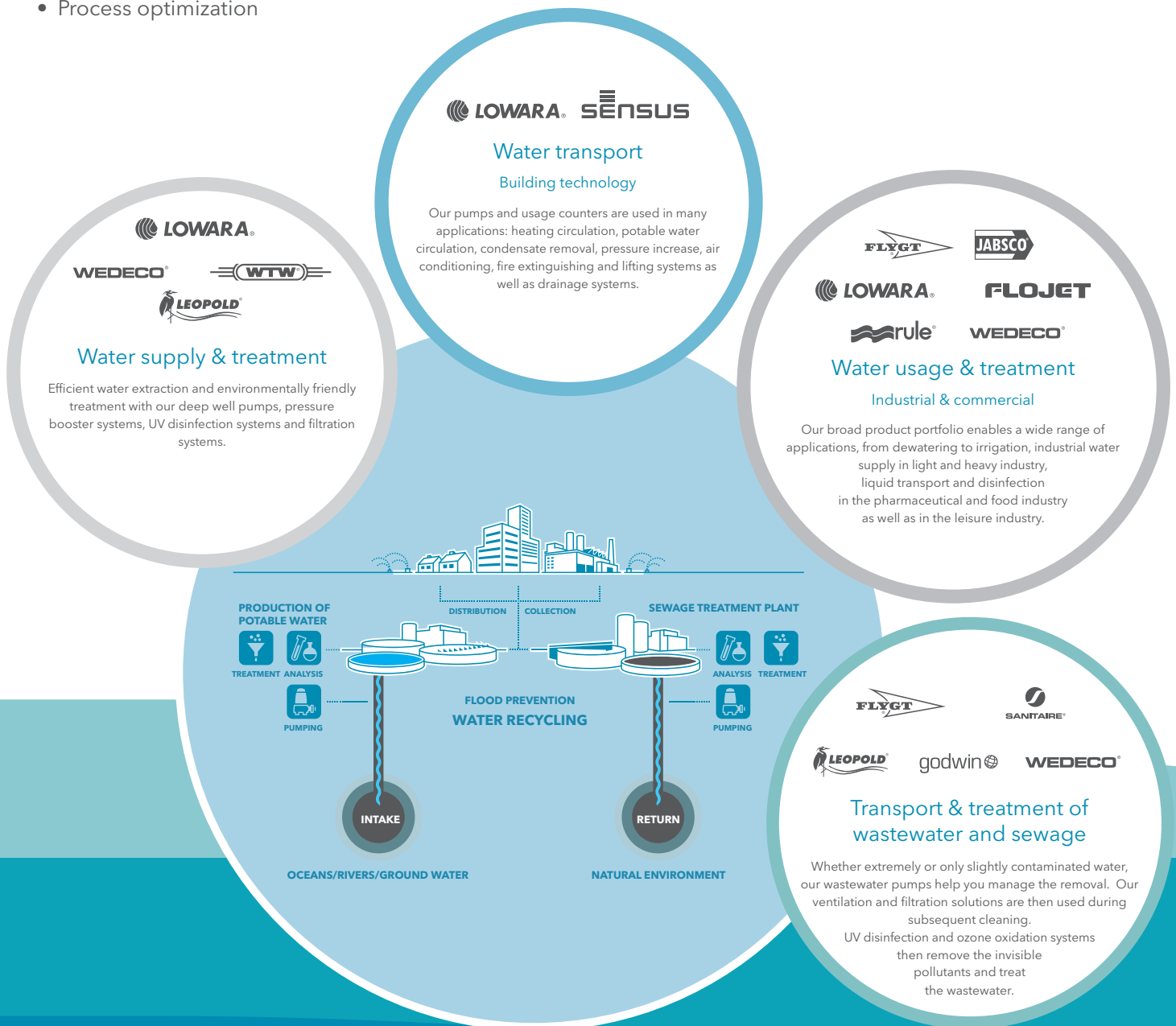
Xylem stands for intelligent system solutions to water issues.

Our strength is the variety of leading product brands and decades of application expertise in the following areas:

- Water transport
- Wastewater transport
- Transport and treatment of sewage
- Water quality analysis
- Process optimization

Xylem serves and provides:

- Municipal water management
- Industrial applications
- Residential and building technology
- Agriculture
- Construction and mining
- Shipping



... with the necessary experience for every sector of the food and beverage industry

## Soft Drinks, Juices and Bottled Water.

## Alcoholic Beverages.

Xylem has the clean water and hygienic pumps you need to optimize your operations and the wastewater pumps and aerobic biological treatment to handle and treat the high organic loads in your wastewater stream thus leading to COD/BOD reduction.

## Fruit and Vegetables.

Xylem's advanced oxidation processes (e.g. ozone combined with UV) are used to remove micro-pollutants like pesticides and herbicides and Xylem's pumps are used to handle water needed to wash and transport fruits & vegetables.

## Dairy.

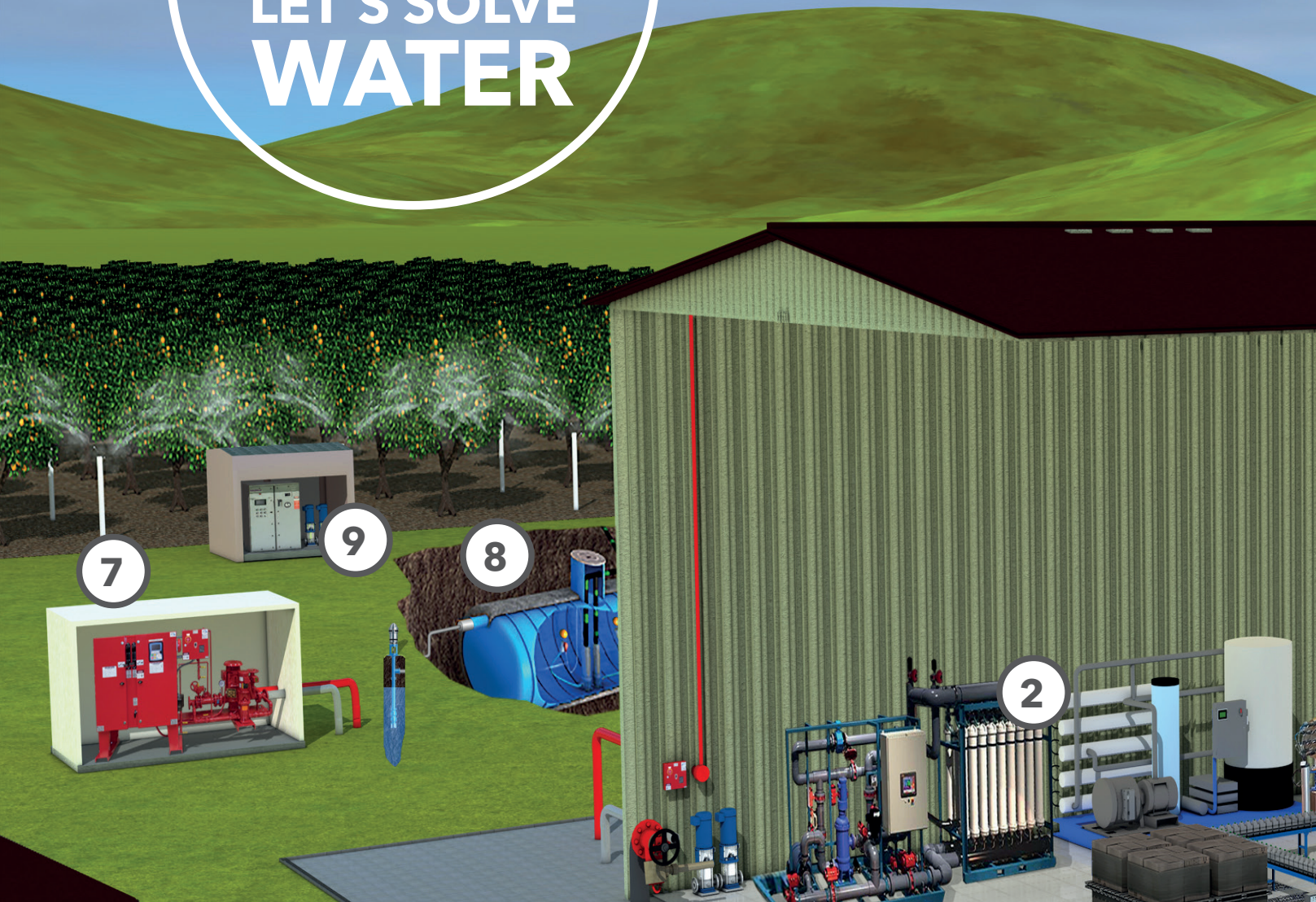
Whether milk, yoghurt, cheese or other dairy products are being produced, enormous amounts of energy is needed for cooling and Xylem's energy efficient clean water pumps optimize energy use in your plant thus reducing your operational costs.

## Meat, Poultry and Seafood.

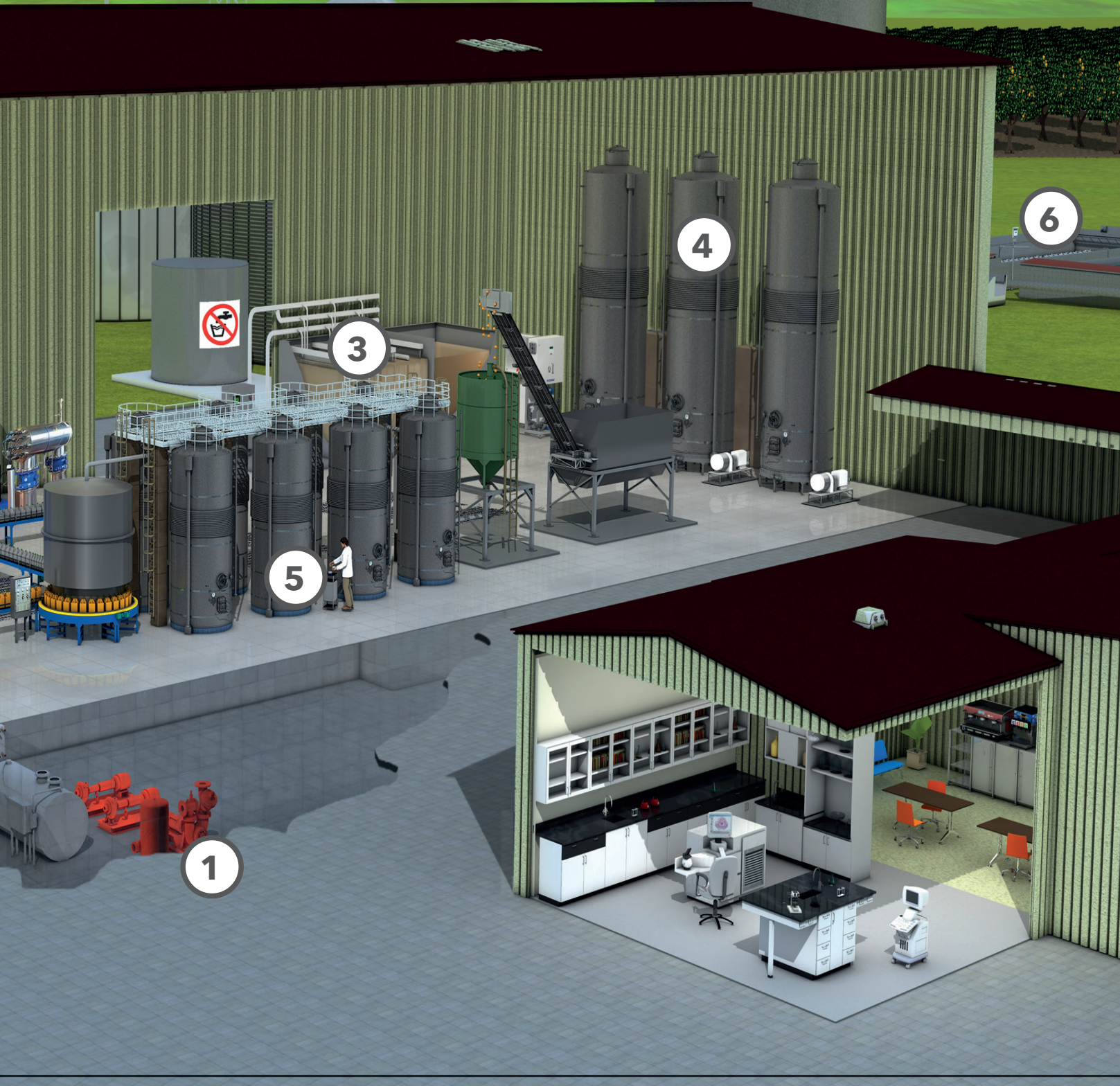
Xylem's booster sets for washing keep your facility clean and wastewater pumping, aeration and mixing solutions can handle the toughest wastewater from your facility.



# EVERYTHING FROM A SINGLE SOURCE LET'S SOLVE WATER



- 1 Water Intake - Lowara borehole pumps
- 2 Water supply - Lowara pumps & booster sets
- 3 Disinfection - Wedeco UV & Ozone Systems
- 4 Hygienic and Ultra processing - Jabsco & Flojet Ultra pumps
- 5 Bottling Process - Jabsco pumps
- 6 Water/wastewater transport & treatment - Flygt & Wedeco
- 7 Fire-fighting equipment - Lowara booster sets
- 8 Irrigation - Lowara borehole pumps
- 9 Irrigation - Lowara booster sets



# Lowara single stage centrifugal pumps.

## e-NSC

Block pumps  
According to EN 733

Flow rate up to  
Closed valve pressure up to  
Power up to  
Temperature  
Pressure

**50 Hz**  
1800 m<sup>3</sup>/h  
160 m

315 kW  
-25°C to +140°C  
16 bar

Various materials and mechanical seals available



## CA/CEA-CEAN

Centrifugal pumps  
made of stainless  
steel in block  
construction

Flow rate up to  
Closed valve pressure up to  
Power up to

**50 Hz**  
31 m<sup>3</sup>/h  
62 m  
3 kW

**60 Hz**  
32 m<sup>3</sup>/h  
64 m  
3 kW

Various mechanical seals available



## CO

Single-stage  
centrifugal pumps  
made of stainless  
steel 1.4404 in block  
construction

Flow rate up to  
Closed valve pressure up to  
Power up to

**50 Hz**  
54 m<sup>3</sup>/h  
24 m  
3 kW

**60 Hz**  
54 m<sup>3</sup>/h  
24 m  
3 kW



## SHO

Stainless steel pumps  
with open impeller

Flow rate up to  
Closed valve pressure up to  
Power up to  
Size  
Temperature  
Pressure

**50 Hz**  
56 m<sup>3</sup>/h  
50 m  
11 kW  
DN 25-50  
-10°C to +120°C  
12 bar



## e-SHE, e-SHS, e-SHF

Stainless steel  
centrifugal pumps  
with extended motor  
shaft, coupled motor  
or mounted on frame  
According to EN 733

Flow rate up to  
Closed valve pressure up to  
Power up to  
Size  
Temperature

**50 Hz**  
240 m<sup>3</sup>/h  
110 m  
37 kW (extended motor shaft up to 22 kW)  
DN 32-80  
-30°C to +120°C



# Submersible motor pumps.

## GS 4" submersible motor pumps

	50 Hz	60 Hz
Flow rate up to	21 m <sup>3</sup> /h	27 m <sup>3</sup> /h
Closed valve pressure up to	340 m	300 m
Power up to	0.34 kW - 7.5 kW	
Temperature	0°C to 35°C	
Submersion depth	100 m	



## SCUBA 5" submersible motor pumps with or without float switch

	50 Hz	60 Hz
Flow rate up to	7.5 m <sup>3</sup> /h	8 m <sup>3</sup> /h
Closed valve pressure up to	80 m	75 m
Power up to	0.55-1.1 kW	
Temperature	0°C to 40°C	
Submersion depth	20 m	



## Z8-12 8" to 12" submersible motor pumps

	50 Hz	60 Hz
Flow rate up to	520 m <sup>3</sup> /h	480 m <sup>3</sup> /h
Closed valve pressure up to	550 m	
Power up to	350 kW	
Temperature	0°C to 60°C	
Installation depth	350 m	



# Multistage pumps.

## e-SV Vertical multistage pumps

	50 Hz	60 Hz
Flow rate up to	160 m <sup>3</sup> /h	160 m <sup>3</sup> /h
Closed valve pressure up to	330 m	280 m
Power up to	55 kW	55 kW
Temperature	-30°C to +120°C (High temp. up to 180°C)	
Size	DN 25-125	
Pressure	40 bar	



The range has 11 designs which can be adapted to several special applications.

## SVI Vertical multistage submersible pumps

	50 Hz	60 Hz
Flow rate up to	120 m <sup>3</sup> /h	144 m <sup>3</sup> /h
Flows up to	240 m	248 m
Power up to	30 kW	30 kW
Temperature	-10°C to +90°C	
Size	R 3/4" - DN 80	
Pressure	25 bar	



## e-HM Horizontal multistage pumps

	50 Hz	60 Hz
Flow rate up to	29 m <sup>3</sup> /h	34 m <sup>3</sup> /h
Closed valve pressure up to	160 m	157 m
Power up to	5.5 kW	0.9 kW
Temperature	-30°C to 120°C	
Size	R 1" - R 6/4"	
Pressure	16 bar	



## e-MPA/e-MPR/e-MPD Horizontal multistage pumps

	50 Hz	60 Hz
Flow rate up to	850 m <sup>3</sup> /h	600 m <sup>3</sup> /h
Closed valve pressure up to	950 m	970 m
Power up to	1250 kW	1250 kW
Temperature	-25°C to +140°C (High temp. up to 180°C)	
Size	DN 50-150	
Pressure	100 bar	



## Pressure booster systems.

### SMB

Speed-controlled pressure increase system with e-HME, e-SVE or VME



Multi-pump operation  
Flow rate up to 51 m<sup>3</sup>/h  
Shut-off head up to 150 m  
Power up to 0.37-1.5 kW per pump/  
single-phase 208-240 VAC  
Temperature up to 80°C  
Size R 1" - R 3", DN 100-300  
Pressure 16 bar

### GHV

Complete pressure increase pump including HYDROVAR



Multi-pump operation  
Flow rate up to 640 m<sup>3</sup>/h  
Shut-off head up to 160 m  
Power up to 0.37-22 kW per pump  
Temperature up to 60°C (80°C)  
Size R 1" - R 3", DN 100-300  
Pressure 10 / 16 bar

## Variable speed pumps with permanent magnet motor.

### e-HME

Horizontal multistage pump



Flow rate up to 29 m<sup>3</sup>/h  
Shut-off head up to 155 m  
Power up to 0.37-1.5 kW /  
single-phase 208-240VAC  
Temperature up to 120°C  
Pressure PN16

## Variable speed pumps with HYDROVAR.

### e-SVH

Vertical multistage pumps incl. HYDROVAR



Flow rate up to	<b>50 Hz</b> 160 m <sup>3</sup> /h	<b>60 Hz</b> 160 m <sup>3</sup> /h
Flows up to	330 m	280 m
Power up to	55 kW	55 kW
Temperature	-30°C to +120°C (High temp. up to 180°C)	
Size	DN 25-125	
Pressure	40 bar	

The range has 11 designs which can be adapted to several special applications.

## Frequency converters.

HVL 2.015 - 2.022  
HYDROVAR for motor output from 1.5 - 2.2 kW



Motor output 1.5 - 2.2 kW  
Voltage input 1~230V AC  
Voltage output max. 3xVin

HVL 4.015 - 4.220  
HYDROVAR for motor output from 1.5 - 22 kW



Motor output 1.5 - 22 kW  
Voltage input 3~400V AC  
Voltage output max. 3xVin





## Rotary piston pumps.

Ultra~Line  
displacement  
pumps  
in ultra-hygienic  
version with 2-wing  
scimitar rotors



Flow rate up to 684 l/min  
Differential pressure up to 15 bar  
Viscosities up to 100,000 mPa s

Hy~Line+  
displacement  
pumps in ultra  
hygienic version  
with 3- and 2-wing  
scimitar rotors



Flow rate up to 2,200 l/min  
Differential pressure up to 15 bar  
Viscosities up to 100,000 mPa s

3A and EHEDG Approved

## Impeller pumps.

28-series  
Positive  
displacement  
pumps in hygienic  
and industrial  
design for the food  
industry



Flow rate up to 500 l/min  
Differential pressure up to 5 bar  
Viscosities up to 20,000 mPa s



## Pneumatic diaphragm pumps.

AP, JAP  
Pneumatic  
diaphragm  
pumps in industrial  
design



AP flow rate up to 30 l/min and 70 m  
JAP flow rate up to 800 l/min and 70 m



## Wastewater pumps.

### N 3000

Wastewater submersible motor pump in grey cast iron with open dual channel impeller



Flow rate up to 2120 m<sup>3</sup>/h  
Shut-off head up to 108 m  
Power up to 105 kW  
Temperature 40/70°C

### CONCERTOR N6020

Wastewater submersible motor pump in grey cast iron with open dual channel impeller



Flow rate up to 430 m<sup>3</sup>/h  
Shut-off head up to 50 m  
Power up to 7,3 kW  
Temperature 70°C

### C 3000

Wastewater submersible pump made of cast iron with closed multi-channel impeller



Flow rate up to 10800 m<sup>3</sup>/h  
Shut-off head up to 135 m  
Power up to 680 kW  
Temperature 40/70°C

### D 2000/3000

Submersible drain pump with free-flow impeller



Flow rate up to 180 m<sup>3</sup>/h  
Shut-off head up to 36 m  
Power up to 7,4 kW  
Temperature 40/70°C

### F 3000

Submersible pump with robust chopper-hydraulics for shredding fibers and solids



Flow rate up to 700 m<sup>3</sup>/h  
Shut-off head up to 97 m  
Power up to 47 kW  
Temperature 40/70°C

### D 8000

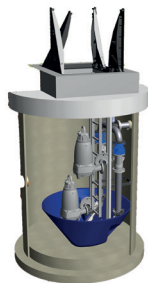
Submersible sewage pump for pumping corrosive wastewater which contains considerable solid and fibrous materials



Flow rate up to 250 m<sup>3</sup>/h  
Shut-off head up to 36 m  
Power up to 13 kW  
Temperature 40°C

### TOP 3D shaft

Turnkey compact pumping stations made of GRP. Resistant, deposit-free and self-cleaning



Diameter 1,0 - 2,8 m  
Height of unit 10 m  
Loading class A/D

# Mixers.

## SR 4220

Adaptive mixer with built-in frequency converter and increased system reliability with Dirigo™ drive unit



Thrust up to  
Power up to

870 N  
3,0 kW

---

## SR 4320

Highly efficient mixer with built-in frequency converter for infinite adjustment of the thrust.



Thrust up to  
Power up to

6,000 N  
8 kW

---

## SR 4400

Slow-moving "Banana" mixer with robust construction and long service life.



Thrust up to  
Power up to

4,500 N  
5.7 kW

---

## SR 4600

Robustly constructed compact mixers in many design options.



Thrust up to  
Power up to

2,000 N  
7 kW

---

## SY 4800

Vertical mixer for stirring in small and deep tanks.



Thrust up to  
Power up to

13,500 N  
15 kW

## UV disinfection systems.

### Spektron-i

For the disinfection of water in the food and beverage industry, for the disinfection of process water in pharmaceutical applications, electronic component manufacturing, and in industry in general for compliance with microbiological standards.



Flow rate up to  
Connections

152 m<sup>3</sup>/h  
NW 65-125

### Spektron e

Certified according to ÖNorm M5873-1 - Method B, for the disinfection of water to comply with microbiological standards. Cylindrical stainless steel reactor with concentrically arranged high-performance low-pressure lamps.

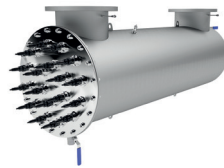


Flow rate up to  
Connections

800 m<sup>3</sup>/h  
NW 40-350

### BX

Cylindrical stainless steel reactor with concentrically arranged high-performance low-pressure lamps, for industrial applications.



Flow rate up to  
Connections

2,120 m<sup>3</sup>/h  
DN 80-500

### LBX

Cylindrical stainless steel reactor with concentrically arranged high-performance low-pressure lamps, for sewage and industrial applications.



Flow rate up to  
Connections

2,121 m<sup>3</sup>/h  
NW 40-500

## Ozone oxidation plants.

### Modular, GSO/GSA & OCS

For disinfection and oxidation in all process water in industrial applications as well as for laboratory and pilot scale tests.



Amount of ozone

0.2 - 400 g O<sup>3</sup>/h



**SANITAIRE®**

## Ventilation.

### Silver Series II

Disc diffusers

Size up to  
Air throughput up to

9"  
17 Nm<sup>3</sup>/h per ventilator

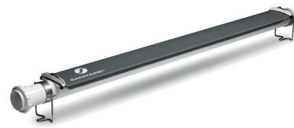


### Gold Series

Around 20% savings  
compared to conventional  
ventilation systems

Air throughput up to

37 Nm<sup>3</sup>/h per ventilator



### TurboMax

Direct-drive, air-bearing  
(oil-free) turbo blower

Motor

Power  
Air flow  
Noise level

Air flow measurement

Communication



Inverter-operated  
permanent magnet  
synchronous motor  
up to 600 kW  
up to 41,000 m<sup>3</sup>/h  
74-85 db per 1 m  
depending on the  
size (according to ISO  
3744:1944)  
installed in the device,  
accuracy +/- 3%  
ProfiNET (standard),  
MODBUS RTU and Profibus  
DP (optional)



## Monitoring & Control.

### SmartRun

Drive and frequency  
converter

Operation

Operating modes

Power supply

Power range

Display

Configuration

Pump protection

Unique functions

Communication

Alarm

Intelligent energy-saving  
level control

Manual / 0 / Automatic

3x380-480V, 500-600V, +/-10%, 56-60Hz

1 - 110 kW

OLED (monochrome)

Via keys, no special software and  
no PC required

Overtemperature, leakage

Pre-programmed energy minimization

Pump cleaning

Sump cleaning

Pipe cleaning

Modbus RTU (standard)

Potential-free contacts (standard)

SMS notification (optional)



### MagFlux

Flow meter

Accuracy

Power supply

Communication

Temperature range

Memory capacity

Connections

Analog output

Digital output

Protection class

Unique functions



+/- 0.1 % of the measured value

(System accuracy

better than +/-0.25)

24V AC, 50/60Hz +/- 10 %

230 (115)V AC, 50/60Hz

+/- 10 % 10-30V DC

Modbus RTU mode

-20°...60°

32 MB flash memory,

168,000 storage points

including data, time and value

1x RS-485 Modbus RTU mode,

1x USB, 1.1 type mini B, female

1x for communication module

1x active 4-20mA, galvanically

isolated, 12-bit resolution

1x potential-free

electromechanical relay

1x optically insulated

MOSFET relay

Terminal box IP68

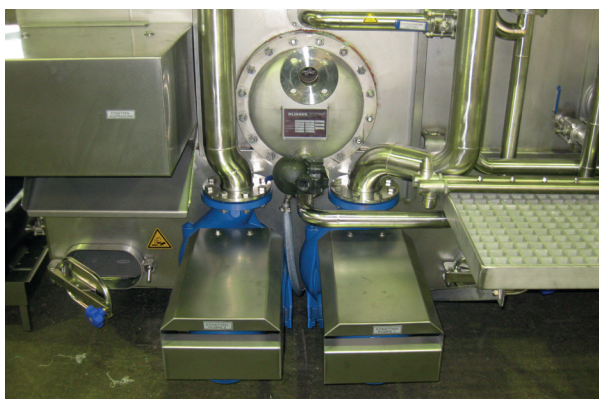
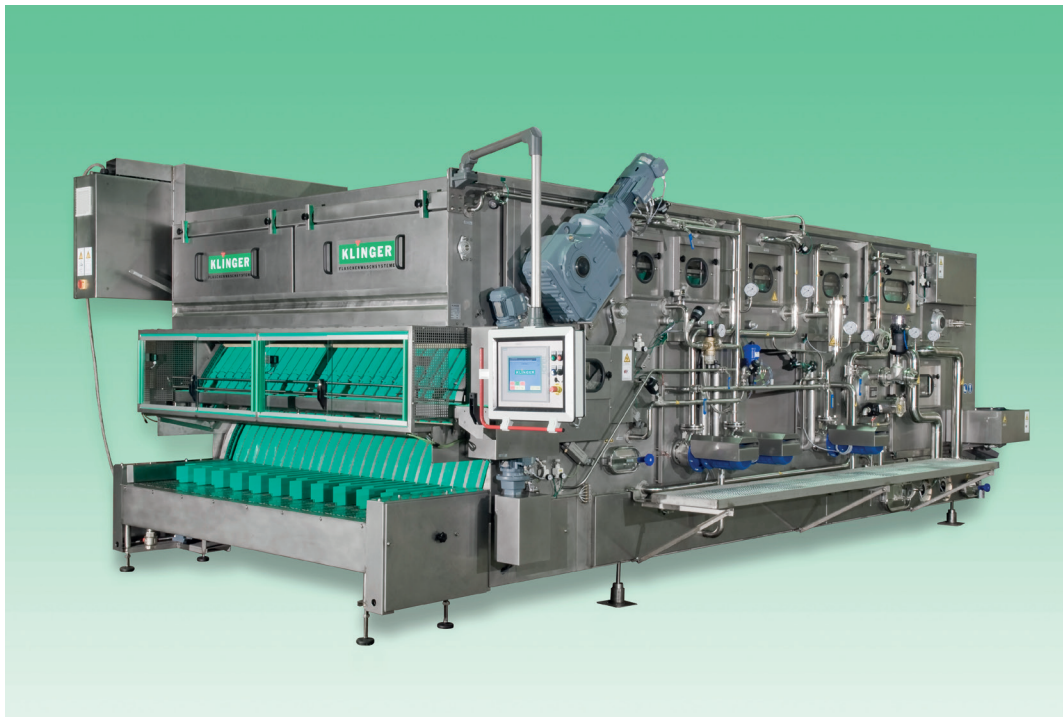
5-line display to output

graphics

integrated data logger

# References that impress.

Lowara pumps improve performance of bottle washing system.



Single-stage volute casing pumps: e-SHS, e-NSCS, LSB

Customer: Klinger Flaschenwaschsysteme GmbH in Langenlois, Austria,

# Xylem TotalCare services Designed around your needs

Xylem TotalCare offers a comprehensive service portfolio including traditional maintenance and predictive maintenance solutions to keep your equipment running reliably at all times. Our teams of knowledgeable and skilled technicians are capable of intervening quickly to address any performance or reliability issues that you face with your water and wastewater equipment and infrastructure operation.



## Genuine OEM Spare Parts.

- Genuine OEM spare parts tailored to fit your Xylem equipment and developed with performance and quality tests conducted right from the design phase
- Benefit from the latest innovation in the design of parts with all genuine Xylem parts to fit your water and wastewater equipment
- Guaranteed technical and engineering support with all genuine Xylem parts

## Emergency Response and On-Site repairs.

- Skilled technicians with the right tools to intervene
- Fast mobilization of the right technicians with the right skills thanks to our large, global service footprint
- Large fleet of rental equipment to ensure minimal downtime and secure the continuity of your operation.



# Xylem |'zīl m|

- 1) The tissue in plants that brings water upward from the roots;
- 2) A leading global water technology company.

We're a global team unified in a common purpose: creating advanced technology solutions to the world's water challenges. Developing new technologies that will improve the way water is used, conserved, and re-used in the future is central to our work. Our products and services move, treat, analyze, monitor and return water to the environment, in public utility, industrial, residential and commercial building services settings. Xylem also provides a leading portfolio of smart metering, network technologies and advanced analytics solutions for water, electric and gas utilities. In more than 150 countries, we have strong, long-standing relationships with customers who know us for our powerful combination of leading product brands and applications expertise with a strong focus on developing comprehensive, sustainable solutions.

**For more information on how Xylem can help you, go to [www.xylem.com](http://www.xylem.com)**



#### **Xylem Water Solutions UK Ltd.**

##### **Main Office**

Private Road No.1  
Colwick, Nottingham NG4 2AN  
Tel 0115 940 0111  
Email [fgbsales@xylem.com](mailto:fgbsales@xylem.com)  
[www.xylem.com/uk](http://www.xylem.com/uk)

##### **Axminster Office**

Millwey Rise Industrial Estate  
Axminster, Devon EX13 5HU  
Tel 01297 630 230  
Email [lowaraukenquiries@xylem.com](mailto:lowaraukenquiries@xylem.com)  
[www.xylem.com/uk](http://www.xylem.com/uk)

#### **Xylem Water Solutions Ireland Ltd.**

50 Broomhill Close  
Airton Road, Tallaght, Dublin 24  
Tel (+353) 01 4524 444  
Email [flygtIRL@xylem.com](mailto:flygtIRL@xylem.com)  
[www.xylem.com/ie](http://www.xylem.com/ie)

#### **Xylem Maintenance Agreements UK**

Tel 0800 009 3611

#### **Xylem Service & Rental UK**

24/7 Rental & Service Call Centre  
Tel 0845 707 8012

Xylem Water Solutions UK Limited reserves the right to make modification without prior notice.

© 2021 Xylem, Inc.