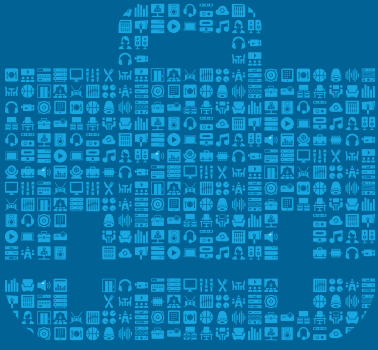


APPLICATION BRIEF



CORPORATE



Conference Room with Networked AV and Conferencing Processor with DSP and Microphone Mixing



OPPORTUNITY

Networked AV is gaining popularity as the distribution method of choice in meeting spaces. It allows for any source or destination to be connected to the standard network with just an encoder or decoder. Thus, meeting participants are not restricted to just content being delivered from in-room sources. They can pull content from any source being streamed to the network. Conversely, they can send to any destination connected to the network. This is ideal for overflow conference rooms and cross-campus meetings, extending the reach of the meeting beyond the walls of the room.

Adding web conferencing means local and remote attendees also need to be able to hear audio from a variety of source devices. In order to provide optimum audio to the speakers and participants in the room, local audio will require digital signal processing to control volume and optimize EQ for the attributes of the given space. Once optimized, the audio is routed through an amplifier to the room speakers. To be sure remote attendees can hear everyone, the system typically requires four or more microphones to evenly cover anyone in the room that's speaking. The solution should provide suitable connectivity and automixing for that requirement as well as acoustic echo cancellation (AEC) to ensure remote callers don't experience the "echo" often encountered when a microphone in the conference room picks up far-end audio coming through the signal. Optimized audio being sent to remote participants is output over USB for use in web conferencing.



SOLUTION

A Networked AV conference room with AMX N2300 encoders and decoders, BSS-DCP-555 audio digital processing, JBL speakers, AKG microphones, AMX Acendo collaboration system, and simple to use AMX control with touch panel user interface and HydraPort in-table architectural connectivity sets any meeting up for success - inside the walls of the conference room and beyond.



AKG

AMX

BSS

CROWN

dbx

JBL
PROFESSIONAL

lexicon

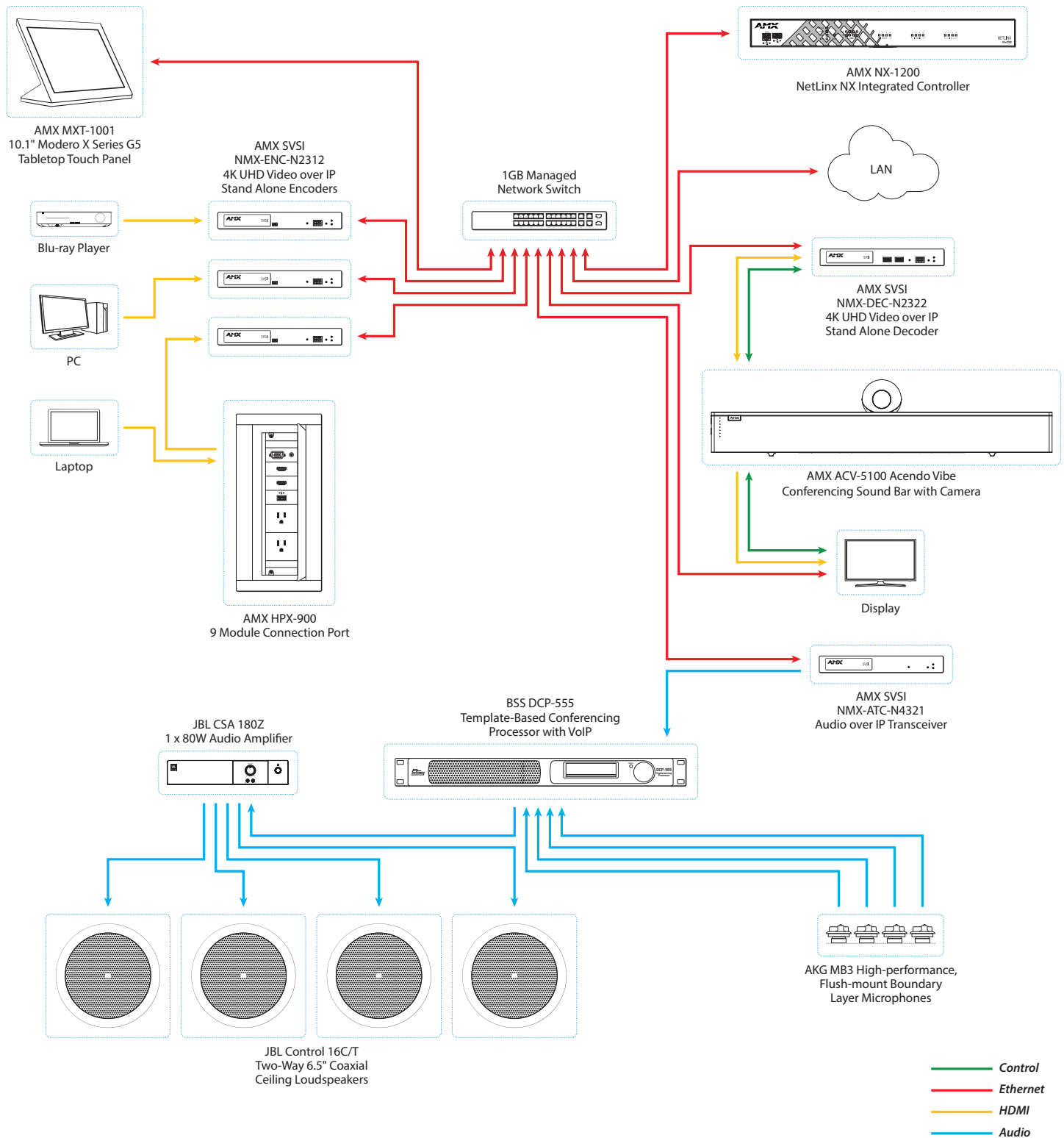
Martin

Soundcraft

STUDER

Content from in-room sources, visiting devices or anywhere on the network can be shared utilizing the N2300 encoders and decoders. The N2300 supports 4K over standard Gigabit networks with latency so low it can be used in extremely sensitive applications like interactive presentations with keyboard and mouse. The AMX Acendo Core and Vibe combine for easy collaboration including one touch meeting start, web browsing and file sharing along with a wide angle camera and premium soundbar. The BSS DCP-555 provides optimum audio for both in-room and remote users connected into web conferencing with digital signal processing and automatic microphone mixing.

NETWORKED AV CONFERENCE ROOM SYSTEM DIAGRAM





AMX N2300 Series 4K 4K30 4:2:0

Don't miss a single moment watching the big game or reviewing video at the big meeting with the 4K over IP solution that is fast enough for live action even price sensitive markets will appreciate. The new AMX SVSI N2300 Series Encoders and Decoders are designed to distribute beautiful 4K video with less latency, and consuming less power - all at an extremely competitive price.



BSS DCP-555 Digital Conferencing Processor

This audio processor designed specifically for conferencing applications provides multiple connectivity options, acoustic echo cancellation, and more. The DCP-555 provides microphone connectivity and optimization, automixing of microphones and room audio, acoustic echo cancellation, USB connectivity for web conferencing, and line output for in-room speakers.



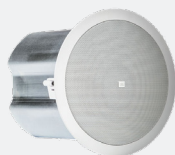
AMX Acendo Core & Vibe

AMX Acendo Core & Vibe work together for an optimal meeting place collaboration system with conferencing soundbar and camera. The AMX Acendo Core provides web conferencing, document viewing, and wireless screen sharing in an easy-to-use platform. With sound by JBL, the AMX Acendo Vibe is precision tuned for voice clarity, provides echo cancellation, far field microphones, ambient noise reduction, and duplex communication, is Bluetooth-enabled, and has a wide angle camera.



AMX Modero S Touch Panels

Bring smooth user control and sleek styling to any conference room with Modero S Touch Panels. The Modero S panels include advanced features that let users operate AV equipment simply and effectively. The Modero S provides an intuitive, gesture-based interface perfect for conference rooms, classrooms, or small huddle spaces.



JBL Professional Control 10 Series

Control 10 Series in-ceiling loudspeakers meet the increased market demand for superior sound quality, installation-friendly features and value, delivering a level of sonic performance unmatched by comparably priced products. The Control 12C/T, Control 14C/T, Control 16C/T and Control 18C/T are ideal for applications where excellent sound quality is needed. Control 10 Series models feature wide bandwidth, wide coverage, and combined 70V/100V and 8-ohm operation in each speaker. Available in either white or black.



AMX HydraPort Architectural Connectivity

HydraPort is the perfect solution for attractive, effective cable management. Accessible from all sides of the table, it has a very low-profile, flush-mounted design, and a much slimmer under-table depth than its competitors. Choose from three chassis sizes and an integrated touch panel model. You can customize your HydraPort with your choice of over 50 AV, power and control modules; most available in a retractable version, to create a connectivity solution perfect for any space.