

TECHNICAL MANUAL

BLUE PAPER ORCA OMX 2020



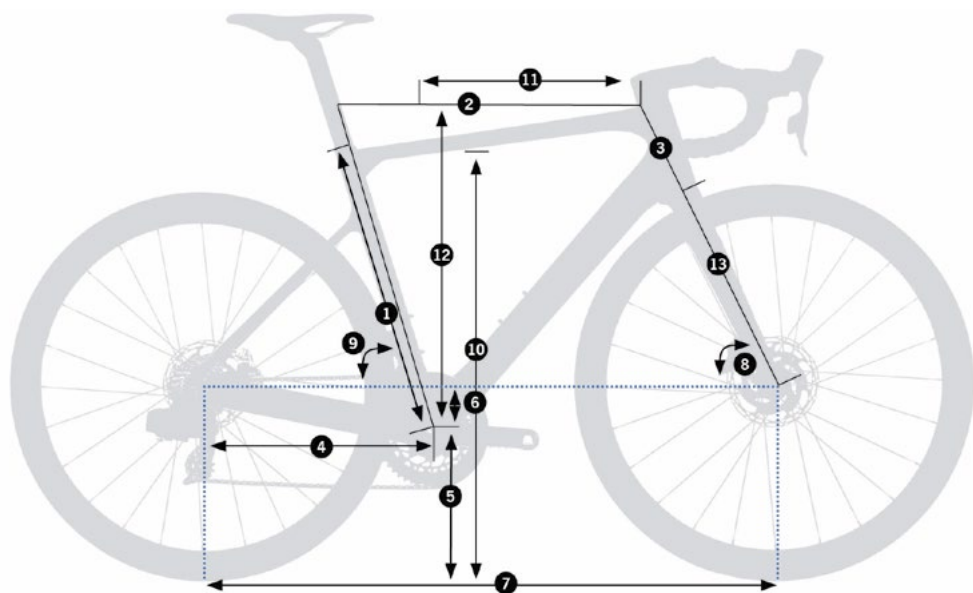
ORBEA



INDEX

GEOMETRY & SIZING	4
TECHNICAL SPECIFICATIONS	6
HEADSET	8
AXLES AND DERAILLEUR HANGER	10
FRAME HARDWARE	14
SEATPOST	16
ICR01 STEM	21
CABLING	25
HEADSET SPACERS/CUTTING THE STEERER TUBE	29
MAINTENANCE	30
WARRANTY	32

GEOMETRY & SIZING



SIZE	47	49	51	53	55	57	60
1 - Seat tube (c-t)	440	460	480	500	520	540	570
2 - Top tube (eff)	510,45	523,24	535,84	548,51	560,43	576,13	589,97
3 - Head tube	105,6	113,2	129,6	147,9	168	186,2	213,3
4 - Chainstay	408	408	408	408	408	408	408
5 - Bb height	264	264	264	266	266	266	266
6 - Bb drop	72	72	72	70	70	70	70
7 - Wheelbase	971,9	976	980	981,17	991,39	1001,86	1015,7
8 - Head angle	71°	71,5°	72,20°	72,80°	73,00°	73,20°	73,20°
9 - Seat angle	74,5°	74°	73,7°	73,5°	73,5°	73,2°	73,2°
10 - Standover height	726,48	739,84	758,48	778,84	799,12	817,55	845,06
11 - Reach	370,08	375,56	380	385	391,02	398	404
12 - Stack	506,06	515	533	552	571,92	590	616
13 - Fork length	370	370	370	370	370	370	370

HEIGHT (CM)	HEIGHT (IN)	SIZE
155-160	61.1"-63.0"	47
160-166	63.0"-65.4"	49
167-172	65.7"-67.7"	51
173-179	68.1"-70.5"	53
180-185	70.9"-72.8"	55
186-191	73.2"-75.2"	57
192-207	75.6"-81.5"	60

*The sizing measurements are orientative.

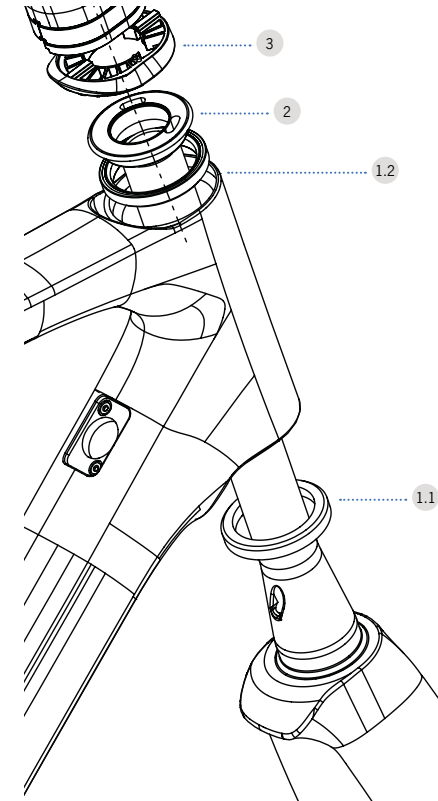
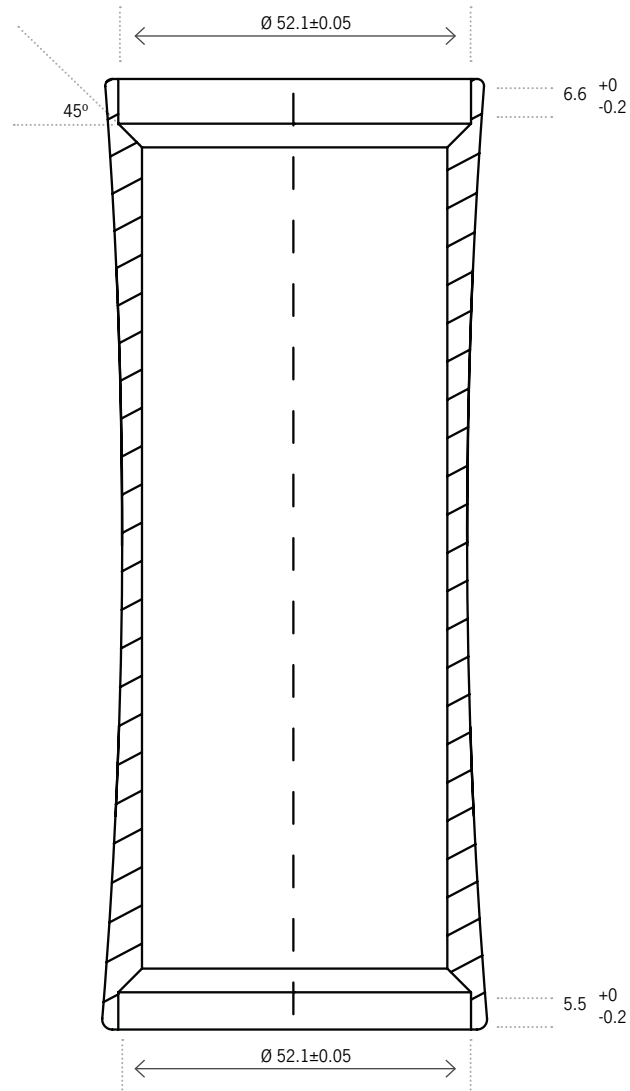
**The ICR01 stem is available in sizes from 80mm to 130mm in 10mm increments.

TECHNICAL SPECIFICATIONS

MATERIAL	
FRAME	ORBEA CARBON OMX
FORK	ORBEA CARBON OMX
AVAILABLE SIZES	47-49-51-53-55-57-60
STEM	ORBEA COMPONENTS ICR01 (INTERNAL CABLING) ONLY
FORK RAKE	48mm(SIZES 47, 49, 51) and 43mm (TALLAS 53, 55, 57, 60)
MAXIMUM HEADSET SPACERS STACK	40MM
FORK STEERER TUBE	TAPERED 1 1/8-1.5
WHEEL SIZE	700C. 28"
MAXIMUM TYRE WIDTH	700x32C
BOTTOM BRACKET	BB386EVO. DIAMETER 46MM
HEADSET BEARINGS	1" 1/2-1" 1/2 (UPPER BEARING WITH 1 1/8-1 1/5 ADAPTER FOR INTERNAL CABLING)
FRONT AXLE	12X100
FRONT AXLE THREAD PITCH	MAVIC SPEED RELEASE P1.0
REAR AXLE STANDARD	12x142
REAR AXLE THREAD PITCH	MAVIC SPEED RELEASE P1.0
REAR DROPOUTS	THRU-AXLE/SPEED RELEASE
SEATPOST DIAMETER	AERO ORCA OMX SPECIFIC
SEATPOST CLAMP	ORCA OMX SPECIFIC (INTEGRATED)
MINIMUM INSERTION	90MM
SEATPOST LENGHT	350MM
FRONT DERAILLEUR	DOWNPULL. BRAZE-ON
FRONT DER. ANGLE	63°
BIG CHAINRING MAX. SIZE	55T
OVAL CHAINRING COMPATIBLE	YES

BIG OVAL CHAINRING MAX. SIZE	55T
SMALL OVAL CHAINRING MAX. SIZE	42T
TRIPLE CRANKSET	NO
DERAILLEUR HANGER	STANDARD AND DIRECT MOUNT
DRIVETRAIN COMPATIBILITY	SHIMANO 11V SRAM 11V Y 12V CAMPAGNOLO 11V
FRONT BRAKE	DISC ONLY. FLAT MOUNT 140MM
MAX. FRONT ROTOR DIAMETER	160MM
REAR BRAKE	DISC ONLY. FLAT MOUNT 140MM
MAX. REAR ROTOR DIAMETER	160MM
CALIPER BOLT LENGHT	30MM
CABLING	INTERNAL (BRAKE AND GEARS) IN DOWNTUBE AND CHAINSTAYS WITH OUTER CABLE IN DOWNTUBE INTERNAL BRAKE CABLE ROUTING IN FORK BLADE
BOTTLE HOLDER	2
COMPATIBLE DI2 Y EPS	YES. INTERNAL BATTERY ONLY. BATTERY HOLDER SPECIFIC ORCA OMX SEATPOST EPS ONLY WITH BATTERY V3
MUDGUARD COMPATIBLE	NO
RACK COMPATIBLE	NO
POWERMETER COMPATIBILITY	SRM: YES (11S Y 10S) POWER2MAX: YES STAGES: CHECK STAGES COMPATIBILITY DOCUMENTATION ROTOR POWER: YES QUARQ: YES POWERTAP: YES
UCI LEGAL	YES

HEADSET



ORCA OMX HEADSET BEARINGS

01	KIT N°: Y0000166	QUANTITY
1.1	LOWER BEARING 1-1/2	1
1.2	UPPER BEARING 1-1/2 INTERN. CABLING	1

COMPRESSION RING, INTERNAL CABLING

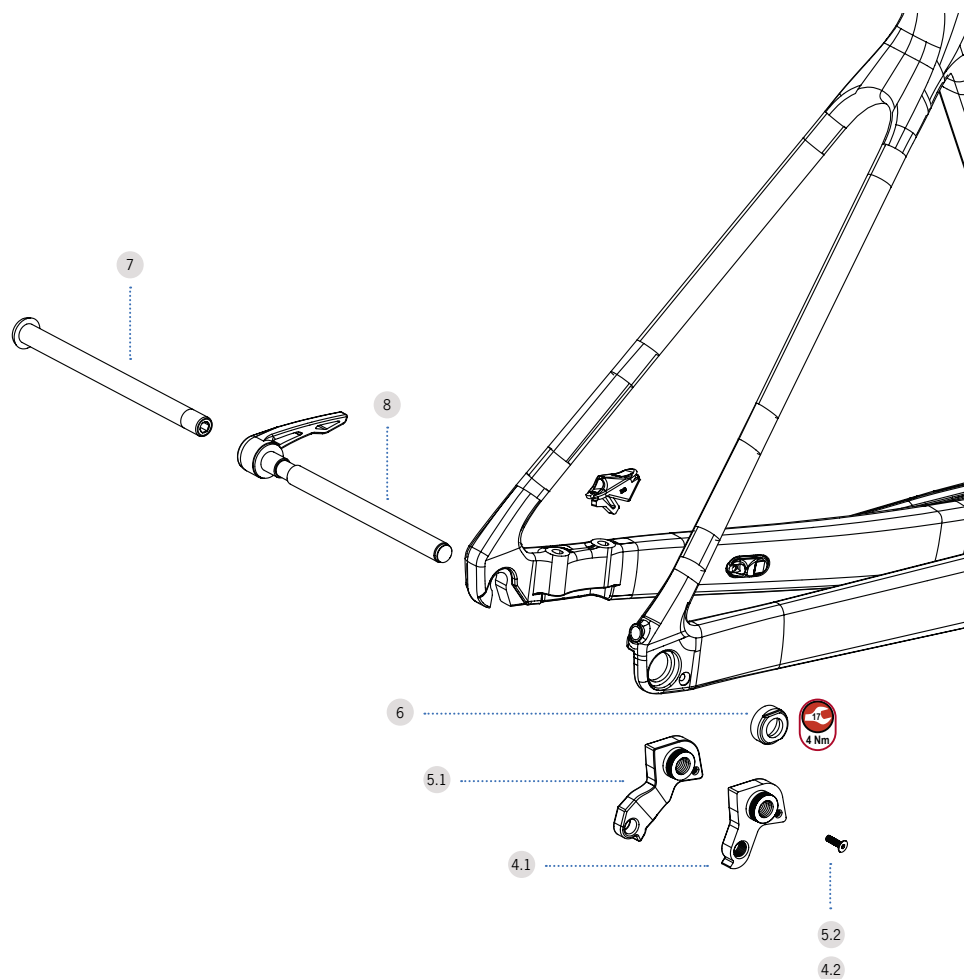
02	ART N°: 14030103	QUANTITY
	COMPRESSION RING, INTERNAL CABLING	1

HEADSET-FRAME CAP INTERN. CABLING

03	ART N°: 11030033	QUANTITY
	HEADSET-FRAME CAP INTERN. CABLING	1

AXLES AND DERAILLEUR HANGER

FRONT AXLE



STANDARD ORCA OMX DER. HANGER

04	KIT N°: Y0000157	QUANTITY
4.1	DER. HANGER ROAD 20 X12	1
4.2	BOLT M4x12	1

DIRECT MOUNT ORCA OMX DER. HANGER

05	KIT N°: Y0000158	QUANTITY
5.1	DM DER. HANGER ROAD 20 X12	1
5.2	BOLT M4x12	1

NUT M18 HANGER X12 ORCA OMX

06	ART N°: 12310052	QUANTITY
	NUT M18 HANGER X12 ORCA OMX	1

THRU-AXLE ROAD 12x142 THREAD PITCH 1.0

07	ART N°: 11100094	QUANTITY
	THRU-AXLE ROAD 12x142 THREAD PITCH 1.0	1

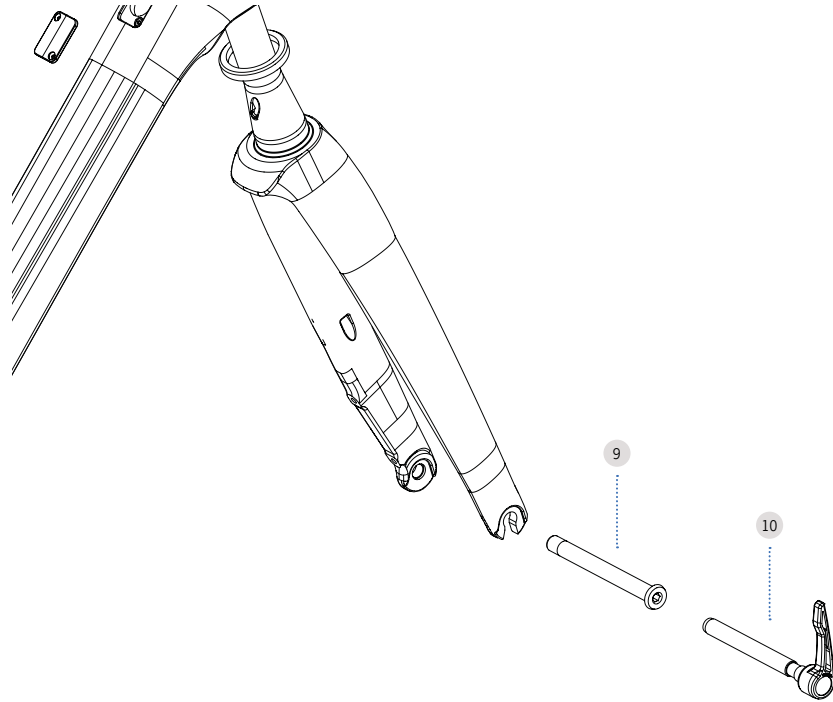
MAVIC SPEED RELEASE AXLE 12X142

08	ART N°: 11103397	QUANTITY
	MAVIC SPEED RELEASE AXLE 12x142	1

Orca OMX is only compatible with thru axles with the Mavic Speed Release standard, with a specific thread pitch "double lead" P1 for faster wheel removal.

AXLES AND DERAILLEUR HANGER

REAR AXLE



THRU-AXLE ROAD 12X100 THREAD PITCH 1.0

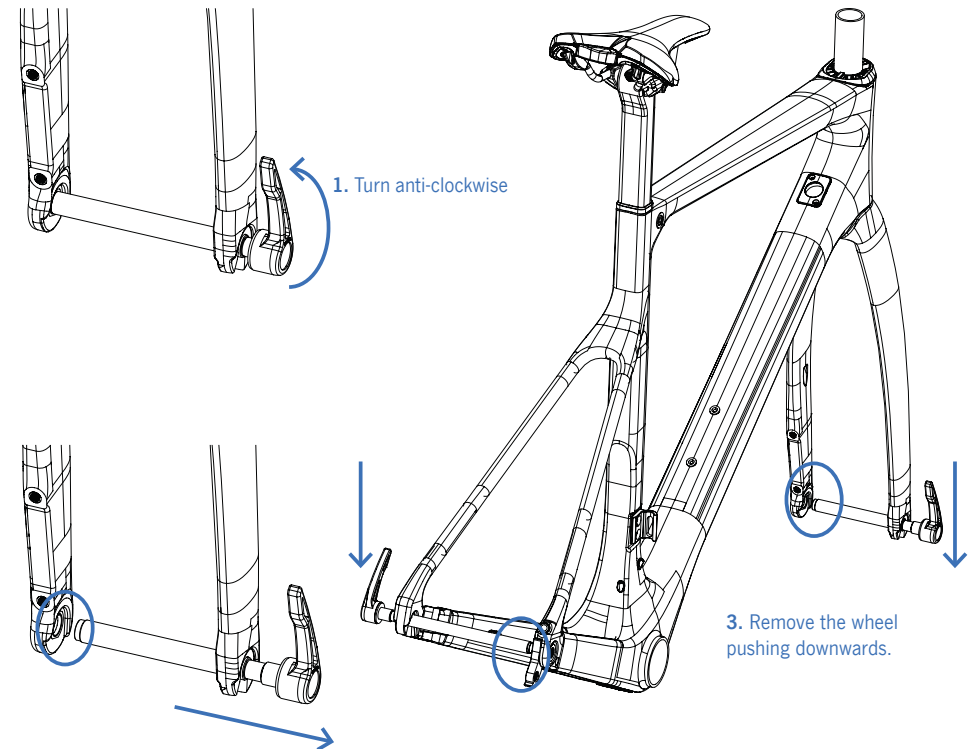
09	ART N°: 11100093	QUANTITY
	THRU-AXLE ROAD 12x100 THREAD PITCH 1.0	1

MAVIC SPEED RELEASE AXLE 12X100

10	ART N°: 11103396	QUANTITY
	MAVIC SPEED RELEASE AXLE 12x100	1

Orca OMX is only compatible with thru axles with the Mavic Speed Release standard, with a specific thread pitch “double lead” P1 for faster wheel removal.

USE OF MAVIC SPEED RELEASE AXLES

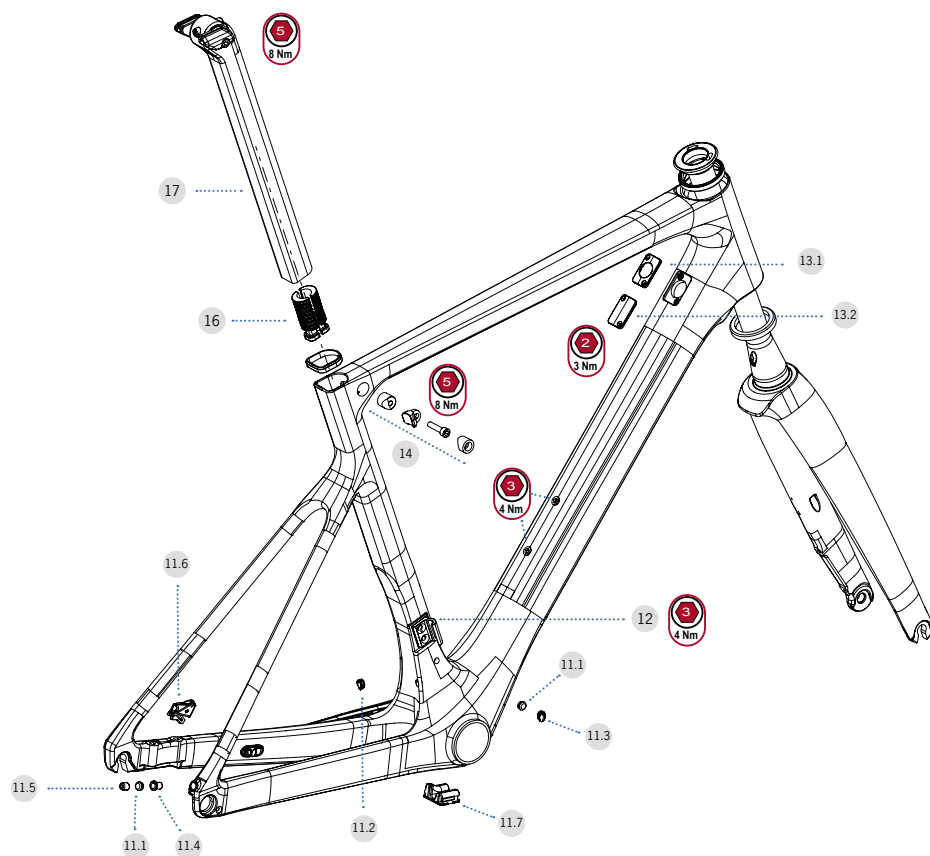


2. Pull from the axle until it is out of the left dropout (front wheel) or right dropout (rear wheel).

TRAINER AXLE COMPATIBILITY

To use Orca OMX on a trainer, it is necessary to use a specific trainer axle with the Mavic Speed Release thread pitch. Using a non-compatible axle will damage the frame.

FRAME HARDWARE



ORCA OMX FRAME STOP/CABLEGUIDE KIT MECH/DI2/ETAP

11	KIT N°: Y0000160	QUANTITY
11.1	BLIND GROMMET MEC/DI2/eTAP	3
11.2	MECH. FRONT DERAILLEUR GROMMET	1
11.3	DI2 FRONT DERAILLEUR GROMMET	1
11.4	REAR DER. CABLE STOP MECHANICAL	1
11.5	REAR DER. DI2 GROMMET	1
11.6	REAR BRAKE CLIP	1
11.7	BB CLIP CABLE GUIDE	1

ORCA OMX FRONT DERAILLEUR HANGER

12	KIT N°: Y0000161	QUANTITY
12.1	FRONT DERAILLEUR HANGER	1
12.2	BOLT M5x16	2

DOWNTUBE DI2/MECH COVER

13	KIT N°: Y0000162	QUANTITY
13.1	DI2 JUNCTION DOWNTUBE COVER	1
13.2	MECHANICAL DOWNTUBE BLIND COVER	1
	BOLT M3x12	2

ORCA OMX SEATPOST CLAMP

14	KIT N°: Y0000172	QUANTITY
	ORCA OMX SEATPOST CLAMP	1

RUBBER SEAL SEATPOST ORCA OMX

15	ART N°: 11160008	QUANTITY
	RUBBER SEAL SEATPOST ORCA OMX	1

DI2 BATTERY HOLDER ORCA OMX

16	KIT N°: Y0000172	QUANTITY
	DI2 BATTERY HOLDER ORCA OMX	1

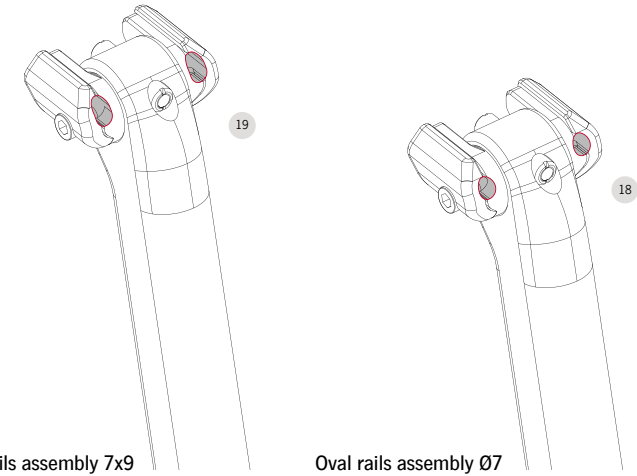
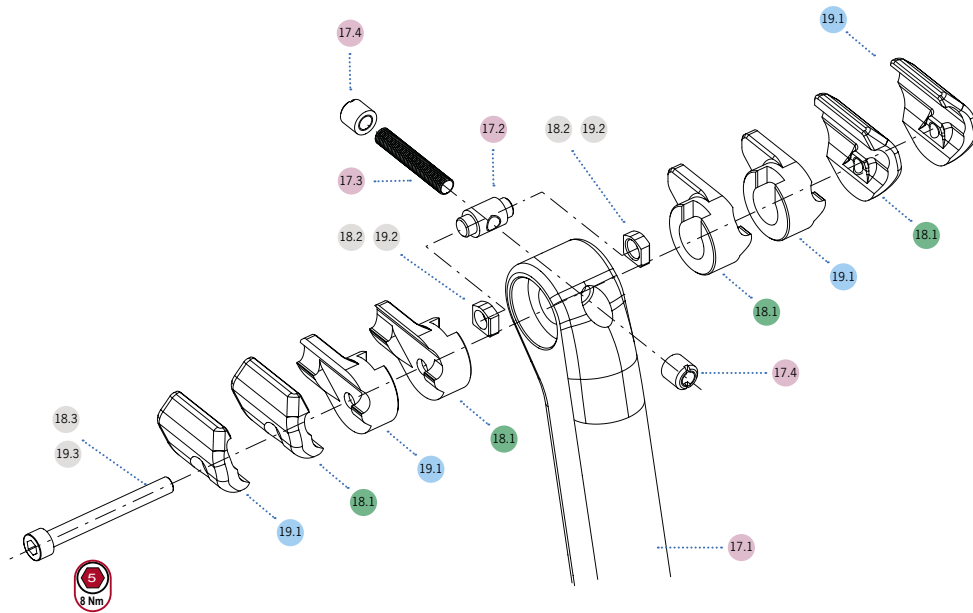
ORCA OMX SEATPOST (WITHOUT SADDLE CLAMP ASSEMBLY)

17	KIT N°: Y0000163	QUANTITY
	ORCA OMX SEATPOST 350mm	1
	OMX SEATPOST BARREL NUT	1
	OMX SEATPOST TILT BOLT	1
	OMX SEATPOST TILT NUT	2

*Saddle tilt assembly pre-assembled with orca OMX seatpost.

SEATPOST

ASSEMBLY AND HARDWARE ORCA OMX SEATPOST



ORCA OMX SEATPOST (WITHOUT SADDLE CLAMP ASSEMBLY)

17	KIT N°: Y0000163	QUANTITY
17.1	ORCA OMX SEATPOST 350mm	1
17.2	OMX SEATPOST BARREL NUT	1
17.3	OMX SEATPOST TILT BOLT	1
17.4	OMX SEATPOST TILT NUT	2

*Saddle tilt assembly pre-assembled with orca omx seatpost.

ROUND RAILS SADDLE CLAMP ASSEMBLY (7MM)

18	KIT N°: Y0000164	QUANTITY
18.1	ROUND RAILS SADDLE CLAMP ASSEMBLY. 7mm	1
18.2	BUSHING	2
18.3	BOLT M6x53	1

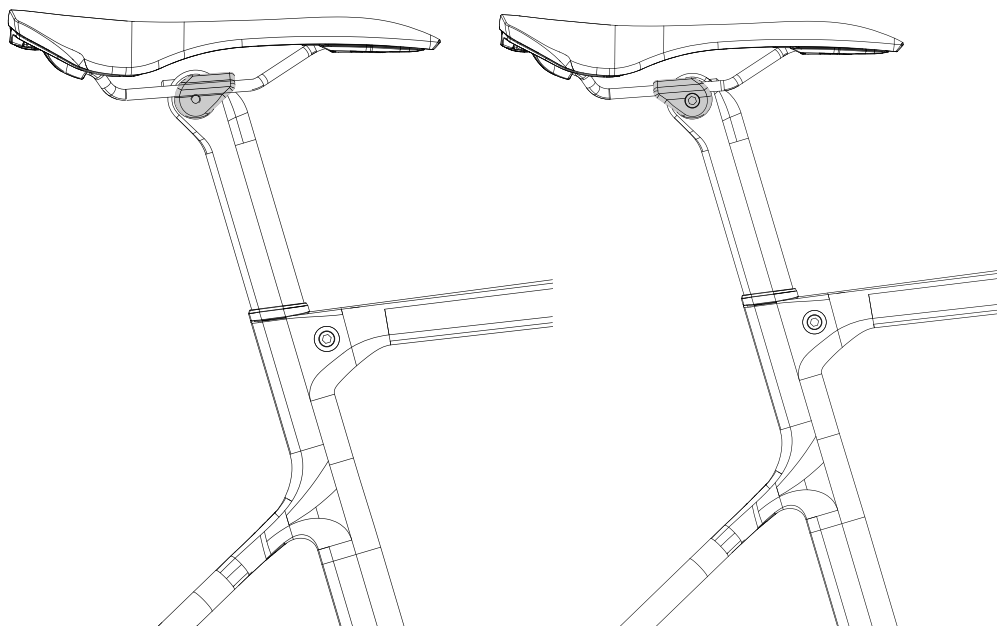
OVAL RAILS SADDLE CLAMP ASSEMBLY (7X9)

19	KIT N°: Y0000165	QUANTITY
19.1	OVAL RAILS SADDLE CLAMP ASSEMBLY. (7x9)	1
19.2	BUSHING	2
19.3	BOLT M6x53	1

SEATPOST

SADDLE SETBACK

Orca OMX seatpost saddle clamp can be used in two positions (0mm and 25mm setback).



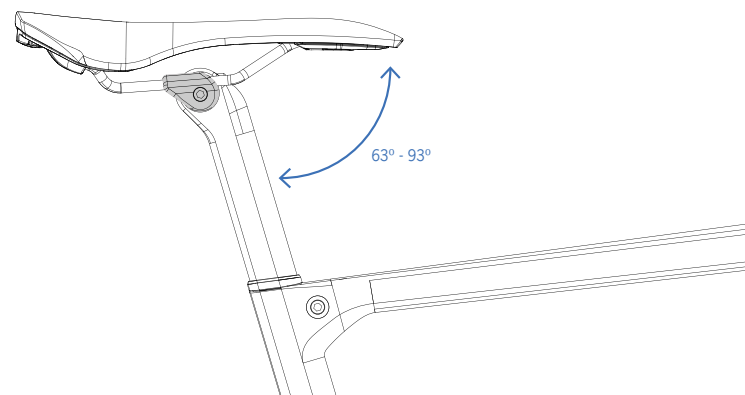
Setback 0mm
Note: Saddle clamp bolt's head on the left.

Setback 25mm
Note: Saddle clamp bolt's head on the right.

SEATPOST

SADDLE'S TILT ADJUSTMENT

Orca OMX seatpost allows to adjust the saddle's tilt angle from 63° to 93°. The adjustment range depends on the saddle characteristics (angle between the saddle's rails and the saddle's surface) and the seat tube angle depending on the frame's size.

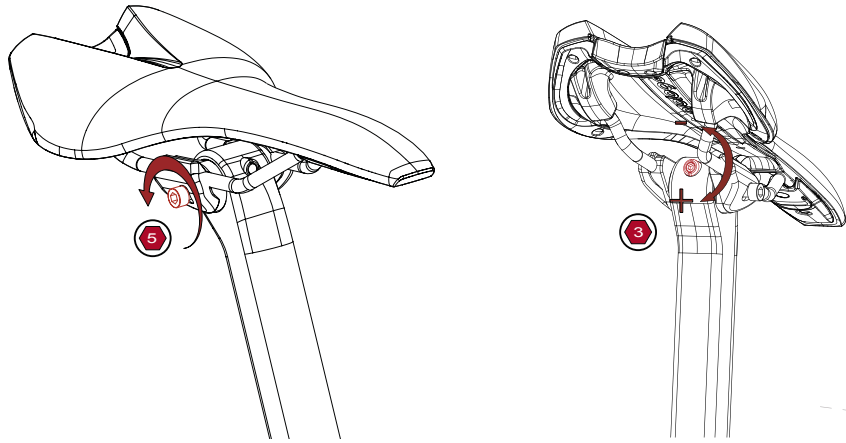


ORCA OMX 47 ORCA OMX 49 ORCA OMX 51 ORCA OMX 53

SADDLE	Rail Angle	ST=74,5°		ST=74°		ST=73,7°		ST=73,5°	
		Nose Up	Nose Down	Nose Up	Nose Down	Nose Up	Nose Down	Nose Up	Nose Down
Neutral Saddle	0	18,5	-11,5	19	-11	19,3	-10,7	19,5	-10,5
Medium Rail Angle	5	13,5	-16,5	14	-16	14,3	-15,7	14,5	-15,5
Extreme Rail Angle	7	11,5	-18,5	12	-18	12,3	-17,7	12,5	-17,5

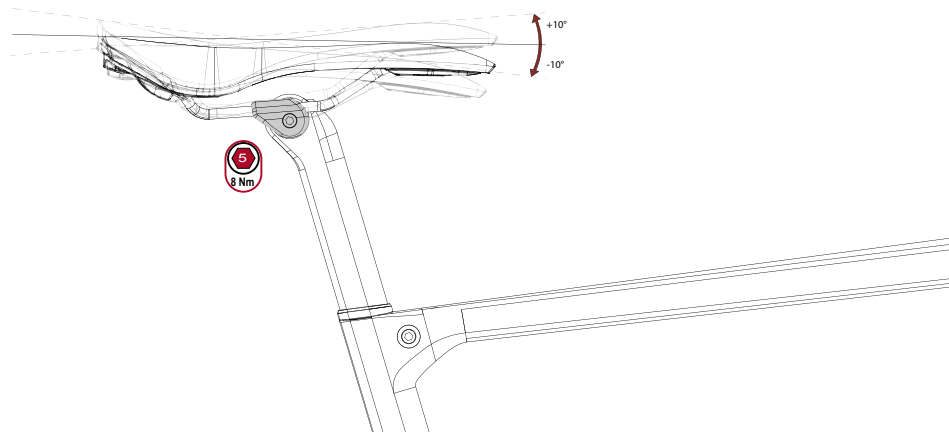
ORCA OMX 55 ORCA OMX 57 ORCA OMX 60

SADDLE	Rail Angle	ST=73,5°		ST=73,2°		ST=73,2°	
		Nose Up	Nose Down	Nose Up	Nose Down	Nose Up	Nose Down
Neutral Saddle	0	19,5	-10,5	19,8	-10,2	19,8	-10,2
Medium Rail Angle	5	14,5	-15,5	14,8	-15,2	14,8	-15,2
Extreme Rail Angle	7	12,5	-17,5	12,8	-17,2	12,8	-17,2



1. Loosen the M6x53 bolt

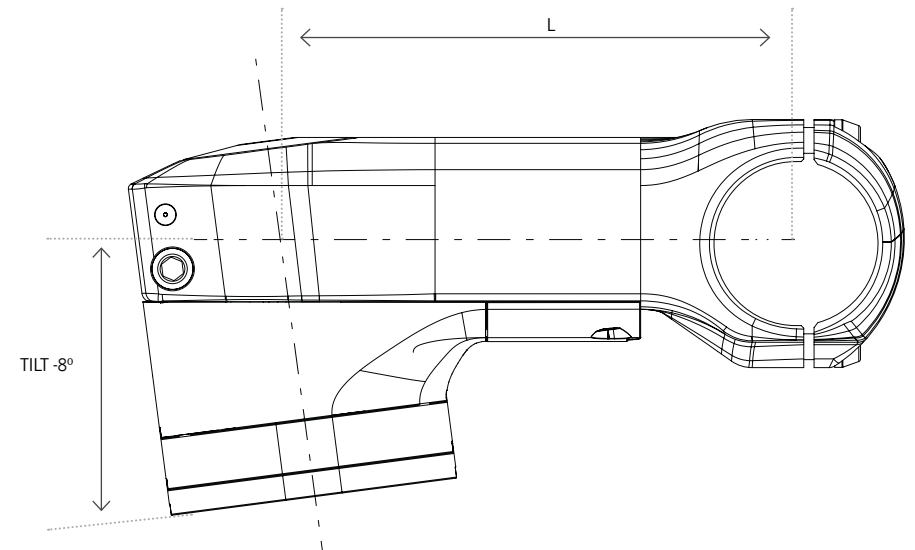
2. Turn the adjustment nut clockwise to bring the saddle's nose up (+10°) and counter-clockwise to bring it down (-10°)



3. Tighten the M6x53 bolt to the recommended torque setting.

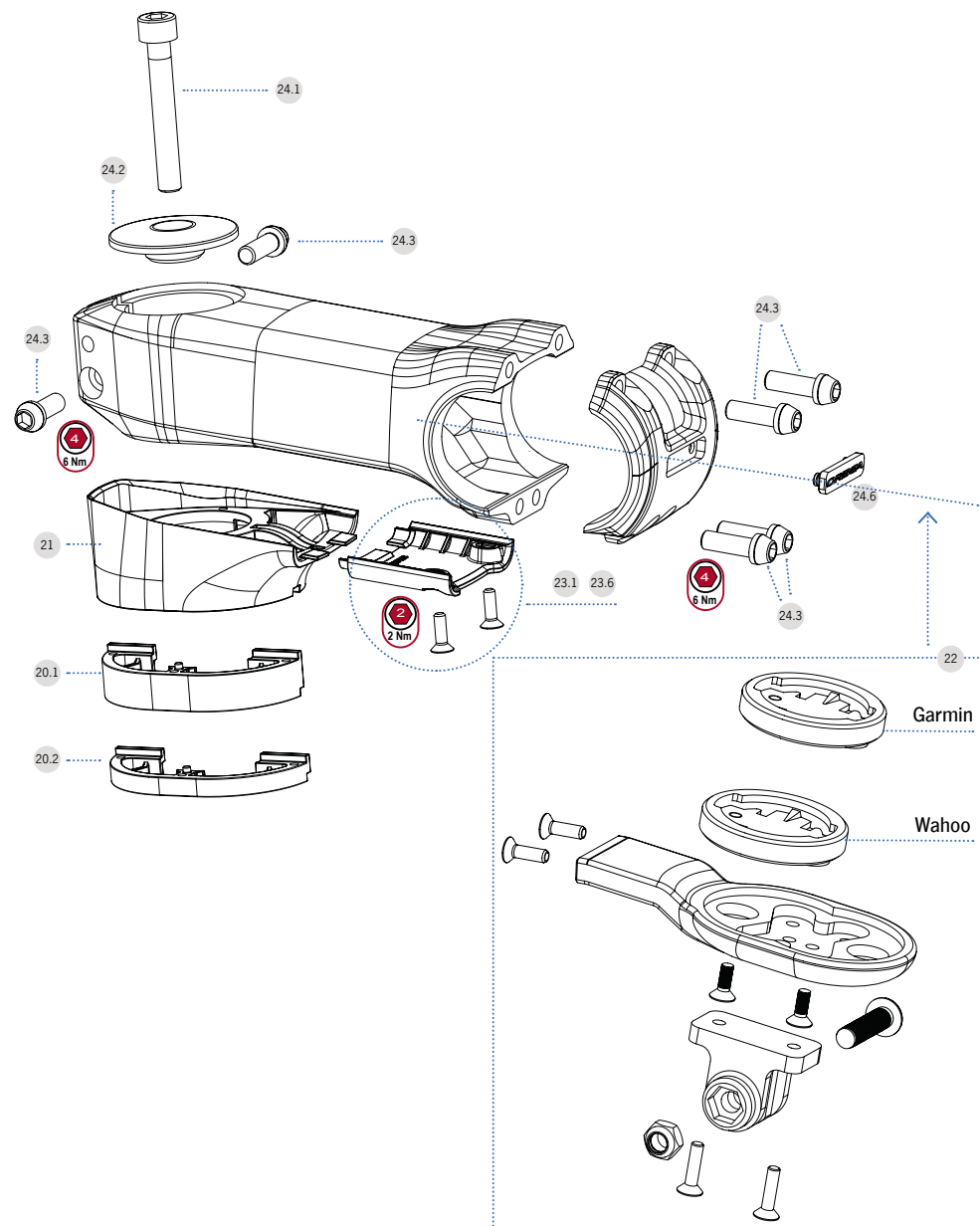
ICR01 STEM SPECIFICATIONS

STEERER Ø	1" 1/8
HANDLEBAR Ø	31,8 mm
FRAME	
Headtube external max.Ø	58 mm
Upper bearing external race max.Ø	52 mm
INTERNAL CABLING	Up to 2 brake hoses and 2 gear cable outers
SHIMANO Di2	Internal cabling into stem with internal cabling handle-bars
COMPUTER BRACKET	MAX. COMPUTER SIZE GARMIN 1030
AVAILABLE LENGHTS	80, 90, 100, 110, 120, 130
ANGLE	-8°



ICR01 STEM

HARDWARE AND ASSEMBLY



ICR01 STEM HEADSET SPACERS KIT

20	KIT N°: Y0000167	QUANTITY
20.1	ICR01 10mm SPACER	2
20.2	ICR01 5mm SPACER	2

ICR01 STEM ANGLE SPACER

21	ART N°: 11140119	QUANTITY
	ICR01 STEM ANGLE SPACER	1

COMPUTER BRACKET KIT STEM ICR01/RO1

22	KIT N°: Y0000168	QUANTITY
	CAMERA BRACKET	1
	GARMIN/WAHOO ADAPTER	1
	COMPUTER BRACKET	1
	BOLT M3x10	2

ICR01 STEM LOWER COVER 80MM

23.1	KIT N°: Y0000182	QUANTITY
	ICR01 STEM LOWER COVER 80mm	1
	BOLT M3x10	2

ICR01 STEM LOWER COVER 90MM

23.2	KIT N°: Y0000183	QUANTITY
	ICR01 STEM LOWER COVER 90mm	1
	BOLT M3x10	2

ICR01 STEM LOWER COVER 100MM

23.3	KIT N°: Y0000184	QUANTITY
	ICR01 STEM LOWER COVER 100mm	1
	BOLT M3x10	2

POTENCIA ICRO1

PIECERÍO Y MONTAJE

ICRO1 STEM LOWER COVER 110MM

23.4 KIT N°: Y0000185	QUANTITY
ICRO1 STEM LOWER COVER 110mm	1
BOLT M3x10	2

ICRO1 STEM LOWER COVER 120MM

23.5 KIT N°: Y0000186	QUANTITY
ICRO1 STEM LOWER COVER 120mm	1
BOLT M3x10	2

ICRO1 STEM LOWER COVER 130MM

23.6 KIT N°: Y0000187	QUANTITY
ICRO1 STEM LOWER COVER 130mm	1
BOLT M3x10	2

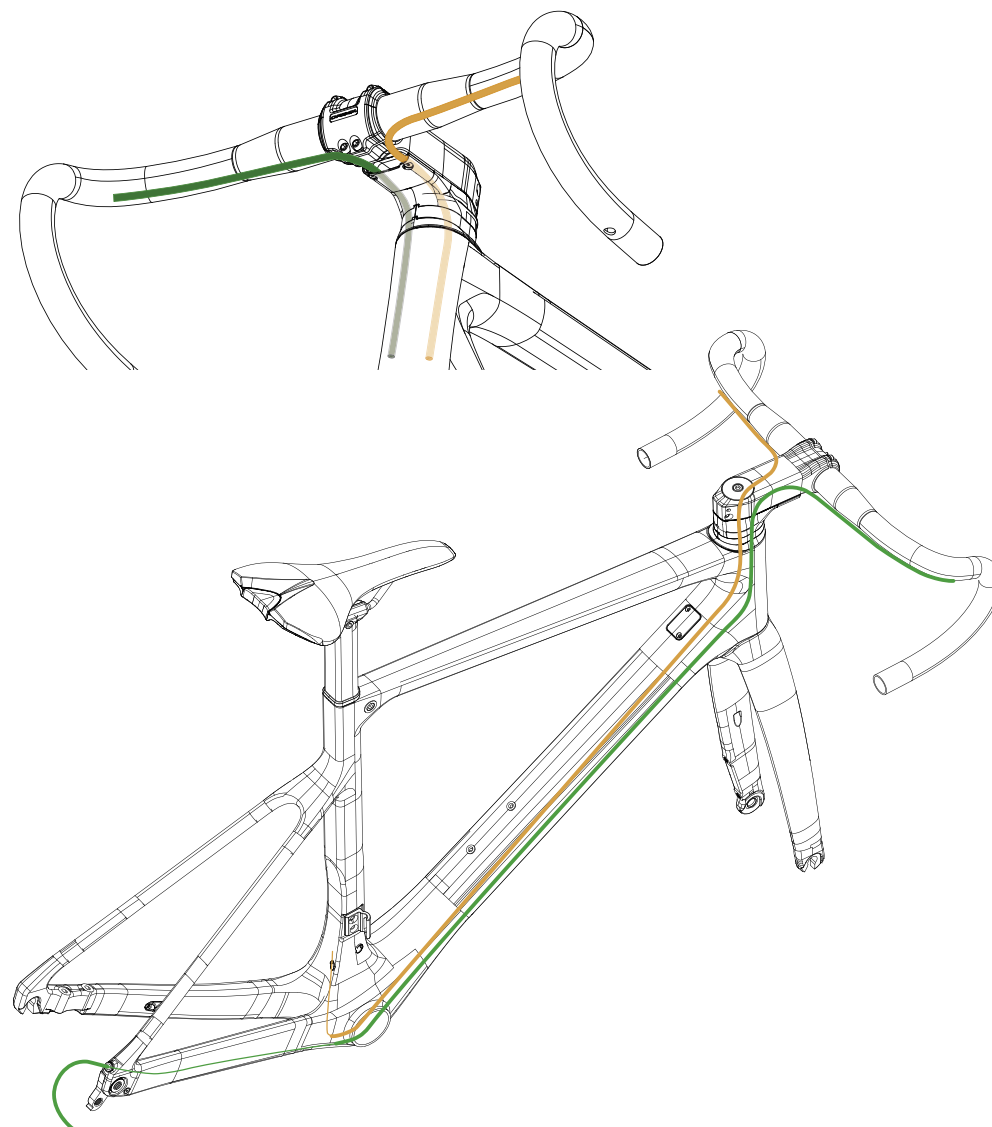
The ICRO1 stem is available in lengths from 80mm to 130mm in 10mm increments
The stem lower cover is specific for each length.

ICRO1 STEM HARDARE KIT

24 KIT N°: Y0000169	QUANTITY
24.1 BOLT M6x40 TOP CAP	1
24.2 TOP CAP	1
24.3 BOLT M5x15 DIREC. AND FACEPLATE	6
24.4 FACEPLATE	1
BOLT M3x10	2
24.6 LOGO ORBEA FACEPLATE	1

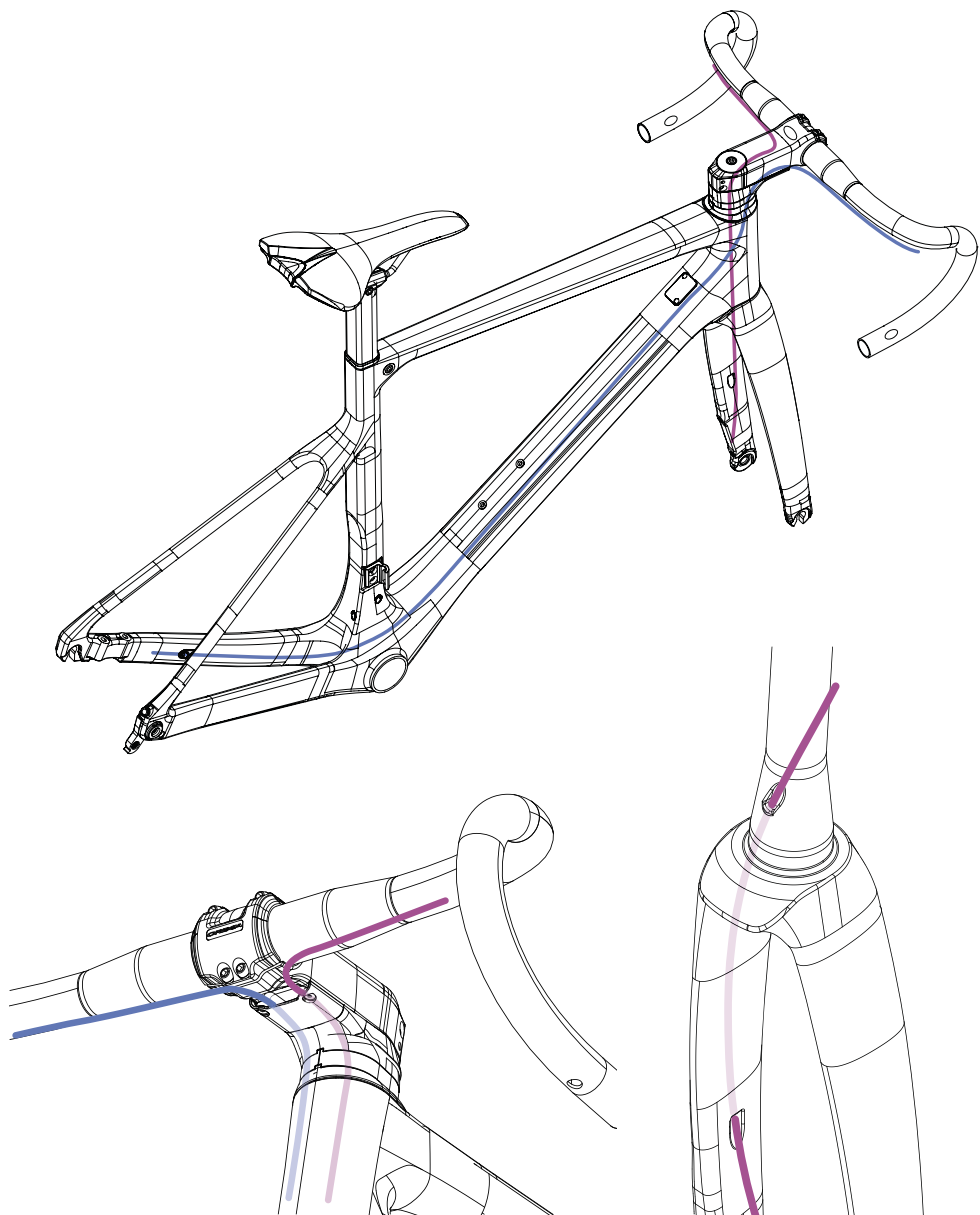
CABLING

MECHANICAL GROUPSETS FRONT AND REAR DERAILLEUR CABLING



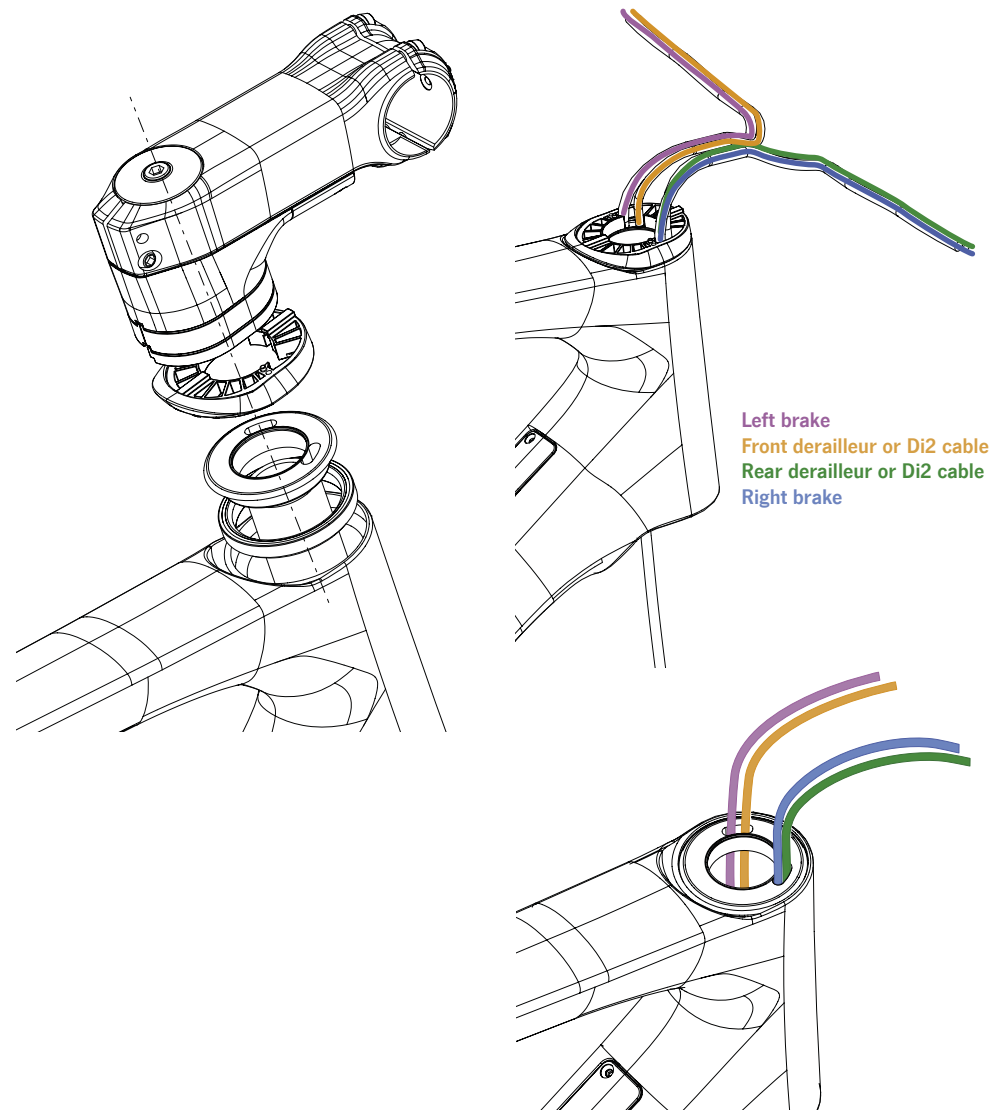
CABLING

BRAKE HOSES ROUTING



CABLING

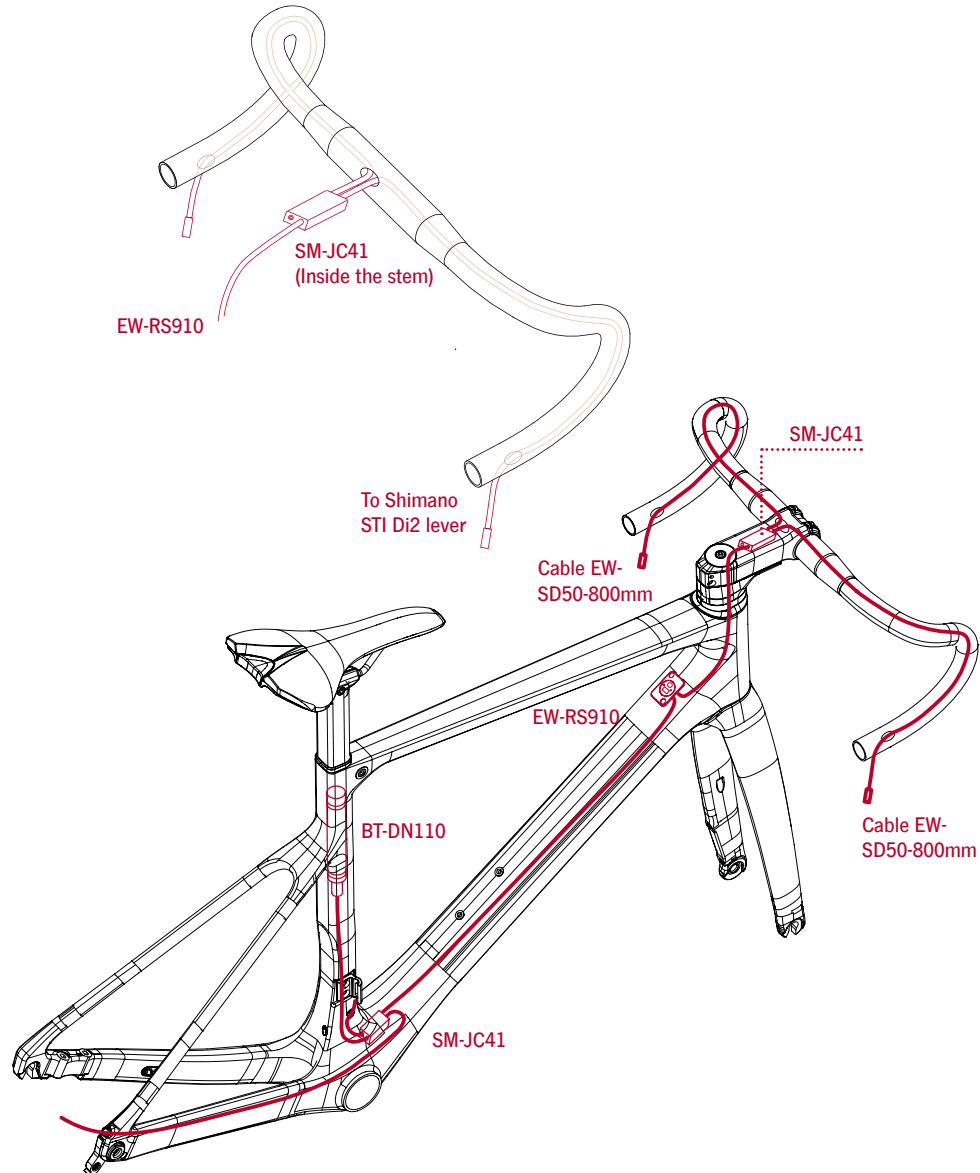
ROUTING THROUGH THE HEADSET-FRAME CAP AND THE UPPER BEARING ADAPTER



CABLING

SHIMANO DI2 ELECTRONIC GROUPSETS CABLING

Internal cabling on OC Components handlebars OC1 Alloy, OC2 Alloy, OC2 Carbon, OC1 AllRoad Alloy



HEADSET SPACERS/CUTTING THE STEERER TUBE

Due to the front brake hose being internally routed through the fork's blade and steerer tube, removing the fork on Orca OMX requires to disconnect the front brake caliper hose.

However, it is not necessary to disconnect the front caliper to cut the fork's steerer tube to the desired height. Simply disassemble the ICRO1 stem from the steerer tube and remove the headset spacers (these can be split in two halves to allow you to remove them without interfering with the cabling).

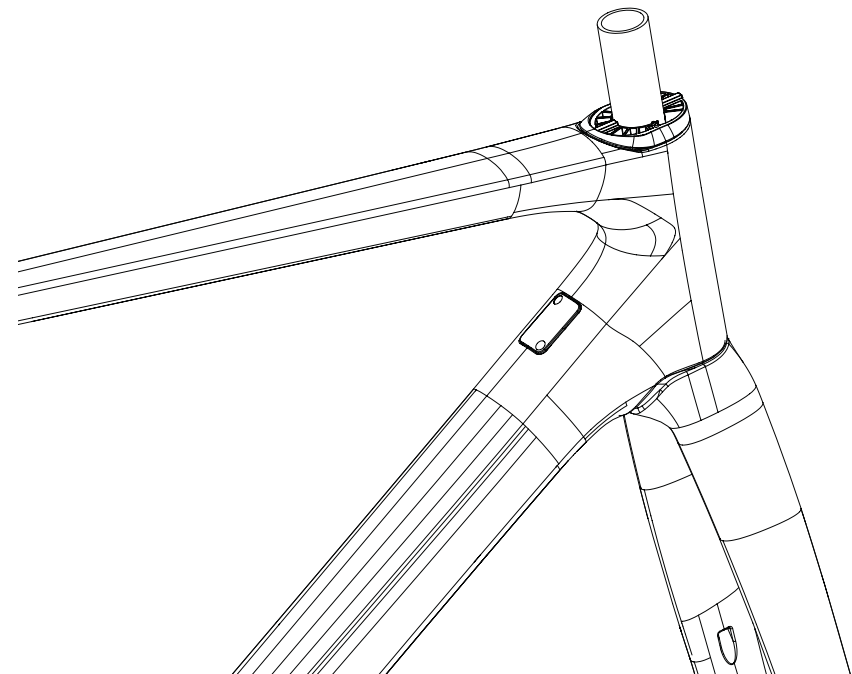
With the fork completely inserted into the headtube and the bike positioned so the fork is horizontally positioned to avoid debris from falling into the headset, use a steerer tube cutting guide and a carbon specific saw to cut the steerer to the desired height. Measure the final height of all components before cutting the steerer.

When cutting, be careful not to damage any components or cables.

The installation or removal of headset spacers does not require to remove any cables. They are composed of two halves that allow for easy installation without interfering with the cabling.

When installing headset spacers (40mm maximum), make sure that the steerer tube is long enough to allow for a correct and safe installation of the stem and that the cables are long enough.

IMPORTANT: Never install headset spacers above the stem. The steerer tube length must be set so no spacers are needed above the stem.



MAINTENANCE

Orbea products are carefully designed to be long-lasting, efficient and easy to maintain. The carbon and aluminum frames on the Orca OMX are extremely corrosion-resistant. However, your Orbea bicycle needs regular maintenance of its components in order to work properly and to ensure their longevity.

1) KEEP YOUR ORCA OMX CLEAN

Washing your bike with mild soap and water will keep you looking stylish and allow you to check the condition of the frame and components. Don't use high water pressure and avoid spraying water into bearings or frame tubes. Citrus degreasers are biodegradable and do a great job of removing dirty grease from gears and chain.

2) KEEP YOUR ORCA OMX LUBED

Once your bike is clean, it's a good time to put fresh lube on the chain. Use only enough to get inside the links and wipe off any excess because it will attract dirt. Headset and pivot bearings should be inspected every few months for smoothness and to ensure that the seals are intact and lube is clean.

3) INSPECT YOUR ORCA OMX BEFORE YOU RIDE

Do a quick check before every ride to make sure your bike is in excellent condition. It is very common to discover small issues at home that can become big problems on the trail. **CHAIN** Is the chain dirty, noisy or dry? Clean and lube your chain before riding. **BRAKES** Check your brakes to make sure they are working correctly. Check for missing/loose caliper and rotor bolts. **TIRES** Look for damage to the sidewalls of your tires. Check and adjust tire pressure. **WHEELS** Spin the wheels and look for wobbles, check for loose or broken spokes. Check quick release levers to make sure they are functioning properly. **FRONT END** Stand over the saddle, pull on the brakes and rock the bike back and forth. Feel for any play or knocking that might indicate a loose headset, loose brake rotors or calipers, or worn fork bushings.

TEST RIDE Take a quick ride up and down the street to make sure your bike is shifting and braking properly. Listen for unusual noises.

4) BEARINGS

Bearings are one element subject to wear and tear. They must be in good condition to ensure that the other parts of the bicycle work correctly: on the wheels, the steering column and the bottom bracket.

Regularly check to make sure that the bearings turn freely in their housing and there are no signs of lateral play. Bearings that do not turn properly or that have any lateral play must be replaced immediately in order to prevent wear and tear to the parts of the frame. Very damp weather conditions can cause the bearings to wear out faster. Avoid washing your bicycle with pressurized water hoses. If you have any questions, take your bicycle to an Orbea dealer for correct diagnosis and maintenance.

AFTER A CRASH OR IMPACT

Falling is part of riding and it's impossible to avoid minor accidents. If you crash your Orca OMX, please make sure you are okay and seek medical attention if necessary. If you are not injured, you should check your bike before continuing:

1) Inspect your frame and components for damage. Do not ride your bike if any problems are detected.

WHAT TO LOOK FOR

Inspect Frame and fork for evidence of cracking or bending. If cracks are discovered, discontinue use immediately.

Check the drivetrain and spin the wheels to make sure components are operating correctly. If you discover damage to your components, discontinue use immediately.

Even if you don't find any damage, pay careful attention to the sound of your bike when you continue riding. Unusual noises can be caused by cracks or other problems. A well-maintained bike will be quiet and free of creaks or squeaks. Investigate and locate the source of any new noises.

2) Bring your bike to your Orbea dealer for professional inspection. Some damage can only be detected by disassembling the bike to check for cracks or other signs of stress.

A crash or impact can put extraordinary stress on your bike and components, causing them to fail or to fatigue prematurely. Failure can happen suddenly with no warning, causing loss of control, serious injury or death.

ORBEA WARRANTY

The constant effort we make every day to produce the highest quality bicycles enables us to offer the following warranty and coverage conditions:

LEGAL WARRANTY

Orbea guarantees its products by law for a period of 2 years or whatever has been stipulated as the legal warranty period in the country where the purchase was made, to the original owner of the bicycle/component.

This warranty covers Orbea products against manufacturing defects and/or lack of conformity and guarantees the repair or replacement of the defective product at no cost to the affected customer. Likewise, this warranty also covers paint, varnish and corrosion defects on all frames and rigid forks assembled on our bicycles during the period specified in the first paragraph of this warranty.

This warranty does not cover in any case damage derived from misuse or the lack of maintenance, or from the normal wear and tear of perishable parts, such as, but not limited to: seals, bearings, handlebar tape, spokes, hub, threads, tires, seat, etc.

See the full description of the coverage and the legal warranty conditions at:
<https://www.orbea.com/int-en/warranty-benefits/>

ORBEA LIFETIME WARRANTY

As a complement to the legal warranty, Orbea offers the original buyer of the bicycle, under the condition of having registered their bicycle on the Orbea website within a period of 30 days following its purchase, the Orbea Lifetime Warranty, which covers the frames and rigid forks we assemble on our bicycles, with no time limit, against manufacturing defects.

This warranty extends the original period of coverage against paint, varnish or corrosion defects on our frames and rigid forks for one additional year after the end of the legal warranty period.

See the full description of the coverage and the Lifetime Warranty conditions at:

<https://www.orbea.com/int-en/warranty-benefits/>

REGISTER YOUR BICYCLE

In order to benefit from the extension of the Orbea Lifetime Warranty, register your bike within the first 30 days of having purchased it at www.orbea.com

01. REGISTER YOUR ACCOUNT



02. REGISTRATION NUMBER

MY INFORMATION WARRANTY REGISTRATION ORDERS YOUR SAVED BIKES BIK

ACTIVATE YOUR REGISTRATION NUMBER

Enter bike's registration number and start enjoying your Orbea warranty.

* REGISTRATION NUMBER Where is my barcode?

* DATE OF PURCHASE - YYYY-MM-DD

* HOW SATISFIED ARE YOU WITH THE ORDERING PROCESS?

Very satisfied Satisfied

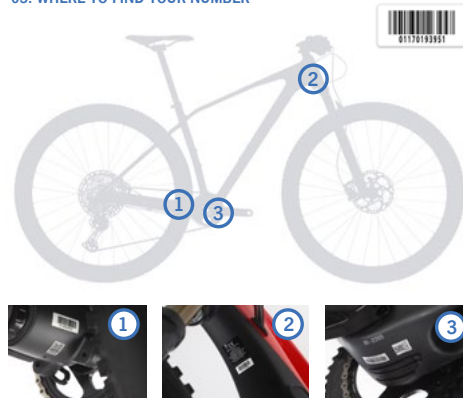
Neither satisfied nor dissatisfied Not satisfied

* HOW SATISFIED ARE YOU WITH THE PRODUCT?

Very satisfied Satisfied

Neither satisfied nor dissatisfied Not satisfied

03. WHERE TO FIND YOUR NUMBER



WARRANTY CLAIM PROCESS

All warranty claim processes must be processed through an Orbea dealer, who will provide the company with the necessary documentation for the diagnosis of said claim. The dealer will inform the customer of the decision made by Orbea.

ADDITIONAL INFORMATION

ORBEA participates actively on facebook and Twitter with our fantastic global community of riders. Looking to find spots to ride or plan a vacation? Someone will have the answers:

FACEBOOK

www.facebook.com/OrbeaBicycles

TWITTER

www.twitter.com/Orbea/

YOUTUBE

Visit our Orbea Channel on You Tube for a variety of helpful setup and tech videos:

www.youtube.com/user/OrbeaBicycles

INSTAGRAM

www.instagram.com/orbeabicycles

ORBEA CONTENT

View and download photos, videos and documents.

content.orbea.com/us-en/

BLOG ORBEA

www.orbea.com/es-es/blog/

YOUR ORBEA DEALER

Our dealers are experts and should be able to assist you with setting up and maintaining your Orbea bicycle. A complete listing of Orbea dealers and distributors can be located on our website:

www.orbea.com/us-en/dealers/?country=INT

SUPPORT

For technical questions about Orbea products, write to:
support@orbea.com

For any other question:
orbea@orbea.com



ORBEA

WWW.ORBEA.COM