



Stop! Read this manual carefully before using this product!

12, 16, 20

Manual Covers The Max. Max. Max. Following Products Jumpers Users Weight

Manual Covers The Following Products	Max. Jumpers	Max. Users	Max. Weight
Rebound™ 12'	One (1)	Three (3)	600 lbs. (272 kg)
Rebound™ Aquapark Set 12'	One (1)	Three (3)	600 lbs. (272 kg)
Rebound™ 16'	Three (3)	Five (5)	1000 lbs. (454 kg)
Rebound™ Aquapark Set 16'	Three (3)	Five (5)	1000 lbs. (454 kg)
Rebound™ 20	Three (3)	Seven (7)	1200 lbs. (544 kg)

It is the owner's responsibility to read the owner's manual and instruct all users in the safe operation of these products. By inflating these products you hereby agree to the Release of Liability, Claim Waiver, and Assumption of Risk Agreement in this manual. Please read this manual prior to inflating and using these products and keep for future reference. As with any action sport, recklessness, inexperience, misuse, or neglect of the equipment may result in serious injury or death.

Contents Per Product: No Special Tools Required To Assemble Your New Rebound™ Bouncers

Rebound™ Bouncer 12' – (1) Rebound™ Tube, (1) SwimStep™ Access Platform, (2) Interloc™ Straps, (1) Repair Kit

Rebound™ Aquapark Set 12' – (1) Rebound™ Tube, (1) Rebound™ Slide, (1) i-Log, (1) SwimStep™ Access Platform, (6) Interloc™ Straps, (1) Repair Kit

Rebound™ Bouncer 16' – (1) Rebound™ Tube, (1) SwimStep™ Access Platform, (2) Interloc™ Straps, (1) 4-Way Mooring Bridle, (1) Repair Kit

Rebound™ Aquapark Set 16' – (1) Rebound™ Tube, (1) Rebound™ Slide, (1) i-Log™, (1) SwimStep™ Platform, (1) 4-Way Bridle, (6) Interloc™ Straps, (1) Repair Kit

Rebound™ 20' – (1) Rebound™ Tube, (1) SwimStep™ Platform, (1) 4-Way Bridle, (1) Repair Kit

Watersports Safety Code

Watersports are fun and challenging but involve inherent risks of injury or death. To increase your enjoyment of the sport and to reduce your risks, use common sense and follow these rules:

Before you start:

- Familiarize yourself with all applicable federal, state, and local laws, the risks inherent in the sport, and the proper use of the equipment.
- Know the waterways.
- Use caution and common sense.
- Do not use in recreational swimming pools, within 3.0m (10ft.) of commercial pool edge, or within 4.5m (15ft.) of boats, docks, or other hard obstructions.
- Do not attempt or allow somersaults. Landing on the head or neck can cause serious injury, paralysis or death.
- Never use at night, or in low-light conditions.
- Never use in poor weather conditions with excessive wind, waves or lightning.
- Do not use on dry land.
- Do not use without proper anchoring.
- Do not dive head first or swim under your Rebound™.
- Take extreme care when swimming between the shore and the product. Be cautious of any boat traffic or other obstructions. Ensure all users are capable swimmers and are not excessively fatigued. Do not allow anyone to attempt to swim to or from the product that are not physically able to do so.
- Always ensure that the swimming area around the product is free of submerged logs, rocks and sandbars. Ask about the local water conditions before use.
- Only allow use of the product with proper supervision. Secure the product when not in use to prevent access by any other users.
- Do not jump or dive from this item.
- Do not jump onto this item from any other item.

WARNING

USE OF THIS PRODUCT AND PARTICIPATION IN WATERSPORTS INVOLVES INHERENT RISKS OF INJURY OR DEATH.

- This product should never be used by children except under adult supervision.
- Not intended for use by children under 5 years of age.
- This product is not a personal flotation device.
- Always wear a U.S. Coast Guard approved Type III (PFD) vest.
- Never place wrists or feet through handles, straps or rings.
- Do not use in water less than 48" (1.2m) deep or near docks, pilings, swimmers or boats.
- Never swim under the product.
- Do not exceed the manufacturer's recommended number of users for your particular product.
- Do not use while under the influence of alcohol or drugs.
- Read Operator's Manual before use.

CAUTION

Watersports can be safe and fun for all levels of enthusiasts. The Operator's Manual is presented to enhance your enjoyment of the sport. It is intended to alert you to some of the potentially dangerous conditions that can arise in all watersports. It is the owner's responsibility to read the owner's manual and instruct all users in the safe operation of these products. By inflating these products you hereby agree to the Release of Liability, Claim Waiver, and Assumption of Risk Agreement in the Owner's Manual.

To reduce the risk of injury or death, follow these guidelines:

- Carefully read the product Owner's Manual and follow the instructions.
- Take all reasonable precautions in the use and operation of your trampoline and/or aquapark.
- Teach anyone using your trampoline and/or aquapark about safe guidelines prior to use.
- Know your own limits. Stop when you are tired. Act responsibly. Be in good physical condition and be cautious in your use of this or any other water sports product.
- Periodically check mooring bridles and/or lines to ensure safety. Replace any portion of mooring and/or connection system that shows signs of wear.
- Do not add any hardware or attachments not otherwise supplied by the manufacturer.

THE WARNINGS AND PRACTICES SET FORTH ABOVE REPRESENT SOME COMMON RISKS ENCOUNTERED BY USERS AND DOES NOT PURPORT TO COVER ALL INSTANCES OF RISK OR DANGER. PLEASE USE COMMON SENSE AND GOOD JUDGMENT.

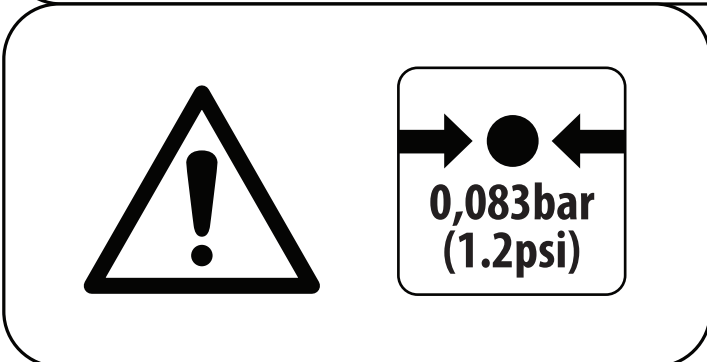
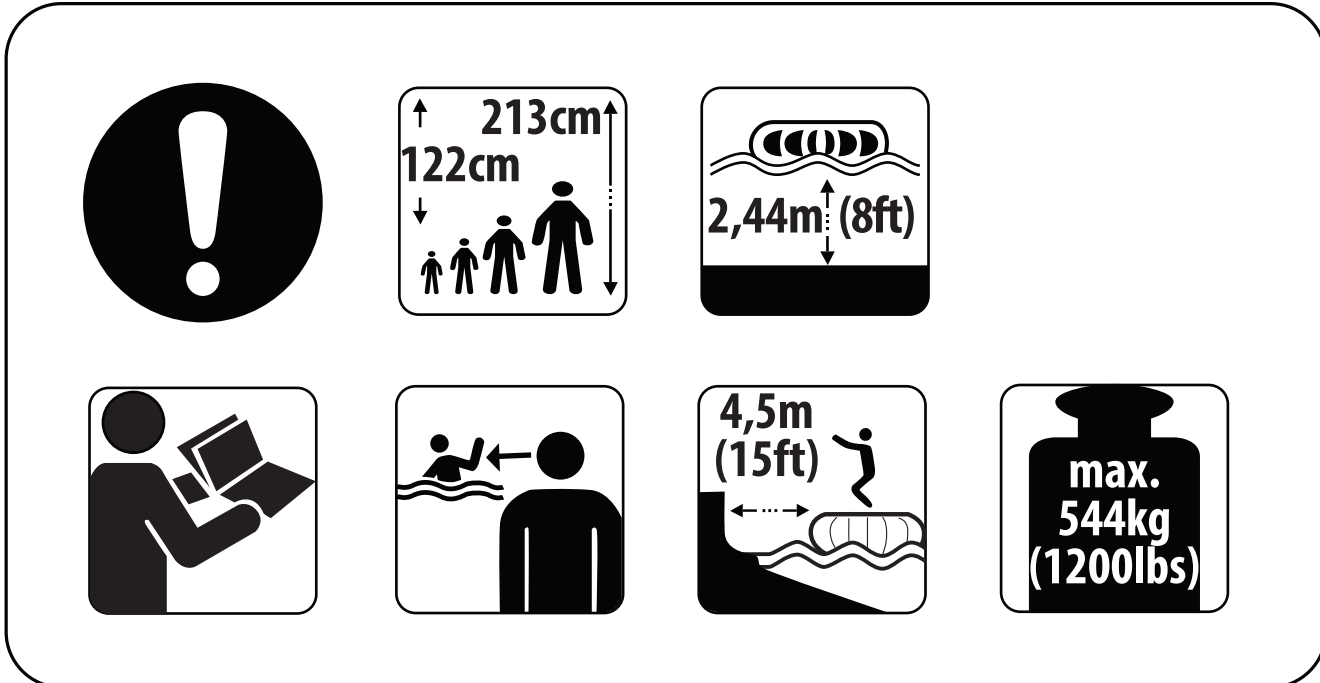
Please contact the dealer or manufacturer of this product if you have any questions about proper selection, function, or safe use of this product.

Made in China

Please Do Not Return This Product To The Store!

For questions regarding assembly, parts or warranty, contact our customer service department at 1-509-493-4938 or access product information at www.aquaglide.net.

- Do not use in water where there are sharks or other animals that could pose a threat to humans.
- If product is used indoors, always ensure adequate ceiling height overhead.
- Always remove personal items such as rings, watches or other sharp objects before use.



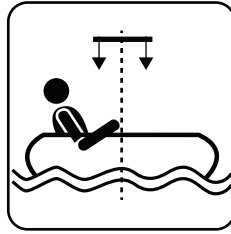
NORTH SPORTS, INC.
WHITE SALMON, WA - U.S.A.
STANDARDS: EN 15649: 2012, W.A.S.
PRODUCT: REBOUND 20
MADE IN P.R.C.
DESIGNED IN U.S.A.



No protection against drowning!
Keine Schutz gegen Ertrinken!
Pas de protection contre la noyada!
No protege contra el ahogamiento!
Nessuna protezione contro l'affogamento!
Beschermt niet tegen verdrinken!



Only for swimmers!
Nur für schwimmer!
Seulement pour les nageurs!
Sólo para nadadores!
Solo per i nuotatori!
Alleen voor zwemmers!



Warning icon: exclamation mark in a circle.

Icon: person jumping into water.


Icon: two people, each with the number 3 below them.

Warning icon: exclamation mark in a circle.

Icon: person lying on a life preserver.

Icon: two people, each with the number 7 below them.

⚠ WARNING

 Prolonged exposure to salt water can damage and/or shorten the expected lifetime of this product. The marine environment includes many damaging elements including corrosion, abrasion and damage from marine life such as barnacles. Regular cleaning and rinsing with fresh water can reduce these risks. A PVC-safe antifouling paint should be used to help protect this product against marine growth. **DAMAGE CAUSED BY EXPOSURE TO SALT WATER IS NOT COVERED BY WARRANTY.**

L: 599 cm (236")
W: 599 cm (236")
H: 98 cm (38")

Rebound 20



North Sports, Inc.
#1 North Shore Dr SE
White Salmon, WA 98672
USA

Compliant with
DIN EN-15649: 2012

Your equipment :

- Check all equipment prior to use. Inspect your Rebound™ for missing, defective or worn parts. Never use the product if excessive wear or damage are detected.
- Always check for proper inflation before each use. Temperature and environmental changes can cause changes in tube pressure. Using the product over or under inflated is dangerous and can cause damage to the product, voiding the warranty.
- Always check security of the anchor and all attachments before each use.
- Always wear a floatation vest (PFD) as required by the authorities in the area of use.

THE WARNINGS AND PRACTICES SET FORTH ABOVE IN THE WATERSPORTS SAFETY CODE REPRESENT SOME COMMON RISKS ENCOUNTERED BY USERS. THE CODE DOES NOT PURPORT TO COVER ALL INSTANCES OF RISK OR DANGER. PLEASE USE COMMON SENSE AND GOOD JUDGMENT.

Please contact us if you have any questions on the proper selection, function, or safe use of this product.

Assembly

- 1) Locate a flat, dry area with access to electrical outlet or extension cord.
- 2) Unroll and place the Rebound™ Bouncer on the ground and locate the valve as shown in Fig.1. Remove valve cover and push valve plunger in. Twist the valve stem 90 degrees to open or close the 1-Way valve feature.
- 3) Using a high output inflator/deflator place the inflation hose with proper adaptor into the valve. **Inflate to 1.2 psi (0,083 bar)** where tube is firm and tight. Check for proper air pressure using a manometer. Inflation times can vary by inflator, but the tube should be firm and tight when completely inflated. In hot weather, be sure to leave room for air expansion. **DO NOT OVER-FILL.** Close the valve and secure valve cap.

Warning: Do not use an air compressor to inflate tube. Air compressors are designed for high pressure inflation and can cause tube to burst if over-inflated. The inflator/deflator described above cannot over-inflate the tube.

- 4) Roll out your Swimstep™ access platform and connect it to the Rebound™ BEFORE INFLATING the platform using the attached Interloc™ straps. The access platform connects on the side of the bouncer where the warnings are located. Find the 2 rings on the tube, near the water line. Use (2) Interloc™ straps to connect the access platform to the tube as shown in Fig.2. Secure the straps according to the following Interloc™ instructions shown in Figure 3a- 3e. Once the straps are connected, then **inflate the boarding platform to 0.8 psi (0,055 bar)** until it is firm. Check for proper air pressure using a manometer. This will tighten the platform to the side of the Rebound™. Be careful not to over-inflate the access platform.
- 5) Congratulations! You are now ready to place your Rebound™ in the water. NOTE: If you have purchased a Complete Rebound™ Aquapark Set, please proceed to the Aquapark section for further assembly details. To launch your Rebound™ bouncer, make sure to have at least 3-4 people evenly spaced around the bouncer to help carry the Rebound™ using the provided transport handles.

NEVER DRAG YOUR REBOUND™! YOU MUST LIFT AND SET TO AVOID ANY ACCIDENTAL TEARING ON SHARP OBJECTS

Aquapark

If you have purchased a Complete Rebound™ Aquapark Set, please see the following instructions to complete assembly. If not, please proceed to the Anchoring section.

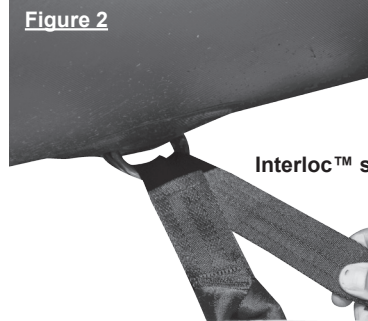
- 1) Roll out your i-Log™ and connect it to the Rebound™ BEFORE INFLATING the i-Log™ using the attached Interloc™ straps. The i-Log™ connects on the side of the bouncer 45 degrees clockwise from the access platform (viewed from above). Find 2 D-rings on the tube approximately 14" above the water line. Take the (2) Interloc™ straps and connect the i-Log™ to the Rebound™ tube according to the Interloc™ instructions shown below. Once the straps are connected, then **inflate the i-Log™ to 1.0 psi (0,069 bar)** until it is firm. Check for proper air pressure using a manometer. This will tighten the i-Log™ to the side of the Rebound™. Be careful not to over inflate the i-Log™.

- 2) Unroll and place the Slide on the ground next to the Rebound™ and **inflate to 0.8 psi (0,055 bar)** until it is firm. Check for proper air pressure using a manometer. Inflation times can vary by inflator, but the slide should be firm and tight when completely inflated. In hot weather, be sure to leave room for air expansion, or let air out if it becomes too hot. **DO NOT OVER-FILL.**
- 3) Attach the Slide to the Rebound™ using the 4 Interloc™ straps as shown in the instructions to the right.
- 4) Congratulations! You are now ready to place your Rebound™ Aquapark in the water. To launch your Rebound™ Aquapark Set make sure to have at least 3-4 people evenly spaced around the Aquapark to help carry it. Use the molded transport handles. Be sure to support the end of the i-Log during transport.

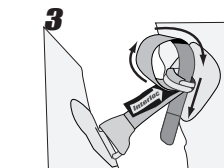
*When connecting multiple items, use only Aquaglide Interloc™ straps and connecting rings according to the Interloc™ strap instructions provided. Make sure that the connection is tight and that there is NO GAP greater than 25mm (~3/4") between items. **IMPORTANT: Failure to connect these items properly may result in injury or death.**



Figure 1



Interloc™ Strap Assembly Instructions



Interloc™ Strap Assembly Instructions

Interloc™ straps should already be attached to the boarding platform.

1) Thread the end of the Interloc™ strap through the two D-Rings on the Rebound™, then back through a single ring (1).

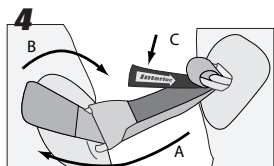
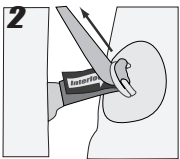
2) Pull all the webbing through the rings until the white arrow of the Interloc™ logo stops at the D-ring below. Cinch until it is tight (2).



Figure 1a



Instructions



3) Pass the end of the webbing back through the open area of the two D-Rings on top as shown (3).

4) Now bring the webbing through the opening in the single D-Ring on the platform as shown (4a).

5) Fold the strap over onto the velcro (4b), and place the other velcro tab in place to lock the strap (4c).

NEVER DRAG YOUR REBOUND™ SET! YOU MUST LIFT AND SET TO AVOID ANY ACCIDENTAL TEARING ON SHARP OBJECTS.

Anchoring

NOTE: Take a moment to locate the anchoring rings underneath your Rebound™ Bouncer. The Rebound™ 12 has 2 anchor rings on the underside of the tube. Attach anchor line to at least 1 ring. We suggest using 2 rings with a 2-way bridle (not included) for long term mooring.

The Rebound™ 16 & 20 each have 4 reinforced anchor rings evenly spaced around the underside of the tube. The Rebound™ 16 & 20 each come with a 4-Way Mooring Bridle and stainless swivel, attached. Connect anchor chain to the lower portion of the stainless swivel.

IMPORTANT: Proper anchoring is essential to the safety and performance of your product. Due to the wide variety of conditions, we advise using a professional skilled in mooring and anchoring, and experienced with local conditions. If improperly anchored, the product can move and/or float away. Aquaglide, Inc. is not responsible for any damage, injuries or losses due to improper anchoring.

Here are some general guidelines for anchoring your product. These guidelines are not intended to replace the need for professional installation.

- 1) Choose a location for your Rebound™ bouncer and/or aquapark. Place the product in at least 8 ft. of water depth and in an area protected from the wind and boat traffic. Review relevant rules and restrictions with your local authorities.
- 2) Carefully check area under the bouncer and/or aquapark for sharp or dangerous objects (i.e. rocks or stumps).
- 3) Keep a safe distance from docks, boats, boat lifts, and any other structures. DO NOT tie the product to a dock!
- 4) Anchors and anchor line are sold separately. We recommend at least 150 lbs. of weight for the 12' Rebound™ and 250 lbs. of weight for the 16' Rebound™. Ground screws or heavier anchors (300 lbs. or more) should be used for Rebound 20' or smaller Rebounds™ when on large or windy bodies of water.
- 5) Attach anchor line securely to the anchor. Use a buoy tied to the other end of the rope to easily locate your anchor.

- 6) When the product is in place, remove the buoy and tie or shackle the anchor line to the anchor rings underneath the product. Allow AT LEAST several feet of slack in the line before securing the line. This will allow the product to move in wind or waves without displacing your anchor.
- 7) If strong winds or storms are expected, it is best to remove the product from the water and deflate it. You can also move it closer to shore and secure it with lines.

Operation

- 1) This item is a water bouncer. Users bounce near the center of the item. This item must be used with at least one Aquaglide® Platinum boarding platform.
- 2) When connecting multiple items, use only Aquaglide® Interloc™ straps and connecting rings according to the Interloc™ Strap instructions provided. Make sure that the connection is tight and that there is NO GAP greater than 25mm (~3/4") between items. **IMPORTANT: Failure to connect these items properly may result in injury or death.**

Care and Maintenance

- 1) While your product has been initially treated with UV protectant, long-term exposure to sunlight will damage the product. Regularly apply a UV protectant to the exposed surface of the tube to ensure the life of your product. We recommend using ONLY INDIKON POLY GUARD UV for this purpose. Seasonal application while the product is in use is recommended. NOT DOING SO OVER LONG TERM WILL VOID THE WARRANTY. POLY GUARD UV is available at most watersports dealers, or online at <http://www.aquaglide.com/product-category/accessories/maintenance/>.
- 2) WARNING: Certain products, especially petroleum-based solvents, cleaners and protectants such as ArmorAll can damage the product and use of these products will void the warranty.
- 3) WARNING: Use of a high-pressure washer will damage the product and void the warranty. To clean, use a soft bristle brush with mild soap and fresh water. INDIKON MAXI CLEAN PVC can be used to thoroughly clean the product before storage.
- 4) Check the inflation of your tube often. Check for proper air pressure using a manometer. It may appear to have lost air early in the morning, but will expand once the sun warms it. Maximum expansion will occur in the heat of the day. Under-inflation can cause excessive wear. Proper inflation is important as this will discourage marine animals from chewing and prevent damage from wear.

Storage

- 1) Before storing, place the product on a clean, level area. Clean with mild soap and water and allow to dry completely. Apply POLY GUARD UV to the surface of all tubes before deflating.
- 2) Remove all attachments and store in a sealed water-proof container (i.e. a plastic covered box or bin).
- 3) Remove ALL of the air from the tube using the deflation end of the high output inflator/deflator.
- 4) Fold the deflated tube in thirds then flat-fold or roll loosely.
- 5) Store the product out of direct sunlight and protected from the environment in a clean, dry location. It is best to store inside a container with moth balls to prevent damage from rodents. NEVER store uncovered, in a damp location, or on concrete surface! NEVER store at temperatures below 40 degrees F.

WORK SPACE AND TOOLS

1. Take care to position yourself in a clean, dry area with good ventilation. For proper curing of adhesives, temperature should remain above 10°C (50 F). In most cases you will need enough room to inflate the product.
2. **Repair Kit Contents:** PVC Patch material, PVC Glue, Instructions.
3. **Additional items that MAY be needed:** Air pump, sharp scissors and/ or razor knife, dish washing liquid, water, small bowl or spray bottle, 120 Grit sandpaper, solvent such as MEK (Methyl Ethyl Ketone) or rubbing alcohol, china marker, small 'chip' brush or disposable paint brush, clean dry cloth.

LOCATE LEAK(S)

1. If there is a problem with air leaks, you will need to locate the leak(s) first.
2. Inflate your Aquaglide® Platinum™ product fully. Some small leaks can close themselves at lower air pressures, so it is best to maintain full pressure by re-inflating periodically while checking for leaks.
3. Use a soapy water solution (50%/ 50% dish soap & water) and a cloth to check for leaks. Work slowly around the product spraying or swabbing-on soapy water solution. Look for growing bubbles, which indicate a leak.
4. Once a leak is confirmed, dry the area well, mark it and prepare to patch.

PATCHING

Reinforced PVC Patch with high-grade adhesive.

**** IMPORTANT: leaks must be patched with the item completely deflated, and patches must be allowed to cure for 24 hours.**

1. DEFLATE your Aquaglide® Platinum™ product completely.
2. Carefully cut PVC patch material to size using sharp scissors or razor knife.
 - a. Patch should be least 3 - 5cm (1-2") larger than hole IN ALL DIRECTIONS around any air leak. This means a minimum patch size of 5cm x 5cm (2" x 2") for a pinhole leak. The larger the patch, the better.
 - b. Square patches with rounded corners are usually best, as this reduces the risk of peeling.
3. Dry-fit the patch over the area to be repaired to ensure good fit and coverage.
4. Use a clean 120 grit sand paper to rough up the surface to be patched AND ALSO the back of the patch material.

5. Use solvent (MEK or Rubbing Alcohol) and a fresh cloth to clean the sanded areas, removing all debris.
6. Dry-fit the patch again and use china marker (provided) to carefully outline where the patch will be located.
7. Next, use the glue (provided). Use a disposable 'chip' brush to spread glue if needed. Try to work neatly and quickly.
 - a. Using disposable brush, apply a thin, even layer of glue to the repair area making sure to cover the area completely. Stay INSIDE the china marker outline.
 - b. Using disposable brush, apply a thin, even layer of glue to the to the back of the patch making sure to cover the area completely.
 - c. Allow glue to cure for approximately 60 seconds.
 - d. Starting at one corner, carefully align the patch over the repair area using the china marker outline as a guide. Once the two surfaces touch, the bond will be immediate, so take care.
 - e. Starting at one corner and working outward, carefully apply the patch to the repair area using very firm pressure.
 - f. Rub the entire patch area and the edges of the patch using very firm pressure.
 - g. Allow to cure for at least 24 hours before inflating.



NOTICE! - Release of Liability, Claim Waiver, and Assumption of Risk Agreement

By opening and assembling this product, you are agreeing (1) to be bound to the terms set forth below and (2) to require anyone using this product to be bound by such terms. If you are unwilling to be bound by these terms, return this product (before use) for a full refund.

ASSUMPTION OF RISK: Use of this product and any of its components involves certain inherent risks, dangers, and hazards which can result in serious personal injury and death. In using the product, you freely agree to assume and accept any and all known and unknown risks of injury while using this equipment. The risks inherent in the sport can be greatly reduced by abiding by the Warning Guidelines listed in this Owner's Manual and by using common sense.

RELEASE AND WAIVER OF CLAIMS AGREEMENT: In consideration of the sale of the product to you, you hereby agree to the fullest extent permitted by law as follows:

TO WAIVE ANY AND ALL CLAIMS that you have or may in the future have against North Sports, Inc., its distributors and dealers, resulting from use of this product and any of its components.

TO RELEASE North Sports, Inc. from any and all liability for any loss, damage, injury, or expense that you or any users of this product may suffer, or that your next of kin may suffer, as a result of the use of this product, due to any cause whatsoever, including negligence or breach of contract on the part of North Sports, Inc. in the design or manufacture of this product and any of its components.

ARBITRATION: In further consideration of the sale to you of this product and any of its components, you hereby agree to submit to binding arbitration any and all claims which you believe you may have against North Sports, Inc. arising from the use of any North Sports Inc. and Aquaglide® equipment or products. The arbitration shall be pursuant to the rules of the American Arbitration Association. Arbitration shall be commenced within (1) year from the date on which any alleged claim first arose. Further, the arbitration shall be held in White Salmon, Washington unless otherwise mutually agreed to by all parties. The submission to the American Arbitration Association shall be unlimited and the arbitration award may be enforced by any Court of competent jurisdiction.

BINDING EFFECT OF AGREEMENT: In the event of your death or incapacity, this Agreement shall be effective and binding upon your heirs, next of kin, executors, administrators, assigns, and representatives.

ENTIRE AGREEMENT: In entering into this Agreement, you are not relying upon any oral or written representations other than what is set forth in this agreement and the North Sports Inc. and Aquaglide® Owner's Manual.

Warranty

North Sports, Inc. warrants products to be free of defects in material or workmanship to the original purchaser for a period of Three (3) years from date of purchase. This warranty is subject to the following limitations:

- 1.** Warranty is valid only with dated proof of purchase in the form of the original invoice.
- 2.** Warranty is valid only when the product is used for normal recreational activities, and does not cover use in schools or rental operations. Warranty term for commercial use is 1 year.
- 3.** Aquaglide® will make the final warranty determination which may require inspection and/or photos of the product which clearly show defect(s). We require the above be sent to another location of our choice, freight prepaid, or by email to support@aquaglide.com
- 4.** If a product is deemed to be defective by Aquaglide®, the warranty covers the repair or replacement of the defective product only. Aquaglide® will not be responsible for any costs, losses, or damages incurred as a result of loss of use of product.
- 5.** This warranty does not cover damage caused

by misuse, abuse, neglect, or normal wear and tear, including, but not limited to, punctures, dragging the product over the ground, damage due to excessive sun exposure or seam failure due to overinflation in the sun, damage caused by improper handling and storage, damage caused by use in waves or shore break, and damage caused by anything other than defects in materials and workmanship.

6. This warranty is voided if any unauthorized repair, change, or modification has been made to any part of the equipment. Authorization for such must come in writing from Aquaglide®.

7. The warranty for any repaired or replacement equipment is good from the date of the original purchase only.

8. Any warranty claims must be accompanied by the original purchase receipt. The name of the retailer and date of purchase must be clear and legible.

9. There are no warranties which extend beyond the warranty specified here.

Returns and Service Policy

Product can be returned only if a return authori-

zation number (RA) is given by Aquaglide® in advance. The RA number must be on the outside of the package or it will not be accepted at our warehouse. Freight on the returned product must be prepaid or it will not be accepted. Upon receipt, Aquaglide® will make a determination within (30) days. If the product is covered under warranty it will be returned to the customer at the expense of North Sports, Inc. after repairs can be made. If not, the customer will receive a quote for repair and/ or replacement as well as any necessary cleaning and shipping charges. The customer will have 30 days to accept the quotation. At the end of 30 days, or upon refusal of the quote, Aquaglide® will return the product in the condition in which it was received at the customer's expense. The customer agrees to authorize North Sports, Inc. to charge the customer's credit card for any costs not covered under the terms and conditions of the Aquaglide® Warranty.

Serial Number

All Aquaglide® Platinum products are marked with a serial number near the main inflation valve (#1). The serial number may be stamped into the PVC directly around the valve, or it may be visible on a welded plate near the valve. Please include this number when you contact Aquaglide, or your dealer, with any warranty claim.