



---

**ADT Pulse® Interactive Solutions**  
**NV412A-ADT**  
**Video Encoder**  
**Installation Guide**

---

# Table of Contents

<b>INTRODUCTION</b> .....	<b>1</b>
Overview .....	1
NV4 12A-ADT Features.....	1
Package Contents .....	1
Physical Details – NV4 12A-ADT .....	2
Front Panel .....	2
Rear Panel.....	3
<b>INSTALLATION</b> .....	<b>4</b>
Configuring the NV4 12A-ADT .....	4
Adding the NV4 12A-ADT to your ADT Pulse Wireless Network.....	4
Wall Mounting (Optional) .....	8
<b>APPENDIX A: SPECIFICATIONS</b> .....	<b>9</b>
<b>APPENDIX B: REGULATORY APPROVALS</b> .....	<b>10</b>
FCC Statement.....	10
CE Approvals .....	10

**UNITED STATES LICENSE INFORMATION:** **AL** Alabama Electronic Security Board of Licensure, 7956 Vaughn Rd., Montgomery 36116, (334) 264-9388; **AK** 37950, 5520 Lake Otis Pkwy., Anchorage, AK 99507; **AR** E12-041, Regulated by Arkansas Bd. of Private Investigators & Private Security Agencies, #1 State Police Plaza Dr., Little Rock, AR 72209, (501) 618-8600; **AZ** ROC 279591; **CA** ACO7155, alarm company operators are licensed and regulated by the Bureau of Security & Investigative Services, Dept. of Consumer Affairs, Sacramento, CA 95814, 974443, PPO17232; **CT** ELC.0106069-L5; **DC** ECS902743; **FL** EF0001121; **GA** LVA205265, -205326, -205572, -205679, -205878, LVU405673, -004349; **HI** CT-32297; **ID** ELE-SC-2643; **IL** 124001792; **LA** F1639, F1640, F1643, F1654, F1655; **MA** 172C; **MI** 3601206258, 5103208 - 4182 Pier North Dr. Ste. D, Flint, **MI** 48504; **MN** TS650251; **NC** 7535P2, 7561P2, 7562P10, 7563P7, 7565P1, 7566P9 - Alarm Systems Licensing Bd., 4901 Glenwood Ave, Ste. 200, Raleigh, 27612 (919) 788-5320; **NM** 374838; **NV** 0077105; **NJ** Electrical Contractor Lic. #'s 34FA00140500, 34BA00179000, 7895 Browning Rd., Pennsauken, NJ 08109; **NY** 1200305615, Licensed by NYS Dept. of State; **OH** 50-18-0018, 50-25-0023, 50-29-0003, 50-31-0014, 50-48-0008, 50-50-0005, 50-76-0006, 50-89-0016, 53-89-1726; **OK** 1995; **OR** 196560; **PA** Pennsylvania Home Improvement Contractor Registration Number: PA090797; **RI** 35683; **TN** ACC-1688, -1689, -1690, -1691, -1692, -1693, -1694, -1695, -1696; **TX** B17944 - 140 Heimer Rd. Ste. 100, San Antonio, **TX** 78232 - Texas Private Security Bureau, 5805 N. Lamar Blvd., Austin 78752; **UT** 8289653; **VA** 11-7345, 11-7348, 11-7351, 11-7354, 11-7598, 11-7900, 11-8205, 11-8353, 11-8447 2705147728 Class B Contractor Classification ESC; **WA** ADTLLL881DO, 11824 N Creek Pkwy #105, Bothell, WA 98011; **WI** 1210943; **WV** 049758.

## MS 15019511

©2013 ADT LLC dba ADT Security Services. All rights reserved. ADT, the ADT logo, 800 ADT.ASAP and the product/service names listed in this document are marks and/or registered marks. Unauthorized use is strictly prohibited.

**Canada Licence number:** RBQ 3019-4070-50.©2013 ADT Security Services Canada, Inc. All rights reserved. ADT, the ADT logo, 800.ADT.ASAP and the product/service names listed in this document are marks and/or registered marks. Unauthorized use is strictly prohibited.

# Introduction

*This installation guide provides simple, step-by-step instructions for configuring and installing your NV412A-ADT Video Encoder on your ADT Pulse® wireless system.*

## Overview

The NV412A-ADT (hereafter referred to as the *video encoder*) digitizes video signals and streams digital images directly to the ADT Pulse wireless system.

## NV412A-ADT Features

- Easily installs to the ADT Pulse wireless system
- MPEG4 and JPEG encoders built into the video encoder generate a ready-to-view video stream
- Supports TCP/IP networking

## Package Contents

1. NV412A-ADT Video Encoder
2. 12V Power Adapter
3. Video Output Terminator
4. Two Mounting Brackets
5. Four Mounting Screws
6. Installation Guide

## Physical Details – NV412A-ADT

### Front Panel



Figure 1: Front Panel

<b>Video Out</b>	To ensure the best quality video, attach a coaxial terminator to the <b>Video Out</b> connector.
<b>Video In</b>	Supports a single composite video source.
<b>Line Out / Line/Mic In</b>	<b>Not Used</b>

#### IMPORTANT



**THE LINE OUT AND LINE/MIC IN INPUTS ARE NOT SUPPORTED BY ADT PULSE.**

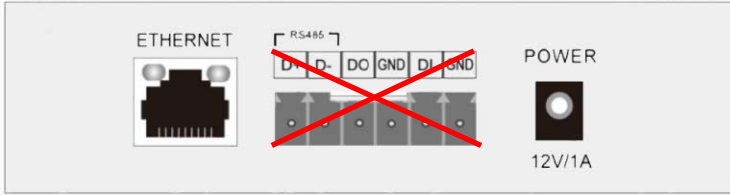
<b>Network LED (green)</b>	<p><b>On</b> – Ethernet connection is detected</p> <p><b>Off</b> – Ethernet connection is not detected</p> <p><b>Blinking</b> – Data is being transmitted or received via the Ethernet connection</p>
<b>Active LED (green)</b>	<p><b>Off</b> – No user is viewing the <i>video encoder</i></p> <p><b>Blinking</b> – User is viewing the <i>video encoder</i></p>
<b>Power LED (green)</b>	<p><b>On</b> – Power on</p> <p><b>Off</b> – No power</p> <p><b>Blinking</b> – Ready mode</p>
<b>Reset</b>	The device can be reset when the <i>video encoder</i> is in the ready mode. Using a pin or paper clip, press and hold the reset button for at least 10 seconds. The communication configuration settings of the <i>video encoder</i> reset to the manufacturer’s default settings.

#### IMPORTANT



**The Reset button changes the communication configuration settings and should only be used under the direction of ADT support.**

## Rear Panel



**Figure 2: Rear Panel**

<b>Ethernet Port</b>	Uses a standard Ethernet cable to connect the <i>video encoder</i> to the ADT Pulse Gateway.
<b>Power Port</b>	The supplied 12VDC power adapter connects to the <i>video encoder's</i> power supply.
<b>Terminal Blocks</b>	Not Used.

### IMPORTANT



**THE TERMINAL BLOCKS ARE NOT USED WITH ADT PULSE.**

# Installation

This section provides details of installing and configuring the NV412A-ADT Video Encoder.

## Configuring the NV412A-ADT

The following instructions provide details of configuring the video encoder.

1. Connect the **Video Output** of the analog camera to the **Video In** on the video encoder, using a standard video cable with a BNC connector.
2. Connect the Video Output Terminator to the **Video Out** on the video encoder, to ensure the best video quality.

## Adding the NV412A-ADT to your ADT Pulse Wireless Network

### IMPORTANT



Only use one Video Encoder per analog camera. No more than 10 cameras (analog or wireless) can be enrolled on the ADT Pulse Gateway.

1. Open your web browser. In the address bar, type: <https://Portal.ADTPulse.com>.
2. Type your **Username** and **Password**, and then click the **Sign In** button.

**ADT Pulse**

**ADT Pulse Log in**

Username:

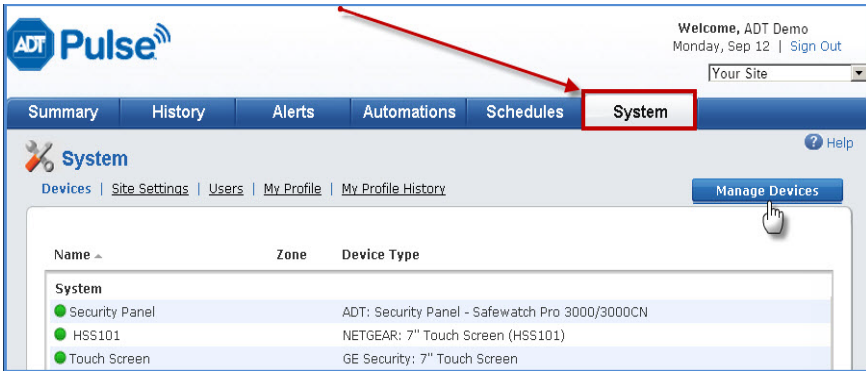
Password:

**Sign In**

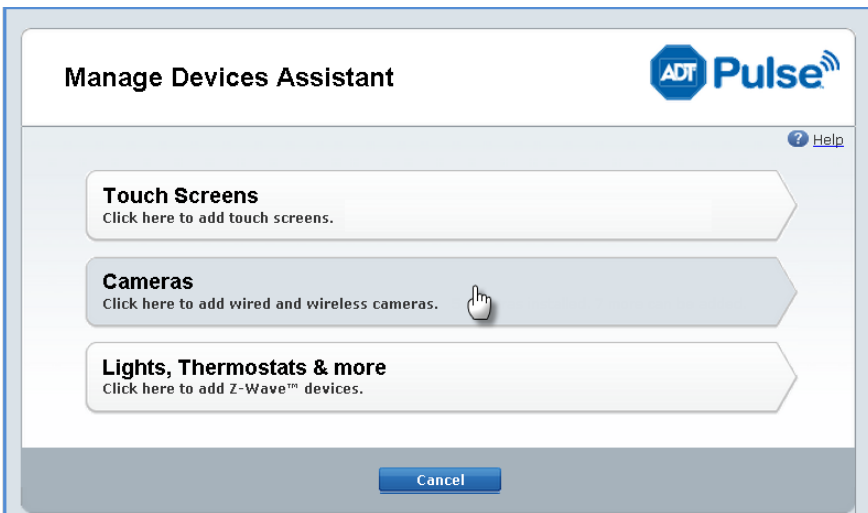
Forgot your username or password?

Your use of this site signifies that you accept the ADT Pulse Website Terms of Use Agreement. ©2010 ADT Security Services, Inc. ADT and the ADT logo are registered trademarks of ADT Services AG and are used under license. Unauthorized use of this site is prohibited and may be subject to civil and criminal prosecution.

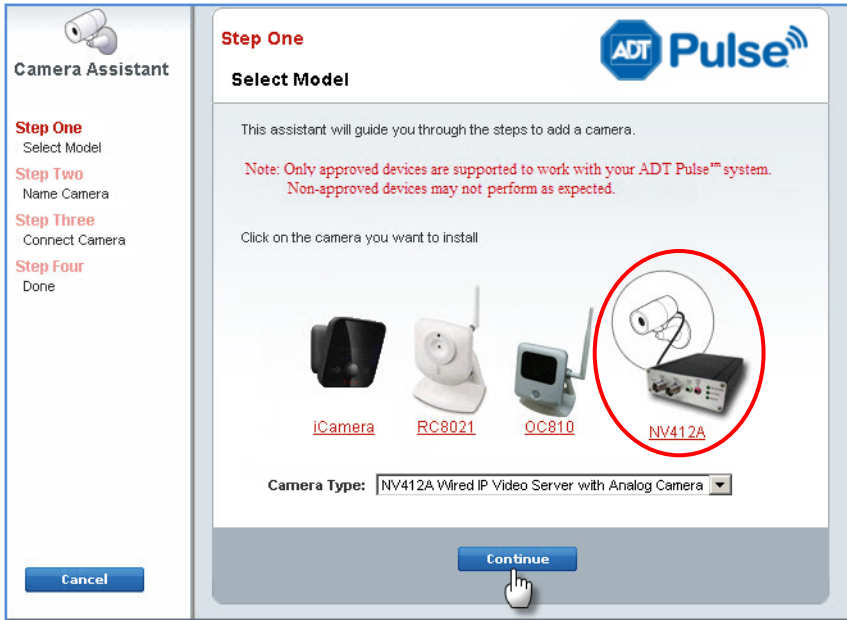
3. Click the **System** tab, and then click the **Manage Devices** button.



4. In the **Manage Devices Assistant**, click **Cameras**.




- Click the picture of the **NV412A** or select it from the drop-down list, and then click the **Continue** button.



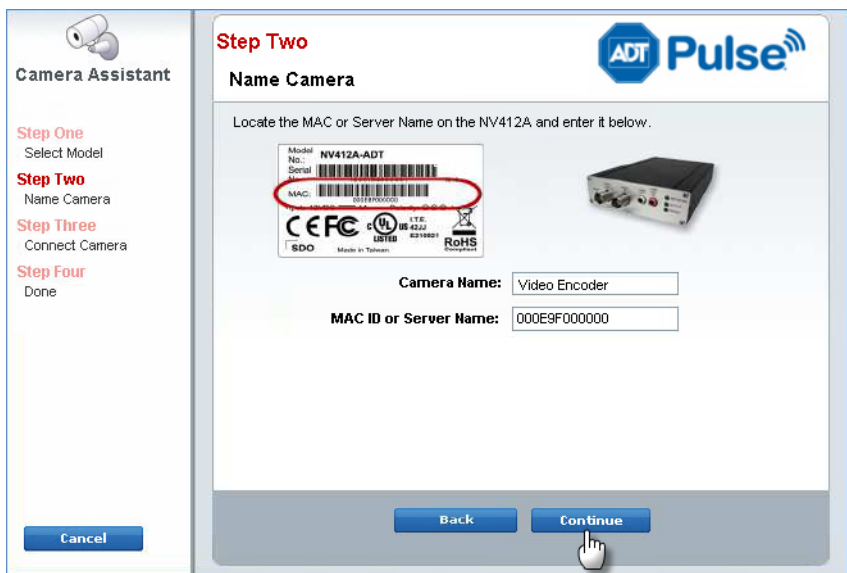
- Assign the *video encoder* a unique camera name in the space provided, and then type the *video encoder's* **MAC ID** in the space provided.

---

 **NOTE:** A valid MAC ID is 12 characters long and contains only numbers and/or the letters A-F.

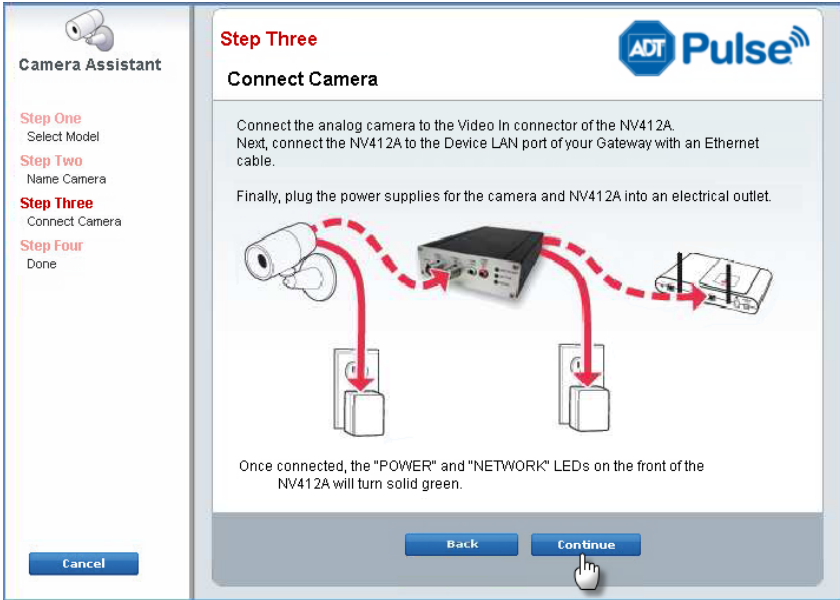
---


- Click the **Continue** button.



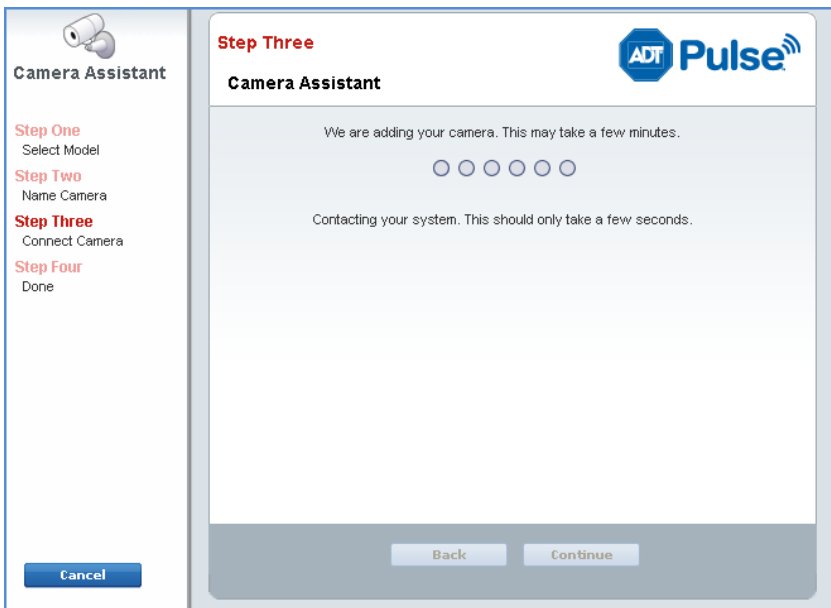


8. Connect the *video encoder* to the Device LAN port of the Gateway using the Ethernet cable.
9. Connect the power supplies for both the analog camera and the *video encoder*.
10. Click the **Continue** button.

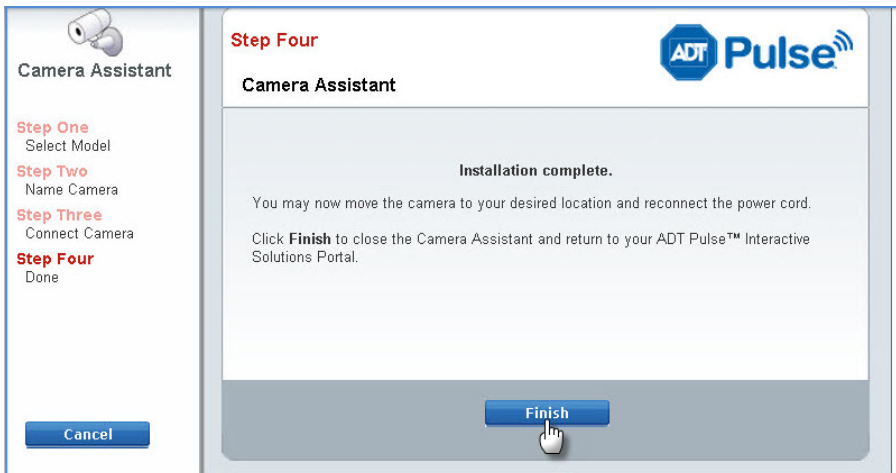


 **NOTE:** The Power LED turns on briefly, and then starts blinking for approximately 15-20seconds during startup. After startup is complete, the Power and Network LEDs on the front of the *video encoder* turn solid green.

11. Once connected, click the **Continue** button.



12. Click **Finish** after the installation is complete.



## Wall Mounting (Optional)

If desired, you can mount the NV412A-ADT to a wall or other solid surface using the enclosed mounting brackets.

1. Attach the mounting brackets to either side of the NV412A-ADT.
2. Use two screws per bracket to mount the *video encoder* to the surface.

## Appendix A: Specifications

<b>Model</b>	<b>NV412A-ADT</b>
Dimensions H x W x D	3.5" x 1.2" x 5.5" 90mm x 30mm x 140mm
Operating Temperature	32°F to 104°F (0°C to 40°C)
Storage Temperature	14°F to 140°F (-10° C to 60° C)
Video Compression	H.264, MPEG4 and MJPEG
Network Interface	1 Ethernet 10/100BaseT (RJ45)
LEDs	3
Power Adapter	External Power Adapter: 12V / 1A External PoE: 48V / 0.3A

## Appendix B: Regulatory Approvals

### FCC Statement

This equipment generates uses and can radiate radio frequency energy and, if not installed and used in accordance with the instructions, may cause harmful interference to radio communications. However, there is no guarantee that interference will not occur in a particular installation. If this equipment does cause harmful interference to radio or television reception, which can be determined by turning the equipment off and on, the user is encouraged to try to correct the interference by one of the following measures:

- Reorient or relocate the receiving antenna.
- Increase the separation between the equipment and receiver.
- Connect the equipment into an outlet on a circuit different from that to which the receiver is connected.
- Consult the dealer or an experienced radio/TV technician for help.

To assure continued compliance, any changes or modifications not expressly approved by the party responsible for compliance could void the user's authority to operate this equipment. (Example - use only shielded interface cables when connecting to computer or peripheral devices).

### FCC Radiation Exposure Statement

This equipment complies with FCC RF radiation exposure limits set forth for an uncontrolled environment. This equipment should be installed and operated with a minimum distance of 20 centimeters between the radiator and your body.

This device complies with Part 15 of the FCC Rules. Operation is subject to the following two conditions:

- (1) This device may not cause harmful interference, and
- (2) This device must accept any interference received, including interference that may cause undesired operation.

This transmitter must not be co-located or operating in conjunction with any other antenna or transmitter.

### CE Approvals

The NV412A-ADT Video Encoder and the Ethernet Video Encoder meet the guidelines of the European Union and comply with the 99/5/EEC and RTTE 99/5EG directives, including the following standards:

- EN60950
- EN300 328-2
- EN301 489-1
- EN301 489-17

This is a Class B product. In a domestic environment, this product may cause radio interference in which case the user may be required to take adequate measures.

This product is UL and cUL certified and comply with UL60950-1 Information Technology Equipment applicable requirement.