



SW6000 User Manual

ESI Web Service Simulator

User guide for Shure SW6000 Conference Management Software
Version: 9.2 (2021)

Table of Contents

1	Introduction	3		
2	Installation and settings	3		
2.1	'SW6000' PC	3		
2.1.1	System requirement	3		
2.1.1.1	Hardware	3		
2.1.1.2	Software	3		
2.1.2	Installation and configurations	3		
2.2	'Web Server' PC	4		
2.2.1	System requirement.....	4		
2.2.1.1	Hardware.....	4		
2.2.1.2	Software	4		
2.2.2	Installation and configuration	4		
3	Testing the Web Interface	8		
4	Troubleshooting.....	12		

1 Introduction

This manual describes how to setup and use the Web Service Simulator application for testing the connection to the SW6000-ESI Web Interface.

2 Installation and settings

2.1 'SW6000' PC

2.1.1 System requirement

The System requirements for a PC running the SW6000 applications are:

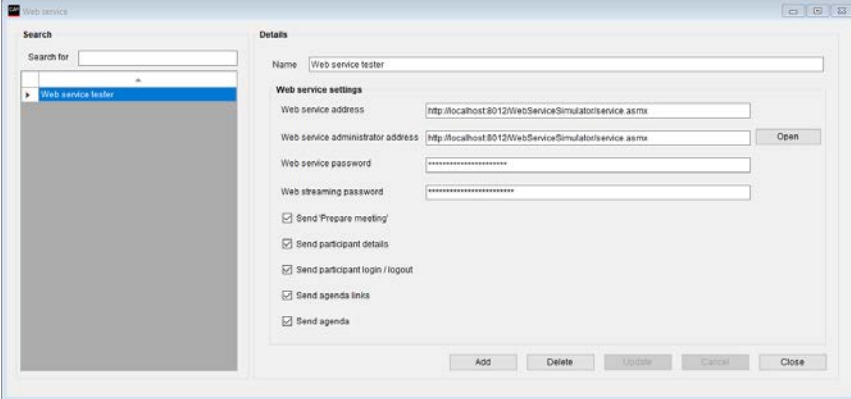
2.1.1.1 Hardware

- As specified in the 'Installation Manual SW6000'

2.1.1.2 Software

- Windows 10
- SW6000 Basic Package
- SW6000-ESI External System Interface

2.1.2 Installation and configurations

1.	Install the SW6000 application as specified in the 'SW6000 Installation Manual' and start the CAA	
2.	Click the CAA application Setup Equipment Web Service	
3.	<p>On the Web Service form, enter the following:</p> <p>Web Service Address: <code>http://[yourservername]/WebServiceSimulator/Service.asmx</code> [yourservername] = IP address or Computer_name</p> <p>Administrator Address: <code>http://[yourservername]/WebServiceSimulator/Service.asmx</code></p> <p>Web Service password: <code>WebServicePassword1234</code></p> <p>Web Streaming password: <code>WebStreamingPassword1234</code></p>	
4.	Click Update	

2.2 'Web Server' PC

2.2.1 System requirement

The System requirements for the PC running the Web Server Simulator are:

2.2.1.1 Hardware

- As specified in the 'Installation Manual SW6000'

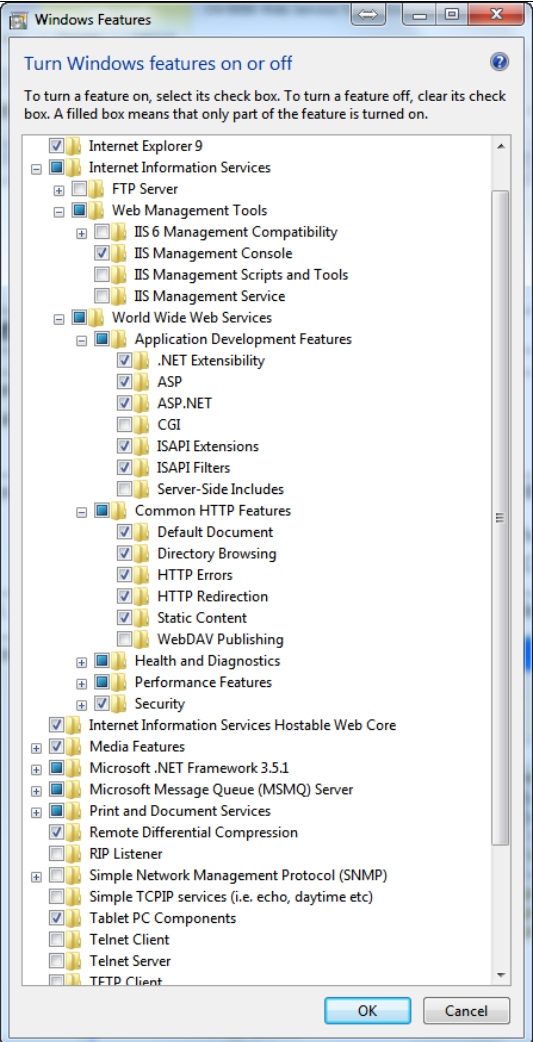
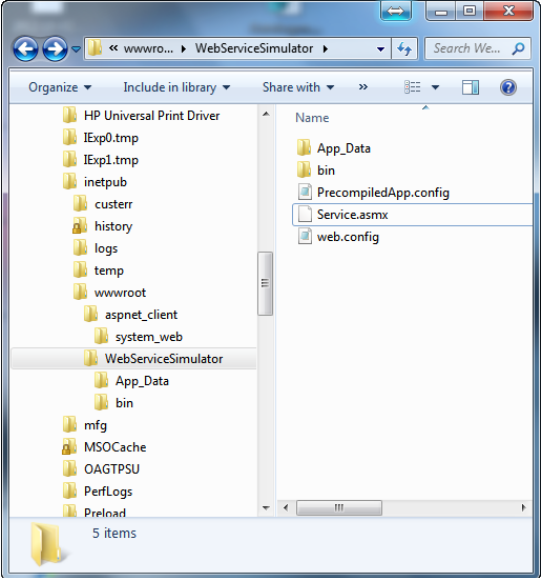
2.2.1.2 Software

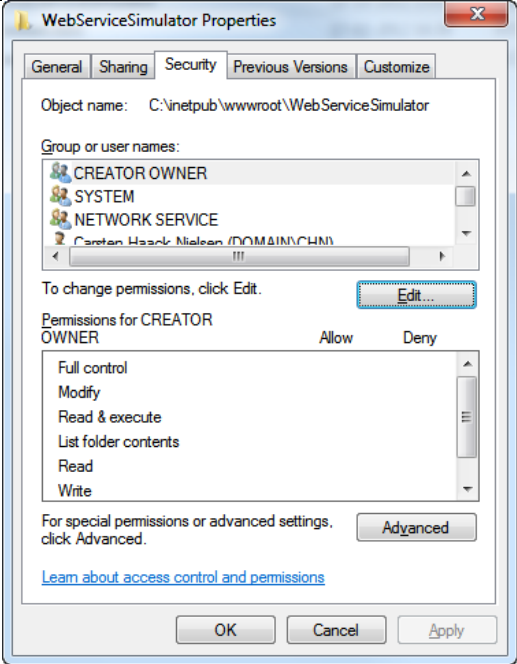
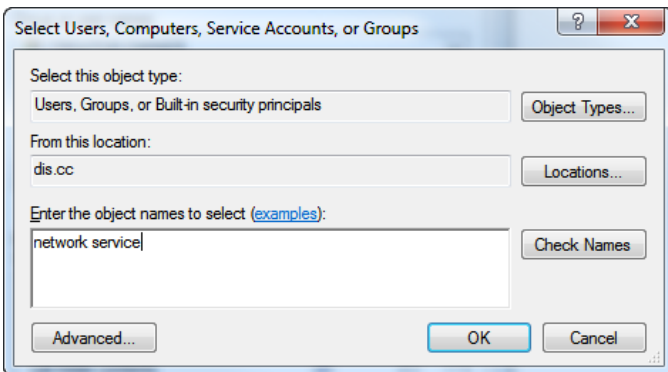
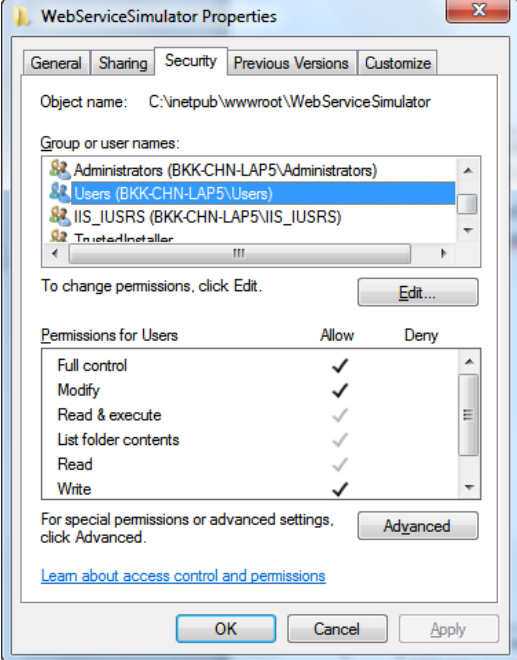
- Windows 10
- Shure SW6000 Web Service Simulator (located in the SW6000 installation package in the 'SW6000 Accessories' folder)
- IIS (Internet Information Services)
- Dot.Net Framework version 4.0

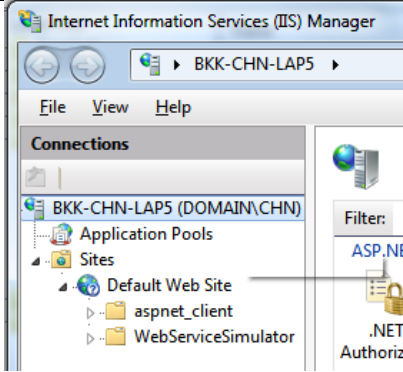
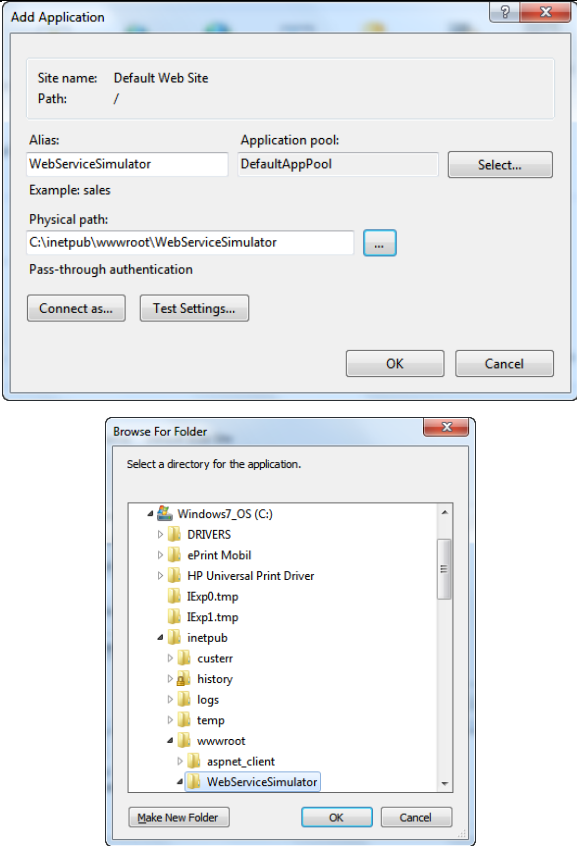
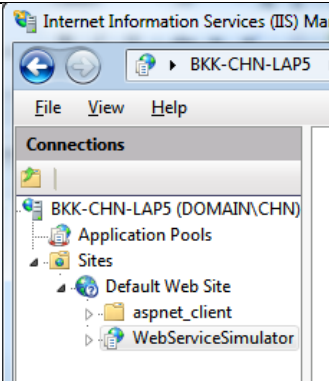
2.2.2 Installation and configuration

The Web Service Simulator can be installed on the same PC as SW6000 or on another PC.

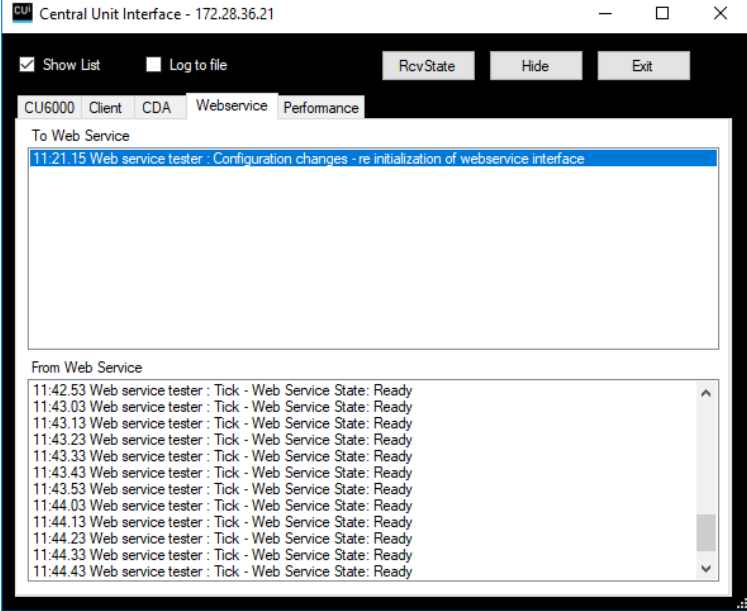
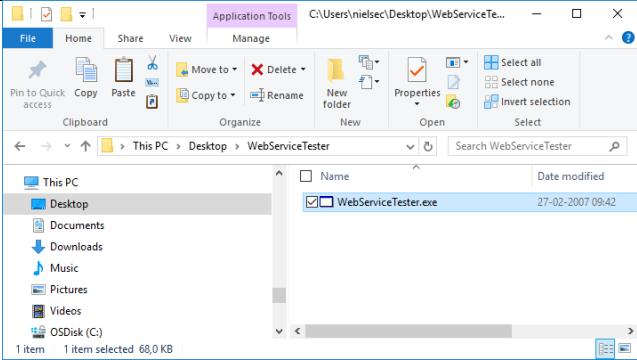
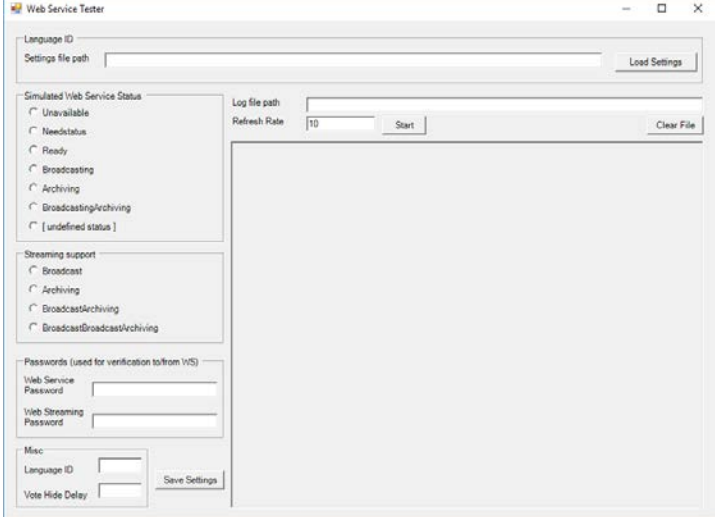
5.	Install the SW6000 application as specified in the 'SW6000 Installation Manual' and start the CAA	
6.	Install IIS (Internet Information Services)	Open Control Panel/Program Files/Turn Windows features on or off Select IIS (Internet Information Services) in the list and make sure the options shown are selected:

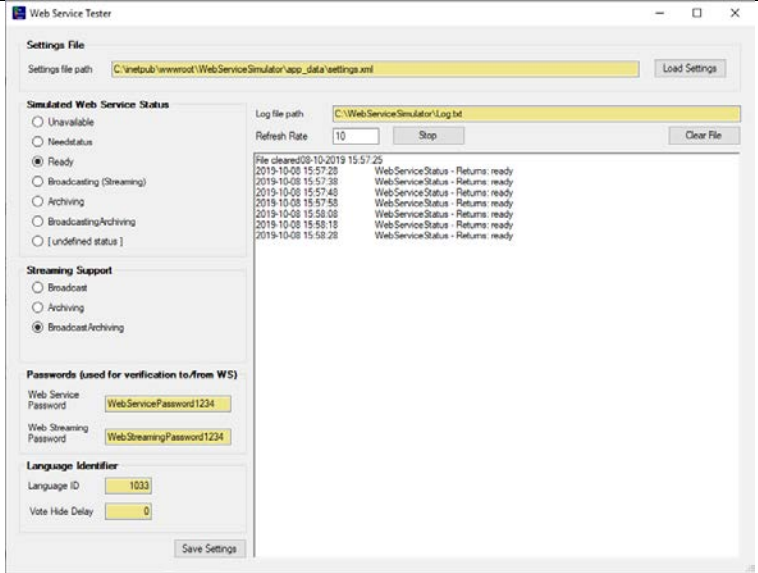
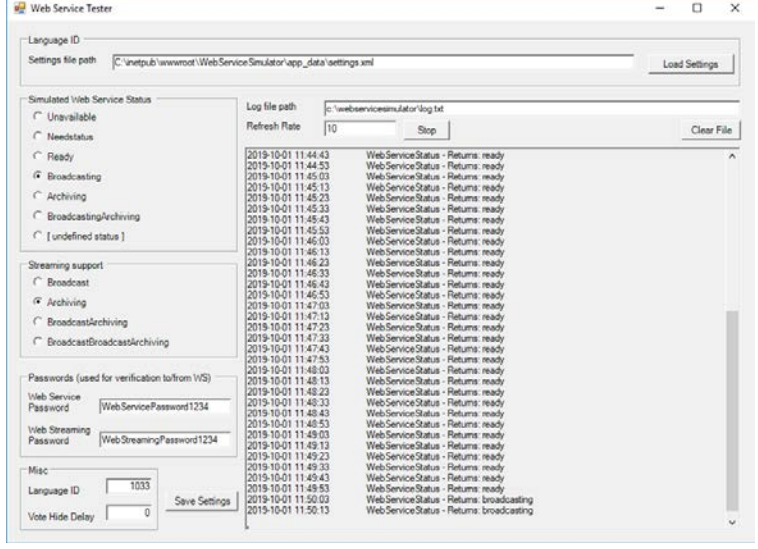
	 <p>The screenshot shows the Windows Features dialog box. It lists various features that can be turned on or off. Key features shown include Internet Explorer 9, Internet Information Services (with sub-features like FTP Server, Web Management Tools, and World Wide Web Services), Microsoft .NET Framework 3.5.1, and Microsoft Message Queue (MSMQ) Server. Most features have their checkboxes checked.</p>
<p>7. Create a folder on the server in the wwwroot directory called: <i>WebServiceSimulator</i> and copy the content of the Web Service Simulator folder from the into this folder</p>	 <p>The screenshot shows a Windows Explorer window displaying the contents of a folder named 'WebServiceSimulator'. The folder contains several sub-folders and files: 'App_Data', 'bin', 'PrecompiledApp.config', 'Service.asmx', and 'web.config'. The 'bin' folder is currently selected.</p>

<p>8.</p>	<p>Add "Network Service" in the 'Security' settings for the folder "WebServiceSimulator" by clicking 'Edit' and then 'Add'</p>	 
<p>9.</p>	<p>Give "Full Control" to "Users['servername'/Users]" in the Security Settings for the folder "WebServiceSimulator"</p>	
<p>10.</p>	<p>Control Panel\All Control Panel Items\Administrative Tools: Open 'Internet Information Services (IIS) Manager</p>	

<p>11.</p>	<p>Right click on "Default Web Site" and select "Add Application"</p>	
<p>12.</p>	<p>Type in 'Alias' and browse to the 'Physical Path' to the folder. Click OK</p>	
<p>13.</p>	<p>The 'WebServiceSimulator' application is now created Close the "Server Manager"</p>	
<p>14.</p>	<p>Open Settings Control Panel Administrative Tools Internet Information Services</p>	
<p>15.</p>	<p>Apply correct network setting to 'Web Server PC'.</p>	<p>The 'Web Server PC, must be at the same network as the PC running the SW6000 CUI Application.</p>

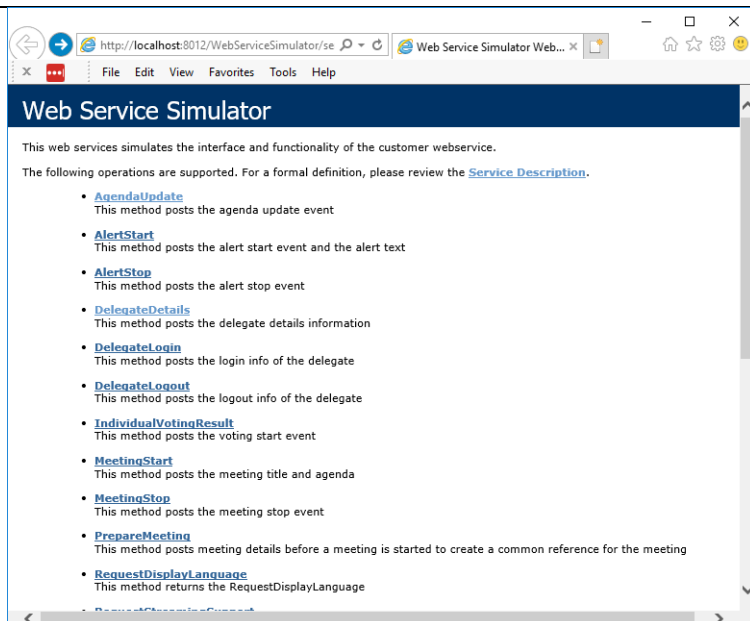
3 Testing the Web Interface

16	Start the CUI and CUA if not already running	
17	Right click the CUI icon in the left bottom corner and select 'Display'	
18	When the CUI windows is opened, tick 'Show List' and 'Webservice'	
19	Copy the 'Web Service Tester' folder to the Desktop and start the 'WebServiceTester' application	
20	<p>Insert the 'Setting file path': C:\inetpub\wwwroot\WebServiceSimulator\app_data\settings.xml</p> <p>Insert the 'Log file path': c:\webservicesimulator\log.txt</p> <p>Click 'Load settings'</p>	

<p>21</p>	<p>Change the language ID to the System language in the SW6000</p>	
<p>22</p>	<p>Click 'Save Settings'</p>	
<p>23</p>	<p>Start logging by pressing 'Start'</p>	
<p>24</p>	<p>Select the "Simulated Web Service Status" state you want to simulate. E.g. Broadcasting to simulate that web broadcasting is running. Press Save Settings on every change.</p>	
<p>25</p>	<p>The Status will be visible in the 'WebServiceTester' window and saved in the log file.</p>	

<p>26 And the status will also be visible in the CUI window.</p>	
<p>27 Streaming buttons in the CUA will reflect the status setup in this window</p>	
<p>28 The 'Output' folder is automatic created when the service is started and contains the XML files send from SW6000 Web Service</p>	
<p>29 View the events in the Output folder</p>	

30 For more information click in the CAA|Setup|Equipment|Web Service|Open to open the Web Service Simulator for a list supported operations



4 Troubleshooting

In this chapter a simple fault-finding guide is given.

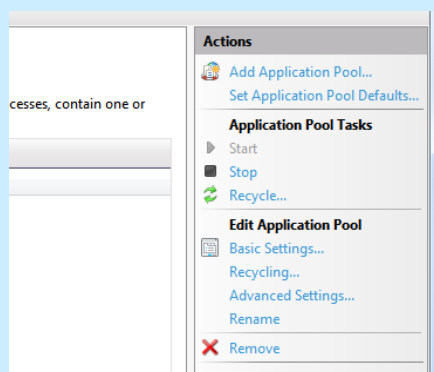
This is intended to be used to remedy the consequences of incorrect installation. If more serious faults or problems arise the installer should contact a qualified technician.

1 The page 'CAA|Setup|Equipment|Web Service|Open is opened with an error message

- Check the filled-in information in 'CAA|Setup|Web Service'
- Repair dotNet4.0 in 'Control Panel|Programs and Features|Microsoft.Net Framework 4 Extended'
- Check that dot.net 4.0 is enabled:



If v2.0 is shown, select the line and click 'Basic Settings' and change to v4.0



**United States, Canada, Latin
America, Caribbean:**

Shure Incorporated
5800 West Touhy Avenue
Niles, IL 60714-4608
USA

Phone: +1 847 600 2000
Fax: +1 847 600 1212 (USA)
Fax: +1 847 600 6446
Email: info@shure.com

Europe, Middle East, Africa:

Shure Europe GmbH
Jakob-Dieffenbacher-Str. 12
75031 Eppingen
Germany

Phone: +49 (0) 7262-9249-100
Fax: +49 (0) 7262-9249-114
Email: info@shure.de

Asia, Pacific:

Shure Asia Limited
22/F, 625 King's Road
North Point, Island East,
Hong Kong

Phone: (+852) 2893-4290
Fax: (+852) 2893-4055
Email: info@shure.com.hk