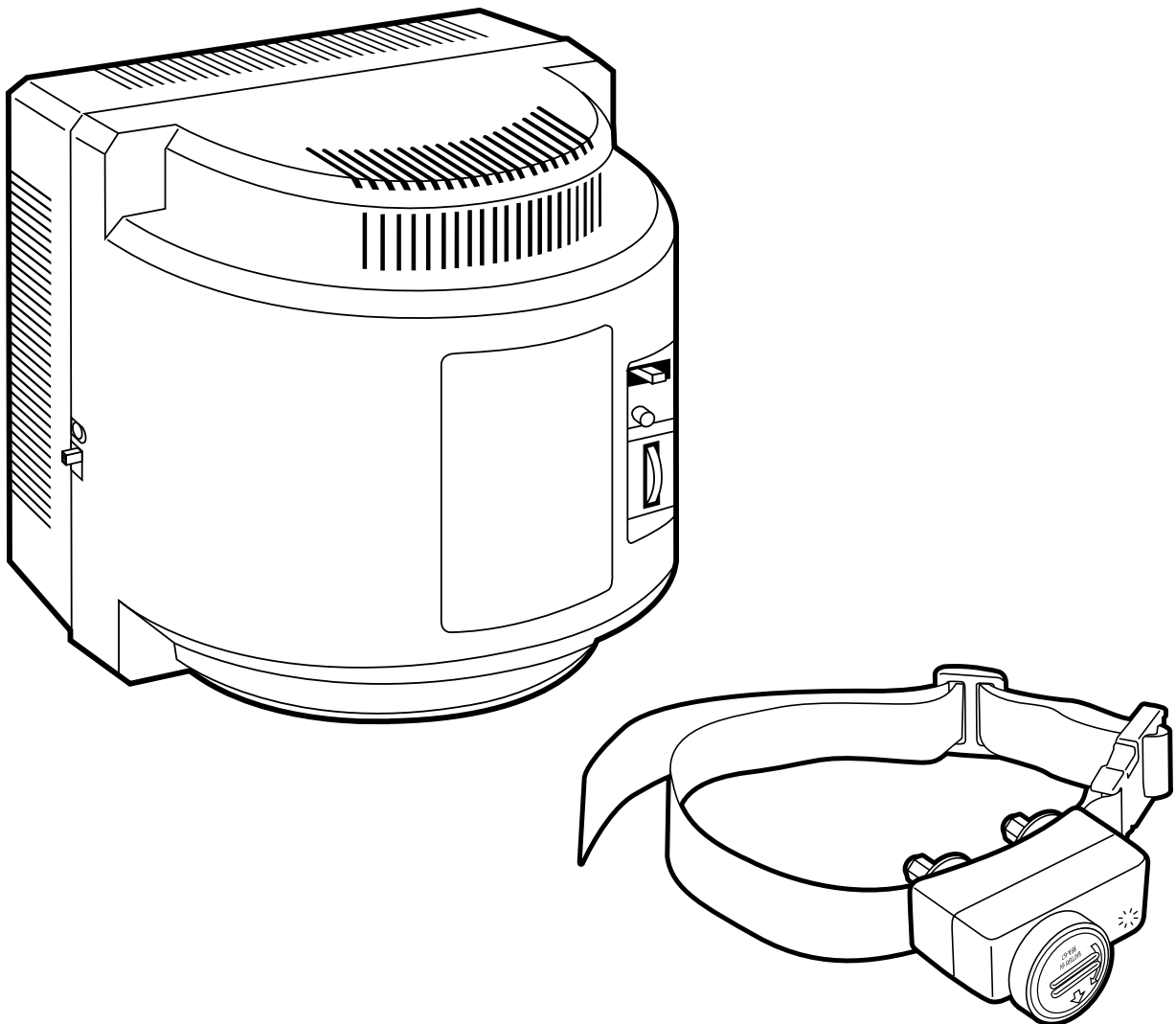




PIF-300

Wireless Pet Containment System



Please read this entire product manual before beginning.

Welcome

You and your pet were made for each other. Our aim is to help you have the best companionship and the most memorable moments together. Your new Wireless Pet Containment System is designed to give your pet maximum freedom while keeping him safe. We know that safe pets make happy owners. Before getting started, please have your utilities marked, and take a moment to read through the important safety information. If you have any questions, please don't hesitate to contact us.

Hereinafter Radio Systems Corporation, Radio Systems PetSafe Europe Ltd., Radio Systems Australia Pty Ltd. and any other affiliate or Brand of Radio Systems Corporation may be referred to collectively as "We" or "Us."

Important Safety Information

Explanation of Attention Words and Symbols used in this product manual



This is the safety alert symbol. It is used to alert you to potential personal injury hazards. Obey all safety messages that follow this symbol to avoid possible injury or death.

⚠ WARNING

WARNING indicates a hazardous situation which, if not avoided, could result in death or serious injury.

⚠ CAUTION

CAUTION, used with the safety alert symbol, indicates a hazardous situation which, if not avoided, could result in minor or moderate injury.

CAUTION

CAUTION, used without the safety alert symbol, indicates a hazardous situation which, if not avoided, could result in harm to your pet.

NOTICE

NOTICE is used to address practices not related to personal injury.

⚠ WARNING

- Not for use with aggressive dogs. Do not use this product if your dog is prone to aggressive behavior. Aggressive dogs can cause severe injury or death to their owners and others. If you are not sure that this product is right for your dog, please talk to your veterinarian or a certified trainer.
- Risk of electric shock. Use the fence transmitter indoors in a dry location only.
- Risk of explosion if battery is replaced by an incorrect type. Do not short circuit, mix old and new batteries, dispose of in fire, or expose to water. When batteries are stored or disposed, they must be protected from shorting. Dispose of used batteries properly.

⚠ CAUTION

This PetSafe® Wireless Pet Containment System is NOT a solid barrier. The system is designed to act as a deterrent to remind pets by static correction to remain in the boundary established. It is important that you reinforce training with your pet on a regular basis. Since the tolerance level to static correction varies from pet to pet, Radio Systems Corporation CANNOT guarantee that the system will, in all cases, keep a pet within the established boundary. Not all pets can be trained to avoid crossing the boundary! Therefore, if you have reason to believe that your pet may pose a danger to others or harm himself if he is not kept from crossing the boundaries, you should NOT rely solely upon the PetSafe® Wireless Pet Containment System to confine your pet. Radio Systems Corporation shall NOT be liable for any property damage, economic loss or any consequential damages, sustained as a result of any animal crossing the boundary.

- This product is not a toy. Keep it out of the reach of children.

CAUTION

Proper fit of the receiver collar is important. A receiver collar worn for too long or made too tight on the pet's neck may cause skin damage ranging from redness to pressure ulcers; this condition is commonly known as bed sores.

- **Avoid leaving the receiver collar on your pet for more than 12 hours per day.**
- When possible reposition the receiver collar on the pet's neck every 1 to 2 hours.
- Check the fit to prevent excessive pressure; follow the instructions in this product manual.
- Never connect a leash to a receiver collar with contact points. It will cause excessive pressure on the contact points.
- When using a separate collar for a leash, do not put pressure on the receiver collar.
- Wash your pet's neck area and the contact points of the receiver collar weekly with a damp cloth.
- Examine the contact area daily for signs of a rash or a sore.
- If a rash or sore is found, discontinue use of the receiver collar until the skin has healed.
- If the condition persists beyond 48 hours, see your veterinarian.
- For additional information on bed sores and pressure necrosis, please visit our website.

CAUTION

These steps will help keep your pet secure and comfortable. Millions of pets are comfortable while they wear stainless steel contact points. Some pets are sensitive to contact pressure. You may find after some time that your pet is very tolerant of the receiver collar. If so, you may relax some of these precautions. It is important to continue daily checks of the contact area. If redness or sores are found, discontinue use until the skin has fully healed.

- You may need to trim the hair in the area of the contact points. Never shave your pet's neck; this may lead to a rash or infection.
- Always remove your pet's receiver collar before performing any transmitter testing.
- The receiver collar should not be on your pet when the system is tested. Your pet may receive an unintended correction.
- The boundary zone must be tested whenever an adjustment is made to the transmitter setting to prevent unintended corrections to your pet.
- Remove the receiver collar from your pet when indoors to avoid activation of the receiver collar.
- If you use a collar and leash for training, be sure the extra collar does not put pressure on the contact points.
- Never remove power from the system when the receiver collar is on the pet. This may activate the receiver collar.
- Radio Systems Corporation recommends the use of an Uninterruptible Power Supply (UPS) for use with your wireless fence. Should the power go out at your home, your pet will be unprotected. Power outages can be unpredictable, and the use of a UPS will provide you with some time to properly restrain your pet.

In rare instances, if your pet is near the boundary at the time when the power fails, it is possible that your pet will receive a correction. This correction will stop after a 30 second timeout period has been reached. This is due to the operation of the receiver collar which is activated by the absence of the containment signal.

While results will vary depending on the UPS manufacturer's specifications the following are typical examples to guide your choice of UPS:

- Using a 400 VA UPS a consumer should expect 3 hours of backup time.
- Using a 900 VA UPS a consumer could expect 8 hours of backup time.

If settings below maximum fence size are used, additional backup time will result. At minimum fence size settings backup time may be more than two times the backup time estimated at maximum fence size.

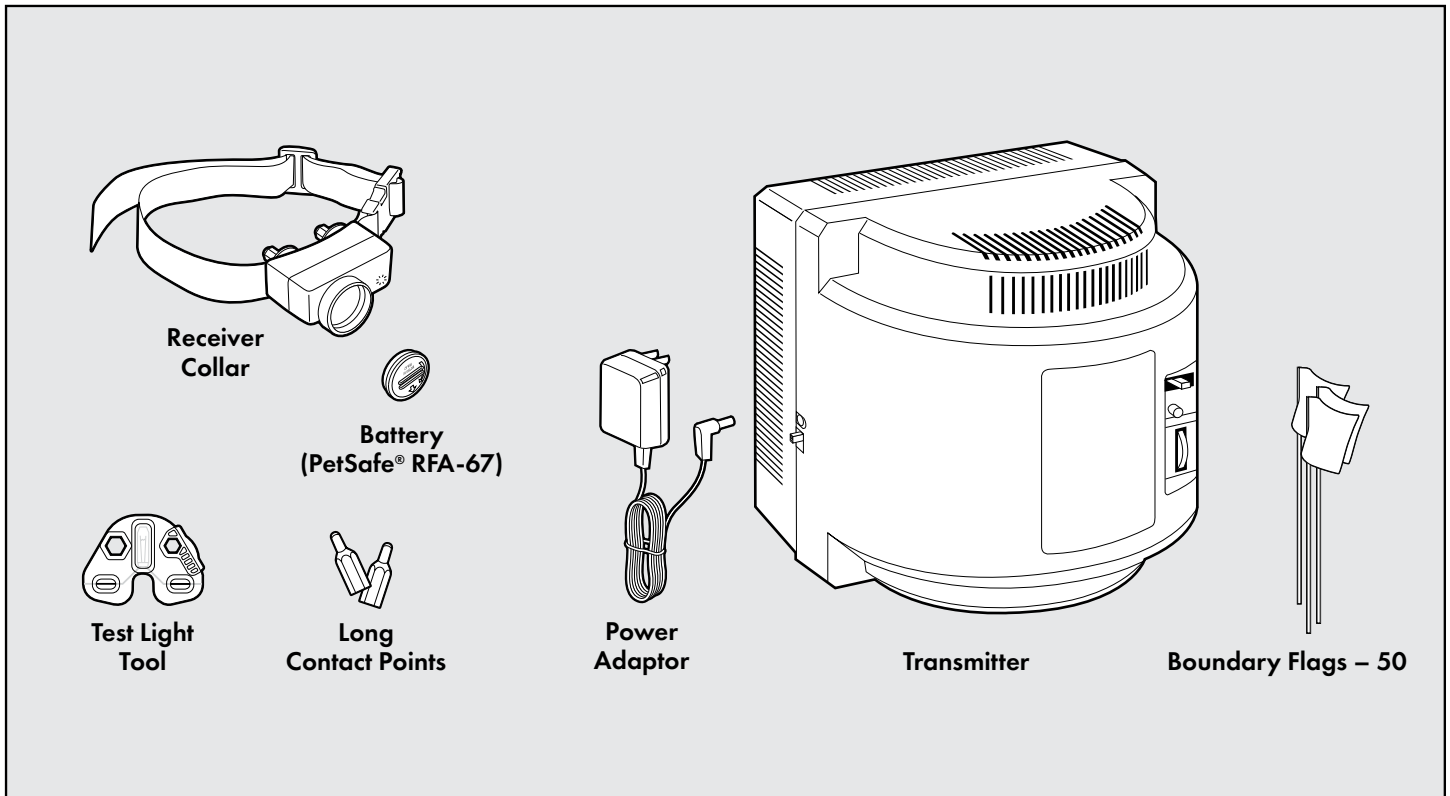
NOTICE

- Do not place anything on the top of the transmitter or cover any ventilation holes. This may overheat the transmitter and cause early transmit failure.
- Do not place the transmitter in a closet or any other confined, unventilated area.
- Do not place the transmitter on or near a metal surface.

Table of Contents

Components.....	5
Other Items You May Need	5
How the System Works	6
Key Definitions.....	6
Operating Guide	7
Step 1: Set up the Transmitter	7
Step 2: Prepare the Receiver Collar.....	7
Step 3: Adjust the Pet Area to Desired Size.....	9
Step 4: Place the Boundary Flags	10
Step 5: Fit the Receiver Collar.....	11
Training	12
Day 1	12
Days 2–4	12
Days 5–8	13
Days 9–30.....	13
Taking Your Pet Out of the Pet Area	13
Wireless-to-Go	13
Troubleshooting	14
Terms of Use and Limitation of Liability	16
Compliance.....	16
Customer Care International	17
Battery Disposal	17
Important Recycling Advice	17
Perchlorate Battery.....	17
Warranty	18
Mounting Template.....	20

Components



Other Items You May Need

- Pliers
- Scissors
- Lighter
- Drill & mounting hardware
- Tape measure
- Non-metallic collar and leash

Set up and training help: www.petsafe.com

How the System Works

The PetSafe® Wireless Pet Containment System has been proven safe, comfortable, and effective for pets over 8 lb. The system works by transmitting a radio signal up to 90 ft. in all directions. You temporarily define the pet area with boundary flags for a visual aid in training your pet. Your pet wears a receiver collar with contact points that touch his neck, and, once trained, is allowed to roam freely in the pet area. When your pet reaches the boundary zone, the receiver collar gives a warning tone before delivering a safe static correction through the contact points to get his attention until he returns to the pet area.

Key Definitions

Pet Area: Distance from the transmitter where your pet can roam freely.

Boundary Zone: 2 to 3 ft. wide area outside the pet area where your pet's receiver collar will begin to beep and then begin to deliver a static correction. The correction will start in the boundary zone and continue anywhere beyond the pet area.

Note: The receiver collar is equipped with a safety timeout feature that will stop correcting after 30 seconds if your pet remains outside the pet area.

Receiver Collar: Receives the radio signal from the transmitter.

Correction Level Button: Adjusts the level of static correction your pet receives outside the pet area.

Receiver Indicator Light: Indicates the level of correction at which the receiver collar is set. This light also serves as a low battery indicator.

Contact Points: Deliver the safe static correction when your pet moves into the boundary zone.

Transmitter: Transmits the radio signal and is the center of the pet area.

Power Jack: Where the power adaptor plugs into the transmitter. The transmitter is powered by a standard 120 volt outlet.

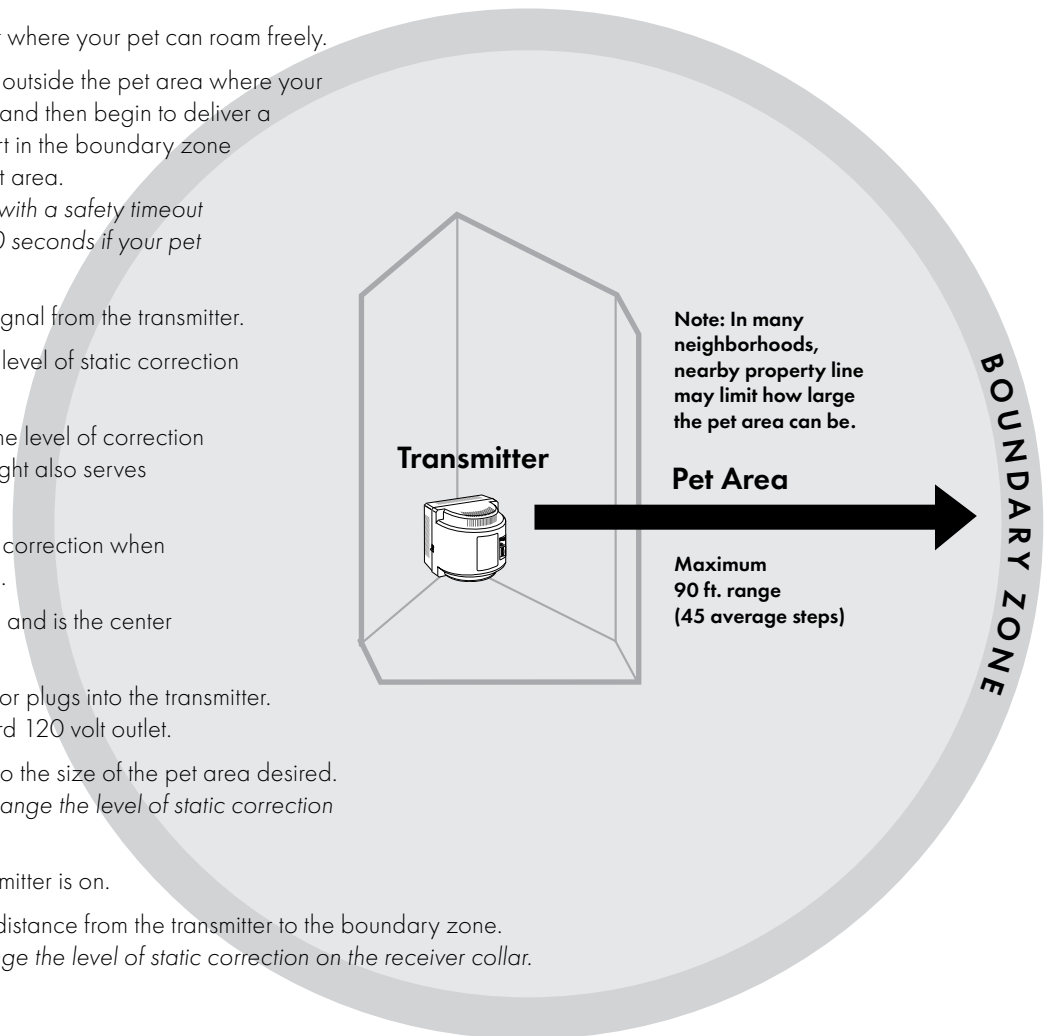
Boundary Switch: Adjust according to the size of the pet area desired.

Note: Adjusting the switch does not change the level of static correction on the receiver collar.

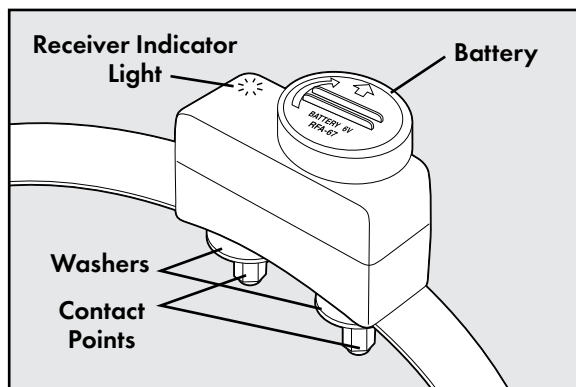
Power Light: Indicates when the transmitter is on.

Boundary Control Dial: Adjusts the distance from the transmitter to the boundary zone.

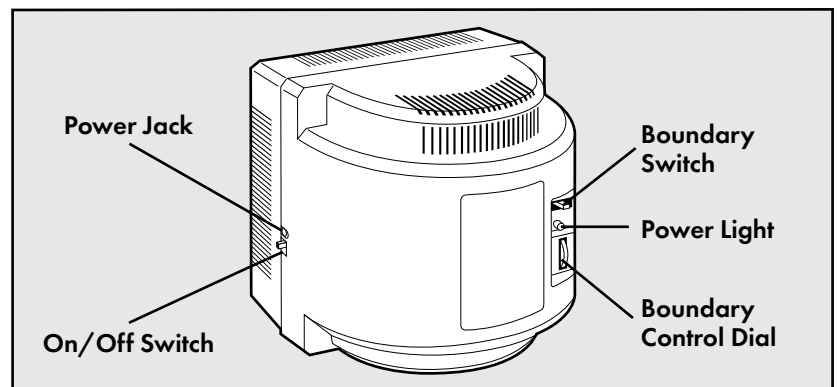
Note: Adjusting the dial does not change the level of static correction on the receiver collar.



Receiver Collar



Transmitter



Operating Guide

Step 1: Set up the Transmitter

Important: You may need to move the transmitter several times before determining the final location. The transmitter is located at the exact center of the pet area.

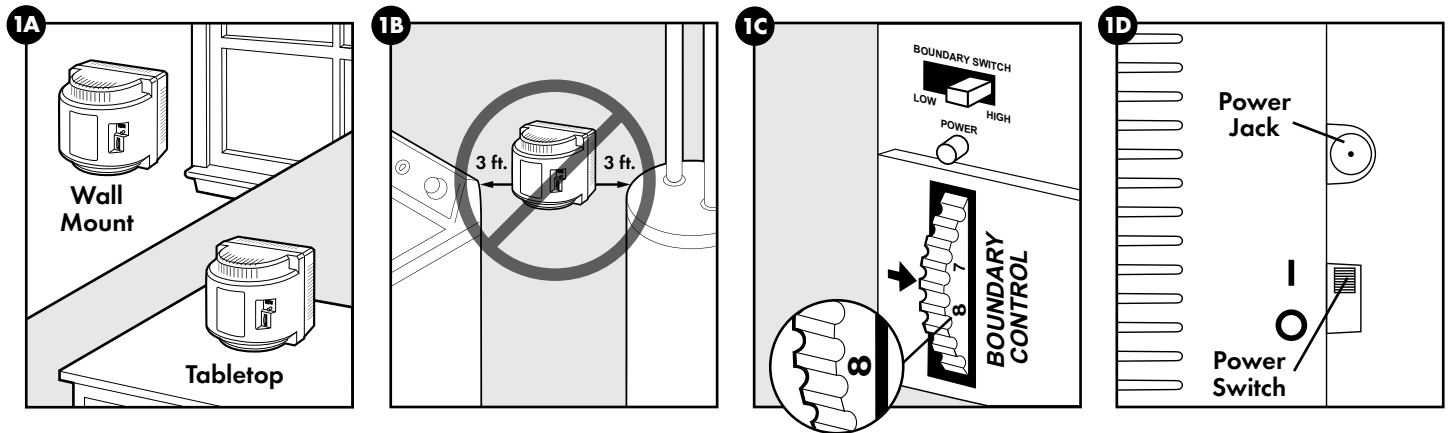
Place the transmitter:

- At least 2 ft. above the floor located on the ground floor of your home.
- In a dry, well ventilated, protected area.
- In an area where temperatures do not fall below -10°F (-23°C) or rise above 104°F (40°C).
- Mounted to a wall, on a non-metal table, or other hard surface to ensure proper ventilation (1A). A mounting template is included on the back of this guide.
- At least 3 ft. from large metal objects, as these items may reduce the size and shape of your pet area (1B). Placing the transmitter inside a metal building or shed can reduce the maximum range of the system.

NOTICE

- Do not place anything on top of the transmitter or cover any ventilation holes. This may overheat the transmitter and cause early transmit failure.
- Do not place the transmitter in a closet or any other confined, unventilated area.
- Do not place the transmitter on or near a metal surface.

To maximize your pet area, make sure the boundary switch is on "high" and the boundary control dial is set to "8" (1C). Plug the power adaptor into the power jack and a standard 120 volt outlet. Turn the transmitter on (1D).



Step 2: Prepare the Receiver Collar

Your receiver collar comes with short contact points installed. Use the long contact points for pets with long or thick hair. Tighten the contact points using the test light tool (2A) one-half turn beyond finger tight. Check the tightness weekly.

Insert and Remove the Receiver Collar Battery

Note: Do not install the battery while the receiver collar is on your pet.

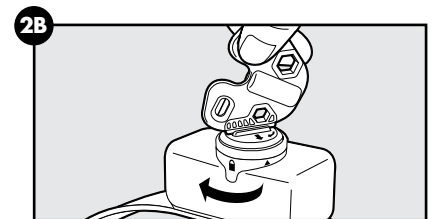
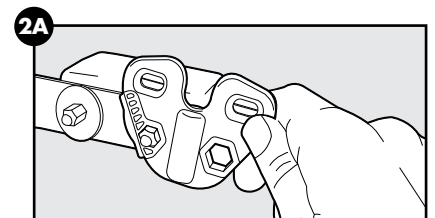
This receiver collar utilizes a replaceable PetSafe® battery (RFA-67). This unique battery is designed to make battery replacement easier and increase water protection.

To insert the battery, align the symbols on the battery (arrow) and receiver collar (triangle) (2B). Use the edge of the test light tool (2B) to turn the battery clockwise until the arrow lines up with the lock symbol on the housing.

To remove the battery, turn the battery counter-clockwise using the edge of the test light tool (2C). DO NOT attempt to cut into or pry open the battery. Be sure to discard the used battery properly.

WARNING

Risk of explosion if batteries are replaced by an incorrect type. Do not short circuit, mix old and new batteries, dispose of in fire, or expose to water. When batteries are stored or disposed, they must be protected from shorting. Dispose of used batteries properly.



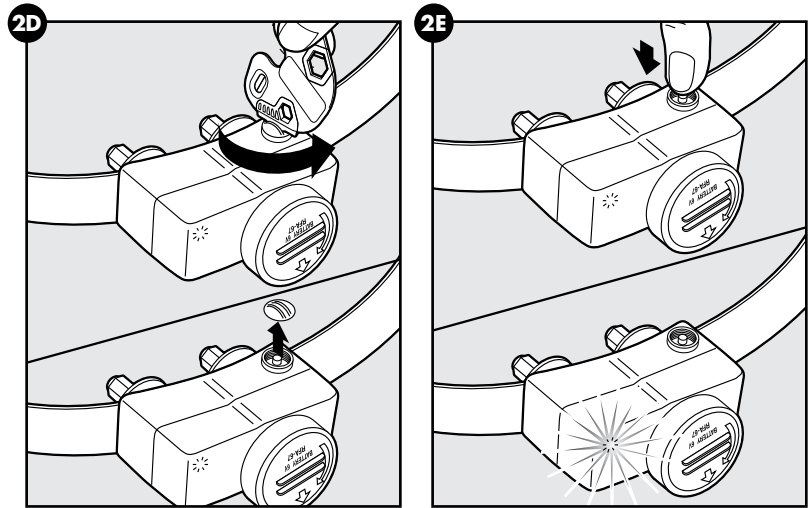
Note: Before replacing the battery, discharge all the power by holding the mode button for at least 30 seconds until the LED is no longer illuminated.

A replacement PetSafe® battery (RFA-67) can be found at many retailers. Contact the Customer Care Center or visit our website at petsafe.com to locate a retailer near you.

Set the Static Correction Level

Read all steps before attempting to set the static correction level.

1. Remove the clear plastic cover with the edge of the test light tool to expose the correction level button (2D).
2. With the battery installed, press the correction level button and release when the receiver LED indicator light lights up (2E).
3. The receiver LED indicator light will emit a series of flashes representing the static correction level.
4. Increase the static correction level by pressing and releasing the correction level button within 5 seconds of the previous series of flashes.
5. After setting the static correction level, replace the cover to protect the correction level button.



The static correction levels increase in strength from 1 to 6. Pushing the correction level button while the receiver collar is on level 6 will cause the receiver collar to revert to level 1. Refer to the Function and Response Table to choose the static correction level that best fits your pet.

The receiver indicator light acts as a low battery indicator. The light will flash every 4 to 5 seconds when battery replacement is required.

Battery Contact Verification

Remove the receiver collar from your pet. Press the button and verify that the LED light illuminates. If the LED light does not come on, remove the battery. Locate the metal tabs in the battery well. Gently lift the tabs to ensure that the battery will make good contact. Replace the battery into the receiver collar. Press the button and check that the LED light illuminates.

Function and Response Table		
Indicator Light Response	Static Correction Level	Receiver Collar Function
1 flash	1	No static correction, tone-only
2 flashes	2	Low static correction
3 flashes	3	Medium-low static correction
4 flashes	4	Medium static correction
5 flashes	5	Medium-high static correction
6 flashes	6	High static correction
Flashes once every 4 to 5 seconds	–	Indicates low battery

Over Correction Protection

If your pet enters the boundary zone or continues anywhere beyond the pet area, this feature limits the static correction duration to 30 seconds.

In the unlikely event that your pet leaves the pet area, he will not receive a static correction upon return to the pet area.

Step 3: Adjust the Pet Area to Desired Size

Make sure the entire pet area lies within your property boundaries (3A). Always start determining the boundary zone at the shortest distance from the transmitter. Place the boundary switch on "low" if the boundary zone will be less than 45 ft. from the transmitter.

Make sure the receiver collar battery is properly installed, set the static correction to **level 2** or above, and hold the test light contacts to the contact points (3B).

Note: If your next-door neighbor has an In-Ground Containment System, see the troubleshooting section on page 14.

Test Light Instructions

1. Set the static correction to **level 2** or above.
2. Hold the test light contacts to the contact points (3B).
3. Walk toward the boundary zone holding the receiver collar about waist high until the test light flashes (3C).

Save test light for future testing.

Note: If the test light does not flash, install a new battery and retest. If test light still does not flash, contact the Customer Care Center.

To maximize your pet area, make sure the boundary switch is on "high" and the boundary control dial is set to "8." Plug the power adaptor into the power jack and a standard 120 volt outlet.

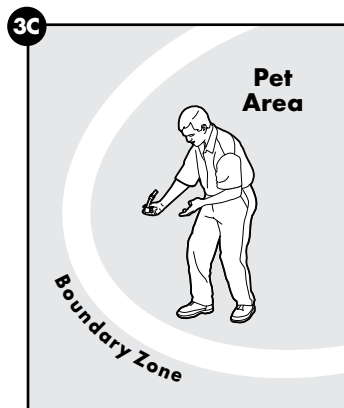
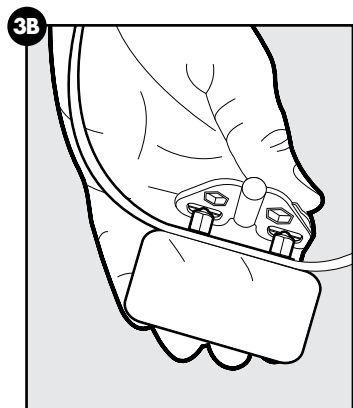
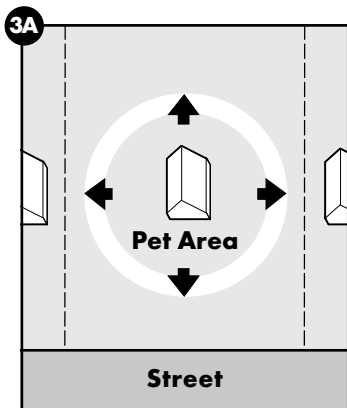
Two-Person Method

Hold the receiver collar about waist high with the logo side facing away from the transmitter and the contact points facing upwards. Walk to the edge of the desired pet area. Facing away from the transmitter, hold the receiver collar at the edge of the desired pet area (3C).

Starting with the boundary control dial set to "8," have a second person turn the dial down SLOWLY. When the receiver collar starts to beep, tell the person to stop turning the boundary control dial. Record your settings below for future reference.

One-Person Method

Measure the shortest distance from the desired boundary zone to the transmitter. Find the distance on the transmitter range chart on page 10 and set the boundary switch and boundary control dial. Hold the test light contacts to the contact points (3B). Take the receiver collar to the boundary zone with the logo side facing away from the transmitter and contact points facing upwards (3C). Hold the receiver collar about waist high until it beeps and the test light flashes. If the receiver collar beeps before or after the desired boundary zone, return to the transmitter and adjust the boundary control dial. Repeat this process until the receiver collar is beeping at the desired location. Record your settings on page 10 for future reference.



Transmitter Range Chart

Boundary Control Dial Position	Boundary Switch Low (-)	Boundary Switch High (+)
1	5–10 ft.	5–10 ft.
2	5–10 ft.	5–10 ft.
3	15–20 ft.	25–35 ft.
4	20–25 ft.	42–55 ft.
5	25–30 ft.	55–65 ft.
6	35–40 ft.	75–85 ft.
7	40–45 ft.	85–90 ft.
8	40–45 ft.	85–90 ft.

Note: These distances are approximate.

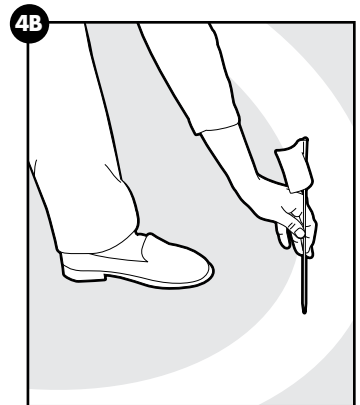
Record Your Settings

Location	Final Boundary Switch Setting (High + or Low -)	Final Boundary Control Dial Position (1–8)	Receiver Static Correction Level (1–6)
Home			
Camping			
Vacation			
Other			

Step 4: Place the Boundary Flags

The boundary flags are visual reminders for your pet of where the boundary zone is located. The receiver collar will activate within 2 to 3 ft. of the boundary flags.

1. Using the test light, with the static correction level set at 2 or greater, hold the receiver collar at your pet's neck height with logo side facing away from the transmitter.
2. Walk towards the boundary zone until the receiver collar tone sounds and the test light flashes. **(4A)**.
3. Place a boundary flag in the ground **(4B)**.
4. Walk back into the pet area until the repeating tone stops.
5. Repeat this process around the boundary zone until it is marked with boundary flags every 10 ft.



The boundary flags may be in different parts of the boundary zone and may not be in a line. The boundary zone is 2 to 3 ft. wide.

Step 5: Fit the Receiver Collar

Important: The proper fit and placement of your receiver collar is important for effective training. The contact points must have direct contact with your pet's skin on the underside of his neck.

CAUTION

Please read and follow the instructions in this manual. Proper fit of the receiver collar is important. A receiver collar worn for too long or made too tight on the pet's neck may cause skin damage, ranging from redness to pressure ulcers. This condition is commonly known as bed sores.

- **Avoid leaving the receiver collar on your pet for more than 12 hours per day.**
- When possible reposition the receiver collar on the pet's neck every 1 to 2 hours.
- Check the fit to prevent excessive pressure; follow the instructions in this product manual.
- Never connect a leash to a receiver collar with contact points. It will cause excessive pressure on the contact points.
- When using a separate collar for a leash, do not put pressure on the receiver collar.
- Wash your pet's neck area and the contact points of the receiver collar weekly with a damp cloth.
- Examine the contact area daily for signs of a rash or a sore.
- If a rash or sore is found, discontinue use of the receiver collar until the skin has healed.
- If the condition persists beyond 48 hours, see your veterinarian.
- For additional information on bed sores and pressure necrosis, please visit our website.

These steps will help keep your pet secure and comfortable. Millions of pets are comfortable while they wear stainless steel contact points. Some pets are sensitive to contact pressure. You may find after some time that your pet is very tolerant of the receiver collar. If so, you may relax some of these precautions. It is important to continue daily checks of the contact area. If redness or sores are found, discontinue use until the skin has fully healed.

You may need to trim the hair in the area of the contact points. Never shave the dog's neck; this may lead to a rash or infection.

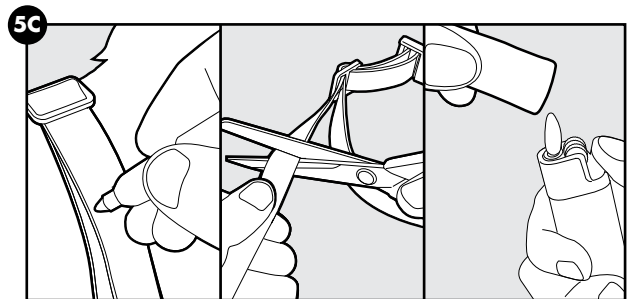
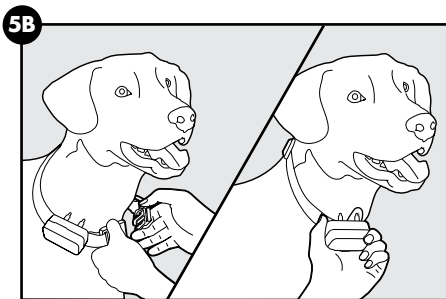
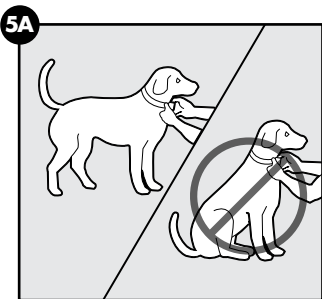
To assure a proper fit, please follow these steps:

1. Make sure that the battery is not installed in the receiver collar.
2. Start with your pet standing comfortably (**5A**).
3. To make it easier to hear the warning tone, place the receiver collar on your pet with the logo side of receiver collar facing up.
4. Center the contact points underneath your pet's neck, touching the skin.

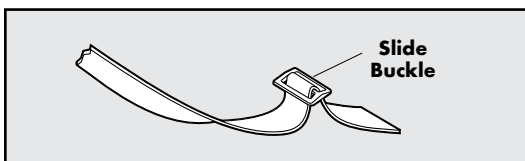
CAUTION

You may need to trim the hair in the area of the contact points. Never shave the dog's neck; this may lead to a rash or infection.

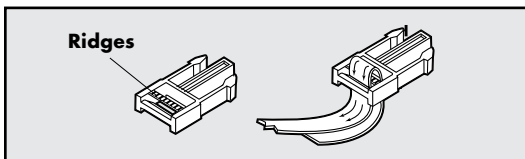
5. Check the tightness of the receiver collar by inserting one finger between the end of a contact point and your pet's neck. The fit should be snug but not constricting (**5B**).
6. Allow your pet to wear the receiver collar for several minutes then recheck the fit. Check the fit again as your pet becomes more comfortable with the receiver collar.
7. Trim the receiver collar as follows (**5C**):
 - a. Mark the desired length of the receiver collar with a pen. Allow for growth if your pet is young or grows a thick winter coat.
 - b. Remove the receiver collar from your pet and cut off the excess.
 - c. Before placing the receiver collar back onto your pet, seal the edge of the cut collar strap by applying a flame along the frayed edge.
8. Put the battery in the receiver collar.



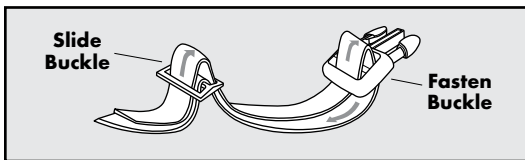
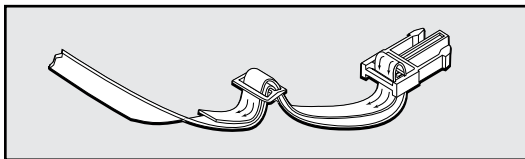
Re-thread the Receiver Collar



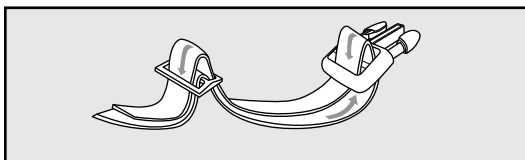
The slide buckle prevents the receiver collar from becoming loose around your pet's neck.



The ridges must be facing up; the receiver collar will slip if it is not properly threaded.



To loosen: Slide the strap through the Slide and Fasten Buckles and pull down.



To tighten: Slide the strap up through the Fasten Buckle and pull through the Slide Buckle.

Training

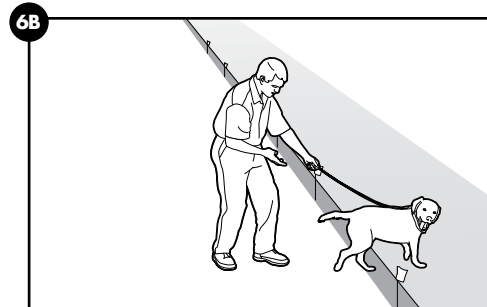
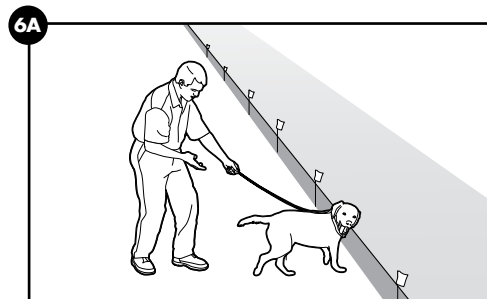
- Remember that this system is not a solid barrier. Using it successfully requires that you spend some time training your pet.
- Finish each training session on a positive note with lots of praise and play. Remove the receiver collar after each training session.
- While your pet is still learning the boundary, contain him by another means, such as with a pen or a leash.
- Put a separate non-metallic collar on your pet's neck and attach a leash.
- Be sure to place the receiver collar on your dog's neck with the PetSafe® logo facing up.
- If your pet appears to be stressed, slow down the training schedule, add additional days of training or increase the amount of play time. Common stress signals include pulling on the leash toward the house, ears tucked or pulled back, tail down or tucked between legs, body lowered, nervous/frantic movement or stiffening of the pet's body, lip-licking or yawning.

Day 1

For the first day, start with the receiver collar set to level 1, tone-only. With your pet on a leash and with his favorite treats on hand, allow him to explore the pet area (6A). Allow your pet to cross the boundary (6B) and hear the tone from the receiver collar, then ask him to come back into the pet area (6C) and praise and reward him. Your goal is for your dog to associate being inside the pet area with rewarding experiences. Dogs are sensitive. Keep your mood upbeat as dogs can understand when you are happy or upset. Do 2 or 3 training sessions for about 10-15 minutes each. Do not try to do too much too quickly. More frequent short sessions are better than less frequent, longer sessions.

Days 2-4

On days 2 through 4, repeat this process, but with the receiver collar set to level 2—the mildest static correction level. Closely observe your pet's behavior while he is in the boundary zone (6B), and note whether or not your dog responds to the correction. Indicators of a response are looking around in curiosity, flicking of the ears or scratching at the receiver collar. If he does not respond, check the fit of the receiver collar to make sure the contact points are making contact with his skin. If the receiver collar is fit correctly and your dog does not respond, then move up to the next correction level and repeat the process. Do 2 or 3 training sessions for about 10-15 minutes each. Your goal is for your dog to consistently choose to stay in the pet area. If necessary, add in more days of training before moving on to the next step.

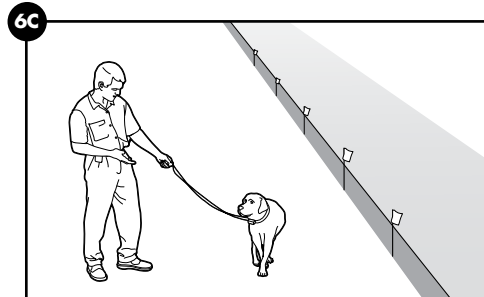


Days 5–8

On days 5 through 8, retain the receiver collar settings from the last training session, but stage some distractions to test your dog's reliability. The goal is to have your pet stay within the boundary even with new temptations. Start with simple temptations and work your way up. Some examples are:

- Have a family member cross from inside the boundary and exit it.
- Place a toy outside the boundary.
- Have a friend or neighbor walk another pet outside the boundary area.

Remember to keep your pet on a leash throughout this process while he is still learning the boundary. Also, never coax your pet to leave the pet area.

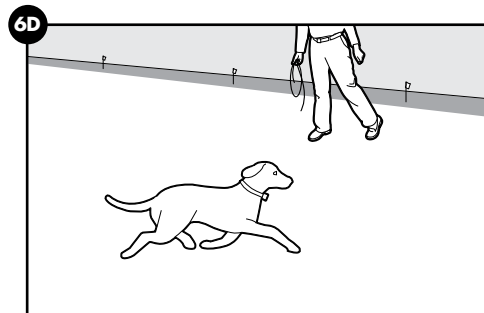


CAUTION Be sure the extra collar does not put pressure on the contact points.

Days 9–30

Once your pet consistently respects the boundary zone regardless of distractions or temptations, he is ready for the next step: unleashed supervision (6D). Stay close by with a leash at hand. Play with your pet for a while during the first few sessions. If your dog does not try to cross the boundary zone, occupy yourself with another task in the yard, and allow him to freely explore. Continue watching your pet. If he escapes, remove the receiver collar and lead him back into the pet area. Start these sessions at about 15 minutes and gradually work up to an hour or more.

When your pet proves trustworthy, you can let him out on his own. Continue to check on him regularly. You can remove every other boundary flag every 4 days until all the flags are removed. Save them in case you move or need to train another pet.



Taking Your Pet Out of the Pet Area

Important: Remove the receiver collar and leave it at home.

Once your pet learns the boundary zone, he will be reluctant to cross it for walks or car rides.

Option 1:

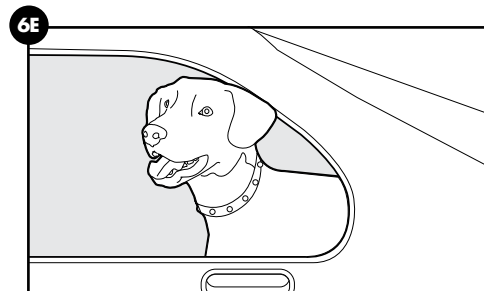
Replace the receiver collar with a regular collar. Put your pet in a car that is within the pet area and drive him out of the pet area (6E).

Option 2:

Replace the receiver collar with a regular collar and leash. Walk your pet out of the pet area while giving a command such as "OK" at a specific place along the boundary zone (the end of your driveway, sidewalk, etc.). Always leave the pet area from the same spot in your yard with a leash and your pet will associate leaving the pet area only on a leash, only at this spot, and only with a person. You may initially need to convince your pet to leave the pet area with a treat and lots of praise.

Note: You may also carry your pet out of the pet area.

Congratulations! You have now completed the training program. You are both ready to enjoy more freedom. Just make sure to continue to check the tightness of the receiver collar and remove it when it is not in use.



Wireless-to-Go

Your PetSafe® Wireless Pet Containment System is completely portable. Follow the setup procedures (Steps 1 through 4) wherever you wish to have containment of your pet. Reestablish the pet area and mark it with boundary flags so your pet knows his boundary zone. Place the transmitter indoors at least 3 ft. from large metal objects.

Note: If setting up in a metal building or vehicle, the maximum size of the pet area may be reduced. Be sure to remove the receiver collar battery before turning off the transmitter. If you want to power the transmitter from a car or other DC source, use an inverter rated for 50 watts or more.

Troubleshooting

<p>The receiver collar is not beeping when setting up the boundary zone.</p>	<ul style="list-style-type: none"> • For some people, the tone may be difficult to hear. • Use the test light as explained in the “Test Light Instructions” section, and use it to determine the location of the boundary zone. • Check that the transmitter is set up according to directions and install a new battery.
<p>The receiver collar is not beeping or administering a static correction.</p>	<ul style="list-style-type: none"> • Check that the transmitter is plugged into a working 120 volt outlet, turned on, the power light is on, and the transmitter controls are set at your desired settings. • Check the receiver battery to make sure it is installed properly. • Replace the receiver collar battery.
<p>The receiver collar is beeping everywhere.</p>	<ul style="list-style-type: none"> • Check that the transmitter is plugged into a working standard 120 volt outlet, turned on, the power light is on, and the transmitter controls are set at your desired settings.
<p>The receiver collar is beeping inside the house.</p>	<ul style="list-style-type: none"> • It is recommended to remove the receiver collar from your pet when indoors to avoid activation of the receiver collar. • Make sure the transmitter is on and set up according to the directions. • Ensure the entire house is within the pet area. The transmitter may need to be moved to adjust the pet area to include the entire house. • If relocating the transmitter, remove the receiver collar from your pet before turning the transmitter off.
<p>My pet is receiving a static correction in his metal crate.</p>	<ul style="list-style-type: none"> • Remove the receiver collar from your pet when placing him in his metal crate. • The receiver collar activates when it loses the transmitter signal. The metal crate may block the transmitter signal which causes the receiver collar to activate.
<p>The boundary zone seems to fluctuate.</p>	<ul style="list-style-type: none"> • This is normal for the electromagnetic field of the Wireless System. The field may be affected by surrounding “electronic noise,” which can cause it to fluctuate up to 5%. • Where the receiver collar activates is influenced by the speed and orientation of the receiver collar as your pet enters the boundary zone.
<p>The receiver collar activates in the middle of the yard.</p>	<ul style="list-style-type: none"> • The receiver collar activates when it loses the transmitter signal. This sometimes occurs if a large metal object is between the receiver collar and transmitter, if the orientation of the receiver collar changes near the boundary zone, or if the surrounding “electronic noise” interferes with the signal. If this continues to occur, consider relocating the transmitter and resetting the pet area.
<p>The receiver collar is beeping but my pet is not responding to the static correction.</p>	<ul style="list-style-type: none"> • Make sure the static correction level is set at 2 or above. • Test the receiver collar with the test light. • If the test light flashes, check the fit of the receiver collar. • Trim your pet’s fur where the contact points touch the neck and/or switch to the longer contact points. • Increase the static correction level. • Repeat training steps to reinforce training.
<p>My pet reacts strongly to the static correction and has become fearful.</p>	<ul style="list-style-type: none"> • Lower the static correction level. • Make sure you are in control of the situation when your pet receives his first static corrections (have him on a leash attached to a separate, non-metallic collar) and lead him into the pet area and praise him. If your pet remains fearful, suspend training and start again the next day. Make sure to end all training sessions on a positive note with lots of praise and play.

Troubleshooting

The power light is not on.	<ul style="list-style-type: none">• Make sure the power adaptor is plugged into a working 120 volt wall outlet.• Verify that the outlet is working properly by plugging in a known working item such as a lamp.• If the power light still does not come on, the fence transmitter and/or power adaptor needs to be replaced. Contact the Customer Care Center.
I was setting up the pet area and after I turned down the boundary control dial, the receiver collar would no longer beep or correct.	<ul style="list-style-type: none">• You may have turned the boundary control dial down too quickly, causing the receiver collar to go into power-fail mode. This is a safety feature designed to protect your pet when power to the transmitter goes out.
My next-door neighbor has an In-Ground Containment System and the receiver collar does not activate near their property.	<ul style="list-style-type: none">• Your neighbor's In-Ground Fence System signal may interfere with the operation of the receiver collar preventing activation close to their fence. To minimize the interference, reduce the size of the pet area or move the transmitter away from the In-Ground Fence System.• Adjust the pet area so that the receiver collar activates for at least 5 ft. beyond the reduced boundary setting when walking towards the In-Ground Fence System.
The receiver collar has injured my pet's neck.	<ul style="list-style-type: none">• Failing to follow the important safety information at the front of the product manual has caused pressure ulcers. Some descriptions of advanced pressure ulcers describe the sores as looking like burns on the dog's neck. Be assured that electronic collars do not use enough energy to create electrical burns. The energy in an output pulse is only a few thousandths of a Joule; it is similar in nature to the static pulse that you may feel when getting out of your car. In some cases, pressure ulcers are described as chemical burns. The RFA-67 battery is sealed when installed in the receiver collar housing. This sealing makes it virtually impossible, without misuse or abuse, for your receiver collar battery to leak onto your pet's neck. Please review and follow the important safety information on page 2, and the instructions in Step 5 under the heading "Fit the Receiver Collar" on page 11.

Terms of Use and Limitation of Liability

1. Terms of Use

The use of this product is subject to your acceptance without modification of the terms, conditions and notices contained with this product. Use of this product implies acceptance of all such terms, conditions, and notices. If you do not wish to accept these terms, conditions, and notices, please return the product, unused, in its original packaging and at your own cost and risk to the relevant Customer Care location together with proof of purchase for a full refund.

2. Proper Use

Proper Use includes, without limitation, reviewing the entire Product Manual and any specific safety information statements. The specific temperament or size/weight of your pet may not be suitable for this product. If you are unsure whether this product is appropriate for your pet, please consult your veterinarian or certified trainer prior to use. For products used with pets where training is desired, Radio Systems Corporation recommends that these training products are not used if your pet is aggressive and accepts no liability for determining suitability in individual cases.

3. No Unlawful or Prohibited Use

This product is designed for use with pets only. This product is not intended to harm, injure or provoke. Using this product in a way that is not intended could result in violation of Federal, State or local laws.

4. Limitation of Liability

In no event shall Radio Systems Corporation or any of its associated companies be liable for (i) any direct, indirect, punitive, incidental, special or consequential damage and/or (ii) any loss or damages whatsoever arising out of or connected with the use or misuse of this product. The Purchaser assumes all risks and liability from the use of this product to the fullest extent permissible by law.

5. Modification of Terms and Conditions

Radio Systems Corporation reserves the right to change the terms, conditions and notices governing this product from time to time. If such changes have been notified to you prior to your use of this product, they shall be binding on you as if incorporated herein.

Compliance

FCC: USA

This device complies with part 15 of the FCC Rules. Operation is subject to the following two conditions: (1) This device may not cause harmful interference, and (2) this device must accept any interference received, including interference that may cause undesired operation.

NOTE: This equipment has been tested and found to comply with the limits for a Class B digital device, pursuant to part 15 of the FCC Rules. These limits are designed to provide reasonable protection against harmful interference in a residential installation. This equipment generates, uses, and can radiate radio frequency energy and, if not installed and used in accordance with the instructions, may cause harmful interference to radio communications. However, there is no guarantee that interference will not occur in a specific installation. If interference does occur to radio or television reception, which can be determined by turning the equipment off and on, the user is encouraged to try to correct the interference by one or more of the following measures:

- Reorient or relocate the receiving antenna.
- Increase the separation between the equipment and the receiver.
- Connect the equipment to an outlet on a circuit different from that to which the receiver is connected.
- Contact the Customer Care Center at +1 (800) 732-2677.

CAUTION: Modification or changes to this equipment not expressly approved by Radio Systems Corporation may void the user's authority to operate the equipment.

ACMA: Australia

This device complies with the applicable EMC requirements specified by the ACMA (Australian Communications and Media Authority).

Customer Care International

USA & Canada—Tel: 800-732-2677

Monday–Friday 8 AM – 8 PM / Saturday 9 AM – 5 PM

Australia—Tel: 1800 786 608

Monday–Friday 8:30 AM – 5 PM

New Zealand—Tel: 0800 543 054

Monday–Friday 10:30 AM – 7 PM

Battery Disposal

Separate collection of spent batteries is required in many regions; check the regulations in your area before discarding spent batteries. At the end of the product life, please contact our Customer Care Center to receive instructions on proper disposal of the unit. Please do not dispose of the unit in household or municipal waste. For a listing of Customer Care Center telephone numbers in your area, visit our website at www.petsafe.com.

Important Recycling Advice

Please respect the Waste Electrical and Electronic Equipment regulations in your country. This equipment must be recycled. At the end of the product life, do not place it in the normal municipal waste system. Please check the regulations in your area or return it to where it was purchased so that it can be placed in our recycling system. If these options are not possible, please contact the Customer Care Center for further information.

Perchlorate Battery

Perchlorate Material—special handling may apply. See www.dtsc.ca.gov/hazardouswaste/perchlorate.

Warranty

One Year Non-transferable Limited Warranty

This Product has the benefit of a limited manufacturer's warranty. Complete details of the warranty applicable to this Product and its terms can be found at www.petsafe.com and/or are available by contacting your local Customer Care Center.

United States and Canada—Radio Systems Corporation, 10427 PetSafe Way, Knoxville, TN 37932 USA

Australia/New Zealand—In compliance with the Australian Consumer Law, Warranties Against Defects, effective January 1, 2012, warranty details of this Product are as follows:

One Year Non-transferable Limited Warranty

What is covered: Radio Systems Australia Pty Ltd. (hereinafter referred to as "Radio Systems") warrants to the original retail purchaser, and not any other purchaser or subsequent owner, that its product, when subject to normal and proper residential use, will be free from defects in material or workmanship for a period of one (1) year from the purchase date. An "original retail consumer purchaser" is a person or entity who originally purchases the Product, or a gift recipient of a new product that is unopened and in its original packaging. When serviced by Radio Systems Customer Service, Radio Systems covers labour and parts for the first year of ownership; after the first year, a service or upgrade charge will apply relative to replacement of the product with new or refurbished items at Radio Systems' sole discretion.

The limited warranty is non-transferable and shall automatically terminate if the original retail consumer purchaser resells the Radio Systems product or transfers the property on which the Radio Systems product is installed. This Limited Warranty excludes accidental damage due to dog chews; lightning damage; or neglect, alteration, and misuse. Consumers who purchase products outside of Australia, New Zealand, or from an unauthorised dealer will need to return the Product to the original place of purchase for any warranty issues.

Please note that Radio Systems does not provide refunds, replacements, or upgrades for change of mind, or for any other reason outside of these Warranty terms.

Claims Procedure: Any claim made under this Warranty should be made directly to Radio Systems Australia Pty Ltd. Customer Care Centre at:

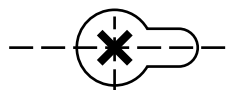
Radio Systems Australia Pty Ltd.
PO Box 3442
Australia Fair QLD 4215, Australia

Australia Residents: 1800 786 608
New Zealand Residents: 0800 543 054
Email: aus-info@petsafe.net

To file a claim, a proof of purchase must be provided. Without a proof of purchase, Radio Systems will not repair or replace faulty components. Radio Systems requests the Consumer to contact the Radio Systems Customer Care Centre to obtain a Warranty Return number, prior to sending the Product. Failure to do so may delay in the repair or replacement of the Product.

If the Product is deemed to be faulty within 30 days from date of original purchase, Radio Systems will organise for a replacement to be sent in advance of returning the faulty Product. A Post Bag will be included with the replacement Product for the return of the faulty Product. The Product must be returned within 7 days of receiving the replacement. If the Product is deemed to be faulty after 30 days from the date of original purchase, the consumer will be required to return the Product to Radio Systems at the consumer's own expense. Radio Systems will test and replace the faulty unit or its components and return to the consumer free of charge, provided the Product is within its said warranty period. This warranty is in addition to other rights and remedies available to you under the law. Radio Systems goods come with guarantees that cannot be excluded under the Australia Consumer Law. You are entitled to a replacement or refund for a major failure and for compensation for any other reasonably foreseeable loss or damage. You are also entitled to have the goods repaired or replaced if the goods fail to be of acceptable quality and the failure does not amount to a major failure.

Should you have any queries or require any further information, please contact our Customer Care Centre on 1800 786 608 (Australia) or 0800 543 054 (New Zealand).



6.75 in.

Mounting Template



Radio Systems Corporation
10427 PetSafe Way
Knoxville, TN 37932
+1 (800) 732-2677

petsafe.com

For a list of patents protecting this product,
please visit www.radiosystemscorporation.com/patents

L400-1422/3

©2020 Radio Systems Corporation