



US009613020B1

(12) **United States Patent**  
**Jacobs, II et al.**

(10) **Patent No.:** **US 9,613,020 B1**  
(45) **Date of Patent:** **Apr. 4, 2017**

(54) **NATURAL LANGUAGE USER INTERFACE FOR COMPUTER-AIDED DESIGN SYSTEMS**

5,117,354 A 5/1992 Long  
(Continued)

(71) Applicant: **Benko, LLC**, New London, NH (US)

FOREIGN PATENT DOCUMENTS

(72) Inventors: **James L. Jacobs, II**, Amherst, NH (US); **John E. Cronin**, Bonita Springs, FL (US); **Christopher M. Huffines**, Williston, VT (US)

WO 0154476 A2 8/2001  
WO 0171626 A2 9/2001  
(Continued)

(73) Assignee: **Benko, LLC**, New London, NH (US)

OTHER PUBLICATIONS

(\*) Notice: Subject to any disclaimer, the term of this patent is extended or adjusted under 35 U.S.C. 154(b) by 99 days.

Xue, S., X. Y. Kou, and S. T. Tan. "Natural voice-enabled CAD: modeling via natural discourse." Computer-Aided Design and Applications 6.1 (2009): 125-136.\*

(Continued)

(21) Appl. No.: **14/486,550**

Primary Examiner — Paras D Shah

(22) Filed: **Sep. 15, 2014**

(74) Attorney, Agent, or Firm — Downs Rachlin Martin PLLC

(51) **Int. Cl.**  
**G10L 15/00** (2013.01)  
**G06F 17/27** (2006.01)  
**G05B 19/4093** (2006.01)  
**G06F 17/50** (2006.01)

(52) **U.S. Cl.**  
CPC ..... **G06F 17/2705** (2013.01); **G05B 19/4093** (2013.01); **G06F 17/50** (2013.01); **G10L 15/00** (2013.01)

(58) **Field of Classification Search**  
CPC ..... G10L 15/00; G10L 15/22; G10L 15/26; G10L 15/265; G05B 19/4093; G05B 19/4099; G05B 19/40931; G05B 19/40932; G05B 19/40933; G05B 19/40935; G05B 19/40936; G05B 19/40938; G05B 19/4097;

(Continued)

(56) **References Cited**

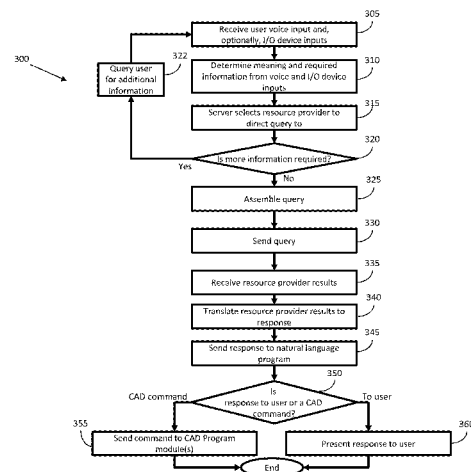
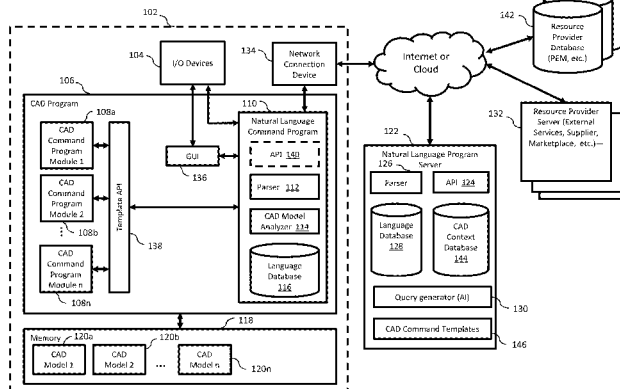
U.S. PATENT DOCUMENTS

4,495,559 A 1/1985 Gelatt, Jr. et al.

(57) **ABSTRACT**

A natural language user interface for computer-aided design systems (CAD) comprises a natural language command module including a parser, language database and a CAD model analyzer, and a natural language server module including a second, increased capability parser, a second, preferably larger language database and a CAD context database. The CAD model analyzer analyzes and retrieves associated CAD model information related to a parsed voice command and the CAD context database provides specific CAD related contextual information to facilitate parsing and interpreting CAD specific commands. The natural language server program module may also include an artificial intelligence based query generator and communicate through a network or cloud with resource providers such as third party market places or suppliers to generate queries for retrieval of third party supplied information necessary to respond to or execute CAD specific voice commands.

1 Claim, 8 Drawing Sheets



(58) **Field of Classification Search**

CPC ..... G05B 2219/13139; G05B 2219/23005;  
                   G05B 2219/23007; G05B 2219/23011;  
                   G05B 2219/23012  
 USPC ..... 704/275; 700/182, 98; 715/964  
 See application file for complete search history.

(56) **References Cited**

## U.S. PATENT DOCUMENTS

5,465,221 A	11/1995	Merat et al.	7,957,830 B2	6/2011	Lukis et al.
5,495,430 A	2/1996	Matsunari et al.	7,979,313 B1	7/2011	Baar
5,552,995 A	9/1996	Sebastian	7,993,140 B2	8/2011	Sakezles
5,570,291 A	10/1996	Dudle et al.	8,000,987 B2	8/2011	Hickey et al.
5,655,087 A	8/1997	Hino et al.	8,024,207 B2	9/2011	Ouimet
5,758,328 A	5/1998	Giovannoli	8,140,401 B2	3/2012	Lukis et al.
5,847,971 A	12/1998	Ladner et al.	8,170,946 B2	5/2012	Blair et al.
5,870,719 A	2/1999	Maritzen et al.	8,175,933 B2	5/2012	Cook, Jr. et al.
5,937,189 A	8/1999	Branson et al.	8,180,396 B2	5/2012	Athsani et al.
6,031,535 A	2/2000	Barton	8,209,327 B2	6/2012	Danish et al.
6,112,133 A	8/2000	Fishman	8,239,284 B2	8/2012	Lukis et al.
6,295,513 B1	9/2001	Thackston	8,249,329 B2	8/2012	Silver
6,341,271 B1	1/2002	Salvo et al.	8,271,118 B2	9/2012	Pietsch et al.
6,343,285 B1	1/2002	Tanaka et al.	8,275,583 B2	9/2012	Devarajan et al.
6,611,725 B1 *	8/2003	Harrison ..... G06T 19/00 345/420	8,295,971 B2	10/2012	Krantz
6,647,373 B1	11/2003	Calton-Foss	8,417,478 B2	4/2013	Gintis et al.
6,701,200 B1	3/2004	Lukis et al.	8,441,502 B2	5/2013	Reggetti et al.
6,750,864 B1	6/2004	Anwar	8,515,820 B2	8/2013	Lopez et al.
6,834,312 B2	12/2004	Edwards et al.	8,554,250 B2	10/2013	Linaker
6,836,699 B2	12/2004	Lukis et al.	8,571,298 B2	10/2013	McQueen et al.
6,859,768 B1	2/2005	Wakelam et al.	8,595,171 B2	11/2013	Qu
6,917,847 B2	7/2005	Littlejohn et al.	8,700,185 B2	4/2014	Yucel et al.
6,922,701 B1	7/2005	Ananian et al.	8,706,607 B2	4/2014	Sheth et al.
7,006,084 B1	2/2006	Buss et al.	8,768,651 B2	7/2014	Bhaskaran et al.
7,058,465 B2	6/2006	Emori et al.	8,798,324 B2	8/2014	Conradt
7,079,990 B2	7/2006	Haller et al.	8,806,398 B2	8/2014	Brathwaite et al.
7,085,687 B2	8/2006	Eckenwiler et al.	8,830,267 B2	9/2014	Brackney
7,089,082 B1	8/2006	Lukis et al.	8,849,636 B2	9/2014	Becker et al.
7,123,986 B2	10/2006	Lukis et al.	8,861,005 B2	10/2014	Grosz
7,134,096 B2	11/2006	Brathwaite et al.	8,874,413 B2	10/2014	Mulligan et al.
7,299,101 B2	11/2007	Lukis et al.	8,923,650 B2	12/2014	Wexler
7,305,367 B1	12/2007	Hollis et al.	8,977,558 B2	3/2015	Nielsen et al.
7,327,869 B2	2/2008	Boyer	9,037,692 B2	5/2015	Ferris
7,343,212 B1	3/2008	Brearley et al.	9,055,120 B1	6/2015	Firman
7,359,886 B2	4/2008	Sakurai et al.	9,106,764 B2	8/2015	Chan et al.
7,366,643 B2	4/2008	Verdura et al.	2001/0023418 A1	9/2001	Suzuki et al.
7,369,970 B2	5/2008	Shimizu et al.	2001/0047251 A1 *	11/2001	Kemp ..... G06F 17/5004 703/1
7,418,307 B2	8/2008	Katircioglu	2002/0065790 A1	5/2002	Oouchi
7,467,074 B2	12/2008	Faruque et al.	2002/0087440 A1	7/2002	Blair et al.
7,496,487 B2	2/2009	Wakelam et al.	2002/0099579 A1	7/2002	Stowell et al.
7,496,528 B2	2/2009	Lukis et al.	2002/0107673 A1	8/2002	Haller et al.
7,499,871 B1	3/2009	McBrayer et al.	2002/0152133 A1	10/2002	King et al.
7,523,411 B2	4/2009	Carlin	2003/0018490 A1	1/2003	Magers et al.
7,526,358 B2	4/2009	Kawano et al.	2003/0069824 A1	4/2003	Menninger
7,529,650 B2	5/2009	Wakelam et al.	2003/0078846 A1	4/2003	Burk et al.
7,565,139 B2	7/2009	Neven, Sr. et al.	2003/0139995 A1	7/2003	Farley
7,565,223 B2	7/2009	Moldenhauer et al.	2003/0149500 A1	8/2003	Faruque et al.
7,567,849 B1	7/2009	Trammell et al.	2003/0163212 A1	8/2003	Smith et al.
7,568,155 B1	7/2009	Axe et al.	2003/0172008 A1	9/2003	Hage et al.
7,571,166 B1	8/2009	Davies et al.	2003/0212610 A1	11/2003	Duffy et al.
7,574,339 B2	8/2009	Lukis et al.	2003/0220911 A1 *	11/2003	Tompras ..... G06F 17/50
7,590,466 B2	9/2009	Lukis et al.	2004/0008876 A1 *	1/2004	Lure ..... G06F 19/3406 382/128
7,590,565 B2	9/2009	Ward et al.	2004/0113945 A1	6/2004	Park et al.
7,603,191 B2	10/2009	Gross	2004/0195224 A1	10/2004	Kanodia et al.
7,606,628 B2	10/2009	Azuma	2005/0055299 A1	3/2005	Chambers et al.
7,630,783 B2	12/2009	Walls-Manning et al.	2005/0125092 A1	6/2005	Lukis et al.
7,656,402 B2	2/2010	Abraham et al.	2005/0144033 A1	6/2005	Vreeke et al.
7,689,936 B2	3/2010	Rosel	2005/0171790 A1	8/2005	Blackmon
7,733,339 B2	6/2010	Laning et al.	2005/0251478 A1	11/2005	Yanavi
7,747,469 B2	6/2010	Hinman	2005/0273401 A1	12/2005	Yeh et al.
7,748,622 B2	7/2010	Schon et al.	2006/0085322 A1	4/2006	Crookshanks
7,761,319 B2	7/2010	Gil et al.	2006/0185275 A1	8/2006	Yatt
7,822,682 B2	10/2010	Arnold et al.	2006/0253214 A1	11/2006	Gross
7,836,573 B2	11/2010	Lukis et al.	2007/0016437 A1	1/2007	Elmufdi et al.
7,840,443 B2	11/2010	Lukis et al.	2007/0067146 A1	3/2007	Devarajan et al.
7,908,200 B2	3/2011	Scott et al.	2007/0073593 A1	3/2007	Perry et al.
			2007/0112635 A1	5/2007	Loncaric
			2007/0198231 A1	8/2007	Walch
			2008/0120086 A1	5/2008	Lilley et al.
			2008/0183614 A1	7/2008	Gujral et al.
			2008/0269942 A1	10/2008	Free
			2008/0281678 A1	11/2008	Keuls et al.
			2009/0058860 A1	3/2009	Fong et al.
			2009/0208773 A1	8/2009	DuPont
			2009/0299799 A1	12/2009	Racho et al.
			2009/0319388 A1	12/2009	Yuan et al.
			2011/0040542 A1	2/2011	Sendhoff et al.

(56)

**References Cited****U.S. PATENT DOCUMENTS**

2011/0047140	A1	2/2011	Free	
2011/0209081	A1	8/2011	Chen et al.	
2011/0213757	A1	9/2011	Bhaskaran et al.	
2012/0016678	A1	1/2012	Gruber et al.	
2012/0072299	A1	3/2012	Sampsel	
2012/0230548	A1	9/2012	Calman et al.	
2012/0316667	A1	12/2012	Hartloff	
2013/0055126	A1*	2/2013	Jackson	G06F 3/04812 715/769
2013/0097259	A1	4/2013	Li	
2013/0100128	A1	4/2013	Steadly et al.	
2013/0138529	A1	5/2013	Hou	
2013/0144566	A1	6/2013	De Biswas	
2013/0166470	A1	6/2013	Grala et al.	
2013/0218961	A1	8/2013	Ho	
2013/0293580	A1	11/2013	Spivack	
2013/0297320	A1*	11/2013	Buser	B29C 67/0055 704/275
2013/0297460	A1	11/2013	Spivack	
2013/0311914	A1*	11/2013	Daily	G06F 8/38 715/763
2013/0325410	A1	12/2013	Jung et al.	
2014/0042136	A1	2/2014	Daniel et al.	
2014/0067333	A1	3/2014	Rodney et al.	
2014/0075342	A1	3/2014	Corlett	
2014/0098094	A1	4/2014	Neumann et al.	
2014/0157579	A1	6/2014	Chhabra et al.	
2014/0207605	A1	7/2014	Allin et al.	
2014/0229316	A1	8/2014	Brandon	
2014/0279177	A1	9/2014	Stump	
2014/0379119	A1	12/2014	Sciacchitano et al.	
2015/0055085	A1	2/2015	Fonte et al.	
2015/0066189	A1	3/2015	Mulligan et al.	
2015/0127480	A1	5/2015	Herrman et al.	
2015/0234377	A1	8/2015	Mizikovsky	

**FOREIGN PATENT DOCUMENTS**

WO	0177781	A2	10/2001
WO	2006086332	A2	8/2006
WO	2007067248	A2	6/2007
WO	2011139630	A1	11/2011
WO	2011140646		11/2011
WO	2011140646	A1	11/2011
WO	2013058764	A1	4/2013
WO	2014152396	A2	9/2014

**OTHER PUBLICATIONS**

Kou, X. Y., S. K. Xue, and S. T. Tan. "Knowledge-guided inference for voice-enabled CAD." *Computer-Aided Design* 42.6 (2010): 545-557.\*

Sharma, Anirudh, et al. "MozArt: a multimodal interface for conceptual 3D modeling." *Proceedings of the 13th international conference on multimodal interfaces*. ACM, 2011.\*

Defining Lead Time for APS Planning; [http://t3.apptrix.com/syteline/Language/en-US/Other/Process/Defining\\_Lead\\_Time.htm](http://t3.apptrix.com/syteline/Language/en-US/Other/Process/Defining_Lead_Time.htm).

"Quartiles." Mathsisfun.com. Web. <<https://www.mathsisfun.com/data/quartiles.html>>. Archive. <<https://web.archive.org/web/20100909011751/http://www.mathsisfun.com/data/quartiles.html>>.

Wu et al. *Interactive 3D Geometric Modelers with 2D UI*, 2002, State University of Campinas, [www.dca.fee.unicamp.br](http://www.dca.fee.unicamp.br), Sao Paulo, Brazil; 2002, 8 pages.

"Upload Your Photos, Print a 3D Model with hyper3D." SolidSmack. <http://www.solidsmack.com/cad-design-news/hyper3d-photo-video-3d-print/>; last accessed on Oct. 13, 2015.

"123D Catch." Autodesk. <http://apps.123dapp.com/catch/>.

Rothganger et al. "3D Object Modeling and Recognition from Photographs and Image Sequences." *Toward Category-Level*

*Object Recognition*. 2006, pp. 105-126, vol. 4170 of the series *Lecture Notes in Computer Science*. Springer Berlin Heidelberg.

Dealer Information Systems Corporation. "Parts Inventory." <http://dis-corp.com/content/agriculture/inventory/parts-inventory>.

eMachineShop. "Emachineshop Features." <http://www.emachineshop.com/machine-shop/Features/page518.html>. Retrieved from: <http://www.solidworks.com/sw/products/3d-cad/manufacturing-cost-estimation-quoting.htm> p. 1: Automatic Manufacturing Cost Estimation Overview; Solidworks; 2015.

Retrieved from: [http://www.gom.com/fileadmin/user\\_upload/industries/touch\\_probe\\_fixtures\\_EN.pdf](http://www.gom.com/fileadmin/user_upload/industries/touch_probe_fixtures_EN.pdf); Application Example: Quality Control, Online Calibration and Validation of Fixtures, Jigs and Gauges. GOM mbH, 2008.

<http://citeseerx.ist.psu.edu/viewdoc/download?doi=10.1.1.194.7785&rep=rep1&type=pdf> Kim, Jin Baek, and Arie Segev. "A web services-enabled marketplace architecture for negotiation process management." *Decision Support Systems* 40.1 (2005): 71-87.

Jaiswal, Ashutosh et al., "Design and Implementation of a Secure Multi-Agent Marketplace", Elsevier Science, pp. 1-23, Jun. 3, 2004; <http://magnet.cs.umn.edu/papers/Jaiswal04cera.pdf>.

<http://www.computer.org/csdl/proceedings/hicss/2005/2268/01/22680038.pdf> Bui, Tung, and Alexandre Gachet. "Web services for negotiation and bargaining in electronic markets: Design requirements and implementation framework." *System Sciences*, 2005. HICSS'05.

[http://www.bridgeline-digital.com/File%20Library/Repository/eCommerce/Sample-eCommerce-RFP-Template\\_Bridgeline-Digital.pdf](http://www.bridgeline-digital.com/File%20Library/Repository/eCommerce/Sample-eCommerce-RFP-Template_Bridgeline-Digital.pdf). Sample RFP Template: Ecommerce Platform, Bridgeline Digital, 2014.

Matchbook, Tealbook, <http://www.matchbookinc.com/> Sep. 28, 2015.

3Diligent, Source Smarter, <http://www.3diligent.com/customer.html>; Sep. 28, 2015.

Dassault Systemes, Brochure, Mar. 24, 2010: New Features Type3ToCatia [http://www.type3.us/content/download/2202/405535/file/New%20Feature\\_Type3ToCatia\\_2010\\_US%20old.pdf](http://www.type3.us/content/download/2202/405535/file/New%20Feature_Type3ToCatia_2010_US%20old.pdf).

Sorpas ("User Manual," Swanted Software and Engineering Aps, 2011 (120 pages)).

U.S. Appl. No. 14/267,447, Aug. 5, 2015, Office Action.

U.S. Appl. No. 14/197,922, Nov. 26, 2014, Office Action.

U.S. Appl. No. 14/197,922, Apr. 27, 2015, Response to Office Action.

U.S. Appl. No. 14/197,922, May 15, 2015, Office Action.

U.S. Appl. No. 14/267,447, Jun. 18, 2015, Response to Office Action.

U.S. Appl. No. 14/263,665, Oct. 8, 2015, Office Action.

U.S. Appl. No. 14/053,222, Jan. 29, 2016, Office Action.

U.S. Appl. No. 14/311,943, Apr. 27, 2016, Office Action.

U.S. Appl. No. 14/486,550, May 26, 2016, Office Action.

U.S. Appl. No. 14/060,033, Jun. 15, 2016, Office Action.

U.S. Appl. No. 14/172,462, Jul. 6, 2016, Office Action.

U.S. Appl. No. 14/053,222, Jul. 29, 2016, Response to Office Action.

U.S. Appl. No. 14/185,204, Jul. 29, 2016, Office Action.

U.S. Appl. No. 14/062,947, Sep. 16, 2016, Office Action.

U.S. Appl. No. 14/060,033, filed Oct. 22, 2013.

U.S. Appl. No. 14/053,222, filed Oct. 14, 2013.

U.S. Appl. No. 14/172,462, filed Oct. 16, 2013.

U.S. Appl. No. 14/062,947, filed Oct. 25, 2013.

U.S. Appl. No. 14/172,404, filed Feb. 4, 2014.

U.S. Appl. No. 14/303,372, filed Jun. 12, 2014.

U.S. Appl. No. 14/185,204, filed Feb. 20, 2014.

U.S. Appl. No. 14/195,391, filed Mar. 3, 2014.

U.S. Appl. No. 14/246,254, filed Apr. 7, 2014.

U.S. Appl. No. 14/229,008, filed Mar. 28, 2014.

U.S. Appl. No. 14/197,922, filed Mar. 5, 2014.

U.S. Appl. No. 14/263,665, filed Apr. 28, 2014.

U.S. Appl. No. 14/267,447, filed May 1, 2014.

U.S. Appl. No. 14/311,943, filed Jun. 23, 2014.

\* cited by examiner

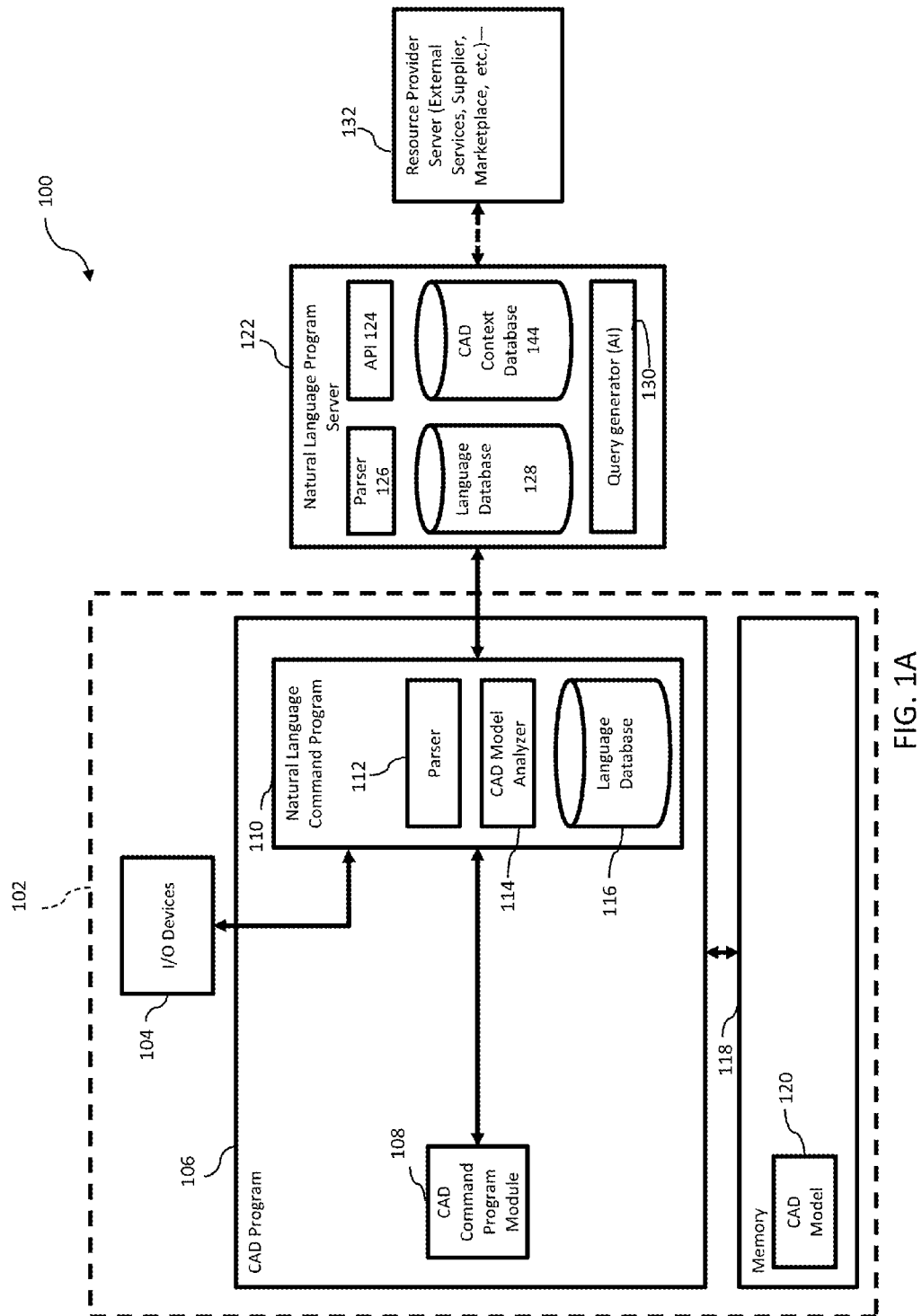


FIG. 1A

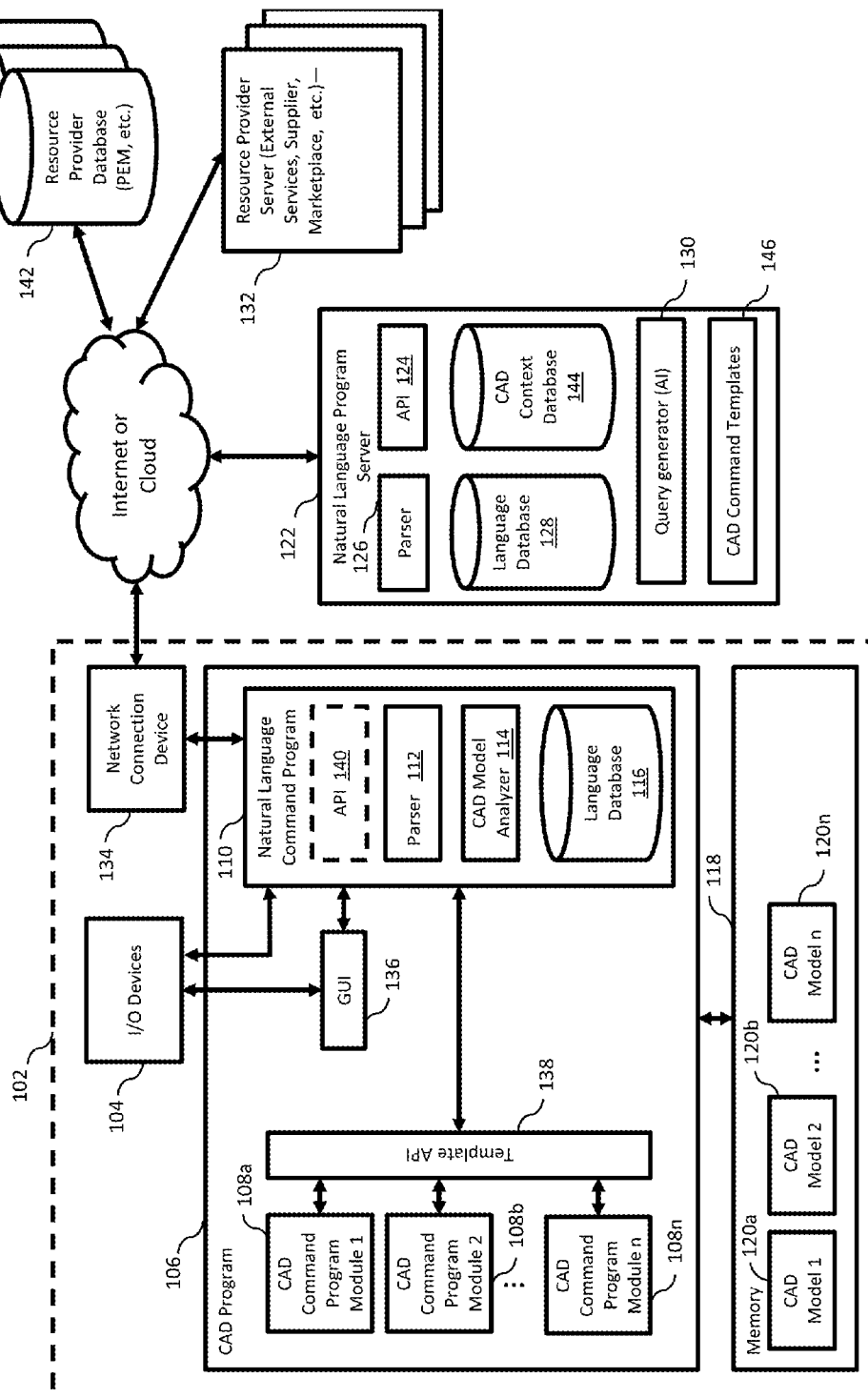


FIG. 1B

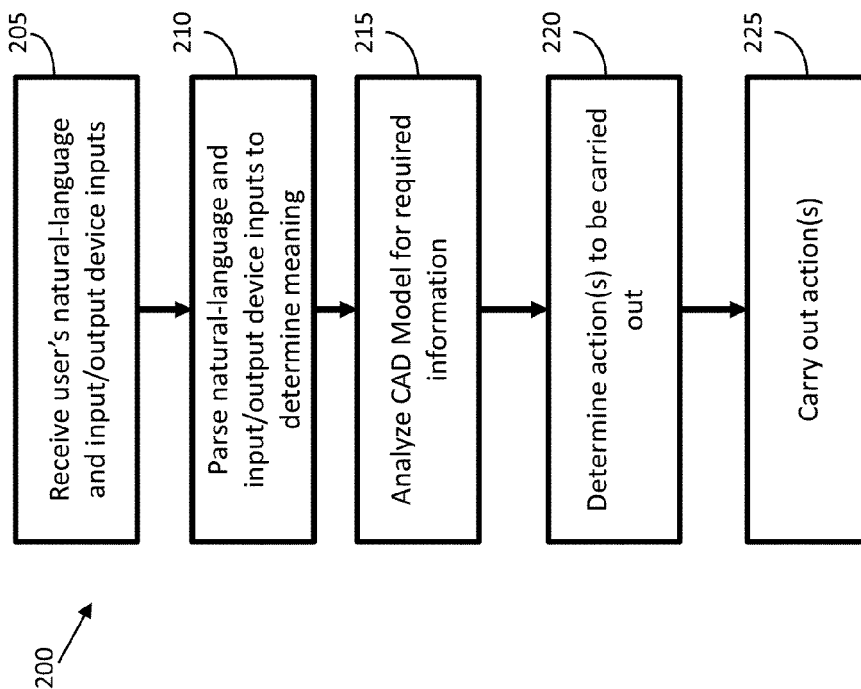


FIG. 2

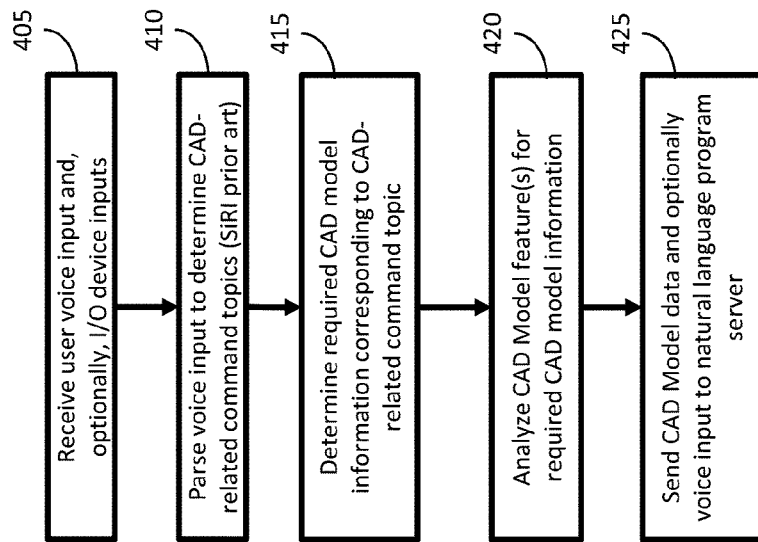


FIG. 4

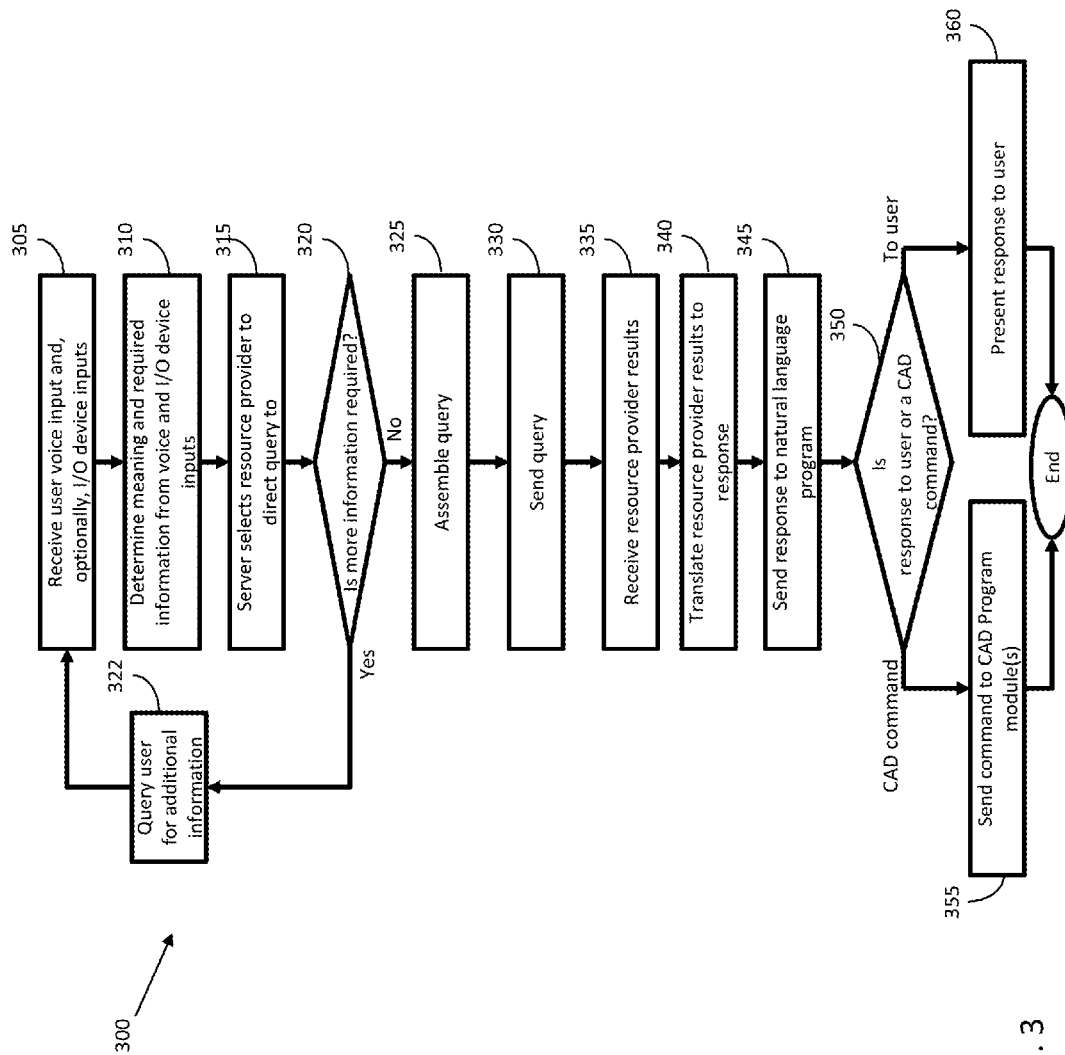


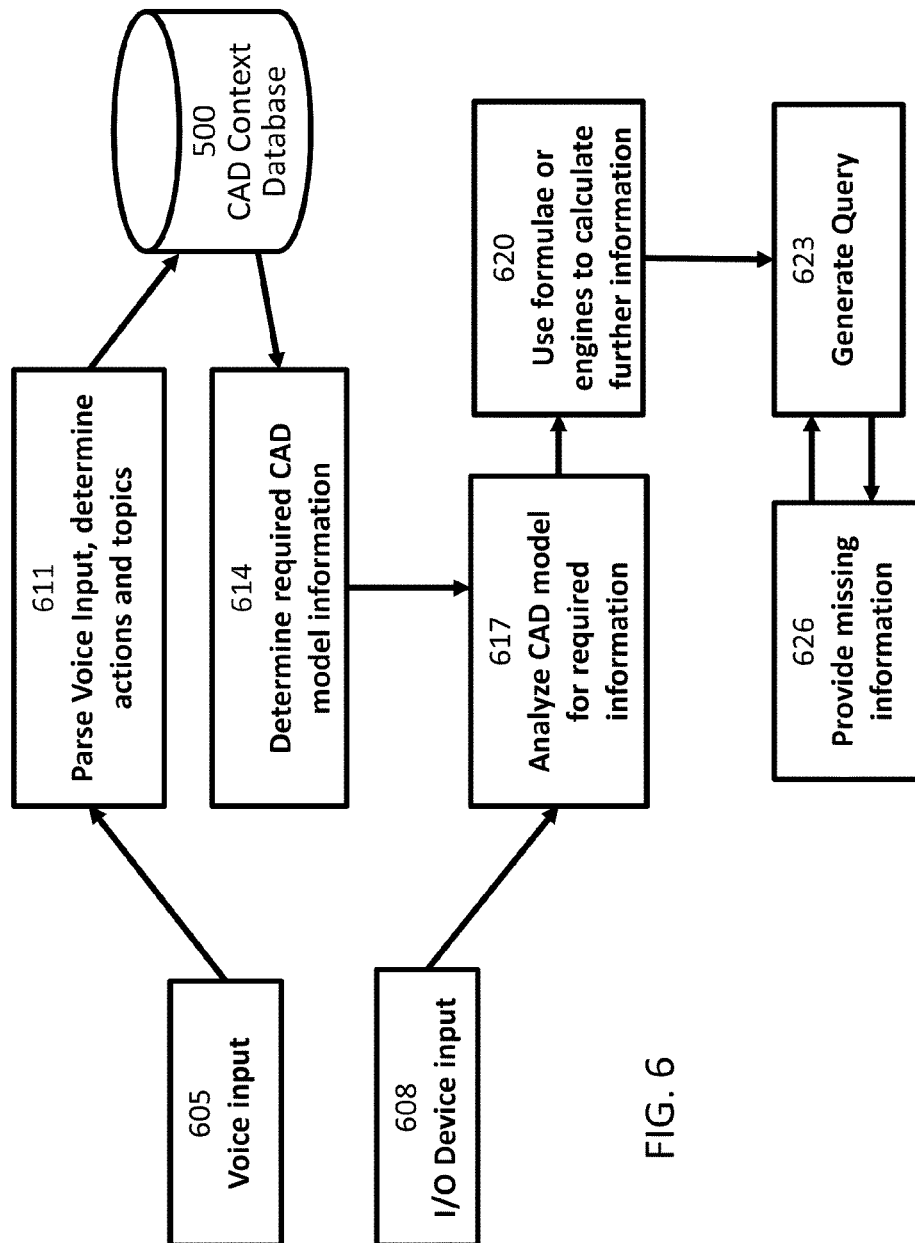
FIG. 3

CAD Context Database 500

Required Information												Search Address			
Command Topic	Part Material	Min/Max Thickness	Surface Area	Hole Diameters	Overall Part Dimensions (L x W x H)	Flat Boundary Dimensions	Formula based calc?	McMaster Carr	PEM	Metal Depot	etc...				
Screw	Yes	Yes	X	Yes	X	X	Yes	X	Yes	X	...				
Bolt	Yes	Yes	X	Yes	X	X	Yes	Yes	X	X	...				
Nut	Yes	X	X	Yes	X	X	X	Yes	Yes	X	...				
Sheet Metal	Yes	Yes	Yes	X	Yes	Yes	X	X	X	Yes	...				
Rip	X	Yes	X	X	X	Yes	Yes	X	X	X	...				
Bend	Yes	Yes	X	X	X	Yes	Yes	X	X	X	...				
Rivet	Yes	Yes	X	Yes	X	X	Yes	X	X	X	...				
Seam Weld	Yes	Yes	X	X	X	X	Yes	X	X	X	...				
etc...	...	...	...	...	...	...	...	...	...	...	...				

FIG. 5





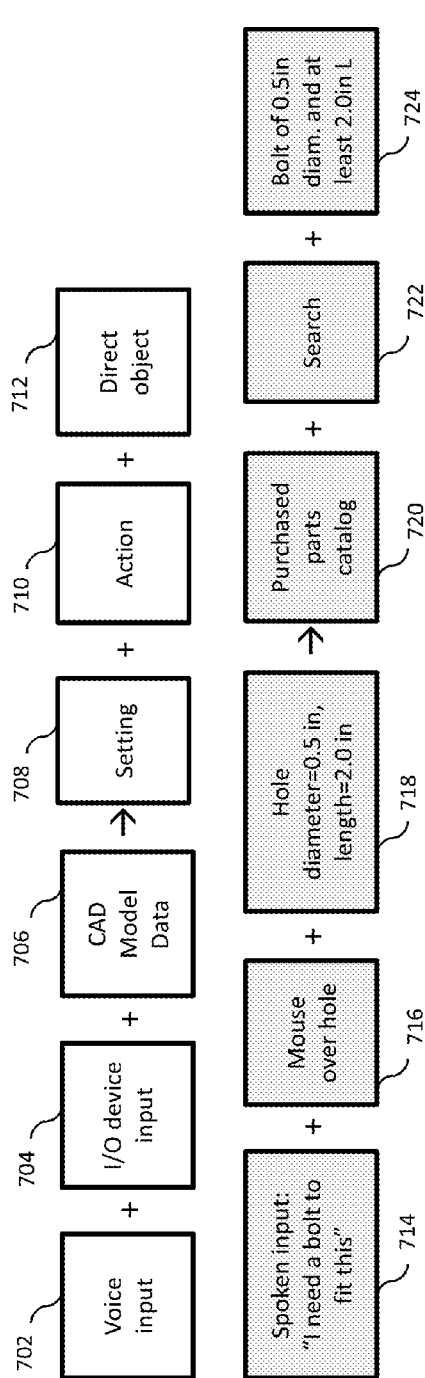


FIG. 7A

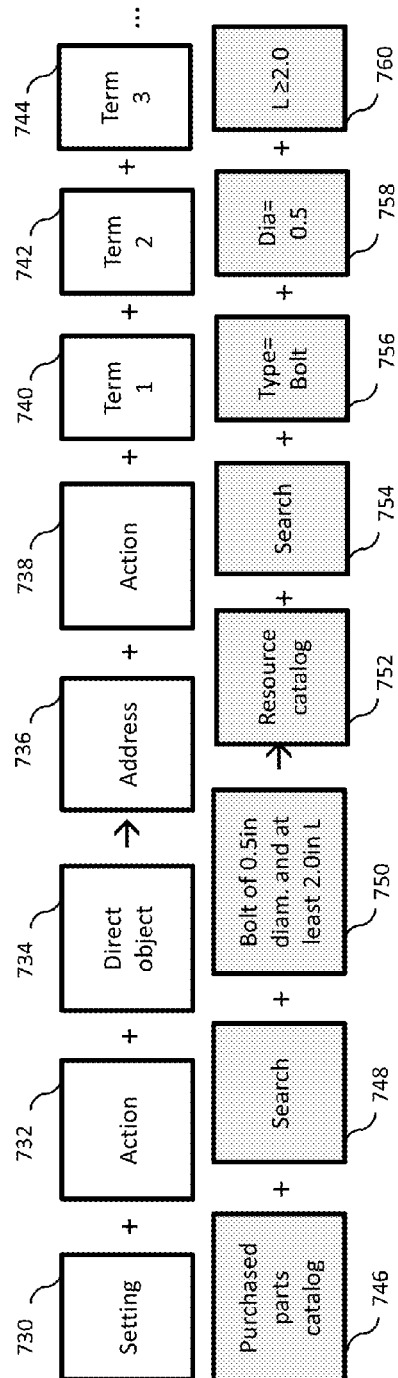


FIG. 7B

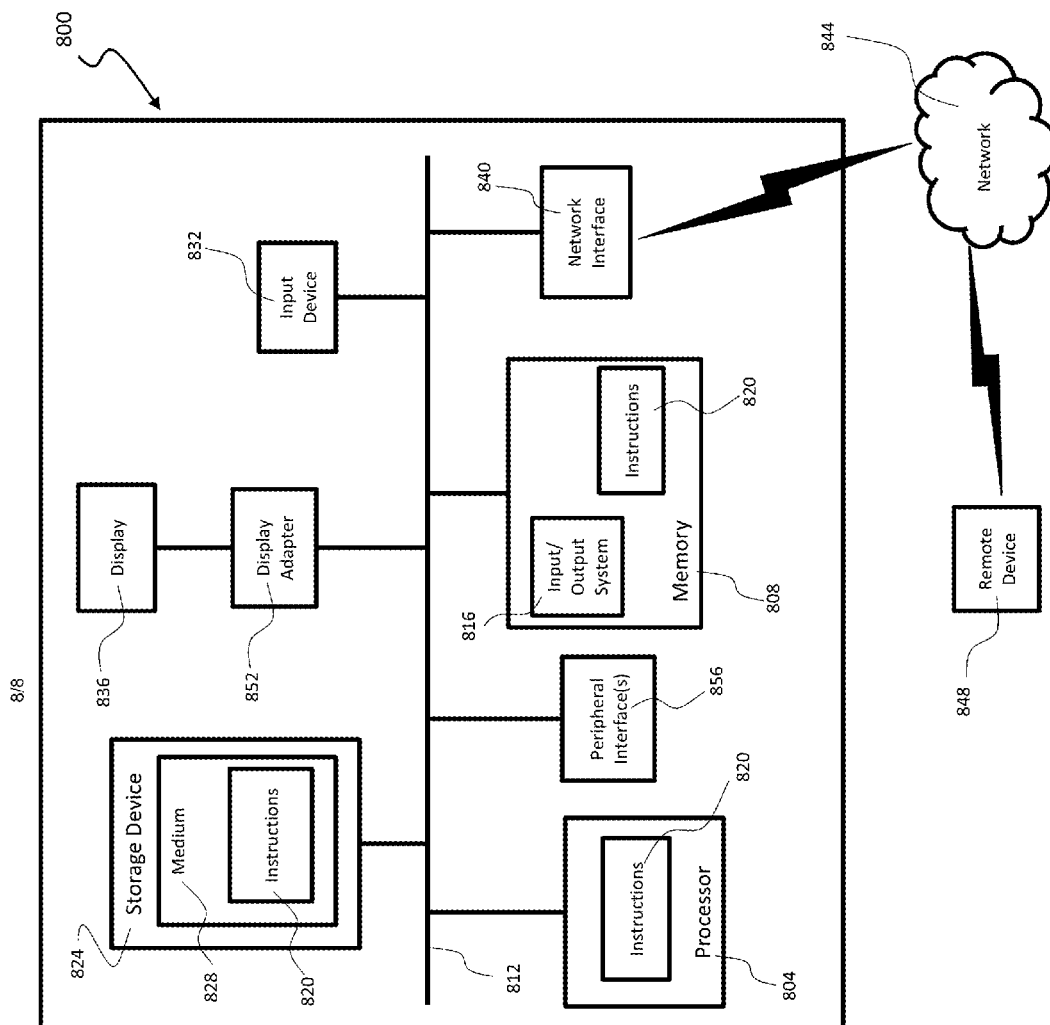


FIG. 8

1

## NATURAL LANGUAGE USER INTERFACE FOR COMPUTER-AIDED DESIGN SYSTEMS

### FIELD OF THE INVENTION

The present invention generally relates to the field of computer-aided design. In particular, the present invention is directed to natural language user interfaces for computer-aided design systems.

### BACKGROUND

Computer-aided design (CAD) programs allow designers to create computer models of products to be manufactured. Such programs can be incredibly complex and take extensive training and use before a designer becomes efficient in the use of the program. Natural language interfaces have been proposed as a means for simplifying many different human-machine interactions. While such programs are having increasing success in terms of adoption for general use, for example, the ability to ask simple questions like weather or direction queries of a mobile phone interface (see, e.g., US Pub. No. 2012/0016678, entitled "Intelligent Automated Assistant," which is incorporated by reference herein in its entirety), such systems still do not provide an adequate or user-friendly interface for many complex systems, such as CAD programs, that employ specialized language and wherein context-specific terminology has multiple meanings and/or multiple defining parameters that vary with the context.

While attempts have been made at providing natural language interfaces for CAD systems (see, e.g., US Pub. No. 2009/0058860, entitled "Method For Transforming Language Into A Visual Form," which is incorporated by reference herein in its entirety), such systems in themselves have been overly complex and have not produced results that have led to general application and use.

### SUMMARY OF THE DISCLOSURE

In one embodiment, a natural language interface system is provided for a computer-aided design (CAD) system, wherein the CAD system comprises a CAD program containing at least one CAD command program module for executing CAD commands with respect to a CAD model stored in an associated memory in response to user inputs communicated through one or more I/O devices. The natural language interface system comprises a natural language command program module communicating with the I/O devices and with a natural language program server module. The I/O devices include auditory input and output devices. The natural language command program module comprises a first parser sub-module and first language database for initially parsing natural language inputs received through the auditory I/O devices, a CAD model analyzer for interrogating the CAD model to return CAD model information as determined by the initial parsing. The natural language program server module comprises a second parser sub-module and at least a second language database for further parsing natural language inputs received through the auditory I/O devices as communicated from the natural language command program module, a CAD context database containing predetermined information categories and information search locations corresponding to pre-identified command topics corresponding to CAD specific natural language commands; and a query generator sub-module for generating queries directed to resource providers for return-

2

ing required information based on parsed natural language inputs and corresponding information identified in said CAD context database.

In another embodiment a method for providing a natural language interface for a computer-aided design (CAD) system comprises steps of receiving a user voice input, parsing the user voice input, determining a meaning for the parsed user voice input, the meaning including command topics, identifying required information and corresponding location information for the required information contained in a CAD context database and associated with the command topics, assembling a query for additional information based on the meaning and the required information, sending the assembled query to a corresponding information location, receiving queried information from the corresponding information location, translating the received information into a response, determining if the response comprises a command to a CAD program module or a response to be provided to the user, and sending the command to at least one CAD program module or the response to the user based on the previous determining step.

### BRIEF DESCRIPTION OF THE DRAWINGS

For the purpose of illustrating the invention, the drawings show aspects of one or more embodiments of the invention. However, it should be understood that the present invention is not limited to the precise arrangements and instrumentalities shown in the drawings, wherein:

FIG. 1A is a block diagram schematically illustrating a system according to one embodiment of the present invention;

FIG. 1B is a block diagram schematically illustrating an alternative system according to another embodiment of the present invention;

FIG. 2 is a flow diagram illustrating a high level method according to an embodiment of the present invention;

FIG. 3 is a flow diagram illustrating another embodiment of a method according to the present invention with more detail;

FIG. 4 is a flow diagram illustrating a sub-step within the embodiments shown in FIG. 2 or 3;

FIG. 5 schematically represents a partial example of information contained within a context database according to an embodiment of the present invention;

FIG. 6 is a flow diagram illustrating one possible embodiment of a query generation algorithm according to the present invention;

FIGS. 7A and 7B are block diagrams schematically illustrating another exemplary embodiment of query generating algorithm, wherein FIG. 7A represents an exemplary parsing algorithm and FIG. 7B represents an exemplary query algorithm; and

FIG. 8 is a block diagram schematically illustrating exemplary hardware implementations of embodiments of the present invention.

### DETAILED DESCRIPTION

Aspects of the present invention include techniques, methods, hardware and software for providing natural language interfaces in and for computer-aided design (CAD) systems. Exemplary embodiments are described herein below and illustrated in the accompanying drawings. It will be understood by those skilled in the art that various changes, omissions and additions may be made to that which

is specifically disclosed herein without departing from the spirit and scope of the present invention.

As used herein, a structure may be an object or part having a particular geometry, and a computer model may be a virtual representation of a structure and may be created using an appropriate CAD system or program. A designer may be the designer of a computer model, a purchaser, an agent of the purchaser, and a consumer, a home user, or a customer, among others. Examples of a structure include a piece of sheet metal, a solid cube, a cylindrical pipe, an injection molded plastic toy, an article of clothing such as a shirt made of cotton, and an assembly of various parts such as a vehicle, among others. A project (or design) may refer to a CAD model of a part or an assembly of CAD models of parts that may be a virtual representation of a particular structure and may be created using one or more appropriate CAD systems or programs.

One or more aspects of the present invention can be implemented in any of a wide variety of manners, such as within a single computing device or by two or more networked computing devices, among others. In some embodiments, functionalities of systems described herein may be integrated into computer modeling programs directly via add-on software.

As would be apparent to one reasonably skilled in the art, aspects and embodiments of the invention may be applied to any number of manufacturing types, including but not limited to the manufacture of apparel and sheet metal products among others. In the case of sheet metal and apparel, designers use CAD systems to design their products, using sheets of flat material for manufacture. Design data, such as material choice, precise dimensions, or locations of additional features may be embedded within the digital design. Designers may choose different metals or fabrics (including non-woven materials such as leather) depending on the strength and other inherent properties of the material, which affects what manufacturing methods may be necessary to work the material. Purchased components (in some cases, identical purchased components) may be added to the design. CAD programs may be used to visualize the shape of the finished product. In both sheet metal and apparel manufacturing the sheet (metal or fabric) may be cut or stamped by a variety of methods using computerized machines. Units are moved from station to station during manufacture. Where sheet metal is connected by rivets or welding, sheet fabric is connected by stitching or gluing. Surface finishes may be applied to both; both may be painted, silk-screened, or otherwise covered with a protective substance. While sheet metal and fabric apparel products have commonalities as discussed above, it will be appreciated by those skilled in the art that other design and manufacturing types which may or may not share many of the same attributes are also amenable to application of embodiments of the present invention.

Referring first to FIG. 1A, an exemplary embodiment of a system **100** in accordance with the teaching of the present invention is described. In one implementation, system **100** comprises one or more computing devices with appropriately networked and/or communicating modules. For example, sub-system **102** may comprise a computer, other computing device or other system as may be devised by a person of ordinary skill for executing functionalities as described herein based on appropriately coded instructions. I/O devices **104** include language-based I/O devices such as a microphone and speakers, as well as other I/O devices such as mouse, keyboard, touch pad or touch screen. CAD program **106** and memory **118** are also included in sub-

system **102**. CAD program **106** includes, in addition to conventional CAD system functionality, natural language command program **110**. Natural language command program **110** comprises parser **112**, CAD model analyzer **114** and language database **116**. CAD model **120** typically resides in a memory device, such as memory **118** although the memory need not be configured as a part of the system per se, but may be functionally remote and communicate with the system through an appropriate network.

CAD model analyzer **114** functions as a form of interrogator that interrogates the CAD model to return CAD model data as called for by various program functions. In some embodiments, other system modules may include and/or maintain such an interrogator for interrogating information from a CAD model. Additionally or alternatively, natural language program server module **122**, and/or resource provider server module **132** may contain such an interrogator, for example, as a portion of or add-on to a CAD program. CAD model analyzer **114** may analyze a CAD model and output data that may be received and used by natural language command program module **110** or other system modules. Illustrative embodiments for such an analyzer/interrogator may be found in U.S. patent application Ser. No. 14/060,033, filed on Oct. 22, 2013, and titled "AUTOMATED FABRICATION PRICE QUOTING AND FABRICATION ORDERING FOR COMPUTER-MODELED STRUCTURES", which is incorporated by reference herein for its teachings of extracting data from computer models, and U.S. patent application Ser. No. 14/282,773, filed on May 20, 2014, and titled "METHODS AND SOFTWARE FOR ENABLING CUSTOM PRICING IN AN ELECTRONIC COMMERCE SYSTEM", which is incorporated by reference herein for its teachings of particular interrogator engines.

CAD program module **106** may comprise any of the modules in a conventional CAD system or program that govern one or more functions of the CAD program as would be understood by persons of ordinary skill in the art. Examples of other CAD system modules, not shown, may include: create new item module, select material module, bend module, weld module or cut module. However, natural language command program module **110** is in addition to the conventional modules of the CAD system or program.

Parser **112** parses content of spoken commands received through I/O devices **104** and communicates with language database **116** to determine relevant portions of the spoken command for formulating a query as discussed in more detail below. CAD model analyzer **114**, like interrogator, searches for specific information in CAD model **120** and communicates with natural language server module **122**.

Natural language program server module, which may be remotely located, may comprise a high capacity server/database to assist in parsing any natural language commands that cannot be parsed through resident module **110**. Thus, natural language program server module **122** includes parser **126**, which is similar in function to parser **112** but more powerful, and API **124**, which would be used to translate commands into required syntax for other system modules, for example, to communicate with resource provider server module **132**. Language database **128** is a larger, more powerful version of database **116**, and may comprise multiple specialized, plurally accessible library-type databases. Query generator **130** may comprise the artificial intelligence for query generation as described herein below (see, for example, FIGS. 6, 7A and 7B) and thus may comprise a processor and memory of its own, as well as other associated hardware and software suited for its query generation func-

5

tion. CAD context database **144** contains CAD specific information as shown in FIG. **5** and described in more detail below.

Resource provider server module **132** provides external services and/or information when called for by module **122**. For example, when information needed to respond to a query resides outside of the CAD system and natural language program server module **122**, automated searching of appropriate databases is initiated, the databases being supplied as resource provider server modules **132** in order to provide information from suppliers, marketplaces, and other external services. In some examples, resource provider server module **132** is an external service supplier marketplace database, either a source of information or standalone entity that will perform calculations.

In operation a natural language command plus any additional information concomitantly entered is received through I/O devices **104** and directed to natural language command program module **110**, which then parses the command, breaking it into pieces and identifying, using language database **116**, the meaning of the command. Information that is identified as being contained within CAD model **120** is analyzed and retrieved by CAD model analyzer **114** by interrogating the CAD model. If for some reason natural language command program module **110** is unable to determine the meaning of a command, it will send an audio file to natural language program server module **122** to be further parsed by parser **126**, accessing language database(s) **128**. Also at this point, CAD context database **144** communicates with parser **126** to determine what information must be pulled from CAD model **120**. Pulled information is sent back through CAD model analyzer **114** to server module **122** and query generator **130** generates a query based on retrieved information.

CAD context database **144** supplements language databases **116** and **128** with CAD specific contextual information that is accessed, for example, when parser **126** is unable to parse a command by access to the more general language databases or if more than one contextual meaning is identified. For example, CAD context database **144** contains information necessary to identify a bolt as a purchase part that is associated with a nut, to separate it from other general language context meanings (i.e., to leave quickly or a lightning bolt). CAD context database **144** also contains information to direct natural language server program module **122** to query resource provider modules **132** when supplier-type or other externally provided information is needed for query completion.

If the query can be executed by the CAD program without further information or data inputs, then the command is translated to the CAD program through natural language command program module **110**. However, when the query requires additional, non-resident information, the query is then translated by API **124** and sent to resource provider server module **132** for answer. When the response is returned from resource provider server module **132**, API **124** translates the response into a format that can be used by the CAD program module and it is sent back through natural language command program module **110**, which delivers an output, such as an auditory output, through I/O devices **104** and/or instructs the CAD command program module **108** to execute the command.

With reference to FIG. **1B**, a further alternative system is described. As will be seen, the basic components of FIG. **1A** are carried over to the embodiment of FIG. **1B**. Added components include network connection device **134** that permits communication with an network, the Internet or

6

information stored in a cloud. Communication through this path may be with natural language program server module **122** as previously described, as well as multiple resource provider server modules **132** and direction with resource provider databases **142**.

In this embodiment, CAD program **106** also includes plural CAD program modules **108a, b . . . n** communicating with natural language command program module **110** through template API **138**. Template API **138** is used to translate commands and other information coming back from the natural language command program module **110** into a command that can be used by the particular CAD program. GUI **136** is also added, optionally communicating between I/O devices **104** and natural language command program module **110** to facilitate interaction with the user. Optional API **140** inside natural language command program module **110** translates and facilitates communications between the various sub-modules.

Within natural language program server module **122**, CAD command templates **146** are used in conjunction with template API **138** to send instructions in the language that the CAD program will understand. Thus, CAD model **120a, b . . . n** is to be changed using a command program module. Template API **138** translates a command in a template form to a command that is actually understood by the module.

The following prophetic examples further illustrate operation of embodiments of the system thus described. As is typical in natural language interfaces, the "system" is assigned a name to be spoken by the user to initiation language recognition and parsing, and to distinguish commands from other spoken words. Any suitable name may be assigned. In this case, for illustration purposes only, the assigned name is "Nalcop," representing natural language command program module **110**.

#### EXAMPLE 1

In operation, a user clicks a hole and says, "Nalcop, I need bolts to fit this hole." Nalcop parses the command with parser **112** and determines that "this hole" refers to a highlighted feature in the displayed CAD model. Natural language command program module **110** then uses CAD model analyzer **114** to gather all data related to the hole from CAD model **120**. Then, it sends the data plus message to natural language command program server module **122**, where the natural language statement and CAD model data is further parsed (if necessary). Query generator **130** creates a search command using the parsed statement and the CAD model data, and searches resource provider server modules **132** or databases **142** for bolts of the correct diameter and correct length that are compatible with the material in which the hole is located. That data is returned to natural language command program module **110**, which displays it in GUI **136**.

#### EXAMPLE 2

In operation, a user says, "Nalcop, this shelf needs to hold 40 pounds." Natural language command program module **110** cannot initially parse this command, so it sends a voice record to natural language program server module **122**. Server module **122** parses the statement and determines that the user's statement is a request to calculate whether the structure can hold 40 pounds. Based on this determination, made using parser **126**, language database **128** and CAD context database **144**, server module **122** sends natural language command program module **110** instructions to

7

analyze the entire CAD model (to get material, thickness, and angles) and to ask the user which way is up (e.g. necessary to know directionality to perform the analysis) and what factor of safety the user would like to use (e.g., necessary to know how sure the user wants to be that the shelf will hold 40 pounds). Natural language command program module 110 thus poses the required questions through GUI 136 and/or I/O devices 104 and waits for a response from the user. Required CAD model data is accessed by CAD model analyzer 114, combined with user inputs in response to stated questions and transmitted to server module 122. API 124 puts the information in the correct format and sends the data to a resource provider server module 132 which can perform a stress (statics) analysis on a model of that shape using that material. If the analysis determines that the aluminum brackets supporting the shelf will not support the weight, server module 122 sends a "no" answer to natural language command program module 110, which communicates the answer to the user through GUI 136 and/or I/O devices 104. Such communication may take the form of a statement delivered through system speakers. The user may choose to respond to the "no" answer with a further question, such as "Well Nalcop, what will work?" In such a case, that question is parsed to be a request for design modifications. Server module 122 sends common fabrication material options to resource provider server modules 132 to determine whether using a different material in the bracket will work. For purposes of this example, assume stainless steel would be sufficient to hold the weight. In this case, server module 122 may also send different bracket thicknesses, but using the original material (aluminum), to resource provider server modules 132. Assume it is determined that doubling the thickness in the original material will also work. Server module 122 then sends natural language command program module 110 information that the CAD model as it exists will not hold 40 pounds, but stainless steel or double-thickness aluminum will. Natural language command program module 110 then prompts the user through I/O devices 104 and/or GUI 136 to indicate whether he wants to use stainless steel or double the thickness of aluminum. The user selection is sent back to server module 122, which fills out a CAD Command Template 146, which is sent back through natural language command program module 110 to template API 138, which instructs CAD program module(s) 108a, b . . . n to make the change.

Operation of embodiments of the present invention may be further understood with references to the flow diagrams in FIGS. 2, 3 and 4. FIG. 2 illustrates a high level method comprising five general steps. Step 205 comprises receiving user natural language and input/output device inputs, in other words the user speaks and may also use keyboard or mouse to highlight. For example, a user may say "I need a bolt to fit this hole" while using the mouse to identify the hole and natural language command program module 110 will appropriately associate the two different types of inputs based on context and proximity in time. For example, the context of the parse can include recognition of keyboard/mouse commands such as "make this <highlighted with mouse>, aluminum." In a further alternative, distinct commands may be assigned to correspond to the mouse or keyboard commands so that context is not required, for example, predetermining that spoken "this" plus an immediate physical I/O action go together.

Step 210 comprises parsing the natural language inputs to determine meaning and required information. Step 215 comprises analyzing CAD model 120 for required informa-

8

tion, typically using CAD model analyzer 114. Step 220 comprises determining actions to be carried out, for example determining results using resource provider server modules or databases as described above. Step 225 comprises carrying out the action or actions or delivering results to the user.

More detailed method steps are described in connection with the embodiment shown in FIG. 3. In this embodiment, a first step 305 comprises receiving a user voice input and optionally input/output device input as described. In step 310 the meaning of voice and I/O device inputs is determined. More detail on this step is provided in the discussion of FIG. 4 below. Next, at step 315, server module 122 selects a resource provider server module 132 to which the query is to be directed.

Step 320 requires a determination of whether more information is required. If YES, step 322 generates a query to the user to provide additional information and program flow returns to step 305 upon information receipt. If NO, program flow continues on to step 325. In step 325 the query is assembled and then sent in step 330. In step 335 resource provider results are received from either or both of the resource provider server module or databases. Step 340 comprises translating the resource provider results to a response in a form useable by the CAD system. In step 345, the translated response is sent to the natural language command program module.

Step 350 requires another determination, in this case whether the returned response is a CAD command or a response to be directed to the user. In other words, is the response something that is intended to seek feedback or find answer from the user, or is it really a CAD command that should be going into the CAD program for execution? If a CAD command, it is routed at 355 for execution by a CAD program module; if a user response, it is routed at 360 to an appropriate I/O device for communication with the user.

Turning now to FIG. 4, more detail of the command meaning determination in step 310 above is provided. The process in this embodiment begins at step 405 with receiving user voice input and optionally I/O device input, in this case the same as step 305. Next, in step 410, the voice input is parsed to determine the meaning as is generally understood by persons skilled in the art of natural language program interfaces. In step 415, required CAD model information corresponding to as determined CAD-related command topics is further determined. In step 420, CAD model features are analyzed (for example, by CAD model analyzer 114) for required CAD model information. Thereafter, in step 425, CAD model data and optionally voice input are sent to the natural language program server module for further action as elsewhere described herein.

FIG. 5 illustrates exemplary contents of CAD context database 500 in an abbreviated form suitable for representation within the drawings of a patent application. As will be appreciated by persons of ordinary skill, the contents of a CAD context database as described herein will in practice be substantially more voluminous. In the examples illustrated in the figures provided herewith, CAD context database 500 is located within natural language program server module 122. However, it may be otherwise located without departing from the scope of the invention.

As illustrated in the example of FIG. 5, CAD context database 500 comprises a series of command topics in a first column and at least two super-columns thereafter that identify required information and corresponding search addresses or locations for information corresponding to each command topic. In this example, a "Yes" entry in any column indicates applicable or required information, and an

“X” entry indicates that information is not required or not applicable. The required information super-column indicates each specific type of information that CAD analyzer 114 must pull from CAD model 120 to respond to a command related to the indicated topic or which must be obtained from a resource provider or other third party source. The search address super-column indicates applicable sources associated with each topic from which the required information may be potentially obtained. In this example, for illustration purposes, the search address columns have been populated with a number of well-known industrial suppliers—McMaster Carr, PEM and Metal Depot—but any source of information appropriate for the particular structures to be made may be populated in the search address columns. Also, when formula-based calculations are required, as explained in further detail below, the source of the formula may be a memory location or calculation engine located within the system or internally networked, in addition to third party or cloud sources.

The information thus provided by CAD context database 500 is used to generate search queries, for example as shown in FIG. 6. The flow diagram of FIG. 6 illustrates one possible algorithm for query determination according to embodiments of the present invention, which will be illustrated by

the required information. In this example, extracted information may be diameter=0.5 in, thickness=1.5 in to 2.0 in, and material=aluminum. Once required information is returned, at step 620, formulae or engines are accessed and applied as needed to calculate further required information. In this example, max bolt diameter might be calculated at 0.95 in and minimum bolt length at 1.1 in.

With all necessary information in hand, a query is generated at step 623. A hypothetical query for this example may include the following fields and corresponding information: Address: McMaster Carr catalog; Action: search—Term 1: “bolt”—Term 2: “diameter=0.950 in”—Term 3: “length>1.65 in to 2.2 in”—Term 4: “material=aluminum”. To the extent any information is determined to be missing, it is provided at step 626. For example, the length of fitting parts could be much longer than thickness of material, leading to many possible fitting results, in which case the natural language command program module will ask the user “What length part do you want?”

Table 1 below shows how the initial search request—“Nalcop, can you find a bolt to fit the selected hole?”—is parsed and the associated program actions and other associated events that flow from the request.

TABLE 1

Parsed Voice Input I/O Device Association	“Nalcop”	“can you find”	“a bolt”	“to fit”	“the selected”	“hole?”
	N/A	N/A	N/A	N/A	“selected” = identify I/O device input for selected feature	N/A
Program Actions and Topics	“Nalcop” = Activate natural language program interface	“you find” = Action will be a search	“bolt” = Recognize CAD Context Term; Retrieve Term-Specific parameters for search from CAD Context Database	Identify selected feature and determine associated parameters (e.g. hole diameter, depth & surrounding material) Construct query: “fit . . . selected hole” [verb + direct object] = correlate feature parameters (e.g. hole diameter, depth & surrounding material) with CAD Context Term Specific Parameters (e.g. bolt diameter, length & material) and other purchased parts compatibility data.		
CAD Context Database Interaction	N/A	N/A	Supply Term-Specific Parameters (for bolt, e.g., diameter, length, material)	N/A		N/A
Resource Provider Extension Actions and Topics	N/A	Search	Address = McMaster Carr catalog  Search term = bolt	Required corresponding CAD-interrogated information used to narrow search (e.g., Search term = diameter of hole; Search term = material; Search term = thickness of material)		

two examples with reference to FIG. 6 and Table 1 below. In step 605, a voice input is provided, such as “Nalcop, can you find a bolt to fit the selected hole?” Simultaneously or at a time in close proximity to the voice input, a device input is also provided in step 608. This device input may, in this example, be mouse clicking on a hole in the displayed structure from the CAD model. Next, at step 611 the voice input is parsed to determine actions, topics and required information. In this example, bolt as a topic returns needed information such as diameter, length, and material. This information is returned from CAD context database 500 as described above.

Based on information returned from CAD context database 500, at step 614, a determination is made as to the required CAD model information. In this example, required CAD information includes hole diameter, the material, and thickness of material at the hole location. With this information, at step 617, the CAD model is analyzed to extract

A second example follows that illustrates a variation of parameters when the request is for a stud rather than a bolt: 605 Voice Input—“Nalcop, can you find a stud to fit the selected hole?”

608 I/O Device Input—Mouse clicks on a hole

611 Parse Voice Input and determine actions and topics (Stud=diameter, length, material) by accessing CAD Context Database 500

614 Determine required CAD model information (CAD information=diameter of hole, thickness of material, material)

617 Analyze CAD model for required information (Diameter=0.25 in Thickness=0.090 in Material=Aluminum)

620 Use formulae or engines to calculate further information (Diameter+/-0.10 in Thickness=1-0.007 in)

623 Generate Query Addresses (PEM catalog Action: search—Term 1: “stud”—Term 2: “diameter=0.15 in to 0.35 in”—Term 3: “thickness=0.083 in to 0.097 in”—Term 4: “material=aluminum”)



## 11

626 Provide missing information (After query is executed, the length of the stud can be variable and independent of the part being analyzed, leading to many possible choices. NLCP Module 110 asks, "Is there a specific length stud you want?" This information is then added to the query as Term 5 and the query is executed again)

FIGS. 7A and 7B illustrate further alternative parsing and query algorithms, respectively, according to alternative embodiments of the invention. In each figure there are generic steps along the top row and a specific example in the boxes of the bottom row. In this alternative parsing algorithm there is voice input 702 plus I/O device input 704 plus CAD model data 706 that is the basis for output setting 708 plus action 710 plus direct object 712. The corresponding specific examples are, respectively, the voice input of natural language command program module 110 is "I need a bolt to fit this" 714 and mousing over the hole as I/O device input 716 plus CAD model data the hole diameter is half an inch and length is two inches 718, is the basis for a setting of purchased parts catalog 720, an action of search 722, and then the direct object or the search terms is "bolt of half an inch diameter and at least two inches length" 724.

The setting, action and object thus determined forms inputs to the query algorithm shown in FIG. 7B, wherein the setting 730 plus action 732 plus direct object 734 generate an address 736 plus action 738 plus search term(s) 740-744. These generic algorithm steps correspond, in this specific example, to, respectively, an actual query of purchased parts catalog 746 plus search 748 plus Bolt of 0.5 in diameter and at least 2 in length 750, provides a specific address of a resource catalog 752, a specific action of the search 754 and three search terms 756, 758 and 760 that come out of the direct object.

In one further embodiment, a local sub-server may be provided with specialized language databases that apply only to a group of designers so that the group may create or use their own individualized glossary commands and terms that might not be used by others outside the group and thus would not parse correctly. This would allow, for example, the users of that group to drop common adjectives from names when all parts have that name. For example, if all bolts were red, it would not be necessary for users within the identified group to specify a red bolt because the system would know the bolt color was red unless otherwise stated.

In another embodiment, a voice recognition sub-module may be included within natural language command program module 110 so that commands can be locked out from unrecognized voices to permit only authorized users to edit the CAD model. For example, such functionality may help to prevent untrained users from changing the CAD model inadvertently. Also, further functionality may be added to permit response by the system in natural language to questions about why a specific command or operation is not working. For example, if an initial command comprises a request to add a steel bolt to an aluminum structure and the system does not allow it because steel fasteners pull through the aluminum, the natural language command program module 110 would respond with an error message or say "this won't work" in audible tone all of the words—"this won't work for these reasons." This could be very helpful to users, especially for those people learning as they make mistakes and understand why it's wrong not just that it's wrong.

Another alternative embodiment may present help menu material tutorials as a natural language response, effectively reading the manual, so that, for example, the user may

## 12

concentrate on the actions necessary with the keyboard and mouse without diverting his eyes to read from the screen.

It is to be noted that any one or more of the aspects and embodiments described herein may be conveniently implemented using one or more machines (e.g., one or more computing devices that are utilized as a user computing device for an electronic document, one or more server devices, such as a document server) programmed according to the teachings of the present specification, as will be apparent to those of ordinary skill in the computer art. Appropriate software coding can readily be prepared by skilled programmers based on the teachings of the present disclosure, as will be apparent to those of ordinary skill in the software art. Aspects and implementations discussed above employing software and/or software modules may also include appropriate hardware for assisting in the implementation of the machine executable instructions of the software and/or software module.

Such software may be a computer program product that employs a machine-readable storage medium. A machine-readable storage medium may be any medium that is capable of storing and/or encoding a sequence of instructions for execution by a machine (e.g., a computing device) and that causes the machine to perform any one of the methodologies and/or embodiments described herein. Examples of a machine-readable storage medium include, but are not limited to, a magnetic disk (e.g., a conventional floppy disk, a hard drive disk), an optical disk (e.g., a compact disk "CD", such as a readable, writeable, and/or re-writable CD; a digital video disk "DVD", such as a readable, writeable, and/or rewritable DVD), a magneto-optical disk, a read-only memory "ROM" device, a random access memory "RAM" device, a magnetic card, an optical card, a solid-state memory device (e.g., a flash memory), an EPROM, an EEPROM, and any combinations thereof. A machine-readable medium, as used herein, is intended to include a single medium as well as a collection of physically separate media, such as, for example, a collection of compact disks or one or more hard disk drives in combination with a computer memory. As used herein, a machine-readable storage medium does not include a signal.

Such software may also include information (e.g., data) carried as a data signal on a data carrier, such as a carrier wave. For example, machine-executable information may be included as a data-carrying signal embodied in a data carrier in which the signal encodes a sequence of instruction, or portion thereof, for execution by a machine (e.g., a computing device) and any related information (e.g., data structures and data) that causes the machine to perform any one of the methodologies and/or embodiments described herein.

Examples of a computing device include, but are not limited to, an electronic book reading device, a computer workstation, a terminal computer, a server computer, a handheld device (e.g., a tablet computer, a personal digital assistant "PDA", a mobile telephone, a smartphone, etc.), a web appliance, a network router, a network switch, a network bridge, any machine capable of executing a sequence of instructions that specify an action to be taken by that machine, and any combinations thereof. In one example, a computing device may include and/or be included in a kiosk.

FIG. 8 shows a diagrammatic representation of one embodiment of a computing device in the exemplary form of a computer system or computing module 800 within which a set of instructions for causing a control system, for example, system 100, sub-system 102 or CAD program module 106, to perform any one or more of the aspects and/or methodologies of the present disclosure may be

executed. It is also contemplated that multiple computing devices may be utilized to implement a specially configured set of instructions for causing the device to perform any one or more of the aspects and/or methodologies of the present disclosure. Computer system or module **800** includes a processor **804** and a memory **808** that communicate with each other, and with other components, via a bus **812**. Bus **812** may include any of several types of bus structures including, but not limited to, a memory bus, a memory controller, a peripheral bus, a local bus, and any combinations thereof, using any of a variety of bus architectures.

Memory **808** may include various components (e.g., machine readable media) including, but not limited to, a random access memory component (e.g., a static RAM “SRAM”, a dynamic RAM “DRAM”, etc.), a read only component, and any combinations thereof. In one example, a basic input/output system **816** (BIOS), including basic routines that help to transfer information between elements within computer system **800**, such as during start-up, may be stored in memory **808**. Memory **808** may also include (e.g., stored on one or more machine-readable media) instructions (e.g., software) **820** embodying any one or more of the aspects and/or methodologies of the present disclosure. In another example, memory **808** may further include any number of program modules including, but not limited to, an operating system, one or more application programs, other program modules, program data, and any combinations thereof.

Computer system **800** may also include a storage device **824**. Examples of a storage device (e.g., storage device **824**) include, but are not limited to, a hard disk drive for reading from and/or writing to a hard disk, a magnetic disk drive for reading from and/or writing to a removable magnetic disk, an optical disk drive for reading from and/or writing to an optical medium (e.g., a CD, a DVD, etc.), a solid-state memory device, and any combinations thereof. Storage device **824** may be connected to bus **812** by an appropriate interface (not shown). Example interfaces include, but are not limited to, SCSI, advanced technology attachment (ATA), serial ATA, universal serial bus (USB), IEEE 1244 (FIREWIRE), and any combinations thereof. In one example, storage device **824** (or one or more components thereof) may be removably interfaced with computer system **800** (e.g., via an external port connector (not shown)). Particularly, storage device **824** and an associated machine-readable medium **828** may provide nonvolatile and/or volatile storage of machine-readable instructions, data structures, program modules, and/or other data for computer system **800**. In one example, software **820** may reside, completely or partially, within machine-readable medium **828**. In another example, software **820** may reside, completely or partially, within processor **804**.

Computer system **800** may also include an input device **832**. In one example, a user of computer system **800** may enter commands and/or other information into computer system **800** via input device **832**. Examples of an input device **832** include, but are not limited to, an alpha-numeric input device (e.g., a keyboard), a pointing device, a joystick, a gamepad, an audio input device (e.g., a microphone, a voice response system, etc.), a cursor control device (e.g., a mouse), a touchpad, an optical scanner, a video capture device (e.g., a still camera, a video camera), touchscreen, and any combinations thereof. Input device **832** may be interfaced to bus **812** via any of a variety of interfaces (not shown) including, but not limited to, a serial interface, a parallel interface, a game port, a USB interface, a FIREWIRE interface, a direct interface to bus **812**, and any

combinations thereof. Input device **832** may include a touch screen interface that may be a part of or separate from display **836**, discussed further below. Input device **832** may be utilized as a user selection device for selecting one or more graphical representations in a graphical interface as described above.

A user may also input commands and/or other information to computer system **800** via storage device **824** (e.g., a removable disk drive, a flash drive, etc.) and/or network interface device **840**. A network interface device, such as network interface device **840** may be utilized for connecting computer system **800** to one or more of a variety of networks, such as network **844**, and one or more remote devices **848** connected thereto. Examples of a network interface device include, but are not limited to, a network interface card (e.g., a mobile network interface card, a LAN card), a modem, and any combination thereof. Examples of a network include, but are not limited to, a wide area network (e.g., the Internet, an enterprise network), a local area network (e.g., a network associated with an office, a building, a campus or other relatively small geographic space), a telephone network, a data network associated with a telephone/voice provider (e.g., a mobile communications provider data and/or voice network), a direct connection between two computing devices, and any combinations thereof. A network, such as network **844**, may employ a wired and/or a wireless mode of communication. In general, any network topology may be used. Information (e.g., data, software **820**, etc.) may be communicated to and/or from computer system **800** via network interface device **840**.

Computer system **800** may further include a video display adapter **852** for communicating a displayable image to a display device, such as display device **836**. Examples of a display device include, but are not limited to, a liquid crystal display (LCD), a cathode ray tube (CRT), a plasma display, a light emitting diode (LED) display, and any combinations thereof. Display adapter **852** and display device **836** may be utilized in combination with processor **804** to provide graphical representations of aspects of the present disclosure. In addition to a display device, a computer system **800** may include one or more other peripheral output devices including, but not limited to, an audio speaker, a printer, and any combinations thereof. Such peripheral output devices may be connected to bus **812** via a peripheral interface **856**. Examples of a peripheral interface include, but are not limited to, a serial port, a USB connection, a FIREWIRE connection, a parallel connection, and any combinations thereof.

The foregoing has been a detailed description of illustrative embodiments of the invention. Various modifications and additions can be made without departing from the spirit and scope of this invention. Features of each of the various embodiments described above may be combined with features of other described embodiments as appropriate in order to provide a multiplicity of feature combinations in associated new embodiments. Furthermore, while the foregoing describes a number of separate embodiments of the apparatus and method of the present invention, what has been described herein is merely illustrative of the application of the principles of the present invention. Additionally, although the methods herein have been illustrated as being performed in a specific order, the ordering is highly variable within ordinary skill to achieve the methods, systems, and software for hardware-component based geometric modifications of computer-modeled part designs described herein.

15

Accordingly, this description is meant to be taken only by way of example, and not to otherwise limit the scope of this invention.

What is claimed is:

1. A method for providing a natural language interface for a computer-aided design (CAD) system, the method performed by a computing device and comprising:

automatedly receiving, via an input device of a computing device, a user selection through a graphical user interface (GUI) of a particular location of a displayed CAD model;

automatedly receiving, via the computing device, a user voice input comprising a plurality of words and referring to the particular location;

automatedly, via the computing device, parsing the user voice input;

automatedly, via the computing device, determining a meaning for the parsed user voice input, the meaning including a reference to the particular location, one or more words associated with one or more program actions, and one or more words associated with one or more command topics, each of the particular location, program actions, and command topics related to a specific item referred to in the voice input;

automatedly, via the computing device and based on the determined meaning, identifying information comprising two or more specifications for the specific item via a CAD context database, wherein the specifications

16

comprise two or more of: a diameter, a length, a depth, a thickness, and a material;

automatedly, via the computing device, assembling a query for additional information based on the meaning, the identified information, and the CAD model;

automatedly, via the computing device, providing the assembled query to a resource provider service;

automatedly, via the computing device, receiving the additional information from the resource provider service, the additional information comprising information regarding at least one CAD model of the specific item to be placed at the particular location selected as a function of the meaning, the identified information, and the CAD model;

automatedly, via the computing device, prompting the user for missing information determined as a function of the additional information based on whether the specific item is compatible with one or more aspects of the CAD model when placed at the particular location;

automatedly, via the computing device, receiving a response from the user to the prompt for missing information;

automatedly, via the computing device, providing a command to at least one CAD program module based on the additional information and the response from the user to the prompt for missing information; and

automatedly, via the computing device, updating the GUI with respect to the CAD model based on the command.

\* \* \* \* \*