



Precision**Power**®

Absolutely State of the Art Mobile Audio™

SUBWOOFERS

AMPLIFIERS

FULL RANGE

SOURCE UNITS

ACCESSORIES

2013

POWERCLASS AMPLIFIERS

Anybody who thinks that quality was lost when the old school products died is foolishly mistaken! Anything that involves technology advances over time. Newer materials, new engineering techniques, and technology itself. The Power class amplifiers clearly represents what audiophile quality car audio should be. Unparalleled sound quality stems from multiple factors: top quality torroidial transformers, all N-channel transistors, extremely low tolerance resistors and capacitors, and so forth. The preamp section is extremely detailed with 4 different types of crossovers: high pass, low pass, band pass, and subsonic. And just to be sure that the amplifier's output is not ruined by cheap or noisy input signals, we included balanced line inputs to be used with our BLT transmitters for the ultimate listening experience!



BLT Balanced Line Transmitter



- Sequenced Delays Eliminate Residual Power-Up/Power-Down Pops
- Differential RCA Inputs Isolate 12V/Audio to Ground, Eliminating Ground Loops and Noise
- Full Signal Path Low Noise/Distortion Circuitry Topology
- Optimal Component Layout for Minimal Distortion Induction & Signal Separation
- Triple Darlington Audio Output Stages
- Differential Drives Divide Pre-Amp & Power-Amp Stages, Eliminating Ground Looping
- Full Differential Feedback Surrounding Power-Amp Stages directly from Speaker Terminals resulting in Uncolored Sound Reproduction and Elimination of Ground Loops
- Output Stage Bias Individually Sequenced, Optimizing Sound Quality
- Stout 2 Oz. Copper Traces Effortlessly Transfer High Volume Internal Current
- Close-Tolerance Signal Path Components - 1% Resistors & 5% Capacitors
- Parametric Bass Equalizer - Proprietary Bass Equalization
- Continuously Variable 41 Position Detent Crossovers
- Balanced Line Input from BLT
- Pulse Width Modulated
- Large TO218 MOSFET Transistors
- Volume, Low ESR Capacitance Banks Compensate Power Supply Ripple Currents
- Extra Low Current Drive Stage Increases Efficiency & Sound Clarity
- Individually Regulated Preamp/Crossover Power Supplies Ensure Signal Purity



Power Class	PC360.2	PC650.2	PC400.4	PC640.4	PC740.5	PC1000.1
Channels	2 ch. Class A/B	2 ch. Class A/B	4 ch. Class A/B	4 ch. Class A/B	5 ch. Class A/B	1 ch. Class D
RMS Power 4Ω	110 x 2	105 x 2	70 x 4	115 x 4	60 x 4 & 250 x 1	-
RMS Power 2Ω	180 x 2	325 x 2	100 x 4	160 x 4	90 x 4 & 380 x 1	1,000
RMS Power 4Ω Bridged	360 x 1	650 x 1	200 x 2	320 x 2	180 x 2 & 380 x 1	-
RMS Power 1Ω	-	-	-	-	-	1,000
Damping Factor	>3000	>1500	>2000	>3000	>2000	>2400
Stereo Separation	62dB	73dB	74dB	68dB	74dB	-
Channels 1&2 HPF	15-4kHz	15-4kHz	15Hz-4kHz	15-4kHz	15-4kHz	-
Channels 1&2 LPF	50-4kHz	50-4kHz	-	-	-	50-200Hz
Channels 3&4 HPF	-	-	15Hz-4kHz	15-4kHz	15-500Hz	-
Channels 3&4 LPF	-	-	50-4kHz	50-4kHz	50-4kHz-50-200 ch.5	-
Bass Boost (30-90Hz)	0-12dB	0-12dB	0-12dB	0-12dB	0-12dB, 45Hz	0-12dB
Phase Control	-	-	-	-	180°	0-180°
Subsonic Filter	15-4kHz	15-4kHz	15Hz-4kHz	15Hz-4kHz	15-50Hz	15-50Hz
Remote Gain Control	Yes	Yes	-	-	Yes	Yes
Dimensions (2"h x 10"w)	11.375"	15"	13"	16.75"	16.75"	16"

PHANTOM AMPLIFIERS

Is bigger always better? No! For many years, if you wanted a big system, you needed big products. Not anymore. Using state of the art SMT and Class D technologies, you can now have a system as big as you want, and still not sacrifice all your storage area. These new big amps in a tiny chassis are available in 1, 2, 4 and 5 channel models to fit every application...



We're in a time where small is "in". Smaller, more economical vehicles are more and more desirable. But that doesn't mean you have to sacrifice big power for your system. The new iON amplifiers pack huge amounts of power into small chassis thanks to efficient full range Class D topology and SMT technology. Complimented with every possible preamp adjustment, the iON amplifiers leave nothing to be desired...

Phantom Class D Amplifiers

Class D Full-Range SMT Circuitry
Double-Sided Composite Epoxy PCB
2-Ohm Stereo, 4-Ohm Bridged Multi-Channel
1-Ohm Stable Class D Monoblock
Three-Way Protection Circuitry
Delayed On/Off Circuit
Tri-Mode Capable (2/4/5 ch. models)

Variable 12dB High, Low, & Subsonic Crossovers
Band-Pass Crossovers (4ch & 5ch.)
Input Source Selector (4ch. & 5ch.)
Variable 12dB 50Hz Bass Boost (1ch.)
Dash Mounted Remote Gain Control (5ch. & 1 ch.)
Direct Wire 8ga. Power & Speaker Terminals
0ga Reducer Terminal Included

PHANTOM	P600.2	P900.4	P900.5	P1000.1
Channels	2 Ch. Class D	4 Ch. Class D	5cCh. Class D	1ch. Class D
RMS Power 4Ω	190 x 2	145 x 4	70 x 4 + 270 x 1	580
RMS Power 2Ω	300 x 2	225 x 4	115 x 4 + 440 x 1	725
RMS Power 4Ω Bridged	600 x 1	450 x 2	230 x 2 + 440 x 1	-
RMS Power 1Ω	-	-	-	1,000
Remote Gain Control	-	-	-	Included
Dimensions: (6.50" w x 2" h)	8.25"	10.625"	13.25"	13.25"

iON

Absolutely State of the Art Mobile Audio

Efficient Full-Range Class D Topology
Advanced SMT Technology
Three-Way Protection Circuitry
Delayed On/Off Circuit
Tri-Mode Capable (2/4/5 ch. models)

iON	i350.2	i320.4	i520.4	i540.5	i450.1	i650.1
Channels	2	4	4	5	1	1
RMS Power 4Ω	115 x 2	60 x 4	100 x 4	50 x 4 + 170 x 1	260 x 1	400 x 1
RMS Power 2Ω	175 x 2	80 x 4	130 x 4	75 x 4 + 240 x 1	450 x 1	650 x 1
RMS Power 4Ω Bridged	350 x 1	160 x 2	260 x 2	150 x 2 + 240 x 1	-	-
RMS Power 1Ω	-	-	-	-	-	-
Remote Gain Control	-	-	-	Included	Included	Included
Dimensions: (5.375" w x 1.875" h)	5.50"	7.00"	9.25"	9.25"	8.00"	9.25"

BLACK ICE AMPLIFIERS

Precision Power is proud to introduce the newest generation of amplifiers, Black ICE. Over compensated high headroom power supplies are capable of producing more than conventional power gain with 2 ohm loads. Selected models accept balanced signal for the purest sound. Additionally, double sided PCB's with all surface mount technology enhance the quality of your listening experience.



BLT Balanced Line Transmitter

Complimenting superior performance, a molded 1 piece gloss black aluminum surface and copper accents give Black ICE amplifiers the appearance their hidden technologies deserve.

Black Ice Amplifiers

Full SMT Surface Mount Technology
Double Sided Composite Epoxy PCB
2-Ohm Stereo, 4-Ohm Bridged Class A/B
1-Ohm Stable Class D Monoblock
Balanced Signal Input (requires BLT)
Variable 12dB High, Low, & Subsonic Filters

Band-Pass Crossovers (4ch & 5ch.)
Input Source Selector (4ch. & 5ch.)
Variable 12dB 45Hz Bass Boost
Variable 0-180° Phase Control (1 ch.)
Dash Mounted Remote Gain Control
Direct Wire Power & Speaker Terminals

Wire Concealing End Caps
Molded Gloss Black Acrylic Top
Three-Way Protection Circuitry
Delayed On/Off Circuit
Tri-Mode Capable (2/4/5 ch. models)

BLACK ICE CLASS A/B	BK120.2	BK210.2	BK340.2	BK340.4	BK520.4	BK800.4	BK580.5
Channels	2 Ch. A/B	2 Ch. A/B	2 Ch. A/B	4 Ch. A/B	4 Ch. A/B	4 Ch. A/B	5 Ch. A/B
RMS Power 4Ω	40 x 2	66 x 2	110 x 2	55 x 4	95 x 4	130 x 4	55 x 4 + 160 x 1
RMS Power 2Ω	60 x 2	105 x 2	170 x 2	85 x 4	130 x 4	200 x 4	85 x 4 + 240 x 1
RMS Power 4Ω Bridged	120 x 1	210 x 2	340 x 1	170 x 2	260 x 2	400 x 2	170 x 2 + 240 x 1
Remote Gain Control	-	-	-	-	-	-	Included
Dimensions: (8.25" w x 2" h)	8.75"	9.50"	14.25"	12.25"	17.25"	21.00"	18.25"

BLACK ICE CLASS D	BK650.1D	BK1300.1D	BK1800.1D
Channels	1 Ch. Class D	1 Ch. Class D	1 Ch. Class D
RMS Power 4Ω	240	500	700
RMS Power 2Ω	450	900	1,100
RMS Power 1Ω	650	1,300	1,800
Remote Gain Control	Included	Included	Included
Dimensions: (8.25" w x 2" h)	12.50"	17.00"	19.75"



Remote Gain Control
Include With Select Models

SEDONA AMPLIFIERS

Back in the day, Sedona amplifiers stood for quality and durability with no sacrifice in sound reproduction. Today's economy yields higher sales for lower cost products. The Sedona amps are great quality with an entry level price point. But the features far exceed other entry level priced products on the market. High-pass low-pass, bandpass and subsonic crossovers are capable of everything imaginable from 15Hz-5kHz. A bass boost and remote gain are also included on applicable models. Don't settle for entry level products, outperform with Sedona!



Brushed Aluminum Finish
Class A/B Full Range Monoblock Available
12dB Variable High, Low, & Subsonic Crossovers
6dB & 12dB 50Hz Bass Boost
2 & 4 ch. Models Band-Pass Crossovers
180° Phase Control for 5 Ch. & Monoblocks
High Level or 200mV-6V Low Level Input
Direct 4 ga. Power & 8 ga. Speaker Terminals
Dash Mount Remote Gain Control Included
Red Top Panel Accent Lighting

SEDONA CLASS A/B	S200.2	S420.2	S580.2	S320.4	S580.4	S760.4	S580.5
Channels	2 Ch. A/B	2 Ch. A/B	2 Ch. A/B	4 Ch. A/B	4 Ch. A/B	4 Ch. A/B	5 Ch. A/B
RMS Power 4Ω	70 x 2	130 x 2	190 x 2	55 x 4	100 x 4	120 x 4	55 x 4 + 160 x 1
RMS Power 2Ω	100 x 2	210 x 2	290 x 2	80 x 4	145 x 4	190 x 4	80 x 4 + 260 x 1
RMS Power 4Ω Bridged	200 x 1	420 x 1	580 x 1	160 x 2	290 x 2	380 x 2	160 x 2 + 260 x 1
Remote Gain Control	-	-	-	-	-	-	-
Dimensions: (9.50" w x 2.375" h)	13.00"	19.00"	23.00"	17.00"	19.50"	23.00"	23.00"

SEDONA MONOBLOCK	S270.1	S550.1D	S850.1D	S1300.1D	S2000.1D
Channels	1 Ch. Class A/B	1 Ch. Class D	1 Ch. Class D	1 Ch. Class D	1 Ch. Class D
RMS Power 4Ω	170	240	350	520	750
RMS Power 2Ω	270	400	600	900	1,300
RMS Power 1Ω	-	550	850	1,300	2,000
Remote Gain Control	-	Included	Included	Included	Included
Dimensions: (9.50" w x 2.375" h)	13.00"	11.75"	13.50"	16.00"	19.00"

DEQ-8 DIGITAL SIGNAL PROCESSOR

DEQ-8 is a unique DSP processor brought to you by the Product Development Team at Precision Power. A 24bit/96kHz digital audio processor allowing you full control of your system. With mobile audio changing daily, we thought to our self's what could we bring to the market that would meet the needs of all vehicles, weather a factory system or the biggest baddest after market systems.

With 6 channel high level inputs, DEQ-8 allows you to ingrate seamlessly with your factory radio. The system allows you full control of aftermarket speakers and amplifiers without replacing your factory head unit, and best of all you don't loose any of your factory installed options. Synthesis allows you to fine tune your system with the easy to use program controlled by any laptop. Avail-able on both MAC and PC.



With 8 channel outputs DEQ-8 allows you to create multiple platforms. Weather a simple 2 way setup with subwoofers or a 4 way setup with multiple drivers. Synthesis delivers the highest in audio quality without compromising your wallet.

HARDWARE

- 172MHz -28/56bit DSP
- 24bit ADC/DAC
- 96kHz sample rate
- 114db DR ADC converters
- 114db DR DAC converters
- Balanced OR Unbalanced RCA Inputs
- 8V RCA Output/ Balanced
- 31 Band Graphic EQ
- 9 Band Parametric EQ
- 4 Way crossover
- Time Alignment

SOFTWARE CONTROL

- USB 2.0 interface
- Plug&Play No driver required
- WinXP/Vista/7 & MAC Compatible
- Firmware upgradable for future expansion

PDX-10K AMPLIFIER

10,000W SPL COMPETITION AMPLIFIER

- Non-Regulated MOSFET PWM Power Supply
- All "N" Channel TO218 MOSFET Transistors
- Dual Internally Bridged Mono-blocks
- Ideal for 16V Applications
- Three-Way Protection Circuitry
- Dash Mount Remote Gain Control
- Dual 0 ga. Power Inputs, 4 ga. Speaker Outputs



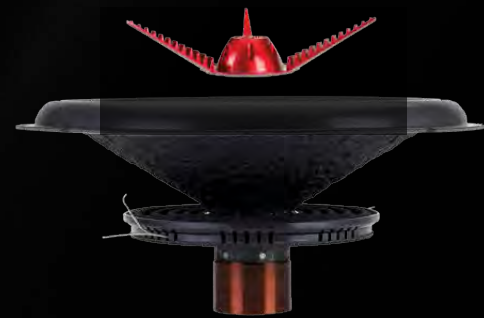
PDX-10K	
Channels	1 ch. Class D
RMS @ 2Ω, 16V	3,700
RMS @ 1Ω, 16V	6,100
RMS @ .5Ω, 16V	10,000
Harmonic Distortion	1.00%
Frequency Response	15-150Hz
Signal-to-Noise Ratio	87dB
Damping Factor	> 350
Signal Voltage	200mV-7.6V
Potential Current Draw	1,200A
Low Pass Filter	24dB: 35-250Hz
Bass Boost	0-18dB; 40-120Hz
Subsonic Filter	24dB: 15-50Hz
Remote Gain Control	Yes
Dimensions	2.75" h x 12.625" w x 23.25L

POWERCLASS SUBWOOFERS

Intriguing from the first look, the new PC subwoofers have even more to tell than what meets the naked eye... The wild looking dustcap is not just for visual pleasure, but also acts as a heatsink to extract heat from the coil gap. It is also embedded into recesses in the cone and stiffens the cone for durability and to eliminate cone flex which causes radiated noise. All in all, this subwoofer is a result of strong engineering and dedication to the competitor in all of us...



Non Pressed Paper Pulp Cone
Polyether Foam Surround
2.5" 4-layer Voice Coil on Anodized Aluminum Former
Nickel Plated 8ga. Compression Wire Terminals
Dual Poly-Cotton Suspension Spiders
Die-Cast Aluminum Frame w/ Candy Apple Finish
170oz. Strontium Ferrite Magnet
Vented T-Yoke Back-plate
Cast Aluminum Heat-sink Dust-cap
Re-cone Kit Available



POWERCLASS	PC.12	PC.124	PC.15	PC.152
RMS Power (watts)	800	800	900	900
Efficiency (1w/1m dB)	85.40dB	84.60dB	87.30dB	86.6dB
Voice Coil Configuration	2.50" DVC 2Ω	2.50" DVC 4Ω	2.50" DVC 2Ω	2.50" DVC 4Ω
Mounting Depth	6.50"	6.50"	7.50"	7.50"
Optimum Sealed ft³	1.00	1.00	2.00	2.00
Optimum Ported ft³	2.25	2.25	4.00	4.00

POWERCLASS SUBWOOFERS

The DS drivers are not your typical subwoofers. In fact, they are not subwoofers at all. They are Pro Audio woofers to compliment the Pro Audio speakers. These woofers feature dual suspension, high resonant frequencies and extremely high efficiencies!



Cast Aluminum Frame
Pressed Paper Cone
Cast & Machined Phase Plug
EVA Gasket
4 Layer Voice Coil
Aluminum VC Former
Dual Conex Spiders
Reinforced Foam Surround
Compression Terminals
Re-cone Kits Available



POWERCLASS	PC.15DS	PC.18DS
RMS Power (watts)	1,200	1,600
Efficiency (1w/1m dB)	94dB	93dB
Voice Coil Configuration	3.00" DVC 4Ω	4" DVC 4Ω
Mounting Depth	6.75"	9"
Optimum Sealed ft³	N/A	N/A
Optimum Ported ft³	4.00	5.00

PHANTOM SUBWOOFERS



Woven Fiberglass Composite Cone

All Phantom subwoofers use fiberglass stranding woven together for ultimate strength and less elasticity. A heavy soaking in epoxy combined with the sonic qualities of pulp paper backing proves itself worthy of any system.

100% OFC 4-Layer Voice Coil

Phantom subwoofers use generous 1.50" long, 2.5" diameter 100% OFC Copper voice coils. A vented Aluminum former extract and dissipate any heat build-up, resulting in improved power handling.

Extended Excursion Polyurethane Surround

Polyurethane is a foam compound used in the manufacture of countless gasket and insulation products, known for its adhesive bonding properties. Phantom subwoofers utilize an extended excursion polyurethane surround for strength and flexibility during extreme movement.

Back Plate & T-Yoke Venting

Heat build-up is a leading cause of catastrophic woofer failure. Venting built into the T-Yoke, back plate, and voice coil extract and dissipate heat, ensuring Phantom subwoofers keep their cool.

PHANTOM	PH.10	PH.12	PH.15
RMS Power (watts)	700	800	900
Efficiency (1w/1m dB)	82.95dB	85.80dB	88.45dB
Voice Coil Configuration	2.50" DVC 2Ω	2.50" DVC 2Ω	2.50" DVC 2Ω
Mounting Depth	5.875"	6.00"	6.875"
Optimum Sealed ft³	1.00	1.50	2.75
Optimum Ported ft³	1.50	2.25	2.75

PHANTOM SUBWOOFERS

Acoustic engineers want 3 things out of a woofer: high SPL, low frequency response, and small air requirements. No woofer can be optimized for all 3, so some sacrifices always have to be made if a woofer has a very specific design goal...

Many vehicles do not have tons of airspace available for a big, bulky enclosure. Some vehicles, like some crew-cab trucks have no space for a subwoofer. Until now... Phantom-13 is the shallowest woofer on the market! Coming in at a mere 2" of depth, they will fit comfortably behind rear crew-cab truck seats, under many front seats, or even in a friggin' door with some custom fabrication! While other "shallow mount" subwoofers are available, they typically require traditional airspace. Phantom-13 is 13.25" in diameter and boasts a huge 5" coil with inverted motor. Not only does it play well in ½ cubic foot (typical for most 8"-10" woofers), but it reproduces more lower frequency response than most 12" woofers with much larger enclosures.

Our engineers were willing to sacrifice a couple of dB of efficiency to bring you a truly phenomenal, application specific subwoofer. No more whining about not having a subwoofer available that will fit in virtually any vehicle!



Low Bass In No Space!

Proprietary Cast Aluminum Frame
Inverted Motor Assembly
PP Coated Pressed Paper Cone
Polyurethane Surround
2" Mounting Depth !!!
5" Aluminum Former Voice Coil
Requires only .75 ft Box!
Semi-Circular Frame Venting
12ga Direct Connect Wire Terminals
Polyurethane Mounting Gasket

PHANTOM-13	
RMS Power (watts)	200
Efficiency (1w/1m dB)	80.82dB
Voice Coil Configuration	5.00" SVC 4Ω
Mounting Depth	2.00"
Optimum Sealed ft³	0.75
Optimum Ported ft³	N/A



BLACK ICE SUBWOOFERS



Closed Cell Polyurethane Surround

A strong and flexible heat resistant compound, nitrile butadiene rubber is used widely in automotive applications. Black Ice woofers utilize an extended excursion nbr surround for its strength and flexible properties during extreme movement.

Back Plate & T-Yoke Venting

Heat build-up is a leading cause of catastrophic woofer failure. Venting built into the T-Yoke, back plate, and voice coil extract and dissipate heat, ensuring Black Ice woofers keep their cool.

100% OFC 4-Layer Voice Coil

Black Ice woofers use generous 1.25" long, 2.00" diameter 100% OFC Copper voice coils. A vented Aluminum former extract and dissipate any heat build-up, resulting in improved power handling.

PHANTOM	BI.104	BI.102	BI.124	BI.122	BI.154	BI.152
RMS Power (watts)	450	450	500	500	550	550
Efficiency (1w/1m dB)	87.10dB	88.0dB	90.20dB	91.20dB	86.60dB	87.7dB
Voice Coil Configuration	2.00" DVC 4Ω	2.00" DVC 2Ω	2.00" DVC 4Ω	2.00" DVC 2Ω	2.00" DVC 4Ω	2.00" DVC 2Ω
Mounting Depth	5.375"	5.375"	5.75"	5.75"	6.50"	6.50"
Optimum Sealed ft³	1.00	1.00	1.75	1.75	2.50	2.50
Optimum Ported ft³	1.50	1.50	2.00	2.00	3.00	3.00

ART COLLECTION SUBWOOFERS

Many of today's car audio products consist of a lot of custom tooled parts, all which cost extra money. The design goal for the SQ 8" was to engineer phenomenal audiophile-grade subwoofers that do not cost a fortune. If you're looking for chrome or something really flashy, look somewhere else. If you're looking for perfect subwoofer performance, look no further. A.8SQ comes with a dual 4-ohm VC to wire a pair to either class of amplifier.

Art SQ Subwoofers

Non-Pressed Paper Cone
IMPP/Mica Composite Dust Cap
Rubber Gasket
4 Layer Voice Coil
Kapton VC Former
Conex Spider
Reinforced Foam Surround
Vented Pole Piece
Compression Terminals



ART COLLECTION A.8SQ	
RMS Power (watts)	180
Efficiency (1w/1m dB)	83dB
Voice Coil Configuration	2.00" DVC 4Ω
Mounting Depth	4.00
Optimum Sealed ft³	0.60
Optimum Ported ft³	0.75

SEDONA SUBWOOFERS



Injection Molded Polypropylene Cone
Overcast Stitched Cones
NBR Rubber Surround
2" SVC 4-Ohm Voice Coil
Embossed Dust Cap
Frame Voice Coil Venting
Vented T-Yoke & Back Plate

SEDONA	SN.8	SN.10	SN.12
RMS Power (watts)	250	300	350
Efficiency (1w/1m dB)	85.70dB	88.90dB	92.30dB
Voice Coil Configuration	2.00" SVC 4Ω	2.00" SVC 4Ω	2.00" SVC 4Ω
Mounting Depth	4.00"	4.50"	5.375"
Optimum Sealed ft³	0.75	1.00	1.25
Optimum Ported ft³	1.00	1.50	1.75

POWERCLASS COMPONENTS

The PC components come in 2-way and 3-way models with all individual drivers using rare-earth Neodymium motors for high BL, light weight and compact size. Traditionally only tweeters use Neo motors, but we used Neo on the 2.5" midrange and 6.5" midbass as well making the drivers very strong and compact. The 6.5" uses a Kevlar composite paper cone with laminated foam backing. Paper cones traditionally yield the most natural, uncolored sound reproduction possible. We embedded Kevlar fibers into the paper for rigidity which reduces cone flexing and radiated distortion. The 2.5" midrange uses an aluminum cone for lightweight and strength while the tweeter uses a 20mm inverted aluminum diaphragm. The shallow depth of the midrange allows it to mount with the tweeter on the dash, or in the A-pillar, for phenomenal staging, rather than being limited to using a 4" midrange with the tweeter and being forced, in most cases, to fabricate kickpanel pods.



POWERCLASS	PC2.65C	PC3.65C
Size & Configuration	6.5" 2-way	6.5" / 2.5" 3-way
Power Handling	90w	100w
Frequency Response	60-20kHz	60-20kHz
Efficiency (1w/1m dB)	87dB	87dB
Woofer Mounting Depth	2.625"	2.625"

6.5" Midbass

- High Strength Neodymium Motor
- Kevlar Reinforced Paper Cone with Laminated Foam Backing
- Solid Phase Plug
- Low Resonance Polyphenylene Sulfide Basket
- Conex Spider with Stitched Tinsel Leads
- Butyl Rubber Surround
- CCAW 2" Voice Coil
- Glass Fiber VC Former

2.5" Midrange

- High Strength Neodymium Motor
- Aluminum Cone
- Aluminum Dust Cap
- Low Resonance Polyphenylene Sulfide Basket
- Conex Spider Inverted Butyl Rubber Surround
- CCAW 1" Voice Coil
- Aluminum VC Former with cooling vents

20mm Tweeter

- High Strength Neodymium Motor
- Inverted and Dimpled Aluminum Diaphragm
- CCAW 20mm Voice Coil
- Kapton VC Former

PHANTOM COMPONENTS

WAIT! DO NOT let this little component sets fool you. Once a dust-bunny covered relic in the "useless sample" bin at Precision Power headquarters, the new Phantom components took us all by surprise. It was originally thought to be a passive radiator, but to our amazement, these lil' guys PACK A PUNCH!!!

Even with only 1" mounting depth, the 6.5" woofer is capable of reproducing the lowest of lows and snappiest kick bass with very little effort! An inverted neodymium motor structure allows a shallow and compact profile frame. The cone and dust cap, ahemm..., is 1-piece IMPP with recesses molded into the back side to receive the voice coil structure. This direct connection of cone to voice coil yields the snappy reaction of a flat piston driver, virtually eliminating cone-radiated distortion. Very little suspension is necessary for this configuration, but what's there snuggles up to the cone underside in it's own recess, and attaches directly to a recess in the frame for the motor. WTH you say? The suspension of conventional drivers attaches to the voice coil and can flex, bend, or warp with the sometimes violent acceleration of the voice coil. Since the suspension attaches to the fixed structure of the frame, the voice coil is less likely to loose control, keeping its linearity. BUT WAIT, THER'S MORE!!!

The tweeter, damn, don't get us started, is a smooth & crisp (yes that's possible) 1.25" inverted dimpled Aluminum dome diaphragm with phase plug. It's ok..., read that again. The hochfrequenz response of this tweeter is phenomenal. What you expect from luxurious component set at quadruple the value. Even though the diaphragm is an unconventional 1.25", the tweeter can be remove from the housing structure and installed in virtually any OEM tweeter location. Oh yeah, did we mention this tweeter sounds really good? It's so killer, we also offer it to you as an add-on to replace your junky factory tweeter, you're welcome...



PHANTOM	PH2.65C
Size & Configuration	6.5" 2-way
Power Handling	80w
Frequency Response	60-20kHz
Efficiency (1w/1m dB)	94dB
Woofer Mounting Depth	1.00"

Shallow Mount High Efficiency Component Set
Low Resonance Polycarbonate Frame
Only 1" Mounting Depth!
1-Piece Polypropylene Dome Cone
High Strength Neodymium Magnets
1.25" Aluminum Inverted Dome Tweeter
Passive 12dB Crossover Included
+/- 3dB Tweeter Attenuation Switch
PTC Tweeter Protection



ART COLLECTION COMPONENTS



ART COLLECTION A2.65C

Size & Configuration	6.5" 2-way
Power Handling	130w
Frequency Response	70-20kHz
Efficiency (1w/1m dB)	86dB
Woofer Mounting Depth	2.625"

Convertible Component or Coaxial
Optional Bi-Ampable Operation
Pressed Paper Cone
Butyl Rubber Surround
CONEX Spider Suspension

Aluminum Phase Plug
1" Silk Dome Tweeter
Tweeter Flush Mount Included
Aluminum Phase Plug
2-way Crossover Included

BLACK ICE COMPONENTS

IMPP Cone w/ Carbon Fiber Finish
1" Kapton Voice Coil
Inverted Phase Plug
1" Swivel Teteron Dome Tweeter
Flush or Surface Mounting
12db Passive Crossover Included
-3dB Tweeter Attenuation
PTC Tweeter Protection

BLACK ICE BI.65C

Size & Configuration	6.5" 2-way
Power Handling	120w
System Impedance	4-Ohm
Frequency Response	70-20kHz
Efficiency (1w/1m dB)	90dB
Woofer Mounting Depth	2.50"



SEDONA COMPONENTS

Zolon Coated Low Resonance Basket
Polypropylene Cone
Butyl Rubber Surround
1" Aluminum Voice Coil
Rubber Magnet Cover
20oz. Ferrite Magnet
1" Mylar Tweeter

SEDONA S2.65C

Size & Configuration	6.5" 2-way
Power Handling	100w
System Impedance	4-Ohm
Frequency Response	70-20kHz
Efficiency (1w/1m dB)	92dB
Woofer Mounting Depth	2.50"



POWERCLASS FULL RANGE



PC.52



PC.572



PC.572



PC.692



Passive Crossovers Included

POWER CLASS	PC.692	PC.652	PC.52	PC.572
Size & Configuration	6" x 9" 2-way	6.5" 2-way	5.25" 2-way	5" x 7" 2-way
Power Handling	150w	120w	100w	120w
System Impedance	4-Ohm	4-Ohm	4-Ohm	4-Ohm
Frequency Response	45-20kHz	65-20kHz	70-20kHz	55-20kHz
Efficiency (1w/1m dB)	93dB	91dB	90dB	92dB
Woofer Mounting Depth	4.25"	3.75"	3.00"	3.50"

BLACK ICE FULL RANGE



BLACK ICE SPEAKER	BI.694	BI.653	BI.573	BI.502	BI.402
Size & Configuration	6" x 9" 4-way	6.5" 4-way	5" x 7" 3-way	5.25" 3-way	4" 3-way
Power Handling	120w	90w	90w	75w	60w
System Impedance	4-Ohm	4-Ohm	4-Ohm	4-Ohm	4-Ohm
Frequency Response	65-20kHz	65-20kHz	70-20kHz	80-20kHz	100-20kHz
Efficiency (1w/1m dB)	89dB	89dB	89dB	88dB	88dB
Woofer Mounting Depth	3.25"	2.25"	2.25"	2.25"	2.00"

IMPP Cone w/ Carbon Fiber Finish
1.25" Mylar Midrange
1" Mylar Tweeter
1" Kapton Voice Coil
Butyl Rubber Surround
Nomex Spider Suspension
Quick Disconnect Terminals

SEDONA FULL RANGE



SEDONA SPEAKER	S.693	S.653	S.52	S.42	S.573
Size & Configuration	6" x 9" 3-way	6.5" 3-way	5.25" 2-way	4" 2-way	5" x 7" 3-way
Power Handling	80w	60w	50w	40w	60w
System Impedance	4-Ohm	4-Ohm	4-Ohm	4-Ohm	4-Ohm
Frequency Response	50-20kHz	80-20kHz	90-20kHz	100-20kHz	75-20kHz
Efficiency (1w/1m dB)	90dB	89dB	87dB	85dB	89dB
Woofer Mounting Depth	4.25"	3.125"	3.125"	2.875"	2.625"

3 ohm Impedance
Polypropylene Cone
Butyl Rubber Surround
1" Aluminum Coil Former
Mylar Midrange & Tweeter
Steel Basket

SIGNAL PROCESSORS



- E.DZ
1/2 DIN Dual Zone Equalizer
- 2 Selectable Balanced RCA Inputs w/ Input Gain
 - Four 18dB Front Bands: 125Hz, 500Hz, 3.5kHz, 12kHz
 - Three 18dB Rear Bands: 50Hz, 600Hz, 6.3kHz
 - Independent Subwoofer Level Control
 - Selectable Subwoofer LPF: 32Hz, 64Hz, 125Hz
 - Up to 8V Front, Rear, & Subwoofer RCA Outputs
 - Fader Control
 - Red Backlit Control Knobs



- BP.8
Bass Signal Processor
- Variable 27-63Hz Bass EQ
 - Variable Boost Q
 - Boost Voltage Limitation Control
 - Selectable 35,50,80Hz Subsonic Filter
 - 10V Max Line Driver
 - Balanced Signal Inputs, Up To 15 Volts
 - Selectable Signal Grounding Mode
 - Selectable Ground Isolation
 - Dash Mount Remote Gain Control
 - THD: .003%
 - S/N Ratio: 130dB



- INT-5B
OEM Integration w/ Bass Processor
- 5 Channel Hi-Level Input
 - 4v-30v Input Sensitivity
 - Variable 30-80Hz Bass EQ
 - Variable 0-12dB Bass Boost
 - Variable Boost Q
 - Subwoofer Input Selector
 - 15-50Hz Subsonic Filter

CAPACITORS

- C.2F
2 Farad Power Capacitor

- C.3F
3 Farad Power Capacitor
- 12-16 DCV Operation
 - Chrome Finish w/ Gloss Black Accents
 - Red Digital Voltage Display
 - Bolt Post for Any Gauge Ring Terminals



- C.6F
6 Farad Hybrid Power Capacitor

- C.10F
10 Farad Hybrid Power Capacitor
- 12-16 DCV Operation
 - Chrome Finish w/ Gloss Black Accents
 - Red Digital Voltage Display
 - Bolt Post for Any Gauge Ring Terminals



TWEETERS



Flush, Surface, or Angle Mounting
Adjustable Eyeball Design
Built-in 12 dB In-Line Crossover

	T.2
Peak Power Handling	100w
Diaphragm Size/Material	1.00" Mylar
Impedance	4-Ohm
Frequency Response	2kHz-21kHz
Efficiency (1w/1m dB)	94dB
Mounting Depth	0.75"



1.25" Aluminum Inverted Dome Tweeter
Chassis Integrated Phase Plug
High Strength Neodymium Magnet
Flush or Surface Mounting Hardware Included
12dB/Octave Passive Crossover Included
PTC Tweeter Protection Switch

	T.5
Peak Power Handling	80w
Diaphragm Size/Material	1.00" Aluminum
Impedance	4-Ohm
Frequency Response	15kHz-20kHz
Efficiency (1w/1m dB)	93dB
Mounting Depth	0.625"



COMPRESSION TWEETERS



PT.2
(pair)



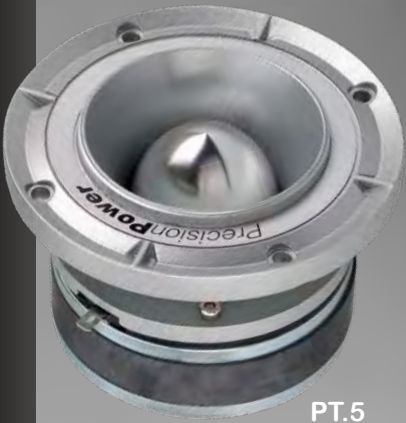
PT.4
(pair)



PT.52



PT.54



PT.5

TWEETERS	PT.2	PT.4	PT.5	PT.52	PT.54
Peak Power Handling	90w	100w	100w	100w	100w
Diaphragm Size/Material	1.00" Titanium	1.00" Aluminum	1.75" Aluminum	2.00" Composite	2.00" Composite
Impedance	4-Ohm	4-Ohm	4-Ohm	4-Ohm	4-Ohm
Frequency Response	3kHz-20kHz	3kHz-20kHz	4kHz-20kHz	3kHz-20kHz	3kHz-20kHz
Efficiency (1w/1m dB)	109dB	109dB	107dB	105dB	107dB
Mounting Depth	1.125"	1.50"-2.00"	2.50"	2.25"	3.25"

PRO AUDIO MIDRANGE



MIDRANGE	PM.654 PM.658	PM.804 PM.808	PM.104
Size	6.50"	8.00"	10.00"
Peak Power Handlin	170w	200w	350w
Impedance	4-Ohm/8-Ohm	4-Ohm/8-Ohm	4-Ohm
Frequency Response	150-10kHz	120-8kHz	100-5kHz
Efficiency (1w/1m dB)	96dB	97dB	98dB
Mounting Depth	2.75"	3.25"	4.25"

2-WAY PRO AUDIO SPEAKER WITH COMPRESION TWEETER!



2-WAY COAXIAL	PM2.654	PM2.804	PM2.104
Size	6.50"	8.00"	10.00"
Peak Power Handlin	225w	300w	450w
Impedance	4-Ohm	4-Ohm	4-Ohm
Frequency Response	150-8kHz	140-6kHz	85-4.5kHz
Efficiency (1w/1m dB)	96dB	98dB	99dB
Mounting Depth	3.125"	3.50"	4.00"

PRO2.XVR
Crossover for all PM2
2-way Pro Audio Speakers
w/ Compression Tweeter



NEODYMIUM	PM654NX	PM.804NX
Size	6.50"	8.00"
Peak Power Handlin	150w	350w
Impedance	4-Ohm	4-Ohm
Frequency Response	180-10kHz	135-8kHz
Efficiency (1w/1m dB)	97dB	98dB
Mounting Depth	2.75"	3.25"