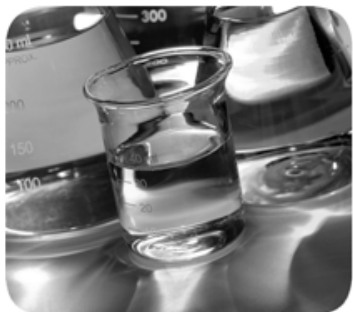


## RSLogix 5 Getting Results Guide



## Important user information

Read this document and the documents listed in the additional resources section about installation, configuration, and operation of this equipment before you install, configure, operate, or maintain this product. Users are required to familiarize themselves with installation and wiring instructions in addition to requirements of all applicable codes, laws, and standards.

Activities including installation, adjustments, putting into service, use, assembly, disassembly, and maintenance are required to be carried out by suitably trained personnel in accordance with applicable code of practice. If this equipment is used in a manner not specified by the manufacturer, the protection provided by the equipment may be impaired.

In no event will Rockwell Automation, Inc. be responsible or liable for indirect or consequential damages resulting from the use or application of this equipment.

The examples and diagrams in this manual are included solely for illustrative purposes. Because of the many variables and requirements associated with any particular installation, Rockwell Automation, Inc. cannot assume responsibility or liability for actual use based on the examples and diagrams.

No patent liability is assumed by Rockwell Automation, Inc. with respect to use of information, circuits, equipment, or software described in this manual.

Reproduction of the contents of this manual, in whole or in part, without written permission of Rockwell Automation, Inc., is prohibited.

Throughout this manual, when necessary, we use notes to make you aware of safety considerations.



**WARNING:** Identifies information about practices or circumstances that can cause an explosion in a hazardous environment, which may lead to personal injury or death, property damage, or economic loss.



**ATTENTION:** Identifies information about practices or circumstances that can lead to personal injury or death, property damage, or economic loss. Attentions help you identify a hazard, avoid a hazard, and recognize the consequence

---

**Important:**

Identifies information that is critical for successful application and understanding of the product.

---

Labels may also be on or inside the equipment to provide specific precautions.



**SHOCK HAZARD:** Labels may be on or inside the equipment, for example, a drive or motor, to alert people that dangerous voltage may be present.



**BURN HAZARD:** Labels may be on or inside the equipment, for example, a drive or motor, to alert people that surfaces may reach dangerous temperatures.



**ARC FLASH HAZARD:** Labels may be on or inside the equipment, for example, a motor control center, to alert people to potential Arc Flash. Arc Flash will cause severe injury or death. Wear proper Personal Protective Equipment (PPE). Follow ALL Regulatory requirements for safe work practices and for Personal Protective Equipment (PPE).

---

**Preface**

Purpose of this document.....9  
Intended audience.....9  
Document conventions.....9  
Online help.....9  
Training.....9  
Commonly used terms.....9  
Legal Notices..... 10

**Chapter 1**

**Installing and activating  
RSLogix 5**

System requirements..... 13  
    Hardware requirements..... 13  
    Software requirements..... 14  
Activation..... 14  
Installing RSLogix 5 software..... 15  
    Installing RSLinx Classic Lite software..... 15  
    Installing the FactoryTalk Services Platform..... 16  
    Installing the FactoryTalk Activation Client..... 17  
        Supported activation types for RSLogix 5..... 18  
    Installing the Security Server Client..... 18  
    Installing RSLogix 5 software..... 19  
Upgrading the FactoryTalk Platform..... 24  
    Upgrading a Stand-Alone System on a Single Computer..... 24  
    Upgrading a Distributed FactoryTalk System on a Network..... 26  
        Upgrade FactoryTalk Services Platform on the Network Directory Server  
        Computer..... 26  
        Add computer accounts to the Network Directory Server..... 27  
        Upgrade FactoryTalk Services Platform on the Remote Client  
        Computers..... 27  
Importing a Security Configuration from the Rockwell Software Security Server  
into FactoryTalk Security..... 28  
Configuring FactoryTalk Security for RSLogix 5..... 30  
    Setting Security Policies for RSLogix 5..... 32  
    Securing Actions for RSLogix 5..... 34  
        Setting security for actions globally..... 38  
        Setting security for actions on a controller basis..... 39  
Starting RSLogix 5 software..... 40  
Troubleshooting installation..... 40

	<b>Chapter 2</b>	
<b>Getting started with RSLogix 5</b>	Overview of RSLogix 5.....	43
	Navigating RSLogix 5.....	43
	Opening multiple program files .....	45
	Splitting the viewing window .....	45
	Opening multiple program windows .....	46
	Quick Start steps for development .....	46
	Step 1 Configure a driver in RSLinx Classic.....	46
	Step 2 Configure system communications.....	49
	Step 3 Create a new project or open an existing project.....	50
	New Project .....	50
	Existing Project .....	51
	Step 4 Add the chassis and I/O .....	51
	Step 5 Create program and data table files.....	52
	Step 6 Enter a logic program .....	53
	Step 7 Add documentation to your logic instructions.....	54
	Step 8 Verify the program logic .....	55
	Step 9 Configure the communication channels.....	55
Step 10 Download and go online .....	56	
Step 11 Monitor data files .....	56	
Step 12 Search and replace instructions.....	57	
Step 13 Print a report .....	58	
Quick Start steps for maintenance.....	59	
Step 1 Establish communications with the processor.....	59	
Step 2 Go online .....	59	
	<b>Chapter 3</b>	
<b>Opening A.I. and 6200 project files in RSLogix 5</b>	Opening a Project File.....	61
	Special Considerations.....	61
	Retrieve the PLC-5 A.I. Series documentation database .....	61
	Open a 6200 Series PLC-5 Project .....	62
	<b>Chapter 4</b>	
<b>Hardware configuration</b>	The chassis table .....	63
	Adding and configuring a chassis .....	63
	Configuring a PLC or I/O adapter.....	64
	Adding I/O modules .....	65
	Configuring I/O.....	67

## Importing or exporting the documentation database

### Chapter 5

Import database .....	69
PLC-5 A.I. Series project documentation database.....	69
6200 Series PLC-5 project documentation database .....	70
RSLogix 5 documentation database .....	70
CSV (Comma Separated Values) file .....	71
ASCII delimited text file.....	71
Export database.....	72
RSLogix 5 ASCII delimited text file examples.....	73
Address symbols and descriptions (.EAS files).....	73
Page title and rung descriptions (.ERP files).....	73
Instruction comments (.EIC files).....	73
Symbol groups (.ESG files).....	74
A.I. ASCII delimited text file examples .....	74
Address symbols and descriptions (.EAS files).....	74
Page title and rung descriptions (.ERP files).....	74
AB 6200 ASCII delimited text file .....	74
Key Words.....	75
CSV (Comma Separated Values) format .....	75

## More about entering ladder logic

### Chapter 6

Backing up your work.....	77
Crash recovery.....	78
Shortcuts for ladder editing.....	78
Quick Key Mapping .....	78
ASCII editing.....	79
Example ASCII rung .....	80
Dot commands .....	80
Other shortcuts and tips .....	81
Selecting multiple rungs .....	81
Jumping to a rung.....	81
Keyboard shortcuts .....	81
Addressing .....	81
Branching.....	82
Add a branch .....	82
Move a branch.....	82
Expand a branch .....	82
Nested branches.....	82
Parallel branches .....	82
Copy branch leg.....	82
Copy entire branch structure.....	82
Delete a branch .....	82
Undo operation .....	82
Online editing.....	83

Lower-case zone markers .....	83
Upper-case zone markers .....	84
Online editing example .....	84
Online editing restrictions.....	85
Configuring MCPs (Main Control Programs).....	85
Configuring Interrupts .....	86
STI (Selectable Timed Interrupt).....	86
PII (Processor Input Interrupt).....	86
Using the structured text editor .....	86
Using the sequential function chart (SFC) editor.....	87

## Chapter 7

### More about monitoring data

Cross Reference .....	90
Forces.....	90
Custom Data Monitor (CDM) .....	91
Recipe Monitor.....	91
Custom Graphical Monitor .....	92
Histograms .....	93
Trends.....	94

## Chapter 8

### Saving and loading processor memory in PC5 libraries

Things to remember about library files.....	97
Exporting libraries.....	97
Importing libraries .....	98
Sample PC5 file .....	99
Creating or editing a PC5 ASCII text file.....	103
Specifying the program header .....	104
Specifying the data table.....	104
Specifying the project name .....	104
Specifying the program files .....	105
Specifying the force table .....	105
Specifying the channel configuration.....	105
Annotating the PC5 file.....	106

## Chapter 9

### Features in RSLogix 5 Professional

Microsoft Visual Basic for Applications support.....	107
Custom Graphical Monitor .....	107
Editing project databases using Microsoft Excel.....	107
Logic Trace .....	108
How logic trace works .....	109

## Chapter 10

### Getting the information you need

RSLogix 5 online help .....	111
Using the Contents, Index, and Find tabs.....	111
Contents.....	111
Index .....	112
Find .....	112
Instruction set help .....	112
Keyboard shortcuts .....	112
User Application Help.....	113
Printing a popup help topic.....	113
Learning more about using online help .....	114
RSLogix 5 training .....	114
Classroom training.....	114
Interactive training.....	115
Technical support services.....	115
When you call .....	115

## Appendix A

### EVMOVE Activation

Protecting your activation files .....	118
Activating RSLogix 5.....	118
Running the activation utilities.....	119
Finding more information about activation .....	119
Some common questions.....	119
My activation files were damaged. What should I do?.....	120
I accidentally deleted the software folder on my hard drive. Do I need to call Rockwell Software for replacement activation files? .....	120
Why can't I move activation to a new floppy disk on a Windows NT system? .....	120

### Index





## Purpose of this document

This Getting Results book provides you with information on how to install and navigate the RSLogix™ 5 software. This guide includes troubleshooting information and tips on how to use RSLogix 5 effectively. It also explains how to access and navigate the online help.

## Intended audience

We assume that you are a control engineer familiar with:

- IBM®-compliant personal computers
- Microsoft® Windows® operating systems
- Allen-Bradley® Company's PLC-5® programmable controllers
- RSLinx® communications software

## Document conventions

This manual uses the following typographical conventions:

- **[Bold]** characters in brackets represents keystrokes used to execute a function. When more than one key is to be pressed at a time, the keys are separated by a plus sign. For example, **[Ctrl + v]** means hold down the **[Ctrl]** key and press the **[v]** key.
- **Bold** characters represent menu choices.
- `TEXT IN THIS FONT` represents characters that you should type.

## Online help

If you need help when using RSLogix 5, use any of the following methods:

- Choose **Help** from the menu bar.
- Click **Help** in any **RSLogix 5** dialog box.
- Press **[F1]** on any instruction, dialog box, or window view.

For more information about the online help, see [RSLogix 5 online help](#) on [page 111](#).

## Training

Rockwell Software offers both classroom training and a computer-based training program for RSLogix 5 software. For more information, see [RSLogix 5 training](#) on [page 114](#).

## Commonly used terms

The following table defines terms commonly used in this book.

This term:	Represents this concept:
activation files	Hidden files in the root folder that allow the software to run. The software checks for these files before you have access to offline or online programming.
archive	Backups of project files. Can be used for version control.
back up	To make a copy of the current file before replacing that file with an updated version.

<b>This term:</b>	<b>Represents this concept:</b>
download	Restore a specified file to a specified processor. For example, when you download the current project file, you copy the file to a specified processor so the processor can begin running that file.
library	A file into which you store or from which you retrieve portions of ladder logic.
mnemonic	A term, usually an abbreviation that is easy to remember. PLC-5 instructions are typically represented by a 3-letter mnemonic.
project	All of the files that make up the PLC-5 logic program including the documentation files.
upload	Access a PLC-5 processor and save a copy of the project.
verification	An analysis of the ladder program files that results in the display of any programming errors.
zone	Portion of the ladder logic identified by a marker indicating the edited state of the file.

## Legal Notices

### Copyright notice

Copyright © 2019 Rockwell Automation Technologies, Inc. All Rights Reserved.  
Printed in USA.

This document and any accompanying Rockwell Software products are copyrighted by Rockwell Automation Technologies, Inc. Any reproduction and/or distribution without prior written consent from Rockwell Automation Technologies, Inc. is strictly prohibited. Please refer to the license agreement for details.

### End User License Agreement (EULA)

You can view the Rockwell Automation End-User License Agreement ("EULA") by opening the License.rtf file located in your product's install folder on your hard drive.

### Open Source Licenses

The software included in this product contains copyrighted software that is licensed under one or more open source licenses. Copies of those licenses are included with the software. Corresponding Source code for open source packages included in this product are located at their respective web site(s).

Alternately, obtain complete Corresponding Source code by contacting Rockwell Automation via the Contact form on the Rockwell Automation website:

[http://www.rockwellautomation.com/global/about-us/contact/contact\\_page](http://www.rockwellautomation.com/global/about-us/contact/contact_page)

Please include "Open Source" as part of the request text.

A full list of all open source software used in this product and their corresponding licenses can be found in the OPENSOURCE folder included with the Release Notes. The default installed location of these licenses is C:\Program Files

(x86)\Common Files\Rockwell\Help\RSLogix  
5\ReleaseNotes\OPENSOURCE\index.htm.

### **Trademark Notices**

Allen-Bradley, Rockwell Automation, and Rockwell Software are trademarks of Rockwell Automation, Inc.

Any Rockwell Automation software or hardware not mentioned here is also a trademark, registered or otherwise, of Rockwell Automation, Inc.

### **Other Trademarks**

All other trademarks are the property of their respective holders and are hereby acknowledged.

Trademarks not belonging to Rockwell Automation are property of their respective companies

### **Warranty**

This product is warranted in accordance with the product license. The product's performance may be affected by system configuration, the application being performed, operator control, maintenance, and other related factors. Rockwell Automation is not responsible for these intervening factors. The instructions in this document do not cover all the details or variations in the equipment, procedure, or process described, nor do they provide directions for meeting every possible contingency during installation, operation, or maintenance. This product's implementation may vary among users.

This document is current as of the time of release of the product; however, the accompanying software may have changed since the release. Rockwell Automation, Inc. reserves the right to change any information contained in this document or the software at any time without prior notice. It is your responsibility to obtain the most current information available from Rockwell when installing or using this product.

### **Contact Rockwell Automation**

Customer Support Telephone — 1.888.382.1583

Online Support — <http://www.rockwellautomation.com/support/>



# Installing and activating RSLogix 5

This chapter explains how to install, activate, and start RSLogix 5 software.

This chapter includes information on the following:

- System requirements
- Installation methods
- Activation overview and methods
- Installation and activation procedure
- Starting procedures
- Troubleshooting installation and activation

After installing the software, we recommend that you read the Release Notes. The Release Notes may contain more up-to-date information than was available when this document was published. To view the Release Notes, start the RSLogix 5 software; then, choose **Help > RSLogix Release Notes**.

---

**Important:** To install RSLogix 5, you must have administrator privileges for the computer. For more information, contact your system administrator.

---

## System requirements

To use RSLogix 5 effectively, your personal computer must meet the following hardware and software requirements

### Hardware requirements

- Intel® Core 2 Duo, 2.8 Ghz processor
- 2 GB of RAM or more
- at least 2.5 GB of available hard disk space
- 256-color SVGA graphics adapter with 800 x 600 resolution
- A DVD-ROM drive
- any Windows-compatible mouse or other pointing device

We recommend a 2.8 Ghz Core computer with 2 GB RAM or greater for optimal performance.

## Software requirements

RSLogix 5 runs on the following Windows or Windows Server® operating systems:

- Windows 7 Professional with Service Pack 1 (32-bit, 64-bit)
- Windows 7 Enterprise with Service Pack 1 (32-bit, 64-bit)
- Windows 10 Professional (64-bit)
- Windows 10 Enterprise (64-bit)
- Windows 10 IoT Enterprise 2016 Long Term Servicing Branch (LTSB) Embedded
- Windows Server 2012 Standard (64-bit)
- Windows Server 2012 Datacenter (64-bit)
- Windows Server 2012 R2 Standard (64-bit)
- Windows Server 2012 R2 Datacenter (64-bit)
- Windows Server 2016 Standard (64-bit)
- Windows Server 2016 Datacenter (64-bit)
- Windows Server 2019 Standard (64-bit)
- Windows Server 2019 Datacenter (64-bit)

---

**Important:** For the latest information regarding software platform support, refer to <http://www.rockwellautomation.com/compatibility/#/scenarios>.

---

## Activation

Software activation is a process by which you identify that you have installed a legitimate copy of RSLogix 5 on your computer. Activation works through an activation file that indicates to the software that you are using the software legitimately.

There are two forms of activation supported by RSLogix 5:

- **EVMOVE activation**, which uses a master disk to deliver an activation file to your computer
- **FactoryTalk Activation**, which allows you to download an activation file through an Internet connection

For new installations of RSLogix 5, you must use FactoryTalk Activation to activate the software.

If you are upgrading a current installation of RSLogix 5, you may continue to use your EVMOVE activation. However, future versions of RSLogix 5 will require you to use FactoryTalk Activation. Rockwell Software advises you to activate your software using FactoryTalk Activation now.

**Tip:** Future versions of RSLogix 5 will require using FactoryTalk Activation to activate the software. Rockwell Software strongly suggests that you activate your software with FactoryTalk Activation now to prevent difficulties with future versions of the software.

## Installing RSLogix 5 software

Installing RSLogix 5 software involves installing and configuring the following software packages:

- **Installing RSLinx Classic Lite** software (if you do not have RSLinx Classic already installed on your computer)
- **Installing the FactoryTalk® Services Platform** (if you intend to use FactoryTalk® Security to control access to features of RSLogix 5 – in this case, you will also need to configure FactoryTalk Security to allow users to access the software)
- **Installing the FactoryTalk Activation Client** (if you have a new RSLogix 5 installation or need to upgrade your activation to FactoryTalk Activation. If you intend to continue using EVMOVE activation for now, you do not have to install this software.)
- **Installing the Security Server Client** (if you intend to use the Rockwell Software Security Server to control access to features of RSLogix 5 – in this case, you will also need to configure your Security Server to allow users to access the software. Rockwell Software advises that you use FactoryTalk Security instead of the Security Server to provide security functions)
- **Configuring FactoryTalk Security** to permit access to features of RSLogix 5
- **Installing RSLogix 5 software**

## Installing RSLinx Classic Lite software

RSLinx Classic Lite provides communication between the programmable controller and a personal computer.

**Tip:** If you have RSLinx Classic 2.51 or later installed, you do not need to install RSLinx Classic Lite.

### To install RSLinx Classic Lite software

1. Log onto the computer as an administrator or as a user with administrative privileges.
2. Insert the RSLogix 5 CD-ROM into the CD-ROM drive. The installation program should start automatically. If it does not, open the installation disk with Windows Explorer™ and run AUTORUN.EXE.
3. Click **Required Steps**, and then click **Install RSLinx Lite**.

## Installing the FactoryTalk Services Platform

4. Follow the directions that appear on the screen.

---

**Important:** If you are upgrading the FactoryTalk Services Platform, see [Upgrading the FactoryTalk Platform](#) on [page 24](#) for important information.

---

**Tip:** The FactoryTalk Services Platform is required for using FactoryTalk Security with RSLogix 5. It does not serve any other purpose with regard to RSLogix 5, however, it is used with a variety of other Rockwell Software products.  
If you have already installed the FactoryTalk Services Platform for the current release (the CPR number indicates the release), you do not need to install it again.

### To install the FactoryTalk Services Platform

1. Log onto the computer as an administrator or as a user with administrative privileges.
2. Insert the RSLogix 5 CD-ROM into the CD-ROM drive. The installation program should start automatically. If it does not, open the installation disk with Windows Explorer and run AUTORUN.EXE.
3. Click **Required Steps**, and then click **Install FactoryTalk® Components**.
4. Click **Install FactoryTalk Services Platform**.
5. Follow the on-screen instructions to install the FactoryTalk Services Platform.

**Tip:** The setup program will ask if you want to install the FactoryTalk® Administration Console. The Administration Console allows you to configure your FactoryTalk® Directory. You will need to have the Administration Console available on at least one computer so you can configure FactoryTalk Security (and perform other tasks in the FactoryTalk Directory).  
If you will be using FactoryTalk Security only locally, you must install the Administration Console.

6. After the FactoryTalk Services Platform is installed, the FactoryTalk Directory Configuration Wizard starts. This wizard allows you to configure your FactoryTalk Directory.

On the first screen of the FactoryTalk Directory Configuration Wizard, you need to choose whether you want to install the FactoryTalk Network Directory, the FactoryTalk Local Directory, or both. If you will be using the computer to access another FactoryTalk Directory Server for FactoryTalk Security, or if other computers will be accessing your computer for FactoryTalk Security, you must install the FactoryTalk Network Directory.



If you will be using FactoryTalk Security only on the local computer – with no other computers accessing the computer for security information – you can install the FactoryTalk Local Directory.

You can install both the FactoryTalk Network Directory and the FactoryTalk Local Directory.

**Tip:** Using FactoryTalk Security on the local directory does not require activation. On a network directory, FactoryTalk Security does not require activation for ten or fewer users. If you intend to have more than ten users (including administrative users) on a network directory, you must purchase and activate FactoryTalk Security licenses for the additional users.

## Installing the FactoryTalk Activation Client

**Tip:** The FactoryTalk Activation Client is used to activate RSLogix 5 software. If you have a current installation of RSLogix 5 that uses EVMOVE activation, you may continue to do so. However, future versions of RSLogix 5 will no longer support EVMOVE activation. Rockwell Software advises you to upgrade to FactoryTalk Activation to avoid problems with future releases of RSLogix 5.

If you have already installed the FactoryTalk Activation Client for the current release (the CPR number indicates the release), you do not need to install it again.

### To install the FactoryTalk Activation Client

1. Log onto the computer as an administrator or as a user with administrative privileges.
2. Insert the RSLogix 5 CD-ROM into the CD-ROM drive. The installation program should start automatically. If it does not, open the installation disk with Windows Explorer and run AUTORUN.EXE.
3. Click **Required Steps**, and then click **Install FactoryTalk Components**.
4. Click **Install FactoryTalk Activation Client**.
5. Follow the on-screen instructions to install the FactoryTalk Activation Client.
6. After the installation is finished, the FactoryTalk Activation Tool and FactoryTalk Activation Wizard both launch. The FactoryTalk Activation Tool allows you to manage the activations on your computer and obtain new activations. The FactoryTalk Activation Wizard is a simpler method for obtaining activations.

Use the Activation Tool or the Activation Wizard to obtain your activation for RSLogix 5. If you need help in obtaining activations, or if you need to

learn more about the process of activating Rockwell Software products, click **Start > Programs > Rockwell Software > FactoryTalk Activation > FactoryTalk Activation Help** (or click **Help** in the FactoryTalk Activation Tool).

**Tip:** Your computer must be connected to the Internet to be able to obtain activations directly using the Activation Tool or Activation Wizard. You can obtain the activation using a different computer than the one you are actually activating. It is also possible to obtain activations by phone or fax. See the FactoryTalk Activation help file for more information (click **Start > Programs > Rockwell Software > FactoryTalk Activation > FactoryTalk Activation Help**).

### Supported activation types for RSLogix 5

RSLogix 5 supports the following types of **FactoryTalk Activation**:

- **Node-locked**, either to a computer or to a dongle. With this activation type, the software is locked to a specific computer or to a dongle that can be moved from one computer to another.
- **Concurrent**, where the activation resides on a FactoryTalk Activation server. Computers running RSLogix 5 then use the activations from the server, releasing the activations when they are not in use. Computers can also "borrow" activations if they are not going to remain connected to the network.

For more information about activation types, see the FactoryTalk Activation Help file (click **Start > Programs > Rockwell Software > FactoryTalk Activation > FactoryTalk Activation Help** (or click **Help** in the FactoryTalk Activation Tool).

### Installing the Security Server Client

**Tip:** Install the Security Server Client software only if you are already using a Rockwell Software Security Server to control access to features of RSLogix 5. If you do not already have a Rockwell Software Security Server running in your facility and want to secure access to features of RSLogix 5, Rockwell Software advises you to use FactoryTalk Security instead of the Security Server. If you already have a Security Server in your facility, you may install the Security Server Client software. However, Rockwell Software advises that future releases of RSLogix 5 will no longer support the Security Server. Security functions will be supplied through FactoryTalk Security.

#### To install the Security Server Client

1. Log onto the computer as an administrator or as a user with administrative privileges.

2. Insert the RSLogix 5 CD-ROM into the CD-ROM drive. The installation program should start automatically. If it does not, open the installation disk with Windows Explorer and run AUTORUN.EXE.
3. Click **Optional Steps**, and then click **Security Server Client**.
4. Follow the on-screen instructions for installing the Security Server Client.
5. During the Security Server Client installation, the **Rockwell Software's Security Server Definitions** window appears. This window allows you to define what Security Server(s) the client will access for security information. If you need help configuring a list of servers, click **Help** on this window. If you do not know which Security Server(s) to use, ask your Security Server administrator.
6. When the **Enable/Disable Security Keys** window appears:
  - a. If you are certain that you have a functioning Security Server that is configured to allow users access to the features of RSLogix 5, check the **RSLogix 5** or **RSLogix 5 Pro** boxes (the box you need to check depends on whether you are installing RSLogix 5 or RSLogix 5 Professional). Checking these boxes indicates that you want to enable security for the software.

---

**Important:** Do not enable security unless you are certain that the Security Server will be configured to permit user access to RSLogix 5 actions. If the Security Server is not configured, users will not be able to use RSLogix 5!

---
  - b. Do not check boxes for any other product. (If a box is already checked, you will not be able to uncheck it.)

## Installing RSLogix 5 software

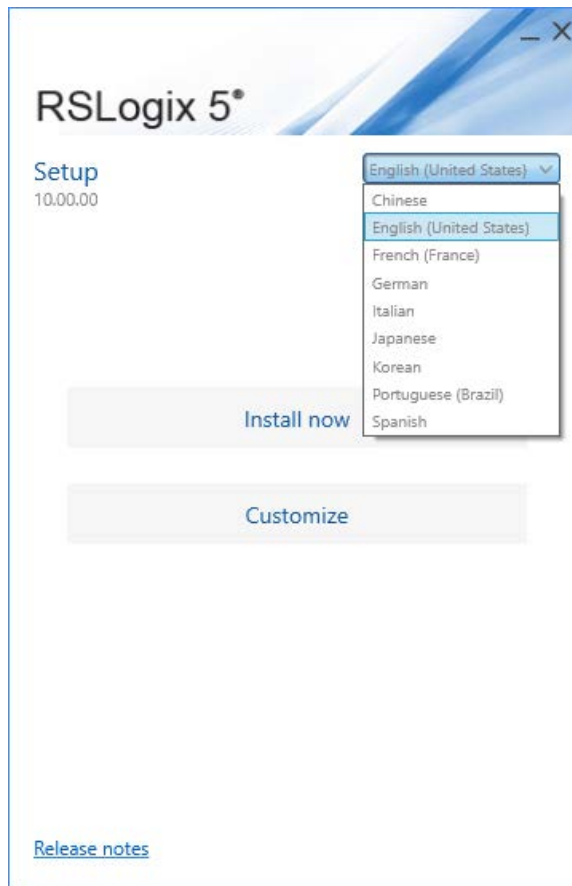
To install RSLogix 5 software, perform the following steps

The following steps use RSLogix 5 installation as an example.

To install RSLogix 5:

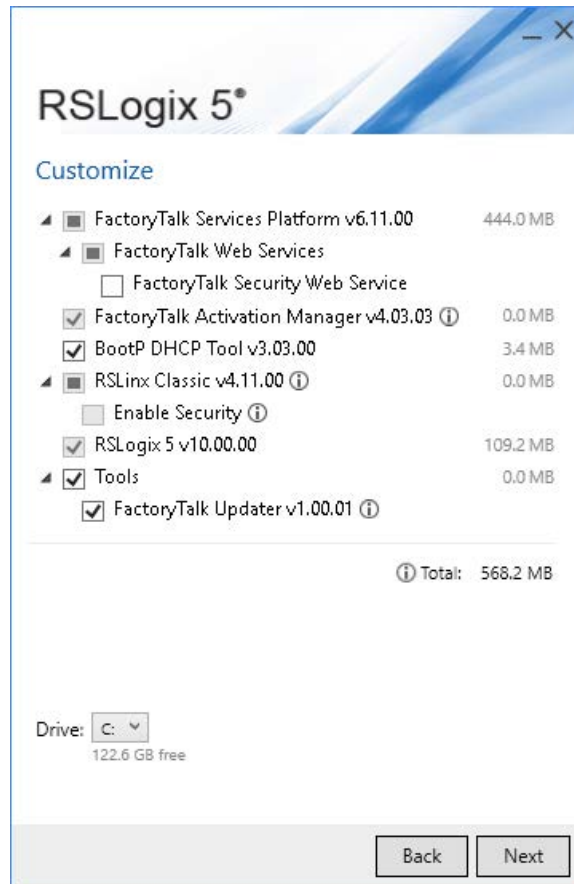
1. Log on to the computer as an administrator or as a user with administrative privileges.
2. Insert the installation DVD into the computer's DVD drive, or double-click **Setup.exe** within the installation packages.

- (optional) On the **Welcome** page, select a language to be shown during the installation process. By default, your system language is selected.



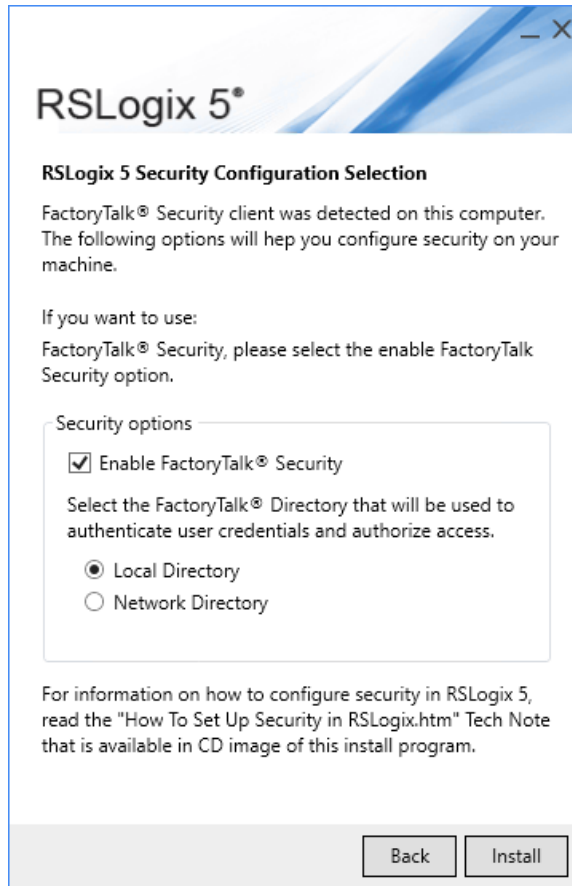
- To install all components available in the selected software using the recommended settings, click **Install now** and go to step 11.
- To select which components to install, click **Customize**.
- On the **Customize** page, select the components. There may be two options shown:

- **Mandatory** (grayed-out and selected check box) indicates software that will be automatically installed as part of the selected application.
- **Optional** (clear check box) indicates software that you may wish to include depending on your system. Select the box to include the software during installation.



7. Select the location for Rockwell Automation software. The default location is C:\.
8. Click **Next**. The **RSLogix 5 Security Configuration Selection** page opens only if you are installing RSLogix 5.

9. In the **Security options** box, select the options as needed. If you do not want to use FactoryTalk Security, clear the **Enable FactoryTalk® Security** check box.



**Important:** If you select the **Enable FactoryTalk® Security** check box in the installation process, you need to modify the FactoryTalk Security settings to restrict access to the RSLogix 5 functions. For information about Configuring FactoryTalk Security, see [Configuring FactoryTalk Security for RSLogix 5](#) on [page 30](#).

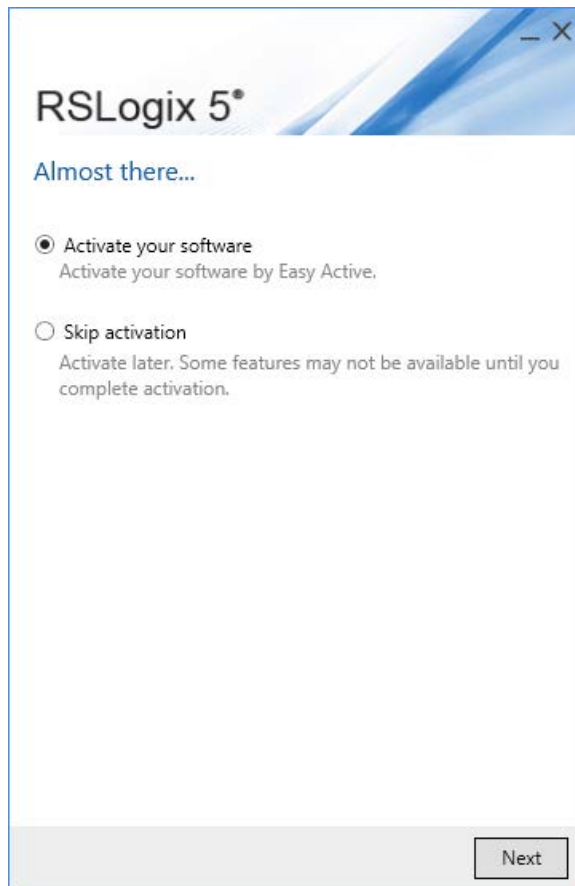
If you accidentally turn on FactoryTalk Security and want to turn it off, you must uninstall RSLogix 5, and then reinstall it.

If you have used the Rockwell Software Security Server to control user access to functions of RSLogix 5 and you have turned on FactoryTalk Security, you can import your Security Server database into FactoryTalk Security.

For more information, see [Importing a Security Configuration from the Rockwell Software Security Server into FactoryTalk Security](#) on [page 28](#).

10. Click **Install**.
11. In the **End User License Agreements** dialog box, click **Accept all** to start the installation, or click **Decline** to return to the last step.

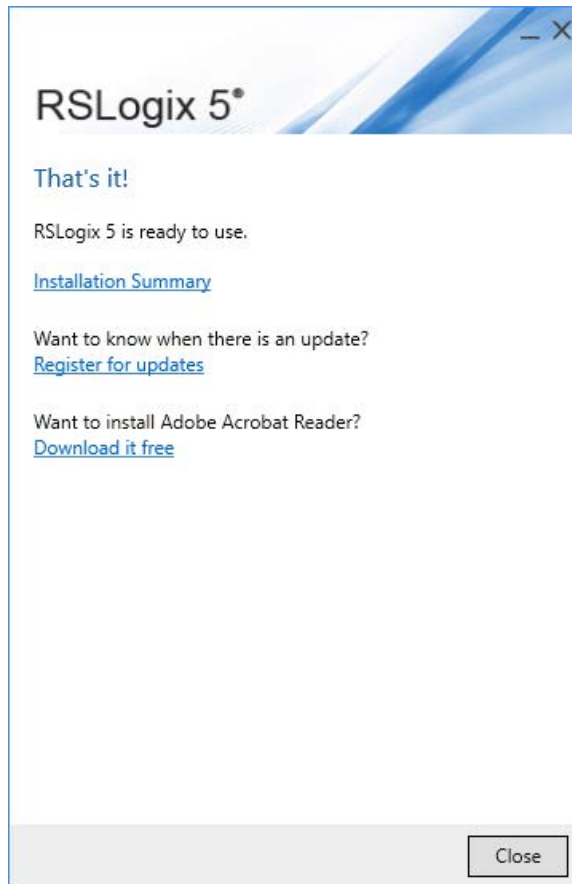
12. After the installation completes, the **Activation** page opens. You can activate the software now or later.



13. To proceed directly to activate the installed software, select **Activate your software** and then click **Next**, the **Software Activation** dialog box opens.
  - a. In the **Serial number** box, enter the serial number.
  - b. In the **Product key** box, enter the product key.
  - c. In the **Earliest version** box, select the earliest version of RSLogix 5 you will use.
  - d. Select **Activate locally** or **Activate using a dongle**.
  - e. Click **Continue**.

You will be prompted to restart the computer after the activation.

14. To finish the installation without activation, select **Skip activation** and then click **Next**.



- To view the installation details, click **Installation Summary**.
- To receive the latest product updates and patch notification, click **Register for updates and subscribe**.
- To install the latest version of Adobe® Acrobat® Reader®, click **Download it free** and follow the on-screen instructions.

## Upgrading the FactoryTalk Platform

If you are upgrading the FactoryTalk Platform, there are procedures you must follow to ensure that the platform will function properly.

## Upgrading a Stand-Alone System on a Single Computer

To upgrade the automation system software on a stand-alone system that uses a FactoryTalk Local Directory on a single computer

---

**Important:** Uninstall all FactoryTalk-enabled products before uninstalling and reinstalling the FactoryTalk Services Platform.

---

1. On the stand-alone computer where an earlier version of FactoryTalk Services Platform is installed, shut down all running software products, and



then **uninstall all Rockwell Software products** that depend on FactoryTalk, such as RSVIEW® SE Station, RSVIEW® ME, RSLinx Classic, RSLogix products, and so on.

2. Install FactoryTalk Services Platform v2.10.02.

The installation program prompts you for confirmation, and then un-installs the earlier version of the FactoryTalk software before installing the new version.

3. When the installation finishes, the FactoryTalk Directory Configuration Wizard runs. On the first screen, click **Next** to select the default option, **Configure FactoryTalk Local Directory**.
4. At the prompt to create an administrator account for this Local Directory, either:
  - Click **Next** to accept default user name and leave password blank — recommended if you plan to override security services.
  - Enter a user name and password — recommended if you plan to secure your system with FactoryTalk Security. Remember that the password is case sensitive.
5. Whether you accept the default user name and password entries or create your own, write this information down and keep it in a safe place. You will need these credentials to access the Local Directory and to log on to FactoryTalk® Administration Console.
6. At the prompt to select who has full access to the Local Directory, choose either:
  - **All users** — recommended if you plan to override security services.
  - **Only administrators** — recommended if you plan to secure your system with FactoryTalk Security.
7. When the FactoryTalk Directory Configuration Wizard finishes, install the software products that you plan to use in your stand-alone automation system.

All of the participating FactoryTalk-enabled software products must also be upgraded to versions that support Coordinated Process Release (CPR) 7. For details, consult each product's installation documentation.

## Upgrading a Distributed FactoryTalk System on a Network

To upgrade the automation system software on a distributed system that uses a FactoryTalk Network Directory across networked computers

1. Upgrade FactoryTalk Services Platform on the Network Directory Server computer
2. Add computer accounts to the Network Directory Server
3. Upgrade FactoryTalk Services Platform on the remote client computers

---

**Important:** Uninstall all FactoryTalk-enabled products before uninstalling and reinstalling the FactoryTalk Services Platform.

---

## Upgrade FactoryTalk Services Platform on the Network Directory Server Computer

1. On the computer that is hosting the FactoryTalk Network Directory Server, shut down all running software products, and then uninstall all Rockwell Software products that depend on FactoryTalk, such as RSView SE Distributed, RSLinx Classic, RSLinx® Enterprise, RSLogix products, RSSql™, and so on.

2. Install FactoryTalk Services Platform v2.10.02.

The installation program prompts for confirmation, and then un-installs the earlier version of the FactoryTalk software before installing the new version.

3. When the installation finishes, the FactoryTalk Directory Configuration Wizard runs. On the first screen, select the **Configure FactoryTalk Network Directory** check box, either accept or clear the **Configure FactoryTalk Local Directory** check box, and then click **Next** to continue.
  - In most cases, you do not need to configure a Local Directory when upgrading a distributed system. To configure only a Network Directory, clear the **Configure FactoryTalk Local Directory** check box.
  - If you plan to install RSBizWare Batch software on this computer, or if you plan to install other stand-alone software, then you need both a Network Directory and Local Directory configured on this computer. Leave the **Configure FactoryTalk Local Directory** check box selected.
4. At the prompt to create an administrator account for this Network Directory, enter a user name and password, and then write this information down and keep it in a safe place. You will need these credentials to access the Network Directory and to log on to FactoryTalk Administration Console.

- Passwords are case sensitive.
  - If you are configuring both a Network Directory and a Local Directory, you will be prompted to create separate administrator accounts for each directory.
5. At the prompt to select who has full access to the Network Directory, choose either:
    - **Only administrators** — recommended if you plan to secure your system with FactoryTalk Security.
    - **All users** — if you plan to override security by allowing all users full access to your system.
  6. Follow the steps in the wizard to finish configuring a Network Directory (and optional Local Directory) on this computer.
  7. Next, add a computer account to the Network Directory Server for each remote client computer that is part of your distributed system. See the steps below.

### Add computer accounts to the Network Directory Server

1. After installing FactoryTalk Services Platform and configuring a Network Directory, run **FactoryTalk Administration Console** from the Windows Start menu: **Start > Programs > Rockwell Software > FactoryTalk Administration Console**.
2. At the prompt to choose a FactoryTalk Directory, choose **Network**, and then log on, using the administrator user name and password you created when you configured the directory.
3. In the **Administration Console Explorer** pane, open **Network > System > Computers and Groups > Computers**. Create a computer account for each remote client computer that is part of your distributed automation system. For help, click **Help** on any dialog box.
4. Log off FactoryTalk Administration Console (**File > Log off**), and then log off FactoryTalk (**Start > Programs > Rockwell Software > FactoryTalk Tools > Log On to FactoryTalk**).
5. Next, upgrade FactoryTalk Services Platform on the client computers that are part of your networked system. See the steps below.

### Upgrade FactoryTalk Services Platform on the Remote Client Computers

1. **On each of the client computers in your distributed system**, shut down all running software products, and then uninstall all Rockwell Software products that depend on FactoryTalk, such as RSVIEW SE Distributed, RSLinx Classic, RSLinx Enterprise, RSLogix products, RSSql, and so on.

2. On each of the client computers, install FactoryTalk Services Platform v2.10.02.

The installation program prompts for confirmation, and then un-installs the earlier version of the FactoryTalk software before installing the new version.

3. When the installation finishes, the FactoryTalk Directory Configuration Wizard runs. On each screen, select the same options that you selected when you configured the FactoryTalk Network Directory on the Network Directory Server computer.
  - On the first screen, select the **Configure FactoryTalk Network Directory** check box, either accept or clear the **Configure FactoryTalk Local Directory** check box.
  - At the prompt to create an administrator account, enter the user name and password of the administrator account you created when you configured the directory on the Network Directory Server computer. (Passwords are case sensitive.)
4. Next, on the various client computers on your network, reinstall the software products that you plan to use in your distributed automation system.

All of the participating FactoryTalk-enabled software products must also be upgraded to versions that support Coordinated Process Release (CPR) 7. For details, refer to each product's installation documentation.

## Importing a Security Configuration from the Rockwell Software Security Server into FactoryTalk Security

If you have used the Rockwell Software Security Server to control access to user actions in RSLogix 5 and you have enabled FactoryTalk Security, you can import your security configuration from the Security Server into FactoryTalk Security. The import process will import your users, user groups, and ACLs from the Security Server, saving you time.

**Tip:** After importing your security configuration into FactoryTalk Security, uninstall the Security Server.

### To import the security configuration from the Rockwell Software Security Server into FactoryTalk Security

1. Because the import process writes to the FactoryTalk Directory, it is important that you backup your FactoryTalk Directory before beginning the import.

- a. Run the FactoryTalk Administration Console by clicking **Start > Programs > Rockwell Software > FactoryTalk Administration Console**.
  - b. Log onto the FactoryTalk Directory where you are using FactoryTalk Security.
  - c. Right-click the top-level object in the Explorer tree (this is the Network or Local object, depending on whether you are viewing the Network or Local directory), and then click **Backup**.
  - d. In the **Backup** window, type a name for the backup file in the **Specify archive name** field. In the **Specify archive location** field, enter the path to where you want to save the backup file. You can click the browse (...) button to browse for a folder.
  - e. Click **OK**.
2. In the Rockwell Software Security Server Configuration Explorer, export your security database to a file by clicking **File > Export Database**.
  3. After exporting the database, close the Configuration Explorer.
  4. Click **Start > Programs > Rockwell Software > FactoryTalk Tools > Import RSSecurity Configuration**. This starts the FactoryTalk Security Import utility.
  5. In the import utility, enter the path to the file you exported from the Security Server in the **Select RS Security Server backup database to import** field. If you prefer, click **Browse** and locate the file.
  6. From the **Destination Directory** pull-down list, select the FactoryTalk Directory that you are using with FactoryTalk Security (Network or Local).
  7. If you have actions in your Security Server database that do not have security rights granted or denied, you can grant access to those actions to users by default by checking the **Add implicitly grant access** box. If you do not check this box, those actions will be denied to users by default.
  8. If you want to display a log file of what happens during the import, check the **Display log on completion** box.
  9. Click **OK**.
  10. The import utility warns that you should back up your FactoryTalk Directory. If you have not done so, do so now (see step 1). If you have backed up your FactoryTalk Directory, click **Yes**.

11. Log onto the FactoryTalk Directory where you will be using FactoryTalk Security.
12. The import process runs. Depending on the contents of the file you are importing and of your FactoryTalk Directory, you may receive a warning message during the import. If this happens, review the information and click **OK** to continue the import process.
13. When the process is complete, the import utility displays a window saying whether it was successful or unsuccessful. Click **OK**.
14. If you chose to display a log file at the end of the import, the log file opens.

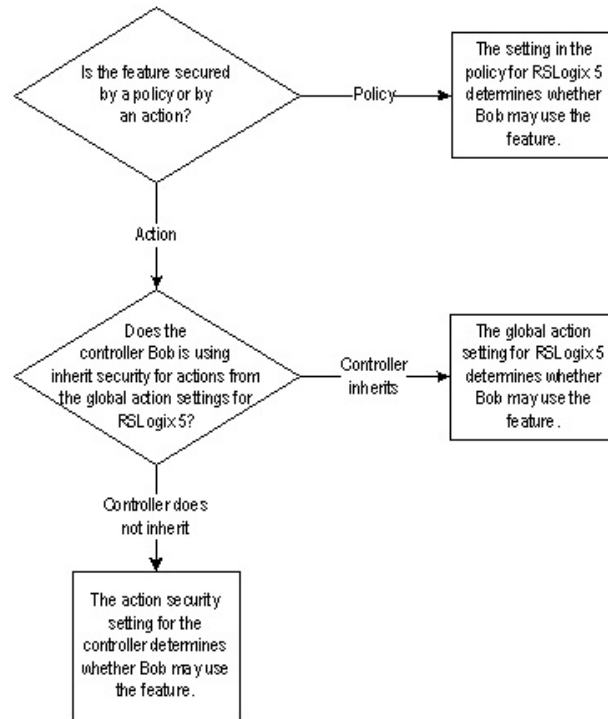
## Configuring FactoryTalk Security for RSLogix 5

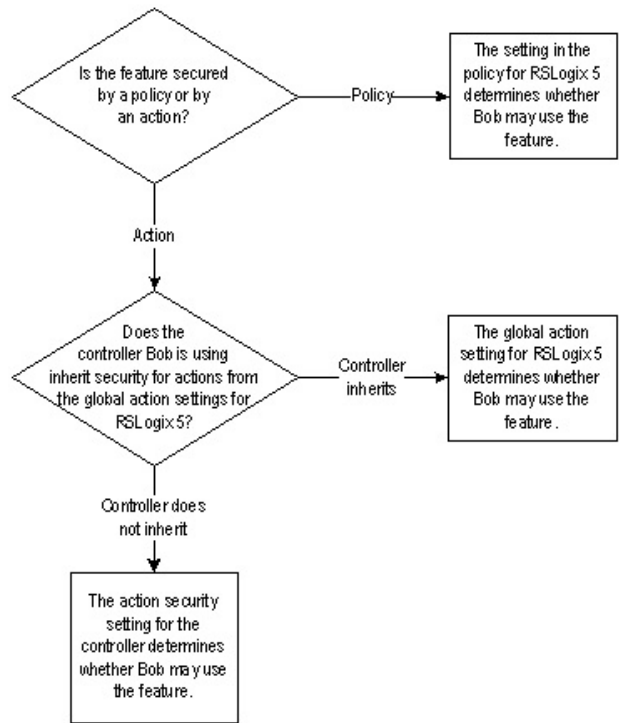
FactoryTalk Security allows you to control who can access features and functions of RSLogix 5.

There are two methods for controlling access to the features and functions of RSLogix 5:

- **Policies**, which are features and functions that are controlled globally. When you set access rights to an RSLogix 5 policy, those rights affect users without respect to the controllers they are using.
- **Actions**, which are features and functions that can be secured globally, but can also be set on a controller-by-controller basis.

For example, we want to determine whether a user named Bob may use a given function of RSLogix 5. To answer that question, we have to know whether the feature is secured through a policy or through an action. If it is secured through an action, we need to know whether the controller Bob is using inherits its security settings from the global settings for RSLogix 5.





## Setting Security Policies for RSLogix 5

Security policies control features globally. If a user is granted access to a feature of RSLogix 5 that is controlled by a policy, that user can use the feature regardless of the controller the user is using.

RSLogix 5 security policies control the following features:

This policy:	If granted to a user:	If denied to a user:
Allow the installation of RSLogix	Permits the user to install RSLogix 5.	Prevents the user from installing RSLogix 5.
Allow the un-installation of RSLogix	Permits the user to uninstall RSLogix 5.	Prevents the user from uninstalling RSLogix 5.
Change Report Settings	Permits the user to change reporting settings.	Prevents the user from changing reporting settings.
Change Software Properties	Permits the user to access and change the software configuration options (the <b>Tools &gt; Options</b> menu item). Also allows access to the properties for ladder files, data table files, force files, and database files.	Prevents the user from accessing or changing software configuration options.
Compare Utility	Permits the user to use the Compare utility.	Prevents the user from using the Compare utility.



<b>This policy:</b>	<b>If granted to a user:</b>	<b>If denied to a user:</b>
Enable VBA Editor (RSLogix 5 Professional only)	Permits the user to use the Visual Basic® for Applications (VBA) editor.	Prevents the user from using the VBA editor.
Enable/Disable VBA (RSLogix 5 Professional only)	Permits the user to run VBA scripts.	Prevents the user from running VBA scripts.
Generate Report	Permits the user to generate reports.	Prevents the user from generating reports.
Prompt for audit comment on File New	RSLogix 5 prompts the user for a comment when creating a new file (if RSLogix 5 is configured to audit user actions*).	The user is not prompted for a comment when creating a new file.
Prompt for audit comment on File Open	RSLogix 5 prompts the user for a comment when opening a file (if RSLogix 5 is configured to audit user actions*).	The user is not prompted for a comment when opening a file.
Prompt for audit comment on File Save	RSLogix 5 prompts the user for a comment when saving a file (if RSLogix 5 is configured to audit user actions*).	The user is not prompted for a comment when saving a file.

\*To enable auditing, you will need to install the optional source control software for RSLogix 5. This software is available from Rockwell Software Technical Support.

### To set security policies for RSLogix 5

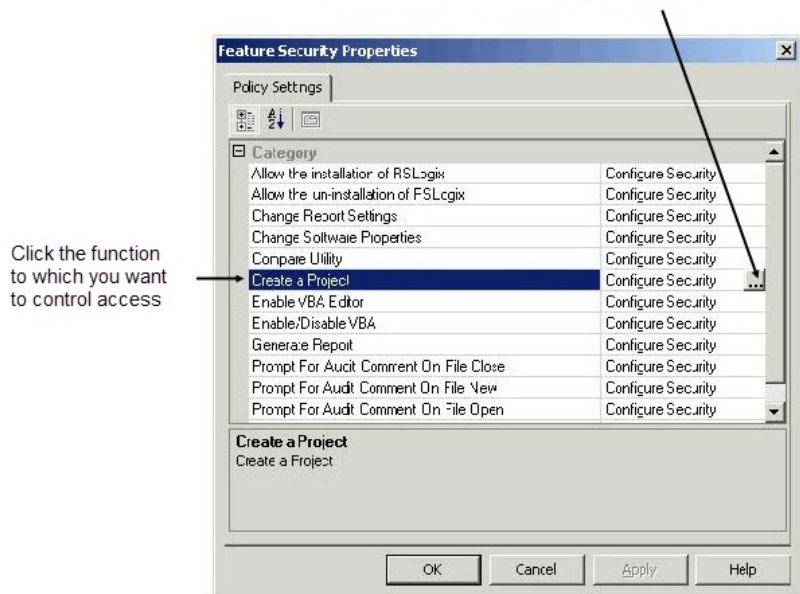
1. Start the FactoryTalk Administration Console by clicking **Start > Programs > Rockwell Software > FactoryTalk Administration Console**.
2. If you are not automatically logged onto the FactoryTalk Directory Server, log onto the server when prompted to do so. You must log onto the FactoryTalk Directory using an administrator account (or an account that has the rights to change security settings).
3. Once you are logged onto the server, click the **System > Policies > Product Policies > RSLogix 5** folder, and then open the Feature Security object.

**Tip:** To be able to use RSLogix 5, users (or user groups) must have the Read right to the Feature Security object for RSLogix 5. (To configure security for RSLogix 5, users must be FactoryTalk administrators.)

If users do not have the Read right to the Feature Security object, the FactoryTalk Directory will not allow them to read what rights they have in RSLogix 5, and secured features will not function for those users.

4. The **Feature Security Properties** window appears. In this window, click the function to which you want control access, and then click the small button (labeled ...) that appears on the right side of the window.

Click the small button (...) that appears on the right side



5. Configure the access for the function.

If you need more information about configuring FactoryTalk Security, click **Help** on the **Feature Security Properties** window.

## Securing Actions for RSLogix 5

Secured actions are functions that are secured either globally (affecting all controllers) or that are secured on a controller-by-controller basis. Whether the security settings apply globally or not depends on whether controllers inherit their security settings from the Networks and Devices object in the FactoryTalk Directory.

The following actions can be secured for RSLogix 5:

This action:	If granted to a user:
Change ControlNet XC File Association	The user may change the XC file association for a controller.
Change Password/Privilege Settings	The user may change a controller's password/privilege settings.

<b>This action:</b>	<b>If granted to a user:</b>
Change Privilege Class	The user may change privilege classes for a controller.
Change Processor Mode	The user may change controller modes.
Clear Fault	The user may clear processor faults.
Clear Memory	The user may clear controller memory.
Communications Configuration	The user may configure controller communications.
Configure Hot-Backup	The user may configure the hot backup feature for a controller.
Create/Delete Custom Data Monitor	The user may create or delete custom data monitors.
Create/Delete Data Files	The user may create or delete data table files.
Create/Delete Program Files	The user may create or delete program files.
Create/Delete Recipe Templates	The user may create or delete recipe templates.
Create/Delete Trend	The user may create or delete trends.
Create/Delete/Modify User Defined Structures	The user may create, delete, and modify user defined data structures.
Data File Properties	The user may set the properties of data table files.
Data Table Modification	The user may modify data table files.
Database Import/Export	The user may import and export description databases.
Description Editing	The user may edit the description database.
Download	The user may download to a controller.
Force Functions	The user may force I/O or modify forces.
Go Online	The user may go online with a controller.
Load/Delete Logic Extension Modules	The user may load or delete Logic Extension Modules (LEMs)
Monitor Custom Data Monitors	The user may monitor custom data monitors.
Monitor Recipe Templates	The user may monitor recipe templates.
Monitor Trend	The user may monitor trends.
Offline Data File Monitoring	The user may monitor data table files while offline.
Offline Program File Editing	The user may modify program files while offline.
Offline Program File Monitoring	The user may monitor program files while offline.
Online Data File Monitoring	The user may monitor data table files while online.
Online Program File Editing	The user may modify program files while online.
Online Program File Monitoring	The user may monitor program files while online.
Partial Download	The user may use the partial download feature.

<b>This action:</b>	<b>If granted to a user:</b>
Prevent Factory Password Override	The user may override a controller's password using the factory override password.
Program File Properties	The user may set the properties of program files.
Prompt for audit comment on applying port configuration	If auditing is enabled*, the user will be prompted for a comment when applying changes to controller port configurations.
Prompt for audit comment on Assembling Pending Edits	If auditing is enabled*, the user will be prompted for a comment when assembling pending rung edits.
Prompt for audit comment on Changing Password	If auditing is enabled*, the user will be prompted for a comment when changing a controller password.
Prompt for audit comment on Changing Processor Mode	If auditing is enabled*, the user will be prompted for a comment when changing controller mode.
Prompt for audit comment on Channel Configuration Data	If auditing is enabled*, the user will be prompted for a comment when changing controller channel configuration data.
Prompt for audit comment on Clearing all forces	If auditing is enabled*, the user will be prompted for a comment when clearing all forces in a controller.
Prompt for audit comment on Clearing Faults	If auditing is enabled*, the user will be prompted for a comment when clearing controller faults.
Prompt for audit comment on Clearing Memory	If auditing is enabled*, the user will be prompted for a comment when clearing controller memory.
Prompt for audit comment on Deleting Data File	If auditing is enabled*, the user will be prompted for a comment when deleting a data file.
Prompt for audit comment on Deleting Program File	If auditing is enabled*, the user will be prompted for a comment when deleting a program file.
Prompt for audit comment on Disabling all forces	If auditing is enabled*, the user will be prompted for a comment when disabling all forces.
Prompt for audit comment on Disabling SFC forces	If auditing is enabled*, the user will be prompted for a comment when disabling SFC forces.
Prompt for audit comment on Downloading program from Processor	If auditing is enabled*, the user will be prompted for a comment when downloading a program from a controller.
Prompt for audit comment on Enabling all forces	If auditing is enabled*, the user will be prompted for a comment when enabling all forces.
Prompt for audit comment on Enabling SFC forces	If auditing is enabled*, the user will be prompted for a comment when enabling SFC forces.

<b>This action:</b>	<b>If granted to a user:</b>
Prompt for audit comment on extended force data clearing	If auditing is enabled*, the user will be prompted for a comment when clearing external force files.
Prompt for audit comment on extended force data configuration	If auditing is enabled*, the user will be prompted for a comment when configuring external forces.
Prompt for audit comment on Going Offline	If auditing is enabled*, the user will be prompted for a comment when going offline.
Prompt for audit comment on Going Online	If auditing is enabled*, the user will be prompted for a comment when going online with a controller.
Prompt for audit comment on I/O auto configuration	If auditing is enabled*, the user will be prompted for a comment when autoconfiguring I/O.
Prompt for audit comment on Inserting a Replacement Rung	If auditing is enabled*, the user will be prompted for a comment when inserting a replacement ladder logic rung.
Prompt for audit comment on Inserting a Rung	If auditing is enabled*, the user will be prompted for a comment when inserting a rung into a ladder logic program.
Prompt for audit comment on Inserting Data File	If auditing is enabled*, the user will be prompted for a comment when creating a data table file.
Prompt for audit comment on Inserting Program File	If auditing is enabled*, the user will be prompted for a comment when creating a program file.
Prompt for audit comment on Loading from EEPROM	If auditing is enabled*, the user will be prompted for a comment when loading a program from EEPROM.
Prompt for audit comment on Marking Rung for Deletion	If auditing is enabled*, the user will be prompted for a comment when marking a rung for deletion.
Prompt for audit comment on Online Ladder Edits	If auditing is enabled*, the user will be prompted for a comment when editing ladder logic while online.
Prompt for audit comment on Partial Downloading program from Processor	If auditing is enabled*, the user will be prompted for a comment when using the partial download feature.
Prompt for audit comment on Partial Uploading program from Processor	If auditing is enabled*, the user will be prompted for a comment when using the partial upload feature.
Prompt for audit comment on processor name change	If auditing is enabled*, the user will be prompted for a comment when changing the name of a controller.
Prompt for audit comment on program file name change	If auditing is enabled*, the user will be prompted for a comment when changing the name of a program file.
Prompt for audit comment on reset of diagnostic counters	If auditing is enabled*, the user will be prompted for a comment when resetting diagnostic counters.
Prompt for audit comment on Rung Deletion	If auditing is enabled*, the user will be prompted for a comment when deleting a ladder logic rung.
Prompt for audit comment on scanlist modified	If auditing is enabled*, the user will be prompted for a comment when modifying a scanlist.
Prompt for audit comment on Storing to EEPROM	If auditing is enabled*, the user will be prompted for a comment when burning the EEPROM for a controller.
Prompt for audit comment on Testing Pending Edits	If auditing is enabled*, the user will be prompted for a comment when testing pending program edits.
Prompt for audit comment on Uploading program from Processor	If auditing is enabled*, the user will be prompted for a comment when uploading from a controller.
Replace	The user may use the Replace function.
Save	The user may save a project.

<b>This action:</b>	<b>If granted to a user:</b>
Save/Delete User Workspace	The user may save or delete user workspaces.
Transfer To/From EEPROM	The user may burn or read from a controller's EEPROM.
Upload	The user may upload a project from a controller.
View Extended Forces	The user may view extended forces.
View User Defined Structures	The user may view user defined data structures.
Offline Channel Configuration Editing	The user may edit the channel configuration in offline mode.
Online Channel Configuration Editing	The user may edit the channel configuration in online mode.

\*To enable auditing, you will need to install the optional source control software for RSLogix 5. This software is available from Rockwell Software Technical Support.

### Setting security for actions globally

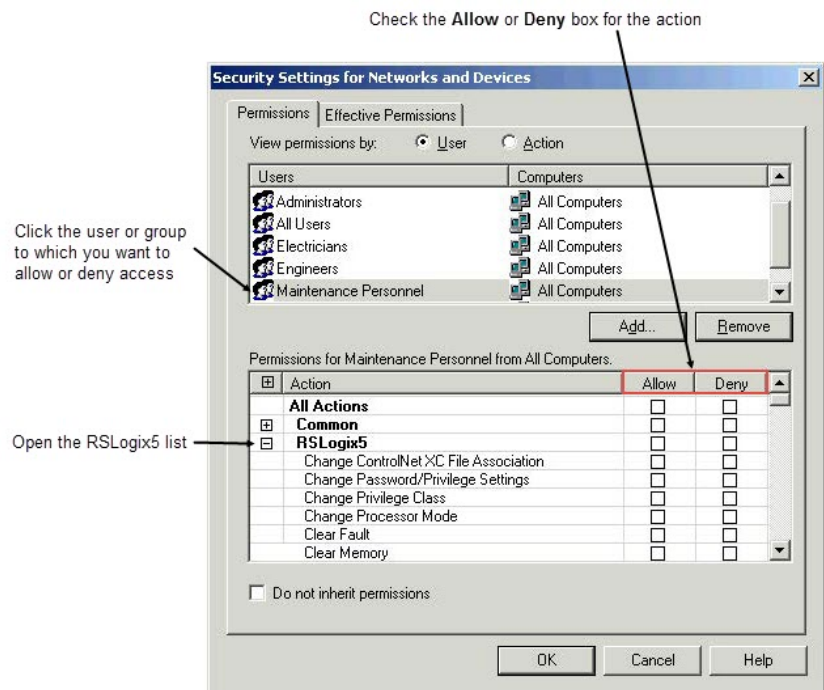
When you configure access rights to securable actions, you can set them for all controllers or for individual controllers. This section describes how to set security for actions globally.

1. Start the FactoryTalk Administration Console by clicking **Start > Programs > Rockwell Software > FactoryTalk Administration Console**.
2. If you are not automatically logged onto the FactoryTalk Directory Server, log onto the server when prompted to do so. You must log onto the FactoryTalk Directory using an administrator account (or an account that has the rights to change security settings).
3. Once you are logged onto the server, right-click **Networks and Devices**, and select **Security**.
4. The **Security Settings for Networks and Devices** window appears. In this window:

Select the user or user group for which you want to configure access to secured actions. (If you need to add a user or user group, click **Add**.)

- a. Open the **RSLogix 5** list by clicking the plus sign (+),

- b. Check the **Allow** or **Deny** boxes for the actions.



If you need more information about configuring FactoryTalk Security, click **Help** in the **Security Settings for Networks and Devices** dialog box.

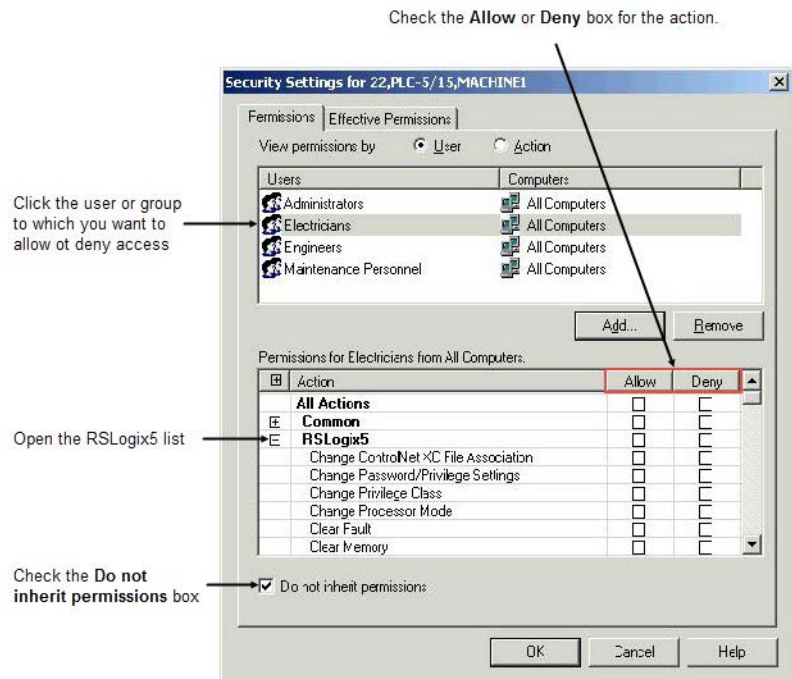
### Setting security for actions on a controller basis

Normally, controllers *inherit* their security settings from the settings for the Networks and Devices object. However, you can break the inheritance chain for a controller, configuring security for that controller separately. In that case, the controller no longer inherits its security settings from the Networks and Devices object.

#### To configure security for a controller so that it does not inherit its settings from the Network and Devices object

1. Start the FactoryTalk Administration Console by clicking **Start > Programs > Rockwell Software > FactoryTalk Administration Console**.
2. If you are not automatically logged onto the FactoryTalk Directory Server, log onto the server when prompted to do so. You must log onto the FactoryTalk Directory using an administrator account (or an account that has the rights to change security settings).
3. Once you are logged onto the server, browse to the controller for which you want to configure security for actions (under the Networks and Devices object in the Administration Console's Explorer tree). Right-click the controller, and then click **Security**.

4. The **Security Settings for Networks and Devices** window appears. In this window:
  - a. Check the **Do not inherit permissions** box. The software asks whether you want to copy the permissions from the parent object (the Networks and Devices object) or remove all inherited permissions from the object (the controller). If you have already configured security for the Networks and Devices object and want to use most of that configuration for the controller, copy the permissions. Otherwise, remove the inherited permissions.
  - b. Select the user or user group for which you want to configure access to secured actions. (If you need to add a user or user group, click **Add**.)
  - c. Open the **RSLogix 5** list by clicking the plus sign (+),
  - d. Check the **Allow** or **Deny** boxes for the actions.



## Starting RSLogix 5 software

To start RSLogix 5 software, click **Start > Programs > Rockwell Software > RSLogix 5 > RSLogix 5**.

## Troubleshooting installation

If RSLogix 5 does not start up or run properly:

- Do you have the correct version of RSLinx Classic installed? The software requires RSLinx Classic version 2.51.00 or later.



- Does your computer have enough memory? Check the hardware requirements on the first page of this chapter for memory requirements.
- Is the RSLogix 5 software activated? You will need to activate RSLogix 5 before you can use it.
- Do you have FactoryTalk Security or Security Server support enabled? If so:
  - If FactoryTalk Security support is enabled, are you disconnected from your network and unable to access your FactoryTalk Directory Server? Is FactoryTalk Security configured to allow you to have access to RSLogix 5 functions? Contact your FactoryTalk Security administrator for more information.
  - If Security Server support is enabled, are you disconnected from your network and unable to access your Security Server(s)? Is the Security Server configured to allow you to have access to RSLogix 5 functions? Contact your Security Server administrator for more information.



## Getting started with RSLogix 5

### Overview of RSLogix 5

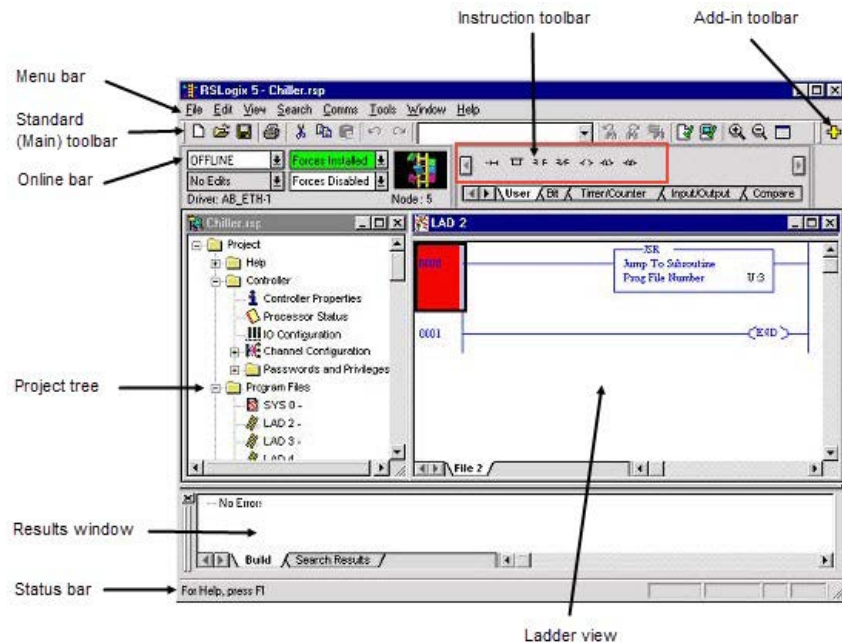
RSLogix 5 software is a 32-bit Windows ladder logic programming package for the Allen-Bradley PLC-5 family of programmable logic controllers. RSLogix 5 is compatible with programs created with any of Rockwell Software's PLC-5 programming packages.

RSLogix 5 software includes:

- A free-form ladder editor that lets you concentrate on the application logic instead of proper syntax as you write your program
- A powerful project verifier that you use to build a list of errors you can navigate to make corrections at your convenience
- Drag-and-drop editing to quickly move data table elements from one data file to another, rungs from one subroutine or project to another, or instructions from rung to rung within a project
- Search and replace to quickly change occurrences of a particular address or symbol
- A point-and-click interface (project tree) that lets you access all the folders and files contained in your project
- A custom data monitor to view separate data elements together and observe interactions
- A histogram function to monitor a data table bit or word as either text or a graphical timing chart
- SFC and Structured text editors, based on IEC 1131-3 standards, that share the same simple drag-and-drop editing found in the common ladder logic editor
- PC5 libraries for storing and retrieving portions of ladder logic for use across any of Rockwell Software's PLC-5 programming software products

### Navigating RSLogix 5

RSLogix 5 includes the screen elements described below.

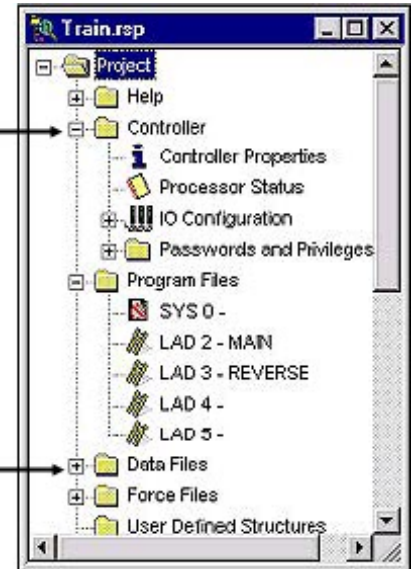


- **Ladder view.** In this part of the application window you can view several program files at the same time. This is where you edit your ladder logic.
- **Results window.** Displays the results of a Find All search or a verification procedure. You can hide this window view or drag it from the application window and place it anywhere on your screen.
- **Menu bar.** Select functionality from the menus that appear as you click each selection on this bar.
- **Standard toolbar.** The standard toolbar (also referred to as the main toolbar) contains many functions that you will use repeatedly as you develop and test your logic program. If you want to know what any of the icons represent, RSLogix 5 can tell you. Just move your cursor to the icon. A floating tooltip window will appear and tell you what the icon is used for.
- **Online bar.** Learn the operational mode and see whether you have online edits or forces installed at a glance. You can even view the driver and node number.
- **Instruction toolbar.** Displays instruction mnemonics in tabbed categories. When you click on a category tab the instruction toolbar just above it changes to show that category of instructions. Click an instruction to put it in your ladder program.
- **Add-in toolbar.** In RSLogix 5 Professional only. Use this toolbar to quickly access add-in software such as RSWire I/O Builder.
- **Status bar.** Look here for ongoing status information or prompts, as you use the software.

- **Project tree.** Displays all the folders and files contained in your project.

This symbol (-) means that the folder's contents are already visible. Click the symbol to collapse the folder and hide its contents.

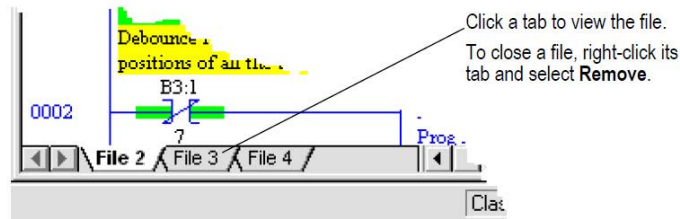
This symbol (+) means that the folder's contents are not visible. Click the symbol to expand the folder and reveal its contents.



If you right-click most items in the tree you will see a menu specific to the item selected. For example, if you right-click on a program file, you see options to rename, open, hide, or reveal properties of the program file, among other things.

### Opening multiple program files

To open a program file, simply double-click the file in the project tree. To open additional files, double-click each file that you want to open in the project tree. A tab for each open program file appears at the bottom of the ladder view.



### Splitting the viewing window

To open multiple files within the same project, you can split the viewing window

1. Position the cursor on the split bar in the ladder view window. The pointer turns into a double bar with two arrows.



2. Click and drag the split bar down to show two different viewing panes of the program file.


3. With focus in either pane, double-click the program file in the project tree that you want to view. The second file is opened on a tab in that pane.

Viewing two program files at once in this way makes drag and drop between them easier. You can also display different sections of the same file in each pane to facilitate moving or copying items within the same file.

### Opening multiple program windows

Another method of viewing multiple program files is to open a separate window for each.

1. In the project tree right-click on the program file you want to open.
2. Select **New Window**.
3. Repeat this process for any additional program files you wish to view simultaneously.

To close a program window, click its close button .

You cannot view program files from different projects with only a single instance of the RSLogix 5 application software running on your computer. You must open more than one instance of RSLogix 5 to work on multiple projects at the same time. Once you have the projects opened, however, you can drag and drop instructions and data between them.

## Quick Start steps for development

The following steps explain how to get up and programming quickly with RSLogix 5 as soon as you install it.

### Step 1 Configure a driver in RSLinx Classic

Of course, you will want your program to run in a controller. That means you will need some way to connect your computer to your controller - and you will have to tell the software how you are connected.

Communications from RSLogix 5 take place through another software package, called RSLinx Classic. RSLogix 5 talks to RSLinx Classic, which in turn talks to your communications devices.

A *driver* is a small piece of software that allows a computer to talk to other systems. In this case, RSLinx Classic uses drivers to connect your computer to your processor. You have to tell RSLinx Classic what driver you want to use to make that connection.

The driver you use depends on the way your processor is physically connected to your computer. There is a wide variety of possible physical connections; it's important you know which type of connection your system is using and how that physical connection is configured. For instance, if your processor is connected to your network through another computer running RSLinx Classic Gateway, you

need to use an RSLinx Classic Gateway driver. If you are directly connected to your processor through a 1784-KT card, you need to use the driver for that card.

You will also need to know the parameters of the physical connections - for instance, if you are connecting through a 1784-KT card, you will need to know how your KT card is configured and the station numbers of the processors on your DH+ network.

**Tip:** A "light" version of RSLinx Classic, called "RSLinx Classic Lite" comes with RSLogix 5. This version of RSLinx Classic provides the communication drivers necessary to use RSLogix 5. RSLinx Classic Lite will not, however, provide communications through DDE or OPC - those communication modes are used with other software packages, such as HMI or data acquisition packages. To use DDE or OPC communication, you will need to purchase RSLinx Classic.

### To configure a driver in RSLinx Classic

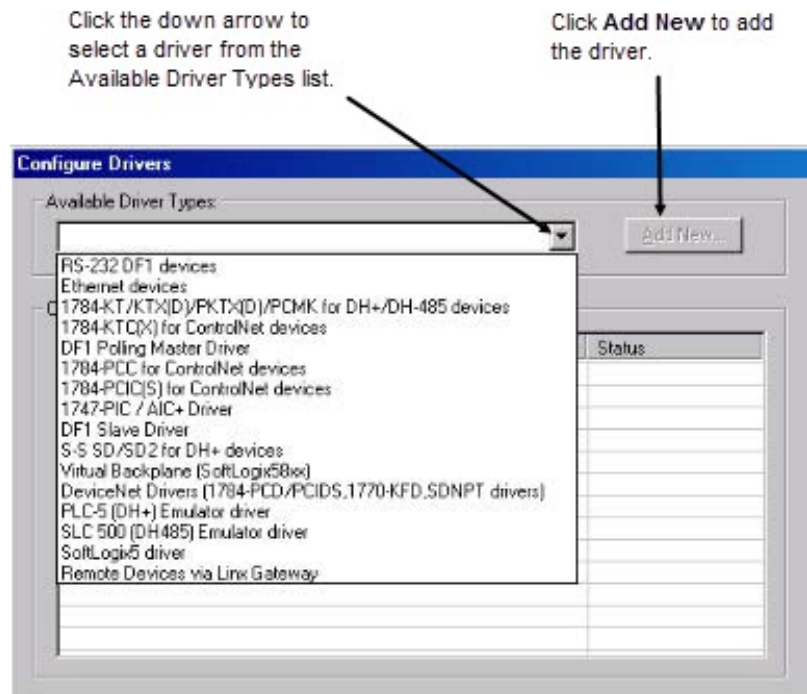
- a. Open RSLinx Classic by clicking **Start > Programs > Rockwell Software > RSLinx > RSLinx**. RSLinx Classic starts in a minimized mode - you will see an **RSLinx** icon in your **Windows System Tray**. (The System Tray is a part of the Windows Taskbar - by default, the System Tray is in the lower right-hand corner of your screen.) Click the **RSLinx** icon to open the **RSLinx** window.



This is the RSLinx icon that appears in the System Tray

- b. In RSLinx Classic, click **Communications > Configure Drivers**. This opens the **Configure Drivers** window.

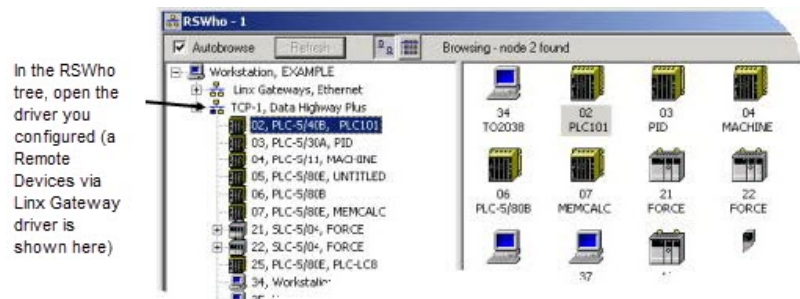
- c. In the **Configure Drivers** window, select the driver you need to use based on your physical connection to the processor. For example, if you are connecting with a 1784-KT card, select the **1784-KT/KTX(D)/PKTX(D)/PCMK for DH+/DH-485** devices driver.



- d. Click **Add New** to add the driver to the Configured Drivers list.
- e. RSLinx Classic asks you to name the driver. RSLinx Classic uses this name to refer to the driver. You can use the default name, or enter a name (names can be up to 15 characters long). Click **OK**.
- f. The window that appears next depends on the driver you selected. This window is where you configure the driver. Configure the driver to match your physical connection to the processor. If you need help with the parameters for the driver, click **Help** on the window.
- g. When you have finished configuring the driver, the driver appears in the Configured Drivers list of the **Configure Drivers** window. Click **Close**.



- h. You need to make sure the communications driver you configured is working properly. To do this, use the RSWWho function in RSLinx Classic. This function shows what processors and other communications devices are available through the driver. To display an **RSWho** window, click **Communications > RSWWho**.



- i. In the **RSWho** tree, open the driver you configured. You should see the processor to which you want to connect. If you can see the processor, the driver is configured correctly and you can proceed to the next step.

If you cannot see the processor, the driver is not configured correctly (or some other communication problem is preventing you from accessing the processor). Correct the problem before proceeding. See the online help in RSLinx Classic for information about the driver you are using.

## Step 2 Configure system communications

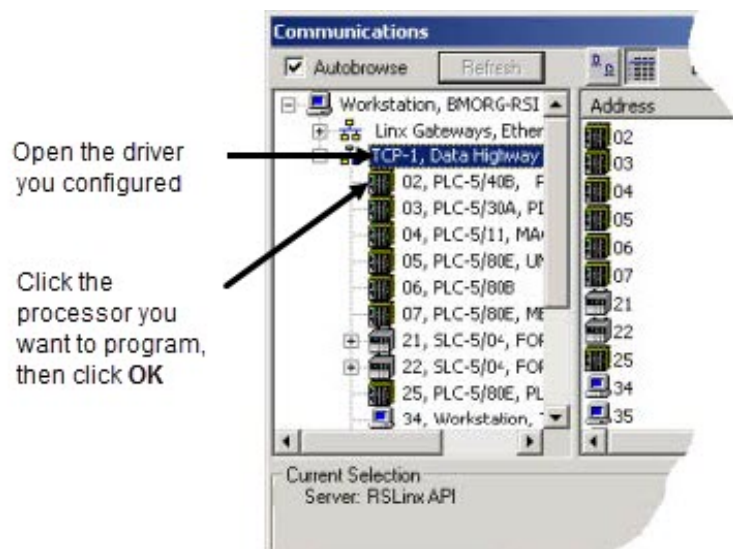
There are two kinds of communications configuration in RSLogix 5.

- **System communications**, which are set globally. When you set system communications parameters, those parameters are the default for all new projects in RSLogix 5.
- **Controller communications**, which are communications parameters specific to a given project. When you set controller communications for a project, those settings overwrite the system communications settings for that project. (Other new projects still use the system communications settings.)

Setting system communications parameters can save you time later. We suggest you set the system communications parameters before creating your first project in RSLogix 5.

### To set the system communications parameters

- a. From the **Comms** menu, click **System Comms**. This displays the **Communications** window. (If RSLogix Classic is not running, it will start.) The **Communications** window is very much like the **RSWho** window you encountered while configuring your communications driver.
- b. In the **Communications** window tree, open the driver you configured. The processor you want to program should be visible. Click the processor, then click **OK**.



There is a great deal more that you can do from the **Communications** window. For more information, see the online help.

**Tip:** If you want to change the system communications settings, click **Comms > System Comms**.

If you want to set different communications parameters for a given project but leave the system communications settings alone, open the properties for the project's controller. For more information, see the online help for RSLogix 5.

## Step 3 Create a new project or open an existing project

RSLogix 5 is based on projects. A project is the complete set of files associated with your program logic.

### New Project

#### To create a new project

1. Select **File > New**.

2. Provide information about your processor on the **Select Processor Type** dialog box. If you already set up communications as in Quick Start Step 1, this information appears on the dialog box. If not, specify the communications settings here. Click **OK**.

RSLogix 5 creates and displays the project tree control for your new project. This project tree is your access point to program, data table, and database files. For more information about the project tree, see [Navigating RSLogix 5](#) on [page 43](#).

## Existing Project

### To open an existing project

1. Select **File > Open**.
2. Click the file you want to open and click **Open**. If the file you want to open does not appear on the list:
  - Use the **Look in** list to navigate to a different folder.
  - Use the **Files of type** list to display files with an extension other than .RSP, .X5, .PC5, or .AF5.

RSLogix 5 can open projects and documentation files that were developed using any Rockwell Software DOS-based (PLC-5 A.I. Series or 6200 Series PLC-5) or Windows-based (RSLogix 5 or WINtelligent™ Logic 5) programming software. If you experience a problem however, there are special considerations that may affect retrieval of your database files. For more information about opening projects created using other Rockwell Software PLC-5 programming software products, see Chapter 3, [Opening A.I. and 6200 project files in RSLogix 5](#) on [page 61](#).

**Tip:** For clarification of the different file types and their extensions, click **Help** on the **Open/Import PLC-5 Program** dialog box.

## Step 4 Add the chassis and I/O

### To add a chassis

1. From the **Controller** folder in the project tree, double-click the **IO Configuration** icon. The **I/O Configuration - Chassis Table** dialog box appears.
2. Right-click inside the **I/O Configuration** dialog box and select **Add Chassis**. The **Edit Chassis Properties** dialog box appears, with the **Chassis** tab selected.
3. Select the chassis type by clicking one of the option buttons. A list is displayed showing the available chassis.
4. Select the desired chassis from the list.

5. If you've selected a Flex I/O chassis, enter the number of slots in the **Number of slots** field. Enter a value from 1 to 8.
6. Document the DIP switch settings by selecting the configuration settings in the pull-down list boxes in the **DIP Switches** section of the dialog box.
7. Click **OK** to accept your choices and close the dialog box.

Some modules may require configuration after they have been added. For more information about hardware configuration, see Chapter 4, [Hardware configuration](#) on page 63.

**I/O Configuration - Chassis Table**

Show Non-I/O Rows

NAME	I/O Channel	Chassis Type	Adapter	Inh	Res	Rack Address
Chassis_1	Local	1771-A1B (4 slots)	PLC-5/40	<input type="checkbox"/>	<input type="checkbox"/>	15

**Chassis Chassis\_1, Rack 0, Group 0**

Attached to PLC Untitled

Slot	R/G/S/C	Module Type	I/O Points	Description
0	0/0/0/0	1771-0FE	0	12 Bit Analog
1	0/1/0/0			
2	0/2/0/0			
3	0/3/0/0			

By default the first chassis listed in a new project is the 1771-A1B four slot. You can change this by right-clicking on the chassis and selecting Properties.

To add modules to the chassis, right-click the chassis and select **Display Chassis**. The smaller dialog box shown here appears.

In the **Chassis** dialog box, right-click in the cell for the slot to which you wish to add a module and select **Insert Module**.

**ControlNet™ users:** For ControlNet processors controlling I/O via ControlNet, the chassis and modules must first be mapped in RSNetWorx before they will appear in the chassis table to be configured. Also, the associated .XC file (created by RSNetWorx™) and the ControlNet node number of the processor must be entered in **Controller Properties** in the Project Tree.

## Step 5 Create program and data table files

The project tree is your point-of-entry for creating new files or accessing existing files. To create a new file, right-click the program or data file icon and then select **New**. A dialog box appears for you to provide information about the file. For more information, refer to the online help.

Right-click and select **New** to create a new program or data file.

**Program Files** Data files are also created automatically as you assign new addresses in your ladder program.

**Data Files**


A program file may contain controller information (SYS 0), the main ladder program (LAD 2), or a subroutine program.

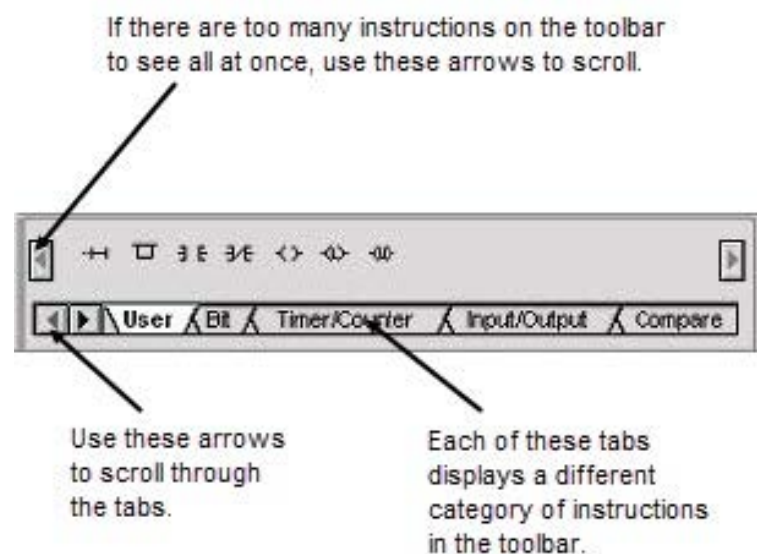
Data table files contain the status information associated with external I/O and all other instructions you use in your main and subroutine ladder program files. In addition, these files store information concerning controller operation. You can also use data table files to store look-up tables if needed.

## Step 6 Enter a logic program

When you open a program file by double-clicking its icon in the project tree, the ladder file opens in the right half of the **RSLogix 5** window. Usually program file #2, the main program file, is opened when you open a project. If you have not begun to enter any ladder logic, only the end rung will show.

### To enter ladder logic to a new program

1. Click the end rung icon  and then select the new rung icon on the **User** tab of the instruction toolbar.
2. To place an instruction on a rung, click its icon on the instruction toolbar.



You can place several instructions on a rung in sequence by clicking the icons one after another. RSLogix 5 places instructions from left to right.

3. Assign an address to each instruction. Double-click an instruction, type the address in the empty field that appears above the instruction, then press **Enter**. With RSLogix 5 you can also drag and drop addresses from a data table file onto instructions in your ladder logic.
4. Continue adding rungs, remembering to save your file periodically with **File > Save**.

RSLogix 5 supports a file-based editor. This means that you can:

- Create and/or edit multiple rungs at a time

- Enter addresses before you actually create data table files for your I/O
- Enter symbols before you have assigned addresses for them in the database
- Enter instructions without having to provide addresses until just before file validation occurs

For more detailed information about entering ladder logic including information about shortcuts, branching, addressing, and performing program edits online, refer to Chapter 6, [More about entering ladder logic](#) on [page 77](#).

## Step 7 Add documentation to your logic instructions

You can use several methods to add symbols and descriptions to addresses in the database.

- Add a symbol directly to an addressed instruction in the ladder logic. Double-click the address, type the symbol in the address edit field, and press **Enter**.  
  
You can enter a symbol in this manner before an address has been assigned, then later use the database editor to assign an address. (Database editor is an encompassing term for the various database editing dialog boxes that appear when you click one of the icons under **Database** in the project tree.)
- Right-click an instruction address or rung number in the ladder logic and select **Edit Symbol** or **Edit Description** for an address or **Edit Comment** or **Edit Title** for a rung.
- Modify an address's symbol and description in the data file. Double-click the data file in the project tree, click on an address in the table. The bottom of the dialog box contains fields where you can enter the documentation for the address.
- Modify (add, delete, change) the database using the database editor. This is the preferred method for deleting project documentation. All documentation (including instruction comments and group names and descriptions) can be edited with this method. Double-click an icon in the database folder located in the project tree. Another method of accessing the database editor is to right-click an address in the ladder logic and select **Goto DataBase**.
- Copy symbols and descriptions from the ladder display between RSLogix 5 and RSLogix 500 or between instances of RSLogix 5 by using cut, copy, and paste options or by dragging and dropping the symbol or description from one application to another. (A dialog box will appear if there is a database collision.) Any errors or inconsistencies between data types will be flagged when the program is verified. You cannot copy and paste to other applications within the database editor, only from within the ladder view.
- Use Microsoft Excel® to edit the database. Select **Tools > Database > Edit Using Excel**. (This feature is available only in RSLogix 5 Professional.)

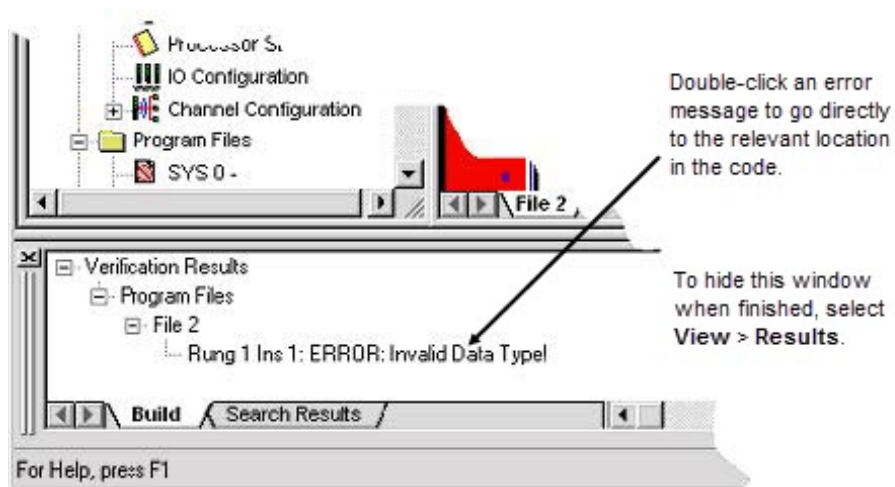


For information about database import and export options, see Chapter 5, [Importing or exporting the documentation database](#) on [page 69](#).

### Step 8 Verify the program logic

When you are ready to build your project, you can validate a single program file or you can validate your entire project. Select **Edit > Verify File** or **Verify Project**.

After you initiate a verification, the **Verify Results** output window displays and gives you information about mistakes or omissions that may have occurred as you wrote your program logic.

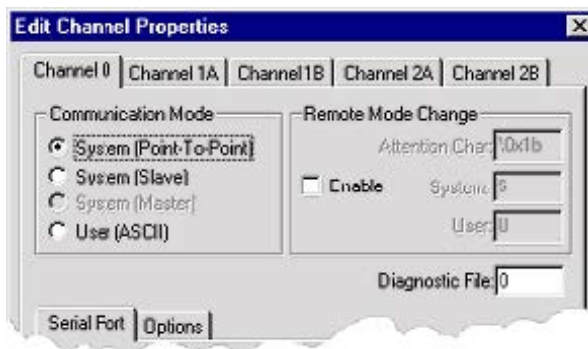


### Step 9 Configure the communication channels

Enhanced (New Platform), Protected (Secure), Ethernet, and ControlNet PLC-5 processors have communication channels that must be configured. (For Soft Controllers, configure the PLC-5 I/O, Remote I/O scan list, and SLC™ 500 I/O. Double-click the appropriate icons under **IO Configuration** in the project tree.)

#### To configure communication channels

1. Double-click the **Channel Configuration** icon in the **Controller** folder in the Project tree.
2. Edit the properties in the dialog box and click **OK**.



- Use the Channel 0 tab to configure settings for RS232/422/423.

- Use the Channel 1A - 2B tabs for DH+, Scanner, Adapter, or Inactive I/O channel mode.
- Use the Channel 2 tab (not shown) for Ethernet or Local I/O Extension channels.
- Use the Channel 3A tab (not shown) when using a VME or Ethernet sidecar coprocessor.
- For more information about the parameters in the dialog box, click **Help** or press **F1**.

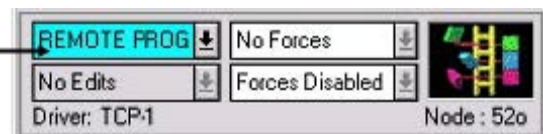
## Step 10 Download and go online

**Tip:** If you are developing the program offline, for example on a laptop remote from the site, and later plan to download and run the program on a specific processor (node) via a determined protocol, you may want to override system communication settings made in [Step 2 Configure system communications on page 49](#). Double-click **Controller Properties** in the project tree, click the **Controller Communications** tab, and set the communication settings. Settings made on this dialog box will override any driver and node settings established in Step 2, and should be completed before performing this step.

### To download and go online

1. Select **Comms > Download** to download the current offline program into the controller.
2. RSLogix 5 automatically verifies the project. If no errors are found, the download continues. If errors are found, you must correct them and initiate the download again (with **Comms > Download**).
3. After downloading, RSLogix 5 will ask if you want to go online. Click **Yes** to go online.

Click here to change the processor mode or go offline.



If you want to download only specific program and data files, force data, or channel configuration data, select **Comms > Partial Download**. This allows you to maintain certain parts of your PLC-5 program, while overwriting other parts.

## Step 11 Monitor data files

You can use RSLogix 5 to watch what is happening in your data table files. This procedure is called monitoring data table files.

When you are monitoring data table files, you can:

- Define how your data file selection grid will display
- Change values in the data table
- Change the display radix



- Show which addresses are used in your ladder logic
- Switch between files
- Quickly jump to another address in another data table file
- Cross reference data

To monitor data, simply open a data file (double-click it) in the project tree. You can have multiple data table files opened for monitoring at the same time. To cascade or tile all the windows opened in your RSLogix project, select an option from **Window > Arrange**.

Data changes made offline only affect the disk file unless the program is restored to the processor.

Data changes made online only affect the processor file unless the program is saved or uploaded while online to update the disk file.

For information about how you can perform a cross reference, force I/O, or create and monitor lists of related addresses instead of accessing the data table files, see Chapter 7, [More about monitoring data](#) on [page 89](#). Also, you can use histograms to monitor a data table bit or word as either text or a graphical timing chart. More information about histograms can be also be found in Chapter 7.

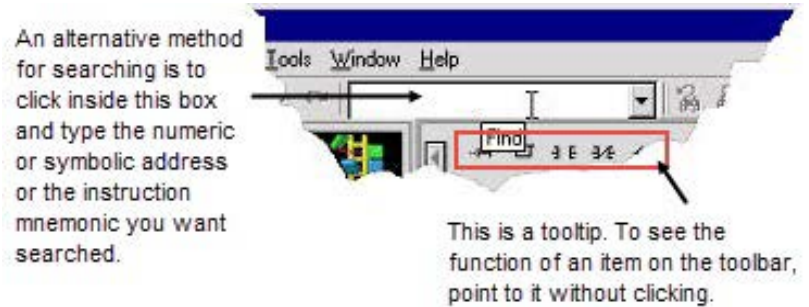
## Step 12 Search and replace instructions

The **Find** option allows you to quickly locate instructions, addresses, and symbols in ladder program files. You can even search for edit zones within your logic program. If you want to automatically replace instructions and addresses with different ones, you can use the **Replace** option. You can use wildcards in your find and replace operations.

### To search (and replace)

1. Select **Search > Find** or **Search > Replace**.
2. Specify the instruction you want to locate in the **Find What** field. You can type any of the following:
  - The mnemonic (such as XIC or TON)
  - The address (such as B3/4)
  - A combination of both mnemonic and address (XIC B3/4)
  - A combination of mnemonic and symbol (XIC REPEAT)
3. If replacing, type what you want the instruction replaced with in the **Replace With** field.

4. Set remaining parameters in the dialog box if desired (such as the search direction) and click **Find Next** or **Replace**. For more information about the options and buttons in the dialog box, click **Help**.



## Step 13 Print a report

You can obtain a printout of various elements of your project, such as program files, data table files, and processor information.

### To print a report

1. Select **File > Report Options**. The **Report Options** dialog box displays a tree on the left with the elements of a report that you can configure (such as, which program files to print, title, header, fonts, colors, etc.). The right side of dialog box displays the controls for you to set.
2. Use the check boxes to mark everything you want included in the report.
3. Click **Page Setup** to set the paper size, margins, and orientation.
4. In the tree, click an element to configure that element's settings. For example, when you click **Program Files** in the tree, the options on the dialog box allow you to select which program files you would like to print and even ranges of rungs.

If you are including a title page, header, and footer, be sure to click each of these elements in the tree to set them up.

5. Click **Print Preview** to see how the report will appear. You can scale up the image to make the information appear larger on the printed page or scale down the image so that, in cases where many instructions are on a rung of logic, all the instructions can fit on the printed page.
6. If the report appears as you expected, click **Print** to print the report. Otherwise, click **Options** to return to the **Report Options** dialog box and make changes.

If you wish to save report settings for future use, click **Save/Load** at the bottom of the **Report Options** dialog box. Notice that the **Report Options Setup Load/Save** dialog box that appears has an **Import** and an **Export**

button allowing you to import and export report formats for use with other projects.

## Quick Start steps for maintenance

The steps below will help you get online quickly for maintenance tasks, like, for example, changing some contacts.

**Tip:** RSLogix 5 now provides a feature for going online more quickly called **Online Now**. System communications must be configured. Select **Comms > Online Now**. If the offline program file is different from that in the processor, the processor file is uploaded automatically. The database is not loaded and x-ref is disabled. More information is available in the online help.

### Step 1 Establish communications with the processor

This step assumes that a driver has been configured in RSLinx Classic or RSLinx Classic Lite. If not, do so before performing this step. For more information on configuring drivers, see the online help in RSLinx Classic. (Select **driver configuration** in the RSLinx Classic help index).

1. Select **Comms > Who Active Go Online**.
2. Use the tree structure in the left pane to navigate to the network on which the processor resides.
3. Click the processor in the right pane to select it.

### Step 2 Go online

1. Click **Online**.
2. The system checks for a project on your computer that matches the processor program. One of three things will happen:
  - A perfect match is found. In this case, RSLogix 5 goes online with no further action required on your part.
  - An imperfect match is found for one or more projects with the target processor name. In this case, select the desired project file from the list and click **Upload Logic, Merge with Existing File's Comment / Symbol DB**.
  - No match is found. In this case, click **Create New File**.



## Opening A.I. and 6200 project files in RSLogix 5

RSLogix 5 can open projects and documentation files that were developed using any RSI DOS-based (PLC-5 A.I. Series or 6200 Series PLC-5 or Windows-based (RSLogix 5 or WINtelligent Logic 5) programming software. If you experience a problem however, there are special considerations that may affect retrieval of your database files.

### Opening a Project File

If the procedure below does not satisfactorily open the ladder logic file and its accompanying database files, read and follow the special considerations for PLC-5 A.I. Series software and 6200 Series PLC-5 programming software discussed in this chapter.

1. Select **File > Open**.
2. Use the **Look In** box to navigate to the location of the project file.
3. In the **Files of Type** field, select the type of project. RSLogix 5 supports .RSP, .X5, .AF5 and .PC5 library files, as well as backup files.
4. Click the project file you want to open, and click **Open**.

### Special Considerations

#### Retrieve the PLC-5 A.I. Series documentation database

When you open an X5 project created using PLC-5 A.I. Series programming software, RSLogix 5 automatically imports the documentation database making it available to the X5 file. If however, for some reason, the documentation database cannot be accessed or fails to accompany the project, you can attach the documentation using the method below.

Make sure you have followed the procedure above for opening a project before proceeding with the following steps.

1. With the project opened, select **Tools > Database > Native Import**.
2. Select **AI** for the **Import** input format.
3. Select which types of data to import and specify what to do in case of collisions with existing data records. Press **F1** if you need help on the dialog box.
4. Click **OK**.
5. Find the .DSC file for your project; click it to select it.

6. Click **Open**. The data you specified will be imported into the current project.

## Open a 6200 Series PLC-5 Project

When you attempt to open an AF5 project created using DOS-based 6200 Series PLC-5 programming software, RSLogix 5 does two things. It automatically launches an internal conversion utility that converts the AF5 file into an X5-format file. Then it imports the documentation database making it available to the X5 file.

Sometimes, due to the complexity of your project or the software version used to create it, you may experience a problem with this process. You may find that RSLogix 5:

- Cannot retrieve the database documentation associated with the file (corrupt database message)
- Has problems opening the AF5 project file

If this happens, follow the procedure below to open the 6200 Series PLC-5 project file including the documentation database.

1. Using the 6200 Series DOS programming software, save the 6200 Series PLC-5 project file as an X5 file.
2. In RSLogix 5, select **File > Open**.
3. Use the **Look In** box to navigate to the location of the project file.
4. In the **Files of Type** field, select **PLC5 Programs (\*.X5)**.
5. Click the project file you want to open, and click **Open**. (The documentation will not follow. It must be imported as described next.)
6. Select **Tools > Database > Native Import**.
7. Select **AB 6200** for the **Import** input format.
8. Make sure **Import ALL** is selected.
9. Click **OK**.
10. Use the **Look in** box to navigate to the location of the 6200 Series PLC-5 database files (OP\$ extension). Click the database file, and then click **Open**.

## Hardware configuration

This chapter provides information on configuring your chassis and I/O modules in RSLogix 5.

### The chassis table

The chassis table is the starting point for adding, deleting, or configuring chassis, processors, adapters and I/O modules. To display this window double-click the **I/O Configuration** icon in the project tree.



Use the right mouse button menus to perform tasks in the **Chassis** Table.

The chassis table contains information about the current configuration of your I/O chassis, including:

- The chassis type
- The processor (or adapter) for the chassis
- Whether the chassis is inhibited or reset
- The rack addressing mode for the chassis
- The rack, group, and slots encompassed by the chassis
- Whether the chassis is set to use complementary I/O

For clarity, you can limit your view of the chassis table to only show rows having directly to do with I/O - that is, the chassis and I/O scanner rows. To do this, clear the **Show Non-I/O Rows** check box at the top of the chassis table.

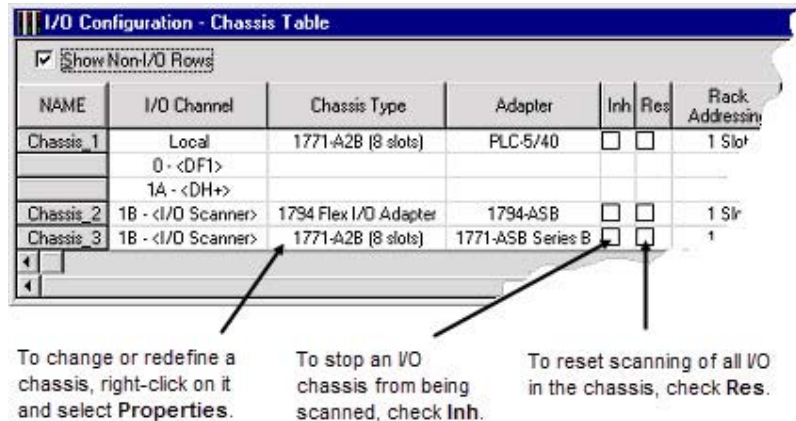
### Adding and configuring a chassis

By default each processor in your project is associated with one I/O chassis. You can add additional chassis to a processor to expand the number of I/O modules that processor can address. Adding a chassis consists of selecting the type of chassis you are using for your project and documenting the chassis DIP switch settings.

**ControlNet users:** For ControlNet channels, first use RSNetWorx to insert, delete and modify chassis and modules. Then use RSLogix 5 to configure the modules.

### To add and configure a chassis

1. From the **Controller** folder in the Project tree, double-click the **I/O Configuration** icon. The **I/O Configuration - Chassis Table** dialog box appears.



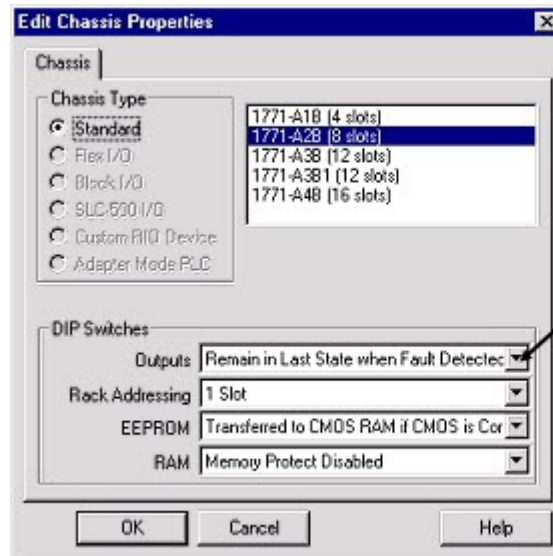
2. Right-click in the **Chassis Table** and select **Add Chassis**. The **Edit Chassis Properties** dialog box appears, with the **Chassis** tab selected.
3. Select the chassis type by clicking one of the option buttons. A list is displayed showing the available chassis.
4. Select the desired chassis from the list.
5. If you've selected a Flex I/O chassis, enter the number of slots in the **Number of slots** field. Enter a value from 1 to 8.
6. Document the DIP switch settings by selecting the configuration settings in the pull-down list boxes in the **DIP Switches** section of the dialog box.
7. Click **Apply** to accept your choices and leave the dialog box open or click **OK** to accept your choices and close the dialog box.

## Configuring a PLC or I/O adapter

Each I/O chassis has an I/O adapter. The adapter is either a PLC-5 processor, configured when you begin a project, or an I/O adapter. Select chassis DIP switch settings, add or change the type of adapter, or establish configuration settings for the adapter in any chassis by double-clicking on the processor or adapter in the **Chassis Table** (or right-clicking and selecting **Properties**).

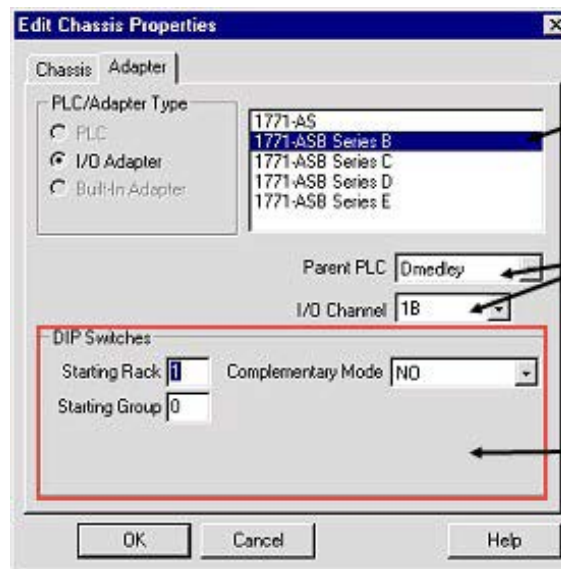


**For a PLC-5**



Indicate the dip switch settings of the chassis.

**For an I/O adapter**



Select the I/O adapter type from this list.

Make your selections for the scanner PLC and scanner channel here.

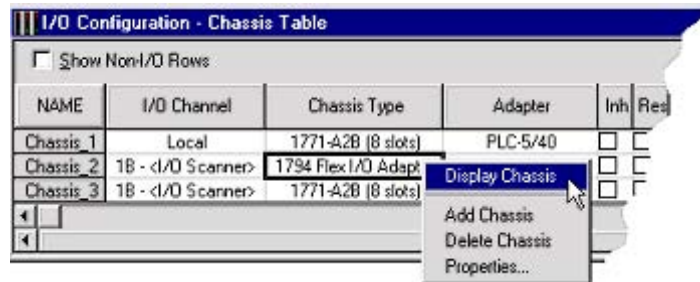
Indicate the dip switch settings of the chassis.

**Adding I/O modules**

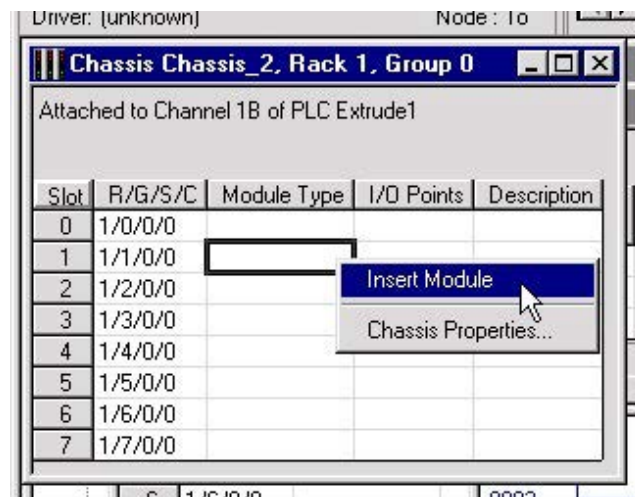
**To add a module to a chassis**

1. Double-click the **I/O Configuration** icon in the project tree to open the **Chassis** table.

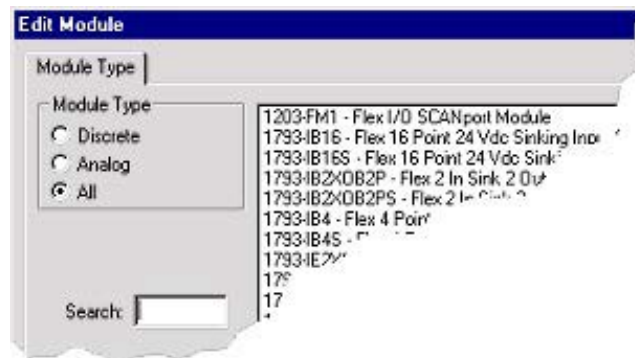
- Right-click the chassis and select **Display Chassis**.



- Right-click the cell for the slot you wish to add a module to and select **Insert Module**.



- Select the module type and the specific module. Click **OK**.



Using the method above, you can add, delete, or edit modules as well as create descriptions for each one. Some modules require configuration after they are added.

Remember that you can always press **[F1]** for help about any task you are attempting as you progress through the dialog boxes while you use RSLogix 5.

## Configuring I/O

### To configure an I/O module

1. Double-click the **IO Configuration** icon in the project tree.
2. Right-click the chassis containing the module you want to configure and select **Display Chassis**.
3. Right-click the module that you want to configure and select **Display Module**. The module configuration window varies from module to module and configuration is different for discrete and analog modules. Press **[F1]** to display help on that particular module.
  - **Discrete.** These modules require no configuration, but symbols, descriptions, values, and forcing can be assigned to individual I/O points. Click **Close** when finished editing.
  - **Analog.** Most analog modules require configuration. These configurable analog I/O modules are known as "intelligent block-transfer" modules. In addition to defining block transfer read/write pairs, configuration parameters must be defined, such as scaling, alarm limits, or other types of items particular to the specific type of module.

The first time you edit a particular analog I/O module, the **Enter Module Addresses** dialog box appears. Enter addresses or click **Auto-Pick** to have RSLogix 5 automatically select the addresses required for the module, and then click **Done**. (Auto-Pick is not available for ControlNet modules.) That module's configuration window appears. Make your changes, click **Accept Edits**, then click **Close**.

If you want to edit addresses in the future, right-click in the spreadsheet portion of the module's configuration dialog box and select **Edit Variable Addresses**.

**Tip:** Most analog modules require block transfer rungs. RSLogix 5 can automatically generate these rungs for you. On that module's configuration dialog box, click the **Insert Ladder Rungs** button.



## Importing or exporting the documentation database

The import and export utilities are available from the **Tools** menu by clicking **Database**. Use the import functionality in RSLogix 5 when you want to apply documentation that already exists to a project you are currently developing in RSLogix 5. Use the export functionality in RSLogix 5 to make the database documentation that is part of your current RSLogix 5 project available to other projects.

### Import database

You can apply documentation to newly created logic files by importing existing database documentation. The existing documentation might come from:

- Projects developed using Rockwell Software's DOS-based PLC-5 A.I. Series or 6200 Series programming software
- Another project developed using RSLogix 5
- A spreadsheet application, like Microsoft Excel (saved as a .CSV file)
- An ASCII text file

Sometimes when you import a documentation database, there may be conflicting entries in the import file and the database. This is called a collision. Before you begin any import, you can select if you want the imported database instance or the current database instance discarded if collisions occur.

### PLC-5 A.I. Series project documentation database

#### To import a PLC-5 A.I. Series database

1. Select **Tools > Database > Native Import**.
2. Click **AI**.
3. Select which database components to import.
  - Address symbols and descriptions (.DSC files)
  - Page titles and rung descriptions (.RPD files)
4. Select an option for handling collisions and click **OK**.
5. Locate and select the database file you want to import and click **Open**.

If you have a database that was exported from PLC-5 A.I. Series software, you may need to follow the instructions for importing a CSV or ASCII file, depending on what selections were made when exporting from A.I. If exported in .CSV, then follow the instructions for [importing a .CSV file](#) on [page 71](#). If exported in .EAS format, follow the instructions for [importing an ASCII file](#) on [page 71](#).

## 6200 Series PLC-5 project documentation database

### To import a 6200 Series database

1. Select **Tools > Database > Native Import**.
2. Click **AB 6200**.
3. Select which database components to import.
  - Address symbols and descriptions
  - Instruction comments
  - Page titles and rung descriptions
4. Select an option for handling collisions and click **OK**.
5. Locate and select the database file you want to import and click **Open**.

By default the file type selected for import is .OP\$. The .OP\$ file is the database control file. It references individual database files (for example the symbol / description file or the page title / rung description file) that reside in the same folder as the .OP\$ file. After an import completes, RSLogix 5 creates a log file that informs you which database files successfully imported and which database files contained errors and could not successfully be imported.

## RSLogix 5 documentation database

### To import an RSLogix 5 database

1. Select **Tools > Database > Native Import**.
2. Click **RSLogix 5**.
3. Select which database components to import.

- Address symbols and descriptions
  - Instruction comments
  - Page titles and rung descriptions
  - Symbol groups
4. Select an option for handling collisions and click **OK**.
  5. Locate and select the database file you want to import and click **Open**.

By default the file type selected for import is .CTD. The .CTD file is the database control file. It references individual database files (for example the symbol / description file or the page title / rung description file) that reside in the same folder as the .CTD file. After an import completes, RSLogix 5 creates a log file that informs you which database files successfully imported and which database files contained errors and could not successfully be imported. For a complete list of RSLogix 5 file extensions for individual database documentation refer to the online help and search "file extensions."

### **CSV (Comma Separated Values) file**

You may wish to import files created with a spreadsheet application such as Microsoft Excel or files exported from PLC-5 A.I. Series software in .CSV format.

#### **To import a CSV file**

1. Select **Tools > Database > ASCII Import**.
2. Click **CSV**.
3. Select which database components to import.
  - Address symbols and descriptions
  - Instruction comments
  - Symbol groups
4. Select an option for handling collisions and click **OK**.
5. Locate and select the database file you want to import and click **Open**.

For an example of a .CSV file, refer to the online help and search the index for "CSV format for database import / export."

### **ASCII delimited text file**

You can import documentation files that were created using RSLogix 5 software or PLC-5 A.I. Series software and exported and saved as ASCII delimited files (.EAS in A.I.). ASCII delimited means that the fields for each RSLogix 5 database record are enclosed in quote marks and separated by commas.

### To import an ASCII database file

1. Select **Tools > Database > ASCII Import**.
2. Click **RSLogix 5**.
3. Select which database components to import.
  - Address symbols and descriptions (.EAS files)
  - Instruction comments (.EIC files)
  - Page titles and rung descriptions (.ERP files)
  - Symbol groups (.ESG files)
4. Select an option for handling collisions and click **OK**.
5. Locate and select the database file you want to import and click **Open**.

Any file extension may be used for an ASCII delimited text file. You can look for and select any file extension, not just those listed above.

An example of each of the above files, with an explanation of the data fields contained within the file, can be found under RSLogix 5 [ASCII delimited text file examples](#) on [page 73](#).

## Export database

Use the export functionality in RSLogix 5 to make the database documentation that is part of your current RSLogix 5 project available to other projects.

### To export a database

1. Select **Tools > Database > ASCII Export**.
2. Click the tab for the desired output format: **RSLogix 5 A.I.**, **AB 6200**, or **CSV** (comma separated value).
3. Select which database components to export and specify the filename(s). Click **Help** for more information about any of the options on the dialog box.
4. When exporting the documentation database to A.I. or AB 6200 formats the symbols, descriptions, and instruction comments may be truncated due to size restrictions imposed by the PLC-5 A.I. and 6200 Series databases. This may result in conflicts in the exported data. So, unless you have accounted for differences between description lengths in RSLogix 5 and PLC-5 A.I. Series programming software and planned your description text accordingly, select **Treat Source Description as 1 80-character line**.



After it has been exported, you can edit the ASCII file with a text editor, or load the file into another database.

**RSLogix 5 ASCII delimited text file examples**

The examples in this section show how the documentation would be represented in an exported ASCII text file using the RSLogix 5 output format.

Each field in a line of ASCII text is enclosed by quotes and separated by a comma. Empty fields are represented with quotes with nothing between them.

**Address symbols and descriptions (.EAS files)**

"B3/0","0","SYMBOL","description","","","","0","","","0","GROUP\_NAME"

ASCII Field #	Maximum Length	Contents
1	39 characters	Address
2	N/A	Scope (0=global, 2-255=local program file number)
3	20 characters	Symbol
4	20 characters	Description line 1
5	20 characters	Description line 2
6	20 characters	Description line 3
7	20 characters	Description line 4
8	20 characters	Description line 5
9	12 characters	Device code (always 0 for addresses that are not real I/O)
10	9 characters	Device description above
11	9 characters	Device description below
12	N/A	Disable cross-reference flag (0=enabled, 1=disabled)
13	20 characters	Symbol group name

**Page title and rung descriptions (.ERP files)**

"RUNG000002-000002","page title","rung comment\"

ASCII Field #	Maximum Length	Contents
1	39 characters	Data table address or rung identifier
2	80 characters	Page title
3	64K	Rung description

**Instruction comments (.EIC files)**

"B3/0","XIC","instruction comment","","",""

ASCII Field #	Maximum Length	Contents
1	39 characters	Address
2	3 characters	Instruction type
3	20 characters	Comment line 1
4	20 characters	Comment line 2
5	20 characters	Comment line 3
6	20 characters	Comment line 4
7	20 characters	Comment line 5

### Symbol groups (.ESG files)

"GROUP\_NAME","description"

ASCII Field #	Maximum Length	Contents
1	20 characters	Symbol group name
2	80 characters	Symbol group description

### A.I. ASCII delimited text file examples

These examples show how a line might appear in an ASCII text file exported using the A.I. output format. Each field in a line of ASCII text is enclosed by quotes and separated by a comma.

#### Address symbols and descriptions (.EAS files)

"B3/0","0","SYMBOL","description","","","","0","","","0"

The field breakdown of A.I. ASCII delimited text is the same as shown for RSLogix 5 ASCII output format, except the symbol and description fields are limited to 15 characters and there is no symbol group field.

#### Page title and rung descriptions (.ERP files)

"RUNG002-0002","page title","rung comment\"

The field breakdown of A.I. ASCII delimited text is the same as shown for RSLogix 5 ASCII output format.

### AB 6200 ASCII delimited text file

AB 6200 documentation database files saved to ASCII text format contain keywords. Keywords tell the software whether the information immediately following the keyword is a rung comment, an instruction comment, an address comment, or a symbol. Some examples are shown below.

SYM B3/0 SYMBOL

SYM O:17/03 UPLOAD

AC B3/0 "description"

AC I:21/03 "AIR STOP CLOSED LIMIT SWITCH\"

IC XIC N7:10/0 "Surge Tank High Level Alarm"

RC CTD C5:0 " (carriage return)

This is an example of a rung comment with quotation\ marks  
and carriage returns at the beginning and end.

" (carriage return)

### Key Words

The key words used in AB 6200 documentation database files are:

SYM – symbol

AC – address comment (description)

IC – instruction comment

RC – rung comment

FCN – SFC name

FCI – SFC comment

IOS – I / O module symbol

IOA – I / O module address comment

IOC – I / O module configuration information

### CSV (Comma Separated Values) format

Search "CSV format for database import / export" in the RSLogix 5 online help index for complete details.



## More about entering ladder logic

This chapter provides information that you can use to make editing your ladder logic easier.

**Tip:** Shortcut methods exist for most editing functions within RSLogix 5. A list of hot keys (keyboard shortcuts) that enable you to maneuver the software without a mouse can be found in a help file that you can print out. To access this file, click the **Help** folder in the project tree, and then double click on **Using the Keyboard**. A.I Series dot commands are now supported by RSLogix 5. To access A.I. Command Portal Emulation, press **[Alt.]**. Type the letters of the dot command (such as EI to insert a rung) and press **[Enter]**. For more information see [Dot commands](#) on [page 80](#).

## Backing up your work

Remember to back up your work as you develop your ladder logic programs. RSLogix 5 uses two types of backup functions that you can access at any time, and provides you with an auto-recovery file in the case of a power failure. All of these files contain the entire description database associated with the project.

- **Auto-Backup** files are created automatically each time you save a project. To preset how many backups should be retained for any project, select **Tools > Options** and click the **Preferences** tab. Enter a number in the **Number of Backups** field.  
Auto-backup files (saved as .RSP files) have the letters BAK and a series of numbers (000 to 999) appended to the filename. For example, an auto-backup created for project TEST.RSP might be identified as TEST\_BAK000.RSP, and a more recent backup might be identified as TEST\_BAK001.RSP.
- **Compressed Format Backup** files are typically generated for archiving or giving to another user. Compressed format backup files include the .RSP and all database files for the project compressed into a single .RP1 file. Any auto-backup files that may be included in the project folder are not included in the compressed backup. To generate a compressed-format backup file, select **File > Backup Project**.

To restore an auto-backup file or a compressed format backup file, simply select **File > Open** and open the .RSP backup file or the .RP1 file.

## Crash recovery

If you experience a power interruption, RSLogix 5 provides you with a recent backup file containing current edits.

RSLogix 5 automatically background saves your project while you are working with it. (Go to **Tools > Options, Preferences** tab to set the interval at which these AutoSaves occur.) This auto-generated recovery file (internal RSP file) is only available to you the next time you open a project if you have a system crash or your power is interrupted. When attempting to open a project after a power failure RSLogix 5 prompts you with two options.

- You can open the latest AutoSave version of the file. This retains all edits (with the exception of pending database edits) made up until the time of the last AutoSave before power failed. Once you save this file it becomes your working version.
- You can revert to the last saved version of the file. This means that any editing you may have done between the time you last saved the file and the time of the system crash will be lost.

---

**Important:** You must have saved or closed the file you are working on at least one time for the auto-recovery process to work. Therefore, it is good practice to save the file immediately after beginning a new project. This ensures that your auto-recovery process can begin properly.

The AutoSave feature of RSLogix does not affect the database, and any pending changes to the database will not be retained using AutoSave.

---

## Shortcuts for ladder editing

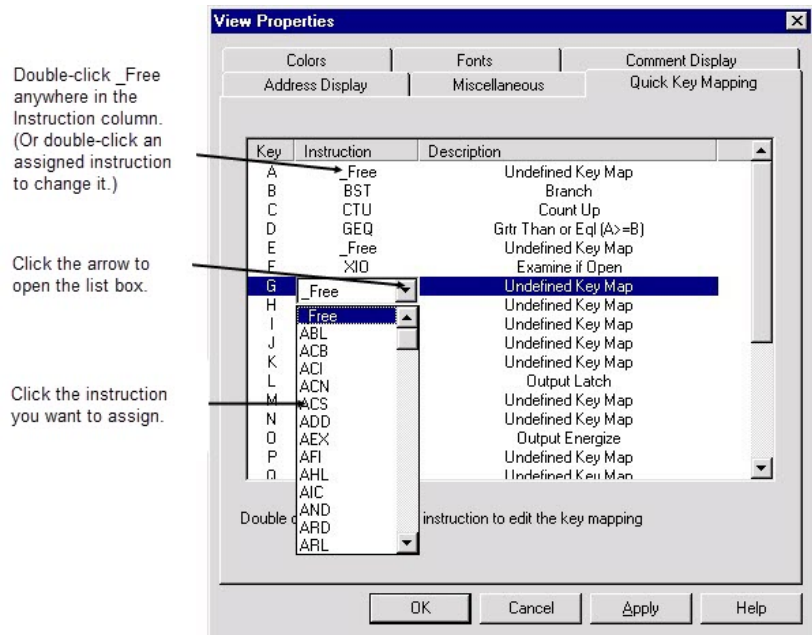
RSLogix 5 provides several methods for rapidly entering instructions: Quick Key Mapping, ASCII editing, and A.I. Series style dot commands.

### Quick Key Mapping

To make your programming tasks faster, RSLogix 5 lets you map any available alphabetic key (A-Z) on your computer keyboard to a ladder logic programming instruction.

### To assign quick keys

1. Select **View > Properties** (make sure you have a program file window opened and active or you will not be able to select **Properties** from the **View** menu). Click the **Quick Key Mapping** tab.



2. Double-click \_Free anywhere in the Instruction column. (Or double-click an assigned instruction to change it.)
3. Click the arrow to open the list box.
4. Click the instruction you want to assign.

### To use Quick Keys

1. Click a rung number in the ladder window to insert your logic rungs before.
2. Select **Edit > Quick Key Mode**, or instead press **[Ctrl-E]** on your keyboard. This inserts an empty rung into your program and places the software in **Quick Key Mode**. Assigned keys are listed at the top of the Ladder View.
3. Type the alphabetic quick keys that you have assigned to instructions. The instructions will be placed on the rung in the order that you type their quick key assignments.
4. To exit **Quick Key Mode**, go to the **Edit** menu and deselect **Quick Key Mode**, or press **[Ctrl-E]** again.

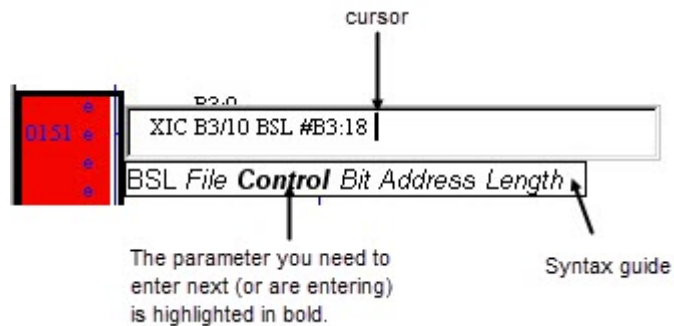
## ASCII editing

ASCII Editing is a function of RSLogix 5 that lets you modify instructions using

ASCII instruction mnemonics instead of having to modify instructions using the ladder editor.

**To edit a rung:**

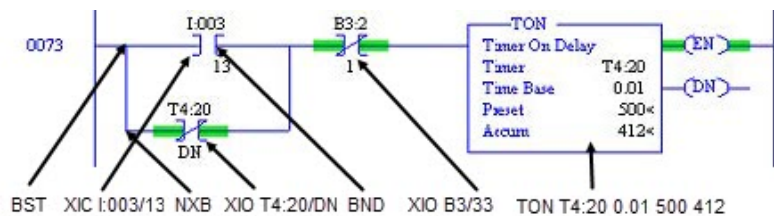
1. Select any instruction on the rung or the rung number and press [/]. Make sure you press the forward slash key rather than the backslash. You can also double-click the rung number to open the ASCII box.
2. An ASCII editing box opens. For a rung that already contains logic, the existing ASCII instructions appear in the box so you can edit them. As you type an instruction, a syntax guide appears to help you with the parameters.



3. Press [Enter] to accept your edits or you can press [Esc] to discard them.

**Example ASCII rung**

A sample rung is shown below in both graphical and ASCII format with lines showing which ASCII mnemonic corresponds to which part of the graphical rung.



BST=branch start

NXB=next branch

BND=branch end

**Dot commands**

In A.I. Series software dot commands provided a very rapid means of not only editing ladder logic, but also accessing various functions of the software such as



Advanced Diagnostics search or Who Active. RSLogix 5 emulates the A.I. Series Command Portal.

### To use dot commands in RSLogix 5

1. Press [**Alt-.**], that is, hold down **Alt** and press the period.
2. Type in the shortcut command. For example, type **EI** (Edit Insert) to insert a rung.

**Tip:** You can combine dot commands with ASCII editing to rapidly enter ladder logic. Press [**Alt - .**], type EI, EA, or ER to insert, append, or replace a rung, type a forward slash (/) without a space before it, type the ASCII rung, and press [**Enter**]. For example,  
EI/XIC I:001/1 OTE O:002/5.

3. Press [**Enter**].

For a list of dot commands, see online help. Select **Help > Contents**. Click the **Index** tab and type dot commands. Click **Display**.

## Other shortcuts and tips

Remember to use the right mouse button to access functionality whenever possible. The right mouse button provides you with context menus that list editing options. Keyboard users can press [**Shift + F10**] to access a right mouse menu.

Remember that you can press [**F1**] (or click **Help** when available) on any instruction, or within any window to access help. For more information about online help see Chapter 10, [Getting the information you need on page 111](#).

## Selecting multiple rungs

You can select multiple rungs by holding down **Ctrl** and clicking the left mouse button on every rung you want to select. You can also select a range of rungs by holding down **Shift** and clicking the beginning rung and ending rung.

## Jumping to a rung

You can jump to any rung in your project by selecting **Search > Goto**. You can go to a rung in the current program file or you can go to a rung in another program file within the same project. You can also press [**Ctrl + G**] to access the **Goto Rung** dialog box.

## Keyboard shortcuts

A list of hot keys (keyboard shortcuts) that enable you to maneuver the software without a mouse can be found in a help file that you can print out. To access this file, expand the **Help** folder in the project tree, and then double-click on **Using The Keyboard**.

## Addressing

You can use several different methods to address instructions. You can enter an address by:


- Manually typing it in

- Dragging addresses from data files
- Using copy and paste from program to program


**Tip:** You can drag-and-drop rungs, branches, instructions, and addresses from file to file or from the database to a file. To drag-and-drop, position the mouse pointer over a file element, click and hold down the left mouse button and drag the element to another location, and then release the mouse button. Red boxes indicate valid locations; these turn green when properly selected.

## Branching


### Add a branch

Click this button  on the instruction toolbar to place a branch in your ladder logic. If your cursor is on an instruction, the branch is placed immediately to the right of the instruction. If your cursor is on the rung number, the branch is placed first on the rung.

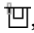
### Move a branch

Click on the upper left corner of a branch  and drag to move the entire branch structure to another location in your ladder logic program. Valid release points will be visible on the ladder display.

### Expand a branch

Click the right leg of the branch , then drag the leg to the right or left. Valid release points will be visible on the ladder display.

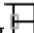
### Nested branches

Place the cursor at the upper left corner of a branch leg , right-click, and select **Append New Branch** to place another branch structure within the original branch structure.

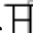
### Parallel branches

Place the cursor at the bottom left corner of a branch leg , right-click, and select **Extend Branch Up** or **Extend Branch Down**.

### Copy branch leg

Click on the left edge of the branch leg  you want to copy. In the picture at the left, this is the center leg. Right-click and select **Copy**. Finally right-click on a rung or instruction in your logic and select **Paste** to insert the rung leg.


### Copy entire branch structure

Select the right leg of the branch structure , right-click and select **Copy**. Finally click on a rung or instruction in your logic and select **Paste** from the right mouse menu to insert the rung structure.

### Delete a branch

Place the cursor at any location on the branch and click the right mouse button. Select **Delete**. If you cut or delete a branch, all instructions on the branch are also deleted.

## Undo operation

The undo button  reverses your last action. You can use this button to walk through (and undo) your previous actions one at a time. RSLogix 5 remembers up to 200 previous actions.

If you want to undo a move operation, you must click undo twice. This is because RSLogix 5 considers a move a series of two actions (copy and cut). You have to let RSLogix know that you want both the copy and the cut undone. If you click undo only one time when trying to undo a move, the move appears to be a copy, and you will see the moved element appear at both locations.

## Online editing

The online editing function lets you monitor and correct your ladder program when your programming terminal is connected to a PLC-5 processor. Online editing functions consist of inserting, replacing, and deleting rungs in an existing ladder program while online with the processor.

While multiple terminals may be simultaneously connected to the same processor, only one programming device at a time can perform online edits of the program. The response of other terminals to a processor edit depends on the processor type and firmware revision. For all Classic and older New Platform PLC-5 processors, the other terminals will be forced offline and must upload the entire program again. For later New Platform revisions, the other terminals will remain online while the changed program file is automatically uploaded in the background.

Within your logic program RSLogix 5 places edit zone markers in the margin to the left of the left rail. These letters signify edit zones and they indicate the type of ladder program edit.

Lower case zone markers indicate edits that exist only in the computer memory. Upper case zone markers indicate edits that exist in the processor memory. After successfully assembling the edited rungs, the zone markers disappear.

**Tip:** You can search for zone markers in your project the same way you might search for an instruction or an address. Select **Search > Find**. Click **Rung Zones** and select the type of edit zone you want to search for.

## Lower-case zone markers

Lower-case zone markers	Description
e	(Offline and online) These rungs are currently under edit within the computer RAM. If you are working offline, after a successful program verification the lower-case e will disappear and the edits will be incorporated into the program. If you are working online, after accepting the rung, the lower-case e will be replaced by an upper-case I indicating that the rung is now in the controller's memory and will be inserted into the program file.
i	(Online) These rungs are to be inserted into the program. Rungs marked with a lower-case i currently exist in the computer memory and will not be entered into the controller until the rung is accepted. After the rung is accepted, the lower-case i is replaced by an upper-case I.

Lower-case zone markers	Description
r	(Online) These rungs are to be replaced in the ladder program. Rungs marked with a lower-case r currently exist in the computer memory and will not be entered into the controller until the rung is accepted. An r marked rung is always preceded by an e marked rung. After the rung is accepted, the lower-case r will be replaced by an upper-case R.
d	(Online) These rungs are to be deleted from the ladder program. Rungs marked with a lower-case d indicate a deletion reflected in the computer memory. This deletion will not be reflected in the controller until the rung is accepted, at which time it will be replaced by an upper-case D.

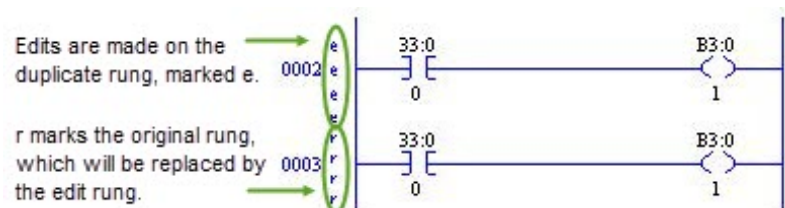
## Upper-case zone markers

Upper-case zone markers	Description
I	(Online) These rungs have been inserted in the controller's logic program. You can test the edits by selecting <b>Edit &gt; Online Edits &gt; Test Edits</b> to see how the rung works in the online ladder program. Click <b>Assemble Edits</b> to finalize the rung insertion and complete the editing process. (The Test Edits and Assemble Edits functions are also available by right-clicking on the rung number.)
R	(Online) These rungs have been replaced in the controller's logic program. Rungs marked with an upper-case R continue to function in the program until you select <b>Test Edits</b> to see how the new rung works in the online program. Select <b>Assemble Edits</b> to finalize the replacement and complete the editing process.
D	(Online) These rungs have been deleted in the controller's logic program. Rungs marked with an upper-case D continue to function in the program until you select <b>Test Edits</b> to see how the program functions without the rungs in the online program. Select <b>Assemble Edits</b> to finalize the deletion and complete the editing process.

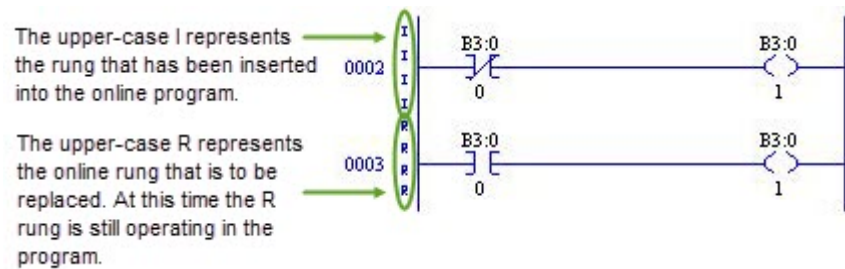
## Online editing example

This example replaces an XIC instruction with an XIO instruction with the same address while online.

1. Select the rung in the program that requires editing and then select **Edit > Rung Edits > Start Rung Edits** or double-click the rung number. A duplicate of the selected rung (preceded by the e edit zone marker) is shown in your program, with the original rung marked with r. See the example below.



2. Make the edits to the rung. The lower-case edit markers do not change since they represent changes that only exist in the computer memory; these changes are not yet a part of the online program in the controller. (At this step you can select **Cancel Rung Edits** to cancel the edits you have made to the rung.)
3. Select **Edits > Rung Edits > Accept Rung** (or right-click the rung number and select **Accept Rung Edits**). This changes the edit zone markers and places both rungs in the controller memory.



At this point you can still right-click the I-marked rung and select **Cancel Edits** to cancel the accepted I-marked rung and retain the originally programmed R-marked rung instead.

4. Select **Test Edits**. The I-marked rung takes precedence. The program in the controller will operate with the inserted rung, and the R-marked rung will be ignored.
5. Select **Assemble Edits**. All edit zone markers disappear and the edits are incorporated into the online program. There is no Undo option after online edits have been assembled.

Going from online to offline with rungs under edit removes the online edits in RAM. Make sure you have accepted edits before going offline if you want any changes retained in the processor.

## Online editing restrictions

During an online editing session you cannot:

- Resize data table files
- Create or delete program files
- Change program file protection

## Configuring MCPs (Main Control Programs)

As many as 16 MCPs can run simultaneously. MCPs may be any mix of ladder files, SFC files, or structured text files.

### To configure MCPs

1. Double-click the S2 data file icon in the project tree.

2. Click the **MCP** tab. Specify which program files will function as MCPs by typing their file numbers in the Program File column(s).
3. Click in the check boxes to indicate whether each MCP is to be enabled or disabled, and whether you want to skip the I/O scan at the end of the MCP's execution.

---

**Important:** When an MCP is disabled, outputs remain in the state that they were in during the last scan (that is, all actions remain active). Make sure that you consider any outputs that might be controlled within that MCP before disabling it; otherwise injury to personnel or damage to equipment may result.

---

You can view scan time data for executing main control programs on the **Scan Times** tab of the S2 status file.

## Configuring Interrupts

### STI (Selectable Timed Interrupt)

A Selectable Timed Interrupt (STI) causes the processor to periodically interrupt program execution to run an STI program once to completion. Afterwards, the processor resumes executing the original program file from the point where it was interrupted.

Select a program file for the STI by double-clicking the Processor Status icon in the **Controller** folder in the project tree. Then click the **STI** tab (you may need to use the arrow buttons to see more tabs) and enter the information needed to define the STI. Press **Help** if you need more information.

### PII (Processor Input Interrupt)

A Processor Input Interrupt (PII) specifies when an event-driven input causes the processor to interrupt program execution and run a PII program once to completion. After the PII executes, the processor resumes executing the program file from the point where it was interrupted.

Select a program file for the PII by double-clicking the **Processor Status** icon in the **Controller** folder in the project tree. Then click the **PII** tab (you may need to use the arrow buttons to see more tabs) and enter the information needed to define the PII. Press **Help** button if you need more information.

## Using the structured text editor

Structured text is only supported on Enhanced (New Platform) PLC-5 series C, revision C and later processors.

Structured text is an English-like set of instructions and mnemonics that you can use to perform most of the same tasks that you already perform with ladder logic. The structured text language resembles BASIC and is based on the International Electrotechnical Commission (IEC) 1131-3 standard for programmable controller software.

Use structured text as an alternative to, or in conjunction with, ladder logic or Sequential Function Charts (SFCs). Structured text supports complex expressions and both logical and symbolic addressing. Use structured text or ladder logic to program MCPs, subroutines, or actions and / or transitions in SFCs, depending

on which type of programming best suits your application and how much memory you have available.

To learn more about creating structured text files, click the **Help** menu in RSLogix 5, select **Contents**, and then double-click the Structured Text Editor book in the **Contents** tab.

## Using the sequential function chart (SFC) editor

Sequential Function Chart (SFC) programming is a method of programming complex control systems at a more highly structured level. An SFC program is an overview of the control system, in which the basic building blocks are entire program files. Each program file is created using familiar ladder logic. The SFC approach coordinates large, complicated programming tasks into smaller, more manageable tasks.

To learn more about creating sequential function chart files, click the **Help** menu in RSLogix 5, select **Contents**, and then double-click the **Sequential Function Chart (SFC) Editor** book in the **Contents** tab.





## More about monitoring data

In addition to allowing you to view changing data by opening multiple data table windows, RSLogix 5 provides you with several customized methods for monitoring data.

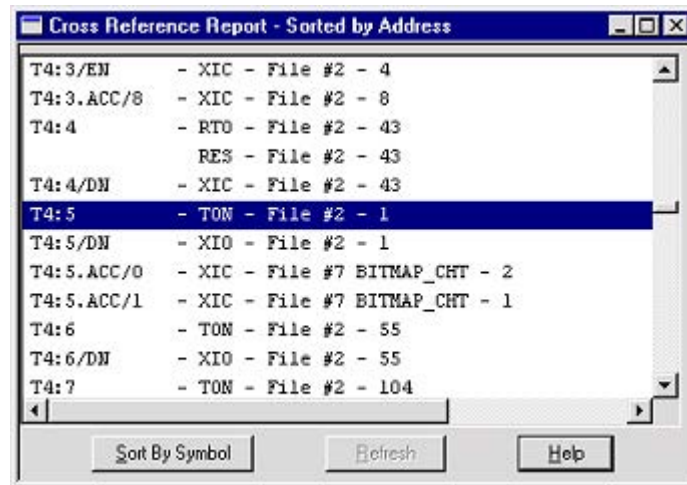
- Cross Reference
- Forces
- Custom Data Monitor
- Recipe Monitor
- Custom Graphical Monitor
- Histograms
- Trending

The custom data monitor (CDM) file lets you compose lists of addresses that you monitor frequently, or lists of addresses with interrelated functionality, so that you can view, document, protect, or even force the changing data values from a single source file.

When you are online, you can use histograms and trends to see how your program is behaving over time, by examining bits as the program runs in the PLC-5 processor. A trend logs the data for more than one address (typically related) over a period of time. Contrast this with a histogram which logs the data contained in a single address over a period of time.

## Cross Reference

A Cross Reference Report lists all logical addresses in your project and gives the location of every occurrence of each address. The report includes the following data: address, symbol, instruction mnemonic, file # (and name), and rung #. You can sort the Cross Reference Report by symbol or by address.



Display a Cross Reference Report in one of two ways:

- Double-click the **Cross Reference** icon in the project tree (in the Data Files folder).
- Right-click an address in your ladder logic and select **Cross Reference**. The same report displays, but the address you had selected is highlighted.

As an alternative to a Cross Reference Report, you can choose to display cross reference information right on the ladder view. To use this feature, select **View > Properties**, and click the **Address Display** tab. Make sure either or both check boxes are checked in the **Cross Reference Display** area of the dialog box.

**Tip:** You can disable cross references to get online faster. Select **Tools > Options**. Click the **XRef/Address Wizard** tab and uncheck the **Enable Cross Reference Online** box.

## Forces

To monitor forces, double-click the input or output force file in the project tree.

You can also use the **Forces** dialog box to install and enable or disable forces while you are monitoring your file offline, or in any processor mode while monitoring your file online. Use the right-click menu on a bit in the Forces dialog box to force the bit on or off. For more information about forcing, see the online help.

---

**Important:** All force functions can result in sudden machine movement, possibly injuring personnel or equipment. Use extreme caution when using forces.

---

## Custom Data Monitor (CDM)

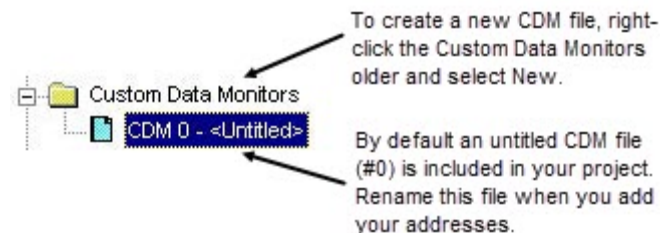
The Custom Data Monitor function can be used to monitor bit addresses and word addresses.

Addresses in a custom data monitor list can come from any data table file. They do not have to be from the same data table file.

Features of the custom data monitor include:

- CDM lists can contain any type of address. If you enter the address of a structure, such as a timer, you can expand it to show all of its members.
- CDM lists can contain ASCII comments to help you clarify bit or word listings, or annotate the CDM file.
- You can define up to 256 (CDM) lists per project (0-255, inclusive).
- The CDM name is limited to 20 characters.
- The CDM description is limited to 59 characters.
- You can click and drag addresses from the data tables and the ladder logic to the CDM.
- You can use the **[Ctrl]** and **[Shift]** accelerator keys to drag more than one address at a time from the data tables.
- You can edit address descriptions from the CDM.

To access the Custom Data Monitor feature, double-click the CDM file icon located in the project tree.



To insert additional addresses or symbols in the monitor list press **[Insert]**. A new row will open and you can type in or drag an address from your ladder program or data table into the empty Address slot. The current value of that address is listed in the **Value** column to the right of the address. If a description has been assigned to that address, it is also displayed.

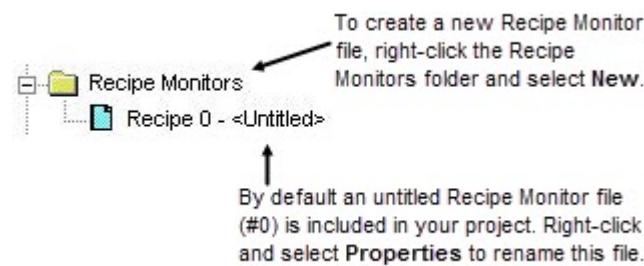
For more information about using Custom Data Monitor, press **[F1]** while the CDM window is active.

## Recipe Monitor

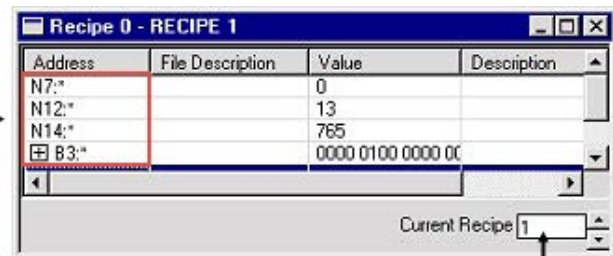
The Recipe Monitor is a variation of the Custom Data Monitor. The Recipe Monitor is used specifically for monitoring groups of related indirect addresses with a common index.

Many PLC projects contain data tables in which each element is relevant for a different mode of operation. When these data tables are grouped such that element 1 of each file corresponds to mode 1 of the assembly line used to make product 1, this is referred to as a "recipe". The easiest way to keep track of recipes is to use a common reference address with indirect addresses to each of the related data files. The Recipe Monitor provides an easy and intuitive interface for this type of application.

To access the Recipe Monitor feature, double-click the **Recipe** file icon located in the project tree.



Drag a data file from the project tree to the Recipe Monitor. Note that an asterisk (\*) represents the indexed part of the address. If you type in or drag an address from the ladder, be sure to use an asterisk to indicate the indexed part.



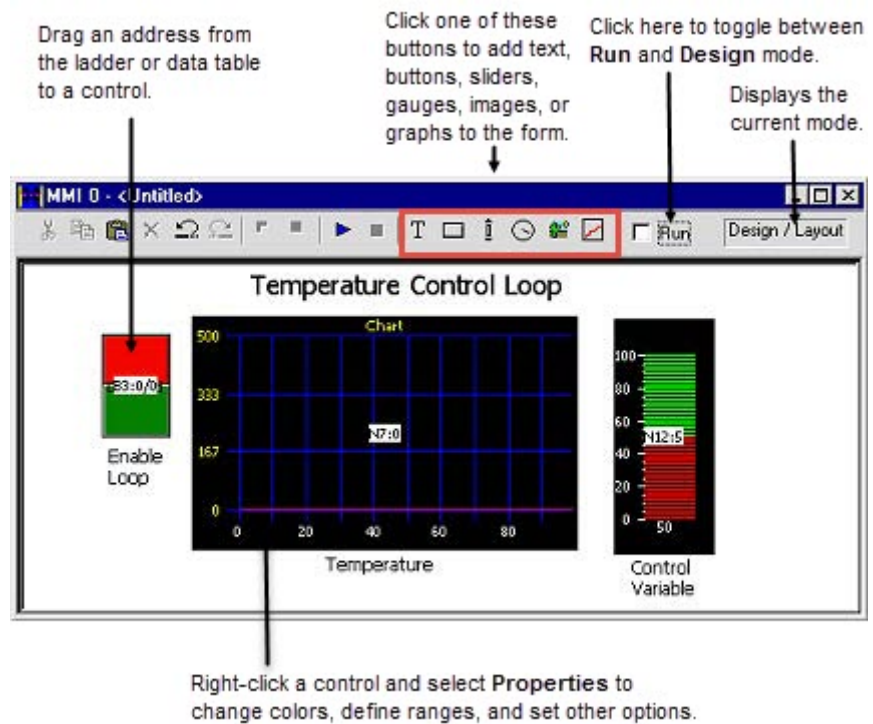
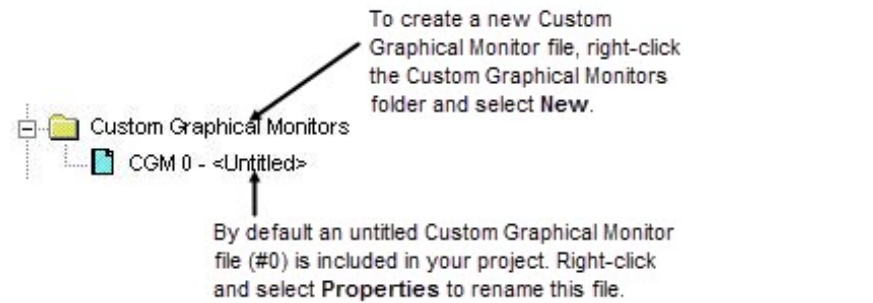
Set the index value.

For more information on the Recipe Monitor press [F1] while the **Recipe** window is active.

## Custom Graphical Monitor

The Custom Graphical Monitor provides the data monitoring of a Custom Data Monitor, but in an easy to interpret graphical representation. The Custom Graphical Monitor is a form on which you can place ActiveX® controls for buttons, sliders, gauges, and charts as well as text and imported images. As is typical of ActiveX controls, you place and configure controls with the form in Design mode and switch to Run mode to activate the controls.

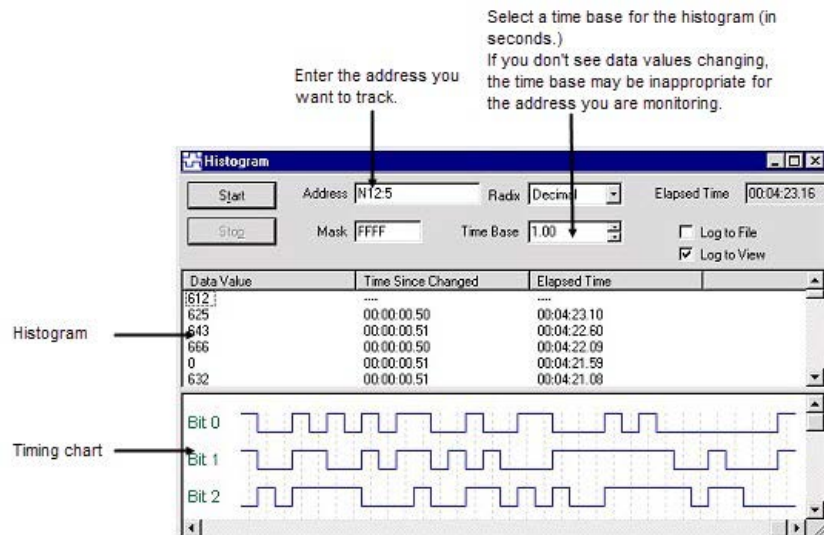
To access the Custom Graphical Monitor feature, double-click the CGI file icon located in the project tree.



## Histograms

Use the histogram functionality in RSLogix 5 to get information about how an address's data value changes over time.

You must be online with the PLC-5 processor to access the histogram function. Select **Comms > Histogram** to display the **Histogram** dialog box.



By clicking **Start** in this dialog box, the histogram function sends a message to the PLC-5 processor to begin logging data. Each time the address value changes, the processor stores the value for the address in a histogram buffer, logging both the new value and the time interval between value changes. This data is represented in the top portion of the histogram display window.

If you frequently log certain data, you can save the configuration and simply load it without having to enter new parameters each time. Use **Save Config** and **Load Config**, accessible from the right mouse menu, for this functionality.

## Trends

A trend logs the data for more than one address (typically related) over a period of time. Contrast this with a histogram which logs the data contained in a single address over a period of time.

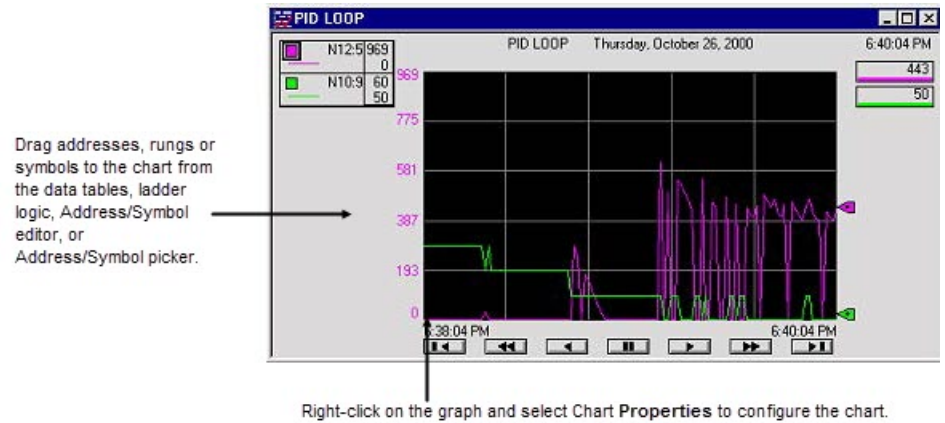
This option provides the features of the RSTrendX Viewer plus remote trending capability. The RSTrendX Viewer is an ActiveX control for displaying process data in a trend or strip chart recorder format. It is based on the Viewer display in the RSTrend® Data Acquisition and Trending software.

### To create a trend chart

1. Right-click the **Trends** folder in the project tree and select **New**.
2. Type a name for your trend chart in the **Trend Name** field. Then click **OK** to create an empty chart. The name can be up to 80 characters in length. An icon for the new chart appears under the **Trends** folder in the project tree. Whenever you want to open the trend chart double-click the icon. Trends are saved with the project. Logged data is not retained.

You can create a trend configuration while offline or online. You must be online to trend data.

The following example shows a Trend for a timer T4:9.



The legend at the left side of the display window contains:

- A colored box representing the pen color. The color can be changed by double-clicking on the box and then selecting a new color from the available color chart.
- The symbol name identifying the pen. In the display above, no symbol was defined for any of the addresses so the address is displayed instead.
- The engineering units if they are defined. N / A means this is currently not available (not defined) for the selected pen.

**Tip:** To access the TrendX help file for more detailed information, right-click on the chart and select **Chart Properties**. Click **Help**. This opens the TrendX help topic for the **Properties General** tab. Click **Help Topics** to browse the TrendX help table of contents or index.





## Saving and loading processor memory in PC5 libraries

PC5 library files are ASCII text files of the processor memory that contain the ladder logic, SFC files, structured text, data table files, and force tables. By exporting (saving to file) and importing (loading into a new project) these PC5 files, you can reuse existing work. PC5 files can be opened in any ASCII text editor and modified for use in your projects.

### Things to remember about library files

- Only verified project data can be saved to a .PC5 file.
- Exported PC5 libraries can contain symbols that are 20 characters in length. When importing a PC5 library to PLC-5 A.I. Series, symbols will be truncated to 15 characters. For example, the symbol name UNLOAD\_STRING\_INDEX would be truncated as UNLOAD\_STRING\_I.
- Graphics characters are not allowed.
- If importing into PLC-5 A.I. Series or 6200 Series software, the name of the .PC5 file is limited to eight characters. If importing into 6200 Series software, use only A-Z, 0-9, or the underscore character.
- The file extension of the ASCII processor memory file must be PC5.
- You cannot import or export a CAR (custom application routine) file.
- If you are using passwords and privileges, the privilege configuration information is encrypted in the exported file to help make unauthorized access difficult.
- The text editor you use with an ASCII text file must produce only printable ASCII characters, with no control characters or hidden characters.

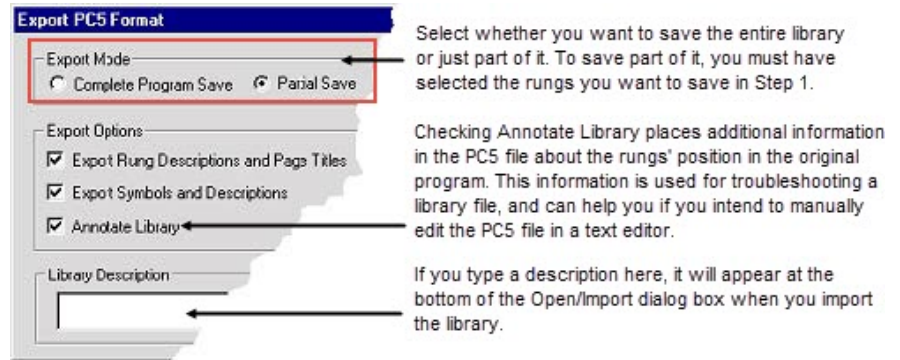
### Exporting libraries

You can save entire projects or partial libraries.

#### To save a library

1. If you want to save a partial library, select the rungs you want to save. For a full save, skip this step.
2. Either right-click the rungs and select **Copy to PC5 Library**, or select **Edit > Copy To File**.

3. Supply the path and filename, and click **Save**.
4. Select the options you want for the export in the **Export PC5 Format** dialog box and click **OK**.



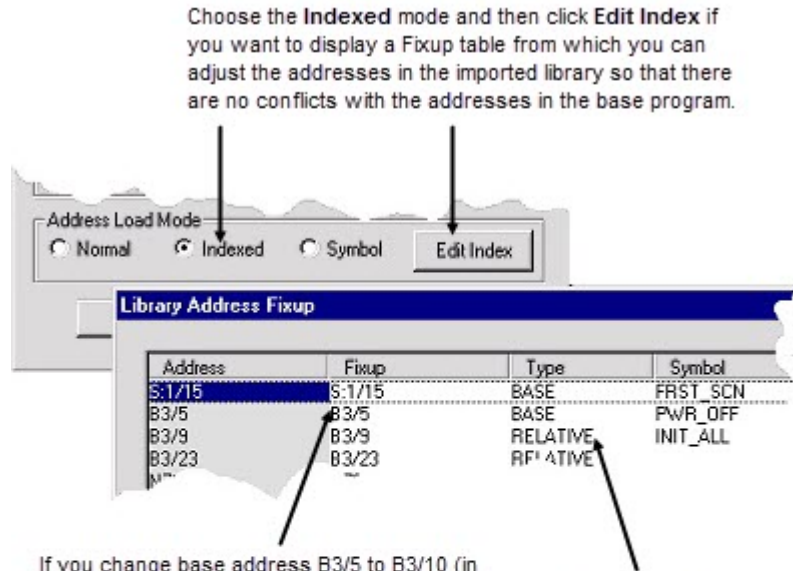
## Importing libraries

Importing a .PC5 library allows you to reuse existing work by loading portions of ladder logic that were previously exported, into the current file that you have opened on your computer. Importing a .PC5 library converts the processor memory file, previously exported as a .PC5 ASCII file, to the RSLogix 5.RSP format.

### To import a library

1. Open the project into which you want to load the library. If you are loading a complete program image into an existing project, data table values in the library will overwrite values in the base program, and incoming rungs will be appended to existing program files.
2. If you are loading a partial library, select the rung in your program that you want the library rungs to precede. The library rungs will always be placed before the rung you select. Data table values from the library will overwrite existing data table values for those addresses already present in the base project.
3. Select **Edit > Paste From file**. (Or right-click a rung and select **Paste From PC5 Library**.)
4. On the **Open/Import** dialog box, select the file you want to import and click **Open**.
5. On the **Import PC5 Format** dialog box you are asked to make some choices about how you want some of the imported files treated with regard to any existing documentation and addressing in the current file.

- Choose an Address Load Mode for the library and click **OK**. Click **Help** for more information. See the diagram below for information on the **Indexed** mode.



If you change base address B3/5 to B3/10 (in the Fixup column) and press [Enter], the addresses relative to B3/5 change accordingly. Each relative address is offset by the change applied to the base address. In this example, relative address B3/9 would change to B3/14, and so on. Relative addresses include all addresses in the list in the same data file up to the next base address. The address column continues to display addresses as they were before you made any changes.

To change the address type, double-click it and select either Global, Relative, or Base. An address set to Global is not affected by indexing to a previous base address.

## Sample PC5 file

The following sample file is not a complete file. It has been condensed to show a sampling of each section. Read the section [Creating or editing a PC5 ASCII text file](#) on [page 103](#) for more information about each section of the library file and information on comments (text enclosed between percent signs %).

The section identifiers in the left margin are not a part of the file, they have been included so that you can more easily identify each of the sections in the PC5 library file.

### Program Header

```
START PLC5_40VL SERIES_C REV_C COMPLETE
```

### Data Table

DATA O:177

% O:000 % 0X0000 0X0000 0X0010 0X0000 0X0140 0X0000 0X0003 0X0000

% O:010 % 0X0000 0X0000 0X0000 0X0000 0X0000 0X0000 0X0000 0X0000

% O:020 % 0X0000 0X0000 0X0000 0X0000 0X0000 0X0000 0X0000 0X0000

% O:030 % 0X0000 0X0000 0X0000 0X0000 0X0000 0X0000 0X0000 0X0000

DATA I:037

% I:000 % 0X0000 0X0000 0X0000 0X0000 0X0000 0X0000 0X0000 0X0000

% I:010 % 0X0000 0X0000 0X0000 0X0000 0X0000 0X0000 0X0000 0X0000

% I:020 % 0X0000 0X0000 0X0000 0X0000 0X0000 0X0000 0X0000 0X0000

% I:030 % 0X0000 0X0000 0X0000 0X0000 0X0000 0X0000 0X0000 0X0000

..

.

.

### **Project Name**

PROJECT "ICOM5DM7"

2 "MAIN\_LADDR"

3 "PID\_SUB\_RT"

4 "SUB\_RT\_2"

6 "SUB\_RT\_4"

7 "BITMAP\_CHT"

8 "TREND"

9 "WHEELPROG"

10 "WINVIEW"

## Program Files

LADDER 2

% Rung: 0 %

SOR XIC B3/0 XIC I:002/1 OTE O:004/0 EOR

% TITLE/RUNG DESCRIPTION ATTACHED TO:RUNG

TITLE:Start Up Diagnostic Check

RUNG DESCRIPTION:

### Sample Rung Description

Rung Descriptions can be up to 64K bytes per rung, with 200 lines displayed

The first rung description might explain the program or give useful information

%

% Rung: 1 %

SOR BST XIC I:003/4 NXB XIO T4:5/DN BND XIC B3/10 TON T4:5 1.0  
450 315 EOR

% Rung: 2 %

SOR XIO T4:9/DN XIC B3/96 TON T4:9 0.01 150 17 EOR

% Rung: 3 %

SOR LIM 1 T4:9.ACC 40 OTE B3/0 EOR

% Rung: 4 %

SOR XIC T4:3/EN XIC I:003/0 OTE B3/65 EOR

% Rung: 5 %

SOR XIC B3/28 BST OTE B3/88 NXB OTE O:004/6 BND EOR

% Rung: 6 %

SOR BST XIC B3/33 NXB XIO T4:0/DN BND TON T4:0 0.01 500 473 EOR

- 
- 
- 

**Force Table**

FORCE FO:177

% ON        OFF %

0X0000 0X0000 % FO:000 %

0X0000 0X0000 % FO:001 %

0X0000 0X0000 % FO:002 %

0X0000 0X0000 % FO:003 %

0X0000 0X0000 % FO:004 %

0X0000 0X0000 % FO:005 %

0X0000 0X0000 % FO:006 %

0X0000 0X0000 % FO:007 %

0X0000 0X0000 % FO:010 %

0X0000 0X0000 % FO:011 %

0X0000 0X0000 % FO:012 %

0X0000 0X0000 % FO:013 %

0X0000 0X0000 % FO:014 %

0X0000 0X0000 % FO:015 %

0X0000 0X0000 % FO:016 %

- 
- 
-

**Channel Config**

CONFIG \$4:2:-1

CONFIG \$4:0:347

% \$4:0:0 %

-1	-1	26688	7175	18954	7717	-1	-1
26688	7175						

% \$4:0:10 %

18954	7717		-1		-1	26688	7175
18954	7717	-1	-1				

% \$4:0:20 %

26688	7175	18954	7717	0	0	0	0	0
0								

% \$4:0:30 %

0	0	0	0	0	0	0	0	0
0								

% \$4:0:40 %

0	0	0	0	0	0	0	0	0
0								

% \$4:0:50 %

0	0	0	0	0	0	0	0	0
0								

.  
.br/.

**Creating or editing a PC5 ASCII text file**

A PC5 library file contains six sections: program header, data table, project name, program files, force table, and channel configuration.

## Specifying the program header

The first section of a PC5 file is the program header. The program header is a single line that contains:

- The processor type
- The processor series
- The processor revision

When you perform an export, the program header line contains the word COMPLETE or PARTIAL. This indicates whether the library contents include a complete program file or whether a partial library was saved. Every ASCII file must have a program header section, even if all the remaining sections are empty.

The following program header identifies the processor as a PLC-5 /15 series B revision A and specifies the library as a complete processor memory file.

```
START PLC5_15 SERIES_B REV_A COMPLETE
```

## Specifying the data table

The second section of a PC5 file defines the data table. The data table is the list of data table files that the processor uses. Files are defined by:

- The word DATA (upper or lower case)
- A letter indicating the file type
- The file number
- The last address defined in the file

Use a separate section for each data table file.

The following data table entry specifies binary file 3 containing 8 words (0-7). The values on the line following the data table entry specify the data values.

```
DATA B3:7
```

```
0      1      2      3      4      5      6      7
```

## Specifying the project name

The third section defines the project name and program file names. The project name is always stored in program file 0.

The following entry specifies DRILL1 as the project name of a processor memory file and MAIN\_LADDR as the name of program file 2. The project name and program names must be enclosed in quotes and can contain up to 8 characters (A-Z, 0-9, underscore \_ and blank spaces).

```
PROJECT "DRILL1"
```

```
2  "MAIN_LADDR"
```



## Specifying the program files

The fourth section defines the program files. Each program file can contain sequential function charts, ladder, or structured text programs. Each program file can have zero or more rungs. Each element and branch in a rung is represented by a mnemonic along with required data or address information.

The following entry defines ladder program file 3. The word LADDER (upper or lower case) starts the section with the program file number following. Each line that starts with an SOR instruction indicates the start of a rung of ladder logic; the EOR instruction indicates the end of a rung.

```
LADDER 3
SOR XIO I:030/3 XIC I:030/4 TON T4:10 1.0 32000 0 EOR
SOR XIC I:030/3 MOV T4:10.ACC T4:10.PRE EOR
```

## Specifying the force table

The fifth section defines the force table. The force table defines inputs and outputs which are forced into an on or off state. If this section is not included no forces are applied.

The following force table shows the force status for output address O:057. The force table is twice the size of the input/output image table.

The force file below is commented. Placing comments, enclosed by percent signs (%), is for your reference only. They are not imported into the processor or database.

```
FORCE FO:057
% ON      OFF %
0X0000 0X0000 % FO:000  %
0X0000 0X0000 % FO:001  %
0X0000 0X0000 % FO:002  %
```

## Specifying the channel configuration

The sixth section defines channel configuration data. This section contains channel configuration information as well as password and privilege and control net information. The lengths of each configuration section are variable depending on the configuration of the channel (i.e. channel zero will have more information than a DH+ channel).

```
CONFIG $4:1:411
-1      -1      8224      8224      8224      8224      -1      -1
8224      8224
```

8224	8224	-1	-1	8224	8224	8224	8224	-1
-1								
8224	8224	8224	8224	257	257	-1	0	0
0								
0	0	0	0	0	0	0	0	0
0								

### Annotating the PC5 file

You can place comments in the PC5 ASCII text file. Comments (text enclosed by percent signs %) are for your reference only. They are not imported into the processor or database.

## Features in RSLogix 5 Professional

RSLogix 5 comes in two editions: a Standard edition that provides basic ladder logic editing functions, and a Professional edition that provides additional functions to expand your automation solutions and make editing ladder logic simpler. This chapter briefly describes the features included in RSLogix 5 Professional.

### Microsoft Visual Basic for Applications support

RSLogix 5 Professional allows you to expand your automation solutions through Microsoft Visual Basic for Applications (VBA). VBA allows you add and edit Visual Basic code within the RSLogix 5 development environment. RSLogix 5 Professional includes an object model that you can access through VBA. VBA code created through RSLogix 5 Professional is stored in your projects' .RSP files.

You can run VBA code with RSLogix 5 Standard – to create or edit VBA code you must use RSLogix 5 Professional.

See the manual titled *RSLogix Automation Interface Reference Manual* for more information about using VBA in your automation solutions. This manual is included with RSLogix 5 Professional.

### Custom Graphical Monitor

The Custom Graphical Monitor provides graphical data monitoring for your projects. In the Custom Graphical Monitor, you can place graphical buttons, sliders, gauges, charts, text, and imported images.

For more information about using this feature, see [Custom Graphical Monitor](#) on [page 92](#).

### Editing project databases using Microsoft Excel

RSLogix 5 Professional allows you to view and edit project databases with Microsoft Excel software. Microsoft Excel 97 (and later versions) comes with an ActiveX control that RSLogix 5 can use. You must have Microsoft Excel installed on the same computer as RSLogix 5 Professional to use this feature.

The Microsoft Excel ActiveX control gives you the powerful editing features of Excel, such as search/replace, and modifying multiple records at the same time. Using this control minimizes or eliminates the need for database import/export operations.

To access the Excel editor, click **Tools > Database > Edit Using Excel**. The Address/Symbol Editor will open using Excel as the editing tool.

Pressing **[F1]** will access the Microsoft Excel Help system.

When the Excel editor is displayed and has focus, RSLogix 5 displays the Excel menus and toolbars. You can also access Excel functions by using the right-mouse button menus while working in the editor.

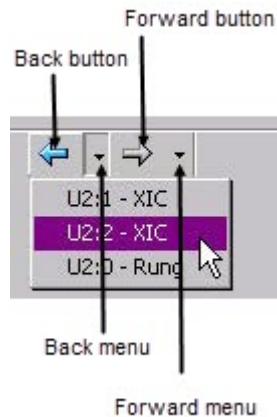
Keep the following information in mind when using Excel to edit the database:

- When you open the Excel editor, the entire contents of the Address/Symbol database is automatically loaded into the control.
- Changes made within the Excel editor will not be applied to the Address/Symbol database until you click **Apply** or **OK**. When you apply changes, the entire Address/Symbol database will be overwritten with the contents of the Excel editor.
- Empty rows within the Excel editor are be ignored when applying the contents to the database.
- If records are added, removed, or moved within the Excel editor, they will be sorted when the contents are applied to the Address/Symbol database.
- When you click **Apply** or **OK**, all legal records will be written to the Address/Symbol database. Illegal records (records containing illegal characters, fields with too many characters, duplicate records, etc.) will not be written to the database.
- Any errors or illegal records encountered when applying the contents of the Excel editor to the database will be logged and displayed in a separate window. You have the option of saving this information to a file.
- If you close the Excel editor without clicking **Apply** or **OK** (by clicking **Cancel**), the editor closes without overwriting the database. Changes made in the editor since the last Update Changes operation will be lost.
- The Excel editor is limited to approximately 64,000 rows per sheet. Databases with more than 50,000 records will have their contents spanned to multiple Excel sheets.
- All standard features of the Excel ActiveX control will be available to manipulate the database. When the Excel editor has focus, these features are accessed through the menus or toolbars or from the right-mouse menu. Remember, you can always get help with the Excel editor by pressing the **[F1]** key.

## Logic Trace

The Logic Trace feature lets you navigate through your ladder logic like using a Web browser. As you move your cursor through a ladder logic project, the Logic Trace feature keeps track of where you have been. You can then use the **Logic Trace** toolbar to navigate back to previous positions, or from earlier positions to later ones.

You can turn the logic trace toolbar on or off by clicking **View > Toolbars** and selecting or deselecting the **Logic Trace** toolbar.



## How logic trace works

As you move your cursor through the ladder logic, the software records the positions of your cursor. When no back or forward history is available, the logic trace arrow buttons are disabled (grayed out).

Actions that create a "back" navigation history include cross reference navigation, program file display change, clicking your mouse on ladder logic rung/instruction elements, searching ladder logic, using the Goto Rung function, using dot commands, etc. Using the keyboard arrow keys will not generate a navigation history.

Actions that create a "forward" navigation history are limited to clicking an enabled "back" toolbar button or selecting a location from the "back" pull down menu.

When you click a "back" button, the cursor will move to the previous location in the navigation history. Once you have moved backward in the navigation history, clicking the "forward" button will move the cursor forward through your navigation history.

The pull down menus are limited to a maximum of 10 entries. Each entry lists a rung/instruction location. While the menus are limited to showing a maximum of 10 entries, the arrows allow you to go much farther back.

If you delete an instruction or rung that is in the history, that item is removed from the logic trace navigation history. If you edit a rung or instruction that is in the navigation history, it remains in the history.



## Getting the information you need

Use this chapter to review the sources of additional information on RSLogix 5 software, including online help, RSLogix 5 training, and technical support.

You can find out more information about RSLogix 5 software by consulting:

- RSLogix 5 online help
- RSLogix 5 training
- Technical support services

### RSLogix 5 online help

RSLogix 5 online help provides overviews, a description of the fields on every dialog box, and step-by-step procedures for working with all of the features of RSLogix 5. To open online help while running RSLogix 5 you can:

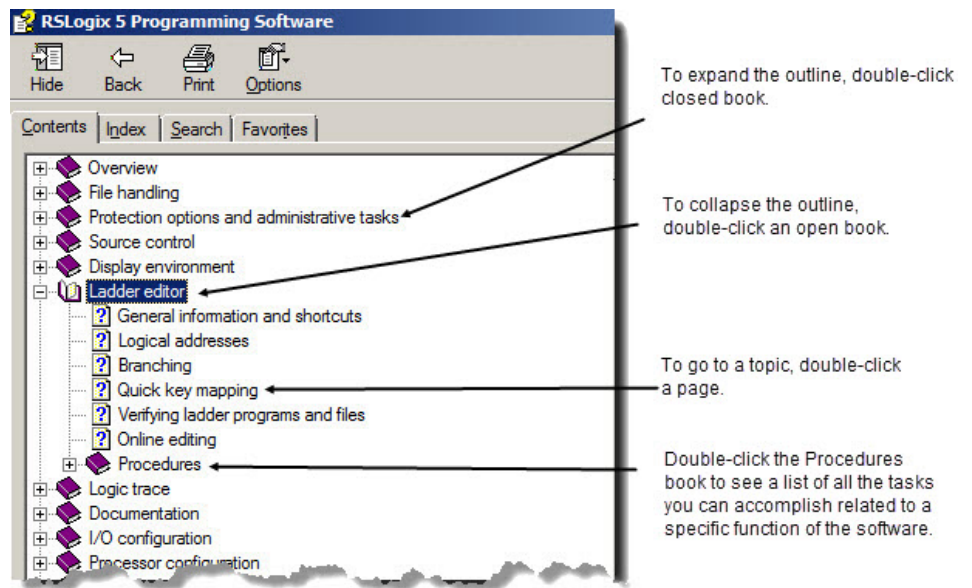
- Click **Help** on any window
- Press [F1] while the cursor is on any instruction, dialog box, or window view
- Select **Help > Contents**
- Expand the **Help** folder in the project tree and then double-click on any informative file listed (except for **User Application Help** which is only available if you have defined it) to launch a help file.

### Using the Contents, Index, and Find tabs

To display the tabbed help dialog box

- Select **Help > Contents** and click the appropriate tab or
- Expand the **Help** folder in the project tree, double-click **Contents**, and click the appropriate tab

### Contents



**Tip:** To print a group of help topics, select a book from the **Contents** tab, and then click **Print**. All of the individual topics in that book will print.

## Index

The index tab provides a list of guide words or subjects just like the index of a book. This is a quick way to find information about a specific topic. Follow the directions on the **Index** tab.

## Find

If you don't see what you are looking for in the contents or index, you can search the entire help file for all occurrences of a word. Follow the directions on the dialog box to find a word.

The first time you click the **Find** tab you will see a message about building a word list. Follow the directions on the screen. The default selection is generally sufficient. For more information, see Microsoft's online help (**Start > Help**).

## Instruction set help

Click any instruction in your project and press **[F1]** for help on that instruction. To pick an instruction from a list instead, select **Help > PLC-5 Instruction Help**. From this topic you can also search for an instruction by category.

Sample instructions are shown in the help with parameters entered so you can more easily determine what information (bit address, constant, etc.) you must supply.

## Keyboard shortcuts

A list of hot keys (keyboard shortcuts) that enable you to maneuver the software without a mouse can be found in a help file that you can print out. To access this file, select **Help > Using The Keyboard**. To print any of the keyboard help topics, just click **Print** at the top of the window.



Some of these keyboard shortcuts (sometimes called Ctrl-key accelerators) are standard to the Windows operating system and work across all Windows based products. Other shortcuts will only work with the RSLogix 5 and 500 products.

## User Application Help

The User Application Help feature allows you to add your own reference source (document, web page, etc.) to the RSLogix 5 project. You can use whatever format you want for the source as long as the computer running RSLogix 5 can open and read that source. For example, you could use a Microsoft Word doc file, provided that you had Word on your computer. Or you could use an HTML file provided that you had a browser that could read the file.

Your User Application Help file is saved with the project in RSLogix 5. You can specify one **User Application Help** file per project.

### To set up your User Application Help file

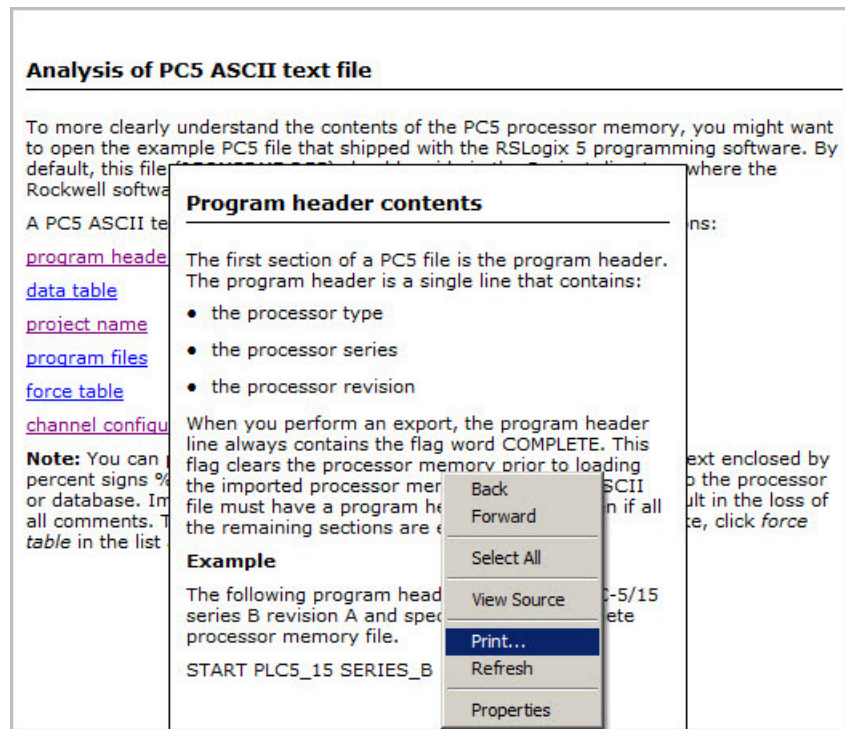
1. Create the source file for your User Application Help.
2. From the project tree in RSLogix 5, right-click **User Application Help** (under the **Help** folder) and select **Properties**. The **User Application Help** dialog box appears.
3. Enter the path and file name, or the URL for your source file and click **OK**.

To specify a different source file, go back to the **Properties** dialog box and enter the new path and name.

To display the **User Application Help** file, double-click on **User Application Help** (under the **Help** folder in the project tree).

## Printing a popup help topic

To print the contents of a popup window, right-click in the popup and select **Print Topic**.



## Learning more about using online help

### RSLogix 5 training

### Classroom training

To learn tips and tricks for getting the most out of the help system, select **Help > Using Help**.

Rockwell Software offers both classroom and computer-based training for RSLogix 5.

One of the best ways to increase your proficiency at using Rockwell Software products is to attend a Rockwell Software training program. Our training programs can help you master the basics and show you how to unleash the full potential of our software.

We offer a wide range of training programs, from regularly scheduled classes conducted at Rockwell Software facilities, to custom-tailored classes conducted at your enterprise. The size of each class is kept small intentionally to maximize student engagement.

For more information about our training programs:

- Visit our web site at [www.software.rockwell.com/Training/](http://www.software.rockwell.com/Training/)
- View the **Support and Training** help file either from **Help** on the menu bar or from the **Help** folder in the project tree.
- Contact the Rockwell Software Training Coordinator at **877-724-7864**.

## Interactive training

A computer-based training program for RSLogix 5 is available for purchase. Contact your distributor to order RSTrainer 2000 for RSLogix 5. A demo of the training program is included on the RSLogix 5 CD-ROM. To run the demo, insert the RSLogix 5 CD-ROM into the CD-ROM drive. When the menu appears, select **Try RSTrainer 2000 for RSLogix 5**.

If the CD-ROM does not autorun, open the **Start** menu and select **Run**. Type `x:\autoplay` (where x is your CD-ROM drive), and click **OK**. Select **Try RSTrainer 2000 for RSLogix 5** from the menu.

## Technical support services

If you cannot find answers to your questions in the *Getting Results with RSLogix 5* publication or in the online help, you can call Rockwell Software technical support.

Telephone—440-646-7800

Fax—440-646-7801

World Wide Web—[www.software.rockwell.com/support](http://www.software.rockwell.com/support)

Support staff are available Monday to Friday 8 AM to 5 PM EST, CST, MST, and PST, except during U.S. holidays.

## When you call

When you call, you should be at the computer running the Rockwell Software product and be prepared to provide the following information:

- Product serial number on the Activation disk labels (You can find the serial number online. On the **RSLogix 5** menu, click **Help**, and then click **About**.)
- Product version number
- Hardware you are using
- Microsoft Windows operating system and service pack you are using
- Exact wording of any messages that appear on the screen
- Description of what happened, and what you were doing when the problem occurred
- Description of how you tried to solve the problem.



# EVMOVE Activation

RSLogix 5 software currently supports both the EVMOVE activation and FactoryTalk Activation systems for activating software. New installations of RSLogix 5 software must use the FactoryTalk Activation system. Older installations of RSLogix 5 that have used the EVMOVE activation system may continue to do so.

Rockwell Software advises all RSLogix 5 users to upgrade their activation system to avoid problems with future releases of RSLogix 5.

This appendix applies only to the EVMOVE activation system.

Rockwell Software's products are copy-protected. Only a computer with access to the activation key can run the software. The key is located in an activation file, which is originally located on the Master disk supplied with the RSLogix 5 product. The activation file contains one activation key per product. Each key contains one or more licenses depending on how many copies of the product you have purchased.

**Tip:** Store your Master disk in a safe place. If your activation becomes damaged, the Master disk may be the only means to run your software in an emergency.

During the setup process, the setup program gives you the opportunity to move the activation file from the Master disk to the root folder of the drive on which you're installing the software.

When you launch RSLogix 5, the software first checks your local hard drives, then network hard drives, and finally local floppy drives for activation. If the system fails to detect either the activation file or the Master disk, you will receive an error message stating that activation is required to run the RSLogix 5 software.

**Tip:** Systems attached to extensive networks can take quite a while to search for activation files on all available drives. You can use the CHECKDRIVES environment variable to specify and/or limit the drives your software checks for activation files and to specify the order in which they are checked. Refer to the activation utilities online help file by selecting **Help > Copy Protection**.

## Protecting your activation files

To avoid damaging your activation files, do not perform the following operations with activation files on the hard drive.

- Restore from backup
- Upgrade the operating system
- Compress or uncompress the hard drive

Defragmentation utilities will not harm activation files.

---

**Important:** Certain anti-virus software packages, such as Norton Anti-virus, can corrupt the activation files. Configure your anti-virus software to avoid checking the files EVRSI.SYS and 386SWAP.PAR.

---

Before running any type of utility that may modify the structure or organization of the hard drive, remove activation from the hard drive:

1. Use the Move Activation utility (EvMove) to move activation files from the hard drive to an activation disk.

---

**Important:** Do not use the Move Activation utility if Rockwell Software products are currently running. Ensure all software programs are closed before initiating the EvMove utility.

---

Run EVMOVE.EXE from your hard drive (located in C:\Program Files\Rockwell Software\RSUtil if you accepted the default folder location during installation).

2. Perform the hard disk operation.
3. Move the activation files back to the hard drive.

---

**Important:** You must use the move utility, EvMove, to move activation files. Attempts to copy, move or e-mail an activation file by other means will damage the file.

---

## Activating RSLogix 5

Depending on your needs, you can activate RSLogix 5 from any of the following:

**Hard drive.** The activation key resides on your computer's hard disk. Use this method if you will typically use RSLogix 5 on only one computer. This is the default method if you activate RSLogix 5 during installation. To run RSLogix 5 on a different computer, move the activation key back to the Master disk, and then to the hard drive of the new computer.

**Diskette drive.** The activation key resides on a floppy disk (activation disk). Use this method if you will typically use RSLogix 5 on more than one computer, for

example, if you want to run RSLogix 5 on a desktop computer at some times and a portable computer at others.

**Network drive.** The activation keys reside on a network drive. Use this method if you have purchased multiple licenses of the software and want several users to be able to activate the software over a network. Refer to the online help for instructions on moving activation to a network drive (refer to the "Finding more information about activation" section in this chapter to access online help).

## Running the activation utilities

The utilities for moving and resetting activation are called EvMove and Reset respectively. Reset is used when an activation file has been damaged. The EVMOVE.EXE and RESET.EXE files are located on your hard drive (located in C:\Program Files\Rockwell Software\RSUtil if you accepted the default folder location during installation). To run these programs, select **Start > Programs > Rockwell Software > Utilities > Move Activation** or **Reset Activation**.

## Finding more information about activation

The online help (COPYPROT.HLP) provides more extensive information on activation including subjects such as:

- **KEYDISK.** Set this environment variable to tell your computer to look for activation on floppy drives.
- **CHECKDRIVES.** Specify which drives to search for activation.
- **Network activation.** Move activation to a network server to allow multiple users access to the activation.
- **Moving activation.** See detailed instructions for moving activation.
- **Resetting activation.** See detailed instructions for using the Reset utility to repair a damaged activation file.
- **Troubleshooting.** Look up error messages, get problem-solving suggestions.

You can access online help:

- From **Help** on one of the **EvMove** or **Reset** dialog boxes.
- From RSLogix 5 by selecting **Help > Copy Protection** from the main menu.
- Without running either RSLogix 5 or the activation utilities. From the **Windows Start** menu, select **Programs > Rockwell Software > Utilities > Activation Help** (if you accepted the default folder location during installation).

## Some common questions

Following are some common problems that people encounter with activation and their solutions.

**My activation files were damaged. What should I do?**

If you have lost the activation because the activation file is damaged, you need to reset activation. Follow the **Reset Codes** instructions on the Rockwell Software Technical Support web page, or call the technical support telephone number. The web page and telephone number are both listed on the inside front cover of this guide.

If you cannot obtain a reset code immediately, follow these instructions to use the Master disk to activate the software as a temporary solution.

**To use the Master disk to activate software**

1. Set the KEYDISK environment variable to TRUE. (Please refer to the online help.)
2. Insert your Master disk in the floppy drive.
3. Run your software as usual. Your software will find the activation on the Master disk.

**I accidentally deleted the software folder on my hard drive. Do I need to call Rockwell Software for replacement activation files?**

No. Deleting the program files does not delete your activation. The activation files are not stored in the program folder; they are located in the root folder. Your activation files will not be lost unless you format the hard drive, tamper with hidden files in the root folder, or perform certain other hard drive operations (For more information, see "Protecting your activation files" section in this chapter).

To get the software running again, simply reinstall the software, but do not move the activation when given the opportunity.

**Why can't I move activation to a new floppy disk on a Windows NT system?**

It has to do with a disk modification that NT does not allow. If you have access to a Windows 98 machine, you can create a disk that will work under NT. Format a floppy and move any activation file to it under Windows 98. (You can move the activation back off the disk if you want to keep it where it was.) Then take that disk to your Windows NT machine and move the activation to it.



**6**

- 6200 Series software
  - import database 72
  - opening project in RSLogix 5 63
  - problems importing to RSLogix 5 64

**A**

- A.I. Series software
  - dot commands 82
  - import database 71
  - opening project in RSLogix 5 63
- accept rung edits 86
- actions 36
- activation 16, 119
  - concurrent 20
  - damaged 122
  - EVMOVE 16, 19
  - FactoryTalk Activation 16
  - FactoryTalk Activation Client 19
  - file 119
  - key 119
  - moving 122
  - network 121
  - node-locked 20
  - resetting 121
  - troubleshooting 121
  - utilities 121
- activation file
  - definition 11
- addressing methods 83
- anti-virus software 120
- archive
  - definition 11
- ASCII database files 74, 76
  - importing 73
- ASCII editing 81
- assemble edits 86
- auto-backup 79
- AutoSave 80

**B**

- back up 79
  - definition 11

- backup files 79
- branching 84
  - add a branch 84
  - copy branch leg 84
  - copy entire branch structure 84
  - delete branches 84
  - expand a branch left or right 84
  - move a branch 84
  - nested branches 84
  - parallel branches 84

**C**

- calling Rockwell Software 117
- cancel rung edits 86
- CDM 93
- channel configuration 57
- chassis
  - adding 67
  - changing 65
- chassis configuration 53
- chassis table 65
- CHECKDRIVES 119, 121
- close a program file 47
- collisions in database import 71
- communication channels 57
- communications
  - configuring 51
  - system 51
- communications driver 48
  - configuring 48
- compressing the hard drive 120
- concurrent activation 20
- configure
  - adapter 66
  - analog I/O 69
  - chassis 65
  - chassis and I/O 53
  - communication channels 57
  - discrete I/O 69
  - MCP 88
  - PII 88
  - processor 66
  - STI 88
  - system communications 51
- controller communications 58

ControlNet 53  
copy protection, see activation 16, 119  
crash recovery 80  
create  
    data table file 54  
    new project 52  
    program file 54  
CSV files  
    importing 73  
CTD files 72  
custom data monitor 93  
custom graphical monitor 94, 109

## D

d in rung margin 85  
D in rung margin 86  
data monitoring methods 91  
data table files  
    creating 54  
    monitoring 58  
database  
    adding documentation 56  
    exporting 74  
    import from A.I. 63  
    importing 71  
database editor  
    accessing 56  
    defined 56  
defragmentation utilities 120  
delete  
    branch 84  
deleting the software folder 122  
disk space required 15  
document conventions 11  
documentation database  
    editing with Excel 109  
documentation, see database 56  
dot commands 82  
download 58  
    definition 11  
drag and drop 83  
driver 48  
    configuring 48  
DSC files 71

## E

e in rung margin 85  
EAS file format 75  
editing  
    database with Excel 109  
editing while online 86  
EIC file format 75  
entering ladder logic 54  
ERP file format 75  
error messages 119  
ESG file format 76  
EvMove 120  
EVMOVE activation 16, 19  
Excel  
    using to edit project databases 109  
exporting  
    database files 74  
    PCS libraries 99

## F

FactoryTalk Activation 16  
FactoryTalk Activation Client 19  
FactoryTalk Activation Tool 19  
FactoryTalk Activation Wizard 19  
FactoryTalk Administration Console 18  
FactoryTalk Directory Configuration Wizard 18  
FactoryTalk Local Directory 18  
FactoryTalk Network Directory 18  
FactoryTalk ServicesPlatform 18  
features of RSLogix 5 45  
files  
    CSV 73  
    CTD 72  
    data table monitoring 58  
    DSC 71  
    EAS 73  
    EIC 73  
    ERP 73  
    ESG 73  
    new data table file 54  
    new program file 54  
    new project 52  
    OP\$ 72  
    OP\$ files 64  
    open A.I. or 6200 63

- open multiple programs 47
- open project 53
- opening 6200 files 64
- RPD 71

find 59

forces, monitoring 92

## G

- glossary 11
- go online 58
- go to rung 83

## H

- hardware configuration 65
- hardware requirements 15
- help
  - adding your own help document 115
  - online 11, 113
  - see also online help 113
- histograms 95
  - difference from trends 91
- hot keys 83, 114

## I

- i in rung margin 85
- l in rung margin 86
- I/O configuration 53
- I/O modules
  - adding 67
- importing
  - A.I. and 6200 Series files 63
  - A.I. database 63
  - database files 71
  - PC5 libraries 100
- installing
  - RSLinx Classic Lite 17
  - RSLogix 500 17
  - Security Server Client 20
- instruction toolbar 45
- instructions
  - help using 114
  - quick entry 80

## K

- keyboard shortcuts 83, 114
- KEYDISK 121

## L

- ladder editor 54
- ladder logic program 54
- ladder view 45
- laptop considerations 58
- letters in left margin 85
- libraries 99
- libraries, definition 11
- lists of bit and word addresses 93
- local directory 18
- logic trace 110

## M

- main control programs 88
- master disk 119
- MCP 88
- menu bar 45
- mnemonic, definition 11
- monitoring data 58, 109
  - cross reference 92
  - custom data monitor 93
  - custom graphical monitor 94
  - forces 92
  - histograms 95
  - recipe monitor 94
  - trends 96
- moving
  - activation 122
  - addresses 83
  - instructions 83

## N

- network
  - activation 121
- network directory 18
- node-locked activation 20

**O**

- online bar 45
- online editing 85
  - example 86
  - restrictions 87
  - zone markers 85
- online help 113
  - contents 113
  - find 113
  - index 113
  - instruction set 114
  - print popup 115
  - print several topics 113
- Online Now 61
- OP\$ files 72
- open
  - existing projects 53
  - more than one project 48
  - program files 47

**P**

- partial download 58
- PC5 libraries
  - annotating 108
  - channel config portion of ASCII file 107
  - data table portion of ASCII file 106
  - editing ASCII text file 106
  - exporting 99
  - force table portion of ASCII file 107
  - importing 100
  - program files portion of ASCII file 107
  - program header portion of ASCII file 106
  - project name portion of ASCII file 106
  - rules about libraries 99
  - sample ASCII file 101
- PII( processor input interrupt) 88
- policies 34
- printing a report 60
- processor input interrupt 88
- program files
  - creating 54
  - open multiple 47
- project tree
  - about 45
- projects

- creating new 52
- definition 11
- open A.I. or 6200 file 63
- open existing 53

**Q**

- quick key mapping 80
- quick start steps
  - for development 48
  - for maintenance 61

**R**

- r in rung margin 85
- R in rung margin 86
- recipe monitor 94
- recover after power loss 80
- replace 59
- reports
  - preview 60
  - printing 60
- resetting activation 121
- restoring from backup 120
- results window 45, 56
- RPD files 71
- RSAssetSecurity 17, 18
  - importing database from Security Server 30
- RSLinux Classic
  - configuring driver in 48
  - version required 15
- RSLinux Classic Lite
  - installing 17
- RSWho 48
- rungs
  - copy and paste 83
  - go to 83
  - selecting multiple 83

**S**

- search 59
- secured actions 36
- security policies 34
- Security Server
  - importing database into RSAssetSecurity 30
- Security Server Client

- installing 20
- selectable timed interrupt 88
- sequential function charts 89
- SFC editor 89
- shortcuts 83
  - ASCII editing 81
  - dot commands 82
  - keyboard 83
  - quick key mapping 80
- software requirements 15
- standard toolbar 45
- start rung edits 86
- status bar 45
- STI(selectable timed interrupt) 88
- structured text 89
- system communications
  - configuring 51

## T

- technical support services 117
- terms 11
- test edits 86
- timing chart 95
- toolbars
  - add-in 45
  - instruction 45
  - logic trace 110
  - main 45
  - menu bar 45
  - online bar 45
  - standard 45
- tracing logic 110
- training 116
  - classroom 116
  - computer-based 116
- trends 96
  - difference from histograms 91
- troubleshooting 43
  - activation 121

## U

- uncompressing the hard drive 120
- undo 84
- upgrading the operating system 120
- upload, definition 11

- user application help 115

## V

- VBA 109
- verification, definition 11
- verify program logic 56
- Visual Basic for Applications support 109

## W

- Windows
  - 98 122
  - NT 122

## X

- x-ref 92

## Z

- zone markers 85
- zone, definition 11

# Rockwell Automation support

Use the following resources to access support information.

<b>Technical Support Center</b>	Knowledgebase Articles, How-to Videos, FAQs, Chat, User Forums, and Product Notification Updates	<a href="https://rockwellautomation.custhelp.com">https://rockwellautomation.custhelp.com</a>
<b>Local Technical Support Phone Numbers</b>	Locate the phone number for your country.	<a href="http://www.rockwellautomation.com/global/support/get-support-now.page">http://www.rockwellautomation.com/global/support/get-support-now.page</a>
<b>Direct Dial Codes</b>	Find the Direct Dial Code for your product. Use the code to route your call directly to a technical support engineer.	<a href="http://www.rockwellautomation.com/global/support/direct-dial.page">http://www.rockwellautomation.com/global/support/direct-dial.page</a>
<b>Literature Library</b>	Installation Instructions, Manuals, Brochures, and Technical Data.	<a href="http://www.rockwellautomation.com/global/literature-library/overview.page">http://www.rockwellautomation.com/global/literature-library/overview.page</a>
<b>Product Compatibility and Download Center (PCDC)</b>	Get help determining how products interact, check features and capabilities, and find associated firmware.	<a href="http://www.rockwellautomation.com/global/support/pcdc.page">http://www.rockwellautomation.com/global/support/pcdc.page</a>

## Documentation feedback

Your comments will help us serve your documentation needs better. If you have any suggestions on how to improve this document, complete the How Are We Doing? form at [http://literature.rockwellautomation.com/idc/groups/literature/documents/du/ra-du002\\_-en-e.pdf](http://literature.rockwellautomation.com/idc/groups/literature/documents/du/ra-du002_-en-e.pdf).

Rockwell Automation maintains current product environmental information on its website at <http://www.rockwellautomation.com/rockwellautomation/about-us/sustainability-ethics/product-environmental-compliance.page>.

Allen-Bradley, Rockwell Automation, and Rockwell Software are trademarks of Rockwell Automation, Inc.

Trademarks not belonging to Rockwell Automation are property of their respective companies.

Rockwell Otomasyon Ticaret A.Ş., Kar Plaza İş Merkezi E Blok Kat:6 34752 İçerenköy, İstanbul, Tel: +90 (216) 5698400

**[www.rockwellautomation.com](http://www.rockwellautomation.com)**

### Power, Control and Information Solutions Headquarters

Americas: Rockwell Automation, 1201 South Second Street, Milwaukee, WI 53204-2496 USA, Tel: (1) 414.382.2000, Fax: (1) 414.382.4444

Europe/Middle East/Africa: Rockwell Automation NV, Pegasus Park, De Kleetlaan 12a, 1831 Diegem, Belgium, Tel: (32) 2 663 0600, Fax: (32) 2 663 0640

Asia Pacific: Rockwell Automation, Level 14, Core F, Cyberport 3, 100 Cyberport Road, Hong Kong, Tel: (852) 2887 4788, Fax: (852) 2508 1846