



## LACIE IMAKEY: USER MANUAL



[CLICK HERE](#)

to access **up-to-date online version** of this document for the most recent content as well as for features such as expandable illustrations, easier navigation, and search capability.



# INTRODUCTION

Thank you for purchasing a LaCie Key. Your USB 2.0 Key is designed with both practicality and fun in mind. Featuring a generous storage capacity in a small package, you can easily carry your data to and from any computer. Additionally, LaCie Keys are shaped like standard keys, making them small enough for your pocket or your keychain. No matter where you go, your LaCie Key is always ready to exchange files. The LaCie Key is:

- Easy to use - Plug & Play
- Compatible with all modern computers - Hi-Speed USB 2.0
- Secure, with AES 256 encryption - Protect all or part of your data using LaCie Private-Public (Advanced Encryption Standard 256)
- Compact - fits on any keychain
- Water- and scratch-resistant - Gold SIP technology connector

## LACIE IAMAKEY



*iamaKey*

This User Manual will guide you through the easy installation of your LaCie Key. You can also follow the simple steps to creating a secure, password-protected volume.

If you encounter problems, please confirm that all the installation steps have been followed and consult [Getting Help](#).

## PACKAGE CONTENTS

The LaCie iamaKey includes:

- The User Manual
- LaCie Private-Public encryption application
- Wuala Online.url (Internet link to Wuala Secure Online Storage)

**Important Info:** Please save your packaging. In the event that the Key should need to be repaired or serviced, it must be returned in its original packaging.

## MINIMUM SYSTEM REQUIREMENTS

- Computer with a USB 2.0 port
- Windows: Latest version of Windows XP, Vista, or 7
- Mac: Latest version of OS X 10.5 or 10.6 (Mac Intel only for LaCie Private-Public software)
- Minimum free disk space: 600MB recommended
- High-speed Internet for online storage

**Technical note:** Since LaCie USB 2.0 Keys are USB 2.0 portable storage devices, transfer rates will be affected by the USB interface on your computer. You can plug the a USB 2.0 Key into a USB 3.0 port but transfer rates are limited to USB 2.0 speeds. You can also plug a USB 2.0 Key into a USB 1.1 port. Please note that transfer rates will be limited to USB 1.1 speeds.

# INTERFACE

## HI-SPEED USB 2.0 INTERFACE

Since its release in 2000, USB 2.0 has provided the necessary bandwidth to support electronic and computer peripheral devices, including hard drives, CD/DVD drives, and digital cameras. Data transfer rates can reach up to 480 Megabits per second (Mb/s).

The USB 2.0 standard requires native USB 2.0 cables and connectors to achieve Hi-Speed transfer rates.



*USB 2.0 Key, Flash Drive,  
or Cable Interface End*

## PLUGGING A USB 2.0 DEVICE INTO USB 3.0 OR USB 1.1 INTERFACES

Your LaCie USB 2.0 Key is meant for use with a USB 2.0 interface. However, USB 2.0 keys are also compatible with other USB serial interfaces:

**USB 3.0 Port.** You may plug a USB 2.0 device into a USB 3.0 port to access or copy data. However, file transfer rates will not exceed USB 2.0 speeds.

**USB 1.1 Port.** You may plug a USB 2.0 device into a USB 1.1 port to access or copy data. However, file transfer rates are limited to USB 1.1 speeds (up to 12 Mb/s).

# CONNECTING YOUR LACIE IMAKEY TO A COMPUTER

LaCie USB 2.0 Keys are easy plug & play storage devices. Locate the USB 2.0 port on your computer and attach the LaCie iamaKey. Your operating system should recognize the Key's LA-PUBLIC partition immediately.

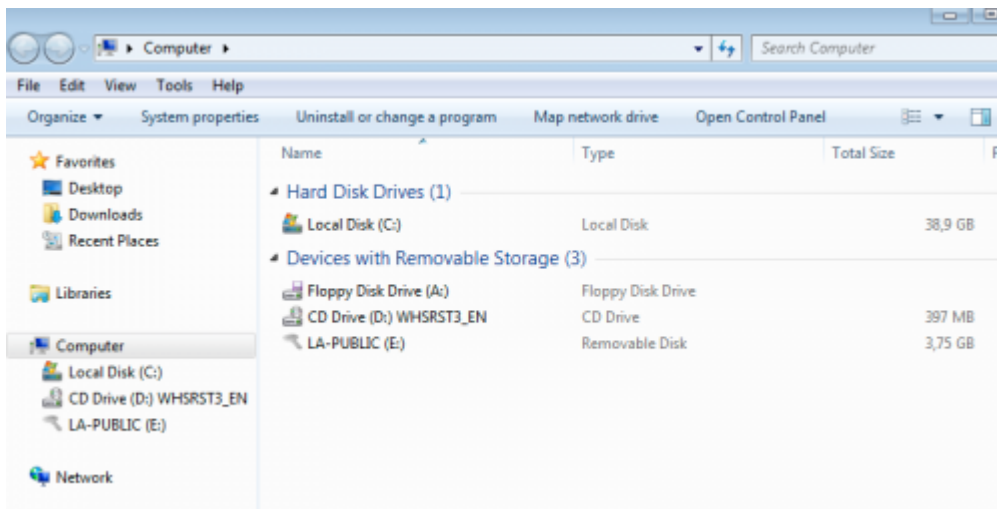


## *iamaKey USB 2.0 Connection*

By default, the LaCie Key is formatted as one full partition. You will have the option to format a second, password-protected volume called "LA-PRIVATE". The LA-PRIVATE volume will include AES 256 encryption. See [Creating and Using the Secure LA-PRIVATE Volume](#) for further details.

## WINDOWS USERS

The LA-PUBLIC partition will appear in My Computer (Windows XP)/Computer (Windows Vista/7). To begin saving data to the LaCie Key, you may copy and paste or drag and drop files to LA-PUBLIC.



## MAC

The LA-PUBLIC partition should appear on the desktop. To begin saving data to the LaCie Key, you may copy and paste or drag and drop files to LA-PUBLIC.



**Important Info:** Your LaCie USB 2.0 Key is shipped as one partition called LA-PUBLIC. Using the LaCie Private-Public encryption application, you may create an encrypted volume called LA-PRIVATE. The LA-PRIVATE volume is password-protected. You may also choose to partition the LA-PUBLIC further to make space for individual users or for organization. See the section on formatting drives for further information on using your operating system's disk utility with the LaCie Key.

## UNMOUNTING THE LACIE KEY SAFELY

When you wish to remove the LaCie Key from a computer, please do so according to the requirements of your operating system. Both Windows and Mac offer simple methods of ejecting storage peripherals without the risk of losing data or interrupting the system operation. See [Unmounting the LaCie Key](#) for further information.

# UNMOUNTING THE LACIE KEY

USB, FireWire, and eSATA external devices feature “plug & play” connectivity, which means that your storage device can be connected and disconnected while the computer is running. To prevent failures, however, it is important to follow these steps when disconnecting your LaCie storage device.

## WINDOWS XP USERS

From the System Tray (located in the lower right-hand side of your screen), click the Eject icon (a small green arrow over a hardware image). A message will appear, listing the devices the Eject icon controls (it should say, “Safely remove...”). Click on the LaCie storage device in this prompt.



This message will appear: “Safe to Remove Hardware” (or similar). It is now safe to disconnect the device.

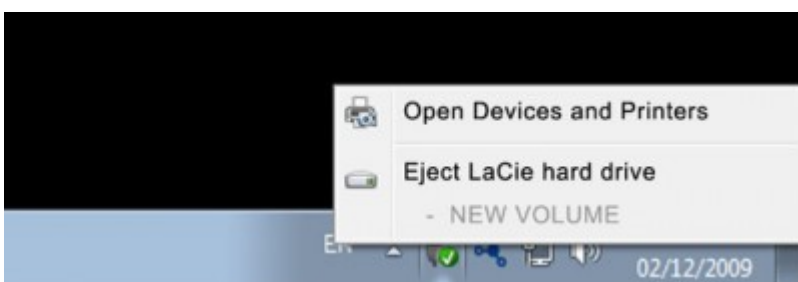
## WINDOWS VISTA & WINDOWS 7 USERS

From the System Tray (located in the lower right-hand side of your screen) click on the plug icon (note the white check mark inside a green circle).



A message will appear, detailing the devices that may be safely unmounted.

Select **Eject** for the device you wish to unmount. A message will appear notifying you that it is safe to remove the device.



## MAC USERS

Drag the storage device icon to the trash. (The icon pictured below is a generic USB device icon. Your storage device may be represented by an icon that looks like the device itself.)



When the icon disappears from the desktop, the storage device can be disconnected.



# CREATING AND USING THE SECURE LA-PRIVATE VOLUME

**Note:** You may have questions following the creation of your secure LA-PRIVATE volume. Please see [LA-PRIVATE Frequently Asked Questions](#) for additional information on using and managing LA-PRIVATE.

Follow the directions below to install and run the included LaCie Private-Public application. LaCie Private-Public allows you to create a password-protected volume on your LaCie disk called LA-PRIVATE. Once created, LA-PRIVATE will use AES 256 encryption to keep your most important files safe.

## MAC USERS - INSTALL MACFUSE BEFORE CREATING LA-PRIVATE

**Note:** Windows users may skip this section.

LaCie Private-Public requires MacFUSE to run on your Macintosh computer. If MacFUSE is already installed on your computer, please make certain that you are running the most recent version.

If MacFUSE is not installed on your computer, LaCie Private-Public will prompt you to install it before creating the encrypted LA-PRIVATE volume.

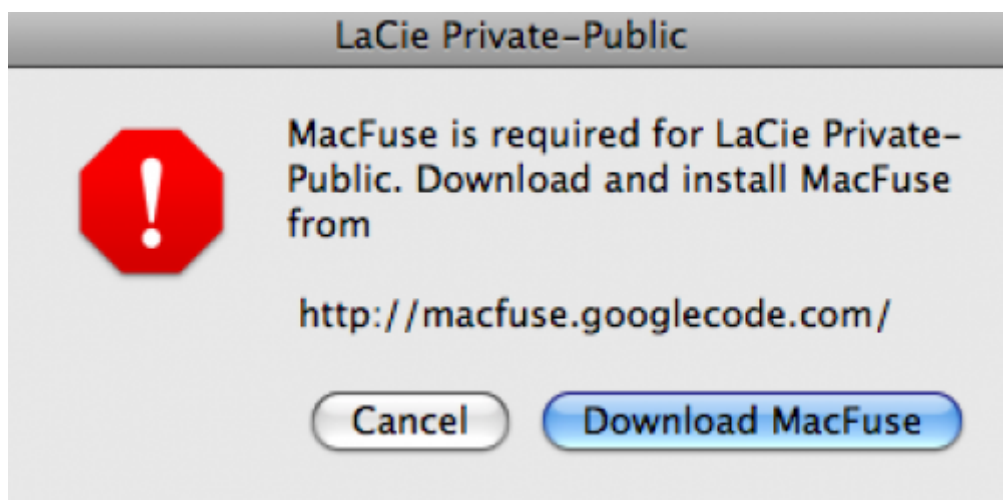
1. Insert the LaCie storage device into the compatible interface port on your computer. The LA-PUBLIC partition will appear on your desktop.



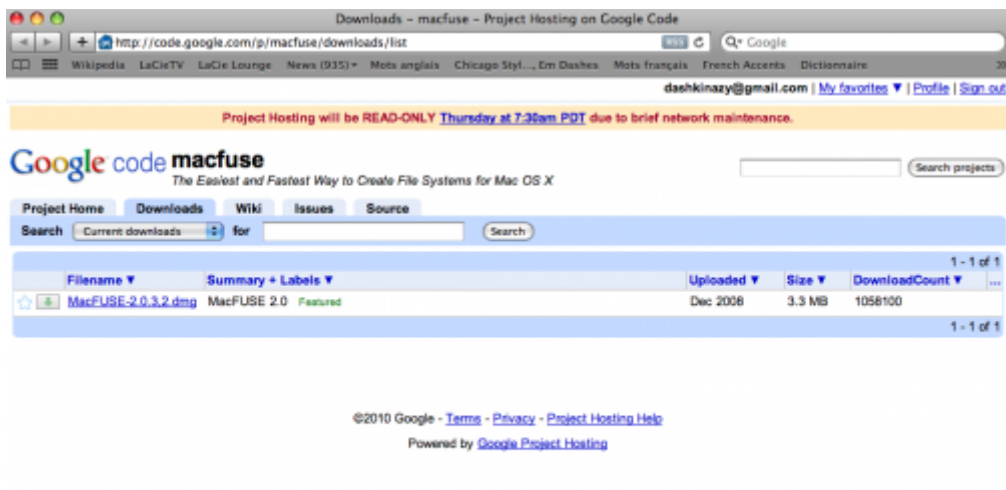
2. Click twice on the LA-PUBLIC icon on the desktop or open it using the Finder.



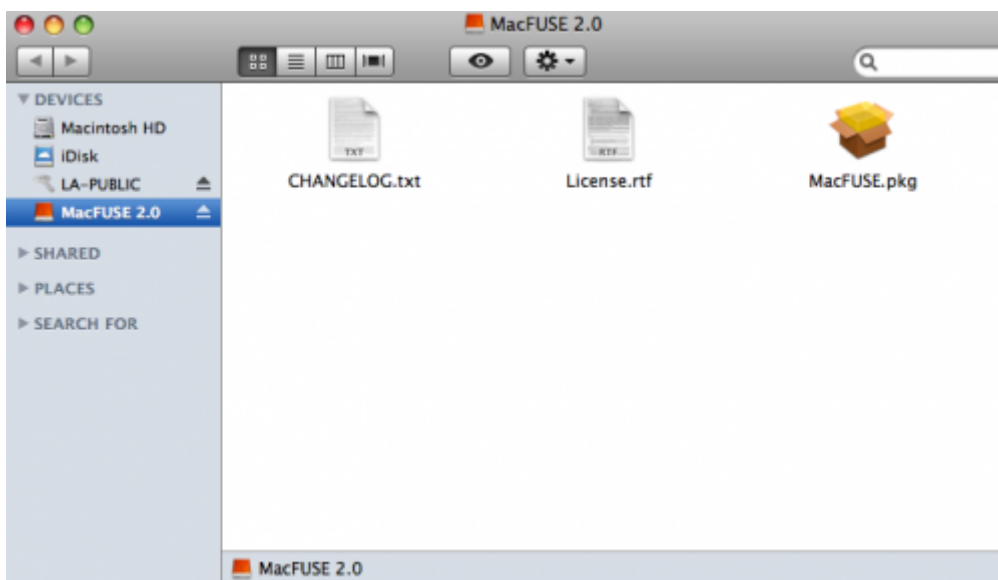
3. If your computer does not have MacFUSE, a window will prompt you to install it. Click **Download MacFuse**



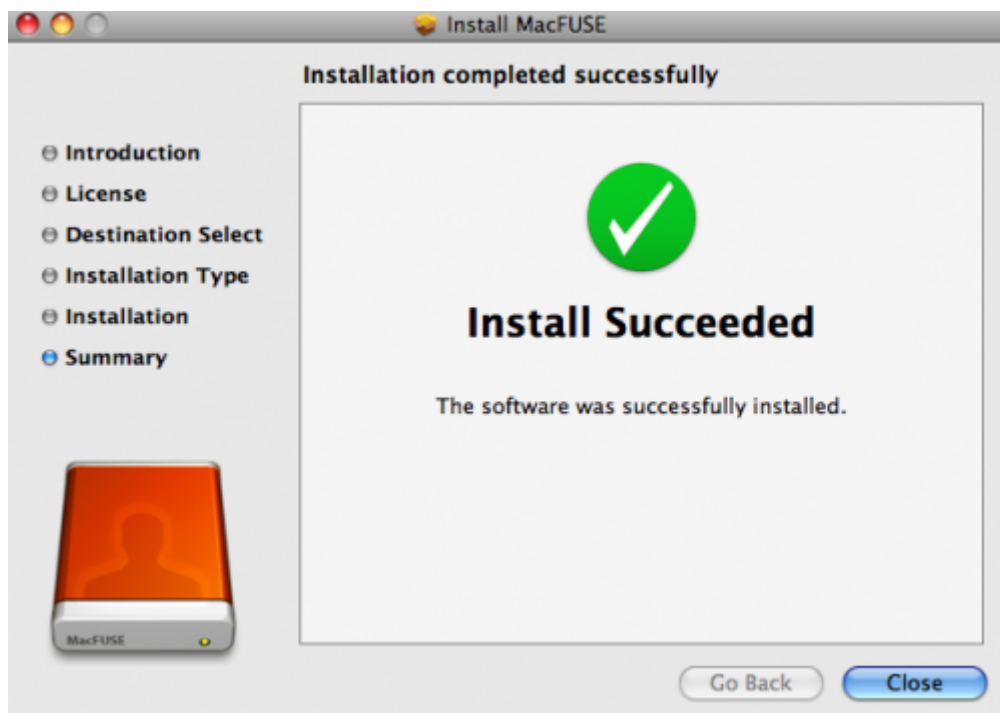
4. Follow the MacFUSE links to download the .dmg file.



5. Once downloaded, click twice on the MacFUSE.pkg file.



6. Follow the MacFUSE installer to completion. LaCie recommends accepting the licensing terms in order to finish the MacFUSE installation. MacFUSE must be installed to create the LA-PRIVATE volume.



7. Go to the next section to create the LA-PRIVATE volume.

# CREATE THE LA-PRIVATE VOLUME

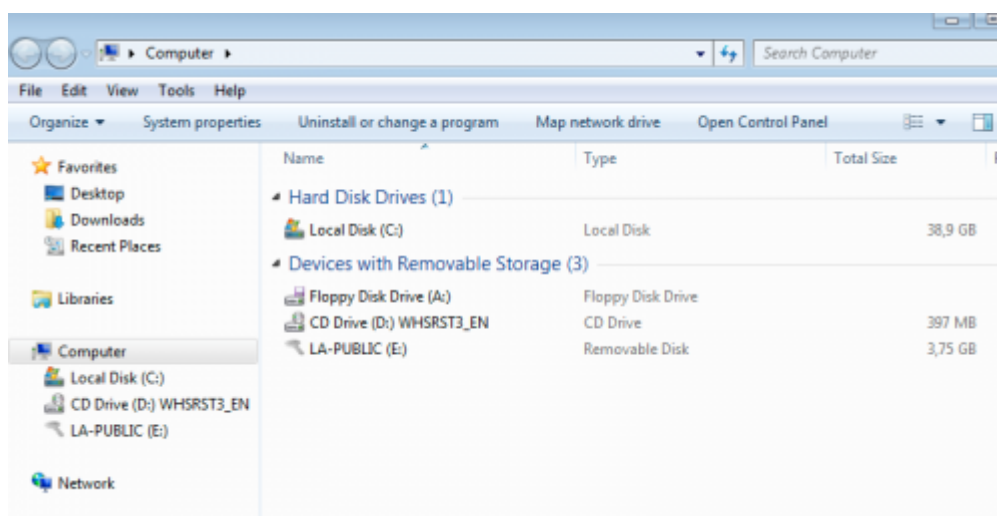
## All users

Please read the following recommendations before creating LA-PRIVATE:

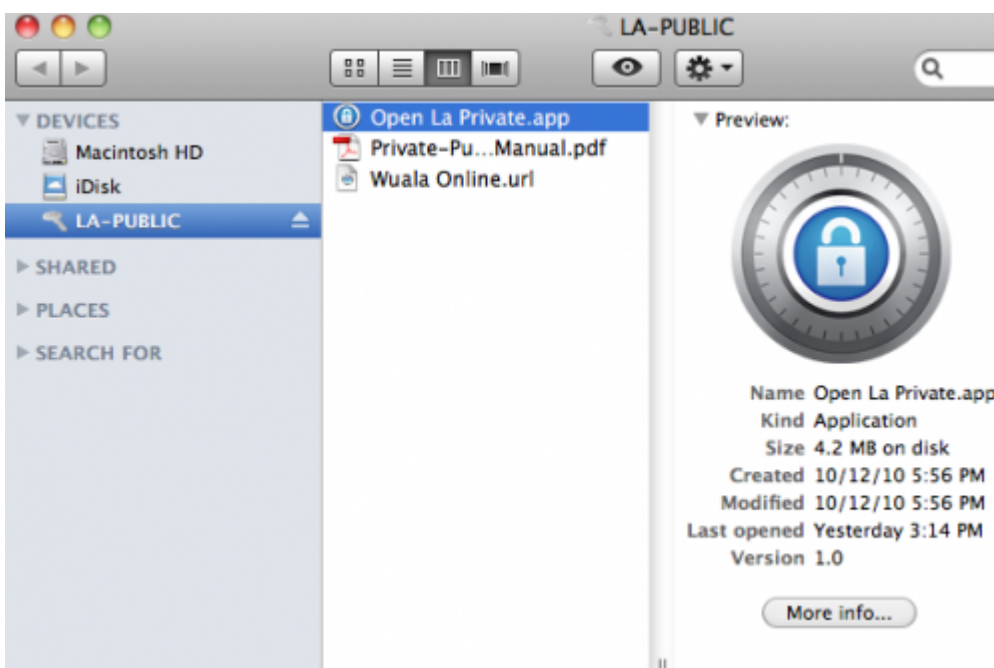
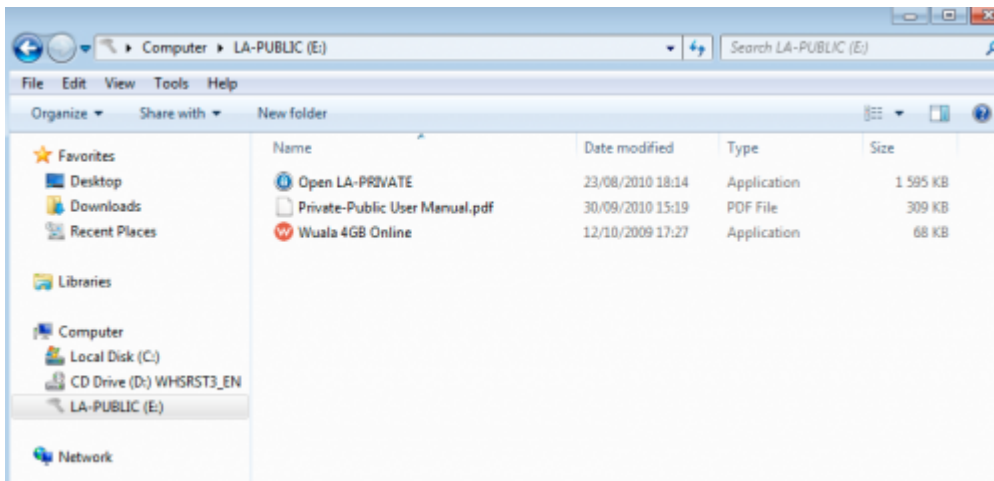
- *Passwords.* You will be prompted to create a password for the LA-PRIVATE volume. Since short passwords are easy to crack, LaCie recommends a minimum of 12 characters. Stronger passwords also include a combination of letters, numbers, and symbols. Accented letters or symbols are not supported. Please consider writing your password on paper and keeping it in a safe place. Data stored on the LA-PRIVATE volume cannot be recovered if the password is lost or forgotten.
- *Time to create LA-PRIVATE.* The estimated time to create the LA-PRIVATE volume is one minute per Gigabyte (GB). For example, 1 GB = 1 minute, 50 GB = 50 minutes, and 500 GB = 8 hours.
- *FAT 32 size limitation.* Due to format limitations, LA-PRIVATE cannot exceed 4 GB if LA-PUBLIC is a FAT 32 volume. To create a LA-PRIVATE volume greater than 4 GB, LA-PUBLIC must be formatted as NTFS (Windows) or HFS+ (Mac).
- *Data stored on LA-PUBLIC.* Consider the size of the LA-PRIVATE volume carefully, especially if you have already stored data on the LA-PUBLIC partition. Creating the LA-PRIVATE volume will not delete media on the LA-PUBLIC partition as long as there is adequate space. For example, you have copied 20 GB of data onto 32 GB of storage. When creating LA-PRIVATE, you can only use the storage that remains (i.e. less than 12 GB).
- *Disable sleep mode on your computer.* In most instances, LaCie Private-Public will pause when your computer goes into sleep mode. To avoid delays, LaCie highly recommends that you disable sleep mode on your computer before launching LaCie Private-Public to create LA-PRIVATE.
- *Do not shut down your computer while LaCie Private-Public is creating LA-PRIVATE.*
- *Administration rights.* You must have administration rights to your computer to access LA-PRIVATE.

Follow the steps below to create LA-PRIVATE:

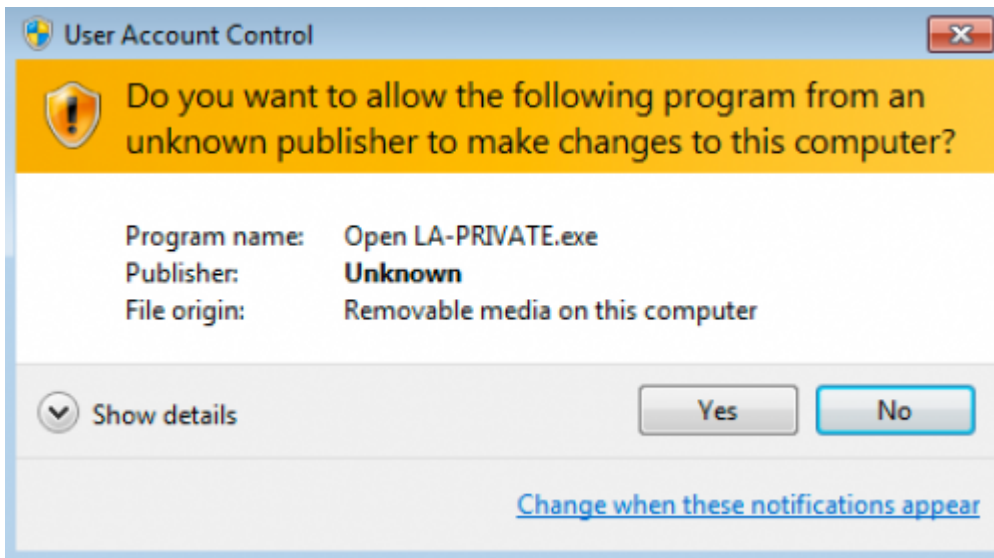
1. Insert the LaCie storage device into the compatible interface port on your computer. The LA-PUBLIC partition will appear in **My Computer/Computer** (Windows) or on your desktop (Mac).



2. Click twice on the LA-PUBLIC icon in **My Computer/Computer** (Windows) or on the desktop (Mac).



3. Click twice on the **LaCie Private-Public** application.
4. **Windows:** You may receive a prompt asking if you wish to run LaCie Private-Public. Please confirm that you would like to continue.



5. The first window will ask you to enter a size for the LA-PRIVATE volume. Please note that you can use the pulldown menu to select the LA-PRIVATE capacity in MB (Megabytes) or GB (Gigabytes). As a guide, 1000 MB = 1 GB. Choosing GB will allow for sizes such as 1 GB, 10 GB, 50 GB, etc. It is not possible to enter 1.5 GB, 10.5 GB or 50.5 GB. Instead, use MB for capacity to select 1500 MB, 10500 MB or 50500 MB. LA-PRIVATE cannot exceed 4 GB if LA-PUBLIC is formatted FAT 32. Please enter the size of the LA-PRIVATE volume.







6. Click **Next>**.
7. Enter and confirm your password. Selecting the check box for **Display password** will allow you to see the characters in the password field.





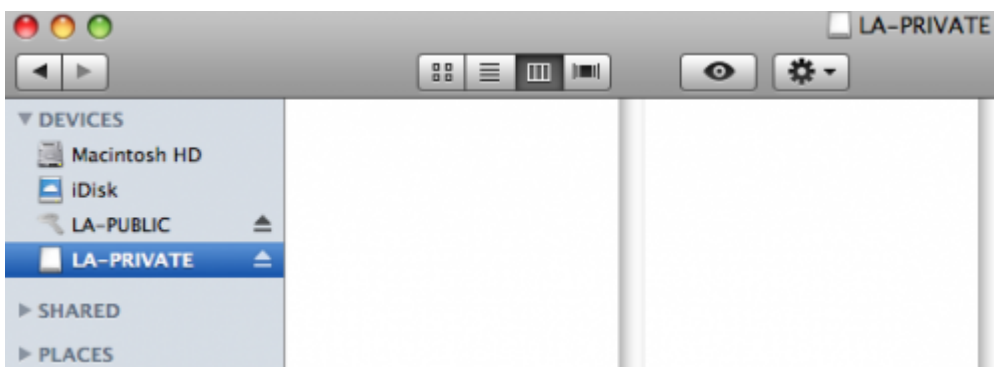
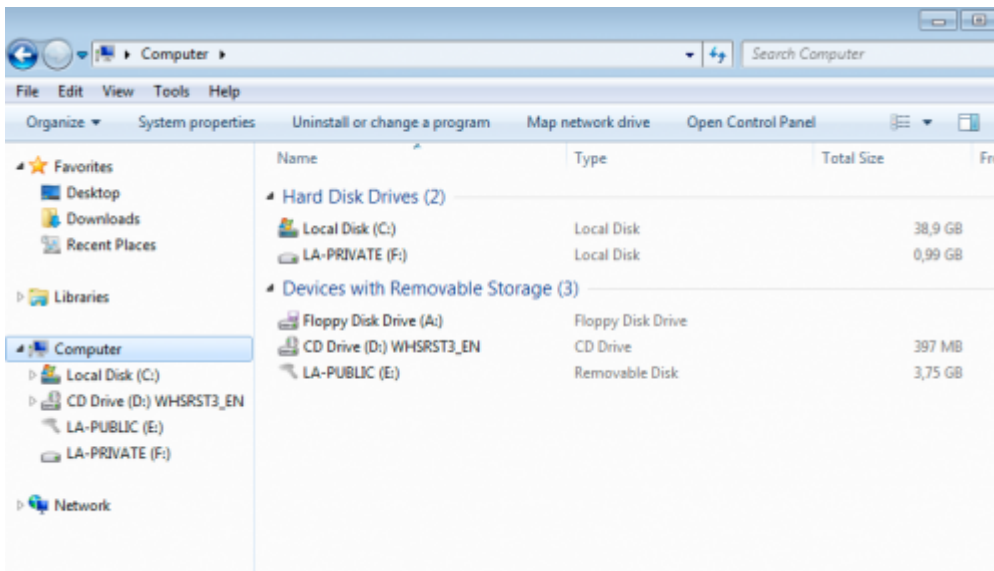
8. Click **Next>**.
9. Click **Format** to create the LA-PRIVATE volume with AES 256 encryption.



10. The format could take a few minutes to many hours. Estimate the time by assuming one minute per one gigabyte. Please do not turn off your computer during the format.



11. Once the format is complete, LA-PRIVATE will mount automatically in **My Computer/Computer** (Windows) or in the Finder (Mac). It is now ready to store your most important data.



## MOUNTING THE LA-PRIVATE VOLUME

LA-PRIVATE may be locked to protect data from being accessed by unauthorized users. Follow the steps below to unlock and mount the LA-PRIVATE volume.

**Important Info:** You must create LA-PRIVATE before attempting to mount the volume.

1. Insert the LaCie storage device into the compatible interface port on your computer. The LA-PUBLIC partition will appear in **My Computer/Computer** (Windows) or on your desktop (Mac).
2. Click twice on the LA-PUBLIC icon in **My Computer/Computer** (Windows) or on the desktop (Mac).
3. Click twice on the **LaCie Private-Public** application.
4. LaCie Private-Public will recognize that you have created a LA-PRIVATE volume. (If you have not created LA-PRIVATE, the application will guide through the process. See the steps above.) Enter your password in the empty field. Please note that your password is case sensitive.

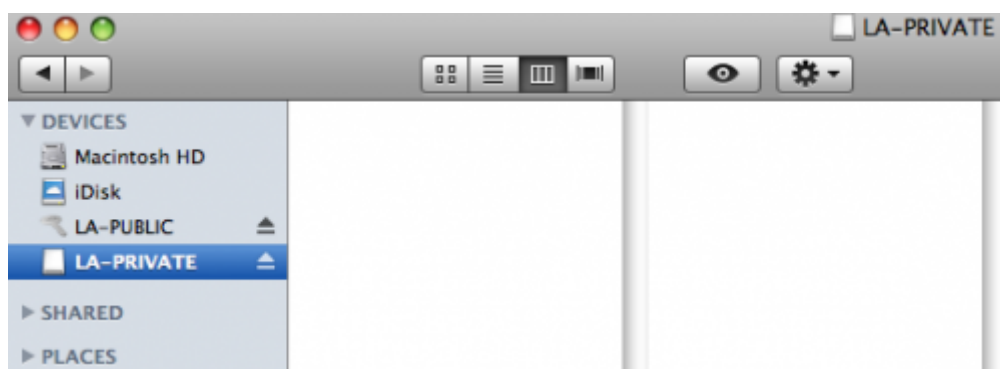
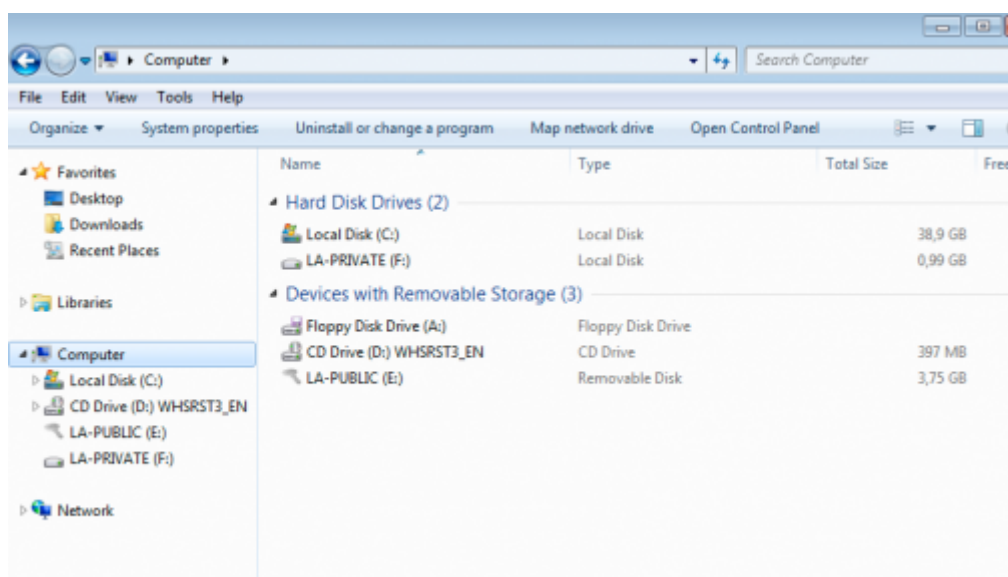


5. To see the characters that you are typing, select the check box for **Display password**. Click **OK**.





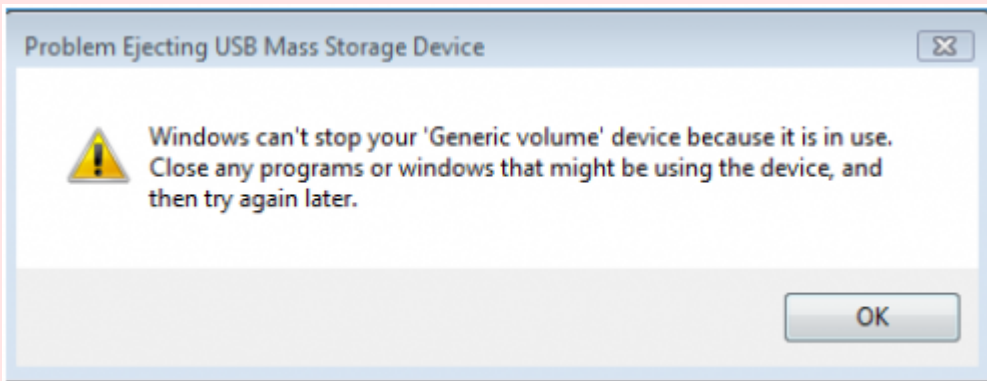
6. The LA-PRIVATE volume will appear in **My Computer/Computer** (Windows) or in the Finder (Mac).



7. Copy and paste, drag and drop, or retrieve existing files from your encrypted LA-PRIVATE volume.

## UNMOUNTING AND LOCKING LA-PRIVATE

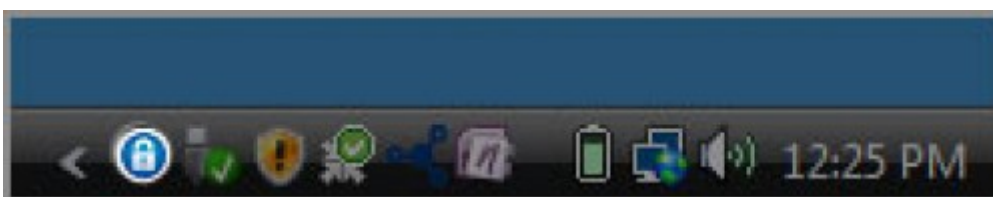
**Important Info:** You may wish to unmount both LA-PRIVATE and LA-PUBLIC at the same time. For your security, LA-PRIVATE must be unmounted before LA-PUBLIC. Your operating system will alert you when attempting to unmount LA-PUBLIC first.



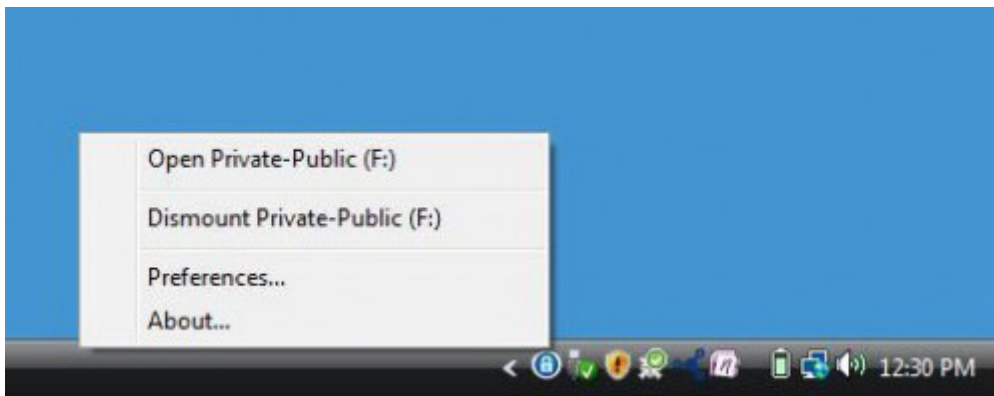
Unmounting LA-PRIVATE will prevent others from accessing your private data. It is a great way to lock LA-PRIVATE since the secure volume will no longer be available for unauthorized use. Follow the steps below to unmount and lock LA-PRIVATE.

### Windows

1. The LaCie Private-Public icon will appear in the System Tray when LA-PRIVATE is mounted. The System Tray is on the lower right side of the computer monitor.



2. Right-click on the LaCie Private-Public icon and select **Dismount Private-Public**.



3. The LA-PRIVATE volume has been unmounted and locked.

## Mac

1. Go to the Dock and search for the LaCie Private-Public icon.



2. Select the LaCie Private-Public icon to choose the application.
3. Go to the pulldown menu **File > Quit**.
4. LA-PRIVATE has been unmounted and locked.

## CHANGING THE LA-PRIVATE PASSWORD

**Important Info:** You must create the LA-PRIVATE volume before attempting to change its password.

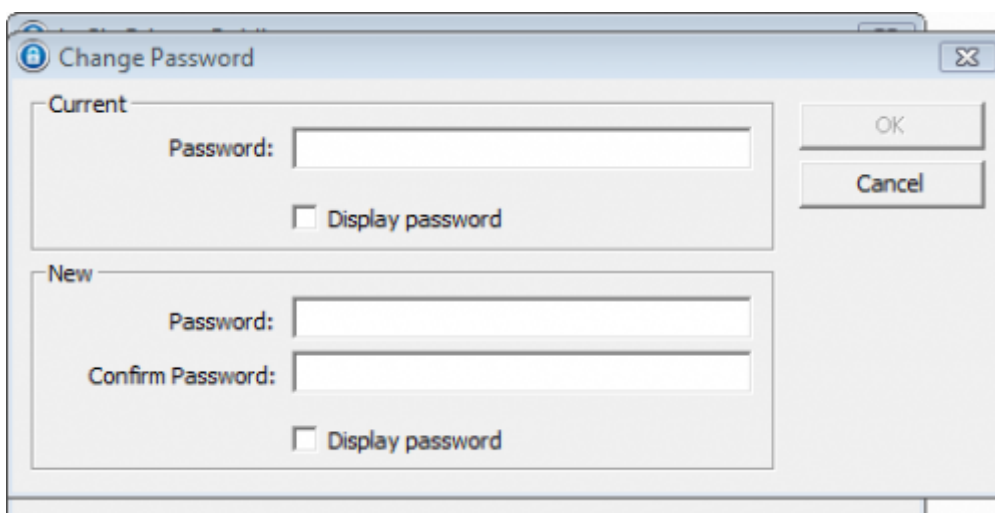
Follow the steps below to change the password to LA-PRIVATE.

1. Insert the LaCie storage device into the compatible interface port on your computer. The LA-PUBLIC partition will appear in **My Computer/Computer** (Windows) or on your desktop (Mac).
2. Click twice on the LA-PUBLIC icon in **My Computer/Computer** (Windows) or on the desktop (Mac).
3. LaCie Private-Public will recognize that you have created a LA-PRIVATE volume and prompt you for the password. (If you have not created LA-PRIVATE, the application will guide through the process. See the steps above.)

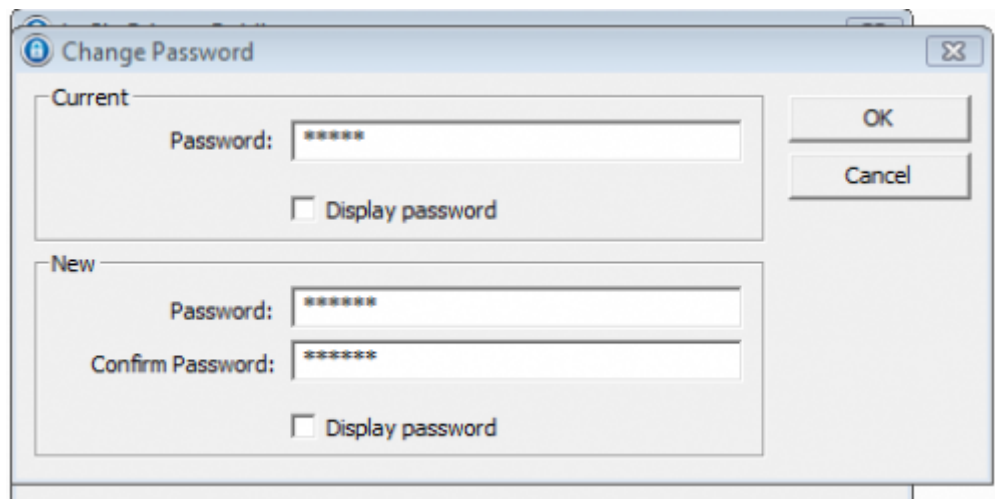




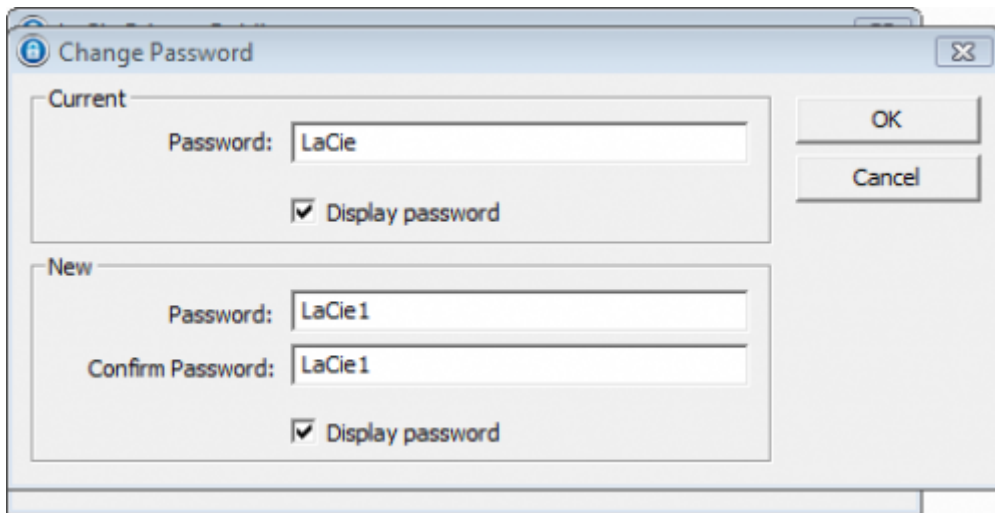
4. Click on the button **Change Password**.
5. Enter your **Current Password** as well as the **New Password**. You must also complete the field **Confirm Password** with the new password.



6. Check the **Display Password** boxes to see the characters as they are typed.







7. Click **OK**.
8. Your password has been changed.



## DELETE LA-PRIVATE

**Important Info:** Removing the LA-PRIVATE volume will delete all of its data. LaCie highly recommends that you copy all data from LA-PRIVATE to a temporary location before deleting the secure volume.

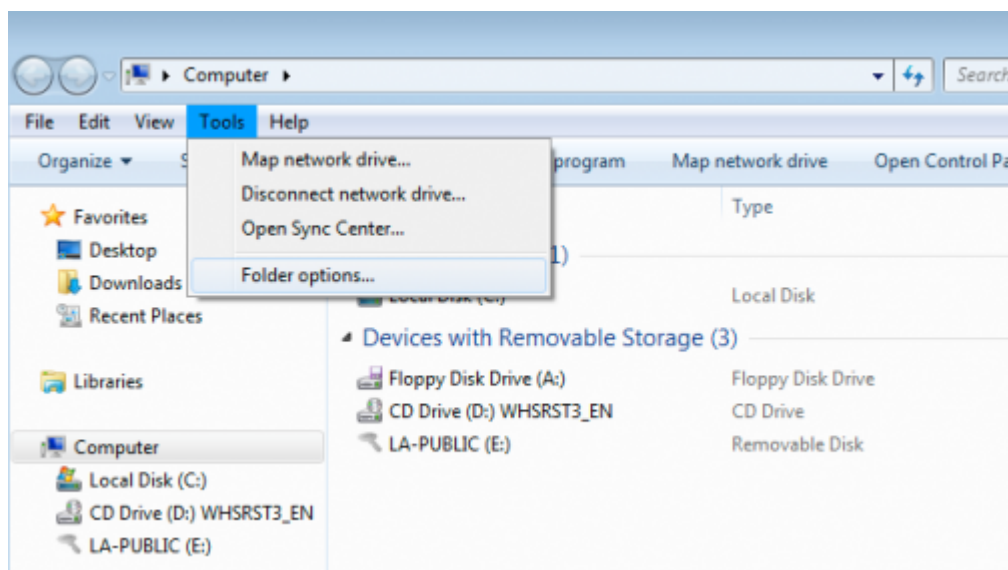
## Invisible Files

Deleting LA-PRIVATE requires that hidden files are made visible. Follow the steps below to reveal hidden files and delete the LA-PRIVATE volume.

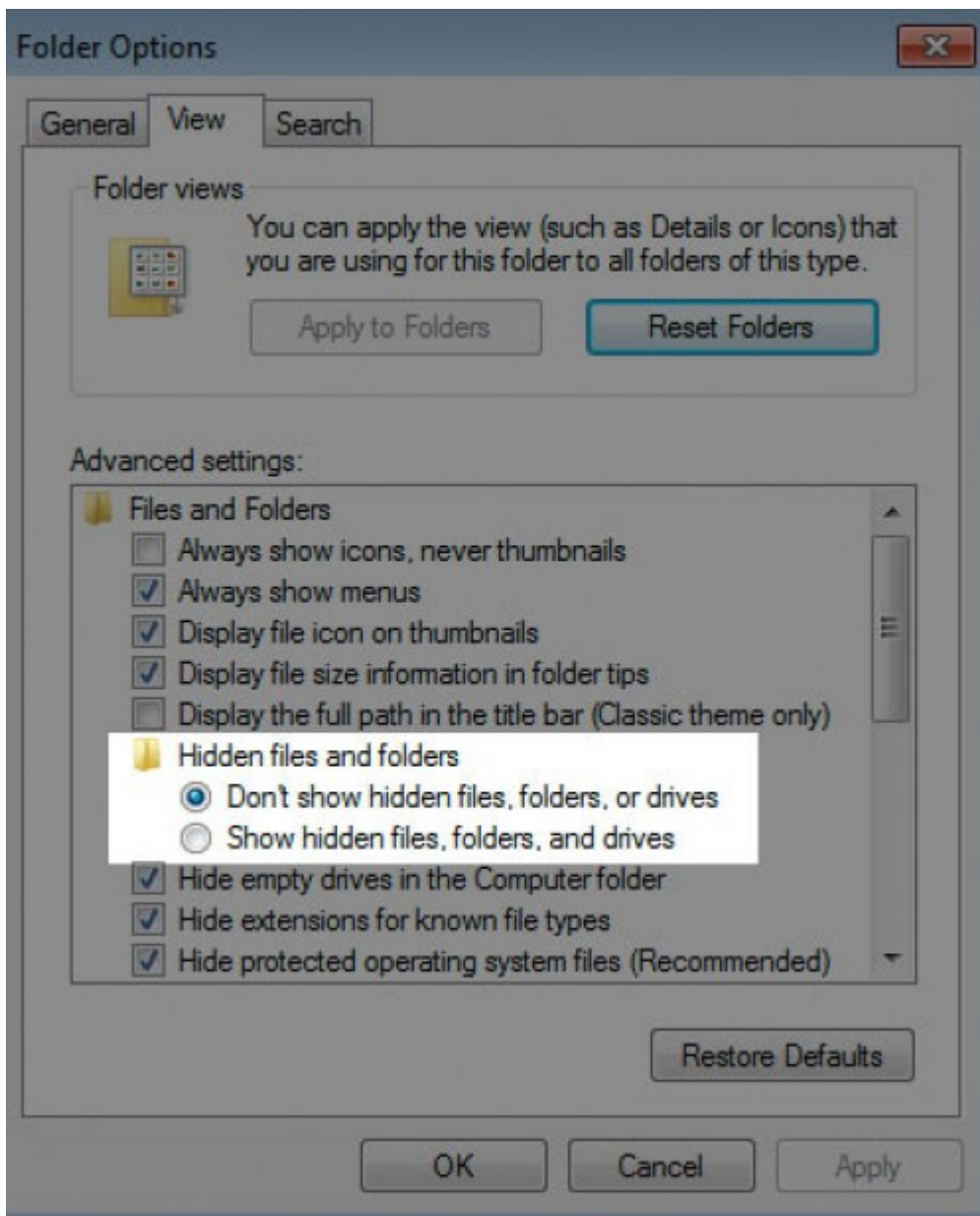
### Windows

1. Insert the LaCie storage device into the compatible interface port on your computer.

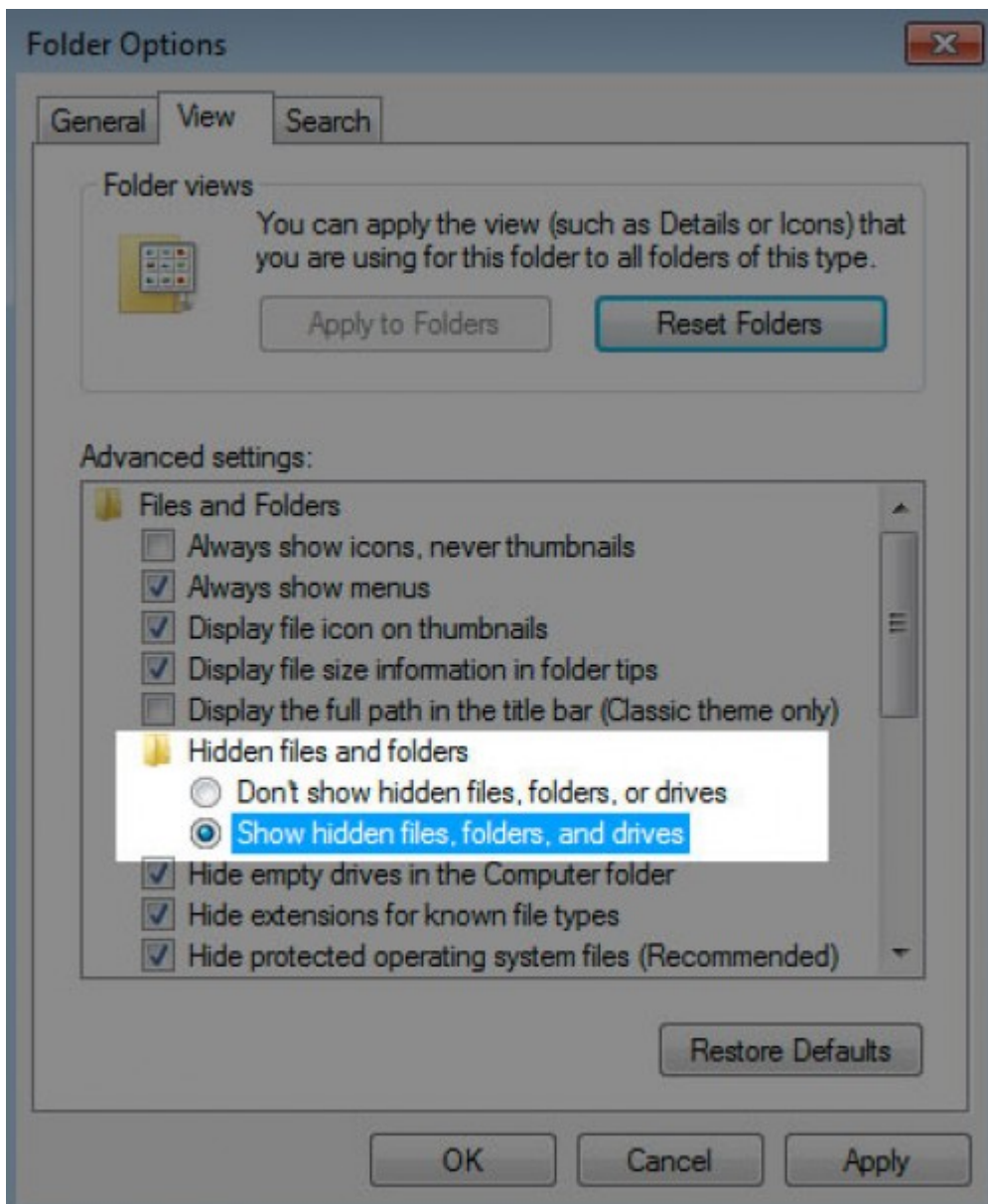
2. Click **Start > My Computer/Computer**. You should see LA-PUBLIC.
3. Go to the pulldown menu **Tools > Folder Options**.



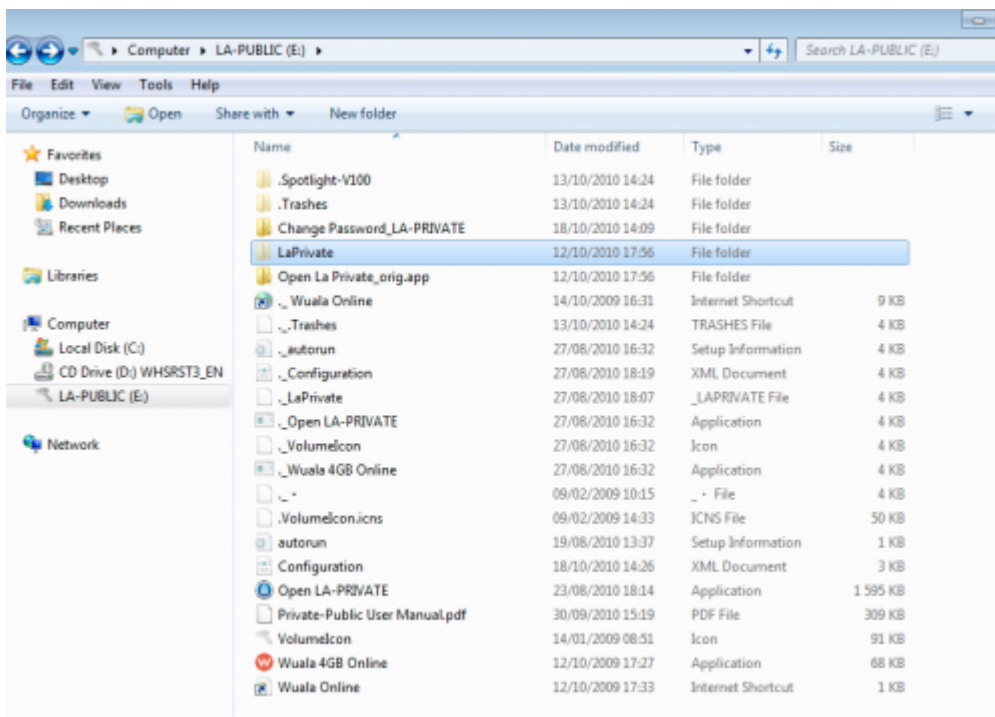
4. Note the section called *Hidden files and folders*. The default setting is “Don't show hidden files, folders, or drives”.



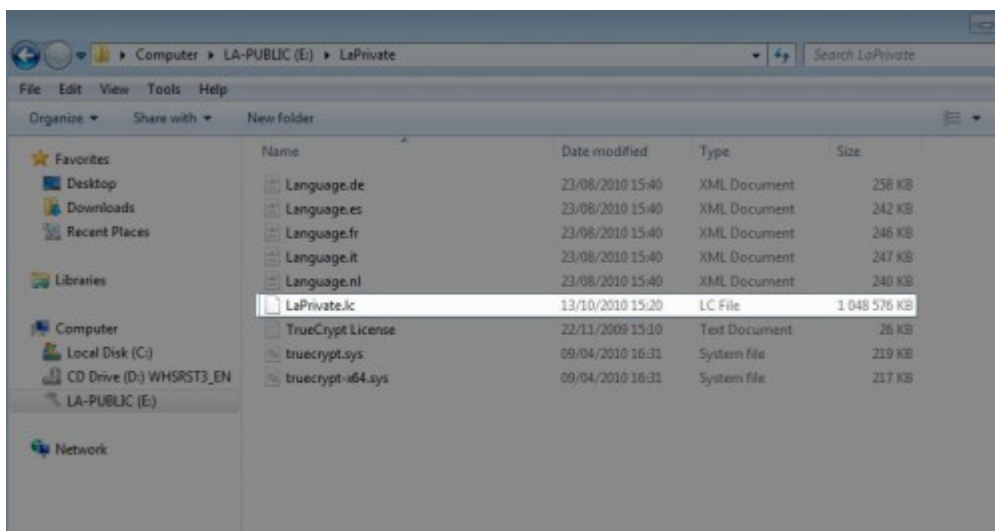
5. Change the *Hidden files and folders* setting to “Show hidden files, folders, and drives”. Click **Apply**.



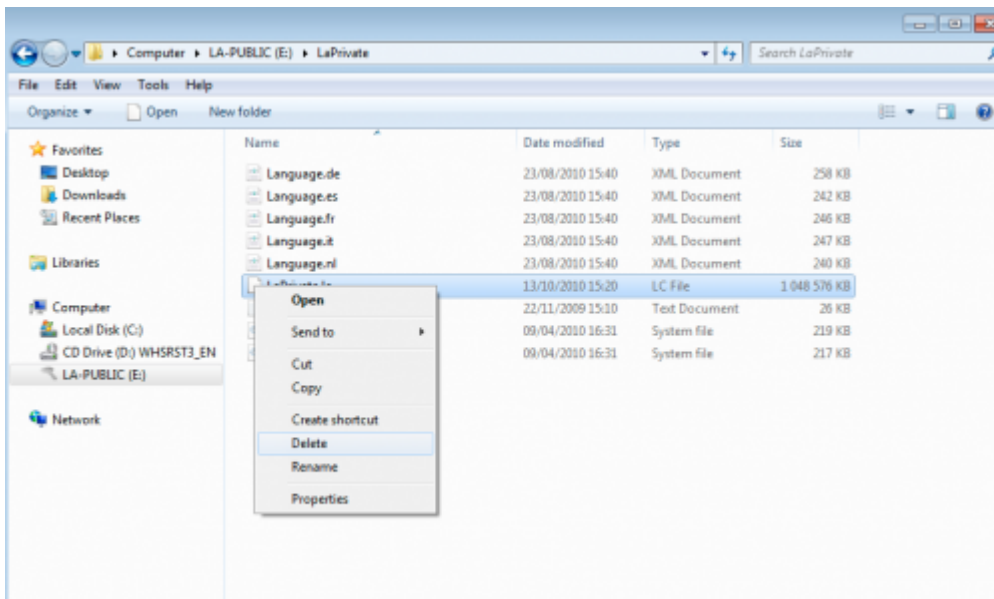
6. Go to the LA-PUBLIC partition and open the folder called **LaPrivate**.



7. Look for the file called “LaPrivate.lc”.



8. Right-click on “LaPrivate.lc” and select **Delete**.

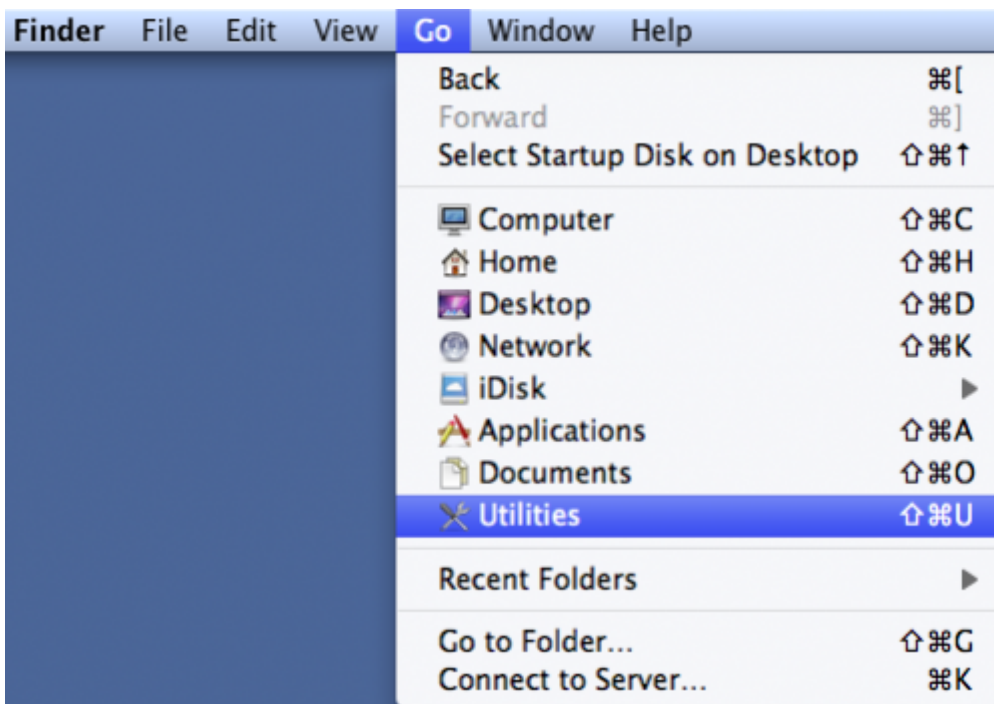


9. The LA-PRIVATE volume has been deleted.
10. To restore your folder settings, go to **Tools > Folder Options**. Select “Don't show hidden files, folders, or drives” and click **Apply**.

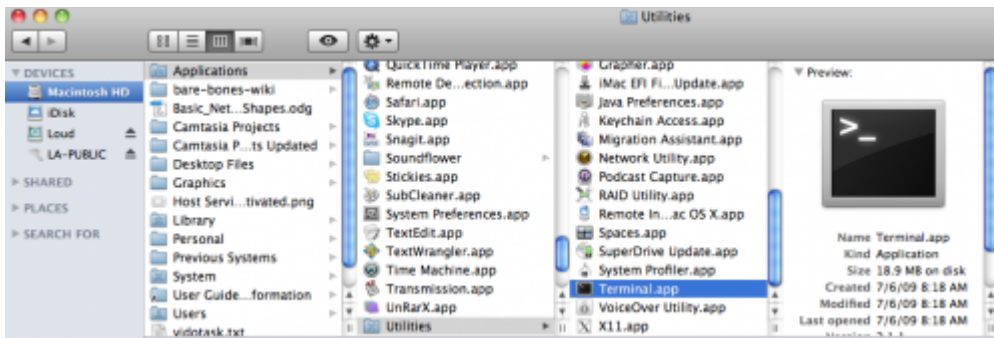
## Mac

Revealing hidden files in Mac OS X 10.5/10.6 requires the Terminal program.

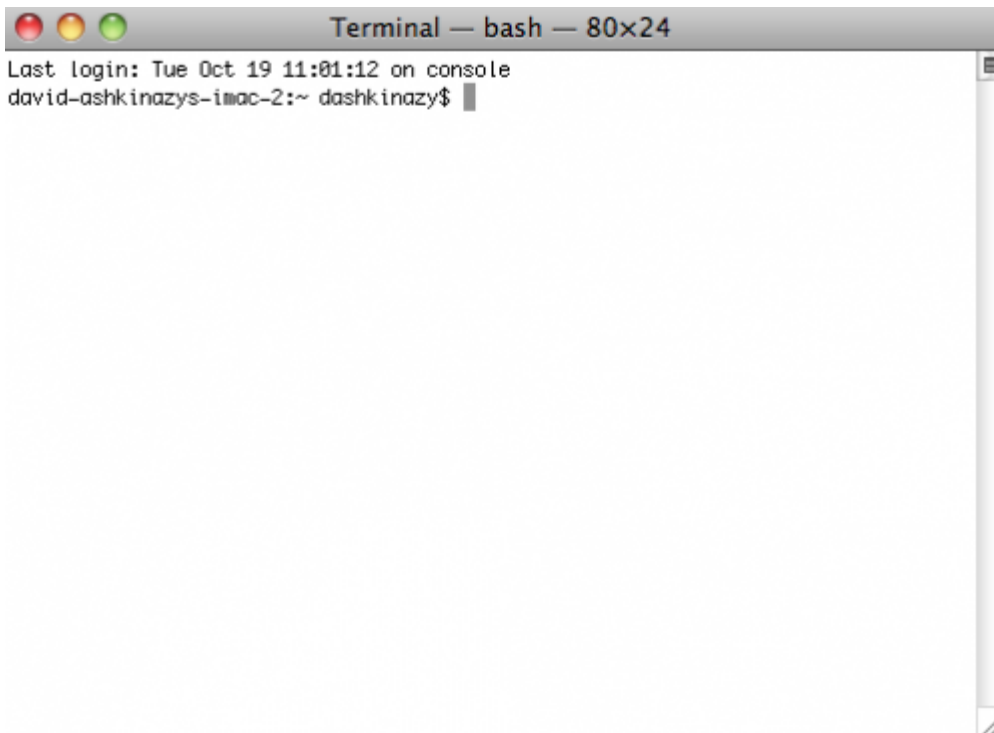
1. Insert the LaCie storage device into the compatible interface port on your computer. The LA-PUBLIC icon should appear on the desktop.
2. Go to the pulldown menu **Go > Utilities**.



3. Click twice on the program **Terminal**.



4. The Terminal window will appear. To reveal hidden files, type the following string exactly as it appears, including spaces and capital letters:  
*defaults write com.apple.Finder AppleShowAllFiles YES*





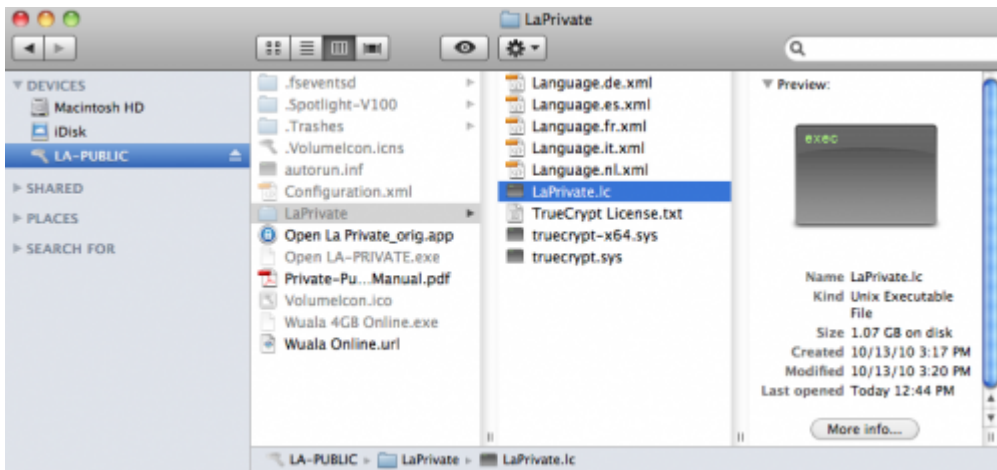


5. You must now restart the Finder. Push the following buttons on your Macintosh keyboard at the same time: **option+cmd+esc**. The Force Quit Applications window will open. Select **Finder** and click **Relaunch**.

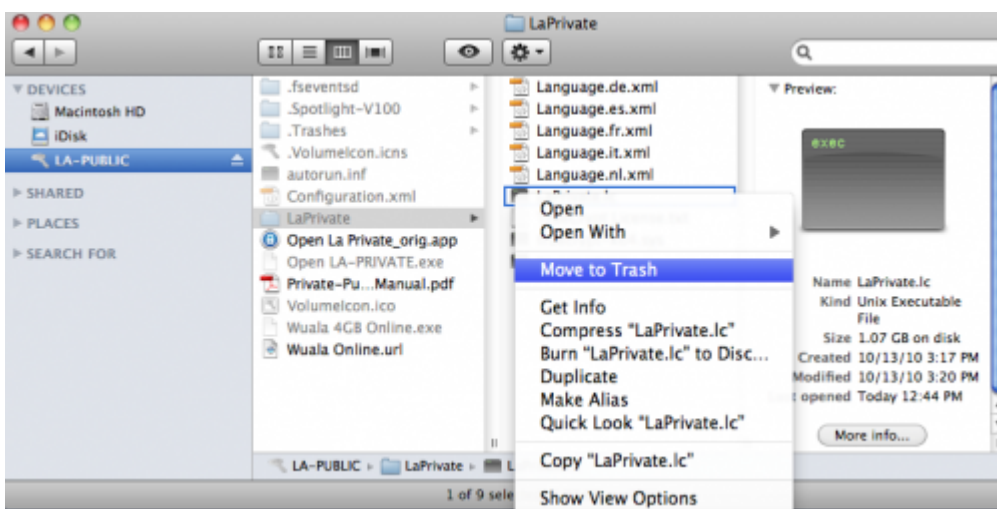


6. After the Finder has restarted, open the LA-PUBLIC partition on your LaCie storage device.
7. Open the LaPrivate folder and look for the file called "LaPrivate.lc".

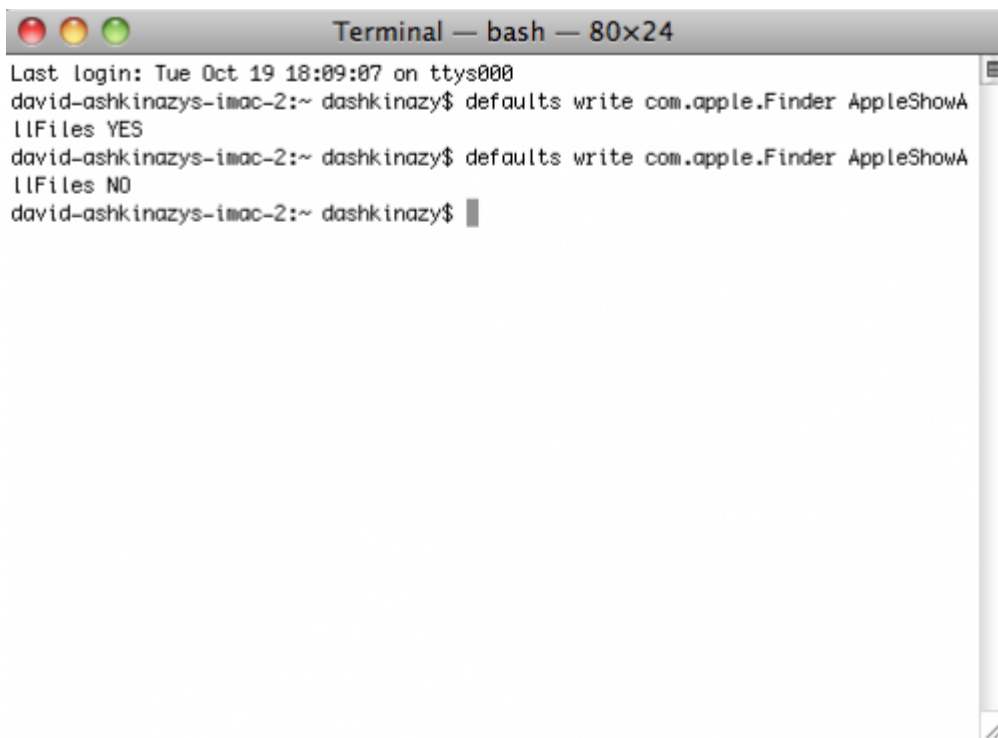




8. Right-click on “LaPrivate.ic” and select **Move to Trash**.



9. The LA-PRIVATE volume has been deleted.
10. To conceal hidden files, go to the pulldown menu **Go > Utilities**. Open the Terminal application and type the following string exactly as it appears, including spaces and capital letters:  
*defaults write com.apple.Finder AppleShowAllFiles NO*



```
Terminal — bash — 80x24
Last login: Tue Oct 19 18:09:07 on ttys000
david-ashkinazys-imac-2:~ dashkinazy$ defaults write com.apple.Finder AppleShowAllFiles YES
david-ashkinazys-imac-2:~ dashkinazy$ defaults write com.apple.Finder AppleShowAllFiles NO
david-ashkinazys-imac-2:~ dashkinazy$
```

11. You must now restart the Finder. Push the following buttons on your Macintosh keyboard at the same time: **option+cmd+esc**. The Force Quit Applications window will open. Select **Finder** and click **Relaunch**.
12. Hidden files are now concealed.

# FORMATTING YOUR LACIE USB KEY

Your LaCie USB Key is shipped with one large partition called LA-PUBLIC. Using the LaCie Private-Public application included on your USB key, you can create a secure volume called LA-PRIVATE. The LA-PRIVATE volume is password-protected and it uses strong AES 256 encryption to keep your most important data safe from unauthorized users.

You may also use Disk Management (Windows) or Disk Utility (Mac) to format and partition your LaCie USB Key. Please note that formatting any storage device will delete all of its data. Therefore, LaCie highly recommends copying all data stored on LA-PUBLIC and LA-PRIVATE before partitioning the USB key. Do not forget to copy the LaCie Private-Public application with your data. You may create a secure LA-PRIVATE volume once the format is complete.

**Important Info:** Formatting and partitioning your LaCie storage device will delete all data stored on the LA-PUBLIC and LA-PRIVATE partitions. LaCie highly recommends copying all data stored on your LA-PUBLIC and LA-PRIVATE partitions before attempting to partition the LaCie USB Key.

**Please read the following section carefully before formatting and partitioning your LaCie storage device.**

## ABOUT FILE SYSTEM FORMATS

### Windows Users

**FAT 32:** FAT is an acronym for File Allocation Table, which dates back to the beginnings of DOS programming. Originally, FAT was only 16 bits, but after the second release of Windows 95 it was upgraded to 32 bits, hence the name FAT 32. In theory, FAT 32 volume sizes can range from less than 1MB all the way to 2TB.

It is the native file system of Windows 98 and Windows Me, and is supported by Windows 2000, Windows XP, Windows Vista, and Windows 7. When FAT 32 is used with Windows 2000, Windows XP, Windows Vista, and Windows 7 however, volume size is limited to 32GB (by the Windows partition utility, i.e. Disk Manager), and the individual file size is limited to 4GB.

**NTFS:** This acronym stands for New Technology File System, and it is the native file system for Windows NT, 2000, XP, Vista, and 7. NTFS offers several features that are not available with FAT 32: file compression, encryption, permissions, auditing, and mirroring drives. The minimum supported volume size for NTFS is 10MB with a maximum of 2TB when initialized in the MBR format. The more recent GPT format does not assign limits to file or partition sizes. Volumes created in NTFS are native read and write for Windows NT, 2000, XP, Vista, and 7. Earlier versions of Windows and Mac OS X 10.5 or higher may read and write to the NTFS partitions with the help of third-party drivers.

See the table below for a comparison of NTFS and FAT 32.

Windows File System Formats
<b>Use NTFS if:</b>
...you will be using the storage device only with Windows XP, Vista, and 7 since performance will be enhanced when compared to FAT 32. This file system is compatible in read-only mode with Mac OS 10.3 and higher.
<b>Use FAT32 if:</b>
...you will be using your storage device with both Windows and Mac computers. Maximum single file size is limited to 4GB.

## Mac Users

You may customize the storage device by reformatting and/or partitioning it with separate file system formats. For optimal performance in Mac OS environments, format and partition the storage device as one large Mac OS Extended volume.

**Mac OS Extended (HFS+):** Mac OS Extended refers to the file system used by Mac OS X. HFS+ represents an optimization of the older HFS file system by using hard disk space more efficiently. With HFS+, you are no longer limited by block size.

**MS-DOS File System (FAT 32):** This is the Microsoft file system, more typically known as FAT 32. Use FAT 32 if you are going to be sharing your LaCie storage device between Mac and Window computers.

See the table below for a comparison between HFS+ and FAT 32 (MS-DOS).

Mac File System Formats
<b>Use HFS+ if:</b>
...you will be using the storage device on Macs only. Performance will be enhanced when compared to FAT 32. HFS+ is NOT compatible with Windows OS.
<b>Use FAT32 if:</b>
...you will be using your storage device with both Windows and Mac computers. Maximum single file size is limited to 4GB.

## FORMATTING INSTRUCTIONS

The steps listed below will help you to format and partition a storage device. For more information on choosing the optimal file format, refer to [About File System Formats](#).

**Caution:** Formatting will erase everything on the storage device. **LaCie highly recommends that you back up all data on your storage device before performing the steps below. LaCie is not responsible for any data lost due to formatting, partitioning, or using a LaCie storage device.**

**Important Info:** Depending upon your LaCie storage device, formatting the “LaCie” partition or the “LA-PUBLIC” partition will delete the included User Manual and utilities. Please copy all data, including documentation and software from LaCie, before formatting your storage device. User Manuals and select software may also be downloaded from [www.lacie.com/support/](http://www.lacie.com/support/).

**Note:** Refer to your operating system's documentation for more information on reformatting and partitioning your storage device.

## Windows Users

**Technical Note on volumes larger than 2TB:** *Windows XP 32-bit* - This version of Windows will not recognize volumes larger than 2TB; *Windows XP x64, Vista and 7* - All of these versions of Windows can recognize volumes greater than 2TB. However, disks must be converted to the GPT file system before partitions greater than 2TB can be created. To do this, go to Windows Disk Management and right-click on the disk. Select **Convert to GPT**. You may now create partitions greater than 2TB.

1. Make sure the storage device is connected to and mounted on the computer.
2. Right-click on **Computer** and choose **Manage**. From the Manage window select **Disk Management**.
3. From the list of storage devices in the middle of the Disk Management window, locate your LaCie device.
4. By default, a partition is already created on the device with LaCie software utilities. Follow your operating system instructions to reset the existing partition.
5. To create a new partition, select **New Simple Volume**. Follow the on-screen instructions when the New Simple Volume Wizard appears.

## Mac Users

1. Make sure the storage device is connected to and mounted on the computer.
2. Select **Utilities** from the **Go** menu in the Finder menu bar.
3. In the Utilities folder, double-click **Disk Utility**.

Disk Utility will display the message **Select a disk, volume, or image**. All connected storage devices, partitions, or disk images will be displayed in this column. Storage devices in this column may have multiple listings. The top name is the name of the physical device's manufacturer, and includes the formatted capacity.

4. Select the storage device in the left-hand column.
5. Click the **Erase** tab.
6. Choose a format from the drop-down window. See [About File System Formats](#) for more information on choosing a file format.
7. Give the volume a name.
8. Click **Erase...** and confirm your selection in the popup window.

# GETTING HELP

If you are having problems with your LaCie product, consult the table below for a list of available resources.

Order	Source	Description	Location
1	Quick Install Guide	Concise steps to follow for getting your product up and running	Printed and included in the product box, or download PDF from the product page
2	Support Pages	Includes interactive troubleshooting topics for most common problems	<a href="http://www.lacie.com/support/">www.lacie.com/support/</a> , select your product, then click the “Troubleshooting” tab
3	User Manual	Includes common troubleshooting topics	See <a href="#">Troubleshooting Topics</a>
4	LaCie Lounge Technical Support forum	A free forum, moderated by LaCie, for customers to seek advice	<a href="http://www.lacielounge.com/index.php?option=com_kunena&amp;Itemid=49&amp;lang=en">www.lacielounge.com/index.php?option=com_kunena&amp;Itemid=49&amp;lang=en</a>
5	Customer Support	Create an account on <a href="http://lacie.com">lacie.com</a> , register your product, and fill out a support ticket	Create an account here: <a href="http://www.lacie.com/us/mystuff/login.htm?logout&amp;rtn=mystuff">www.lacie.com/us/mystuff/login.htm?logout&amp;rtn=mystuff</a>

**Note:** LaCie is dedicated to providing high quality products that enrich the lives of our customers. To help LaCie offer the best customer support, we encourage you to create an account and register your product at [www.lacie.com/us/mystuff/login.htm?logout&rtn=mystuff](http://www.lacie.com/us/mystuff/login.htm?logout&rtn=mystuff). You can give us important feedback as well as receive updated information on your LaCie device.



## TROUBLESHOOTING TOPICS

**Note:** Interactive troubleshooting, a highly effective way to resolve problems with your product, is available from [www.lacie.com/support/](http://www.lacie.com/support/). Select your product, then click the “Troubleshooting” tab.

### All Users

#### Problem: My file transfers are too slow.

Q: Are there other USB devices connected to the same port or hub?

A: Disconnect any other USB devices and see if the performance improves.

---

Q: Is the storage device connected to a USB 2.0 port on your computer or hub?

A: If your drive is connected to a legacy USB port or hub, this is normal. A Hi-Speed USB 2.0 device can only operate at USB 2.0 performance levels when it is connected directly to a USB 2.0 port or hub. Otherwise, the USB 2.0 device will operate at the slower legacy USB transfer rates. Consider buying a USB 2.0 PCI Express Card (for desktop computers) or an ExpressCard 34 (for laptops) to allow your computer to achieve full USB 2.0 transfer speeds. Visit [www.lacie.com/accessories/](http://www.lacie.com/accessories/) for information.

---

Q: Is the device connected to a Hi-Speed USB 2.0 port on your computer?

A: Check to see that the Hi-Speed USB 2.0 drivers for both your host bus adapter and device have been installed correctly. If in doubt, uninstall the drivers and reinstall them.

---

Q: Is the USB 2.0 key connected to a SuperSpeed USB 3.0 port?

A: While your LaCie USB 2.0 key can be plugged into a USB 3.0 interface, transfer rates will continue to run at USB 2.0 speeds. The key cannot achieve SuperSpeed USB 3.0 transfer rates since it is a USB 2.0 device.

---

#### Problem: File transfer error messages.

Q: Did you get an "Error -50" message while copying to a FAT 32 volume?

A: Certain characters cannot be included in the names of folders and files that are copied to a FAT 32 volume. These characters include but are not limited to:

? < > / \ :

Check your files and folders to ensure that these types of characters are not being used.

The easiest solution is to check for incompatible characters in file names, change them, then resume file transferring.

---

Q: Did you receive an error message telling you that the device has been disconnected directly after the disk exited sleep mode?

A: Please ignore this message.

---

## Mac OS X Users

### Problem: The storage device icon does not appear on my desktop.

Q: Is the USB device firmly attached to your computer's USB port?

A: Check the USB connection between the device and your computer. Confirm that it is fully seated in the USB port. You can also try disconnecting the device, waiting 10 seconds, and then reconnecting it. If the storage device is still not recognized, restart your computer and try again. Still not working? Read on.

---

Q: Is your Finder configured not to show storage devices on the desktop?

A: Go to your Finder and select the pulldown **Finder > Preferences > General tab > Show these items on the desktop:**. Confirm that **Hard Disks** is selected. If not, click on the check box and see if the storage device has mounted on the desktop. If it is already selected, go to the next topic.

---

Q: Is your device available to the operating system?

A: Open Disk Utility (Pulldown menu **Go > Utilities > Disk Utility**). If the storage device is listed in the left-hand column, click on it. Check to see if the **Mount** option on the top row of icons becomes active. If it does, click on it. If the storage device continues to have trouble mounting or the **Mount** option is not available, you may need to format it. See [Formatting Your LaCie USB Key](#).

---

Q: Does your computer's configuration meet the minimum system requirements for use with this storage device?

A: Please refer to the product packaging or consult the product support web page at [www.lacie.com/support/](http://www.lacie.com/support/) to check the minimum system requirements.

---

Q: Did you follow the correct installation steps for the specific interface and operating system?

A: Review the installation steps in [Connecting your LaCie iamaKey to a Computer](#) and [Creating and Using the Secure LA-PRIVATE Volume](#). Confirm that all steps have been followed for your configuration (i.e. USB interface, operating system, etc).

Still not working? There may be a hardware defect or other problem. Contact [www.lacie.com/support/](http://www.lacie.com/support/).

---

## Windows XP, Vista, and 7 Users

### Problem: The storage device icon does not appear in My Computer/Computer.

Q: Is the USB device firmly attached to your computer's USB port?

A: Check the USB connection between the device and your computer. Confirm that it is fully seated in the USB port. You can also try disconnecting the device, waiting 10 seconds, and then reconnecting it. If the storage device is still not recognized, restart your computer and try again. Still not working? Read on.

---

Q: Is the storage device listed in Device Manager?

A: All LaCie devices appear in at least one place in Device Manager.

---

To access Device Manager, click on **Start** and select **Run** from the menu. For Windows Vista and Windows 7, press [Windows-button] and [R] on your keyboard.

Enter the command: **devmgmt.msc**

Click **OK** and the Device Manager program will open. For troubleshooting, look in the **Disk Drives** section. It might be necessary to click on **+** on the left side.

If it is unclear where to find the storage device or if it is present, unplug it, then reconnect it. The entry that changes is your LaCie storage device.

---

Q: Is your device available in My Computer/Computer?

A: If not, proceed to physical troubleshooting topics above.

---

Q: Is your storage device listed next to an unusual icon?

A: Windows Device Manager can usually provide information about failures in accessories. It does not display the exact cause, or a solution, but it can assist in troubleshooting most problems.

A problematic device can be found by its unusual icon. Instead of the normal icon based on the type of device, it is can be an exclamation point, question mark, or an X.

Right-click this icon, then choose **Properties**. The **General** tab will show why the device is not working.

Still not working? There may be a hardware defect or other problem. Time to contact [www.lacie.com/support/](http://www.lacie.com/support/).

---

## LA-PRIVATE FREQUENTLY ASKED QUESTIONS

LA-PRIVATE is a secure volume that takes advantage of strong Advanced Encryption Standard (AES) 256 to keep your most important data safe. The included LaCie Private-Public application allows a user to easily create and manage a LA-PRIVATE volume (See [Creating and Using the Secure LA-PRIVATE Volume](#)). Please see our list of frequently asked questions below for further information on LA-PRIVATE.

Q: Does LaCie Private-Public work on a Macintosh computer?

A: Yes. LaCie Private-Public is supported on Macintosh computers with:

- The most recent versions of Mac OS X 10.5 or 10.6.
- An Intel processor
- MacFUSE (See [Mac Users: Install MacFUSE Before Creating LA-PRIVATE](#))

---

Q: LaCie Private-Public will not let me create a LA-PRIVATE volume larger than 4 GB. Why?

A: There may be more than one reason that you cannot create a LA-PRIVATE volume larger than 4 GB. Two possible explanations:

- Your LaCie storage device already has data on LA-PUBLIC. LaCie Private-Public is protecting the data stored on LA-PUBLIC from being erased by limiting the size of LA-PRIVATE.
- You formatted LA-PUBLIC as FAT 32. Due to system format limitations, LA-PRIVATE cannot exceed 4 GB on a FAT 32 partition. You must recreate the LA-PUBLIC partition as NTFS (Windows) or HFS+ (Mac) in order to create a larger LA-PRIVATE volume. Please note that formatting a storage device will delete all of its data. Follow the steps below to create a new LA-PRIVATE volume:

1. **Copy all data stored on the LaCie and LA-PUBLIC partitions as well as the existing LA-PRIVATE volume before reformatting your storage device.** You can copy the data to a temporary location such as your internal hard drive or another storage device. Please make certain to copy your LaCie User Manual and software utilities as well. You will require LaCie Private-Public to recreate the new LA-PRIVATE volume.
2. See [About File System Formats](#) for further information on formatting your storage device as NTFS or HFS+. You may name the new NTFS or HFS+ partition "LA-PUBLIC" for ease of reference but it is not mandatory.
3. Once the format is complete, copy LaCie Private-Public to your new NTFS or HFS+ partition.
4. See [Creating and Using the Secure LA-PRIVATE Volume](#) for instructions on creating a new LA-PRIVATE volume.

---

Q: I can only create a LA-PRIVATE volume with 1, 10, or 100 unit increments. For example, 5 GB, 50 GB, or 500 GB. I want to create a LA-PRIVATE volume that is 5.5 GB, 50.5 GB, or 550 GB. Is it possible?

A: Yes. See [Create the LA-PRIVATE Volume](#). Please note the details regarding the pulldown menu for MB/GB in **Step 5**.

---

Q: Where do I go to access the LA-PRIVATE volume?

A: You must launch LaCie Private-Public to enter the password. See [Mounting the LA-PRIVATE Volume](#).

---

Q: How do I lock the LA-PRIVATE volume from unauthorized access?

A: See [Unmounting and Locking LA-PRIVATE](#).

---

Q: Can I change the LA-PRIVATE password?

A: Yes. See [Changing the LA-PRIVATE Password](#) for further information.

---

Q: What happens if the LA-PRIVATE password is lost or forgotten?

A: To protect your security, the LA-PRIVATE password is heavily protected and not available for others to recover. This also applies to an authorized user who has lost or forgotten his LA-PRIVATE password. Unfortunately, the data on LA-PRIVATE is not available to anyone, including LaCie, without the password. **Please note that LaCie is not responsible for any data that has been lost due to a forgotten LA-PRIVATE password.** Consider using a password that is easy for you to remember but close to impossible for unauthorized users to guess. As well, LaCie highly recommends noting your LA-PRIVATE password on paper and keeping it in a safe place.

---

Q: Do I have to be an administrator to use LaCie Private-Public and to open LA-PRIVATE?

A: You must have administrative rights to your computer in order to run LaCie Private-Public and to access the LA-PRIVATE volume.

---

# PRECAUTIONS

**Caution:** Modifications not authorized by the manufacturer may void the user's authority to operate this device.

**Important info:** Any loss, corruption or destruction of data while using a LaCie storage device is the sole responsibility of the user, and under no circumstances will LaCie be held liable for the recovery or restoration of this data. To help prevent the loss of your files, LaCie highly recommends that you keep TWO copies of your data. Consider placing one copy of your data on an external storage device and a second copy on your computer's internal hard disk, another external storage device, or some other form of removable storage media. If you would like more information on backup, please refer to our website.

**Important info:** 1TB (Terabyte) = 1,000GB. 1GB = 1000MB. 1MB = 1,000,000 Bytes. Total accessible capacity varies depending upon operating environment (typically up to 10% less per TB).

## HEALTH AND SAFETY PRECAUTIONS

- Only qualified persons are authorized to carry out maintenance on this device.
- Read this User Manual carefully and follow the correct procedure when setting up the device.
- Do not open a storage device or attempt to disassemble or modify it. Never insert any metallic object into the device to avoid any risk of electrical shock, fire, short-circuiting, or dangerous emissions. The storage device contains no user-serviceable parts. If it appears to be malfunctioning, have it inspected by a qualified LaCie Technical Support representative.
- Never expose your device to rain, or use it near water, or in damp or wet conditions. Never place objects containing liquids on the LaCie storage device, as they may spill into its openings. Doing so increases the risk of electrical shock, short-circuiting, fire, or personal injury.

## GENERAL USE PRECAUTIONS

- Do not expose the LaCie storage device to temperatures outside the range of 5° C to 30° C (41° F to 86° F); or to operational humidity beyond 5-80%, non-condensing, or non-operating humidity beyond 10-90%, non-condensing. Doing so may damage the LaCie device or disfigure its casing. Avoid placing your LaCie storage device near a source of heat or exposing it to direct or indirect sunlight. Indirect sunlight includes, but is not limited to exposure to the sun through a window. Placing your LaCie device in an environment that is too cold may damage it.
- Do not use the LaCie device near other electrical appliances such as televisions, radios or speakers. Doing so may cause interference which will adversely affect the operation of the other products.
- Do not place the LaCie device near sources of magnetic interference, such as computer displays, televisions, or speakers. Magnetic interference can affect the operation and stability of your LaCie device.
- Never use excessive force on your LaCie device. If you detect a problem, consult the troubleshooting section in this manual.
- Protect your LaCie device from excessive exposure to dust during use or storage. Dust can build up inside the

device, increasing the risk of damage or malfunction.

- Never use benzene, paint thinners, detergent, or other chemical products to clean the outside of the LaCie device. Such products will disfigure and discolor the casing. Instead, use a soft, dry cloth to wipe the device.

# WARRANTY INFORMATION

LaCie offers first-rate service and support through our generous three-tiered warranty policy. Our 1-, 2- and 3-year policies include comprehensive, complimentary web-based resources, expert in-house technical support, and worldwide repair and/or replacement coverage. To benefit from this warranty, please contact LaCie Support at [www.lacie.com/us/support/index.htm](http://www.lacie.com/us/support/index.htm) where you can find online support and contact information. You may also contact representatives at the original point of purchase who will be able to help guide you. Warranties vary depending on the product:

- 1-year limited - consumer level
- 2-year limited - prosumer level
- 3-year limited - professional level
- 5-year limited - enterprise class level (more information: [www.lacie.com/us/more/?id=10100](http://www.lacie.com/us/more/?id=10100) )
- Optional 3-year LaCie Advance Care Option (sold separately)<sup>1</sup>

For a detailed list of product warranties, go to [www.lacie.com/products/warranty.htm](http://www.lacie.com/products/warranty.htm).

## LACIE LIMITED WARRANTY POLICY

LaCie ("LaCie") warrants, to the original purchaser, that this equipment shall be free of defects in materials and workmanship for a period of one (1), two (2), three (3), or five (5) years, depending on the model, from LaCie's date of original shipment when the equipment is used normally and is properly serviced when needed. If you discover a defect covered by the warranty set forth above, your sole and exclusive remedy will be for LaCie, in its sole discretion to (i) repair or replace the product at no charge to you; or, if a repaired unit or replacement product is not available, (ii) to refund the current market value of your product. You acknowledge and agree that replacement product, at the sole option of LaCie, may be a new product or a remanufactured product. In order to receive the remedy set forth above, you must return the product during the warranty period and include with each returned product (i) a copy of your original purchase invoice to verify your warranty; (ii) a Return Material Authorization number; (iii) your name, address and telephone number; (iv) a copy of the bill of sale bearing the appropriate LaCie serial numbers as proof of date of original retail purchase; and (v) a description of the problem. The customer must pay all transportation costs for a returned product. The product will need to be returned to LaCie within the country of original retail purchase. This warranty applies only to hardware products; LaCie software, media, and manuals are licensed and warranted pursuant to separate written agreement. This warranty does not apply if the product has been misused or has been damaged by accident, abuse, misuse, or misapplication; if it has been modified without permission of LaCie; or if any LaCie serial number has been removed or defaced. If a customer has purchased a LaCie Advance Care Option (ACO) to go with this equipment, the ACO shall be valid for three (3) years from activation.

EXCEPT FOR THE LIMITED WARRANTY SET FORTH ABOVE, ALL PRODUCTS ARE SOLD "AS IS" AND LACIE EXPRESSLY DISCLAIMS ALL WARRANTIES OF ANY KIND, WHETHER EXPRESS, IMPLIED OR STATUTORY, INCLUDING THE IMPLIED WARRANTIES OF MERCHANTABILITY, NONINFRINGEMENT AND FITNESS FOR A PARTICULAR PURPOSE. WITHOUT FURTHER LIMITING THE GENERALITY OF THE FOREGOING, DOES NOT WARRANT (1) THE PERFORMANCE OR RESULTS OBTAINED FROM USING THIS PRODUCT, (2) THAT THE PRODUCT IS APPROPRIATE FOR THE CUSTOMER'S PURPOSES, (3) THE MANUAL IS ERROR FREE, OR (4) THAT NO DATA WILL BE LOST WHILE USING THE PRODUCT. THE ENTIRE RISK AS TO THE RESULTS AND PERFORMANCE IS ASSUMED BY THE CUSTOMER. THE WARRANTY AND REMEDIES SET FORTH ABOVE ARE EXCLUSIVE AND IN LIEU OF ALL OTHERS, ORAL OR WRITTEN, EXPRESS OR IMPLIED.



## EXCLUSIONS AND LIMITATIONS

This Limited Warranty applies only to hardware products manufactured by or for LaCie that can be identified by the “LaCie” trademark, trade name, or logo affixed to them. The Limited Warranty does not apply to any non-LaCie hardware products or any software, even if packaged or sold with LaCie hardware. Manufacturers, suppliers, or publishers, other than LaCie, may provide their own warranties to the end user purchaser, but LaCie, in so far as permitted by law, provides their products “as is”. Software distributed by LaCie with or without the LaCie brand name (including, but not limited to system software) is not covered under this Limited Warranty. Refer to the licensing agreement accompanying the software for details of your rights with respect to its use.

LaCie does not warrant that the operation of the product will be uninterrupted or error-free. LaCie is not responsible for damage arising from failure to follow instructions relating to the product's use. This warranty does not apply: (a) to consumable parts, unless damage has occurred due to a defect in materials or workmanship; (b) to cosmetic damage, including but not limited to scratches, dents and broken plastic on ports; © to damage caused by use with non-LaCie products; (d) to damage caused by accident, abuse, misuse, flood, fire, earthquake or other external causes; (e) to damage caused by operating the product outside the permitted or intended uses described by LaCie; (f) to damage caused by service (including upgrades and expansions) performed by anyone who is not a representative of LaCie or a LaCie Authorized Service Provider; (g) to a product or part that has been modified to alter functionality or capability without the written permission of LaCie; or (h) if any LaCie serial number on the product has been removed or defaced.

No LaCie dealer, agent, or employee is authorized to make any modification, extension, or addition to this warranty.

Any loss, corruption or destruction of data while using a LaCie drive is the sole responsibility of the user, and under no circumstances will LaCie be held liable for the recovery or restoration of this data. To help prevent the loss of your data, LaCie highly recommends that you keep TWO copies of your data; one copy on your external hard disk, for instance, and a second copy either on your internal hard disk, another external hard disk or some other form of removable storage media. LaCie offers a complete line of CD and DVD drives. If you would like more information on backup, please refer to our website.

LACIE IS NOT RESPONSIBLE FOR SPECIAL, INCIDENTAL, OR CONSEQUENTIAL DAMAGES RESULTING FROM ANY BREACH OF WARRANTY, OR UNDER ANY LEGAL THEORY, INCLUDING LOST PROFITS, DOWNTIME, GOODWILL, DAMAGE TO OR REPLACEMENT OF EQUIPMENT AND PROPERTY, AND ANY COSTS OF RECOVERING, REPROGRAMMING, OR REPRODUCING ANY PROGRAM OR DATA STORED IN OR USED WITH LACIE PRODUCTS EVEN IF IT HAS BEEN ADVISED OF THE POSSIBILITY OF SUCH DAMAGES.

Some states do not allow the exclusion or limitation of implied warranties or liability for incidental or consequential damages, so the above limitation or exclusion may not apply to you. This warranty gives you specific legal rights, and you may have other rights, which vary from state to state.

Your opening of your package, your use of the product, or your return of the enclosed Registration Card acknowledges that you have read and agree to the terms of this Agreement. You further agree that it is the complete and exclusive state of the agreement between us and supersedes any proposal or prior agreement, oral or written, and any other communications between us relating to the subject matter of this Agreement.

Read carefully all information related to warranty and precautions of use of your new LaCie product in the user's manual. For products purchased in the United States, you may contact LaCie at 22985 NW Evergreen Parkway, Hillsboro, Oregon 97124. Email: [sales@lacie.com](mailto:sales@lacie.com). Website: [www.lacie.com](http://www.lacie.com). Customer service: 503-844-4503.

## SERVICE DOA

On rare occasions, a newly purchased LaCie product may be delivered in non-working order. We are working to avoid these issues, but unfortunately, these situations may arise from time to time. Within the 15 calendar days of purchase, should you experience an issue with your new LaCie product, we ask you to return the product to the place where it was originally bought. You will be required to give a proof of purchase.

## ADVANCE CARE OPTION

All products with a 3-year warranty can benefit from the LaCie Advance Care Option. This option can be purchased separately online within 30 days of the purchase date of your LaCie product and you will be asked to provide us with your proof of purchase. The Advance Care Option does not extend the original warranty period.

Under this warranty, LaCie will swap out a product without it needing to be returned first for minimal interruption of your workflow. LaCie will replace part of the product or all of it, depending on our screening process. You might receive a reconditioned product in non-retail packaging. LaCie will cover all freight costs.

The product's Serial Number must be submitted on the LaCie website first. To secure the Advance Care Option, your credit card number must be submitted as well. Should the product not be returned within 21 calendar days of the replacement product's shipment date, you will be charged for the full value of a new comparable product.

LaCie can only provide this optional warranty in countries where there is a local LaCie office.<sup>1</sup>

## CUSTOMER WARNING

Please be sure to back up your data before returning your drive to LaCie for repair. LaCie cannot under any circumstances guarantee the integrity of data remaining on a returned drive. We make no provisions for data recovery and cannot be held liable for any data loss on drives or media returned to LaCie.

All products returned to LaCie must be securely packaged in their original box and shipped with postage prepaid, except for Products registered under the Advance Care Option.

---

<sup>1</sup> The Advance Care Option is offered as an option depending on the geographic zone, limited to the following zones: Continental USA, Canada, UK, Ireland, Norway, Sweden, Finland, Denmark, Germany, Austria, Switzerland, Netherlands, Belgium, France, Spain, Italy and Australia.

# LEGAL INFORMATION

## COPYRIGHTS

Copyright © 2010 LaCie. All rights reserved. No part of this publication may be reproduced, stored in a retrieval system, or transmitted in any form or by any means, electronic, mechanical, photocopying, recording or otherwise, without the prior written consent of LaCie.

## CHANGES

The material in this document is for information only and subject to change without notice. While reasonable efforts have been made in the preparation of this document to assure its accuracy, LaCie assumes no liability resulting from errors or omissions in this document, or from the use of the information contained herein. LaCie reserves the right to make changes or revisions in the product design or the product manual without reservation and without obligation to notify any person of such revisions and changes.

## FCC STATEMENT

This device complies with Part 15 of the FCC Rules. Operation is subject to the following conditions:

- The devices may not cause harmful interference
- The devices must accept any interference received, including interference that may cause undesired operation.



This equipment has been tested and found to comply with the limits for a Class A digital device, pursuant to Part 15 of the FCC Rules. These limits are designed to provide reasonable protection against harmful interference in a residential installation. This equipment generates, uses and can radiate radio frequency energy and, if not installed and used in accordance with the instructions, may cause harmful interference to radio communications. However, there is no guarantee that interference will not occur in a particular installation. If this equipment does cause harmful interference to radio or television reception, which can be determined by turning the equipment off and on, the user is encouraged to try and correct the interference by one or more of the following measures:

1. Reorient or relocate the receiving antenna.
2. Increase the separation between the equipment and receiver.
3. Connect the equipment into an outlet on a circuit different from that to which the receiver is connected.
4. Consult the dealer or an experienced radio/TV technician for help.

Modifications to this product not authorized by LaCie could void the FCC & Industry Canada regulations and negate your authority to operate the product.

## WEE



This symbol on the product or on its packaging indicates that this product must not be disposed of with your other household waste. Instead, it is your responsibility to dispose of your waste equipment by handing it over to a designed collection point for the recycling of waste electrical and electronic equipment. The separate collection and recycling of your waste equipment at the time of disposal will help to conserve natural resources and ensure that it is recycled in a manner that protects human health and the environment. For more information about where you can drop off your waste equipment for recycling, please contact your local city office, your household waste disposal service, or the shop where you purchased the product.

## TRADEMARKS

Apple, Mac, Time Machine, and Macintosh are registered trademarks of Apple Computer, Inc. Microsoft, Windows XP, Windows Vista, and Windows 7 are registered trademarks of Microsoft Corporation. Other trademarks mentioned in this manual are the property of their respective owners.

## LICENSES AND FREE SOFTWARE

Your LaCie product ships with copyrighted software that are licensed under the GPL, AFL, Apache, Apple, BSD, GNU LGPL, MIT, OpenLDAP, OpenSSL, PHP, Python, and Creative Common. It also includes free software, the source code for which can be downloaded from the LaCie website: [www.lacie.com/support/](http://www.lacie.com/support/)

Based on TrueCrypt, freely available at <http://www.truecrypt.org/>

Portions of this software are based in part on the works of the following people: Paul Le Roux, Bruce Schneier, John Kelsey, Doug Whiting, David Wagner, Chris Hall, Niels Ferguson, Lars Knudsen, Ross Anderson, Eli Biham, Joan Daemen, Vincent Rijmen, Phillip Rogaway, Hans Dobbertin, Antoon Bosselaers, Bart Preneel, Paulo Barreto, Brian Gladman, Wei Dai, Peter Gutmann, and many others.

This list of licenses can evolve over time and can be found on the user interface under the heading Credits.

## CANADA COMPLIANCE STATEMENT

This Class A digital apparatus meets all requirements of the Canadian Interference-Causing Equipment Regulations.

## JAPAN COMPLIANCE STATEMENT

This is a Class A product based on the standard of the Voluntary Control Council for Interference from Information Technology Equipment (VCCI). If this is used near a radio/TV receiver, it may cause radio interference. Install the equipment according to the manual.

## MANUFACTURER'S DECLARATION FOR CE CERTIFICATION



We, LaCie, solemnly declare that this product conforms to the following European standards:  
Electromagnetic Compatibility Directive (2004/108/EC); Low-Voltage Directive: 2006/95/EC