

ADJUSTABLE TAPER CONTROL

Unlike levers on professional clippers that are positioned on the side, the Conair taper control is positioned at the back of the unit. The taper level functions for both the clipper and trimmer blade, so you can hold the clipper in your hand and adjust the lever at the same time...while you're clipping/trimming. This taper control eliminates the need in some situations for an attachment comb, because it lets you gradually adjust the closeness of the cut. For the closest cut and the shortest hair, push taper control up as far as it will go to position #5. To increase cutting length, slowly push control down. If you push to the lowest position #1, it will leave hair about the same length as the short attachment comb.

Because a different cutting edge is used in each setting, the taper lever lengthens the life of your blades. Packed-in hair can slow down any clipper. To remove it without removing the blades, take your cleaning brush and brush the hair from the blades. If you do this after every clipping, especially with heavy hair cutting, the blades should remain free of cut hair. If clipper stops cutting and this action doesn't help, try loosening the blades to remove the hair.

Any other servicing should be performed by an authorized service representative. The appliance has no user-serviceable parts. The product is for household use (see note).

If clipper stops cutting, check to see if there is a clump of hair lodged between the blades. If that is the problem, unplug the clipper and then loosen the blades to remove the hair.

If the clipper stops cutting, but does not stop running, you will need to check the blades.

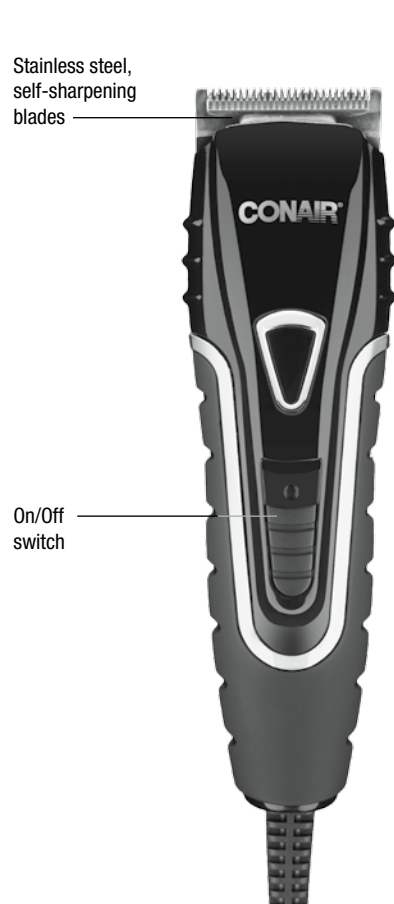
For new blades, send check or money order for \$6.50, which includes postage and handling, to:

Conair Corporation
150 Milford Rd.
East Windsor, NJ 08520

NOTE: Never pull on the clipper cord. Never twist or wrap the cord around the clipper. Lay it flat with the cord coiled up when not in use.

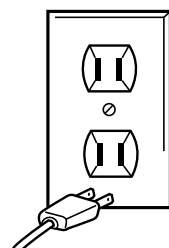
STORAGE: When not in use, your clipper should be disconnected, allowed to cool and stored in a safe, dry location, out of reach of children.

Any other servicing should be performed by an authorized service representative. This appliance has no user-serviceable parts. This appliance is for household use.



**WARNING:
IF YOU THINK
THE POWER IS OFF
WHEN THE SWITCH
IS OFF,
YOU'RE WRONG.**

KEEP AWAY FROM WATER



Everyone knows that electricity and water are a dangerous combination. But did you know that an electric appliance is still electrically live even if the switch is off? If the plug is in, the power is on. So when you are not using your appliances, keep them unplugged.

**ALWAYS UNPLUG
SMALL APPLIANCES**

LIMITED FIVE-YEAR WARRANTY (U.S. AND CANADA ONLY)

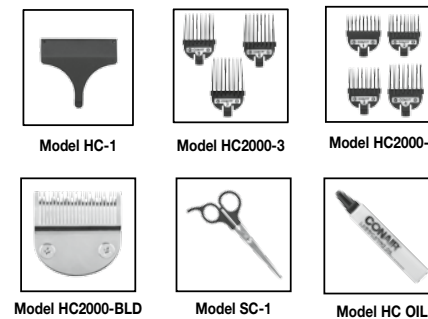
Conair will repair or replace (at our option) your unit free of charge for 60 months from the date of purchase if the appliance is defective in workmanship or materials.

To obtain service under this warranty, return the defective product to the service center listed on back, together with your purchase receipt and \$3.00 for postage and handling. California residents need only provide proof of purchase and should call 1-800-3-CONAIR for shipping instructions. In the absence of a purchase receipt, the warranty period shall be 60 months from the date of manufacture.

ANY IMPLIED WARRANTIES, OBLIGATIONS, OR LIABILITIES, INCLUDING BUT NOT LIMITED TO THE IMPLIED WARRANTY OF MERCHANTABILITY AND FITNESS FOR A PARTICULAR PURPOSE, SHALL BE LIMITED IN DURATION TO THE 60-MONTH DURATION OF THIS WRITTEN, LIMITED WARRANTY. Some states do not allow limitations on how long an implied warranty lasts, so the above limitations may not apply to you.

IN NO EVENT SHALL CONAIR BE LIABLE FOR ANY SPECIAL, INCIDENTAL, OR CONSEQUENTIAL DAMAGES FOR BREACH OF THIS OR ANY OTHER WARRANTY, EXPRESS OR IMPLIED, WHATSOEVER. Some states do not allow the exclusion or limitation of special, incidental, or consequential damages, so the above limitation may not apply to you.

This warranty gives you specific legal rights, and you may also have other rights, which vary from state to state.



HAIRCUT KIT REPLACEMENT PARTS & ACCESSORIES ORDER FORM

Pricing in effect through December 31, 2020. Orders postmarked after this date will be accepted, and the customer will be notified if pricing has changed.

ITEM	PART #	PRICE	QUANTITY	AMOUNT
Clipper Blade	HC2000-BLD	\$6.50		
4 Comb Attachments: 1/8", 1/4", 3/8", 1/2"	HC2000-4	\$5.00		
3 Comb Attachments: 5/8", 3/4", 7/8"	HC2000-3	\$5.00		
Lubricating Oil (pkg. of 3 tubes)	HC OIL	\$1.00		
Barber Scissors	SC-1	\$2.00		
Blade Guard	HC-1	\$1.00		

Subtotal _____
Sales Tax* _____
TOTAL _____

Enclose check or money order made payable to Conair. (We cannot accept cash, stamps or C.O.D. orders.) *CT, IL, AZ, and PA residents should add applicable state sales tax. Minimum order of \$10.00 or a \$2.00 handling charge will be added to order.

All prices include handling and return postage. Prices are subject to change without notice. Prices are valid only for shipments within the continental United States. Please allow 4-6 weeks for delivery.

To avoid delays, please print clearly. We must have a street address, as UPS cannot deliver to a P.O. Box.

NAME _____
ADDRESS _____ APT. _____
CITY _____ STATE _____ ZIP _____
TELEPHONE () _____ (We call only if we have a question about your order.)

For information on other Conair® haircut kit parts call: 1-800-3-CONAIR.

Mail to:
Conair Corporation
Service Department
150 Milford Road
East Windsor, NJ 08520-9730

BARBERSHOP SERIES



Instruction Booklet

For your safety and continued enjoyment of this product, always read the instruction booklet carefully before using.



Model HC2000

IMPORTANT SAFETY INSTRUCTIONS

When using electrical appliances, especially when children are present, take basic safety precautions, including the following:

READ ALL INSTRUCTIONS BEFORE USING

KEEP AWAY FROM WATER FOR HOUSEHOLD USE ONLY

DANGER — Any appliance is electrically live, even when the switch is off. To reduce the risk of death or injury by electric shock:

1. **Unplug this appliance before cleaning.**
2. Do not place or store appliance where it can fall or be pulled into a tub or sink.
3. Do not use while bathing or in the shower.
4. Do not place in, or drop into water or other liquids.
5. Do not reach for an appliance that has fallen into water. **Unplug it immediately.** For dry location use only. Do not expose to liquids, vapor or rain.
6. Always unplug this appliance from electrical outlet immediately after using.

WARNING

— To reduce the risk of burns, electric shock, fire, or injury to persons:

1. **This appliance should never be left unattended when plugged in.** Do not pull, twist, or wrap line cord around appliance.
2. This appliance should not be used by, or near children or individuals with certain disabilities.
3. Use this appliance only for its intended purpose as described in this manual. Do not use attachments not recommended by the manufacturer. Do not use an extension cord to operate this appliance.
4. **Never operate this appliance if it has a damaged cord or plug, if it is not working properly or if it has been dropped or damaged, or dropped into water.** Return the appliance to a service center for examination and repair.
5. Keep the cord away from heated surfaces.
6. Never drop or insert any object into any opening on this appliance.
7. Do not place appliance on any surface while it is operating.
8. Do not use this appliance with a damaged or broken comb or with teeth missing from the blades as injury may occur. Before use, make certain blades are aligned properly.
9. Do not use outdoors or operate where aerosol (spray) products are being used or where oxygen is being administered.
10. Never operate the appliance with the air openings blocked or while on a soft

surface, such as a bed or couch, where the air openings may be blocked. Keep the air openings free of lint, hair, and other debris.

11. Always attach plug to appliance first, then to outlet. To disconnect, turn all controls to OFF, then remove plug from outlet.

12. This appliance is not a toy. Keep away from children.

SAVE THESE INSTRUCTIONS OPERATING INSTRUCTIONS

This appliance is intended for household use. Use on alternating current (AC) 120V AC, 60 hertz only.

This appliance has a polarized plug (one blade is wider than the other). As a safety feature, this plug will fit in the outlet only one way. If the plug does not fit fully in the outlet, reverse the plug. If it still does not fit, contact a qualified electrician. Do not attempt to defeat this safety feature.

Your new Conair® haircut kit has everything you need to achieve professional haircuts at home. It features a powerful clipper with adjustable taper control, a no-slip grip® and self-sharpening stainless-steel blades. Also included are 9 comb attachments for different hair lengths, barber comb, barber scissors, barber cape, a soft storage case, lubricating oil, and a blade guard for easy maintenance of the clipper blades.

OILING THE BLADES (OIL INCLUDED)

1. Oil the clipper blades once a month
2. Turn the clipper ON
3. Hold and point the blades downward
4. Spread one drop of oil across the blades
5. Turn the clipper OFF and wipe away any excess oil

KEEP OIL AWAY FROM CHILDREN.

THE CONAIR GUIDE TO CUTTING HAIR AT HOME

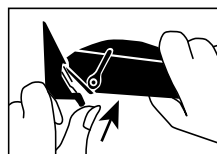
Before you start:

1. Inspect your clipper. Make sure it's free of hair and dirt, properly oiled and running smoothly.
2. Place the barber cape or a towel around the neck of the person whose hair is to be cut.
3. Seat the person so that his or her head is at your eye level. This gives you greater visibility and control.
4. First, comb hair until it's tangle free. Then hold clipper in a comfortable grip. Now you're ready to cut.

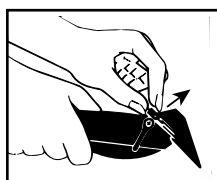
MEDIUM TO LONG CUT

To begin, cut only a small amount of hair until you become used to the length each attachment leaves the hair. Try the longest attachment on the clipper first. If you want a shorter cut, you can then use shorter combs.

- Short comb attachment (number 1) cuts hair to 1/8" (3mm).
- Medium-Short comb attachment (number 2) cuts hair to 1/4" (6mm).
- Medium-Long comb attachment (number 3) cuts hair to 3/8" (10mm).
- Long comb attachment (number 4) cuts hair to 1/2" (13mm).
- Long comb attachment (number 5) cuts hair to 5/8" (16mm).
- Long comb attachment (number 6) cuts hair to 3/4" (19mm).
- Long comb attachment (number 7) cuts hair to 7/8" (22mm).
- Left ear attachment comb lightly tapers over left ear.
- Right ear attachment comb lightly tapers over right ear.



Attach combs by holding them teeth up, then snapping onto the bottom of the clipper blade.



To remove comb attachments, place index finger and thumb as illustrated; then pull out and up.

NOTE: Never push or shove the clipper through the hair to make it move more quickly. Professional experience shows that the clipper works most efficiently when it cuts through the hair at its own speed.

To begin cutting hair:

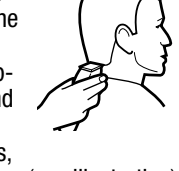
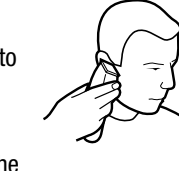
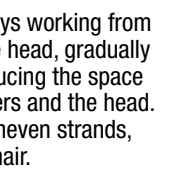


1. The hair should be combed in its natural direction.
2. Using the longest comb attachment, trim sides from the bottom upward. Hold clipper lightly against the hair with teeth of the comb attachment pointing upward, yet flat against the head. Gradually lift the clipper upward and outward through the hair, trimming just a little at a time. Repeat around sides and back of head. If you want hair to be even shorter:
 - A) Apply more pressure to the head with the comb attachment that is in place. This takes a little practice, of course.
 - OR
 - B) Just switch to a shorter comb attachment.

Remember, it's better to leave too much hair than too little. For longer hair on top, use the barber comb and lift hair on the top of the head, cutting over the comb. Or hold the hair between the fingers and cut to desired length. Always working from the front to the back of the head, gradually cut the hair shorter by reducing the space between the comb or fingers and the head. Comb often to check for uneven strands, and to get rid of trimmed hair.

OUTLINING

Outlining requires no attachments. Comb hair into the desired style. Position the clipper between the sideburns and the ear (see illustration), making sure the corner edge of the blade is against the hairline. With the outline of the hair as your guide, slowly move the clipper over, around and behind the ears. For the back of the neck and the sideburns, hold the clipper upside down (see illustration) and, holding it against the skin at the length desired, move the clipper downward.



STOP. COMB. CHECK.

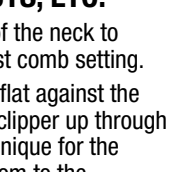
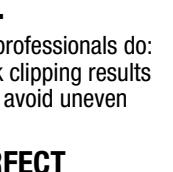
For best results, do as the professionals do: Comb hair often, and check clipping results as you comb. This way you avoid uneven sides, bangs, neckline, etc.

SHORT CUTS TO PERFECT FLATTOPS, CREW CUTS, ETC.

Always cut from the back of the neck to the crown, using the longest comb setting. Hold the comb attachment flat against the head and slowly move the clipper up through the hair. Use the same technique for the sides, cutting from the bottom to the upper side of the head.

For the front to the crown, cut the hair against the direction in which it grows. Then even it up with the sides.

For a flattop, use the flat comb, not the comb attachment. Just cut hair on top of the head over flat comb (see illustration).



USER MAINTENANCE CARE OF YOUR CLIPPERS

Detachable Blade Set

This clipper comes with a detachable blade set. To remove the blades, follow these steps:

1. Hold the front part of the clipper with your thumb pressing on the blade and place another hand against the blade (see Fig. 1)
2. When pressing the blade forward, the blade is detached (see Fig. 2)

TO REPLACE BLADE:

1. Set the Taper Control Button to lowest position "1" (see Fig. 3)
2. Place the blade onto the clipper body by inserting the "Blade Tongue" down below the "Lock Tap" (see Fig. 4)
3. Snap the blade down into position. The blade is now fixed onto the clipper body (see Fig. 5)

