

ASSEMBLY INSTRUCTIONS



MODEL W853.3S 10 PERSON TUNNEL TENT 11' x 16'

SAFETY WARNING - DOs AND DO NOTs

EVERYONE WHO USES THIS TENT SHOULD READ THIS MANUAL AND BECOME FAMILIAR WITH ALL SAFETY WARNINGS AND PRECAUTIONS FOR SAFE USE, ASSEMBLY, CARE, MAINTENANCE, AND STORAGE. KEEP THIS MANUAL SO YOU CAN REFER TO IT LATER.

DANGER CARBON MONOXIDE GAS WILL KILL YOU

Stoves, heaters, grills, lantern, candles, and other fuel-burning devices that burn propane, natural gas, charcoal, kerosene, coal, or other fuels produce a toxic gas called carbon monoxide. Because carbon monoxide gas is invisible, odorless, and colorless, a dangerous level of carbon monoxide gas can accumulate in a tent which cannot be detected by sight, smell, or taste. For these reasons:

- DO NOT use matches, lighters, stoves, heaters, grills, lanterns, candles, cooking equipment, or other fuel-burning devices inside or near a tent.
- DO NOT build fires inside or near a tent.
- DO NOT leave campfires unattended.

Your failure to follow this warning will cause death, serious injury, or permanent disability to you or others.

DANGER PROTECT YOUR CHILDREN

- DO NOT leave children unattended inside a tent or in camp.
- DO NOT allow children to assemble a tent.
- DO NOT allow children to enter or exit a tent except through the door.
- DO NOT allow children to remain in a closed-up tent on hot days.

Your failure to follow this warning will cause death, serious injury, or permanent disability to your children.

WARNING FLAMMABILITY WARNING KEEP ALL FLAME AND HEAT SOURCES AWAY FROM THIS TENT FABRIC

This tent is made with flame resistant fabric which meets CPAI-84 specification. IT IS NOT FIREPROOF. The fabric will burn if left in continuous contact with any flame source. The application of any foreign substance to the tent fabric may render the flame-resistant properties ineffective. Your failure to follow this warning could cause death, serious injury, or permanent disability to you or others.

CAMPING DO'S AND DON'TS DO NOT...

1. Do not pitch tent near open fire.
2. Do not leave campfire unattended.
3. Do not leave children unattended inside a tent.
4. Do not use heating, lighting or cooking equipment with open flames in or near tents.
5. Do not use other than recommended water repellent compounds on your tent.
6. Do not spray the tent with insecticide.
7. Do not store tent on concrete floor.

DO...

1. Always extinguish campfire before leaving area.
2. Exercise care when using electricity and lighting in and near tents.
3. Make certain your tent is properly ventilated in all weather conditions. In extreme weather conditions, snow could obstruct airflow and cause asphyxiation unless cleared frequently.
4. Anchor your tent securely to provide additional security from changing climatic conditions. Snow pegs, skis and/or heavy rocks may be necessary to supplement tent stakes and guy cords.
5. Take your tent down and store properly after camping.

CARE

DO NOT LEAVE YOUR TENT SET UP IN DIRECT SUNLIGHT LONGER THAN NECESSARY. THE SUN'S ULTRAVIOLET (UV) LIGHT DEGRADES ALMOST EVERY FABRIC AND MATERIAL. IF LEFT IN SUNLIGHT FOR PROLONGED PERIODS OF TIME, FABRIC WILL FADE AND WEAKEN. DO NOT STORE TENT ON CONCRETE FLOOR. DO NOT SPRAY THE TENT WITH INSECTICIDE.

Your tent is water repellent, however, it is not waterproof. During heavy rain, some leakage may occur. Keep objects from touching the inside of the tent. Such objects may cause leakage at point of contact. If seam leakage occurs, it can be controlled by applying a seam sealer compound.

EXERCISE CARE WHEN USING ELECTRIC DEVICES IN AND NEAR TENTS.

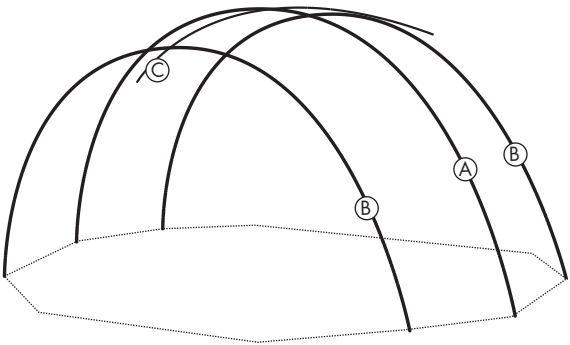
Although our tents and screen houses are constructed to rigid specifications, periods of wind or rain soaking the ground may loosen the stakes and cause the uprights to sink into the ground. This will weaken the rigidity of the overall structure. Water pockets may also form in the roof if the unit is not assembled taut, possibly causing broken frames and torn fabric.

REPLACEMENT PARTS

If you have questions or need to order a part, call 1-800-325-4121 or send an e-mail to contactus@wenzelco.com. Have your model number or part number ready when you call. DO NOT ORDER BY REFERENCE KEY NUMBER.

Send your request for parts to:
Exxel Outdoors, LLC.
6235 Lookout Road
Boulder, CO 80301

KEY NO.	MODEL NO W853.3S, 11'x 16' 10 Person Tent		QTY REQ
	DESCRIPTION	PART NO.	
A	Main Pole	W853.3SM	1
B	Side Pole	W853.3SS	2
C	Ridge Pole	W853.3SR	1
	Complete Frame	W853.3ST	1
	Replacement Fly	W853.3SFL	1
	Guy Rope	A1001	4
	Steel Stake	PIN STAKE	14



ASSEMBLY INSTRUCTIONS

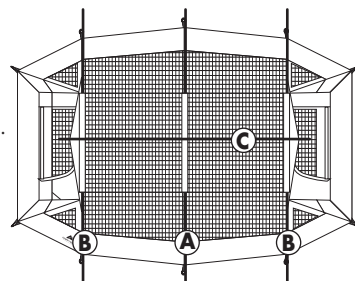


MODEL W853.3S 10 PERSON TUNNEL TENT 11'x 16'

IMPORTANT: WE ADVISE YOU TO ASSEMBLE THE TENT ONCE BEFORE GOING CAMPING TO BECOME FAMILIAR WITH THE ASSEMBLY OF THE TENT.

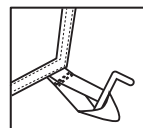
NOTE: PLEASE LOOK AT THE REPLACEMENT PARTS DIAGRAM TO SEE HOW YOUR FRAME IS ASSEMBLED. IT IS RECOMMENDED TO HAVE TWO ADULTS BE INVOLVED IN SET UP.

TO PROLONG THE LIFE OF THE TENT FLOOR, SELECT A LEVEL, CLEAN AREA FOR THE CAMPSITE. TO PREVENT DAMAGE TO THE ZIPPER, UNZIP THE DOOR TO ALLOW AIR TO ENTER THE TENT. TO IMPROVE THE WEATHER RESISTANCE OF YOUR TENT, IT IS ADVISABLE TO USE SEAM SEALER TO COAT ALL EXPOSED SEAMS. YOU SHOULD APPLY ONLY TO THE INSIDE SEAMS OF THE TENT AND UNDERSIDE OF THE TENT FLY. IF APPLIED TO THE OUTSIDE OF SEAMS, DISCOLORATION OF YOUR TENT MAY OCCUR. SEAM SEALER IS AVAILABLE IN THE CAMPING SECTION OF ANY LOCAL SPORTING GOODS STORE.



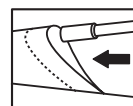
STEP 1: Spread tent out flat, floor side down.

STEP 2: Stake the tent to the ground by inserting tent stakes through the webbing loops at the front and back corners of the tent. Hammer stakes into the ground at a 45° angle, making sure the tent floor is pulled out even and tight.



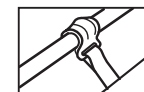
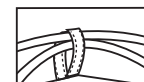
STEP 3: Extend each of the fiberglass frame poles by pulling out each section and placing pole ends into the metal ferrule connectors. You will have 4 fiberglass poles (Refer to the frame drawing on the opposite side of the assembly instructions). The longest pole with metal end ferrules (A) is the main or middle pole. (it is marked with white tape at both ends) The next longest pair of poles, also with metal ends (B) are the side poles. The single pole © with cap ends is the center ridge pole.

STEP 4: Insert the longest tent pole (A) through the sleeve in the middle of your tent. Be sure to put the pole through the fabric loop at the center of the tent.



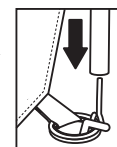
STEP 5: Insert the side poles (B) through the remaining sleeves at front and rear of the tent.

STEP 6: Locate the center ridge pole (C) and slide it through the fabric loop at the center of the tent. The ridge pole runs from front to back across the roof. **Please make sure the ridge pole goes over the other three poles.** Locate the pole pockets that are attached to the tent above each door. Place one end of the pole into one pocket. Go to the other end of the tent, flex the fiberglass pole, and place the end into the corresponding pole pocket. Clip the plastic hooks on the roof of the tent to the ridge pole.

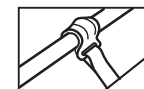


STEP 7: Go to one side of the tent and place the ferrules at the ends of the poles onto the pins located on the corresponding rings at the base of the tent. The tent poles should follow the seam lines of the tent.

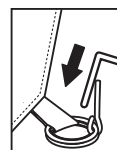
STEP 8: Go to the opposite side of the tent. Working from front to back raise the tent by flexing the poles into an arch and placing the ends of the poles onto the pins located on the rings at the base of the tent.



STEP 9: Clip the plastic hooks to the fiberglass frame poles.



STEP 10: Finish staking the tent to the ground by inserting stakes through the rings at the base of the tent. Hammer stakes into the ground at a 45° angle, making sure the tent floor is pulled out tight.



Tent should appear as shown.



⚠ WARNING: Elastic cords can snap back and hit your eye. To reduce the risk of injury to you and others:

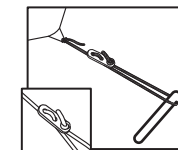
- Keep your body and face clear.
- Do not over stretch elastic cords.
- Maintain firm grip on hook.
- Pull the hook toward you; if it slips it will spring away from you.
- Make sure hook is fully clipped to tent before releasing.
- Wear protective eyewear during tent assembly.

Your failure to follow this warning could cause serious injury or permanent disability.

STEP 11: Unfold fly and place over tent so the grey zipper covers on each side of the fly are located over the middle pole. Attach the fly to the tent by hooking the S-hooks located on each side of the fly to the rings at the base of the tent. Fasten the Velcro fasteners sewn to the edge of the fly around the tent poles at all locations.



STEP 12: For extra stability, there are guy ropes attached to the fly. Extend the guy ropes and make a loop at the opposite end of the guy rope by using the slider (as shown) and place loop over a tent stake. Adjust the slider to make the guy rope tight and stake to the ground.



Tent should appear as shown.



NOTE: Toggles and loops are attached to the fly to allow for multiple ventilation options in good weather. Please refer to the packaging and online videos.

NOTE: Make sure tent is clean and dry before storing. To take down tent, follow steps above in reverse order. Be sure to leave doors and windows unzipped. Place stakes into stake bag and poles into pole bag, which are provided. The tent should be folded into equal parts toward the center of the tent to distribute the bulk. Fold fly and lay fly and pole bag on top of tent at the end opposite the door. Start a small tight roll, the width of the carry bag, and roll tent toward door to allow air to escape. Once rolled, tie a string around tent to hold into place. Place tent, frame and stakes into carry bag for storage.