

SHARP[®]



**OFFICIAL
HDTV**

AQUOS[®]



LC-52SE94U



AQUOS

High Performance. High Style.

The “Special Edition” AQUOS® SE94 series is designed to offer a premium LCD TV experience, including ground-breaking design, industry-leading picture quality, and custom web-based content to enhance the viewing experience.

Sleek. Thin. Amazing.



46" (45 63/64" DIAGONAL)
CLASS LC-46SE94U

52" (52 1/32" DIAGONAL)
CLASS LC-52SE94U

65" (64 33/64" DIAGONAL)
CLASS LC-65SE94U

Cornerstone Design

The "Special Edition" AQUOS® SE94 series establishes a new standard for large-screen flat-panel LCD TVs. With a unique "Cornerstone" and Slim-line Design and textured cabinet, the SE94 is truly elegant. The series features Sharp's 10-bit full-HD Advanced Super View/Black TFT Panel and introduces an astonishing 27,000:1 Dynamic Contrast Ratio for simply amazing picture quality, extraordinary color and the blackest blacks. The AQUOS Net Feature delivers custom web content through an Ethernet jack, and 120Hz frame rate conversion produces the ultimate in fast-motion image processing on LCD TV's. The SE94s' recessed bottom-mounted speakers are detachable and the included table stand removes easily for wall-mounting applications.

The AQUOS LINK function enables convenient control of an AQUOS BD-HP20U Blu-ray Disc™ player via HDMI™ input using the AQUOS TV remote.



Key Features: SE94 Series

Cornerstone Design

Full HD 1080p (1920 x 1080) Resolution

Next-generation 10-bit ASV LCD Panel

Built-in ATSC / QAM / NTSC Tuners

27,000:1 Dynamic Contrast Ratio*1

4ms Response Time

AQUOS Net

Fine Motion Advanced 120 Hz Frame Rate Conversion

Five-wavelength Backlight System

Multi-Pixel Technology

High Brightness (450 cd/m²)

Three HDMI™ Inputs with x.v.Color

Detachable Speakers

PC Input and RS-232C

15W x 2 Audio Output

176° Viewing Angles

60,000-hour Lamp Life

Side Terminals

Ethernet Terminal

Enhanced Black Level

Textured Black Cabinet

AQUOS
LINK



AQUOS

CORNERSTONE
DESIGN

SPECIAL
EDITION

Advanced AQUOS® LCD TV technology

Great style and performance do not just happen. It takes a commitment to quality, an incredible team of professionals and a vision for innovation. Sharp, a global leader in LCD televisions, brings all this and more to LCD TV technology, continually raising the bar for outstanding quality and high performance.

AQUOS Net

Sharp brings the power of home networking to the TV screen via AQUOS Net. AQUOS Net is a revolutionary technology that delivers Internet content and remote diagnostics to AQUOS LCD TVs at the touch of a button.

AQUOS Net features and services, available on SE94 series models, are accessible through the Ethernet jack. Users can create and configure “widgets” to check useful information, such as local weather, viewable in full or split screen, with the touch of a button on the AQUOS TV remote control. Additional content will be added to AQUOS Net, which will allow users access to local weather forecasts and weather alerts; stock quotes and numerous detailed charts and graphics about individual stocks; daily comic strips, and AQUOS Gallery, which allows users to view beautiful, 1080p high-resolution still images in a slideshow format.



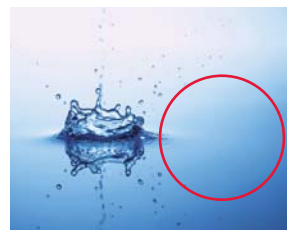
AQUOS Advantage Live provides real-time customer assistance from our AQUOS support experts, including the ability to adjust TV settings remotely upon request.

Next-Generation Advanced Super View (ASV) LCD Panel

Sharp's innovative LCD panel technology, Advanced Super View panels provide pure whites, deep blacks and a vivid range of color. The panel provides a dynamic contrast ratio up to 27,000:1 and LCD TV industry leading 4ms response time for true film-like smoothness. The addition of a 10-bit panel on certain models increases the color capability from more than 16 million colors to more than one billion colors. This means richer color and a more accurate, more brilliant depiction of the world on screen.



8-bit Panel
More than 16 Million Colors



10-bit Panel
More than 1 Billion Colors

Five-Wavelength Backlight System

Sharp vastly improves natural color reproduction with the development of its four-wavelength backlight system, adding a remarkably vivid crimson red to the palette—and changing the way LCD TV is viewed. The SE94 series takes the technology a step further with a five-wavelength backlight system, adding an even deeper green. The result is more accurate reproduction, especially of nature scenes.



Conventional
Backlight System



Five-Wavelength
Backlight System

120Hz Fine Motion Advanced

The SE94 Series uses 120Hz Fine Motion Advanced Frame Rate Conversion as a way to help improve picture quality. This increases the display image to 120 frames per second, doubling the conventional 60 frames per second. Sharp uses a unique algorithm to help smooth edges on moving objects such as a swinging baseball bat or a speeding motorcycle. By creating new images and filling the gaps, the motion is smoother and sharper.

60Hz

Standard 60Hz LCDs often produce a visible blur between frames due to an information gap.



1

Information Gap



2

Information Gap



3

60Hz = 60 frames per second

SEE MORE OF THE ACTION

120Hz

Sharp's Fine Motion Advanced 120Hz technology doubles the frame rate at which the panel is driven, reducing blur and providing a smoother transition of fast-moving scenes.



1



2



3



4



5

120Hz = 120 frames per second



Shown with optional stand

108" (107 17/32" DIAGONAL)
CLASS LC-108D1U



5' 5/8"

Bringing the world closer: The world's largest full HD LCD Display.

Introducing the AQUOS® LC-108D1U, with a groundbreaking size class in the LCD industry. This 108-inch Class (107 17/32" Diagonal) LCD screen, which measures 53 3/32-inch high by 94 7/64-inch wide, features an Advanced Super View/Black TFT full-HD LCD panel manufactured at Sharp's Kameyama Plant No. 2, the first plant in the world to use 8th generation glass substrates. With this development, Sharp demonstrates that it is possible to produce LCDs in screen size classes ranging from 19-inch Class (18 61/64" Diagonal) to super-large sizes such as the 108-inch Class (107 17/32" Diagonal), and that LCD is the predominant display device in the flat-panel market, which is projected to continue its dramatic growth into the future.

Key Features: LC-108D1U

Full HD 1080p (1920 x 1080) Resolution

ASV Technology/Black TFT LCD Panel

Full HD (1920 x 1080) Resolution

6000:1 Dynamic Contrast Ratio*1

6ms Response Time

HCFL Backlight System

Multi-Pixel Technology

Three HDMI™ Inputs

DVI-I Input for PC

RS-232C

BNC Component Input

176° Viewing Angles

Side Terminals

High Gloss Black Cabinet

Optional Stand

AQUOS®



The depth of color is breathtaking.

Only Sharp can bring you the most advanced high-definition TV technology and picture available—and package it in this beautiful Slim-line Design frame and cabinet. Considerably lighter and thinner than our previous LCD TVs, the D64 series leads the field as Sharp continually advances its LCD TV technology in key specifications: Full HD 1080p, very high contrast ratio, fast pixel response time and multiple HDMI™ inputs.



37" (37" DIAGONAL)
CLASS LC-37D64U

46" (45 63/64" DIAGONAL)
CLASS LC-46D64U

65" (64 17/32" DIAGONAL)
CLASS LC-65D64U

32" (31 35/64" DIAGONAL)
CLASS LC-32D64U

42" (42 1/64" DIAGONAL)
CLASS LC-42D64U

52" (52 1/32" DIAGONAL)
CLASS LC-52D64U



LC-42D64U

The D64 series with its space-saving and elegant design is the thinnest line of AQUOS® LCD TVs ever built. Its narrower frame means more picture in less space: With less border around the screen, you see even more of the remarkable picture. You'll delight in the D64's superior features: Full HD 1080p (a 1920 x 1080-pixel panel) resolution produces a crisp picture, and a 10,000:1 dynamic contrast ratio with 4ms response time (6ms on LC-32D64U and LC-37D64U) delivers amazingly accurate picture quality. High-efficiency backlight, high-performance speakers and built-in ATSC/QAM/NTSC tuners all hit the mark, as do the versatile connections: two or more HDMI™ inputs, RS-232C for control, PC input, plus component and composite terminals. The AQUOS LINK function enables convenient control of an AQUOS BD-HP20U Blu-ray Disc™ player via HDMI™ input using the AQUOS TV remote.

Whether in a 32-inch Class (31 35/64" Diagonal) up to a breathtaking 65-inch Class (64 17/32" Diagonal) model, the AQUOS D64 is a beautiful choice.

Key Features: D64 Series

Space-saving Slim-line Design

Full HD 1080p (1920 x 1080) Resolution

ASV Technology/Black TFT LCD panel

Built-in ATSC / QAM / NTSC tuners

10,000:1 Dynamic Contrast Ratio*1

4ms Response Time*3

6ms Response Time*3 on LC-37D64U and LC-32D64U

Four-wavelength Backlight System

Multi-Pixel Technology

High Brightness (450 cd/m²)

Three HDMI™ Inputs (2 on LC-37D64U and LC-32D64U)

Bottom-mounted, Recessed Speakers

PC Input and RS-232C

15W x 2 Audio Output

10W x 2 Audio Output on LC-37D64U and LC-32D64U

176° Viewing Angles

60,000-hour Lamp Life

Side Terminals

High-gloss Black Cabinet



Thin Profile &
Easy Access
Side Terminals

AQUOS®

**FULL
HD 1080P**

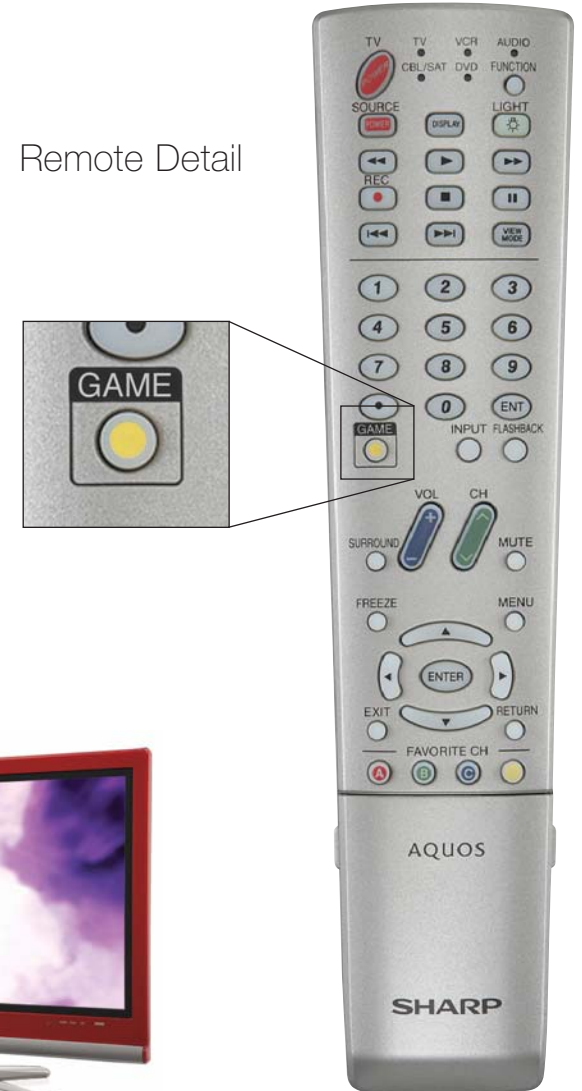
**AQUOS
LINK**



Game players' delight. Choose your color.

The AQUOS® LC-32GP3U—in a choice of glossy black, white or red cabinets—is a dream come true for game players. Optimized for today's state-of-the-art video games, this second-generation LCD-TV series features a unique Vyper Drive game mode that eliminates any perceptible lag between video game and TV. Side-mounted terminals provide easy connections, quickly activated by the custom remote control's innovative "Game" button. Subwoofer audio output adds strong bass sound for a powerful gaming experience. Incredible 6ms response time and 10,000:1 Dynamic Contrast Ratio combine with Full HD1080p resolution for positively awesome picture quality. The AQUOS LINK function enables convenient control of an AQUOS BD-HP20U Blu-ray Disc™ player via HDMI™ input using the AQUOS TV remote.

Remote Detail



32" (31 35/64" DIAGONAL)
CLASS LC-32GP3U-B

32" (31 35/64" DIAGONAL)
CLASS LC-32GP3U-W

32" (31 35/64" DIAGONAL)
CLASS LC-32GP3U-R



LC-32GP3U-R

Key Features: LC-32GP3U

- Space-saving Slim-line Design with Swivel Stand
- Full HD 1080p (1920 x 1080) Resolution
- ASV Technology/Black TFT LCD Panel
- Built-in ATSC / QAM / NTSC Tuners
- Vyper Drive Game Mode
- Side Terminals for Easy Game Connections
- Custom Remote Control with Game Access Button
- Subwoofer Audio Output
- 10,000:1 Dynamic Contrast Ratio*1
- 6ms Response Time
- Four-wavelength Backlight System
- Multi-Pixel Technology
- High Brightness (450 cd/m²)
- Three HDMI™ Inputs
- PC Input and RS-232C
- Available in Glossy Black, White or Red

AQUOS®



AQUOS
LINK



Rear terminals



Side terminals



Key Features: D44 Series

Space-saving Slim-line Design

1366 x 768 Pixels Resolution

ASV Technology/Black TFT LCD Panel

Built-in ATSC / QAM / NTSC Tuners

7500:1 Dynamic Contrast Ratio*

6ms Response Time

High Brightness (450 cd/m²)

Two HDMI™ Inputs

PC Input

176° Viewing Angles

High-gloss Black Cabinet

AQUOS®



Big features for any size room.

At home on a TV stand or wall mounted, the D44 series comes in 32-inch (31 1/2" Diagonal) and 37-inch (37" Diagonal) screen size classes—letting you bring stylish Slim-line Design HDTV to any room. Accented by a high-gloss piano-black finish, this winning design offers many inputs and outputs including a PC input to turn your TV into a computer monitor.



LC-32D44U



32" (31 1/2" DIAGONAL)
CLASS LC-32D44U

37" (37" DIAGONAL)
CLASS LC-37D44U

Small space. Big Features.

Good things definitely come in small packages. The LC-19D45U is ideal on a TV stand, mounted under a cabinet or on a wall. This HDTV features a stylish, high-gloss piano-black finish and Advanced Super View LCD panel for superior viewing angles and accurate color reproduction. The numerous inputs and digital audio output make this HDTV larger than life in its ability to coordinate with other components. The remote includes an illuminated digital clock and kitchen timer with alarm so it can be magnetized and attached to metal surfaces.



Key Features: LC-19D45U

- Space-saving Slim-line Design
- True 16:9 Aspect Ratio
- 1366 x 768 Pixels Resolution
- 7500:1 Dynamic Contrast Ratio*1
- Optical Picture Control
- Built-in ATSC / QAM / NTSC Tuners
- HDMI™ Input
- PC Input
- Advanced Picture Settings for Color Control
- 176° Viewing Angles
- Timer/Clock Remote
- High-gloss Black Cabinet



LC-19D45U

AQUOS®



Key Features: LC-46SB54U

Space-saving Slim-line Design

Full HD 1080p (1920 x 1080) Resolution

ASV Technology/Black TFT LCD Panel

Built-in ATSC / QAM / NTSC Tuners

7500:1 Dynamic Contrast Ratio*1

6ms Response Time

High Brightness (450 cd/m²)

Two HDMI™ Inputs

Bottom-mounted, Recessed Speakers

PC Input and RS-232C

10W x 2 Audio Output

176° Viewing Angles

60,000-hour Lamp Life*3

Side Terminals

High-gloss Black Cabinet

Slim and versatile.

For a versatile high-definition solution with the distinctive Slim-line Design, the LC-46SB54U Full HD 1080p LCD TV features a high-performance Advanced Super View LCD panel for high brightness, a 7500:1 Dynamic Contrast Ratio, and wide viewing angles.



46" (45 63/64" DIAGONAL)
CLASS LC-46SB54U





LC-46SB54U



LC-26DV24U

Key Features: DV24 Series

Built-in Side-loading DVD player

1366 x 768 Pixels Resolution
(1440 x 900 on LC-19DV24U)

Active Matrix LCD (a-Si TFTLCD)

Built-in ATSC / QAM / NTSC Tuners

800:1 Native Contrast Ratio
(1000:1 on LC-19DV24U)

8ms Response Time (5ms on LC-19DV24U)

High Brightness 500 cd/m²
(300 cd/m² on LC-19DV24U)

HDMI™ Input

Bottom-mounted Speakers

PC Input

60,000-hour Lamp Life*³
(50,000-hour on LC-19DV24U)

High-gloss Black Cabinet



LC-19DV24U

DVD teams up with HDTV.

This latest HDTV/DVD combination unit offers a space-saving, all-in-one solution that is perfect for any room in the home. In addition to a built-in progressive scan side-loading DVD player, the LC-26DV24U delivers rich black tones and produces crisp images with high contrast ratios. High brightness levels, a hallmark of Sharp's innovation, create clear, vibrant pictures and true-to-life color clarity in most lighting conditions. Sharp's award-winning LCD technology makes the DV24 a perfect combo unit.

19" (18 61/64" DIAGONAL)
CLASS LC-19DV24U



26" (26" DIAGONAL)
CLASS LC-26DV24U

The SB24 Series.

Sharp's SB24 Series of HDTV LCD TVs provide a slim, versatile high-definition television solution with a distinctive design. The SB24 models are available in 26-inch (26" Diagonal), 32-inch (31 25/64" Diagonal) and 37-inch (37" Diagonal) screen size classes. All models feature a high-performance LCD panel for high brightness, a high contrast ratio, low-reflection glare protection and wide viewing angles, as well as Sharp's award-winning LCD technology.



32" (31 35/64" DIAGONAL)
CLASS LC-32SB24U

37" (37" DIAGONAL)
CLASS LC-37SB24U



26" (26" DIAGONAL)
CLASS LC-26SB24U

Key Features: SB24 Series

Space-saving Slim-line Design
(LC-37SB24U and LC-32SB24U only)

1366 x 768 Pixels Resolution

ASV Technology/Black TFT LCD Panel
(LC-37SB24U and LC-32SB24U only)
TN LCD Panel (LC-26SB24U)

Built-in ATSC / QAM / NTSC Tuners

7500:1 Dynamic Contrast Ratio*1
(LC-37SB24U and LC-32SB24U only)

6ms Response Time
8ms on LC-26SB24U

High Brightness (450 cd/m²)
(500 cd/m² on LC-26SB24U)

Two HDMI™ Inputs

PC Input

176° Viewing Angles
160°/150° Viewing Angles on LC-26SB24U

60,000-hour Lamp Life*3

High-gloss Black Cabinet



LC-37SB24U

Key Features: BD-HP20U Blu-ray Disc® Player

Slim Profile Design

Full HD 1080p/24 fps Video Output

HDMI™ Digital Interface

Dolby® Digital Plus and Dolby TrueHD
Decoding Capability

7.1 Ch Digital Audio Output via HDMI™ Connection

AQUOS LINK

Quick Start Mode

AQUOS®

AQUOS LINK



BD-HP20U

Very new school: Blu-ray Disc® video on your AQUOS® LCD TV.

Now you can enjoy the best of 1080p video on your AQUOS HDTV. Especially designed to work with AQUOS LCD TVs, the BD-HP20U AQUOS BD player operates seamlessly via the AQUOS LINK function through the HDMI™ connection. Performing as if it were all one system, the BD-HP20U lets you begin enjoying gorgeous Blu-ray Disc® video in as little as 10 seconds with the touch of a button via the Quick Start feature.* This incredibly versatile player is compatible with a wide variety of formats including BD-ROM/RE/R, DVD video, DVD-RW/R and DVD+RW/R, and also plays audio CDs. The piano-black finish and slim profile design make it the ideal HD source for a large-screen AQUOS LCD TV.

*Quick Start time may vary depending on movie content, type of video connection and type of monitor used.





LC-52SE94U
BD-HP20U



LC-108D1U shown with optional stand and not to scale.

Specifications

Model Number	LC-65SE94U	LC-52SE94U	LC-46SE94U	LC-108D1U
Screen Size	65" Class (64 33/64" Diagonal)	52" Class (52 1/32" Diagonal)	46" Class (45 63/64" Diagonal)	108" Class (107 17/32" Diagonal)
Aspect Ratio	16:9	16:9	16:9	16:9
DTV Capability	HDTV	HDTV	HDTV	HDTV Monitor
LCD Panel	Advanced Super View/Black TFT	Advanced Super View/Black TFT	Advanced Super View/Black TFT	Advanced Super View/Black TFT
Number of Pixels (dots)	1920 x 1080	1920 x 1080	1920 x 1080	1920 x 1080
Built-in DVD Slot	—	—	—	—
AQUOS Net	X	X	X	—
Luminance (cd/m ²)	450	450	450	400
Fine Motion Advanced (120Hz)	X	X	X	—
Dynamic Contrast Ratio ^{*1}	27,000:1	27,000:1	27,000:1	6000:1
Native Contrast Ratio	3000:1	3000:1	2700:1	1200:1
Viewing Angles (H x V)	176° x 176°	176° x 176°	176° x 176°	176° x 176°
Lamp Life ^{*2} (Hours)	60,000	60,000	60,000	53,000
Backlight	5-Wavelength	5-Wavelength	5-Wavelength	HCFL
Tuner Type	ATSC / QAM / NTSC	ATSC / QAM / NTSC	ATSC / QAM / NTSC	—
Multi-pixel Technology	X	X	X	X
Response Time	4ms	4ms	4ms	6ms
Audio Output	15W + 15W	15W + 15W	15W + 15W	15W + 15W
Speakers Location/Type	Bottom/Detachable	Bottom/Detachable	Bottom/Detachable	—
OPC (Optical Picture Control)	X	X	X	X
Terminals				
HDMI™ Input	3 (1080p compatible) - 1 side, 2 rear	3 (1080p compatible) - 1 side, 2 rear	3 (1080p compatible) - 1 side, 2 rear	3
DVI-I with Audio In	—	—	—	1
RGB 15-Pin Input	1	1	1	—
HD Component In	2 (1080p compatible) – 1 side, 1 rear	2 (1080p compatible) – 1 side, 1 rear	2 (1080p compatible) – 1 side, 1 rear	2 (1080p compatible) – 1 side, 1 rear
S-Video In	1	1	1	1
Composite Video In	3 (1 side, 2 rear)	3 (1 side, 2 rear)	3 (1 side, 2 rear)	2 (1 side, 1 rear)
Audio L/R In	4	4	4	4 (1 side, 3 rear)
RF	1	1	1	—
RS-232C 9-Pin In	1	1	1	1
Digital Audio Out	X	X	X	X
Power Source AC Input	120V	120V	120V	200-240V, 50/60Hz
Power Consumption	525W	302W	270W	1130W
Cabinet Color	Textured Black	Textured Black	Textured Black	High Gloss Black
Dimensions				
with stand/with speakers	60 25/64" x 40 3/32" x 16 7/64"	48 29/64" x 33 25/64" x 13 1/2"	43 43/64" x 30 25/64" x 13 1/2"	N/A
(W x H x D)				
with stand/without speakers	60 25/64" x 40 3/32" x 16 7/64"	48 29/32" x 33 25/64" x 13 1/2"	43 43/64" x 30 25/64" x 13 1/2"	101 17/64" x 71 15/32" x 23 5/8"
without stand/with speakers	60 25/64" x 37 49/64" x 3 61/64"	48 29/32" x 31 5/16" x 3 1/2"	43 43/64" x 28 5/16" x 3 1/2"	N/A
without stand/without speakers	60 25/64" x 35 3/4" x 3 61/64"	48 29/32" x 29 1/4" x 3 1/2"	43 43/64" x 26 17/64" x 3 1/2"	101 17/64" x 62 41/64" x 8 1/8"
Net Weight (lb.)				
with stand/with speakers	129.0	78.3	67.2	N/A
with stand/without speakers	123.5	73.9	62.8	551.2
without stand/with speakers	117.9	69.4	58.4	N/A
without stand/without speakers	112.4	65.0	54.0	429.9

*1 With Enhanced Picture Contrast Technology

*2 Typical time for power output decrease of about one half, assuming continuous use with brightness or dimming in standard mode and with a room temperature of 77°F

*3 With Fine Motion Mode on

Screen images in this brochure are simulated.
Design and specifications subject to change without notice.

Specifications



Model Number	LC-65D64U	LC-52D64U	LC-46D64U	LC-42D64U
Screen Size	65" Class (64 17/32" Diagonal)	52" Class (52 1/32" Diagonal)	46" Class (45 63/64" Diagonal)	42" Class (42 1/64" Diagonal)
Aspect Ratio	16:9	16:9	16:9	16:9
DTV Capability	HDTV	HDTV	HDTV	HDTV
LCD Panel	Advanced Super View/Black TFT	Advanced Super View/Black TFT	Advanced Super View/Black TFT	Advanced Super View/Black TFT
Number of Pixels (dots)	1920 x 1080	1920 x 1080	1920 x 1080	1920 x 1080
Built-in DVD Slot	—	—	—	—
AQUOS Net	—	—	—	—
Luminance (cd/m ²)	450	450	450	450
Fine Motion Advanced (120Hz)	—	—	—	—
Dynamic Contrast Ratio ^{*1}	10,000:1	10,000:1	10,000:1	10,000:1
Native Contrast Ratio	2000:1	2000:1	2000:1	2000:1
Viewing Angles (H x V)	176° x 176°	176° x 176°	176° x 176°	176° x 176°
Lamp Life ^{*2} (Hours)	60,000	60,000	60,000	60,000
Backlight	4-Wavelength	4-Wavelength	4-Wavelength	4-Wavelength
Tuner Type	ATSC / QAM / NTSC	ATSC / QAM / NTSC	ATSC / QAM / NTSC	ATSC / QAM / NTSC
Multi-pixel Technology	X	X	X	X
Response Time	4ms ^{*3}	4ms ^{*3}	4ms ^{*3}	4ms ^{*3}
Audio Output	15W + 15W	15W + 15W	15W + 15W	15W + 15W
Speakers Location/Type	Bottom/Fixed	Bottom/Fixed	Bottom/Fixed	Bottom/Fixed
OPC (Optical Picture Control)	X	X	X	X
Terminals				
HDMI™ Input	3 (1080p compatible) – 1 side, 2 rear	3 (1080p compatible) – 1 side, 2 rear	3 (1080p compatible) – 1 side, 2 rear	3 (1080p compatible) – 1 side, 2 rear
DVI-I with Audio In	—	—	—	—
RGB 15-Pin Input	1	1	1	1
HD Component In	2 (1080p compatible) – 1 side, 1 rear	2 (1080p compatible) – 1 side, 1 rear	2 (1080p compatible) – 1 side, 1 rear	2 (1080p compatible) – 1 side, 1 rear
S-Video In	1	1	1	1
Composite Video In	3 (1 side, 2 rear)	3 (1 side, 2 rear)	3 (1 side, 2 rear)	3 (1 side, 2 rear)
Audio L/R In	4	4	4	4
RF	1	1	1	1
RS-232C 9-Pin In	1	1	1	1
Digital Audio Out	X	X	X	X
Power Source AC Input	120V, 60Hz	120V, 60Hz	120V, 60Hz	120V, 60Hz
Power Consumption	525W	290W	256W	215W
Cabinet Color	High Gloss Black	High Gloss Black	High Gloss Black	High Gloss Black
Dimensions (W x H x D)				
with stand/with speakers	60 11/64" x 40" x 15 7/8"	48 45/64" x 32 59/64" x 12 13/16"	43 23/64" x 29 59/64" x 12 13/16"	39 17/32" x 27 7/8" x 12 13/16"
without stand/with speakers	60 11/64" x 37 11/64" x 3 7/8"	48 45/64" x 30 31/64" x 3 3/4"	43 23/64" x 27 31/64" x 3 3/4"	39 17/32" x 25 7/16" x 3 3/4"
without stand/without speakers	—	—	—	—
Net Weight (lb.)				
with stand/with speakers	121.3	74.9	66.1	60.6
with stand/without speakers	—	—	—	—
without stand/with speakers	110.3	62.8	54.0	48.5
without stand/without speakers	—	—	—	—

- Sharp and AQUOS are registered trademarks of Sharp Corporation. Think Green is a trademark of Sharp Electronics Of Canada Ltd.
- All other trademarks and registered trademarks are the property of their respective owners.
- Dolby®, ProLogic, and the double-D symbol are registered trademarks of Dolby Laboratories.

- HDMI™, the HDMI™ logo and High-Definition Multimedia Interface are trademarks or registered trademarks of HDMI™ Licensing, LLC.
- Blu-ray Disc is a registered trademark of the Blu-ray Disc Association.

- Major League Baseball trademarks and copyrights are used with permission of Major League Baseball Properties Inc. TM/© MLBIP 2008.

Specifications



Model Number	LC-37D64U	LC-32D64U	LC-37D44U	LC-32D44U
Screen Size	37" Class (37" Diagonal)	32" Class (31 35/64" Diagonal)	37" Class (37" Diagonal)	32" Class (31 1/2" Diagonal)
Aspect Ratio	16:9	16:9	16:9	16:9
DTV Capability	HDTV	HDTV	HDTV	HDTV
LCD Panel	Advanced Super View/Black TFT	Advanced Super View/Black TFT	Advanced Super View/Black TFT	Advanced Super View/Black TFT
Number of Pixels (dots)	1920 x 1080	1920 x 1080	1366 x 768	1366 x 768
Built-in DVD Slot	—	—	—	—
Vyper Drive Game Mode	—	—	—	—
Luminance (cd/m ²)	450	450	450	450
Fine Motion Advanced (120Hz)	—	—	—	—
Dynamic Contrast Ratio ^{*1}	10,000:1	10,000:1	7500:1	7500:1
Native Contrast Ratio	2000:1	2000:1	1500:1	1500:1
Viewing Angles (H x V)	176° x 176°	176° x 176°	176° x 176°	176° x 176°
Lamp Life ^{*2} (Hours)	60,000	60,000	60,000	60,000
Backlight	4-Wavelength	4-Wavelength	3-Wavelength	3-Wavelength
Tuner Type	ATSC / QAM / NTSC	ATSC / QAM / NTSC	ATSC / QAM / NTSC	ATSC / QAM / NTSC
Multi-pixel Technology	X	X	—	—
Response Time	6ms	6ms	6ms	6ms
Audio Output	10W + 10W	10W + 10W	10W + 10W	10W + 10W
Speakers Location/Type	Bottom/Fixed	Bottom/Fixed	Bottom/Fixed	Bottom/Fixed
OPC (Optical Picture Control)	X	X	X	X
Terminals				
HDMI™ Input	2 (1080p compatible) – 2 rear	2 (1080p compatible) - 2 rear	2	2
DVI-I with Audio In	—	—	—	—
RGB 15-Pin Input	1	1	1	1
HD Component In	2 (1080p compatible) – 1 side, 1 rear	2 (1080p compatible) – 1 side, 1 rear	2	2
S-Video In	1	1	1	1
Composite Video In	3 (1 side, 2 rear)	3 (1 side, 2 rear)	2	2
Audio L/R In	4 (1 side, 3 rear)	4 (1 side, 3 rear)	4	4
RF	1	1	1	1
RS-232C 9-Pin In	1	1	—	—
Digital Audio Out	X	X	1	1
Power Source AC Input	120V, 60Hz	120V, 60Hz	120V	120V
Power Consumption	180W	145W	165W	135W
Cabinet Color	High Gloss Black	High Gloss Black	High Gloss Black	High Gloss Black
Dimensions				
with stand/with speakers	35 23/64" x 25 1/8" x 10 3/4"	30 9/16" x 22 39/64" x 10 3/4"	35 19/32" x 25 3/32" x 9 1/16"	30 9/16" x 22 41/64" x 9 1/16"
(W x H x D)				
with stand/without speakers	—	—	—	—
without stand/with speakers	35 23/64" x 22 7/8" x 3 3/4"	30 9/16" x 20 23/64" x 3 3/4"	35 19/32" x 23 1/32" x 3 3/4"	30 9/16" x 20 19/32" x 3 45/64"
without stand/without speakers	—	—	—	—
Net Weight (lb.)				
with stand/with speakers	45.2	39.7	35.3	29.8
with stand/without speakers	—	—	—	—
without stand/with speakers	38.6	33.0	30.9	25.4
without stand/without speakers	—	—	—	—

*1 With Enhanced Picture Contrast Technology

*2 Typical time for power output decrease of about one half, assuming continuous use with brightness or dimming in standard mode and with a room temperature of 77°F

*3 With Fine Motion Mode on

Screen images in this brochure are simulated.
Design and specifications subject to change without notice.

Specifications



Model Number	LC-32GP3U-B	LC-32GP3U-W	LC-32GP3U-R	LC-19D45U
Screen Size	32" Class (31 35/64" Diagonal)	32" Class (31 35/64" Diagonal)	32" Class (31 35/64" Diagonal)	19" Class (18 1/2" Diagonal)
Aspect Ratio	16:9	16:9	16:9	16:9
DTV Capability	HDTV	HDTV	HDTV	HDTV
LCD Panel	Advanced Super View/Black TFT	Advanced Super View/Black TFT	Advanced Super View/Black TFT	Advanced Super View/Black TFT
Number of Pixels (dots)	1920 x 1080	1920 x 1080	1920 x 1080	1366 x 768
Built-in DVD Slot	—	—	—	—
Vyper Drive Game Mode	X	X	X	—
Luminance (cd/m ²)	450	450	450	300
Fine Motion Advanced (120Hz)	—	—	—	—
Dynamic Contrast Ratio**	10,000:1	10,000:1	10,000:1	7500:1
Native Contrast Ratio	2000:1	2000:1	2000:1	800:1
Viewing Angles (H x V)	176° x 176°	176° x 176°	176° x 176°	176° x 176°
Lamp Life** (Hours)	60,000	60,000	60,000	50,000
Backlight	4-Wavelength	4-Wavelength	4-Wavelength	3-Wavelength
Tuner Type	ATSC / QAM / NTSC	ATSC / QAM / NTSC	ATSC / QAM / NTSC	ATSC / QAM / NTSC
Multi-pixel Technology	X	X	X	—
Response Time	6ms	6ms	6ms	12ms
Audio Output	10W + 10W	10W + 10W	10W + 10W	2W x 2
Speakers Location/Type	Bottom/Fixed	Bottom/Fixed	Bottom/Fixed	Bottom/Fixed
OPC (Optical Picture Control)	X	X	X	X
Terminals				—
HDMI™ Input	3 (1080p compatible) – 1 side, 2 rear	3 (1080p compatible) – 1 side, 2 rear	3 (1080p compatible) – 1 side, 2 rear	1
DVI-I with Audio In	—	—	—	—
RGB 15-Pin Input	1	1	1	1
HD Component In	2 (1080p compatible) – 1 side, 1 rear	2 (1080p compatible) – 1 side, 1 rear	2 (1080p compatible) – 1 side, 1 rear	1
S-Video In	1	1	1	1
Composite Video In	3 (1 side, 2 rear)	3 (1 side, 2 rear)	3 (1 side, 2 rear)	1
Audio L/R In	4 (1 side, 3 rear)	4 (1 side, 3 rear)	4 (1 side, 3 rear)	3
RF	1	1	1	1
RS-232C 9-Pin In	1	1	1	—
Digital Audio Out	1	1	1	1
Power Source AC Input	120V	120V	120V	120V
Power Consumption	145W	145W	145W	45W
Cabinet Color	High Gloss Black	High Gloss White	High Gloss Red	High Gloss Black
Dimensions (W x H x D)	with stand/with speakers 30 61/64" x 23 7/8" x 11 45/64"	with stand/with speakers 30 61/64" x 23 7/8" x 11 45/64"	with stand/with speakers 30 61/64" x 23 7/8" x 11 45/64"	with stand/with speakers 18 3/16" x 14 11/64" x 7 63/64"
	without stand/with speakers 30 61/64" x 21 1/32" x 3 19/32"	without stand/with speakers 30 61/64" x 21 1/32" x 3 19/32"	without stand/with speakers 30 61/64" x 21 1/32" x 3 19/32"	without stand/with speakers 18 3/16" x 12 19/32" x 3 1/32"
	without stand/without speakers —	without stand/without speakers —	without stand/without speakers —	without stand/without speakers —
Net Weight (lb.)	with stand/with speakers 39.7	with stand/with speakers 39.7	with stand/with speakers 39.7	with stand/with speakers 11.9
	without stand/with speakers 33.1	without stand/with speakers 33.1	without stand/with speakers 33.1	without stand/with speakers 10.0
	without stand/without speakers —	without stand/without speakers —	without stand/without speakers —	without stand/without speakers —

- Sharp and AQUOS are registered trademarks of Sharp Corporation. Think Green is a trademark of Sharp Electronics Of Canada Ltd.
- All other trademarks and registered trademarks are the property of their respective owners.
- Dolby®, ProLogic, and the double-D symbol are registered trademarks of Dolby Laboratories.

- HDMI™, the HDMI™ logo and High-Definition Multimedia Interface are trademarks or registered trademarks of HDMI™ Licensing, LLC.
- Blu-ray Disc is a registered trademark of the Blu-ray Disc Association.

- Major League Baseball trademarks and copyrights are used with permission of Major League Baseball Properties Inc. TM/© MLB 2008.



Specifications

Model Number	LC-46SB54U	LC-37SB24U	LC-32SB24U	LC-26SB24U
Screen Size	46" Class (45 63/64" Diagonal)	37" Class (37" Diagonal)	32" Class (31 35/64" Diagonal)	26" Class (26" Diagonal)
Aspect Ratio	16:9	16:9	16:9	16:9
DTV Capability	HDTV	HDTV	HDTV	HDTV
LCD Panel	Advanced Super View/Black TFT Panel	Advanced Super View/Black TFT	Advanced Super View/Black TFT	Active Matrix (a-si TFT) LCD
Number of Pixels (dots)	1920 x 1080	1366 x 768	1366 x 768	1366 x 768
Built-in DVD Slot	—	—	—	—
Luminance (cd/m ²)	450	450	450	500
Fine Motion Advanced (120Hz)	—	—	—	—
Dynamic Contrast Ratio ^{*1}	7500:1	7500:1	7500:1	—
Native Contrast Ratio	1500:1	1500:1	1500:1	800:1
Viewing Angles (H x V)	176° x 176°	176° x 176°	176° x 176°	160° x 150°
Lamp Life ^{**} (Hours)	60,000	60,000	60,000	60,000
Backlight	3-Wavelength	3-Wavelength	3-Wavelength	3-Wavelength
Tuner Type	ATSC / QAM / NTSC	ATSC / QAM / NTSC	ATSC / QAM / NTSC	ATSC / QAM / NTSC
Multi-pixel Technology	—	—	—	—
Response Time	6ms	6ms	6ms	8ms
Audio Output	15W + 15W	10W + 10W	10W + 10W	5W + 5W
Speakers Location/Type	Bottom/Fixed	Bottom/Fixed	Bottom/Fixed	Bottom/Fixed
OPC (Optical Picture Control)	X	X	X	—
Terminals				
HDMI™ Input	2 (1080p compatible)	2	2	2
DVI-I with Audio In	—	—	—	—
RGB 15-Pin Input	1	1	1	1
HD Component In	2 (1080p compatible) - 1 side, 1 rear	2	2	1
S-Video In	1	1	1	1
Composite Video In	3 (1 side, 2 rear)	2	2	2
Audio L/R In	4	4	4	2
RF	1	1	1	1
RS-232C 9-Pin In	1	—	—	—
Digital Audio Out	1	1	1	1
Power Source AC Input	120V	120V	120V	120V
Power Consumption	256W	165W	135W	115W
Cabinet Color	High Gloss Black	High Gloss Black	High Gloss Black	High Gloss Black
Dimensions with stand/with speakers	TBD	35 19/32" x 25 3/32" x 9 1/16"	30 9/16" x 22 41/64" x 9 1/16"	26 5/16" x 19 11/16" x 9 9/16"
(W x H x D) with stand/without speakers	—	—	—	—
without stand/with speakers	TBD	35 19/32" x 23 1/32" x 3 3/4"	30 9/16" x 20 19/32" x 3 45/64"	26 5/16" x 17 3/4" x 4 9/16"
without stand/without speakers	—	—	—	—
Net Weight (lb.) with stand/with speakers	TBD	35.3	29.8	24.3
with stand/without speakers	—	—	—	—
without stand/with speakers	TBD	30.9	25.4	20.9
without stand/without speakers	—	—	—	—

*1 With Enhanced Picture Contrast Technology

*2 Typical time for power output decrease of about one half, assuming continuous use with brightness or dimming in standard mode and with a room temperature of 77°F

*3 With Fine Motion Mode on

Screen images in this brochure are simulated.
Design and specifications subject to change without notice.



Specifications

Model Number	LC-26DV24U	LC-19DV24U
Screen Size	26" Class (26" Diagonal)	19" Class (18 61/64" Diagonal)
Aspect Ratio	16:9	16:10
DTV Capability	HDTV	HDTV
LCD Panel	Active Matrix (a-si TFT) LCD	Active Matrix (a-si TFT) LCD
Number of Pixels (dots)	1366 x 768	1440 x 900
Built-in DVD Slot	X	X
Luminance (cd/m ²)	500	300
Fine Motion Advanced (120Hz)	—	—
Dynamic Contrast Ratio ^{*1}	—	—
Native Contrast Ratio	800:1	1000:1
Viewing Angles (H x V)	160° x 150°	170° x 160°
Lamp Life ^{**} (Hours)	60,000	50,000
Backlight	3-Wavelength	3-Wavelength
Tuner Type	ATSC / QAM / NTSC	ATSC / QAM / NTSC
Multi-pixel Technology	—	—
Response Time	8ms	5ms
Audio Output	5W + 5W	1.5W + 1.5W
Speakers Location/Type	Bottom/Fixed	Bottom/Fixed
OPC (Optical Picture Control)	—	—
Terminals		
HDMI™ Input	1	1
DVI-I with Audio In	—	—
RGB 15-Pin Input	1	1
HD Component In	1	1
S-Video In	1	1
Composite Video In	2	1
Audio L/R In	2	2
RF	1	1
RS-232C 9-Pin In	—	—
Digital Audio Out	1	1 (coaxial)
Power Source AC Input	120V	120V
Power Consumption	120W	60W
Cabinet Color	High Gloss Black	High Gloss Black
Dimensions with stand/with speakers	26 5/16" x 19 11/16" x 9 9/16"	19" x 15 5/16" x 8 7/8"
(W x H x D) without stand/without speakers	—	—
without stand/with speakers	26 5/16" x 17 3/4" x 4 9/16"	19" x 13 15/16" x 2 23/32"
without stand/without speakers	—	—
Net Weight (lb.) with stand/with speakers	25.9	12.6
without stand/without speakers	—	—
without stand/with speakers	22.8	—
without stand/without speakers	—	—

Specifications



Model Number	BD-HP20U
HD Disc Format	Blu-ray Disc®
Media	
BD-ROM/R/RE	Yes/Yes/Yes
DVD Video	Yes
DVD-RW/R	Yes
DVD+RW/R	Yes
CDDA/CD-RW/R	Yes
Format	
MPEG2/H.264/VC1	Yes
AC3	Yes
DTS	Yes
Linear PCM	5.1ch
DTS HD	DTS Stream Only
Dolby® Digital Plus	7.1ch
Dolby® TrueHD (Lossless)	Yes
Features	
HDMI™ (Output Resolution)	1080p
AQUOS LINK™	Yes
HDMI™ 1080p 24Hz Output	Yes
Video DAC	12bit/148.5MHz
Pop-up Menu	Yes
Display Dimmer	Yes
Parental Lock	Yes
Quick Start	Yes
Control via HDMI™ (AQUOS LINK)	Yes
Output Terminals	
Video	x 1
S-Video	x 1
Component	x 1
HDMI™	x 1
Analog Audio output (L/R)	x 1
Analog Audio output (Multi CH)	x 1 (5.1ch)
Digital out (Opt.)	x 1
Digital out (Coax.)	x 1
Accessories	
AV Cable	x 1
Remote Control	Unified
Power Consumption/Stand-by	25W/0.5W
Dimensions (W x H x D)	16.9" x 2.7" x 13.2"
Weight (lb.)	8.8

- Sharp and AQUOS are registered trademarks of Sharp Corporation. Think Green is a trademark of Sharp Electronics Of Canada Ltd.
- All other trademarks and registered trademarks are the property of their respective owners.
- Dolby®, ProLogic, and the double-D symbol are registered trademarks of Dolby Laboratories.

- HDMI™, the HDMI™ logo and High-Definition Multimedia Interface are trademarks or registered trademarks of HDMI™ Licensing, LLC.
- Blu-ray Disc is a registered trademark of the Blu-ray Disc Association.

- Major League Baseball trademarks and copyrights are used with permission of Major League Baseball Properties Inc. TM/© MLBP 2008.

At Sharp, we know color—and understand the value of being green



A Passion for Quality and Conservation

Our goal with LCD TVs was to build more than the world's finest televisions. We envision a world where people will use LCD TVs to access computer networks and services anytime, anywhere. And we designed AQUOS® LCD TVs to require fewer resources to manufacture...and less energy to enjoy.

In addition to superior performance, AQUOS televisions have a reputation for exceptional environmental responsibility:

- Most Sharp LCD TVs are ENERGY STAR® qualified and feature low power consumption and extended operating life.
- All U.S. models comply with the European Union Restriction of Hazardous Substances (EU RoHS) directives for lead, mercury, cadmium, hexavalent chromium, polybrominated biphenyls, polybrominated diphenyl ethers and other harmful substances. Furthermore, all Sharp LCD TVs are lead-free.

The most advanced technology minimizes environmental impact

Sharp's Kameyama plant #2 is an environmentally-friendly LCD TV factory and features one of the world's largest roof-mounted solar electric systems. Waste heat is recovered for air conditioning, with the co-generation system producing about one-third of the electricity used in the plant. The 5MW solar power system, 1MW fuel cell system and co-generation system together produce about one-third of the electricity used in the plant. This keeps CO2 emissions 40% lower than if the plant relied on thermally generated power. And all of the plant's production wastewater is recycled, purified and reused.



Sharp's Kameyama Plant #2 in Japan is a world-class environmentally-friendly LCD TV factory.

Sharp's New Plant

Sharp Corporation recently announced that it will soon begin construction of a 10th-generation LCD panel factory in Sakai City, Osaka Prefecture, Japan. The new plant is scheduled to be the first LCD TV factory to use 10th-generation glass substrates, which are the world's largest, at 112.2 inches by 120 inches, 60 percent larger than the 8th-generation substrates used at Kameyama plant number 2.

Environmental Product Innovations

Sharp's goal is to minimize the environmental impact of our products by continually implementing and improving product technologies, designs and programs aimed at environmental conservation, from the materials used in the manufacture and packaging of our products, to their transportation, use and safe disposal at the end of their product life.

Sharp. First and foremost.

In 1915, Sharp's founder invented the "Ever-Sharp Pencil," a mechanical pencil from which the Sharp Corporation derives its name. Sharp lives up to that name with its imaginative, ever-evolving technological creations.

There are many other firsts in Sharp's growing list. In 1931, as radio was gaining popularity around the world, Sharp began research into television, releasing the first Japanese television in 1953. Sharp's bright colors and high-quality LCD images hit the screen in 1987 in the first 3-inch color LCD television. Just four years later, Sharp released the world's first wall-hanging TV, beginning the era of large-screen LCD televisions. This led to its 20-inch LCD television— the industry's largest—in 1999. Sharp ushered in 2001 in a big way with its introduction of AQUOS® LCD TVs on New Year's Day. In 2005, Sharp introduced the world's then largest LCD TV, at 65-inch Class (64 17/32" Diagonal) and in 2007, Sharp introduced a 108-inch Class (107 17/32" Diagonal) LCD Monitor.

Sharp is committed to providing customers with the highest quality service to complement its premium line of products. The AQUOS AdvantageSM program offers free premium support to owners of large screen*¹ AQUOS LCD televisions. Complimentary benefits include a three month limited warranty extension, dedicated toll-free number routed directly to AQUOS Advantage Advisors, assistance with initial TV set-up and picture optimization, and priority repair services*². In addition, a new service called AQUOS Advantage Live is available through the AQUOS Net feature on SE94 models. AQUOS Advantage Live allows Advisors to provide unparalleled customer support with the ability to connect remotely to a customer's AQUOS SE94 LCD TV to assist in adjusting the TV's settings and optimizing the picture quality.

The AQUOS Advantage team is committed to exceeding customer expectations and maximizing their high definition viewing experience.

Call us today at 1-87-SEE-AQUOS (1-877-332-7867)

*¹ LCDs 42-inch Class or larger (42 1/64" Diagonal or greater)

*² Priority services may not be available based on location and availability. Full terms and conditions are available at www.sharppusa.com/aquosadvantage

AQUOS ADVANTAGESM

WWW.AQUOSADVANTAGE.COM

www.aquos.com



SHARP[®]

SHARP ELECTRONICS CORPORATION
Sharp Plaza, Mahwah, NJ 07495-1163
1-800-BE-SHARP • www.sharpusa.com

04/08 • 07L024