



# SingleApp<sup>TM</sup>

## Hardwood Flooring Adhesive & Moisture Vapor Membrane

**Simple, one-step  
installation cuts your  
work in half**

**Built-in protection against  
sub-floor moisture  
damage**

**Excellent sound  
dampening characteristics**

**For all glue down wood  
and bamboo flooring**

### Description

SingleApp<sup>TM</sup> is a trowel-applied, moisture-cure urethane that combines a rapid tacking adhesive with a high performance moisture vapor membrane - eliminating the need to install a separate vapor membrane and allowing for a simple, one-step application process.

SingleApp contains Bostik's patent pending Thickness Control<sup>TM</sup> Spacer Technology. This proprietary advancement enables recycled, rubber spacer particles to be evenly pre-mixed throughout the adhesive/membrane. These spacers serve to ensure board placement into the wet adhesive is done such that a uniform, adhesive/membrane thickness is maintained throughout the installation. This industry-first solution helps installers place the proper amount of adhesive/membrane under floor boards to achieve superior moisture vapor protection and sound reduction properties.

Once cured, SingleApp creates a tough, flexible, tenacious bond for the installation of engineered wood, parquet, solid wood/bamboo flooring designed and recommended in writing by the flooring manufacturer for glue-down applications. SingleApp's elastomeric characteristics allow it to move with the flooring as it naturally expands and contracts over the life of the floor.

SingleApp may be used over all properly prepared substrates common to hardwood flooring installations, including: concrete, plywood, particle or chip board (underlayment grade), well bonded vinyl and ceramic tile, cement backer board, gypsum patch/underlayments (dry, above-grade), cement patch/underlayments, radiant heat flooring, and properly prepared terrazzo.

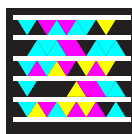
SingleApp does not contain any water, is virtually odorless, and has 0% VOCs.

SingleApp contains Bostik's Blockade<sup>TM</sup> antimicrobial protection, which inhibits the growth of bacteria, mold or mildew on the surface of the dried membrane; the dried membrane resists stains caused by mold.

SingleApp may also be used to install plywood as described, as well as ceramic tile, marble, and stone inlays for light commercial and/or residential applications.

### Product Benefits

- 4-in-1 formulation
- Patent pending Thickness Control<sup>TM</sup> Spacer Technology
- Bostik's Blockade<sup>TM</sup> antimicrobial protection
- Easy spread formulation
- Low odor, 0% VOCs
- Bridges cracks up to 1/8"
- Contains 1% recycled rubber content
- Superior tack
- Sound dampening characteristics



Get the free app for your phone at  
<http://gettag.mobi>

For simple how-to videos visit



## Directions for Use

Read and understand datasheet completely before beginning installation. Follow industry standards and flooring manufacturer's recommendations for acclimation, design, layout and application of flooring material. If jobsite conditions are outside of flooring manufacturer's recommendations, take necessary corrective actions. Apply SingleApp as directed (whether the moisture content of substrate exceeds or is within the flooring manufacturer's recommendation) to address current or possible future subfloor moisture and cracks (up to 1/8").

## Surface Preparation Step 1

Surfaces must be clean, dry and flat, free of voids, projections, loose materials, oil, grease, sealers and all other surface contaminants. SingleApp may be used for concrete slabs with elevated moisture levels up to 15 lbs. per 1,000 square feet per 24 hours (using an anhydrous calcium chloride test kit according to ASTM F-1869 test method), or up to 85% relative humidity (tested in accordance with ASTM F-2170). Completely remove any adhesive residue or surface contamination by diamond grinding, shot blasting or scarifying. When diamond grinding, shot blasting or scarifying, the resulting surface texture must be similar to light broom finished concrete. Maximum acceptable floor variation is 3/16" in 10 feet. Areas requiring patching or leveling must be done using a Portland cement-based material (e.g., Bostik UltraFinish™, Fast Patch 102™ or SL-150™ Self-Leveling Underlayment).

**PLEASE NOTE:** Concrete substrates should NOT be smooth and reflective; they should be a dull or broom-type surface texture for the adhesive/membrane to properly penetrate and bond.

## Open/Working Time Chart

		Humidity		
Temp.		40%	60%	80%
60° F	Open	2.5 Hours	2.5 Hours	2 Hours
70° F	Open	2 Hours	2 Hours	1.5 Hours
80° F	Open	1.5 Hours	1.5 Hours	1 Hour

## Installation Step 2

Open Lid - Surface skinning is common. Cut away skinned material and proceed.

The installation begins with a starter row. The starter row provides a stationary point to push against so flooring doesn't move during installation. Use a spacer (such as a piece of the flooring that is being installed) placed vertically between the starter row and a wall. Spread adhesive no further than you can reach (two or three rows at a time) at a 45° angle.

## Step 3

Clean up as you go using Bostik's Ultimate™ Adhesive Remover or mineral spirits (be careful not to harm finish), then dry buff with a non-abrasive paper towel.

## Step 4

After a few rows have been installed, and as you move across the room, tape the boards together using removable 3M Blue tape to prevent boards from sliding and to secure close-fitting joints. Rolling is recommended for all installations. Flooring that is not flat should be tacked, weighted, or rolled to ensure proper contact between the flooring and substrate.

**Plywood Over Concrete:** Score 4' x 4' or 2' x 8' sheets of 3/4" exterior-grade plywood on the backside every 8" to 10" by using a circular saw and cutting one-half the thickness of the plywood; "scoring or kerfing" takes the tension out of the plywood and helps to prevent possible warping or curling. Using a 1/4"x 1/4" V-Notch trowel, apply adhesive/membrane to substrate and

then set plywood into the wet adhesive/membrane. Allow the adhesive/membrane to fully cure before nailing strips or using SingleApp adhesive/membrane to install flooring.

## Open Time

Hot and humid conditions reduce the adhesive's open time, while cold and dry conditions extend the open time. All urethane adhesives should be wet to the touch and transfer to your fingers easily during installation. Do not install flooring into adhesive that has skinned over. Scrape it up and apply fresh adhesive. Refer to "Open/Working Time Chart".

## Cure Time

Humidity affects cure to a greater degree than temperature; the higher the humidity, the faster the cure. Under normal conditions, light foot traffic is acceptable after 8 – 10 hours; normal traffic after 24 hours.

## Clean-up

As you work, immediately clean any adhesive from prefinished flooring with Bostik's Ultimate Adhesive Remover or mineral spirits (be careful not to harm finish), then dry buff with a non-abrasive paper towel. Immediately clean all tools and equipment with Bostik's Ultimate Adhesive Remover or mineral spirits before material cures.

**Trowel Clean-up Tip:** Before use, cover areas of the trowel that are not used to spread the adhesive with duct tape. After use, simply tear off tape before material cures, and clean the remainder of the trowel with adhesive remover.

## Limitations

- In order to protect flooring against damages caused by moisture, periodically check coverage of adhesive during installation (by pulling up a plank and visually inspecting); 100% coverage is required for all solid wood/bamboo flooring;  $\geq 95\%$  coverage is required for all other wood flooring.
- Due to limitations with solid wood/bamboo flooring (e.g., lack of dimensional stability), "below-grade" installations are limited to engineered wood flooring.
- Do not install solid wood/bamboo flooring over sheet vinyl or VCT tiles.
- Bamboo installations must follow solid wood flooring installation recommendations.
- This membrane is designed to reduce moisture vapor emissions that originate/emanate from below the membrane only.
- This membrane does NOT reduce/affect issues originating from the sides, ends, or top of flooring (i.e., puddles, water, leaks, etc.).
- This membrane does NOT eliminate all possible moisture related or install related issues (i.e., improper acclimation of flooring, jobsite temperature/relative humidity, etc.).

- This membrane is designed to prevent excessive variance of moisture between the top, middle, and bottom of flooring that originates from the substrate.
- Slab temperature should be between 50°F and 95°F during installation.
- Do not use on wet, dusty, contaminated, glassy, smooth or friable substrates; do not use over substrates/slabs treated with sealers or curing compounds.
- Do not use in areas subject to hydrostatic head.
- Completely remove all adhesive residue and other surface contaminants by diamond grinding, shot blasting, or scarifying.
- Do not use over perimeter bonded flooring material.
- Use over gypsum-based underlayments is limited to dry, "above-grade" installations where the gypsum has dried hard (not dusty/powdery), with a minimum compressive strength > 2,000 psi for engineered wood installations, or minimum compressive strength > 2,500 psi for solid wood installations.
- Please refer to flooring manufacturer's recommendations and National Wood Flooring Association's specifications for proper acclimation and expansion relief around perimeter or throughout installation.
- Do not use with vinyl-backed cork flooring or foam-backed parquet.

- Uneven surfaces will result in hollow spots. Ensure that the substrate is level prior to installing adhesive.
- Do not use with cork flooring.

## Storage and Shelf Life

Store at temperatures between 50°F and 100°F. Shelf life is one year from date of manufacturing in closed, original packaging.

**Re-Seal Partially Used Container:** With pail upright, place a sheet of plastic (e.g., trash bag) over the top of the pail. Secure lid tightly over the plastic on top of pail. Plastic will help prevent the material from bonding the lid closed.

**Re-open Partially Used Container:** Remove lid. Carefully cut and discard cured material and plastic from top of pail. Any uncured material may be used.

## Packaging

SingleApp is available in 3.5 gallon pails.

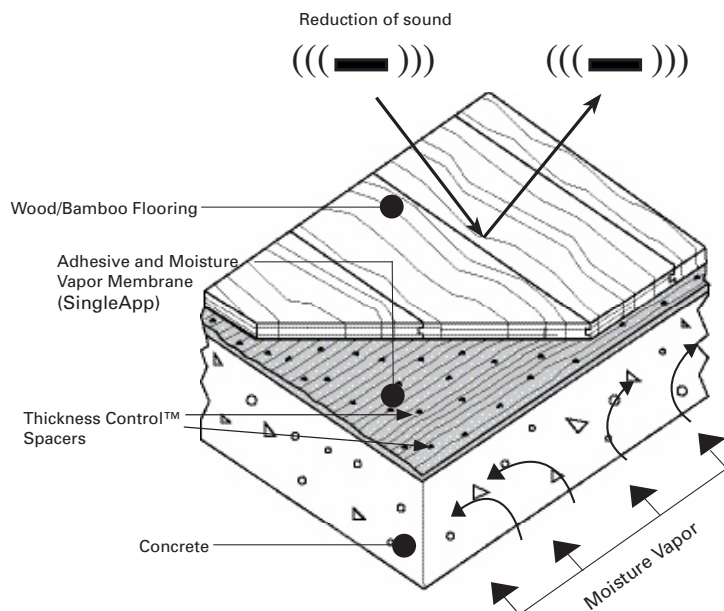
**Warning:** Inhaling vapors harmful. May cause allergic skin reaction. Causes skin, eye and respiratory tract irritation. Harmful if swallowed.

**Precautions:** Wash hands after handling and before eating. Use adequate ventilation. Wear appropriate protective equipment to avoid contact with skin and eyes. Store in cool (60-80°F / 15-30°C), dry, well-ventilated area. Water contamination should be avoided.

**First Aid:** Immediately flush eyes with plenty of water for at least 15 minutes. Get medical attention or advice. For skin contact, flush with large amounts of water while removing contaminated clothing. If skin irritation persists, call a physician. If inhaled, immediately remove the affected person to fresh air. Call a physician if symptoms develop or persist. If ingested, get immediate medical attention.

## Limited Warranty

The Limited Warranty for this product can be obtained at [www.bostik-us.com/resource-center/warranties](http://www.bostik-us.com/resource-center/warranties) or by calling 1-800-726-7845 (choose option 2, then option 2 again). TO THE MAXIMUM EXTENT ALLOWED BY LAW, BOSTIK DISCLAIMS ALL OTHER EXPRESS OR IMPLIED WARRANTIES, INCLUDING WARRANTIES OF MERCHANTABILITY AND FITNESS FOR A PARTICULAR PURPOSE, AND LIABILITY FOR DIRECT, INCIDENTAL, CONSEQUENTIAL, OR SPECIAL DAMAGES. UNLESS OTHERWISE STATED IN THE LIMITED WARRANTY, THE SOLE REMEDY FOR BREACH OF WARRANTY IS REPLACEMENT OF THE PRODUCT OR REFUND OF THE BUYER'S PURCHASE PRICE. It is the buyer's obligation to test the suitability of the product for an intended use prior to using it. Any claim for a defective product must be filed within 30 days of discovery of a problem, and must be submitted with written proof of purchase.



## Chemical & Physical Properties

Percentage of Water <sup>*1</sup>	0.0%	<p>*1 Per ASTM E203-01 Standard Test Method for water using Volumetric Karl Fischer Titration Method. Results rounded to the nearest tenth. Test Method has error range of +/- 0.2%</p> <p>*2 Per ASTM E-96 Standard Test Methods for Water Vapor Transmission of materials. Ratings are g/m<sup>2</sup>-24 hour-mmHG</p> <p>*3 Please refer to the Open/Working Time Chart</p> <p>*4 Humidity affects cure to a greater degree than temperature; the higher the humidity, the faster the cure. Under normal conditions, light foot traffic is acceptable after 6 to 8 hours; normal traffic after 12-16 hours.</p>
Water Vapor Permeability <sup>*2</sup>	< 0.6	
Percentage of Adhesive Coverage Required:		
- Engineered	≥ 95%	
- Solid wood/Bamboo	100%	
Elongation	>180%	
Open/Working Time <sup>*3</sup>	90 minutes	
Application Temperature	50° F to 100° F	
Service Temperature	-40° F to 150° F	
Flash Point	≥ 145° F, closed cup	
VOC Compliant (SCAQMD Rule 1168)	Yes (0 g/L)	
Odor	Mild	
Color	Brown	
Weight	14.7 lbs./gallon	
Cure Time <sup>*4</sup>	8 to 10 hours	
Concrete Moisture Vapor Limits ASTM 1869 Calcium Chloride Method ASTM 2179 Relative Humidity Test	≤15 lbs/1,000 ft <sup>2</sup> /24 hrs ≤85% RH	

## Sound Reduction Ratings - Engineered Wood 3/8" (10mm) Thick Over 6" (15 cm) Concrete Slab<sup>2</sup>

	No Suspended Ceiling	Suspended Gypsum Ceiling
ASTM E90-09/E413-04 (STC)	50 (NGC Testing Services)	66 (NGC Testing Services)
ASTM E492-09/E989-09 (IIC)	50 (NGC Testing Services)	69 (NGC Testing Services)
ASTM E2179-03 (Delta IIC)	21 (NGC Testing Services)	21 (NGC Testing Services)

## Suggested Notched Trowel for Maximum Performance



1/4" x 3/16" V-Notch  
Flooring up to 3/8" thick  
Coverage: Up to 35 sq. ft./gallon



1/4" x 1/4" V Notch  
Flooring up to 3/4" thick  
Coverage: Up to 30 sq. ft./gallon

Trowel size is suggested to maximize coverage of adhesive. Periodically check coverage of adhesive during installation; 100% coverage is required for all solid wood/bamboo flooring; ≥95% coverage is required for all other wood flooring. Uneven subflooring may require the use of either a leveling/patching material, or a larger V-Notched trowel for proper coverage of adhesive. These trowels are available from leading tool manufacturers.

Bostik, Inc.  
211 Boston Street  
Middleton, MA 01949  
1-800-7/BOSTIK  
1-800-726-7845  
[www.bostik-us.com](http://www.bostik-us.com)  
[www.bostikdiytube.com](http://www.bostikdiytube.com)

This document supersedes all previously published literature.  
Y1-4-5-2011