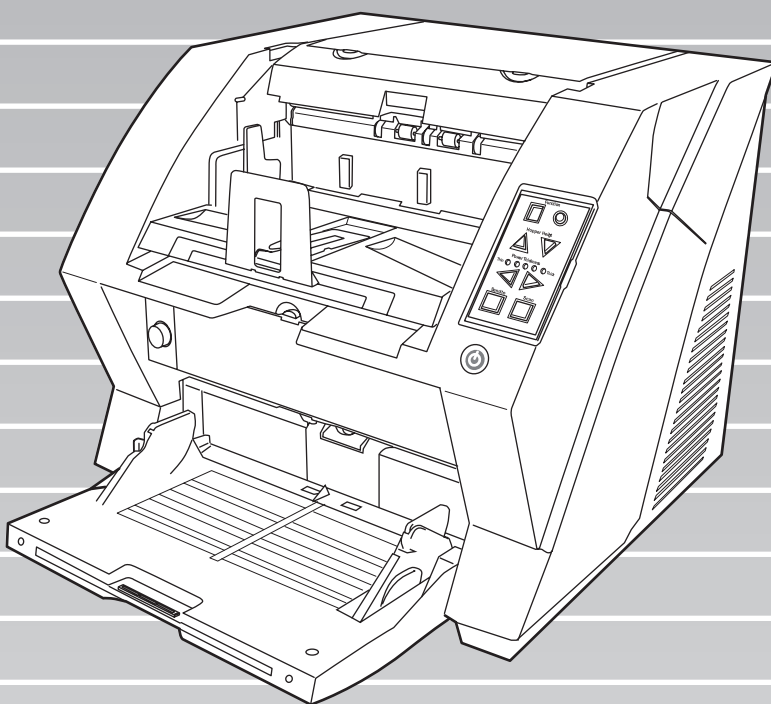




P3PC-1422-05EN

fi-5900C Image Scanner

Getting Started



FUJITSU

CONTENTS

■ Regulatory Information	ii
■ Liability	iii
■ Safety Precautions	v
Chapter1 PREPARING THE SCANNER.....	1
1.1 Checking the Contents of the Scanner Package.....	1
1.2 Names of Parts	1
1.3 Operator Panel.....	2
Chapter2 INSTALLATION OF THE SCANNER.....	4
2.1 Installing the Scanner	4
2.2 Connecting the Scanner to Your PC.....	4
2.3 Installing the Scanner Application	6
2.4 Checking Scanner Driver Operation.....	12
2.5 Uninstalling Supplied Programs.....	14
Appendix 1 TROUBLESHOOTING.....	AP-1
Appendix 2 DAILY CARE	AP-4
Appendix 3 REPLACING CONSUMABLES.....	AP-5

INTRODUCTION

Thank you for purchasing the fi-5900C Duplex Color Scanner.

This document describes how to use fi-5900C and basic operation methods. Before you start using fi-5900C be sure to thoroughly read this manual to ensure correct use.

The "fi-5900C Operator's Guide" stored on the Setup CD-ROM provides useful and detailed information on Operations when you would like to use advanced features, Daily Care for maintenance of the scanner, and Replacing Consumables to maintain conditions for smooth scanning. Please also read the fi-5900C Operator's Guide for further information.

■ Regulatory Information

FCC declaration

This equipment has been tested and found to comply with the limits for a Class B digital device, pursuant to Part 15 of the FCC Rules. These limits are designed to provide reasonable protection against harmful interference in a residential installation. This equipment generates, uses, and can radiate radio frequency energy and, if not installed and used in accordance with the instruction manual, may cause harmful interference to radio communications. However, there is no guarantee that interference will not occur in a particular installation. If this equipment does cause harmful interference to radio or television reception, which can be determined by turning the equipment off and on, the user is encouraged to try to correct the interference by one or more of the following measures:

- Reorient or relocate the receiving antenna.
- Increase the separation between the equipment and receiver.
- Connect the equipment into an outlet on a circuit different from that to which the receiver is located.
- Consult your dealer or an experienced radio/TV technician.

FCC warning: Changes or modifications not expressly approved by the party responsible for compliance could void the user's authority to operate the equipment.

NOTICE

- The use of a shielded interface cable is required to comply with the Class B limits of Part 15 of FCC rules. The length of the SCSI interface cable must be 1.5 meters (5 feet) or less.
- The length of the AC cable must be 3 meters (10 feet) or less.

Canadian DOC Regulations

This digital apparatus does not exceed the Class B limit for radio noise emissions from digital apparatus set out in the Radio interference Regulations of the Canadian Department of Communications.

This Class B digital apparatus complies with Canadian ICES-003.

Le présent appareil numérique n'émet pas de parasites radioélectriques dépassant les limites applicables aux appareils numériques de la classe B et prescrites dans le Règlement sur le brouillage radioélectrique dictées par le Ministère des Communications du Canada.

Cet appareil numérique de la classe B est conforme à la norme NMB-003 du Canada.

Bescheinigung des Herstellers / Importeurs

Für den fi-5900C wird folgendes bescheinigt:

- In Übereinstimmung mit den Bestimmungen der EN45014(CE) funktentstört
- Maschinenlärminformationsverordnung 3.GPSGV: Der höchste Schalldruckpegel beträgt 70 dB (A) oder weniger, gemäß EN ISO 7779.

Dieses Gerät wurde nicht für die Benutzung in unmittelbarer Umgebung starker Lichtquellen (z. B. Projektoren) konzipiert.

International ENERGY STAR® Program

As an ENERGY STAR® Partner, PFU LIMITED has determined that this product meets the ENERGY STAR® guidelines for energy efficiency.

The International ENERGY STAR® Office

Equipment Program is an international program that promotes energy saving through the penetration of energy efficient computers and



other office equipment. The program backs the development and dissemination of products with functions that effectively reduce energy consumption. It is an open system in which business proprietors can participate voluntarily. The targeted products are office equipment such as computers, monitors, printers, facsimiles, copiers, scanners, and multifunction devices. Their standards and logos are uniform among participating nations.

■ Liability

READ ALL OF THIS MANUAL CAREFULLY BEFORE USING THIS PRODUCT. IF THIS PRODUCT IS NOT USED CORRECTLY, UNEXPECTED INJURY MAY BE CAUSED TO USERS OR BYSTANDERS.

Also, keep this manual in a safe place so that it can be easily referred to during use of this product.

While all efforts have been made to ensure the accuracy of all information in this manual, PFU assumes no liability to any party for any damage caused by errors or omissions or by statements of any kind in this manual, its updates or supplements, whether such errors are omissions or statements resulting from negligence, accidents, or any other cause. PFU further assumes no liability arising from the application or use of any product or system described herein; nor any liability for incidental or consequential damages arising from the use of this manual. PFU disclaims all warranties regarding the information contained herein, whether expressed, implied, or statutory.

Use in High-safety Applications

This product has been designed and manufactured on the assumption that it will be used in office, personal, domestic, regular industrial, and general-purpose applications. It has not been designed and manufactured for use in applications (simply called "high-safety applications" from here on) that directly involve danger to life and health when a high degree of safety is required, for example, in the control of nuclear reactions at nuclear power facilities, automatic flight control of aircraft, air traffic control, operation control in mass-transport systems, medical equipment for sustaining life, and missile firing control in weapons systems, and when provisionally the safety in question is not ensured. The user should use this product with adopting measures for ensuring safety in such high-safety applications. PFU LIMITED assumes no liability whatsoever for damages arising from use of this product by the user in high-safety applications, and for any claims or compensation for damages by the user or a third party.

About the use of mercury



Lamp(s) inside this product contain mercury and must be recycled or disposed of according to local, state, or federal laws.

To avoid unexpected injuries;

- Do not put the substance contained in the lamp in your mouth as it has mercury.
- Do not breathe the chemical liquid contained in the scanner lamps.
- Do not incinerate, crush, or shred the lamps or scanner parts.

Trademarks

Microsoft, Windows, Windows Server and Windows Vista are registered trademarks of Microsoft Corporation in the United States and/or other countries.

ISIS and QuickScan are trademarks or registered trademarks of EMC Corporation in the United States.

Adobe, the Adobe logo, and Acrobat are either registered trademarks of Adobe Systems Incorporated in the United States and/or other countries.

Other product names are the trademarks or registered trademarks of the respective companies.

How Trademarks Are Indicated In This Manual

References to operating systems (OS) are indicated as follows:

Windows 2000	Microsoft® Windows® 2000 Professional operating system.
Windows XP	Microsoft® Windows® XP Professional operating system(32/64-bit), Microsoft® Windows® XP Home Edition operating system.
Windows Server 2003	Microsoft® Windows Server® 2003 Standard Edition (32/64-bit)

Windows Vista
 Microsoft® Windows Vista® Home Basic operating system (32/64-bit),
 Microsoft® Windows Vista® Home Premium operating system (32/64-bit),
 Microsoft® Windows Vista® Business operating system (32/64-bit),
 Microsoft® Windows Vista® Enterprise operating system (32/64-bit),
 Microsoft® Windows Vista® Ultimate operating system (32/64-bit)

Where there is no distinction between the different versions of the above operating system, the general term "Windows " is used.

Adobe Acrobat Adobe® Acrobat®

All the descriptions in this manual assume the usage of Adobe Acrobat bundled with this product. However, Adobe Acrobat may be upgraded without notice. If the descriptions differ from the screens actually displayed, refer to the Acrobat's "Help".

Manufacturer

PFU LIMITED

International Sales Dept., Imaging Business Division, Products Group
 Solid Square East Tower, 580 Horikawa-cho, Saiwai-ku, Kawasaki-shi Kanagawa 212-8563, Japan
 Phone : (81-44) 540-4538

All Rights Reserved. Copyright © PFU LIMITED 2006, 2007

About Maintenance

The user must not perform repairs on this scanner. Contact the store where you purchased the scanner or an authorized FUJITSU Image Scanner service provider to make repairs to this product.

Warning Indications Used In This Manual

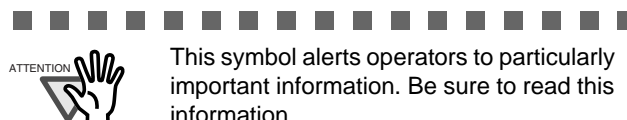


This indication alerts operators to an operation that, if not strictly observed, may result in severe injury or death.



This indication alerts operators to an operation that, if not strictly observed, may result in safety hazards to personnel or damage to equipment.

Symbols Used In This Manual



This symbol alerts operators to particularly important information. Be sure to read this information.



This symbol alerts operators to helpful advice regarding operation.



A TRIANGLE symbol indicates that special care and attention is required. The drawing inside the triangle shows the specific caution.



A CIRCLE with a diagonal line inside shows action which users may not perform. The drawing inside or under the circle shows the specific action that is not allowed.



Outline characters on a colored background show instructions users should follow. It may also include the drawing that shows the specific instruction.

Warning Label



The glass surface inside the ADF becomes hot during the operation. Be careful not to touch the glass surface inside the ADF.



Do NOT remove, stain or scratch the warning labels from the scanner.

Screen Examples In This Manual

The screen examples in this manual are subject to change without notice in the interest of product improvement. If the actual displayed screen differs from the screen examples in this manual, operate by following the actual displayed screen while referring to the User's Manual of the scanner application you are using.

The screenshots in this manual were captured from FUJITSU TWAIN32 scanner driver, ScandAll PRO Image Capturing Utility Software, FUJITSU ISIS scanner driver, QuickScan Pro™ image capturing software and Adobe® Acrobat®.

■ Safety Precautions



Do not damage the AC cable.



A damaged AC cable may cause fire or electric shock. Do not place heavy objects on AC cables, or pull, bend, twist, heat, damage or modify AC cables.
Do not use damaged AC cables or power plugs, or install any cables or power plugs to loose wall sockets.

Use only specified AC cables and connector cables.



Use only specified AC cables and connector cables. Failure to use the correct cables might cause electric shock and/or equipment failure. Please don't use the AC cable provided with this scanner for other devices, since this might cause equipment failure and other troubles or an electric shock.

Use this scanner only at the indicated power voltage. Do not connect to multiple-power strips.



Use this scanner only at the indicated power voltage and current. Improper power voltage and current might cause fire or electric shock. Do not connect to multiple-power strips.

Do not touch the AC cable with wet hands.



Do not touch the power plug with wet hands. Doing so might cause electric shock.

Wipe any dust from the power plug.



Wipe off any dust from metal parts on the power plug or metal fittings with a soft, dry cloth. Accumulated dust might cause fire or electric shock.

Do not install the device in locations that has oil smoke, steam, humidity, and dust.



Do not install the scanner in locations subject to oil smoke, steam, humidity, and dust. Doing so might cause a fire or electric shock.

Turn the scanner OFF if it is damaged.



If the scanner is damaged for any reason, turn off the scanner and unplug the AD cable before contacting the store you purchased the scanner.

Do not put liquids inside the scanner.



Do not insert or drop metal objects in to the scanner. Do not scan wet documents or documents with paper clips or staples. Do not splash or allow the scanner to get wet.



If foreign objects (water, small metal objects, liquids, etc.) get inside the scanner, immediately turn off the scanner and disconnect the power plug from the power outlet, then contact the store where you bought the scanner or the Maintenance Service Center. Pay particular attention to this warning in households where there are small children.



Do not touch the inside of the scanner unless necessary.



Do not take apart or modify the scanner. The inside of the scanner contains high-voltage components. Touching these components might cause fire or electric shock.

Do not use the scanner if there is a strange odor.



If you detect excessive heat coming from the device or detect other problems such as smoke, strange smells or noises, disconnect immediately the power plug in order to turn out the scanner. Make sure that any smoke coming from it has stopped, before contacting the store where you bought the scanner or an authorized FUJITSU scanner service provider.



Do not install the scanner on unstable surfaces.



Make sure that the scanner is installed on a flat, level surface and that none of its parts extend beyond the surface top, such as a desk or table. Do not install the scanner on unstable surfaces. Install the scanner on a level surface that is free of vibration to prevent it from falling. Install the scanner on a strong surface that will support the weight of the scanner and other devices.



Do not block the ventilation ports.



Do not block the ventilation ports. Blocking the ventilation ports generates heat inside of scanner, which may result in fire or scanner failure.

Do not place heavy objects or stand on top of the scanner.



Do not place heavy objects on the scanner or use the scanner's surface top to perform other work. Improper installation might cause injuries and equipment failure.

Firmly insert the power plug.



Firmly insert the power plug as far it can go into the power outlet.

Avoid any contact when scanner is in use.



Avoid touching any scanner mechanism during scanning since this may cause injuries.

Do not use the scanner immediately after moving it from a cold place into a warm room.



Do not use the device immediately after moving it from a cold place into a warm room. This may cause condensation, which might lead to scanning errors. Let the device dry about one or two hours before you use it.

Before moving the scanner, disconnect the power plug from the power outlet.



Do not move the scanner with the power and interface cables connected as this might damage the cables, causing fire, electric shock or injuries. Before moving the scanner, be sure to disconnect the power plug from the power outlet, and all other data cables. Make sure that the floor is free of any obstruction.

Protect the scanner from static electricity.



Install the scanner away from strong magnetic fields and other sources of electronic noise. Also, protect the scanner from any static electricity as this might cause the scanner to malfunction.

Do not use aerosol sprays near the scanner.



Do not use aerosol sprays to clean the scanner. Aerosol sprays cause dirt and dust to enter the scanner, resulting scanner failure and malfunction.

Disconnect the power plug from the power outlet when the scanner is not used for a long period of time.



When the scanner is not going to be used for a long period of time, be sure to disconnect the power plug from the power outlet for safety.

Do not install the scanner in the direct sunlight.



Do not install the scanner under direct sunlight or near heating apparatus. Doing so might cause excessive heat to build up inside the scanner, which can cause scanner trouble or even fire. Install the scanner in a well-ventilated location.

Do not carry the scanner alone.



When transporting the scanner, never carry it alone. The scanner is heavy.

Chapter1 PREPARING THE SCANNER

1.1 Checking the Contents of the Scanner Package

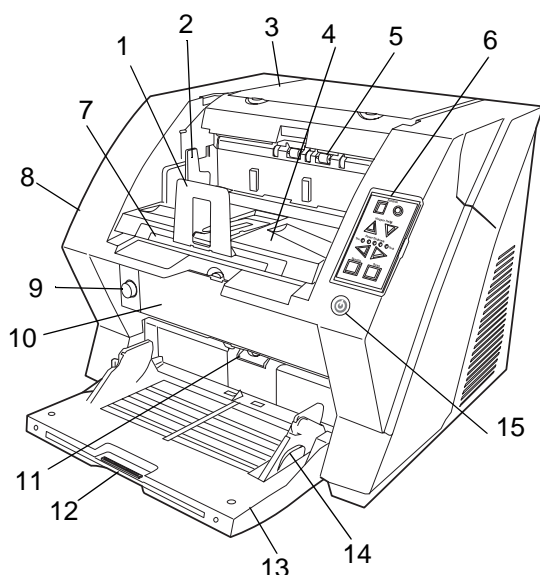
When you unpack the scanner package, make sure that the package contains all the parts on the list included in the package.

If any parts are missing or defective, contact your scanner dealer or an authorized FUJITSU scanner service provider. Handle the scanner and accessories with care.

1.2 Names of Parts

This section describes the names of parts.

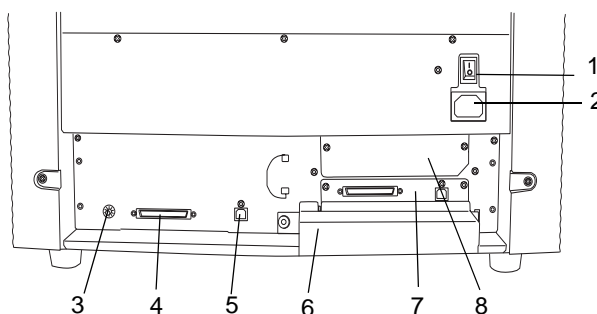
■ Front Side



No.	Name	Function
1	Stopper	Prevents ejected documents from dropping off the scanner.
2	Stacker side guide	For aligning ejected documents to a certain width.
3	Top cover	Cover to access the consumables storage box and Post Imprinter option (sold separately).
4	Stacker	Area where ejected paper collects after scanning.
5	Ejector	For ejecting the documents after scanning.
6	Operator panel	For operating the scanner.
7	Stacker extension	For scanning long documents. Pull the extension out according to the document's length.
8	ADF cover	Opens the cover for cleaning the inner parts of the ADF or for replacing consumables.

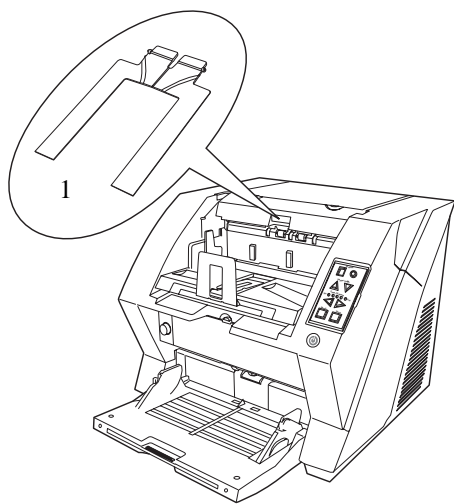
No.	Name	Function
9	ADF cover open button	Button used to open the ADF
10	Pre-imprinter cover	For the Pre-Imprinter option
11	ADF (Automatic document feeder)	The documents loaded onto the Hopper will be fed sheet by sheet for scanning.
12	Hopper extension	Pulls the Hopper extension out for loading long documents.
13	Hopper	Documents to be scanned are loaded onto the Hopper.
14	Hopper side guides	Sheet Guides used to make sure that the paper to be scanned is fed into the scanner straight, avoiding skew.
15	Power button	Switches the scanner ON&OFF.

■ Rear Side

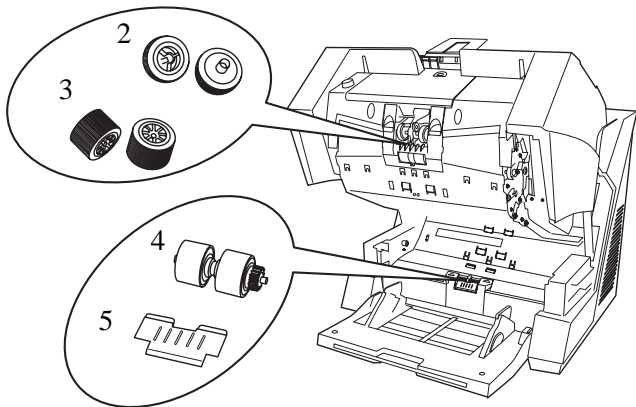


No.	Name	Function
1	Main power switch	For switching the power support ON/OFF.
2	Power inlet	For connecting the AC cable.
3	SCSI ID Switch	Sets the scanner's SCSI ID with this switch.
4	SCSI connector	For connecting the SCSI cable.
5	USB connector	For connecting the USB cable.
6	Extended memory slot	For connecting an extension memory (sold separately).
7	VRS slot	The VRS board has been installed
8	Extended slot	A spare slot for an option board

■ Removable Parts



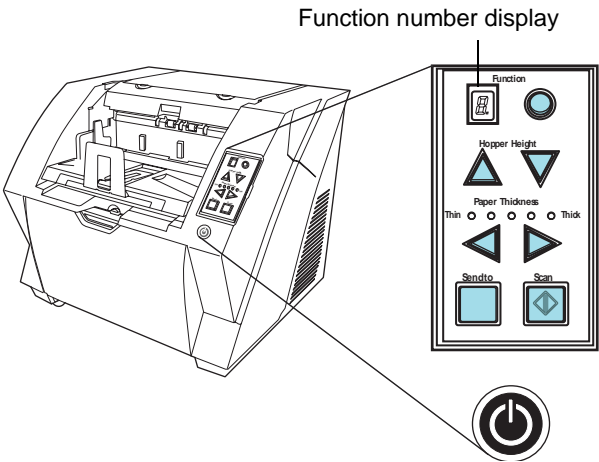
No.	Name	Description
1	Document smoother	Attached when the stacker position is set to align the ejected document by the leading edge, or when scanning documents with different widths.









No.	Name	Description
2	Pick rollers	Rollers that pick the paper from the hopper into the ADF. This is a consumable item.
3	Separator rollers	Rollers used to help separate the paper as the feeding begins. This is a consumable item.
4	Brake roller	Roller used to help separate the paper as the feeding begins. This is a consumable item.
5	Pad	Separation Pad used to help separate the paper as the feeding begins. This is a consumable item.

1.3 Operator Panel

The operator panel is located on the right side of the scanner. The panel consists of a Function Number Display, buttons and a LED.

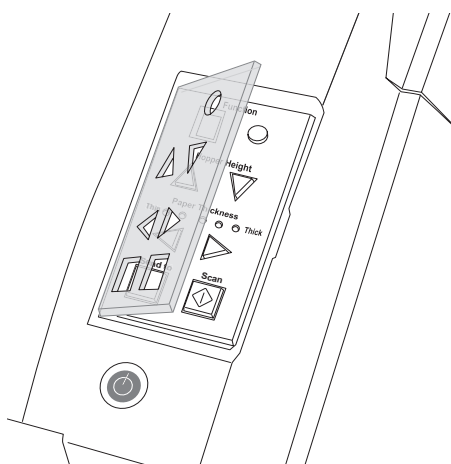


Name	Function
 Function	Shows the status of the scanner. For details, refer to "Indications on the Function Number Display" (page 3) .
 Hopper Height	Use these buttons to adjust the height of the Hopper to the Upper/Middle/Lower Positions. The hopper moves automatically to the right position after giving a scanning command. However, this may cause a delay before the actual scanning starts. To avoid unnecessary waiting time, it is recommended to set the hopper height prior to scanning. The approximate loading capacities are as follows (* these numbers differ depending on the document thickness): Upper: 100 sheets Middle: 300 sheets Lower: 500 sheets
 Paper Thickness Thin ○ ○ ○ ○ Thick	Use these buttons to adjust the paper thickness for the papers to be scanned. When picking errors or paper jams occur: Press the ◀ (Thin) button. When multifeed occurs: Press the ▶ (Thick) button. (Normally no need to change from the default setting)
 Send to	Use this button to start linked application. When this button is pressed at manual feed mode, the scanning stops immediately (*About the settings, refer to the "fi-5900C Operator's Guide" on the Setup CD-ROM).

Name	Function
	Use this button to start linked application. When this button is pressed during scanning operation, the scanning is cancelled (*About the settings, refer to the "fi-5900C Operator's Guide" on the Setup CD-ROM).
	Use this button to turn the power ON/OFF. When the power is turned on, the button is illuminated in blue.









Operator Panel Overlays are available in French, German, Italian, Spanish, and Chinese (Simplified). To change the overlay, open the plastic cover.



■ Indications on the Function Number Display

The following shows the indications on the Function Number Display.

No.	Descriptions
	Lights only one time upon turning on the scanner.
	Indicates that the scanner has been turned ON and is being initialized.
	Indicates that initialization has been completed successfully. This status is called "Ready Status."
 or 	Indicates that a temporary error (that users can solve) has occurred during the initialization or scanning of documents. "J" or "U" and an error number (1, 2, 4, 6, 8, 0) are displayed alternately. To return the scanner to the ready status ("1"), press the "Scan" or "Send to" button while the error is indicated.
	Indicates that a device alarm (that users can not solve) has occurred during the initialization or scanning of documents. "E" and an alarm number (0, 2 to 9, and A, c, d, F, 10 to 12, 15 to 19, 1A) are indicated alternately. To return the scanner to the ready status ("1"), press the "Scan" or "Send to" button. If this alarm occurs, turn the power off and then on again. If the alarm is indicated after turning on the power again, contact your service engineer.

2.1 Installing the Scanner

1. Place the scanner at its installation site.

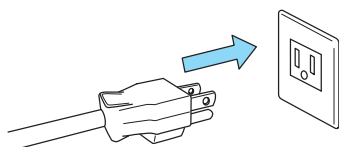
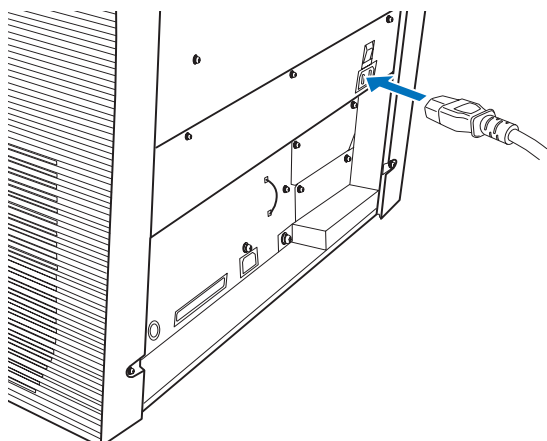
For details on the scanner's dimensions and required installation space, refer to the fi-5900C Operator's Guide, chapter "10. Scanner Specifications".



- The scanner weight is 50 kg (110 lb). Make sure two persons are available when moving the scanner.
- When carrying the scanner, only grip the bottom side.



2. Connect the AC cable to the Power inlet of the scanner and plug it into an outlet.



Use only the power cable provided by the manufacturer.



The Function Number Display and the LED may flash for an instant when plugging the AC cable into the outlet. This is not a malfunction.



2.2 Connecting the Scanner to Your PC

Connect either using the USB or SCSI interface.

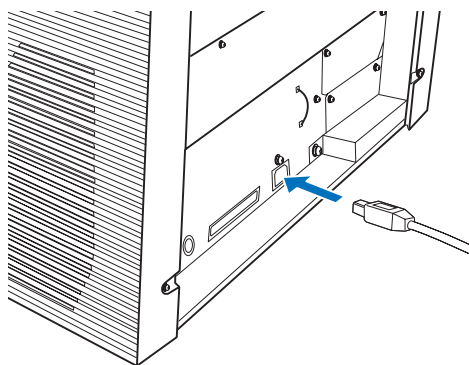


This scanner is provided with two interfaces: Ultra SCSI and USB 2.0 / 1.1. Connect only one of the USB or SCSI cable.



■ Connecting the USB Interface

1. Connect the USB cable to the USB connector.



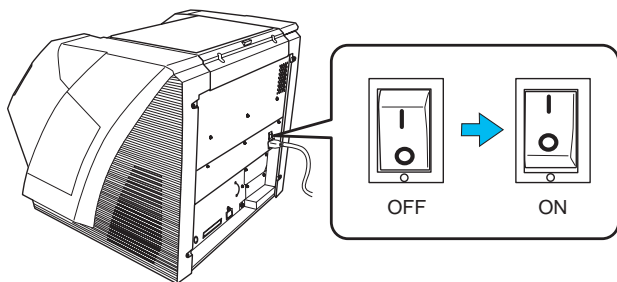
2. Connect the other end of the USB cable to your PC.



- Be sure to use the USB cable which comes with this scanner. Correct operation with commercially available cables is not guaranteed.
- When connecting to a USB hub, use the first stage USB hub that is closest to the computer. If you use the second or later hub stages, the scanner may not operate correctly.
- If you connect the scanner with USB 2.0, it is required that the USB port and Hub are compliant with USB 2.0. The scanning speed may slow down if it is connected with USB1.1.



- Press the "I" side of the main power switch to turn on the scanner.



■ Connecting the SCSI interface

When using the scanner with a SCSI interface, the following SCSI cable and SCSI card must be purchased.

- SCSI cable**

Use a SCSI cable whose connector on the scanner side is the 68-pin high-density shielded-type and whose connector on the PC side fits the connector of the SCSI card to use.

It is recommended to use a cable of length 1.5 m or shorter.

- SCSI card**

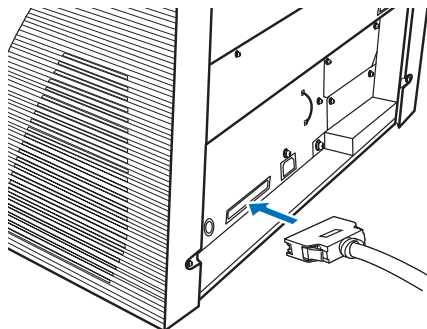
Find the recommended SCSI card information on the Fujitsu web site (FAQ).

<http://www.fujitsu.com/global/support/computing/peripheral/scanners/scsi/>



- When connecting the SCSI cable, turn the scanner off. Be sure to connect the SCSI cable first, and then turn on the power of the scanner and PC.
- In a SCSI daisy chain configuration, connect the scanner so that it is the terminated device.

- Insert the SCSI cable into the interface connector of the scanner until both sides click.

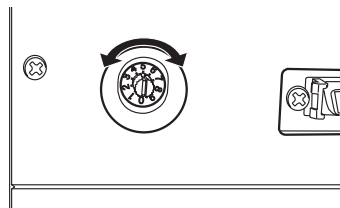


- Connect the other end of the cable to your PC.



Be careful not to bend the pins of the SCSI cable when connecting to the scanner.

- Set the SCSI ID using the SCSI ID switch on the back of the scanner.



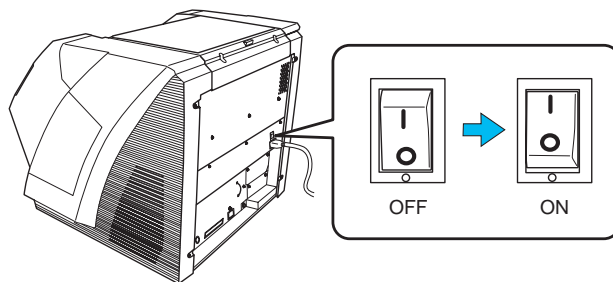
The SCSI ID is initially set to "5" at the factory.

If the SCSI ID of another SCSI device is set to the same ID, either change the scanner's SCSI ID or SCSI ID of the other SCSI device.

ID No.	Description
0 to 7	Can be set as the ID
8, 9	Works with the factory default value (SCSI ID = 5).

When the scanner is turned on, the SCSI ID set is enabled.

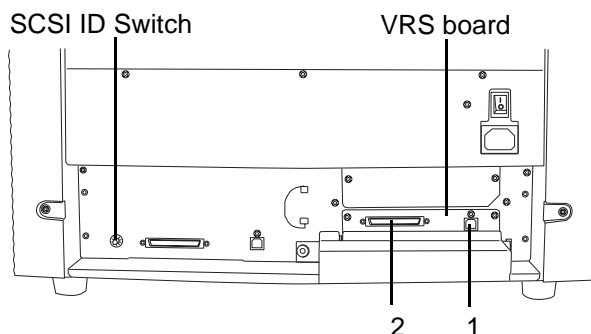
- Press the "I" side of the main power switch to turn on the scanner.



■ When using VRS

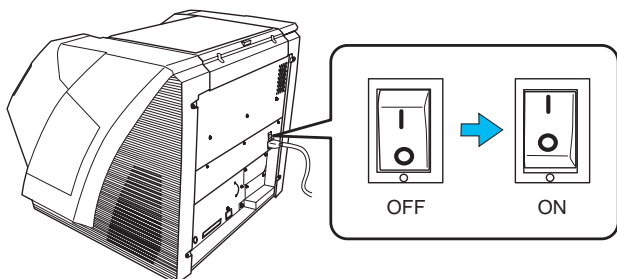
When using the Kofax® VRS, you need to connect it to the exclusive VRS board with either the USB cable or SCSI cable.

- If you use the USB cable, insert it into the interface connector (1) shown below.
If you use the SCSI cable, insert it into the interface connector (2) shown below.



- Connect the other end of the cable to your PC.

- When using the SCSI cable, set the SCSI ID using the SCSI ID switch on the back of the scanner.
(Refer to step 3 in ["Connecting the SCSI interface"](#) on page 5.)
- Press the "I" side of the main power switch to turn on the scanner.



VRS (VirtualReScan®) is the image processing software manufactured by Kofax Image Products, Inc. It enables to correct image defects, such as document skew when scanned by the scanner, or "jitter" generated by colors or half-tone dot meshing, and so on. You need to install the software in the VRS Installation CD enclosed with this scanner. For how to use the VRS, refer to the User's Guide attached to the VRS Installation CD.

2.3 Installing the Scanner Application

To scan documents with this scanner, you must install a scanner driver for operating the scanner as well as scanning software (hereinafter called the "application") for launching the driver and performing a scan.

The scanner drivers and application provided with the scanner are as follows:

- Scanner Driver:**
FUJITSU TWAIN 32 (⇒ page 6)
FUJITSU ISIS (⇒ page 8)
- Scanning application:**
ScandAll PRO (⇒ page 10)
(Supports both FUJITSU TWAIN 32 and ISIS)

Install either of the scanner drivers above and ScandAll PRO.



Be sure to install a scanner driver, FUJITSU TWAIN 32 or FUJITSU ISIS for using VRS Image Processing Options, also. Installing any one of the scanner drivers will also install "Software Operation Panel," which is needed to change the scanner settings.

In addition, this scanner is bundled with the following software applications. To make full use of the scanner, try to use them together.

- Error Recovery Guide (⇒ page 10)**
When errors occur in the scanner, you can view information about what happened to the scanner and how to solve the problem on the screen of the personal computer.
- QuickScan Pro™ <Trial Version> (⇒ page 10)**
This application complies with the ISIS standard and it is used for scanning images. This scanner is accompanied with a trial version of this application.
- Adobe Acrobat (⇒ page 11)**
This is an industry-standard application used for creating, managing, and making use of digitalized documents in PDF format.

How to install drivers and applications is described below.

For FUJITSU TWAIN32 Scanner Driver

FUJITSU TWAIN 32 is a TWAIN-compliant scanner driver. To use this scanner with any TWAIN-compatible application, install FUJITSU TWAIN 32, following the procedure below.

■ Preparation

Do the following before installing the application:

- Unpack the Setup CD-ROM, but do not insert the Setup CD-ROM into the CD drive yet.
- Connect the scanner correctly to your computer.



For details on how to connect the scanner, refer to ["2.2 Connecting the Scanner to Your PC"](#) on page 4.

- Uninstall any older versions of the FUJITSU TWAIN32 if they are already installed on your computer.



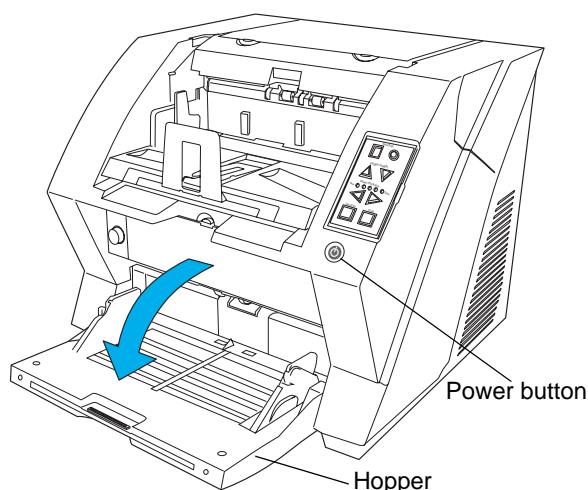
Uninstall [Scanner Utility for Microsoft Windows] from [Add/Remove Programs] on the control panel.

■ Installing the FUJITSU TWAIN32 Scanner Driver



Screenshots taken in Windows XP are used as examples. The displayed windows and operations may slightly vary depending on the operating system you are using.

1. Open the hopper.



Be sure to open the hopper before turning on the power with the Power button.

2. Press the power button to turn on the scanner.
3. Turn on your computer and log on to Windows.



Be sure to log on as a user with "Administrator" privileges.

4. When the scanner is automatically detected, [Found New Hardware Wizard] or [Add/Remove Hardware Wizard] dialog box appears. Click [Cancel] to close the Wizard dialog box.

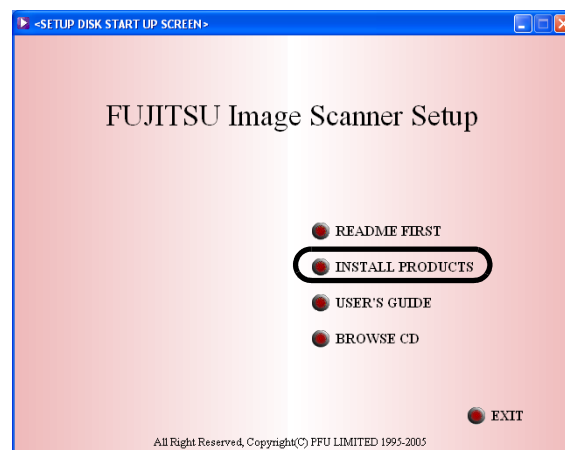


5. Insert the Setup CD-ROM into the CD drive.
⇒ <SETUP DISK START UP SCREEN> appears.



This screen may not appear if the "AutoPlay" setting is set to off. In this case, find "Install.exe" in the CD-ROM using "Explore" or "My Computer" to start installation.

6. Click [INSTALL PRODUCTS], and then click [TWAIN Driver].



7. The Error Recovery Guide Installation window appears.

The Error Recovery Guide is an application with which you can view on-screen information for troubleshooting errors that may occur in the scanner. This guide helps solve problems, so select [Yes] to install. You may also choose to install it later.



After you select [Yes] for installing Error Recovery Guide, the [Choose Setup Language] dialog box appears. Select a language and follow the on-screen instructions. The Error Recovery Guide dialog box is automatically displayed when the installation is complete. Wait until the installation of the TWAIN driver starts.

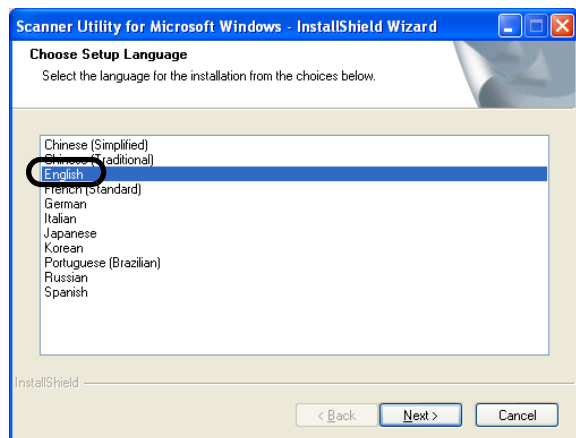
8. Image Processing Software Option installation windows appears.

The Image Processing software is an optional software that provides advanced binarization image processing to the scanner driver.



Selecting [Yes] in the Image Processing Software Option installation window will automatically execute the installation. Click the [OK] button on the confirmation message that appears when the installation is complete. After that the TWAIN driver installation is started.

9. Select a language for the installation on the [Choose Setup Language] dialog box, and then click the [Next] button.



10. Install the driver, following the on-screen instructions.

11. When you see the [InstallShield Wizard Complete] dialog box, click the [Finish] button.

Your computer will restart and detect the scanner. Do not remove the Setup CD-ROM from the CD drive until your computer completely starts up again.



- Depending on the state of the operating system, the computer may shut down and restart. In this case, the computer detects the scanner when it starts up. Do not remove the Setup CD-ROM from the CD drive until the computer completely starts up again.

- Depending on the operating system you are using, you may need to do the following.

Windows 2000:

If you see the [Digital Signature not Found] dialog box, click the [Yes] button.

Windows Vista:

If you see the [Found New Hardware] dialog box, select [Locate and install driver software], and then in the [User Account Control] dialog box, click the [Continue] button, if it is displayed.



The installation of FUJITSU TWAIN 32 is complete. Next, install ScandAll PRO (⇒ page 10).



To make sure that FUJITSU TWAIN 32 is successfully installed, perform a scan with a TWAIN-compliant application such as ScandAll PRO. For information about how to scan with ScandAll PRO, refer to section "2.4 Checking Scanner Driver Operation" on page 12.



For FUJITSU ISIS Scanner Driver

FUJITSU ISIS is an ISIS-compliant scanner driver. To use this scanner with any ISIS-compatible application, install FUJITSU ISIS, following the procedure below.

■ Preparation

Do the following before installing the driver:

- Unpack the Setup CD-ROM, but do not insert the Setup CD-ROM into the CD drive yet.
- Connect the scanner correctly to your computer.



For details on how to connect the scanner, refer to "2.2 Connecting the Scanner to Your PC" on page 4.



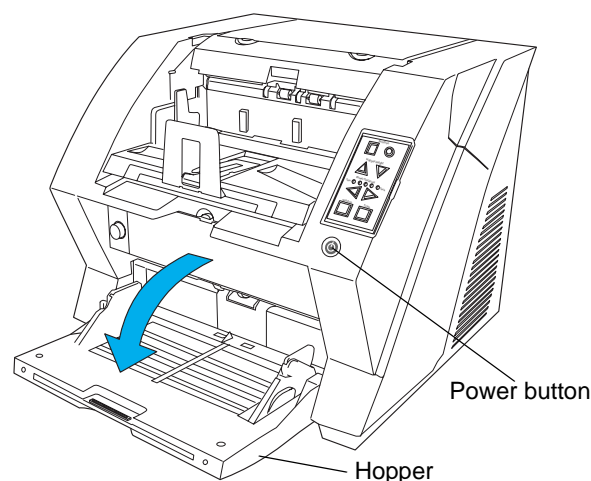
■ Installing the FUJITSU ISIS Scanner Driver



Screenshots taken in Windows XP are used as examples. The displayed windows and operations may slightly vary depending on the operating system you are using.



1. Open the hopper.

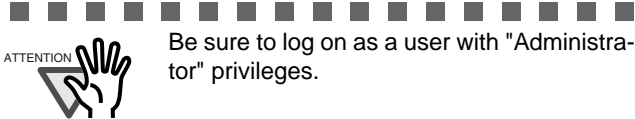


Be sure to open the hopper before turning on the power with the Power button.



2. Press the Power button to turn on the scanner.

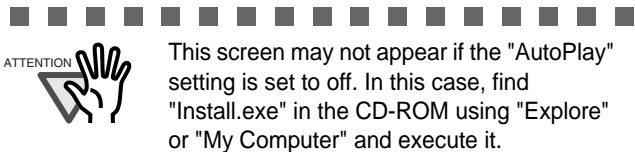
3. Turn on your computer, and then log on to Windows.



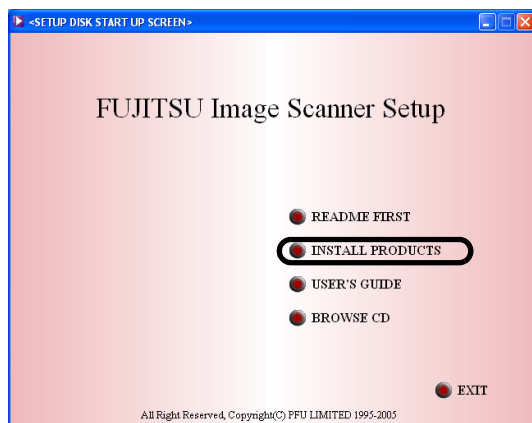
4. When the scanner is automatically detected, [Found New Hardware Wizard] or [Add/Remove Hardware Wizard] dialog box appears. Click the [Cancel] button to close the Wizard dialog box.



5. Insert the "Setup CD-ROM" into the CD drive.
⇒ <SETUP DISK START UP SCREEN> appears.

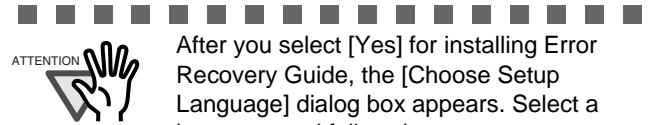


6. Click [INSTALL PRODUCTS], and then click [ISIS Driver].



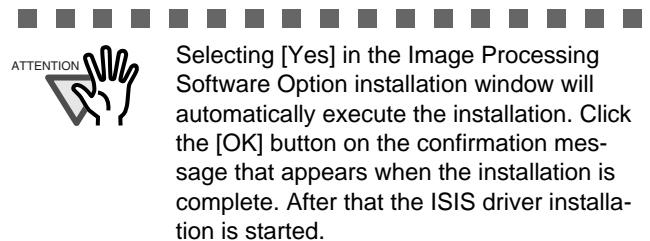
7. The Error Recovery Guide Installation window appears.

The Error Recovery Guide is an application with which you can view on-screen information for troubleshooting errors that may occur in the scanner. This guide helps solve problems, so select [Yes] to install it. You may also choose to install it later.

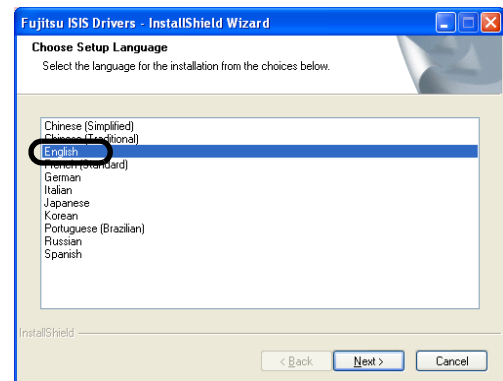


8. Image Processing Software Option installation windows appears.

The Image Processing software is an optional software that provides advanced binarization image processing to the scanner driver.



9. Select a language for the installation on the [Choose Setup Language] dialog box, and then click the [Next] button.



10. Install the driver, following the on-screen instructions.
11. When you see the [InstallShield Wizard Complete] dialog box, click the [Finish] button.

Your computer will restart and detect the scanner. Do not remove the Setup CD-ROM from the CD drive until your computer completely starts up again.



- Depending on the state of the operating system, the computer may shut down and restart. In this case, the computer detects the scanner when it starts up. Do not remove the Setup CD-ROM from the CD drive until the computer completely starts up again.
- Depending on the operating system you are using, you may need to do the following.

Windows 2000:

If you see the [Digital Signature not Found] dialog box, click the [Yes] button.

Windows Vista:

If you see the [Found New Hardware] dialog box, select [Locate and install driver software], and then in the [User Account Control] dialog box, click the [Continue] button, if it is displayed.

The installation of FUJITSU ISIS is complete.
Next, install ScandAll PRO (⇒ page 10).



To make sure that FUJITSU ISIS is successfully installed, perform a scan with an ISIS-compliant application such as ScandAll PRO. For information about how to scan with ScandAll PRO, refer to section "2.4 Checking Scanner Driver Operation" on page 12.

ScandAll PRO

■ Installing ScandAll PRO

ScandAll PRO is software for scanning images, which is in compliance with both TWAIN/ISIS standards. Using FUJITSU TWAIN 32 or FUJITSU ISIS together with ScandAll PRO allows you to create document images.



Be sure to log on as a user with "Administrator" privileges.

1. Insert the Setup CD-ROM into a CD drive.
⇒ <SETUP DISK STARTUP SCREEN> appears.
2. Click [INSTALL PRODUCTS], and then click [ScandAll PRO].
3. Select a language for the installation on [Choose Setup Language] dialog box, and then click the [OK] button.

4. Proceed with the installation, following the on-screen instructions.
5. When the [InstallShield Wizard Complete] dialog box appears, click the [Finish] button.



For information about the features of ScandAll PRO, refer to Help topics in ScandAll PRO.

Error Recovery Guide

If the Error Recovery Guide is installed on your computer, you can troubleshoot errors that may occur in the scanner by simply following the on-screen instructions.

If you did not install the Error Recovery Guide together with the scanner driver, follow the procedure below to install it.

1. Insert the Setup CD-ROM into the CD drive.
⇒ <SETUP DISK STARTUP SCREEN> appears.
2. Click [INSTALL PRODUCTS], and then click [Error Recovery Guide].
3. Select a language for the installation in the [Choose Setup Language] dialog box, and then click the [OK] button.
4. Install the application, following the on-screen instructions.
5. When you see the [InstallShield Wizard Complete] dialog box, click the [Finish] button.

QuickScan Pro™ <Trial Version>

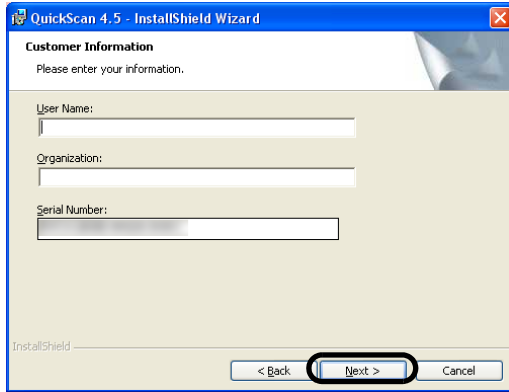
QuickScan Pro™ is image capturing software based on the ISIS standard. By using this software together with FUJITSU ISIS, you can scan documents with the scanner. Follow the procedure below to install the trial version of QuickScan Pro™ that comes with this scanner.



Be sure to log on as a user with "Administrator" privileges.

1. Insert the Setup CD-ROM into a CD drive.
⇒ <SETUP DISK STARTUP SCREEN> appears.
2. Click [INSTALL PRODUCTS], and then click [QuickScan Pro (Trial)].
3. In the [Welcome to the InstallShield Wizard for QuickScan 4.5] dialog box, click the [Next] button.

4. Type in necessary information in the [Customer Information] dialog box, and then click the [Next] button.



"QuickScan Pro™" included in the Setup CD-ROM is a trial version that can be executed 30 times before it is disabled. If you wish to continue using this product, please consider purchasing the full version. (When you install the trial version, use the displayed Serial Number.)

5. Install the application, following the on-screen instructions.



For information about the features and operations of QuickScan Pro™, refer to "QuickScan Overview" or "QuickScan Help." Form the [start] menu, select [All Programs] ⇒ [EMC Captiva] ⇒ [QuickScan], and then select a desired file.

Adobe® Acrobat®

Install Adobe Acrobat from the "Adobe Acrobat CD-ROM" provided with this scanner.



Adobe Acrobat is needed to display manuals.
* You do not have to install Adobe Acrobat if it is already installed on your computer.

1. Insert the "Adobe Acrobat CD-ROM" into the CD drive.

⇒ The [Adobe Acrobat] dialog box appears.



This dialog box may not appear if the "AutoPlay" setting is set to off. In this case, find "AutoPlay.exe" in the CD-ROM using "Explore" or "My Computer" and execute it.

2. In the dialog box below, click the folder icon; installation starts and the Setup dialog box appears.



3. In the dialog box below, click the [Next] button.



4. Install the application, following the on-screen instructions.



For information about how to install Adobe Acrobat, refer to "Read Me" that you can view when [Readme] is clicked in the dialog box shown in Step 2.

For information about how to operate Adobe Acrobat, refer to the Help topics in Adobe Acrobat.



Notes for using Adobe Acrobat

When scanning a paper document and converting the image to PDF using Adobe Acrobat, unexpected images may be output when:

1. Setting "Edge Shadow Removal" in Acrobat, and setting "Digital Endorser" or "Black Background" options in the TWAIN driver at the same time. Letter strings embedded in the image or the background may be missed.

Solution 1: Set "Edge Shadow Removal" to "OFF" or set any option other than "Adaptive" for "Color/Grayscale" and/or "Monochrome" under "Compression" by selecting [File]⇒[Create PDF]⇒[From Scanner]⇒[Optimization Options] in Acrobat.

Solution 2: Adjust the scanning density in the TWAIN driver.

2. Setting "Adaptive" for "Color/Grayscale" and/or "Monochrome" under "Compression" in Acrobat and scanning in a resolution lower than the resolution recommended for Acrobat.

Solution: Set OPTION to something other than "Adaptive" under "Compression."

3. Scanning a document longer than the double letter (11x17) or A3 size, when setting "Overscan" in the TWAIN driver, the scan may fail.

Solution: When scanning a double letter (11x17) or A3 size of document, do not set "Overscan" in TWAIN driver.

*As for detailed usage and information on Acrobat, refer to "Create a PDF file from a scanned document" in Acrobat Help.

2.4 Checking Scanner Driver Operation

This section explains how to check the operation of the installed scanner driver by using ScandAll PRO.

Make sure that the scanner driver is installed properly, following the procedure below.

Checking the Operation of the Scanner Driver

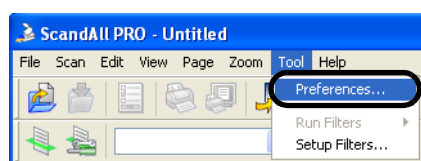
1. Load the document on the scanner.

For information about how to load the document, refer to section "2.6 Loading Documents on the ADF for Scanning" in the "fi-5900C Operator's Guide."

2. Launch ScandAll PRO.

From the [start] menu, select [All Programs] ⇒ [Fujitsu ScandAll PRO] ⇒ [Fujitsu ScandAll PRO].

3. In ScandAll PRO, select [Tool] on the menu, and then select [Preferences].

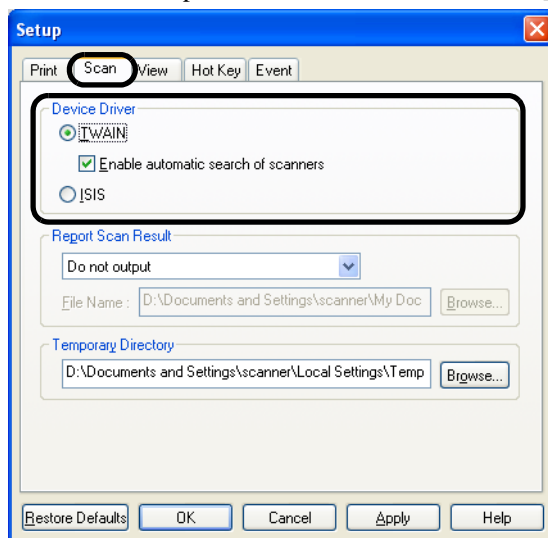


⇒ The [Setup] dialog box appears.

4. On the [Scan] tab, select a driver.

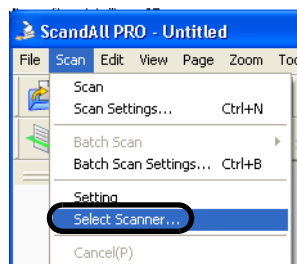
To check the operation of FUJITSU TWAIN 32, select [TWAIN].

To check the operation of FUJITSU ISIS, select [ISIS].



5. Click the [OK] button to close the [Setup] dialog box.

6. In ScandAll PRO, select [Scan] on the menu, and then select [Select Scanner].



Support and User registration for Adobe products

For details, refer to the technical support information stored in the [Customer Support] folder on Adobe Acrobat CD-ROM. (Note that free person-to-person support is not available for this is a bundled product.)

7. Select a scanner in the displayed dialog box.

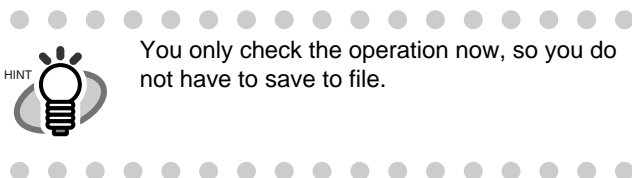
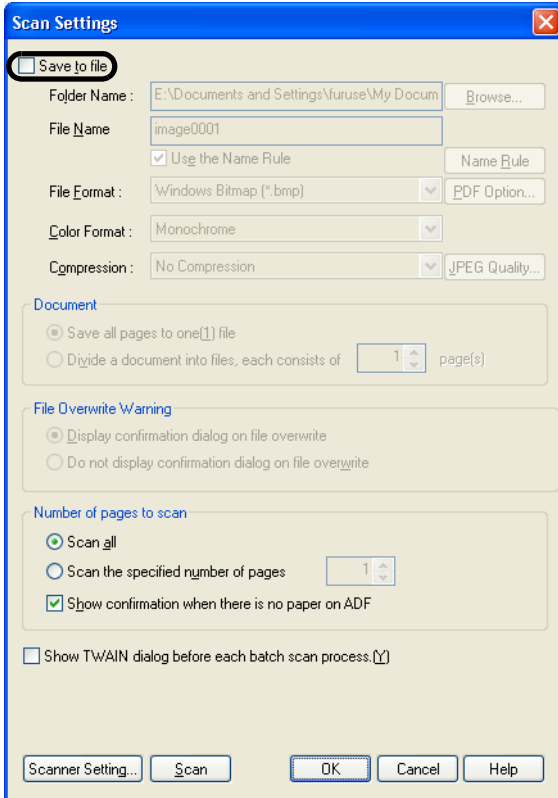
To use FUJITSU TWAIN 32:

Select [FUJITSU fi-5900Cd], and then click the [Select] button.

To use FUJITSU ISIS:

Select [Fujitsu fi-5900C], and then click the [Select] button.

8. Select [Scan] on the menu, and then select [Scan Settings].
9. In the [Scan Settings] dialog box, clear the [Save to file] checkbox.



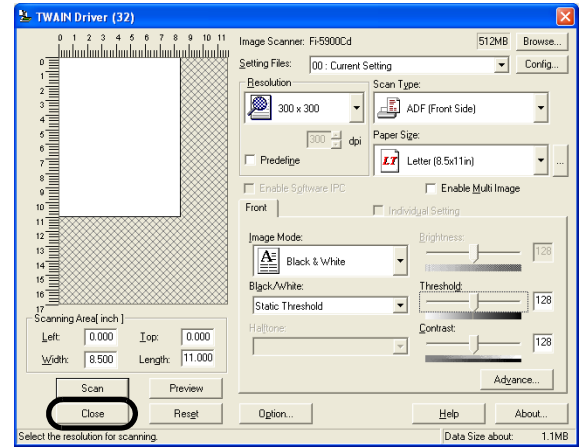
10. Click [Scanner Settings].

⇒ A setup dialog box appears for you to configure scanner driver settings.

11. Configure scanner settings such as the resolution and paper size.

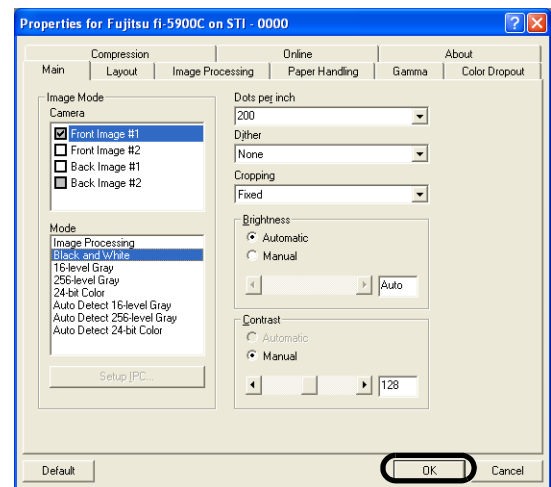
To use FUJITSU TWAIN 32:

On the dialog box below, configure scan settings, and then click the [OK] button.



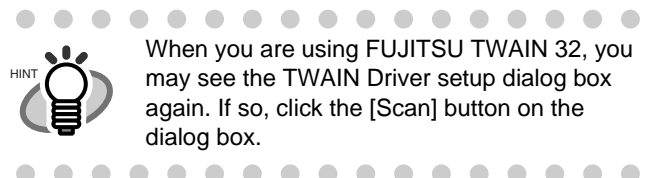
To use FUJITSU ISIS:

On the dialog box below, configure scanning settings, and then click the [OK] button.



⇒ You are returned to the [Scan Settings] dialog box.

12. Click the [Scan] button.



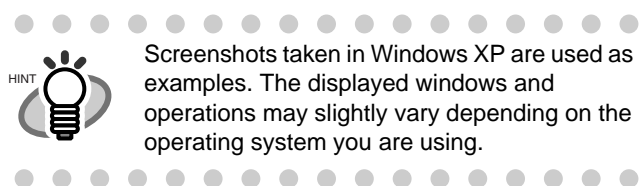
⇒ The document is scanned and the scanned image is displayed in the [ScandAll PRO] window.

If the scanned document image is displayed in the window, it means that the scanner driver is installed properly.

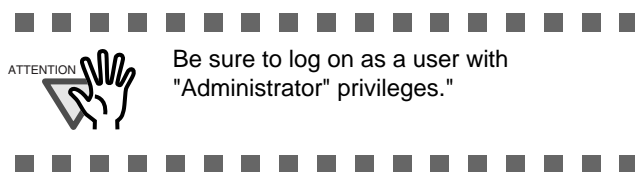
For further information about how to scan documents, refer to the "fi-5900C Operator's Guide" contained in the Setup CD-ROM.

2.5 Uninstalling Supplied Programs

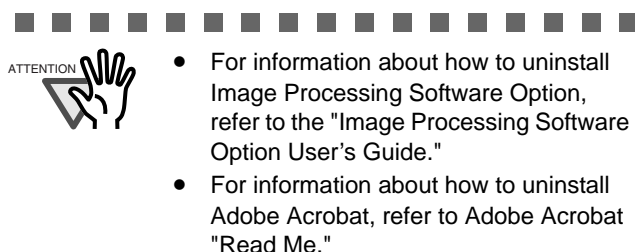
The following explains how to uninstall software applications provided with the scanner.



1. Start your computer.



2. Exit all applications.
3. From the [start] menu, select [Control Panel] ⇒ [Add or Remove Programs].
⇒ In the [Add or Remove Programs] dialog box, you can view a list of installed applications.
4. Select an application you want to uninstall as follows:
 - To remove FUJITSU TWAIN 32, select **"Scanner Utility for Microsoft Windows."**
 - To remove ScandAll PRO, select **"Fujitsu ScandAll PRO V1.5.1."**
 - To remove FUJITSU ISIS, select **"Fujitsu ISIS Drivers."**
 - To remove Error Recovery Guide, select **"Error Recovery Guide."**
 - To remove Software Operation Panel, (Software Operation Panel is automatically installed together with FUJITSU TWAIN 32/ISIS), select **"Software Operation Panel."**
 - To remove QuickScan Pro™, select **"QuickScan."**



5. Click the [Change/Remove] button or the [Remove] button.
6. When you see a confirmation dialog box, click the [OK] button or the [Yes] button.

⇒ Upon clicking the button, uninstallation is started.



Displays may vary depending on the operating system you are using. Follow the on-screen instructions.

Examples:

In Windows 2000, the window and button names described above are as follows:

- [Add or Remove Programs] ⇒ [Add/Remove Applications]
- The [Changel/Remove] button ⇒ The [Add/Remove] button

In Windows Vista, the window and button names described above are as follows:

- [Uninstall or Change a program] ⇒ [Uninstall or Change]



Appendix 1 TROUBLESHOOTING

■ Troubleshooting checklist

Symptom	Check this item	Remedy
Scanner does not turn on.	Have you pushed the power button on the front of the scanner?	Push the power button.
	Have you pushed the main power switch at the back of the scanner?	Push the Main power switch of the scanner. Then push the power button.
	Is the AC power cable properly connected to the scanner?	Correctly connect the AC power cable to the scanner adapter.
		Disconnect the AC power cable, then connect it again. If this does not restore the power supply, contact the store where you purchased the scanner or an authorized FUJITSU scanner service provider.
Scanning does not start.	Are documents loaded correctly on the hopper?	Load documents correctly on the hopper.
	Is the ADF closed completely?	Close the ADF completely.
	Is the USB cable or SCSI cable properly connected?	Correctly connect the cable. (When a USB hub is used, check the hub's power supply.)
	(When using the SCSI interface) Is SCSI ID set correctly?	Set SCSI ID correctly by SCSI ID switch on rear of scanner.
	Does the Function Number Display indicate an alarm or an error?	When the Function Number Display indicates an alarm or an error, refer to the "6. SOLVING COMMON PROBLEMS" in the fi-5900C Operator's Guide for removing the alarm or the error.
	Does the alarm state remain displayed even after the scanner has been turned off and back on again?	Turn off and on the power button. If this does not eliminate the alarm state, contact the store where you purchased the scanner or an authorized FUJITSU scanner service provider.
Vertical lines appear in the scanned image.	Is the glass dirty?	Clean the glass following the instructions in the fi-5900C Operator's Guide "4. DAILY CARE".
The scanned image shifts or is distorted.	Are the documents loaded correctly?	Load the documents correctly.
Quality of generated image is unsatisfactory.	Are the glass or sheet guides (Black/White reference area) clean?	Clean the dirty locations.
Multifeed* frequently occurs. *"Multifeed" is a phenomenon when two or more sheets of paper are fed simultaneously into the scanner.	Do the documents satisfy the "Document Quality" and the "Multifeed Detection Conditions" in the chapter 7 of the fi-5900C Operator's Guide?	Scan the documents that satisfy the "Document Quality" and the "Multifeed Detection Conditions" in the chapter 7 of the fi-5900C Operator's Guide.
	Are the documents set properly in the hopper?	Fan the documents before scanning. Correctly align the document stack and load them on the hopper. Refer to "2.6 Loading Documents on the Hopper" in the fi-5900C Operator's Guide for details.
	Is the document stack loaded on the hopper thicker than 50mm (2 inch)?	Reduce the number of sheets in the document stack to 50 mm (2 inch) thick or less.
	Are the Brake roller, the Separator roller or the Pad dirty?	Clean the Brake roller, the Separator roller or the Pad. Refer to the fi-5900C Operator's Guide "4. DAILY CARE".
	Are the Brake roller, the Separator roller or the Pad worn out?	Replace the Brake roller, Separator roller or the Pad. Refer to the fi-5900C Operator's Guide "5. REPLACEMENT OF CONSUMABLES".
	Have you set the document thickness on the Operator panel?	Set the document thickness thicker.

Symptom	Check this item	Remedy
Paper is not fed (pick error occurs frequently, or document stops midway).	Do the documents satisfy the "Document Quality" and the "Multifeed Detection Conditions" in the chapter 7 of the fi-5900C Operator's Guide?	Use the documents that satisfy the "Document Quality" and the "Multifeed Detection Conditions" in chapter 7 of the fi-5900C Operator's Guide.
	Are the Separator roller or the Pick rollers dirty?	Clean the Separator roller or the Pick rollers. Refer to the fi-5900C Operator's Guide "4. DAILY CARE".
	Are the Separator roller or the Pick rollers worn out?	Replace the Separator roller or the Pick rollers. Refer to the fi-5900C Operator's Guide "5. REPLACEMENT OF CONSUMABLES".
	Is there any debris on the document feed path?	Remove any debris from the document feed path.
	Have you set the document thickness on the Operator panel?	Set the document thickness thinner.
The generated images are elongated.	Are the Feed rollers or the Pinch rollers dirty?	Clean the Feed rollers or the Pinch rollers. Refer to the fi-5900C Operator's Guide "4. DAILY CARE".
	Have you adjusted the Vertical Magnification?	Select "Scanners and Cameras" in the control panel. Right-click on fi-5900C and select Properties. Click on the [Device Set] tab and then click on the [Offset] button. Adjust the Vertical Magnification.
There is a shadow on the leading edge of the generated image.	Have you adjusted the offset (the scanning starting position)?	Adjust the [Sub-scan Setting] on [Scanners and Cameras] in the control panel.

■ Temporary error

Indication	Meaning
J0	The paper feeding stopped to protect jammed paper from damage.
U1	A paper feed error occurred.
U2	A multi feed error occurred.
U4	The ADF cover or the pre-imprinter cover is opened.
U6	The print cartridge is not set.
U8	One of the following error occurred: 1. The document sensors are dirty. 2. The stacker is full. 3. The Brake roller or Separator rollers are not installed properly.

The following shows the procedure for releasing of each of the temporary errors.

- "J0" or "U1" error
 1. Remove the document jammed or stopped in the ADF.
(Refer to the fi-5900C Operator's Guide "6.1 Clearing Document Jams" on the Setup CD-ROM.)
 2. Confirm that the documents meet the paper specifications for scanning.
(Refer to fi-5900C Operator's Guide "7.2 Document Quality" on the Setup CD-ROM.)
- "U2" error
Press the [Send to] button on the Operator Panel. The documents that were multi fed will be ejected.
- "U4" error
Close the ADF cover or pre-imprinter cover.
- "U6" error
This is a temporary error related to the Imprinter option (sold separately). For details, refer to the "fi-590PRF/ fi-590PRB Operator's Guide, "5 Error Message".
- "U8" error
 1. Clean the document sensors
For details refer to fi-5900C Operator's Guide "4.5 Cleaning the Transport path and the sensors".
 2. Verify that the number of sheets ejected to the stacker is below stacker's capacity, and that the Pick roller is not set for manual feeding.
 3. Verify that the both rollers are installed properly. For details, refer to fi-5900C Operator's Guide "5.5 Replacing the Separator Rollers" and "5.6 Replacing the Brake roller".

■ Device alarm (Permanent error)

Indication	Meaning
E0	Hopper or Stacker error
E2	Optical system error (front)
E3	Optical system error (back)
E4	The motor fuse has blown out.
E5	The lamp fuse has blown out.
E6	Operator panel error
E7	Trouble occurred in the internal memory (EEPROM).
E8	SCSI fuse has blown out
E9	Image memory error
EA	Imprinter error
Ec	Image memory error
Ed	SCSI interface or USB interface controller error
EF	Background switching mechanism error
E10	ROM error
E11	Cooling fan error
E12	Heater error
E15	Extended memory error
E16	Option board error
E17	The imprinter fuse has blown out.
E18	Sensor error
E19	LSI error
E1A	Troubles occurred in the communication inside of the scanner.

When you encounter any alarm, turn off and on the scanner. If the alarm is still displayed on the Function Number Display, contact the store where you purchased the scanner or an authorized FUJITSU scanner service provider.

Appendix 2 DAILY CARE



During its operation, the inside glass of the ADF becomes very hot. Before you clean inside the scanner, turn off its power and unplug the AC adapter from the outlet. Wait for at least 15 minutes. Do not turn off the scanner when you clean the Feed rollers or Eject rollers.

■ Cleaning Materials

Cleaning Materials	Parts No.	Remarks
Cleaning sheet	CA99501-0016	20 sheets/pack For the cleaning method, refer to "4 Daily Care in the fi-5900C Operator's Guide.
Cleaner F1	PA03950-0352	1 bottle Moisten a cloth with this fluid and wipe the scanner to clean.
Cleaner F2	PA03950-0353	1 bottle Moisten a cloth with this fluid and clean metal rollers only.(Do not use for any other parts.)
Cleaning wipe	PA03950-0419	24 sheets per pack (*1)(*2)
Cotton swab	Commercially available	
Lint-free dry cloth		

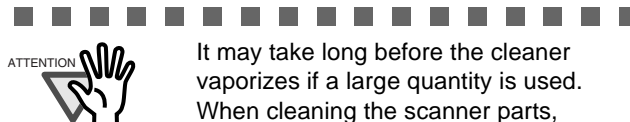
*1: For details about the cleaning materials, contact the FUJITSU scanner dealer where you purchased the scanner.

*2: Pre-moistened with Cleaner F1, Cleaning Wipes are used instead of moistened cloths.

■ Cleaning Method

The ADF must be cleaned with a lint-free cloth moistened with the Cleaner F1.

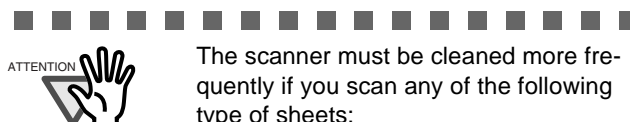
The Feed roller must be cleaned with a lint-free cloth moistened with the Cleaner F2.



It may take long before the cleaner vaporizes if a large quantity is used. When cleaning the scanner parts, dampen a cloth with modest quantities of the cleaner. In addition, wipe off the cleaner completely with a soft lint-free cloth to leave no residue on the surface of the cleaned parts.

■ Locations and Cycle for Cleaning

Part to clean	Standard Cleaning Cycle
Pad	Clean these parts after every 10,000 scans.
Pick rollers	
Brake roller	
Separator rollers	
Feed rollers	
Pinch rollers	
Transport path	
Glass	
Skew-detection sensor	
Document sensor	



The scanner must be cleaned more frequently if you scan any of the following type of sheets:

- Documents of coated paper
- Documents that are almost completely covered with printed text or graphics
- Chemically treated documents such as carbonless paper
- Documents containing a large amount of calcium carbonate
- Documents written with pencil

For details on the cleaning the ADF, refer to "4.DAILY CARE" in the fi-5900C Operator's Guide on the Setup CD-ROM".

Appendix 3 REPLACING CONSUMABLES



During its operation, the inside glass of the ADF becomes very hot.
Before replacing the consumables, turn its power off and unplug the AC adapter from the outlet. Wait at least 15 minutes.

Consumables and Replacement Cycle

The followings are the specifications of consumables and their recommended replacement cycles.

Description	Parts No.	Standard Replacement Cycle
Pad	PA03450-K014	After 600,000 scans or one year
Pick rollers	PA03450-K011	After 600,000 scans or one year
Brake roller	PA03450-K013	After 600,000 scans or one year
Separator rollers	PA03450-K012	After 600,000 scans or one year

To purchase consumables, contact the store where you purchased the scanner or an authorized FUJITSU scanner service provider.

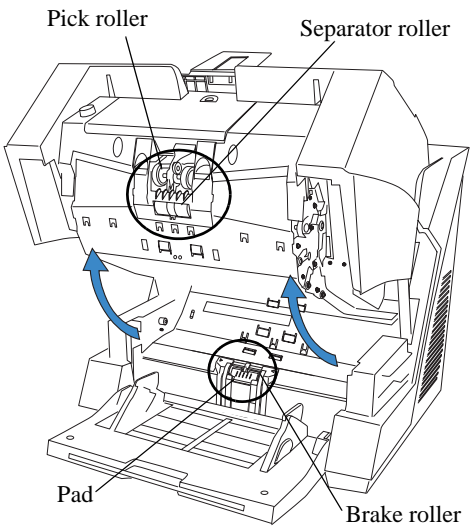
The replacement cycles above are rough guidelines when scanning A4/Letter sized, 20lb paper. This cleaning cycle varies according to the type of papers scanned and how frequently the scanner is used and cleaned.



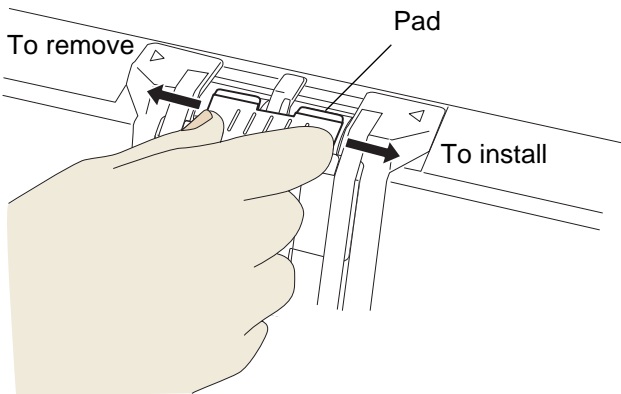
Use only the specified consumables.



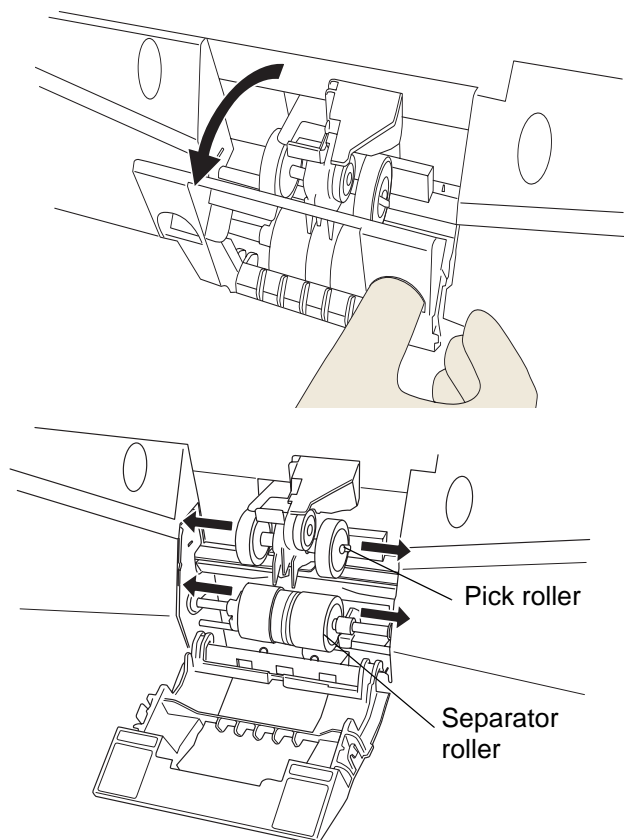
The following illustrations show the locations of the consumables. Refer to "5. REPLACEMENT OF CONSUMABLES" in the fi-5900C Operator's Guide on the Setup CD-ROM.



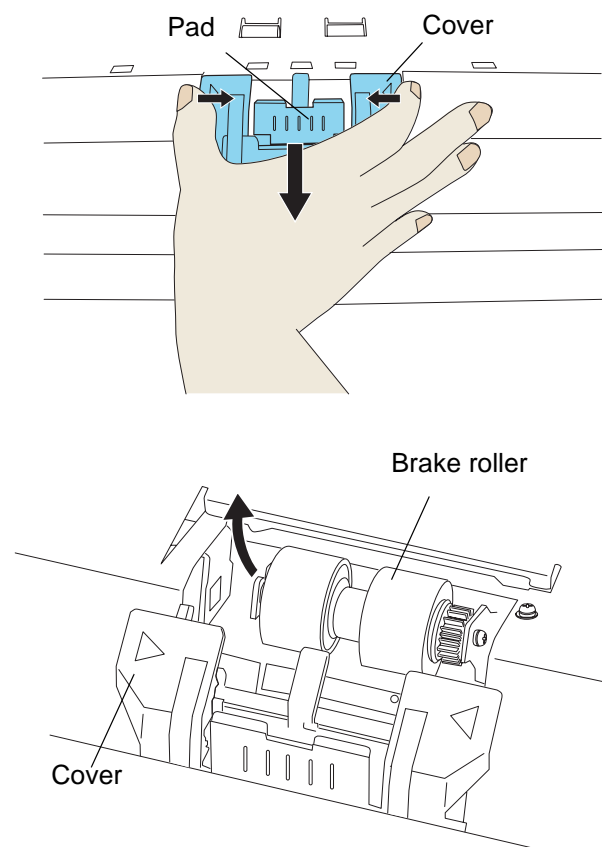
Pad



- Pick roller
- Separator roller



- Brake roller



fi-5900C Image Scanner Getting Started

P3PC-1422-05EN

Issue Date: November, 2007

Issued by: PFU LIMITED

-
- Copying of the contents of this manual in whole or in part and copying of the scanner application is prohibited under the copyright law.
 - The contents of this manual are subject to change without notice.
 - PFU LIMITED is not liable whatsoever for any damages resulting from use of this scanner and procedures described in this manual, profit loss due to defects, and any claims by a third party.

