

# KÄRCHER

makes a difference

**SC 3**

**SC 3 Premium**

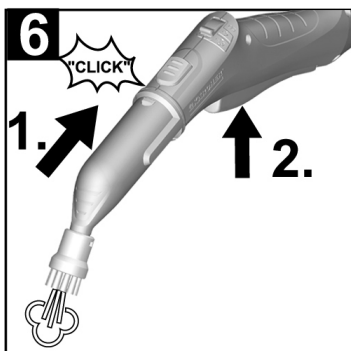
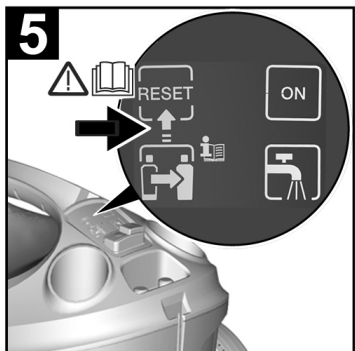
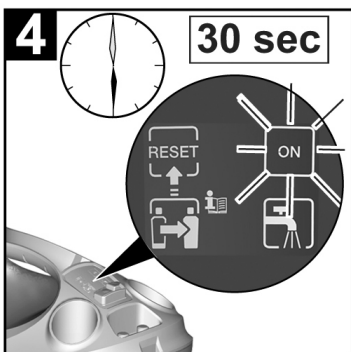
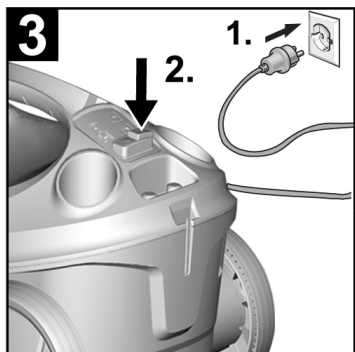
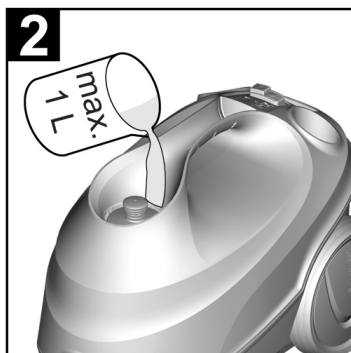
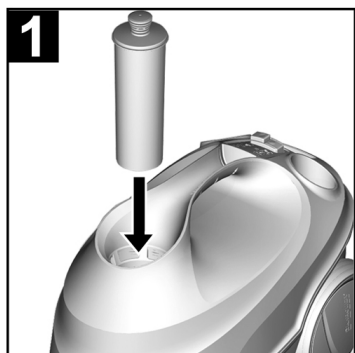
## Operating Instructions

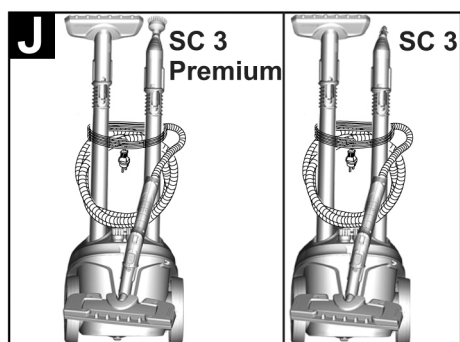
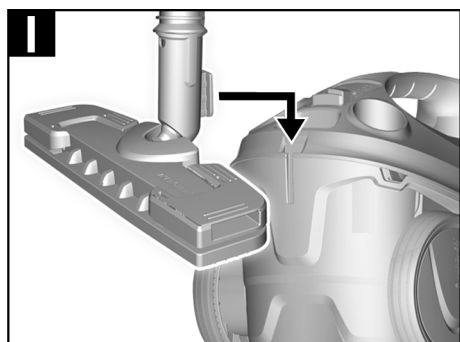
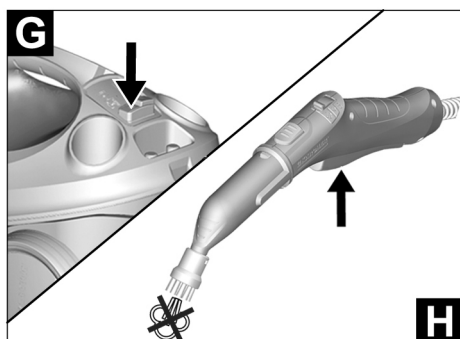
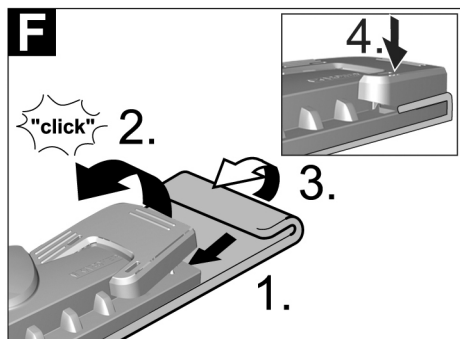
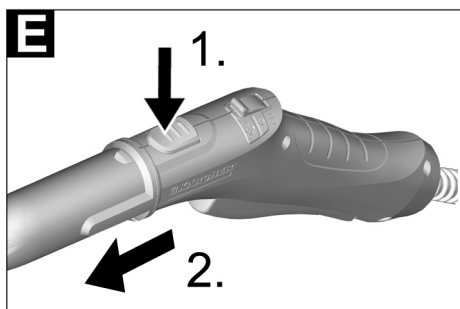
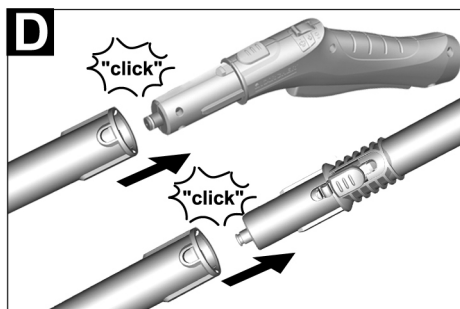
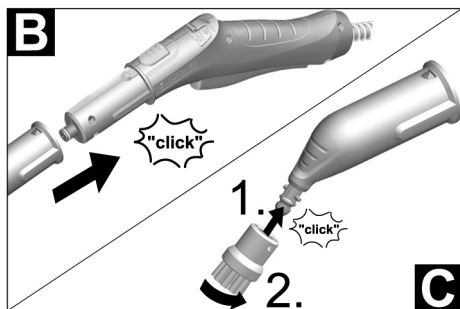
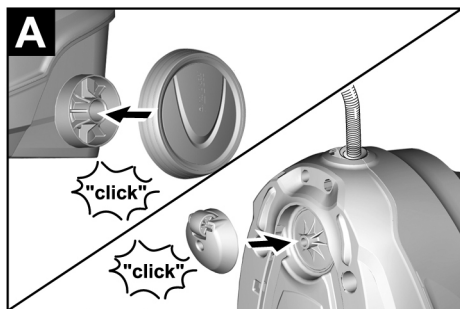
Before first use of the unit  
read these operating instructions  
and act in accordance with them.

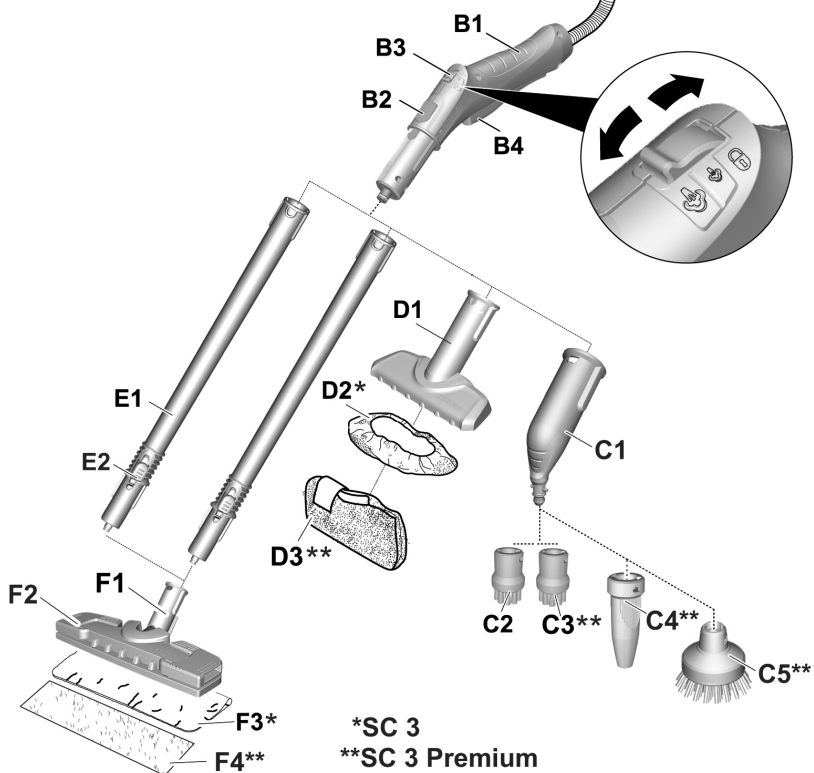
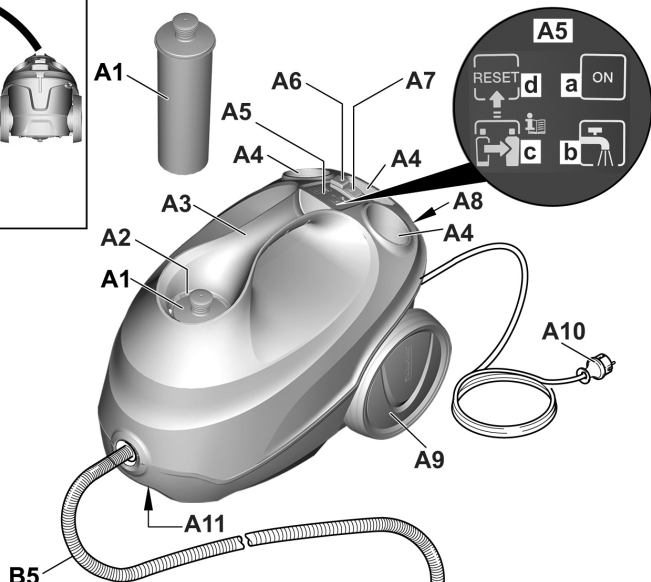
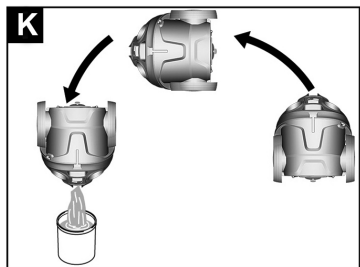


59653970 (02/16)

# Quick Reference







## Contents

General information . . . . .	5
Safety Instructions for Steam Cleaners . . . . .	6
Safety Devices . . . . .	8
Description of the Appliance . . . . .	8
Quick Reference . . . . .	9
Effect descaler and adjustment of water hardness . . . . .	9
Operation . . . . .	10
How to Use the Accessories . . . . .	12
Care and maintenance . . . . .	14
Troubleshooting . . . . .	15
Technical specifications . . . . .	16
Customer Service . . . . .	16

## General information

### Dear Customer,



Please read and comply with these original instructions prior to the initial operation of your appliance and store them for later use or subsequent owners.

### Proper use

Use the steam cleaner only for private households.

The appliance is intended to be used with steam and can be used with the appropriate accessories as described in these operating instructions. You will not need any detergent. Please adhere to the safety instructions.

### Environmental protection



The packaging material can be recycled. Please do not place the packaging into the ordinary refuse for disposal, but arrange for the proper recycling.



Old appliances contain valuable materials that can be recycled. Please arrange for the proper recycling of old appliances. Please dispose your old appliances using appropriate collection systems.

### Notes about the ingredients (REACH)

You will find current information about the ingredients at:

**[www.kaercher.com/REACH](http://www.kaercher.com/REACH)**

## Scope of delivery

The scope of delivery of your appliance is illustrated on the packaging. Check the contents of the appliance for completeness when unpacking.

In the event of missing accessories or any transport damage, please contact your dealer.

## Spare parts

Use only original KÄRCHER spare parts. You will find a list of spare parts at the end of these operating instructions.

## Warranty

The warranty terms published by the relevant sales company are applicable in each country. We will repair potential failures of your appliance within the warranty period free of charge, provided that such failure is caused by faulty material or defects in manufacturing. In the event of a warranty claim please contact your dealer or the nearest authorized Customer Service centre. Please submit the proof of purchase. (See address on the reverse)

## Safety Instructions for Steam Cleaners

- *Apart from the notes contained herein the general safety provisions and rules for the prevention of accidents of the legislator must be observed.*
- *Warnings and notes that are attached on the appliance provide important notes for the safe operation.*

### Hazard levels

#### **⚠ DANGER**

*Pointer to immediate danger, which leads to severe injuries or death.*

#### **⚠ WARNING**

*Pointer to a possibly dangerous situation, which can lead to severe injuries or death.*

#### **⚠ CAUTION**

*Pointer to a possibly dangerous situation, which can lead to minor injuries.*

#### **ATTENTION**

*Pointer to a possibly dangerous situation, which can lead to property damage.*

### Electric components

#### **⚠ DANGER**

- *Never use the appliance in pools containing water.*
- *Do not level the steam jet directly at equipment that contains electrical components, such as the inside of ovens.*
- *Check the appliance and the accessories, especially the power cord, the safety lock and the steam hose for proper condition.*  
*Do not use the appliance in case of damage.*
- *If the power cord is damaged, please arrange immediately for the exchange by an authorized customer service or a skilled electrician.*
- *Promptly replace a damaged steam hose. You may only use a steam hose that is recommended by the manufacturer.*
- *Never touch the mains plug and the socket with wet hands.*

- *Always disconnect the mains plug and allow the steam cleaner to cool down before performing any maintenance work.*

- *Repair works may only be performed by the authorized customer service.*

- *The connection between the power cord and extension cable must not lie in water.*

#### **⚠ WARNING**

- *The appliance may only be connected to an electric supply that has been installed by an electrician in accordance with IEC 60364.*

- *The appliance may only be connected to alternating current. The voltage must correspond with the type plate of the appliance.*

- *In wet rooms, e.g. bathrooms, connect the appliance to sockets with a series connected RCD adapter.*

- *Only use splash-proof electrical extension cables with a minimum cross-section of 3x1 mm<sup>2</sup>*

- *Replace couplings at the power cord or extension cable only with couplings that have the same protection against splashing water and the same mechanical strength.*

- *Be very careful while cleaning tiled walls with sockets.*

#### **⚠ CAUTION**

- *Make sure that the power cord or extension cable is not damaged by running over, pinching, dragging or the like. Protect the power cords from heat, oil, and sharp edges.*

## Safe handling

### **⚠ DANGER**

- *The user must use the appliance as intended. The person must consider the local conditions and must pay attention to other persons in the vicinity when working with the appliance.*
- *The appliance may not be operated in explosive atmospheres.*
- *If the appliance is used in hazardous areas the corresponding safety provisions must be observed.*
- *Do not use the appliance if it fell down, is visibly damaged or leaking.*
- *Never use the appliance to clean objects containing hazardous substances (e.g. asbestos).*
- *Never touch the steam jet from a short distance with your hands and never direct the steam jet to persons or animals (risk of scalds).*
- *Do not fill in detergents or other additives!*

### **⚠ WARNING**

- *The appliance must not be operated by children or persons who have not been instructed accordingly.*
- *This appliance is not intended for use by persons with limited physical, sensory or mental capacities or lacking experience and/or skills, unless such persons are accompanied and supervised by a person in charge of their safety or they have received precise instructions on the use of this appliance and have understood the resulting risks.*
- *Children must not play with this appliance.*
- *Supervise children to prevent them from playing with the appliance.*
- *Keep appliance out of reach of children as long as it is switched on or hasn't cooled down.*
- *Operate or store the appliance only in accordance with the description or illustration!*
- *Do not wedge the steam lever / the steam button during operation.*

- *Only switch on the appliance when there is water in the boiler. Otherwise the appliance might overheat (see Troubleshooting).*
- *Hot water may drip out of the accessory parts while you are detaching them! Allow appliance to cool down.*
- *Never separate accessories from the appliance as long as steam is escaping!*

### **⚠ CAUTION**

- *Create stability for the appliance prior to any work on or with the appliance to prevent accidents or damage.*
- *Never fill solvents, solvent-containing liquids or undiluted acids (e.g. detergents, benzene, paint thinner, and acetone) into the boiler as these substances affect the materials used on the appliance.*
- *Never leave the appliance unattended as long as it is in operation.*

### **ATTENTION**

- *In case of longer breaks and after use, switch the appliance off at the main switch / appliance switch and pull the mains plug.*
- *Do not operate the appliance at temperatures below 0 °C.*
- *Protect the unit from rain. Do not store outside.*

### **⚠ CAUTION**

- *Place the appliance on a solid, even ground to ensure a safe footing.*
- *Do not carry the appliance during cleaning work.*

## Symbols on the machine

### **CAUTION**

Symbols depending on unit type.



*Surfaces are liable to get hot during use!*



*Danger of scalding by steam!*



*Please read the operating instructions!*

## Safety Devices

### **CAUTION**

*Safety devices protect the user and must not be modified or bypassed.*

#### Pressure controller

Should excessive pressure occur in case of an error, a safety valve ensures the release into the environment.

#### Fuse

Should the device be in danger of overheating, the fuse disconnects the device from the mains.

If the fuse or the safety valve responds in case of an error, please contact the competent KÄRCHER customer service.

## Description of the Appliance

### → Illustrations on fold-out page 4!



- A1 Descaler cartridge
- A2 Filling hole for water
- A3 Carrying handle
- A4 Holder for accessories
- A5 Display
  - a Indicator lamp (green) – line voltage is on
  - b Indicator light (red) - water shortage
  - c Indicator light (red) - replace descaler cartridge
  - d RESET button - set water hardness
- A6 Switch - ON
- A7 Switch - OFF
- A8 Storage holder for floor nozzle
- A9 Running wheels (2 ea.)
- A10 Mains cable with mains plug
- A11 Steering roller
- B1 Steam gun
- B2 Unlocking button
- B3 Selector switch for the steam volume (with child protection)
- B4 Steam lever
- B5 Steam hose
- C1 Detail nozzle
- C2 Round brush      Black
- C3 Round brush      Red
- C4 Power nozzle
- C5 Round brush      Large
- D1 Hand nozzle
- D2 Terry cloth cover
- D3 Microfibre cloth cover
- E1 Extension tubes (two tubes)
- E2 Unlocking button
- F1 Floor nozzle
- F2 Retaining clip
- F3 Terry floor cloth
- F4 Microfibre floor cloth



## Quick Reference

### → Illustrations on Page 2

#### Illustration 1

- Insert the descaler cartridge into the opening and push it until it is tightly fitted.

#### Illustration 2

- Fill the water tank with a maximum of 1 litre of fresh tap water.

#### Illustration 3

- Plug in the mains plug.
- Press the ON switch to turn on the appliance.

#### Illustration 4

- Indicator lamp glows green.  
The device is ready for use after approx. 30 seconds.

#### Illustration 5

- Set water hardness prior to first use.

### ATTENTION

*In order to guarantee the optimum functionality of the descaler cartridge, the device must be set to the local water hardness prior to the first operation.*

*Further information concerning the device setting can be found in Chapter "Effect descaler cartridge and setting of water hardness".*

#### Illustration 6

- Connect the accessories to the steam gun.
- Operate steam lever.

## Effect descaler and adjustment of water hardness

### Effect descaler cartridge

### ATTENTION

*Only work with a cartridge inserted.*

- As soon as the device is filled with water and is taken into operation, the descaling effect of the cartridge is activated.
- Lime that is contained in the water is absorbed by the granules in the cartridge. This prevents the calcification of the device. An additional device descaling is thus not required.

### Note

The granules in the cartridge can change their colour after contact with water; this is related to the mineral content in the water. This discolouration is harmless and does not have any negative effects on the device, cleaning work or the functionality of the cartridge.

### Water hardness levels and flashing impulses

### Note

The hardness of the tap water can be inquired at your water management office or the municipal utilities.

Degree of hardness	° dH	mmol/l	Number of flashing impulses	Interval of flashing impulses
I soft	0- 7	0-1,3	1x	4 seconds
II medium	7-14	1,3-2,5	2x	
III hard	14-21	2,5-3,8	3x	
IV very hard	>21	>3,8	4x	

## Setting of the water hardness

### ATTENTION

*In order to guarantee the optimum functionality of the descaler cartridge, the device must be set to the local water hardness prior to the first operation.*

*This is done via the RESET button.*

### Notes

- The device is set to the highest water hardness level (level IV) by default.
- After completion of the water hardness setting, it remains saved until a new setting (e.g. after relocation) is necessary.
- During the setting no pause of more than 15 seconds may take place. Otherwise the device is automatically set to the water hardness selected last or the highest water hardness with initial start-up.

Please observe the following procedure:

- ➔ Connect the mains cable to the power supply system.
- ➔ The device must be switched off prior to the setting.
- ➔ Push the RESET button and hold it down during the start-up of the device.
- ➔ After 2 seconds the indicator light is blinking and signals the current setting of the water hardness via the number of impulses.
- ➔ By repeatedly pressing the RESET button, the setting of the water hardness level changes.
- ➔ As long as the RESET button is pressed, the flashing impulse for the relevant water hardness level is not shown.
- ➔ As soon as the button is released, the flashing impulse appears for the output of the selected water hardness.
- ➔ If the water hardness is set to the desired level, hold down the RESET button for 3 seconds so that the setting is saved.
- ➔ The saving process is displayed by the lighting up of the indicator light for the water hardness.

### ATTENTION

*If the device is used in another area with a different water hardness (e.g. after relocation), the water hardness must be reset.*

## Operation

➔ Illustrations on fold-out page 3!



## Assemble the appliance

Illustration **A**

- ➔ Insert steering roller and running wheels and lock them.

Illustration **B**

Illustration **C**

- ➔ Connect the required accessories (see Chapter "How to use the accessories") to the steam gun. Insert the open end of the accessory on the steam gun and push onto the steam gun until the unlocking button of the steam gun locks into place.

Illustration **D**

- ➔ Use the extension tubes if necessary. To do so, connect one or both extension tubes to the steam gun. Insert the required accessories on the free end of the extension tube.

## Removing the Accessories

- ➔ Move the selector switch for the steam volume back (steam lever locked).

Illustration **E**

- ➔ To detach the accessory parts, press the unlocking button and pull the items apart.

## Filling the Water Reservoir

The water reservoir may be refilled at any time.

### ATTENTION

*Do not use condensation water from the drier!*

*Do not fill with detergent or other additives (for example fragrances)!*

➔ Fill the water tank with a maximum of 1 litre of fresh tap water.

## Turning on the Appliance

### ATTENTION

*In order to guarantee the optimum functionality of the descaler cartridge, the device must be set to the local water hardness prior to the first operation.*

*Further information concerning the device setting can be found in Chapter "Effect descaler cartridge and setting of water hardness".*

- ➔ Place the unit securely on a firm surface.
- ➔ Insert the mains plug into a socket.
- ➔ Press the ON switch to turn on the appliance.
- ➔ Indicator lamp glows green.
- ➔ The device is ready for use after approx. 30 seconds.

### Note

During the first steaming after removal and reinserting the cartridge the blast of steam can still be a little weak. The device requires a short break-in period, as the cartridge has to be filled with water first. This is why the steam discharge is unsteady at first and single water drops may exit. The amount of escaping steam increases continuously until the maximum amount is reached after approx. 30 seconds.

## Refilling Water

In case of a water shortage in the water tank, the water shortage indicator light is continuously on.




- ➔ Fill the water reservoir  
The descaler cartridge remains fixated in the device.

## Notes

- Fill in the water via the lid of the descaler cartridge. This way a steady steam output is always guaranteed.
- As soon as the water tank is filled with water again, the red indicator light goes out.
- The device is equipped with a dry run protection for the pump. Should the pump run dry for a longer period of time, e.g. because of an incorrectly installed cartridge, the pump switches off and the indicator light for water shortage flashes red.
- In order to operate the device again, the device must be switched off and back on. In the process it must be ensured that the cartridge is inserted correctly and there is enough water in the water tank.

## Adjusting the Steam Quantity

Use the selector switch for the steam volume to regulate the discharged steam. The selector switch has three positions:

	Maximum steam volume
	Reduced steam volume
	No steam - child protection <b>Note:</b> <i>In this lever position, the steam lever cannot be used.</i>

- ➔ Set selector switch to the required steam volume.
- ➔ While operating the steam switch, always direct the steam gun at a separate piece of cloth until the steam is emitted evenly.

## Interrupting operation

If the device is not used for more than 20 minutes, please switch off the device for energy conservation purposes.

- ➔ Press the OFF switch to turn off the appliance.

## Turning Off the Appliance

Illustration **G**

- Press the OFF switch to turn off the appliance.
- Disconnect the mains plug from the socket.

Illustration **H**

- Push the steam switch until steam discharge stops.
- The device is now free of pressure.
- Move the child protection unit toward the back (steam lever locked).

### ATTENTION

*If the device is not used for a longer period of time (approx. 2 months), please empty the water tank. This avoids decomposition of the water.*

Illustration **K**

- Completely empty the water tank to remove existing water.

## Storing the Appliance

Illustration **I**

Illustration **J**

- Put the extension pipes into the large accessory compartments.
- Insert the manual nozzle and detail nozzle onto each extension pipe.
- Attach the big round brush to the small detail nozzle.
- Put the small round brush and nozzles into the medium accessory compartment.
- Hook the floor nozzle into the parking position.
- Wrap the steam hose around the extension pipes and insert the steam pistol into the floor nozzle.

## How to Use the Accessories

### Important application instructions

#### Cleaning floor surfaces

It is recommended to sweep or vacuum the floor prior to using the steam cleaner. This way, the floor is already cleared of dirt/loose particles prior to the wet cleaning.

#### Refreshing textiles

Prior to treatment with the steam cleaner, always check the reaction of the textiles in an inconspicuous location: Steam at first, then let dry and then check for colour or shape changes.

#### Cleaning of Coated or Lacquered Surfaces

When cleaning painted or plastic-coated surfaces, as found on kitchen and living room furniture, doors, parquet; wax, furniture polish, plastic surfaces or paint can come loose or stains can be created. When cleaning these surfaces, briefly steam a cloth and wipe the surfaces with it.

### ATTENTION

*Never direct the steam jet at glued edges as the edge band may loosen. Do not use the steam cleaner on unsealed wooden or parquet floors.*

#### Cleaning of Glass

In case of low outside temperatures, especially in the winter, warm up the window pane by slightly steaming the entire glass surface. This will prevent tensions on the surface which might lead to glass breakage.

Then clean the window surface with the hand nozzle and attachment. Use a squeegee to remove the water or wipe the surfaces dry.

### ATTENTION

*Do not direct steam onto the sealed locations of the window frame to prevent damage.*

## Steam gun

You can use the steam gun without any additional accessories, e.g.:

- to remove light wrinkles from hanging clothes by steaming them at a distance of 10 to 20 cm.
- to remove dust from plants. Here, keep a distance of 20-40 cm.
- for moist dusting, by briefly steaming the cloth and wiping the furniture with it.

## Detail nozzle


The closer this nozzle is to the contaminated area, the higher the cleaning effect, as the temperature and the steam are highest at the nozzle output. Especially suited for cleaning difficult access locations, joints, fittings, drains, sinks, toilets, blinds and heaters. Heavy lime scale can be drenched in vinegar prior to steam-cleaning. Let the vinegar penetrate for about 5 minutes.

## Round brush (small)

The round brush can be installed onto the detail nozzle as an accessory. Attached brushes can therefore be used to remove heavy soiling.

### ATTENTION

*Not suitable for cleaning sensitive surfaces.*


Illustration 

- Attach the round brush to the detail nozzle.

## Power nozzle

The power nozzle can be installed onto the detail nozzle as an accessory.

The power nozzle increases the emission speed of the steam. Therefore, it is well-suited for cleaning very tough dirt, blowing out corners, grooves, etc.

Illustration 


- Attach the power nozzle to the detail nozzle according to the round brush.

## Round brush (big)

The round brush can be installed onto the detail nozzle as an accessory. This round brush allows to clean large rounded surfaces (e.g. sink, shower tray, bathtub, kitchen sink).

### ATTENTION

*Not suitable for cleaning sensitive surfaces.*

Illustration 

- Attach the round brush to the detail nozzle.

## Hand nozzle

Illustration 


- Install hand nozzle on steam gun. Pull the cloth cover over the hand nozzle. Especially well-suited for small washable areas, shower stalls and mirrors.

## Floor nozzle

Suited for all washable walls and floor coverings, e.g. stone floors, tiles and PVC floors. Work slowly on very dirty surfaces to allow the steam to act on the dirt for a longer period of time.

### Note

Detergent residue or care emulsions that are still present on the surface to be cleaned can lead to streaks during steam cleaning. However, these will disappear with repeated cleaning procedures.

Illustration 

- Attach the floor cloth to the floor nozzle.

- 1 Place the floor nozzle on top of the floor cloth.  
Depending on model - fold before the floor cloth the long way.
- 2 Open holding clamps.
- 3 Place the cloth ends into the openings.
- 4 Close the holding clamps.

### ⚠ CAUTION

*Do not insert fingers between the clamps.*

## Parking the floor nozzle

Illustration 

- During work breaks, hook the floor nozzle into the parking holder.

## Care and maintenance

### Emptying the water tank

#### ATTENTION

*If the device is not used for a longer period of time (approx. 2 months), please empty the water tank. This avoids decomposition of the water.*

- ➔ Disconnect the mains plug from the socket.
- ➔ Remove the accessories from the accessory compartments.
- ➔ Remove the cartridge from the device.

Illustration **K**

- ➔ Completely empty the water tank to remove existing water.

### Replacement descaler cartridge

#### ATTENTION

*The replacement intervals of the cartridge (display indicator light) must be complied with; otherwise the service life of the device is reduced.*

*If the cartridge is not replaced in the indicated intervals, irreparable damage can be caused on the device.*

#### Note

- The replacement intervals depend on the local water hardness. Areas with harder water (e.g. III/IV) have a shorter replacement interval than areas with softer water (e.g. I/II).

### Indicator light display at the end of the operating time

The necessary cartridge replacement is indicated via the indicator light "Replacement cartridge" by the following actions:

- Two hours before the end of the operating time the necessary replacement is indicated by flashing.
- One hour before the end of the operating time the indicator light flashes faster.
- If the operating time of the cartridge is completely depleted, the indicator light "Replacement cartridge" is continuous-

ly on and the device switches itself off in order to prevent damage to the device.

### Insert new descaler cartridge.

- ➔ Press the OFF switch to turn off the appliance.
- ➔ Remove the cartridge from the device.
- ➔ Insert new cartridge into the device.
- ➔ Press the ON switch to turn on the appliance.
- ➔ Hold down the RESET button for 4 seconds.  
Then the indicator light "Replacement descaler cartridge" goes out and the operating time of the cartridge starts again.
- ➔ Allow the device to warm up.
- ➔ Then hold down the steam lever for approx. 30 seconds to bleed the cartridge.

#### Note

During the first steaming after removal and reinserting the cartridge the blast of steam can still be a little weak. The device requires a short break-in period, as the cartridge has to be filled with water first. This is why the steam discharge is unsteady at first and single water drops may exit. The amount of escaping steam increases continuously until the maximum amount is reached after approx. 30 seconds.

#### ATTENTION

*When replacing the cartridge, ensure that there is no confusion and the old cartridge is not reinserted.*

## Care of the Accessories

### Note

The floor cleaning cloth and the cloth cover have been pre-washed and can be used immediately for working with the steam cleaner.

- You can wash dirty floorcloths and cloth covers in the washing machine at 60°C. Do not use a liquid softener as this would affect the ability of the cloths to pick up dirt. You may tumble dry the Terry cloths. The microfiber cloths are not suitable for the tumble.

## Troubleshooting

Often, failures have simple causes and you can do the troubleshooting yourself using the following overview. If you are in doubt or if the failure is not listed here please contact the authorized customer service.

### No steam

#### Indicator light - water shortage is continuously red

No water in the water reservoir.

- Refill water

#### Indicator light - water shortage flashes red

Dry run protection of the pump is activated.

- Switch on/off the appliance again.
- Ensure that the cartridge is inserted correctly and there is enough water in the water tank.

#### No / little steam despite enough water in the water tank

Descaler cartridge not inserted or inserted incorrectly.

- Insert cartridge or ensure tight / correct seating.

Descaler cartridge was removed during the filling of the water or a new descaler cartridge was inserted.

- Leave the cartridge in the device during filling.

- Hold the steam lever down permanently, after 30 seconds the full steam output is reached.

#### Steam lever cannot be pressed anymore

Steam switch is secured with the lock / child-proof lock.

- Move the selector switch for the steam volume to the front.

#### Indicator light "Replacement descaler cartridge" is on / flashes red

#### Operating time of the cartridge completed soon

- Insert new cartridge and reset the maintenance display.  
See Chapter "Insert new descaler cartridge".

#### RESET button was not pushed after the replacement of the cartridge

- Hold down the RESET button for 4 seconds after inserting the cartridge.

#### The device switches off automatically

#### Operating time of the cartridge over

- Insert new cartridge into the device.  
See Chapter "Insert new descaler cartridge".

#### RESET button was not pushed after the replacement of the cartridge

- Hold down the RESET button for 4 seconds after inserting the cartridge.

## Technical specifications

### Power connection

Voltage	220-240 V
	1~50-60 Hz

Protection class	IPX4
------------------	------

Protective class	I
------------------	---

### Performance data

Heating output	1900 W
----------------	--------

Operating pressure max.	0,35 MPa
-------------------------	----------

Heating time	30 Sec- onds
--------------	-----------------

Steam volume	
Continuous steaming	40 g/min
Steam push max.	100 g/min

### Filling quantity

Water reservoir	1,0 l
-----------------	-------

### Dimensions

Weight (without accessories)	3,2 kg
------------------------------	--------

Length	360 mm
--------	--------

Width	236 mm
-------	--------

Height	252 mm
--------	--------

***Subject to technical modifications!***

## Customer Service

### Australia

KÄRCHER Pty. Ltd.  
40 Koornang Road  
Scoresby, Victoria 3179

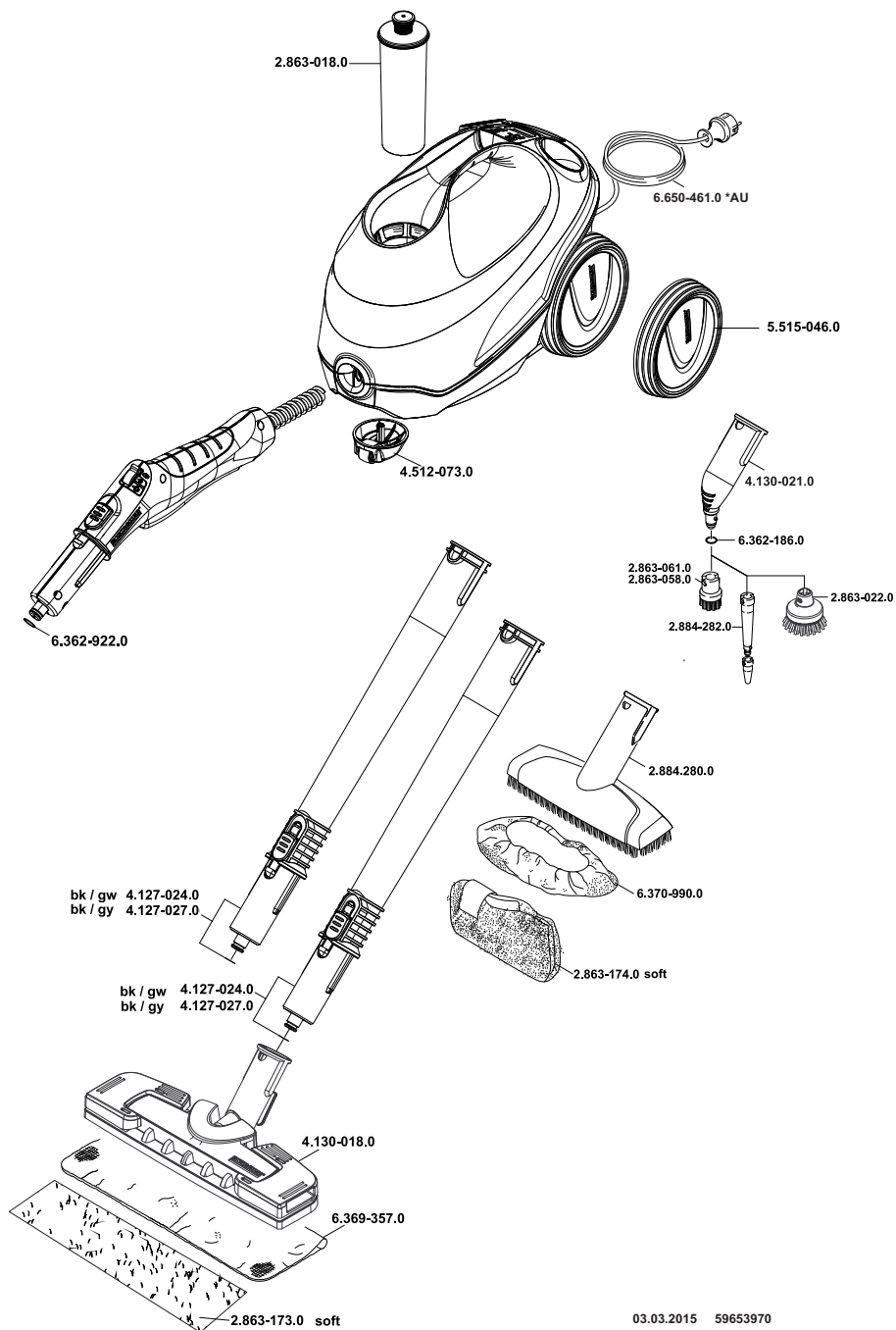
1800 675 714 (Free Call)  
[www.karcher.com.au](http://www.karcher.com.au)

### New Zealand

Karcher Ltd.  
12 Ron Driver Place  
East Tamaki, Auckland

(09) 274-4603  
[www.karcher.co.nz](http://www.karcher.co.nz)







<http://www.kaercher.com/dealersearch>



**Alfred Kärcher GmbH & Co. KG**

Alfred-Kärcher-Str. 28 - 40

71364 Winnenden (Germany)

Tel.: +49 7195 14-0

Fax: +49 7195 14-2212