

SINGLE SHOT



USERS MANUAL



WARNING: READ THE INSTRUCTIONS AND SAFETY PRECAUTIONS IN THIS MANUAL CAREFULLY BEFORE USING THE FIREARM.

ROCK ISLAND ARMORY

USERS MANUAL SINGLE SHOT SAFETY, INSTRUCTION AND PARTS MANUAL



As a responsible owner of this firearm, you must read the instructions and warnings in this manual carefully. Before using this firearm, make sure you understand thoroughly the contents of this manual.

This manual must always be in the firearms carrying case whenever the owner/user brings it or when it transfers ownership. A copy of this manual is available upon request from:



RIA Recommendation For Shotgun Break In Procedures

- ***Quality shotshells only***
- ***Minimum 2 ³/₄" , 3 dram shotshell to be used***
- ***Minimum velocity 1250 fps***
- ***Minimum 1 ¹/₈ oz of shot***
- ***Expect some malfunctions in first 25-50 rounds***
- ***Minimum of 250 rounds before trying lighter load***
- ***Avoid light recoil or reduced recoil loads***
- ***Due to variation in ammo and firearms some gun may work with lighter loads and some may not***
- ***Please complete break in period of 100 rounds with recommended loads before sending warranty claim for cycling issues***
- ***YouTube has several videos on customization for lighter loads however custom work may void warranty***

ARMSCOR PRECISION INTERNATIONAL

150 N Smart Way, Pahrump NV 89060

E-mail: support@armscor.com

TABLE OF CONTENTS

1 Statement of Liability

1 State-By-State Warnings

2 Safety Precautions

3 Important Warnings

HEALTH&SAFETY

4 Tech Specs

5 Basic Parts

6 Exploded Views

ABOUT THE FIREARM

Operating Instructions 7
Disassembling The Shotgun.....7
Loading With Cartridges.....8

Usage of Choke Tubes 9

Ordering Parts 10

Warranty 11

Notes 12

MAINTENANCE



STATEMENT OF LIABILITY

This shotgun is classified as a firearm or dangerous weapon. It is expressly understood that we assume no liability for its resale or unsafe handling under local laws and regulations. Armscor assumes no responsibility for physical injury or property damage resulting from either intentional or accidental discharge, or for the function of the firearm subjected to influence beyond their control. Armscor will honor no claims which may result from careless handling, unauthorized adjustments, defective or improper ammunition, corrosion or neglect. Examine your firearm carefully at the time of purchase. It should be forwarded immediately to the factory or its sales agent if any adjustment of any kind is required.

State-By-State Warnings



CALIFORNIA STATE WARNING

CHILDREN ARE ATTRACTED TO AND CAN OPERATE FIREARMS THAT CAN CAUSE SEVERE INJURIES OR DEATH. PREVENT CHILD ACCESS BY ALWAYS KEEPING FIREARMS LOCKED AWAY AND UNLOADED WHEN NOT IN USE. IF YOU KEEP A LOADED FIREARM WHERE A CHILD OBTAINS AND IMPROPERLY USES IT, YOU MAY BE FINED OR SENT TO PRISON. IT IS UNLAWFUL TO USE A MAGAZINE WITH A CAPACITY OVER 10 ROUNDS.



MASSACHUSETTS STATE WARNING

IT IS UNLAWFUL TO CARRY ANY MAGAZINE OR BELT WHICH HOLDS MORE THAN TEN ROUNDS, UNLESS AUTHORITY IS GRANTED BY THE BOSTON POLICE COMMISSIONER. IT IS UNLAWFUL TO STORE OR KEEP A FIREARM, RIFLE, SHOTGUN OR MACHINE GUN IN ANY PLACE UNLESS THAT WEAPON IS EQUIPPED WITH A TAMPER RESISTANT SAFETY DEVICE OR IS STORED OR KEPT IN A SECURELY LOCKED CONTAINER.



NEW YORK STATE WARNING

IT IS UNLAWFUL TO CARRY ANY MAGAZINE OR BELT WHICH HOLDS MORE THAN SEVEN ROUNDS, UNLESS AUTHORITY IS GRANTED BY THE STATE OF NEW YORK. THE USE OF A LOCKING DEVICE OR SAFETY LOCK IS ONLY ONE ASPECT OF RESPONSIBLE FIREARMS STORAGE FOR INCREASED SAFETY, FIREARMS SHOULD BE STORED UNLOADED AND LOCKED IN A LOCATION THAT IS BOTH SEPARATED FROM THEIR AMMUNITION AND INACCESSIBLE TO CHILDREN AND OTHER UNAUTHORIZED PERSONS.

02 | SAFETY PRECAUTIONS

Safety must be the first and constant consideration of every person who handles firearms and ammunition. The person with a firearm in his possession has an important responsibility. He/She must know how to use his/her firearm safely:

1. Always keep the muzzle pointed at a safe direction. Watch the muzzle at all times. Never point a gun, accidentally or intentionally, at any person or anything you do not intend to shoot. Identify the target before shooting; do not shoot at sounds.
2. Always treat a gun as if it is loaded – it may be!
3. Keep your finger off the trigger while operating the action and at all other times until you are ready to shoot.
4. Keep the safety “on” or in the “safe” position at all times until you are ready to fire. Do not rely on your gun’s safety, the safety on any gun is a mechanical device and is not intended as a substitute for common sense or safe gun handling.
5. Learn how your gun functions and handles. If you do not thoroughly understand the proper use and care of your gun, seek the advice of someone who is knowledgeable.
6. Do not alter or modify any part of the firearm.
7. Store guns unloaded, separate from any ammunition, and out of the reach of children.
8. Be sure the barrels is clear of any obstructions before loading. Make it a habit to check the barrel every time before loading.
9. Be sure you have and use the proper ammunition.
10. Wear protective shooting glasses, adequate ear protection and gloves when shooting.
11. Never climb or jump over anything, such as a tree, fence, or ditch, with a loaded gun. Open the barrel, remove the shells and hand the gun to someone else or place it on the ground on the other side of the obstacle before crossing it yourself. Do not lean a gun against a tree or other object; it could fall and possibly discharge.

12. Do not shoot at a hard surface or at water. Bullet and shot can ricochet or bounce off and travel in unpredictable directions with great velocity.

13. Never transport a loaded gun. Do not place a loaded gun into a vehicle. The gun should be unloaded and placed into a case when not in use.

14. Never consume intoxicating beverages and/or drugs before or during shooting.

WARNING

DO NOT ATTEMPT TO USE ANY FIREARM WITHOUT HAVING A COMPLETE UNDERSTANDING OF ITS PARTICULAR CHARACTERISTICS AND SAFE USE. READ AND UNDERSTAND THIS MANUAL CAREFULLY BEFORE USAGE OF YOUR SHOTGUN.

WARNING

YOU SHOULD NEVER DEPEND ON A SAFETY MECHANISM OR ANY OTHER MECHANICAL DEVICE TO JUSTIFY CARELESS AND IMPROPER HANDLING.

WARNING

THIS FIREARM WAS MANUFACTURED TO PERFORM PROPERLY WITH THE ORIGINAL PARTS AND MAGAZINES AS DESIGNED. PLEASE MAKE SURE ANY PARTS YOU BUY ARE INSTALLED CORRECTLY AND THAT NEITHER REPLACEMENTS NOR ORIGINALS ARE ALTERED OR CHANGED. PUTTING A FIREARM TOGETHER INCORRECTLY OR WITH MODIFIED PARTS CAN RESULT IN DAMAGED FIREARM, DANGER, AND INJURY OR DEATH. ANY MODIFICATIONS TO FIREARM WILL VOID FACTORY WARRANTY.

03 | SAFETY PRECAUTIONS

WARNING

CHILDREN ARE ATTRACTED TO FIREARMS, AND MIGHT BE ABLE TO OPERATE THEM, THEY CAN CAUSE SEVERE INJURIES AND EVEN DEATH, TO THEMSELVES OR OTHERS. PREVENT CHILDREN FROM ACCESS, ALWAYS KEEP YOUR FIREARMS LOCKED AWAY, UNLOADED AND OUT OF REACH OF CHILDREN WHEN NOT IN USE AT ANY TIME.

WARNING

THE FIREARM SHOULD BE STORED IN ROOMS WITH A DRY ATMOSPHERE AND MINIMUM HUMIDITY. IT SHOULD NOT BE STORED ENCASED IN LEATHER OR ANYTHING THAT WILL ATTRACT AND HOLD MOISTURE, CAUSING IT TO RUST.

WARNING

DO ALL PROCEDURES (DISASSEMBLY, CLEANING AND OTHER MAINTENANCE) ONLY WHEN THE FIREARM IS UNLOADED. BE SURE THAT THE MAGAZINE TUBE, RECEIVER AND CHAMBER ARE EMPTY WHILE YOU ARE PROCEEDING. CHECK EJECTION PORT, LOADING PORT AND CHAMBER VISUALLY.

WARNING

ALL PRODUCTS HAVE 3" (76MM) CHAMBERS (EXEPT OTHERWISE STATED). YOU CAN SEE MARKS ABOUT GAUGES AND CHAMBER LENGHT ON THE GUN. EVERY SHOTGUN HAS PASSED DURABILITY TEST WITH SPECIAL HIGH PRESSURE CARTRIDGES.

WARNING

WHEN STORING THE GUN FOR A PROLONGED PERIOD OF TIME, IT IS NECESSARY TO OIL IT HEAVILY WITH AN ACID-FREE LUBRICANT. THE EXTERNAL PARTS MUST BE COATED WITH AN ANTI-RUST OIL OR GREACE TO PREVENT MOISTURE CAUSING THE PARTS TO RUST AND MALFUNCTION. BEFORE USAGE, THE SHOTGUN MUST BE CLEANED AND WIPED DRY AGAIN.

04 | TECH SPECS

Model	TRADITION
Caliber	12 / 20 / .410 Gauge
Chamber	2 ³ / ₄ / 3"
Action	Single Shot
Capacity	1 Rounds
Choke	Mobile / Slug / Muzzle Brake
Barrel	Ribbed
Barrel Length	508mm / 20"
Overall Length	930mm / 36.6"
Overall Width	40mm / 1.57"
Overall Height	120mm / 4.7"
Front Sight	Bead
Weight, Empty	2.35 kg / 5.18 lbs
Weight, Loaded	2.40 kg / 5.29 lbs
Finish	Chrome / Black Nickel
Stock	Polymer Buttstock With Rubber Buttpad and Polymer Forend (Optional: Walnut Paint)

CALIBER

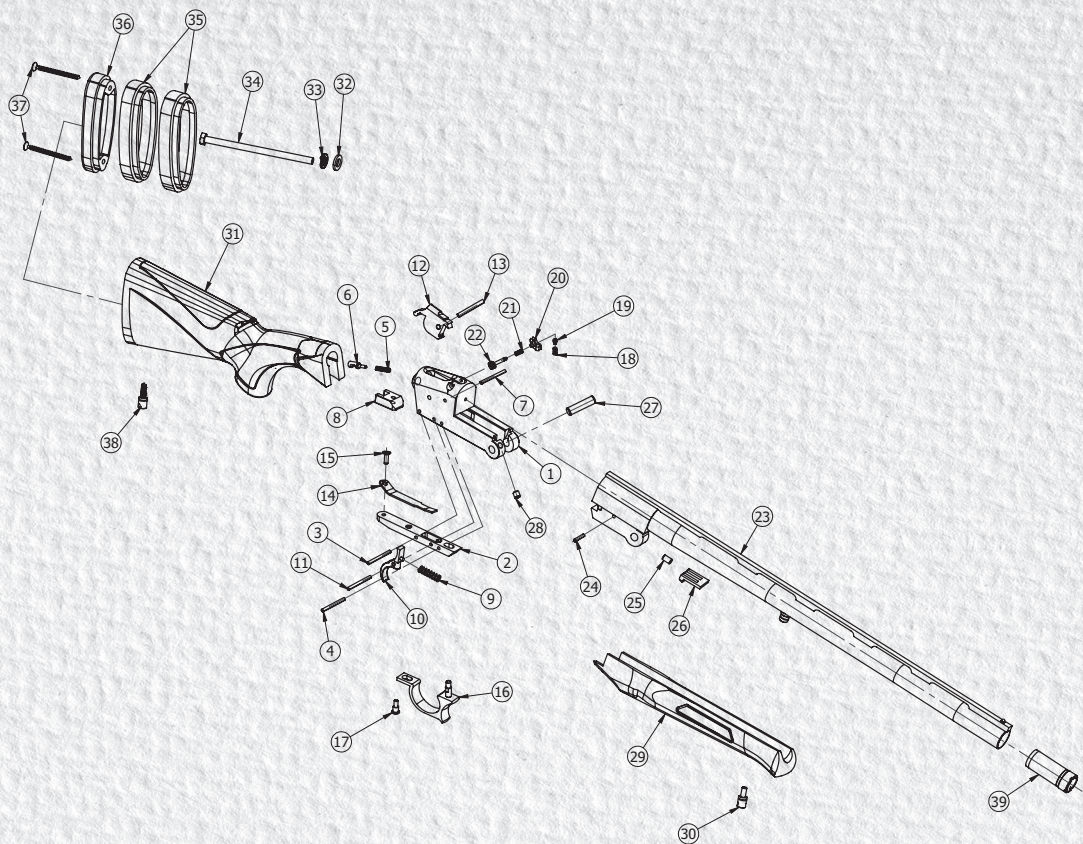


05 | BASIC PARTS

P.NO	PART NAME
1	Receiver
2	Tail
3	Ø3 Trigger Group Pin
4	Ø3 Trigger Group Pin
5	Firing Pin Spring
6	Firing Pin
7	Ø3 Pin
8	Barrel Catch
9	Trigger Spring
10	Trigger
11	Ø3 Trigger Group Pin
12	Hammer
13	Ø4 Hammer Pin
14	Hammer Spring
15	Hammer Spring Screw
16	Trigger Guard
17	Trigger Guard Screw
18	Rear Sight Spring
19	Rear Sight Ball
20	Rear Sight
21	Rear Sight Spring
22	Rear Sight Adjuster Screw
23	Barrel with Rib
24	Ø3 Pin
25	Ejector Sear Pin

P.NO	PART NAME
26	Ejector Sear
27	Pivot Pin
28	M6 Screw
29	Forend
30	Sling Swivel
31	Stock
32	Connection Washer
33	Stock Bolt Lock Washer
34	Stock Bolt
35	Recoil Pad Extensions
36	Recoil Pad
37	Recoil Pad Screw
38	Sling Swivel
39	Mobile Choke (Optional)

06 | EXPLODED VIEWS



LOADING THE FIREARM



- 1) Point the muzzle in a safe direction.
- 2) Ensure firearm is unloaded.

- 1) Pull the trigger guard in arrow direction.
- 2) Now the the barrel break is unlocked and you can break the barrel.



- 3) Feed the chamber with a proper cartridge.



- 4) Close the barrel to cock your firearm



- 5) As long the hammer isn't set the shotgun can not fire.



- 6) To make your shotgun ready to fire cock the hammer.



SETTINGS

- 1) Set the rear sight to your favored.
- 2) position by turning the horizontal adjuster to the right (1) or left (2) sight.



- 3) To choose the low height position push the rear sight down.
- 4) To choose the high height position push the rear sight up.






- 1) Unscrew the screws to remove the recoil pad and to unlock the spacers. You can adjust the length of the buttstock by adding or removing the spacers.
- 2) At this point you can change the mobile choke with the tool. (if available)



USAGE OF CHOKE TUBES

The choke is what controls the openness or tightness of the pattern of your shotgun. The chart below lists the choke available (from open to tight), and the corresponding marks that indicate the choke of your specific shotgun.

MARKING	USAGE OF CHOKE TUBES		NOTCHES
*	FULL	Suitable for longer ranges (DON'T USE SLUGS!)	
***	MODIFIED	Suitable for medium ranges (DON'T USE SLUGS!)	
*****	CYLINDER	Suitable for short ranges	

The threads of the choke tube and the internal threads of the barrel should be cleaned after each use and before installation of the tube.

To install a tube, insert the tube into the barrel and tighten with your fingers. Once the tube is finger-tightened, tighten with the appropriate choke-tube wrench until the tube is snug. DO NOT over tighten or forcefully tighten with wrench.

ORDERING PARTS

Visit RIA website to browse, learn more about and purchase parts and ammunition for all of your Rock Island Armory products.



www.advancedtactical.com



ARMSCORPRECISION



ARMSCORPRECISION



ROCKISLANDARMORY



ARMSCORRIA

WARRANTY REGISTRATION

Armcor's warranty covers its firearms and parts. We offer limited lifetime warranty on our products for their intended purpose. As with any product, abuse, gunsmithing by an unqualified person and normal wear and tear are excluded. Additionally, if the firearm was modified and/or repaired by an unqualified gunsmith without permission from Armcor, then the warranty will be void. If warranty work should be required, return the firearm to the address listed below. There is no refund for the shipping cost. Gunsmithing services are available by registered Armcor Gunsmithers. Please email the address below.

To register your firearm, please go to www.rockislandarmory.com/support-center/warranty/ and complete online warranty form. In comments section, write warranty registration and press submit. You can also go to www.rockislandarmory.com and press warranty section at the bottom.

Armcor Precision International
150 North Smart Way
Pahrump, NV 89060
Email: support@armcor.com

For more information on warranty, visit www.rockislandarmory.com, or email support@armcor.com

IMPORTANT WARRANTY INFORMATION

Our Rock Island Army shotguns are warranted to function only with Factory Ammo and the Original Factory Magazine. Use of Handloads is not covered in Warranty of Repair for the function of the Firearm.

DUE TO THE FIT AND TIGHTNESS OF FIREARM, RIA RECOMMENDS A BREAK-IN PERIOD OF 500 ROUNDS.

THIS IS HOW YOU VOID YOUR WARRANTY

- * Refinishing your RIA firearm
- * Misuse, Mishandling, Dropping your RIA Firearm
- * Firing Remanufactured or Reloaded Ammunition
- * Not properly reassembling your RIA Firearm resulting in damage, ie reverse plugs!
- * Any addition of after market parts
- * Unauthorized repairs done by any other than Rock Island Armory

LIMITS ON WARRANTY (will not cover)

- * Finish, Holster wear, Scratches, Chemical damage
- * After Market Magazines
- * Damage to Factory Magazines
- * Sights not installed by Rock Island Armory
- * Recoil Springs

WE RESERVE THE RIGHT TO CHARGE FOR LABOR, PARTS AND SHIPPING TO RETURN YOUR RIA FIREARM BACK TO FACTORY SPECIFICATIONS IF IT HAS BEEN ALTERED.

RIA

IMPORTS

WWW.ROCKISLANDARMORY.COM

04/2020