



# Dynamics 365 Nonprofit Accelerator v3.0 Release Notes

**Published:** December 2020

**Accelerator Release Version:** v3.0

## Document Purpose

This document details the enhancements and scope delivered as part of Microsoft Tech for Social Impact's December 2020 (v3.0) release of the Microsoft Dynamics 365 Nonprofit Accelerator ("Accelerator").

## Capabilities Included in this December 2020 release:

1. **Volunteer Management** data schema extensions
2. **Assessment Management** data schema extensions, sample application, and related sample data
3. **Frontline Humanitarian Logistics** data schema extensions and related sample data
4. **Frontline Humanitarian Logistics Mapping Guide** for Nonprofits
5. **Architectural enhancements** to scale and simplify the solution foundation and dependent platform capabilities included in the Nonprofit Accelerator

## Value to Nonprofits Delivered in v3.0

We measure our success at Tech for Social Impact by the specific value we deliver to the nonprofit sector. Key value drivers for this December 2020 release include:

Value	Description
<b>Volunteer Management</b>	<ul style="list-style-type: none"><li>• Additional <b>volunteer management</b> extensions will aid partners in building affordable solutions for nonprofits at a time when recruiting and retaining critical volunteers is essential. Organizations can track and recruit for a broad range of engagement opportunities, while volunteers themselves can align their time, talents, and qualifications with available volunteer opportunities. The new volunteer data extensions remove any dependency on Dynamics Project Service Automation (PSA). Now partners can build directly on PowerApps to lower the total cost of ownership to support volunteer engagement.</li></ul>
<b>Assessment Management</b>	<ul style="list-style-type: none"><li>• Our Assessment Management CDM extensions, sample app and sample data provide partners with a foundation to enable frontline workers to accurately, consistently, rapidly and efficiently record detailed observations and answer the</li></ul>

Value	Description
	<p>"who," "where," "what," "how," and "when" questions critical to delivering nimble services.</p> <ul style="list-style-type: none"> <li>• These investments allow disaster organizations to evaluate damage and assess on-the-ground needs to enable easier coordinated field response. The assessment management extensions support nonprofit program and beneficiary management and can be leveraged in tandem with the program management and case management data schema already included in the Common Data Model for Nonprofits.</li> </ul>
<p><b>Frontline Humanitarian Logistics</b></p>	<ul style="list-style-type: none"> <li>• Convened by NetHope, the <b>Frontline Humanitarian Logistics (FHL)</b> initiative produced a data standard designed to reduce the time and cost involved in implementing IT solutions within humanitarian supply chains and encourage interoperability of data, service delivery, and systems across the sector.</li> <li>• NetHope convened a cross-sector group of 24 collaborating academic, public, and private sector organizations which resulted in the development of a <a href="#">Frontline Humanitarian Logistics Data Standard</a>.</li> <li>• The Frontline Humanitarian Logistics data schema in this release aligns item requests, types, and groups to the <a href="#">FHL Data Standard</a> as well as to existing program delivery, donation, and constituent schema in the Common Data Model for Nonprofits to provide donors with exact information about what items are in demand, where the supplies they helped fund with their donations were delivered, and the subsequent impact made to beneficiaries. The ability to report back on donor impact is critical at this time of increased demand for transparency.</li> </ul>
<p><b>Frontline Humanitarian Logistics Mapping Guide</b></p>	<ul style="list-style-type: none"> <li>• The <b>Frontline Humanitarian Logistics Mapping Guide</b> provides guidance to nonprofits and partners on how to put the NetHope convened and nonprofit sector-developed <a href="#">Frontline Humanitarian Logistics Data Standard</a> into practice.</li> <li>• In conjunction with key partners, Microsoft has mapped the FHL Data Standard to the Common Data Model for Nonprofits as part of this release to support organizations who align to these valuable industry standards.</li> </ul>

Value	Description
<p><b>Architecture Enhancements</b></p>	<ul style="list-style-type: none"> <li>• We continue to look for ways to scale our CDM for Nonprofits and Nonprofit Accelerator architecture for rapid adoption.</li> <li>• In the v3.0 release, we reduced the data schema packages and removed all Dynamics dependencies. Therefore, nonprofits will only need a Power Platform SKU to utilize the entire Nonprofit Accelerator. The new architecture gives nonprofits and partners the power to rapidly launch Power Platform applications.</li> <li>• We also stopped releasing the Nonprofit Accelerator CE and Nonprofit Sales packages. They are still available on GitHub in previous releases, but we will not continue to maintain or support these packages.</li> <li>• In addition, the IATI package was rebuilt to remove any Dynamics Sales dependencies allowing nonprofits to use IATI with Power Platform.</li> </ul>

**Additional Benefits:**

1. Additional Program Delivery Investments
  - Provide nonprofits across the globe with Volunteer Management, Assessment Management, and Frontline Humanitarian Logistics building blocks to modernize and automate program delivery and operations workstreams during a time when nonprofits are under increased pressure to deliver programs with greater efficiency.
    - One sample app (Assessment Management) and supporting sample data
    - New Volunteer management data schema with no PSA dependency
2. Nonprofit efficiency gains:
  - Help nonprofits evolve from homegrown legacy systems and spreadsheets used to manage critical areas of finance, operations, and program delivery
  - Automate workloads and tasks that were highly manual and duplicative in the past
3. Resource savings and data interoperability:
  - Save nonprofits money on overall data management costs by helping them to leverage the Common Data Model for Nonprofits, thus ensuring that data in disparate systems is relatable and share in common a standard definition set.
  - Drive more trustworthy and accurate reporting, business intelligence, and data discovery by leveraging the CDM for Nonprofits to enforce standard data definitions across systems.
4. Platform acceleration to benefit partners:

- Accelerate development and sustainability of partner solutions aligned to the Common Data Model for Nonprofits and Nonprofit Accelerator in the areas of nonprofit assessment management, frontline humanitarian logistics, and further expanded volunteer management.
- Increase access of Common Data Model for Nonprofits and Nonprofit Accelerator to global nonprofits of all sizes.
- Streamline, simplify, and scale the existing Nonprofit Accelerator building blocks, ensuring that partners have all the tools needed to publish finished product to AppSource.

## Table of Contents

- 1. Common Data Model Enhancements**
  - a. Volunteer Management Sample App, Portal & Sample Data**
  - b. Assessment Management Sample App & Sample Data**
  - c. Frontline Humanitarian Logistics Data Schema**
- 2. Frontline Humanitarian Logistics Mapping Guide**
- 3. Nonprofit Accelerator Architecture Enhancements**
- 4. Release Assets**
- 5. Mapping Guide**

## 1. COMMON DATA MODEL ENHANCEMENTS

This release includes important extensions to the Common Data Model for Nonprofits in the areas of volunteer management, assessment management and frontline humanitarian logistics. New attributes and entities are detailed below, along with functional requirements, use cases, and “How to” guidance on how leverage and extend the CDM for Nonprofits data schema.

### A. VOLUNTEER MANAGEMENT SAMPLE DATA

A priority goal of the Microsoft Dynamics 365 Nonprofit Accelerator is to aid nonprofit program staff in creating and managing a lifecycle of volunteer opportunities, tracking volunteers through every stage of their engagement and creating volunteer schedules. These extensions come at a critical time when nonprofits are relying heavily on volunteers to help serve the greater need among their beneficiaries. The Nonprofit Accelerator v3.0 release enables this through the addition of nine new volunteer-oriented entities and related attributes.

#### Personas Served:

- **Volunteer Manager/Leader:** these individuals are the primary liaison between the nonprofit organization and the volunteers who serve with their organization. They set up volunteer opportunities, communicate frequently with volunteers and must be able to manage multiple schedules and volunteer opportunities.
- **Volunteer:** these individuals voluntarily offer their time, experience or knowledge for a service or undertaking and need an easy way to manage profile information, sign up for available opportunities, and provide preferences to organizations they would like to serve with.

#### Use Cases covered in this release:

We extended the Common Data Model for Nonprofits data schema to generally handle the following use cases common to most nonprofits managing volunteers:

#	As a...<type of user>	I want to...<some goal>	...so that <some reason>
1	Volunteer	Create and maintain my profile based on my preferences, skills, location, schedule, etc.	A nonprofit can engage me based on the details I define
2	Volunteer	Apply for open volunteer positions based on my preferences, skills, location, schedule, etc.	I can self-select volunteer opportunities that match my interest(s)
3	Volunteer Manager	Create and manage a lifecycle for volunteer opportunities	My organization can manage volunteers and volunteer opportunities
4	Volunteer Manager	Search for volunteers based on specific criteria for volunteer opportunities	My organization can correctly match volunteers with volunteer opportunities
5	Volunteer Manager	Filter specific volunteers in and/or out of searches based on specific volunteer and/or volunteer opportunity criteria	My organization can correctly match volunteers with volunteer opportunities
6	Volunteer Manager	Provide and track completion of training for volunteers	Volunteers have the required skills to fulfill volunteer opportunity requirements
7	Supervisor	Easily assign case access privileges for my case managers	I can ensure case data is appropriately safeguarded

### Key Concepts and Entities Leveraged for Volunteer Management

The following are the dependent CDM for Nonprofits entities leveraged by the volunteer management sample application:

#	Category	Requirement
1	Work Item	An entity that tracks a logical unit of work or process of work.
2	Work Item Action	This entity contains the action that are taken to complete a work item. This can include information gathering, providing services, or any other action.
3	Delivery Framework	Delivery Framework represents a management unit of work defined by the organization or entity doing the work. In IATI, the Delivery Framework is an "Activity."
4	Salutation	A Salutation represents the way a constituent wishes to be addressed, depending on the source, purpose and content of a of communication. Salutations may or may not be auto-created by workflow.



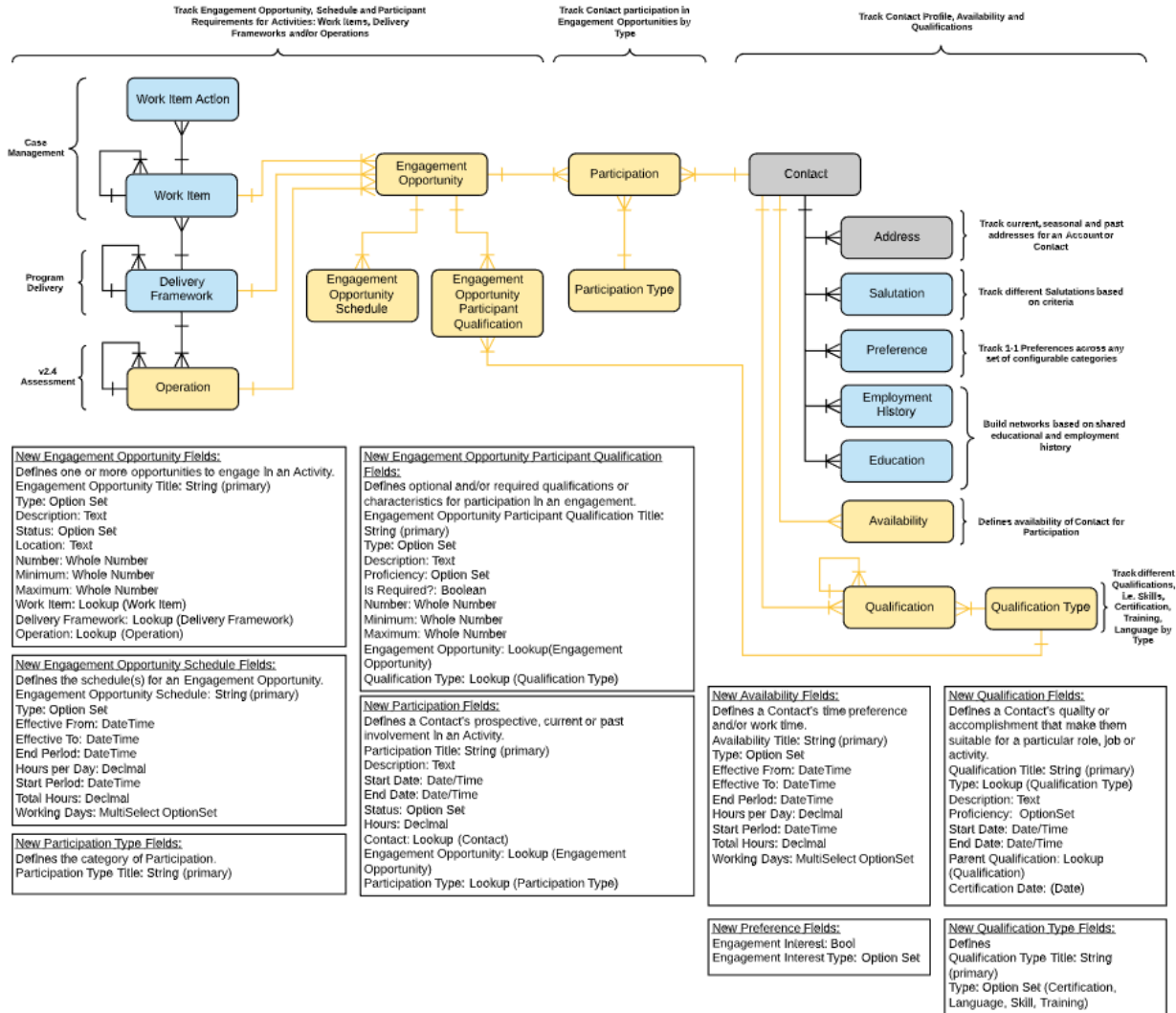
#	Category	Requirement
5	Preference	Preference represents an abundance of constituent or organization information that doesn't live cleanly on an account or contact record, or that can be associated with both an Account and a Contact.
6	Employment History	Employment History represents historical and/or current information about where a contact works, volunteers or serves in some capacity at an organization.
7	Education	Education references biographical information about the educational institutions a contact attended or is attending.
8	Engagement Opportunity	Defines one or more opportunities to engage in an Activity.
9	Engagement Opportunity Participation Qualification	Defines optional and/or required qualifications or characteristics for participation in an engagement.
10	Engagement Opportunity Schedule	Defines the schedule(s) for an Engagement Opportunity.
11	Participation	Defines a Contact's prospective, current, or past involvement in an Activity.
12	Participation Type	Defines the category of Participation.
13	Availability	Defines a Contact's time preference and/or work time.
14	Qualification	Defines a Contact's quality or accomplishment that make them suitable for a particular role, job, or activity.
15	Qualification Type	Defines the category of qualification.

## How to Model Volunteer Management



### Dynamics 365 Nonprofit Accelerator Version 3.0 How to Model Volunteer Management

Key:  
NFP Extensions (Core)  
Proposed v3.0 Extensions



## New Common Data Model for Nonprofits Volunteer Management attributes

The following are attributes related to each of the new Volunteer Management entities added in this release

### 1. **ENGAGEMENT OPPORTUNITY** (msnfp\_engagementopportunity)

Schema Name	Display Name	Type	Description
msnfp_deliveryFrameworkId	Delivery Framework	Lookup	The related Delivery Framework unique identifier.
msnfp_deliveryFrameworkName	N/A	String	N/A
msnfp_description	Description	Memo	The description of the Engagement Opportunity.
msnfp_engagementOpportunityId	Engagement Opportunity	Unique identifier	Unique identifier for entity instances
msnfp_engagementOpportunityStatus	Engagement Opportunity Status	Picklist	The status of the Engagement Opportunity.
msnfp_engagementOpportunityStatusName	N/A	Virtual	N/A
msnfp_engagementOpportunityTitle	Engagement Opportunity Title	String	The name of the custom entity.
msnfp_location	Location	String	The location of the Engagement Opportunity.
msnfp_maximum	Maximum	Integer	The maximum number of participants the Engagement Opportunity can support.
msnfp_minimum	Minimum	Integer	The minimum number of participants needed for Engagement Opportunity.
msnfp_number	Number	Integer	The number of participants needed for the Engagement Opportunity.
msnfp_operationId	Operation	Lookup	The related operation unique identifier.
msnfp_operationIdName	N/A	String	N/A
msnfp_type	Type	Picklist	
msnfp_typeName	N/A	Virtual	N/A

msnfp_workItemId	Work Item	Lookup	The related Work Item unique identifier.
msnfp_workItemIdName	N/A	String	N/A

## 2. **ENGAGEMENT OPPORTUNITY PARTICIPATION QUALIFICATIONS**

(msnfp\_engagementopportunitypart)

<b>Schema Name</b>	<b>Display Name</b>	<b>Type</b>	<b>Description</b>
msnfp_description	Description	Memo	The description for the Engagement Opportunity Participant Qualification.
msnfp_engagementOpportunityId	Engagement Opportunity	Lookup	The unique identifier for the related Engagement Opportunity.
msnfp_engagementOpportunityIdName	N/A	String	N/A
msnfp_engagementopportunityparticipantqualId	Engagement Opportunity Participant Qualification	Unique identifier	Unique identifier for entity instances
msnfp_engagementOpportunityParticipantQualTitle	Engagement Opportunity Participant Qualification	String	The name of the custom entity.
msnfp_isRequired	Is Required	Boolean	Indicates if the qualification is required for participation.
msnfp_isrequiredName	N/A	Virtual	N/A
msnfp_maximum	Maximum	Integer	The maximum number of participants needed with the participant qualification.
msnfp_minimum	Minimum	Integer	The minimum number of participants needed

			with the participant qualification.
msnfp_number	Number	Integer	Number number of participants needed with the participant qualification.
msnfp_proficiency	Proficiency	Picklist	The proficiency for the qualification.
msnfp_proficiencyName	N/A	Virtual	N/A
msnfp_qualificationTypeld	Qualification Type	Lookup	The unique identifier for the related Qualification Type.
msnfp_qualificationTypeldName	N/A	String	N/A
msnfp_type	Type	Picklist	The type of Engagement Opportunity Participant Qualification.
msnfp_typeName	N/A	Virtual	N/A

### 3. **ENGAGEMENT OPPORTUNITY SCHEDULE** (msnfp\_engagementopportunitysche)

Schema Name	Display Name	Type	Description
msnfp_effectiveFrom	Effective From	DateTime	The date and time that the schedule is effective from.
msnfp_effectiveTo	Effective To	DateTime	The date and time that the schedule is effective to.
msnfp_endPeriod	End Period	DateTime	The end date and time of the schedule
msnfp_engagementOpportunity	Engagement Opportunity	Lookup	The related Engagement Opportunity unique identifier.
msnfp_engagementOpportunityName	N/A	String	N/A
msnfp_engagementOpportunitySchedule	Engagement Opportunity Schedule Title	String	The name of the custom entity.
msnfp_engagementopportunityscheduleld	Engagement Opportunity Schedule	Uniqueidentifier	Unique identifier for entity instances

msnfp_hoursPerDay	Hours per Day	Decimal	The hours per day for the Engagement Opportunity.
msnfp_startPeriod	Start Period	DateTime	The start date and time of the schedule.
msnfp_totalHours	Total Hours	Decimal	The total hours for the schedule.
msnfp_type	Type	Picklist	The type of Engagement Opportunity Schedule.
msnfp_typeName	N/A	Virtual	N/A
msnfp_workingDays	Working Days	MultiSelect OptionSet	The number of days for the schedule.
msnfp_workingdaysName	N/A	Virtual	N/A

#### 4. **PARTICIPATION** (msnfp\_participation)

Schema Name	Display Name	Type	Description
msnfp_contactId	Contact	Lookup	The unique identifier of the related Contact.
msnfp_contactIdName	N/A	String	N/A
msnfp_contactIdYomiName	N/A	String	N/A
msnfp_description	Description	Memo	The description of the Participation.
msnfp_endDate	End Date	DateTime	The date and time that the Participation ends.
msnfp_engagementOpportunityId	Engagement Opportunity	Lookup	The unique identifier for the related Engagement Opportunity.
msnfp_engagementOpportunityIdName	N/A	String	N/A
msnfp_hours	Hours	Decimal	Hours of participation.
msnfp_participationId	Participation	Unique identifier	Unique identifier for entity instances
msnfp_participationTitle	Participation Title	String	The name of the custom entity.
msnfp_participationTypeId	Participation Type	Lookup	The type of Participation.
msnfp_participationTypeIdName	N/A	String	N/A

msnfp_startDate	Start Date	DateTime	The time and date the Participation starts.
msnfp_status	Participation Status	Picklist	The status of the Participation.
msnfp_statusName	N/A	Virtual	N/A

5. **PARTICIPATION TYPE** (msnfp\_participationtype)

Schema Name	Display Name	Type	Description
msnfp_participationtypeId	Participation Type	Uniqueidentifier	Unique identifier for entity instances
msnfp_participationTypeTitle	Participation Type Title	String	The name of the custom entity.

6. **AVAILABILITY** (msnfp\_availability)

Schema Name	Display Name	Type	Description
msnfp_availabilityId	Availability	Uniqueidentifier	Unique identifier for entity instances
msnfp_availabilityTitle	Availability Title	String	The name of the custom entity.
msnfp_contactId	Contact	Lookup	The unique identifier for the related Contact.
msnfp_contactIdName	N/A	String	N/A
msnfp_contactIdYomiName	N/A	String	N/A
msnfp_effectiveFrom	Effective From	DateTime	The date the Availability starts.
msnfp_effectiveTo	Effective To	DateTime	The date the Availability ends.
msnfp_endPeriod	End Period	DateTime	The date the Availability period ends.
msnfp_hoursPerDay	Hours per Day	Decimal	Hours of availability per day.
msnfp_startPeriod	Start Period	DateTime	The start period of the Availability.
msnfp_totalHours	Total Hours	Decimal	Total number of hours of availability.
msnfp_type	Type	Picklist	The type of availability.
msnfp_typeName	N/A	Virtual	N/A

msnfp_workingDays	Working Days	MultiSelect OptionSet	Number of days available for participating.
msnfp_workingdaysName	N/A	Virtual	N/A

## 7. **QUALIFICATION** (msnfp\_qualification)

Schema Name	Display Name	Type	Description
msnfp_CertificationDate	Certification Date	DateTime	The date for the certification.
msnfp_contactId	Contact	Lookup	The unique identifier for the related Contact.
msnfp_contactIdName	N/A	String	N/A
msnfp_contactIdYomiName	N/A	String	N/A
msnfp_description	Description	Memo	The description of the Qualification.
msnfp_endDate	End Date	DateTime	The end date of the qualification.
msnfp_parentQualificationId	Parent Qualification	Lookup	The unique identifier of the parent qualification.
msnfp_parentQualificationIdName	N/A	String	N/A
msnfp_proficiency	Proficiency	Picklist	The proficiency of the Contact's Qualification.
msnfp_proficiencyName	N/A	Virtual	N/A
msnfp_qualificationId	Qualification	Unique identifier	Unique identifier for entity instances
msnfp_qualificationTitle	Qualification Title	String	The name of the custom entity.
msnfp_startDate	Start Date	DateTime	The start date of the Qualification.
msnfp_typeId	Type	Lookup	The unique identifier for the related Qualification Type.
msnfp_typeIdName	N/A	String	N/A

## 8. **QUALIFICATION TYPE** (msnfp\_qualificationtype)

Schema Name	Display Name	Type	Description
msnfp_qualificationtypeId	Qualification Type	Unique identifier	Unique identifier for entity instances
msnfp_qualificationtypeTitle	Qualification Type Title	String	The name of the custom entity.



msnfp_type	Type	Picklist	The type of Qualification Type.
msnfp_typeName	N/A	Virtual	N/A

## B. ASSESSMENT MANAGEMENT SAMPLE APPLICATION & SAMPLE DATA

The Nonprofit Accelerator v3.0 release enables this by extending the Common Data Model for Nonprofits to enable frontline workers to accurately, consistently, rapidly and efficiently record detailed observations during an assessment. This extension can be used by nonprofits doing assessments after a natural disaster, by case managers doing assessments of beneficiaries and program managers assessing the impact of their programs. It is anchored by ten new entities and related attributes.

Assessment Management use cases enabled through our Common Data Model for Nonprofits and Nonprofit Accelerator enhancements include:

### Personas Served:

- Assessor:** nonprofit frontline worker or volunteer who is responsible for describing damage, impact, or beneficiary needs on the frontline of a disaster, health and human services initiative, or nonprofit mission that often requires cross-organization collaboration.

### Use Cases covered in this release:

#	As a...<type of user>	I want to...<some goal>	...so that <some reason>
1	Assessor	Accurately, consistently, rapidly and efficiently record detailed observations during an assessment	I can describe damage and share it with others to enable decision support and reduce redundancy
2	Assessor	Compile, view and analyze multiple assessments	Response(s) can be prioritized
3	Assessor	Share assessments with others	Response(s) can be prioritized
4	Assessor	Record and share information about the "Who" in an assessment, including the responding organization and/or individual recording the assessment	An accurate record of an assessment is recorded and others can trace the assessment to an organization and/or individual
5	Assessor	Record and share information about the "Where" in an assessment including a point, area and/or polygon	An accurate record of an assessment is recorded and others can trace the assessment to the correct location
6	Assessor	Record and share information about the "When" in an assessment including a point in	An accurate record of an assessment is recorded and others can trace the assessment to the correct time, as

#	As a...<type of user>	I want to...<some goal>	...so that <some reason>
		time and/or a span of time (including dates and times)	well as enable performance of temporal analysis
7	Assessor	Record and share information about the "What" in an assessment including the operations being conducted and/or an identified and met/unmet need	An accurate record of an assessment is recorded and others can validate the result and/or others can prioritize responses based on unmet needs
8	Reviewer	Have access to data and information in a consistent format	I can accurately assess damage and prioritize responses

### Key Concepts and Entities Leveraged for Assessment Management

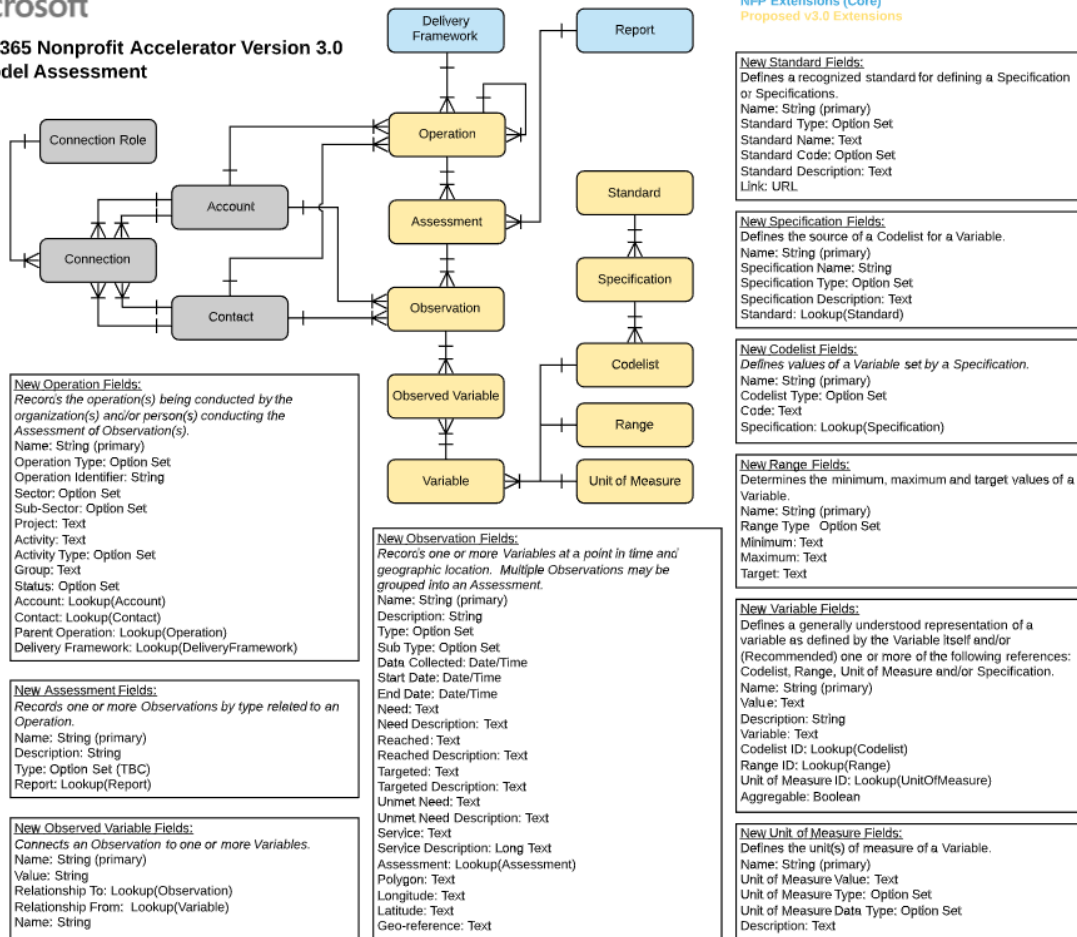
The following are the dependent CDM for Nonprofits entities leveraged by the assessment management sample application:

#	Category	Requirement
1	Delivery Framework	Delivery Framework represents a management unit of work defined by the organization or entity doing the work. In IATI, the Delivery Framework is an "Activity."
2	Report	Reports represent information submitted by an awardee to the awarding entity (i.e., a Foundation) or information submitted by an authorized awarding entity individual/entity about an awardee.
3	Operation	Records the operation(s) being conducted by the organization(s) and/or person(s) conducting the Assessment of Observation(s).
4	Assessment	Records one or more Observations by type related to an Operation.
5	Observation	Records one or more Variables at a point in time and geographic location. Multiple Observations may be grouped into an Assessment.
6	Observed Variable	Connects an Observation to one or more Variables.
7	Variable	Defines a generally understood representation of a variable as defined by the Variable itself and/or (Recommended) one or more of the following references: Codelist, Range, Unit of Measure and/or Spec
8	Standard	Defines a recognized standard for defining a Specification or Specifications.
9	Specification	Defines the source of a Codelist for a Variable.
10	Codelist	Defines values of a Variable set by a Specification.
11	Range	Determines the minimum, maximum and target values of a Variable.
12	Unit of Measure	Defines the unit(s) of measure of a Variable.

## How to Model Assessment Management



Dynamics 365 Nonprofit Accelerator Version 3.0  
How to Model Assessment



## New Common Data Model for Assessment Management attributes

The following are attributes related to each of the new PMPD entities added in this release

### 1. **OPERATION** (msnfp\_operation):

Schema Name	Display Name	Type	Description
msnfp_accountId	Account	Lookup	
msnfp_accountIdName	N/A	String	N/A
msnfp_accountIdYomiName	N/A	String	N/A

msnfp_activity	Activity	String	Activity/Task of operating organization within Project.
msnfp_activityType	Activity Type	Picklist	
msnfp_activitytype Name	N/A	Virtual	N/A
msnfp_contactId	Contact	Lookup	
msnfp_contactIdName	N/A	String	N/A
msnfp_contactIdYomiName	N/A	String	N/A
msnfp_deliveryFrameworkId	Delivery Framework	Lookup	
msnfp_deliveryFrameworkIdName	N/A	String	N/A
msnfp_group	Group	String	
msnfp_name	Name	String	The name of the custom entity.
msnfp_operationId	Operation	Uniqueid entifier	Unique identifier for entity instances
msnfp_operationIdentifier	Operation Identifier	String	This field store an auxiliary identifier.
msnfp_operationStatus	Operation Status	Picklist	Status of Program/Project/Activity/Task.
msnfp_operationstatusName	N/A	Virtual	N/A
msnfp_operationType	Operation Type	Picklist	They type of Operation being conducted, completed or planned to be conducted.
msnfp_operationtypeName	N/A	Virtual	N/A
msnfp_parentOperationId	Parent Operation	Lookup	
msnfp_parentOperationIdName	N/A	String	N/A
msnfp_project	Project	String	Program/Project name from operating organization.
msnfp_sectorType	Sector	Picklist	Sector.
msnfp_sectortypeName	N/A	Virtual	N/A
msnfp_subSectorType	Sub-Sector	Picklist	Sub-Sector.

msnfp_subsectorypeName	N/A	Virtual	N/A
msnfp_typeDescription	Type Description	Memo	Text description of the type of event requiring operation(s).

## 2. **ASSESSMENT** (msnfp\_assessment)

Schema Name	Display Name	Type	Description
msnfp_assessmentId	Assessment	Uniqueidentifier	Unique identifier for entity instances
msnfp_description	Description	Memo	Description of the of Assessment.
msnfp_name	Name	String	The name of the custom entity.
msnfp_operationId	Operation	Lookup	Unique identifier for entity instances
msnfp_operationIdName	N/A	String	N/A
msnfp_reportId	Report	Lookup	Unique identifier for related report instances
msnfp_reportIdName	N/A	String	N/A
msnfp_type	Type	Picklist	Type of Assessment.
msnfp_typeDescription	Type Description	Memo	Description of the type of Observation.
msnfp_typeName	N/A	Virtual	N/A

## 3. **OBSERVATION** (msnfp\_observation)

Schema Name	Display Name	Type	Description
msnfp_accountId	Account	Lookup	The unique identifier for the related account.
msnfp_accountIdName	N/A	String	N/A
msnfp_accountIdYomiName	N/A	String	N/A
msnfp_assessmentId	Assessment	Lookup	Unique identifier for related assessment.

msnfp_assessmentIdName	N/A	String	N/A
msnfp_classificationDescription	Classification Description	Memo	
msnfp_classificationType	Classification	Picklist	The classification of the the observation.
msnfp_classificationtype Name	N/A	Virtual	N/A
msnfp_contactid	Contact	Lookup	The unique identifier for the related contact.
msnfp_contactidName	N/A	String	N/A
msnfp_contactidYomiName	N/A	String	N/A
msnfp_dataCollected	Data Collected	DateTime	Date the data was collected.
msnfp_description	Description	Memo	This contains a description.
msnfp_endDate	End Date	DateTime	The end date.
msnfp_geoReference	Geo-Reference	String	Stores the Geo-Reference for the operation.
msnfp_latitude	Latitude	String	
msnfp_longitude	Longitude	String	
msnfp_name	Name	String	The name of the custom entity.
msnfp_need	Need	String	Need observed.
msnfp_needDescription	Need Description	Memo	Description of the need observed.
msnfp_observationId	Observation	Unique identifier	Unique identifier for entity instances
msnfp_polygon	Polygon	String	

msnfp_reached	Reached	String	Need fulfilled by the organization.
msnfp_reachedDescription	Reached Description	Memo	Description of the need fulfilled by the organization.
msnfp_service	Service	String	the service for the operation.
msnfp_serviceDescription	Service Description	Memo	The description of the service.
msnfp_startDate	Start Date	DateTime	The start date.
msnfp_subType	Sub-Type	Picklist	Sub type of Observation.
msnfp_subtypeName	N/A	Virtual	N/A
msnfp_targeted	Targeted	String	Need targeted by the organization.
msnfp_targetedDescription	Targeted Description	Memo	Description of the need targeted but not fulfilled by the organization.
msnfp_type	Type	Picklist	Type of Observation. This value determines logic of relationships to Variable. Examples may include: Need, Reached, Target, Unmet Need.
msnfp_typeName	N/A	Virtual	N/A
msnfp_unmetNeed	Unmet Need	String	Need not fulfilled or targeted by the organization.
msnfp_unmetNeedDescription	Unmet Need Description	Memo	Description of the need not fulfilled or targeted by the organization.

4. **OBSERVED VARIABLE** (msnfp\_observedvariable)

Schema Name	Display Name	Type	Description
msnfp_name	Name	String	The name of the custom entity.
msnfp_observedvariableid	Observed Variable	Uniqueidentifier	Unique identifier for entity instances

msnfp_relatedToObservationId	Related To Observation	Lookup	Unique identifier for the Observation related to the Variable.
msnfp_relatedToObservationIdName	N/A	String	N/A
msnfp_relatedToVariableId	Related To Variable	Lookup	Unique identifier for the Variable related to the Observation.
msnfp_relatedToVariableIdName	N/A	String	N/A
msnfp_value	Value	String	Describes the value of the observed Variable.

#### 5. **VARIABLE** (msnfp\_variable)

Schema Name	Display Name	Type	Description
msnfp_aggregable	Aggregable	Boolean	Indicates if the Value is aggregable.
msnfp_aggregableName	N/A	Virtual	N/A
msnfp_codelistId	Codelist	Lookup	
msnfp_codelistIdName	N/A	String	N/A
msnfp_description	Description	Memo	
msnfp_name	Name	String	The name of the custom entity.
msnfp_rangedId	Range	Lookup	
msnfp_rangedIdName	N/A	String	N/A
msnfp_unitOfMeasureId	Unit of Measure	Lookup	
msnfp_unitOfMeasureIdName	N/A	String	N/A
msnfp_variable	Variable	String	
msnfp_variableId	Variable	Uniqueidentifier	Unique identifier for entity instances

#### 6. **STANDARD** (msnfp\_standard)

Schema Name	Display Name	Type	Description
msnfp_link	Link	String	URL of the Standard.
msnfp_name	Name	String	The name of the custom entity.
msnfp_standardCode	Standard Code	Picklist	Code (identifier) of the Standard.



msnfp_standardcodeName	N/A	Virtual	N/A
msnfp_standardDescription	Description	Memo	Description of the Standard.
msnfp_standardId	Standard	Uniqueidentifier	Unique identifier for entity instances
msnfp_standardType	Standard Type	Picklist	Type of Standard the is being defined for.
msnfp_standardtypeName	N/A	Virtual	N/A

7. **SPECIFICATION** (msnfp\_specification)

Schema Name	Display Name	Type	Description
msnfp_specificationDescription	Specification Description	Memo	Description of the Specification.
msnfp_specificationId	Specification	Uniqueidentifier	Unique identifier for entity instances
msnfp_specificationName	Name	String	The name of the Specification.
msnfp_specificationType	Specification Type	Picklist	Type of Specification.
msnfp_specificationtypeName	N/A	Virtual	N/A
msnfp_standardId	Standard	Lookup	Unique identifier for related Standard instance.
msnfp_standardIdName	N/A	String	N/A

8. **CODELIST** (msnfp\_codelist)

Schema Name	Display Name	Type	Description
msnfp_code	Code	String	
msnfp_codelistId	Codelist	Uniqueidentifier	Unique identifier for entity instances
msnfp_codelistType	Codelist Type	Picklist	Type of codelist the vocabulary is being defined for.
msnfp_codelisttypeName	N/A	Virtual	N/A
msnfp_name	Name	String	The name of the custom entity.

msnfp_specificationId	Specification	Lookup	The related specification.
msnfp_specificationId Name	N/A	String	N/A

9. **RANGE** (msnfp\_range)

Schema Name	Display Name	Type	Description
msnfp_name	Name	String	The name of the custom entity.
msnfp_rangeld	Range	Uniqueidentifier	Unique identifier for entity instances
msnfp_rangeMaximum	Maximum	String	Maximum value of the Range.
msnfp_rangeMinimum	Minimum	String	Minimum value of the Range.
msnfp_rangeTarget	Target	String	Target value of the Range.
msnfp_rangeType	Range Type	Picklist	Type of Range.
msnfp_rangetypeName	N/A	Virtual	N/A

10. **UNIT OF MEASURE** (msnfp\_unitofmeasure)

Schema Name	Display Name	Type	Description
msnfp_name	Name	String	The name of the custom entity.
msnfp_unitOfMeasureDataType	Unit of Measure Data Type	Picklist	Data Type of Unit of Measure.
msnfp_unitofmeasuredatatypeName	N/A	Virtual	N/A
msnfp_unitOfMeasureDescription	Description	Memo	Description of the Unit of Measure.
msnfp_unitofmeasureId	Unit of Measure	Uniqueidentifier	Unique identifier for entity instances
msnfp_unitOfMeasureType	Unit of Measure Type	Picklist	Type of Unit of Measure.
msnfp_unitofmeasuretypeName	N/A	Virtual	N/A
msnfp_unitOfMeasureValue	Unit of Measure Value	String	Value of the Unit of Measure

### C. FRONTLINE HUMANITARIAN LOGISTICS DATA SCHEMA

Led by Oxfam, Goal, and NetHope, the **Frontline Humanitarian Logistics** (FHL) initiative was created to reduce the time and cost involved in implementing IT solutions within humanitarian supply chains and encourage interoperability of data, service delivery, and systems across the sector.

NetHope led a cross-sector group of 24 collaborating organizations including leading technology vendors, academics, and nonprofit organization subject matter experts which resulted in the development of a [Frontline Humanitarian Logistics Data Standard](#). With this release, we are aligning item requests, types, and groups to that standard to further ease collaboration between nonprofits responding to the same crisis to ensure faster delivery of needed services.

The Frontline Humanitarian Logistics Common Data Model for Nonprofits data extensions focus on data schema that can provide donors with exact information about what items are in demand, where the supplies they helped fund with their donations were delivered, and the subsequent impact made to beneficiaries. The ability for nonprofit organizations to report back on donor impact is critical at this time of increased demand for transparency.

The Nonprofit Accelerator v3.0 release enables this through the addition of five new frontline humanitarian logistics-oriented entities and related attributes.

#### Personas Served:

- **Humanitarian Logistician:** these individuals work (often under challenging conditions) to determine and deliver on the following question: Who needs what, where, why and when? They often work with multiple nonprofit organizations, government agencies, and corporations in a coordinating role to perform tasks under tight timelines where lives can be saved or lost based on their performance and collaboration.
- **Donor Services:** these individuals work with individual, institutional, corporate and government partners to source goods and services that are either stored until required in a humanitarian logistics event or on demand. They use tools and technology to track and report on the status of the goods and services themselves, as well as related information including but not limited to donor requirements and compliance.

#### Use Cases covered in this release:

We extended the Common Data Model for Nonprofits data schema to generally handle the following use cases common to most nonprofits managing frontline humanitarian logistics:

#	As a...<type of user>	I want to...<some goal>	...so that <some reason>
1	Humanitarian Logistician	Create and maintain requests for goods and/or services based on Assessments and Programs	I can source goods and/or services to meet humanitarian needs
2	Humanitarian Logistician	Associate requests for goods and/or services to Assessments and Programs	I can connect requests to operations and/or delivery initiatives for fulfillment
3	Humanitarian Logistician	Create and manage types of items	I can accurately describe and/or source goods and/or services as requested
4	Humanitarian Logistician	Create and manage groups of items	I can efficiently manage goods and/or services in logical groups or based on bundling
5	Donor Services	Accept items from donors	I can track the goods and/or services offered by donors
6	Donor Services	Report to donors on how their donations are utilized	I can ensure our operations are transparent to donors and that a donor's wishes are respected
7	Donor Services	Easily assign case access privileges for my case managers	I can ensure case data is appropriately safeguarded

### Key Concepts and Entities Leveraged for Frontline Humanitarian Logistics

The following are the dependent CDM for Nonprofits entities leveraged by the frontline humanitarian logistics data schema

#	Category	Requirement
1	Operation	Records one or more Variables at a point in time and geographic location. Multiple Observations may be grouped into an Assessment.
2	Assessment	Records one or more Observations by type related to an Operation.
3	Address	Address and shipping information. Used to store additional addresses for an account or contact.
4	Designation Plan	A line item attached to a Pledge, Payment Schedule, or Campaign indicating how associated payments should be designated.
5	Award	An Award represents the total amount of funding that has been agreed to be awarded to an individual or institution.
6	Payment Asset	Payment Asset represents the asset or assets associated with specific types of payments including, but not limited to, in-kind gifts, stocks and securities..

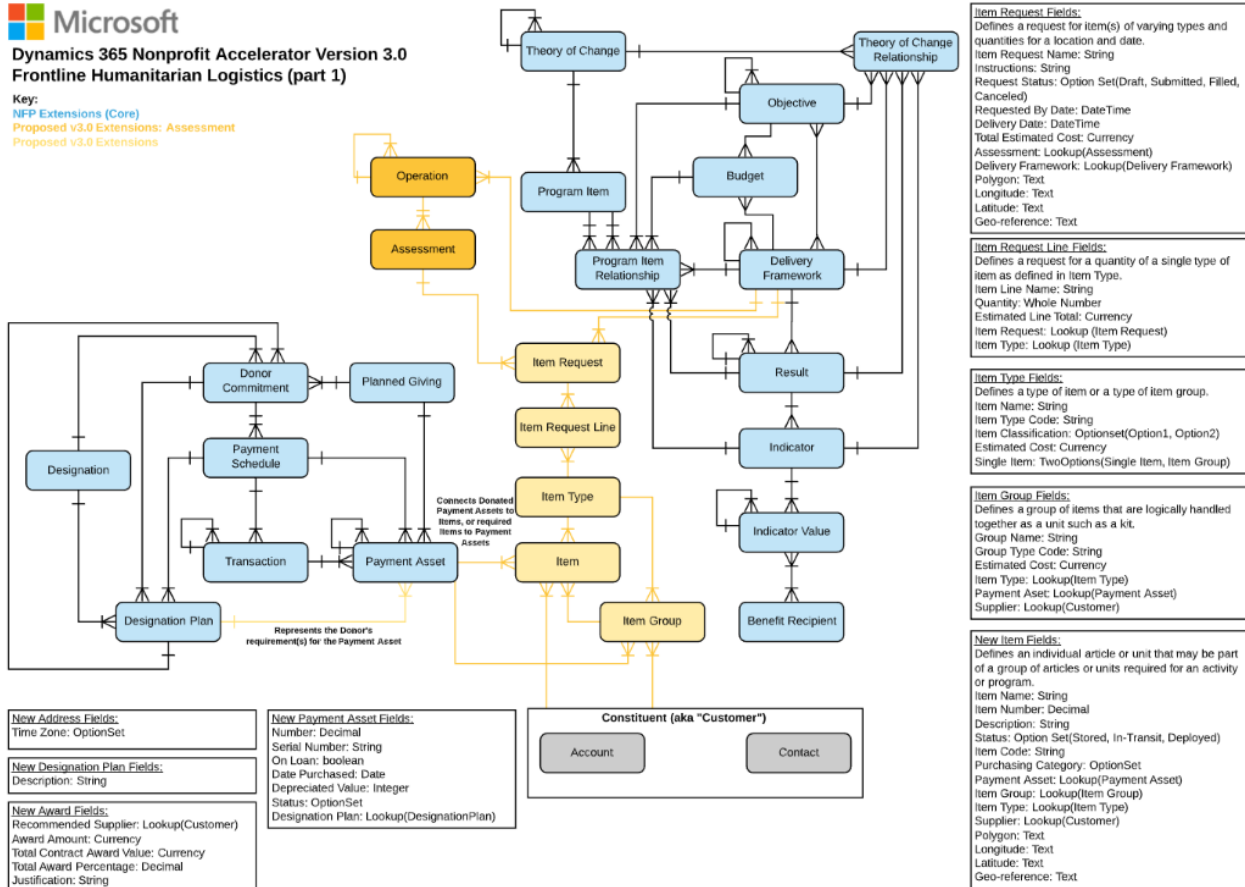
#	Category	Requirement
7	Item Request	Defines a request for an item or items of varying types and quantities for a location and date.
8	Item Request Line	Defines a request for a quantity of a single type of item as defined in Item Type.
9	Item Type	Defines a type of item or a type of item group.
10	Item	Defines an individual article or unit that may be part of a group of articles or units required for a program activity or donated by a donor.
11	Item Group	Defines a group of items that are logically handled together as a unit such as a kit.

## How to Model Frontline Humanitarian Logistics



### Dynamics 365 Nonprofit Accelerator Version 3.0 Frontline Humanitarian Logistics (part 1)

Key:  
 NFP Extensions (Core)  
 Proposed v3.0 Extensions: Assessment  
 Proposed v3.0 Extensions



## New Common Data Model for Frontline Humanitarian Logistics attributes

The following are attributes related to each of the new Frontline Humanitarian Logistics entities added in this release

### 1. **ITEM** (msnfp\_item)

Schema Name	Display Name	Type	Description
msnfp_description	Description	Memo	The description of the item.
msnfp_georeference	Geo-reference	String	The Geo-reference of the item.
msnfp_itemCode	Item Code	String	The code for the item.
msnfp_itemGroupId	Item Group	Lookup	The unique identifier for the related Item Group.
msnfp_itemGroupIdName	N/A	String	N/A
msnfp_itemId	Item	Unique identifier	Unique identifier for entity instances
msnfp_itemName	Item Name	String	The name of the custom entity.
msnfp_itemNumber	Item Number	Decimal	The number used to identify the item.
msnfp_itemStatus	Item Status	Picklist	The status of the item.
msnfp_itemstatusName	N/A	Virtual	N/A
msnfp_itemTypeId	Item Type	Lookup	The unique identifier for the related item type.
msnfp_itemTypeIdName	N/A	String	N/A
msnfp_latitude	Latitude	String	The latitude of the item.
msnfp_longitude	Longitude	String	The longitude of the item.
msnfp_paymentAssetId	Payment Asset	Lookup	The unique identifier for the related Payment Asset.
msnfp_paymentAssetIdName	N/A	String	N/A
msnfp_polygon	Polygon	String	The geolocational polygon of the item.
msnfp_purchasingCategoryType	Purchasing Category	Picklist	The type of purchasing category.
msnfp_purchasingcategorytypeName	N/A	Virtual	N/A
msnfp_supplierId	Supplier	Customer	The unique identifier for the related supplier.

msnfp_supplierIdName	N/A	String	N/A
msnfp_supplierIdType	N/A	EntityName	N/A
msnfp_supplierIdYomiName	N/A	String	N/A

## 2. **ITEM GROUP** (msnfp\_itemgroup)

Schema Name	Display Name	Type	Description
msnfp_estimatedCost	Estimated Cost	Money	The estimated cost of the item group.
msnfp_estimatedCost_Base	Estimated Cost (Base)	Money	Value of the Estimated Cost in base currency.
msnfp_groupName	Group Name	String	The name of the custom entity.
msnfp_groupTypeCode	Group Type Code	String	The code used to identify a group of items.
msnfp_itemgroupId	Item Group	Uniqueidentifier	Unique identifier for entity instances
msnfp_itemTypeId	Item Type	Lookup	The unique identifier for the related item type.
msnfp_itemTypeIdName	N/A	String	N/A
msnfp_paymentAssetId	Payment Asset	Lookup	The unique identifier for the related payment asset.
msnfp_paymentAssetIdName	N/A	String	N/A
msnfp_supplierId	Supplier	Customer	The unique identifier for the related contact or account.
msnfp_supplierIdName	N/A	String	N/A
msnfp_supplierIdType	N/A	EntityName	N/A
msnfp_supplierIdYomiName	N/A	String	N/A

## 3. **ITEM REQUEST** (msnfp\_itemrequest)

Schema Name	Display Name	Type	Description
msnfp_assessmentId	Assessment	Lookup	The unique identifier for the related assessment.



msnfp_assessmentId Name	N/A	String	N/A
msnfp_deliveryDate	Delivery Date	DateTime	The date for delivery of the item request.
msnfp_deliveryFrame workId	Delivery Framework	Lookup	The unique identifier for the related delivery framework.
msnfp_deliveryFrame workIdName	N/A	String	N/A
msnfp_georeference	Geo-reference	String	The geo reference for the item request.
msnfp_instructions	Instructions	Memo	Provide instructions for the request.
msnfp_itemrequestId	Item Request	Uniqueide ntifier	Unique identifier for entity instances
msnfp_itemRequestN ame	Item Request Name	String	The name of the custom entity.
msnfp_latitude	Latitude	String	The latitude for the item request.
msnfp_longitude	Longitude	String	The longitude for the item request.
msnfp_polygon	Polygon	String	The geolocational polygon for the item request.
msnfp_requestByDate	Request By Date	DateTime	The desired date for the item request to be filled by.
msnfp_requestStatus	Request Status	Picklist	The status of the item request.
msnfp_requeststatus Name	N/A	Virtual	N/A
msnfp_totalEstimated Cost	Total Estimated Cost	Money	The estimated cost of the entire item request.
msnfp_totalestimated cost_Base	Total Estimated Cost (Base)	Money	Value of the Total Estimated Cost in base currency.

#### 4. **ITEM REQUEST LINE** (msnfp\_itemrequestline)

Schema Name	Display Name	Type	Description
msnfp_estimatedLine Total	Estimated Line Total	Money	The estimated cost of the item request line.
msnfp_estimatedlinet otal_Base	Estimated Line Total (Base)	Money	Value of the Estimated Line Total in base currency.
msnfp_itemLineNam e	Item Line Name	String	The name of the custom entity.

msnfp_itemRequestl d	Item Request	Lookup	The unique identifier for the related Item Request.
msnfp_itemRequestl dName	N/A	String	N/A
msnfp_itemrequestli neld	Item Request Line	Uniqueide ntifier	Unique identifier for entity instances
msnfp_itemTypeeld	Item Type	Lookup	The unique identifier for the related Item Type.
msnfp_itemTypeeldNa me	N/A	String	N/A
msnfp_quantity	Quantity	Integer	The number of item types being requested.

5. **ITEM TYPE** (msnfp\_itemtype)

Schema Name	Display Name	Type	Description
msnfp_estimatedCos t	Estimated Cost	Money	The estimated cost of the item type.
msnfp_estimatedcost _Base	Estimated Cost (Base)	Money	Value of the Estimated Cost in base currency.
msnfp_itemClassifica tion	Item Classification	Picklist	The classification or category of the item type.
msnfp_itemclassificat ionName	N/A	Virtual	N/A
msnfp_itemName	Item Name	String	The name of the custom entity.
msnfp_itemTypeCod e	Item Type Code	String	The code used to identify the item type.
msnfp_itemtypeeld	Item Type	Uniqueide ntifier	Unique identifier for entity instances
msnfp_singleItem	Single Item	Boolean	Denotes whether item type is a single item or item group.
msnfp_singleitemNa me	N/A	Virtual	N/A

6. **ADDRESS** (msnfp\_address)

Schema Name	Display Name	Type	Description
msnfp_description	Description	Memo	The description of the designation plan.

7. **AWARD** (msnfp\_award)

Schema Name	Display Name	Type	Description
msnfp_awardAmount	Award Amount	Money	The award amount.
msnfp_justification	Justification	Memo	the justification for the award.
msnfp_recommendedSupplierId	Recommended Supplier	Customer	The unique identifier for the recommended supplier for the award.
msnfp_recommendedSupplierIdName	N/A	String	N/A
msnfp_recommendedSupplierIdType	N/A	EntityName	N/A
msnfp_recommendedSupplierIdYomiName	N/A	String	N/A
msnfp_totalAwardPercentage	Total Award Percentage	Decimal	The total award percentage for the award.
msnfp_totalContractAwardValue	Total Contract Award Value	Money	The total award value for the contract.
msnfp_totalcontractawardvalue_Base	Total Contract Award Value (Base)	Money	Value of the Total Contract Award Value in base currency.

8. **PAYMENT ASSET** (msnfp\_paymentasset)

Schema Name	Display Name	Type	Description
msnfp_datePurchased	Date Purchased	DateTime	The date purchased for the payment asset.
msnfp_depreciatedValue	Depreciated Value	Integer	The depreciated value for the payment asset.

msnfp_designationPlanId	Designation Plan	Lookup	The designation plan for the payment asset.
msnfp_designationPlanIdName	N/A	String	N/A
msnfp_number	Number	Decimal	The number for the payment asset.
msnfp_onLoan	On Loan	Boolean	Determines whether the payment asset is on loan.
msnfp_onloanName	N/A	Virtual	N/A
msnfp_serialNumber	Serial Number	String	The serial number for the payment asset.
msnfp_status	Status	Picklist	The status for the payment asset.
msnfp_statusName	N/A	Virtual	N/A

## 2. FRONTLINE HUMANITARIAN LOGISTICS MAPPING GUIDE

Led by Oxfam, Goal, and NetHope, the Frontline Humanitarian Logistics (FHL) initiative was created to reduce the time and cost involved in implementing IT solutions within humanitarian supply chains and encourage interoperability of systems across the sector. The [FHL Data Standard](#) project brought together experience from nonprofits, some of the world’s biggest technology companies with expertise in supply chain management, technology consultants and academics with a focus on humanitarian logistics,” and resulted in the publishing of the inaugural version (v1.0.2 - September 2020) of the [Frontline Humanitarian Logistics Data Standard](#).

The **Frontline Humanitarian Logistics Mapping Guide** provides guidance to nonprofits and partners on how to put the NetHope and nonprofit sector-developed [Frontline Humanitarian Logistics Data Standard](#) into practice. In conjunction with key partners, Microsoft has mapped the FHL Data Standard to the Common Data Model for Nonprofits as part of this release to support organizations who align to these valuable industry standards.

### 3. NONPROFIT ACCELERATOR ARCHITECTURAL ENHANCEMENTS

#### *SCALE FOR GROWTH AND DELIVER SIMPLICITY*

As the Common Data Model for Nonprofits and Nonprofit Accelerator evolve, we continue to scale these resources for maximum value and use by nonprofits of all sizes and mission types. In the v3.0 release, we reduced the data schema packages and removed all Dynamics dependencies. The new architecture gives developers the power to rapidly launch Power Platform applications, end-to-end Dynamics solutions, and cross-cloud solutions that leverage Azure and Modern Work technologies.

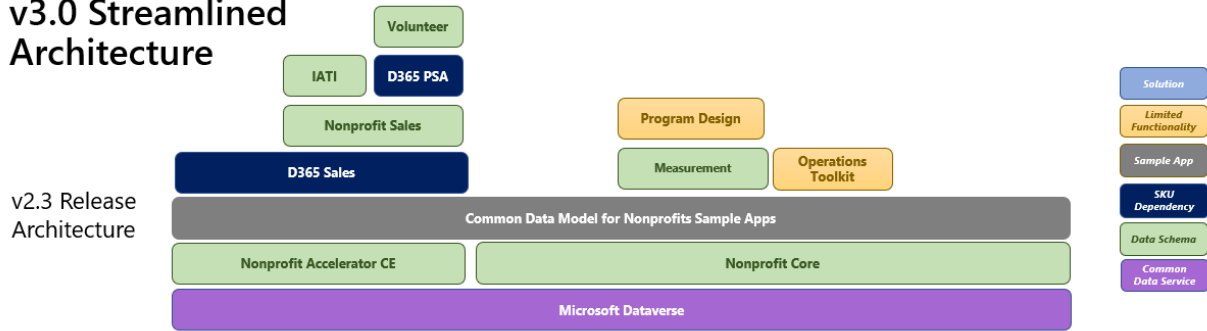
As a part of this streamlined architecture, we have rebuilt IATI without a Dynamics dependency. We are unable to support updates from the previous Dynamics dependent, IATI package to the new v3.0 IATI package. There is no change in functionality between the two packages. Please use the most recent IATI v3.0 package when looking to build on this data schema.

We also stopped releasing the Nonprofit Accelerator CE and Nonprofit Sales packages. They are still available on GitHub in previous releases, but we will not continue to maintain or support these packages.

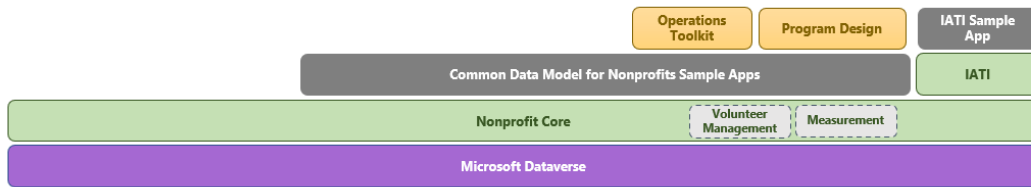
Our goals in scaling and streamlining the CDM for Nonprofits and Nonprofit Accelerator architecture include:

1. Providing partners and nonprofit developers with as much flexibility as possible to extend and build from the architecture, whether in the form of lightweight Power Platform applications, end-to-end Dynamics solutions, and/or cross-cloud solutions that leverage Azure and Modern Work technologies.
2. Serve small, medium, large, and enterprise nonprofits with schema and solutions purpose-built to fuel their fundraising, program, operations, finance, IT, and analyst staff forward.
3. Reduce the overall footprint of the Accelerator architecture to aid with seamless upgrades, forward and backward compatibility and extensibility.
4. Serve as a standard across all Microsoft Industry Accelerators for continue to add value to our Nonprofit Accelerator at a rapid pace.

### v3.0 Streamlined Architecture



### v3.0 Release Architecture



## RELEASE ASSETS (DOCUMENTATION, ADMINISTRATIVE GUIDES, SAMPLE DATA, AND SOLUTIONS)

This release includes the following assets to aid partners and nonprofits as they adopt and extend these capabilities. All release documentation is available on GitHub here:

<https://github.com/microsoft/Industry-Accelerator-Nonprofit/releases>

Name	Asset Type	Description
NonprofitAnchor_managed.zip	Solution	Base Solution Layer - Managed
NonprofitCore_3_0_3_0_managed.zip	Solution	Core Solution Layer - Managed
NonprofitIATI_3_0_3_0_managed.zip	Solution	IATI Solution Layer - Managed
CommonDataModelNonprofitSampleApps_2_3_3_0_managed.zip	Solution	This extension contains the sample applications that compliment and showcase Nonprofit Core functionality.
CommonDataModelNonprofitSampleAppsBase_2_3_3_0_managed.zip	Solution	A supporting layer to assist with moving Sample Apps during the upgrade process.
NonprofitIATISampleApps_3_0_3_0_managed.zip	Solution	This extension contains the sample applications that compliment and showcase Nonprofit IATI functionality.
ProgramDesign-v3_0_3_0.zip	Solution	Program Design app
NonprofitAccelerator_CDS_ProgramDesign_Flow_msnfp_CreateSummaryDocument_Template.docx	Solution	Template to set up documents in Program Design app
NonprofitOperationsToolkit_1_1_3_5_managed.zip	Solution	Nonprofit Operations Toolkit Layer - Managed
NonprofitOperationsToolkitFlows_1_1_3_5_managed.zip	Solution	Nonprofit Operations Toolkit Flows – Managed imported after NonprofitOperationsToolkit_1_1_3_5_managed.zip

<b>Name</b>	<b>Asset Type</b>	<b>Description</b>
NFP.Accelerator.3.0.-.Package.Deployer.Solution.zip	Solution	This zip file contains the components that can be used by administrators to install the Nonprofit Accelerator in conjunction with the Microsoft Package Deployer tool.
NFP.Accelerator.3.0.-.IATI.Codelist.Sync.zip	Solution	
NFP.Accelerator.3.0.-.Measurement.SDG.Icons.zip	Solution	Icons used in the CDS to highlight the SDG goals, indicators, and targets
NonprofitAccelerator_NonprofitCore_DataPackage_3_0_3_0.zip	Sample Data	Sample data package supporting the Core solution layer
NonprofitAccelerator_Nonprofit_IATI_DataPackage_3_0_3_0.zip	Sample Data	Sample data package supporting the IATI solution layer
NonprofitOperationsToolkit_DataPackage_1_1_3_5.zip	Sample Data	Sample data package supporting the Nonprofit Operations Toolkit solution layer
NFP.Accelerator.3.0.-.CDM.to.Frontline.Humanitarian.Logistics.Mapping.Guide.docx	Reference	Frontline Humanitarian Logistics Mapping Guide
NFP.Accelerator.3.0.-.Core.Metadata.Reference.xlsx	Reference	Core layer entity and attribute reference documentation
NFP.Accelerator.3.0.-.IATI.Metadata.Reference.xls	Reference	IATI layer entity and attribute reference documentation
NFP.Accelerator.3.0.-.Release.Notes.docx	Reference	Release Notes with details about added entities and attributes
NFP.Accelerator.3.0.-.Admin.Guide.docx	Reference	Solution requirements and detailed description of Nonprofit Accelerator power app solutions
NFP.Accelerator.3.0.-.Demo.Guide.docx	Reference	Walkthrough of the Nonprofit Accelerator Scenarios
NFP.Accelerator.3.0.-.Deployment.Guide.docx	Reference	Overview of deployment process
NFP.Accelerator.3.0.-.Nonprofit.ERD.and.How-to.Guide.docx	Reference	Nonprofit ERD and How-to Maps
NonprofitsOperationsToolkit_AdminGuide_1_1_3_5.docx	Reference	Nonprofit Operations Toolkit Admin Guide with scenario walk throughs



**Microsoft Dynamics 365 Nonprofit Accelerator  
Release Notes**



<b>Name</b>	<b>Asset Type</b>	<b>Description</b>
NonprofitOperationsToolkit_DemoGuide_1_1_3_5.pptx	Reference	Nonprofit Operations Toolkit Demo Guide
NFP Accelerator 3.0 – ERDs.zip	Reference	PDFs of the CDM ERDs