

GATEKEEPER

Protect Your Privacy

User Manual v2.0

WWW.GKCHAIN.COM

Untethered Labs, LLC

Product Overview

Package Contents

- GateKeeper Key
- GateKeeper USB Lock
- CR2032 Battery
- Key ring and Lanyard

Description

The GateKeeper is a lock and Key system for your computer. Using the GateKeeper software and associated hardware, the user can automatically lock or unlock his/her computer based on the proximity of the Key fob to the USB Lock.

GateKeeper Key

- Size: 45 mm x 25 mm x 6 mm
- CR2032 battery (replaceable)
- Expected battery life – 3 months to 6 months
- Range: Up to 30 feet

GateKeeper USB Lock

- Size: 20 mm x 16 mm x 6 mm
- Compatible with USB 2.0 and USB 3.0

GateKeeper Software

- Windows 7, 8, 8.1 and 10

FCC Statement

This device complies with Part 15 of the FCC Rules. Operation is subject to the following two conditions: (1) this device may not cause harmful interference, and (2) this device must accept any interference received, including interference that may cause undesired operation.

Product Safety

This product is not meant for small children. Please use the product in accordance with the instructions set out in this user manual.

Operation

Powering Up the GateKeeper Key

- Open the back of the GateKeeper Key
- Install the battery
- Close the back

GateKeeper Software

- The GateKeeper software can be downloaded from <http://www.gkchain.com/download.html>
- Once you have downloaded the software, please follow the instructions on the next page.

GateKeeper Windows Software

Installation

Download

- Download the GateKeeper software from www.gkchain.com/download.html

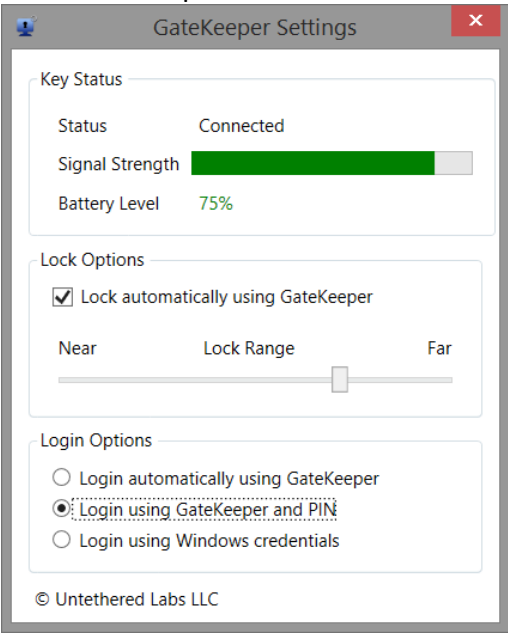
Install

- Run the setup file **GateKeeperSetup.msi**
- Follow the on-screen instructions for installing the GateKeeper software.
- Accept any driver installation requests that appear – these drivers are for communicating with the USB Lock

Software Operation

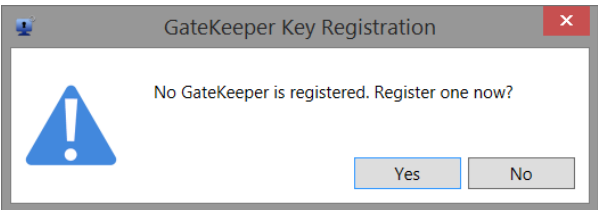
Running the software

- Once the installer finishes, plug the USB Lock into one of your computer’s USB ports. It will be recognized as a Texas Instruments communication device.
- Windows 7: Run the GateKeeper software from the Start menu.
- Windows 8, 8.1 and 10: Click the “Search” button on the home screen and search for GateKeeper. Click “GateKeeper” to start the software.

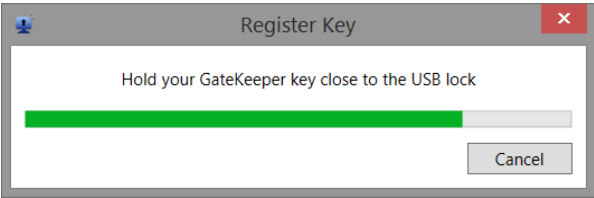


Key enrollment

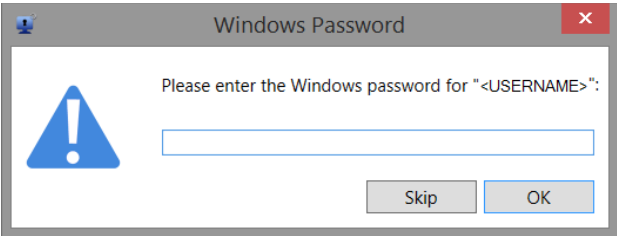
- The *Key Enrollment Wizard* comes up when the software is first started. Click “Yes” to register a key.



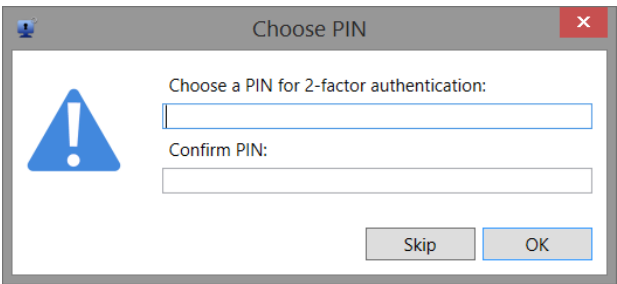
- Touch the GateKeeper device to the USB Lock.



- Once the software finds the Key, you will be asked for your windows password. Please enter your computer’s login password and click “**Ok**”. You can skip this step to disable logging into your computer using GateKeeper.



- Next you will be asked to choose a PIN. You can enter any alpha-numeric PIN to enable 2-factor authentication to login to your computer. You can skip this step if you want to disable 2-factor authentication.



- This step will complete the new key registration process.

GateKeeper Settings Window

- Click the GateKeeper icon in the task bar.
- Select the GateKeeper Settings menu option and you will be presented with the GateKeeper Settings window.
- Here you will be able to see the status of the connection between the USB Lock and the GateKeeper Keyfob, check the battery life of your Keyfob, select the lock/unlock range, and also choose from multiple login options.

Choosing Login Options

- You can choose one of three ways of logging into your computer.
- **Option 1- Login automatically using GateKeeper:** Choosing this will log you in automatically when the Keyfob comes in range of the computer. If you select this option, you will be asked to verify your PIN before proceeding.
- **Option 2- Login using GateKeeper and PIN:** This is the most secure method of logging into your computer. You will need to have your GateKeeper in range, and also type in your PIN to log into the computer. This is a 2-factor authentication method for logging into your computer.
- **Option 3 – Login using Windows credentials:** Choosing this option will allow you to log in using your Windows credentials.

Choosing the Locking/Unlocking Range

- Deselect the “Lock automatically using GateKeeper” option in the GateKeeper Settings Window
- Keep the GateKeeper Keyfob where it would normally be when you are using your computer.
- Choose a location on the “**Lock Range**” slider.
- Check the color of the signal strength bar. If it is red, your computer will lock at this setting. If it is green, your computer will unlock at this setting. If it is yellow, then the computer state will not change.
- If the signal bar shows red (LOCK), then move the slider to the right until you consistently get green (UNLOCK) results.
- Any position of the slider to the right of that position should give you uninterrupted operation of your computer.
- You can always move the slider towards the FAR side to give more room for uninterrupted operation.
- **Important: Re-enable automatically locking your computer by clicking the checkbox in the Lock Options section.**

Registering a Key

- Click the GateKeeper icon in the task bar.
- Click the “Register Key” Button
- Follow the instructions for key enrollment as described above

Unregistering a Key

- Click the GateKeeper icon in the task bar.
- Then click the “Unregister Key” button.

Updating Credentials

- Click the GateKeeper icon in the task bar
- Click on the “Update Credentials” button. This will allow you to update your login credentials

Feedback

- Click the GateKeeper icon in the task bar and select the “Submit Feedback” option.
- Type in your comments and click the “Submit” button.

Disable GateKeeper and Quit

- Click the GateKeeper icon in the task bar and select the “Disable and Quit” option.
- This will disable GateKeeper and quit the application

GateKeeper Mac Software

Download

- Download the GateKeeper software from www.gkchain.com/download

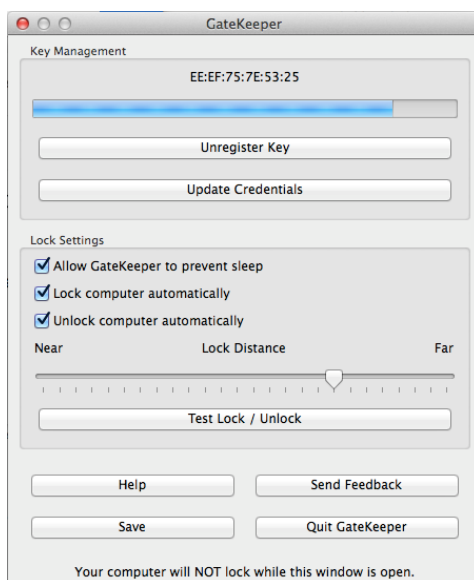
Install

- Run the setup file **GateKeeperSetup.pkg**
- You may have to change your Mac's settings to allow third party applications to be installed to your computer. They can be found in **System Preferences -> Security and Privacy**. In the **General** tab, under **"Allow apps downloaded from:"** choose the option that says **"Anywhere"**
- Follow the on-screen instructions for installing the GateKeeper software.
- Accept any driver installation requests that appear – these drivers are for communicating with the USB Lock

Software Operation

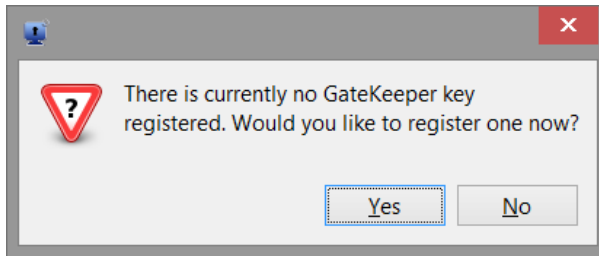
Running the software

- Once the installer finishes, plug the USB Lock into one of your computer's USB ports. It will be recognized as a Texas Instruments communication device.
- Run GateKeeper from the Applications folder.

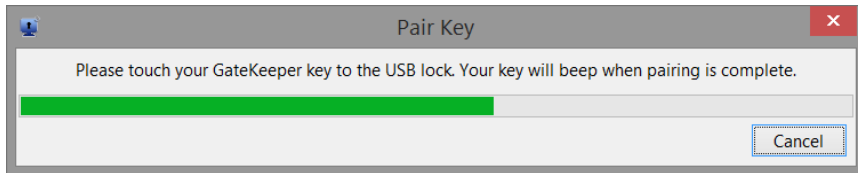


Key enrollment

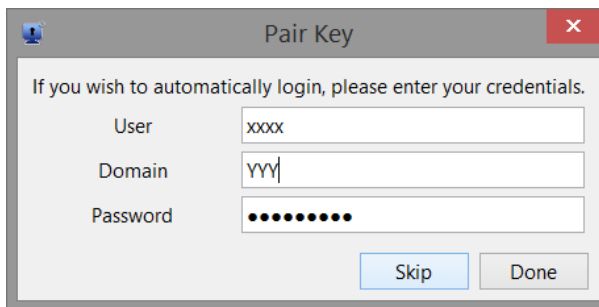
- The *Key Enrollment Wizard* comes up when the software is first started. Click **"Yes"** to register a key.



- Touch the GateKeeper device to the USB Lock.



- Once the software finds the Key, you will be asked for your username, Domain and password. The username and domain may already be populated. Please enter your computer's login password and click **"Done"**.
- If you skip this step, you will not be able to Automatically Log In to your computer.



Enabling Lock and Unlock functionalities

- Click the GateKeeper icon in the task bar.
- Select the appropriate boxes to choose the auto-lock and auto-unlock functions.
- **Note:** The GateKeeper software will work better if the Mac's sleep functions are turned off. If they are not, and if the display or the computer goes to sleep, the GateKeeper software will not be able to automatically log you on. So, to have a better auto-unlocking experience with the Mac, please enable the "Allow GateKeeper to prevent sleep" option.

Choosing the Locking/Unlocking Range

- Keep the GateKeeper Keyfob where it would normally be when you are using your computer.
- Choose a location on the **"Lock Distance"** slider.
- Click the **"Test Lock or Unlock"** button. It will show you whether the software will **"Lock"** or **"Unlock"** the computer with the chosen distance setting.
- If it shows Lock, then move the slider to the right until you consistently get **"Unlock"** results.
- Any position of the slider to the right of that position should give you uninterrupted operation of your computer.

- You can always move the slider towards the FAR side to give more room for uninterrupted operation.
- You can move the slider towards the NEAR side to lock the computer quicker.
- **Important: Always close the settings window upon setting a distance. The Lock/Un-Lock features are disabled while the settings window is active.**

Registering a Key

- Click the GateKeeper icon in the task bar.
- Click the “Register Key” Button
- Touch the Key to the USB Lock
- Once the Key is found, you will be asked to input your user credentials.
- Enter your login name and password and click “Done”

Unregistering a Key

- Click the GateKeeper icon in the task bar.
- Select the Key you want to delete and then click the “Unregister Key” button.

Updating Credentials

- Click the GateKeeper icon in the task bar
- Click on the “Update Credentials” button. This will allow you to update your login credentials

Feedback

- Click the GateKeeper icon in the task bar and select the “Feedback” option.
- Type in your comments and click the “Submit” button.

GateKeeper Smartphone App

The GateKeeper smartphone app enables the user to find the GateKeeper Key using a smartphone.

Requirements:

- Android 4.3 or higher. iOS 7 or higher
- Bluetooth 4.0 enabled smartphone

Installation

- Search for “GateKeeper” app on the Google Play store for your Android device or the Apple App Store for your iPhone.
- Install the app on your smartphone.

Adding a Key

- Press the + button to add a GateKeeper Key to the app
- Place the Key very close to the phone
- A list of available Keys will be displayed
- Select the one with the smallest number written to its right.
- Type in a name for the Key and press “OK”. This will add the Key to your list
- A Key can also be added by clicking the “Switch Keys” button at the bottom and then touching the “+” sign.

Deleting a Key

- Select the Key to be deleted from the “Switch Keys” menu
- Click the “Delete” icon
- Confirm that you want to delete the Key by choosing OK on the dialog box

Renaming a Key

- Select the Key to be edited from the “Switch Keys” menu
- Press the “Edit” icon
- Type a new name of the Key and press “OK”

Locate Function

- Select the Key to be located from the “Switch Keys” menu
- Press the “Locate” button
- If the Key is in range, the app will show how far the Key is with the signal strength bar graph. The buzzer on the Key will also start beeping.
- Once the Key is close to the phone, the app will cause the phone to beep.
- Exit the Locate menu by touching anywhere on the phone

Alert Mode

- Select the Key to be put in alert mode from the “Switch Keys” menu
- Enable the Alert mode by turning on the “Alert” switch
- The phone will beep and display a message whenever the Key goes out of range
- The Alert mode can be disabled by turning off the “Alert” switch

WWW.GKCHAIN.COM