



CorelDRAW[®]

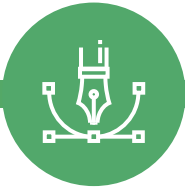
GRAPHICS SUITE 2020

Endlessly creative. Seriously productive.

Break down creative barriers with CorelDRAW[®] Graphics Suite 2020. Find all the professional vector illustration, layout, photo editing and typography tools you need to create and complete important design projects, from virtually any device.

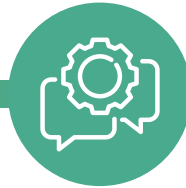
Graphics & Illustration > Photo Editing > Page Layout > Typography

Why choose CoreIDRAW Graphics Suite 2020?



Create

Produce unique illustrations, signage, logos and more—on Windows or Mac—and on the go with CoreIDRAW.app™.



Connect

Collaborate with clients and colleagues using CoreIDRAW.app to gather feedback from one or many reviewers.



Complete

Deliver exceptional results in less time, thanks to seriously productive tools for any type of output.



“User-friendly and extremely flexible!”

Joseph Diaz

Who's it for?

Whether you're a graphics expert, a first-time user, or a business producing in-house design, CoreIDRAW Graphics Suite 2020 has the versatility to satisfy any creative need. It's ideal for:

Graphics and creative professionals

Advertising, printing, illustration, fine art, logos, brochures, sales and marketing collateral, web graphics, and diagrams.

Production professionals

Sign making, large-format printing, screen printing, awards, engraving, vehicle wraps, and fashion design.

Occasional graphics users in businesses

Flyers, posters, booklets, sell sheets, and visual aids.

Competitive advantages

How does CoreIDRAW Graphics Suite stand out from the competition?

Integrated applications

CoreIDRAW provides functionality for graphic design and layout in one application. Corel PHOTO-PAINT™ adds professional photo-editing tools integrated into the workflow.

Native OS experience

Create the way you're used to on Windows or Mac, with the design experience you would expect. CoreIDRAW Graphics Suite 2020 was built from the ground up for your platform of choice.

Flexible, affordable purchasing

Subscribe to CoreIDRAW Graphics Suite for less than the cost of a competitor single-application subscription, or choose a perpetual license to own your software outright. The choice is yours!

What's new?

NEW! Game-changing collaboration tools

Connect with clients and colleagues on designs like never before. Share your concepts with your reviewers in the Cloud, inviting them to view, annotate, and comment directly on your CorelDRAW design file using CorelDRAW.app™.



Irfan Taufik

ENHANCED! Next-level trace results

Enjoy exceptional bitmap-to-vector trace results, thanks to the impressive new AI-powered PowerTRACE™. Benefit from advanced image-optimization options that help improve the quality of a bitmap as you trace it.

NEW! Cutting-edge variable font support

Enjoy unprecedented font flexibility, thanks to variable font support. Interactively experiment with font properties, such as width, weight and slant, to precisely fine-tune the look of text in your designs.

Note: Windows 7 and Windows 8.1 do not support variable fonts.

NEW! AI-powered image improvements

Improve the size and quality of your images with impressive new AI-powered upsampling and artifact removal features. Enlarge images without losing detail and eliminate noise from highly-compressed JPEG images.

NEW! AI-based effects for bitmaps and vectors

Experiment with new Art Style effects that leverage artificial intelligence to replicate techniques from popular art movements. Apply these effects to vector and bitmap objects.

ENHANCED! Serious performance gains

Work more efficiently and achieve better results with a noticeably quicker, more responsive suite of applications. With up to 10x faster performance over our last version, you'll move from concept to completion in record time.

NEW! Inner shadow

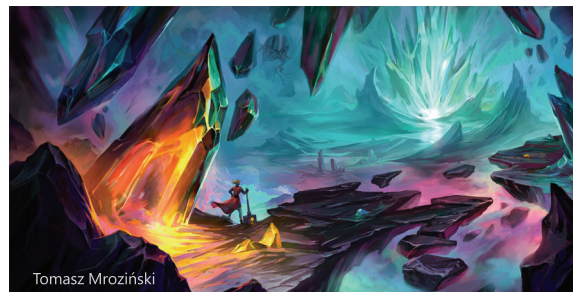
Apply inner shadows to a design element to give it 3D depth and then interactively adjust it on-screen. In a click, the new Inner Shadow tool lets you simulate light falling on objects.

ENHANCED! Find and Replace

Save time and be more productive with new Find and Replace functionality. Now you can locate common drawing components across multiple pages and update their attributes all at once. Replace fills and outlines at the same time, and say farewell to a once time-consuming workflow with the new ability to find and replace colors in Mesh fills.

NEW! Non-destructive effects in Corel PHOTO-PAINT

Apply, modify and experiment with effects on an object, all without altering it. Corel PHOTO-PAINT's new Effects docker (Windows) / Effects inspector (Mac) is your hub for non-destructive editing. Push the boundaries of creativity with 100 new lenses that can be applied non-destructively.



Tomasz Mroziński

Core features

Vector illustration

Turn basic lines and shapes into complex works of art, and create curves with many versatile shaping and drawing tools.

Page layout

Find all the tools you need to create layouts for brochures, multi-page documents and more.

Photo editing

Retouch and enhance your photos with Corel PHOTO-PAINT's powerful layer-based photo editing tools, or use AfterShot 3 HDR to create stunning High Dynamic Range photos from your RAW images.

Typography

Add effects to text like block shadows and contours, fine-tune fonts responsively, fit text to paths, and more, with a complete set of typography tools.

Web graphics tools








Develop captivating web content with a collection of web graphics tools and presets. Ensure any graphic you export for the web has crisp edges, thanks to a series of pixel-perfect tools.

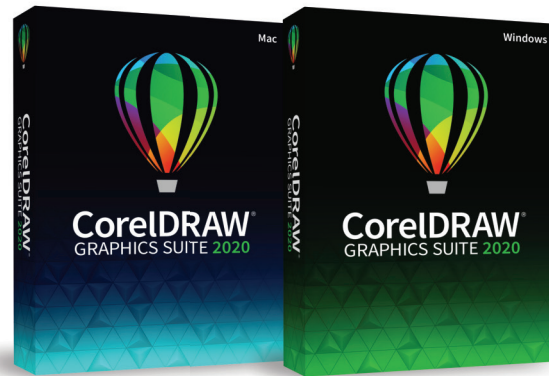
Professional print output

Control color consistency across different media and know your colors are accurate before you print. With CorelDRAW's powerful color management engine, it's easy to prepare your documents for print.

What's included

Main Applications

-  **CorelDRAW® 2020**
Vector illustration and page layout
-  **Corel PHOTO-PAINT™ 2020**
Image editing
-  **Corel Font Manager™ 2020**
Font exploration and management tool
-  **PowerTRACE™**
AI-powered bitmap-to-vector tracing
(included as part of CorelDRAW application)
-  **CorelDRAW.app™**
Online graphic design via web browser
-  **CAPTURE™**
Screen capture tool
(only available in Windows version)
-  **AfterShot™ 3 HDR**
RAW photo editor



Content

- 7,000 clipart, digital images, and vehicle wrap templates
- 1,000 high-resolution digital photos
- Over 1,000 TrueType and OpenType fonts
- 150 professionally designed templates
- Over 600 fountain, vector and bitmap fills

Documentation

- Quick Start Guide
- Quick Reference Card
- Online Help files

Training

- Online training videos
- "Hints" docker
- Discovery files accessible through "Get Started" in the Welcome screen

For more information or to try it free, contact your local reseller or visit www.coreldraw.com

Buying for a large organization?

Corel provides significant licensing flexibility and pricing discounts for larger organizations in the commercial, government and academic spaces. To learn more, visit www.coreldraw.com/business

†Note: Collaboration features are available only through subscription or with an additional purchase plan for perpetual license customers.

Corel, the Corel balloon logo, CorelDRAW, the CorelDRAW balloon logo, CorelDRAW.app, AfterShot, Capture, Corel Font Manager, Corel PHOTO-PAINT and PowerTRACE are trademarks of Corel Corporation. Mac and macOS are trademarks of Apple Inc. All other trademarks mentioned herein are the property of their respective owners. Patents: www.corel.com/patent

System Requirements

Important note: CorelDRAW Graphics Suite 2020 for Windows and CorelDRAW Graphics Suite 2020 for Mac are available as separate products that each support one platform (Windows OR Mac).

Windows

- Windows 10*, Windows 8.1 or Windows 7, in 64-bit or 32-bit**, all with latest Updates and Service Packs
- Intel Core i3/5/7/9 or AMD Ryzen 3/5/7/9/Threadripper, EPYC
- OpenCL 1.2 capable video card (recommended)
- 4 GB RAM
- 4 GB hard disk space
- Multi-touch screen, mouse or tablet
- 1280 x 720 screen resolution at 100% (96 dpi)
- Microsoft Internet Explorer 11 or higher
- Microsoft.NET Framework 4.7.2
- DVD drive optional (for box installation); Installation from DVD requires a download of up to 900 MB

*CorelDRAW Graphics Suite 2020 supports Windows 10, version 1903, 1909 and later versions which may be released during the lifecycle of CorelDRAW Graphics Suite 2020.

**Features that use AI (Artificial Intelligence) require 64-bit applications. AI features are not supported in CorelDRAW Graphics Suite 32-bit applications.

Mac

- macOS Catalina (10.15), 10.14 or 10.13, with the latest revision
- Multicore Intel processor with 64-bit support (4 logical cores or more)
- OpenCL 1.2 capable video card (recommended)
- 4 GB RAM (8 GB RAM or more recommended)
- 4 GB hard disk space for application files (Solid-state drive recommended); Case-sensitive file systems are not supported
- 1280 x 800 screen resolution (1920 x 1080 recommended)
- Mouse or tablet



Corel Corporation
1600 Carling Ave.
Ottawa, ON
Canada K1Z 8R7

© 2020 Corel Corporation. 02/20