

JL INDUSTRIES

**ACCESS PANELS
AND FLOOR DOORS**



Division 08 31 00

**Access Doors and Frames
Floor Doors**

Division 08 31 13.53

**Security Access Doors
and Panels**

Division 08 31 16

Access Panels and Frames

ACTIVAR
INC.

www.activar.com

Construction Products Group



JL INDUSTRIES



AIR LOVERS



SAMSON PRODUCTS



THOMAS ENTERPRISES



HIAWATHA

INTERIOR ACCESS PANELS: FIRE-RATED



MODEL FDWB WITH WALLBOARD BEAD



MODEL FDPW WITH PLASTERGUARD

FIRE-RATED & INSULATED CONCEALED FRAME ACCESS PANELS: FD & FDPW Series

FDWB: Wallboard Bead (Wall or Ceiling):

Frame: 16 gauge with 1" drywall bead that can be taped for a smooth appearance.

Door: 2" thick, insulated 20 gauge steel with continuous hinge.

Finish: Gray powder coat primer.

Latch: Universal turn ring and key lock (U).

FDPW: Plaster (Wall or Ceiling):

Frame: 16 gauge with 3/4" plasterguard.

Door: 2" thick, insulated 20 gauge steel with continuous hinge.

Finish: Gray powder coat primer.

Latch: Universal turn ring and key lock (U).

Options: Custom Colors, Galvanized Finish, Mortise Slam Lock Prep (JM) or Mortise Slam Lock Installed (UMI), 3" Metal Lath for FDPW.

See Optional Colors on Page 12.

Fire-Rating of FDWB & FDPW:

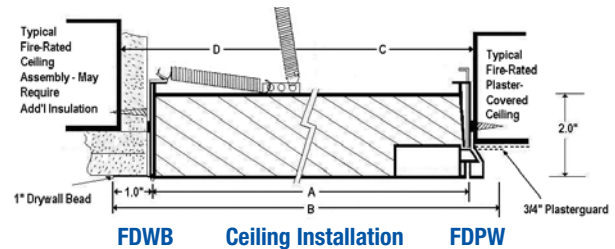
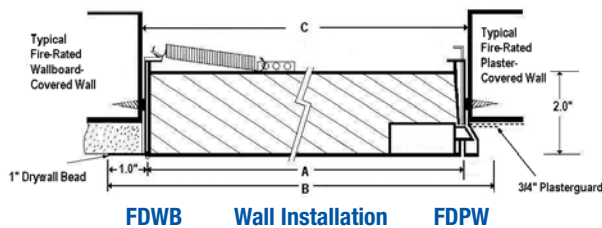
Wall Installation: 1-1/2 hour UL "B" label in a 2 hour fire barrier.

File # R13067-1. Maximum size 48" x 48"

Ceiling Installation: Warnock Hersey listed for floor or ceiling installations with 3 hour non-combustible rating or 1 hour combustible rating.

File # WHI-495-PSH-0163. Maximum size 24" x 36"

CSFM: This product has been approved by the California State Fire Marshall (CSFM) pursuant to Section 13144.1 of the California Health and Safety Code. See CSFM Listing No 3330-1223:101 for allowable values and/or conditions for use concerning material presented in this document. It is subject reexamination, revision and possible cancellation.



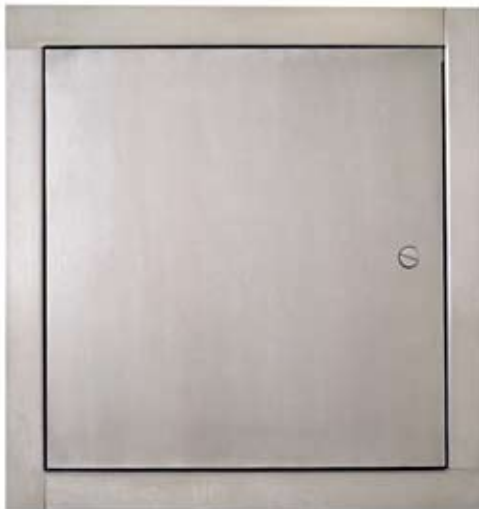
FD SERIES ACCESS PANELS - MODELS FD, FDSS, HGFD, FDWB & FDPW										
Model Size Width x Height	Outside Frame Dimensions		C-Wall Opening Dimensions		D-Opening Dimensions		Approximate Shipping Weight			Latch(es)
			1 1/2 Hour UL "B" Rated Wall		3-Hour Non-Combustible Ceiling					
	Width	Height	Width	Height	Width	Height	FD	FDSS	HGFD	
8" x 8"	10"	10"	8 3/8"	8 3/8"	9 5/8"	9 5/8"	6 lbs.	6 lbs.	11 lbs.	1
10" x 10"	12"	12"	10 3/8"	10 3/8"	11 5/8"	11 5/8"	8 lbs.	8 lbs.	15 lbs.	1
12" x 12"	14"	14"	12 3/8"	12 3/8"	13 5/8"	13 5/8"	10 lbs.	10 lbs.	17 lbs.	1
14" x 14"	16"	16"	14 3/8"	14 3/8"	15 5/8"	15 5/8"	12 lbs.	12 lbs.	22 lbs.	1
16" x 16"	18"	18"	16 3/8"	16 3/8"	17 5/8"	17 5/8"	15 lbs.	15 lbs.	24 lbs.	1
18" x 18"	20"	20"	18 3/8"	18 3/8"	19 5/8"	19 5/8"	17 lbs.	18 lbs.	30 lbs.	1
20" x 20"	22"	22"	20 3/8"	20 3/8"	21 5/8"	21 5/8"	21 lbs.	22 lbs.	51 lbs.	1
22" x 30"	24"	32"	22 3/8"	30 3/8"	21 5/8"	31 5/8"	28 lbs.	29 lbs.	53 lbs.	1
22" x 22"	24"	24"	22 3/8"	22 3/8"	23 5/8"	23 5/8"	26 lbs.	27 lbs.	51 lbs.	1
22" x 30"	24"	32"	22 3/8"	30 3/8"	23 5/8"	31 5/8"	29 lbs.	30 lbs.	53 lbs.	1
22" x 36"	24"	38"	22 3/8"	36 3/8"	23 5/8"	37 5/8"	36 lbs.	37 lbs.	58 lbs.	2
24" x 24"	26"	26"	24 3/8"	24 3/8"	25 5/8"	25 5/8"	27 lbs.	28 lbs.	47 lbs.	1
24" x 36"	26"	38"	24 3/8"	36 3/8"	25 5/8"	37 5/8"	37 lbs.	38 lbs.	60 lbs.	2
24" x 48"	26"	50"	24 3/8"	48 3/8"	-	-	54 lbs.	56 lbs.	85 lbs.	2
30" x 30"	32"	32"	30 3/8"	30 3/8"	-	-	38 lbs.	40 lbs.	62 lbs.	2
32" x 32"	34"	34"	32 3/8"	32 3/8"	-	-	43 lbs.	41 lbs.	81 lbs.	2
36" x 36"	38"	38"	36 3/8"	36 3/8"	-	-	52 lbs.	54 lbs.	92 lbs.	2
36" x 48"	38"	50"	36 3/8"	48 3/8"	-	-	61 lbs.	64 lbs.	114 lbs.	2

Custom Sizes and Modifications Available Upon Request

INTERIOR ACCESS PANELS: FLUSH



MODEL TM



MODEL TMS STAINLESS STEEL

MULTI-PURPOSE FLUSH STEEL ACCESS PANEL:

TM and TMS Series

TM: Standard Panel (Wall or Ceiling)

Frame: 16 gauge steel with a 1" wall flange.

Door: 16 gauge steel access door mounted with mounted with 90° continuous, concealed hinge.

Finish: Gray powder coat primer.

Lock: Flush screwdriver-operated steel cam (C).

TMS: Standard Stainless Steel Panel (Wall or Ceiling)

Frame: 16 gauge stainless steel with 1" wall flange.

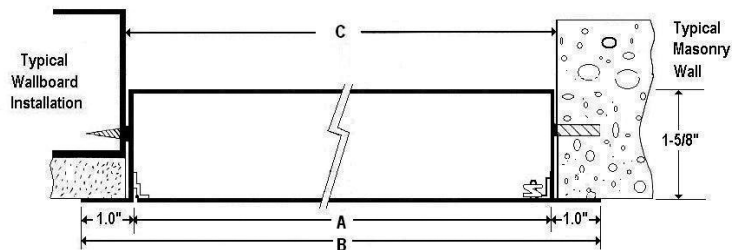
Door: 16 gauge stainless steel access door mounted with 90° continuous, concealed hinge.

Finish: 304 stainless - #4 satin finish.

Lock: Flush screwdriver-operated cam (C).

Options: Custom Colors, Double Door, Louvered Vents, Plexiglass View Window, Removeable Door (no hinge), Rainhood, Gasketing, Galvanized Finish (TMG), Cylinder Lock, Mortise Cam Latch, Mortise Deadbolt Lock, Mortise Slam Latch, Knob Cam, Torx, Spanner or Hex Head Cam.

See Optional Colors and Locks on Page 12.



Model TM

Model TMS

22 Sizes of TM and 8 Sizes TMS In Stock at one of our 7 US Warehouses for Next Day Shipping - See Stock List.

Door Sizes and Wall/Ceiling Openings: Models TM and TMS													
Dimensions in Inches • Weight in Pounds													
A-Model Size Width x Height	B-Outside Frame Dimensions		C-Wall Opening Dimensions		Shipping Weight	Latch(es)	A-Model Size Width x Height	B-Outside Frame Dimensions		C-Wall Opening Dimensions		Approx. Shipping Weight	Latch(es)
	Width	Height	Width	Height				Width	Height	Width	Height		
6" x 6"	8"	8"	6 3/8"	6 3/8"	4 lbs.	1	18" x 18"	20"	20"	18 3/8"	18 3/8"	12 lbs.	3
8" x 8"	10"	10"	8 3/8"	8 3/8"	4 lbs.	1	20" x 24"	22"	26"	20 3/8"	24 3/8"	15 lbs.	4
8" x 12"	10"	14"	8 3/8"	12 3/8"	6 lbs.	1	20" x 30"	22"	32"	20 3/8"	30 3/8"	20 lbs.	4
10" x 10"	12"	12"	10 3/8"	10 3/8"	6 lbs.	1	22" x 22"	24"	24"	22 3/8"	22 3/8"	17 lbs.	4
12" x 12"	14"	14"	12 3/8"	12 3/8"	7 lbs.	1	22" x 30"	24"	32"	22 3/8"	30 3/8"	22 lbs.	4
12" x 16"	14"	18"	12 3/8"	16 3/8"	9 lbs.	1	22" x 36"	24"	38"	22 3/8"	36 3/8"	24 lbs.	5
12" x 18"	14"	20"	12 3/8"	18 3/8"	10 lbs.	1	24" x 24"	26"	26"	24 3/8"	24 3/8"	18 lbs.	4
12" x 24"	14"	26"	12 3/8"	24 3/8"	12 lbs.	2	24" x 30"	26"	32"	24 3/8"	30 3/8"	22 lbs.	5
14" x 14"	16"	16"	14 3/8"	14 3/8"	9 lbs.	1	24" x 36"	26"	38"	24 3/8"	36 3/8"	25 lbs.	5
16" x 16"	18"	18"	16 3/8"	16 3/8"	11 lbs.	1	30" x 30"	32"	32"	30 3/8"	30 3/8"	30 lbs.	5
16" x 20"	18"	22"	16 3/8"	20 3/8"	13 lbs.	2	36" x 36"	38"	38"	36 3/8"	36 3/8"	41 lbs.	5

Custom Sizes and Special Modifications Available Upon Request

Order Format

For Above Models: **Style Code** **Width** **Height** **Lock (C Standard or Optional)** **Optional TM Color**

Example: **TM-2424C-W**

INTERIOR ACCESS PANELS: CONCEALED FRAME



CONCEALED FRAME FLUSH ACCESS PANELS FOR DRYWALL OR PLASTER: WB, PW, and PWE, Series

WB: Wallboard Bead (Wall or Ceiling)

Frame: 16 gauge with 1" drywall bead that can be taped and mudded.
Door: 16 gauge steel with concealed continuous hinge.
Finish: Gray powder coat primer.
Lock: Flush screwdriver-operated cam (C).

PW: Plaster (Wall or Ceiling)

Frame: 16 gauge steel with 3/4" plasterguard for application of plaster.
Door: 16 gauge steel with concealed continuous hinge.
Finish: Gray powder coat primer.
Lock: Flush screwdriver-operated cam (C).

PWE: Plaster (Wall or Ceiling)

Frame: 16 gauge steel with 3/4" plasterguard with an additional 3" wide wing of metal lath for a plaster application to the edge of the door.
Door: 16 gauge steel with concealed continuous hinge.
Finish: Gray powder coat primer.
Lock: Flush screwdriver-operated cam (C).

Options: Cylinder Lock, Knob Cam, Torx, Spanner or Hex Head Cam, Custom Colors, Plexiglass View Window, Removeable Door (no hinge). WB, & PW Options: Also include Mortise Cam Latch, Mortise Deadbolt Lock and Mortise Slam Latch.

See Optional Colors and Locks on Page 12.



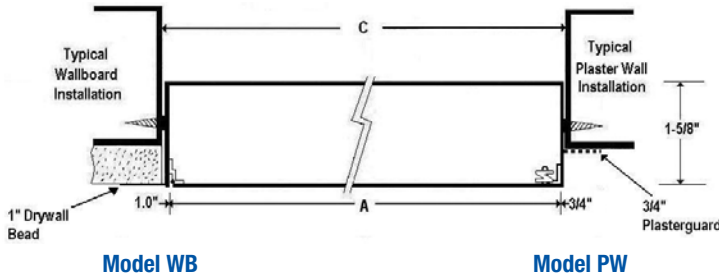
MODEL WB



MODEL PW



MODEL PWE



Model WB

Model PW

Door Sizes and Wall Openings				
A-Model Size	C-Wall Opening Dimension		Shipping Weight	Latch(es)
	WB	PW & PWE	WB,PW,PWE	
8" x 8"	8 1/2" x 8 1/2"	-	4 lbs.	1
10" x 10"	10 1/2" x 10 1/2"	-	5 lbs.	1
12" x 12"	12 1/2" x 12 1/2"	12 1/4" x 12 1/4"	7 lbs.	1
14" x 14"	14 1/2" x 14 1/2"	-	8 lbs.	1
16" x 16"	16 1/2" x 16 1/2"	16 1/4" x 16 1/4"	10 lbs.	1
16" x 20"	-	16 1/4" x 20 1/4"	12 lbs.	1
18" x 18"	18 1/2" x 18 1/2"	18 1/4" x 18 1/4"	12 lbs.	3
22" x 22"	22 1/2" x 22 1/2"	-	16 lbs.	4
22" x 30"	22 1/2" x 30 1/2"	-	21 lbs.	4
24" x 24"	24 1/2" x 24 1/2"	24 1/4" x 24 1/4"	19 lbs.	4

Custom Sizes and Special Modifications Available Upon Request

Most Sizes Above in Stock at One of Our 7 US Warehouses for Next Day Shipping - See Stock List.

Order Format	Style Code	Width	Height	Lock (C Standard or Optional)	Optional Color Code Pg 12
For Above Models:	Style Code	Width	Height	Lock (C Standard or Optional)	Optional Color Code Pg 12
Example: WB-1212SCH-R					

INTERIOR ACCESS PANELS: CONCEALED FRAME



MODEL CTWB



MODEL CT



MODEL CP

CONCEALED FRAME FLUSH ACCESS PANELS FOR PLASTER OR TILE/WALLBOARD INSERT: CP, CT and CTWB Series

CTWB: Recessed Door for Wallboard Insert: (Wall or Ceiling):
Door face is recessed 1" to accept wallboard insert to match surrounding surface. This access door provides the most seamless look of all JL models.

Frame: 16 gauge steel.

Door: 18 gauge steel, recessed 1" for drywall covering, with continuous hinge.

Finish: White powder-coat finish.

Lock: Flush screwdriver-operated cam (C).

CT: Recessed Door for Acoustic Tile Insert: (Wall or Ceiling):

Not for use with suspended ceiling -requires installation into joists.

Door face is recessed 1" to accept application of acoustic tile or wallboard to match surrounding surface.

Frame: 16 gauge steel.

Door: 18 gauge steel, recessed 1" for tile or drywall covering with continuous hinge.

Finish: White power-coat finish.

Lock: Flush screwdriver-operated cam (C).

CP: Recessed Panel for Plaster (Wall or Ceiling)

Door face has Plasterguard in 1/2" Recess, and the frame features 3" expanded metal lath wings to accept application of plaster to match surrounding plaster walls.

Frame: 16 gauge Steel with 3/4" plasterguard and with an additional 3" wide wing of metal lath for a plaster application to the edge of the door.

Door: Metal lath over 18 gauge steel with continuous hinge.

Finish: Gray powder coat primer.

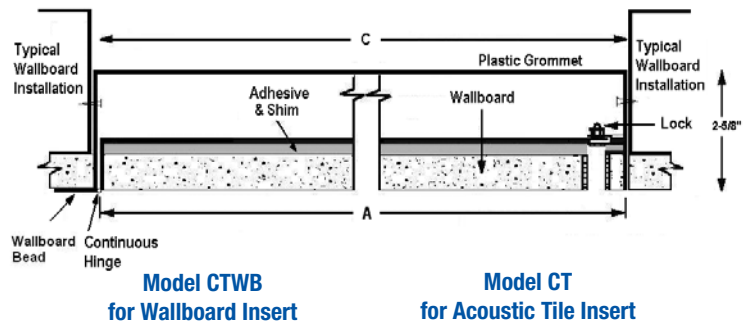
Lock: Flush screwdriver-operated cam (C).

See Optional Colors and Locks on Page 12.

Options: Cylinder Lock, Torx, Spanner or Hex Head Cam. CT and CTWB are available with recessed door depth from 1/4" to 7/8".

Door Sizes and Wall Openings					
A-Model Size	C-Wall Opening Dimension CT, CTWB & CP	Approx. Shipping Weight			Latch(es)
		CT	CTWB	CP	
12" x 12"	12 1/4" x 12 1/4"	7 lbs.	7 lbs.	9 lbs.	1
12" x 24"	12 1/4" x 24 1/4"	11 lbs.	11 lbs.	14 lbs.	2
18" x 18"	18 1/4" x 18 1/4"	12 lbs.	12 lbs.	14 lbs.	3
22" x 30"	22 1/4" x 30 1/4"	21 lbs.	21 lbs.	21 lbs.	4
24" x 24"	24 1/4" x 24 1/4"	19 lbs.	19 lbs.	20 lbs.	4
24" x 36"	24 1/4" x 36 1/4"	27 lbs.	27 lbs.	31 lbs.	5

Custom Sizes and Special Modifications Available Upon Request



Model CTWB for Wallboard Insert

Model CT for Acoustic Tile Insert

Order Format

For Above Models:

Style Code

Width

Height

Lock (C Standard or Optional)

Optional Color Code

Example: CTWB-1212CA

SECURITY ACCESS PANELS



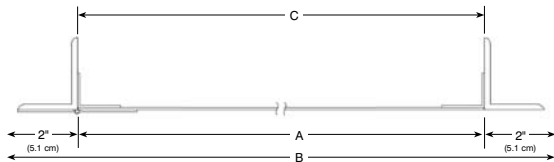
MODEL SP

Shown with Detention Deadbolt Lock Installed

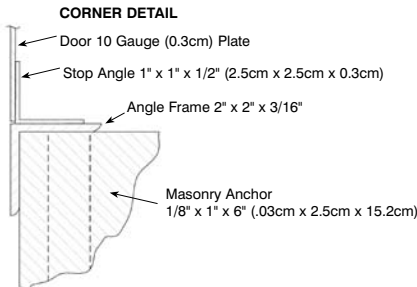


MODEL HSP

Shown with Mortise Deadbolt Lock Installed



Model SP



DETENTION DEADLOCK PREP (DDP)

Provided standard with the SP or HSP access panels.

The door will be prepped for a right or left-handed, heavy-duty lock to be provided and installed by others.

The prep plate is factory welded, primed & painted as an integral part of the door.

FLAT FRAME STEEL SECURITY PANEL: SP Series

Frame: 2" x 2" x 3/16" angle frame with 2" Flange, welded at corners

Door: 10 gauge plate steel door mounted on two heavy-duty detention hinges welded to the frame.

Finish: Gray powder coat primer.

Lock: Detention Deadlock Prep (DDP) provided standard with SP and HSP access panels. Lock to be provided by others. See page 9 for lock options.

Anchors: Heavy duty steel masonry anchors welded to frame at factory.

FLAT FRAME STEEL HIGH SECURITY PANEL: HSP Series

Frame: 2" x 3" x 3/16" angle frame with 2" Flange, welded at corners.

Door: 7 gauge box-formed steel door mounted on two heavy-duty 4" butt hinges welded to the frame.

Finish: Gray powder coat primer .

Lock: Detention Deadlock Prep (DDP) provided standard with SP and HSP access panels. Lock to be provided by others. See page 9 for lock options.

Anchors: Heavy duty steel masonry anchors welded to frame at factory.

Options for SP and HSP: #4 Finish Stainless Steel, Detention Slam Lock Prep (DSP), Mortise Deadbolt Prep (MDP) or Mortise Cylinder Cam Lock Prep (MP)- Locks to be Provided by Others. Detention Deadlock Installed (DD15010), Detention Slam Lock Installed (DD15017), Mortise Deadbolt Installed (MDP-SL-AMP or MDP-SL-1E74), Mortise Cylinder Cam Lock Installed (MP-SL-AMP or MP-SL-1E74).

See Optional Colors on Page 12

See Lock Selections on Page 9.

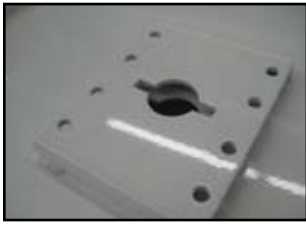
Door Sizes and Wall Openings: Model SP and HSP						
A-Door Size Width x Height	B-Outside Frame Dimensions		C-Wall Opening		Approx. Shipping Weight	Latch(es)
	Width	Height	Width	Height		
8" x 8"	12"	12"	8 3/4"	8 3/4"	16 lbs.	1
10" x 10"	14"	14"	10 3/4"	10 3/4"	20 lbs.	1
12" x 12"	16"	16"	12 3/4"	12 3/4"	24 lbs.	1
14" x 14"	18"	18"	14 3/4"	14 3/4"	29 lbs.	1
16" x 16"	20"	20"	16 3/4"	16 3/4"	32 lbs.	1
18" x 18"	22"	22"	18 3/4"	18 3/4"	38 lbs.	1
24" x 24"	28"	28"	24 3/4"	24 3/4"	52 lbs.	1
24" x 36"	28"	40"	24 3/4"	36 3/4"	72 lbs.	2
24" x 48"	28"	52"	24 3/4"	48 3/4"	90 lbs.	2

Add 1 lb. for Mortise Deadbolt Prep, or 4 lbs. for Detention Lock installed. **For Model SP Panels of 32" or Larger, We Recommend Security Screws be Installed with Lock for Additional Security. Custom Sizes and Modifications Available Upon Request

Order Format

For Above Models: **Style Code** **Width** **Height** **Lock (DDP Standard or Optional)** **Color Code (page 12)**

Example: **HSP-1212MDP-SL-AMP-FBK**



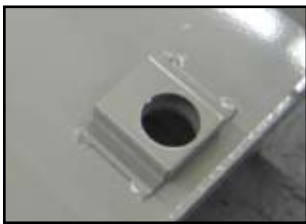
DETENTION SLAM LOCK PREP (DSP)

This option is available at no additional cost and includes a door which is prepped for a detention slam latch to be provided and installed by others. The prep plate is factory welded, primed & painted as an integral part of the door. Lock and mounting bolts are not included. Please specify the manufacturer and model number of the lock to ensure compatibility. (Not available on Security Fire Extinguisher Cabinets)



Mortise Deadbolt Prep (MDP)

This option is available at additional cost and includes a lock mechanism which is prepped for a mortise cylinder and cam to be provided and installed by others. The prep includes a 2-1/2" x 3-1/2" x 1-3/4" case with installed Lori assembly with 1" x 5/8" throw. Lock and mounting bolts are not included. The mortise cylinder must be 1-1/8" (3.2cm) in diameter and the recommended cylinder length is 1-1/2" (3.8 cm). (A longer cylinder can be adapted to it by using a rose spacer. The cam must be an Adam Rite cam.)



Mortise Cylinder Cam Lock Prep (MP)

This option is available at no additional cost and includes a door which is prepped for a mortise cylinder and cam to be provided for and installed by others. Lock and mounting bolts are not included. The mortise cylinder must be 1-1/8" (3.2cm) in diameter and the recommended cylinder length is 1-1/2" (3.8 cm). (A longer cylinder can be adapted to it by using a rose spacer) The cam must be 3/4" (1.91 cm) long, as measured from the edge of the cylinder to the tip of the cam.

Detention Deadlock Installed (DDI5010)

Right-handed, heavy-duty detention lock installed at the factory. The prep plate is factory welded, primed & painted as an integral part of the door. Model 5010 is a medium security deadbolt with a single piece, paracentric key cylinder in a high tensile strength, alloy steel case, keyed 1 side. The deadbolt is fabricated of 1-1/2" x 3/4" hot rolled steel with a 5/8" throw. All steel parts are plated for corrosion resistance. Dimensions 1-1/4" x 4-1/2" x 3". Keys to be ordered separately, please specify the number of keys to be ordered with this lock. Security Torx bolts secure the lock to the door.



Detention Slam Lock Installed (DDI5017)

Right-handed, heavy-duty detention lock installed at the factory. The prep plate is factory welded, primed & painted as an integral part of the door. Model 5017 is a medium security slam latch with a stainless steel latchbolt with 1" x 7/16" throw. Slam-locks automatically when door is closed. Lock is constructed with a single piece, bronze alloy paracentric key cylinder, 5 tempered brass lever tumblers keyed one side(K1) in a high-tensile strength alloy steel case. All steel parts plated for corrosion resistance. Dimensions: 1 1/4" x 4" x 2 3/4". Keys to be ordered separately, please specify the number of keys to be ordered with this lock. Security Torx bolts secure the lock to the door.



Mortise Deadbolt Installed (MDP-SL-AMP or MDP-SL-1E74)

Mortise deadbolt installed at the factory includes a 2-1/2" x 3-1/2" x 1-3/4" case welded to the door with installed Lori assembly with 1" x 5/8" throw. Select from lock models (AMP) in satin chrome with Yale Standard cam and keys (drilled 6 pin, keyed 5 pin), or 1E74 with a blank construction core to be keyed on site. Both locks are machined from solid brass bar stock. The mortise cylinder is 1-1/8" (3.2cm) in diameter and the cylinder length is 1-1/2" (3.8 cm). Security Torx bolts secure the lock to the door.



Mortise Cylinder Cam Lock Installed (MP-SL-AMP or MP-SL-1E74)

Cylinder lock with heavy-duty 7/16" cam installed at the factory. The prep plate is factory welded, primed & painted as an integral part of the door. Select from lock models (AMP) with 2 Yale Standard keys, or 1E74 with a blank construction core to be keyed on site. Both locks are machined from solid brass bar stock. The mortise cylinder is 1-1/8" (3.2cm) in diameter and the cylinder length is 1-1/2" (3.8 cm).



INTERIOR ACCESS PANELS: SPECIALTY



MODEL ATM PANEL

**VERSATILE
MANUFACTURING
CAPABILITIES**

We're Ready to Help—Just Ask Us!

GASKETED ACCESS PANEL: ATM Series

This Gasketed Panel is ideal for laboratories, pressurized rooms, climate-controlled rooms, dusty or high-moisture environments. The frame and door are specially designed to form a tight seal reducing air infiltration.

Frame & Trim: 16 gauge CRS with 3/8" retainer channel for gasket, and 1" trim flange.

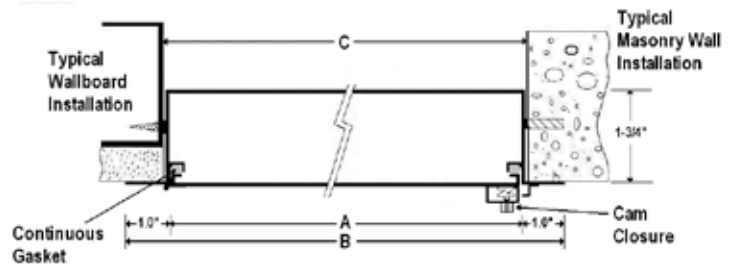
Door: 16 gauge rolled and welded. Cam-operated closure with knurled knob compresses door tightly to gasket.

Gasket: Fully gasketed on all sides with EPDM rubber.

Finish: Gray powder coat primer.

Options: See Optional Colors on Page 12.

A-Model Size Width x Height	B-Outside Frame Dimensions		C-Wall Opening Dimensions		Approx. Shipping Weight	Latch(es)
	Width	Height	Width	Height		
12" x 12"	14"	14"	12 3/8"	12 3/8"	7 lbs.	1
18" x 18"	20"	20"	18 3/8"	18 3/8"	16 lbs.	1
24" x 24"	26"	26"	24 3/8"	24 3/8"	28 lbs.	2
24" x 36"	26"	38"	24 3/8"	36 3/8"	42 lbs.	2



Model ATM



MODEL SMT PANEL

SURFACE-MOUNT ACCESS PANEL: SMT Series

The SMT is an economical surface-mounting panel that quickly and easily installs with screws through the corners of the frame. It is suitable for installation in wallboard or plaster.

Trim & Door: 1" wide, 16 gauge trim with screw holes in each corner for mounting. 16 gauge door operates on a continuous hinge.

Finish: Gray powder coat primer.

Lock: Screwdriver-operated cam lock (C).

Options: #4 Satin Finish Stainless Steel, Custom Colors,

Knob Cam, Torx, Spanner or Hex

Head Cam.

See Optional Colors and locks on Page 12.

A-Model Size Width x Height	B-Outside Frame Dimensions		C-Wall Opening Dimensions		Approx. Shipping Weight	Latch(es)
	Width	Height	Width	Height		
8" x 8"	10"	10"	8"	8"	3 lbs.	1
12" x 12"	14"	14"	12"	12"	7 lbs.	1
16" x 16"	18"	18"	16"	16"	12 lbs.	1
24" x 24"	26"	26"	24"	24"	27 lbs.	4

Order Format

For Above Models: **Style Code** **Width** **Height** **Lock for SMT Only (C Standard or Optional)** **Color Code (page 12)**

Example: **ATM-1818**



ALUMINUM ANGLE FLOOR DOOR: AAF Series

Construction: Frames are extruded aluminum shapes specially designed for floor doors. This door is made from reinforced 1/4 diamond plate for greater strength.

Hardware: Stainless steel hinges are bolted to the door and frame to minimize galvanic corrosion. All fasteners are tamperproof stainless steel bolts. Stainless steel slam locks, gas assist opener, hold open arm.

Finish: Mill with bituminous coating below grade.

Load: 300 lbs./ft.²



Model	Clear Opening	Single (S) Door	Approx. Weight
AAF-2424S	23" x 23"	S	60 lbs.
AAF-2436S	23" x 35"	S	76 lbs.
AAF-3030S	29" x 29"	S	81 lbs.
AAF-3036S	29" x 35"	S	92 lbs.
AAF-3636S	35" x 35"	S	100 lbs.
AAF-3048S	29" x 47"	S	115 lbs.
AAF-3648S	35" x 47"	S	118 lbs.
AAF-4242S	41" x 41"	S	120 lbs.

Custom Sizes Available Upon Request

Model	Clear Opening	Double (D) Door	Approx. Weight
AAF-4848D	47" x 47"	D	154 lbs.
AAF-4860D	47" x 59"	D	173 lbs.
AAF-4872D	47" x 71"	D	208 lbs.
AAF-6060D	59" x 59"	D	215 lbs.

Custom Sizes Available Upon Request

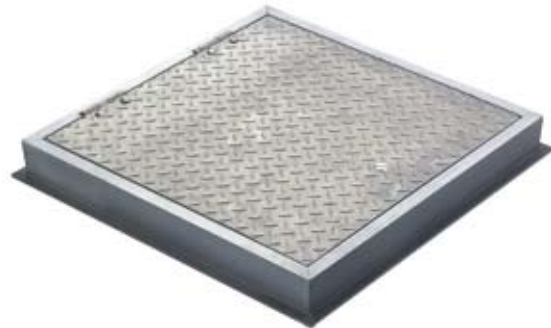
ALUMINUM GUTTER FLOOR DOOR: AGF Series

Construction: The door frames are an engineered gutter frame design in extruded aluminum shapes specially designed for floor doors. The gutter is equipped with 1 1/2" FTP drain coupling allowing for water runoff. The door is made from reinforced 1/4" diamond plate for greater strength. The door is hinged such that when open, the door does not penetrate the gutter, thus preventing problems due to freezing or contaminating build-up.

Hardware: Stainless steel hinges are bolted to the door and frame to minimize galvanic corrosion. All fasteners are tamperproof stainless steel bolts. Stainless steel slam locks, gas assist opener, hold open arm.

Finish: Mill with bituminous coating below grade.

Load: 300 lbs./ft.²



Model	Clear Opening	Single (S) Door	Approx. Weight
AGF-2424S	20 1/2" x 20 1/2"	S	60 lbs.
AGF-2436S	20 1/2" x 32 1/2"	S	76 lbs.
AGF-3030S	26 1/2" x 26 1/2"	S	81 lbs.
AGF-3036S	26 1/2" x 32 1/2"	S	92 lbs.
AGF-3636S	32 1/2" x 32 1/2"	S	100 lbs.
AGF-3048S	26 1/2" x 44 1/2"	S	115 lbs.
AGF-3648S	32 1/2" x 44 1/2"	S	118 lbs.
AGF-4242S	38 1/2" x 38 1/2"	S	120 lbs.

Custom Sizes Available Upon Request

Model	Clear Opening	Double (D) Door	Approx. Weight
AGF-4848D	44 1/2" x 44 1/2"	D	154 lbs.
AGF-4860D	44 1/2" x 56 1/2"	D	173 lbs.
AGF-4872D	44 1/2" x 68 1/2"	D	208 lbs.
AGF-6060D	56 1/2" x 56 1/2"	D	215 lbs.

Custom Sizes Available Upon Request

OPTIONS

LOCK OPTIONS FOR: TM, TMS, WB, PWE, SMT AND PW Series



CYLINDER LOCK (L)



MORTISE CAM LATCH PREP (MP)
INSTALLED (MPI)



MORTISE DEABOLT PREP (LL)
INSTALLED (LLI)



MORTISE SLAM LATCH PREP (UM)
INSTALLED (UMI)



KNOB CAM (KK)



TORX HEAD CAM (CT)



HEX HEAD CAM (CA)



SPANNER HEAD CAM (SHC)

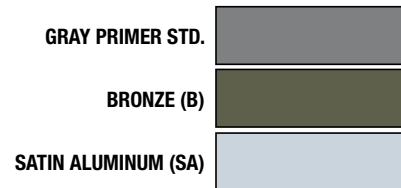
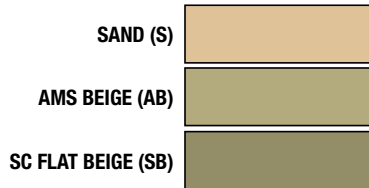


RAINHOOD (RH)



GASKETING (CG)

COLOR OPTIONS:



Note: Colors are approximate. For color/finish samples contact customer service.

WARRANTY: All access panel products carry a one year warranty after date of shipment against defects in materials and workmanship. We will replace or repair any product found defective within this period at our discretion. No other warranty express or implied is valid.

MANUFACTURING/WAREHOUSING LOCATIONS



ACPG WEST COAST
WAREHOUSE
RENTON, WASHINGTON



ACPG HEADQUARTERS
JL INDUSTRIES
4450 W. 78TH STREET CIRCLE, BLOOMINGTON, MN 55435
PHONE: 800-554-6077 FAX: 952-835-2218
E-MAIL: JL@JLINDUSTRIES.COM
WEB SITE: WWW.JLINDUSTRIES.COM

ACPG CHICAGO
WAREHOUSE
WOOD DALE, ILLINOIS

ACPG EAST COAST
WAREHOUSE
LANCASTER, PENNSYLVANIA



ACPG WEST COAST
SAMSON PRODUCTS
6285 RANDOLPH STREET, COMMERCE, CA 90040
PHONE: 800-554-6077 FAX: 952-835-2218
E-MAIL: SALES@SAMSONPRODUCTS.COM
WEB SITE: WWW.SAMSONPRODUCTS.COM

ACPG SOUTH
WAREHOUSE
GRAND PRAIRIE, TEXAS

ACPG ATLANTA
WAREHOUSE
ATLANTA, GEORGIA



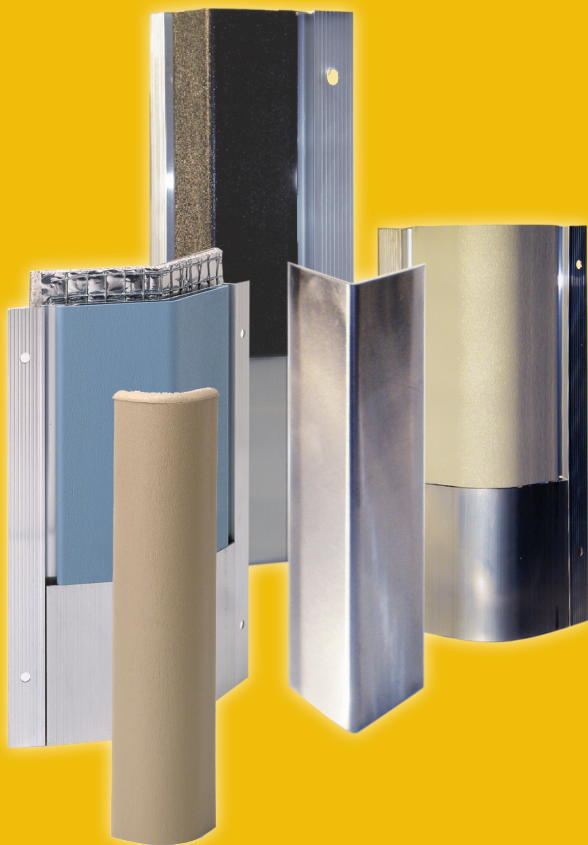
ACPG SOUTHEAST
THOMAS ENTERPRISES
5765 CORPORATION CIRCLE, FORT MYERS, FL 33905
PHONE: 800-780-7501 FAX: 239-693-7501
E-MAIL: SALES@THOMASE.COM
WEB SITE: WWW.THOMASE.COM

The Activar Construction Products Group (ACPG) consists of 5 affiliated companies that serve the commercial construction industry. Our multiple product lines are a single source for architects and distributors. Air Louvers manufactures products for the openings market with door lites, louvers and rated-glass. Hiawatha is known for its quality architectural door hardware and frameless shower door products. JL Industries is an industry leader in fire protection, providing fire extinguishers, AEDs and cabinets, access panels, roof opening products and entrance flooring systems. Samson Products manufactures many of the products sold under the JL label and distributes JL products on the West Coast. Thomas Enterprises is our Southeast distributor for JL products and has a state-of-the-art aluminum fabrication facility for fire extinguisher cabinets sold under the Thomas and JL labels.



JL INDUSTRIES

CORNER GUARD SYSTEMS



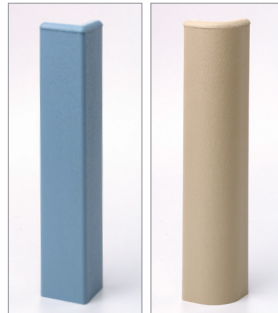
**Division 10 26 13
Corner Guards**

ACTIVAR
INC. www.activar.com
Construction Products Group

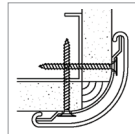


SAF-T-GUARD SYSTEMS

VINYL CORNER GUARD SYSTEM: SGV Series

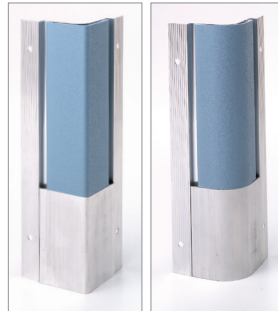


SGVS-90-2 SGVR-90-2

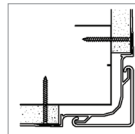


Construction: Continuous aluminum retainer with high-impact vinyl acrylic cover completely conceals frame. Installations less than 8' high provided with end cap.
Length: 48" standard". Up to 20'.
Wing Length: 2" and 3".
Angle: 90° (2" & 3" wing), 135° (3" wing).
Corner Type: Square (S), Radius (R) or Endwall (EW).
Mounting: Installed with screws through aluminum retainer to wallboard surface.
Flame Resistance: Meet Class 1/A requirements for flame spread and smoke density.

FLUSH VINYL CORNER GUARD SYSTEM WITH ALUMINUM BASE & WALLBOARD BEAD: SGVA Series



SGVAS-90-3 SGVAR-90-3

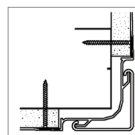



Construction: Continuous aluminum retainer with 4" cover base. High-impact vinyl acrylic cover snaps into place concealing frame except for 3/16" trim.
Length: 48" standard". Up to 20'.
Wing Length: 2" and 3" with 13/16" tapered wallboard bead for taping over frame.
Angle: 90° (2" & 3" wing), 135° (3" wing).
Corner Type: Square (S), Radius (R), or Endwall (EW).
Mounting: Installed with screws through aluminum retainer to wallboard surface.
Flame Resistance: Meet Class 1/A Requirements for Flame Spread and Smoke Density.

FLUSH VINYL CORNER GUARD SYSTEM 1 OR 2 HR FIRE-RATED WITH ALUMINUM BASE & WALLBOARD BEAD: SGVAF Series



SGVAF1R-90-3 SGVAF2S-90-3



Construction: Continuous aluminum retainer with 4" cover base. High-impact vinyl acrylic cover snaps into place concealing frame except for 3/16" trim.
Fire-Rated Insulation: 1 or 2 hour fire-rated material is adhered to the wall side of the corner guard. 
Length: 48" standard". Up to 20'.
Wing Length: 2" and 3" with 13/16" tapered wallboard bead for taping over frame.
Angle: 90° (2" & 3" wing), 135° (3" wing).
Corner Type: Square (S) or Radius (R) or Endwall (EW).
Mounting: Installed with screws through aluminum retainer to wallboard surface.
Flame Resistance: Meet Class 1/A Requirements for Flame Spread and Smoke Density.
Ordering: Use SGVAF1 for 1 Hour and SGVAF2 for 2 Hour.

Endwalls Includes Matched Sheet Wall Protection



SCVA-EW SCVEW

Color Selection for All Models on This Page: See Page 2



CORNER GUARDS: STAINLESS STEEL, VINYL & LEXAN

STAINLESS STEEL: CGSS Series MEDIUM TO HEAVY IMPACT



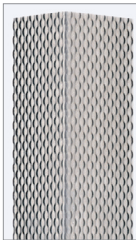
Finish & Material: 18 Gauge, Type 304, 32D #4 Satin Finish (BHMA 630).
Length: 48" standard". Up to 96".
Wing Length: Standards are 1-1/2", 2", 2-1/2", 3" and 3-1/2". Others available upon request.
Angle: Standards are 90°, 135° or "U" Shape.
Mounting: Screws and pre-drilled holes, or adhesive strips upon request.
Flame Resistance: Non-flammable.

CLEAR LEXAN® POLYCARBONATE: CGL Series LIGHT TO MEDIUM IMPACT

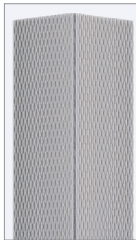


Length: 48" or 8' standard". Others available upon request.
Wing Length: Standards are 3/4", 1-1/8", 1-1/2", 2" and 2-1/2". Others available upon request.
Angle: Standards are 90°, 135° (135° only available in 2-1/2" wing).
Mounting: Screws and pre-drilled holes.
Flame Resistance: None.

TEXTURED STAINLESS STEEL: CGSST Series LIGHT TO MEDIUM IMPACT



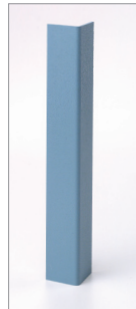
CGSST-90-B



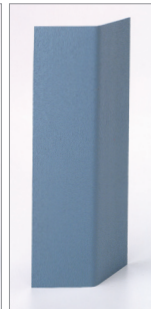
CGSST-90-R

Finish & Material: Type 304 stainless, gauge varies by texture selected.
Length: 48" standard". Other lengths available upon request.
Wing Length: Standards are 1-1/2", 2", 3" and 3-1/2". Others available upon request.
Angle: Standards are 90°, 135° or "U" Shape. Others available upon request.
Mounting: Adhesive, or screws and pre-drilled holes.
Flame Resistance: Non-flammable.
Textures: (BW) Basketweave, (B) Bounce, (C) Cobblestone, (HA) Hammered, (HC) Honeycomb, (L) Leather, (PB) Pebble, (PS) Pinstripe, (S) Stucco, (W) Wave, (R) Rice, (BR) Brick.
 See Website to View Samples.

VINYL ACRYLIC: CGVA Series LIGHT TO MEDIUM IMPACT



CGVA-90-1.5



CGVA-135-2.75

Finish & Material: Lightly textured, formed .078" Vinyl Acrylic.
Length: 48" standard". Up to 18'.
Wing Length: Any width 1-2 3/4" Others available upon request.
Angle: Standards are 90° and 135°. Others available upon request.
Mounting: Adhesive, or Screws and pre-drilled holes.
Flame Resistance: Meet Class 1/A Requirements for Flame Spread and Smoke Density.
Ratings: ASTM D4226 and ASTM D256.

Colors for all Vinyl Corner Guards:

Group 1 (Quickship) - (09) Moonlight, (56) Linen, (01) Parchment, (59) Canvas, (18) Desert Beige, (06) Morning Mist, (05) Mojave, (02) Pueblo.

Group 2 (Standard) - (26) Birchbark, (23) Glacier Blue, (53) Ivory, (37) Misty Peach, (27) Cornflower, (17) Jasmine, (04) Dolphin, (13) Silk, (41) Sky Blue, (11) Winter Sky, (40) Taupe, (54) Cloud, (39) Teal, (19) Black. Others available upon request. See Website to view Color Samples.

Order Format: _____ - _____ - _____ - _____ - _____ Example: CGSST-90-3.5-60-PB
 Model Degree of Angle Wing Length Total Length Texture or Color SGVAF2S-135-3-90-23

TO ORDER CALL 1-800-554-6077 OR VISIT WWW.JLINDUSTRIES.COM

HEADQUARTERS: 4450 WEST 78TH ST CIRCLE, BLOOMINGTON, MN 55435-5416 **PH:** 800-554-6077 **FAX:** 952-835-2218
EMAIL: SALES@JLINDUSTRIES.COM **WWW.ACTIVARCPG.COM** **ACPG WEST COAST (SAMSON PRODUCTS):** COMMERCE, CA
ACPG SOUTHEAST (THOMAS ENTERPRISES): FT MEYERS, FL **PH:** 239-693-7500
WAREHOUSES: DALLAS TX, LANCASTER PA, CHICAGO IL, ATLANTA GA
AN ACTIVAR CONSTRUCTION GROUP COMPANY

The Activar Construction Products Group (ACPG) consists of 5 affiliated companies that serve the commercial construction industry. Our multiple product lines are a single source for architects and distributors. Air Louvers manufactures products for the openings market with door lites, louvers and rated-glass. Hiawatha is known for its quality architectural door hardware and frameless shower door products. JL Industries is an industry leader in fire protection, providing fire extinguishers, AEDs and cabinets, access panels, roof opening products and entrance flooring systems. Samson Products manufactures many of the products sold under the JL label and distributes JL products on the West Coast. Thomas Enterprises is our Southeast warehouse distributor for JL products and has a state-of-the-art aluminum fabrication facility for fire extinguisher cabinets sold under the Thomas and JL labels.

SUBMITTALS AVAILABLE AT: WWW.JLINDUSTRIES.COM

CG1002



JL INDUSTRIES

**LIFE SAFETY
EQUIPMENT**



When someone collapses from Sudden Cardiac Arrest, immediate CPR and use of an AED are essential for any chance of recovery. The AED analyzes the heart rhythm of the victim, and if necessary, a computerized command will instruct the user to press a button to deliver an appropriate shock to restore the normal operation of the heart. These devices are failsafe and will not cause injury to the user, nor will they deliver a shock if none is needed. For patients in "VF", studies show that if early defibrillation is provided within the first minute, the odds are 90 percent that the victim's life can be saved. After that, the rate of survival drops ten percent with every minute. As many as 30 to 50 percent would likely survive if CPR and AEDs were used within five minutes of collapse.
Sudden Cardiac Arrest Association 3/2009



Division 10 43 13
**Automatic External
Defibrillators**
**Emergency Oxygen
Defibrillator and
Oxygen Cabinets**

ACTIVAR
INC.

www.activar.com

Construction Products Group



LIFE SAFETY



FREESTANDING AED CABINET STAND: 1480 Series

Shown on the Opposite Cover is Model 1483F12. This Decorative Stand with a Surface-Mount Steel or Aluminum Cabinet can be an Attractive Addition to a Building's Décor by Coordinating Finishes and Paint Colors.

Construction: 52" structural steel tubing and steel baseplate. White epoxy or silver metallic finish standard, with custom colors also available.

DUAL CABINET FOR AED AND EMERGENCY OXYGEN: OLYMPUS 1900 Series



1913F12

Provide More Lifesaving Equipment by Including Emergency Oxygen with Your AED.

Door & Trim Construction: CRS with white powder-coat finish, #4 stainless steel or clear anodized aluminum. 1-3/4" trim on face and door, mounted in a 5/8" door stop and attached by a continuous hinge. All models feature a clear acrylic window with graphics, zinc-plated handle and roller catch.

Trim Style & Depth: Surface-mount has a square edge. Recessed – 3/8" flat trim, Semi-Recessed – 1-1/2" square edge or 3" rolled edge.

Alarm: 85 db Commander (audible) alarm standard.

Oxygen: Accommodates up to "D" size cylinder. Available with patented T²O² oxygen system that features easy-to use automatic flow system.

Tub: White powder coated CRS. Fire-rated option available.

WEATHER-RESISTANT AED CABINETS: 1499 Series



Protect Your AED From Moisture and Dust with this Durable Surface-Mount Cabinet.

Construction: Molded UV-Inhibited ABS white Korad™ with fully-gasketed door and clear acrylic window with graphics. Includes exterior-grade handle with lockable latch and stainless steel hinges.

Size I.D.: 17" W x 17" H x 6-1/2" D

AUTOMATED EXTERNAL DEFIBRILLATORS: LS-AED Series

All Defibrillators Meet Local and National Standards for Emergency Care in Public Places and are FDA-Approved. JL has Several Models Available Which All Feature Automatic Heartbeat Detection, Require Minimum Training to Operate and Include a Training Video.

AED CABINETS TO FIT MOST BRANDS: 1400 LIFESTART Series



1437 W/Siren Strobe

Designed to Accommodate Most AED's on the Market Today.

Door & Trim Construction: CRS with white powder-coat finish, #4 stainless steel or clear anodized aluminum. 1-3/4" trim on face. Formed door with 1-3/4" trim, mounted in a 5/8" door stop with zinc-plated handle and roller catch and continuous hinge. View AED through a clear acrylic window with graphics.

Trim Style & Depth: Surface-mount has a square edge. Recessed – 3/8" flat trim, Semi-Recessed – 1-1/2" square edge or 3" rolled edge.

Alarm: 85 db Commander (audible) alarm standard.

Tub: White powder-coated CRS. Fire-rated available.

METAL AED CABINET OPTIONS AND ACCESSORIES

Siren Strobe Alarm and 85 db Alarm (9V battery) (SA)
Alarm Connectivity Switch: Magnetic Door contact (14MAG) or Roller Reed Contact (14RR).

Saf-T-Clasp for Visual Notification if Door has been Opened (14STC)

Custom Door Graphics

AED Wall Signs

Architectural Bronze or Brass

Custom Sizes & Paint Colors

Fire-Rated Cabinet (FX)



1415 Recessed

Lifestart Series for Any Brand for AED

Trim and Door Material and Series #				Tub I.D.			Frame O.D.		Wall Opening Non-Rated			Wall Opening Fire-Rated Option		
Steel	Aluminum	Stainless Steel	Trim Style	A	B	C	E	F	W	H	D	W	H	D
1415	1425	1435	flat trim	14"	14"	6 3/4"	17 1/2"	17 1/2"	15 1/4"	15 1/4"	6 1/2"	16 7/8"	16 7/8"	7 5/8"
1416	1426	1436	1 1/2"	14"	14"	6 3/4"	17 1/2"	17 1/2"	15 1/4"	15 1/4"	5 7/8"	16 7/8"	16 7/8"	6 1/2"
1417	1427	1437	3"	14"	14"	6 3/4"	17 1/2"	17 1/2"	15 1/4"	15 1/4"	*3 3/4"	16 7/8"	16 7/8"	*4 3/4"
1413	1423	1439	surf. mtd.	17 3/8"	17 3/8"	7"	17 1/2"	17 1/2"	-	-	-	-	-	-

* Model 1427 has 2-1/2" trim

The New Side-by-Side Olympus Series for AED & Extinguisher or Oxygen

Trim and Door Material and Series #				Tub I.D.			Frame O.D.		Wall Opening Non-Rated			Wall Opening Fire-Rated Option		
Steel	Aluminum	Stainless Steel	Trim Style	W	H	D	E	F	W	H	D	W	H	D
1915	1925	1635	flat trim	18"	18"	8"	21 3/8"	21 1/8"	19"	19"	7 3/4"	20"	20 1/8"	8 5/8"
1916	1926	1936	1 1/4"	18"	18"	8"	21 3/8"	21 1/8"	19"	19"	6 7/8"	20"	20 1/8"	7 3/4"
1917	1927	1937	2 1/2"	18"	18"	8"	21 3/8"	21 1/8"	19"	19"	5 5/8"	20"	20 1/8"	6 1/2"
1913	1923	1939	surf. mtd.	21 3/16"	21 3/16"	8 1/2"	21 3/8"	21 1/8"	-	-	-	-	-	-

CUSTOM SIZES AVAILABLE UPON REQUEST

All models ADAC-compliant except Surface-Mounted

ACPG AND JL INDUSTRIES HEADQUARTERS

4450 W. 78TH STREET CIRCLE, BLOOMINGTON, MN 55435

PHONE: 800-554-6077

FAX: 952-835-2218

E-MAIL: SALES@JLINDUSTRIES.COM

WEB SITE: WWW.JLINDUSTRIES.COM

ACPG SOUTHEAST AND THOMAS ENTERPRISES

FORT MYERS, FL

PHONE: 800-780-7501

FAX: 239-693-7501

E-MAIL: SALES@THOMASE.COM

ACPG WEST COAST AND SAMSON PRODUCTS

COMMERCE, CA

PHONE: 800-554-6077

FAX: 952-835-2218

E-MAIL: SALES@SAMSONPRODUCTS.COM

ACPG WAREHOUSES

PENNSYLVANIA, GEORGIA, TEXAS,

ILLINOIS WASHINGTON



The Activar Construction Products Group (ACPG) consists of 5 affiliated companies that serve the commercial construction industry. Our multiple product lines are a single source for architects and distributors. Air Louvers manufactures products for the openings market with door lites, louvers and rated-glass. Hiawatha is known for its quality architectural door hardware and frameless shower door products. JL Industries is an industry leader in fire protection, providing fire extinguishers, AEDs and cabinets, access panels, roof opening products and entrance flooring systems. Samson Products manufactures many of the products sold under the JL label and distributes JL products on the West Coast. Thomas Enterprises is our Southeast warehouse distributor for JL products and has a state-of-the-art aluminum fabrication facility for fire extinguisher cabinets sold under the Thomas and JL labels.

SUBMITTALS AVAILABLE AT: WWW.JLINDUSTRIES.COM

LS0911



JL INDUSTRIES

**FLOOR GRATINGS
AND MATS**



Division 12 48 13
**Entrance Floor Mats
and Frames**

Division 12 48 19
Entrance Floor Gratings

ACTIVAR
INC.

www.activar.com

Construction Products Group



JL INDUSTRIES



AIR
LOUVERS



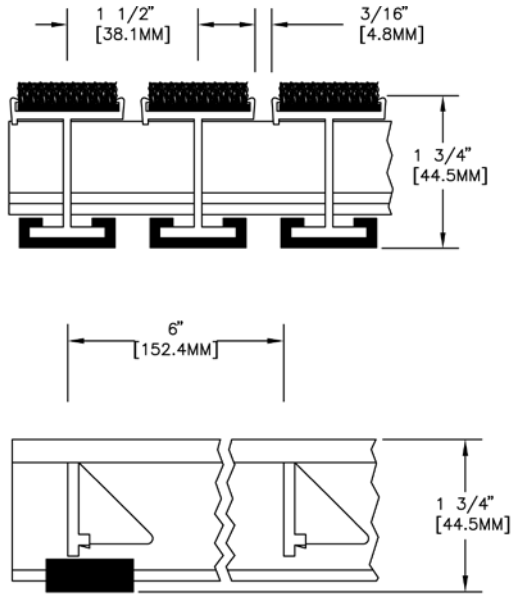
SAMSON PRODUCTS



THOMAS
ENTERPRISES



HIAWATHA



JL-900-909 SERIES



RIGID ALUMINUM GRATINGS FOR HIGH TRAFFIC AREAS

- **Gratings Remove Easily for Cleaning**
- **3/16" Rail Spacing Prevents the Smallest Heel from Catching, yet Allows Dirt and Sand to Collect Below the Surface**
- **6" Keylock Spacing is Quieter and Stronger than 8", 10", Welded or Bolted Systems**
- **Wide Selection of Durable and Colorful Treads**
- **1500 lb. Wheel Load Capacity**

TREAD OPTIONS FOR THE 900 SERIES ALUMINUM GRATINGS

JL-900: Carpet

Rail Finish: Any Color

Frame: 900 Series Frame Options

LEED: 46

JL-901: Vinyl

Rail Finish: Any Color

Frame: 900 Series Frame Options

LEED: 46

JL-902: Serrated Aluminum Surface

Meets NFPA 258 standards, NFPA 253 and FTM Standard 372

Rail Finish: Clear

Frame: 900 Series Frame Options

LEED: 50

JL-903: Abrasive-Coated Aluminum

Rail Finish: Clear only

Frame: 900 Series Frame Options

LEED: 44

JL-904: Abrasive-Coated Vinyl

Rail Finish: Any Color

Frame: 900 Series Frame Options

LEED: 44

JL-905: Tuff Tread

Rail Finish: Any Color

Frame: 900 Series Frame Options

LEED: 46

JL-907: Premium Carpet

Rail Finish: Any Color

Frame: 900 Series Frame Options

LEED: 46

JL-909: Buffed Rubber Inserts

Tread Color: Grey, other colors additional charge

Rail Finish: Any Color

Frame: 900 Series Frame Options

LEED: 15.61

#1 Specify Tread Option

#2 Specify Tread Color from page 8

#3 Specify Rail Finish Color from Rail & Frame Finish Colors

#4 Specify Frame Style from 900 Series Frame Options Chart

#5 Find LEED Rating on page 7

RAIL AND FRAME FINISH COLORS

Mill		Light Bronze	
Clear Anodized		Black	
Dark Bronze		Medium Gold	
Medium Bronze		Champagne	



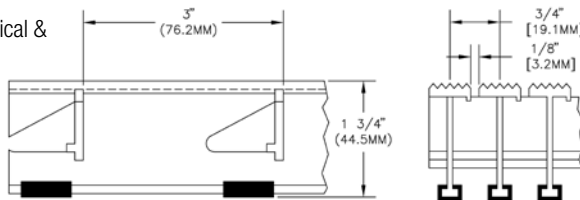
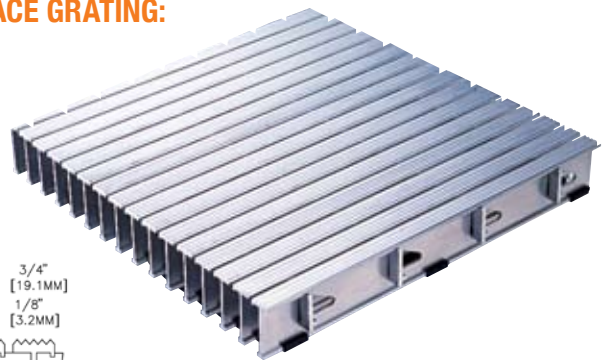
ALUMINUM GRATINGS FOR HIGH TRAFFIC ENTRYWAYS

- Gratings Remove Easily for Cleaning
- 1/8" Rail Spacing Prevents the Smallest Heel from Catching, yet Allows Dirt and Sand to Collect Below the Surface
- Stronger and Quieter than 8" Spacer, Welded or Bolted Systems
- 1500 lb. Wheel Load

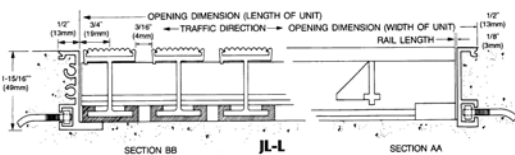
**JL-906S (SERRATED) & JL-906P (SMOOTH) TOP RAIL SURFACE GRATING:
Thin Line 3/4" O.C. Rails**

Extruded full-length serrated tread 5/8" (15.9mm) wide. Keylock bars are spaced 3" (76.2mm) on center with extruded vinyl cushions spaced 24" (609.6 mm) on center. Meets NFPA 258 standards, NFPA 253 and FTM Standard 372.

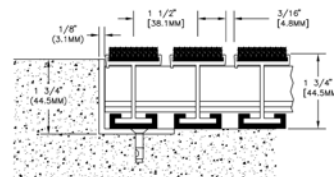
Rail Finish: Mill
Frame: 900 Series Frame Options
LEED: 50
EQ Credit 5: Indoor Chemical & Pollutant Source Control



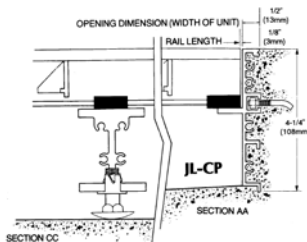
FRAME OPTIONS: 900 Series



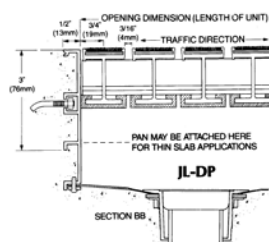
JL-L: Recessed level-bed frame—1500 lbs./ft.² uniform load, 1 15/16" (49.2mm) deep by 1/2" (12.7mm) profile aluminum alloy. Available in any color frame.



JL-LAF: Recessed angle frame—1500 lbs/ftw uniform load, 1-3/4" (44.5mm) deep by 1/8" (3.2mm) profile aluminum extrusion. Available in any color frame.

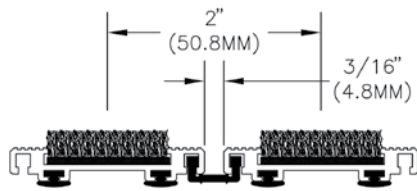


JL-CP: Concrete Pit—recessed pit with adjustable cross-supports 300 lbs./ft.² uniform load (higher loads available), 4-1/4" (108mm) by 1/2" (12.7mm) profile aluminum alloy with adjustable cross-supports 4" O.C.

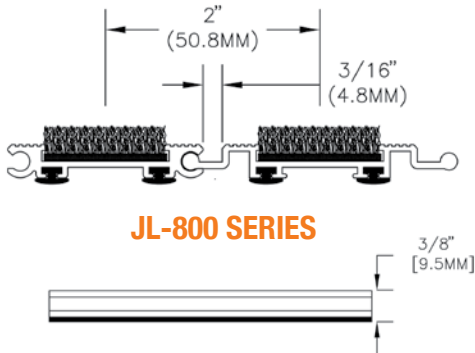


JL-DP JL-CP: Recessed concrete pit frame with aluminum drain pan. 4-1/4" (108mm) by 1/2" (12.7mm) profile aluminum alloy with adjustable cross-supports 4" O.C. Available in any color frame. Drain pan is mill aluminum.

700 & 800 SERIES



JL-700 SERIES



JL-800 SERIES



LOWEST PROFILE ALUMINUM ROLL-UP MAT WITH LOW-NOISE LDPE HINGE DESIGN: 700 SERIES

- Most Economical Entry Mat System
- Recycled LDPE Hinges
- Hinge System Eliminates the Clatter Associated with Metal Hinge Systems
- 350 lb. Uniform Load Capacity
- Any Color Frame and Rail Finish

INTEGRAL ALUMINUM HINGE DESIGN: 800 SERIES

- 3/8" Profile
- Effective for Custom-Fabricated Applications
- Any Color Selection for Rail Tread Finish
- Integral Aluminum Hinge System is More Durable than Plastic Hinge Systems
- 350 lb. Uniform Load Capacity

TREAD INSERT OPTIONS: 700 & 800 Series

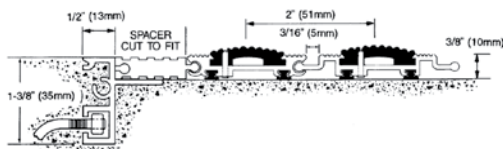
JL-700: Carpet LEED: 50	JL-704: Abrasive-Coated Vinyl LEED: D	JL-801: Vinyl inserts LEED: 37
JL-701: Vinyl LEED: 59	JL-705: Tuff Tread LEED: 50	JL-804: Abrasive-Coated Vinyl LEED: 46
JL-702: Serrated Aluminum Meets NFPA 258 standards, NFPA 253 and FTM Standard 372 LEED: 41.47	JL-707: Premium Carpet LEED: 50	JL-805: Tuff Tread inserts LEED: 49
JL-703: Abrasive-Coated Aluminum LEED: 49	JL-709: Buffed-Rubber LEED: 10	JL-807: Premium Carpet inserts LEED: 49
	JL-800: Carpet inserts LEED: 49	

- #1 Specify Tread Option
- #2 Specify Tread Color from page 8
- #3 Specify Rail Finish Color from Rail and Frame Finish Colors
- #4 Specify Frame Style from 700/800 Series Frame Options Chart
- #5 Find LEED Rating on Page 7

RAIL AND FRAME FINISH COLORS

Mill		Light Bronze	
Clear Anodized		Black	
Dark Bronze		Medium Gold	
Medium Bronze		Champagne	

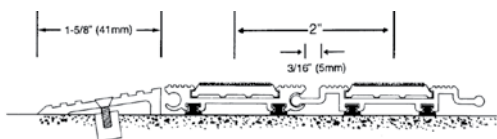
FRAME OPTIONS: 700 & 800 Series



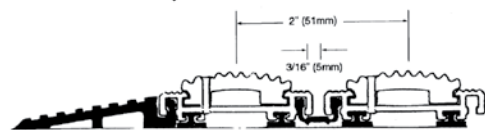
JL-R: Recessed frame that allows the mat to rest flush with the floor surface. 1-3/8" (34.9mm) deep by 1/2" (12.7 mm) profile. Available in any color frame.



JL-TR: Recessed angle frame for butting up to tile or carpet. 7/16" (11.1mm) deep by 1/8" (3.2mm) profile. Available in any color frame.



JL-SA: Surface mounted aluminum frame for permanent installation. 3/8" (9.5mm) deep by 1-5/8" (41.3 mm) wide profile. Serrated aluminum alloy extrusions. Available in any color frame.



JL-SV: Surface mounted vinyl frame for a moveable installation. 3/8" (9.5 mm) deep by 1-5/8" (41.3 mm) wide profile. Available in Black Serrated flexible black plastic only.



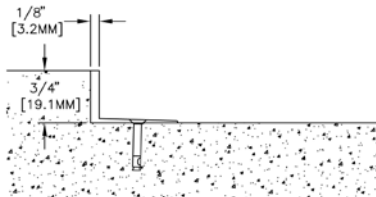
LOW PROFILE ALUMINUM ROLL-UP GRATING FOR HEAVY WHEEL LOADS

- 3/4" Deep Profile—Ideal for Building Renovations
- Designed for up to 1500 lb. Wheel Loads—Ideal for Heavy Cart Traffic
- LEED 44 Rating On All Models Except 609
- Continuous Bottom Cushions Reduce Noise

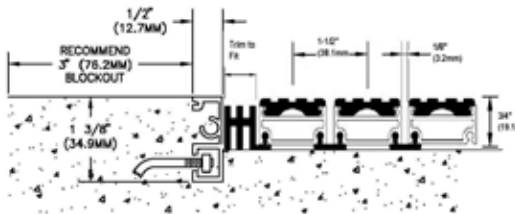
TREAD INSERT OPTIONS:

- JL-600:** Carpet
- JL-601:** Vinyl
- JL-604:** Vinyl-abrasive
- JL-605:** Tuff Tread
- JL-607:** Premium Carpet
- JL-609:** Buffed Rubber Inserts
- Frame:** JL FA Frame Only
- LEED:** 12.66

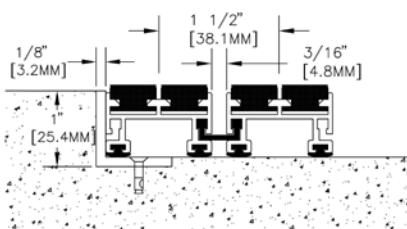
FRAME OPTIONS: 600 Series



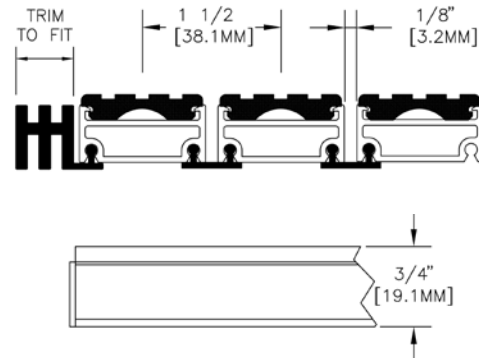
JL-AA: Recessed angle frame. 3/4" (25.4mm) deep by 1/8" (3.2mm) wide aluminum extrusion. Available in any color frame.



JL-A: Level bed frame allows grate to rest directly on the recessed concrete. 1-3/8" (34.9 mm) deep by 1/2" (12.7mm) profile. Available in any color frame.



JL-FA: Recessed angle frame for the Model JL609 Buffed Rubber Tread Only. Aluminum frame 1" (25.4mm) deep by 1/8" (3.2mm) wide aluminum alloy extrusion. Available in any color frame.



- #1 Specify Tread Option
- #2 Specify Tread Color from page 8
- #3 Specify Rail Finish Color from Rail & Frame Finish Colors
- #4 Specify Frame Style from 600 Series Frame Options Chart
- #5 Find LEED Rating on page 7

RAIL AND FRAME FINISH COLORS

Mill		Light Bronze	
Clear Anodized		Black	
Dark Bronze		Medium Gold	
Medium Bronze		Champagne	



STAINLESS STEEL GRATING FOR HIGH TRAFFIC ENTRYWAYS

- Resistance-welded .093" Stainless Steel Wire Construction
- .14" (3.6mm) Rail Spacing Allows Water, Snow and Dirt to Fall Through
- #4 Satin Stainless Steel Finish
- Support Bars spaced 1" apart for the Greatest Load Capacity
- 1500 or 2000 lb. Rolling Load
- Designed for Very Heavy Foot or Light Vehicle Traffic
- Anchored by Hidden Lockdowns
- EQ Credit 5: for Indoor Chemical & Pollutant Source Control



TREAD INSERT OPTIONS:

JL-503: 7/16" deep grate

Surface-Mounted Installations: JL38SM frame

Recessed Installations: JL38SS

JL-508: 5/8" deep grate

Recessed Installations: JL-58SS

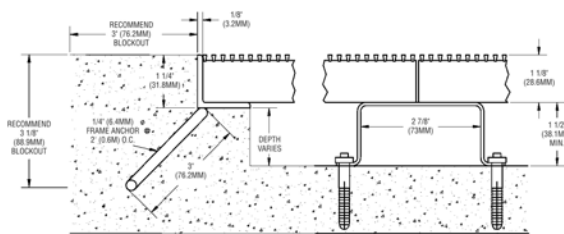
JL-509: 9/8" deep grate

Recessed Installations: JL-98SS

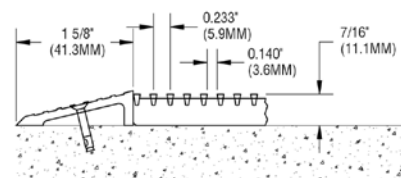
Stainless Steel Deep Pit: JL 98DPSS



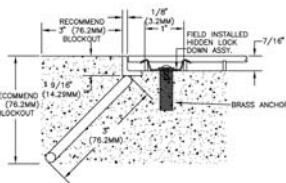
FRAME OPTIONS: 500 Series



Deep Pit Frame: JL98DPSS

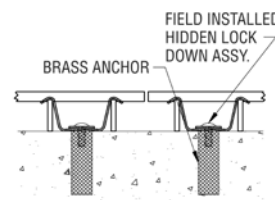


Surface-Mounted Permanent Installation Frame: JL38SM
15/32" (11.9 mm) deep by 1-5/8" (41.3 mm) wide profile. Serrated aluminum extrusion angle.



Stainless Steel Recessed Frame:

JL38SS—7/16" (11.1 mm) deep
JL58SS—5/8" (15.99 mm) deep
JL98SS—9/8" (28.6 mm) deep
Anchored by Hidden Lockdowns



Intermediate Anchoring System
Required for all Models.



LEED™ RELATED DATA

The Leadership in Energy and Environmental Design (LEED) Green Building Rating System™ is the nationally accepted benchmark for the design, construction and operation of high-performance green buildings. LEED gives building owners and operators the tools they need to have an immediate and measurable impact on their buildings' performance. LEED promotes a whole-building approach to sustainability by recognizing performance in five key areas of human and environmental health: sustainable site development, water savings, energy efficiency, materials selection and indoor environmental quality.

LEED: 59

MR Credits 4.1, 4.2: Recycled Content

This model contains a minimum of 59% pre-consumer recycled content. Note that most aluminum has an actual post-consumer recycled content that is much higher, but at this time it is not possible to guarantee post-consumer recycled content for a specific batch or project.

LEED: 50

MR Credits 4.1, 4.2: Recycled Content

This model contains a minimum of 50% pre-consumer recycled content. Note that most aluminum has an actual post-consumer recycled content that is much higher, but at this time it is not possible to guarantee post-consumer recycled content for a specific batch or project.

LEED: 49

MR Credits 4.1, 4.2: Recycled Content

This model contains a minimum of 49% pre-consumer recycled content. Note that most aluminum has an actual post-consumer recycled content that is much higher, but at this time it is not possible to guarantee post-consumer recycled content for a specific batch or project.

LEED: 46

MR Credits 4.1, 4.2: Recycled Content

This model contains a minimum of 46% pre-consumer recycled content. Note that most aluminum has an actual post-consumer recycled content that is much higher, but at this time it is not possible to guarantee post-consumer recycled content for a specific batch or project.

LEED: 44

MR Credits 4.1, 4.2: Recycled Content

This model contains a minimum of 44% pre-consumer recycled content. Note that most aluminum has an actual post-consumer recycled content that is much higher, but at this time it is not possible to guarantee post-consumer recycled content for a specific batch or project.

LEED: 41.47

MR Credits 4.1, 4.2: Recycled Content

This model contains a minimum of 41.47% pre-consumer recycled content. Note that most aluminum has an actual post-consumer recycled content that is much higher, but at this time it is not possible to guarantee post-consumer recycled content for a specific batch or project.

LEED: 37

MR Credits 4.1, 4.2: Recycled Content

This model contains a minimum of 37% pre-consumer recycled content. Note that most aluminum has an actual post-consumer recycled content that is much higher, but at this time it is not possible to guarantee post-consumer recycled content for a specific batch or project.

LEED: 15.61

MR Credits 4.1, 4.2: Recycled Content

This model contains a minimum of 15.61% pre-consumer recycled content. Note that most aluminum has an actual post-consumer recycled content that is much higher, but at this time it is not possible to guarantee post-consumer recycled content for a specific batch or project.

LEED: 12.66

MR Credits 4.1, 4.2: Recycled Content

This model contains a minimum of 12.66% pre-consumer recycled content. Note that most aluminum has an actual post-consumer recycled content that is much higher, but at this time it is not possible to guarantee post-consumer recycled content for a specific batch or project.

LEED: 10

MR Credits 4.1, 4.2: Recycled Content

This model contains a minimum of 10% pre-consumer recycled content. Note that most aluminum has an actual post-consumer recycled content that is much higher, but at this time it is not possible to guarantee post-consumer recycled content for a specific batch or project.

EQ CREDIT 5: Indoor Chemical and Pollutant Source Control

This product is intended for permanent installation. To meet this credit's requirements for an entryway system, size product at least six feet in the traffic direction and maintain the product properly.

WARRANTY:

JL Industries warrants all Floor Gratings, Mats and Frames of the 600, 700, 800 or 900 Series for a period of two years from date of shipment against defects in material or workmanship. The 500 Series products constructed of stainless steel are warranted for five years from date of shipment. In addition to the above, the following Tread Inserts carry a 5 year warranty against defects in material or workmanship, but not wear; Tuff Tread; Premium Carpet, Buffed Rubber. The liability of JL is strictly limited to the repair or replacement of units that, in our opinion, were properly installed and subsequently found defective. No claims for consequential damages of any nature will be allowed. This warranty is in lieu of all other warranties, expressed or implied.

COLOR OPTIONS

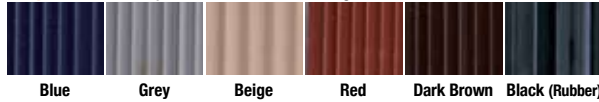


TREAD INSERT STYLES & COLORS

Carpet: 100% nylon fiber, fusion bonded to backing and mechanically secured to tread rails for maximum durability. Meets NFPA 258 and 253 standards, FTM Standard 372 and is Class 2 Fire-rated.



Vinyl: Convex vinyl inserts have full-length serrations for traction. Black is a vulcanized rubber insert.



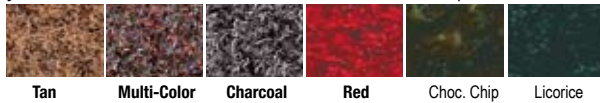
Abrasive-Coated Aluminum Surface: Aluminum treads coated with mineral particles embedded in epoxy coating for the greatest wear and slip resistance.



Abrasive-Coated Vinyl: Aluminum treads coated with mineral particles embedded in epoxy coating for the greatest wear and traction.



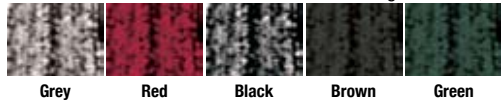
Tuff Tread: Broadloom commercial textile with crimped, Solution-Dyed 600 denier polypropylene fibers tufted into a woven double backing and mechanically secured to tread rails. Greatest resistance to traffic pattern wear.



Premium Carpet Inserts: Highly-absorbent, tufted 100% nylon with a polyester nonwoven primary backing and secondary backing. Meets NFPA 258 and 253 standards, FTM Standard 372, and is Class 1 Fire-rated.



Buffed Rubber Inserts: Two buffed-rubber treads per rail and flexible low-density polyethylene hinge retained in a "captive" aluminum tread port; drain holes allow debris and moisture to flow through the mat; continuous bottom cushions reduce noise.



MANUFACTURING/WAREHOUSING LOCATIONS



ACPG HEADQUARTERS
JL INDUSTRIES
4450 W. 78TH STREET CIRCLE, BLOOMINGTON, MN 55435
PHONE: 800-554-6077 FAX: 952-835-2218
E-MAIL: SALES@JLINDUSTRIES.COM
WEB SITE: WWW.JLINDUSTRIES.COM

ACPG CHICAGO
WAREHOUSE
WOOD DALE, ILLINOIS

ACPG EAST COAST
WAREHOUSE
LANCASTER, PENNSYLVANIA



ACPG WEST COAST
SAMSON PRODUCTS
6285 RANDOLPH STREET, COMMERCE, CA 90040
PHONE: 800-554-6077 FAX: 952-835-2218
E-MAIL: SALES@SAMSONPRODUCTS.COM
WEB SITE: WWW.SAMSONPRODUCTS.COM

ACPG SOUTH
WAREHOUSE
GRAND PRAIRIE, TEXAS

ACPG ATLANTA
WAREHOUSE
ATLANTA, GEORGIA



ACPG SOUTHEAST
THOMAS ENTERPRISES
5765 CORPORATION CIRCLE, FORT MYERS, FL 33905
PHONE: 800-780-7501 FAX: 239-693-7501
E-MAIL: SALES@THOMASE.COM
WEB SITE: WWW.THOMASE.COM

The Activar Construction Products Group (ACPG) consists of 5 affiliated companies that serve the commercial construction industry. Our multiple product lines are a single source for architects and distributors. Air Louvers manufactures products for the openings market with door lites, louvers and rated-glass. Hiawatha is known for its quality architectural door hardware and frameless shower door products. JL Industries is an industry leader in fire protection, providing fire extinguishers, AEDs and cabinets, access panels, roof opening products and entrance flooring systems. Samson Products manufactures many of the products sold under the JL label and distributes JL products on the West Coast. Thomas Enterprises is our Southeast Warehouse distributor for JL products and has a state-of-the-art aluminum fabrication facility for fire extinguisher cabinets sold under the Thomas and JL labels.



JL INDUSTRIES

FIRE PROTECTION



Division 10 44 00

**Fire Extinguisher Cabinets
Security Fire Extinguisher
Cabinets**

Fire Extinguishers

Fire Blankets and Cabinets

Fire Extinguisher Accessories

Division 21 12 00

Hose Racks

Valve and Hose Cabinets

Hoses & Nozzles



ACTIVAR
INC.

www.activar.com

Construction Products Group



JL INDUSTRIES



AIR LOUVERS



SAMSON PRODUCTS



THOMAS ENTERPRISES



HIAWATHA

INTRODUCTION

ABOUT JL INDUSTRIES

Choices and Quality: We offer you the convenience of the full range of products from JL Industries, Samson Products and Thomas Enterprises complete in one catalog.

Here you can find the largest selection of fire extinguisher cabinets in the industry, including steel, stainless steel, aluminum, brass and bronze with a host of optional features. JL's reputation for quality products has made us an industry standard for over 60 years.

Fast Delivery: Take advantage of our Quick-Ship Program for the most popular cabinet models. We ship direct to you from eight locations in North America. See the back page for locations.

LEED Credits: Many of our products can contribute to your LEED project. Contact us or visit our website for more information.

Versatile Manufacturing Capabilities: With the combined resources of our three manufacturing facilities—each with its own specialty—you can create your own distinctive cabinet with the size and features you need, for the look you want. Just Ask Us!

Our involvement with organizations such as the National Fire Prevention Association (NFPA), the Door and Hardware Institute (DHI), the Construction Specifiers Institute (CSI), the Green Building Council and the National Association of Fire Equipment Distributors (NAFED) enables us to remain at the forefront of industry requirements with products to keep you in compliance with current building codes.

Website Resources: Find all of the documentation you need and the most current product information on our website at WWW.ACTIVARCPG.COM.

WARRANTY

All fire protection products carry a one-year warranty after date of shipment against defects in materials and workmanship. We will replace or repair any product found defective within this period at our discretion. No other warranty express or implied is valid. Fire extinguishers may carry a longer warranty.

AMERICANS WITH DISABILITIES ACT (ADA) GUIDELINES

Look for Model Numbers in Blue to find cabinets that comply with ADAC.

- Cabinets with the number "2" as the fourth character of the model number. These models project only 4" from the wall and include a flush pull.
- All trimless and flat trim models with any handle.
- All 1 1/4", 1 1/2", 2 1/2" or 3" trim models with any handle—excluding bubble cabinets.



Projection Requirements

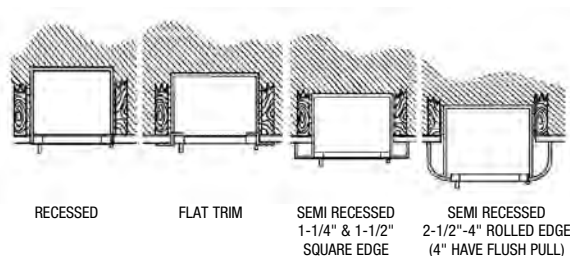
The federal regulations for ADA Standards for Accessible Design Section: Protruding Objects Section (28 CFR 36, 4.4.1) specify that "objects projecting from walls with their leading edges between 27" and 80" (685 mm and 2030 mm) above the finished floor (AFF) shall protrude no more than 4" (100mm) into walks, halls, corridors, passageways, or aisles. Please note that a surface-mounted cabinet installed in such a way that any part of it falls between 27" and 80" AFF would not meet ADA requirements.

These are national standards which are subject to change by local authorities having jurisdiction. ADA requirements, in particular, are constantly evolving through ongoing legislative and judicial actions. For more information: <http://www.ada.gov>

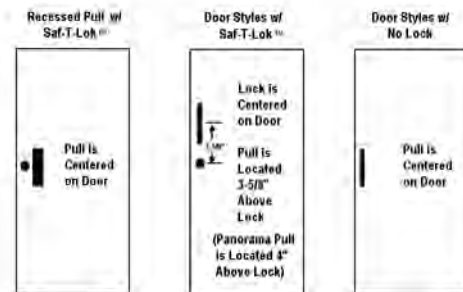
Mounting Heights

The NFPA and ADA have created guidelines for the mounting of cabinets and extinguishers to provide safety and/or easy access to the equipment. ADA guidelines specify reach ranges for building occupants who require access to equipment such as fire extinguishers and other fire safety devices. According to the ADA Standards (28 CFR 36, 4.2.5 and 4.2.6 neither the extinguisher handle nor the cabinet handle can be mounted higher than 48" AFF for applications which allow for only a forward approach in a wheelchair to the object; and, no higher than 54" AFF, for those applications which allow for a parallel approach. It should be noted that these restrictions also fall within the current National Fire Protection Association (NFPA) guidelines, which call for a maximum mounting height of 60" AFF to the top of the extinguisher.

ADA COMPLIANT CABINET STYLES



ADA MOUNTING HEIGHTS





SAF-T-LOK™ OPTION

Unique new design for cabinets with cylinder locks

Theft-deterrent feature with cylinder lock

In the panic of a fire emergency, the breaking of the glass in a fire extinguisher cabinet door can be dangerous. It creates the possibility of injury to people and serious liability to the building owner.

Cabinets with a **SAF-T-LOK™** lock appear to be locked and in fact are, but the door can be opened with a sharp pull which breaks the replaceable plastic cam. This deters theft and vandalism which occur from unlocked cabinets and allows quick access to the extinguisher.

The **SAF-T-LOK™** cam lock is centered top to bottom and can be installed on most door styles with the glazing option you select. Recessed pulls are centered top to bottom, and protruding pulls are installed 3-5/8" inches higher when a **SAF-T-LOK™** is installed in your cabinet.



1038Q43



FIRE-FX™ OPTION

Fire Rated Cabinets

AN INDUSTRY FIRST!

JL Industries was the first company in the industry to design and patent fire-rated option for cabinets. We call this the **FIRE-FX™** Option for cabinets that are built to meet building code specifications for fire-rated wall situations. Warnock Hersey has certified and listed JL's **FIRE-FX™** Option for 1-hour and 2-hour combustible and non-combustible wall systems. All JL Industries fire equipment cabinets with **FIRE-FX™** Option are shown in red throughout our catalog.

FIRE-FX™ OPTION

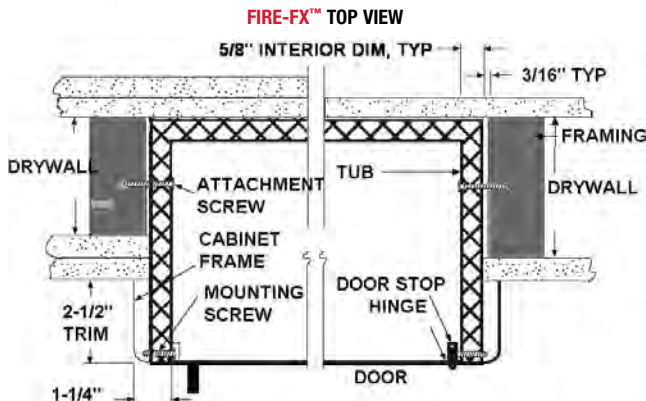
- Eliminates the Need to Line the Wall Opening with Fire-Rated Material.
- Retains the Integrity of the Fire Barrier.
- Conforms to ASTM-E814-83 and UBC-43-6
- WHI Test # 631-021201 & 631-021202

Most Recessed Cabinets in our Product Line are Available as Fire-Rated Cabinets. See Product Page in This Catalog for More Information.

To order or specify, add **FIRE-FX™** Option to the end of the seven-digit JL model number. For example, if you want an Ambassador 1017F10 with the **FIRE-FX™** Option, ask for the 1017F10FX.



WHI Test Number:
 • 631-021201
 • 631-021202



TYPICAL FIRE-RATED INSTALLATION



TABLE OF CONTENTS

STEEL

Ambassador.....	6-7
Classic.....	12
Clear Vu.....	9
Corner Vu.....	13
Crownline Valve/Hose.....	18-19
Decorline.....	13
Economyline.....	12
Embassy.....	10
Panorama.....	8
Royal Blanket.....	20
School.....	16
Security.....	16
SMB.....	9

STAINLESS STEEL

Clear Vu.....	9
Corner Vu.....	13
Cosmopolitan.....	6-7
Crownline Valve/Hose.....	18-19
Embassy.....	10
Panorama.....	8
Royal Blanket.....	20
School.....	16
Security.....	16

ALUMINUM

Academy.....	6-7
Canopy.....	15
Classic.....	12
Clear Vu.....	9
Corner Vu.....	13
Crownline Valve/Hose.....	18-19
Decorline.....	13
Economyline.....	12
Embassy.....	10
Panorama.....	8
RBC.....	15
RC.....	14
Royal Blanket.....	20
SM.....	14

ABS PLASTIC

ABS.....	12
----------	----

BRONZE

Cavalier.....	11
Clear Vu.....	9
Embassy.....	10

BRASS

Cavalier.....	11
Clear Vu.....	9
Embassy.....	10

EXTINGUISHERS.....4-5

FIRE HOSE EQUIPMENT.....17

ACCESSORIES.....20, 21

PROJECT GALLERY.....22

KEY TO CABINET NUMBERS.....23

OPTIONAL METAL FINISHES.....24

LOCATIONS.....24

FIRE EXTINGUISHERS

COSMIC EXTINGUISHERS: Multi-Purpose Chemical

General Data: These units contain specially fluidized and siliconized mono ammonium phosphate powder, which smothers and breaks the chain reaction on Class B fires, fuses and insulates Class A fires and is a non-conductor of electricity. Non-toxic.

Operation: Squeeze the lever, which opens the valve, allowing the chemical to be forced out. Upright squeeze grip operation approved to -65°F (-52°C).

Construction: Heavy-duty steel cylinder with rugged metal valve and siphon tube with replaceable molded valve stem seal, visual pressure gauge, pull pin and upright squeeze grip. Corrosion and impact-resistant powder coat finish.

CLASS A,B,C Fires



GALAXY EXTINGUISHERS: Regular Dry Chemical

General Data: These models contain a siliconized sodium bicarbonate base, the traditional dry chemical. Cleanup after use is generally easy, because the chemical does not normally bake to a hot metal surface. Non-toxic.

Operation: Squeeze the lever, which opens the valve, allowing the chemical to be forced out. Upright squeeze grip operation approved to -65°F (-52°C).

Construction: Heavy-duty steel cylinder with rugged metal valve and siphon tube with replaceable valve stem seal, visual pressure gauge pull pin and upright squeeze grip.

CLASS B,C Fires



SATURN EXTINGUISHERS: Class K Wet Chemical

General Data: These units are ideal for commercial restaurant applications as a portable supplement to pre-engineered suppression systems. A low "pH" potassium acetate solution is discharged in a fine mist that provides excellent range while preventing splashing and creating an effective saponification foam-type blanket necessary for suppressing liquid cooking media fires.

Operation: Squeeze the lever, which opens the valve, allowing the chemical to be forced out.

Construction: Stainless steel cylinder with protective nozzle tip orifice seal and non-metallic nozzle tip finger guard. Industry standard horn and nozzle design. Name plate shows only the class "K" symbol.

CLASS K Fires



MERCURY EXTINGUISHERS: Halotron®

General Data: This model contains the clean extinguishing agent Halotron® 1, which is EPA-approved, government-accepted and specified. This agent discharges as a liquid, then quickly evaporates, leaving no residue to clean up afterwards. U.S. FAA-approved for use in airports. NFPA-10 rating. Electrically non-conductive.

Operation: Squeeze the lever, which opens the valve, allowing the chemical to be forced out. Temperature range from -40°F to +120°F.

Construction: Drawn steel cylinder with steel siphon tubes, power cone discharge stream, upright squeeze grip visual pressure gauge and corrosion-resistant paint finish.

CLASS A,B,C Fires



SENTINEL EXTINGUISHERS: Carbon Dioxide

General Data: This extinguisher contains liquid carbon dioxide under pressure.

Operation: Squeeze the lever, which opens the valve, allowing the carbon dioxide to be forced out. The discharge, which changes into a gas and appears as a smothering cloud of white snow, is then directed to the fire through a funnel-shaped horn. Electrically non-conductive.

Construction: Lightweight, high-pressure, aluminum cylinder with O-ring seal and straight thread brass valve fits all sizes. The Sentinel is absolutely rust-free and up to 30% lighter than CO2 units with steel cylinders.

CLASS B,C Fires



272: Water Mist for Electrical

General Data: This non-toxic water mist extinguisher is ideal for Class A fires and where a potential Class C (electrical) hazard exists. Units shipped empty.

Operation: The unique misting nozzle provides safety from electrical shock, making this extinguisher ideal for use in telecommunications and cleanroom environments.

Construction: Non-magnetic cylinder and misting nozzle. For use in medical facilities.

Class A,C Fires



GRENADIER EXTINGUISHERS: Pressurized Water

General Data: The "water press" extinguisher contains water and compressed air. Units shipped empty.

Operation: Squeeze the lever, which opens the valve, allowing the water to be forced out. Upright squeeze grip operation.

Construction: Butt-welded 304-L stainless steel cylinder (eliminates all internal and external crevices). Rugged stainless steel discharge lever and fixed carry handle with visual pressure gauge, pull pin. Heavy-duty, brass, chrome-plated valve body with replaceable molded valve stem seal. UL labeled chemical engine hose.

CLASS A Fires



CLASS A FIRES - PAPER, WOOD, CLOTH, ETC., WHERE QUENCHING BY WATER OR INSULATING BY DRY CHEMICAL IS EFFECTIVE.



CLASS B FIRES - FLAMMABLE LIQUIDS WHERE SMOTHERING ACTION IS REQUIRED.



CLASS C FIRES - LIVE ELECTRICAL EQUIPMENT WHERE THE NON-CONDUCTIVITY OF EXTINGUISHANT IS VITAL.



CLASS K FIRES CALL J.L. INDUSTRIES FOR MORE INFORMATION.



495: Wheeled Multi-Purpose Chemical 50-lb Unit

General Data: Portable, large-capacity extinguisher units contain specially-fluidized and siliconized mono ammonium phosphate powder which smothers and breaks the chain reaction on Class B fires, fuses and insulates Class A fires and is a non-conductor of electricity. Non-toxic.

Operation: Squeeze the lever, which opens the valve, allowing the chemical to be forced out. Upright squeeze grip operation approved to -65°F (-52°C).

Construction: Heavy-duty steel cylinder with rugged metal valve and siphon tube with replaceable molded valve stem seal, visual pressure gauge, pull pin and upright squeeze grip. Corrosion and impact-resistant powder coat finish.

CLASS A,B,C Fires

496: Wheeled Dry Chemical 50-lb Unit

General Data: These models contain a siliconized sodium bicarbonate base, the traditional dry chemical. Cleanup after use is generally easy, because the chemical does not normally bake to a hot metal surface. Non-toxic.

Operation: Squeeze the lever, which opens the valve, allowing the chemical to be forced out. Upright squeeze grip operation approved to -65°F (-52°C).

Construction: Heavy-duty steel cylinder with rugged metal valve and siphon tube with replaceable valve stem seal, visual pressure gauge, pull pin and upright squeeze grip.

CLASS B,C Fires



MODELS 495 AND 496 WHEELED EXTINGUISHER
CONSTRUCTION: THE CARRIAGE DESIGN PROTECTS THE AGENT CYLINDER WHILE PROVIDING A PLATFORM TO TRANSPORT AND OPERATE THE UNITS. 25' FOOT HOSE INCLUDED. OPTIONS INCLUDE STATIONARY DESIGN AND TOW LOOP.

Note: Other types of wheeled fire extinguishers are available including carbon dioxide unit and nitrogen cylinder-operated units. Please contact JL Industries for further details.

FIRE EXTINGUISHER SIZES, CAPACITY, RATINGS IN IMPERIAL										
Qty	Model	Nominal Capacity	Shipping Weight	Cylinder Diameter	Overall Height	Overall Width	Shipping Volume	U/L Rating	Optional Mark Bracket	US Coast Guard Approved
	Grenadier-P	2-1/2 gal.	7-1/2 lbs.	7"	24-1/2"	9"	1.1 cu.ft.	2A	MB810	YES
	Cosmic 2-1/2E*	2-1/2 lbs.	5-1/2 lbs.	3"	14-3/4"	3-7/8"	.2 cu.ft.	1A-10BC	MB817C or MB817A*	YES
	Cosmic 5E	5 lbs.	9-1/4 lbs.	4-1/4"	14-5/8"	6"	.35 cu.ft.	3A-40BC	MB818C	YES
	Cosmic 6E	6 lbs.	12 lbs.	5"	16"	7"	.5 cu.ft.	3A-40BC	MB808A	YES
	Cosmic 10E	10 lbs.	18 lbs.	5"	20-1/2"	9"	.65 cu.ft.	4A-80BC	MB846C/A	YES
	Cosmic 20E	20 lbs.	39 lbs.	7"	24"	10"	1.0 cu.ft.	6A-120BC	MB810A or MB811C	YES
	Sentinel 5	5 lbs.	14 lbs.	5-1/4"	17-3/4"	8-1/4"	.65 cu.ft.	5BC	MB809C or MB809A	YES
	Sentinel 10	10 lbs.	28-1/4 lbs.	7"	24"	12"	1.3 cu.ft.	10BC	MB810C or MB810A	YES
	Sentinel 15	15 lbs.	37-3/4 lbs.	7"	30"	12"	1.0 cu.ft.	10BC	MB864A or MB810C	YES
	Sentinel 20	20 lbs.	50-3/4 lbs.	8"	30"	13"	2.1 cu.ft.	10BC	MB811C or MB811A	YES
	Galaxy 2-1/2*	2-1/2 lbs.	5-1/2 lbs.	3"	14-3/8"	4-1/4"	.2 cu.ft.	10BC	MB817C or MB817A*	YES
	Galaxy 5	5 lbs.	9 lbs.	4-1/4"	14-5/8"	5"	.35 cu.ft.	10BC	MB818A	YES
	Galaxy 5-1/2	5-1/2 lbs.	9-1/2 lbs.	4-1/4"	14-5/8"	6"	.4 cu.ft.	40BC	MB818C or MB818A	YES
	Galaxy 6	6 lbs.	13 lbs.	5"	16"	8-1/2"	.5 cu.ft.	40BC	MB808A	YES
	Galaxy 10	10 lbs.	18 lbs.	5"	20-1/2"	8-1/2"	.65 cu.ft.	40BC or 60BC	MB846C or MB846A	YES
	Galaxy 20	20 lbs.	38-1/2 lbs.	7"	24"	10"	1.0 cu.ft.	120BC	MB810C or MB810A	YES
	Mercury 2-1/2*	2-1/2 lbs	5-1/2 lbs	3-3/8"	13-3/8"	5-5/8"	.25 cu.ft.	2BC	MB817C or MB817A*	N/A
	Mercury 5	5 lbs	9-1/2 lbs	4-1/4"	16-3/8"	7-1/4"	.3 cu.ft.	5BC	MB818C or MB818A	YES
	Mercury 11	11 lbs	21-1/4 lbs	7"	17-1/2"	8-5/8"	1.0 cu.ft.	1A-10BC	MB810C or MB812A	YES
	Mercury 15-1/2	15-1/2 lbs	25-3/4 lbs	7"	17-1/2"	8-5/8"	1.0 cu.ft.	2A-10BC	MB810C or MB812A	YES
	Saturn 15	1.8 gal	25 lbs.	7"	19.5"	9"	.9 cu.ft.	class K	MB810C or MB810A	-
	Saturn 25	2.5 gal	35 lbs.	7"	24.5"	9"	1.1 cu.ft.	class K	MB810C or MB810A	-
	272	2-1/2 gal	8 lbs.	7"	27.5"	11"	1.3 cu ft.	2AC	14315	--
	495	50 lbs	193 lbs	--	47"	26-1/2"	--	20A-160BC	--	--
	496	50 lbs.	193 lbs.	--	47"	26-1/2"	--	160BC	--	--

Dimensions in Inches

* INDICATES MARK BRACKET STANDARD. J HOOK WALL BRACKET STANDARD WITH ALL OTHER EXTINGUISHERS.

NOTE: JL EXTINGUISHERS ARE SHIPPED FULLY CHARGED WITH THE EXCEPTION OF THE GRENADE P & 272. NFPA REGULATIONS ALSO REQUIRE EXTINGUISHERS TO BE INSPECTED WHEN INITIALLY PLACED IN SERVICE AND ALL LOCAL FIRE CODE AND TAGGING REQUIREMENTS MUST BE ADHERED TO. ALL FIRE EXTINGUISHER SIZES ARE NOMINAL. CONTACT CUSTOMER SERVICE FOR MORE INFORMATION ABOUT ORDERING TAGGED EXTINGUISHERS IN YOUR AREA.



CLASS A FIRES - PAPER, WOOD, CLOTH, ETC., WHERE QUENCHING BY WATER OR INSULATING BY DRY CHEMICAL IS EFFECTIVE.



CLASS B FIRES - FLAMMABLE LIQUIDS WHERE SMOTHERING ACTION IS REQUIRED.



CLASS C FIRES - LIVE ELECTRICAL EQUIPMENT WHERE THE NON-CONDUCTIVITY OF EXTINGUISHER IS VITAL.



CLASS K FIRES CALL JL INDUSTRIES FOR MORE INFORMATION.

FIRE EXTINGUISHER CABINETS

AMBASSADOR SERIES: Steel Trim and Door

Door and Trim Construction: Cold rolled steel with white powder-coat finish standard. Flush cabinet doors with a 5/8" door stop are attached by a continuous hinge and equipped with zinc-plated handle and roller catch.

Trim Style and Depth: Recessed - 3/8" flat trim or trimless. Semi-Recessed - 1 1/4", 1 1/2" Square Edge or 2 1/2", 3", 4" (recessed pull), 4 1/2" Rolled Edge. Surface-mount has a square edge or optional rolled edge upon request. 1 3/4" face trim on frame and door.

Tub: Constructed of cold rolled steel with white powder-coat finish standard.

Options at Additional Cost: Color door and trim or tub. Rolled Edge Surface Mount Cabinet. See page 24. Custom colors.

Fire-Rated Option Available: Yes



AMBASSADOR
1017F10 (BLK OPTION)



AMBASSADOR
1013F10

ACADEMY SERIES: Aluminum Trim and Door

Door and Trim Construction: No. 180 clear anodized aluminum. Flush cabinet doors with a 5/8" door stop are attached by a continuous hinge and equipped with zinc-plated handle and roller catch.

Trim Style and Depth: Recessed - 3/8" flat trim. Semi-Recessed - 1 1/4", 1 1/2" Square Edge or 2 1/2", 3", 4" (recessed pull), 4 1/2" Rolled Edge. Surface-mount has a square edge. 1 3/4" face trim on frame and door.

Tub: Constructed of cold rolled steel with white powder-coat finish standard. Surface-mounted models have clear anodized aluminum tubs.

Options at Additional Cost: Light, medium or dark bronze anodized finish. See page 24. Aluminum tub for non-rated use (#180 clear anodized).

Fire-Rated Option Available: Yes



ACADEMY
1027V10 (DK BRONZE OPTION)



ACADEMY
C1027V10

COSMOPOLITAN SERIES: Stainless Steel Trim and Door

Door and Trim Construction: No. 4 Stainless Steel Trim and Door. Flush cabinet doors with a 5/8" door stop are attached by a continuous hinge and equipped with zinc-plated handle and roller catch.

Trim Style and Depth: Recessed - 3/8" flat trim. Semi-Recessed - 1 1/4", 1 1/2" Square Edge or 2 1/2", 3", 4" (recessed pull), 4 1/2" Rolled Edge. Surface-mount has a square edge or optional rolled edge upon request. 1 3/4" face trim on frame and door.

Tub: Constructed of cold rolled steel with white powder-coat finish standard. Surface-mounted models have No 4 stainless tubs.

Options at Additional Cost: Custom stainless finishes - #6 satin, #7 polished, #8 mirror. Stainless tub with #4 finish. Rolled Edge Surface Mount Cabinet.

Fire-Rated Option Available: Yes



COSMOPOLITAN
1036F16 (POLISHED #7)



COSMOPOLITAN
1035S21

CABINET OPTIONS FOR ALL MODELS: AMBASSADOR, ACADEMY & COSMOPOLITAN

Door Styles w/pull

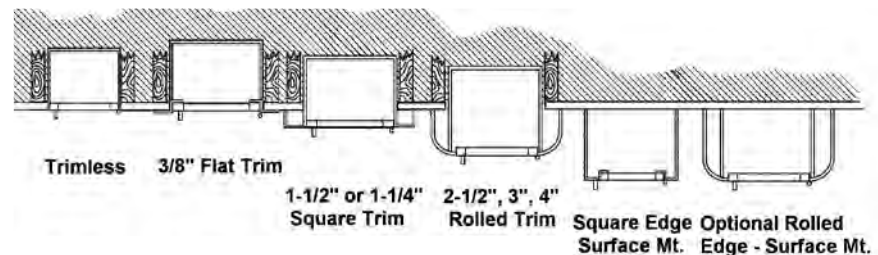
- F Full Glazing
- G Full Glazing & SAF-T-LOK™
- D Horizontal Duo Panel
- E Horizontal Duo Panel & SAF-T-LOK™
- S21 Solid
- L22 Solid with SAF-T-LOK™
- L24 Solid with Cylinder Lock & No Handle
- B10 Solid with Glass Insert & SAF-T-LOK™
- V Vertical Duo
- W Vertical Duo & SAF-T-LOK™

Door Glazing

- 10 Clear Acrylic
- 13 Clear Wire Glass
- 15 Bronze Acrylic
- 16 Gray Acrylic
- 17 Clear Tempered Glass
- 18 Laminated Safety Glass

Options at Additional Cost

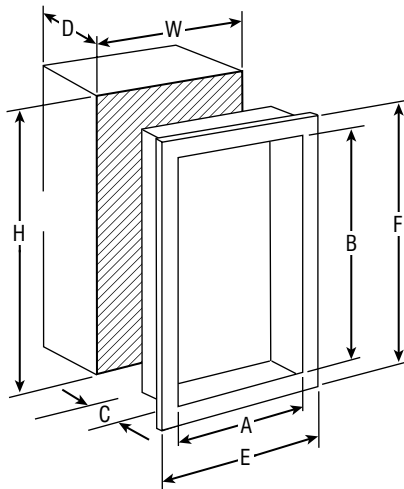
- Vertical or Horizontal Lettering - See Page 21
- Futura Embossed "Fire" Handle in Mill, White or Red
- ADA Flush Pull or Chrome Turn Handle
- Wall Signs & Alarms - See Page 20
- Red or Black Painted Steel Tub
- Engraved Metal Door or Etched Glass



FIRE EXTINGUISHER CABINETS



AMBASSADOR, ACADEMY, COSMOPOLITAN: Door Styles



SELECTION CHART FOR AMBASSADOR, ACADEMY, COSMOPOLITAN SERIES

Trim and Door Material and Series #			Tub I.D.			Frame O.D.		Wall Opening: Non-rated			Wall Opening: FX Option			Accommodates Following Extinguishers	
Steel	Aluminum	Stainless Steel	Trim Style	A	B	C	E	F	W	H	D	W	H		D
AMBASSADOR	ACADEMY	COSMOPOLITAN		Width	Height	Depth									
8114	--	--	Trimless	9	18	5 1/2	9 1/4	18 1/4	9 1/2	18 1/2	5 3/4	--	--	--	Cosmic 2 1/2E, 5E, 5X
8115	8125	8135	Flat Trim	9	18	5 1/2	12 3/8	21 3/8	10	19	5 1/2	11	20 1/8	6 3/8	Galaxy 2 1/2, 5, 5 1/2
8116	8126	8136	1 1/2" Square	9	18	5 1/2	12 3/8	21 3/8	10	19	4	11	20 1/8	4 7/8	Mercury 2 1/2, 5
8117	8127	8137	2 1/2" Rolled	9	18	5 1/2	12 3/8	21 3/8	10	19	3 1/8*	11	20 1/8	4*	Mercury 2 1/2, 5
8113	8123	8133	Surf. Mtd.	12 3/16	21 3/16	6	12 3/8	21 3/8	--	--	--	--	--	--	
1710	1720	1730	2 1/4" Square	10 1/2	24	5	13 7/8	27 3/8	11 1/2	25	2 3/4	12 1/2	26 1/8	3 5/8	Cosmic 2 1/2E, 5E, 5X
1815	1825	1835	Flat Trim	10 1/2	24	5 1/2	13 7/8	27 3/8	11 1/2	25	5 1/2	12 1/2	26 1/8	6 3/8	Galaxy 2 1/2, 5, 5 1/2
1816	1826	1836	1 1/2" Square	10 1/2	24	5 1/2	13 7/8	27 3/8	11 1/2	25	4	12 1/2	26 1/8	4 7/8	Mercury 2 1/2, 5
1817	1827	1837	3" Rolled	10 1/2	24	5 1/2	13 7/8	27 3/8	11 1/2	25	2 5/8	12 1/2	26 1/8	3 1/2	Mercury 2 1/2, 5
1812	1822	1832	4" Rolled	10 1/2	24	5 1/2	13 7/8	27 3/8	11 1/2	25	1 5/8*	12 1/2	26 1/8	2 1/2*	Mercury 2 1/2, 5
1818	1828	1838	4 1/2" Rolled	10 1/2	24	5 1/2	13 7/8	27 3/8	11 1/2	25	1 1/8*	12 1/2	26 1/8	2*	
1014	--	--	Trimless	10 1/2	24	6	10 3/4	24 1/4	11	24 1/2	6 1/4	--	--	--	Cosmic 2 1/2E, 5E, 5X, 6E, 10E
1015	1025	1035	Flat Trim	10 1/2	24	6	13 7/8	27 3/8	11 1/2	25	6	12 1/2	26 1/8	6 7/8	Galaxy 2 1/2, 5, 5 1/2, 6, 10
1016	1026	1036	1 1/2" Square	10 1/2	24	6	13 7/8	27 3/8	11 1/2	25	4 5/8	12 1/2	26 1/8	5 3/8	Sentinel 5
1017	1027	1037	3" Rolled	10 1/2	24	6	13 7/8	27 3/8	11 1/2	25	3 1/8	12 1/2	26 1/8	4	Mercury 2
1012	1022	1032	4" Rolled	10 1/2	24	6	13 7/8	27 3/8	11 1/2	25	2 1/8*	12 1/2	26 1/8	3*	Mercury 2 1/2, 5
1018	1028	1038	4 1/2" Rolled	10 1/2	24	6	13 7/8	27 3/8	11 1/2	25	1 5/8*	12 1/2	26 1/8	2 1/2*	
1013	1023	1033	Surf. Mtd.	13 11/16	27 3/16	6 1/2	13 7/8	27 3/8	--	--	--	--	--	--	
2014	--	--	Trimless	12	27	7 3/4	12 1/4	27 1/4	12 1/2	27 1/2	8	--	--	--	
2015	2025	2035	Flat Trim	12	27	7 3/4	15 3/8	30 3/8	13	28	7 7/8	14	29 1/8	8 1/2	Any Cosmic, Any Galaxy
2016	2026	2036	1 1/4" Square	12	27	7 3/4	15 3/8	30 3/8	13	28	6 3/4	14	29 1/8	7 3/8	Grenadier P**, Sentinel 5, 10
2017	2027	2037	2 1/2" Rolled	12	27	7 3/4	15 3/8	30 3/8	13	28	5 1/2*	14	29 1/8	6 3/8*	Any Mercury
2012	2022	2032	4" Rolled	12	27	7 3/4	15 3/8	30 3/8	13	28	4*	14	29 1/8	4 5/8*	Any Saturn, 272
2018	2028	2038	4 1/2" Rolled	12	27	7 3/4	15 3/8	30 3/8	13	28	3 1/2*	14	29 1/8	4 1/8*	
2013	2023	2033	Surf. Mtd.	15 3/16	30 3/16	8 1/4	15 3/8	30 3/8	--	--	--	--	--	--	
3015	3025	3035	Flat Trim	16	32	7 3/4	19 3/8	35 3/8	17	33	7 7/8	18	34 1/8	8 1/2	Any Cosmic, Any Galaxy
3016	3026	3036	1 1/4" Square	16	32	7 3/4	19 3/8	35 3/8	17	33	6 3/4	18	34 1/8	7 3/8	Grenadier P**, Sentinel 5, 10, 15
3017	3027	3037	2 1/2" Rolled	16	32	7 3/4	19 3/8	35 3/8	17	33	5 1/2*	18	34 1/8	6 3/8*	Any Mercury
3012	3022	3032	4" Rolled	16	32	7 3/4	19 3/8	35 3/8	17	33	4*	18	34 1/8	4 5/8*	Any Saturn, 272
3018	3028	3038	4 1/2" Rolled	16	32	7 3/4	19 3/8	35 3/8	17	33	3 1/2*	18	34 1/8	4 1/8*	
3013	3023	3033	Surf. Mtd.	19 3/16	35 3/16	8 1/4	19 3/8	35 3/8	--	--	--	--	--	--	
4015	4025	4035	Flat Trim	20	27	7 3/4	23 3/8	30 3/8	21	28	7 7/8	22	29 1/8	8 1/2	Two each of:
4016	4026	4036	1 1/4" Square	20	27	7 3/4	23 3/8	30 3/8	21	28	6 3/4	22	29 1/8	7 3/8	Any Cosmic, Any Galaxy
4017	4027	4037	2 1/2" Rolled	20	27	7 3/4	23 3/8	30 3/8	21	28	5 1/2*	22	29 1/8	6 3/8*	Grenadier P**, Sentinel 5, 10, 15
4012	4022	4032	4" Rolled	20	27	7 3/4	23 3/8	30 3/8	21	28	4*	22	29 1/8	4 5/8*	Any Mercury
4018	4028	4038	4 1/2" Rolled	20	27	7 3/4	23 3/8	30 3/8	21	28	3 1/2*	22	29 1/8	4 1/8*	Any Saturn, 272
4013	4023	4033	Surf. Mtd.	23 3/16	30 3/16	8 1/4	23 3/8	30 3/8	--	--	--	--	--	--	

Dimensions in Inches

*ADD 5/8" FOR CABINETS WITH ALUMINUM FRAMES.

**WHEN USING GRENADIER P WITH FIRE-FX™ OPTION CABINET, THE EXTINGUISHER MUST BE MOUNTED ON THE BACK OF THE CABINET TUB.

FIRE EXTINGUISHER CABINETS

PANORAMA SERIES: Frameless Acrylic Door

Door and Trim Construction: The Panorama features a frameless acrylic door of clear or opaque textured acrylic. The "stippled" texture of the opaque doors and exclusive aluminum backing protect the lettering, which is available in 3 colors and configurations. Clear doors also available. Flush cabinet doors are attached by a continuous hinge and equipped with zinc-plated handle and roller catch. Trim is cold rolled steel with white powder-coat, #180 clear anodized aluminum, or #4 stainless steel.

Trim Style and Depth: Recessed - 3/8" flat trim or trimless. Semi-Recessed - 1 1/4", 1 1/2" Square Edge or 2 1/2", 3", 4" (recessed pull), 4 1/2" Rolled Edge. Surface-mount has a square edge or optional rolled edge for steel or stainless steel upon request. 1 3/4" face trim on frame. See page 6.

Tub: Constructed of cold rolled steel with white powder-coat finish standard.

Fire-Rated Option Available: Yes

Door Styles w/pull

C70 Clear 3/16" Unlettered Smooth Acrylic

C71 Clear 3/16" Unlettered Smooth Acrylic with SAF-T-LOK™

P Identity: 3/16" Textured Obscure Acrylic with Lettering

Q Identity: 3/16" Textured Obscure Acrylic with Lettering & SAF-T-LOK™

Door Glazing

40 V, Black Bkgd, White Lettering

41 V, Red Bkgd, White Lettering

42 V, White Bkgd, Black Lettering

43 V, White Bkgd, Red Lettering

45 H, Black Bkgd, White Lettering

46 H, Red Bkgd, White Lettering

47 H, White Bkgd, Black Lettering

48 H, White Bkgd, Red Lettering

50 Ascend, Black Bkgd, White Lettering

51 Ascend, Red Bkgd, White Lettering

52 Ascend, White Bkgd, Black Lettering

53 Ascend, White Bkgd, Red Lettering



PANORAMA 1036C70 W/COSMIC 10E



PANORAMA 1012P48 ADAC OPTION

Options at Additional Cost

See page 6

SELECTION CHART FOR PANORAMA SERIES

Trim and Door Material and Series #				Tub I.D.			Frame O.D.		Wall Opening: Non-rated			Wall Opening: FX Option			Accommodates Following Extinguishers
Steel	Aluminum	Stainless Steel	Trim Style	A	B	C	E	F	W	H	D	W	H	D	
8114	--	--	Trimless	9	18	5 1/2	9 1/4	18 1/4	9 1/2	18 1/2	5 3/4	--	--	--	Cosmic 2 1/2E, 5E, 5X
8115	8125	8135	Flat Trim	9	18	5 1/2	12 3/8	21 3/8	10	19	5 1/2	11	20 1/8	6 3/8	Galaxy 2 1/2, 5, 5 1/2
8116	8126	8136	1 1/2" Square	9	18	5 1/2	12 3/8	21 3/8	10	19	4	11	20 1/8	4 7/8	Mercury 2 1/2, 5
8117	8127	8137	2 1/2" Rolled	9	18	5 1/2	12 3/8	21 3/8	10	19	3 1/8*	11	20 1/8	4*	
8113	8123	8133	Surf. Mtd.	12 3/16	21 3/16	6	12 3/8	21 3/8	--	--	--	--	--	--	
1815	1825	1835	Flat Trim	10 1/2	24	5 1/2	13 7/8	27 3/8	11 1/2	25	5 1/2	12 1/2	26 1/8	6 3/8	Cosmic 2 1/2E, 5E, 5X
1816	1826	1836	1 1/2" Square	10 1/2	24	5 1/2	13 7/8	27 3/8	11 1/2	25	4	12 1/2	26 1/8	4 7/8	Galaxy 2 1/2, 5, 5 1/2
1817	1827	1837	3" Rolled	10 1/2	24	5 1/2	13 7/8	27 3/8	11 1/2	25	2 5/8	12 1/2	26 1/8	3 1/2	Mercury 2 1/2, 5
1812	1822	1832	4" Rolled	10 1/2	24	5 1/2	13 7/8	27 3/8	11 1/2	25	1 5/8*	12 1/2	26 1/8	2 1/2*	
1818	1828	1838	4 1/2" Rolled	10 1/2	24	5 1/2	13 7/8	27 3/8	11 1/2	25	1 1/8*	12 1/2	26 1/8	2*	
1014	--	--	Trimless	10 1/2	24	6	10 3/4	24 1/4	11	24 1/2	6 1/4	--	--	--	
1015	1025	1035	Flat Trim	10 1/2	24	6	13 7/8	27 3/8	11 1/2	25	6	12 1/2	26 1/8	6 7/8	Cosmic 2 1/2E, 5E, 5X, 6E, 10E
1016	1026	1036	1 1/2" Square	10 1/2	24	6	13 7/8	27 3/8	11 1/2	25	4 5/8	12 1/2	26 1/8	5 3/8	Galaxy 2 1/2, 5, 5 1/2, 6, 10
1017	1027	1037	3" Rolled	10 1/2	24	6	13 7/8	27 3/8	11 1/2	25	3 1/8	12 1/2	26 1/8	4	Sentinel 5
1012	1022	1032	4" Rolled	10 1/2	24	6	13 7/8	27 3/8	11 1/2	25	2 1/8*	12 1/2	26 1/8	3*	Mercury 2 1/2, 5
1018	1028	1038	4 1/2" Rolled	10 1/2	24	6	13 7/8	27 3/8	11 1/2	25	1 5/8*	12 1/2	26 1/8	2 1/2*	
1013	1023	1033	Surf. Mtd.	13 11/16	27 3/16	6 1/2	13 7/8	27 3/8	--	--	--	--	--	--	
2014	--	--	Trimless	12	27	7 3/4	12 1/4	27 1/4	12 1/2	27 1/2	8	--	--	--	
2015	2025	2035	Flat Trim	12	27	7 3/4	15 3/8	30 3/8	13	28	7 7/8	14	29 1/8	8 1/2	Any Cosmic, Any Galaxy
2016	2026	2036	1 1/4" Square	12	27	7 3/4	15 3/8	30 3/8	13	28	6 3/4	14	29 1/8	7 3/8	Grenadier P**, Sentinel 5, 10
2017	2027	2037	2 1/2" Rolled	12	27	7 3/4	15 3/8	30 3/8	13	28	5 1/2*	14	29 1/8	6 3/8*	Any Mercury
2012	2022	2032	4" Rolled	12	27	7 3/4	15 3/8	30 3/8	13	28	4*	14	29 1/8	4 5/8*	Any Saturn, 272
2018	2028	2038	4 1/2" Rolled	12	27	7 3/4	15 3/8	30 3/8	13	28	3 1/2*	14	29 1/8	4 1/8*	
2013	2023	2033	Surf. Mtd.	15 3/16	30 3/16	8 1/4	15 3/8	30 3/8	--	--	--	--	--	--	
3015	3025	3035	Flat Trim	16	32	7 3/4	19 3/8	35 3/8	17	33	7 7/8	18	34 1/8	8 1/2	Any Cosmic, Any Galaxy
3016	3026	3036	1 1/4" Square	16	32	7 3/4	19 3/8	35 3/8	17	33	6 3/4	18	34 1/8	7 3/8	Grenadier P**, Sentinel 5, 10, 15
3017	3027	3037	2 1/2" Rolled	16	32	7 3/4	19 3/8	35 3/8	17	33	5 1/2*	18	34 1/8	6 3/8*	Any Mercury
3012	3022	3032	4" Rolled	16	32	7 3/4	19 3/8	35 3/8	17	33	4*	18	34 1/8	4 5/8*	Any Saturn, 272
3018	3028	3038	4 1/2" Rolled	16	32	7 3/4	19 3/8	35 3/8	17	33	3 1/2*	18	34 1/8	4 1/8*	
3013	3023	3033	Surf. Mtd.	19 3/16	35 3/16	8 1/4	19 3/8	35 3/8	--	--	--	--	--	--	
4015	4025	4035	Flat Trim	20	27	7 3/4	23 3/8	30 3/8	21	28	7 7/8	22	29 1/8	8 1/2	Two each of:
4016	4026	4036	1 1/4" Square	20	27	7 3/4	23 3/8	30 3/8	21	28	6 3/4	22	29 1/8	7 3/8	Any Cosmic, Any Galaxy
4017	4027	4037	2 1/2" Rolled	20	27	7 3/4	23 3/8	30 3/8	21	28	5 1/2*	22	29 1/8	6 3/8*	Grenadier P**, Sentinel 5, 10,
4012	4022	4032	4" Rolled	20	27	7 3/4	23 3/8	30 3/8	21	28	4*	22	29 1/8	4 5/8*	Any Mercury,
4018	4028	4038	4 1/2" Rolled	20	27	7 3/4	23 3/8	30 3/8	21	28	3 1/2*	22	29 1/8	4 1/8*	Any Saturn, 272
4013	4023	4033	Surf. Mtd.	23 3/16	30 3/16	8 1/4	23 3/8	30 3/8	--	--	--	--	--	--	

Dimensions in Inches

*ADD 5/8" FOR CABINETS WITH ALUMINUM FRAMES.

**WHEN USING GRENADE P WITH FIRE-FX™ OPTION CABINET, THE EXTINGUISHER MUST BE MOUNTED ON THE BACK OF THE CABINET TUB.

FIRE EXTINGUISHER CABINETS

CLEAR VU SERIES: Acrylic Bubble Cabinet in Aluminum, Steel, Stainless, Bronze or Brass



Door and Trim Construction: US10 satin bronze, US3 polished brass, #180 clear anodized aluminum, #4 stainless steel or CRS with white powder coat finish. Flush cabinet doors with a 5/8" door stop are attached by a continuous hinge and equipped with zinc-plated handle and roller catch.

Bubble: Acrylic bubble allows 180° extinguisher visibility. 2 1/2" projection.

Trim Style and Depth: Recessed - 3/8" flat trim, Semi-Recessed - 1 1/4", 1 1/2" Square Edge or 2 1/2", 3", Rolled Edge. Surface-mount has a square edge or optional rolled edge for steel or stainless steel upon request. 1 3/4" face trim on frame and door.

Tube: Constructed of cold rolled steel with white powder-coat finish standard.

Fire-Rated Option Available: Yes

Door Styles

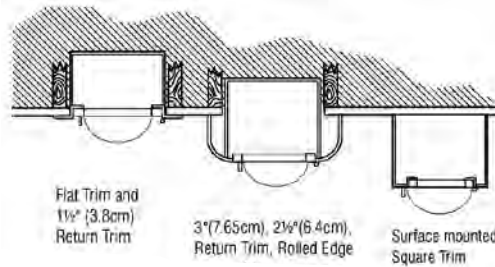
- F Full Acrylic w/pull
- G Full Acrylic with SAF-T-LOK™

Options at Additional Cost

- Aluminum Tub for Aluminum Cabinets Only (Non-Rated Use)
- Color Painted Tub (Red or Black)
- Color Anodized Aluminum – Light, Medium or Dark
- Vertical or Horizontal Lettering. See Page 21.
- FIRE-FX Fire-Rated Tub Option
- Futura Embossed "Fire" Handle - Mill or White
- US 9 Bright Polished Bronze
- US 4 Satin Brass
- US 10B Dark Oxidized Oil-Rubbed Bronze
- Wall Signs and Alarms. See Page 20

Bubble

- 25 Clear Acrylic
- 26 Red Acrylic
- 27 Bronze Acrylic



CLEAR VU
1537G25
WITH SAF-T-LOK™

Door Material and Series #						Tub I.D.			Frame O.D.		Wall Opening: Non-Rated			Wall Opening: FX Option			Accommodates Following Extinguishers
Steel	Aluminum*	Stainless Steel	Bronze	Brass	Trim Style	A	B	C	E	F	W	H	D	W	H	D	
1515	1525	1535	1545	1555	Flat Trim	10 1/2	24	4	13 7/8	27 3/8	11 1/2	25	4	12 1/2	26 1/8	4 7/8	Cosmic 2 1/2E, 5E, 5X, 6E, 10E, Galaxy 2 1/2, 5, 5 1/2, 6, 10 Sentinel 5, Mercury 2 1/2, 5
1516	1526	1536	1546	1556	1 1/2" Square	10 1/2	24	4	13 7/8	27 3/8	11 1/2	25	2 5/8	12 1/2	26 1/8	3 1/2	
1517	1527	1537	1547	1557	3" Rolled	10 1/2	24	4	13 7/8	27 3/8	11 1/2	25	1 1/8	12 1/2	26 1/8	2	
1513	1523	1533	1543	1553	Surf. Mtd.	13 11/16	27 3/16	4 5/8	13 7/8	27 3/8	--	--	--	--	--	--	Any Cosmic, Any Galaxy, Sentinel 5, 10 Grenadier P**, Mercury 2 1/2, 5
2515	2525	2535	2545	2555	Flat Trim	14	30	4	17 3/8	33 3/8	15	31	4	16	32 1/8	4 7/8	
2516	2526	2536	2546	2556	1 1/4" Square	14	30	4	17 3/8	33 3/8	15	31	2 7/8	16	32 1/8	3 3/4	
2517	2527	2537	--	--	2 1/2" Square	14	30	4	17 3/8	33 3/8	15	31	1 5/8*	16	32 1/8	2 1/2*	Two each of: Any Cosmic Any Galaxy, Sentinel 5, 10 Mercury 2 1/2, 5,
2513	2523	2533	2543	2553	Surf. Mtd.	17 3/16	33 3/16	4 5/8	17 3/8	33 3/8	--	--	--	--	--	--	
4515	4525	4535	--	--	Flat Trim Double Door	28	30	4	31 3/8	33 3/8	29	31	4	30	32 1/8	4 7/8	
4513	4523	4533	--	--	Surf. Mtd. Double Door	31 3/16	33 3/16	4 5/8	31 3/8	33 3/8	--	--	--	--	--	--	

Dimensions in Inches

*ADD 5/8" TO WALL DEPTH FOR A CABINET WITH AN ALUMINUM FRAME. 4500 SERIES CONSIST OF A DOUBLE DOOR DESIGN.

**WHEN USING GRENADIER P WITH FIRE-FX™ OPTION CABINET, THE EXTINGUISHER MUST BE MOUNTED ON THE BACK OF THE CABINET TUB.

SMB SERIES: Surface-Mounted Acrylic Bubble and Steel Cabinet



Door and Trim Construction: Cold rolled steel with six standard powder-coated colors to choose from - black, white, red, bronze, silver or gray hammertone. Flush cabinet doors with a 5/8" door stop are attached by a continuous hinge and equipped with zinc-plated handle and roller catch. Custom powder-coat finishes available upon request. See page 24.

Bubble: Acrylic bubble allows 180° extinguisher visibility. 2-1/2" projection.

Trim Style and Depth: This surface-mounted cabinet has a 3" rolled edge that forms a tub. 3" deep tub constructed of cold rolled steel with white powder-coat finish standard.

Fire-Rated Option Available: No

Options at Additional Cost: Vertical or Horizontal Lettering. See Page 21.



Door Finishes

- BK Black
- W White
- R Red
- GH Gray Hammertone
- B Bronze
- BRA Brass
- SA Silver

Door Glazing

- 25 Clear Acrylic
- 26 Red Acrylic
- 27 Bronze Acrylic

Model							Frame Inside Dimensions	Frame Outside Dimensions	Accommodates Following Extinguishers
White	Hammertone	Brass	Bronze	Silver	Red	Black			
SMB-W	SMB-GH	SMB-BRA	SMB-B	SMB-SA	SMB-R	SMB-BK	13 13/16 x 27 5/16	13 15/16 x 27 7/16	Cosmic and Galaxy 2 1/2-10, Mercury 2 1/2, 5

Dimensions in Inches

FIRE EXTINGUISHER CABINETS

EMBASSY SERIES: Decorative Trimless Recessed Cabinet

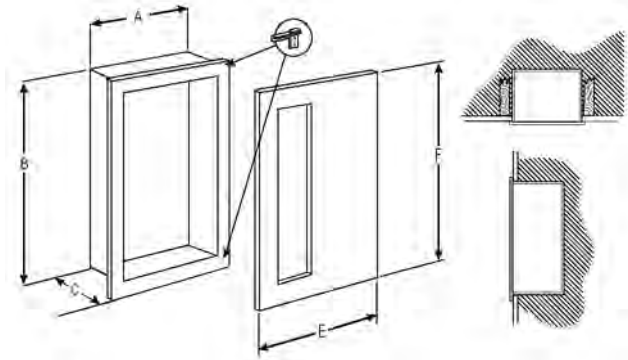
Door and Trim Construction: These 7/8" formed design cabinet doors are available in # 4 satin stainless steel, US 10 satin bronze, US 3 polished brass, # 180 clear anodized aluminum or white powder coated steel. Doors feature two concealed hinges and concealed handle and roller catch.

Trim Style and Depth: None

Tub: Constructed of cold rolled steel with white powder-coat finish standard.

Unique Options: The 5900 Series is equipped with a shelf 12" from the bottom. Knockouts are located 6" from the bottom and 4 1/4" from the back on both the right- and left-hand sides.

Fire-Rated Option Available: Yes



Door Styles w/pull

- S21 Solid (concealed pull)
- V Vertical Duo (concealed pull)
- W Vertical Duo with SAF-T-LOK™
- L22 Solid with SAF-T-LOK™

Door Glazing

- 10 Clear Acrylic
- 13 Clear Wire Glass
- 15 Bronze Acrylic
- 16 Gray Acrylic
- 17 Clear Tempered Glass
- 18 Laminated Safety Glass

Options at Additional Cost

- Aluminum Tub for Non-Rated Use
- Color Painted Door or Tub - Steel Only
- Etched or Engraved Lettering in Glass or Metal
- Vertical or Horizontal Lettering. See Page 21
- FIRE-FX Fire-Rated Tub Option
- Futura Embossed "Fire" Handle - Mill or White
- Wall Signs and Alarms, See Page 20
- Color Anodized Aluminum, See Page 24

- #6 Satin, #7 Polished, #8 Mirror Stainless
- US9 Polished Bronze Door - Clear Coated
- US10B Oil-Rubbed Bronze Door - Clear Coated
- US4 Satin Brass Door - Clear Coated

Door Material and Series #					Tub I.D.			Door O.D. NFR**		Wall Opening: Non-Rated			Wall Opening: FX Option			Accommodates Following Extinguishers	
Steel	Aluminum	Stainless Steel	Bronze	Brass	Trim Style	A	B	C	E	F	W	H	D	W	H		D
5614	5624	5634	5644	5654	Trimless	10 1/2	24	6	12 3/4	26 1/4	11 1/2	25	6	12 1/2	26 1/8	6 7/8	Cosmic 2 1/2E, 5E, 5X, 6E, 10E Galaxy 2 1/2, 5, 5 1/2, 6, 10 Sentinel 5 Mercury 2 1/2, 5
5714	5724	5734	5744	5754	Trimless	16	32	7 3/4	18 1/4	34 1/4	17	33	8	18	34 1/8	8 7/8	Any Cosmic, Any Galaxy, Grenadier P*, Sentinel 5, 10, 15 Mercury 2 1/2, 5, Any Saturn
Fire Department Valve, Hose & Extinguisher Cabinets																	
5514	5524	5534	5544	5554	Trimless	18	18	7 3/4	20 1/4	20 1/4	19	19	8	20	20 1/8	8 7/8	1-1/2" or 2-1/2" Fire Department Valve Left & Right K.O.'s 9" from top, 4" from back
5814	5824	5834	--	--	Trimless	32	32	7 3/4	34 1/4	34 1/4	33	33	8	--	--	--	1-1/2" or 2-1/2"x1-1/2" rack unit & 2-1/2" Fire Department Valve or Fire Extinguisher. 2 Left K.O.'s 4" from back, top & bottom.
5914	5924	5934	5944	5954	Trimless	16	40	8 3/4	18 1/4	42 1/4	17	41	9	18	42 1/8	9 7/8	2-1/2" Fire Department Valve & Fire Extinguisher Left K.O. 6" from bottom & 4-1/2" from back, Right K.O 6" from top & 4-1/2" from back

Dimensions in Inches

*WHEN USING GRENADIER P WITH FIRE-FX™ OPTION CABINET, THE EXTINGUISHER MUST BE MOUNTED ON THE BACK OF THE CABINET TUB.

** FIRE-RATED CABINET DOORS ARE 1" TALLER AND WIDER THAN NON-FIRE-RATED CABINET DOORS

ALL MODELS SHOWN ON THIS PAGE ARE ADAC-COMPLIANT



CAVALIER SERIES: Decorative Bronze or Brass Cabinet

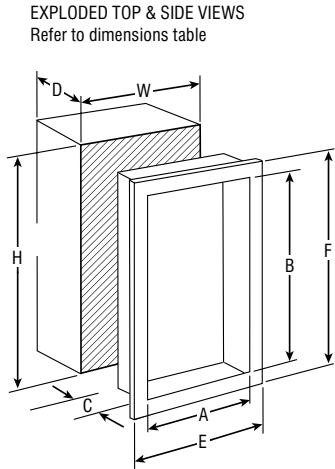
Door and Trim Construction: Standard finishes are US10 satin bronze or US3 polished brass. Flush cabinet doors with a 5/8" door stop are attached by a continuous hinge and equipped with zinc-plated handle and roller catch.

Trim Style and Depth: Recessed - 3/8" flat trim. Semi-Recessed - 1 1/4", 1 1/2" Square Edge or 3" Rolled Edge. Surface-mount has a square edge. 1 3/4" face trim on frame and door.

Tub: Constructed of cold rolled steel with white powder-coat finish standard. Surface mounted models have brass or bronze tubs.

Unique Options: Large selection of Bronze and Brass finishes.

Fire-Rated Option Available: Yes



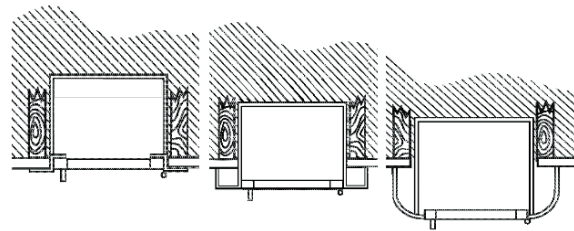
Flat Trim and
1 1/2" (3.8cm)
Return Trim



CAVALIER BRASS
1056V10FX



CAVALIER BRONZE
1043V10



Door Styles w/pull

- F Full Glazing
- G Full Glazing & SAF-T-LOK™
- D Horizontal Duo Panel
- E Horizontal Duo Panel & SAF-T-LOK™
- S21 Solid
- L22 Solid with SAF-T-LOK™
- L24 Solid with Cylinder Lock & No Handle
- B10 Solid with Glass Insert & SAF-T-LOK™
- V Vertical Duo
- W Vertical Duo & SAF-T-LOK™

Door Glazing

- 10 Clear Acrylic
- 13 Clear Wire Glass
- 15 Bronze Acrylic
- 16 Gray Acrylic
- 17 Clear Tempered Glass
- 18 Laminated Safety Glass

Options at Additional Cost

- Vertical or Horizontal Lettering - See Page 21
- Futura Embossed "Fire" Handle in Mill, White or Red
- Pulls - ADA, Bronze, Brass. See page 20
- Fire-FX® Fire-Rated Tub Option
- Wall Signs, Labels & Alarms- See Page 20
- Panorama-Style Full Acrylic Door
- Optional Standard Color Frame/Door/Tub - see Page 24
- Optional Color tub - see page 24
- Engraved Metal or Etched Glass Lettering See page 21
- Bronze: US9 Bright Polished, US10B Oil-rubbed Finishes
- Brass: US4 Satin Finish

Trim and Door Material and Series #			Tub I.D.			Door O.D.*		Wall Opening: Non-Rated			Wall Opening: FX Option			Accommodates Following Extinguishers
Bronze	Brass	Trim Style	A	B	C	E	F	W	H	D	W	H	D	
1845	1855	Flat Trim	10 1/2	24	5 1/2	13 7/8	27 3/8	11 1/2	25	5 1/2	12 1/2	26 1/8	6 3/8	Cosmic 2 1/2E, 5E, 5X Galaxy 2 1/2, 5, 5 1/2 Mercury 2 1/2, 5
1846	1856	1 1/2" Square	10 1/2	24	5 1/2	13 7/8	27 3/8	11 1/2	25	4	12 1/2	26 1/8	4 7/8	
1847	1857	3" Rolled	10 1/2	24	5 1/2	13 7/8	27 3/8	11 1/2	25	2 5/8	12 1/2	26 1/8	3 1/2	
1045	1055	Flat Trim	10 1/2	24	6	13 7/8	27 3/8	11 1/2	25	6	12 1/2	26 1/8	6 7/8	Cosmic 2 1/2E, 5E, 5X, 6E, 10E Galaxy 2 1/2, 5, 5 1/2, 6, 10 Sentinel 5, Mercury 2 1/2, 5
1046	1056	1 1/2" Square	10 1/2	24	6	13 7/8	27 3/8	11 1/2	25	4 5/8	12 1/2	26 1/8	5 3/8	
1047	1057	3" Rolled	10 1/2	24	6	13 7/8	27 3/8	11 1/2	25	3 1/8	12 1/2	26 1/8	4	
1043	1053	Surf. Mt.	13 11/16	27 3/16	6 1/2	13 7/8	27 3/8	--	--	--	--	--	--	Any Cosmic, Any Galaxy, Grenadier P*, Sentinel 5, 10 Mercury 2 1/2-5, 272
2045	2055	Flat Trim	12	27	7 3/4	15 3/8	30 3/8	13	28	7 3/4	14	29 1/8	8 1/2	
2046	2056	1 1/4" Square	12	27	7 3/4	15 3/8	30 3/8	13	28	6 5/8	14	29 1/8	7 3/8	
2043	2053	Surf. Mt.	15 3/16	30 3/16	8 1/4	15 3/8	30 3/8	--	--	--	--	--	--	

Dimensions in Inches

*WHEN USING GRENADIER P WITH FIRE-FX™ OPTION CABINET, THE EXTINGUISHER MUST BE MOUNTED ON THE BACK OF THE CABINET TUB.

FIRE EXTINGUISHER CABINETS

CLASSIC SERIES: Economy Galvanized Fire Extinguisher Cabinets

Tub and Door Frame: White powder-coated galvanized steel or aluminum for rust-resistance with Twin Lock Top.
Door: .060 acrylic front for protection from the elements. Breaker bar standard.

Options at Additional Cost: Have cylinder locks keyed alike for protection, optional colors. Wall signs and labels, See Page 20.
Fire-Rated Option: No



926AZ30
RECESSED MODEL
WITH OPTIONAL
FINISH



9163Z30
SURFACE MOUNT
MODEL

Previous Model Number	Trim and Door Material and Series #			Tub I.D.			Wall Opening			Weight lbs. Each	Master pkg.	Accommodates Following Extinguishers
	Gal. Steel	Aluminum	Trim Style	W	H	D	W	H	D			
99G	9163Z30	9123Z30	Surf. Mtd.	8 1/2	19 13/16	6 1/4	--	--	--	7	6	Cosmic & Galaxy 2 1/2-6, Mercury 2 1/2, Sentinel 5
99GT	916AZ20	912AZ30	2 3/4	8 1/2	19 13/16	6 1/4	9	20 5/16	3 3/4	8	6	Cosmic & Galaxy 2 1/2-6, Mercury 2 1/2, Sentinel 5
999G	9263Z30	9223Z30	Surf. Mtd.	9 1/2	25 3/4	6 1/4	--	--	--	9	4	Cosmic & Galaxy 2 1/2-10, Mercury 2 1/2-15 1/2, Sentinel 5, Grenadier P*
999GT	926AZ30	922AZ30	2 3/4	9 1/2	25 3/4	6 1/4	10	26 1/4	3 3/4	10	4	Cosmic & Galaxy 2 1/2-10, Mercury 2 1/2-15 1/2, Sentinel 5, Grenadier P*
104GT	936AZ30	932AZ30	4 1/2	10 1/2	29 3/4	8 1/4	11	30 1/4	4	17	2	All Cosmic, Galaxy, Mercury, Sentinel 5, Grenadier P*
104G	9363Z30	9323Z30	Surf. Mtd.	10 1/2	29 3/4	8 1/4	--	--	--	16	2	All Cosmic, Galaxy, Mercury, Sentinel 5, Grenadier P*

Dimensions in Inches

SLIDE TRIM WITH LESS THAN 4" EXPOSURE MEETS ADA REQUIREMENTS.

ECONOMYLINE SERIES: Economy Surface-Mounted

Construction: Cold rolled steel tub with gray hammertone powder-coat finish or rust-resistant aluminum.

Door: Sliding .060 clear acrylic front with retainer clip. Breaker bar with chain, pre-drilled holes on top lip for padlock.

Options at Additional Cost: Other colors, brass padlock, Abus padlock. Wall signs and labels, See Page 20-21.

Fire-Rated Option: No



ECONOMYLINE
5113N20

Previous Model Number	Trim and Door Material New Model #			Tub I.D.			Weight lbs. Each	Master pkg.	Accommodates Following Extinguishers
	Steel	Aluminum	Trim Style	W	H	D			
818	5013N20	5023N20	Surf. Mtd.	8 1/8	18	5 1/2	5	6	Cosmic 2 1/2, 5 Mercury 2 1/2, 5
924	5113N20	5123N20	Surf. Mtd.	9 1/8	24	5 1/2	7	4	Cosmic 10, Sentinel 5 Mercury 11
1028	5213N20	5223N20	Surf. Mtd.	10 1/8	28	8 1/4	12.5	2	Grenadier P*, Sentinel 15 Mercury 15

Dimensions in Inches

ABS SERIES: Durable, Surface-Mounted ABS Plastic

Construction: The ABS Series is constructed of injection-molded ABS plastic for a dent, rust and corrosion proof protection for your fire extinguishers. These impact-resistant cabinets include brass lock, cover and labels. Volume discounts available upon request.

Note: The height dimension includes padlock tab.

Fire-Rated Option: No



Model	Tub Size	Cabinet Color	Cover Color	Environment	Accommodates Following Extinguishers
	Height, Width, & Depth				
ABS 16RR	18 1/4 x 8 1/2 x 5 3/8	Red	Red	Indoor/Outdoor	Cosmic 2 1/2E, 5E,5X, 6E, Galaxy 2 1/2, 5, 5 1/2, 6, Mercury 2 1/2, 5
ABS 16RC	18 1/4 x 8 1/2 x 5 3/8	Red	Clear	Indoor	
ABS 16WR	18 1/4 x 8 1/2 x 5 3/8	White	Red	Indoor	
ABS 16WC	18 1/4 x 8 1/2 x 5 3/8	White	Clear	Indoor	
ABS 20RR	21 3/4 x 9 5/8 x 6 3/8	Red	Red	Indoor/Outdoor	Cosmic 2 1/2E, 5E,5X, 6E, Galaxy 2 1/2, 5, 5 1/2, 6, Mercury 2 1/2, 5, Sentinel 5
ABS 20RC	21 3/4 x 9 5/8 x 6 3/8	Red	Clear	Indoor	
ABS 20WR	21 3/4 x 9 5/8 x 6 3/8	White	Red	Indoor	
ABS 20WC	21 3/4 x 9 5/8 x 6 3/8	White	Clear	Indoor	
ABS 24RR	25 3/4 x 9 5/8 x 6 3/8	Red	Red	Indoor/Outdoor	Cosmic, Galaxy, Mercury, Sentinel 5
ABS 24RC	25 3/4 x 9 5/8 x 6 3/8	Red	Clear	Indoor	
ABS 24WR	25 3/4 x 9 5/8 x 6 3/8	White	Red	Indoor	
ABS 24WC	25 3/4 x 9 5/8 x 6 3/8	White	Clear	Indoor	

Dimensions in Inches

FIRE EXTINGUISHER CABINETS

DECORLINE SERIES: Economy Steel or Aluminum

The Decorline Series offers an Economical Solution for Interior or Exterior Applications. Select from a wide range of sizes that will fit most 2-1/2-10 lb extinguishers. Choose from 2-1/2", or 4-1/4" Trim or a Surface-mounted Design.



Construction: Cold rolled steel tub with white or gray hammertone powder-coat finish, or aluminum.

Trim: Models with trim feature 2" wide trim in either 2.5" or 4.25" depth, depending on model.

Door: Models with "AN" designation have slide in acrylic front secured by clips and tab for lock at top. All other models have door with continuous hinges and either solid door or door with acrylic window.

Fire-rated Option: No

Options at Additional Cost: Brass or Abus Padlock for "AN" models. Optional colors - See page 24.



5019G20

521AN20

Trim & Door Material and Series #				Tub I.D.			Frame O.D.		Wall Opening			Accommodates Following Extinguishers	
Steel	Aluminum	Prev. Model	Door Style	Trim Style	W	H	D	E	F	W	H		D
631AN20	--	928X	Slide-in Acrylic Front	2.5" Trim	9 1/8	28	4 1/2	12 1/8	31	9 1/4	28 1/4	2	Cosmic 2-1/2, 5, Galaxy 2-1/2, 5, 5-1/2, Mercury 2-1/2, 5
501AN20	502AN20	818T	Slide-in Acrylic Front w Breaker Bar	2.5" Trim	8 1/8	18	5 1/2	11 1/8	21	9	19	4	Cosmic& Galaxy 2-1/2, 5, 5-1/2, 6,Mercury 2-1/2, 5, Sentinel 5
511AN20	512AN20	924T		2.5" Trim	9 1/8	24	5 1/2	12 1/8	27	10	25	4	Cosmic& Galaxy 2-1/2, 5, 5-1/2, 6,10,Mercury 2-1/2, 5, Sentinel 5
521AN20	522AN20	1028T		2.5" Trim	10 1/8	28	8 1/4	13 1/8	31	11	29	6	Any Cosmic, Galaxy, Mercury, Saturn, Grenadier P, Sentinel 5
5218N20	5228N20	1028T4		4.25" Trim	10 1/8	28	8 1/4	13 1/8	31	11	29	4	
5017F20	5027F20	818TDH	Door w/ Continuous Hinge, Acrylic Window, Handle	2.5" Trim	8	17 7/8	5 5/8	11 1/4	21 1/4	9	19	3 1/4	Cosmic 2-1/2, 5, 6,Galaxy 2-1/4, 5, 5-1/2, Mercury 2-1/2, 5
5019F20	5029F20	818DH		Surface Mtd.	8	17 7/8	5 5/8	8 1/8	18	--	--	--	
5117F20	5127F20	924TDH		2.5" Trim	9	23 7/8	5 5/8	12 1/4	27 1/4	10	25	3 1/4	Cosmic 2-1/2, 5, 6,10, Galaxy 2-1/2,5, 5-1/2, 6,10, Mercury 2-1/2, 5, 11,15-1/2,15, Sentinel 5
5119F20	5129F20	924DH		Surface Mtd.	9	23 7/8	5 5/8	9 1/8	24	--	--	--	
5017G20	5027G20	818TDL	Door w/ Continuous Hinge, Acrylic Window, Handle, Saf-T-Lok	2.5" Trim	8	17 7/8	5 5/8	11 1/4	21 1/4	9	19	3 1/4	Cosmic 2-1/2, 5, 6,Galaxy 2-1/4, 5, 5-1/2, Mercury 2-1/2, 5
5019G20	5029G20	818DL		Surface Mtd.	8	17 7/8	5 5/8	8 1/8	18	--	--	--	
5117G20	5127G20	924TDL		2.5" Trim	9	23 7/8	5 5/8	12 1/4	27 1/4	10	25	3 1/4	Cosmic 2-1/2, 5, 6,10, Galaxy 2-1/2, 5, 5-1/2, 6,10, Mercury 2-1/2, 5, 11,15-1/2,15, Sentinel 5
5119G20	5129G20	924DL		Surface Mtd.	9	23 7/8	5 5/8	9 1/8	24	--	--	--	
5017S21	5027S21	818TDHS	Solid Door w/ Continuous Hinge, Handle	2.5" Trim	8	17 7/8	5 5/8	11 1/4	21 1/4	9	19	3 1/4	Cosmic 2-1/2, 5, 6,Galaxy 2-1/4, 5, 5-1/2, Mercury 2-1/2, 5
5019S21	5029S21	818DHS		Surface Mtd.	8	17 7/8	5 5/8	8 1/8	18	--	--	--	
5117S21	5127S21	924TDHS		2.5" Trim	9	23 7/8	5 5/8	12 1/4	27 1/4	10	25	3 1/4	Cosmic 2-1/2, 5, 6,10, Galaxy 2-1/2,5, 5-1/2, 6,10, Mercury 2-1/2, 5, 11,15-1/2,15, Sentinel 5
5119S21	5129S21	924DHS		Surface Mtd.	9	23 7/8	5 5/8	9 1/8	24	--	--	--	

Dimensions in Inches

CORNER VU SERIES: Steel, Stainless Steel and Aluminum Corner-Mount Cabinets

Door and Trim Construction: #4 satin stainless steel, clear anodized aluminum or cold rolled steel with white powder-coat finish standard. Flush cabinet doors with a 5/8" door stop are attached by a continuous hinge and equipped with zinc-plated handle and roller catch.

Trim Style and Depth: This corner-mounted cabinet is designed to be surface-mounted.

Tub: Cold rolled steel with white powder-coat finish standard.

Fire-Rated Option Available: No



CORNER VU 8913F10

Door Styles w/pull

- F Full Glazing
- G Full Glazing with SAF-T-LOK™
- D Horizontal Duo Panel
- S21 Solid
- L22 Solid with SAF-T-LOK™
- V Vertical Duo
- W Vertical Duo with SAF-T-LOK™

Door Glazing

- 10 Acrylic
- 17 Tempered Glass

Options at Additional Cost

- Vertical or Horizontal Lettering - See Page 21
- Futura Embossed "Fire" Handle in Mill, White or Red
- Wall Signs, Labels & Alarms- See Page 20
- Color Anodized Aluminum - See Page 24
- Optional Color Frame/Door/Tub - see Page 24
- Custom Color Frame/Door/Tub
- Engraved Metal or Etched Glass Lettering

Trim and Door Material and Series #			Outer Dimensions			Accommodates Following Extinguishers	
Steel	Aluminum	Stainless Steel	Trim Style	W	H		D
8913	8923	8933	Surf. Mtd.	15 3/4	18	8 1/8	Cosmic 2 1/2E, 5E, 5X, Galaxy 2 1/2, 5, 5 1/2 Mercury 2 1/2, 5
8813	8823	8833	Surf. Mtd.	15 3/4	24	8 1/8	Cosmic 2 1/2E, 5E, 5X, 6E, 10E, Galaxy 2 1/2, 5, 5 1/2, 6. 10 Sentinel 5 Mercury 2 1/2, 5

Dimensions in Inches

FIRE EXTINGUISHER CABINETS

RC SERIES: Corrosion-Resistant Aluminum Cabinet



Door and Trim Construction: Aluminum with satin clear anodized finish. Flush cabinet doors with a 5/8" door stop are attached by a continuous hinge and equipped with zinc-plated handle and roller catch.

Trim Style and Depth: Rolled edge on Semi-Recessed: 1 3/8", 3" or Surface-Mount: with 1 5/8" face-width

Tub: Aluminum with white powder coat finish. Surface-mounted cabinets have anodized aluminum tubs.

Fire-Rated Option Available: Yes - with steel FIRE-FX tub option

Door Styles w/pull

- F Full Glazing
- G Full Glazing with SAF-T-LOK™
- D Horizontal Duo Panel
- E Horizontal Duo Panel Glazing with SAF-T-LOK™
- S21 Solid
- L22 Solid with SAF-T-LOK™ and Handle
- V Contemporary Vertical Duo
- W Contemporary Vertical Duo with SAF-T-LOK™

Options at Additional Cost

- Chrome Ring Pull
- Vertical or Horizontal Lettering - Pg 21
- Futura Embossed "Fire" Handle in Mill, White or Red
- ADA Flush Pull
- Fire-FX® Fire-Rated Steel Tub Option
- Wall Signs, Labels & Alarms- Pg 21
- Color Anodized Aluminum pg 24
- Optional Painted Frame/Trim/Tub - Red or Black pg 24
- Custom Color Frame/Trim/Tub
- Engraved Metal or Etched Glass Lettering
- Anodized Aluminum tub for non-rated use.

Door Glazing

- 10 Clear Acrylic
- 13 Clear Wire Glass
- 15 Bronze Acrylic
- 16 Gray Acrylic
- 17 Clear Tempered Glass



RC 1126F10

Trim and Door Material and Series #	Previous Model #	Trim Style	Tub I.D.			Frame O.D.			Wall Opening: Non-Fire-Rated			Wall Opening: Fire-Rated			Accommodates Following Extinguishers
			W	H	D	W	H	D	W	H	D	W	H	D	
		Rolled Edge													
1126	RC-5	1 3/8	9	18	4 11/16	12 1/4	21 1/4	10	19	4	--	--	--	Cosmic 2-1/2, Galaxy 2 1/2 or Mercury 2 1/2	
1127	RC5SR3	3	9	18	4 11/16	12 1/4	21 1/4	10	19	2 3/8	--	--	--		
1129	RC-5SM	Surf. Mtd.	12 1/8	24 1/8	4 11/16	12 1/4	21 1/4	--	--	--	--	--	--		
1225	RC-10	1	10 1/2	24	6	13 3/4	27 1/4	11 1/2	25	5 11/16	12 1/2	26 1/8	6 1/16	Cosmic 2 1/2-10, Galaxy 2 1/2, Mercury 2 1/2-5, Sentinel 5	
1226	RC-10SR1	1 3/8	10 1/2	24	6	13 3/4	27 1/4	11 1/2	25	5 1/2	12 1/2	26 1/8	5 11/16		
1227	RC-10SR3	3	10 1/2	24	6	13 3/4	27 1/4	11 1/2	25	1 1/4	12 1/2	26 1/8	4 1/16		
1228	RC-10SR5	5 7/16	10 1/2	24	6	13 3/4	27 1/4	11 1/2	25	1 1/4	12 1/2	26 1/8	1 5/8		
1229	RC-10SM	Surf. Mtd.	13 5/8	27 1/8	6 1/4	13 3/4	27 1/4	--	--	--	--	--	--		
1325	RC-20	1	12	27	8	15 5/16	30 1/4	13	28	7 11/16	14	29 1/8	8 5/16	Any Cosmic, Galaxy or Mercury	
1326	RC-20SR1	1 3/8	12	27	8	15 5/16	30 1/4	13	28	7 5/16	14	29 1/8	7 15/16		
1327	RC-20SR3	3	12	27	8	15 5/16	30 1/4	13	28	5 11/16	14	29 1/8	6 5/16		
1328	RC-20SR5	5 7/16	12	27	8	15 5/16	30 1/4	13	28	3 1/4	14	29 1/8	3 7/8		
1329	RC-20SM	Surf. Mtd.	15 1/8	30 1/8	8	15 5/16	30 1/4	--	--	--	--	--	--		

Dimensions in Inches

SM SERIES: Economical Surface-Mount Aluminum Cabinet



Construction: All aluminum with white powder coat finish standard. Cabinet is hinged on top and plexiglass front slides in.

Door: Full Breakaway Plexiglass, with center pull handle and tamperproof security screws.

Options: Other colors - see page 24. TSHS Spanner Tool Head Screwdriver. Wall Signs and Labels - see page 20.

Fire-Rated Option: No

Door Styles

- J Center Pull Handle w/ Tamperproof Screws
- G Center Pull Handle w/ Cylinder Lock

Door Glazing

- 30 Clear Plexiglass



SM6773J

Model #	Previous Model #	Depth of Cabinet	Frame O.D.			Glazing Size		Master Pack Number	Accommodates Following Extinguishers
			W	H	Projection	W	H		
6473	SM-5	4 1/2	9	21 1/8	5 7/16	7 7/8	20 1/2	5	Cosmic, Galaxy or Mercury 2 1/2 and 5
6573	SM-10	5 1/2	9 7/8	24 1/8	6 7/16	9	23 9/16	5	Cosmic, Galaxy or Mercury 2 1/2 - 10/11
6773	SM-20	7 13/16	11	28	8 3/4	10 1/4	27 9/16	1	Cosmic, Galaxy, Mercury
6973	SM-30	9 1/16	14	30	10	13 1/4	29 7/8	1	Cosmic, Galaxy, Mercury

Dimensions in Inches

FIRE EXTINGUISHER CABINETS



RBC SERIES: Corrosion-Resistant Aluminum Bubble Cabinet

Door and Trim Construction: All clear anodized aluminum construction. Flush cabinet doors with a 5/8" door stop are attached by a continuous hinge and equipped with zinc-plated handle and roller catch.

Bubble: Acrylic bubble projects 2-1/2" and allows allows 180° extinguisher visibility.

Trim Style and Depth: Semi-Recessed - 1", 1 3/8" or 3" Rolled Edge. Surface-mount has rolled edge. 1 3/4" face trim on frame and door.

Tub: Aluminum with white powder coat finish. Surface-mounted cabinets have anodized aluminum tubs..

Fire-Rated Option Available: Yes - with steel FIRE-FX tub option

Door Styles

F Full Acrylic

G Full Acrylic with SAF-T-LOK™ w/pull

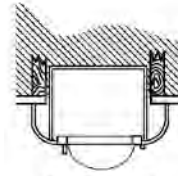
Options at Additional Cost

Vertical or Horizontal Lettering - See Page 21

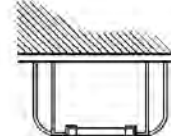
Futura Embossed "Fire" Handle in Mill, White or Red
Optional Painted Frame/Trim/Tub - White, Red, Black or Bronze

Custom Color Frame/Trim/Tub

Wall Signs, Labels & Alarms- See Page 20



Semi-Recessed
1", 1-3/8", 3"
Rolled Edge



Surface-Mounted
Rolled Edge



RBC 5527F25

Bubble

25 Clear Acrylic

26 Red Acrylic

27 Bronze Acrylic

Trim and Door Material and Series #	Previous Model #	Trim Style	Tub I.D.			Frame O.D.		Wall Opening			Wall Opening: Fire-Rated			Accommodates Following Extinguishers
			W	H	D	W	H	W	H	D	W	H	D	
		Rolled Edge												
5525	RBC-10	1	10	24	3 1/2	13 1/4	27 1/4	11	25	2 1/2	13 1/4	27 1/4	3 3/16	Cosmic or Galaxy 2 1/2 - 10, Mercury 2 1/2, 5, Sentinel 5
5526	RBC-10SR1	1 3/8	10	24	3 1/2	13 1/4	27 1/4	11	25	2 1/8	13 1/4	27 1/4	2 13/16	
5527	RBC-10SR3	3	10	24	3 1/2	13 1/4	27 1/4	11	25	1/2	13 1/4	27 1/4	1 3/16	
5529	RBC-10SM	Surf. Mtd.	13 1/8	27 1/8	4 11/16	13 1/4	27 1/4	--	--	--	--	--	--	
9525	RBC-20	1	13 1/2	29 3/8	4	16 3/4	32 5/8	14 1/2	30 3/8	3	16 3/4	32 5/8	3 11/16	
9526	RBC-20SR1	1 3/8	13 1/2	29 3/8	4	16 3/4	32 5/8	14 1/2	30 3/8	2 5/8	16 3/4	32 5/8	3 5/16	
9527	RBC-20SR3	3	13 1/2	29 3/8	4	16 3/4	32 5/8	14 1/2	30 3/8	2 1/2	16 3/4	32 5/8	1 11/16	
9529	RBC-20SM	Surf. Mtd.	16 5/8	32 1/2	4 11/16	16 3/4	32 5/8	--	--	--	--	--	--	

Dimensions in Inches

CANOPY SERIES: Surface-Mounted Aluminum Bubble Cabinet

Door and Trim Construction: All clear anodized aluminum construction. Flush cabinet doors with a 5/8" door stop are attached by a continuous hinge and equipped with aluminum turn knob and roller catch. Extinguisher to be mounted to wall using bracket

Bubble: Acrylic bubble allows 180° extinguisher visibility. Projection - B525-7-1/4", C525 - 8-1/2".

Trim Style and Depth: Aluminum surface-mounted frame with 1" projection. Trim on frame is 1-5/8", door trim is 1-3/8"

Tub: None

Fire-Rated Option Available: No

Bubble

25 Clear Acrylic

26 Red Acrylic

27 Bronze Acrylic

Options at Additional Cost

Custom Finishes

White or Bronze Painted Door and Trim

Wall Signs and Labels. See Page 20

Vertical or Horizontal Lettering - See Page 21

Pull Handle



B525F25

Trim and Door Material and Series #	Previous Model #	Projection with Bubble	Frame I.D.		Frame O.D.		Accommodates Following Extinguishers
			W	H	W	H	
B525	SMB-10	7 5/8	12 5/16	28 3/16	15 5/8	31 1/2	Cosmic & Galaxy 2-1/2 to 10, Sentinel 5, Mercury 2-1/2 to 10
C525	SMB-20	9 3/4	15	35 1/2	18 5/16	38 11/16	Cosmic & Galaxy 2-1/2 to 20, Sentinel 5-10, Mercury 2-1/2 to 15, Saturn 15, Grenadier P

Dimensions in Inches

FIRE HOSE AND VALVE CABINETS

SECURITY AND DETENTION CABINETS

JL security and detention cabinets for fire extinguishers, fire hoses or fire department valves are constructed to meet maximum security requirements in areas where fire protection is required. All recessed models have heavy-duty masonry anchors welded to the frame.

Door and Trim: 12 gauge (0.27 cm) steel with white powder coat finish, or 14 gauge #4 satin stainless finish. Flush cabinet doors are mounted in a 5/8" door stop and attached by a heavy-duty continuous hinge. Non-rated cabinets have 1-1/2" face trim on frame.

Trim Style and Depth: 1-1/2" trim on frame. Available in Recessed with flat trim, Semi-recessed with 2-1/2" square trim or Surface-mount model with square edge. Heavy duty masonry anchors are welded to frame on all recessed cabinets.

Tub: Steel models have 14 gauge steel with white powder coat primer finish. Stainless steel models have 14 gauge stainless tub.

Fire-Rated Option Available: Yes.



SFC 15
W/DETENTION DEADBOLT



SFC-15 W/DETENTION DEADLOCK



MORTISE CYLINDER CAM LOCK



MORTISE DEADBOLT

Options At Additional Cost:

ADA Flush Pull
Vertical or Horizontal Lettering - Pg. 21
Optional Colors for Steel Cabinets. See Pg 24.
Duo Panel Door with Lexan® Glazing

Lock Options At Additional Cost:

Mortise Deadbolt Prep or Prep w/Lock
Mortise Cylinder Prep or Prep w/Lock
Detention Deadlock Prep or Prep w/Lock
Detention Slam Lock Prep or Prep w/Lock

TRIM & DO OR MATERIAL & SERIES			TUB I.D. W x H x D in Inches			*FRAME O.D. W x H in Inches		WALL OPENING NON-RATED			WALL OPENING FX OPTION			K.O. LOCATIONS		SHIP WT LBS	RECOMMENDED EXTINGUISHER, HOSE & RACK
STEEL	STAINLESS	TRIM STYLE	A	B	C	E	F	Width	Height	Depth	Width	Height	Depth	J	G		
SECURITY FIRE EXTINGUISHER CABINETS (SFC)																	
SFC-11	SSFC-31	Flat Trim	10-1/2	24	6-1/2	12-1/2	26	11-1/2	25	7	12-1/2	26-1/2	7-1/2	--	--	25	Cosmic 2-1/2E, 5E, 5X, 6E, 10E, Galaxy 2-1/2, 5, 5-1/2, 10, Sentinel 5
SFC-12	SSFC-32	2-1/2" Sqr. Trim	10-1/2	24	6-1/2	12-1/2	26	11-1/2	25	4-1/2	12-1/2	26-1/2	5	--	--	26	
SFC-13	SSFC-33	Surface Mt. Sq.	13	26-1/2	8	13	26-1/2	--	--	--	--	--	--	--	--	26	
SFC-15	SSFC-35	Flat Trim	12	27	8-1/2	14	29	13	28	9	14	29-1/2	9-1/2	--	--	33	Any Cosmic, Galaxy, Saturn or Grenadier P.
SFC-16	SSFC-36	2-1/2" Sqr. Trim	12	27	8-1/2	14	29	13	28	6-1/2	14	29-1/2	7	--	--	34	Sentinel 5 or 10, Mercury 2-1/2 or 5
SFC-17	SSFC-37	Surface Mt. Sq.	14-1/2	29-1/2	10	14-1/2	29-1/2	--	--	--	--	--	--	--	--	34	
SECURITY VALVE CABINETS (SVC)																	
SVC-11	SSVC-31	Flat Trim	18	18	8-1/2	20	20	19	19	9	20	20-1/2	9-1/2	5	5	32	
SVC-12	SSVC-32	2-1/2" Sqr Trim	18	18	8-1/2	20	20	19	19	6-1/2	20	20-1/2	7	4-1/2	4-1/2	33	1-1/2" or 2-1/2" Fire Department Valve
SVC-13	SSVC-33	Surface Mt. Sq.	20-1/2	20-1/2	10	20-1/2	20-1/2	--	--	--	--	--	--	--	--	33	
SECURITY HOSE CABINETS (SHC)																	
SHC-11	SSHC-31	Flat Trim	32-3/4	34-3/4	8	34-3/4	36-3/4	33-3/4	35-3/4	8-1/2	34-3/4	36-3/4	9	4	4	88	1-1/2" or 2-1/2" Hose Rack, & Extinguisher, or Fire Department Valve & Extinguisher
SHC-12	SSHC-32	2-1/2" Sqr. Trim	32-3/4	34-3/4	8	34-3/4	36-3/4	33-3/4	35-3/4	6	34-3/4	36-3/4	6-1/2	4	4	95	
SHC-13	SSHC-33	Surface Mt. Sq.	36-3/4	38-3/4	8	36-3/4	38-3/4	--	--	--	--	--	--	--	--	104	

* Fire rated cabinets - add 1" to frame OD.

SCHOOL CABINETS

Door and Trim: 12 gauge steel or 14 gauge stainless steel door with tempered glass is mounted in a 5/8" door stop, attached by a continuous hinge and equipped with zinc-plated handle.

Trim Style: Recessed - Flat Trim. Surface mount and semi-recessed models have a square edge.

Tub: 16 gauge steel with white powder-coated primer. Stainless steel models have stainless tub.

Options at Additional Cost: Duo panel door with Lexan® glazing, ADA pull, red powder-coated finish, SAF-T-LOK™, vertical or horizontal lettering in red, white or black - see page 21. Other door styles - contact customer service.

Fire-Rated Option Available: Yes



SCHOOL CABINET
CS2015F17

Model		Tub I.D.			*Frame O.D.		Wall Opening: Non-Rated			Wall Opening: FX Option			Ship Wt. Lbs.	Accommodates Following Extinguishers
Steel	Trim Style	A	B	C	E	F	W	H	D	W	H	D		
CS2015F17	Flush Trim	12	27	7 3/4	14	29	13	28	8	14	29	8 3/4	33	Any Cosmic, Galaxy, Grenadier P*, Sentinel 5, 10 Mercury 2 1/2, 5 Any Saturn
CS2017F17	2 1/2	12	27	7 3/4	14	29	13	28	5 1/2	14	29	6 1/2	34	
CS2013F17	Surf. Mtd.	14 1/2	29 1/2	8	14 1/2	29 1/2	--	--	--	--	--	--	34	

Dimensions in Inches

*WHEN USING GRENADIER P WITH FIRE-FX™ OPTION CABINET, THE EXTINGUISHER MUST BE MOUNTED ON THE BACK OF THE CABINET TUB.



FIRE HOSE EQUIPMENT CABINET

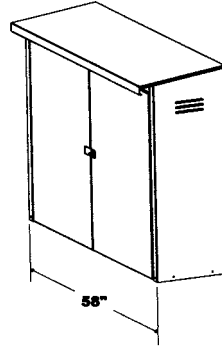
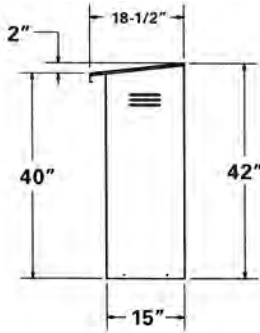
JL's equipment cabinets offer convenient storage of hoses and equipment for us by fire department and plant personnel.

Door and Trim Construction: 16 gauge galvanized steel, red powder-coated finish. Features removable, adjustable shelf, door hasp, and louvers on both sides of cabinet for ventilation. Top is sloped to shed moisture.

Dimensions: 58" wide x 42" high x 15" deep

Options at Additional Cost: "L" locking chrome handle..

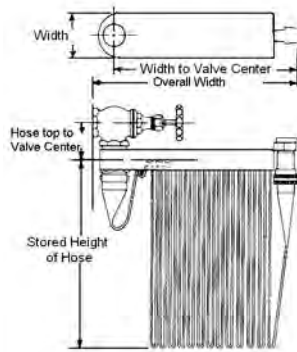
Models: With 12" legs HECIGL, Without legs HECIG.



3000, 3100 AND 3200 SERIES: Fire Hose Rack Assembly

Operation: One-man operation for immediate means of fire control.

Ratings: 100 GPM at 65 PSI at the nozzle. Hose is FM-approved, Industrial Fog Nozzle, Angle Valve and Pin Rack are UL-rated. Models 3005-3110 rated for Class II Service under NFPA/FEMA Class of service. Models 3205-3212 rated for Class II and Class III Service under NFPA/FEMA Class of service.



Model #	Hose Length	Hose Diameter	Hose Type	Valve Size	Rack Length	Class of Service	Stored Height of Hose	Width of Rack	Height from Hose Top to Valve Center	Overall Width of Stored Unit to Valve Center
Basic Unit For 1 1/2" Hose and Valve with Single Jacket Lined Hose, Industrial Fog Nozzle, Red Enamel Pin Rack and Cast Brass Coupling, Angle Valve, Escutcheon and Nipple										
3005	50'	1 1/2"	Poly Lined Hose	1 1/2"	17 7/8	II	23	4 1/8	3 7/8	19 3/4
3007	75'	1 1/2"		1 1/2"	17 7/8	II	23	4 1/8	3 7/8	19 3/4
3010	100'	1 1/2"		1 1/2"	17 7/8	II	23	4 1/8	3 7/8	19 3/4
Basic Unit Above, with Red Enamel Rack, Chrome-plated Brass Fittings and Chrome-plated Rough Brass Valve										
3105	50'	1 1/2"	Poly Lined Hosed	1 1/2"	17 7/8	II	23	4 1/8	3 7/8	19 3/4
3107	75'	1 1/2"		1 1/2"	17 7/8	II	23	4 1/8	3 7/8	19 3/4
3110	100'	1 1/2"		1 1/2"	17 7/8	II	23	4 1/8	3 7/8	19 3/4
Basic Unit For 1 1/2" Hose and 2 1/2" Valve with Single Jacket Lined Hose, Industrial Fog Nozzle, Red Enamel Pin Rack and Cast Brass Coupling, Angle Valve, Reducer, Escutcheon and Nipple										
3205	50'	1 1/2"	--	2 1/2"	17 7/8	II and III	23	4 1/8	4 1/8	20 1/16
3207	75'	1 1/2"	Poly Lined Hose	2 1/2"	17 7/8	II and III	23	4 1/8	4 1/8	20 1/16
3210	100'	1 1/2"		2 1/2"	17 7/8	II and III	25	4 1/8	4 1/8	20 1/16
3212	125'	1 1/2"		2 1/2"	17 7/8	II and III	28	4 1/8	4 1/8	20 1/16
SEE CROWLINE SERIES FOR CABINETS TO FIT FIRE HOSE RACK ASSEMBLIES										
Dimensions in Inches										

FIRE HOSE AND VALVE CABINETS

CROWNLINE 6000-7200 SERIES: Cabinets for Fire Hoses and Extinguishers

CROWNLINE 8000 SERIES: Cabinets for Fire Department Valves

Door and Trim: #4 stainless steel, clear anodized aluminum or cold rolled steel with white powder-coat finish standard. 1 3/4" Trim on face and door. These flush cabinet doors are mounted in a 5/8" door stop are attached by a continuous hinge and equipped with zinc-plated handle and roller catch for all non-break glazed doors.

Trim Style and Depth: Recessed - 3/8" flat trim or trimless (install before wallboard). Semi-Recessed - 1 1/4" Square Edge or 2 1/2", 3", 4", 4 1/2" Rolled Edge. Surface-mount has a square edge or optional rolled edge for steel or stainless steel upon request. 1 3/4" face trim on frame and door.

Tub: White powder-coated cold rolled steel. Surface-mounted stainless steel models feature a galvanized back panel.

Fire-Rated Option Available: Yes



6517V10
SHOWN IN OPTIONAL RED FINISH



6337F10



6325A10
WITH SAF-T-LOK™



6514B10FX
WITH SAF-T-LOK™



8016F10

Door Styles with Pull

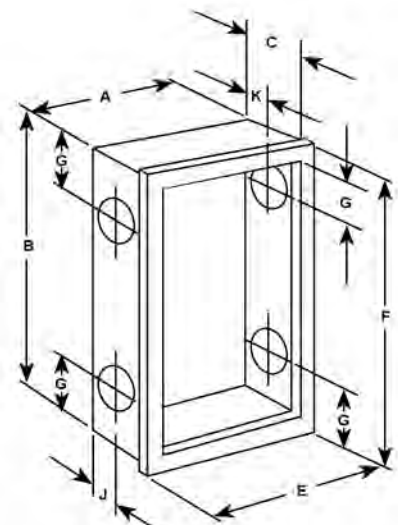
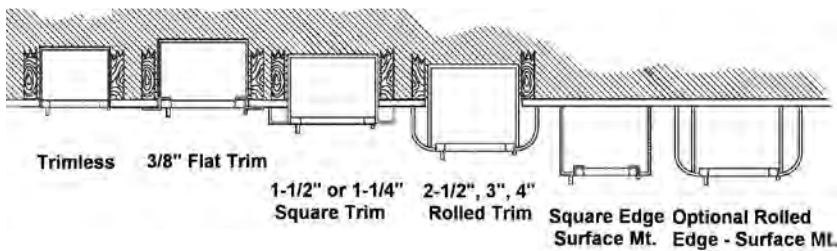
- F Full Glazing
- G Full Glazing & Saf-t-Lok™
- D Horizontal Duo Panel
- E Horizontal Duo Panel & Saf-T-Lok™
- S21 Solid
- L22 Solid with SAF-T-LOK™
- L24 Solid with Cylinder Lock & No Handle
- B10 Solid with Acrylic Insert & Saf-T-Lok™
- V Vertical Duo
- W Vertical Duo & Saf-T-Lok™
- A Center Duo Panel with Saf-T-Lok™

Door Glazing

- 10 Clear Acrylic
- 13 Clear Wire Glass
- 15 Bronze Acrylic
- 16 Gray Acrylic
- 18 Laminated Safety Glass

Options at Additional Cost

- Aluminum Tub for Non-Rated Use
- Vertical or Horizontal Lettering - Pg 21
- Futura Embossed "Fire" Handle in Mill, White or Red
- ADA Flush Pull
- Fire-FX® Fire-Rated Tub Option
- Stainless Steel Tub #4 Satin Finish
- Wall Signs & Labels - Pg 20
- Color Anodized Aluminum - Pg 24
- Optional Standard Color Frame/Door/Tub - Pg 24
- Custom Color Frame/Door/Tub - Pg 24
- Alarms - Pg 20
- Engraved Metal or Etched Glass Lettering Pg. 21
- Break Glass Hammer & Chain
- Custom Stainless Finishes # 6 Satin, #7 Polished, #8 Mirror



Knockouts: Hose Cabinet Knockouts for Recessed and Semi-Recessed Models:

Knockouts (K.O.s) are provided centered, one, side, top and bottom—other side offset, top and bottom. Cabinets with 6" depth will have K.O.'s centered. Trimless K.O.s centered only—no offset. For surface-mount cabinets knockouts are provided only when exact location is known.

K.O.s are not provided on FIRE-FX cabinets. Instructions for the knockouts in the field are provided and must be strictly adhered to maintain fire-rating.

FIRE HOSE AND VALVE CABINETS



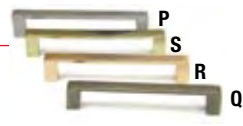
Trim and Door Material and Series Number				Tub I.D.			Frame O.D.		Wall Opening: Non-Rated			Wall Opening: Fire-Rated			K.O. Location			Recommended Hose Rack and Extinguishers
Steel	Aluminum	Stainless Steel	Trim Style	A	B	C	E	F	W	H	D	W	H	D	J	G	K	
Hose with Extinguisher or FD Valve Cabinets																		
6014	--	--	Trimless	24	30	6	24 1/4	30 1/4	24 1/2	30 1/2	6 1/4	--	--	--	2 1/2	4	2 1/2	HOSE RACK: 1- 1/2" x 1-1/2" Hose Rack Unit -50 or 75' Hose (3005, 3105, 3007, 3107) plus 5 lb Extinguisher
6015	6025	6035	Flat Trim	24	30	6	27 3/8	33 3/8	25	31	5 3/4	26	32 1/8	6 5/8	2 1/2	4	2 1/2	
6016	6026	6036	1 1/4" Square	24	30	6	27 3/8	33 3/8	25	31	4 7/8	26	32 1/8	5 3/4	2 1/2	4	2 1/2	
6017	6027	6037	2 1/2" Rolled	24	30	6	27 3/8	33 3/8	25	31	3 5/8*	26	32 1/8	4 1/2*	Specify When Ordering			plus 5 lb Extinguisher
6013	6023	6039	Surf. Mtd.	27 3/16	33 3/16	6 1/2	27 3/8	33 3/8	--	--	--	--	--	--	Upon Request			
6214	--	--	Trimless	24	34 3/4	6	24 1/4	35	24 1/2	35 1/4	6 1/4	--	--	--	2 1/2	4	2 1/2	
6215	6225	6235	Flat Trim	24	34 3/4	6	27 3/8	38 1/8	25	35 3/4	5 3/4	26	36 7/8	6 5/8	2 1/2	4	2 1/2	HOSE RACK: 1- 1/2" x 1-1/2" Hose Rack Unit - 100" Hose (3010 or 3110) plus 5 lb Extinguisher
6216	6226	6236	1 1/4" Square	24	34 3/4	6	27 3/8	38 1/8	25	35 3/4	4 7/8	26	36 7/8	5 3/4	2 1/2	4	2 1/2	
6217	6227	6237	2 1/2" Rolled	24	34 3/4	6	27 3/8	38 1/8	25	35 3/4	3 5/8*	26	36 7/8	4 1/2*	2 1/2	4	2 1/2	
6213	6223	6239	Surf. Mtd.	27 3/16	37 15/16	6 1/2	27 3/8	38 1/8	--	--	--	--	--	--	Upon Request			
6114	--	--	Trimless	24	30	8	24 1/4	30 1/4	24 1/2	30 1/2	8 1/4	--	--	--	4	4	4	HOSE RACK: 2-1/2" x 1-1/2" Hose Rack Unit 50 or 75' Hose (3205, 3207)
6115	6125	6135	Flat Trim	24	30	8	27 3/8	33 3/8	25	31	7 3/4	26	32 1/8	8 5/8	4	4	2 1/2	
6116	6126	6136	1 1/4" Square	24	30	8	27 3/8	33 3/8	25	31	6 7/8	26	32 1/8	7 3/4	4	4	2 1/2	
6117	6127	6137	2 1/2" Rolled	24	30	8	27 3/8	33 3/8	25	31	5 5/8*	26	32 1/8	6 1/2*	4	4	2 1/2	Upon Request
6113	6123	6139	Surf. Mtd.	27 3/16	33 3/16	8 1/2	27 3/8	33 3/8	--	--	--	--	--	--	Upon Request			
6414	--	--	Trimless	24	34 3/4	8	24 1/4	35	24 1/2	35 1/4	8 1/4	--	--	--	4	4	4	
6415	6425	6435	Flat Trim	24	34 3/4	8	27 3/8	38 1/8	25	35 3/4	7 3/4	26	36 7/8	8 5/8	4	4	2 1/2	HOSE RACK: 2-1/2" x 1-1/2" Hose Rack Unit 100" Hose (3210 Series)
6416	6426	6436	1 1/4" Square	24	34 3/4	8	27 3/8	38 1/8	25	35 3/4	6 7/8	26	36 7/8	7 3/4	4	4	2 1/2	
6417	6427	6437	2 1/2" Rolled	24	34 3/4	8	27 3/8	38 1/8	25	35 3/4	5 5/8*	26	36 7/8	6 1/2*	4	4	2 1/2	
6413	6423	6439	Surf. Mtd.	27 3/16	37 15/16	8 1/2	27 3/8	38 1/8	--	--	--	--	--	--	Upon Request			
6614	--	--	Trimless	24	38 3/4	8	24 1/4	39	24 1/2	39 1/4	8 1/4	--	--	--	4	4	4	HOSE RACK: 2-1/2" x 1-1/2" Hose Rack Unit 125" Hose (3212 Series)
6615	6625	6635	Flat Trim	24	38 3/4	8	27 3/8	42 1/8	25	39 3/4	7 3/4	26	40 7/8	8 5/8	4	4	2 1/2	
6616	6626	6636	1 1/4" Square	24	38 3/4	8	27 3/8	42 1/8	25	39 3/4	6 7/8	26	40 7/8	7 3/4	4	4	2 1/2	
6617	6627	6637	2 1/2" Rolled	24	38 3/4	8	27 3/8	42 1/8	25	39 3/4	5 5/8*	26	40 7/8	6 1/2*	4	4	2 1/2	Upon Request
6613	6623	6639	Surf. Mtd.	27 3/16	41 15/16	8 1/2	27 3/8	42 1/8	--	--	--	--	--	--	Upon Request			
6314	--	--	Trimless	30	30	8	30 1/4	30 1/4	30 1/2	30 1/2	8 1/4	--	--	--	4	4	4	
6315	6325	6335	Flat Trim	30	30	8	33 3/8	33 3/8	31	31	7 3/4	32	32 1/8	8 5/8	4	4	2 1/2	HOSE RACK & FD VALVE OR EXTINGUISHER: 1-1/2" OR 2-1/2" Valve, 50' or 75' Hose Rack Unit - (Not Sentinel 15-20 Exting.)
6316	6326	6336	1 1/4" Square	30	30	8	33 3/8	33 3/8	31	31	6 7/8	32	32 1/8	7 3/4	4	4	2 1/2	
6317	6327	6337	2 1/2" Rolled	30	30	8	33 3/8	33 3/8	31	31	5 5/8*	32	32 1/8	6 1/2*	4	4	2 1/2	
6313	6323	6339	Surf. Mtd.	33 3/16	33 3/16	8 1/2	33 3/8	33 3/8	--	--	--	--	--	--	Upon Request			
6514	--	--	Trimless	32 3/4	34 3/4	8	33	35	33 1/4	35 1/4	8 1/4	--	--	--	4	4	4	HOSE RACK & FD VALVE OR EXTINGUISHER: 1-1/2" OR 2-1/2" Valve, 100" Hose Rack Unit
6515	6525	6535	Flat Trim	32 3/4	34 3/4	8	36 1/8	38 1/8	33 3/4	35 3/4	7 3/4	35	36 7/8	8 5/8	4	4	2 1/2	
6516	6526	6536	1 1/4" Square	32 3/4	34 3/4	8	36 1/8	38 1/8	33 3/4	35 3/4	6 7/8	35	36 7/8	7 3/4	4	4	2 1/2	
6517	6527	6537	2 1/2" Rolled	32 3/4	34 3/4	8	36 1/8	38 1/8	33 3/4	35 3/4	5 5/8*	35	36 7/8	6 1/2*	4	4	2 1/2	Upon Request
6513	6523	6539	Surf. Mtd.	35 15/16	37 15/16	8 1/2	36 1/8	38 1/8	--	--	--	--	--	--	Upon Request			
7214	--	--	Trimless	32 3/4	38 3/4	8	33	39	33 1/4	39 1/4	8 1/4	--	--	--	4	4	4	
7215	7225	7235	Flat Trim	32 3/4	38 3/4	8	36 1/8	42 1/8	33 3/4	39 3/4	7 3/4	35	40 7/8	8 5/8	4	4	2 1/2	HOSE RACK & FD VALVE OR EXTINGUISHER: 1-1/2" OR 2-1/2" Valve, 125" Hose Rack Unit
7216	7226	7236	1 1/4" Square	32 3/4	38 3/4	8	36 1/8	42 1/8	33 3/4	39 3/4	6 7/8	35	40 7/8	7 3/4	4	4	2 1/2	
7217	7227	7237	2 1/2" Rolled	32 3/4	38 3/4	8	36 1/8	42 1/8	33 3/4	39 3/4	5 5/8*	35	40 7/8	6 1/2*	4	4	2 1/2	
7213	7223	7239	Surf. Mtd.	35 15/16	41 15/16	8 1/2	36 1/8	42 1/8	--	--	--	--	--	--	Upon Request			
Fire Department Cabinets																		
8514	--	--	Trimless	18	18	8	18 1/4	18 1/4	18 1/2	18 1/2	8 1/4	--	--	--	4	9	4	FIRE DEPARTMENT VALVE 1-1/2" or 2-1/2" Fire Department Valve with Cap and Chain
8515	8525	8535	Flat Trim	18	18	8	21 3/8	21 1/8	19	19	7 3/4	20	20 1/8	8 5/8	4	9	2 1/2	
8516	8526	8536	1 1/4" Square	18	18	8	21 3/8	21 3/8	19	19	6 7/8	20	20 1/8	7 3/4	4	9	2 1/2	
8517	8527	8537	2 1/2" Rolled	18	18	8	21 3/8	21 3/8	19	19	5 5/8*	20	20 1/8	6 1/2*	4	9	2 1/2	Upon Request
8513	8523	8539	Surf. Mtd.	21 3/16	21 3/16	8 1/2	21 3/8	21 3/8	--	--	--	--	--	--	Upon Request			
8414	--	--	Trimless	18	18	10	18 1/4	18 1/4	18 1/2	18 1/2	10 1/4	--	--	--	5	9	5	
8415	8425	8435	Flat Trim	18	18	10	21 3/8	21 3/8	19	19	9 3/4	20	20 1/8	10 5/8	5	9	5	DUAL SIDE BY SIDE FIRE DEPARTMENT VALVE & EXTINGUISHER OR 2 FIRE DEPARTMENT VALVES: 1-1/2" or 2-1/2" Fire Department Valve with Cap and Chain Plus Any Extinguisher Except Sentinel 15-20
8416	8426	8436	1 1/4" Square	18	18	10	21 3/8	21 3/8	19	19	8 7/8	20	20 1/8	9 3/4	5	9	5	
8417	8427	8437	2 1/2" Rolled	18	18	10	21 3/8	21 3/8	19	19	7 5/8*	20	20 1/8	8 1/2*	5	9	5	
8413	8423	8439	Surf. Mtd.	21 3/16	21 3/16	10 1/2	21 3/8	21 3/8	--	--	--	--	--	--	Upon Request			
8714	--	--	Trimless	26	26	8	26 1/4	26 1/4	26 1/2	26 1/2	8 1/4	--	--	--	4	13	4	DUAL EXTINGUISHER CABINET WITH SHELF: Extinguisher or Fire Dept. Valve - Shelf located 12" from bottom of cabinet - Any Extinguisher Except Sentinel 15-20
8715	8725	8735	Flat Trim	26	26	8	29 3/8	29 3/8	27	27	7 3/4	28	28 1/8	8 5/8	4	13	2 1/2	
8716	8726	8736	1 1/4" Square	26	26	8	29 3/8	29 3/8	27	27	6 7/8	28	28 1/8	7 3/4	4	13	2 1/2	
8717	8727	8737	2 1/2" Rolled	26	26	8	29 3/8	29 3/8	27	27	*5 5/8	28	28 1/8	6 1/2*	4	13	2 1/2	Upon Request
8713	8723	8739	Surf. Mtd.	29 3/16	29 3/16	8 1/2	29 3/8	29 3/8	--	--	--	--	--	--	Upon Request			
8614	--	--	Trimless	26	26	10	26 1/4	26 1/4	26 1/2	26 1/2	10 1/4	--	--	--	5	13	5	
8615	8625	8635	Flat Trim	26	26	10	29 3/8	29 3/8	27	27	9 3/4	28	28 1/8	10 5/8	5	13	5	Upon Request
8616	8626	8636	1 1/4" Square	26	26	10	29 3/8	29 3/8	27	27	8 7/8	28	28 1/8	9 3/4	5	13	5	
8617	8627	8637	2 1/2" Rolled	26	26	10	29 3/8	29 3/8	27	27	7 5/8*	28	28 1/8	8 1/2	5	13	5	
8613	8623	8639	Surf. Mtd.	29 3/16	29 3/16	10 1/2	29 3/8	29 3/8	--	--	--	--	--	--	Upon Request			
8014	--	--	Trimless	16	40	9	16 1/4	40 1/4	16 1/2	40 1/2	9 1/4	--	--	--	4 1/4	6	4 1/4	DUAL EXTINGUISHER CABINET WITH SHELF: Extinguisher or Fire Dept. Valve - Shelf located 12" from bottom of cabinet - Any Extinguisher Except Sentinel 15-20
8015	8025	8035	Flat Trim	16	40	9	19 3/8	43 3/8	17	41	9	18	42 1/8	10	4 1/4	6	4 1/4	
8016	8026	8036	1 1/4" Square	16	40	9	19 3/8	43 3/8	17	41	8 1/8	18	42 1/8	9 1/8	4 1/4	6	4 1/4	
8017	8027	8037	2 1/2" Rolled	16	40	9	19 3/8	43 3/8	17	41	6 5/8*	18	42 1/8	7 1/2*	4 1/4	6	4 1/4	Upon Request
8013	8023	8039	Surf. Mtd.	19 3/16	43 3/16	9 1/2												



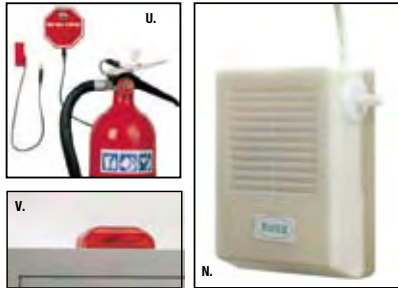
LOCKS & LOCK BOXES



PULLS



ALARMS



COMMANDER ALARM

Easy to install cabinet alarms protect against theft or tampering. The Commander Alarm (shown here) is an economical choice.

ACCESSORIES

- A. Security lock box 4" x 6" x 2 1/2"
- B. Security lock box alarm cover 6" x 6" x 2 1/2"
- C. LBLA16 lockbox L.A.F.D. with red decal, 16 gauge, 5" x 5" x 1 1/2" approved lockbox for L.A. county
- D. Keyed-alike Abus padlock
- E. Samson brass keyed-alike padlock
- F. Break glass lock lever assembly LL24-KIT
- G. Fire department lock box 4" x 6" x 1 1/2"
- H. Breaker bar with chain
- L. Futura "FIRE" handle
- M. ADAC flush pull handle
- N. Commander Alarm
- O. Standard zinc pull (PUS)
- P. Chrome pull
- Q. US10B pull
- R. Bronze pull
- S. Brass pull
- T. Lever Handle
- U. Brigadier alarm (BA)
- V. Strobe alarm (SA)

FIRE BLANKETS AND CABINETS

Fire Blankets & Cabinet: Royal fire blanket cabinets come in two basic designs. The Royal 9519S21 is a roller type for emergency use. The enclosed blanket is attached to the vertical roller and comes with arm loops to enable a person to wrap themselves in the blanket in one continuous motion. The Royal 9613S21 is a handy "drop" type with folded blanket. Both units are surface mounted. Each comes with a nominal 62" x 84", 3 1/2 pound, processed wool fire blanket, which meets the Flammable Fabrics Act: Flammability of Clothing Textiles, Title 16, CFR1610.



Blanket & Extinguisher Combination Cabinet

Door & Trim Construction: CRS with white powder-coat finish, #180 clear anodized aluminum or #4 stainless steel. Flush cabinet doors with a 5/8" door stop are attached by a continuous hinge and equipped with zinc-plated handle and roller catch. Full glass front with pull handle.

Trim Style & Depth: Recessed - 3/8" flat trim, Semi-recessed - 1-1/2" square trim, 2-1/2", 4" or 4-1/2" rolled edge, Surface-Mounted - square edge. 1-3/4" face trim on frame and doors.

Tub: CRS with white powder coat finish standard. Surface-mounted models have clear anodized aluminum tubs.

Glazing: Full front glazing .09 Acrylic.

Shelf: Shelf is located 9" from the top of the cabinet, providing storage of the blanket above the extinguisher.

Blanket: Each cabinet includes a nominal 62" x 84" x 3-1/2 lb, processed wool fire blanket which meets the Flammable Fabrics Act: Flammability of Clothing Textiles, Title 16, CFR21610.

Fire Rated Option Available: Yes

Options at Additional Cost:

- SAF-T-LOK™
- ADAC Flush Pull
- Futura "Fire" Handle in Red, White or Mill
- Lettering in Black or Red Pg. 21
- Color Painted Tub - Red or Black
- Color Painted Trim and Door Red or Black
- Color Anodizing for Aluminum Finishes Pg. 24
- Wall Signs, Labels & Alarms pg. 20-21



3616F10

TRIM & DOOR & SERIES #			TUB I.D.			FRAME O.D.			Wall Opening: Non-Rated			Wall Opening: Fire-Rated			ACCOMMODATES FOLLOWING EXTINGUISHERS	
Steel	Aluminum	Stainless	Trim Style	W	H	D	W	H	D	W	H	D	W	H		D
3615	3625	3635	Flat Trim	12"	36"	8"	15-3/8"	39-3/8"	8-1/8"	13"	37"	8"	14"	38"	9"	Any Cosmic, any Galaxy, Grenadier P, Sentinel 5, 10, any Mercury, any Saturn
3616	3626	3636	1-1/2" Square	12"	36"	8"	15-3/8"	39-3/8"	8-1/8"	13"	37"	6-3/4"	14"	38"	7-1/2"	
3617	3627	3637	2-1/2" Rolled	12"	36"	8"	15-3/8"	39-3/8"	8-1/8"	13"	37"	5-3/4"	14"	38"	6-1/2"	
3612	3622	3632	4" Rolled	12"	36"	8"	15-3/8"	39-3/8"	8-1/8"	13"	37"	4-1/4"	14"	38"	5"	
3618	3628	3638	4-1/2" Rolled	12"	36"	8"	15-3/8"	39-3/8"	8-1/8"	13"	37"	3-3/4"	14"	38"	4-1/2"	
3613	3623	3633	Surface-Mtd.	15 3/16"	39 3/16"	8"	15-3/8"	39-3/8"	8-1/8"	---	---	---	---	---	---	



DECALS AND DIE CUT LETTERING

DECALS		DIE CUT LETTERING & SIGNS	
1	Decal: 4" x 4" - red & white, WARNING #DRWF	16	Diecut: 3/4" x 18" - vertical, red, FIRE EXT #LDCVRFE
2	Decal: 4" x 8 3/4" - horizontal, black & red, FIRE HOSE #DFFH	16R	Diecut: 3/4" x 18" - vertical, red, in reverse FIRE EXT #LDCVRRFE
3	Decal: 2 1/4" x 4" - horizontal, black & red, BREAK GLASS #DRBGR	17	Diecut: 3/4" x 18" - vertical, white, FIRE EXT#LDCVWFE
4	Decal: 1 1/4" x 4" - horizontal, red & white, FIRE EXT. #DWFE	17R	Diecut: 3/4" x 18" - vertical, white, FIRE EXT in reverse #LDCVWRFE
5	Decal: 3" x 4" - horizontal, black & red, FIRE EXT. #DRFER	18	Diecut: 3/4" x 18" - vertical, black, FIRE EXT #LDCVBFE
6	Decal: 11 3/4" x 3 1/2" - vertical, red & white, FIRE EXT. #DRFA	18R	Diecut: 3/4" x 18" - vertical, black, in reverse FIRE EXT#LDCVBRFE
7	Decal: 1" x 4 1/4" - vertical, red & wht, IN CASE OF FIRE #PHCD-RED	19	Diecut: 2 1/4" x 7 3/4" - horizontal, red, FIRE EXT#LDCHRFE
8	Decal: 6" x 6" - octagonal, red, black & white, F.D. VALVE #FDVO	20	Diecut: 2 1/4" x 7 3/4" - horizontal, white, FIRE EXT#LDCHWFE
9	Decal: 4" x 9" - horizontal, black & red, FIRE HOSE #1403	21	Diecut: 2 1/4" x 7 3/4" - horizontal, black, FIRE EXT#LDCHBFE
10	Decal: 7 1/8" x 2 1/4" - horizontal, red & white, FIRE EXT. #LDHRFE	22	Plastic sign: 4" x 12" 3D angle FIRE EXTINGUISHER #22S
11	Decal: 7 1/8" x 2 1/4" - horizontal, FIRE EXT. #LDHWFE	23	Plastic sign: 4" x 18" 3D tent FIRE EXTINGUISHER #23S
12	Decal: 7 1/8" x 2 1/4" - horizontal, black & white, FIRE EXT. #LDHBFEE	24	Plastic sign: 5" x 6" 3D tent FIRE EXTINGUISHER #24S
13	Decal: 2" x 19" - vertical, red/clear FIRE EXT. #LDVRFEE	25	Plastic sign: 4" x 12" flush vertical FIRE EXT #25S
14	Decal: 2" x 19" - vertical whit/clear FIRE EXT. #LDVWFE	26	Diecut: 7 7/8" x 1" - horizontal, red, FIRE BLANKET #DCHRFB
15	Decal: 2" x 19" - vertical black/clear FIRE EXT. #LDVBFEE	27	Diecut: 10 1/4" x 4 3/8" - horizontal, red FD VALVE #DCHFDV-R
28. Etched lettering in glass or engraved lettering in metal. Available with optional color fill as shown above.			

PROJECT SHOWCASE



Advocate Lutheran General Hospital – Park Ridge, IL
American Embassy – Kathmandu Nepal
Anaheim Convention Center - Anaheim, CA
Baltimore Hilton – Convention Center – Baltimore MD
Caesar's Palace Forum Ship - Las Vegas, NV
California Adventure - Ultra Flight - Anaheim, CA
Celebration Place - Celebration, FL
City Place Complex - Hollywood, FL
Disney Animal Kingdom Resort - Orlando, FL
Disney's All-Star Resort - Anaheim, CA
Federal Courthouse - Boston, MA
First of America Corporation - Kalamazoo, MI
First Union Operations Bldg Soka Univ. - Los Angeles, CA
Georgia State University – Atlanta, GA
Gulf Place - Fort Walton Beach, FL
Hazeltine National Golf Club Clubhouse – Chaska, MN
Highwoods Preserve - Tampa, FL
Johns Hopkins Clinical Building – Baltimore, MD
Lexington On The Green - Lithonia, GA

MaCarran Airport – Las Vegas, NV
Medtronic Headquarters Campus - Mounds View, MN
Miami Dade Homestead Motor Sports Complex - Homestead, FL
Minnesota Correctional Facilities - Faribault and Sandstone, MN
Nationals Park (Washington Nationals) – Washington DC
Nissan North America Headquarters - Franklin, TN
Premier Automotive Group - Irvine, CA
Regatta At Vanderbilt Beach - Naples, FL
Sportsplex/Natatorium - Laurel, MS
St.Jude Medical Center Addition - Memphis, TN
Target Field – Minneapolis MN
TD Ameritrade Park – Omaha NE
TCF Bank Stadium, University of Minnesota – Minneapolis, MN
The Pentagon – Washington, DC
UCLA Medical Center – Los Angeles, CA
University of Florida Student Union Building - Orlando, FL
Whitehead Research Facility, Emory University - Fort Stewart, GA
Willowbrook Hospital – Cumberland, MD

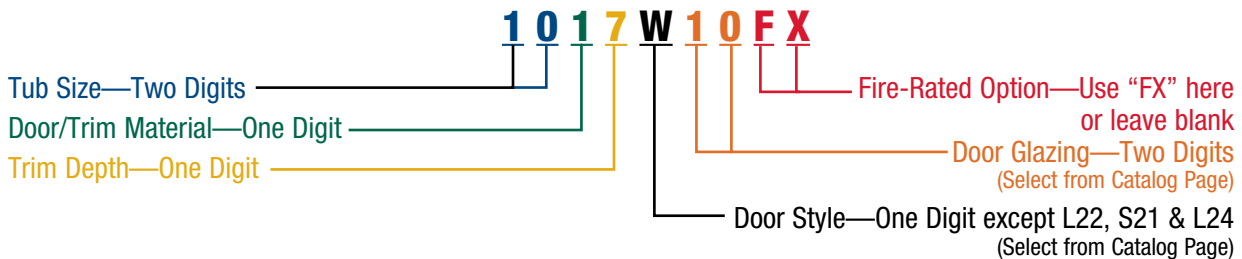


KEY TO CABINET NUMBER SYSTEM



Recessed Tub Size (I.D.)		Door/Trim Material		Trim Depth	
15	10 1/2 x 24 x 4	1	Steel, white primer finish	2	Semi-Recessed 4" rolled edge (ADAC flush pull)
17	10-1/2 x 24 x 5	2	Aluminum, #180 clear satin anodized finish	3	Surface Mount (4", 6", 8" or 9"), square edge for steel and aluminum
18	10 1/2 x 24 x 5 1/2	3	Stainless Steel, #4 satin finish	4	Trimless (install before wallboard)
10 & 12	10 1/2 x 24 x 6	4	Bronze, US 10 satin clear coated finish	5	Full recessed 5/16", square edge
11	9 x 18 x 4 11/16	5	Brass, US 3 polished coated finish	6	Semi-recessed 1 1/4", 1 1/2", square edge
20	12 x 27 x 7 3/4	7	US4 Satin Brass (priced on application)	7	Semi-recessed 2 1/2" or 3" rolled edge
25	14 x 30 x 4	8	US10B Oil-rubbed Bronze (priced on application)	8	Semi-recessed 4 1/2", rolled edge
30	16 x 32 x 7 3/4	9	Color Anodizing on Aluminum (priced on application)	9	Surface mount 4", 6", 8" or 9" rolled edge for stainless steel or steel. (May be a special order item)
36	12 x 36 x 8	Note: Bronze and brass are not available in 40, 45, or 58 tub sizes. Special materials and finishes are available. Contact JL with your special requirements.		Note: Bronze and brass are not available in # 8, 9 or 2 trim depths.	
40	20 x 27 x 7 3/4				
45	28 x 30 x 4				
55	18x18x7-3/4				
56	10 1/2 x 24 x 5 1/2				
57	16 x 32 x 7 3/4				
58	32 x 32 x 7-3/4				
59	16 x 40 x 8-3/4				
60	24 x 30 x 6				
61	24 x 30 x 8				
62	24 x 34 3/4 x 6				
63	30 x 30 x 8				
64	24 x 34 3/4 x 8				
65	32 3/4 x 34 3/4 x 8				
66	24 x 38 3/4 x 8				
72	32 3/4 x 38 3/4 x 8				
80	16 x 40 x 9	*Note: For surface mount cabinets, add 3 3/16" to width and height measurements. See product page for wall opening dimensions			
81	9 x 18 x 5 1/2				
84	18 x 18 x 10				
85	18 x 18 x 8				
86	26 x 26x 10				
87	26 x 26 x 8				

Door Style		Door Glazing	
B10	Solid with acrylic insert and SAF-T-LOK™ with pull handle	10	Clear acrylic
D	Duo panel with pull handle	13	Clear wire
E	Duo panel with SAF-T-LOK™ with pull handle	15	1/4" bronze acrylic
F	Full glass with pull handle	16	1/4" gray acrylic
G	Full glass with SAF-T-LOK™ with pull handle	17	Clear tempered glass
L22	Solid with lock, no glazing and pull handle	18	Clear safety glass
S21	Solid with pull handle, no glazing (except Embassy)	25	Clear Bubble - Clear Vu, SMB, RBC
L24	Solid with cylinder lock & no pull handle	26	Red Bubble - Clear Vu, SMB, RBC
V	Vertical Duo Panel with pull handle (except Embassy)	27	Bronze Bubble - Clear Vu, SMB, RBC
W	Vertical Duo Panel with SAF-T-LOK™ with pull handle		
Panorama Door Styles Below		Panorama Glazing Styles Below	
P	Colored acrylic for Panorama, with pull handle	40	3/16" Black acrylic with white "V" letter
Q	Colored acrylic for Panorama, with SAF-T-LOK™	41	3/16" Red acrylic with white "V" letter
		42	3/16" White acrylic with black "V" letter
		43	3/16" White acrylic with red "V" letter
		45	3/16" Black acrylic with white "H" letter
		46	3/16" Red acrylic with white "H" letter
		47	3/16" White acrylic with black "H" letter
		48	3/16" White acrylic with red "H" letter
		50	3/16" Black acrylic with white "A" letter
		51	3/16" Red acrylic with white "A" letter
		52	3/16" White acrylic with black "A" letter
		53	3/16" White acrylic with red "A" letter
C	Clear acrylic for Panorama, frameless	70	Clear 3/16" acrylic with pull handle
		71	Clear 3/16" acrylic with SAF-T-LOK™



OPTIONAL METAL FINISHES



OPTIONAL POWDERCOAT PAINT COLORS

RED (R)	BLACK (BK)	BRONZE (B)	BRASS (BRA)	SAND (S)	SC BEIGE (SB)	LIGHT ANODIZED
SATIN ALUMINUM (SA)	GRAY HAMMERTONE (GH)	WHITE (W)	AMS BEIGE (AB)	ORANGE (O)	SAFETY YELLOW (Y)	MEDIUM ANODIZED

PLEASE REFER TO PRODUCT PAGE TO SEE WHICH COLOR OPTIONS ARE AVAILABLE

ANODIZED ALUMINUM

DARK ANODIZED



MANUFACTURING/WAREHOUSING LOCATIONS



ACPG NORTHWEST
WAREHOUSE
RENTON, WA



ACPG CHICAGO
WAREHOUSE
WOOD DALE, ILLINOIS

ACPG HEADQUARTERS
JL INDUSTRIES
4450 W. 78TH STREET CIRCLE, BLOOMINGTON, MN 55435
E-MAIL: SALES@JLINDUSTRIES.COM
WEB SITE: WWW.JLINDUSTRIES.COM

ACPG EAST COAST
WAREHOUSE
LANCASTER, PENNSYLVANIA



ACPG WEST COAST
SAMSON PRODUCTS
6285 RANDOLPH STREET, COMMERCE, CA 90040
E-MAIL: SALES@SAMSONPRODUCTS.COM
WEB SITE: WWW.SAMSONPRODUCTS.COM

ACPG SOUTH
WAREHOUSE
DALLAS, TEXAS

ACPG ATLANTA
WAREHOUSE
ATLANTA, GEORGIA



ACPG SOUTHEAST
THOMAS ENTERPRISES
5765 CORPORATION CIRCLE, FORT MYERS, FL 33905
E-MAIL: SALES@THOMASE.COM
WEB SITE: WWW.THOMASE.COM

CONTACT US: 800-554-6077 FAX: 952-835-2218

The Activar Construction Products Group (ACPG) consists of 5 affiliated companies that serve the commercial construction industry. Our multiple product lines are a single source for architects and distributors. Air Louvers manufactures products for the openings market with door lites, louvers and rated-glass. Hiawatha is known for its quality architectural door hardware and frameless shower door products. JL Industries is an industry leader in fire protection, providing fire extinguishers, AEDs and cabinets, access panels, roof opening products and entrance flooring systems. Samson Products manufactures many of the products sold under the JL label and distributes JL products on the West Coast. Thomas Enterprises is our Southeast distributor for JL products and has a state-of-the-art aluminum fabrication facility for fire extinguisher cabinets sold under the Thomas and JL labels.



JL INDUSTRIES

ROOF ACCESSORIES



Division 07 72 33

**Roof Hatches
Roof Safety Rails
Safety Posts**

Division 07 72 36

Smoke Vents

ACTIVAR
INC.

www.activar.com

Construction Products Group



ROOF HATCHES & SAFETY RAILINGS

ROOF HATCH: Galvanized Steel or Aluminum RHG & RHA Series



Certifications: **RHG** (galvanized) models include components or materials that are ASTM certified under Specifications A792/A792M-06a; A653/A653M-06a; C726-05; and A36/A36M-05. **RHA** (aluminum) models include components or materials that are ASTM certified under Specifications 209-06 and C726-05.

Load/Deflection: Both steel and aluminum roof hatch covers have been tested and approved to support a minimum live load of 40 lbs./ft.² with a maximum deflection of 1/150th of the span, maximum negative load of 50 lbs./ft.² wind uplift, and 110 mph wind load when cover is in an open position.

Insulation: The curb includes a 1" fiberboard insulation surrounding the base, and 1" mineral wool insulation between the exterior cover and liner.

Construction: **RHG:** 14 gauge galvanized steel with 12" high curb and 3 5/8" wide flange for securing to roof deck. The cover includes a 14 gauge galvanized steel exterior and 22 gauge liner with with a TPE draft seal gasket door seal. **RHA:** .090 aluminum with 12" high curb and 3 5/8" wide flange for securing to roof deck. The cover includes a .090 aluminum exterior and .040 aluminum liner with a TPE draft seal gasket door seal.

Hardware: Hardware includes a heavy duty hinge, slam latch, heavy gauge automatic hold open arm with red grip, compression spring-operated cylinder, exterior handle with integral padlock hasp, and interior locking handle with interior padlock hasp.

Finish: **RHG:** Bonderite®, pre-treated grey hammertone powder coat. **RHA:** Bonderite®, pre-treated bronze powder coat.

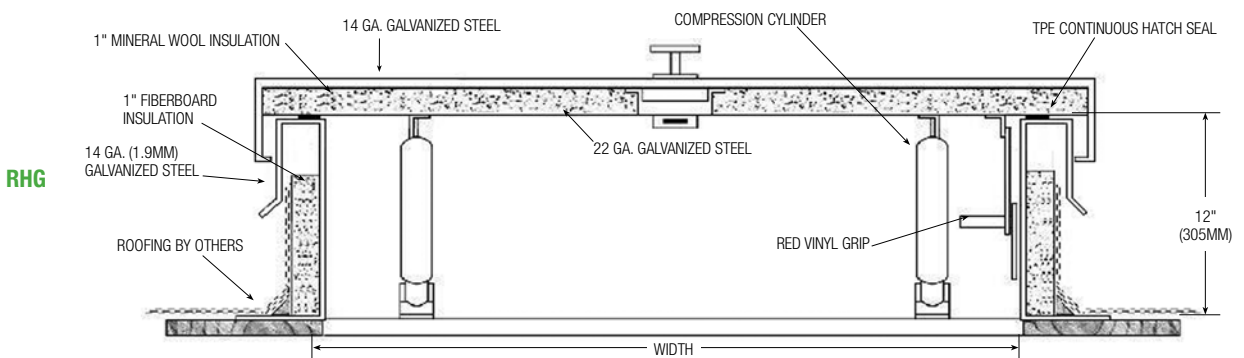
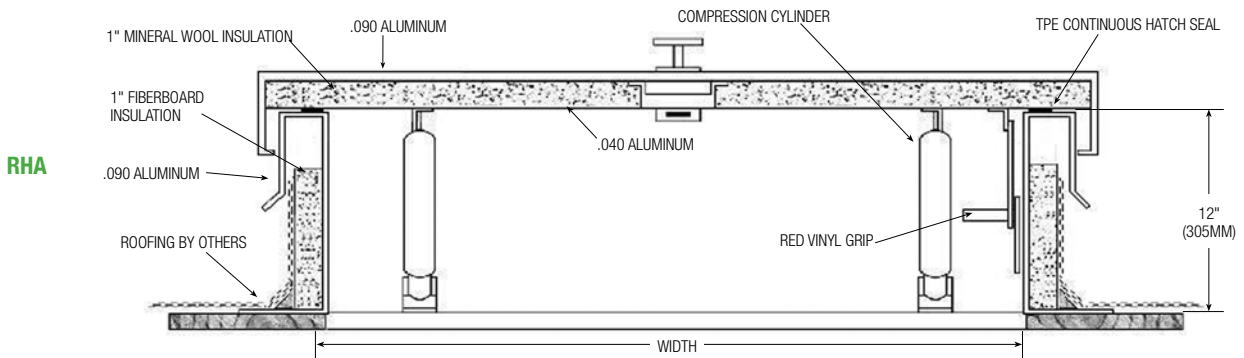
Options: Saf-T-Hatch Safety Railing, Gravity-operated battery-powered flashing warning light, LP-4,5 or 6 ladder post.

Model	Opening Size	Weight
RHA-1	30" x 36"	90 lbs.
RHA-2	54" x 30"	115 lbs.
RHA-3	96" x 30"	190 lbs.
RHA-4	36" x 36"	110 lbs.
RHA-5	48" x 48"	160 lbs.

Custom Sizes Available Upon Request

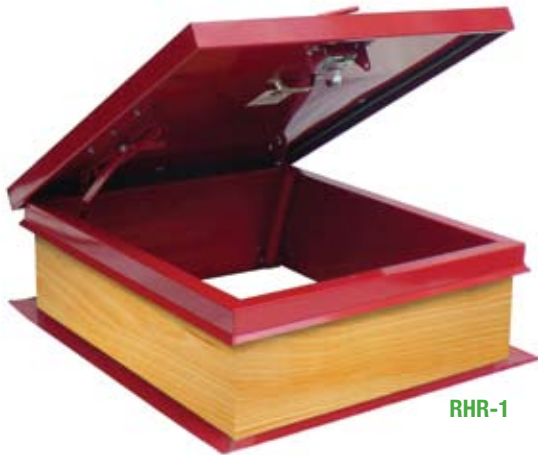
Model	Opening Size	Weight
RHG-1	30" x 36"	150 lbs.
RHG-2	54" x 30"	210 lbs.
RHG-3	96" x 30"	315 lbs.
RHG-4	36" x 36"	185 lbs.
RHG-5	48" x 48"	260 lbs.

Custom Sizes Available Upon Request





RETROFIT GALVANIZED ROOF HATCH: RHR Series



RHR-1

Load/Deflection: Roof hatch cover has been tested and approved to support a minimum live load or 40 lbs/ft² with a maximum deflection of 1/150th of the span.

Insulation: The curb includes 1" x 11" pine board surrounding the base. The cover has 1" mineral wool insulation in the space between the exterior cover and liner.

Certifications: The RHR includes components or materials that are ASTM certified under Specifications A792/A792M-06a; A653/A653M-06a; C726-05; and A36/A36M-05.

Construction: Hatch is 16 gauge galvanized steel with 12" high curb and 3-5/8" wide flange for securing to roof deck. The cover includes a 16 gauge galvanized steel exterior and 22 gauge liner with an EPDM gasket door seal.

Hardware: Hardware includes a heavy-duty hinge, heavy-gauge automatic hold-open arm with red grip, compression spring-operated cylinders, rubber-coated exterior handle with integral padlock hasp and interior latching handle with padlock hasp.

Finish: Bonderite™ red powder coat.

Options: Gravity-operated battery-powered flashing warning light, Saf-T-Hatch safety rail (STH-1).

Model	Opening Size	Weight
RHR-1	30" x 36"	137 lbs.

Custom Sizes Available Upon Request

- Economical Roof Hatch Replacement
- 16 Gauge Galvanized Steel Construction
- RHG Series Features & Hardware
- Meets Industry Test Standards
- Bonderite™ Pre-Treated Red Hammertone powder coat
- No Painting Necessary
- Ready for Installation
- Custom Sizes Available

SAF-T-HATCH ROOFTOP SAFETY RAILING FOR NEW & EXISTING HATCHES: STH Series (Patented Saf-T-Hatch Railing)



Certifications: Meets OSHA required compliance for safe egress and ingress through rooftop hatch openings while hatch is in use. Complies with OSHA CFR 29-1910.232 and CFR 29-1910.27.

Construction: Rail: 1-5/8" OD A53 grade B seamed galvanized steel with zinc-plated post caps. The base is factory galvanized 2" x 2" 16 gauge seamed steel with cast steel hot dipped galvanized clamps.

Guard: Zinc-plated 3/16" ASTM chain with quick links and hoops.

Finish: Safety Yellow Powder Coating.

Installation: Quickly installs by a clamping frame around curb base of roof hatch or fire hatch. Does not require "approved" installer. Fits all brands of existing roof hatches with cap flashing—field adjustable to fit flashing size.

Options: Self-closing, rigid steel gate painted safety yellow, - STHG-24 fits RH1,2,3 Models (17 lbs) and STHG-36 fits RH4 & 5 Models (20 lbs).

Model	Opening Size	Weight	Fits Roof Hatch Model
STH-1	30" x 36"	66 lbs.	RHA/RHG/RHR-1
STH-2	54" x 30"	70 lbs.	RHA/RHG-2
STH-3	96" x 30"	80 lbs.	RHA/RHG-3
STH-4	36" x 36"	68 lbs.	RHA/RHG-4
STH-5	48" x 48"	75 lbs.	RHA/RHG-5

Custom Sizes Available Upon Request

ROOF HATCHES & SAFETY RAILINGS

SAF-T-HATCH RAIL SYSTEM: RHG-STH Series JL RHG Series Roof Hatch with Safety Rail



RHG-1-STH

- **Integral Roof Access Safety System**
- **OSHA-Compliant for Rooftop Safety**
- **4 Standard Sizes - Custom Sizes Available**
- **Durable, Powder Coat Factory Finish**
- **No Painting Required - Installation Ready**
- **Safety Rail Assembles Easily in Minutes**
- **Assembly Tools & Hardware Included**
- **Roof Hatch with Railing Sold as One Unit**
- **Optional Gate & "Open Hatch" Warning Light**
- **Factory-installed Mounting Brackets**

SAFETY RAIL: Model STH

Certifications: Rail meets OSHA-required compliance for safe egress and ingress through rooftop hatch openings while hatch is in use. Complies with OSHA CFR 29-1910.232 and CFR 29-1910.27.

Construction: Rail is 1-5/8" OD A53 grade B seamed galvanized steel with zinc-plated post caps. Rail support brackets are welded to the curb. Posts are mechanically-secured to the brackets.

Hardware: Safety chain is zinc-plated 3/16" ASTM chain with quick links and hoops.

Finish: Durable Safety Yellow powder coat finish.

Options: Rigid galvanized self-closing gate. Gravity-operated Roof Hatch "Open" warning light.

GALVANIZED ROOF HATCH: Model RHG

Certifications: RHG models include components or materials that are ASTM certified under Specifications A792/A792M-06a; A653/A653M-06a; C726-05 and A36/A36M-05)

Load/Deflection: Roof hatch cover has been tested and approved to support a minimum live load or 40 lbs/ft² with a maximum deflection of 1/150th of the span, maximum negative load of 50 lbs/ft² wind uplift, and 110 mph wind load when cover is in upright position.

Insulation: The curb includes 1" fiberboard insulation surrounding the base. The cover has 1" fiberglass insulation in the space between the exterior cover and liner.

Construction: Hatch is 14 gauge galvanized steel with 12" high curb and 3 5/8" wide flange for securing to roof deck. The cover includes a 14 gauge galvanized steel exterior and 22 gauge liner with an EPDM gasket door seal.

Hardware: Hardware includes a heavy-duty hinge, heavy-gauge automatic hold-open arm with red grip, compression-operated shock-absorbing cylinders, exterior handle with integral padlock hasp and interior latching handle with padlock hasp. Pre-installed bolts on the counter flashing assist in retaining the membrane materials against the curb.

Finish: Hatch - Bonderite™ pre-treated gray hammertone powder coat.

Options: Gravity-operated battery-powered flashing warning light.

Model	Opening Size	Weight
RHG-1-STH	30" x 36"	183 lbs.
RHG-2-STH	54" x 30"	245 lbs.
RHG-4-STH	36" x 36"	219 lbs.
RHG-5-STH	48" x 48"	298 lbs.
Custom Sizes Available Upon Request		



DOUBLE LEAF SMOKE VENT: UFV Series UL-LISTED

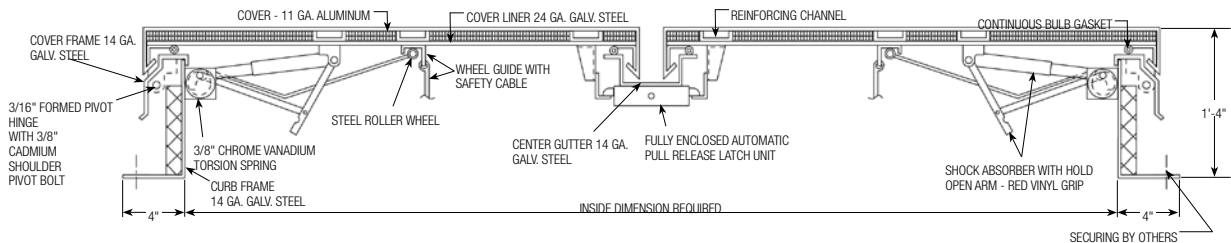
Certifications: UL Listed. The smoke vents are equipped with a UL listed 165° F fusible link for automatic operation.

Construction: Covers are 11 gauge aluminum insulated with fiberglass, 14 gauge galvanized steel curb and curb frame fully welded and ground smooth, gasketed and insulated for weather tightness.

Operation: Torsion spring drives open the covers automatically. Shock absorbers control the speed of the leaves as they open. The fusible link can be quickly and easily replaced.

Hardware: Heavy gauge aluminum 3/16" pivot hinges. Pull handles are provided for exterior or interior manual operation.

Finish: 2 coats of factory-applied primer.



Clear Opening Size	48" x 48"	48" x 72"	48" x 90"	48" x 96"	60" x 60"	60" x 96"			
UL-Listed	UFV-1	UFV-2	UFV-3	UFV-4	UFV-5	UFV-6			
F									

Custom Sizes Available Upon Request • Fusible Links with Higher Temperature UL-Listings Available Upon Request

DOUBLE LEAF DOMED SMOKE VENT: UDFV Series

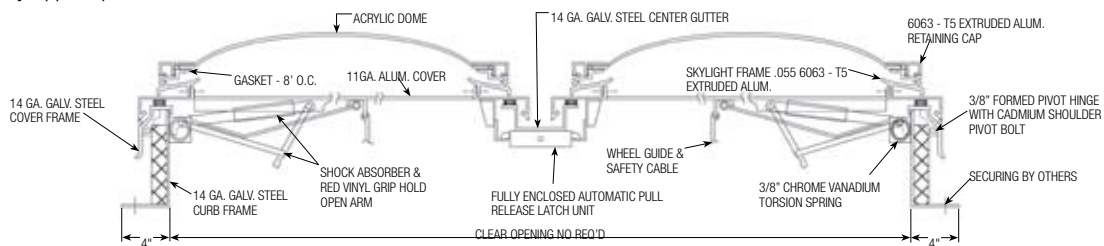
Certifications: The smoke vents are equipped with a UL listed 165° fusible link for automatic operation.

Construction: Dome frame is a minimum thickness of .072 aluminum and provides a self-contained sloping condensation and weepage gutter for drainage. Covers are one-piece acrylic dome (either white translucent or clear). The 14 gauge galvanized steel dome retaining frame is secured to the 14 gauge galvanized steel curb frame. The galvanized steel curb and curb frame are fully welded and ground smooth, gasketed and, insulated for weather tightness.

Operation: Torsion spring drives open the covers automatically. Shock absorbers control the speed of the leaves as they open. The fusible link can be quickly and easily reset and a new link inserted.

Hardware: Heavy gauge aluminum 3/16" pivot hinges. Pull handles are provided for exterior or interior manual operation.

Finish: 2 coats of factory-applied primer.



Clear Opening Size	48" x 48"	48" x 72"	48" x 90"	48" x 96"	60" x 60"	60" x 96"			
UL LISTED	UDFV-1	UDFV-2	UDFV-3	UDFV-4	UDFV-5	UDFV-6			

Custom Sizes Available Upon Request • Fusible Links with Higher Temperature UL-Listings Available Upon Request

EQUIPMENT HATCHES



EQUIPMENT HATCH: EHA & EHG Series

Insulation: The lid has 1" fiberglass insulation in the space between the exterior cover and liner.

Construction: Hatch is 14 gauge galvanized steel (EHG) or .090 aluminum (EHA) fully welded and ground smooth for weather tightness. Includes 12" high curb and 4" wide flange for securing to roof deck. The cover includes a 14 gauge galvanized steel or .090 aluminum exterior and metal liner with a

continuous bulb-neoprene door seal. Oversize doors may be spliced.

Hardware: Hardware includes heavy-duty galvanized hinges, compression spring automatic hold-open and operating arms with red vinyl handlegrip. For models 7' or larger - adjustable torsion spring automatic hold-open is provided. Lid hardware has a 2 point universal spring latch, and exterior and interior handles with integral padlock.

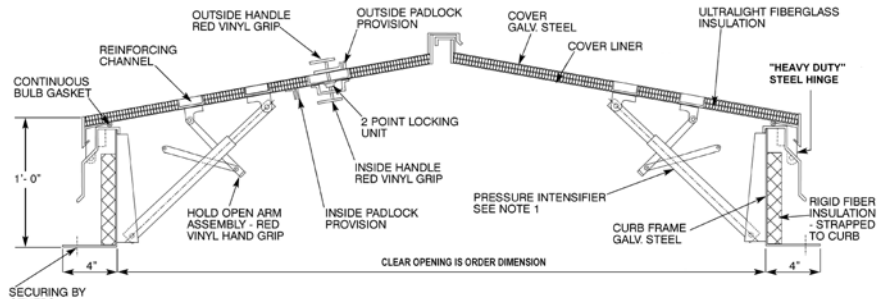
Finish: 2 coats prime coat.

Options: White Dome, Clear Dome. (RHWL) Gravity-operated battery-powered flashing warning light. (STH) Saf-T-Hatch railing. Custom Sizes & Finishes Available - Consult Factory.



Clear Opening Size	72" X 96"	60" X 120"	120" X 120"	144" X 144"
Aluminum	EHA-1	EHA-2	EHA-3	EHA-4
Galvanized	EHG-1	EHG-2	EHG-3	EHG-4

Custom Sizes Available Upon Request



DOMED EQUIPMENT HATCHES - DEHG & DEHA Series

Insulation: The lid has 1" fiberglass insulation in the space between the exterior cover and liner.

Construction: Curb and curb frame are 14 gauge galvanized steel or .090 aluminum, fully welded and ground smooth for weather tightness. Includes 12" high curb with rigid insulation and 4" wide flange for securing to roof deck. The lid includes a one piece dome (or multiples) of either white

translucent or clear colorless acrylic, a dome frame of extruded aluminum #6063-T5 with minimum thickness of .070 provided with a self-contained sloping condensation and weepage gutter for drainage. Lid construction is galva-nized steel or aluminum exterior with metal liner and continuous bulb gasket door seal. Oversize doors may be spliced.

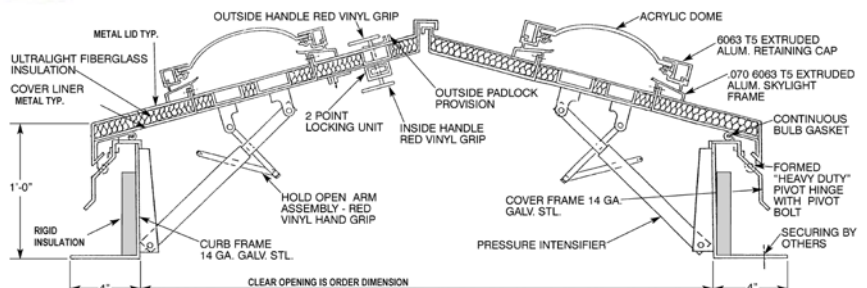
Hardware: Hardware includes heavy-duty galvanized hinges, compression spring automatic hold-open and operating arms with red vinyl handlegrip. For models 7' or larger - adjustable torsion spring automatic hold-open is provided. Lid hardware has a 2 point universal spring latch, and exterior and interior handles with integral padlock.

Options: White Dome, Clear Dome. (RHWL) Gravity-operated battery-powered flashing warning light. (STH) Saf-T-Hatch railing. Custom Sizes & Finishes Available - Consult Factory.



Clear Opening Size	72" X 96"	60" X 120"	120" X 120"	144" X 144"
Aluminum	DEHG-1	DEHG-2	DEHG-3	DEHG-4
Galvanized	DEHA-1	DEHA-2	DEHA-3	DEHA-4

Custom Sizes Available Upon Request



ACCESSORIES



OPTIONAL GATE FOR SAF-T-HATCH RAILINGS: STHG

Increase rooftop safety with a self-closing, rigid galvanized steel gate with spring hinge for JL's Saf-T-Hatch railings. Fits both stand-alone STH and integrated RHG-STH models. Safety yellow painted. Galvanized steel clamps.

Saf-T-Hatch	Gate	Weight
STH-1	STHG-24	17 lbs.
STH-2	STHG-24	17 lbs.
STH-3	STHG-24	17 lbs.
STH-4	STHG-36	20 lbs.
STH-5	STHG-36	20 lbs.

Custom Sizes Available Upon Request



ROOF HATCH WARNING LIGHT – RHWL

The warning light is designed to alert personnel that the roof top opening or hatch is in the open position. A very bright, red, xenon strobe light emitting 60 double flashes per minute is activated as soon as the hatch is lifted upward 30 degrees. The strobe automatically turns "Off" when the hatch is in the closed position. Installation & Operation: Mounted on the inside surface of the hatch with its magnetic base, the Model RHM-2P-R-S features a built-in tilt switch that is located in its battery compartment. This switch automatically triggers the strobe to its flashing mode when the hatch is lifted upward. Two (2) new D-Cell alkaline batteries provide 50-60 flashing hours. The "Hatch Alert" is not intended to replace roof top safety initiatives or Saf-T-Hatch rail systems but rather to be used in conjunction with them. The flashing signal is an additional alert that the hatch is open.



WARRANTY—All products carry a one year warranty after date of shipment against defects in materials and workmanship. We will replace or repair any product found defective within this period at our discretion. No other warranty express or implied is valid.

MANUFACTURING/WAREHOUSING LOCATIONS

VISA **MasterCard**

ACPG WEST COAST WAREHOUSE
RENTON, WASHINGTON

ACPG HEADQUARTERS
JL INDUSTRIES
4450 W. 78TH STREET CIRCLE, BLOOMINGTON, MN 55435
PHONE: 800-554-6077 FAX: 952-835-2218
E-MAIL: SALES@JLINDUSTRIES.COM
WEB SITE: WWW.JLINDUSTRIES.COM

ACPG CHICAGO WAREHOUSE
WOOD DALE, ILLINOIS

ACPG EAST COAST WAREHOUSE
LANCASTER, PENNSYLVANIA

ACPG ATLANTA WAREHOUSE
ATLANTA, GEORGIA

ACPG SOUTH WAREHOUSE
GRAND PRAIRIE, TEXAS

ACPG WEST COAST SAMSON PRODUCTS
6285 RANDOLPH STREET, COMMERCE, CA 90040
PHONE: 800-554-6077 FAX: 952-835-2218
E-MAIL: SALES@SAMSONPRODUCTS.COM
WEB SITE: WWW.SAMSONPRODUCTS.COM

ACPG SOUTHEAST THOMAS ENTERPRISES
5765 CORPORATION CIRCLE, FORT MYERS, FL 33905
PHONE: 800-780-7501 FAX: 239-693-7501
E-MAIL: SALES@THOMASE.COM
WEB SITE: WWW.THOMASE.COM

The Activar Construction Products Group (ACPG) consists of 5 affiliated companies that serve the commercial construction industry. Our multiple product lines are a single source for architects and distributors. Air Louvers manufactures products for the openings market with door lites, louvers and rated-glass. Hiawatha is known for its quality architectural door hardware and frameless shower door products. JL Industries is an industry leader in fire protection, providing fire extinguishers, AEDs and cabinets, access panels, roof opening products and entrance flooring systems. Samson Products manufactures many of the products sold under the JL label and distributes JL products on the West Coast. Thomas Enterprises is our Southeast distributor for JL products and has a state-of-the-art aluminum fabrication facility for fire extinguisher cabinets sold under the Thomas and JL labels.



Your Single Source for Fire Protection and Building Products



We're ready to help. *Just ask us!*



Fire Extinguisher Cabinets



Fire Extinguishers



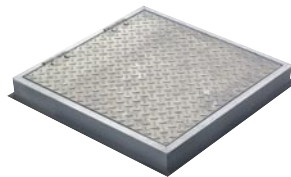
Metal Access Doors



Roof Hatches and Hatch Guards



Detention Specialties



Floor Doors



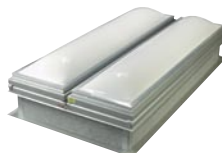
AEDs and Cabinets



Floor Gratings and Mats



Hose and Valve Cabinets



Domed Fire Vents

ACPG HEADQUARTERS

JL INDUSTRIES
4450 W. 78th Street Circle, Bloomington, MN 55435
Phone: 800-554-6077
Fax: 952-835-2218
e-mail: jl@jlindustries.com
Web Site: www.jlindustries.com

ACPG WEST COAST

SAMSON PRODUCTS
6285 Randolph Street, Commerce, CA 90040
e-mail: inquiry@samsonproducts.com
Web Site: www.samsonproducts.com

ACPG SOUTHEAST

THOMAS ENTERPRISES
5765 Corporation Circle, Fort Myers, FL 33905
e-mail: sales@thomase.com
Web Site: www.thomase.com

WAREHOUSES

Lancaster, PA
Atlanta, GA
Renton, WA
Wood Dale, IL
Grand Prairie, TX

LC50701 REV A



www.activar.com

Construction Products Group

