

Pearl®

2016 GENERAL CATALOG





Pearl

2016 GENERAL CATALOG

All specifications and availability subject to change without notice.

DRUM SETS

- 8-11 Masterworks
- 12-13 Reference
- 14-15 Reference Pure
- 16-19 Music City Custom
- 20-21 Masters Maple Reserve
- 22-23 Masters Maple Complete
- 24-25 Session Studio Classic
- 26-27 Wood-Fiberglass
- 28-29 Crystal Beat
- 30-31 Decade Maple
- 32-33 Export / Export Lacquer
- 34 Midtown
- 35 Roadshow
- 36-39 ePro & Accessories
- 40-43 Pearl Artists

SNARE DRUMS

- 44 Reference
- 45 Series Component
- 46 Free Floating
- 47 Hybrid Exotic
- 48 SensiTone
- 49 SensiTone Premium
- 50 Signature
- 51 Effect

HARDWARE

- 52-53 Demon Drive
- 52-53 Demon Chain
- 54-55 Eliminator Redline
- 56-57 P930 / P932
- 58-59 Hi-Hat Stands
- 60-61 Snare Stands
- 60-61 Drum Thrones
- 62-63 Boom/Straight Cymbal Stands
- 64-65 Racks & Tom Stands / Arms

PERCUSSION

- 66-67 Signature Congas & Bongos
- 68-69 Cajons & Accessories
- 70 Timbales
- 71 Cowbells
- 70-71 Frame Drums & Accessories
- 72 Djembes & Folkloric Percussion
- 73 Brazilian & Concert Percussion
- 74 Hand Percussion
- 75 Percussion Stands, Bags & Holders
- 76-77 Replacement Parts
- Back Configuration & Color Chart
- Cover

THE BEST WARRANTY IN THE INDUSTRY! *

COMMITTED TO THE HIGHEST LEVEL OF CUSTOMER SATISFACTION.

The Pearl Lifetime Warranty is a statement of confidence to our customers to the reliability of Pearl products. Pearl drums, stands and hardware are designed and manufactured to the highest standards in quality, style, appearance and playing performance. This lifetime warranty reflects a tradition of excellence and a commitment to superior engineering and craftsmanship dedicated to you, the drummer. The Pearl lifetime warranty is our pledge to you that we will proudly stand behind our product for as long as you own it. *Buy it once, play it for life.*



- Drum Set/Concert wood and metal shells for the Lifetime of the Original Owner.
- Foot pedals, hi-hat stands, cymbals stands, boom cymbal stands, snare drum stands, throne bases, floor-standing tom stands, floor-standing cymbal/tom stands, concert stands, racks and rack accessories, cymbal holders and multi-clamps for the Lifetime of the Original Owner. Some exceptions apply.
- Drum Set claws, tension rods, swivel nuts, spurs, tom brackets, tom holders, strainers, and nuts and bolts for the Lifetime of the Original Owner.
- Rotationally molded cases for the Lifetime of the Original Owner.
- The LIFETIME WARRANTY applies to the aforementioned Pearl products purchased from June 15, 2009.

* This warranty is valid only in the United States and excludes the Crystal Beat and Roadshow Series.



From our humble beginnings in 1946 to our worldwide network of drums and drummers 70 years later, Pearl's family owned-and-operated tradition of innovation and personal service continue forward to give a percussive voice to every player.

Here are some highlights of our seven decade journey:



- April 2, 1946:** Katsumi Yanagisawa starts Pearl with two employees in 300 sq. ft. factory in Sumida, Japan, making music stands and accessories.
- 1950:** Recognizing an emerging market, Katsumi shifts focus to manufacturing drums.
- 1953:** Pearl Musical Instruments enjoys rapid growth in Japan, expanding to over 30 employees for producing basic drum sets, marching and concert drums, and accessories.
- 1957:** Katsumi's eldest son Mitsuo forms an export division to meet international demand.
- 1961:** Pearl expands by building a 15,000 sq. ft. manufacturing facility in Chiba, Japan. Pearl World Headquarters remains in Chiba to this day.
- 1965:** Pearl's long-range plan to increase in product variety and development includes a new series of professional drum sets, expanded worldwide distribution, and unparalleled support.
- 1966:** President Series professional drums are launched in Japan. Their unique Phenolic shell design and sound catch the ear of touring pro's such as Art Blakey and JC Heard.
- 1973:** Pearl expands drum production to a second 93,000 sq.ft. production facility in Taichung, Taiwan. Wood-Fiberglass hybrid drums are debuted, and Pearl USA opens in Nashville, TN.
- 1974:** Crystal Beat seamless acrylic drums are introduced. Pearl USA welcomes a host of high-profile artists including Peter Criss, Louis Bellson, Ed Shaughnessy, and Larrie Londin.
- 1976:** Pearl develops its first all Maple drum kit, the Giant Step, for the Japanese market.
- 1977:** Peter Criss tours the Pearl drum factory in Chiba during KISS' first tour of Japan.
- 1978:** Giant Step series expands with fiberglass-lined Maple drums, solidifying Pearl's reputation as a top percussive innovator. The Patented Vari-Set gearless tom holder is released.
- 1979:** Pearl advances electronic percussion with the introduction of the Syncussion SY1 drum synthesizer.
- 1981:** Pearl introduces its "Blues Flavor" series drums featuring 100% Birch shells.
- 1982:** "Toto IV" is released with new Pearl artist Jeff Porcaro on the drums. Phil Collins debuts "In the Air Tonight" live behind his new Pearl all Birch kit.
- 1983:** USA-made Criterion Marching Drums signal Pearl's first entry in marching percussion. The Free-Floating Snare Drum and the Jeff Porcaro-designed Pearl DR1 drum rack are launched.
- 1984:** Innovation shifts into high gear at Pearl Taiwan with the production of MX, MLX, and GLX pro Maple drums. Export Series becomes the drum set choice of a generation of players.
- 1985:** Pearl's Drum-X System presents the next phase of electronic drums.
- 1986:** Pearl's first double bass drum pedal (P850TW) debuts along with 800 and 900 Series tour-grade hardware. Syncussion X electronic drums take e-synthesis percussion a step further.
- 1987:** The biggest names in rock play Pearl as Prestige Custom (MLX Maple) and Studio (BLX Birch) are launched. Tommy Lee's "Spinning Drum Solo" defies gravity in arenas worldwide.
- 1988:** Drummer Steven Adler drives Guns n'Roses from clubs to arenas with Pearl.



- 1989:** Pearl's groundbreaking Zenithal Resonator (CZX) 8-ply thick Maple shells debut worldwide in stunning Champagne Birdseye finish, setting a standard as the next level in pro drums.
- 1990:** Masters Series Maple (MMX) and Birch (MBX) drums raise the bar for the pro player. Pearl Corporation's expanded USA Headquarters in Nashville, TN open at its current home on Metroplex Dr. Pearl's first FFX Marching Snare drum sets a new standard for Field Percussion.
- 1992:** Pearl hand percussion products begin under the Afro Percussion name.
- 1993:** Session Series is launched.
- 1994:** Forum Series debuts, offering more to the entry-level player than ever before.
- 1995:** Export becomes the best-selling drum set of all time with over one million drums sold worldwide. Marvin "Smitty" Smith begins his 15-year tenure on "The Tonight Show."
- 1996:** Pearl's 50th Anniversary Ltd. Edition Solid Maple snare, Signature snares for Chad Smith, Omar Hakim, J.R. Robinson, and Dennis Chambers, and Powershifter pedals are introduced.
- 1997:** Masters Mahogany Classic (MHX) and Sensitone snare drums are developed.
- 1998:** Pearl redefines the scope of customized drums with Masterworks. Symphonic snare drums are introduced.
- 1999:** The OptiMount tom suspension system is developed. Pipe Band marching snares debut, as well as new Signature snares for "Smitty" Smith and Steve Ferrone.
- 2000:** The Powershifter Eliminator's patented Interchangeable Cam System brings customized feel to bass drum pedals. The Pearl Drummer's Forum is launched to players around the globe.
- 2001:** Pearl Percussion makes a grand entrance at NAMM 2001. Tico Torres' custom U.S. Flag-painted Masters kit – played at the Concert for NYC with Bon Jovi – is auctioned off to benefit 9/11 victim relief.
- 2002:** More Signature Snare Drums from Ian Paice, Tico Torres, and Eric Singer. Eric and Tico (with KISS and Bon Jovi) play the closing ceremonies of the 2002 Winter Olympics.
- 2004:** Masakatsu, the third generation of the Yanagisawa family, becomes Pearl CEO.
- 2006:** Pearl artist Mike Mangini becomes the World's Fastest Drummer by breaking the world record for the most single-stroke hits (1,203) in one minute.
- 2005:** Reference Series drums launch following two-years of sonic testing and win the Musikmesse International Press Award for Best Drum Set.
- 2007:** Pearl introduces its unparalleled Lifetime Warranty on drums and hardware. Vision Series, the first drum series from Pearl's new China facility, are launched.
- 2008:** Masters (MCX) Maple's low price tag makes the professional drum kit attainable.
- 2009:** The Demon Drive pedal takes bass drum pedal performance to new heights, wins multiple Music Industry awards.
- 2010:** ePro Live, Pearl's electronic drum powerhouse, fuses real drum shells with TruTrac technology. Joey Jordison is voted "Best Drummer" by Rhythm Magazine. Mike Mangini joins Dream Theater.
- 2011:** Reference Pure's reduced-weight shell recipe debuts for the pro player. The Airframe Carriers' lightweight rugged design changes the playing field for marching percussion.
- 2012:** Session Series returns with a more affordable pro drum package.
- 2013:** Pearl brings back the best-selling drum set of all time with a completely redesigned Export Series kit. The Demon Chain pedal and redesigned Advanced Hardware System stands debut.
- 2014:** 28 new state-of-the-art snare drum models are launched, Crystal Beat seamless acrylic drums return and win NAMM Best In Show and DRUM Magazine Reader's Poll Awards.
- 2015:** Wood-Fiberglass drums are updated and reissued for the modern player, Chad Smith designs the three-section Tricolon Signature Snare.

THE CHOICE IS YOURS.

PEARL HAS BEEN CRAFTING PERCUSSION INSTRUMENTS DESIGNED TO FIT THE NEEDS OF EVERY DRUMMER SINCE 1946. NO MATTER WHERE THE PLAYING ROAD TAKES YOU, PEARL HAS THE RIGHT DRUM SET OPTIONS TO MAKE YOUR VOICE HEARD AT EVERY STEP ALONG THE WAY.

MASTERWORKS



CUSTOM CRAFTSMANSHIP FOR THE MASTER PERCUSSIONIST.

The dream destination for the Pro drummer that wants true control. Every element of the kit's sound, look, and feel is player-selected from a limitless palette of custom options. Hand-crafted to heirloom perfection for the ultimate custom drum statement.

PAGES 8 - 11

REFERENCE



SONICALLY SELECT DRUM PERFORMANCE.

The best custom options from the Masterworks realm, preselected to draw the best in sound and playability from each drum. Optimum pro performance for high-volume, high-capacity playing presence.

PAGES 12 - 13

WOOD-FIBERGLASS



VINTAGE HYBRID, MODERN PERFORMANCE.

Saluting the sound that defined an era, a true Pearl original returns with our premium 7-ply Kapur shell, fused with a layer of hand-applied Fiberglass. The result is a unique combination of warmth, projection, and focused decay.

PAGES 26 - 27

CRYSTAL BEAT



THE ORIGINAL SEAMLESS ACRYLIC DRUM SHELL.

Originally introduced in 1973, Crystal Beat returns with unparalleled tonal - and visual - clarity and punch for a new breed of power players. Precision-molded in a variety of available sizes and finishes for an unmistakable drumming signature.

PAGES 28 - 29

REFERENCE PURE



UNRESTRICTED TONAL RESPONSE.

The sonically-select Reference formula in a thin drum shell format. Unrestricted tone for close-field articulation with a warm, resonant vibe. Ideal for controlled environments and concert settings where extended tuning range is paramount.

PAGES 14 - 15

MASTERS MAPLE RESERVE



A CLASSIC FORMULA FOR SONIC GREATNESS.

Combining a thin 4-ply Maple shell with 4-ply re-rings delivers an essential tonal combination of rich lows and wide-open resonance. This lively sonic character makes Masters Maple Reserve a natural choice for the most discerning musical pallet.

PAGES 20 - 21

DECADE MAPLE



A DRUM KIT 10 YEARS IN THE MAKING.

Pearl's 70 years of drum craftsmanship culminate with the kit you're ready to step up to. With 5.4mm Maple shells, pro-level features, and gorgeous lacquer finishes, Decade elevates your performance at a price that was previously impossible.

PAGES 30 - 31

EXPORT / EXPORT LACQUER



THE LEGENDS OF TOMORROW, PLAY EXPORT TODAY.

The kit that spawned a thousand drumming legends is back for a new generation. Available in wrapped or lacquer finishes, Pearl's new Export is built stronger than ever to give the student drummer's lifetime of play a strong beginning.

PAGES 32 - 33

MASTERS MAPLE COMPLETE



THE MASTERS SHELL COMES FULL CIRCLE.

The road-proven combination of warmth, power, and tonal purity that made Masters a legend shines forward. Pearl's new EvenPly 6-layer premium Maple shell, 2.3mm Superhoops, and an improved price tag make Masters a must for the touring pro.

PAGES 22 - 23

SESSION STUDIO CLASSIC



THE ESSENTIAL SOUND OF STUDIO GROOVE.

Classic, articulate, controlled. The punchy attack and tonal clarity of Session series' influential sound is here to stay with Kapur/Birch hybrid shells, traditional sizes, and a host of premium lacquer finishes.

PAGES 24 - 25

MIDTOWN



BIG GIG, SMALL RIG, HUGE SOUND.

For full-size play in a smaller footprint, this ultra-portable, complete shell pack lets the gigging drummer on the move sculpt rich, powerful grooves. Essential gear for the metropolitan player.

PAGE 34

ROADSHOW



IT'S YOUR TIME TO PLAY. START THE RIGHT WAY!

The rhythm is in you; the right gear is essential for setting it free. The Roadshow complete drum set package comes with everything needed (drums/hardware/cymbals/extras) to start your rhythmic journey to the big time.

PAGE 35

MASTERWORKS

CUSTOM CRAFTSMANSHIP FOR THE MASTER PERCUSSIONIST.

SHELL THICKNESS PRECISION TONAL CONTROL



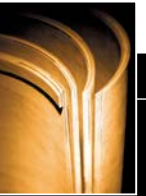
THIN (4-ply, 5mm w/ 4-ply Reinforcement Rings)
Responsive tonal sustain for the near-field environment.



MEDIUM (6-ply, 7.5mm)
Exceptional for general-purpose play. Excellent projection with full-bodied wood tone.



THICK (8-ply, 10mm and 10-ply, 12.5mm)
Maximum cut and projection with subdued sustain.



Masterworks allows you to further tailor your drum tone by selecting the thickness of each shell.



**YOU'VE ARRIVED.
IT'S TIME TO TELL THE WORLD.**

Since 1999, Pearl's hand-crafted *Masterworks* drums have given the professional drummer the tools to make a totally custom statement with new heights of perfection.

SHELL MATERIALS LET YOUR EARS DECIDE

For a totally personal sonic signature, Masterworks has more options for shell composition than any other custom drum builder; making each drum a truly unique work of art.

MAPLE

The perfect blend of tone, attack, and body.

- North American hardwood with rich, even grain.
- Ideal for general purpose applications.
- Equal tonal amounts of hi-end attack, mid-range body, and low-end punch.

BIRCH

The precision choice for high-volume cut and power.

- Premium "white" wood with marbled, subdued grain.
- Boosted hi-end and mellow midrange excellent for stage and studio.
- "Built-in EQ" delivers articulate stroke with shorter, even decay.

MAHOGANY

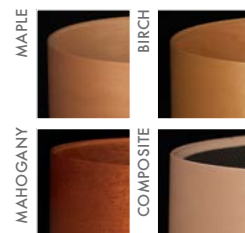
Deep, powerful punch with dark, elegant tone.

- Porous African wood with rich, dark texture and grain.
- Boosted bottom-end perfect for controlled rooms/studios.
- Rich low-end warmth with beautifully smooth midrange and hi-end roll-off.

COMPOSITE SHELL

Custom configure the Ultimate Hybrid.

- Combine wood types to sonically blend the characteristics of each material
- Maple/Birch ideal for outer plies for ease of finishing, while inner Mahogany plies boost bass and low end punch.
- Each cross-laminated two-ply panel is hand-selected for proper density, grain consistency, and color.



CUSTOM SHELL INTERIORS Expand the Tonal Spectrum.

- **Fiberglass** – A true Pearl original, a layer of fiberglass can be hand-applied to shorten decay and add volume
- **Carbonply** – A thin layer of carbon fiber can be fused to any shell interior to maximize high-frequency response.

- **Artisan Veneers** – Now any of Pearl's exotic exterior hardwoods can be added to the inner ply for further tonal expansion



#377 SCARLET SPARKLE FADE w/ HALOFLAKES

Define Yourself. Masterworks truly represents all that is possible in custom drums. Allowing you the freedom to custom configure your perfect visual statement, Masterworks' virtually unlimited lacquering options range from Gloss, Oil, and Satin finishes to Transparents, Fades, and Bursts. Custom graphics, banding, and inlay striping - All possible over your choice of hand-matched exteriors or Artisan exotic veneers.



BEARING EDGE OPTIONS

Nothing influences a drum's overall response more than the bearing edge. That's why Masterworks gives you three bearing edges from which to choose, and with our new hybrid option, allowing you to mix edge types on batter and resonant side of the same drum.



45 DEGREES
Provides the perfect blend of attack and warmth.

ROUNDED 45
Boosts mid to high frequencies as a result of greater head-to-shell contact.

FULLY ROUNDED
Provides maximum head-to-shell contact for the greatest boost in mid to low range frequencies.

HARDWARE COLOR AND LUG OPTIONS

Masterworks Series drums feature a choice of drum hardware plating options, and can be custom configured with any one of our precision tuning lugs.



CHROME
(Shown w/ STL100 Lug)

NICKEL
(Shown w/ STL150)

GOLD
(Shown w/ STL150 Lug)

BLACK CHROME
(Shown w/ BRL100 Lug)



ASSURES MANUFACTURING EXCELLENCE. EVERY TIME.

Pearl's proprietary Superior Shell Technology begins with select woods chosen for their unique acoustic attributes. Each is milled to precise thickness with overlapping scarf joint seams, and saturated with Pearl's exclusive "AcoustiGlue"; creating optimum resonance by drying to the exact consistency of the wood. Finally, the plies are cross-laminated in high-temperature molds at 1000 PSI of hydraulic pressure, producing superior tone and extreme strength.



BUBINGA
NATURAL TO WALNUT BURST

REFERENCE SERIES

SONICALLY SELECT DRUM PERFORMANCE.

Of the many Reference Series snare drums available, our Reference Series wood snare drum uses 6 inner plies of Birch united with 14 outer plies of Maple for a staggeringly thick 20 ply shell. The 45 Degree bearing edge brings all 20 plies to the party in a highly focused sweet spot. This projects the volume that you would expect from such a thick shell without losing sensitivity or articulation.

REFERENCE 20 PLY
Sn rum

Bridge style lugs and floor tom leg brackets provide maximum resonance with minimal shell contact. Pearl's revolutionary BRL lugs assure the ultimate in head seating and tuning integrity. The unique swivel function assures maximum resonance and sustain.

Our telescoping bass drum spurs feature a high-grip rubber tip. The tip can retract and allows a recessed spike to be exposed for maximum "bite" on carpeted surfaces.

REFERENCE SERIES: THE STANDARD TO WHICH ALL DRUMS ARE JUDGED.

Reference Series Drums are the product of what became a two and a half year search for harmonic perfection. Like keys on a piano, each drum in a kit should combine to create a singular instrument without losing its own sonic signature. With this concept in mind, Pearl explored the many options in the Masterworks crafting process to find the perfect combination of shell material, thickness, and edge profile for each individual size and type of drum. The result is a collective of individually-engineered drums dialed-in to the best sonic character for that drum's intended voice. Truly, the *reference standard for quality and sound performance.*



All Reference snare drums feature Pearl's SR1000 Glide-Lock Strainer, which includes a locking throw off lever and tension knob that won't loosen no matter how hard you play. Low-friction technology permits smooth gliding action for ultra quiet, super precise motion.

US Patent #7220905, #7301087, #7365256

REFERENCE SPECIFICATIONS

SHELLS	Maple, Birch & African Mahogany
SNARE	20 Ply Matching 13 x 6.5, 14 x 5 or 14 x 6.5*
FINISH	Super High Gloss Lacquer / Lacquer Sparkles**
HEADS	Remo Clear Emperor Tom, Powerstroke3 Bass
TOM MOUNTS	Aluminum OptiMount Suspension System
TOM ARMS	Sold Separately
DRUM HARDWARE	Chrome, Nickel, Black Chrome Plated or Gold Plated
HOOPS	MasterCast Die-Cast Hoops
LUGS	BRL Bridge Lugs with Swivel Function

THE REFERENCE RECIPE

All drums are not created equal. So why make them all with the same wood type and edge? Reference toms, snares, and bass drums each have a different 'recipe' for their specific application and voice.

THE REFERENCE RECIPE	SHELL TYPE	BEARING EDGE	SONIC OUTPUT
8" and 10" Toms	Maple(4)/Birch(2) 6-ply (RF 7.5mm / RFP 5.4mm)	Rounded 45°	Extra cut and projection for high-note pitch
12" Toms	Maple(6) 6-ply (RF 7.5mm / RFP 5.4mm)	Rounded 45°	Transitional mid-note; blend of warmth and cut
13" Toms	Maple(4)/Mahogany(2) 6-ply (RF 7.5mm / RFP 5.4 mm)	Rounded 45°	Top-end slap with added low/bottom end
14" and 15" Toms	Maple(4)/Mahogany(2) 6-ply (RF 7.5mm / RFP 5.4 mm)	Fully Rounded	Bracing low-end with extended sustain
16" Toms	Maple(2)/Mahogany(4) 6-ply (RF 7.5mm / RFP 5.4mm)	Fully Rounded	Bracing low-end with extended sustain

THE REFERENCE RECIPE	SHELL TYPE	BEARING EDGE	SONIC OUTPUT
14" Floor Toms	Maple(4)/Mahogany(4) 8-ply (RF 10mm / RFP 7.2mm)	Fully Rounded	Bracing low-end with extended sustain
16" and 18" Floor Toms	Maple(2)/Mahogany(6) 8-ply (RF 10mm / RFP 7.2mm)	Fully Rounded	Bracing low-end with extended sustain
18" and 20" Bass Drums	Maple(2)/Mahogany(4) 6-ply (RF 7.5mm / RFP 5.4mm)	Fully Rounded	Enhanced sub-frequency response
22", 24", and 26" Bass Drums	Maple(2)/Mahogany(6) 8-ply (RF 10mm / RFP 7.2mm)	Fully Rounded	Booming bass tone with articulate punch

*Sold Separately **See full Color Chart on back cover for all Special Order Finishes. Stock finishes listed right.

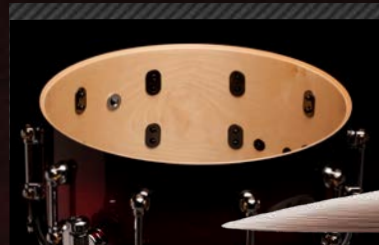


REFERENCE PURE SERIES

UNRESTRICTED TONAL RESPONSE.

THE REFERENCE PURE DIFFERENCE:

- Ultra-thin "Evenply" Shells (About 30% thinner than Reference) resonate freely with the lightest touch. We reduced the tom thickness from 7.5 to 5.4mm thick and floor toms and bass drums from 10mm down to 7.2mm.
- Shell hardware mass decreased by 30%, allowing better vibration transference to the shell from the head.
- 1.6mm FatTone Hoops' exclusive hemmed/welded edge (US Pat. #8367917) gives increased strength to low-mass design.
- STL Swivel Tube Lugs allow for increased resonance, minimal shell contact, and precisely aligned, no-bind tuning.



Reference Pure snare drums feature ultra-thin "Evenply" shells with 4 outer plies of Maple for a smooth, balanced sound with 2 inner plies of Birch for extra cut and projection. The 45 degree bearing edges provide superb sensitivity and pinpoint articulation.

REFERENCE PURE SPECIFICATIONS

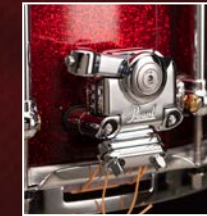
SHELLS	Low Mass Evenply Maple, Birch & African Mahogany
SNARE	6 Ply Matching 13 x 6.5, 14 x 5, 14 x 6.5"
FINISH	Super High Gloss Lacquer / Lacquer Sparkles **
HEADS	Remo Clear Emperor Tom, Powerstroke3 Bass
TOM MOUNTS	Aluminum OptiMount Suspension System
TOM ARMS	Sold Separately
HARDWARE	Chrome, Nickel, Black Chrome Plated, or Gold Plated
HOOPS	Low Mass FatTone Hoops
LUGS	Low Mass STL Swivel Tube Lugs <i>*Sold Separately</i>



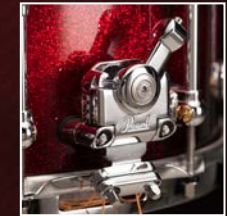
RFP924XP/C
#103 PIANO BLACK



Using the same shell composition formula as the original (number and type of wood plies, task-specific bearing edges, etc.) the highly resonant qualities of Reference Pure's lower-mass, thinner shell assure an uninhibited shell-focused tonality that responds immediately in any playing environment.



Pearl's SR1000 Glide-Lock Strainer's locking throw off lever and tension knob assures worry-free, slip-free performance from all Reference Pure Snare Drums. (US Patent #7220905, #7301087, #7365256.)



Aluminum OptiMount Suspension System mounts to the tension rods and are insulated from metal to metal contact.

Air Suspension Rubber Tip (US Patent #5881981) isolates the tom from the floor, preventing tonal choke and increasing resonance.



Pearl's Golden Ratio Air Vent (US Patent #7485791) is precision placed on toms to increase low-end response, while low-mass, low-contact STL lugs and floor tom brackets allow for increased shell sustain.



** Stock finishes. See full Color Chart on back cover for all Special Order Finishes.



#102 NATURAL MAPLE #103 PIANO BLACK #377 SCARLET SPARKLE BURST

Reference Pure proudly builds upon the Masterworks philosophy started by Pearl's original Reference Series Drums.

RFP903XP/N

#111 MATTE NATURAL w/ OPTIONAL NICKEL-PLATED HARDWARE

MUSIC CITY CUSTOM SERIES

HAND-ASSEMBLED IN THE USA FOR TRUE PEARL ARTISTS...LIKE YOU.

ONCE EXCLUSIVELY FOR ARTISTS,
THESE DRUMS NOW CAN BE YOURS.

INTRODUCING MUSIC CITY CUSTOM.
THE ARTIST EXPERIENCE
FOR EVERY DRUMMER.

For over 40 years, Pearl's exclusive USA Artist Custom shop has been collaborating with some of the most illustrious names in drumming to handcraft personal touring kits; featured on the largest live show stages across the world. Our new Music City Custom Series now allows you to experience the same level of service and pride, by owning an exclusive kit precision CNC drilled and fully assembled here at our custom shop facility within Pearl's USA corporate headquarters in Nashville, TN.



#725 SATIN GREY SEA GLASS

MUSIC CITY CUSTOM STARTS WITH REFERENCE

Pearl is known to produce some of the finest drum shells available today, and our top of the line Masterworks and Reference shells are truly without equal. Our exclusive SST shell forming process is often copied, but never duplicated. Music City Custom drums features pristine shells of the finest wood plies, manufactured in Pearl's renowned overseas Masterworks facility, and available in your choice of either Reference or Reference Pure shell specifications. Choose from 43 drum sizes, 29 beautiful covered finishes, and either RF or RFP shell specifications to experience what our top endorsees have enjoyed for years.



*See full Color Chart on Page 19.

#413 TURQUOISE GLASS

MUSIC CITY CUSTOM SERIES

HAND-ASSEMBLED IN THE USA FOR TRUE PEARL ARTISTS...LIKE YOU.



GET IT WHEN YOU NEED IT

Our goal is to complete each Music City Custom kit within 14 business days from the date we receive your order through one of our many authorized dealers. No one in the industry does this. Quick custom manufacturing, together with Pearl's exclusive lifetime warranty, massive size and color choice selections, and industry-leading craftsmanship all combine to set a new standard for what a USA born hi-end drum set should be.

HANDCRAFTED EXCELLENCE

From hand-covering each and every shell, to precision CNC drilling, hand assembly and on to a final painstaking inspection process of every detail of each kit's manufacture, Music City Custom provides everyone the true artist experience and a drum set like no other.



#422 MATTE WHITE MARINE PEARL

HANDCRAFTED, ARTIST DESIGNED

Explore the option of *Reference* or *Reference Pure-recipe* SST drum shells; precision drilled-to-order, assembled, and immediately available in your choice of 29 tour-ready finishes. From classic sparkles and vintage pearls to satin flames and current favorites, it's here and ready to define your command of the stage.



#403 RED ONYX



#405 NICOTINE WHITE MARINE PEARL (Large)



#407 RED GLASS



#409 DIAMOND GLITTER



#412 BLACK OYSTER GLITTER



#413 TURQUOISE GLASS



#414 ICE BLUE OYSTER



#415 BRONZE OYSTER



#416 BLACK N' WHITE OYSTER



#417 PEWTER ABALONE



#418 BLUE ABALONE



#419 BURNT ORANGE ABALONE



#420 GOLDEN YELLOW ABALONE



#421 BLACK DIAMOND PEARL



#423 VINTAGE GOLD SPARKLE



#424 VINTAGE BLUE SPARKLE



#425 CHARCOAL BLACK SPARKLE



#426 MIRROR CHROME



#427 BRIGHT CHAMPAGNE SPARKLE



#446 GREEN GLASS



#447 BURNT ORANGE GLASS



#448 WHITE MARINE PEARL (Large)



#720 CRANBERRY SATIN SWIRL



#721 BLUE SATIN MOIRE



#722 WHITE SATIN MOIRE



#723 GOLD SATIN MOIRE



#724 SHADOW GREY SATIN MOIRE



#725 SATIN GREY SEA GLASS

#422 MATTE WHITE MARINE PEARL PICTURED ON PAGE 18

MASTERS MAPLE RESERVE SERIES

A CLASSIC FORMULA FOR SONIC GREATNESS.



Utilizing premium North American Maple veneers from our exclusive Masterworks supply vault, the thin, 4-ply shell configuration (with reinforcement rings) in new Masters Maple Reserve delivers a smooth, open tonality with classic resonant shimmer. All Masters drums feature Pearl's proprietary 38-step lacquering process and showcase a classic, vintage-flavored style as distinctive as the shells they adorn.

MASTERS MAPLE RESERVE SPECIFICATIONS

SHELLS	4-ply (5mm) 100% Maple w/4-ply Maple Re-Rings
SNARE	Matching 14x5.5 or 14x6.5 (Sold Separately)
FINISH	Super High Gloss and Matte Lacquer
HEADS	Remo Clear Ambassador Tom, Ported Powerstroke3 Bass
TOM MOUNTS	Aluminum OptiMount Suspension System
DRUM HARDWARE	Chrome
HOOPS	Low Mass FatTone Hoops
LUGS	CL Bridge Lugs
BD MUFFLER	BDMF (Full Size)



Masters Maple Reserve comes standard with performance-proven 1.6mm FatTone tom hoops. Featuring an exclusive hemmed/welded edge for added stability, their low mass helps increase sustain and tonal resonance without sacrificing projection.



MRV924XEDP/C
#359 TWILIGHT BURST

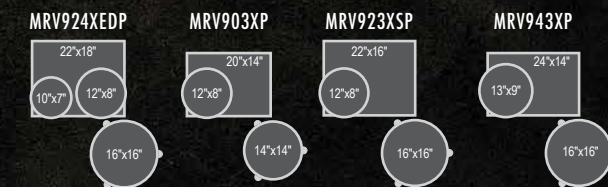
MRV923XSP/C
#343 OLIVE BURST

THE MASTERS LEGACY.

Featuring 4-ply Maple reinforcement rings, Masters Maple Reserve is a natural choice for the most discerning musical pallet. This classic integration increases shell stability and tonal control, delivering rich, sustained lows and lively sonic punch.



The Aluminum OptiMount suspension system provides exceptional stability and mounting control by attaching to the tom's tension rods at four corresponding points. This allows the shell to vibrate freely without restriction.



MASTERS MAPLE COMPLETE SERIES

THE MASTERS SHELL COMES FULL CIRCLE.

Pearl's Masters Series has always been synonymous with the very best in professional instruments for the touring drummer. In creating new Masters Maple Complete drums, Pearl has crafted a refined representation of Masters' 25 year history in one total package.

EvenPly-Six Shell: This premium, six layer North American Maple shell incorporates reduced-thickness, cross-laminated plies. This 28% thinner shell produces the tonal purity and increased resonance of Pearl's legendary Masters MMX, while projecting with the vibrant power of the thicker MRX series.



SP30 Spurs



Insulated Die-Cast Bass Drum Claws



Sleek Bridge-Style CL Lugs

To maintain optimal resonance and articulation, Masters Maple Complete features triple-flanged SuperHoop II tom and snare hoops. Professional hardware touches include SP30 spurs, LB40 floor tom legs, insulated die-cast bass drum claws, and our sleek bridge-style CL lugs for reduced shell contact and improved shell performance.

#347 BOMBAY GOLD SPARKLE



MCT943/C
#348 ABSINTHE SPARKLE

MCT924XEDP/C

22"x18"
10"x7" 12"x8"

16"x16"

MCT903XP/C

20"x14"
12"x8"

14"x14"

MCT923XSP/C

22"x16"
12"x8"

16"x16"

MCT943XP/C

24"x14"
13"x9"

16"x16"

MASTERS MAPLE COMPLETE SPECIFICATIONS

SHELLS	EvenPly Six (6-ply, 5.4mm) 100% Maple
SNARE	Matching 14x5.5 or 14x6.5 (Sold Separately)
FINISH	Matte Lacquer and Lacquer Sparkles
HEADS	Remo UT Pinstripe Tom, Ported UT Powerstroke3 Bass
TOM MOUNTS	OptiMount Suspension System
DRUM HARDWARE	Chrome
HOOPS	SuperHoop II (2.3mm Triple-Flanged)
LUGS	CL Bridge Lugs
BD MUFFLER	BDMM (Mini)

UNPARALLELED SOUND. ATTAINABLE PRICE.

The sound that made Masters a legend shines forward. With improved features and a lower price, Masters Maple Complete is the total percussive statement for the road-ready pro drummer.

Five premium lacquer finishes are available in four pre-configured shell packs, as well as a host of component and add-on drums.



#124 MATTE BLACK MIST

#346 VERMILION SPARKLE

#347 BOMBAY GOLD SPARKLE

#348 ABSINTHE SPARKLE

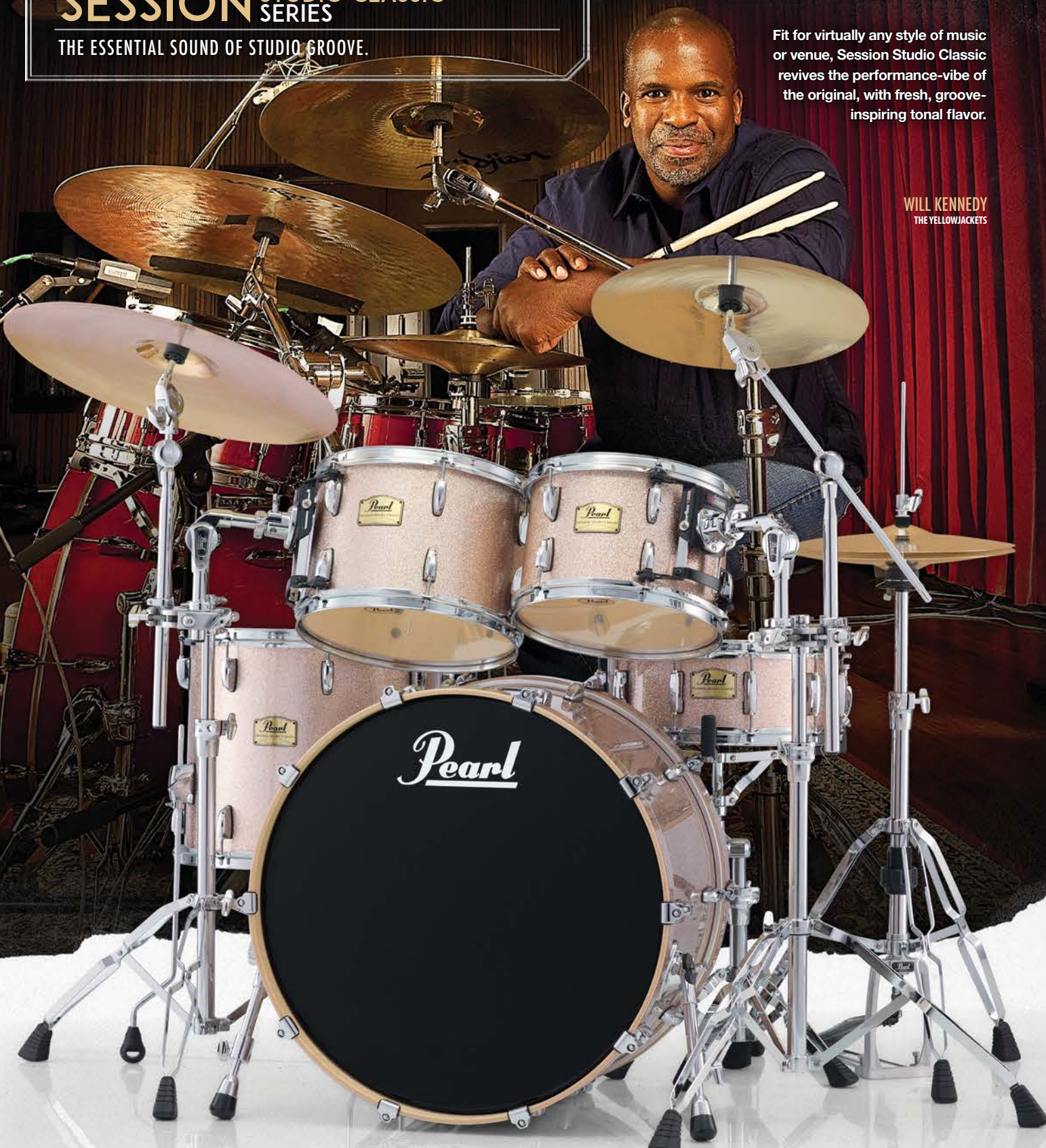
#351 SATIN NATURAL BURST

SESSION STUDIO CLASSIC SERIES

THE ESSENTIAL SOUND OF STUDIO GROOVE.

Fit for virtually any style of music or venue, Session Studio Classic revives the performance-vibe of the original, with fresh, groove-inspiring tonal flavor.

WILL KENNEDY
THE YELLOWJACKETS



The nucleus of the Session Studio Classic sound is the blending of Kapur wood's warm, resonant qualities with the controlled brightness of Birch. Topping this timeless combination with a perfect 45° bearing edge creates a shell with powerful attack and a beautiful tonal decay.



Session toms and snare drums feature rigid yet low mass SuperHoop II Rims for ease of tuning and optimum resonance. All drums feature classic Session 'RL' Series lugs.



Pearl's OptiMount Suspension System attaches to the tom's tension rods and provides the ultimate in stability, while at the same time allowing unrestricted resonance through the shell.



SSC924XUP/C
#110 SEQUOIA RED

TERENCE HIGGINS
WARREN HAINES AND DFRANCO



To complement its unique shell composition, Session Studio Classic shells are crafted with traditional shallow depths. This allows energy from the stroke to flow freely through the drum, and creates a livelier tonality with vintage-flavored overtones.



SSC924XUP/C
#106 ANTIQUE IVORY

SESSION SSC SPECIFICATIONS

SHELLS	6 ply Birch / Kapur 7.5mm
SNARE	Matching 14 x 5.5" or 14 x 6.5"
FINISH	Super High Gloss Lacquer
HEADS	Remo Clear Pinstripe Tom, Powerstroke3 Bass
TOM MOUNTS	OptiMount Suspension System
DRUM HARDWARE	Chrome
HOOPS	SuperHoop II 2.3mm Triple Flanged
LUGS	RL Lugs

*Sold Separately

CLASSIC SOUND. AMAZING VALUE.

Session Studio Classic is, without question, the ultimate value in professional drums. Offering many of the ground-breaking features normally found on drums that cost substantially more, Session Studio Classic is the perfect complement to your evolving playing style.

For a sophisticated tonal range, Session Studio Classic features a diverse selection of shell sizes to fit your style and taste, including bass drums from 20" to 24", matching snare drums, and six classic Pearl high gloss lacquer finishes.

SSC924XUP/C
#361 VINTAGE COPPER SPARKLE



#103 PIANO BLACK #106 ANTIQUE IVORY #110 SEQUOIA RED #113 SHEER BLUE #361 VINTAGE COPPER SPARKLE #389 MATTE LIQUID AMBER

WOOD-FIBERGLASS SERIES

VINTAGE HYBRID, MODERN PERFORMANCE.

Developed at the dawn of the 1970's, Pearl introduced Wood-Fiberglass drums as a studio solution for players looking for a louder, fatter, brighter sound. This unique synthetic-fusion shell would help put Pearl on the map, and defined the sound of an era.

Now, this classic tone returns for today's roots-conscious player. The full-bodied power of Pearl's original Wood-Fiberglass drums is back with modern craftsmanship, style, and functionality.



FW923XP/C
#327 SATIN COCOA BURST



THE HARDWARE

Wood-Fiberglass toms include the OptiMount suspension system to remove undue shell pressure and increase sustain. Pearl's 2.3mm triple-flanged Superhoops add to the attack without sacrificing tonal body.



THE SHELL

True to the legacy set by Pearl's original innovative hybrid, Wood-Fiberglass drums feature a hand-applied inner layer of Fiberglass to add focus to

the darker tonal qualities of its 7-ply Poplar/Kapur wood shell. To further sculpt the tone of these unique drums, a sharp 45° edge is cut on the toms of each kit, while the bass drum features a fully-rounded edge. This and accentuates the sonic cut of Fiberglass; delivering a unique combination of warmth, projection, and focused decay.



Original shots of Wood-Fiberglass "Image Creator" kits from the 1970 Pearl Catalog.

WOOD-FIBERGLASS SPECIFICATIONS

SHELLS	7-ply (2x Poplar / 4x Kapur / 1x Fiberglass) 7.5mm
FINISH	High Gloss and Satin Lacquer
HEADS	Remo Pinstripe Tom, Powerstroke Coated/Clear Bass
TOM MOUNTS	OptiMount Suspension System
DRUM HARDWARE	Chrome
HOOPS	Superhoop II 2.3mm Triple Flanged
LUGS	RL Lugs

WOOD-FIBERGLASS CONFIGURATIONS

To best capture the essence of this classic sound, Wood-Fiberglass sets are available as 3-pc. shell packs in "Traditional" sizes and depths.

FW903XP/C

20"x14"
12"x8"

14"x14"

FW923XP/C

22"x14"
13"x9"

16"x16"

FW943XP/C

24"x14"
13"x9"

16"x16"

FW963XP/C

26"x14"
13"x9"

16"x16"

FW963XP/C
#151 PLATINUM MIST

WOOD-FIBERGLASS FINISHES

Four elite lacquer finishes have been selected from the Reference/Masterworks pallet in tribute to the originally offered wrap finishes of the 1970 offering.



#103 PIANO BLACK

#151 PLATINUM MIST

#152 ANTIQUE GOLD

#327 SATIN COCOA BURST

CRYSTAL BEAT SERIES

THE ORIGINAL SEAMLESS ACRYLIC DRUM SET.

CRYSTAL BEAT SPECIFICATIONS

SHELLS	7mm Seamless Moulded Acrylic
SNARE	Matching Free Floater*
FINISH	Transparent
HEADS	2-Ply on Tom Batters, Single-Ply Resonant
TOM MOUNTS	OptiMount Suspension System
TOM ARMS	Sold Separately
DRUM HARDWARE	Chrome
HOOPS	1.6mm Triple-Flanged
LUGS	CB Mid-Lugs on Toms, CB Fat-Lugs on Bass

*Sold Separately

In 1973, Pearl set a benchmark in the drumming world with the introduction of Crystal Beat. A stunning combination of visual appeal and powerful, sonic attack, Crystal Beat's revolutionary seamless construction was molded - not rolled - creating a strong acrylic drum system that could stand up to the rigors of touring.

Original Crystal Beat Kit from 1973 Pearl Catalog.



#730 ULTRA CLEAR



CRB525FP/C
#731 RUBY RED

Not just another transparent trap kit for the hipster set, Crystal Beat's original seamless shell is back, upgraded, and fortified for today's power player.



-  #730 ULTRA CLEAR
-  #731 RUBY RED
-  #732 TANGERINE GLASS
-  #733 FROST ACRYLIC

CRB543P/C
#732 TANGERINE GLASS

SHELL

By increasing shell thickness to 7mm, Crystal Beat's modern acrylic shell is more flexible, less brittle, and deliver more body and tone than ever before. Its dual 45° bearing edge features a rounded apex, adding control, increased articulation, and punch to acrylic's lively sonic nature.

HARDWARE

Crystal Beat's toms include the OptiMount suspension system to remove undue shell pressure and increase sustain. 1.6mm triple-flanged hoops offer just the right amount of attack without sacrificing tonal body.



CRB543P/C
#733 FROST ACRYLIC
18" TOM ADD-ON

DECADE MAPLE SERIES

A DRUM KIT 10 YEARS IN THE MAKING.

DECADE MAPLE

Practice Time is Over, It's Time to Get Serious • To elevate the playing field for today's advancing drummer, Pearl has drawn on 70 years of award-winning drum craftsmanship to create new Decade Maple series drums. The first all Maple, lacquered drum set to carry a Lifetime Warranty in this price range, Decade is built to push the boundaries of performance and value, and project your drumming voice with authority.



DMP925SP/C
#260 SATIN BROWN BURST

DMP943XP/C
#229 WHITE SATIN PEARL
(Snare Sold Separately)

The Kit You've Prepared Yourself for is Here • With feature-heavy shell packs starting at only \$559 Street, Decade Maple drums are perfect as a primary kit for evolving players, or a secondary "gigging" kit for the seasoned pro.

THE DECADE DIFFERENCE



Decade's 6-ply/5.4mm all Maple shell is what sets it apart from the other players in the field. The final product of ten years of process and material refinement, each cross-laminated ply incorporates Pearl's proprietary Superior Shell Technology. The resulting thin (but powerfully strong) shell reacts quickly to the stroke, producing beautifully resonant highs and thundering lows.



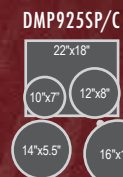
Pearl's three-way Opti-Loc Mounting System produces clear tone and wobble-free stability by suspending each tom at two tuning points and one of the drum's two air vents.



Decade's low-mass/low-contact shell hardware assures optimum shell performance and rock-solid durability. Features include Uni-Lock gearless tom arms, insulated die-cast claw hooks, R40 Air Suspension Floor Tom feet, and a newly-designed mini lug.



DMP927SP/C
#261 GLOSS DEEP RED BURST



Available in five custom colors, Pearl's cultured lacquer finishing process is applied to each shell exterior to add spectacular vibrancy.



DECADE MAPLE SPECIFICATIONS

SHELLS	6-Ply (5.4mm) 100% Maple
SNARE	14 x 5.5 Matching
FINISH	High-Gloss / Matte Lacquer
HEADS	Remo UT Clear Ambassador Tom, Ported UT Powerstroke3 Bass
TOM MOUNTS	Opti-Loc Mounting System
DRUM HARDWARE	Chrome
HOOPS	1.6mm Steel Triple Flanged
LUGS	NDL Lugs
BD MUFFLER	BDMM (Mini)

EXPORT LACQUER SERIES

THE LEGENDS OF TOMORROW, PLAY EXPORT TODAY.

Crafted to capture the look, sound, and feel of top-end gear at an accessible price, new Export Lacquer drums boast a list of features that is far beyond their low price-tag. Everything you would expect from the #1 selling drum set in the world is in the mix, upgraded, and ready to fuel the fire of drumming right out of the gate for the serious player.

EXPORT LACQUER SPECIFICATIONS

SHELLS	Poplar and Asian Mahogany Blend
SNARE	14 x 5.5 Matching Wood Snare
FINISH	Choice of 3 High Gloss Lacquer Finishes
HEADS	Remo Clear Tom Head, Powerstroke Bass Head
TOM MOUNTS	Opti-Loc Mounting System
TOM ARMS	TH701
DRUM HARDWARE	Chrome
HARDWARE	P930, BC830, C830, H830, S830

Available in four configurations in a choice of four lacquered finishes, Export Lacquer can be expanded with a wide range of matching add-on components to create a setup as unique as your playing signature.



Pearl's Opti-Loc Mounting System's three-way attachment design utilizes rubber isolators at two tuning points and another at one of the drum's two air vents. This creates maximum sustain and resonance while providing wobble-free performance.

EXL725S/C
#255 NIGHTSHADE LACQUER

CONFIGURATIONS
Includes HMP930 Hardware

EXX725/C EXL725/C	EXX725S/C EXL725S/C	EXX705/C EXL705/C
22"x18" 12"x8" 13"x9" 14"x5.5" 16"x16"	22"x18" 10"x7" 12"x8" 14"x5.5" 16"x16"	20"x16" 10"x7" 12"x8" 14"x5.5" 14"x14"



THE BEST SELLING DRUM SET OF ALL TIME.

After 30 years of being the #1 Selling drum set in the world, Export Series is still the name every drummer knows. Having jumpstarted thousands of drumming careers by bringing quality and value into one package, today's Export continues to build legends.

With features like Reference-inspired shell composition, a choice of wrap (EXX) or high-gloss lacquer (EXL) finish, and our unbeatable 830-Series hardware package, Export is ready to fuel the fire for future drumming icons.



P930
DRUM PEDAL

Export comes equipped with the P930 drum pedal. This drum pedal combines the long board design of our Demon Drive drum pedal with the interchangeable cam design of our Eliminator drum pedal for amazing performance and value.

EXPORT SERIES

THE BEST SELLING DRUM SET OF ALL TIME.

Export's Reference-inspired blended shell combines the classic sound of Poplar with inner plies of Asian Mahogany for strong volume, deep resonance and sustained low-end frequencies.



Export Series incorporates Pearl's SST (Superior Shell Technology), Opti-Loc Mounting System, all-new 830 Series Hardware with a P930 Pedal, and a choice of six amazing stocking finishes.

EXPORT SPECIFICATIONS

SHELLS	Poplar and Asian Mahogany Blend
SNARE	14 x 5.5 Matching Wood Snare
FINISH	Choice of 6 Covered Finishes
HEADS	Remo Clear Tom Head, Powerstroke Bass Head
TOM MOUNTS	Opti-Loc Mounting System
TOM ARMS	TH701
DRUM HARDWARE	Chrome
HARDWARE	P930, BC830, C830, H830, S830



EXX725S/C
#708 GRINDSTONE SPARKLE

P930 PEDAL & 830 SERIES HARDWARE



Without a doubt the most sophisticated hardware ever offered on a drum kit at this price. The BC830 Boom stand, C830 Cymbal stand, and S830 Snare Drum stand all feature infinitely adjustable Uni-Lock Tilters for pinpoint positioning. Robust 1" diameter base tubes and 7/8" diameter center tubes with sturdy double-braced tripods provide exceptional rigidity and stability. The H830 Hi-Hat stand features swivel legs that accommodate double pedals. The P930 drum pedal combines the styling and performance of the Demon Drive pedal with the Eliminator interchangeable cam technology for tried-and-true power, speed, and control.



MIDTOWN SERIES

BIG GIG, SMALL RIG, HUGE SOUND.



Lift used on Midtown raises the drum to the optimal position for your pedal.

MDT764P/C
#704 BLACK CHERRY GLITTER

BIG GIG, SMALL DRUMS, HUGE SOUND.

At home on the street as well as on stage, Pearl's ultra-portable Midtown Kit is vital for the gigging drummer in the metropolitan groove.

- Full-size play in a smaller footprint.
- Elevated 16x14" kick drum delivers solid low-end foundation for solid backbeats.
- Included 10x7" tom, 13x12" floor tom, and 13x5.5" snare create a unique sonic statement.
- A full shell pack costing less than many snare drums.

INSTANTLY PORTABLE

The Midtown Kit's compact size makes it ideal for tight spaces, and quickly breaks down into an optional two gig bag set (PMTBG, shown,) for quick transport.



MIDTOWN SPECIFICATIONS

SHELLS	6 Ply 7.5 mm Poplar
SNARE	13 x 5.5 Matching Wood Snare
FINISH	Choice of 2 Covered Finishes
HEADS	Remo Clear Toms, Powerstroke Bass Clear Batter Coated Front
TOM ARMS	TH701
HARDWARE	Chrome

DRUM SHELLS



6 Ply 7.5 mm Poplar



MDT764P/C
#701 BLACK GOLD SPARKLE



#701 BLACK GOLD SPARKLE



#704 BLACK CHERRY GLITTER

ROADSHOW SERIES

IT'S YOUR TIME TO PLAY. START THE RIGHT WAY WITH PEARL!

THE BEST STARTER DRUM SET AVAILABLE

True to Pearl's legacy of drum-building excellence, **ROADSHOW SERIES** is a complete drum set package including all the key elements you need to start your journey to the big time.

- **ROADSHOW's** included hardware package is second-to-none in its class
- All stands are dual-reinforced with double-braced legs
- Height and angle adjustable with locking tilters
- Double-braced Drum Throne and Cymbal package included

THRONE INCLUDED BASS DRUM PEDAL



- Double-braced
- Height adjustable
- Comfortable for extended session



- Dual-chain drive action and adjustability
- Smooth, effortless play



RS525SC/C
#707 BRONZE METALLIC

CONFIGURATIONS COMPLETE SETS WITH HARDWARE & CYMBALS



RS525SC/C
#91 RED WINE

RS525WFC/C
#31 JET BLACK

RS505C/C
#707 BRONZE METALLIC

RS584C/C
#706 CHARCOAL METALLIC



NATE MORTON THE VOICE

For additional info, testimonials, assembly videos, free instructional videos, and access to the largest online drummer's community, go to:

WWW.MYFIRSTDRUMSET.COM



#31 JET BLACK #91 RED WINE #706 CHARCOAL METALLIC #707 BRONZE METALLIC

DRUM SHELLS



ROADSHOW's bass drum, tom toms, and snare feature a 9-ply Poplar shell for optimum tonal power.

ROADSHOW SPECIFICATIONS

SHELLS	9 Ply 7mm Asian White Poplar
SNARE	Matching Wood Snare
FINISH	Choice of 4 Covered Finishes
HEADS	Clear Tom Heads, Coated Snare Head, Self-Muffled Bass Head
TOM ARMS	Individually Locking 7/8" Tube Joint Holders
HARDWARE	Dual-Chain Drive Bass Drum Pedal Double-Braced Cymbal*, Snare, and Hi-Hat Stands Double-Braced Throne
CYMBALS	16" Brass Cymbal, 14" Brass/Hybrid Hi-Hat Cymbals
ACCESSORIES	Pro Drum Stick Bag, Two pair of Maple 5A Sticks <small>*Docking Cymbal Boom Arm Included with RS 584C/C</small>

ePRO SERIES

THE NEW GENERATION OF REAL ELECTRONIC DRUMS.

TOMMY LEE
MÖTLEY CRÜE



EPEX725S/C
#708 GRINDSTONE SPARKLE
WITH EP02P CYMBALS & EHH2 HI-HAT

All of these great components couldn't reach their full potential without rich drum and percussion sounds generated from the r.e.d.box drum module (r.e.d. stands for Real Electronic Drums). The 128MB RAM capacity accommodates 1000 High Definition Sounds, 150 High Definition kits, plus space for 50 user-created kits.

r.e.d.box
Real • Electronic • Drums

HIGH DEFINITION KITS - JUST A CLICK AWAY.

One very unique and exciting capability of Pearl's r.e.d.box is the Memory Switch, which gives you the ability to flash the memory and substitute a lush, super high-end drum set for the original acoustics. Pearl has partnered with professional digital drum samplers Toontrack, Zildjian, and Steven Slate Drums, to provide the lush kits through redboxsoundshop.com.



RBM20MUL
r.e.d.box MODULE

redboxsoundshop.com offers the ultimate variety of high resolution kits ready for download. Play along mp3s are available in all genres as well as historical Pearl kits.

MEMORY SWITCH

One of the most unique features of the r.e.d.box module is the ability to flash the memory of the module and replace the Original Acoustics with one large and lush-sounding kit. Just follow these easy steps and you'll be on your way to playing premium kits on your ePro Live from the best drum sampling software companies in the world!

1. Visit redboxsoundshop.com to preview and purchase specially designed kits from Zildjian, Toontrack, Steven Slate, and Pearl and download the free software that allows your PC or Mac to communicate with the r.e.d.box.
2. Connect your computer to the r.e.d.box with a USB cable.
3. Launch the Memory Switch communication software and move the Original Acoustics to your computer.
4. Using a Mac, drag and drop the Lush kit onto the r.e.d.box icon which loads in 20 minutes. (Separate instructions required for PC)
5. Reverse the process to replace the original acoustics.
6. Free samples of lush sounding kits and drumless play-a-long tracks are available at redboxsoundshop.com.

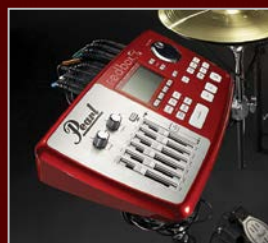


- Pad & Cymbal Inputs**
12 Dual-Zone trigger inputs for 24 unique sound sources
- MIDI IN/OUT**
Connects with external MIDI device
- USB IN/OUT**
Input for loading new sound sets from Mac or PC. Sends and receives MIDI
- AUX IN**
Connects to external sound source
- AUX OUT**
Connects to monitor system or recording device (sound assignable)
- MAIN OUT**
Connects to amplifier or speaker system (sound assignable)

r.e.d.box 2.0 firmware updates provide an enhanced dynamic range and sensitivity to give drummers the expression needed to appreciate the nuances of the lightest ghost notes and softest buzz rolls on stage or in the studio. Every kit has been modified to use the pitch-to-velocity function which allows samples to change in pitch when played at different velocities, creating a more realistic performance and reducing the unwanted triggering that is evident in most modules. ePro Live now supports the addition of 2 extra crash cymbals which require no additional programming when inserted to trigger inputs #10 and #11. Additional improvements have been made on the panning, EQ, and effects to provide the highest quality sonorities for recording or live performances. The fifty new kits run the gamut from Acoustic, One man Rhythm Sections and Hybrid Electronic. The r.e.d.box now has 150 kits and is the largest library available in a drum module.

ePRO POWERED BY EXPORT

ePro Powered by Export is the new generation of electronic drums from Pearl. We have combined the power of ePro live with our new Export series to give you the real look and feel that today's drummer demands. ePro powered by export is available in both Lacquer and Wrap Finishes and includes the new EHH2 Hi Hat controller.



r.e.d.box
Real • Electronic • Drums

The r.e.d.box module features 1000 sounds and 150 programs that covers everything from Acoustic drums to Hybrid combinations. And if that wasn't enough, you can use it as an acoustic kit, electronic kit or create a hybrid combination of both that gives you endless possibilities.

ePRO COCKTAIL KIT A MODERN VERSION OF OLD SCHOOL DESIGN

- The first multi zone Electronic Cocktail Kit utilizing the Pearl r.e.d.box Module
- Setup with 7 programmable triggers that can be assigned with any of the 1000 sounds in the Redbox module
- The layering capability can produce endless possibilities for percussion and drum set design
- Can be used by drummers and percussionists who want to have the real look and feel on stage



EPCTK1424/SC
#400 WHITE MARINE PEARL

EPCTK1424/SC
#402 ABALONE

TRUTRAC PACK + CYMBALS

Pearl's TruTrac Electronic Drumheads are available in pre-packs and individual components so you can convert your own acoustic kit into an electronic kit. Both pre-packs include (5) No Drill Adapters and all necessary parts and tools to complete your kit's conversion from acoustic to electronic. Connect the pads to your favorite module, Hi-Hat controller and cymbals to enhance your current electronic kit, and you're good to go!



TruTrac Pack Conversion Kits are available in two configurations: 10/12/16/14/Bass and 12/13/16/14/Bass.



No-Drill adapters connect through your air vent with no soldering or drilling required.



Insert the longer supplied tension rods into your existing hoops and tighten them just enough to secure the TruTrac Electronic Drumhead.

SSC924XUP/C
#389 MATTE LIQUID AMBER
WITH EPADRB25S CONVERSION KIT



TRUTRAC HI-HAT



EHH2
TRUTRAC HI-HAT



The TruTrac hi-hat is designed to replicate the look and feel of its acoustic counterpart. It follows a traditional approach mounting on any acoustic hi-hat stand. The TruTrac Hi-Hat uses top and bottom cymbals with full motion for a natural playing experience. When combined with the r.e.d.box sound module, it produces sounds from open to closed, half-open and three quarter positions plus "chik" and splash. Pearl designed the TruTrac Hi-Hat to be the perfect upgrade for ePro Live and the TruTrac Pad conversion kits.

drumlite™

DRUMLITE
PUTTING THE SPOTLIGHT BACK ON THE DRUMMER!

- The Drumlite banded LED illumination system is a quick, easy way to customize any drum set, and bring stage focus back where it belongs: on YOU!
- Each shock-mounted, fitted LED strip installs quickly on any drum with no soldering, drilling, or modification to the shell.
- Light bands interlock with tour-ready XLR connectors for flexible expansion and positioning
- Illuminates drum shell interior with up to 16 different colors
- Choose from four Flashing or Fading programmed presets
- On one or multiple drums in your set-up, Drumlite lets you create a unique statement that will outshine the rest!



DUAL-BAND LED DRUMSET LIGHTING SYSTEMS

- DLK1D Dual LED Lighting Kit for 12x9, 14x14, 16x16, 22x18
- DLK2D Dual LED Lighting Kit for 10x8, 12x9, 16x16, 22x18
- CONTENTS: Dual Flexible RGB LED Strip Lights for Each Drum, Connector Mounts, LED Controller with Wireless Remote, Multi-Position XLR Cable Snake, A/C Adapter

SINGLE-BAND LED DRUMSET LIGHTING SYSTEMS

- DLK1S Single LED Lighting Kit for 12x9, 14x14, 16x16, 22x18
- DLK2S Single LED Lighting Kit for 10x8, 12x9, 16x16, 22x18
- CONTENTS: Single Flexible RGB LED Strip Lights for Each Drum, Connector Mounts, LED Controller with Wireless Remote, Multi-Position XLR Cable Snake, A/C Adapter

BASS DRUM LED DRUMSET LIGHTING SYSTEMS

- DLK20 Single LED Lighting Kit for 20" bass drum
- DLK22 Single LED Lighting Kit for 22" bass drum
- DLK24 Single LED Lighting Kit for 24" bass drum
- CONTENTS: Single Flexible RGB LED Strip Light, Connector Mount, LED Controller with Wireless Remote, 10' XLR Cable, A/C Adapter



tune-bot™
TUNE-BOT



TB001

Every guitar player has an electronic tuner for speed and accuracy in tuning. Tuning a drum is much more time consuming and difficult... until now. Overtone Labs created a fast, accurate and effective electronic drum tuner that will change the way you tune and sound.

- Measures True Fundamental and Lug-To-Lug Pitch
- Interval Tuning of Toms
- Displays Pitch in Hertz and Musical Notes
- Saves Tunings for Over 20 Drums
- Conveniently Clips to Drum Hoop



TBG001

tune-bot™
TUNE-BOT GIG

The Gig features a large LCD display and is optimized for ease of use in the studio, on stage or in your practice room at home. The redesigned clip easily attaches to any standard drum hoop and the new silver body is easier to spot in your gig bag.

- New Streamlined Design
- Lug Pitch Measurement
- Overall Pitch Measurement
- Frequency and Note Modes
- Overtone Filters
- Difference Mode

DRUM MONITORS



PDM250

Pearl's Precision Drum Monitors are a closed dynamic headphone of exceptional quality suitable for the most demanding professional applications. Based on the highly acclaimed Beyer Dynamic DT770 Pro, Pearl's PDM250 has been custom engineered as the ultimate drum monitoring headphone for recording studios, post production, or broadcasting situations.



THM1

THRONE THUMPER

Compatible with any electronic drum set and attachable to any throne. The Throne Thumper is equally at home vibrating your kit's low frequencies to you as you practice, or letting you feel the bass player's groove in a live show environment where hearing the other musicians is tough. Installation is easy and coupled with Pearl's Precision Drum Monitors, you'll hear every sonic nuance that your kit produces.

DRUMOMETER



DR2000

The Drumometer Model II measures a drummer's technical accuracy, hand or foot speed, and endurance by counting the total number of strokes a drummer can play within a preset time (1 to 900 seconds). It's a very progressive practice tool to help develop a relaxed playing style, strengthen endurance, and improve your sense of timing. The Drumometer is an effective teaching device for any drum instructor as students have a tangible goal to surpass.

Technical accuracy can only be measured by creating consistent and relaxed strokes and the Drumometer will show you exactly how well a pattern is being executed.



ADRIAN BENT
DRAKE



AREJAY HALE
HALESTORM



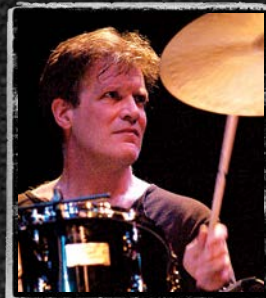
ARIËN VAN WEENSENBEEK
EPICA



BAARD KOLSTAD
LEPROUS



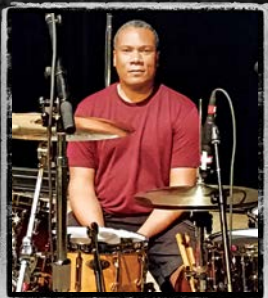
BARRY KERCH
SHINEDOWN



GARY HUSBAND
INDEPENDENT



GENE HOGLAN
TESTAMENT / DETHKLOK



GENE LAKE
BOZ SCAGGS



GEORGE KOLLIAS
NILE



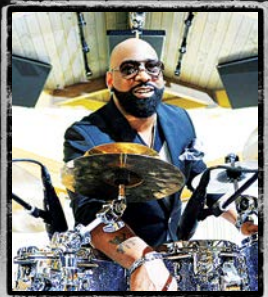
GRANT COLLINS
INDEPENDENT



BEN JOHNSTON
BIFFY CLYRO



BRIAN FRASIER-MOORE
MADONNA



CALVIN RODGERS
FRED HAMMOND



CASEY COOPER
COOP3RDRUMM3R



BRIAN VODINH
10 YEARS



HORACIO HERNANDEZ
LATIN LEGEND



IAN PAICE
DEEP PURPLE



IGOR CAVALERA
CAVALERA CONSPIRACY



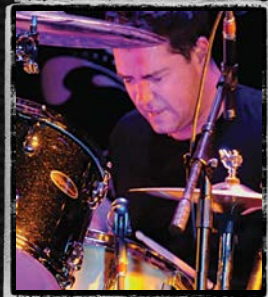
INFERNO
BEHEMOTH



JAMIE PERKINS
THE PRETTY RECKLESS



CASEY GRILLO
KAMELOT



CHAD GRACEY
LIVE



CHAD SEXTON
311



CHAD SMITH
RED HOT CHILI PEPPERS



CHRIS RALLES
PAT BENATAR



JASKA
CHILDREN OF BODOM



JASON BITTNER
SHADOWS FALL/FLOTSAM & JETSAM



JASON HARTLESS
INDEPENDENT



JEN LEDGER
SKILLET



JEREMY SPENCER
FIVE FINGER DEATH PUNCH



CODY DICKINSON
NORTH MISSISSIPPI ALLSTARS



CODY HANSON
HINDER



DANI LOBLE
HELLOWEEN



DANIEL ERLANDSSON
ARCH ENEMY



DAVID AGOLIA
REV THEORY



JEREMY STRATTON
HED P.E.



JESSIE CARABALLO
MARC ANTHONY



JIMMY HILL
FANTASIA



JOE TOMINO
MATISYAHU/DUB TRIO



JOEY BACA
THE CONTORTIONIST



DAVID BLACK
EASTON CORBIN



DENNIS CHAMBERS
DRUMMING LEGEND



EMAN CERVANTES
ANDY GRAMMER



ERIC SINGER
KISS



FLO MOUNIER
CRYPTOPSY



JOEY JORDISON
INDEPENDENT



JOEY KRAMER
AEROSMITH



JOHN LONGSTRETH
ORIGIN



JON LARSEN
VOLBEAT



JONATHAN MOYER
INDEPENDENT



JOSH "CHACHI" MARUNDE
POP EVIL



KAI HAHTO
NIGHTWISH



KENWOOD DENNARD
INDEPENDENT



KRIS MYERS
UMPHREY'S MCGEE



MARK ALFRED
RIVERDANCE



ROBBY AMEEN
INDEPENDENT



ROBERT ORTIZ
ESCAPE THE FATE



RODNEY HOWARD
AVRIL LAVIGNE



RYAN MORAN
SLIGHTLY STOOPID



RYAN VAN POEDEROOYEN
DEVIN TOWNSEND PROJECT



MARK BRZEZICKI
BIG COUNTRY



MARVIN "SMITTY" SMITH
INDEPENDENT



MATT ABTS
GOVT MULE



MELVIN BALDWIN
JUSTIN BIEBER/NEW EDITION



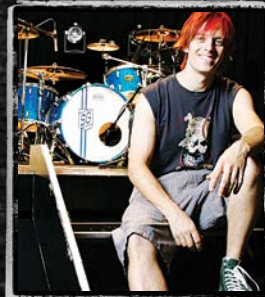
MICHAEL CARTELLONE
LYNYRD SKYNYRD



SAM LOEFFLER
CHEVELLE



SCOTT ROCKENFIELD
QUEENSRYCHE



SHANE GAALAAS
B'Z/COSMOSQUAD



SHAUN FOIST
BREAKING BENJAMIN



STEVEN PULLEY
SAVING ABEL



MIKE COOLEN
WITHIN TEMPTATION



MIKE MANGINI
DREAM THEATER



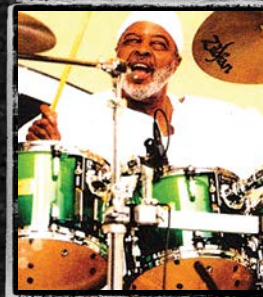
MIKE REID
RIHANNA/DEMI LOVATO



MIKE WENGTEN
DISTURBED



MIKKO SIREN
APOCALYPTICA



STIX HOOPER
THE CRUSADERS



TERENCE HIGGINS
WARREN HAYNES/ANI DIFRANCO



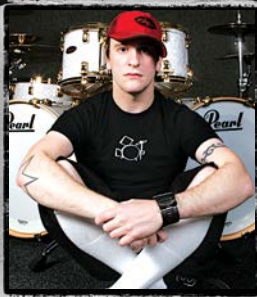
TODD SUCHERMAN
STYX



TOMMY LEE
MÖTLEY CRÜE



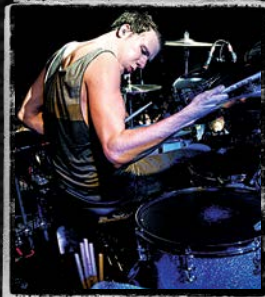
TOMMY PORTIMO
SONATA ARCTICA



MOOSE
BULLET FOR MY VALENTINE



MORGAN ROSE
SEVENDUST



MORITZ MUELLER
THE INTERSPHERE



NATE MORTON
THE VOICE



OMAR HAKIM
INDEPENDENT



TONY PALERMO
PAPA ROACH



TRACY BROUSSARD
BLAKE SHELTON



TRAVIS ORBIN
DARKEST HOUR



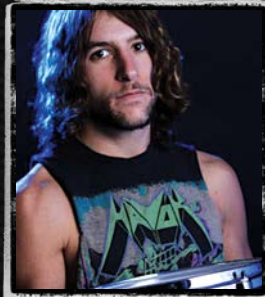
TRE STAFFORD
ADELITAS WAY



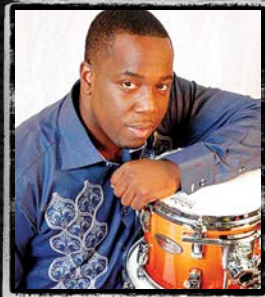
VITO REZZA
INDEPENDENT



PAUL KOEHLER
SILVERSTEIN



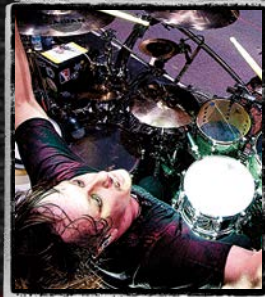
PETE WEBBER
HAVOK



QUINTON ROBINSON
INDEPENDENT



RANDY BLACK
DUSKMACHINE



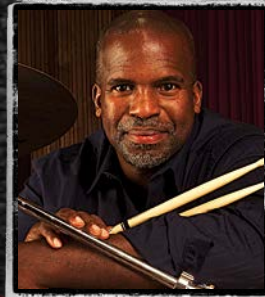
RAY LUZIER
KORN/KXM



WES LITTLE
ROBBEN FORD



WILL HUNT
EVANESCENCE



WILL KENNEDY
YELLOWJACKETS



WUV
P.O.D.



YONRICO SCOTT
DEREK TRUCKS BAND

REFERENCE SNARE DRUMS

THE ULTIMATE STABLE OF SNARES.

SERIES COMPONENT SNARE DRUMS

MASTERS, SESSION, DECADE, & SENSITONE SNARES. CLASSIC PEARL SOUND.



RFP1465S/C	SIZE 14" x 6.5"
SHELL	6 ply: Maple 4 + Birch 2
HOOPS	FatTone (FH1410/1410S)
LUGS	STL65
TENSION RODS	SST5047 Stainless Steel
STRAINER	SR1000 Glide-Lock Strainer
SNARES	SN1420D Ultra-Sound "D" type



RFP1450S/C	SIZE 14" x 5"
SHELL	6 ply: Maple 4 + Birch 2
HOOPS	FatTone Hoops (FH1410/1410S)
LUGS	STL55L
TENSION RODS	SST5047 Stainless Steel
STRAINER	SR1000 Glide-Lock Strainer
SNARES	SN1420D Ultra-Sound "D" type



RFP1365S/C	SIZE 13" x 6.5"
SHELL	6 ply: Maple 4 + Birch 2
HOOPS	FatTone Hoops (FH1308/1308S)
LUGS	STL65
TENSION RODS	SST5047 Stainless Steel
STRAINER	SR1000 Glide-Lock Strainer
SNARES	SN1320D Ultra-Sound "D" type



MRV1455S	SIZE 14" x 5.5"
SHELL	4 Ply Maple w/4 ply Maple R-Rings
HOOPS	FatTone (FH1410/1410S)
LUGS	STL65
TENSION RODS	SST5047 Stainless Steel
STRAINER	SR017
SNARES	S022N



MCT1455S	SIZE 14" x 5.5"
SHELL	6 Ply Maple (5.4mm)
HOOPS	SuperHoop II (SH1410B/1410S)
LUGS	CL55
TENSION RODS	T062
STRAINER	SR017
SNARES	S022N



SSC1455S/C	SIZE 14" x 5"
SHELL	6 ply 7.5mm Birch/Kapur
HOOPS	SuperHoop II (SH1410B/1410S)
LUGS	CL55
TENSION RODS	T062
STRAINER	SR017
SNARES	S022N



RF1465S/B	SIZE 14" x 6.5"
SHELL	20 ply: Maple 14+Birch 6
HOOPS	MasterCast (DC1410/1410S)
LUGS	BRL65
TENSION RODS	SST5047 Stainless Steel
STRAINER	SR1000 Glide-Lock Strainer
SNARES	SN1420D Ultra Sound "D" type



RF1450S/C	SIZE 14" x 5"
SHELL	20 ply: Maple 14+Birch 6
HOOPS	MasterCast (DC1410/1410S)
LUGS	BRL55
TENSION RODS	SST5047 Stainless Steel
STRAINER	SR1000 Glide-Lock Strainer
SNARES	SN1420D Ultra Sound "D" type



RF1365S/C	SIZE 13" x 6.5"
SHELL	20 ply: Maple 14+Birch 6
HOOPS	MasterCast (DC1308/1308S)
LUGS	BRL (8)
TENSION RODS	SST5047 Stainless Steel
STRAINER	SR1000 Glide-Lock Strainer
SNARES	SN1320D Ultra Sound "D" type



MRV1465S	SIZE 14" x 6.5"
SHELL	4 Ply Maple w/4 ply Maple R-Rings
HOOPS	FatTone (FH1410/1410S)
LUGS	STL55
TENSION RODS	SST5055 Stainless Steel
STRAINER	SR017
SNARES	S022N



MCT1465S	SIZE 14" x 6.5"
SHELL	6 Ply Maple (5.4mm)
HOOPS	SuperHoop II (SH1410B/1410S)
LUGS	CL65
TENSION RODS	T062
STRAINER	SR017
SNARES	S022N



SSC1465S/C	SIZE 14" x 6.5"
SHELL	6 ply 7.5mm Birch/Kapur
HOOPS	SuperHoop II (SH1410B/1410S)
LUGS	CL65
TENSION RODS	T061L
STRAINER	SR017
SNARES	S022N



RFB1465	SIZE 14" x 6.5"	RFB1450	SIZE 14" x 5"	RFS1465	SIZE 14" x 6.5"	RFS1450	SIZE 14" x 5"
SHELL	3mm Brass	SHELL	3mm Brass	SHELL	2.5mm Cast Steel / 2.5mm R-Ring	SHELL	2.5mm Cast Steel / 2.5mm R-Ring
HOOPS	MasterCast (DC1410/1410S)	HOOPS	MasterCast (DC1410/1410S)	HOOPS	MasterCast (DC1410/1410S)	HOOPS	MasterCast (DC1410/1410S)
LUGS	BRL65	LUGS	BRL55	LUGS	BRL65	LUGS	BRL55
TENSION RODS	SST5047 Stainless Steel	TENSION RODS	SST5047 Stainless Steel	TENSION RODS	SST5047 Stainless Steel	TENSION RODS	SST5047 Stainless Steel
STRAINER	SR1000 Glide-Lock Strainer	STRAINER	SR1000 Glide-Lock Strainer	STRAINER	SR1000 Glide-Lock Strainer	STRAINER	SR1000 Glide-Lock Strainer
SNARES	SN1420D Ultra-Sound "D" type	SNARES	SN1420D Ultra-Sound "D" type	SNARES	SN1420D Ultra-Sound "D" type	SNARES	SN1420D Ultra-Sound "D" type



DMP1455S	SIZE 14" x 5.5"
SHELL	6 Ply Maple (5mm)
HOOPS	1.6mm Steel (RH1408/1408S)
LUGS	NDL55/C
TENSION RODS	SST5047
STRAINER	SR700
SNARES	SNW1420



SSI1455S/C	SIZE 14" x 5.5"
SHELL	1mm Steel
HOOPS	1.6mm Steel (RH1408/1408S)
LUGS	TLS55
TENSION RODS	TR5052
STRAINER	SR900
SNARES	SNW1420



SENSITONE SNARE DRUMS

CLASSIC, RELIABLE SNARE POWER.

The Sensi Tone sound is a necessity. Vital, immediate snare tone that has recalls the chart-topping legends of yesterday, but with a undeniably modern sensibility. Classic beaded shells in Steel, Nickel-Plated Brass, and Seamless Aluminum deliver the goods and the right gig-ready touches make them utility standards for the power player.



SEE AND HEAR
ALL 6 SENSITONE SNARE DRUMS
pearldrums.com/2minute



SEE AND HEAR
ALL 7 SENSITONE PREMIUM DRUMS
pearldrums.com/2minute



• Crisp, sensitive high-pitched snap.

STA1450S	SIZE 14" x 5"
SHELL	1mm Beaded Steel
HOOPS	SuperHoop II (SH1410B/1410S)
LUGS	TB55
TENSION RODS	SST5047
STRAINER	SR150
SNARES	SN1420I



• Perfect blend of attack and brassy body.

STA1450BR	SIZE 14" x 5"
SHELL	1mm Beaded Brass
HOOPS	SuperHoop II (SH1410B/1410S)
LUGS	TB55
TENSION RODS	SST5047
STRAINER	SR150
SNARES	SN1420I



• Dry, focused crack with quick decay.

STA1450AL	SIZE 14" x 5"
SHELL	1.2mm Beaded Seamless Aluminum
HOOPS	SuperHoop II (SH1410B/1410S)
LUGS	TB55
TENSION RODS	SST5047
STRAINER	SR150
SNARES	SN1420I



• Belting crack with mild midrange overtone.

STA1465S	SIZE 14" x 6.5"
SHELL	1mm Beaded Steel
HOOPS	SuperHoop II (SH1410B/1410S)
LUGS	TB65
TENSION RODS	SST5047
STRAINER	SR150
SNARES	SN1420I



• An elegant solution for punch and warmth.

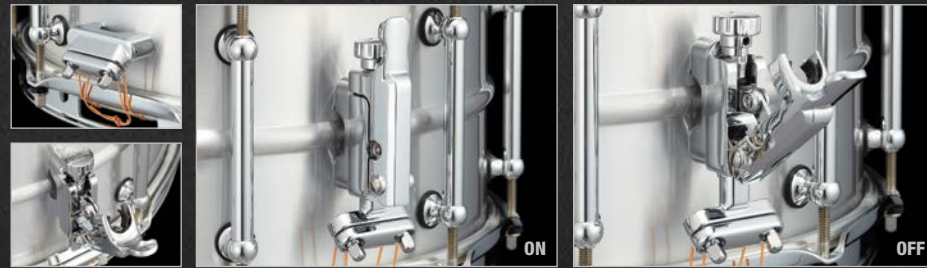
STA1465BR	SIZE 14" x 6.5"
SHELL	1mm Beaded Brass
HOOPS	SuperHoop II (SH1410B/1410S)
LUGS	TB65
TENSION RODS	SST5047
STRAINER	SR150
SNARES	SN1420I



• Full, guttural snare bellow with little overtone.

STA1465AL	SIZE 14" x 6.5"
SHELL	1.2mm Beaded Seamless Aluminum
HOOPS	SuperHoop II (SH1410B/1410S)
LUGS	TB65
TENSION RODS	SST5047
STRAINER	SR150
SNARES	SN1420I

Throw-Off System: SR150 Strainer
The secret behind Pearl's new patent pending Click-Lock Strainer System is a "C"-shape clip that clicks onto the tension dial. This prevents the lever from disengaging, and the tension dial from loosening, even if the tension is very low. A Polymer bearing on the axle provides smooth and accurate action, and reliably quick response from the lever. (U.S. Patent #9082376)



SENSITONE PREMIUM SNARE DRUMS

IMMACULATE PERCUSSION.



• Bright and responsive with lively overtone.

STA1450FB	SIZE 14" x 5"
SHELL	1.5mm Beaded Brass
HOOPS	SuperHoop II (SH1410B/1410S)
LUGS	ARL55
TENSION RODS	SST5047
STRAINER	SR150
SNARES	SN1420I



• Bold projection with controlled ring sustain.

STA1465FB	SIZE 14" x 6.5"
SHELL	1.5mm Beaded Brass
HOOPS	SuperHoop II (SH1410B/1410S)
LUGS	ARL65
TENSION RODS	SST5047
STRAINER	SR150
SNARES	SN1420I



• Musical and penetrating with mid-range power.

STA1450PB	SIZE 14" x 5"
SHELL	1.2mm Phosphor Bronze
HOOPS	SuperHoop II (SH1410B/1410S)
LUGS	ARL55
TENSION RODS	SST5047
STRAINER	SR150
SNARES	SN1420I



• Bellowing low-end whallop with smooth articulation.

STA1465PB	SIZE 14" x 6.5"
SHELL	1.2mm Phosphor Bronze
HOOPS	SuperHoop II (SH1410B/1410S)
LUGS	ARL65
TENSION RODS	SST5047
STRAINER	SR150
SNARES	SN1420I

Sensi Tone Premium

Engineered for performance perfection, Sensi Tone Premium snare drums feature a choice of Patina Beaded Brass, Beaded Phosphor Bronze, or even-ply North American Maple shells. With 14" models available in 5" and 6.5" depths, the Premium line's newcomer is the new African Mahogany 15"x5" Baritone snare model, adding an additional voice to the tonal pallet.

Sensi Tone Premium's selection of refined percussion instruments truly demand a place of prestige, and are sure to be first-call drums for the stage, studio, and beyond.



Pearl's stylish new Arch-Tube Lugs come standard on all Sensi Tone Premium snares. The low-contact Arch casting includes two self-aligning swivel nuts rather than a contiguous tube. This allows for pristine tuning across the head and reduced margin for binding within the lug. (Patent Pending)



• Top-end projection with fat highs and mids.

STA1450MM	SIZE 14" x 5"
SHELL	6 ply 5.4mm Maple
HOOPS	SuperHoop II (SH1410B/1410S)
LUGS	ARL55
TENSION RODS	SST5047
STRAINER	SR150
SNARES	SN1420D



• Thick snare tone with suppressed mid-tonality.

STA1465MM	SIZE 14" x 6.5"
SHELL	6 ply 5.4mm Maple
HOOPS	SuperHoop II (SH1410B/1410S)
LUGS	ARL65
TENSION RODS	SST5047
STRAINER	SR150
SNARES	SN1420D



• The Baritone Snare; low-end tone with top-end snap.

STA1550MH	SIZE 15" x 5"
SHELL	4 ply 5mm African Mahogany*
HOOPS	SuperHoop II (SH1510B/1510S)
LUGS	ARL55
TENSION RODS	SST5047
STRAINER	SR150
SNARES	SN1520I

* w/ Maple Reinforcement Rings

SIGNATURE SNARE DRUMS

CAPTURE THE ELUSIVE SOUND OF YOUR DRUMMING IDOL.

EFFECT SNARE DRUMS

VERSATILE DRUMS FOR SECONDARY EFFECTS.



CHAD SMITH



CS1450	SIZE 14" x 5"
SHELL	Steel Shell
HOOPS	SuperHoop II (SH1410B/1410S)
LUGS	CL55
RODS	10
TENSION RODS	SST5047 Stainless Steel
STRAINER	SR015
SNARES	S022
FINISH	Black Nickel



CS1465F	SIZE 14" x 6.5"
SHELL	3 mm Brass / 3 mm Steel / 3 mm Brass
HOOPS	Die Cast (DC1410/1410S)
LUGS	FT65
RODS	10
TENSION RODS	SST5047 Stainless Steel
STRAINER	SR1000F
SNARES	SN1420I
FINISH	Clear Lacquer



- Three interchangeable 3mm rings are housed in Pearl's Free Floating snare frame
- Multiple tonal combinations when stacked in different order
- Total resonant freedom from attachment hardware



DENNIS CHAMBERS



DC1450S/N	SIZE 14" x 5"
SHELL	Cast Aluminum: 3mm w/ 2mm R. Rings
HOOPS	SuperHoop II (SH1412B/1408S)
LUGS	STL100
RODS	20
TENSION RODS	SST5047 Stainless Steel
STRAINER	SR020
SNARES	SN1420I
FINISH	Black Nickel Shell w/ Nickel Hardware



IAN PAICE



IP1465	SIZE 14" x 6.5"
SHELL	Beaded Steel Shell
HOOPS	SuperHoop II (SH1410B/1410S)
LUGS	TB65
RODS	10
TENSION RODS	SST5042 Stainless Steel
STRAINER	SR017
SNARES	S022
FINISH	Steel



JOEY JORDISON



JJ1365N	SIZE 13" x 6.5"
SHELL	Steel Shell
HOOPS	SuperHoop II (SHB1308/1308S)
LUGS	CL65B
RODS	8
TENSION RODS	SST5047 Stainless Steel
STRAINER	SR017
SNARES	S029N
FINISH	Custom Black



OMAR HAKIM



OH1350	SIZE 13" x 5"
SHELL	6 ply African Mahogany Shell
HOOPS	SuperHoop II (SH1308/1308S)
LUGS	CL55
RODS	8
TENSION RODS	SST5047 Stainless Steel
STRAINER	SR015
SNARES	S029N
FINISH	#140 Natural Mahogany

EFFECTS



M1060	SIZE 10" x 6"
SHELL	6 ply Maple
HOOPS	SuperHoop II (SH1006/1006S)
LUGS	CL65
RODS	6
TENSION RODS	SST5035 Stainless Steel
STRAINER	SR018
SNARES	S032N



M1270	SIZE 12" x 7"
SHELL	8 ply Maple
HOOPS	1.6mm Steel (RIM1208B/1208S)
LUGS	CL100
RODS	8
TENSION RODS	SST5047 Stainless Steel
STRAINER	SR018
SNARES	S031N



SFS10/C31	SIZE 10" x 4.5"
SHELL	6 Ply Poplar
HOOPS	1.6mm Steel (RIM1006RSH/RIM1006RSH)
LUGS	MSFL35
RODS	6
TENSION RODS	RSHT3240
STRAINER	SR02MSFL/SR02EMSFL
SNARES	SN10MSFL

PICCOLO



B1330	SIZE 13" x 3"
SHELL	Brass
HOOPS	1.6mm Steel (RIM1308B/1308S)
LUGS	CL05
RODS	8
TENSION RODS	T055
STRAINER	SR018
SNARES	S029N



S1330B	SIZE 13" x 3"
SHELL	Steel
HOOPS	1.6mm Steel (RIM1308B/1308S)
LUGS	CL05
RODS	8
TENSION RODS	T055
STRAINER	SR018
SNARES	S029N



M1330	SIZE 13" x 3"
SHELL	6 ply Maple
HOOPS	1.6mm Steel (RIM1308B/1308S)
LUGS	CL05
RODS	8
TENSION RODS	T055
STRAINER	SR018
SNARES	S029N

FIRECRACKER



FCP1250	SIZE 12" x 5"
SHELL	8 ply Poplar
HOOPS	1.6mm Steel (RIM1206/1206SL)
LUGS	CL50
RODS	6
TENSION RODS	T062
STRAINER	SR018
SNARES	S031



FCS1050	SIZE 10" x 5"
SHELL	1.0mm Steel
HOOPS	1.6mm Steel (RIM1006/1006SL)
LUGS	CL50
RODS	6
TENSION RODS	T062
STRAINER	SR018
SNARES	S032



The compact SR018 Strainer features direct-pull geometry for crisp and articulate snare response.

DEMON DRIVE/CHAIN DRUM PEDALS

THE FASTEST, SMOOTHEST, MOST POWERFUL PEDALS IN THE WORLD.

THE HARDWARE DRUMTECHS

Respect



LEVI DICKERSON
HINDER TECH

WUV
P.O.D.

CODY HANSON
HINDER



SEE AND HEAR
DEMON DRIVE & DEMON CHAIN PEDALS
pearldrums.com/2minutepedals

FEATURING:
MIKE REID
RIHANNA

AREJAY HALE
HALESTORM

No one knows hardware better than the guys who handle it night after night, city after city. Set it up, tear it down. **EQUIPMENT FAILURE IS NOT AN OPTION, END OF STORY.**

Pearl's hardware is LEGENDARY. So rugged, sure-footed, and built to last that we back it up with PEARL'S EXCLUSIVE Lifetime Warranty.

A choice of 2 positions for a finesse or power feel. Simply loosen the clamshell to change position. U.S. Patent #7579540



INDEPENDENT BEATER ANGLE AND FOOTBOARD HEIGHT ADJUSTMENTS

P3000D

- (shown in longboard set up)
- P3000D: Single Pedal Complete
- P3002D: Double Pedal Complete (right footed)
- P3001D: Double Pedal Conversion Kit (right footed)
- P3002DL: Double Pedal Complete (left footed)

BEATER HEIGHT ADJUSTMENT
PERFECT CIRCLE CAM

PIVOTING HOOP CLAMP

NINJA BEARINGS

MULTI FUNCTION DRUM KEY

- P3000C: Single Pedal Complete
- P3002C: Double Pedal Complete (right footed)
- P3001C: Double Pedal Conversion Kit (right footed)
- P3002CL: Double Pedal Complete (left footed)



DEMON CHAIN

TRADITIONAL FEEL & POWER OF A CHAIN

The Demon Chain pedal combines all of the innovative features of the Demon Drive pedal with all the power, speed, and traditional feel that so many players demand. The Perfect Circle cam provides a smooth consistent response throughout the entire range of the stroke for pinpoint accuracy and control. If you demand the feel of a chain drive in a high performance package, take the Demon out for a test drive.

DEMON DRIVE

UNLEASH THE DEMON

The Demon Drive is without a doubt the most thoroughly engineered bass drum pedal the World has ever seen. Lightning fast power and silky smooth finesse make this the choice of some of the most prolific drummers in the world. An amazing array of adjustable features turns this pedal into an extension of your body. From beater angle, traction plate grip, and footboard height and angle, it's all your choice. And when you feel the need for speed the Demon quickly converts to a double pedal with a simple add on pack. Unleash the Demon and find out what custom feel is all about.

P3002D

Direct Drive Double Pedal (shown in longboard setting)



The Click-Lock prevents the tension knob from loosening no matter how hard you play. Simply flip up for adjustment. U.S. Patent #7754953



The Demon Drive beater features a Control Core elastomer center that eliminates unwanted vibration. U.S. Patent #7626108



The two position Direct Link adjusts for a choice of light or heavy feel. This creates the most seamless link between the player's musical ideas and their execution on a bass drum.

The most unique feature of the Demon Drive pedal is Pearl's exclusive Duo-Deck Footboard, the world's first convertible footboard. Through a simple adjustment, the footboard can be adjusted from a traditional shortboard to a longboard pedal in seconds, offering a slightly lighter, quicker feel that is the preferred setup when speed is a necessity. U.S. Patent #7626107

The NINJA Bearings were originally designed by skateboarding engineers. These bearings feature micro-polished steel balls for amazing speed and incredible smoothness.



P3002C

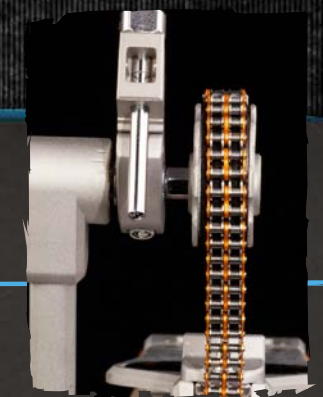
Chain Drive Double Pedal (shown in shortboard setting)



The Z-Link Drive Shaft features Pearl's exclusive Zero Latency Universal Joints that use precision radial ball bearings and hand-assembled CNC machined frames for zero play and smoothness that allows your slave pedal to respond as quickly and precisely as your primary.



The "linear-response" Perfect Circle Cam provides consistent and smooth feel throughout the entire stroke for pinpoint accuracy and superb control. The racing-inspired Cam is designed to minimize mass and maximize speed and power transfer.

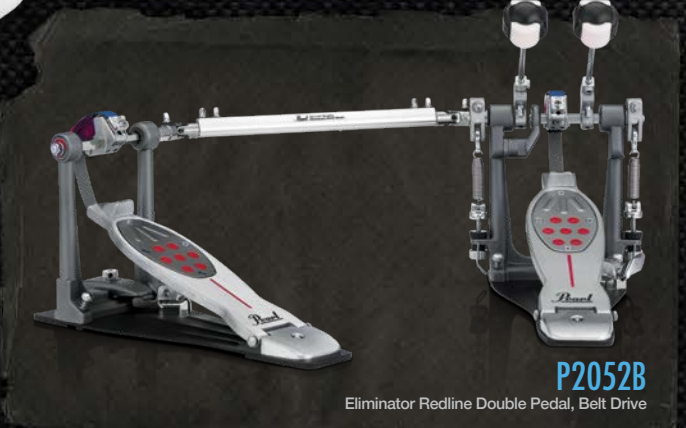


The Demon Chain Pedal is driven by the ultra-lightweight Power Chain with low-friction rollers for speed, and double chain construction for power and dependability. The orange anodized link plates identify the Demon Chain as a member of the Demon family of pedals.

ELIMINATOR REDLINE PEDAL

THE KEY TO ULTIMATE BASS DRUM PERFORMANCE.

ELIMINATOR REDLINE



CHOOSE A CAM, REDLINE YOUR PERFORMANCE

Pearl's original PowerShifter Eliminator was a giant leap ahead in bass drum pedals. The world's only pedal featuring the patented Interchangeable Cam System, Eliminator's virtually unlimited tunability lets the player lock in totally personalized feel, power and speed.

The Eliminator: Redline is the next step forward. Like having four pedals in one, Redline fuses the stunning power and flexibility of the original Eliminator with the fluid speed of our Demon series pedals. With a host of radical improvements, Eliminator: Redline helps unlock perfect feel by locking in a cam, further pushing the boundaries of bass drum performance.



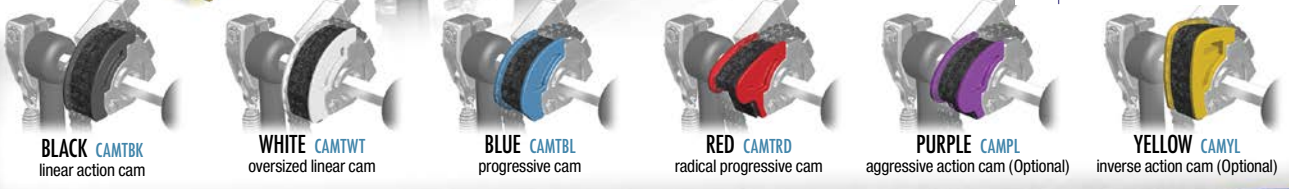
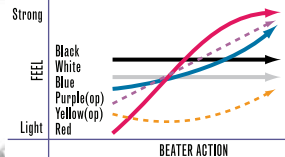
Eliminator Redline Series pedals come standard with Custom Carry bags.

P2050C
Eliminator Redline Single Pedal, Chain Drive

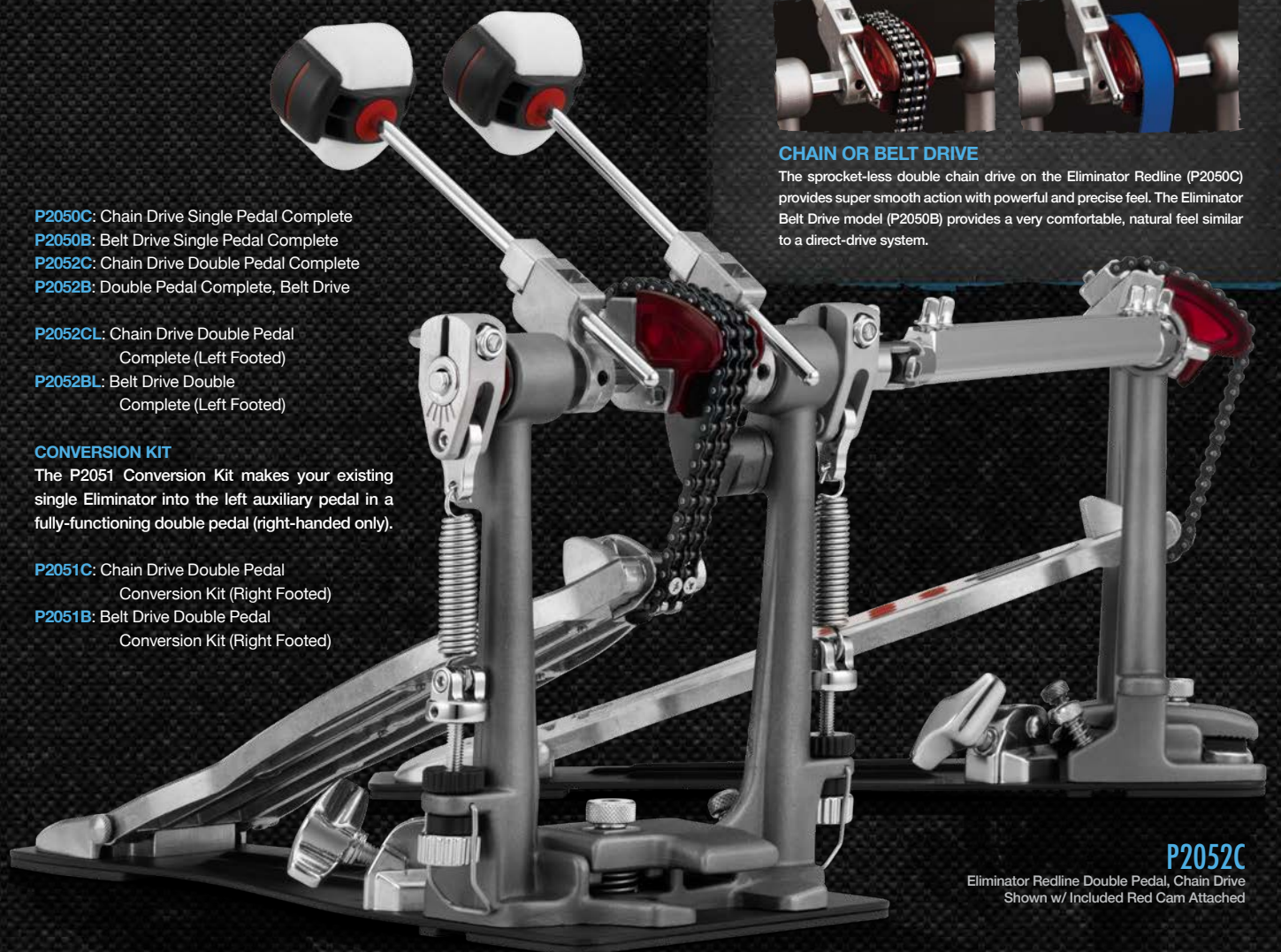
ELIMINATOR REDLINE

INTERCHANGEABLE CAM SYSTEM US.PAT.#6172291

Pearl's exclusive cam system provides a choice of 6 different color-coded cams (4 included and 2 more optional) allowing you to quickly change the power and feel of the pedal to suit your individual playing needs. Changing from cam to cam is as simple as pushing the release button and snapping another in place.



CHAIN OR BELT DRIVE
The sprocket-less double chain drive on the Eliminator Redline (P2050C) provides super smooth action with powerful and precise feel. The Eliminator Belt Drive model (P2050B) provides a very comfortable, natural feel similar to a direct-drive system.



P2052C
Eliminator Redline Double Pedal, Chain Drive Shown w/ Included Red Cam Attached



INDEPENDENT TRACTION GRIPS
Eliminator Redline's redesigned pedalboard features Pearl's exclusive reversible Traction Plate insert, allowing individual traction grip configuration to suit your exact playing requirements.



ZERO PLAY HINGE
Our proprietary stainless steel hinge provides maximum freedom of motion for blazing speed and prevents play between the footboard and heel.
U.S. Patent #7179978



NiNja BEARINGS
Developed by skateboarding engineers for the ultimate in fast, quiet performance, NiNja Bearings incorporate state-of-the-art micro-polished steel balls for incredibly fast and smooth performance.



ROLLER HOOP CLAMP
w/ Side Mount Adjustment. Quickly adapts to a wide range of hoop thicknesses for the smoothest, most secure grip possible. Easy side access to the hoop clamp makes set up and tear down a breeze.
U.S. Patent #5726370



THE CONTROL CORE QUADBEATER
With a reduced profile, Pearl's improved QuadBeater provides the same four beater surfaces of the original (two hard plastic, two felt) but with the added feel and power of the Control Core elastomer center to eliminate vibration. U.S. Patent #5610351 U.S. Patent #7626108



CLICK-LOCK SPRING ADJUSTMENT
w/ NEW Rotor Tension Cradle. Locks the desired spring settings into place and prevents tension creep under play. The counter spring adjustment's rolling cradle allows the spring to pivot with each stroke for less resistance. U.S. Patent #7754953



POWERSHIFTER FUNCTION
By moving the footboard forward or back, our revolutionary PowerShifter function provides 3 positions to fine tune the power and feel of the pedal. Instantly change the drive angle leverage to create a light, regular, or strong feel. U.S. Patent #5574237



UNI-LOCK BEATER ANGLE CAM
Grips the axel a full 360 degrees and allows infinite beater angle adjustments. Features the Floating Spring Pendulum design that is perfectly centered on the clamp for full bearing movement and maximum smoothness.

P930/P932 DRUM PEDALS

SPEED & CONTROL FOR THE MASSES.

SUPER SMOOTH, EXTREMELY FAST!

Pearl's P930 merges many of the advanced features of our Flagship Demon Drive with our Award winning Eliminator line to create a bass drum pedal never before available in this price range.

High end performance inspired from our Demon Drive like the longboard footboard, Control Core beater and our Click-Lock spring tension keepers combine with our PowerShifter and Eliminator style cam technology that uses our Perfect Circle cam with a removable Orange Progressive Cam for fully tunable performance and lightning speed and control.

If you want fast feet and you're on a budget, step up to Pearl's P930 - the ultimate pedal.

CONTROL CORE DUO BEATER

U.S. Patent #7626108

Our Control Core Beater utilizes our Control Core elastomer center to minimize vibration. It features 2 unique striking surfaces, a slightly rounded felt and a slightly convex hard plastic surface.

POWERSHIFTER FUNCTION

U.S. Patent #5574237

Our PowerShifter function provides 2 positions to fine tune the power and feel of the pedal. By moving the footboard forward or back, you change the chain angle, thus changing the leverage to create a light, or strong feel.

2 POSITION
POWERSHIFTER
FUNCTION

CONTROL CORE BEATER

BEATER HEIGHT
ADJUSTMENT

INTERCHANGEABLE
CAM TECHNOLOGY

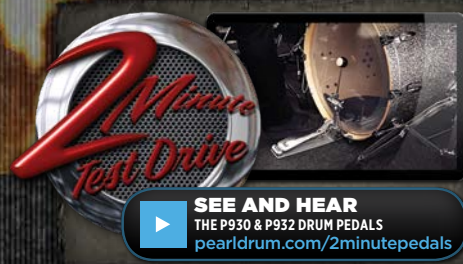
INFINITE BEATER
ANGLE ADJUSTMENT

CLICK LOCK
SPRING TENSION

P930: Single Pedal Complete
P932: Double Pedal Complete (right footed)
P931: Double Pedal Conversion Kit (right footed)
P932L: Double Pedal Complete (left footed)

P930

Single Pedal Complete



SEE AND HEAR
THE P930 & P932 DRUM PEDALS
pearldrums.com/2minutepedals

MARK BENNETT
BARRY'S TECH

BARRY KERCH
SHINEDOWN



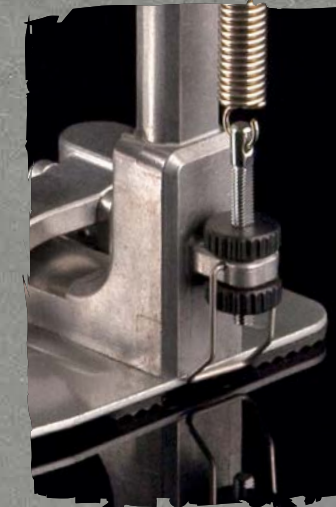
P932

Double Pedal Complete

What's better than double the speed, power and control of our P930? Nothing. The P932 *Demon Deuce* gives the gift of amazing feet for a fraction of the cost of other "less innovative" pedals.



The Orange Progressive Cam can be removed to reveal the Perfect Circle for further tunability to match your playing style. U.S. Patent #6172291



Click-Lock spring tension maintains perfect tension gig after gig. Set it and forget it. U.S. Patent #7754953

The P930 pedal is included as an upgrade in the 830 Series hardware pack and comes with Export and Export Lacquer drum sets.



HI-HAT STANDS

THE BIGGEST ADVANCEMENT IN TIME KEEPING SINCE THE WRISTWATCH.

JAMES JR. NEWKIRK
BRIAN'S TECH

BRIAN FRASIER MOORE
MADONNA



The Super Grip's slip-proof clutch system features a patented 360° lock nut that provides vice-like clamping force for super grip.
U.S. Patent #7326843 & #7078606

H2050

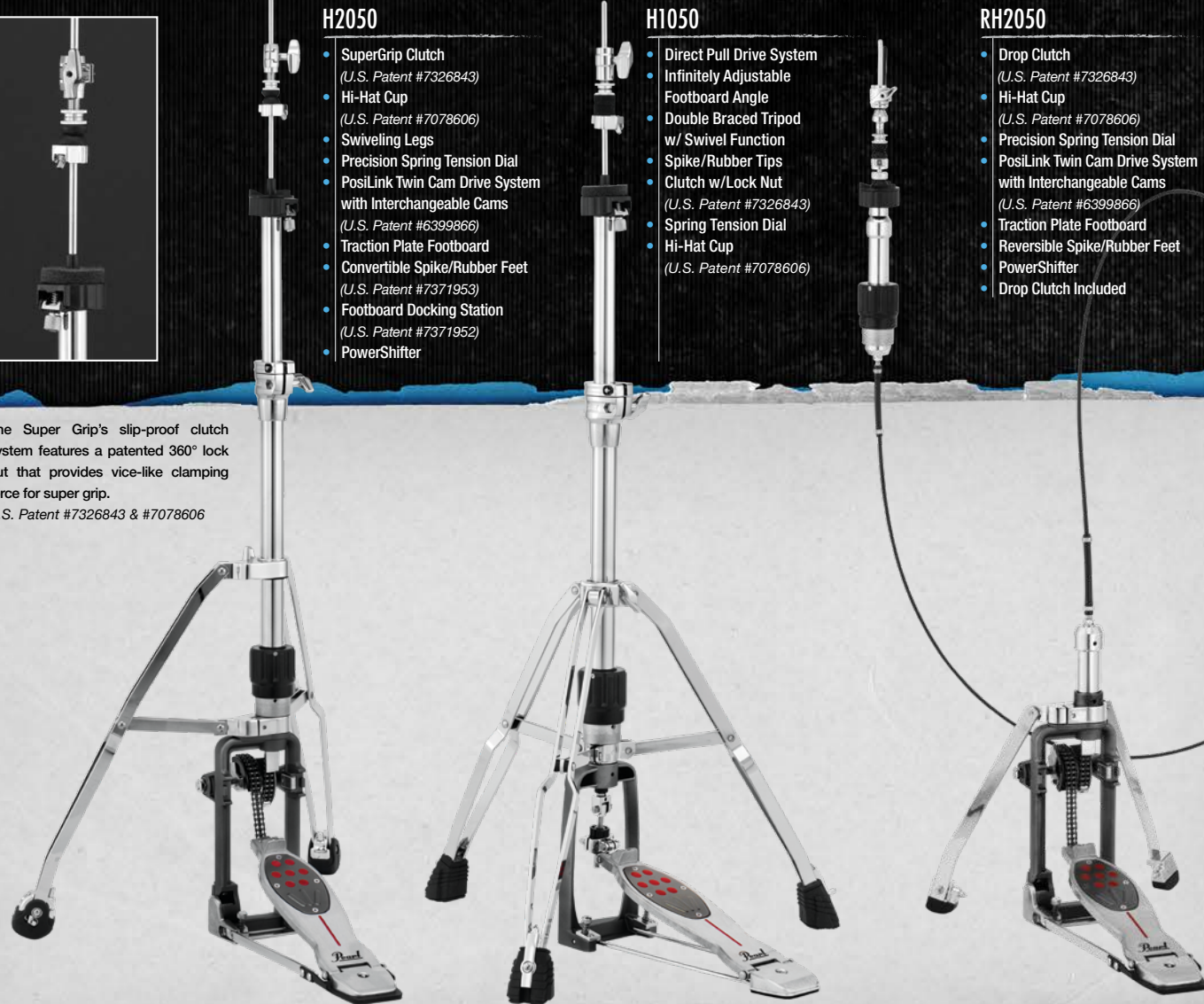
- SuperGrip Clutch (U.S. Patent #7326843)
- Hi-Hat Cup (U.S. Patent #7078606)
- Swiveling Legs
- Precision Spring Tension Dial
- PosiLink Twin Cam Drive System with Interchangeable Cams (U.S. Patent #6399866)
- Traction Plate Footboard
- Convertible Spike/Rubber Feet (U.S. Patent #7371953)
- Footboard Docking Station (U.S. Patent #7371952)
- PowerShifter

H1050

- Direct Pull Drive System
- Infinitely Adjustable Footboard Angle
- Double Braced Tripod w/ Swivel Function
- Spike/Rubber Tips
- Clutch w/Lock Nut (U.S. Patent #7326843)
- Spring Tension Dial
- Hi-Hat Cup (U.S. Patent #7078606)

RH2050

- Drop Clutch (U.S. Patent #7326843)
- Hi-Hat Cup (U.S. Patent #7078606)
- Precision Spring Tension Dial
- PosiLink Twin Cam Drive System with Interchangeable Cams (U.S. Patent #6399866)
- Traction Plate Footboard
- Reversible Spike/Rubber Feet
- PowerShifter
- Drop Clutch Included



H930

- Direct Pull Drive System
- Precision Spring Tension Dial
- Double Braced Tripod w/ Swivel Function
- SureGrip Oversize Rubber Feet
- Demon Style Long Board Footboard

H830

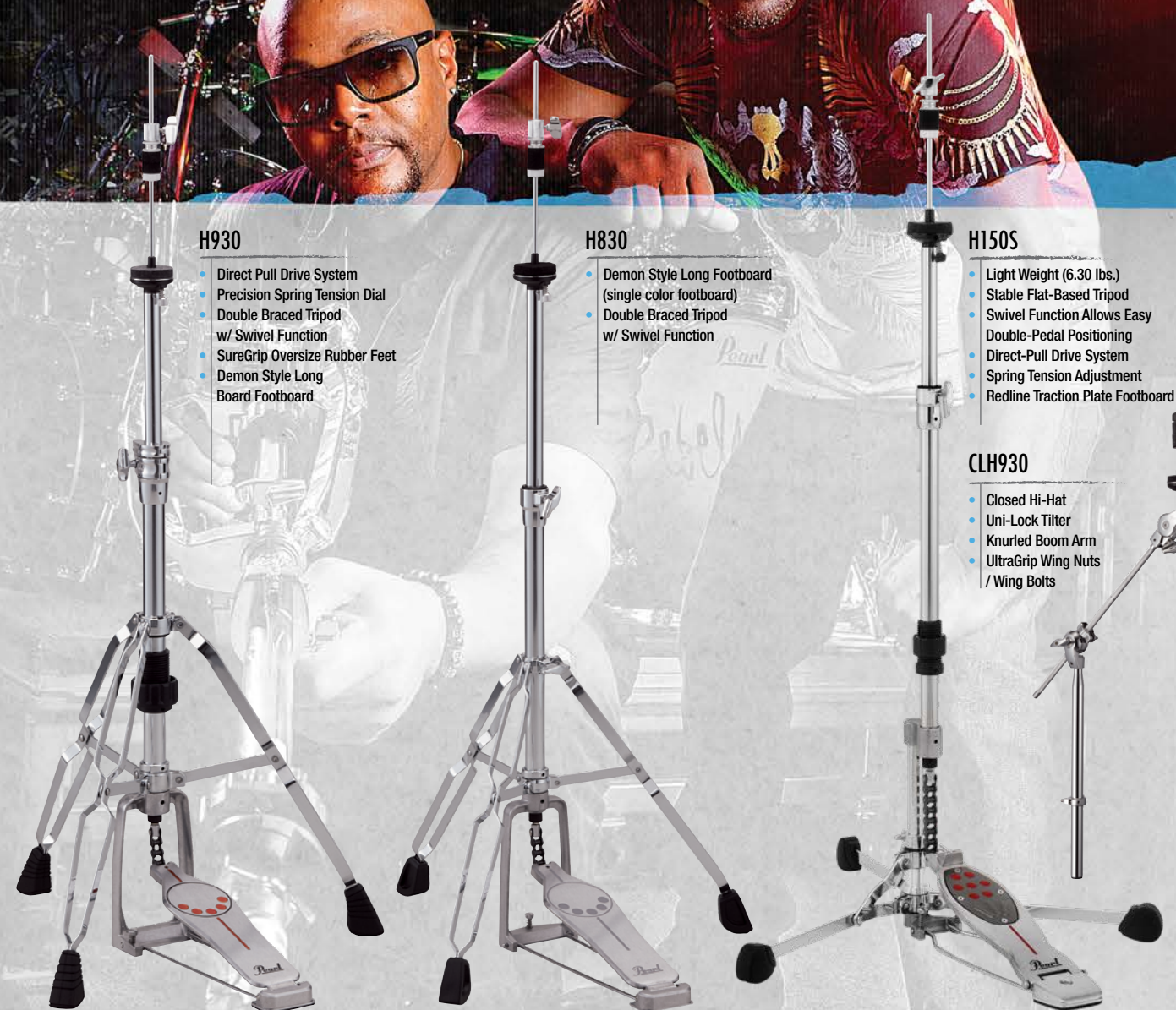
- Demon Style Long Footboard (single color footboard)
- Double Braced Tripod w/ Swivel Function

H150S

- Light Weight (6.30 lbs.)
- Stable Flat-Based Tripod
- Swivel Function Allows Easy Double-Pedal Positioning
- Direct-Pull Drive System
- Spring Tension Adjustment
- Redline Traction Plate Footboard

CLH930

- Closed Hi-Hat
- Uni-Lock Tilter
- Knurled Boom Arm
- UltraGrip Wing Nuts / Wing Bolts



H1050 Pedal Height Adjustment

H1050 Hi-Hat Stand

H930 Hi-Hat Stand

H830 Hi-Hat Stand

H150S* Flat-Based Swiveling Hi-Hat



*Toe Stopper Not Included

INDEPENDENT TRACTION GRIPS

Like all Eliminators, the pedal has removable traction grip inserts that can be adjusted or removed to tailor the amount of grip or slip. The plate is even reversible for more choices.

Sharing many of the key characteristics of new Eliminator Redline bass drum pedals, 2050 Series Hi-Hat Stands deliver unparalleled versatility and customization in hi-hat pedal control. The world's-only hi-hat stand featuring the Interchangeable Cam System, 2050 Series stands' customizable options are designed to eliminate resistance, reduce fatigue, and increase performance.

The RH2050 Remote Hi-Hat's low-friction cable produces smooth, lag-free performance with the lightning-fast action of the PosiLink Twin Cam drive system. Fast, natural-feeling cymbal play is finally accessible virtually anywhere on the kit, or to facilitate multiple hi-hat system setups.

The HA130 positions your hi-hat next to your bass pedal in double bass set-ups for super quick transitions between pedals.



The H2050 Precision Spring Tension Dial allows absolute perfect tension control for the ultimate in fine-tunable response.



HA130

The H2050 and H1050 features our infinitely adjustable footboard angle adjustment. This allows precise height matching when using multiple pedal setups.

H2050 and H1050 Hi-Hat Stand uses beefy 1" tubing and clamshell clamps with built in memory locks for superior rigidity.

H930 Hi-Hat Stand features our Demon style longboard, double braced tripod w/swivel function, and precision tension dial.

H830 Hi-Hat Stand is standard equipment with our Export series and offers a monochromatic Demon Style longboard design and swivel tripod.

The H150S independent tripod is positioned separately from the pedal frame making it the only flat-based hi-hat stand with swiveling legs.

SNARE STANDS

EVERY SNARE SHOULD BE SO LUCKY.

Our premiere S1030 model offers chameleon like diversity for stage or studio. Rock solid footing with a GyroLock tilter that allows pinpoint positioning. The basket arms promote optimal resonance with the Air Suspension cradle.



S1030 SNARE STAND GYROLOCK

Our premier S1030 model features Pearl's 360 degree infinitely adjustable GyroLock tilter for ease-of-use and pinpoint positioning.



S1030 SNARE BASKET

The Pearl S1030 Snare Stand adjusts to fit virtually any size snare from 10" to 16". The Air Suspension rubber tips securely cradle your prized snares while allowing them to fully resonate. U.S. Patent #6710236

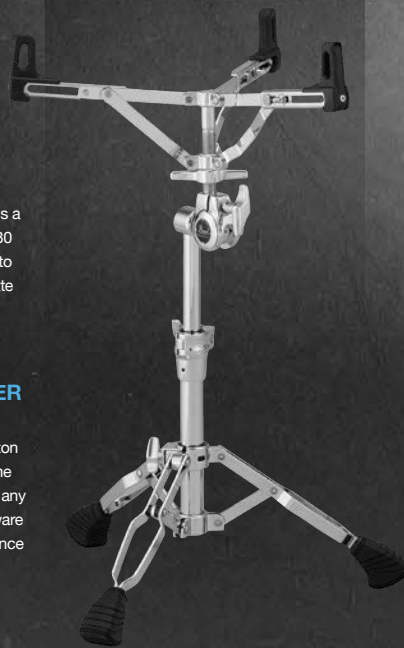


S930D SNARE BASKET

The S930D Snare Stand is a shorter version of the S930 Snare Stand, and is built to comfortably accommodate deeper snare drums.

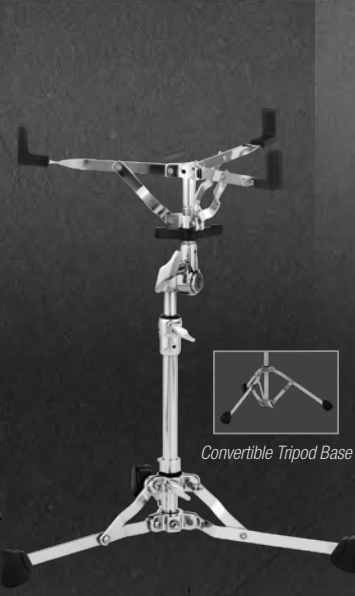
SPIKED / RUBBER FEET

Our CVT300/3 Push Button Spiked/Rubber Feet come in pack of 3 to retrofit on any of our 1030 Series hardware for sure-footed performance on any terrain. U.S. Patent #7371953



The S930 offers similar features but uses our legendary Uni-Lock tilter and is also available as a drop basket version.

Our S830 model is standard equipment with our all new Export line. Lightweight, yet rigidly strong, it's perfect for the local gig and makes load in at the club a breeze.



DRUM THRONES

SOUND ERGONOMICS.



SHAUN FOIST
BREAKING BENJAMIN

NICK THIEME
SHAUN'S TECH

S1030

- GyroLock Tilter
- Air Suspension Rubber Tips (U.S. Patent #6710236)
- Trident Tripod
- Oversize Super Grip Rubber Feet
- Fits Snares 10"-16"
- Height Range of 470-660mm

S930

- Uni-Lock Tilter
- Air Suspension Rubber Tips (U.S. Patent #6710236)
- Double Braced Trident Style Tripod
- Fits Snares 10"-14"
- Height Range of 450-630mm

S930D

- Drop Basket for Deeper Snares
- Uni-Lock Tilter
- Air Suspension Rubber Tips (U.S. Patent #6710236)
- Double Braced Trident Style Tripod
- Fits Snares 10"-14"
- Height Range of 360-540mm

S830

- Uni-Lock Tilter
- Double Braced Tripod
- Fits Snares 13"-14"
- Height Range of 430-620mm

S1505

- Light Weight (5.18 lbs.)
- Stable Flat-Based Tripod
- Gearless Uni-Lock Basket Tilter
- Convertible Tripod or Flat-Based Legs

D1000SN (Not shown)

Same as below but in a "short" version 455-625mm



D2500BR

- Motorcycle-Style Cushion
- Detachable Backrest
- Mounts via Single Knob
- Reversible Stoplock Collar
- Height Range of 495-665mm

D2500

- Motorcycle-Style Cushion
- Accepts Backrest
- Reversible Stoplock Collar
- Height Range of 495-665mm

D1000N

- Round Vinyl Cushion
- Reversible Stoplock
- Height Range of 495-665mm



The D1000SPN Series features a firm vinyl covered cushion and a shock absorbing post for outstanding comfort, along with adjustable spring tension for customizable support.



D2500 and D1000 Series Thrones are equipped with Pearl's exclusive Lock/Spin System. By reversing the StopLock, the cushion can be locked to prevent turning or allowed to spin depending on your preference.



The Height Collar features a hinged Stop Lock and vise-like clamshell design for non-slip security.



D1000SPN

- Round Vinyl Cushion
- Built In Shock Absorber Post with Adjustable Spring Tension
- Reversible Stoplock
- Height Range of 525-630mm

D930

- Round Vinyl Cushion
- Double Braced Legs
- Height Range of 470-660mm

D790

- Round Vinyl Cushion
- Height Range of 450-650mm

D730S

- Round Vinyl Cushion
- Single Braced Tripod
- Height Range of 400-580mm

Next to your drums your throne could be your most important piece of gear. A great throne will prevent fatigue, promote great form and posture to keep you going for those second and third encores night after night. Our thrones offer advanced ergonomic design, sturdy wide footprints for stability and a wide selection of cushion tops to provide your desired level of softness or firmness.

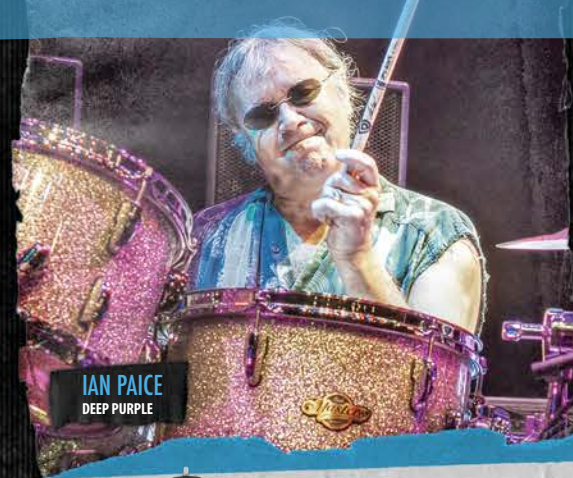
BOOM/STRAIGHT CYMBAL STANDS

WELCOME TO BOOM TOWN.

Pearl's BC2030 features patent pending Nodal Point Markings on the telescopic tubes that allow cymbals to achieve better clarity and sustain when the tubes are positioned at their respective Nodal Points.



Your hardware has to work as hard as you do. Sometimes it's what separates good drummers from the great. Our hardware is road-ready and street-wise. Strong, rigid and durable yet incorporating sophisticated refinements and innovations. Our BC2030 is the most technically advanced boom stand ever devised. It's perfect for the studio musician and offers an unbelievable range of positioning for your prized cymbals.

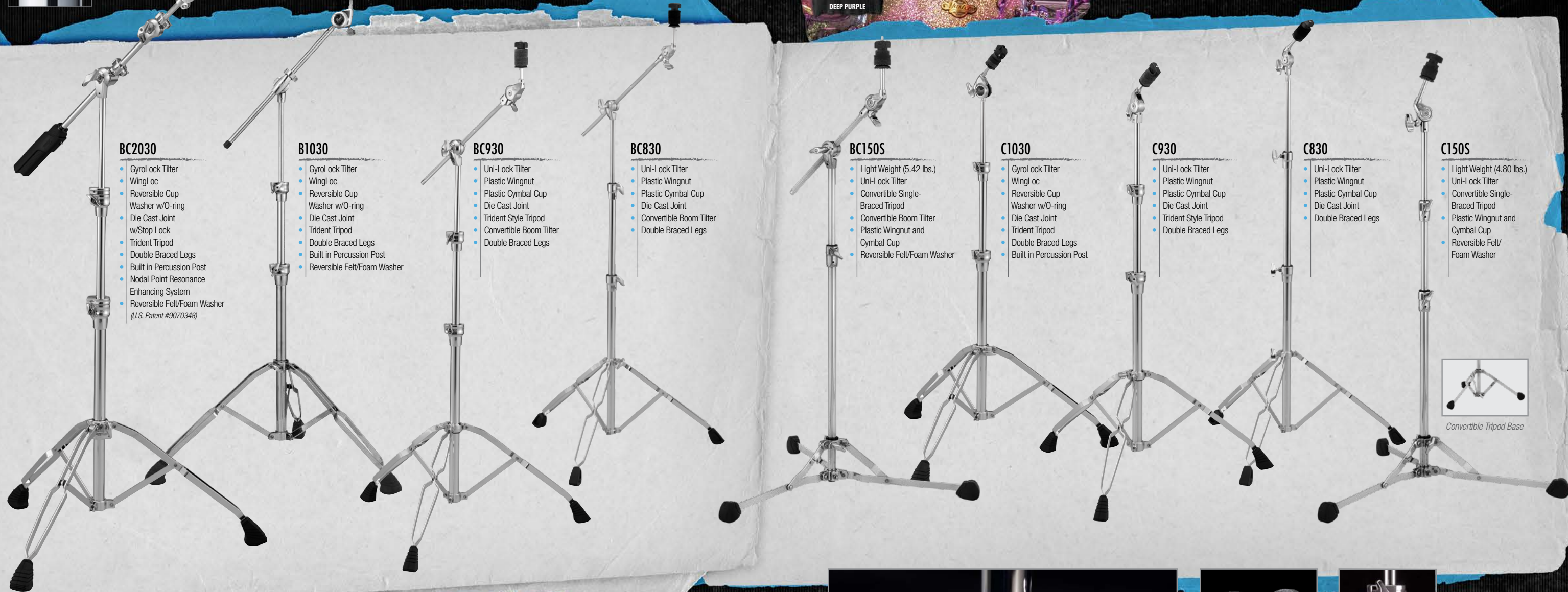


IAN PAICE
DEEP PURPLE

FOR EVERY CYMBAL, THERE IS A PLACE.

Nothing takes more abuse than your cymbal stands.

Constant practice, tear 'em down throw 'em in the back of your ride, load 'em in at the gig. Abuse 'em a couple of hours on stage then start all over again. Those clamps and tilters take a lot of abuse that's why Pearl is the choice of the serious working drummer. We've been advancing drum hardware since 1946 so if you're serious about drumming, get serious about your hardware.



BC2030

- GyroLock Tilter
- WingLoc
- Reversible Cup Washer w/O-ring
- Die Cast Joint w/Stop Lock
- Trident Tripod
- Double Braced Legs
- Built in Percussion Post
- Nodal Point Resonance Enhancing System
- Reversible Felt/Foam Washer (U.S. Patent #9070348)

B1030

- GyroLock Tilter
- WingLoc
- Reversible Cup Washer w/O-ring
- Die Cast Joint
- Trident Tripod
- Double Braced Legs
- Built in Percussion Post
- Reversible Felt/Foam Washer

BC930

- Uni-Lock Tilter
- Plastic Wingnut
- Plastic Cymbal Cup
- Die Cast Joint
- Trident Style Tripod
- Convertible Boom Tilter
- Double Braced Legs

BC830

- Uni-Lock Tilter
- Plastic Wingnut
- Plastic Cymbal Cup
- Die Cast Joint
- Convertible Boom Tilter
- Double Braced Legs

BC150S

- Light Weight (5.42 lbs.)
- Uni-Lock Tilter
- Convertible Single-Braced Tripod
- Convertible Boom Tilter
- Plastic Wingnut and Cymbal Cup
- Reversible Felt/Foam Washer

C1030

- GyroLock Tilter
- WingLoc
- Reversible Cup Washer w/O-ring
- Die Cast Joint
- Trident Tripod
- Double Braced Legs
- Built in Percussion Post

C930

- Uni-Lock Tilter
- Plastic Wingnut
- Plastic Cymbal Cup
- Die Cast Joint
- Trident Style Tripod
- Double Braced Legs

C830

- Uni-Lock Tilter
- Plastic Wingnut
- Plastic Cymbal Cup
- Die Cast Joint
- Double Braced Legs

C150S

- Light Weight (4.80 lbs.)
- Uni-Lock Tilter
- Convertible Single-Braced Tripod
- Plastic Wingnut and Cymbal Cup
- Reversible Felt/Foam Washer



Convertible Tripod Base



GyroLock Tilters are infinitely adjustable and provide 360 degree range of motion for precise positioning with one-step convenience.



The Trident Tripod uses a full 360° of clamping force via the hinged collar. The inner tube rests in a nylon bushing to prevent metal to metal contact. Heavy duty legs feature lateral bracing for superior ultra quiet rigidity.

WingLoc (U.S. Patent # 6884015)

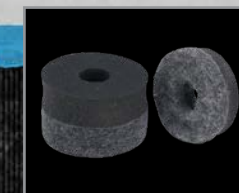
Pearl's WingLoc Quick Release Wing Nut snaps open and snaps closed for super quick removal and attachment.

Reversible Seat Cup (U.S. Patent #6940006)

The seat cup is specially designed to "float" normally or it can be reversed and "locked" to prevent noise during recording.



830 Series stands offer lighter weight while incorporating many of the 1030 series designs. The tripod uses Trident style design with double braced legs. Large easy to use wingnuts and lateral struts for optimal stability.



The Reversible Felt/Foam Cymbal Washers allow four-way control of cymbal "ring" by mixing and matching the "hard" and "soft" surfaces of the washers.



The Clamshell designed Die Cast joint on 2030, 1030, 930 series Boom and Straight cymbal stands, provides superhuman clamping force. Set your position, lock it down and wail away.

RACKS + TOM STANDS / ARMS

AN INDUSTRY ICON - THE PROFESSIONAL'S CHOICE.



DR503
ICON 3-SIDED RACK
w/ PCX100(4), PCL100(2)

DR501
ICON FRONT RACK
w/ PCX100(2), PCL100(2)

DR501C
ICON FRONT RACK
Curved Bar w/ PCX100(2), PCL100(2)



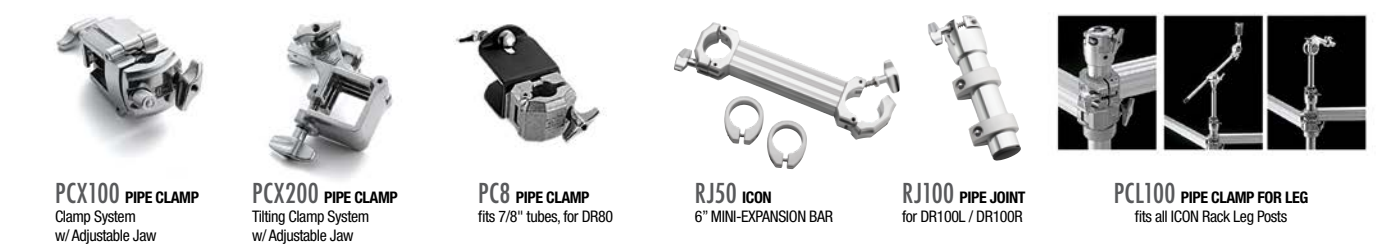
DR503C
ICON CURVED 3-SIDED RACK
w/ PCX100(4), PCL100(2)

DR80
3-SIDED RACK
(*also available DR008 Expansion Bar)

DR501E
ICON EXPANSION BAR

DR501CE
ICON EXPANSION BAR

DR100R
ICON DBL. BASS CONVERSION
LEG for DR503C - Right
DR100L left also available.



PCX100 PIPE CLAMP
Clamp System
w/ Adjustable Jaw

PCX200 PIPE CLAMP
Tilting Clamp System
w/ Adjustable Jaw

PC8 PIPE CLAMP
fits 7/8" tubes, for DR80

RJ50 ICON
6" MINI-EXPANSION BAR

RJ100 PIPE JOINT
for DR100L / DR100R

PCL100 PIPE CLAMP FOR LEG
fits all ICON Rack Leg Posts



ADP20*
2 Clamps
fits 5/8"-1-1/8"

AX25*
2 Revolving Clamps
fits 1/2"-1-1/8"

AX25L*
2 Revolving Clamps
fits 1/2"-1-1/8"

AX28*
In-Line & Revolving Clamps
fits 5/8"-1-1/8" & 1/2"-1-1/8"

ADP30*
fits 3/8"-1-1/4"
3 Adjustable Clamps

*Stands & Tom Arms not included



T1030

T930



TC1030B

TC930



CH1030B

CH930

CH830

CH70

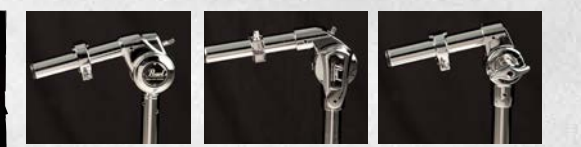
CH830S



PMBDL3/C
CHROME MULTI BASS DRUM LEGS
Multi-Bass Drum Legs allow any bass drum to be played horizontally. Height and tilt adjustable. (Patent Pending)



TH1030 TOM ARMS

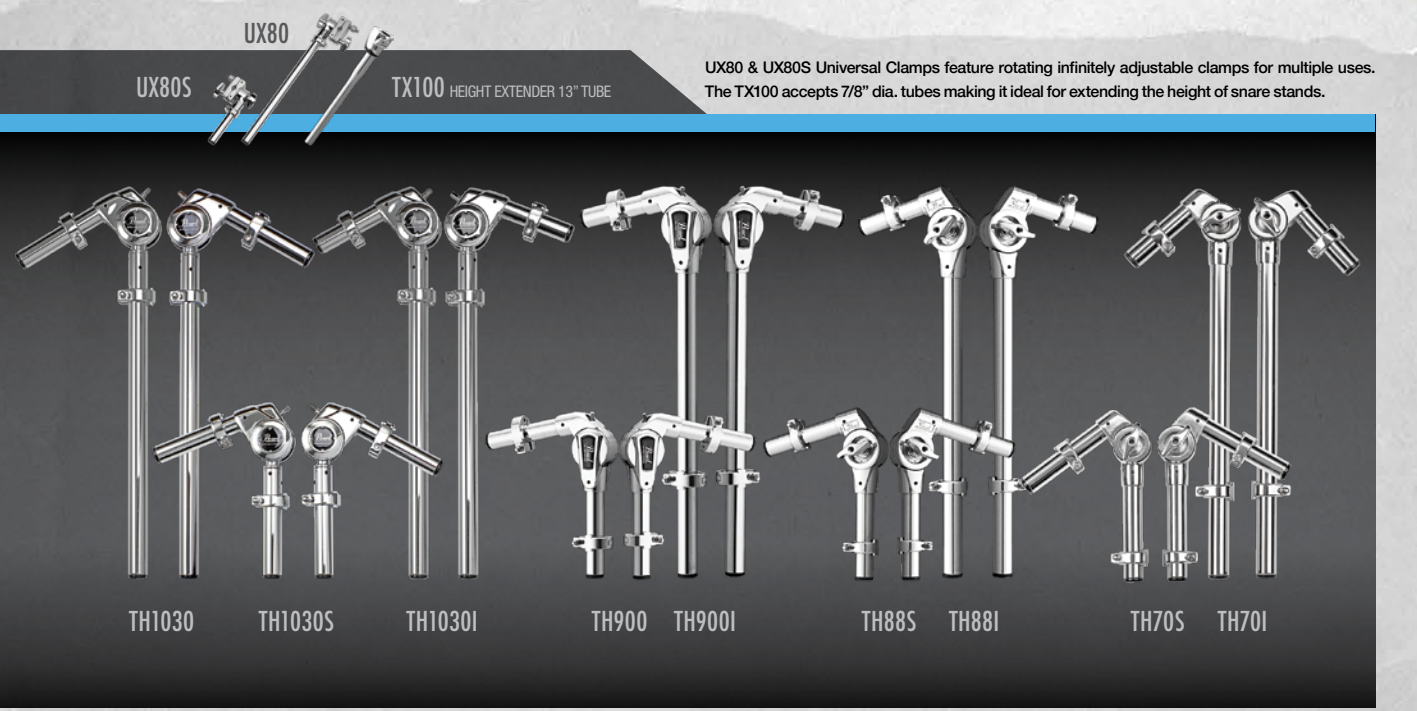


GYROLOCK

UNI-LOCK

GEAR TILTER

Pearl's Tom Arms offer positioning possibilities never before attainable. Our T/TC1030 Series features our GyroLock tilter for an infinite 360 degree range of movement. The T/TC930 Series use our Uni-Lock tilter for 180 degrees of motion. Our TH88 and TH70 Tom Arms Series use our dependable gear tilter.



UX80S

UX80

TX100 HEIGHT EXTENDER 13" TUBE

UX80 & UX80S Universal Clamps feature rotating infinitely adjustable clamps for multiple uses. The TX100 accepts 7/8" dia. tubes making it ideal for extending the height of snare stands.

TH1030

TH1030S

TH1030I

TH900

TH900I

TH88S

TH88I

TH70S

TH70I

SIGNATURE CONGAS + BONGOS

THE PROS PLAY PEARL!

PEARL CONGAS

BOBBY ALLENDE

Bobby Allende Signature Fiberglass Congas and Bongos
#618 Brisa Tropical



CONGAS
PCF110DXBA 11" QUINTO
PCF117DXBA 11.75" CONGA
PCF125DXBA 12.5" TUMBA

BONGOS
PBF300DXBA 7" & 8.5"

RICHIE FLORES

Richie Flores Signature Oak Congas and Bongos
#527 Lunar Eclipse



CONGAS
PCW110DXRF 11" QUINTO
PCW117DXRF 11.75" CONGA
PCW125DXRF 12.5" TUMBA

BONGOS
PBW300DXRF 7" & 9"



ELITE FIBERGLASS CONGAS
PCF110DXA 11" QUINTO
PCF117DXA 11.75" CONGA
PCF125DXA 12.5" TUMBA

ELITE FIBERGLASS BONGOS
PBF300DXA 7" & 9"
#641 Blue Sparkle Burst

Pearl has congas to meet the needs of every player from seasoned professionals to beginners. Our Elite Series offers the highest quality heads with polished Contour Crowns and a choice of shell materials: 100% aged Thai Oak or seamless Fiberglass. Our Primero Pro line features professional-quality construction at an affordable price and a choice of 100% Thai Oak or Fiberglass. The Primero line features outstanding Pearl quality along with the same choice of 100% Thai Oak or Fiberglass. Pearl's Signature Congas feature Contour Crown Rims, polished chrome hardware, and exclusive Self-Aligning Washer System for truly optimal performance. Each series is offered with matching Bongos, and is available in 100% Thai Oak or seamless Fiberglass shells.

ELITE SERIES



ELITE OAK BONGOS
PBW300DX 7" & 9"
#532 Cherry Eucalyptus

ELITE OAK CONGAS
PCW110DX 11" QUINTO
PCW117DX 11.75" CONGA
PCW125DX 12.5" TUMBA
#532 Cherry Eucalyptus

ELITE OAK BONGOS
PBW300DX 7" & 9"
#535 Satin Black w/
Gold Hardware

ELITE OAK CONGAS
PCW110DX 11" QUINTO
PCW117DX 11.75" CONGA
PCW125DX 12.5" TUMBA
#535 Satin Black w/ Gold Hardware

FIELD PERCUSSION SERIES



FIELD PERCUSSION CONGAS
PFC202EDU649 10" & 11" Congas
#649 Textured Black

HAVANA SERIES

The exotic Red Tiger Strip finish is accentuated with gold plated hardware for a look that is as bold as the sound of the Havana Series.

The wide belly shape of these high end, fiberglass drums produce deeper low tones and greater volume. Contour Crown rims and natural skin heads give you clear highs and cutting slaps.



#644
Liquid Gold

The stunning Liquid Gold finish and chrome plated hardware completes a set of drums you can love forever.

HAVANA CONGAS
PCF110HV651 11" Havana Quinto
PCF117HV651 11.75" Havana Conga
PCF125HV651 12.5" Havana Tumba

HAVANA BONGOS
PBF300HV651 7" & 9" Havana Bongos
#644 Liquid Gold
#651 Red Tiger Stripe

TRAVEL CONGAS



Pearl Travel Congas are available in three standard sizes: 11" x 3.5", 11.75" x 3.5" and 12.5" x 3.5". They feature wood shells and stave construction and Remo FiberSkyn 3 synthetic heads. Five precision Allen bolts provide accurate and easy tuning via the included foam-handle wrench. The Travel Conga stand is designed specifically to be rock solid, and lightning fast during set-up and pack-up. The stand comes with a carrying bag that includes a pocket for the optional PPS50TC Bridge that connects two stands together to minimize creeping while performing.

PTC1100 11" TRAVEL CONGA
PTC1175 11.75" TRAVEL CONGA
PTC1250 12.5" TRAVEL CONGA
PSC1175TC Travel Conga Bag

PC1100TC STAND FOR 11" w/ CARRYING BAG
PC1175TC STAND FOR 11.75" w/ CARRYING BAG
PC1250TC STAND FOR 12.5" w/ CARRYING BAG
PPS50TC STAND BRIDGE



TRILOK GURTU INDEPENDENT | FRANK KNUCKLES THE ROOTS | LALO DAVILA MTSU | PAPO PEPIN CONGA LEGEND | ROLANDO MORALES MATOS THE LION KING | ANDY FARAG UMPHREYS MCGEE | DOMINIQUE THOMAS JILL SCOTT | COUNT M'BUTO THE DEREK TRUCKS BAND



ARCHIE PEÑA SHAKIRA | CESAR ESPINOZA ORCHESTRA TOBACO Y RON | VALERIE DEE NARANJO SATURDAY NIGHT LIVE | CARMELO TORRES LOS LONELY BOYS | BRETT BAKER JAY-Z | AARON DRAPER ADELE / EMINEM / RIHANNA

TIMBALES + COWBELLS + FRAME DRUM PERCUSSION

BUILD THE RIGHT RIG FOR THE GIG!



MARC QUIÑONES
GREGG ALLMAN



HORACIO HERNANDEZ
INDEPENDENT

TIMBALES



PT55134
PRIMERO TIMBALES
13" / 14" Steel w/ Tilting Stand
(Stands & Cowbell included)



PTE1415DX
PRIMERO PRO TIMBALES
14" / 15" Steel w/ Tilting Stand
(Sticks included, Cowbell not included.
Not available in Europe)



ETE1415MQ
MARC QUIÑONES SIGNATURE TIMBALES
14" / 15" Steel w/ Tilting Stand and
PBL-30 Clave Block (Cowbell not included)

BANDA SERIES



PBTM1516/C
BANDA TIMBALES
15" / 16" Steel w/ Tilting Stand



PBTB2418/C33
BANDA TAMBORA
24" x 18" Bass w/ Cymbal Mount, Stand & Mallet



JOSE ROSA
MIAMI INDEPENDENT



SAMMY GARCIA
INDEPENDENT



MARCO "ITO" ARGUINZONI
TITO NIEVES



CARLITO SOTO
WILLIE COLON



PTE1336
PRIMERO 13" STEEL TIMBALE
w/ PPS36 Mount



PTE3131
FLAT TIMBALE
w/ I.S.S. (Steel)



PTB3131
FLAT TIMBALE
w/ I.S.S. (Brass)

HORACIO HERNANDEZ SIGNATURE COWBELLS



HH5X MARYBELL
HH4X ISABELL
HH3X CHABELLA
HH2X CLABELL
HH1X BELLA

NEW YORKER BELLS



BCM3NY CHA-CHA (High)
BCM5NY CHA-CHA (Low)
BCM7NY MAMBO
BCM8NYQ MARC QUIÑONES SIG. TIMBALE BELL

BALA BELLS



BCM10 MOUNTED CAMPANA BELL
BCH10 HAND-HELD CAMPANA BELL



Pearl and Grammy Award winning artist Horacio Hernandez have developed the ultimate family of cowbells. These bells feature a quick release system that allows the bell to lift easily off of its mount for hand held playing. 5 unique pitches make this the perfect family.

PRIMERO COWBELLS



PCB10MCR 10" MILLENNIUM CHROME BELL
PCB1030 10" BELL w/ PPS-30
PCB6 6" BELL
PCB4 4" BELL



PTB30 TRI-BELLS
ECB22 HAND-HELD AGOGO
ECB23 MOUNTED AGOGO
PTA30 TRI AGOGO
PDC60 PRO COWBELL BEATER



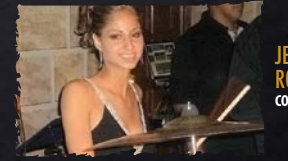
JOSE APONTE
UNT



RAVI JAKHOTIA
RAVI DRUMS



CHRISTIAN PEPIN
INDEPENDENT



JESSICA RODRIGUEZ
COCOMAMA



Pearl HIPKIT 2&4 TO GO

FRAME DRUMS • Pearl Frame Drums are solid wood construction with tuneable coated heads that allow you to create various tones.

RAFA PEREIRA
JANELLE MONAE



PFR14HK*
HIP KIT 14" Frame Drum
w/ Hip Clipz Snare & Strap

The Pearl Hip Kit combines a 14" frame drum and accessory pack that is perfect for drum circles, the stage, studio or as a cocktail kit.



PFR14C
14" FRAME DRUM



PFR0818C
FRAME DRUMS Set of 6
Sizes: 8", 10", 12", 14", 16", 18"

The Hip Clipz accessories can convert any frame drum into the ultimate wearable, go anywhere drum.



PHCSTRP HIP CLIPZ STRAP
PHCSNR HIP CLIPZ SNARE
PHC-PK HIP CLIPZ PACK

HAND PERCUSSION

A WORLD OF HAND PERCUSSION.

NOTE: Items pictured are not to scale



PNG20
NATURAL GOURD GUIRO



PMG20
METAL GUIRO



PFM20
BEADED MARACAS



PFM50
MARACABASA



PGA20
BASKET GANZÁ 9" x 4"



PGA60FP
21" FIELD PERCUSSION SHAKER



PGA32 (Long) PGA30 (Short)
HEX GANZÁS



PGA40
TRIPLE SHAKER



PGA50SF
GROOVE SHAKER



PEC1
EGG CARTON



PTM09BK
9" PRIMERO ROCK TAMBOURINE
W/ MILLENNIUM JINGLES



PTH10B (Brass) PTH10S (Steel)
HEADLESS WOOD TAMBOURINES



PTM10GH
TAMBOURINE W/ BRASS JINGLES



PTM10SH
STEEL JINGLE TAMBOURINE
W/ STAINLESS STEEL JINGLES



PTM50BHR (Brass) PTM50SHR (Steel, not pictured)
ULTRA GRIP VOLUME ADJUSTABLE TAMBOURINE



CBS100
GATLING CABASA



PTG20
TANG-TANG



PAB20 (High) PAB50 (Medium) PAB100 (Low)
ASH TONE BLOCKS



PBL10
CLAVE BLOCK (High)



PBL20
CLAVE BLOCK (Medium)



PBL30
CLAVE BLOCK (Low)



PWR40
SHAKELETS



PSC30
SPIRIT CHIMES W/ HOLDER & Mallet



PWCH3620A
36 ANODIZED ALUMINUM BARS
WITH CASE, HOLDER AND STRIKER



PWCH3220G
32 GOLD ANODIZED ALUMINUM BARS
WITH CASE, HOLDER AND STRIKER

PERCUSSION STANDS, BAGS + HOLDERS

PRO TOOLS FOR EVERY GIG.

PERCUSSION STANDS & BRACKETS

The PC3000TW stand holds full size professional congas as securely as most stands double its weight and mass. The PC300W is scaled down to support our lighter Primero Conga line-up. Both stands set-up in seconds because there are no wingnuts needed to mount your congas. The PC2500 Ultralite Conga stand, is lightweight yet sturdy and stable. Index markings on all adjustable parts make for consistent lightening fast set-ups.

CONGA STANDS

PC3000TW QUICK RELEASE DOUBLE CONGA STAND W/ BAG
PC900 ALL-FIT CONGA STAND
PC200 PRIMERO TWIN CONGA STAND
PC300W QUICK RELEASE DOUBLE CONGA STAND

BONGO STANDS

PB900LW ALL-FIT TILTING BONGO STAND
PB700 LIGHTWEIGHT BONGO STAND
PB700BHS BONGO ATTACHMENT FOR PC-200

DJEMBE STAND

PC800S ALL-FIT DJEMBE STAND

TRAP TABLE & RACK

Our popular PTT1824 Trap Table can be easily converted into a two-level folding rack without drilling or modifications by simply adding the PTR1824 Add-On Rack. The PTR1824 installs in seconds using clamps and folds flush with the table for easy pack-up. A unique clamping system allows the included (4) straight and (4) angled 3/8" knurled posts to clamp anywhere onto horizontal or vertical areas of the rack. Also included is a retractable three-legged stabilizer bar for optimum stability. The easy-to-attach PTR-UNV Universal Trap Table Rack mounts on virtually any trap table and features six 3/8" rods and receptors for various percussion mounting possibilities.

PTRUNV UNIVERSAL TRAP TABLE RACK (Table & stand sold separately from rack)
PTT1824 TRAP TABLE (18" x 24")
PTT1824 + PTR1824 TRAP TABLE RACK
PTR1824RC3 TRAP TABLE SINGLE POST ADAPTER

PERCUSSION CASES

Features include: ergonomic carrying straps, rubber protective bottoms, top-mounted carrying handles, tuning wrench pouches, & heavy duty double zippers.

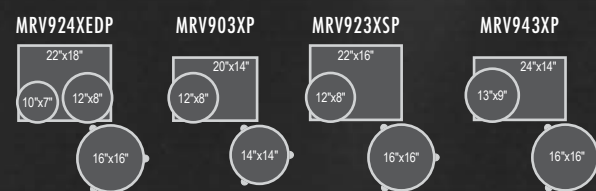
PSCBB BONGO BAG
PSC125CG CONGA BAG 12.5"
PSC117CG CONGA BAG 11.75"
PSC110CG CONGA BAG 10"
PSC140DJ DJEMBE BAG 14"
PSC125DJ DJEMBE BAG 12.5"
PSC1213CJ BOX CAJON CASE
PSC2000 ULTRA LITE CONGA STAND CASE
PSC1175TC TRAVEL CONGA CASE

HOLDER + ACCESSORIES

PTYB1212 PERCUSSION TOY BOX (accessories not included)
PPS37 ANGLED POST ADAPTER
PPS40 LUG MOUNT ACCESSORY HOLDER
PGH20 UNIVERSAL GUIRO HOLDER
PPS20 FOOT PEDAL BRACKET
PCS10 COWBELL STACKER
PPS10 & PPS11 STIX-FREE
CA130
75H
75X
PPS81
PPS82
COWBELL HOLDERS

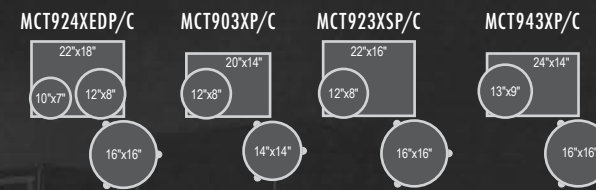
PAGES 20 - 21

MASTERS MAPLE RESERVE A CLASSIC FORMULA FOR SONIC GREATNESS



PAGES 22 - 23

MASTERS MAPLE COMPLETE THE MASTERS SHELL COMES FULL CIRCLE



PAGES 24 - 25

SESSION STUDIO CLASSIC THE ESSENTIAL SOUND OF STUDIO GROOVE



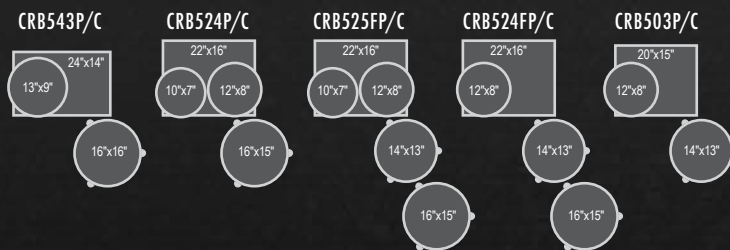
PAGES 26 - 27

WOOD-FIBERGLASS VINTAGE HYBRID, MODERN PERFORMANCE



PAGES 28 - 29

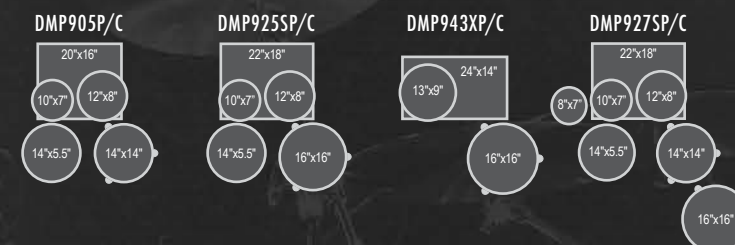
CRYSTAL BEAT THE ORIGINAL SEAMLESS ACRYLIC DRUM SHELL



Individual components also available.
For sizes, visit www.pearldrums.com

PAGES 30 - 31

DECADE MAPLE A DRUM KIT 10 YEARS IN THE MAKING



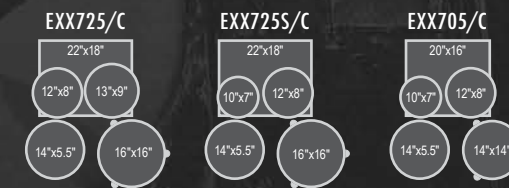
PAGE 32

EXPORT LACQUER THE LEGENDS OF TOMORROW, PLAY EXPORT TODAY



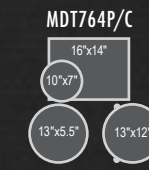
PAGE 33

EXPORT THE BEST SELLING DRUM SET OF ALL TIME



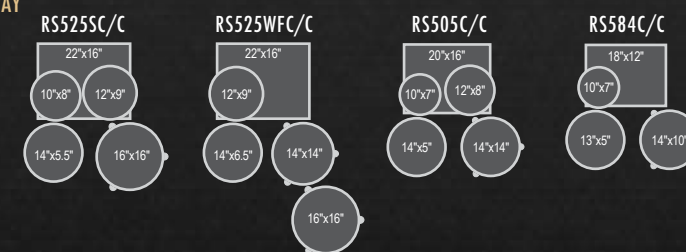
PAGE 34

MIDTOWN BIG GIG, SMALL RIG, HUGE SOUND



PAGE 35

ROADSHOW IT'S YOUR TIME TO PLAY, START THE RIGHT WAY



Pearl CONFIGURATION + COLOR CHART

PAGES 12 - 15

REFERENCE / REFERENCE PURE SONICALLY SELECT DRUM PERFORMANCE / UNRESTRICTED TONAL RESPONSE



#102 NATURAL MAPLE #103 PIANO BLACK #376 ULTRA BLUE FADE

RF

RF924XEDP/C
RFP924XEDP/C

RF924XSP/C
RFP924XSP/C

RF903XP/C
RFP903XP/C

RF923XSP/C
RFP923XSP/C

RF943XP/C
RFP943XP/C



#102 NATURAL MAPLE #103 PIANO BLACK #377 SCARLET SPARKLE BURST

RFP

REFERENCE / REFERENCE PURE SPECIAL ORDER COLORS



#100 WINE RED



#109 ARCTIC WHITE



#111 MATTE NATURAL



#126 EMERALD MIST



#128 VINTAGE SUNBURST



#142 ROOTBEER FADE



#143 TWILIGHT FADE



#148 EMERALD FADE



#151 PLATINUM MIST



#152 ANTIQUE GOLD



#153 SUNRISE FADE



#154 MIDNIGHT FADE



#155 SCARLET FADE



#197 RHYTHM BLUE



#302 INCA GOLD BURST



#329 BURNISHED BRONZE SPARKLE



#330 IVORY PEARL



#331 BLACK PEARL



#332 RED PEARL



#333 PURPLE METALLIC



#334 RED METALLIC



#335 BLACK CHERRY



#345 SATIN AUBURN



#355 ANTIQUE WALNUT



#356 TANGERINE DREAM



#368 BLACK SILVER BURST



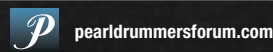
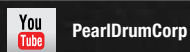
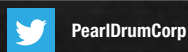
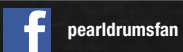
#393 PURPLE CRAZE II



#342 VINTAGE TOBACCO BURST
(Reference Pure Only)



WWW.PEARLDRUM.COM



PGC2016