

CLEANING AND STORING

1. Turn the ON/OFF switch to the OFF position and unplug from the power source.
2. Wait for the steamer to cool completely for at least 30 minutes.
3. Unplug power cord and retract it into the housing.
4. Remove the steamer hose.
5. Remove the water tank from unit, unscrew valve and empty unused contents. Allow to air dry.
6. Remove excess water from the reservoir by unscrewing the plug on the bottom of the steamer and letting the water drain out.
7. Collapse telescopic hanger rod.
8. Replace water tank.
9. Store the unit.



CAUTION: Hose will be hot when in use. Avoid prolonged contact.

OTHER IMPORTANT NOTES

During operation, the steamer hose may gurgle. This is a normal result of condensation collecting inside the hose. Simply lift the handle upward until the hose is extended to its full height. The gurgling will disappear when the excess moisture inside the hose has had a chance to drain back into the base.



DECALCIFICATION

If the appliance begins to produce steam more slowly than usual or stops producing steam and then starts again, you may need to decalcify your steamer. Decalcification refers to removing the calcium deposits that form over time on the metal parts of the steamer. For best performance from the Conair® Ultimate Fabric Steamer, decalcify the unit from time to time. The frequency depends upon the hardness of your tap water and how often you use the steamer.

To decalcify, use a solution of 1/3 white vinegar and 2/3 water in the water tank. Replace the water tank in the unit. Plug the unit into electrical outlet. Turn to the ON position and run until half the amount has steamed (1 liter). Turn the unit to the OFF position, unplug from electrical outlet, and allow to sit for 30 minutes. Remove water tank.

Remove excess water from the reservoir by unscrewing the plug at the bottom of the steamer and holding it over the sink, allowing the water to drain from the internal reservoir.

Repeat the above procedure as many times as necessary until a normal steam rate returns, usually 2–3 times. With each repeated cycle, use a fresh solution of vinegar and water. Run one cycle of fresh, cold water through the unit at the completion of decalcification before using the unit again to steam garments.



HOW TO STEAM

Grasp the handle of the steam nozzle with the steam jets facing away from you. Begin at the bottom of the fabric to allow the steam to rise inside and outside, removing wrinkles. Slowly move the nozzle from the bottom to the top of the fabric. Remove the nozzle from the garment and smooth the fabric with your free hand. Some fabrics are best steamed on the underside of the material. This will allow the fibers of the fabric to relax, eliminating wrinkles.

NOTE: Test fabric for color fastness in an inconspicuous spot. Drape linens, towels, handkerchiefs and napkins over a rod or place on a towel rack.

Heavier fabrics may require repeated steaming. Repeat as necessary.

With practice, you will gain speed and efficiency. You will soon learn which fabrics require multiple steam applications.

Do not directly touch velvet or silk with the steam head.

Always steam with hose in upright position, so any condensation is free to flow back into the steamer.

If you steam in a low position, condensation will collect inside the hose. This will cause gurgling and some water droplets to form near the steam jets on the handle. To avoid this, frequently lift the steam handle upward until the hose is extended to its full height.

TO STEAM DRAPES

Wash and dry drapes as directed, according to fabric type. Rehang drapes and steam when they are in place.

TROUBLESHOOTING THE STEAMER

- PROBLEM - Steamer fails to heat
CAUSE - Steamer not plugged in
SOLUTION - Plug into electrical outlet
- PROBLEM - No steam
CAUSE - Water level is low
SOLUTION - Turn ON/OFF switch off and refill water tank
- PROBLEM - Water drips from nozzle
CAUSE - Condensation in hose
SOLUTION - Hold the hose vertically and allow water to drain back into unit
- PROBLEM - Nozzle gurgles
CAUSE - Condensation in hose
SOLUTION - Hold the hose vertically and allow water to drain back into unit
- PROBLEM - Poor steam performance
CAUSE - Sediment in tank
SOLUTION - Decalcify reservoir and water tank

NOTE: Amounts of chemicals in water will vary in different areas. To ensure continued operation of the steamer, never store without cleaning and removing excess water from the reservoir and water tank.

LIMITED ONE-YEAR WARRANTY

Conair will repair or replace (at our option) your unit free of charge for 12 months from the date of purchase if the appliance is defective in workmanship or materials.

To obtain service under this warranty, return the defective product to the service center listed, together with your purchase receipt and \$3.00 for postage and handling. California residents need only provide proof of purchase and should call 1-800-366-0937 for shipping instructions. In the absence of a purchase receipt, the warranty period shall be 12 months from the date of manufacture.

ANY IMPLIED WARRANTIES, INCLUDING BUT NOT LIMITED TO THE IMPLIED WARRANTY OF MERCHANTABILITY AND FITNESS FOR A PARTICULAR PURPOSE, SHALL BE LIMITED IN DURATION TO THE 12-MONTH DURATION OF THIS WRITTEN, LIMITED WARRANTY. Some states do not allow limitations on how long an implied warranty lasts, so the above limitations may not apply to you.

IN NO EVENT SHALL CONAIR BE LIABLE FOR ANY SPECIAL, INCIDENTAL, OR CONSEQUENTIAL DAMAGES FOR BREACH OF THIS OR ANY OTHER WARRANTY, EXPRESS OR IMPLIED, WHATSOEVER. Some states do not allow the exclusion or limitation of special, incidental, or consequential damages, so the above limitation may not apply to you.

This warranty gives you specific legal rights, and you may also have other rights, which vary from state to state.

Please register this product at:
www.conair.com/registration

Service Center
Conair Corporation
Service Department
7475 N. Glen Harbor Blvd.
Glendale, AZ 85307

For information on any Conair product call:
1-800-3-CONAIR or visit us on the web at
www.conair.com

©2010 Conair Corporation
East Windsor, NJ 08520/Glendale, AZ 85307

10PA115080

IB-10126

FABRIC STEAMER ULTIMATE

**REMOVES
WRINKLES & ODORS
FROM GARMENTS
& KILLS
DUST MITES!**

Instructions for Use

For your safety and continued enjoyment of this product, always read the instruction book carefully before using.



CONAIR®
Model GS28/GS28L

IMPORTANT SAFETY INSTRUCTIONS

When using electrical appliances, especially when children are present, basic safety precautions should always be taken, including the following:

READ ALL INSTRUCTIONS BEFORE USING

DANGER — Any appliance is electrically live even when the switch is off.

To reduce the risk of death by electric shock:

1. **Always unplug appliance immediately after using.**
2. Do not place or store appliance where it can fall or be pulled into a tub or sink.
3. Do not place in, or drop into water or other liquids.
4. If an appliance falls into water, unplug it immediately. **Do not reach into the water.**

WARNING — To reduce the risk of burns, electrocution, fire, or injury to persons:

1. **This appliance should never be left unattended when plugged in.**
2. This appliance should not be used by, on, or near children or individuals with certain disabilities. Unsupervised use could result in fire or personal injury.
3. Use this appliance only for its intended use as described in this manual. Do not use attachments not recommended by the manufacturer.

4. **Never operate this appliance if it has a damaged cord or plug, if it is not working properly, or if it has been dropped or damaged, or dropped into water. Do not attempt to repair the appliance. Incorrect reassembly or repair could cause a risk of fire, electric shock, or injury to persons when the appliance is used. Return the appliance to an authorized service center for examination and repair.**

5. Keep the cord away from heated surfaces. Do not allow cord to contact heated surfaces. Do not pull or twist cord. Let appliance cool completely before putting away.
6. This appliance has a polarized plug (one blade is wider than the other). As a safety feature, this plug will fit in a polarized outlet only one way. If the plug does not fit fully in the outlet, reverse the plug. If it still does not fit, contact a qualified electrician. Do not attempt to defeat this safety feature.
7. Never drop or insert any object into any opening or hose.
8. Do not use outdoors or operate where aerosol (spray) products are being used or where oxygen is being administered.
9. Do not use an extension cord to operate appliance.
10. Surfaces of this appliance may be hot when in use. Do not let heated surfaces touch eyes or skin.
11. Do not place the steam nozzle directly on any surface or on the appliance power cord while it is hot or plugged in. Use the stand provided.
12. Unplug this appliance before filling or emptying. Do not overfill.

13. While emitting steam, this appliance may cause burns if it is used too close to the skin, scalp or eyes, or if it is used incorrectly. To reduce the risk of contact with hot water discharging from steam vents, test appliance before each use by holding it away from body.
14. Do not operate steamer without properly filling the water tank.
15. Always keep the hose and nozzle elevated above the water tank.
16. Never yank cord to disconnect from outlet. Instead, grasp plug and pull to disconnect.
17. Burns could occur from touching hot metal parts, hot water, or steam. Use care when removing water tank or when you turn a steam appliance upside down – there may be hot water in reservoir.
18. To reduce likelihood of circuit overload, do not operate another high-wattage appliance on the same circuit.
19. If an extension cord is absolutely necessary, a 15 ampere rated cord should be used. Cords rated for less amperage may overheat. Care should be taken to arrange the cord so that it cannot be pulled or tripped over.
20. Always remove the water tank from the appliance before filling it with water.
21. When changing attachments, please be sure the unit is off and no steam is being released in order to avoid contact with hot water.
22. Use caution when changing attachments, as they may contain hot water from condensation. Ensure the attachments are dry or cooled off, to avoid contact with hot water.

SAVE THESE INSTRUCTIONS FOR HOUSEHOLD USE ONLY

UNPACKING INSTRUCTIONS

Place the box on a large, sturdy flat surface. Carefully remove the appliance from the packing material. Keep all plastic bags away from children.

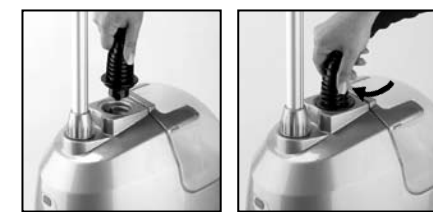
STEAMER ASSEMBLY STEP 1 - Attaching the Telescopic Pole and Rotating Hanger

Insert the bottom of the larger metal telescopic pole into the holder on the unit base and screw the set screw until tight. (Caution: Do not over-tighten.) Then attach pieces as shown in Fig. 1.



STEP 2 - Attaching the Steamer Hose

Be sure the unit is off. Insert angled end of hose into steamer housing and twist clockwise to securely lock hose onto housing. (Be sure both connections at ends of hose are correct before operating appliance.)



Extend the telescopic pole and hang the steam nozzle from the rotating handle. Hose may be stiff upon removal from box. **Hose will relax after initial use. Handle will sit properly on pole support once hose is relaxed. (Fig. 4)**

TURNING THE STEAMER ON

The steamer has three settings:



The pause feature allows you to stop the unit from steaming if you need to step away from the unit for awhile, without actually turning the steamer off.

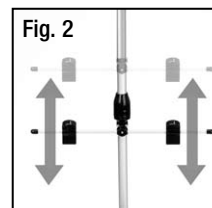
USING ROTATING HANGER

This unit comes with a rotating hanger. To use the hanger, simply place on top of

pole firmly (Fig. 1). It is now in place to rotate 360°. Hang your garment and steam away wrinkles. Turn as you wish.

USING PANT CLIP SYSTEM

This fabric steamer is equipped with a pant clip system for holding pants taut for faster and more effective steaming. The bottom clips can be adjusted by loosening the knob (on the telescopic pole) and moving the pole up and down, depending upon the length of pants (see Fig. 2). Clip pants as shown in Fig. 3 and steam. **Please note some pants may be too long to use the bottom clips. If that is the case, just simply use the top clips and let your pants hang freely.**



OPERATING INSTRUCTIONS BEFORE FILLING THE WATER TANK

Turn the water tank upside down and inspect to make sure the valve and spring assembly are functioning. Place the tank in the reservoir and check that it is seated securely. If the tank has been stored with water inside, it may be necessary to remove the water and clean the tank. Follow the steps for care and cleaning.

FILLING THE WATER TANK (PRIOR TO PLUGGING IN THE APPLIANCE)

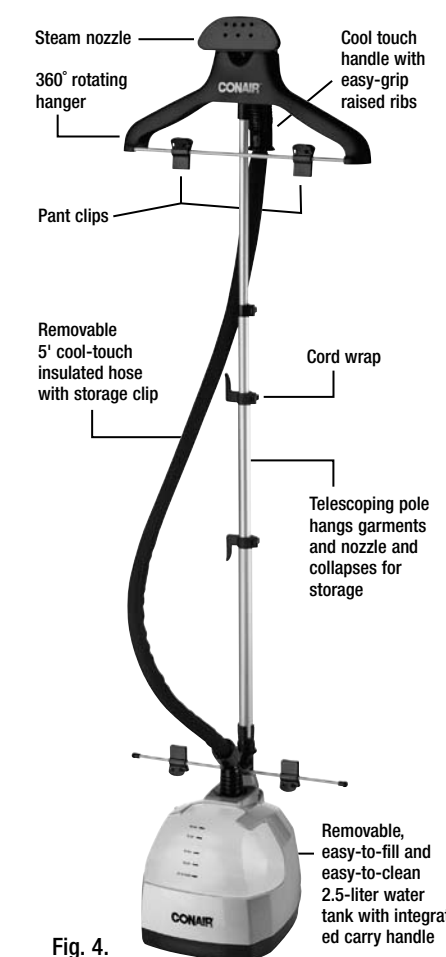
Remove the water tank with the handle and turn upside down. Unscrew the valve in the center of the base. Fill tank by holding it under a source of running cold water until it is filled to the desired level. Do not overfill. Screw the valve cap onto the water tank and return the tank to the upright position. Place the water tank onto the base and make certain it is seated properly in the reservoir.

DO NOT FILL THE TANK WITH HOT WATER.

OPERATING THE STEAMER

1. Make sure the ON/OFF switch is in the OFF position.
2. Make sure all hose connections are secure and tight.
3. Make sure the telescopic pole is fully extended and the hose is not twisted or kinked.
4. Plug the steamer cord into a normal electrical outlet.
5. Turn the ON/OFF switch to the ON position.
6. The switch will light to indicate when power is on.
7. Steam will be produced from the nozzle in about one minute.
8. To turn the steamer off, turn the ON/OFF switch to the OFF position.

GETTING TO KNOW YOUR STEAMER



FAMILIARÍCESE CON SU DESARRUGADOR DE PRENDAS

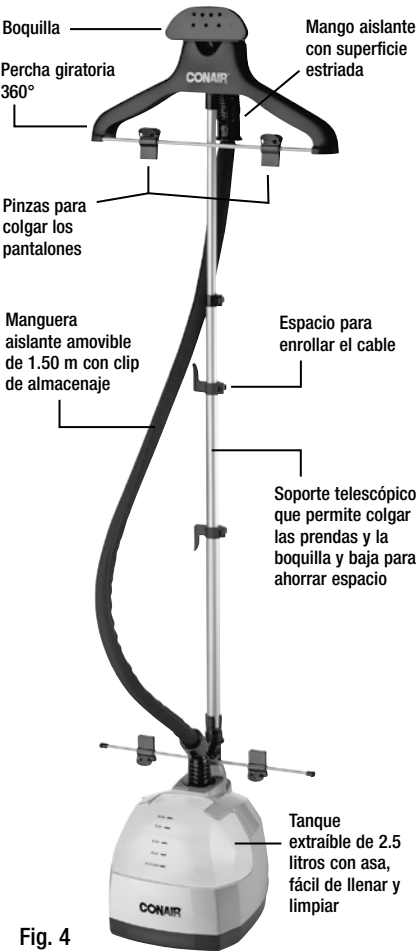


Fig. 4

LIMPIEZA Y ALMACENAJE

Apague (OFF) y desconecte el aparato antes de limpiarlo.

2. Permita que el aparato enfríe durante 30 minutos o más.

3. Desenchufe el cable y guárdelo adentro de la base.

4. Desconecte la manguera.

5. Retire el depósito de agua de la base, desentornille la tapa y tire el agua remanente. Permita que seque al aire libre.

6. Retire la tapa debajo del depósito de agua para vaciar el depósito interno.

7. Repliegue el soporte telescópico.

8. Vuelva a instalar el depósito de agua.

9. Guarde el aparato.



PRECAUCIÓN: La manguera se vuelve muy caliente durante el uso. Evite tocarla.

IMPORTANTE

Puede que la manguera borbote durante el uso. Esto es el resultado normal de la acumulación de condensación adentro de la misma. Si esto ocurriera, simplemente alce la manguera hasta que quede completamente extendida. Esto permitirá que la condensación baje hacia el depósito de agua.



ELIMINACIÓN DEL SARRO

Si nota que el aparato produce menos vapor o funciona de manera intermitente, puede ser necesario eliminar el sarro de su desarrugador de prendas. Depósitos de sarro pueden acumularse en las partes metálicas internas del aparato. Para lograr un desempeño óptimo, deberá eliminarlos regularmente. La frecuencia de la limpieza dependerá de la dureza del agua y de la frecuencia de uso del aparato.

Para eliminar el sarro: Mezcle 1/3 de vinagre blanco con 2/3 de agua y vierta la mezcla en el depósito de agua. Vuelva a colocar el depósito en la base. Encienda el aparato. Deje el aparato encendido hasta que la mitad del líquido (1 litro) se haya evaporado. Después, apague y desconecte el aparato, y déjelo enfriar durante 30 minutos. Vuelva a instalar el depósito de agua.

Vacíe el depósito interno, abriendo la tapa ubicada debajo del depósito de agua y sosteniendo el aparato al revés encima del fregadero.

Repita estos pasos 2 ó 3 veces, usando cada vez una nueva mezcla de agua con vinagre, hasta que el vapor salga normalmente de la boquilla. Antes de volver a usar el aparato para desarrugar prendas, repita estos pasos con un depósito de agua fresca.



CÓMO DESARRUGAR PRENDAS

Sostenga la boquilla con los orificios frente a la prenda. Mueva la boquilla lentamente desde abajo hasta arriba, por dentro y por fuera. Para terminar, aleje la boquilla y alise la tela con la palma de su mano. Algunos tejidos son más fáciles de desarrugar por dentro. Esto relaja las fibras, lo que ayuda a eliminar las arrugas.

NOTA: Haga una prueba en un área discreta de la tela antes de desarrugar la prenda. Se le hará más fácil desarrugar toallas, servilletas y manteles si están colgados en una barra.

Las telas densas pueden necesitar más de una pasada. Repita cuantas veces sea necesario.

Con práctica, desarrugar prendas se volverá más fácil y rápido cada vez y usted aprenderá cual telas necesitan varias pasadas.

No permita que la boquilla haga contacto con seda o terciopelo.

Siempre sostenga la boquilla recta y alta, para que la condensación baje hacia el depósito.

Si la manguera no estuviera recta, condensación podría acumularse adentro de la manguera, haciendo que ésta gorgotee y que agua salga de la boquilla. Si esto ocurriera, simplemente alce la manguera hasta que quede completamente extendida.

CONSEJOS PARA DESARRUGAR CORTINAS

Lave y seque las cortinas según las instrucciones del fabricante. Vuelva a colgar las cortinas antes de desarrugarlas.

GUARDE ESTAS INSTRUCCIONES PARA USO DOMÉSTICO SOLAMENTE

DESEMPACADO

Ponga la caja sobre una superficie espaciosa, llana y segura. Retire el aparato del material de embalaje. Mantenga las bolsas de plástico fuera del alcance de los niños.

ENSAMBLADO

PASO 1 - Ensamblado del soporte telescópico y de la percha giratoria

Inserte la parte inferior del soporte telescópico en la base del aparato y apriete el tornillo de metal para sujetarlo. Precaución: No lo apriete demasiado. Después, ensamble las partes según se indica en la figura 1.



Fig. 1

PASO 2 - Conexión de la manguera

Asegúrese que el aparato esté apagado. Encaje la extremidad de la manguera en la base y gírela en sentido horario para sujetarla. Asegúrese que todas las conexiones estén seguras antes de encender el aparato.



Extienda el soporte telescópico e instale la boquilla sobre el gancho. Puede que la manguera esté rígida al principio. **Después de usarla, se relajará. La boquilla encajará entonces en el soporte. (Fig. 4)**

OPERACIÓN BÁSICA

Su aparato tiene tres ajustes:



La función de pausa le permitirá interrumpir el chorro de vapor temporalmente, sin apagar el aparato.

PERCHA GIRATORIA

La percha giratoria permite colgar las prendas, para desarrugarlas sin esfuerzo. Para instalar la percha, encájela firmemente sobre el soporte telescópico (Fig.1). Para

RESOLUCIÓN DE PROBLEMAS

- PROBLEMA - El aparato no calienta
CAUSA - El aparato no está enchufado
SOLUCIÓN - Enchufe el cordón en un tomacorriente
- PROBLEMA - El aparato no produce vapor
CAUSA - El nivel de agua está bajo
SOLUCIÓN - Apague el aparato y llene el depósito
- PROBLEMA - Gotas de agua salen de la boquilla
CAUSA - Condensación en la manguera
SOLUCIÓN - Alce la manguera para que el agua baje
- PROBLEMA - La boquilla borbota
CAUSA - Condensación en la manguera
SOLUCIÓN - Alce la manguera para que el agua baje
- PROBLEMA - El aparato produce poco vapor
CAUSA - Depósitos de sarro
SOLUCIÓN - Elimine el sarro

NOTA: El agua de la llave puede tener un alto contenido en minerales. Para lograr un desempeño óptimo, vacíe el agua remanente en el depósito de agua y el depósito interno después de cada uso.

GARANTÍA LIMITADA DE UN AÑO

Conair reparará o reemplazará (a su opción) su aparato sin cargo por un periodo de 12 meses a partir de la fecha de compra si presentara defectos de materiales o fabricación.

Para obtener servicio técnico bajo esta garantía, regrese su aparato al Centro de Servicio indicado a continuación, junto con su recibo de compra y un cheque o giro postal de US\$3.00 por gastos de manejo y envío. Los residentes de California sólo necesitan dar una prueba de compra y deben llamar al 1-800-366-0937 para recibir instrucciones de envío. En ausencia del recibo de compra, el periodo de garantía será de 12 meses a partir de la fecha de fabricación.

CUALQUIER GARANTÍA, OBLIGACIÓN O RESPONSABILIDAD IMPLÍCITAS, INCLUYENDO PERO NO LIMITADAS A LA GARANTÍA IMPLÍCITA DE COMERCIABILIDAD Y APTITUD PARA UN PROPÓSITO ESPECÍFICO, ESTARÁN LIMITADAS POR LOS 12 MESES DE LA PRESENTE GARANTÍA ESCRITA. Algunos

Estados no permiten limitaciones sobre la duración de una garantía implícita, de modo que las limitaciones mencionadas pueden no regir para usted.

CONAIR NO SERÁ RESPONSABLE EN NINGÚN CASO POR ALGÚN DAÑO ESPECIAL, INCIDENTAL O CONSECUENTE DEBIDO AL INCUMPLIMIENTO DE ESTA O CUALQUIER OTRA GARANTÍA, EXPRESA O IMPLÍCITA. Algunos Estados no permiten la exclusión o limitación de daños especiales, incidentales o consecuentes, de modo que

las limitaciones mencionadas pueden no regir para usted.

Esta garantía le otorga derechos legales específicos y usted puede tener otros derechos que varían de un Estado a otro.

Para registrar su producto, visítenos en www.conair.com/registration.

Centro de servicio
Conair Corporation
Service Department
7475 N. Glen Harbor Blvd.
Glendale, AZ 85307

Para más información sobre los productos Conair, llame al: 1-800-3-CONAIR o visítenos en www.conair.com

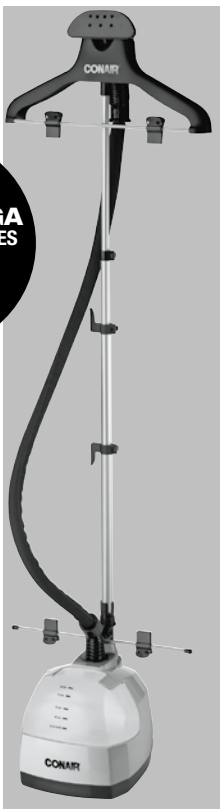
©2010 Conair Corporation
East Windsor, NJ 08520/Glendale, AZ 85307

10PA115080

IB-10126

DESARRUGADOR DE PRENDAS ÚLTIMO

¡DESARRUGA ELIMINA LOS OLORES & MATA LOS ACAROS!



Instrucciones de uso

Para su seguridad y para disfrutar plenamente de este producto, siempre lea las instrucciones cuidadosamente antes de usarlo.

CONAIR

Modelo GS28/GS28L

INSTRUCCIONES DE OPERACIÓN

ANTES DE LLENAR EL DEPÓSITO DE AGUA

Voltee el depósito e inspecciónelo para asegurarse que la válvula y el resorte estén funcionando. Ponga el depósito en el depósito interno y compruebe que está bien fijo. Si el depósito se ha almacenado con agua adentro, puede que sea necesario limpiarlo antes de volver a llenarlo. Véase las instrucciones de limpieza.

LLENADO DEL DEPÓSITO (ANTES DE CONECTAR EL APARATO)

Retire el depósito de agua de la base, cogiéndolo por el asa, y voltéelo. Desentornille la tapa en el centro de la base. Llene el depósito con agua fría, hasta el nivel deseado. No sobrellene el depósito. Vuelva a instalar la tapa sobre el depósito y voltéelo. Coloque el depósito en la base, y compruebe que está bien fijo.

NO LLENE EL DEPÓSITO CON AGUA CALIENTE.

FUNCIONAMIENTO DEL APARATO

1. Asegúrese que el aparato esté apagado (OFF).
2. Asegúrese que la manguera esté debidamente conectada.
3. Asegúrese que el soporte telescópico esté completamente extendido y que la manguera esté recta.
4. Enchufe el cordón en un tomacorriente.
5. Encienda el aparato (ON).
6. El interruptor se alumbrará, lo que indica que el aparato está encendido.
7. El aparato empezará a producir vapor después de aproximadamente un minuto.
8. Para apagar el aparato, ponga el interruptor en la posición "OFF".

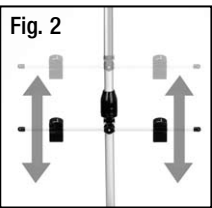


Fig. 3

