



Driven to Deliver.

A forward shift in the way specialty vehicles are built and delivered.

The marketplace is constantly expanding. Our economy is continuing to evolve at a frenzied pace, adding click-and-deliver to an existing brick and mortar landscape.

The Shyft Group embraces this new world and breaks the mold by offering a family of networked brands and products that provide innovative vehicle, upfit, assembly, and distribution solutions to meet changing market demands.

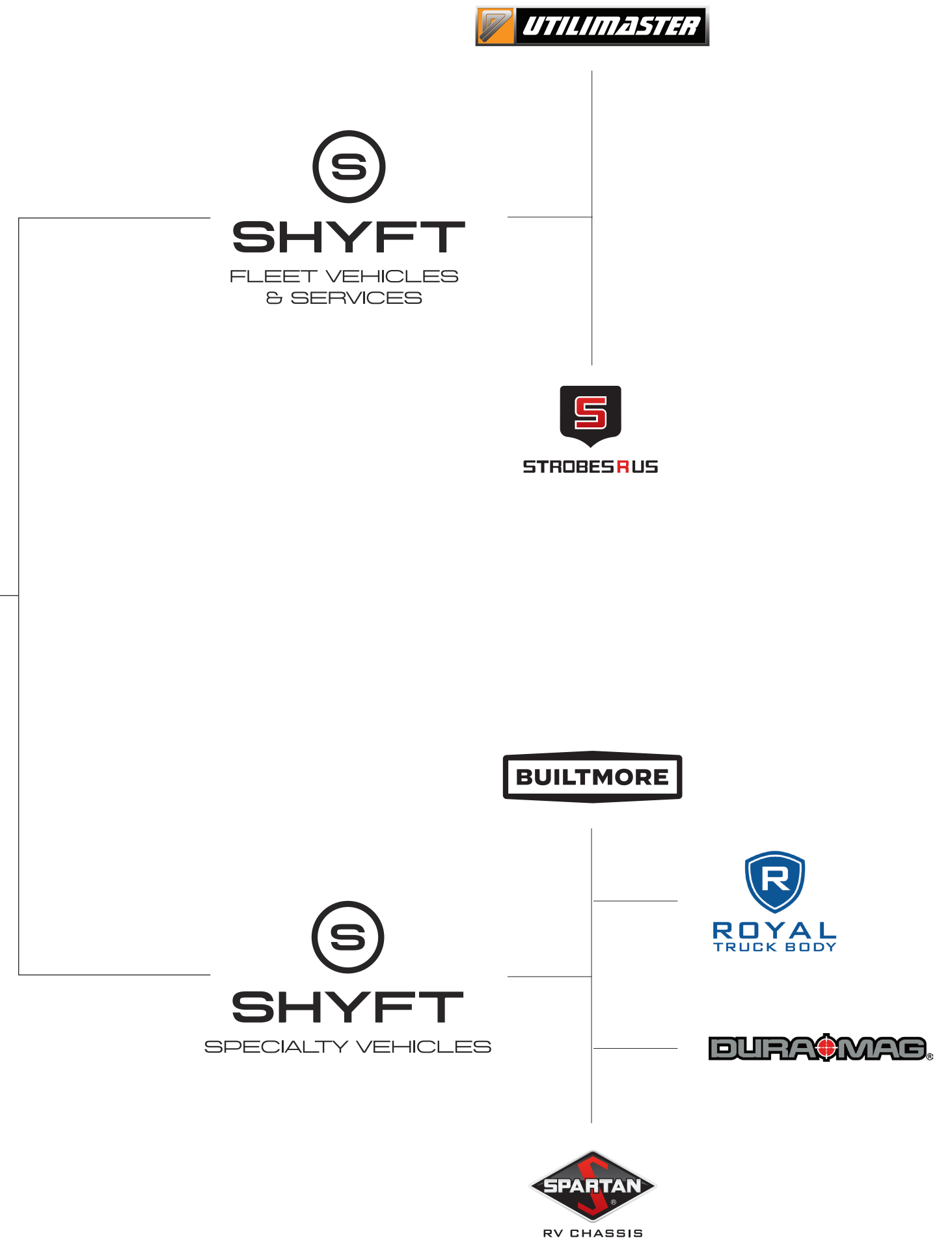
With our strategically located cross-country manufacturing centers, we have the flexibility to produce multiple products from our portfolio in multiple locations. Making true on the promise of coast-to-coast assembly and distribution, we help our partners become formidable national forces.

Providing the tools and technology to efficiently deliver people, packages, and services where they are needed most, The Shyft Group is purpose-built for the road ahead.



Two business units helping to make millions of deliveries a day.

Whether our customers are intent on delivering people, products, or packages to the jobsite, dealership, dock, or the doorstep, The Shyft Group delivers. The Shyft Group engineers, manufactures, assembles, upfits, and services vehicles for two distinct lines of business: Fleet Vehicles & Services and Specialty Vehicles. The brands in each category combine in-depth industry knowledge with unmatched segment expertise. Strategically centered around the customer, our teams use a consultative approach and adaptive production systems to build better vehicles and upfits that exceed customer expectations and keep us far ahead of the competition.



Fleet Vehicles & Services

First in last-mile delivery, The Shyft Group combines in-depth industry knowledge, engineering, manufacturing, assembly, and upfit expertise to deliver responsiveness, safety, and productivity to our customers.

We're committed to making continuous improvements that result in cost-effective builds and corresponding solutions to meet today's demands and tomorrow's opportunities.

Our culture is centered around the unique needs of our fleet customers and we're driven to deliver the most well-designed and reliable fleet vehicles and upfit solutions in the industry. No matter what type of business we're serving, no matter their size.



Utilimaster

Moving ahead of the competition when delivering products and services requires precision, planning, and the perfect vehicle. With our unique Work-Driven Design® process, Utilimaster offers a wide range of custom vehicles and upfits that keep business moving at the speed of demand. That is how world-class brands like UPS, FedEx, the United States Postal Service, DHL, Purolator, Coca-Cola, Starbucks, and Frito-Lay deliver.



Strobes-R-Us

Safety is the driving force at Strobes-R-Us. We distribute and install specialty upfit kits and lighting equipment for local, state, and federal law enforcement, municipalities, construction companies, and utility and telecom providers. If an emergency or service vehicle needs to be seen from a safe distance, Strobes-R-Us is there to light the way.



Specialty Vehicles & Services

Whether it's a hardworking contractor, an adventure-seeking RV owner, or an OEM with production-capacity challenges in need of a manufacturing partner they can trust, The Shyft Group empowers its customers with the tools and technologies they need to stay ahead of the curve and the competition.



Royal Truck Body

We work tirelessly to build work trucks and service bodies for practically every vocation from construction and carpentry to plumbing and service maintenance. Royal Truck Body creates a durable, hardworking toolbox on wheels that helps get the job done. Royal Truck Body delivers the right truck body for our customers right on time.

Our wide range of service, contractor, and van bodies are competitively priced with more standard features than any other brand. For our customers, that means there's no need to order and wait for costly add-ons. We build rugged, reliable, heavy-duty bodies and components that provide extensive work and storage space that's well-organized, strong, and secure, just like the hardworking people that rely on Royal.



RoyalTruckBody.com



DuraMag

Our DuraMag® brand offers building contractors, landscapers, movers, and other service maintenance customers high-strength, all-aluminum commercial truck and van body solutions to help them get their jobs done effectively and efficiently. Perfect for colder climates, DuraMag's range of products meet the needs of customers seeking lighter weight and rust and corrosion resistant truck bodies while providing greater payload capacity and easy access to the gear and equipment required for their given vocation.

While DuraMag truck bodies complement our Royal Truck Body work truck product mix, its Magnum® headache rack line offers consumer and commercial light duty truck owners the premier aftermarket cab protection solution for keeping shifting cargo from damaging the truck's rear cab window.

Together, the DuraMag brand and its Magnum product line provide the durability, reliability, and strength customers with tough jobs not only require, but demand.



DuraMag.com



Spartan RV Chassis

Quality starts from the road up with Spartan RV Chassis. Offering chassis designed and built exclusively for Class A diesel recreational vehicles, we're known and respected for our high-quality durable components, superior ride and handling, and safety innovations. For the enthusiast who wants an easy-to-manuever home on wheels that's designed for control and comfort, no one delivers the adventure of the open road like Spartan RV Chassis.



SpartanRVChassis.com



Builtmore Contract Manufacturing

When customers demand, we're here to supply. We have flexible manufacturing facilities located coast-to-coast which are staffed with highly trained assembly professionals who can help expand production capabilities with precision, speed, and efficiency.

Builtmore is a turnkey solution that meets the ebb and flow of an ever-changing marketplace. Our expertise in heavy to light duty specialty vehicle manufacturing, extensive ship-thru distribution network, and ability to retool our facilities provide our customers more assembly capacity where and when they need it most.

It's no wonder why the likes of GM, Isuzu, BAE Systems, Glaval Bus, and the US Military depend on Builtmore for flexible and efficient contract manufacturing.



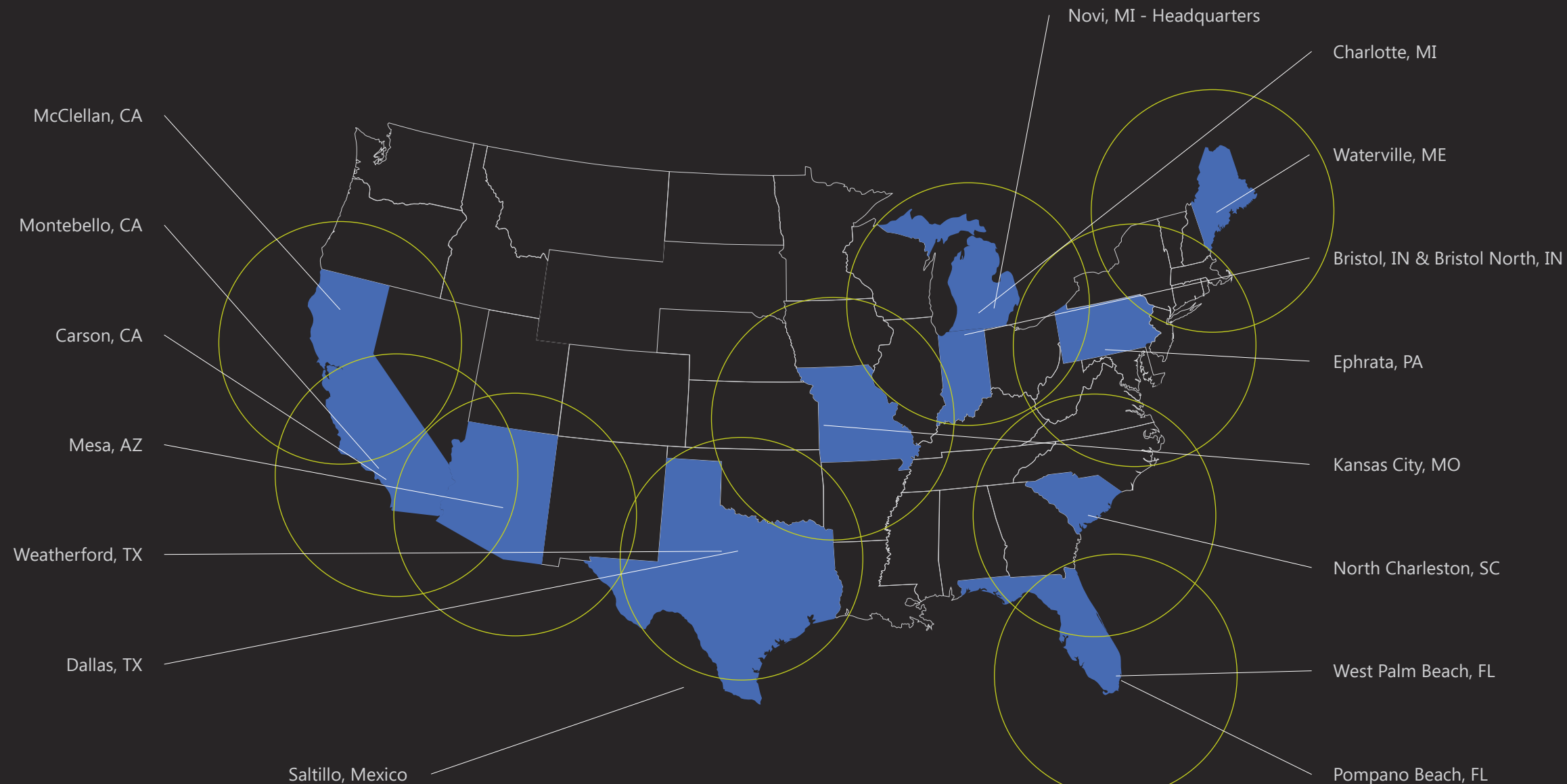
BuiltmoreContractMFG.com

Building opportunities on a proven platform.

The Shyft Group (NASDAQ: SHYF) represents an innovative portfolio of brands focused on helping our customers achieve their business objectives and improve the services they provide their end-users. We accomplish this by engineering, crafting, and delivering purpose-built, highly specialized vehicles and services at a competitive price. This value-added approach inspires customer loyalty, which drives long-term profitable growth for all stakeholders.

SHYF

Strategically placed manufacturing centers



The Shyft Group features manufacturing centers located from the Pacific to the Atlantic—an extensive distribution network capable of reaching over 80% of the nation's population within a 300-mile radius of our facilities. This manufacturing reach offers the flexibility and manufacturing capacity to meet all customer demands with greater manufacturing efficiencies, lower distribution costs, and improved customer service. It also uniquely positions The Shyft Group to quickly and profitably take a regional brand to the national stage.



Always moving forward.

Ever evolving and advancing, The Shyft Group is driven to make an impactful difference in how effectively goods, people, and services are delivered in today's and tomorrow's marketplace. Through our unmatched industry knowledge, engineering expertise, and manufacturing reach, we continue to deliver job-enhancing, efficiency-driving, ever-reliable products and services.

The only way we can meet these high standards is by leveraging the deep talent and expertise of our diverse workforce. As a people-first organization, The Shyft Group has made it a priority to become the employer of choice in the markets of each of its campuses. By providing excellent benefits packages, encouraging employee growth, and promoting from within, The Shyft Group is able to attract and retain a higher caliber of talent—thereby ensuring a higher caliber of output.

Supporting the communities in which we live and work is a top priority of The Shyft Group. Our sustainability and safety initiatives work to keep our employees and neighbors safe as we meet customer demands. Supporting local charities and engaging in community outreach is a direct expression of our corporate values and enriches our corporate culture. Our commitment to improve our living and working environments helps ensure our team members' health, safety, and growth. It's what drives The Shyft Group to be a stronger, more vital part of every community and every marketplace in which it does business.

Together, with our family of dedicated associates and forward-thinking investors, we'll continue to generate innovative and productive vehicles and solutions that transform the effectiveness and efficiency of service and product delivery.

The Shyft Group. Driven to deliver.



SHYFT
GROUP™