

# AC/MC Fittings

## Combination Couplings - Steel Clamps & Bushings

### ACC SERIES COMBINATION COUPLINGS – STEEL

#### Applications:

- ACC combination couplings are used to join EMT conduit to armored cable, metal clad cable or flexible metallic conduit.

#### Features and Benefits:

- Dual gripping saddle design on the coupling safely secures cable or conduit in place and prevents loosening from vibration
- Steel compression ring & nut provide a strong, secure termination point for EMT conduit.
- Tri-head set screw may be installed using a slotted, Phillips or Robertson head screwdriver.
- Steel combination coupling is zinc electroplated for corrosion resistance.

#### Certifications and Compliances:

- UL Listed
- cUL Listed

#### Materials and Finishes:

- Body: Steel – Zinc electroplated
- Saddle: Steel – Zinc electroplated
- Screw: Steel – Zinc electroplated

#### Compression Coupling:

AC/MC, FMC to EMT



Cat. #	Trade Size	Cable Opening		Unit Qty.
		Max.	Min.	
ACC38	3/8"	0.660	0.400	25
ACC50	1/2"	0.920	0.520	10
ACC75	3/4"	1.100	0.680	10

#### Set-Screw Coupling:



Cat. #	Trade Size	Unit Qty.	Wt. Lbs. Per 100
ACCSS38*	3/8"	25	9
ACCSS50	1/2"	10	12
ACCSS75	3/4"	10	14

\*not UL Listed

### CLAMPS "SNAP-ON" – STEEL

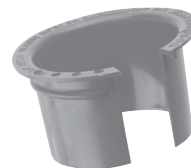
#### Light Gauge



Cat. #	Conduit Sizes Rigid	Size of Strap Inside	Unit Qty.	Wt. Lbs. Per 100
566	1/4"	.540	500	2
567BX	3/8"	.675	100	14

CP

### ANTI-SHORT BUSHINGS



Cat. #	FMC Trade Size	Armored Cable Size	Unit Qty.
ASB 0	5/16"	14 - 2, 14 - 3, 12 - 2	100
ASB 1	3/8"	14 - 4, 12 - 3, 6 - 1, 4 - 1	100
ASB 2	7/16"	12 - 4, 10 - 2, 10 - 3, 2 - 1	50
ASB 3	1/2"	10 - 4, 8 - 2, 8 - 3, 1 - 1	50
ASB 4	3/4"	8 - 4, 6 - 4, 6 - 3, 6 - 2, 4 - 3, 4 - 2	50
ASB 5	1"	3 - 1, 2 - 1, 2 - 1 / 0, 1 - 300 MCM, 1 - 350 MCM, 1 - 400 MCM, 1 - 450 MCM, 1 - 500 MCM	25
ASB 6	1 1/4"	4 - 1, 4 - 1 / 0, 4 - 2 / 0, 3 - 1 / 0, 3 - 2 / 0, 3 - 3 / 0, 2 - 2 / 0, 2 - 3 / 0, 2 - 4 / 0, 1 - 600 MCM, 1 - 650 MCM, 1 - 700 MCM, 1 - 750 MCM, 1 - 800 MCM, 1 - 900 MCM	10
ASB 7	1 1/2"	4 - 3 / 0, 4 - 4 / 0, 3 - 4 / 0, 3 - 250 MCM, 3 - 300 MCM, 2 - 250 MCM, 2 - 300 MCM, 2 - 350 MCM, 1 - 1000 MCM	10
ASB 8	2" to 2 1/2"	4 - 250 MCM, 4 - 300 MCM, 4 - 350 MCM, 4 - 400 MCM, 4 - 450 MCM, 4 - 500 MCM, 3 - 350 MCM, 3 - 400 MCM, 3 - 450 MCM, 3 - 500 MCM, 2 - 400 MCM, 2 - 450 MCM, 2 - 500 MCM	10

Bushings are packed in clear poly bags.  
Anti-short bushings have a temperature rating of 90°C