

2 bedrooms, 1 bath 725 Sq Ft

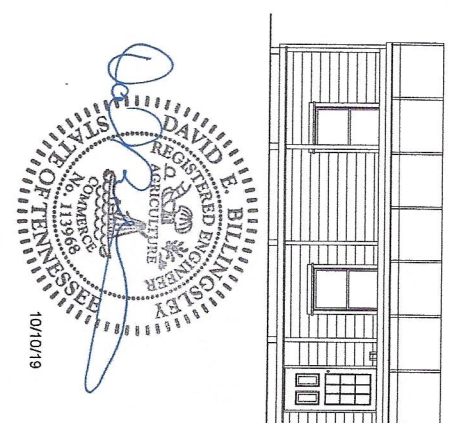
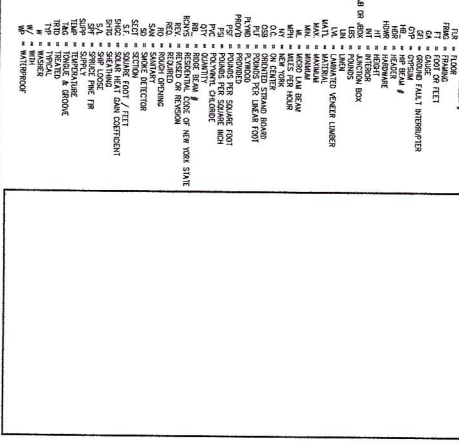
Project Name & Address:

HTS-PIONEER (LOT MODEL) 50'  
1051 NOLAN ROAD, CUMBERLAND FURNACE, TN 37051 (DICKSON COUNTY)

TYPICAL ABBREVIATIONS

- AC - AIR CONDITIONING
- AD - ABOVE GRADE
- AG - ABOVE GROUND
- AL - ABOVE LEVEL
- AS - ABOVE SLAB
- AT - ABOVE TOP
- BE - BELOW GRADE
- BL - BELOW LEVEL
- BS - BELOW SLAB
- BT - BELOW TOP
- CA - CEMENT
- CB - CONCRETE BLOCK
- CC - CONCRETE CURB
- CD - CONCRETE DECK
- CE - CONCRETE EDGE
- CF - CONCRETE FINISH
- CG - CONCRETE GRAB BAR
- CH - CONCRETE HANGING
- CI - CONCRETE INSULATION
- CL - CONCRETE LIFT
- CM - CONCRETE MASONRY
- CP - CONCRETE PAVING
- CS - CONCRETE SILL
- CT - CONCRETE TIE
- CU - CONCRETE UNDERLAYMENT
- CV - CONCRETE VENEER
- DA - DRAINAGE
- DB - DRAINAGE BENCH
- DC - DRAINAGE CURB
- DE - DRAINAGE EDGE
- DF - DRAINAGE FINISH
- DG - DRAINAGE GRAB BAR
- DI - DRAINAGE INSULATION
- DL - DRAINAGE LIFT
- DM - DRAINAGE MASONRY
- DN - DRAINAGE NOTCH
- DO - DRAINAGE OPENING
- DP - DRAINAGE PAVING
- DS - DRAINAGE SILL
- DT - DRAINAGE TIE
- DU - DRAINAGE UNDERLAYMENT
- DV - DRAINAGE VENEER
- EA - EXTERIOR ANCHOR
- EB - EXTERIOR BENCH
- EC - EXTERIOR CURB
- ED - EXTERIOR EDGE
- EF - EXTERIOR FINISH
- EG - EXTERIOR GRAB BAR
- EH - EXTERIOR HANGING
- EI - EXTERIOR INSULATION
- EL - EXTERIOR LIFT
- EM - EXTERIOR MASONRY
- EN - EXTERIOR NOTCH
- EO - EXTERIOR OPENING
- EP - EXTERIOR PAVING
- ES - EXTERIOR SILL
- ET - EXTERIOR TIE
- EU - EXTERIOR UNDERLAYMENT
- EV - EXTERIOR VENEER
- FA - FLOOR ANCHOR
- FB - FLOOR BENCH
- FC - FLOOR CURB
- FD - FLOOR EDGE
- FE - FLOOR FINISH
- FG - FLOOR GRAB BAR
- FH - FLOOR HANGING
- FI - FLOOR INSULATION
- FL - FLOOR LIFT
- FM - FLOOR MASONRY
- FN - FLOOR NOTCH
- FO - FLOOR OPENING
- FP - FLOOR PAVING
- FS - FLOOR SILL
- FT - FLOOR TIE
- FU - FLOOR UNDERLAYMENT
- FV - FLOOR VENEER
- GA - GROUND ANCHOR
- GB - GROUND BENCH
- GC - GROUND CURB
- GD - GROUND EDGE
- GE - GROUND FINISH
- GG - GROUND GRAB BAR
- GH - GROUND HANGING
- GI - GROUND INSULATION
- GL - GROUND LIFT
- GM - GROUND MASONRY
- GN - GROUND NOTCH
- GO - GROUND OPENING
- GP - GROUND PAVING
- GS - GROUND SILL
- GT - GROUND TIE
- GU - GROUND UNDERLAYMENT
- GV - GROUND VENEER
- HA - HANGING ANCHOR
- HB - HANGING BENCH
- HC - HANGING CURB
- HD - HANGING EDGE
- HE - HANGING FINISH
- HG - HANGING GRAB BAR
- HH - HANGING HANGING
- HI - HANGING INSULATION
- HL - HANGING LIFT
- HM - HANGING MASONRY
- HN - HANGING NOTCH
- HO - HANGING OPENING
- HP - HANGING PAVING
- HS - HANGING SILL
- HT - HANGING TIE
- HU - HANGING UNDERLAYMENT
- HV - HANGING VENEER
- IA - INTERIOR ANCHOR
- IB - INTERIOR BENCH
- IC - INTERIOR CURB
- ID - INTERIOR EDGE
- IE - INTERIOR FINISH
- IG - INTERIOR GRAB BAR
- IH - INTERIOR HANGING
- II - INTERIOR INSULATION
- IL - INTERIOR LIFT
- IM - INTERIOR MASONRY
- IN - INTERIOR NOTCH
- IO - INTERIOR OPENING
- IP - INTERIOR PAVING
- IS - INTERIOR SILL
- IT - INTERIOR TIE
- IU - INTERIOR UNDERLAYMENT
- IV - INTERIOR VENEER
- JA - JOIST ANCHOR
- JB - JOIST BENCH
- JC - JOIST CURB
- JD - JOIST EDGE
- JE - JOIST FINISH
- JG - JOIST GRAB BAR
- JH - JOIST HANGING
- JI - JOIST INSULATION
- JL - JOIST LIFT
- JM - JOIST MASONRY
- JN - JOIST NOTCH
- JO - JOIST OPENING
- JP - JOIST PAVING
- JS - JOIST SILL
- JT - JOIST TIE
- JU - JOIST UNDERLAYMENT
- JV - JOIST VENEER
- KA - KITCHEN ANCHOR
- KB - KITCHEN BENCH
- KC - KITCHEN CURB
- KD - KITCHEN EDGE
- KE - KITCHEN FINISH
- KG - KITCHEN GRAB BAR
- KH - KITCHEN HANGING
- KI - KITCHEN INSULATION
- KL - KITCHEN LIFT
- KM - KITCHEN MASONRY
- KN - KITCHEN NOTCH
- KO - KITCHEN OPENING
- KP - KITCHEN PAVING
- KS - KITCHEN SILL
- KT - KITCHEN TIE
- KU - KITCHEN UNDERLAYMENT
- KV - KITCHEN VENEER
- LA - LANDING ANCHOR
- LB - LANDING BENCH
- LC - LANDING CURB
- LD - LANDING EDGE
- LE - LANDING FINISH
- LG - LANDING GRAB BAR
- LH - LANDING HANGING
- LI - LANDING INSULATION
- LL - LANDING LIFT
- LM - LANDING MASONRY
- LN - LANDING NOTCH
- LO - LANDING OPENING
- LP - LANDING PAVING
- LS - LANDING SILL
- LT - LANDING TIE
- LU - LANDING UNDERLAYMENT
- LV - LANDING VENEER
- MA - MASONRY ANCHOR
- MB - MASONRY BENCH
- MC - MASONRY CURB
- MD - MASONRY EDGE
- ME - MASONRY FINISH
- MG - MASONRY GRAB BAR
- MH - MASONRY HANGING
- MI - MASONRY INSULATION
- ML - MASONRY LIFT
- MM - MASONRY MASONRY
- MN - MASONRY NOTCH
- MO - MASONRY OPENING
- MP - MASONRY PAVING
- MS - MASONRY SILL
- MT - MASONRY TIE
- MU - MASONRY UNDERLAYMENT
- MV - MASONRY VENEER
- NA - NAIL ANCHOR
- NB - NAIL BENCH
- NC - NAIL CURB
- ND - NAIL EDGE
- NE - NAIL FINISH
- NG - NAIL GRAB BAR
- NH - NAIL HANGING
- NI - NAIL INSULATION
- NL - NAIL LIFT
- NM - NAIL MASONRY
- NN - NAIL NOTCH
- NO - NAIL OPENING
- NP - NAIL PAVING
- NS - NAIL SILL
- NT - NAIL TIE
- NU - NAIL UNDERLAYMENT
- NV - NAIL VENEER
- OA - OVERHEAD ANCHOR
- OB - OVERHEAD BENCH
- OC - OVERHEAD CURB
- OD - OVERHEAD EDGE
- OE - OVERHEAD FINISH
- OG - OVERHEAD GRAB BAR
- OH - OVERHEAD HANGING
- OI - OVERHEAD INSULATION
- OL - OVERHEAD LIFT
- OM - OVERHEAD MASONRY
- ON - OVERHEAD NOTCH
- OO - OVERHEAD OPENING
- OP - OVERHEAD PAVING
- OS - OVERHEAD SILL
- OT - OVERHEAD TIE
- OU - OVERHEAD UNDERLAYMENT
- OV - OVERHEAD VENEER
- PA - PAVEMENT ANCHOR
- PB - PAVEMENT BENCH
- PC - PAVEMENT CURB
- PD - PAVEMENT EDGE
- PE - PAVEMENT FINISH
- PG - PAVEMENT GRAB BAR
- PH - PAVEMENT HANGING
- PI - PAVEMENT INSULATION
- PL - PAVEMENT LIFT
- PM - PAVEMENT MASONRY
- PN - PAVEMENT NOTCH
- PO - PAVEMENT OPENING
- PP - PAVEMENT PAVING
- PS - PAVEMENT SILL
- PT - PAVEMENT TIE
- PU - PAVEMENT UNDERLAYMENT
- PV - PAVEMENT VENEER
- RA - RAMP ANCHOR
- RB - RAMP BENCH
- RC - RAMP CURB
- RD - RAMP EDGE
- RE - RAMP FINISH
- RG - RAMP GRAB BAR
- RH - RAMP HANGING
- RI - RAMP INSULATION
- RL - RAMP LIFT
- RM - RAMP MASONRY
- RN - RAMP NOTCH
- RO - RAMP OPENING
- RP - RAMP PAVING
- RS - RAMP SILL
- RT - RAMP TIE
- RU - RAMP UNDERLAYMENT
- RV - RAMP VENEER
- SA - SILL ANCHOR
- SB - SILL BENCH
- SC - SILL CURB
- SD - SILL EDGE
- SE - SILL FINISH
- SG - SILL GRAB BAR
- SH - SILL HANGING
- SI - SILL INSULATION
- SL - SILL LIFT
- SM - SILL MASONRY
- SN - SILL NOTCH
- SO - SILL OPENING
- SP - SILL PAVING
- SS - SILL SILL
- ST - SILL TIE
- SU - SILL UNDERLAYMENT
- SV - SILL VENEER
- TA - TIE ANCHOR
- TB - TIE BENCH
- TC - TIE CURB
- TD - TIE EDGE
- TE - TIE FINISH
- TG - TIE GRAB BAR
- TH - TIE HANGING
- TI - TIE INSULATION
- TL - TIE LIFT
- TM - TIE MASONRY
- TN - TIE NOTCH
- TO - TIE OPENING
- TP - TIE PAVING
- TS - TIE SILL
- TT - TIE TIE
- TU - TIE UNDERLAYMENT
- TV - TIE VENEER
- UA - UNDERLAYMENT ANCHOR
- UB - UNDERLAYMENT BENCH
- UC - UNDERLAYMENT CURB
- UD - UNDERLAYMENT EDGE
- UE - UNDERLAYMENT FINISH
- UG - UNDERLAYMENT GRAB BAR
- UH - UNDERLAYMENT HANGING
- UI - UNDERLAYMENT INSULATION
- UL - UNDERLAYMENT LIFT
- UM - UNDERLAYMENT MASONRY
- UN - UNDERLAYMENT NOTCH
- UO - UNDERLAYMENT OPENING
- UP - UNDERLAYMENT PAVING
- US - UNDERLAYMENT SILL
- UT - UNDERLAYMENT TIE
- UU - UNDERLAYMENT UNDERLAYMENT
- UV - UNDERLAYMENT VENEER
- VA - VENEER ANCHOR
- VB - VENEER BENCH
- VC - VENEER CURB
- VD - VENEER EDGE
- VE - VENEER FINISH
- VG - VENEER GRAB BAR
- VH - VENEER HANGING
- VI - VENEER INSULATION
- VL - VENEER LIFT
- VM - VENEER MASONRY
- VN - VENEER NOTCH
- VO - VENEER OPENING
- VP - VENEER PAVING
- VS - VENEER SILL
- VT - VENEER TIE
- VU - VENEER UNDERLAYMENT
- VV - VENEER VENEER

ATTENTION LOCAL INSPECTIONS DEPARTMENT  
THE FOLLOWING ITEMS HAVE NOT BEEN COMPLETED BY THE CONTRACTOR AND MUST BE COMPLETED AT LOCAL LEVEL.  
1. EXTERIOR LIGHTS  
2. PLUMBING CONNECTIONS UNDER THE FLOOR  
3. CONNECTIONS FROM MECHANICAL TO FOUNDATION  
4. COMPLETION OF THE ENERGY CERTIFICATE (SEE ATTACHED ENERGY CODE CALCULATIONS FOR MORE INFORMATION)  
5. FOUNDATION DESIGN AND CONSTRUCTION  
6. ELECTRICAL DESIGN AND CONSTRUCTION  
7. FLOOR INSULATION INSTALLED ON-SITE



S/N: PCM12652050092019CCB

GENERAL NOTES

- BUILDING IS DESIGNED PER PROVIDED STRUKAS SHOWN IN CLASSIFICATION SECTION ABOVE. ALL ZONING REQUIREMENTS, PER ANY APPLICABLE, PER STRUKAS REQUIRED ARE THE RESPONSIBILITY OF THE CONTRACTOR.
- SEE PROVISIONAL SYSTEMS.
- SHOWER ALARMS AS PER STATE CODES.
- FLOOR FINISH IS LESS THAN OR EQUAL TO 200.

DISCLAIMER: These drawings have been prepared and reviewed in accordance with all applicable codes. This drawing set is not intended to be all inclusive, nor does this set detail every code required for compliance with all applicable codes under the supervision of the local authority having jurisdiction whether detailed in this set or not. Hilltop Structures, LLC, its employees and officials assume no liability for errors and omissions from this set of drawings as may be permitted by law.

**PRF CORPORATION**  
Approval Limited to Factory Built Portion Only  
Tennessee  
Staff Plan Reviewer  
10/16/19

STATE SEAL:

INSULATION VALUES	ROOF TO EXTERIOR	EXTERIOR WALLS TO EXTERIOR	FLOOR	CLIMATE ZONE	TOTAL Btu HEAT LOSS
	R-19 + 1" SH	R-13	R-30 (ON SITE BY OTHERS)	4	1482

SEE ATTACHED RES-CHEK FOR ENERGY CODE COMPLIANCE

CLASSIFICATION		DRAWING INDEX	
FOUNDATION:	ASISTANT	SHEET:	DESCRIPTION
TOTAL SQUARE FOOT:	725 TOTAL SF	00	THESSE MODULAR SHEDDING PLAN
OCCUPANT LOAD:	SINGLE FAMILY	01	COVER SHEET
USE GROUP:	ONE & TWO FAMILY DWELLING	02	FOUNDATION PLAN (LAYOUT)
CONSTRUCTION TYPE:	1B ROOF FRAMED	03	FIRST STORY FLOOR PLAN
SECTIONS:	NOT LESS THAN 5' TO PROPERTY LINE	04	FIRST STORY ELECTRICAL PLAN
BUILDING HEIGHT:	11'-9" / 1/2" TO TOP OF SILL TO PEAK	05	ELECTRICAL DETAILS
# OF STORIES:	1	06	FRONT & REAR ELEVATIONS
MINIMUM FLOOR FIN. ABOVE GRADE:	< 6"	07	LEFT & RIGHT SIDE ELEVATIONS
ROOF LOADS IN 1000 PSL:	NO (UN-SPRINKLERED)	08	CROSS SECTIONS
DESIGN LOADS:		09	SPRINKLER DETAILS
ROOF LIVE LOAD:	20 PSF (OS)	10	SUPPLY SIDE PLAN (LAYOUT)
ROOF DEAD LOAD:	15 PSF	11	PLAN (LAYOUT)
FLOOR LIVE LOAD:	40 PSF 1st STORY / 30 PSF 2nd STORY	12	PAVING DETAILS & DETAILS
FLOOR DEAD LOAD:	10 PSF	13	ROOF PAVING
HORIZONTAL WIND LOAD:	90 WPH (3 SEC Gust)	14	ROOF & EAVE SCHEDULE
EXPOSURE:	C	15	ROOF SHEET DETAILS
SEISMIC CATEGORY:	C	16	ROOF SHEET DETAILS
SITE CLASS D		17	ROOF SHEET DETAILS
APPLICABLE CODES		18	ROOF SHEET DETAILS
BUILDING CODE:	2008 INTERNATIONAL RESIDENTIAL CODE FOR ONE & TWO FAMILY DWELLINGS	19	ROOF SHEET DETAILS
ELECTRICAL CODE:	2008 NATIONAL ELECTRICAL CODE W/AMENDMENTS	20	ROOF SHEET DETAILS
ENERGY CODE:	2008 INTERNATIONAL ENERGY CONSERVATION CODE	21	ROOF SHEET DETAILS
MECHANICAL CODE:	2008 INTERNATIONAL MECHANICAL CODE	22	ROOF SHEET DETAILS
PLUMBING CODE:	2008 INTERNATIONAL PLUMBING CODE	23	ROOF SHEET DETAILS
FUEL & GAS:	2008 INTERNATIONAL FUEL & GAS CODE	24	ROOF SHEET DETAILS

**HILLTOP STRUCTURES, LLC**  
1051 Nolan Road  
Cumberland Furnace, TN 37051  
PH: (615) 780-0662  
www.hilltopmod.com

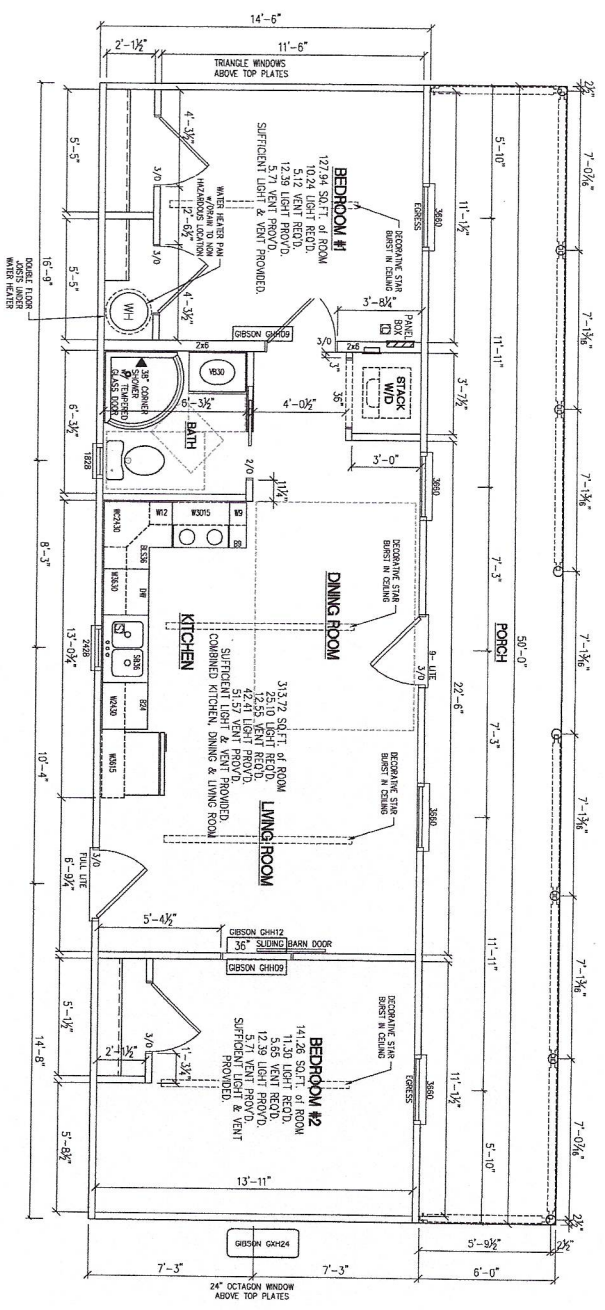
**HILLTOP Structures**

**HTS-PIONEER (LOT MODEL)**  
CUMBERLAND FURNACE, TN 37051  
BUILDER: HILLTOP STRUCTURES, LLC DBA CEDAR CREEK BUILDERS  
1075 GEORGE STREET  
HOPKINSVILLE, KY 42240

REVISIONS: 01, 02, 03, 04, 05, 06, 07, 08, 09, 10, 11, 12, 13, 14, 15, 16, 17, 18, 19, 20, 21, 22, 23, 24, 25, 26, 27, 28, 29, 30, 31, 32, 33, 34, 35, 36, 37, 38, 39, 40, 41, 42, 43, 44, 45, 46, 47, 48, 49, 50, 51, 52, 53, 54, 55, 56, 57, 58, 59, 60, 61, 62, 63, 64, 65, 66, 67, 68, 69, 70, 71, 72, 73, 74, 75, 76, 77, 78, 79, 80, 81, 82, 83, 84, 85, 86, 87, 88, 89, 90, 91, 92, 93, 94, 95, 96, 97, 98, 99, 100

DATE: 05/07/19  
SCALE: N.T.S.  
CHECKED BY: [Signature]  
DRAWN BY: [Signature]

HTS-PIONEER  
725  
PIONEER  
OVER PAGE  
SHEET: 0



- DATA PLATE
- STATE & 3RD PARTY LABEL LOCN.

- NOTES:
- THIS HOUSE PLAN MAY BE FLIPPED FROM FRONT TO BACK & OR LEFT TO RIGHT.
  - KITCHEN & BATH ROOM CABINETS MAY BE MOVED, ADDED OR OMITTED AS LONG AS THE PLUMBING DIAGRAM IS NOT MODIFIED.
  - ACTUAL WINDOWS & DOORS MAY BE UPGRADED AS LONG AS THEY ARE EQUAL TO OR BETTER THEN SPECIFIED.
  - ALL WINDOW OPENINGS WHICH ARE 7'2" ABOVE THE FINISHED GRADE, WITH THE BOTTOM OF THE CLEAR OPENING LESS THAN 24" ABOVE THE FINISHED FLOOR, SHALL BE PROVIDED WITH FIELD SUPPLIED AND INSTALLED WINDOW GUARDS PER: RB12.2.

FLOOR PLAN SQUARE FOOTAGES

1st Floor = 725 SQ.FT. of Living Space  
 Porch = 300 SQ.FT. of Porch  
 Total = 1,025 SQ.FT. Under Roof

- EXIT WALL HEADERS TO BE (2) 2x4 SP# #2 UNLESS NOTED OTHERWISE
- STRUCTURAL MEMBERS INDICATED ON THIS PLAN ARE ASSUMED TO HAVE FULL BEARING ON THE
- ALL STUDS INDICATED ON THIS PLAN ARE ASSUMED TO BE 2x4 SP# #2 UNLESS NOTED OTHERWISE
- STRUCTURAL BEAMS SHALL NOT BE NOTICED TO BE 2x4 SP# #2 UNLESS NOTED OTHERWISE
- FASTEN ALL HEADERS TO KING STUDS w/ (5) 0.120"x1" NAILS EACH END (TO BE MAILED OR IN ENDGRAN)
- REQUIREMENTS FOR STRAPS FASTENED TO EDGE OR OF LVL MEMBERS:
- (2) ROWS OF NAILS w/ 1/2" MIN. SPACING BETWEEN ROWS
- (2) ROWS OF NAILS w/ 1/2" MIN. SPACING BETWEEN ROWS
- MIN. SPACING PER ROW: 3" O.C.
- MIN. END DISTANCE: 2" O.C.
- MIN. SPACING PER ROW: 10d SINKER NAILS (0.120"x1")
- MIN. END DISTANCE: 4" O.C.
- MIN. END DISTANCE: 3" O.C.

THIS IS A PRELIMINARY DRAWING  
 HILLS-CR-005

<p>DATE: 10/16/19</p> <p>DATE: 05/07/19</p> <p>SCALE: 3/16"=1'-0"</p>	<p>REVISIONS</p> <p>BY:</p> <p>DATE:</p>	<p>THIS DOCUMENT AND THE SUBJECT MATTER HEREIN ARE THE PROPERTY OF HILLTOP STRUCTURES, LLC AND SHALL REMAIN THE PROPERTY OF HILLTOP STRUCTURES, LLC WITHOUT LIMITATION.</p> <p>www.hilltop.com</p>	<p>THIS DRAWING IS THE PROPERTY OF HILLTOP STRUCTURES, LLC. IT IS TO BE USED ONLY FOR THE PROJECT AND SITE SPECIFICALLY IDENTIFIED HEREON. IT IS NOT TO BE REPRODUCED, COPIED, OR TRANSMITTED IN ANY FORM OR BY ANY MEANS, ELECTRONIC OR MECHANICAL, WITHOUT THE WRITTEN PERMISSION OF HILLTOP STRUCTURES, LLC.</p> <p>DATE: 10/16/19</p> <p>BY: [Signature]</p> <p>PROJECT: HILLS-CR-005</p>	<p>HILLTOP STRUCTURES, LLC</p> <p>851 Hilltop Road</p> <p>Columbia, TN 37051</p> <p>TEL: 615-799-0402</p> <p>www.hilltop.com</p>
---	--	--	---	--

CUSTOMER/PROJECT:

HTS-PIONEER (LOT MODEL)

1021 MCKAY ROAD

CUMBERLAND FORMAN, TN 37051

BUILDING:

HILLTOP STRUCTURES, LLC, DBA CEDAR CREEK BUILDERS

1075 GEORGE SHAW ROAD

HOPKINSVILLE, KY 42240

DRAWING:

FLOOR PLAN

DATE:

10/16/19

BY:

[Signature]

PROJECT:

HILLS-CR-005

SHEET:

2