



Lab Instrumentation

The heartbeat of your laboratory.


CardinalHealth
Essential to care™

Our diagnostic instrumentation portfolio has the automated solutions needed to keep your lab running efficiently.

Your first priority is your patients. Ours is helping you get them fast and accurate test results. By providing our laboratory customers with the automated instrumentation that's right for them, we both work toward achieving better diagnosis and better care.

Whatever size laboratory, Cardinal Health is your resource for the right instrumentation. Our relationships with leading manufacturers give us access to more choices at the right prices, which are then passed on to you. From point-of-care devices to hematology and clinical chemistry analyzers, this expansive product offering includes brand names you've come to rely on every day.

Experienced diagnostic specialists and sales representatives are ready to help you identify which analyzers are right for your lab application. We take the time to customize solutions so you get the results that positively impact your facility without complicating your current processes.

We thank you for choosing Cardinal Health for your Laboratory needs — together, we're helping to improve patient care with the most efficient laboratory testing.

When outfitting your lab, partner with a trusted source — one source to supply all your automation needs.



Table of contents

Anatomic Pathology _____	2-11
Blood Bank _____	12
Clinical Chemistry/Immunoassay _____	12-18
Coagulation _____	19
Hematology _____	20-22
Microbiology _____	22-24
Molecular Microbiology/POC _____	24
Toxicology _____	25-26
Urinalysis _____	27



Tissue-Tek Film® Coverslipper

The clear choice.

The Tissue-Tek Film® Coverslipper is the fastest and only film coverslipper in the world capable of connecting to the Tissue-Tek Prisma® Plus stainer to increase laboratory productivity. With over 3 billion slides coverslipped with our xylene activated adhesive-backed Tissue-Tek® Coverslipping Film, now in its 5th generation, the Tissue-Tek Film Coverslipper is the clear choice for laboratories worldwide for over 30 years. The Tissue-Tek Film Coverslipper's unprecedented throughput of 1,080 slides per hour remains unmatched. Moreover, its fast-drying time minimizes the long wait time to air-dry trays of glass coverslipped slides. This results in users providing clean high quality dried slides to the pathologists faster. Whether standalone or connected to the Tissue-Tek Prisma stainer, the Tissue-Tek Film Coverslipper's unload carousel holds up to 240 slides, providing on-board storage and minimizing frequency of unloading small batches of coverslipped slides. Connecting the Tissue-Tek Film Coverslipper to the Tissue-Tek Prisma Plus stainer creates an integrated, fully automated walkaway staining process from slide baking to slide drying.

Cat. No.	Description
SA4740	Tissue-Tek Film® Coverslipper
S4743	Tissue-Tek Film® Coverslipper with Barcode Reader
SA6134	Tissue-Tek Prisma® Link System Kit for Tissue-Tek Film® Coverslipper



Tissue-Tek® Glas™ g2 Glass Coverslipper

Fast and robust glass coverslipping.

The Tissue-Tek® Glas™ g2 Glass Coverslipper handles histopathology and cytology slide sections by reproducing traditional hand coverslipping and ensures accurate coverslip placement, high clarity and bubble free coverage. The Tissue-Tek Glas g2 provides high reliability while delivering up to 400 slides per hour. The Tissue-Tek Glas g2 utilizes automation that offers the latest technology ensuring that each slide is perfectly coverslipped and clean. Up to 9 customizable programs can be stored that specify different coverslip sizes, speed, and volume of mounting medium to handle different specimen types and applications. Tissue-Tek Glas g2 Coverslips conveniently preloaded in disposable holders are available in lengths of 40, 50, and 60 mm, which provides users the efficiency needed in any laboratory. Users may manually load glass coverslips in provided reusable holders. Whether using standalone or connected to the Tissue-Tek Prisma® stainer, the Tissue-Tek Glas g2 unload carousel holds up to 240 slides, providing on-board storage and minimizing frequency of unloading small batches of coverslipped slides.

Cat. No.	Description
TN6500	Tissue-Tek® Glas™ g2 Glass Coverslipper
S6503	Tissue-Tek® Glas™ g2 Glass Coverslipper with Barcode System
TN6168	Tissue-Tek Prisma® Link Between Tissue-Tek Prisma® and Tissue-Tek® Glas™ g2



Tissue-Tek® Cryo₃® Flex Cryostat and Mohs

Innovative technology.

The Tissue-Tek® Cryo₃® Flex Cryostat is the 3rd generation of the established, reliable and trusted Cryo₃ platform for fast sectioning of frozen tissue specimens. It was designed to decrease the time to get complete sections, and in parallel to preserve valuable tissue. The Tissue-Tek® Cryo₃® Flex Cryostat produces superior sections from 1 to 99 µm using a temperature-controlled blade holder and a 3D Precision Chuck to accurately align the block face to the blade, reducing operator's trimming time and preserving specimens. The sturdy chuck retains its position when locked and unlocked, eliminating any time and effort spent realigning the cutting angle. Users can now leverage the newly developed Anti-Roll Rake that was designed to best mimic the preferred and widely accepted "Brush Technique" to prevent sections from rolling, which in addition, reduces the learning curve of new users making them proficient faster. A color touch LCD screen provides a visual display of critical sectioning information such as current chamber temperature, section thickness, and trimming thickness. The Cryobar® offers 12 positions, allowing operators to use the Cryomold® method or direct method at the same time. The Cryo+™ area of the Cryobar freezes to -50°C, within 5 minutes after activation.

Cat. No.	Description
6200SA	Tissue-Tek® Cryo ₃ ® Flex - Basic
6201SA	Tissue-Tek® Cryo ₃ ® Flex - Disinfection
6202SA	Tissue-Tek® Cryo ₃ ® Flex - Disinfection and Motorized
6209S	Tissue-Tek® Cryo ₃ ® Flex Cryostat - Mohs



Tissue-Tek® AutoTEC® a120 Automated Embedding System

Make the move to automated embedding.

The second-generation Tissue-Tek AutoTEC® a120 remains the industry's first and only fully automated embedding system that eliminates the tedious and labor-intensive need to manually orient and embed tissue specimens and form tissue or cell paraffin blocks. The AutoTEC technology, combined with the Tissue-Tek® Paraform® Sectionable Cassette System ensure that the orientation of specimens, determined by pathologists and pathologist assistants, is locked from grossing to microtomy for all routine tissue types, thereby eliminating the risk of orientation mistakes and tissue loss for increasing patient safety. Enhanced features include a cassette barcode reader for LIS connectivity and traceability of specimen blocks, the new SMARTair™ Technology to remove excess paraffin, and the larger 15-inch touchscreen monitor and enhanced operating system both deliver improved user convenience. With its smaller footprint, the AutoTEC a120 can be installed in small laboratories, and Sakura Finetek's Tissue-Tek® iSupport™ program provides remote diagnostics and peace of mind. The AutoTEC a120 offers a high throughput of up to 120 cassettes/hour and enables laboratories to reallocate valuable personnel now manually working at embedding stations, and to conveniently level the daily workload in a lean continuous workflow.

Cat. No.	Description
SF7090	Tissue-Tek AutoTEC® a120 Automated Embedding System



Tissue-Tek® TEC™ 6 Embedding Console System

Full embedding control at your fingertips.

The Tissue-Tek® TEC™ Series has been the Histology laboratory's preferred choice in embedding for decades. The Tissue-Tek® TEC™ 6 Embedding Console System continues that tradition while further enhancing the reliability, comfort, and ease-of-use that users have come to know and expect. Designed to be the ideal tissue embedder for laboratories of any size, the robust and ergonomic modular system offers a streamlined, adjustable workflow that is both comfortable and simple-to-use for any user. With the Tissue-Tek TEC 6, you are in control of your embedding experience. The color touchscreen and easy-to-navigate onscreen controls allow for easy setup and operation, and the graphical user interface enables you to set and display temperatures in all of the heated and cooled areas with just a touch. The brightness of the LED work light can be adjusted directly from the main screen to improve specimen visibility and eliminate the clutter of external lamps. The instrument is also always ready when you are with the user-programmable scheduler that automatically readies or shuts down both the Embedding and Cryo Modules by day of the week and even across overnight shifts.

Cat. No.	Description
5110B	Tissue-Tek® TEC™ 6 Embedding Console System
5108B	Tissue-Tek® TEC™ 6 Embedding Module
5109B	Tissue-Tek® TEC™ 6 Cryo Module



Accu-Cut® SRM™ 300 LT Manual Microtome

Illuminating microtomy.

The Accu-Cut® SRM™ 300 LT Manual Microtome is the first and only manual microtome with a patented multi-colored LED backlit chuck to illuminate paraffin embedded tissue samples making them much easier to see and safer to section. The backlight increases contrast between specimens and paraffin so users can see exactly where the tissue is located to prevent cutting through a small biopsy or previously sectioned block. The Accu-Cut SRM 300 LT features a 3D Precision Chuck for accurate alignment of the block face to the blade on all three axes (XYZ), which is crucial for recuts. The sturdy chuck retains its position when locked and unlocked, eliminating any time and effort spent realigning the cutting angle. The 3D Precision Chuck can quickly and accurately be returned to a zero position with the dial indicators. The compact and ergonomic design helps to minimize cumulative stress on the user and increases both efficiency and productivity. The course hand wheel is optimally sized and positioned for comfortable trimming in either clockwise or counterclockwise rotation and is switchable by the user. The Accu-Cut SRM 300 LT includes many exclusive features that reduce the risk of accidental injuries associated with blade exposure.

Cat. No.	Description
1300-SAKU	Accu-Cut® SRM™ 300 LT Manual Microtome
1300N-SAKU	Accu-Cut® SRM™ 300 LT Manual Microtome, Non-Retracting



Tissue-Tek AutoSection® Automated Microtome

Fully automated SMART microtomy.

The Tissue-Tek AutoSection® provides one-touch trimming and programmable sectioning with a host of built-in safety features. Tissue-Tek AutoSection automatically orients the block to the blade edge, using patented sensing and automated 3-D specimen holder technology for precise XYZ orientation. It standardizes block orientation, even if the block was trimmed or sectioned on a different microtome—saving valuable tissue and technician time. With AutoTrim™, the Tissue-Tek AutoSection trims blocks automatically in just seconds with one-touch operation. This tissue-preserving feature is optimized for Tissue-Tek® Paraform® Cassettes, although it also accommodates most common cassettes. Multiple built-in safeguards make Tissue-Tek AutoSection the leader in microtome user safety. One-touch trimming and sectioning eliminate repetitive hand wheel motions and reduce the risk of musculoskeletal disorders, while the sliding dispenser feature of Accu-Edge® blades eliminates direct handling of blades. Compared to manual and motorized microtomes the AutoSection showed the highest precision in section thickness using IHC staining and digital imaging technology. Programmable sectioning, it enables laboratories to implement standardized protocols for specific tissue or block types.

Cat. No.	Description
S5010	Tissue-Tek AutoSection® Automated Microtome

S9022 Cassette Printer (Manual)



S9020 Cassette Printer with AutoLoader

Tissue-Tek® SmartWrite® Cassette Printers

Experience fast on-demand or batch cassette printing in color.

The SMART system solution for cassette printing. Increase efficiency for your laboratory while reducing the risk of misidentification of specimens with the Tissue-Tek® SmartWrite® Cassette Printers. SmartWrite Printers feature thermal transfer printing technology that is noise, fume and UV cure-free. Print quality is crisp, permanent and resistant to histological chemicals. Its reliable robotic cassette feed enables cassette printing every 7.5 seconds. These printers also enable 300 dpi high-resolution and high-content 1D and 2D barcodes, alpha numeric, graphic and logo printing. The Tissue-Tek SmartWrite Software and drivers provide a single SMART solution for template design, printer management and LIS integration. The Tissue-Tek SmartWrite Cassette Printers have been optimized and validated for black or color printing on Tissue-Tek® Uni-Cassette®, Histo-Tek® Cassettes with Lid Attached, and Tissue-Tek® Paraform® Frames, creating a turn-key system for the best printing results. The Tissue-Tek SmartWrite Cassette Printer with AutoLoader can be conveniently placed next to the grossing station.

Cat. No.	Description
S9020	Tissue-Tek® SmartWrite® Cassette Printer with AutoLoader
S9022	Tissue-Tek® SmartWrite® Cassette Printer (Manual)

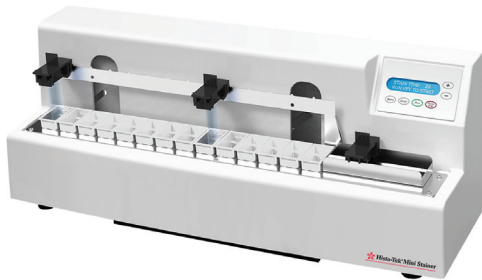


Tissue-Tek® SmartWrite® Slide Printer

On-demand slide printing.

Minimizing slide labeling errors in your laboratory has now become easier. The Tissue-Tek® SmartWrite® Slide Printer provides fast on-demand high resolution alpha numeric and 1D/2D barcode printing with a footprint small enough to fit next to the microtome. The Tissue-Tek SmartWrite Slide Printer is a high-resolution thermal transfer printer designed for on-demand printing of colored identifiers directly on to microscope slides for use in pathology and cytology laboratories. The uniquely formulated thermal ink provides easy to read printing that is chemically resistant and smudge proof when dry. The high resolution (300 dpi) makes it possible to print alpha numeric characters, as well as 2D barcodes and graphics. The SMART system solution for on-demand slide printing, Incorporate the Tissue-Tek SmartWrite Slide Printer into your microtome workstation for a SMART system solution for on-demand slide printing, enabling efficiency and reducing the risk of misidentification of patient cases.

Cat. No.	Description
SK9021	Tissue-Tek® SmartWrite® Slide Printer
S9024	Tissue-Tek® SmartWrite® Scanner
S9026	Tissue-Tek® SmartWrite® Control PC with Touchscreen



Histo-Tek® Mini Stainer

Automated slide staining for your frozen sections.

The Histo-Tek® Mini Stainer standardized the staining process for optimal quality and consistency. It was designed with flexibility in mind, yet compact to fit any laboratory bench space. The Histo-Tek Mini Stainer is a small, robust linear stainer created to meet your laboratories demands. The small 50 mL reagent containers not only reduce cost but also minimizes reagent waste. With up to 3 running water stations, you are assured of crisper specimen staining. The simple to use keypad allows the operator to program within minutes with key parameter adjustments such as time, agitation and start position. Fume cover and activated carbon filter are standard features to ensure laboratory personnel safety. Its small footprint of (W x D x H) 24 x 8.5 x 11 in. is guaranteed to fit on any laboratory workbench.

Cat. No.	Description
1920	Histo-Tek® Mini Stainer



Histo-Tek® SL Slide Stainer

The Histo-Tek® SL Slide Stainer standardizes the staining process to optimize quality while reducing errors. The Histo-Tek SL Slide Stainer allows for up to 15 programmable staining protocols with up to 35 steps. The multi-directional robotic arm allows for either progressive or regressive staining protocols and the 20 or 30-slide racks option make it ideal for low to medium volume laboratories. It is a simple and intelligent instrument for unsurpassed productivity – slide after slide. Additional relevant features include: built-in fume extraction to improve lab staff safety, special stain reservoirs to run H&E or special stains, and an easy exchange of protocols through USB to standardize protocols throughout the lab while using multiple units. Its small footprint of 33 W x 31 D x 16 H inches fits on standard lab countertops.

Cat. No.	Description
S1900	Histo-Tek® SL Slide Stainer



Tissue-Tek Prisma® Plus Slide Stainer

The new Tissue-Tek Prisma *Plus* remains as the highest throughput stainer with up to 530 slides per hour while still producing consistent high-quality slides. Enhanced features include barcode scanning and documentation, reagent grouping and Tissue-Tek® iSupport™ Service Link with remote diagnostics providing peace of mind. To help with CAP compliance, users can now scan the barcode of the newly introduced Tissue-Tek Prisma® H&E Stain Kit #1 and automatically log the information of that kit and its components. The Tissue-Tek Prisma *Plus* stores and documents the expiration date and time reagents were loaded on the instrument. The Tissue-Tek Prisma *Plus* utilizes efficient robotics and intuitive software to run multiple protocols simultaneously. With the flexible choice of 50 stain component color assignments, running H&E, Pap or Special Stains has never been easier. Users can better visually differentiate the stain components and their location within the stainer. Various stains running in parallel are easily customizable with the choice of 50 user defined staining protocols, meeting the demands of any pathologist. Connecting the Tissue-Tek Prisma *Plus* with the Tissue-Tek Film® Coverslipper or Tissue-Tek® Glas™ g2 Coverslipper creates an integrated, fully automated walkaway staining process from slide baking to slide drying. Laboratories can now further increase productivity, especially appreciated during daily peak demand hours, further reducing user stress levels by forwarding high quality stained and coverslipped slides to the pathologists faster.

Cat. No.	Description
SA6170	Tissue-Tek Prisma® Plus Standard Configuration
SA6171	Tissue-Tek Prisma® Plus Special Staining Configuration
SA6134	Tissue-Tek Prisma® Link System Kit for Tissue-Tek Film® Coverslipper
TN6168	Tissue-Tek Prisma® Link Between Tissue-Tek Prisma® and Tissue-Tek® Glas™ g2



Tissue-Tek VIP® 6 AI Vacuum Infiltration Tissue Processor

The first choice in tissue processing now with advanced infiltration.

The Tissue-Tek VIP® 6 AI Vacuum Infiltration Processor continues with Sakura reliability and innovation to provide the first and only tissue processor with automated onboard preparation of mixed solutions, automatic in-process reagent exchange, and Tissue-Tek® iSupport™ remote monitoring, which allows for safe, high-quality processing while saving time. Using advanced infiltration methods, the Tissue-Tek VIP 6 AI was designed to provide high-quality tissue processing results for all tissue types, including fatty tissues. The Tissue-Tek VIP 6 AI is the first and only tissue processor on the market capable of automatically mixing specified reagents onboard to create mixed solutions, providing advanced infiltration of fatty tissues by enhancing dehydration and defatting without extending protocol times. Including 3 new mixing mode options, bringing the total number of options to 10, the Tissue-Tek VIP 6 AI is able to provide highly effective yet gentle agitation of the reagent in the retort for excellent reagent penetration of tissues. The Solution Manager of the Tissue-Tek VIP 6 AI monitors reagent levels during operation for safe and worry-free processing. Providing fresh reagent from the 2 bulk reagent reservoirs during processing if needed, the Solution Manager ensures that the Tissue-Tek VIP 6 AI offers the highest level of processing confidence both during the day when staff is available or overnight during autonomous operation.

Cat. No.	Description
6040	Tissue-Tek VIP® 6 AI Vacuum Infiltration Processor



Xpress® x120

Tissue-Tek Xpress® X120 Rapid Tissue Processor

Bring the new era in rapid tissue processing to your lab

The Tissue-Tek Xpress® x120 represents the latest advances in the evolution of rapid tissue processing. Optimal for your histology lab, the Tissue-Tek Xpress x120 makes a positive impact on pathology, using only four reagents and providing complete tissue processing in approximately 1 hour. The Tissue-Tek Xpress X120 meets objective Lean and Six Sigma criteria. The Tissue-Tek Xpress X120 utilizes breakthrough microwave technology, optimized molecular-friendly reagents, and proven vacuum infiltration techniques, and permits processing biopsy and routine specimens in the same run, while still maintaining specimen integrity. This rapid tissue processor processes up to 960 cassettes in an 8-hour shift. Up to 40 cassettes can be loaded every 20 minutes. And the total volume of reagents used is reduced by about 80% compared with traditional methods. Reagents are presented ready-to-use in disposable containers. This gentler process preserves DNA, RNA, and proteins in the paraffin block when specimens are processed fresh or pre-fixed with Tissue-Tek Xpress® Molecular Fixative. Choose from two models.

Cat. No.	Description
TN7720	Tissue-Tek Xpress® x120 Rapid Tissue Processor
SA7139	UPS system



HM 325 Rotary Microtome

Cut high-quality paraffin sections without a power supply with the robust HM 325 Rotary Microtome. A premier manual rotary microtome with additional capability to support rapid set-up and cleaning for improved workflow. With a 64 mm vertical stroke, Super Mega™ Cassettes in a horizontal orientation. The wrap-around, detachable waste tray offers safe and speedy debris collection and disposal. Easily attain re-orientation of pre-cut blocks utilizing the XY fine orientation and zero positioning. The HM 325 features retraction at the return travel to protect the specimen and manual coarse advance for fast working. Compatible with the Section Transfer System™ and Cool Cut™.

Cat. No.	Description
902100	HM 325 Microtome; Instrument only
902100A	HM 325A E Package – includes E Blade Holder, Quick Release Cassette Clamp
902100ER	HM 325A ER Package – includes ER Blade Holder, Quick Release Cassette Clamp



HM 340E Semi-Automated Microtome

Designed for precision and stability which yields quality ribbons even for difficult to cut paraffin sections, the HM 340E Electronic Microtome is an ergonomically designed, electronic rotary microtome featuring a stepping-motor with advance technology for precision and stability to provide superior sectioning results. With a 72 mm vertical stroke, you can attain efficient sectioning of macro and Super Mega™ cassettes. The memory functions enable specimen positioning with XY fine orientation. The wraparound waste tray simplifies preparation and clean up. Users can obtain their best ergonomics with the removable control panel. The HM 340E is compatible with the Section Transfer System™ and Cool Cut™.

Cat. No.	Description
905190ER	HM 340E ER Package – includes Blade Carrier ER, Universal Cassette Clamp
705800	Disposable Blade Carrier E
705830	Disposable Blade Carrier ER
715050A	Standard Specimen Clamp
715060	Universal Specimen Clamp



Cool-Cut™ and Section Transfer System™ (STS) used with microtome.



Cool-Cut™, paraffin block cooler



Section Transfer System™ (STS)

Cool-Cut™ and Section Transfer System™ (STS)

Discover the efficiencies of a complete sectioning solution. Simply pair one of our rotary microtomes with the Cool-Cut™, paraffin block cooler, and Section Transfer System™ (STS). These accessories are designed to help laboratories improve quality and efficiency – two key influencers of positive patient outcomes. The Cool-Cut provides object cooling for high-quality sectioning and process efficiency. The Section Transfer System automatically transfers section ribbons from the blade to the water bath reducing manual handling. Their compact, integrated design saves valuable bench space. Both are designed to be used exclusively with the HM 325, HM 340E, and HM 355S rotary microtomes.

Cat. No.	Description
771200RIC	Section Transfer System - microtome accessory
771110RIC	Cool-Cut with Universal Clamp - microtome accessory
771120RIC	Cool-cut with Standard Clamp - microtome accessory



PrintMate AS™ Cassette printer

Print on-demand at the grossing station with the Printmate AS. Each cassette prints in 10 seconds or less and allows the cassette to be printed at the time of use. The compact footprint enables the printer to easily fit next to the grossing station. The Printmate AS prints a 2D barcode that is able to contain complete case identification information. Using this system, error-filled handing writing process can be eliminated and when paired the printed barcodes can automate sample identification in downstream processes.

Cat. No.	Description
A83800001*	PrintMate AS™ 150
A83800002*	PrintMate AS™ 450
A83800003*	PrintMate AS™ 900
A83800004*	PrintMate AS™ 150 Printing System
A83800005*	PrintMate AS™ 450 Printing System
A83800006*	PrintMate AS™ 900 Printing System

**Add B as a suffix on the Cat No. above for the corresponding Total Care instrument*



SlideMate AS™ On-Demand Slide Printer

The next generation slide printer from features a space-saving form that is a perfect fit next to the microtome. The SlideMate AS promotes single-piece workflow through unique features designed specifically for on-demand printing including a fully integrated color touch screen and easy-to-use software. A built-in barcode scanner reads 2D barcode information directly from the cassette and imports the data onto slide label. The unit can easily connect to computers of Laboratory Information Systems (LIMS). With the SlideMate AS, you can eliminate handwritten slide labels, and minimize errors.

Cat. No.	Description
A83900001*	SlideMate AS™ Basic Printer
A83900002*	SlideMate AS™ Basic Printing System
A83900004*	SlideMate AS™ On-Demand Printer
A83900005*	SlideMate AS™ On-Demand Printing System
A83910002	SlideMate AS™ Slide Delivery System
A83920016	SlideMate AS™ Spare Hopper
A83910005	SlideMate AS™ Gateway Software
A83910001	SlideMate AS™ Thermal Transfer Ribbon

**Add B as a suffix on the Cat No. above for the corresponding Total Care instrument*



ArcosSL™ Slide Management System

The ArcosSL™ Slide Management System is designed to enhance sample traceability throughout the sorting, archiving, retrieval and re-archiving of histology slides, saving laboratories time and resources. ArcosSL reads up to 240 slides at a time by scanning each slide's unique identifier, then associating each to a specific tray position and storage location within an automated archive. This is designed to help reduce the risk of losing slides, improve operational efficiency and expand workflow capacity.

The Thermo Scientific™ ArcosSL™ Slide Management System reads 240 slides at a time by scanning each slide's unique identifier. The system scans, photographs, and records each slide, associating it to a specific tray position and storage location within an automated archive for easy retrieval. This sonic sensor scanning technology provides accurate, rapid detection via an internal camera that is able to read quick codes, QR codes, DPM codes, and OCR software. Check-in/out controls provide visibility into who retrieved a slide, why it was needed, and when it is due to return. Slides that are checked out longer than anticipated are documented. Upon return, slides can be placed in any position on the ArcosSL tray and the scanner will update the slide's location in the database automatically.

Cat. No.	Description
A85300001	ArcosSL™ Slide Management System
A85310001	Additional ArcosSL™ PDA



Arcos™ Tissue Block Management System

Take control of your archives with the Arcos Tissue Block Management System. The system is designed to increase productivity, minimize errors, and keep your laboratory's resources focused on what matters most—positive patient outcomes. Lost blocks become a thing of the past with the Arcos system. It maintains a complete record of all blocks in storage that can be easily accessed and searched at any time. Arcos offers Check-out and check-in controls – know where every block is, who checked it out, when it's due back and why it was needed. Readily identify blocks checked out longer than anticipated. With the Arcos system, eliminate errors endemic to the hand-sorting process. No time is lost searching for a case to return a re-cut block; after check-out, blocks can be returned to any tray. Once scanned, the database is automatically updated. The Flash storage in the Arcos Scanner is automatically updates your database to your choice of secure storage; hard drive, external network- or cloud- based. The Arcos system has been shown to save thousands of man-hours per year in busy laboratories – up to one-and-a-half full time employees. The system's speed and efficiency allow you to keep your laboratory's resources focused on what matters most – positive patient outcomes.

Cat. No.	Description
B84700001	Arcos™ Block Management System; includes: Arcos, scanner, computer with monitor, PDA and label printer
B84700002	Arcos™ scanner only

Blood Bank

Ortho Clinical Diagnostics



ORTHO VISION® Swift Analyzer

ORTHO VISION® Swift Platform automates in vitro Immunochemistry testing of human blood utilizing ID-MTS™ Gel Cards improving workflow and lab standardization. Automated test processing functions include liquid pipetting, reagent handling, incubation, centrifugation, reaction grading and interpretation, and data management requirements using ID-MTS Gel Cards and digital image processing.

Cat. No.	Description
6904577	ORTHO VISION Swift
SP6904576	ORTHO VISION Swift Max



Ortho™ Workstation for ID-MTS™ Gel Cards

ORTHO™ workstation is a combined bench top workstation providing incubation and centrifugation, utilizing ID-MTS™ Gel Card Column Agglutination Technology.

Cat. No.	Description
SP6904630	Workstation
6904630AS	Workstation with Sartorius pipettor
SP6904630T	Workstation with ID-Tipmaster™ pipettor
SPLH735081MT	Sartorius electronic pipettor
SPMTS9640	ID-Tipmaster™ pipettor
SPMTS9610	MTS™ 0.5 mL dispenser
SPMTS9612	MTS™ 0.1 mL dispenser
SPMTS9650	MTS™ worktable (24 cards)

Clinical Chemistry/Immunoassay

Abbott



Abbott Point of Care Piccolo Xpress Chemistry Analyzer

Small in size, yet big on accuracy, reliability and reproducibility, the Piccolo Xpress delivers real-time blood chemistry diagnostic information within minutes for a wide range of clinical chemistry needs. A fully-automated, advanced instrument, the Piccolo is used at the point of care in a variety of settings both inpatient and outpatient, including urgent care clinics, oncology clinics, physician's office laboratories, pediatric offices, and many others. Piccolo Xpress offers the most comprehensive menu of CLIA waived tests on a single platform and represents over 90% of the routine tests ordered by physicians.

Cat. No.	Description
7P05-01	Piccolo Xpress Chemistry Analyzer



D-10 Hemoglobin Testing System

The D-10™ instrument provides comprehensive, fully automated hemoglobin testing in a compact footprint. Combining diabetes and β -thalassemia testing on a single platform, the system offers simple, efficient operation for clinics, physician offices or clinical laboratories. Easy to use, the D-10™ includes an interactive instrument training CD-ROM and multilingual operational support.

Developed for flexibility and reliability, the D-10™ features an automatic system startup checklist and touch screen operation. One-step cartridge switching and automatic sample bar code reading increase workflow efficiency. Whole blood primary tube sampling eliminates off-line sample preparation. Separate programs for fast HbA1c or HbA2/F/A1c quantitation further simplify workflow. At only 15.8 inches wide by 21 inches deep by 18.8 inches high, the D-10™ requires a minimum amount of laboratory space.

This high-performance platform sets a new standard for comprehensive hemoglobin testing. Deliver a full picture of diabetes treatment progress in fewer steps with the D-10™ system.

Cat. No.	Description
BR2200220	Bio-Rad D-10 HbA1c HPLC System
BR2200600	D-10 Rack Loader



ETI-Max 3000 Analyzer

The ETI-Max 3000 is a fully automated microtiter plate analyzer performing the complete sample processing (sample pre-dilutions, sample and reagent dispensing, incubations, wash processes, plate transports) as well as the photometric measurement and evaluation. The instrument is controlled via the Windows PC software ETI-Max 3000. This software, specifically designed for this purpose, allows the user to process the pre-defined assays of DiaSorin. The clear structure with intuitive user-guidance allows simple and quick operation of daily routine jobs as well as programming of user-specific assays.

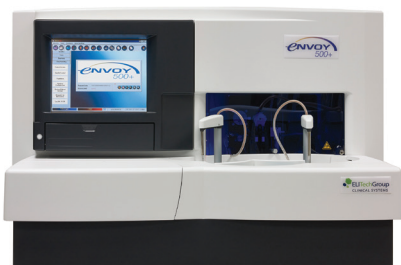
Cat. No.	Description
B1032-1	ETI-Max 3000 Analyzer



LIAISON® XL Analyzer

The LIAISON® XL analyzer is a fully-automated, continuous loading chemiluminescent immunoassay (CLIA) analyzer for in vitro diagnostic analysis on human serum or plasma. The system menu includes infectious disease, bone and mineral and endocrinology assays. It is to be used only with immunoassays that are marketed by DiaSorin for the LIAISON® XL analyzer. The analyzer uses DiaSorin proprietary reagents in which an analyte is measured in a sample by the reaction of a magnetic particle solid phase coated with antigen or antibody and a chemiluminescent tracer. The reagents are in a ready-to-use integral with most calibrators in the reagent integral.

Cat. No.	Description
I0050	LIAISON® XL Analyzer



Envoy® 500+ Chemistry Analyzer

The Envoy® 500+ performs approximately 490 tests per hour, allowing it to handle the workload of the busiest labs. The Envoy® 500+ delivers the time and money saving features your lab requires with an integrated four-parameter Dry ISE module, reusable glass cuvettes, positive sample and reagent identification, clot detection, liquid level sensing and many more. Plus, the Envoy® 500+ is backed by the best service and support in the industry.

Cat. No.	Description
3-07050-01	Envoy 500+

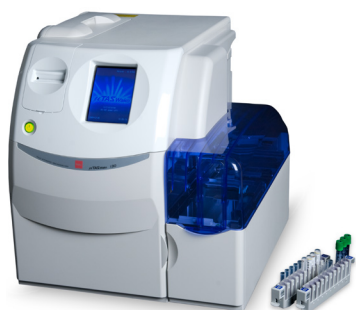


ChloroChek® Chloridometer®

The perfect CF diagnostic companion to the Macroduct® Sweat Collection System. The ChloroChek® Chloridometer® was designed to work with the Macroduct® Sweat Collection System for analyzing sweat chloride for the laboratory diagnosis of cystic fibrosis. ChloroChek® is easy to operate and gives results in less than 20 seconds.

Cat. No.	Description
V3400	ChloroChek

FUJIFILM



µTASWako® i30 Immunoanalyzer System from FUJIFILM

The automated µTASWako® i30 system from FUJIFILM utilizes FDA-cleared µTASWako® AFP-L3 and DCP tests to aid in Hepatocellular Carcinoma (HCC) Risk Assessment.

- FDA cleared AFP-L3% test lower detection limit of 0.5% AFP-L3
- FDA cleared DCP test lower detection limit of 0.10 ng/mL DCP
- Automated, microfluidic technology minimizes hands-on time
- Throughput of 25 results per hour
- Bench-top footprint of 2 cubic feet and 150 pounds
- STAT capability
- LIS integration capability
- RFID tag enables reagent tracking
- Intuitive touch panel operation
- On-board refrigerated reagents
- Easy access to consumables and waste
- Minimal routine maintenance

Cat. No.	Description
99160301	µTASWako® i30 Immunoanalyzer System from FUJIFILM

HORIBA Medical



Pentra C400 Chemistry Analyzer

From routine to specialty tests, perform them all on a single benchtop system.

- Routine metabolic, TDMs, DAUs, glucose, HbA1c, Vitamin D and much more!
- Sample types include serum, plasma and urine
- Up to 55 assays on board
- 40 open channels
- Optional ISE Module (Na+, K+, Cl-)
- Maximum Throughput: 420 test/h
- No water system required

Cat. No.	Description
5300001388	Pentra C400 ISE System
5300001394	Pentra C400 Standard System



ThunderBolt

The ThunderBolt is an innovative 2-plate, fully automated, open platform that is compact and cost efficient. The user friendly and flexible software is capable of programming a broad range of protocols. The ThunderBolt is available for both ELISA and Chemiluminescent (CLIA) applications.

Cat. No.	Description
GS00300	ThunderBolt ELISA Analyzer
GS00300CL	ThunderBolt ELISA+CLIA Analyzer



BOLT

The BOLT is a one-plate, open platform on a compact footprint that offers all the tools for processing an ELISA or CLIA assay (pipette, washer, incubator, shaker, reader). Our interactive user-friendly software provides a simple laboratory experience for instrument operation.

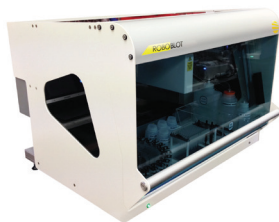
Cat. No.	Description
500GSD	BOLT ELISA Analyzer
500CL	BOLT ELISA+CLIA Analyzer



AIX1000

The AIX1000 is the world's first fully automated system for nontreponemal RPR Syphilis testing. Simply load your reagents and up to 192 samples, then walk away. The AIX automates the processing, analysis, reporting and archival of results for both RPR screens and titers.

Cat. No.	Description
GSD400	AIX1000 Automated RPR Analyzer
GSD011600	AIX1000 RPR Reagent Kit



RoboBlot™ Offered by Gold Standard Diagnostics

The RoboBlot™ is the ideal solution for full strip immunoassay automation, from sample addition to strip scanning. With fast and quiet operation, and a user friendly interface, this flexible and convenient instrument provides the laboratory with a reliable and robust solution for walk-away strip processing.

Cat. No.	Description
RBT001	RoboBlot Automated Strip Immunoassay Analyzer



BeeBlot™ Offered by Gold Standard Diagnostics

The BeeBlot™ platform performs all immunoassay steps except for addition of sample. Once samples have been added manually, the instrument can run up to 12 different pre-programmed assays, for automating molecular based and Western Blot strip-based assays. The instrument uses reversible peristaltic pumps to dispense reagents to the sample tray, and optionally from the software, the pumps can be reversed to save reagent back into the reagent bottles. The tray for the samples and membrane strips allows for rocking, tilting and level position during incubation. The operator interface is via a keypad and display. Once the samples have been added to the tray the assay is automated, and the developed strips in the tray can be removed for analysis.

Cat. No.	Description
GSBBLOTNH	BeeBlot Semi-Automated Strip Immunoassay Analyzer

Clinical Chemistry/Immunoassay

Ortho Clinical Diagnostics



VITROS® XT 7600 Integrated System

Ortho is leading the change in what should be expected from labs' performances. Embracing DIGITAL CHEMISTRY™ with the VITROS XT 7600 has enabled Ortho to provide a solution that can meet the challenges of today and tomorrow.

Lab Benefits:

- Market leading first pass yield of 96.5%
- Improved interference detection
- Enables XT Microslide technology
- Improves our proven proprietary technologies
- Future-readies your lab for the challenges of tomorrow*

*Compared to wet technologies

Cat. No.	Description
SP6844461	VITROS® 7600 System



VITROS® 5600 Integrated System

This high-capacity system uses "integration by design" to provide greater efficiency that improves labor effectiveness and cuts costs. Increase capacity with 150 reagent positions that allow over 100 assays to be on-board at once. The VITROS® 5600 System provides greater efficiency, lower maintenance and minimal calibration by integrating MicroSlide, MicroTip, MicroWell, Intellicheck and MicroSensor technologies.

Cat. No.	Description
6802413	VITROS® 5600 System



VITROS® 4600 Chemistry System

The VITROS® 4600 Chemistry System is Ortho Clinical Diagnostics (OCD) most recent addition to the VITROS® x600 Series of Systems. It offers standardized, high-quality test results using common technologies across OCD's continuum of integrated and stand-alone systems. Beginning with dry slide technology, the VITROS® 4600 System leverages OCD's core technologies that maximize patient result quality and promote ease of use and productivity.

Cat. No.	Description
SP6802445	VITROS® 4600 Chemistry System



VITROS® 3600 Immunodiagnostic System

Designed to help you do more with less, the VITROS® 3600 Immunodiagnostic System provides a world-class immunoassay menu on a high productivity platform. Proven, easy-to-use, self-monitoring VITROS® technologies as well as high-quality, high-reportable results efficiency. Single-use tips for patient samples and reagents address carry-over and cross contamination concerns.

Cat. No.	Description
SP6802783	VITROS® 3600 System



VITROS® ECiQ Immunodiagnostic System

The VITROS® ECiQ System is a simple-to-use, flexible and fully automated laboratory testing system that provides true continuous, STAT and random access capabilities for routine and specialty immunodiagnostic testing. It uses enhanced chemiluminescence detection technology to provide excellent assay performance, including wide dynamic ranges and enhanced precision and sensitivity.

Cat. No.	Description
SP1922814	VITROS® ECiQ system

Polymedco



OC-Auto Sensor Diana Analyzer

OC-Auto Micro 80 or OC-Auto Sensor Diana Analyzers

OC-Auto Reagents are performed using the OC-Auto Micro 80 or OC-Auto Sensor Diana automated systems. OC-Auto Reagents are used for detecting gastrointestinal bleeding associated with disorders such as colorectal cancer, polyps and colitis. High-volume laboratories need to process a lot of samples – FAST. With the fully automated OC-Auto Micro 80 and OC-Auto Sensor Diana fecal occult blood analyzers, staff can process 80 or 280 tests per hour – and never come in contact with the samples themselves.

Cat. No.	Description
OCS80	OC-Auto Micro 80 Analyzer
MV5F00	OC-Auto Sensor Diana Analyzer



PATHFAST® Cardiac Biomarker Analyzer, available from Polymedco

PATHFAST® is an easy-to-use bench-top chemiluminescent immunoassay analyzer that rapidly measures concentrations of critical cardiac markers from a single whole blood sample. Core-lab quality results are available in under 17 minutes, providing quality results quickly and enhancing patient care.

- **Test menu:** Troponin I, NTproBNP, CK-MB, D-Dimer, hsCRP and Myoglobin
- Ability to run whole blood or plasma samples
- Testing and results unaffected by hemolysis†
- Six simultaneous tests in under 17 minutes
- Flexibility to perform any of the assays – from one to six tests per run
- Single test reagent cartridge
- Color touchscreen controls
- Core-lab quality results – 6% CV for Troponin I at 99th percentile cutoff*

*6% CV at the 99th percentile for Troponin I. Source: IFCC Table of analytical characteristics of commercial cardiac Troponin I and T assay declared by the manufacturer – June 2017 (www.ifcc.org)† Up to 1000mg/dL

Cat. No.	Description
300646	PATHFAST® Cardiac Biomarker Analyzer

Siemens Healthineers



Siemens Healthineers epoc® Blood Analysis System

The epoc system is a handheld, wireless solution to enable comprehensive blood analysis testing at the patient's side, on a single room temperature test card with results in less than a minute. The epoc® BGEM test card provides full panel testing on a single test card.

- Customize critical ranges and notify clinicians immediately.
- Provide fast, wireless transmission of patient results.
- System provides full-panel testing and automatic calibration prior to analysis.
- Only 92 µL of blood is required for the full panel of tests.
- Integrated bar-code reader provides easy identification of patient and operator IDs.
- Improve inventory management and reduce waste with one test card with 13 analytes.

Cat. No.	Description
10736387	Epoc® Host2 Motorola
10736398	Reader, included power supply



Siemens Healthineers RAPIDLab 1200 Blood Gas Systems

Designed to meet the challenges of the busy clinical lab and various hospital settings, RAPIDLab® 1200 systems address all your critical-care testing needs:

- Extensive test menu, including full CO-oximetry and neonatal total bilirubin
- Ready Sensor® electrode technology for industry-proven reliability
- Cost-effective, cartridge-based system
- Simplified operation with bio-safe sampling
- Automatic quality control and documentation
- Seamless integration with your LIS/HIS
- Dedicated technical support and on-site service

Cat. No.	Description
SH10321840	RAPIDLab 1240 System
SH10321844	RAPIDLab 1245 System
SH10321846	RAPIDLab 1260 System
SH10321852	RAPIDLab 1265 System



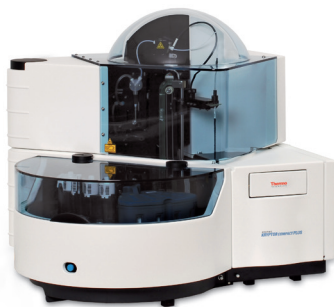
Siemens Healthineers RAPIDPoint 500 Blood Gas System

Designed to meet the challenges of point-of-care settings, the RAPIDPoint® 500 Blood Gas System leverages proven Siemens Healthineers technology to deliver fast, accurate, and comprehensive test results in approximately 60 seconds. This flexible, easy-to-use analyzer helps free clinicians to focus on improved patient care without reliability or maintenance worries.

- Blood gas, electrolytes, glucose, lactate, and full CO-oximetry, including neonatal total bilirubin (nBili) and total hemoglobin (tHb)
- Multiple sample types, including whole blood (arterial and venous) and pleural fluid
- Intuitive touchscreen interface and integrated bar-code reader—just scan, insert, and analyze, with results in approximately 60 seconds
- Bio-safe, hands-free automatic sampling with clot detection and clot management
- Maintenance-free, cartridge-based system that incorporates automatic QC to help ensure quality
- Onboard data security that includes two-step authentication, firewall and endpoint identification to prevent unauthorized external connections, anti-malware, and patient data encryption
- Connectivity to LIS/HIS link with optional remote monitoring and control via the RAPIDComm® Data Management System

Cat. No.	Description
SH10492730	RAPIDPoint 500 Blood Gas System

Thermo Scientific™



B-R-A-H-M-S KRYPTOR compact PLUS*

B-R-A-H-M-S KRYPTOR compact PLUS is a fully automated random-access benchtop immunoanalyzer that uses TRACE technology to determine procalcitonin (PCT) levels and derive uncompromised quality for safe patient management.

- Trusted results with outstanding precision.
- Automated maintenance – for reliable workflow.
- Real-time notification system – for keeping track of the samples and reagents.
- End to end traceability – for reducing error in data entry.
- STAT function – for fast sample analysis during emergency situations.
- User-friendly interface – for ease of use.
- Self-determining dilution factor – for no user intervention.

**only approved for use with B-R-A-H-M-S PCT sensitive KRYPTOR in the US*

Cat. No.	Description
J106172	B-R-A-H-M-S KRYPTOR compact PLUS*



Sysmex® CA-620 and CA-660 Systems

The Sysmex® CA-600 Systems are compact, fully automated systems featuring clotting, chromogenic* and immunologic* measurements in true random-access. Offering the smallest footprint in its class, the systems are ideal for low-volume laboratories or as a backup instrument for large laboratories.

**Offered on Sysmex CA-660 system only.*

Sysmex is a trademark of the Sysmex Corporation

Cat. No.	Description
10712040	Sysmex CA-620 System
10712039	Sysmex CA-660 System



Sysmex® CS-2500 Hemostasis System

Compact yet powerful, the Sysmex® CS-2500 System utilizes innovative smart-design PSI™ technology to maximize efficiency and ensure high-quality first-run results. Designed to reduce costs, optimize workflow, and maximize operating efficiency.

Sysmex is a trademark of the Sysmex Corporation.

PSI is a trademark of Siemens Healthcare Diagnostics Inc.

Cat. No.	Description
11239235	Sysmex CS-2500 System



Sysmex® CS-5100 Hemostasis System

The Sysmex® CS-5100 Hemostasis System is a fully-automated coagulation system for high-volume labs. Smart-design Pre-analytical Sample Integrity or PSI™ technology checks primary tube sample-volumes to identify and automatically manage problematic test samples prior to analysis, minimizing repeat testing.

Sysmex is a trademark of the Sysmex Corporation.

PSI is a trademark of Siemens Healthcare Diagnostics Inc.

Cat. No.	Description
S10709128	Sysmex CS-5100 System



ABX® Micros ES 60 3-part Hematology Analyzer

- 3-part differential
- Micro-sampling: 10 uL whole blood
- 50 tests/hour (CT) - 60 tests/hour (OT)
- Easy to use touch screen software

Cat. No.	Description
5360600241	ABX Micros ES 60 CT 16P INTEGRATED BC/TP



ABX® Micros 60 with LiteDM 3-part Hematology Analyzer

- 3-part differential
- Micro-sampling: 10 uL whole blood
- 55 tests/hour (CT) - 60 tests/hour (OT)
- No compressor (stepper motor technology)

Cat. No.	Description
5300600031	ABX Micros 60 (CT) closed tube 8 parameter; no barcode reader
B3166-1	ABX Micros 60 (CT) closed tube 16 parameter; no barcode reader
B3166-505	ABX Micros 60 (CT) closed tube 16 parameter; with barcode reader
MI621NUA1B	ABX Micros 60 (CT) closed tube 16 parameter; using LiteDM
5300001350	ABX Micros 60 (CT) closed tube 16 parameter; no barcode reader
B3166-91	ABX Micros 60 (OT) open tube 16 parameter; no barcode reader
B3166-504	ABX Micros 60 (OT) open tube 16 parameter; with barcode reader
MI623NUA1B	ABX Micros 60 (OT) open tube 16 parameter; using LiteDM



ABX® Pentra 60 C+ Fully Automated Hematology Analyzer

- 5-part differential
- Micro-sampling: CBC : 30 µL - DIFF: 53 µL
- 60 tests/hour

Cat. No.	Description
B3166-3	ABX Pentra™ 60 C+



ABX® Pentra XL 80

- 5-part differential
- Micro-sampling: CBC : 30 µL - DIFF: 53 µL
- 80 tests/hour

Cat. No.	Description
B3166-265	ABX Pentra™ XL 80



ABX® Pentra XLR 5-part Hematology Analyzer

- 5-part differential
- Micro-sampling: 30 uL whole blood
- 81 tests/hour

Cat. No.	Description
5300800013	ABX Pentra XLR w/ Reticulocytes



ADVIA® 360 Hematology System

As part of the Siemens Healthcare Diagnostics family of scalable hematology analyzers, the ADVIA® 360 Hematology System is designed to meet the specific needs of lower-volume testing environments. It efficiently generates reliable and accurate results and conserves precious benchtop space. With a compact footprint and easy-to-use interface, it offers the right fit for multiple settings—both as a primary analyzer in smaller labs and as a backup in larger labs.

ADVIA is a registered trademark of Siemens Healthcare Diagnostics Inc.

Cat. No.	Description
S11170841	ADVIA 360 Hematology System



ADVIA® 560 and 560AL Hematology Systems

The ADVIA® 560 and 560 AL Hematology Systems offer laboratories fast, high-quality CBC testing. As part of Siemens Healthcare Diagnostics family of scalable hematology analyzers, the systems have been designed with flexible and intuitive options to enable the right fit in your lab. Compact and cost-efficient, the systems can serve as stand-alone or backup analyzers. With an optional autoloader to automate sampling, the ADVIA 560AL System can flexibly adapt to the ever changing laboratory environment.

ADVIA is a registered trademark of Siemens Healthcare Diagnostics Inc.

Cat. No.	Description
S11170842	ADVIA 560 Hematology System
S11170843	Autoloader for ADVIA 560 System



ADVIA® 2120i Hematology System with Optional Autoslide®

Siemens' high-volume hematology analyzer, the ADVIA® 2120i Hematology System with Autoslide* streamlines workflow by eliminating the majority of manual steps commonly performed to maximize productivity. It delivers the gold-standard in testing methodology for optimum results while offering the simplicity and flexibility you need for easy integration into your lab.

**Autoslide optional*

ADVIA is a registered trademark of Siemens Healthcare Diagnostics Inc.

Cat. No.	Description
S10285572	ADVIA 2120i without Autosampler
S10488923	ADVIA 2120i with Autosampler Single
S10285573	ADVIA 2120i with Autosampler Dual
S10282177	Autoslide for ADVIA 2120i



Hematek® 3000 System

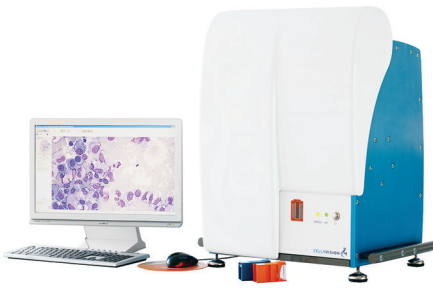
Complementing the Siemens family of hematology analyzers, the Hematek® 3000 System provides semi-automated slide staining for laboratories that need a robust system capable of staining up to 60 slides per hour. Built on a heritage of slide staining spanning more than half a century, the system helps maximize productivity and deliver quality results through user-defined features and precision controls.

ADVIA is a registered trademark of Siemens Healthcare Diagnostics Inc.

Cat. No.	Description
10805311	Hematek 3000 System

Hematology

Siemens Healthineers



CellaVision® DM1200 Digital Cell Morphology System

The CellaVision® DM1200 Digital Cell Morphology System is designed to automate the time-consuming, manual effort associated with traditional microscopy. The system leverages proven digital image analysis technology to locate and examine cells in blood and other body fluids, saving time, accelerating turnaround, and increasing technologists' productivity throughout mid-volume labs. In addition, the CellaVision DM1200 Digital Cell Morphology System easily adapts to any hematology workflow within hospital IT environments.

CellaVision is a trademark of CellaVision AB.

Cat. No.	Description
S10715755	CellaVision DM1200



CellaVision® DM9600 Digital Cell Morphology System

The CellaVision® DM9600 Digital Cell Morphology System is designed to automate the time-consuming, manual effort associated with traditional microscopy. The system leverages proven digital image analysis technology to locate and examine cells in blood and other body fluids, saving time, accelerating turnaround, and increasing technologists' productivity throughout high-volume labs. In addition, the CellaVision DM9600 Digital Cell Morphology System easily adapts to any hematology workflow within hospital IT environments.

CellaVision is a trademark of CellaVision AB.

Cat. No.	Description
S10726171	CellaVision DM9600

Microbiology

Cardinal Health



Single Slide Automated Gram Stainer

The Single Slide Automated Gram Stainer is fast and simple to use. Small enough to fit any lab counter top. The unit is totally hands-free. Each slide is automatically stained, decolorized and counter-stained in about 3.5 minutes. No daily cleaning since the instrument automatically cleans in-process. Periodic cleaning and maintenance is programmed with software notifications. The Gram Stainer has a patented decolorization process that optically monitors the crystal violet run-off at a rate of 20 times per second which means a perfectly decolorized slide every time.

Cat. No.	Description
CHB-AGS	Single Slide Automated Gram Stainer



BD BACTEC™ FX Instrumented Blood Culture System

The BD BACTEC FX™ blood culture instruments allow for simple, rapid workflow within multiple sites of the healthcare system. Vial activated workflow helps reduce the amount of time needed to operate the instrument and may reduce user errors. A touch screen user interface and on-board barcode scanner allow for flexible, easy loading of samples and access to sample information by all levels of users. The small footprint of the instrument improves the utilization of valuable, limited laboratory space. Multiple instruments can be integrated into a larger system, offering flexibility to the lab.

Cat. No.	Description
B5063-3	BD BACTEC™ FX Top Unit - 200 vial capacity
B5063-4	BD BACTEC™ FX Bottom Unit - 200 vial capacity



BD™ Bruker MALDI Biotyper™ Sirius and Sirius One

The BD Bruker MALDI Biotyper Sirius and Sirius One instruments are now available. As the latest additions to the Bruker MALDI offering, these systems provide improved throughput, a reduced footprint, and an updated notification system with the accurate identification performance you expect. The BD Bruker MALDI Biotyper Sirius and Sirius One are bench top models to optimize your space and both systems have over 400 organisms available in their FDA-approved library. With identification in minutes and batch or random-access testing, these instruments are designed to meet your workflow needs. Both instruments connect to the BD Phoenix™ M50 System and the BD BACTEC FX Blood Culture System via BD informatics to provide you an integrated microbiology solution.

Cat. No.	Description
1890133	BD Bruker MALDI Biotyper Sirius system
1890233	BD Bruker MALDI Biotyper Sirius One system



BD MAX™ System

The BD MAX™ System is a fully-integrated, automated platform that performs nucleic acid extraction and real-time PCR providing results for up to 24 patient samples across multiple syndromes in approximately 3 hours. BD offers a suite of clinically relevant, differentiated in vitro diagnostic assays in the areas of women's health and sexually-transmitted infections, enteric infections, and healthcare-associated infections. The current menu aids institutions and clinicians in addressing a wide range of complex patient cases, while the innovative pipeline plans to bring forth future assays to continue to provide comprehensive testing solutions globally. Expand your laboratory's molecular solutions with the BD MAX™ System to help your clinicians set their patients on the right clinical path.

Cat. No.	Description
441916	BD MAX™ System - BD MAX™ Instrument



BD Phoenix™ M50 Automated Identification and Susceptibility Testing System

The BD Phoenix M50 instrument provides accurate and timely identification and susceptibility results to guide appropriate therapy and patient management decisions. The system can hold up to 50 panels at a time and can be stacked to maximize limited laboratory space. AST Panels have up to 29 antibiotics on a single panel to reduce off line testing and provide a true MIC value based on current CLSI breakpoint standards.

Cat. No.	Description
448010	BD Phoenix AP
443624	BD Phoenix M50 - 50 Panel Capacity

Microbiology

Thermo Fisher Scientific



Sensititre™ System

The Sensititre System utilizes true MIC results, versus extrapolated MIC results, for better informed therapeutic choices – crucial in the fight against antimicrobial resistance. The system offers flexible, customizable testing options to accommodate laboratories of all sizes. Reduce cost per test by eliminating offline tests and time-consuming dilutions with plates that include the latest antimicrobials and last-resort therapies. Automated and manual read options offer ultimate flexibility.

Cat. No.	Description
V4000	Sensititre™ ARIS™ HiQ™ – automated incubation and reading
V3020R	Sensititre™ AIM™ – automated inoculation
RV3030	Sensititre™ OptiRead™ System – automated fluorescence reading
RV2021	Sensititre™ Vizion™ System – digital imaging
V4007R	Sensititre™ Manual Viewbox
YV3011	Sensititre™ Nephelometer

Quidel



Solana® Molecular Testing Platform and Assay Kits

Solana, a simplified molecular testing platform, combines Quidel's proprietary Helicase-Dependent Amplification (HDA) with fluorescence detection to deliver results you can trust, in an actionable time frame. Solana provides critical diagnostic information for the following disease states: Bordetella Complete, *C. difficile*, HSV 1+2/VZV, Influenza A+B, RSV + hMPV, GAS, Strep Complete, GBS and Trichomonas.

Cat. No.	Description
M900QA	Solana® purchased instrument startup kit (includes 1 purchased Solana Instrument, 95°C Lysis heat block, printer, labels, tray, 3 racks and stylus)

Molecular Microbiology/Point-of-Care

Abbott



ID NOW™

ID NOW™ is a rapid, instrument-based, molecular amplification system for the qualitative detection of infectious diseases. Our isothermal nucleic acid amplification technology provides molecular results in just minutes. The ID NOW™ test menu includes: COVID-19, Influenza A & B, RSV and Strep A.

Cat. No.	Description
NAT-024	ID NOW™ Instrument

Meridian Bioscience



revogene®

Optimizing the diagnostic process - from sample to result in 3 easy steps

- Fully automated, standalone system
- 2 minutes hands-on time
- Up to 8 samples in one run of ~70 minutes
- Real-time PCR technology
- Up to 12 genetic targets can be detected per sample
- CLIA, moderate complexity
- Available assays: GBS LB and *C. difficile*
- Coming soon assays: Strep A and Carba

Cat. No.	Description
G130840	revogene Analyzer



Agilent Ultivo Triple Quadrupole LC/MS System, available from MedTest Dx

Ultivo presents a transformative approach to LC/TQ and is the newest member of the Agilent Triple Quadrupole family. At the core of Ultivo lie our Triad Technologies (Tt) - Vortex Collision Cell, Cyclone Ion Guide, and VacShield. These innovations afford technicians the sensitivity, robustness, reliability, and performance required for the day-in, day-out challenges of high-throughput sample analysis in the applied markets. "Quant-My-Way" software has been streamlined to emulate your targeted workflows, and system diagnostics alert you in a straightforward manner to items requiring attention. Ultivo is Agilent's first stackable LC/TQ that eliminates the MS footprint by incorporating the MS into the LC stack. Ultivo lies at the juxtaposition of "unbelievably powerful and remarkably small." Coupled with proprietary methods, installation, and ready-to-use LC/MS panel kits from MedTest Dx, the Agilent 6460 enables Toxicology confirmation testing.

Cat. No.	Description
G6465BA	Agilent Ultivo Triple Quadrupole LC-MS System



Agilent 6460 Triple Quadrupole LC/MS System, available from MedTest Dx

The Agilent 6460 Triple Quadrupole LC/MS System is equipped with Agilent Jet Stream Technology to enable enhanced sensitivity. The 6460 provides a fast and robust solution to simultaneously quantify, screen, and confirm analytes in the laboratory. Coupled with proprietary methods, installation, and ready-to-use LC/MS panel kits from MedTest Dx, the Agilent 6460 enables Toxicology confirmation testing.

Cat. No.	Description
G6460CA	Agilent 6460 Triple Quadrupole LC/MS System



BA-800M Automated Clinical Analyzer

The MedTest DX BA-800M Automated Clinical Analyzer is a versatile, high-volume platform that is capable of performing up to 1200 tests/hr. with ISE. It is equipped with a built-in Sample Delivery Module (SDM) that automatically delivers samples to the analytical unit by means of color-coded sample racks. The system can run Drugs of Abuse (DoA) screening reagents, general chemistries and ISE's. This innovative analyzer can hold up to 440 sample positions and is equipped with intuitive software, making it the ideal solution for decentralized laboratories, toxicology laboratories, reference laboratories and hospitals.

Cat. No.	Description
BA800MISE	BA-800M Automated Clinical Analyzer



BS-480 Automated Clinical Analyzer

The MedTest DX BS-480 Automated Clinical Analyzer is a fully automated, standalone floor model analyzer that is capable of performing up to 560 tests/hr. with ISE. It offers many high-end features usually only found in large integrated systems. For example, the analyzer is equipped with probe collision protection and auto-recovery functions, eliminating operator worry when walking away. The system can run Drugs of Abuse (DoA) screening reagents, general chemistries and ISE's. This innovative analyzer can hold up to 90 sample positions and is equipped with intuitive software, making it the ideal solution for Physician Owned Laboratories (POL), decentralized laboratories, toxicology laboratories, drug courts, reference laboratories and small hospitals.

Cat. No.	Description
BS480ISE	BS-480 Automated Clinical Analyzer



BS-200 Automated Clinical Analyzer

The MedTest DX BS-200 Automated Clinical Analyzer is a fully automated, benchtop analyzer that is capable of performing up to 330 tests/hr. with ISE. It includes features such as independent mixing for optimal homogenization along with liquid detection, collision protection and probe cleaning to ensure the samples are kept safe. The system can run Drugs of Abuse (DoA) screening reagents, general chemistries and ISE's. This innovative analyzer can hold up to 40 sample positions and is equipped with intuitive software, making it the ideal solution for Physician Owned Laboratories (POL), small decentralized laboratories, toxicology laboratories and drug courts.

Cat. No.	Description
BS200ISE	BS-200 Automated Clinical Analyzer



AUTION ELEVEN™ AE-4022 Urine Analyzer

The AUTION ELEVEN™ AE-4022 Semi-Automated Urine Chemistry Analyzer is ideal as a standalone analyzer in medium to high volume facilities, as well as a back-up solution for fully automated urine analyzers. The high throughput meets workload demands, the compact footprint saves benchtop space, and the AUTION strip technology provides standardization throughout the healthcare network.

Cat. No.	Description
ARK102974	AUTION ELEVEN AE-4022 Urinalysis Analyzer



AUTION MAX™ AX-4030 Urine Analyzer

The AUTION MAX™ AX-4030 fully automated urine chemistry analyzer unites the AUTION urine chemistry test strips with reliable design to deliver quality results and efficiently meet laboratory workload demands.

Cat. No.	Description
ARK14505	Aution Max AX-4030 Urinalysis Analyzer



Cost savings through
equipment rental
programs avoid a
large capital expense

Capital lease options that work for you

**Take advantage of our flexible leasing programs.
Whatever your instrument needs, we have a
solution for you.**

Easy contracting

Instruments and extended warranty/service coverage are covered under one agreement and one payment made to Cardinal Health. This eliminates the need to set up additional vendors and helps reduce the amount of work for your accounts payable staff. Whatever the case may be, our competitive pricing and rental rates help keep your equipment acquisition affordable.

Reagent rental and leases

The cost of your instrument, reagents and extended warranty/service coverage are combined into your reagent price. This option allows you to rent needed equipment and avoid a large capital expense.

To structure leasing solutions right for your lab, please contact your Cardinal Health sales representative.

To order, call: 800.964.5227



We are your lab partner.

Expertise. Choice. Efficiency. Savings.

For more information or to order,

contact your Cardinal Health sales representative or
call **800.964.5227** or visit **cardinalhealth.com**.

[cardinalhealth.com](https://www.cardinalhealth.com)