



Odd size doors **faster!**



**LEED** ready

Check out the **revolutionary**  
**CTA Access Door** on page 4



# TABLE OF CONTENTS

**CENDREX AT A GLANCE** ..... 3

**GENERAL PURPOSE ACCESS DOORS**

**CTA** – ADJUSTABLE GENERAL PURPOSE ACCESS DOOR ..... 4

**CTR** – DOOR WITH HIDDEN FLANGE FOR ALL SURFACE TYPES... 4

**AHD** – GENERAL PURPOSE DOOR FOR ALL SURFACE TYPES  
– **AHD-GYP** ..... 5

**FIRE RATED ACCESS DOORS**

**PFI** – FIRE RATED INSULATED DOOR FOR ALL SURFACE TYPES  
– **PFI-GYP** ..... 6

**PFU** – FIRE RATED INSULATED UPWARD OPENING DOOR  
FOR CEILINGS ONLY ..... 7

**PFN** – FIRE RATED UNINSULATED DOOR FOR WALLS ONLY  
– **PFN-GYP** ..... 7

**RECESSED ACCESS DOORS**

**AHA** – RECESSED DOOR WITHOUT FLANGE  
– **AHA-GYP** ..... 8

**SPECIALTY ACCESS DOORS**

**SFM** – SURFACE MOUNTED DOOR ..... 8

**RPL** – REMOVABLE PLASTIC DOOR ..... 8

**LHD** – HEAVY DUTY DOOR FOR LARGE OPENINGS  
– **LHD-GYP / LHD-180** ..... 9

**PAL** – INSULATED ALUMINUM DOOR FOR ALL SURFACE TYPES .. 9

**DRD** – DRAFT STOP DOOR FOR ATTIC APPLICATION ..... 9

**GRG** – GLASS FIBER REINFORCED GYPSUM ACCESS PANEL..... 9

**SECURITY ACCESS DOORS**

**MDS** – MEDIUM SECURITY DOOR FOR ALL SURFACE TYPES... 10

**PHS** – HIGH SECURITY DOOR FOR ALL SURFACE TYPES..... 10

**CABINETS / VALVE BOXES**

**BTA** – CABINET / VALVE BOX WITH HIDDEN FLANGE ..... 10

**BTV** – CABINET / VALVE BOX WITH WINDOW  
AND HIDDEN FLANGE ..... 10

**ROOF HATCHES**

**TRH** – ROOF HATCHES AND ACCESSORIES..... 11

**FLOOR HATCHES (FLOOR ACCESS DOORS)**

**PPA** – FLUSH ALUMINUM FLOOR HATCHES ..... 11  
– **PPA-RE** ..... 11

**OPTIONS AND ACCESSORIES** ..... 12-13

**ODD SIZE DOORS**  
Non-standard size access doors manufactured in 5 business days ..... 14

**CUSTOM DOORS**  
Custom doors manufactured in 10 business days ..... 14

**TERMS AND CONDITIONS**..... 15

**THE CENDREX ADVANTAGE,  
CONTACTS AND WAREHOUSES**..... 16

## ORDER GUIDE

Please submit your orders to: [orders@cendrex.com](mailto:orders@cendrex.com)

If you have any questions, do not hesitate to communicate with our highly qualified personnel in order to create unique solutions for your projects. We will be glad to answer all of your questions.

Tel.: 1 800 479-1489

Fax: 1 800 297-1489

[info@cendrex.com](mailto:info@cendrex.com)

PRODUCT CODE	OPTIONAL MATERIAL	WIDTH X HEIGHT	OPTIONS
<b>AHD-GYP</b>	<b>SS</b>	<b>12 X 12</b>	<b>10</b>
GENERAL PURPOSE DOOR WITH DRYWALL FLANGE	STAINLESS STEEL	DIMENSION (INCHES)	KEY OPERATED CYLINDER CAM LATCH

As shown on your purchase order (PO) Example: **AHD-GYP-SS-12x12-10**

### REMEMBER TO:

- Provide the CENDREX quotation numbers (VS #) when ordering: odd size doors, custom doors, project type quotes.
- For job site delivery orders provide: delivery address, contact name(s), telephone number(s)

Please refer to the DISTRIBUTORS section of the CENDREX website for complete order information.

**CTA : Revolutionary, adjustable, general purpose access door** - See page 4.

REDUCE installation time by 90% - ADJUSTABLE in size - AESTHETIC APPEARANCE

**CTR: Contour Hidden Flange Access Door** CENDREX has engineered the unique and exclusive CTR Contour Hidden Flange Door. Easy installation, no mudding, taping or apparent flange, make the CTR the most aesthetically pleasing access door available on the market. See page 4.



**ODD SIZE DOORS in 5 days** Get your odd size access doors manufactured in 5 business days. CENDREX is the industry's leader in the fabrication of odd sizes.

**CUSTOM DOORS in 10 days** Get your custom access doors manufactured in 10 business days. Shop drawings are provided for all custom doors.

**LOCAL representatives** CENDREX has local representatives throughout North America and beyond.

**LOCAL distributors/partners** CENDREX sells exclusively through its distribution network.

**REGIONAL warehouses** Located in California, Colorado, Florida, Illinois, Pennsylvania, Texas and Canada.

**LEED ready** CENDREX access products contribute directly to obtaining points for LEED® certification. All LEED® documents are developed in association with the foremost LEED® certification specialists, YRG in the U.S.A. and Vertima in Canada, to provide you with information you can trust.

**GREEN beyond LEED®** CENDREX is incorporating sustainability strategies at all levels through an on-going commitment to reduce waste and increase efficiency.



►NEW PRODUCT◀

## CTA ADJUSTABLE GENERAL PURPOSE ACCESS DOOR

FOR ALL SURFACE TYPES

- Door panel: 20 gauge cold rolled steel
- Frame: 24 gauge galvanized steel frame with notched knock-over tabs
- Corners: polymer
- Lock / latch: 4 magnets, 1 on each corner
- Ready to install

REDUCE  
installation time by 90%

ADJUSTABLE dimensions

AESTHETIC APPEARANCE

PATENT PENDING

Always install the security cables



**LEED** ready: This product contributes to LEED credits.

PRODUCT	For openings - W" x H"	Weight	Preferred Price*	Regular Price
CTA 6 x 7.5	6 x 6 up to 7.5 x 7.5	2.5 lbs	\$22.70	\$26.20
CTA 8 x 9.5	8 x 8 up to 9.5 x 9.5	2.75 lbs	\$25.60	\$29.50
CTA 10 x 11.5	10 x 10 up to 11.5 x 11.5	3.25 lbs	\$27.40	\$31.60
CTA 12 x 13.5	12 x 12 up to 13.5 x 13.5	3.75 lbs	\$31.60	\$36.40
CTA 14 x 15.5	14 x 14 up to 15.5 x 15.5	4.25 lbs	\$36.40	\$41.90

Over 15.5" x 15.5" use the CTR access door

\*Preferred price: see page 15

### Lock option



### CTA-35

Screwdriver operated cam latch  
Price: add \$3.20 per door  
All CTA and CTA-35 in stock



►EXCLUSIVE◀

## CTR "Contour" DOOR WITH HIDDEN FLANGE

FOR ALL SURFACE TYPES

- 16 gauge cold rolled steel
- Concealed frame
- Concealed hinge
- S.S. = Stainless Steel
- Gasketing option available
- Also available with key operated cylinder cam latch
- All CTRs are for wall and ceiling applications
- Weights are for regular CTR, not for stainless steel

A LABOR SAVING  
alternative to doors  
with DRYWALL FLANGES

"No need to mud or plaster"

**LEED** ready: This product contributes to LEED credits.

Product	W" x H"	Locks	Weight	Price	Price S.S.
CTR	8 1/4 x 8 1/4	1	3 lbs	\$26.40	\$79.80
CTR	8 1/4 x 12	1	4 lbs	\$31.70	\$91.90
CTR	10 x 10	1	4 lbs	\$31.20	\$91.10
CTR	12 x 12	1	6 lbs	\$30.50	\$103.60
CTR	12 x 18	1	8 lbs	\$41.70	\$127.00
CTR	14 x 14	1	7 lbs	\$38.30	\$133.50
CTR	16 x 16	1	9 lbs	\$41.30	\$154.90
CTR	18 x 18	3	10 lbs	\$44.90	\$191.90
CTR	18 x 24	4	13 lbs	\$65.30	\$218.50
CTR	20 x 20	3	13 lbs	\$71.90	\$219.50
CTR	22 x 22	3	15 lbs	\$76.20	\$260.70
CTR	22 x 30	4	17 lbs	\$101.60	\$299.40
CTR	22 x 36	4	19 lbs	\$115.20	\$326.20
CTR	24 x 24	4	17 lbs	\$66.50	\$257.10
CTR	24 x 30	4	19 lbs	\$111.40	\$315.20
CTR	24 x 36	4	24 lbs	\$126.20	\$365.50

### Option: removable panel

### RMD ACCESS DOOR

Removable access door with hidden flange is ideal for confined spaces where access is limited or where a pivoting door panel cannot be used due to an obstruction.

> Call us for dimensions and pricing

Shaded cells represent stock items.

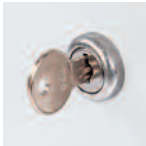
Other dimensions are available.  
Call us for details and pricing.



## AHD GENERAL PURPOSE DOOR

FOR ALL SURFACE TYPES

- 16 gauge cold rolled steel
- Pin hinge
- Piano hinge over 24" (height or width)
- S.S. = Stainless Steel
- Gasketing option available
- All AHDs are for wall and ceiling applications
- Weights are for regular AHD, not for stainless steel



**Also in stock: AHD 12 x 12 -10,  
16 x 16 -10, 18 x 18 -10, 24 x 24 -10**  
(AHD door with key operated cylinder cam latch)

**LEED** ready: This product contributes to LEED credits.

Product	W" x H"	Locks	Weight	Price	Price S.S.
AHD	6 x 6	1	2 lbs	\$23.40	\$66.70
AHD	8 x 8	1	3 lbs	\$24.40	\$72.60
AHD	8 x 12	1	4 lbs	\$28.60	\$84.70
AHD	10 x 10	1	4 lbs	\$28.90	\$84.00
AHD	12 x 12	1	5 lbs	\$27.80	\$95.70
AHD	12 x 16	1	6 lbs	\$39.20	\$109.20
AHD	12 x 18	1	7 lbs	\$38.60	\$115.20
AHD	12 x 24	1	8 lbs	\$44.30	\$138.00
AHD	14 x 14	1	7 lbs	\$35.50	\$121.50
AHD	16 x 16	1	8 lbs	\$38.20	\$140.50
AHD	18 x 18	1	9 lbs	\$41.70	\$176.30
AHD	18 x 24	1	13 lbs	\$60.50	\$199.60
AHD	20 x 20	1	11 lbs	\$64.70	\$200.10
AHD	22 x 22	1	13 lbs	\$68.70	\$240.70
AHD	22 x 30	2	17 lbs	\$94.10	\$275.60
AHD	22 x 36	2	19 lbs	\$106.60	\$300.50
AHD	24 x 24	1	15 lbs	\$61.50	\$231.90
AHD	24 x 30	2	20 lbs	\$103.10	\$290.30
AHD	24 x 36	2	22 lbs	\$111.40	\$332.50
AHD	24 x 48	2	28 lbs	\$159.00	\$407.30
AHD	30 x 30	4	23 lbs	\$133.10	\$340.10
AHD	36 x 36	4	31 lbs	\$147.70	\$460.40

The LHD model is recommended for doors over 1296 sq. inches - See page 9



## AHD-GYP GENERAL PURPOSE DOOR

WITH DRYWALL FLANGE

- Drywall corner bead
- Also available in stainless steel

**LEED** ready: This product contributes to LEED credits.

Product	W" x H"	Locks	Weight	Price
AHD-GYP	8 x 8	1	3 lbs	\$34.00
AHD-GYP	10 x 10	1	4 lbs	\$37.70
AHD-GYP	12 x 12	1	5 lbs	\$39.30
AHD-GYP	14 x 14	1	7 lbs	\$45.00
AHD-GYP	16 x 16	1	9 lbs	\$50.30
AHD-GYP	18 x 18	1	10 lbs	\$54.90
AHD-GYP	22 x 22	1	13 lbs	\$71.90
AHD-GYP	24 x 24	1	15 lbs	\$82.50
AHD-GYP	24 x 36	2	22 lbs	\$131.60

**Your odd sizes:  
Made in 5 days**

Other dimensions are available.  
Call us for details and pricing.

Shaded cells represent stock items.



## PFI FIRE RATED INSULATED DOOR

FOR ALL SURFACE TYPES

- Insulated
- For walls and ceilings
- WALL FIRE RATINGS:  
1 ½ HOURS B LABEL (for 2 hour rated walls)  
AND RATING OF 3 HOURS
- CEILING FIRE RATING: 3 HOURS for non-combustible  
assembly and 1 HOUR for combustible assembly
- Also available in stainless steel
- For high security PFI-HS:  
optional 14 gauge cold rolled steel frame  
and 16 gauge galvanized steel door

**LEED** ready: This product contributes to LEED credits.

Authorities Having Jurisdiction (AHJ) should be consulted in all cases as to the particular requirements covering the installation and use of fire rated access doors.

Product	W" x H"	Locks	Weight	Price
PFI	8 x 8	1	7 lbs	\$112.80
PFI	10 x 10	1	8 lbs	\$120.20
PFI	12 x 12	1	10 lbs	\$118.80
PFI	14 x 14	1	12 lbs	\$133.60
PFI	16 x 16	1	14 lbs	\$145.50
PFI	18 x 18	1	17 lbs	\$154.80
PFI	22 x 22	1	20 lbs	\$174.80
PFI	22 x 30	1	30 lbs	\$203.70
PFI	22 x 36	2	34 lbs	\$259.60
PFI	24 x 24	1	28 lbs	\$195.80
PFI	24 x 36	2	36 lbs	\$276.80
PFI*	24 x 48	2	48 lbs	\$355.10
PFI*	30 x 30	1	40 lbs	\$275.70
PFI*	32 x 32	2	43 lbs	\$281.50
PFI*	36 x 36	2	50 lbs	\$397.00
PFI*	48 x 48	2	83 lbs	\$691.90

\*For ceiling rating: max. 24" x 36" or 864 sq. in.



## PFI-GYP FIRE RATED INSULATED DOOR

WITH DRYWALL FLANGE

- Insulated
- FIRE RATING: 1 ½ HOURS B LABEL  
(for 2 hour rated walls)
- Also available in stainless steel

**LEED** ready: This product contributes to LEED credits.

Product	W" x H"	Locks	Weight	Price
PFI-GYP	8 x 8	1	7 lbs	\$129.40
PFI-GYP	12 x 12	1	10 lbs	\$134.70
PFI-GYP	16 x 16	1	14 lbs	\$166.20
PFI-GYP	18 x 18	1	17 lbs	\$176.30
PFI-GYP	22 x 22	1	24 lbs	\$200.10
PFI-GYP	22 x 30	1	31 lbs	\$233.50
PFI-GYP	22 x 36	2	38 lbs	\$297.50
PFI-GYP	24 x 24	1	29 lbs	\$219.80
PFI-GYP	24 x 36	2	36 lbs	\$317.80
PFI-GYP*	32 x 32	2	44 lbs	\$348.10
PFI-GYP*	36 x 36	2	53 lbs	\$462.30

\*For ceiling rating: max. 24" x 36" or 864 sq. in.

Shaded cells represent stock items.

Other dimensions are available.  
Call us for details and pricing.

**Your odd sizes:  
Made in 5 days**

# FIRE RATED ACCESS DOORS

# U.S.A. PRICE LIST



## PFU FIRE RATED INSULATED UPWARD OPENING DOOR FOR CEILINGS ONLY

- Upward opening
- Insulated
- FIRE RATING: 3 HOURS for non-combustible assembly and 1 HOUR for combustible assembly
- Also available in stainless steel

Product	W" x H"	Locks	Weight	Price
PFU	22 x 30	1	30 lbs	\$287.70
PFU	22 x 36	2	37 lbs	\$366.60
PFU	24 x 24	1	29 lbs	\$271.20

Other sizes available upon request

Maximum door size: 24" x 36" or 864 sq. inches

**LEED** ready: This product contributes to LEED credits.

Authorities Having Jurisdiction (AHJ) should be consulted in all cases as to the particular requirements covering the installation and use of fire rated access doors.



## PFN FIRE RATED UNINSULATED DOOR FOR WALLS ONLY

- Uninsulated
- FIRE RATING: 1½ HOURS B LABEL (for 2 hour rated walls)
- For walls only
- Also available in stainless steel

Product	W" x H"	Locks	Weight	Price
PFN	8 x 8	1	5 lbs	\$102.40
PFN	10 x 10	1	7 lbs	\$106.30
PFN	12 x 12	1	8 lbs	\$105.80
PFN	14 x 14	1	10 lbs	\$119.80
PFN	16 x 16	1	12 lbs	\$133.80
PFN	18 x 18	1	14 lbs	\$143.40
PFN	22 x 22	1	18 lbs	\$166.70
PFN	22 x 30	1	22 lbs	\$193.00
PFN	22 x 36	2	28 lbs	\$227.60
PFN	24 x 24	1	22 lbs	\$177.70
PFN	24 x 36	2	29 lbs	\$240.30
PFN	30 x 30	1	30 lbs	\$244.90
PFN	32 x 32	2	33 lbs	\$271.10
PFN	36 x 36	2	39 lbs	\$348.10

**LEED** ready: This product contributes to LEED credits.

Authorities Having Jurisdiction (AHJ) should be consulted in all cases as to the particular requirements covering the installation and use of fire rated access doors.

Maximum door size of: 36" x 36" or 1296 sq. inches



## PFN-GYP FIRE RATED UNINSULATED DOOR WITH DRYWALL FLANGE

- Uninsulated
- FIRE RATING: 1½ HOURS B LABEL (for 2 hour rated walls)
- For walls only
- Also available in stainless steel

Product	W" x H"	Locks	Weight	Price
PFN-GYP	8 x 8	1	5 lbs	\$112.40
PFN-GYP	12 x 12	1	7 lbs	\$120.90
PFN-GYP	16 x 16	1	12 lbs	\$153.10
PFN-GYP	18 x 18	1	14 lbs	\$164.20
PFN-GYP	22 x 22	1	18 lbs	\$176.60
PFN-GYP	22 x 30	1	22 lbs	\$205.40
PFN-GYP	22 x 36	2	28 lbs	\$260.60
PFN-GYP	24 x 24	1	22 lbs	\$203.20
PFN-GYP	24 x 36	2	29 lbs	\$275.20
PFN-GYP	32 x 32	2	33 lbs	\$282.30
PFN-GYP	36 x 36	2	39 lbs	\$362.10

**LEED** ready: This product contributes to LEED credits.

Maximum door size of: 36" x 36" or 1296 sq. inches

Your odd sizes:  
Made in 5 days

Other dimensions are available.  
Call us for details and pricing.

Shaded cells represent stock items.

# RECESSED ACCESS DOORS

# U.S.A. PRICE LIST



## AHA RECESSED DOOR WITHOUT FLANGE

- 16 gauge cold rolled steel
- 5/8" standard recess
- Optional recesses also available:  
1/2" to 3/4" (standard 2" frame)  
13/16" to 1 1/2" (special 3" frame)
- Also available in stainless steel

Product	W" x H"	Locks	Weight	Price
AHA	8 x 8	1	3 lbs	\$47.60
AHA	12 x 12	1	5 lbs	\$55.80
AHA	16 x 16	1	9 lbs	\$72.80
AHA	18 x 18	1	11 lbs	\$87.00
AHA	24 x 24	1	16 lbs	\$114.10

**LEED** ready: This product contributes to LEED credits.



## AHA-GYP RECESSED DOOR WITH DRYWALL FLANGE

- Drywall corner bead
- 5/8" standard recess
- Optional recesses also available:  
1/2" to 3/4" (standard 2" frame)  
13/16" to 1 1/2" (special 3" frame)

Product	W" x H"	Locks	Weight	Price
AHA-GYP	8 x 8	1	3 lbs	\$62.00
AHA-GYP	12 x 12	1	5 lbs	\$66.80
AHA-GYP	16 x 16	1	9 lbs	\$88.70
AHA-GYP	18 x 18	1	11 lbs	\$96.90
AHA-GYP	24 x 24	1	16 lbs	\$126.50

- Also available in stainless steel

**LEED** ready: This product contributes to LEED credits.

# SPECIALTY ACCESS DOORS



## SFM SURFACE MOUNTED DOOR

- 16 gauge cold rolled steel
- Also available in stainless steel
- > Call us for dimensions and pricing

Product	W" x H"	Locks	Weight	Price
SFM	8 x 8	1	3 lbs	\$69.00
SFM	12 x 12	1	5 lbs	\$90.40
SFM	16 x 16	1	8 lbs	\$92.60
SFM	18 x 18	1	10 lbs	\$118.50
SFM	24 x 24	1	15 lbs	\$127.20

**LEED** ready: This product contributes to LEED credits.



## RPL REMOVABLE PLASTIC DOOR

- Easy to install
- High impact ABS plastic
- Standard sizes only

Product	Code	Door size	Wall opening	Frame size to	Weight	Price
RPL	6 x 9	6 x 9	6 3/8 x 9 3/8	8 1/4 x 11 1/4	0.5 lbs	\$21.80
RPL	8 x 8	8 x 8	8 3/8 x 8 3/8	10 1/4 x 10 1/4	0.5 lbs	\$24.00
RPL	14 x 14	13 3/4 x 13 3/4	14 x 14	17 x 17	1.95 lbs	\$32.70
RPL	14 x 29	13 3/4 x 29	14 x 29 1/2	17 x 32 1/4	4.55 lbs	\$82.70

No other sizes available for this product.

In stock at the Montreal warehouse.

Shaded cells represent stock items.

Other dimensions are available.  
Call us for details and pricing.

**Your odd sizes:  
Made in 5 days**





**LHD**  
**HEAVY DUTY DOOR**  
 FOR LARGE OPENINGS  
 - 16 gauge cold rolled steel  
 - Also available in stainless steel  
 > Call us for dimensions and pricing

**Any size made  
 in record time**



**LHD-180**  
**HEAVY DUTY DOOR  
 WITH DOUBLE LEAF**  
 FOR LARGE OPENINGS  
 - Also available in stainless steel  
 > Call us for dimensions  
 and pricing



**LHD-GYP**  
**HEAVY DUTY DOOR**  
 FOR LARGE OPENINGS WITH DRYWALL FLANGE  
 - Also available in stainless steel  
 > Call us for dimensions and pricing

**LEED** ready: These products contribute to LEED credits.



**PAL**  
**INSULATED ALUMINIUM DOOR**  
 FOR ALL SURFACE TYPES  
 - 0.064" aluminum  
 - Neoprene gasket all around perimeter  
 - 1" fiberglass wool Insulation  
 - Cylinder lock and key  
 - Also available in stainless steel

**LEED** ready: This product contributes to LEED credits.

Product	W" x H"	Locks	Weight	Price
PAL	8 x 8	1	2 lbs	\$84.50
PAL	12 x 12	1	3 lbs	\$102.40
PAL	16 x 16	1	6 lbs	\$122.20
PAL	18 x 18	1	7 lbs	\$130.90
PAL	24 x 24	1	13 lbs	\$171.80
PAL	24 x 36	2	17 lbs	\$288.70
PAL	36 x 36	2	21 lbs	\$323.30



**DRD**  
**DRAFT STOP DOOR**  
 FOR ATTIC APPLICATION  
 - 16 gauge cold rolled steel  
 - Also available in stainless steel  
 > Call us for dimensions and pricing

**LEED** ready: This product contributes to LEED credits.



**GRG**  
**GLASS FIBER  
 REINFORCED  
 GYPSUM  
 ACCESS PANEL**  
 > Call us for dimensions  
 and pricing

**Your odd sizes:  
 Made in 5 days**

Other dimensions are available.  
 Call us for details and pricing.

Tel.: 1 800 479-1489 Fax: 1 800 297-1489

# SECURITY ACCESS DOORS

# U.S.A. PRICE LIST



## MDS MEDIUM SECURITY DOOR

FOR ALL SURFACE TYPES

- 14 gauge galvanized steel
- Key operated cylinder cam latch
- Continuous piano hinge
- Also available in stainless steel

**LEED** ready: This product contributes to LEED credits.

Product	W" x H"	Locks	Weight	Price
MDS	12 x 12	1	6 lbs	\$107.60
MDS	16 x 16	1	7 lbs	\$157.80
MDS	18 x 18	1	11 lbs	\$175.20
MDS	24 x 24	1	19 lbs	\$217.20
MDS	24 x 30	2	24 lbs	\$260.50
MDS	24 x 36	2	27 lbs	\$282.20
MDS	36 x 36	2	41 lbs	\$339.20



## PHS HIGH SECURITY DOOR

FOR ALL SURFACE TYPES

- 10 gauge cold rolled steel plate
- 2" x 2" x 3/16" angle frame
- Lock not included (see pages 12-13)

**LEED** ready: This product contributes to LEED credits.

Product	W" x H"	Locks	Weight	Price
PHS	12 x 12	1	22 lbs	\$503.00
PHS	16 x 16	1	30 lbs	\$523.40
PHS	18 x 18	1	34 lbs	\$553.40
PHS	24 x 24	1	49 lbs	\$629.70
PHS	24 x 36	2	65 lbs	\$795.00
PHS	36 x 36	2	86 lbs	\$915.90

Shown with optional mortise deadbolt lock and cylinder

# CABINETS / VALVE BOXES



## BTA CABINET / VALVE BOX

WITH HIDDEN FLANGE

- 16 gauge cold rolled steel
- Also available in stainless steel
- > Call us for dimensions and pricing



## BTV CABINET / VALVE BOX

WITH WINDOW AND HIDDEN FLANGE

- 16 gauge cold rolled steel
- Also available in stainless steel
- > Call us for dimensions and pricing

**LEED** ready: These products contribute to LEED credits.

Other dimensions are available.  
Call us for details and pricing.

Your odd sizes:  
Made in 5 days



## TRH ROOF HATCH

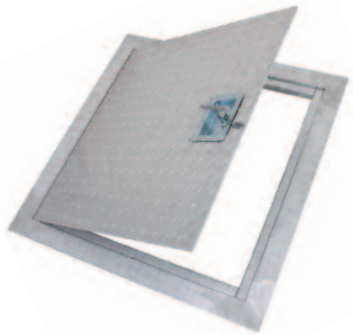
- 14 gauge galvanized steel cover
- 14 gauge galvanized steel curb
- 2 gas cylinders
- Also available in aluminum

**LEED** ready: This product contributes to LEED credits.

Product	W" x H"	Locks	Weight	Price
TRH	36 x 30	1	178 lbs	\$866.20
TRH	36 x 36	1	188 lbs	\$976.00

OTHER SIZES AVAILABLE UPON REQUEST

Freight not included on this item.



## PPA FLUSH ALUMINUM FLOOR HATCH

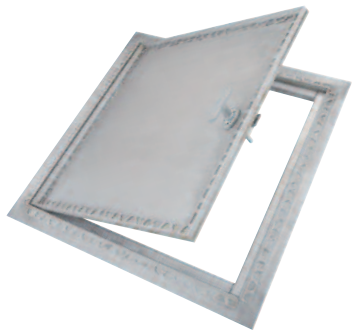
- MATERIAL:  
Door: 1/4" aluminum diamond plate  
Frame: 2" x 2" x 1/4" aluminum angle
- Aluminum piano hinge

Product	W" x H"	Locks	Weight	Price
PPA	24 x 24	1	35 lbs	\$588.30
PPA	24 x 36	1	44 lbs	\$715.50

OTHER SIZES AVAILABLE UPON REQUEST

Freight not included on this item.

**LEED** ready: These products contribute to LEED credits.



## PPA-RE RECESSED ALUMINUM FLOOR HATCH

- MATERIAL:  
Door: smooth 1/4" aluminum plate  
Frame: 2" x 2" x 1/4" aluminum angle
- Aluminum piano hinge
- Recess: 1/8", 3/16", 1/4", 3/8", 1/2", 5/8", 11/16" and 3/4"
- > Call us for dimensions and pricing

**Your odd sizes:  
Made in 5 days**

Other dimensions are available.  
Call us for details and pricing.

Shaded cells represent stock items.

## MEDIUM AND HIGH SECURITY LOCKS AND LATCHES:

PRICES ARE BASED  
ON ONE UNIT PER DOOR



**85 - MORTISE SLAM LATCH** › \$59.80  
The panel will accept cylinders 1 5/32" in diameter from most lock manufacturers (Best, Ilco, Corbin, etc). Enables the slam latch to operate with matching project hardware.  
(CYLINDER OPTIONAL - 85C)



**15 - MORTISE CAM LATCH** › \$44.90  
The panel will accept cylinders 1 5/32" in diameter from most lock manufacturers (Best, Ilco, Corbin, etc).  
(CYLINDER OPTIONAL - 15C)



**C - CYLINDER FOR DEADBOLT LOCK OR MORTISE** › \$39.90  
Keyed different is standard  
Keyed alike is optional - CKA › Call us for pricing



**10 - KEY OPERATED CYLINDER CAM LATCH** › \$12.10  
Price for fire rated doors › \$28.20  
Recommended for security access or where locks are required for controlled access.  
Keyed alike is standard  
Keyed different is optional - 10KD › Call us for pricing



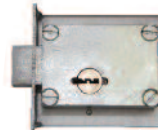
**40 - MORTISE DEADBOLT LOCK** › \$126.40  
Recommended for high security applications. The panel will accept cylinders 1 5/32" in diameter from most lock manufacturers (Best, Ilco, Corbin, etc).  
(CYLINDER OPTIONAL - 40C)



**99 - INSIDE RELEASE THUMBTURN FOR MORTISE DEADBOLT LOCK** › \$43.00  
Allows the door to be opened from the inside of the panel. Serves as a safety mechanism.  
(Available only with - 40)



**45 - MORTISE PREPARATION FOR DETENTION LOCK**  
› Call us for pricing



**46 - DETENTION DEADBOLT LOCK**  
› Call us for pricing



**47 - DETENTION DEADBOLT KEY**  
› Call us for pricing



**90 - PINNED HEX HEAD CAM LATCH** › \$13.50  
Recommended for more secure applications. Requires a special pinned allen key to open the access door.  
AK-90 - ALLEN KEY FOR PINNED HEX HEAD CAM LATCH › \$30.20

## REGULAR LATCHES:



**35 - SCREWDRIVER CAM LATCH**  
Standard on general purpose access doors. Available in cold rolled steel, stainless steel and galvalume steel.  
Price for CTA › \$3.20



**80 - RING/TOOL KEY OPERATED SLAM LATCH**  
Standard latching mechanism on all our fire rated models. It allows the door to shut by itself when attached with a spring.  
› Call us for pricing for all other doors



**220 - SCREWDRIVER OPERATED CYLINDER CAM LATCH**  
Available for PAL and LHD models only.  
› Call us for pricing



**50 - HEX HEAD CAM LATCH** › \$2.30  
Requires a standard allen key to open the access door.  
Offers added security.  
AK-50 - ALLEN KEY › \$1.80



**55 - HEX HEAD SLAM LATCH**  
Requires a standard allen key to open the access door. Offers added security.  
› Call us for pricing  
AK-55 - ALLEN KEY › \$4.05



**30 - SLIDE LATCH**  
Allows the door to be opened using a simple sliding action.  
› Call us for pricing

PRICES ARE BASED ON ONE UNIT PER DOOR

## HANDLES:

PRICES ARE BASED ON ONE UNIT PER DOOR



**20**  
**4" HANDLE OPERATED CAM LATCH**  
 > \$45.30



**21**  
**FIXED 4" HANDLE**  
 > \$29.60



**22**  
**4" HANDLE OPERATED SLAM LATCH**  
 > \$49.80



**25**  
**4" HANDLE AND KEY OPERATED CAM LATCH**  
 > \$69.90



**26**  
**L HANDLE** > \$55.50  
 Allows the door to be opened from the inside of the panel. Available only in combination with options 20, 22 or 25.



**100K**  
**KEY OPERATED RECESSED HANDLE CAM LATCH**  
 > \$23.50  
 Available for PPA model only.

## MATERIALS:

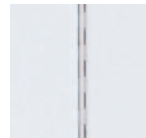
**GALVANNEAL STEEL (SATIN COATED) - GS - ALUMINUM - AL**

**STAINLESS STEEL - SS - COLD ROLLED STEEL - CR** > Call us for pricing

## OTHER OPTIONS:



**60 - GASKET**  
 Recommended to provide weather resistance and to reduce airflow between the panel and frame.  
 > Call us for pricing



**110 - CONTINUOUS PIANO HINGE**  
 Standard on our fire rated doors and usually recommended for use on larger doors. It provides specification compliance when required.  
 > Call us for pricing



**140 - LOUVERED DOORS**  
 Allows ventilation for special applications.  
 > Call us for pricing



**160 - HOLDING CABLE**  
 > Call us for pricing



**180 - DOUBLE LEAF**  
 Recommended for access to large openings.  
 > Call us for pricing



**240 - MASONRY ANCHORS** > \$8.20  
 Recommended to secure the door in place when installed in masonry.



**GY - DRYWALL FLANGE**  
 Only the door will be visible when drywall compound is applied to the corner bead flange.  
 > Call us for pricing



**PLY - PLASTER FLANGE**  
 The 2 3/4" lath flange will disappear when covered with plaster, leaving only the door panel visible.  
 > Call us for pricing



OTHER OPTIONS AVAILABLE UPON REQUEST

# ODD SIZE DOORS

# NON-STANDARD SIZE ACCESS DOORS

## ODD SIZE DOORS MANUFACTURED IN 5 BUSINESS DAYS

### USE ODD SIZE DOORS:

- Where there are wall or ceiling obstructions
- To gain access to special equipment
- For confined spaces
- For poorly framed walls and ceilings
- For existing openings

**ANY DOOR  
ANY SIZE**



Odd size LHD



Odd size AHD



Odd size CTR

# CUSTOM DOORS

# LET US HELP YOU!

## CUSTOM DOORS MANUFACTURED IN 10 BUSINESS DAYS

Call us and together we will design the ideal doors for your special applications.

## CENDREX'S R&D DEPARTMENT

When creating your custom doors you will have access to:

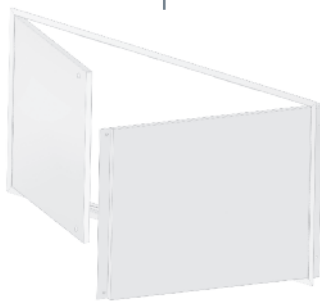
- A team of experienced engineers to help you design the product that best suits your needs
- A technical drawing team using state of the art software to provide you with accurate and precise drawings and prototypes
- A quick response and the shortest lead time in the industry to meet your tight deadlines

### EXAMPLES OF CUSTOM DOORS:

LOUVERS



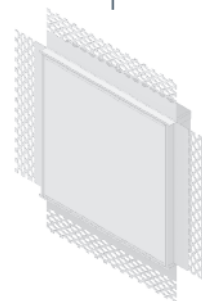
DOUBLE LEAF



EXTRA WIDE FLANGE



PLASTER FLANGE



CUSTOM OPENINGS



## PRICES:

Prices shown on this list are in United States currency (US\$), F.O.B. Montreal, Quebec warehouse or F.O.B. U.S.A. based Cendrex warehouses for stocked products. Prices do not include federal, provincial/state, and/or local taxes. Prices and products are subject to change without notice. Cendrex reserves the right to select the carrier of its choice. Cendrex must receive official purchase orders before shipment of goods. All orders are subject to credit approval prior to shipment.

## PREFERRED PRICES:

Preferred price is available only to distributors purchasing a product mix where CTA adjustable doors represent less than 50% of their total Cendrex access door purchases.

## FREIGHT ALLOWANCE:

Cendrex offers full freight allowance on access door orders of \$1200 or more (net before applicable taxes) shipped within the continental U.S.A. and on orders of \$1500 or more (net before applicable taxes) in California, Oregon, Washington and Arizona. Freight allowance applies to a single location only and for one single shipment. Partial shipments or multiple shipping points do not qualify for freight allowance unless each partial shipment and/or shipping point meets the required level. Oversized and heavy weight products do not qualify for freight allowance.

## DROP SHIP:

Additional charges may be applied for drop ship services.

## TERMS:

Net 30 days. An invoice is considered late if full payment is not received within 30 days from the date the products were shipped. Late payments are subject to an interest charge of 1.25% per month effective the due date. Should legal action prove necessary to collect payment, the purchaser will be held responsible for all court costs and legal fees. Invoices are deemed to have been received unless Cendrex is notified otherwise within five (5) business days of receipt of goods. Cendrex will cease all shipment of goods to customers with overdue accounts (past 45 days).

## MINIMUM ORDERS:

The minimum order is \$50 (net before applicable taxes).

## CANCELLATIONS:

Orders for non-stock items can only be canceled within 30 minutes of the time on the order confirmation.

## RETURNED MERCHANDISE:

Absolutely no returns will be accepted without a formal authorization from Cendrex in the form of a returned goods authorization number (RGA). The purchaser will need to provide Cendrex with the original invoice number or purchase order number covering the material shipped. Limited quantities of stock items, provided they are in good condition, can be returned within 30 days of the date of the original invoice. All products must be returned F.O.B. Cendrex, Montreal. Credit will be issued only when Cendrex has completed a full inspection. If a product is determined, upon receipt and inspection, to be defective, to have been used or is not in resale condition, the product will be refused and returned to the purchaser at their expense or recycled without credit. A 25% (of the total value of goods returned) handling and inspection fee and all related charges necessary to restore the product or its packaging will be deducted from the original product price to be credited. Cendrex's minimum restocking charge is \$50.00 on all items returned for credit. Custom and/or non-stock items can neither be returned nor reimbursed.

## TRANSPORTATION CLAIMS:

The responsibility of Cendrex ceases upon delivery of goods in "good condition" to the transportation company. All goods are shipped at the consignee's risk and the consignee must file a freight claim for any loss or damage to the shipment. Cendrex will file freight claims on full freight allowed orders if the consignee has complied with the following actions within five (5) business days following receipt of the shipment: 1) inspect the shipment immediately upon receipt, 2) have the shipment inspected by the delivering carrier for loss or damage (regardless of the consignee's opinion as to whether it is damaged or defective), 3) file an inspection report with the carrier and send a copy to Cendrex, 4) no claim for failure to receive shipment will be honoured unless Cendrex is notified within five (5) business days following the invoice date.

## PROJECT QUOTATIONS:

Acceptance of quotes must be received within 30 days from the date of the quotation, unless specified otherwise by Cendrex in writing. Special price quotes given for large volume projects will be honoured only if the quantities and products ordered match closely to the quantities and products quoted.

## PRODUCT APPROVAL:

When quoting on substitute materials, every effort is made to quote on materials and products which offer equal or superior value to those originally specified. Cendrex will provide technical data sheets and/or samples for the client's approval. Cendrex's responsibility is limited to providing the material and product exactly as quoted.

## ILLUSTRATIONS:

All standard designs are subject to change without notice and the latest version of the applicable technical data sheet will be in effect at the time the order is filled unless stated otherwise.

## STANDARD ORDERS:

When an order is placed, it is in our mutual interests to have it processed, engineered, built and shipped as quickly as possible. To ensure that this sequence of events is handled expeditiously, each order must contain complete and specific information. All dimensions must be listed in inches (width x height). All orders must have complete shipping information and are subject to Cendrex's standard terms and conditions. The purchaser must submit all orders directly with Cendrex via E-mail at: [orders@cendrex.com](mailto:orders@cendrex.com).

## LIABILITY:

Cendrex's maximum liability is limited to the amount of the original purchase price. Cendrex will not be held responsible for any other costs, expenses or damages, including installation and reinstallation of doors. The distributor is responsible for insuring that Cendrex products comply with all applicable rules, regulations, norms, standards, and bylaws in effect in the appropriate jurisdiction, be it a city, county, state, or country.

## WARRANTY:

All doors manufactured by Cendrex meet or exceed industry standards and are covered by a "Quality Assurance" warranty based on our technical specifications. Cendrex products and all related parts are warranted to be free from defects in materials and workmanship. This warranty covers a ONE (1) year period from the date of shipment. Cendrex is not responsible for any problems caused by faulty installation, abuse or misuse.



# THE CENDREX ADVANTAGE:

CENDREX DESIGNS AND MANUFACTURES HIGH QUALITY STANDARD AND NON-STANDARD ACCESS DOORS, ROOF HATCHES, FLOOR HATCHES AND CABINETS / VALVE BOXES.



VISIT OUR WEBSITE

> **LEED** ready

CENDREX products contribute to obtaining LEED® credits.

All LEED® documents are developed in association with the foremost LEED® certification specialists, YRG in the U.S.A. and Vertima in Canada, to provide you with the most reliable and up-to-date information.

> **CTA:** REVOLUTIONARY ADJUSTABLE ACCESS DOOR

> **CTR:** HIDDEN FLANGE DOOR  
"No need to mud or plaster"

> **ODD SIZE DOORS** MADE IN 5 DAYS

> **CUSTOM DOORS** MADE IN 10 DAYS



## WAREHOUSES



info@cendrex.com

Tel.: 1 800 479-1489

Fax: 1 800 297-1489

www.cendrex.com

