



Battery Powered Portable Shower User Guide

IVAPSH01



Thank you for purchasing the Ivation® battery powered portable shower. This User Guide is intended to provide you with guidelines to ensure that operation of this product is safe and does not pose risk to the user. Any use that does not conform to the guidelines described in this User Guide may void the limited warranty.

Please read all directions before using the product and retain this guide for reference. This product is intended for household use only.

This product is covered by a limited one-year warranty. Coverage is subject to limits and exclusions. See warranty for details.

Important Safety Instructions

1. Please read all instructions before using appliance
2. Follow all maintenance instructions specified in this manual
3. Use only with water within 50°F to 122°F temperature range
4. Choking hazard: Shower assembly includes small parts

WARNING

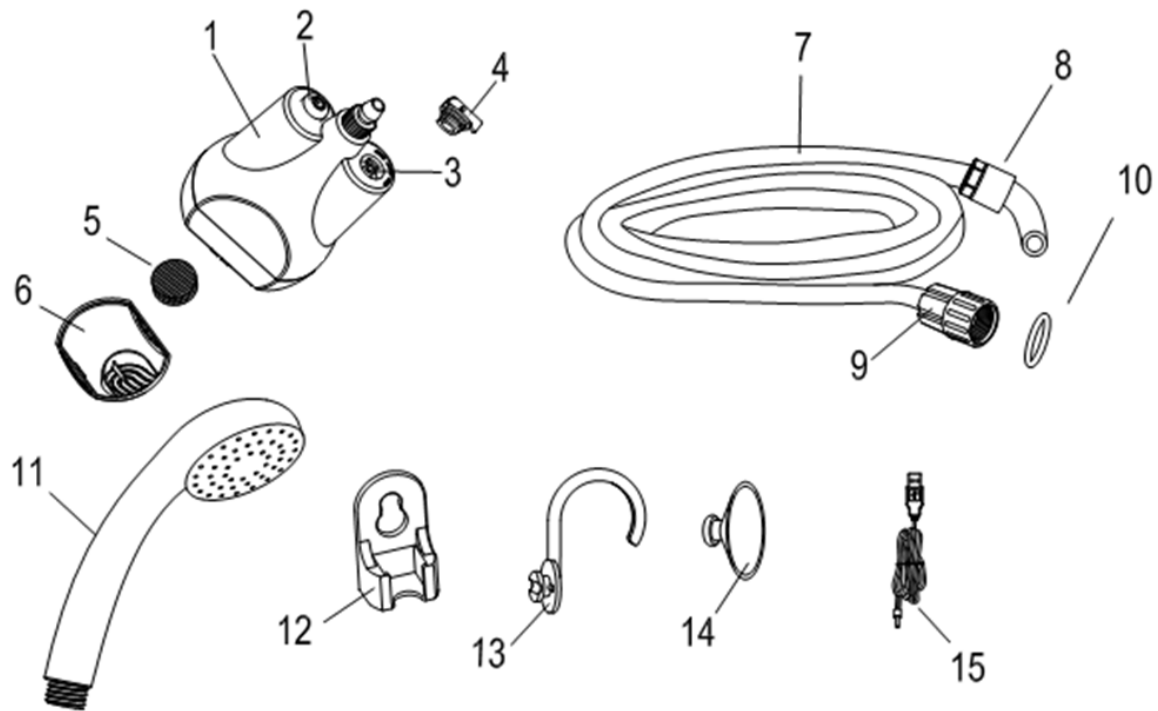
To reduce risk of injury:

1. Do not leave appliance unattended when in use. Switch unit off and remove from water when not in use.
2. Use only as described in this manual with manufacturer's recommended attachments and replacement parts.
3. Do not use shower with seawater, pool water or river water, or with any liquid other than water.
4. Ensure that base of pump is fully submerged in water before turning power on.
5. Children should be supervised and properly instructed.
6. Recharge pump using specification required. Output: 5V, 0.5-1A.
7. Do not use damaged power cord or plug.
8. Charge only using correct voltage as listed on the shower plate. Using improper voltage may result in damage to motor and possible injury to user.
9. Before each use, ensure that there are no broken or worn parts and that all screws are fully tightened.
10. Keep shower away from fire or heating source.
11. Keep shower from freezing. Extreme cold will damage motor and cord.
12. Do not remove cover plate or attempt to disassemble machine. This will void all warranties.

Box Contents

- Battery powered portable shower
- S-hook
- Suction cup hanger
- USB charging cable
- User guide

Parts & Controls



1. Powered Pump
2. On/Off Switch
3. Charging Socket
4. Socket Cover
5. Inlet Filter
6. Filter Cover
7. Hose
8. Inlet Connector
9. Outlet Connector
10. O-Ring
11. Shower Head
12. Resting Bracket
13. Hanging Hook
14. Suction Cup
15. USB Charging Cable

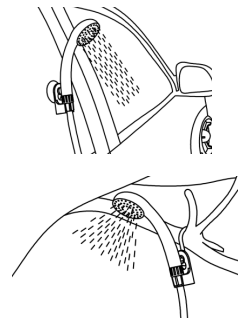
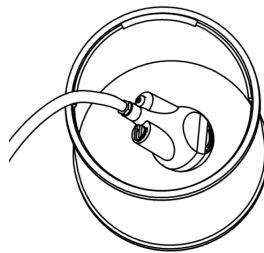
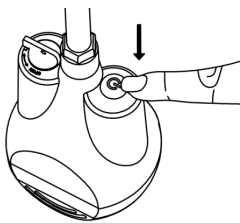
Usage

Assemble Parts



- Attach inlet connector (part #8) to pump (part #1) and tighten by turning counterclockwise. Ensure tight seal to avoid leakage.
- Insert O-ring (part #10) into outlet connector (part #9).
- Attach outlet connector (Part #9) to shower head (part #11) and tighten by turning counterclockwise.

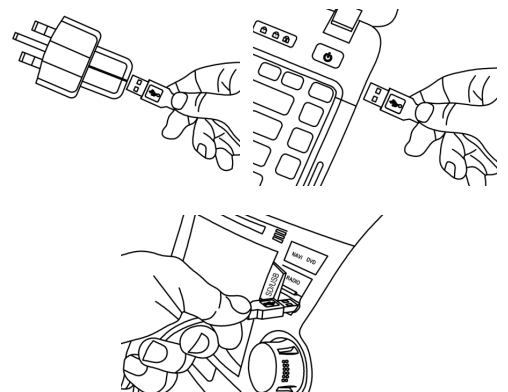
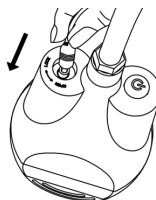
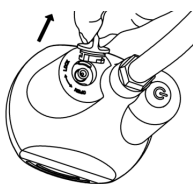
Operate Battery Powered Portable Shower



- Press On/Off switch (part #2) to turn on.
- Submerge pump (part #1) in water and hold shower head (part #11) level with pump.
IMPORTANT: Allow pipe to fill up without overworking pump mechanism.
- Wait until pipe is filled with water.
- Position shower head (part #11) using included hook (part #13) or bracket (part #12).

Important: Ensure shower head is securely positioned before use. Do not remove pump from water while in use – power off pump before removing.

Charge Built-In Battery



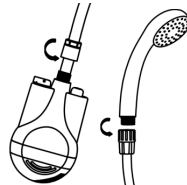
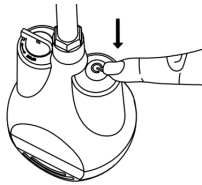
- Open socket cover (part #4) by turning it clockwise.
- Insert included USB charging cable (part #15) into charging socket (part #3).
- Plug USB charging cable (part #15) into mobile phone charger (2.5 hours), car USB (2.5 hours), or computer USB output (5 hours).

Automatic Interrupt

For battery protection, Battery Powered Portable Shower is designed to shut off automatically in the event that voltage drops under 2.7 volts.

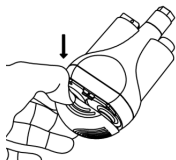
Note: Please do not restart shower device before recharging it.

General Maintenance



Detach Shower Device:

- Shut off device by pressing On/Off switch (part #2)
- Disconnect hose from pump (part #1) and shower head (part #11). Drain any water from hose.
- Remove O-ring (part #10) from outlet connector (part #9) and store safely Important: Keep pump away from very high or very low temperatures, and from flammable or explosive goods.



Clean Filter:

- Remove filter cover (part #6)
- Clean filter (part #5) and filter cover (part #6) using warm water and liquid soap
- Reconnect filter (part #5) and filter cover (part #6)

Battery Care:

- Charge battery fully before first use. Charge fully after each use to ensure maximum battery life
- To ensure battery remains in charged state, recharge battery at least once every three months. Battery will deplete when stored for long periods
- Do not charge battery beyond output 5V, 0.5-1A
- Check battery clamps regularly for looseness, corrosion, defect or leakage.
Maintenance may be required
- Store away from high temperatures and flammable or explosive goods

Technical Specifications

Power supply: 3.7V, 2A

Battery: Rechargeable 2200mAh lithium

Charging method: USB (5V)

Charging time: Approx. 2-5 hrs.

Operating time on full charge: Approx. 45-60 min.

Water flow: .66 gal. (2.5L) per minute

Water filtration: Built-in

Hose length: 6.5 ft.

Dimensions: 3.2" x 2.4" x 10" (83 x 61 x 151.5mm)

Weight: 1.9 lbs. (.9kg)

Customer service:

info@myivation.com

866-849-3049

Distributed by
C&A Marketing, Inc.
114 Tived Lane East
Edison, NJ 08837 USA

Europe: C&A Europe
167 Hermitage Road
Crusader Industrial Estate
London N4 1LZ
United Kingdom

info@myivatn.com

Made in China
Ivation and the Ivation logo are registered
trademarks of C&A Holdings, LLC in the U.S.
©2017 All rights reserved