



**MICROCHIP**

---

**Chip-Scale Atomic Clock (CSAC)  
SA65  
User's Guide**

---

**Note the following details of the code protection feature on Microchip devices:**

- Microchip products meet the specifications contained in their particular Microchip Data Sheet.
- Microchip believes that its family of products is secure when used in the intended manner and under normal conditions.
- There are dishonest and possibly illegal methods being used in attempts to breach the code protection features of the Microchip devices. We believe that these methods require using the Microchip products in a manner outside the operating specifications contained in Microchip's Data Sheets. Attempts to breach these code protection features, most likely, cannot be accomplished without violating Microchip's intellectual property rights.
- Microchip is willing to work with any customer who is concerned about the integrity of its code.
- Neither Microchip nor any other semiconductor manufacturer can guarantee the security of its code. Code protection does not mean that we are guaranteeing the product is "unbreakable." Code protection is constantly evolving. We at Microchip are committed to continuously improving the code protection features of our products. Attempts to break Microchip's code protection feature may be a violation of the Digital Millennium Copyright Act. If such acts allow unauthorized access to your software or other copyrighted work, you may have a right to sue for relief under that Act.

---

Information contained in this publication is provided for the sole purpose of designing with and using Microchip products. Information regarding device applications and the like is provided only for your convenience and may be superseded by updates. It is your responsibility to ensure that your application meets with your specifications.

THIS INFORMATION IS PROVIDED BY MICROCHIP "AS IS". MICROCHIP MAKES NO REPRESENTATIONS OR WARRANTIES OF ANY KIND WHETHER EXPRESS OR IMPLIED, WRITTEN OR ORAL, STATUTORY OR OTHERWISE, RELATED TO THE INFORMATION INCLUDING BUT NOT LIMITED TO ANY IMPLIED WARRANTIES OF NON-INFRINGEMENT, MERCHANTABILITY, AND FITNESS FOR A PARTICULAR PURPOSE OR WARRANTIES RELATED TO ITS CONDITION, QUALITY, OR PERFORMANCE.

IN NO EVENT WILL MICROCHIP BE LIABLE FOR ANY INDIRECT, SPECIAL, PUNITIVE, INCIDENTAL OR CONSEQUENTIAL LOSS, DAMAGE, COST OR EXPENSE OF ANY KIND WHATSOEVER RELATED TO THE INFORMATION OR ITS USE, HOWEVER CAUSED, EVEN IF MICROCHIP HAS BEEN ADVISED OF THE POSSIBILITY OR THE DAMAGES ARE FORESEEABLE. TO THE FULLEST EXTENT ALLOWED BY LAW, MICROCHIP'S TOTAL LIABILITY ON ALL CLAIMS IN ANY WAY RELATED TO THE INFORMATION OR ITS USE WILL NOT EXCEED THE AMOUNT OF FEES, IF ANY, THAT YOU HAVE PAID DIRECTLY TO MICROCHIP FOR THE INFORMATION. Use of Microchip devices in life support and/or safety applications is entirely at the buyer's risk, and the buyer agrees to defend, indemnify and hold harmless Microchip from any and all damages, claims, suits, or expenses resulting from such use. No licenses are conveyed, implicitly or otherwise, under any Microchip intellectual property rights unless otherwise stated.

**Trademarks**

The Microchip name and logo, the Microchip logo, Adaptec, AnyRate, AVR, AVR logo, AVR Freaks, BesTime, BitCloud, chipKIT, chipKIT logo, CryptoMemory, CryptoRF, dsPIC, FlashFlex, flexPWR, HELDO, IGLOO, JukeBlox, KeeLoq, Kleer, LANCheck, LinkMD, maXStylus, maXTouch, MediaLB, megaAVR, Microsemi, Microsemi logo, MOST, MOST logo, MPLAB, OptoLyzer, PackeTime, PIC, picoPower, PICSTART, PIC32 logo, PolarFire, Prochip Designer, QTouch, SAM-BA, SenGenuity, SpyNIC, SST, SST Logo, SuperFlash, Symmetricom, SyncServer, Tachyon, TimeSource, tinyAVR, UNI/O, Vectron, and XMEGA are registered trademarks of Microchip Technology Incorporated in the U.S.A. and other countries.

AgileSwitch, APT, ClockWorks, The Embedded Control Solutions Company, EtherSynch, FlashTec, Hyper Speed Control, HyperLight Load, IntelliMOS, Libero, motorBench, mTouch, Powermite 3, Precision Edge, ProASIC, ProASIC Plus, ProASIC Plus logo, Quiet-Wire, SmartFusion, SyncWorld, Temux, TimeCesium, TimeHub, TimePictra, TimeProvider, WinPath, and ZL are registered trademarks of Microchip Technology Incorporated in the U.S.A.

Adjacent Key Suppression, AKS, Analog-for-the-Digital Age, Any Capacitor, AnyIn, AnyOut, Augmented Switching, BlueSky, BodyCom, CodeGuard, CryptoAuthentication, CryptoAutomotive, CryptoCompanion, CryptoController, dsPICDEM, dsPICDEM.net, Dynamic Average Matching, DAM, ECAN, Espresso T1S, EtherGREEN, IdealBridge, In-Circuit Serial Programming, ICSP, INICnet, Intelligent Paralleling, Inter-Chip Connectivity, JitterBlocker, maxCrypto, maxView, memBrain, Mindi, MiWi, MPASM, MPF, MPLAB Certified logo, MPLIB, MPLINK, MultiTRAK, NetDetach, Omniscient Code Generation, PICDEM, PICDEM.net, PICkit, PICtail, PowerSmart, PureSilicon, QMatrix, REAL ICE, Ripple Blocker, RTAX, RTG4, SAM-ICE, Serial Quad I/O, simpleMAP, SimpliPHY, SmartBuffer, SMART-I.S., storClad, SQI, SuperSwitcher, SuperSwitcher II, Switchtec, SynchroPHY, Total Endurance, TSHARC, USBCheck, VariSense, VectorBlox, VeriPHY, ViewSpan, WiperLock, XpressConnect, and ZENA are trademarks of Microchip Technology Incorporated in the U.S.A. and other countries.

SQTP is a service mark of Microchip Technology Incorporated in the U.S.A.

The Adaptec logo, Frequency on Demand, Silicon Storage Technology, and Symmcom are registered trademarks of Microchip Technology Inc. in other countries.

GestIC is a registered trademark of Microchip Technology Germany II GmbH & Co. KG, a subsidiary of Microchip Technology Inc., in other countries.

All other trademarks mentioned herein are property of their respective companies.

© 2021, Microchip Technology Incorporated, All Rights Reserved.

ISBN: 978-1-5224-8485-1

For information regarding Microchip's Quality Management Systems, please visit [www.microchip.com/quality](http://www.microchip.com/quality).

---

---

## Preface

---

---

### NOTICE TO CUSTOMERS

All documentation becomes dated, and this manual is no exception. Microchip tools and documentation are constantly evolving to meet customer needs, so some actual dialogs and/or tool descriptions may differ from those in this document. Please refer to our website ([www.microchip.com](http://www.microchip.com)) to obtain the latest documentation available.

Documents are identified with a “DS” number. This number is located on the bottom of each page, in front of the page number. The numbering convention for the DS number is “DSXXXXXXXXA”, where “XXXXXXXX” is the document number and “A” is the revision level of the document.

For the most up-to-date information on development tools, see the MPLAB® IDE online help. Select the Help menu, and then Topics, to open a list of available online help files.

### PURPOSE OF THIS GUIDE

The CSAC user's guide provides basic recommendations for designing products to use Microchip's Chip-Scale Atomic Clock (CSAC) SA65. The guidelines in the document are generic because specific product requirements vary from one application to the other.

This material consists of a brief description of CSAC design supported by block diagrams, description of environmental issues, installation guidelines, and unit operation.

### WHO SHOULD READ THIS GUIDE

This document is intended for engineers and telecommunications professionals who are designing, installing, operating, or maintaining time, frequency, and synchronization systems having a requirement for a low profile and highly precise frequency generator.

To use this document effectively, you should have a good understanding of digital telecommunications technologies and analog frequency generation and synthesis techniques.

### DOCUMENT LAYOUT

This guide contains the following sections:

- **Chapter 1. “Product Overview”**: Provides an overview of the product, describes the major hardware and software features, and lists the system specifications.
- **Chapter 2. “Functional Description”**: Contains the Principle of Operation, Start-Up Sequence, and aspects related to first power-up.
- **Chapter 3. “Programmer's Reference”**: Provides an overview of the telemetry interface and command structure.
- **Chapter 4. “Developer's Kit”**: Describes the package contents, evaluation board information, and how to use the CSACdemo software.
- **Chapter 5. “Design Guide”**: Contains information about disciplining, heat sinking, soldering, and additional notes about the evaluation board.

## CONVENTIONS USED IN THIS GUIDE

This manual uses the following documentation conventions:

### DOCUMENTATION CONVENTIONS

Description	Represents	Examples
<b>Arial font:</b>		
Italic characters	Referenced books	<i>MPLAB<sup>®</sup> IDE User's Guide</i>
	Emphasized text	...is the <i>only</i> compiler...
Initial caps	A window	the Output window
	A dialog	the Settings dialog
	A menu selection	select Enable Programmer
Quotes	A field name in a window or dialog	"Save project before build"
Underlined, italic text with right angle bracket	A menu path	<u><i>File&gt;Save</i></u>
Bold characters	A dialog button	Click <b>OK</b>
	A tab	Click the <b>Power</b> tab
N'Rnnnn	A number in verilog format, where N is the total number of digits, R is the radix and n is a digit.	4'b0010, 2'hF1
Text in angle brackets < >	A key on the keyboard	Press <Enter>, <F1>
<b>Courier New font:</b>		
Plain Courier New	Sample source code	#define START
	Filenames	autoexec.bat
	File paths	c:\mcc18\h
	Keywords	_asm, _endasm, static
	Command-line options	-Opa+, -Opa-
	Bit values	0, 1
	Constants	0xFF, 'A'
Italic Courier New	A variable argument	<i>file.o</i> , where <i>file</i> can be any valid filename
Square brackets [ ]	Optional arguments	mcc18 [options] <i>file</i> [options]
Curly brackets and pipe character: {   }	Choice of mutually exclusive arguments; an OR selection	errorlevel {0 1}
Ellipses...	Replaces repeated text	var_name [, var_name...]
	Represents code supplied by user	void main (void) { ... }

## WARNINGS, CAUTIONS, RECOMMENDATIONS, AND NOTES

Warnings, Cautions, Recommendations, and Notes attract attention to essential or critical information in this guide. The types of information included in each are displayed in a style consistent with the examples below.

### WARNING

To avoid serious personal injury or death, do not disregard warnings. All warnings use this style. Warnings are installation, operation, or maintenance procedures, practices, or statements, that if not strictly observed, may result in serious personal injury or even death.

### CAUTION

To avoid personal injury, do not disregard cautions. All cautions use this style. Cautions are installation, operation, or maintenance procedures, practices, conditions, or statements, that if not strictly observed, may result in damage to, or destruction of, the equipment. Cautions are also used to indicate a long-term health hazard.

**Note:** All notes use this style. Notes contain installation, operation, or maintenance procedures, practices, conditions, or statements that alert you to important information, which may make your task easier or increase your understanding.

## WHERE TO FIND ANSWERS TO PRODUCT AND DOCUMENT QUESTIONS

For additional information about the products described in this guide, please contact your Microchip representative or your local sales office. You can also contact us on the web at [www.microchip.com/csac](http://www.microchip.com/csac).

When this manual is updated the latest version will be available for downloading from Microchip's web site. Manuals are provided in PDF format for ease of use. After downloading, you can view the manual on a computer or print it using Adobe Acrobat Reader.

Manual updates are available at: [www.microchip.com/csac](http://www.microchip.com/csac).

## RELATED DOCUMENTS AND INFORMATION

See your Microchip representative or sales office for a complete list of available documentation. To order any accessory, contact the Microchip Sales Department. See [www.microsemi.com/sales-contacts/0](http://www.microsemi.com/sales-contacts/0) for sales support contact information. If you encounter any difficulties installing or using the product, contact Microchip Frequency and Time Systems (FTS) Services and Support:

### **U.S.A. Call Center: including Americas, Asia and Pacific Rim**

Microchip Frequency and Time Systems

3870 N 1st St.

San Jose, CA 95134

Toll-free in North America: 1-888-367-7966

Telephone: 408-428-7907

Fax: 408-428-7998

email: [ftd.support@microchip.com](mailto:ftd.support@microchip.com)

Internet: [www.microchip.com/csac](http://www.microchip.com/csac)

## **Europe, Middle East, and Africa (EMEA)**

Microchip FTS Services and Support EMEA

Alllaufstrasse 42

85635 Hoehenkirchen-Siegersbrunn

Germany

Telephone: +49 700 3288 6435

Fax: +49 8102 8961 533

email: [ftd.emeasupport@microsemi.com](mailto:ftd.emeasupport@microsemi.com)

email: [ftd.emea\\_sales@microsemi.com](mailto:ftd.emea_sales@microsemi.com)

## **THE MICROCHIP WEBSITE**

Microchip provides online support via our website at [www.microchip.com](http://www.microchip.com). This website is used as a means to make files and information easily available to customers. Accessible by using your favorite Internet browser, the website contains the following information:

- **Product Support** – Data sheets and errata, application notes and sample programs, design resources, user's guides and hardware support documents, latest software releases and archived software
- **General Technical Support** – Frequently Asked Questions (FAQs), technical support requests, online discussion groups, Microchip consultant program member listing
- **Business of Microchip** – Product selector and ordering guides, latest Microchip press releases, listing of seminars and events, listings of Microchip sales offices, distributors and factory representatives

## **CUSTOMER SUPPORT**

Users of Microchip products can receive assistance through several channels:

- Distributor or Representative
- Local Sales Office
- Field Application Engineer (FAE)
- Technical Support

Customers should contact their distributor, representative or field application engineer (FAE) for support. Local sales offices are also available to help customers. A listing of sales offices and locations is included in the back of this document.

Technical support is available through the website at:

<http://www.microchip.com/support>.

## DOCUMENT REVISION HISTORY

### Revision A (May 2021)

- Initial release of this document as Microchip DS50003159A.

### Revision B (June 2021)

- Updated the note box in **Section 3.3.11 “Set HeaterBoostLimit (.)”**.



---

---

## Table of Contents

---

---

<b>Preface</b> .....	<b>3</b>
Purpose of This Guide.....	3
Who Should Read This Guide.....	3
Document Layout .....	3
Conventions Used in this Guide .....	4
Warnings, Cautions, Recommendations, and Notes.....	5
Where to Find Answers to Product and Document Questions .....	5
Related Documents and Information .....	5
The Microchip Website .....	6
Customer Support .....	6
Document Revision History .....	7
<b>Chapter 1. Product Overview</b>	
1.1 Introduction.....	10
1.2 SA.45s Overview .....	10
1.2.1 Packaging.....	11
1.2.2 Absolute Minimum and Maximum Ratings .....	11
1.2.3 Mechanical Interface and Mounting Considerations.....	12
1.2.4 Recommended Operating Characteristics.....	13
<b>Chapter 2. Functional Description</b>	
2.1 Principle of Operation.....	14
2.2 Start-Up Sequence .....	15
2.3 Built-In Test Equipment (BITE) .....	15
2.4 RF Output Characteristics .....	16
2.5 What to Expect During First Power-Up .....	16
2.6 Frequency Steering .....	16
2.6.1 Frequency Calibration .....	18
2.7 1PPS Output .....	19
2.8 1PPS Synchronization.....	19
2.8.1 Manual Synchronization .....	19
2.8.2 Automatic Synchronization .....	20
2.9 1PPS Disciplining .....	20
2.9.1 Cable Length Compensation .....	21
2.10 Time-of-Day.....	22
2.11 Analog Tuning .....	23
2.12 Ultra-Low Power Operating Mode .....	24
2.13 1PPS Phase Measurement Mode .....	26



# CSAC SA65 User's Guide

---

## Chapter 3. Operation

3.1 Overview of Telemetry Interface .....	28
3.1.1 Checksum (Error-Checking Option for Telemetry Interface Communications).....	28
3.1.2 How to Calculate the Checksum .....	29
3.2 Command Summary .....	29
3.3 Detailed Command Descriptions.....	30
3.3.1 Telemetry (6 and ^).....	30
3.3.2 Frequency Adjustment (F) .....	32
3.3.3 Set/Clear Operating Modes (M).....	33
3.3.4 1PPS Synchronization (S) .....	34
3.3.5 Set 1PPS Disciplining Time Constant (D).....	35
3.3.6 Set 1PPS Disciplining Cable Length Compensation (DC).....	35
3.3.7 Set Ultra-Low Power Mode Parameters (U) .....	35
3.3.8 Time-of-Day (TOD) .....	36
3.3.9 Set 1PPS Phase Threshold for Discipline Status OK Check (m).....	37
3.3.10 Set 1PPS Out Pulse Width as an Integer Multiple of Default Width (>)....	37
3.3.11 Deferred Command (@) .....	38
3.3.12 Help (?).....	38

## Chapter 4. Developer's Kit

4.1 Package Contents .....	40
4.2 Evaluation Board Overview .....	40
4.3 Installing the CSAC on the Evaluation Board.....	41
4.4 Cabling .....	41
4.5 CSACdemo Software Installation .....	42
4.6 CSACdemo Operation.....	42
4.6.1 Initial Power-On .....	42
4.6.2 Establishing Communication .....	42
4.6.3 Monitoring Communications.....	43
4.6.4 Observing Acquisition.....	43
4.7 Data Acquisition with CSACdemo .....	44

## Chapter 5. Design Guide

5.1 The Art of Disciplining .....	46
5.2 Heat Sink.....	47
5.3 Notes on Soldering.....	47
5.4 Notes on the Evaluation Board.....	48
5.5 Time Error of a CSAC .....	49
5.6 Writes to NVRAM .....	49

<b>Worldwide Sales and Service .....</b>	<b>51</b>
--	-----------

---

---

## Chapter 1. Product Overview

---

---

### 1.1 INTRODUCTION

The Microchip Model SA65 Chip-Scale Atomic Clock (CSAC) is the world's smallest, lowest power atomic clock technology. This user's guide provides the basic guidelines and recommendations for designing products with the CSAC. These are generic and should be tailored for each application.

This document is intended for engineers, technicians, and technologists who are designing, installing, operating or maintaining time, frequency, and synchronization systems. The CSAC is a low-profile, highly precise frequency generator. To use this document effectively, an understanding of digital communication technologies is required. It is advantageous to have a background in frequency generation and synthesis techniques.

### 1.2 SA65 OVERVIEW

The Microchip SA65 CSAC provides the accuracy and stability of atomic clock technology with reduced size, weight, and power consumption. The small size (less than 17 cc) and low power consumption of the CSAC (less than 125 mW) enable atomic timing accuracy in portable, battery-powered applications.



**FIGURE 1-1:** *Microchip SA65 Chip-Scale Atomic Clock (CSAC).*

The CSAC provides RF and 1PPS outputs at standard CMOS levels. It accepts a 1PPS input to synchronize the output to within 100 ns of a reference clock. It can also discipline its phase and frequency to within 1 ns and  $1 \times 10^{-12}$  of the reference clock, respectively.

This user's guide provides engineering information for use of the CSAC. It also provides supporting information for use of the Developer's Kit (p/n 990-00123-00x). The design details of the developer's kit can be used to assist with host system design (for example, power conditioning or signal buffering). This guide must be used in conjunction with the current data sheet for SA65 CSAC, which is available on the Microchip website at [www.microchip.com](http://www.microchip.com).

## CAUTION

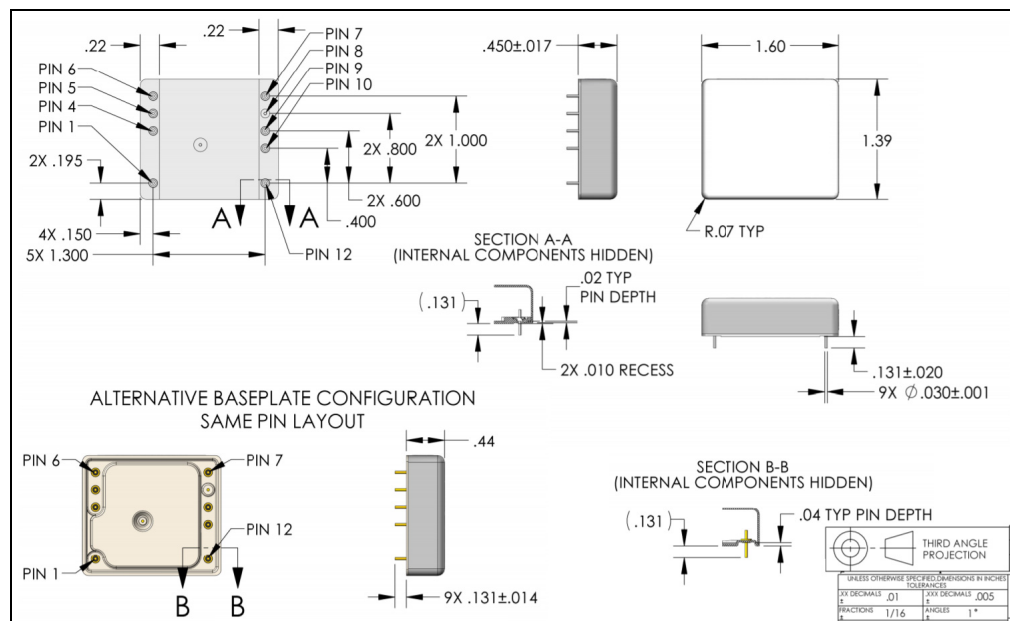
To avoid electrostatic discharge (ESD) damage, proper ESD handling procedures must be observed in unpacking, assembling, and testing the CSAC.

### 1.2.1 Packaging

Retain the original CSAC ESD-safe packaging material in the event that the device needs to be returned to Microchip for service.

### 1.2.2 Mechanical Interface and Mounting Considerations

The physical dimensions of the CSAC are 1.6" x 1.4" x 0.45" H. [Figure 1-2](#) shows the detailed dimensions of CSAC. The CSAC baseplate and cover are 80% nickel-iron magnetic alloy per ASTM A753, Type 4 (Mu-Metal or Hy-Mu80™).



**FIGURE 1-2:** SA65 CSAC Interface Control Drawing.

[Table 1-1](#) shows the pinout of the CSAC.

**TABLE 1-1: CSAC SA65 PINOUT**

Pin	I.D.	Pinout Diagram
1	Tune	
2	N/A	
3	N/A	
4	BITE	
5	Tx	
6	Rx	
7	VCC	
8	GND	
9	1PPS Input	
10	1PPS Output	
11	N/A	
12	RF Output	

**Note:** Pins labeled “N/A” are not present in the CSAC.

### 1.2.3 Recommended Operating Characteristics

The CSAC pinout is shown in [Table 1-1](#). The electrical function of each pin is shown in [Table 1-2](#).

**TABLE 1-2: RECOMMENDED OPERATING CHARACTERISTICS**

Pin	Function	Level	Reference Section
1	Analog tuning input (Note 1)	0V to 2.5V	<b>Section 2.12 “Analog Tuning”</b>
4	Built-In Test Equipment (BITE) (Note 2)	LogicH > 2.8V LogicL < 0.3V	<b>Section 2.3 “Built-In Test Equipment (BITE)”</b>
5, 6	Serial Communication	2.8V < LogicH < 3.0V 0V < LogicL < 0.3V	<b>Chapter 3. “Programmer’s Reference”</b>
7	VCC	3.3V ±0.1V	—
8	Ground	—	—
9	1PPS In (Note 3)	2.5V < LogicH < 3.3V 0V < LogicL < 0.5V	—
10	1PPS Out (Note 4, Note 5)	LogicH > 2.8V LogicL < 0.3V	<b>Section 2.7 “1PPS Output”</b>
12	RF Out	LogicH > 2.8V LogicL < 0.3V	<b>Section 2.4 “RF Output Characteristics”</b>

- Note 1:** Analog Tuning Sensitivity is  $\Delta f/f = (V_{TUNE} - 1250 \text{ mV}) \times 1.77 \times 10^{-11}/\text{mV}$ .
- 2:** Built-In Test Equipment: 0 = Normal operation, 1 = Unlock condition.
- 3:** Timing reference is rising edge of input pulse on pin 9.
- 4:** Output 1PPS pulse duration adjustment depends on CSAC RF output frequency. For 10 MHz CSAC, output pulse is adjustable from 100  $\mu\text{s}$  to 400  $\mu\text{s}$  in 100  $\mu\text{s}$  increments. Output pulse is 100  $\mu\text{s}$  in duration for option 001. Refer to the data sheet for other options. (400  $\mu\text{s}$  for firmware versions 1.06 and earlier).
- 5:** Timing reference is the rising edge of pin 10. Rise time <10 ns at a load capacitance of 10 pF.
- 6:** See the SA65 CSAC data sheet for updated parameters.

# CSAC SA65 User's Guide

---

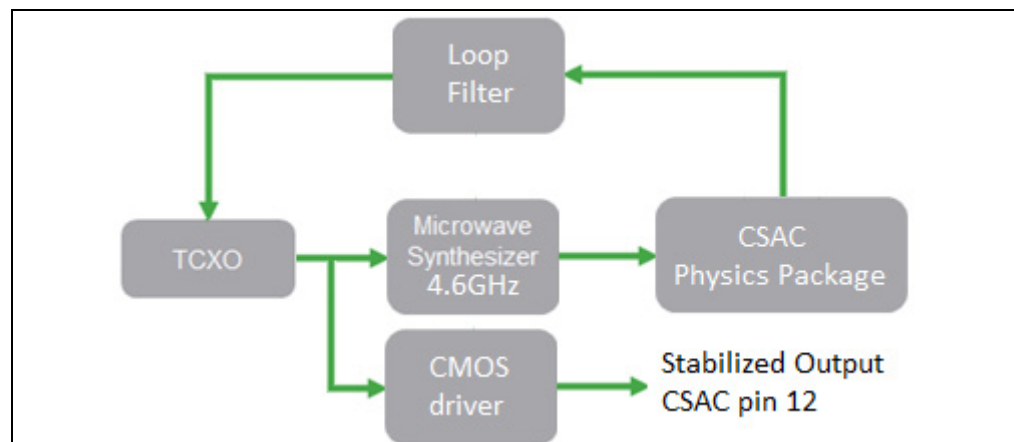
NOTES:

## Chapter 2. Functional Description

The following is a functional description of the CSAC.

### 2.1 PRINCIPLE OF OPERATION

The CSAC is a passive atomic clock, incorporating the interrogation technique of coherent population trapping (CPT) and operating on the D1 optical resonance of atomic cesium. A complete description of passive atomic clocks, CPT, and the CSAC architecture is beyond the scope of this user's guide. The following illustration shows a simplified block diagram of the CSAC.



**FIGURE 2-1:** Simplified CSAC Block Diagram.

The principal RF output from the CSAC is provided by a temperature-compensated crystal oscillator (TCXO), which is buffered by a CMOS logic gate and provided on the CSAC output pin 12. In normal operation, the frequency of the TCXO is continuously compared and corrected to the ground state hyperfine frequency of the cesium atoms, contained within the physics package, which thereby improves the stability and environmental sensitivity of the TCXO by four to five orders of magnitude. In addition to the TCXO and the physics package (Note 1), the essential components of the CSAC are the microwave synthesizer and the microprocessor (Note 2). The microwave synthesizer generates 4596.3x MHz with tuning resolution of approximately  $1 \times 10^{-12}$ . The microprocessor serves multiple functions, including implementation of the frequency-lock loop filter for the TCXO, optimization of physics package operation, state-of-health monitoring, and command and control through the serial communications port.

When the CSAC is initially powered on, it performs an acquisition sequence, which includes stabilizing the temperature of the physics package, optimizing physics package operating parameters, and acquiring frequency lock to the atomic resonance. The acquisition process may be monitored through the status field of the telemetry (see Section 3.3.1 “Telemetry (6 and ^)”). On power-up, the status begins at 8 (oven warm-up). The status value decrements numerically through the acquisition until normal operation (status = 0) is achieved. On rare occasions, the status countdown will reset during the acquisition. This is normal behavior if it does not disrupt the time-to-lock specification.

# CSAC SA65 User's Guide

---

**Note 1:** R. Lutwak, et. al., The Chip-Scale Atomic Clock - Low-Power Physics Package, Proceedings of the 36th Annual Precise Time and Time Interval (PTTI) Systems and Applications Meeting, December 7–9, 2004, Washington, DC.

**2:** R. Lutwak, et. al., The MAC - A Miniature Atomic Clock, Proceedings of the 2005 Joint IEEE International Frequency Control Symposium and Precise Time & Time Interval Systems & Applications Meeting, August 29–31, 2005, Vancouver, BC.

## 2.2 START-UP SEQUENCE

### CAUTION

**To avoid severe damage to the unit, do not apply power to the incorrect terminals. The CSAC does not have reverse voltage protection.**

When power is connected to pin 7, the CSAC unit begins its warm-up cycle. 10 MHz and 1 PPS output signals appear immediately upon power-up, but the output signals are not stable until the atomic control loop is locked (indicated CMOS\_low on the BITE pin).

Within 3 minutes at 25°C, the CSAC achieves Lock and BITE = 0 (**Section 2.3 “Built-In Test Equipment (BITE)”**). Power consumption during warm-up is greater than during normal operation; as specified on the CSAC data sheet.

It is recommended to always allow CSAC to remain powered on for >102 seconds after it acquires LOCK, after which CSAC will store the recently acquired set points to memory. Allowing the CSAC to periodically store its set points minimizes the possibility of the CSAC subsequently powering on with obsolete set points. Otherwise, upon the next power up, the unit may need to reacquire its set points and time-to-lock may be out of specification.

## 2.3 BUILT-IN TEST EQUIPMENT (BITE)

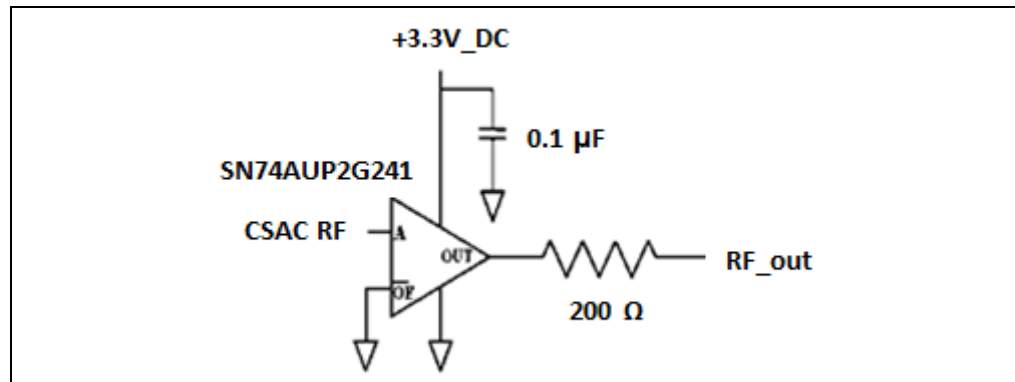
CSAC state-of-health can be monitored electronically on pin 4 (BITE) of the CSAC. Frequency lock is indicated both by status = 0 in the status field of telemetry and by the electrical state of the BITE output pin, which is high (logic 1) upon initial power-on and whenever status  $\neq$  0. The BITE pin is a high impedance CMOS logic output.

**Note:** When not locked, BITE = 1 and also status  $\neq$  0 in the status field of the telemetry output string.

At the conclusion of the acquisition sequence (status = 0), BITE remains high for an additional 5 seconds in order to avoid false indication in the event of acquisition failure. Subsequently, BITE provides an immediate (within 2 seconds) indication of lock failure or alarm.

## 2.4 RF OUTPUT CHARACTERISTICS

The buffered CMOS RF output is provided on pin 12 of the CSAC. The output series impedance is 200Ω. For reference, the output driver circuit of the CSAC is shown in the following illustration.



**FIGURE 2-2:** CSAC RF Output Driver Circuit.

The CSAC is designed for embedded low-power applications. It is expected to drive a high impedance input, not a 50Ω measurement instrument or transmission line.

**Note:** Driving a 50Ω line at 13 dBm consumes nearly as much power as the CSAC itself. If a low impedance output driver is required, a driver circuit must be implemented external to the CSAC, such as the one implemented on the Evaluation Board (see **Section 5.4 “Notes on the Evaluation Board”**).

The RF output appears on pin 12 after the CSAC is powered ON and is always present, regardless of the lock status. When the CSAC is out of lock (BITE = 1, status ≠ 0), the output frequency is provided by the free-running TCXO. Typically, the unlocked frequency accuracy during acquisition is significantly better than this ( $<1 \times 10^{-8}$ ) as the CSAC memorizes its last-known-good tuning voltage and restores this voltage upon power-up and/or subsequent recovery from loss-of-lock.

## 2.5 WHAT TO EXPECT DURING FIRST POWER-UP

The CSAC output frequency is calibrated prior to shipment. However, the shipment conditions may affect the absolute frequency offset when received by the end-user due to temperature excursions, vibration, duration of transit, and so on. As such, some frequency offset should be expected when the CSAC is first powered on by the user. Offsets may be corrected, as explained in **Section 2.6 “Frequency Steering”**.

## 2.6 FREQUENCY STEERING

**Note:** CSACdemo is a graphical interface provided for convenient communication and evaluation of CSAC. To display the functionality of CSAC, screen shots of CSACdemo are included in the sections that follow. For more information on CSACdemo, see **Section 4.6 “CSACdemo operation”**.

For external steering and/or calibration, the CSAC internal microwave synthesizer may be adjusted by the user through the !F command (see **Section 3.3.2 “Frequency Adjustment (F)”**). Steering values are entered in (integer) units of  $1 \times 10^{-15}$ , though the resolution realized by the CSAC hardware is approximately  $1 \times 10^{-12}$ . Steering commands may be entered as either absolute steers (!FA) or as relative steers (!FD). In the case of an absolute steer, the contents of the steer register are replaced with the



# CSAC SA65 User's Guide

---

new value. In the case of a relative steer, the new value is summed with the existing value in the steer register. The maximum steer that can be entered in a single !FD command is  $\pm 2 \times 10^{-8}$  ( $\pm 20000000 \times 10^{-15}$ ). The maximum steer that can be entered in a single !FA command is approximately  $\pm 2 \times 10^{-6}$  ( $\pm 2000000000 \times 10^{-15}$ ). If a larger value is sent to the CSAC, the maximum allowed steer is applied.

## CAUTION

**It is recommended to limit steering commands to  $<\pm 2 \times 10^{-8}$  increments, to allow the CSAC to slowly adjust. A larger steer may cause the CSAC to unlock. Do not allow steering to accumulate beyond the stated data sheet limit.**

To overcome the software limit ( $\pm 2 \times 10^{-8}$ ) imposed by the !FD command, the frequency latch command (!FL) may be employed (for more information, see **Section 2.6.1 “Frequency Calibration”**). Ultimately, the CSAC steering capability is physically limited by the TCXO tuning voltage. An alarm will trigger when this voltage is breached.

**Note:** Steering commands may be entered during acquisition (Status  $\neq 0$ ) but will not take effect until lock is achieved.

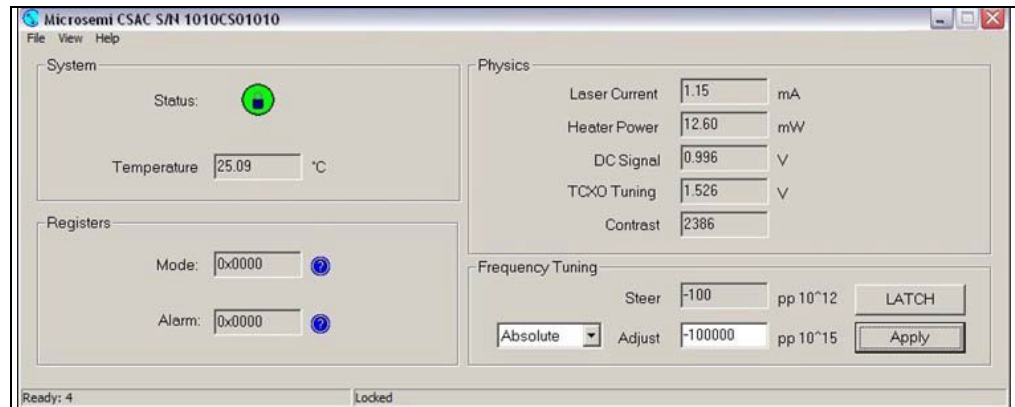
Frequency steering is volatile. Upon reboot, the CSAC returns to its nominal (calibrated) frequency setting. To update the non-volatile calibration, use the Frequency Latch command (**Section 3.3.2 “Frequency Adjustment (F)”**).

The current steering value appears in the telemetry string as `Steer`.

**Note:** Steer reports the actual hardware steering, in units of  $\times 10^{-12}$ , even though the software registers maintain resolution of  $\times 10^{-15}$ , so that many small relative corrections may be applied. As a result, the reported value may appear to disagree with the applied correction in the lowest digit due to roundoff error. An example is provided in **Section 3.3.2 “Frequency Adjustment (F)”**.

To apply a frequency correction from the main panel of CSACdemo, select relative or absolute from the pull down menu and enter the desired steering into the Adjust field in  $\times 10^{-15}$ .

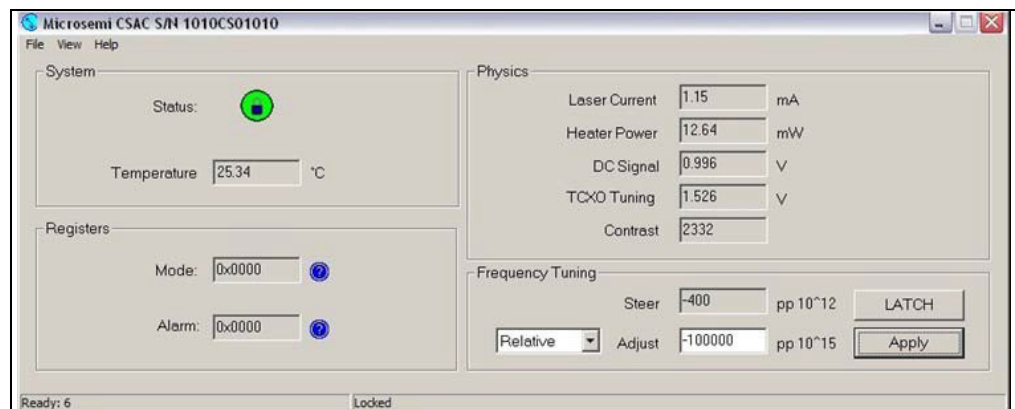
[Figure 2-3](#) shows an example where an absolute correction of  $-100000 \times 10^{-15}$  is entered. The correction is applied to the CSAC when **Apply** is selected.



**FIGURE 2-3:** Absolute Frequency Adjustment.

As shown in [Figure 2-3](#), after **Apply** is clicked, the correction is applied to the CSAC and the value of *Steer* changes (on the next polling update) to indicate the internal correction of  $-100 \times 10^{-12}$ .

[Figure 2-4](#) shows an example of relative frequency tuning after absolute steer is reset to 0. In this example, each time **Apply** is clicked, an additional correction of  $-100000 \times 10^{-15}$  is applied to the CSAC. In this screen shot, **Apply** has been clicked a total of four times. The resultant value of *Steer* is  $-400 \times 10^{-12}$ .



**FIGURE 2-4:** Relative Frequency Adjustment.

## 2.6.1 Frequency Calibration

The internal frequency calibration of the CSAC is set prior to shipment. The calibration may need to be updated from time to time to remove cumulative frequency aging offsets.

Calibration of the CSAC is a two-step process. First, the CSAC is steered onto frequency, either through an external **F** command (see [Section 2.6 “Frequency Steering”](#)), through 1PPS disciplining (see [Section 2.9 “1PPS Disciplining”](#)), or with analog tuning (see [Section 2.12 “Analog Tuning”](#)). Second, the present value of *Steer* is summed into the non-volatile calibration register through the Frequency Latch command (see [Section 3.3.2 “Frequency Adjustment \(F\)”](#)). Following a Latch command, the value of *Steer* resets to zero.

**Note:** The Latch command is only valid when the CSAC is locked (Status = 0).

To latch the current steer value to non-volatile storage from CSACdemo, click **LATCH**.

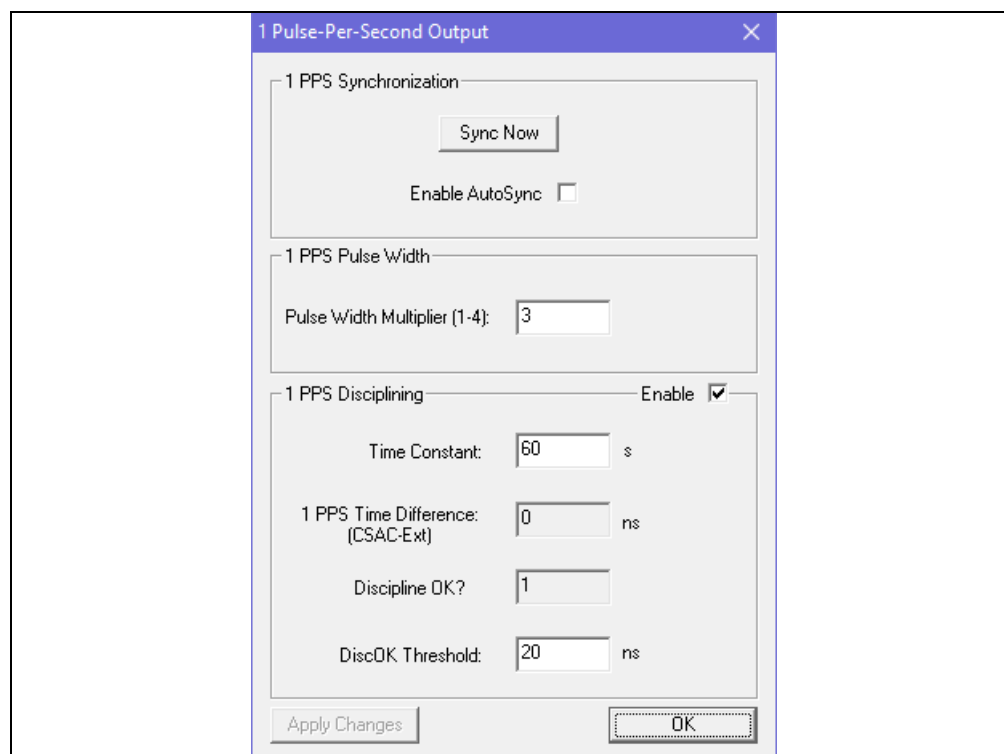
**Note:** It may be tempting, particularly in disciplining applications, to frequently latch the steering value into calibration in the event of unforeseen power outage. This is highly discouraged for the following reason. The lifetime of the CSAC's non-volatile memory is finite; updating it >20,000 times will damage it and render the CSAC inoperable.

## 2.7 1PPS OUTPUT

A CMOS level 1 pulse-per-second (1PPS) output is available on pin 10 upon power-up. The output series impedance is 200Ω. The output driver circuit is similar to that of the RF output (see [Figure 2-2](#)). Nominal levels are 0VDC to 3.3VDC. For synchronization purposes, the on-time point is the rising edge of pin 10.

The 1PPS output is derived by digital division of the RF reference frequency. The frequency stability and accuracy of the 1PPS output reflects that of the RF output. When unlocked (BITE = 1, status ≠ 0), the 1PPS stability reflects that of the free-running TCXO.

Control of the PPS output, synchronization, and disciplining is provided on the **1PPS...** panel from the **View** menu of CSACdemo. The 1PPS panel is shown in [Figure 2.5](#).



**FIGURE 2-5:** 1PPS Panel.

The 1PPS output pulse width is determined by the CSAC oscillator frequency and by the setting of PPSoutMultiplier (1-4). (see [Section 3.3.10 “Set PPSoutMultiplier \(>\)”](#)) For the 10 MHz CSAC, the output pulse width may be set from 100 μs to 400 μs in 100 μs increments. For other CSAC frequencies, consult the specific device data sheet. To adjust PPSoutMultiplier from CSACdemo, enter the new value into the **Pulse Width Multiplier** field and click **Apply Changes**.

## 2.8 1PPS SYNCHRONIZATION

The rising edge of the 1PPS output is synchronous with one rising edge of the RF output (pin 12). The 1PPS output may be synchronized with a particular cycle of the RF by applying a synchronization pulse to pin 9. When synchronized, the counters are reset such that the 1PPS output occurs on the RF rising edge, which is immediately subsequent to the externally applied rising edge. In this way, the CSAC 1PPS can be synchronized to within one clock cycle (0 ns to 100 ns) of the external reference.

The CSAC provides two modes for 1PPS synchronization, Manual and Automatic, which are selected through a bit in the mode register (see **Section 3.3.3 “Set/Clear Operating Modes (M)”**).

**Note:** The configuration of the mode register is non-volatile (preserved across power cycles).

### 2.8.1 Manual Synchronization

In Manual Synchronization mode (default), the CSAC ignores any signal present on the 1PPS input line (pin 9) until commanded. When a synchronization command is received (see **Section 3.3.4 “1PPS Synchronization (S)”**), the CSAC 1PPS is synchronized to the next rising edge to appear on pin 9.

This mode is applicable to configurations where the CSAC is embedded in a system where a 1PPS signal is always present, but not always reliably accurate or stable (such as a GPS receiver). The host microprocessor may command the CSAC to synchronize after it has verified the state-of-health of the 1PPS reference source (for example, after querying lock state of a GPS receiver).

To manually synchronize the CSAC from CSACdemo, make sure that a valid 1PPS reference is connected to the 1PPS reference input and click **Sync Now** on the 1PPS panel ([Figure 2-5](#)). The CSAC synchronizes to the next rising edge detected on the 1PPS reference.

### 2.8.2 Automatic Synchronization

In Automatic Synchronization mode, the CSAC synchronizes its 1PPS output to every rising edge that appears on pin 9. In this mode, synchronization may be performed by connecting a reference 1PPS signal to pin 9 without needing to issue the synchronization command. Automatic synchronization can be enabled/disabled through bit 3 (0x0008) in the mode register (see **Section 3.3.3 “Set/Clear Operating Modes (M)”**).

This mode can be useful, for example, in cases where the host system does not communicate with the CSAC and uses gating of the PPS to indicate validity.

**Note:** Automatic Synchronization mode and Disciplining mode (see **Section 2.9 “1PPS Disciplining”**) are mutually exclusive. Enabling either in the mode register disables the other.

To enable Automatic Synchronization from CSACdemo, select the **Enable Autosync** checkbox on the 1PPS panel and click **Apply Changes** (see [Figure 2-5](#)).

## 2.9 1PPS DISCIPLINING

A high-resolution time-interval counter (TIC) is implemented within the CSAC for improved synchronization (<100 ns) as well as for frequency calibration of the CSAC. The TIC measures the time difference between the internal CSAC 1PPS (pin 10) and

# CSAC SA65 User's Guide

---

the externally applied reference 1PPS (pin 9). The time-interval counter measures the time difference between the CSAC and the reference once per second with a resolution of approximately 500 ps.

Based on the measurements of the TIC, the disciplining algorithms adjust the CSAC's microwave synthesizer through the digital tuning value (*steer*, observed from the telemetry string). The algorithm steers the frequency so as to simultaneously discipline both the time- and frequency-error of the CSAC to that of the external reference, ultimately achieving accuracies of <5 ns and  $1 \times 10^{-12}$ , respectively. Note that, unlike the !FA and !FD commands, there is no software limitation upon the disciplined value of *steer*.

Disciplining can be enabled/disabled through bit 4 (0x0010) in the mode register (see **Section 3.3.3 “Set/Clear Operating Modes (M)”**). The time constant of the steering algorithm is user selectable through the !D command (see **Section 3.3.5 “Set 1PPS Disciplining Time Constant (D)”**).

**Note:** Both mode setting and time constant are non-volatile, that is, preserved across power cycles.

Prior to the onset of steering, the disciplining algorithms first perform an initialization sequence in which the variables of the steering algorithm are reset to defaults and a 1PPS synchronization operation (see **Section 3.3.4 “1PPS Synchronization (S)”**) is executed to bring the 1PPS output within 100 ns of the reference. Initialization is performed when Disciplining is first enabled in the mode register and, in the case where Disciplining is already enabled after the CSAC achieves frequency lock (BITE = 0, status = 0).

In the event that the 1PPS reference is removed from pin 9 while Disciplining, the CSAC remains in holdover and preserves the most recent steering value. If the 1PPS reference subsequently reappears, Disciplining continues where it left off, without reinitializing. The notable exception to this is the case in which the CSAC 1PPS has drifted significantly in time (>1  $\mu$ s) from the reference 1PPS during the outage. In this case a synchronization is performed, though the Disciplining variables are not reinitialized.

If it is necessary to force re-initialization of the disciplining variables, perhaps because the reference source is deemed untrustworthy and subsequently recovers, this can be accomplished by disabling and re-enabling Disciplining in the mode register (see **Section 3.3.3 “Set/Clear Operating Modes (M)”**).

When Disciplining is enabled, the most recent TIC measurement, rounded to the nearest nanosecond, is reported in the standard telemetry (see **Section 3.3.1 “Telemetry (6 and ^)”**). The sign of the reported value reflects the measurement of (1PPS\_EXT-1PPS\_CSAC), that is, if the CSAC 1PPS rising edge occurs after the external 1PPS rising edge, then the sign is negative.

In CSACdemo, enabling/disabling Disciplining and setting the discipline time constant are both accomplished on the 1PPS panel, accessible from the View menu (See [Figure 2-5](#)). To modify the discipline time constant, enter the new value in the field (10 to 10000) and click **Apply Changes**.

The status of Disciplining is indicated by the DiscOK parameter in the telemetry. DiscOK = 0 upon startup. DiscOK = 1 when magnitude of TIC measurement is less than a user-specified threshold (see **Section 3.3.9 “Set Threshold for DiscOK Indicator (m)”**) for two time constants of duration. DiscOK = 2 when in holdover (disciplining enabled but no 1PPS present).

**Note:** Automatic Synchronization mode (see **Section 2.8.2 “Automatic Synchronization”**) and Disciplining mode are mutually exclusive. Enabling either in the mode register disables the other.

The DiscOK indicator and DiscOKthreshold have no impact on the behavior or performance of the CSAC. DiscOK is a simple status indicator. In practice, DiscOK is frequently employed for detection of initial acquisition to an external reference. It is less useful for long-term monitoring, where intermediate excursions may exceed the long-term stability objective.

In CSACdemo, the current status of DiscOK and the DiscOKthreshold setting both appear on the 1PPS panel, accessible from the View menu (See [Figure 2-5](#)). To modify DiscOKthreshold, enter the new value (10 to 10000) in the field and click **Apply Changes**.

## 2.9.1 Cable Length Compensation

The zero point of disciplining can be adjusted to accommodate cable and other instrumentation delays (or advances) which impact the arrival time of the 1PPS at the CSAC 1PPS input pin. The compensation value can optionally be stored in the CSAC non-volatile RAM for persistent calibration.

The maximum compensation adjustment is  $\pm 100$  ns, with resolution of 100 ps. The compensation value is entered into the CSAC as a signed integer in units of 100 ps, where positive sign indicates phase advancement of the input 1PPS. For example, if there is 45 ns of delay (approximately 33 feet of RG-58 coaxial cable) between the on-time point and the CSAC 1PPS input then the compensation value would be +450.

**Note:** Cable length compensation can also be employed to correct for dynamic known errors in the 1PPS reference provided, for example, from an external measurement system. For this reason, upon application the compensation is subsequently applied to the previous 1PPS measurement.

**Note:** Compensation is implemented in the disciplining algorithm, not in the phase measurement itself. The phase measurement, as reported through telemetry, reports the actual phase measurement, that is, if the CSAC is disciplined with +50 ns of compensation, the phase meter reports -50 ns of phase error.

Compensation is set with the !DC command (see [Section 3.3.6 “Set 1PPS Disciplining Cable Length Compensation \(DC\)”](#)).

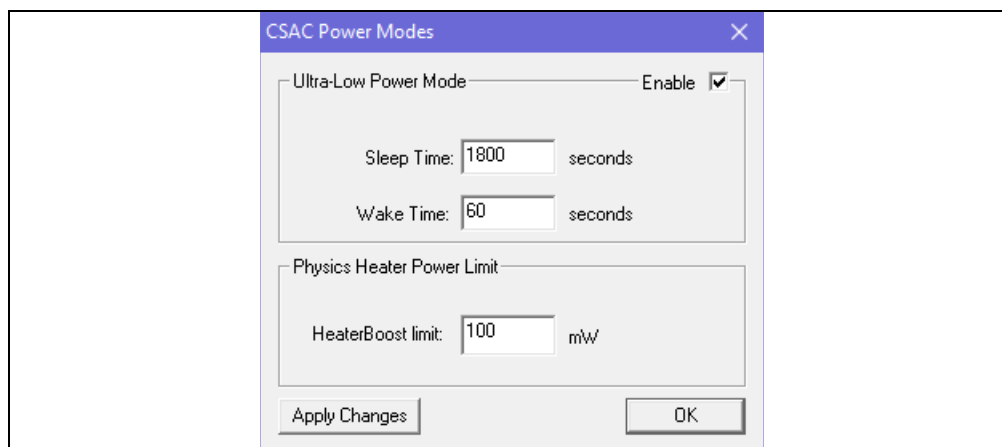
## 2.10 POWER CONTROL

CSAC time-to-lock (TTL) from cold start is limited by the need to initially warm-up the central core of the physics package which, in turn, is limited by the power supply capacity. TTL may be reduced at the expense of additional CSAC power draw during warm-up, based on the user-specified **HeaterBoostLimit**.

**HeaterBoostLimit** is a non-volatile parameter that specifies the maximum power provided by the heater control circuit. The units of **HeaterBoostLimit** are milliwatts, the limits are 50 mW to 250 mW, and the default value is 50 mW. (see [Section 3.3.11 “Set HeaterBoostLimit \(.\)”](#)).

With **HeaterBoostLimit** set to the default value of 50 mW, CSAC will meet the warm-up power specification on the data sheet. Increasing the value of **HeaterBoostLimit** will improve lock time at the expense of warm-up power, beyond the data sheet specification.

To configure **HeaterBoostLimit** using CSACdemo, select **CSAC Power Modes** from the **View** menu to access the panel shown in [Figure 2-6](#).



**FIGURE 2-6:** CSACdemo Power Modes Panel.

Enter the desired settings and click **Apply Changes** to upload new settings to the CSAC.

## 2.11 TIME-OF-DAY

The CSAC maintains time-of-day (TOD) as a 32-bit unsigned integer, which is incremented synchronously with the rising edge of the 1PPS output. Until set otherwise, TOD begins counting from zero when the CSAC is powered on.

TOD is retrieved from the CSAC with the `!T?` command (see **Section 3.3.8 “Time-of-Day (TOD)”**). When the `!T?` command is received, the CSAC waits for the next rising edge of 1PPS before replying with the TOD of the current epoch, that is, if the command is received during epoch N, then the reply N+1 appears immediately following the next 1PPS. This strategy provides the host system with minimum ambiguity in interpreting the response.

TOD can be set with the `!T` command. The `!T` command includes provision both for setting an absolute number or for a differential ( $\pm$ ) adjustment of the present TOD. An example is provided in **Section 3.3.8 “Time-of-Day (TOD)”**. To avoid ambiguity in setting the TOD, it is recommended that the host system wait for 1PPS prior to transmitting the setting/adjustment immediately thereafter.

The CSACdemo program shows TOD on the Time Of Day panel, accessed from the View menu, as shown in [Figure 2-7](#).



**FIGURE 2-7:** CSACdemo Time-of-Day Panel.



The raw CSAC TOD value is shown in the lower field of the panel (here 1260881710). The upper display of the TOD panel realizes the timekeeping convention of the C programming language (in UNIX and Microsoft Windows), which counts time in seconds from midnight on January 1, 1970. Upon clicking **Send**, it sets the CSAC time according to the host PC's TOD counter (either local time or UTC depending on the setting of the pull-down menu to the left of the **Send**). The + and - buttons for hours and seconds adjustment will increment or decrement the CSAC TOD by  $\pm 3600$  or  $\pm 1$  second respectively.

## 2.12 ANALOG TUNING

To enable analog frequency tuning for implementation in legacy (quartz crystal) applications, the frequency of the CSAC can be tuned with an external voltage applied to pin 1. This functionality can be enabled/disabled through a bit in the mode register (see **Section 3.3.3 “Set/Clear Operating Modes (M)”**). The applied voltage is digitized by an internal analog-to-digital converter and the correction is applied to the microwave synthesizer at a rate of once per second, that is, the maximum tuning rate is 1 Hz.

When analog tuning is enabled, the voltage applied at pin 1 and the resultant steering are reported in the standard telemetry stream (see **Section 3.3.1 “Telemetry (6 and ^)”**). The tuning voltage input range is 0VDC to 2.5VDC, which corresponds to a full scale tuning range of  $4.4 \times 10^{-8}$ . Nominal zero-correction tuning occurs at a tuning input voltage of 1250 mV. The fractional frequency correction, for a given applied voltage, is given by Equation 2-1.

### EQUATION 2-1:

$$\Delta f/f = (V_{\text{TUNE}} - 1250\text{mV}) \times 1.77 \times 10^{-11} / (\text{mV})$$

**Note:** This formula is accurate for a CSAC operating at 10.0 MHz output frequency. Consult the data sheet for tuning curves of CSACs at alternate frequencies. The tuning input pin is nominally biased at  $\approx 1250$  mV, that is, approximately zero correction.

**Note:** Bias voltage may vary due to component variations and/or exhibit temperature sensitivity. Therefore, analog tuning should not be enabled unless the functionality is necessary and the analog tuning input pin is connected to a low noise, low impedance voltage source. For non-legacy applications, it is recommended that this feature remain disabled, and that corrections be applied through the digital communications interface (see **Section 2.6 “Frequency Steering”**) to avoid degradation of the CSAC short-term stability due to voltage noise applied to the tuning pin.

Analog tuning can be enabled/disabled and monitored from the CSACdemo application from the **Analog Tuning...** panel (accessible from the View menu), as shown in [Figure 2-8](#).





**FIGURE 2-8:** CSACdemo Analog Tuning Panel.

When analog tuning is enabled, the voltage present on pin 1 is displayed in the Analog Tuning field and also reflected in the current reported value of steer on the main panel. To enable or disable analog tuning, select the **Enable Analog Tuning** checkbox and click **Apply Changes**.

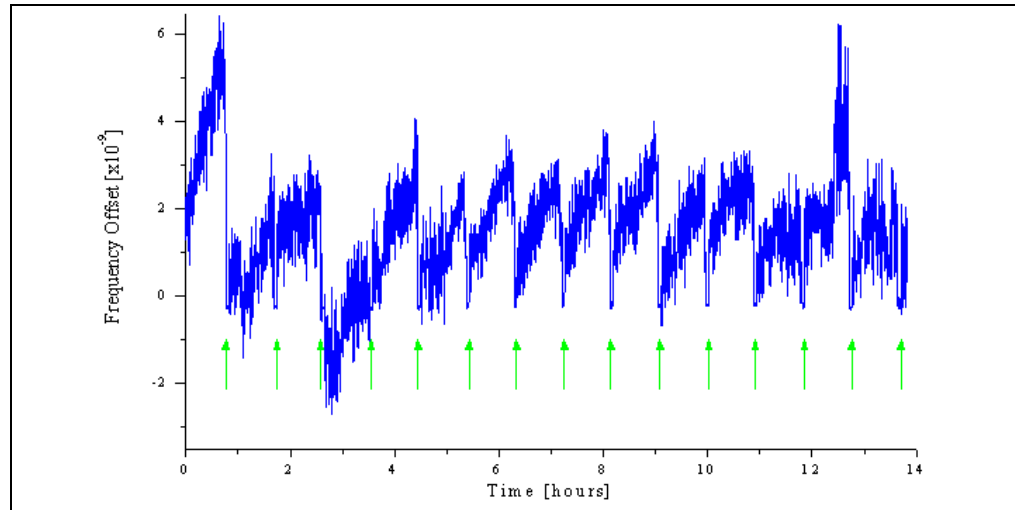
## 2.13 ULTRA-LOW POWER OPERATING MODE

The majority of the power in the CSAC is consumed by the physics package and microwave synthesizer. In ultra-low power (ULP) mode, the physics package and synthesizer can be disabled for a user-specified length of time, during which the CSAC operates as a free-running TCXO. Periodically, the atomic clock portion of the CSAC is powered on (again for a user-specified amount of time) and the TCXO is re-calibrated to the atomic frequency. Operating in this mode, the CSAC exhibits the short-term performance of a TCXO and the long-term performance of the atomic clock at significantly lower power compared to standard mode. For example, if the atomic clock portion is only powered on for 5 minutes out of every hour (2 minutes for lock acquisition + 3 minutes of run time), then the time-averaged power of the CSAC may be <30 mW.

Between calibration cycles, the CSAC in ULP mode exhibits the performance characteristics of a free-running TCXO and therefore exhibits significantly higher short-term frequency drift and environmental (temperature and vibration) sensitivity than a normally operating CSAC. ULP mode is principally recommended only for applications that require long-term, rather than short-term, frequency or time stability.

**Note:** Due to the unique behavior and configurability of ULP, the data sheet performance specifications for the CSAC cannot be guaranteed while in ULP mode. The CSAC has short-term drift performance of a low-power TCXO. Contact Microchip for additional assistance in evaluating and optimizing ULP for your specific application.

The following illustration shows an example of a CSAC operating in ULP mode, with wake-time = 300 seconds (5 min.) and sleep-time = 3300 seconds (55 min.).



**FIGURE 2-9:** *Frequency Record of CSAC in ULP Mode.*

The green arrows indicate the full-power calibrations. Note the relatively poor TCXO drift and temperature behavior between calibrations.

ULP is an unusual operating mode for an atomic clock and it is important for the user to understand how the clock is behaving to effectively implement this feature in a system. In particular, note the following:

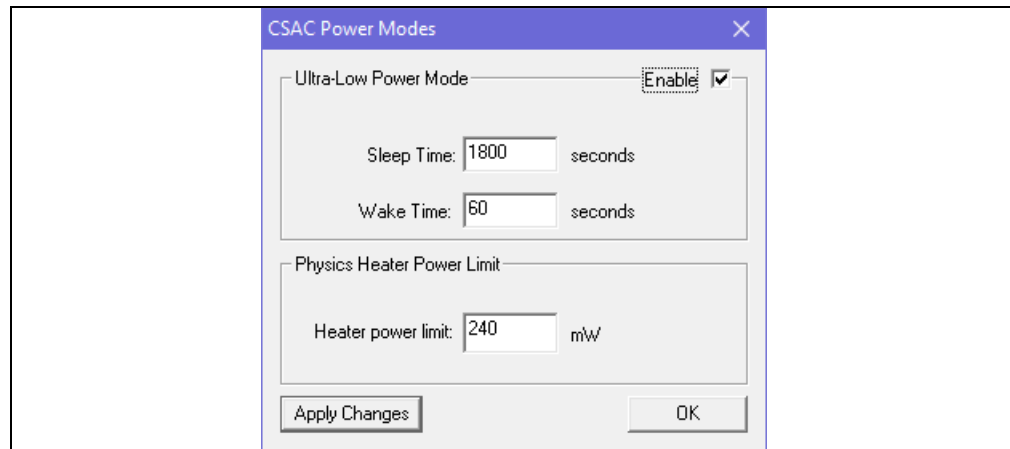
- When operating in ULP mode, the Status register indicates Status = 9 (asleep) when the atomic clock portion of the CSAC is asleep. Each wake cycle is indicated by the usual lock process (Status = 8, 7, 6,...) followed by wake-time seconds of operation at Status = 0 before the cycle repeats. This cycle is also reflected on the BITE pin, which is 1 (high) whenever the CSAC is unlocked (or asleep) and only 0 (low) during the locked periods.
- When using Disciplining (see **Section 2.9 “1PPS Disciplining”**) in conjunction with ULP, disciplining functionality is disabled during sleep and unlocked cycles, though steering information is preserved and updated across wake cycles.
- Frequency Steering commands may be entered when the CSAC is asleep or unlocked but do not affect the output frequency until lock is achieved, typically on the next wake cycle (see **Section 2.6 “Frequency Steering”**). Also, the Latch command is only valid when the CSAC is locked (Status = 0).
- If enabled, Analog Tuning (see **Section 2.12 “Analog Tuning”**) is only active when the CSAC is awake and the CSAC is locked (Status = 0).

ULP is enabled through bit 5 (0x0020) in the mode register (see **Section 3.3.3 “Set/Clear Operating Modes (M)”**). Sleep-time and wake-time intervals are set by the !U command (see **Section 3.3.7 “Set Ultra-Low Power Mode Parameters (U)”**). These values are non-volatile; they persist across power cycles. Note that the wake-time begins counting after the CSAC achieves lock, so the actual time that the atomic clock portion of the CSAC is powered on is the sum of the time to lock and the user-configured wake-time. The minimum allowed values of wake-time and sleep-time are 10 seconds and 1800 seconds, respectively.

To configure ULP parameters using CSACdemo, select **CSAC Power Modes** from the **View** menu to access the panel shown in [Figure 2-10](#).

# CSAC SA65 User's Guide

---



**FIGURE 2-10:** CSACdemo Ultra-Low Power Mode Configuration Panel.

Enter the desired settings and click **Apply Changes** to upload new settings to the CSAC.

---

---

## Chapter 3. Programmer's Reference

---

---

Pins 5 and 6 provide a serial interface for communication with the CSAC. The protocol is fundamentally similar to RS-232, with the exception that the voltage levels are CMOS (0V to  $V_{CC}$ ), rather than  $\pm 12V$ .

The serial communication parameters are as follows: (57600-8-N-1)

- 57,600 Baud
- 8 data bits
- No parity
- 1 stop bit
- No flow control

For interfacing with a standard RS-232 controller interface, which requires  $\pm 12V$  logic levels, an external level shifter must be employed, such as the Maxim MAX202 employed on the evaluation board (see **Section 5.4 “Notes on the Evaluation Board”**).

### 3.1 OVERVIEW OF TELEMETRY INTERFACE

The CSAC communicates exclusively with printable (non-binary) ASCII characters.

In general, commands are to be preceded by an exclamation point (!) and followed by a carriage-return /linefeed [CRLF] pair (ASCII 0x0D 0x0A). For convenience and efficiency, most commands also provide a single-character shortcut, which is executed immediately, that is without bracketing by ! and [CRLF]. For example, the single character shortcut ^ is functionally identical to !^[CRLF].

After transmitting ! but prior to sending [CRLF], a command may be aborted by sending the escape character (ASCII 0x1B).

All commands produce a response from the CSAC, which are human readable, with individual lines ending in [CRLF]. If an unsupported or improperly formatted command is received, the CSAC responds with ?[CRLF].

#### 3.1.1 Checksum (Error-Checking Option for Telemetry Interface Communications)

For improved communications reliability, an NMEA-style checksum may be enabled through bit 6 (0x0040) of the mode register (see **Section 3.3.3 “Set/Clear Operating Modes (M)”**). When enabled, the checksum is required for all input commands and is present on all replies from the CSAC.

The checksum is a two-byte ASCII representation (in hexadecimal) of the XOR of all characters in the command between—but not including—the ! and the [CRLF] characters. The checksum is preceded by a \* character and appended to the command immediately prior to the [CRLF]. Because commands including checksum are inherently multi-character, single-character shortcuts are not available when checksum is enabled.

Example (enable analog tuning through mode register):

Command: !MA\*0C [CRLF]

Unit response: 0x0041\*4D [CRLF]

# CSAC SA65 User's Guide

Example (disable checksum through mode register)

Command: !Mc\*2E [CRLF]

Unit response: 0x0000 [CRLF]

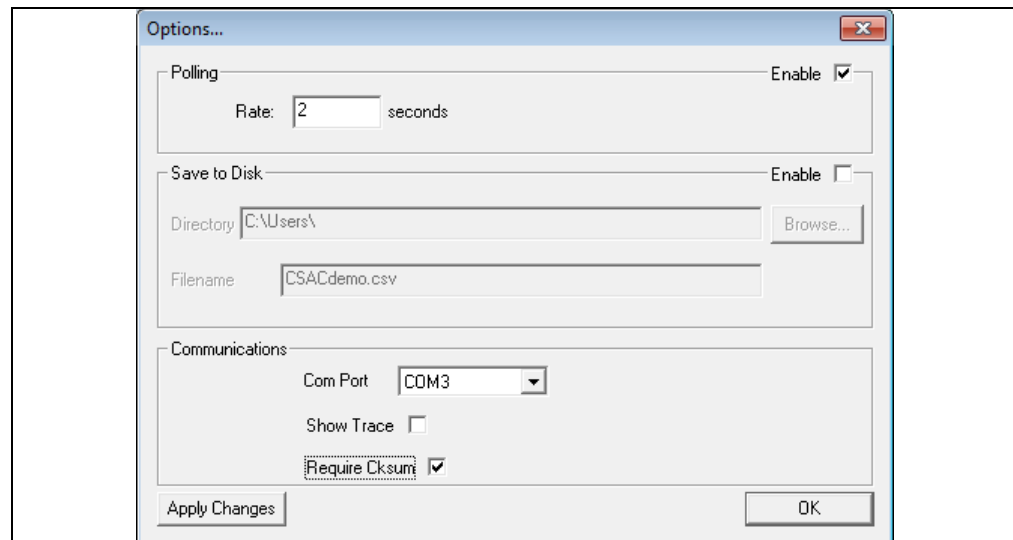
If the checksum is not present or if the checksum value is invalid, then the command is not executed and the CSAC responds with \* [CRLF].

Example (malformed checksum):

Command: !Mc\*2D [CRLF]

Unit response: \* [CRLF]

To experiment with checksum in CSACdemo and observe the calculated checksums in the Trace window, select **Require Cksum** checkbox on the **Options...** panel, as shown in [Figure 3-1](#).



**FIGURE 3-1:** CSACdemo Options... Panel.

## 3.1.2 How to Calculate the Checksum

The checksum value is a two digit hexadecimal representation of the logical XOR of each character in the command (excluding “!” and “[CRLF]”). [Table 3-1](#) illustrates computation of the checksum for sending the !MA [CRLF] command. In [Table 3-1](#), M and A are converted to their binary equivalents and the XOR is computed in the bottom row. The corresponding hexadecimal value of that XOR is “C”. Hence, the command should be sent as !MA\*0C [CRLF].

**TABLE 3-1: CHECKSUM CALCULATION EXAMPLE**

Checksum Component	ASCII Character	Binary Value	Hex Value
Input Command Characters	M	1001101	—
	A	1000001	—
Logical XOR	—	0001100	C

## 3.2 COMMAND SUMMARY

Table 3-2 summarizes the CSAC commands.

**TABLE 3-2: COMMAND SUMMARY**

Shortcut	Description	Command	Reference Section
6	Return telemetry headers as comma-delimited string.	!6 [CRLF]	Section 3.3.1 “Telemetry (6 and ^)”
^	Return telemetry as comma-delimited string.	!^ [CRLF]	Section 3.3.1 “Telemetry (6 and ^)”
F	Set/report frequency adjustment.	!F? [CRLF]	Section 3.3.2 “Frequency Adjustment (F)”
M	Set/report operating mode register bits.	!M? [CRLF]	Section 3.3.3 “Set/Clear Operating Modes (M)”
S	Sync CSAC 1PPS to external 1PPS.	!S [CRLF]	Section 3.3.4 “1PPS Synchronization (S)”
D	Set/report 1PPS disciplining time constant.	!D? [CRLF]	Section 3.3.5 “Set 1PPS Disciplining Time Constant (D)”
U	Set/report ultra-low power mode parameters.	!U? [CRLF]	Section 3.3.7 “Set Ultra-Low Power Mode Parameters (U)”
T	Set/report time-of-day.	!T? [CRLF]	Section 3.3.8 “Time-of-Day (TOD)”
m	Set/report DiscOKthreshold.	!m? [CRLF]	Section 3.3.9 “Set Threshold for DiscOK Indicator (m)”
>	Set/report PPSoutMultiplier.	!>? [CRLF]	Section 3.3.10 “Set PPSoutMultiplier (>)”
.	Set/report HeaterBoostLimit	!.? [CRLF]	Section 3.3.11 “Set Heater-BoostLimit (.)”
p	Report Part Number	!p? [CRLF]	Section 3.3.12 “Report Part Number (p)”
?	Help.	!? [CRLF]	Section 3.3.13 “Help (?)”

## 3.3 DETAILED COMMAND DESCRIPTIONS

The following are descriptions of the CSAC's commands.

### 3.3.1 Telemetry (6 and ^)

CSAC supports two commands, !6 and !^, to retrieve the telemetry headers and values, respectively. Both responses are comma-delimited strings, suitable for importing into spreadsheet programs.

Example:

Telemetry headers command: !6 [CRLF]

Unit response: Status, Alarm, SN, Mode, Contrast, LaserI, TCXO, HeatP, Sig, Temp, Steer, ATune, Phase, DiscOK, TOD, LTime, Ver [CRLF]

Example:

Telemetry data command: !^ [CRLF]

# CSAC SA65 User's Guide

Unit response:

0, 0x0000, 1209CS00909, 0x0010, 4381, 0.86, 1.573, 17.62, 0.996, 28.26, -24, ---, -1, 1, 1268126502, 586969, 1.0 [CRLF]

The maximum length of a telemetry string is 135 characters.

**Note:** The single-characters 6 and ^ are shortcuts for !6 [CRLF] and !^ [CRLF], respectively.

The following table lists the telemetry parameters and their associated header identifiers.

**TABLE 3-3: TELEMETRY PARAMETERS (FIRMWARE VERSION 2.0)**

Identifier	Description	Notes	String Length
Status	Unit status	See Note 1 and <a href="#">Table 3-4</a>	Up to 2 decimal digits (2 characters)
Alarm	Pending unit alarms	See Note 2 and <a href="#">Table 3-5</a>	"0x" + 4 hexadecimal digits (6 characters max)
SN	Unit serial number	See Note 3	11 characters
Mode	Mode of operation	See <a href="#">Table 3-6</a>	"0x" + 4 hexadecimal digits (6 characters max)
Contrast	Indication of signal level	Typically >1000 when locked, and ≈ 0 when unlocked	32 bits unsigned (10 characters max)
LaserI	Laser current (mA)	Typically 0.6 mA to 1.3 mA	16 bits unsigned + "." + 2 digits precision (8 characters max)
TCXO	Tuning voltage (V)	0VDC to 2.5VDC tuning range ≈ ±10 × 10 <sup>6</sup>	16 bits unsigned + "." + 3 digits precision (9 characters max)
HeatP	Physics package heater power (mW)	Typical 6 mW to 20 mW under normal operating conditions and 25°C ambient	16 bits unsigned + "." + 2 digits precision (8 characters max)
Sig	DC signal level (V)	Typical 0.8V to 1.7V under normal operating conditions	16 bits unsigned + "." + 3 digits precision (9 characters max)
Temp	Unit temperature (°C)	Absolute accuracy is ±2°C	16 bits unsigned + "." + 2 digits precision (8 characters max)
Steer	Frequency adjust	In pp10 <sup>12</sup>	32 bits signed (11 characters max)
ATune	Analog tuning voltage input	--- when analog tuning is disabled, 0V to 2.5V when enabled	16 bits unsigned + "." + 3 digits precision (9 characters max)
Phase	Difference between CSAC and external 1PPS (ns)	Only present if discipline mode enabled, otherwise --- or NEEDREFPPS	16 bits signed (6 characters max)
DiscOK	Discipline status (0-2)	0 = acquiring, 1 = locked, 2 = holdover when disciplining enabled, otherwise ---	"0", "1", "2" or "---" (3 characters max)
TOD	Time (seconds)	Starts at 0 upon power-up unless set by command	32 bits unsigned (10 characters max)
LTime	Time since lock (seconds)	Starts at 0 upon lock	31 bits unsigned (10 characters max)
FWver	Firmware version	M.m where M is major revision and m is minor revision	"2.0" (4 characters, may be longer in future firmware)

**Note 1:** Status reflects the steps of the clock initialization process. It starts at 8 on boot and decreases to 0 as acquisition proceeds. When Status ≠ 0, BITE = 1. When Status = 0, BITE = 0.

**2:** Alarms indicate detection of anomalous operating conditions while locked. Alarm is the logical OR of all pending alarms, as shown in the following table. An alarm will not persist if the condition is fixed or if the unit is reset.

**3:** CSAC serial numbers are of the form YYMMCSXXXXX where YYMM is the year and month of production and XXXXX is the serialized production unit number.

**TABLE 3-4: STATUS CODES OF CSAC**

Status	Acquisition Stage
9	Asleep (ULP mode only).
8	Initial warm-up.
7	Heater equilibration.
6	Microwave power acquisition.
5	Laser current acquisition.
4	Laser power acquisition.
3	Microwave frequency acquisition.
2	Microwave frequency stabilization.
1	Microwave frequency steering.
0	Locked.

**Note:** If CSAC returns a status code other than shown in [Table 3-4](#), then it is re-acquiring its set points. In this case, warm-up time takes longer than stated on the CSAC SA65 data sheet. To avoid this, it is recommended to always allow CSAC to remain powered on for >102 seconds after it acquires LOCK. 102 seconds is the minimum amount of time necessary to save CSAC set points to memory, thus avoiding set-point re-acquisition upon its next power up.

**TABLE 3-5: ALARM CODES**

Alarm	Definition	Alarm Limit
0x0001	Signal contrast low.	Contrast <1000
0x0002	Synthesizer tuning at limit.	Synthesizer detuned from calibration by >30 kHz or <-15 kHz
0x0004	Temperature bridge unbalanced.	Bridge—set-point $\geq \pm 20$ mV
0x0010	DC light level low.	Set-point—DCL > 0.1V
0x0020	DC light level high.	DCL—set-point > 0.1V
0x0040	Heater voltage low.	<30 mV
0x0080	Heater voltage high.	>2.48V
0x0100	$\mu$ W power control low.	<20 mV
0x0200	$\mu$ W power control high.	>2.48V
0x0400	TCXO control voltage low.	<0.1V
0x0800	TCXO control voltage high.	>2.4V
0x1000	Laser current low.	<0.5 mA
0x2000	Laser current high.	>2.3 mA
0x4000	Stack overflow (firmware error).	—

**Note 1:** Alarms indicate detection of out-of-range measurements. Alarms may appear momentarily, due to statistical variation of signals, which do not necessarily indicate performance degradation. If any alarm persists for longer than 1 second, a reboot is initiated.



## 3.3.2 Frequency Adjustment (F)

The output frequency of the CSAC may be adjusted (steered) through the communications port. The internal resolution of the fractional frequency correction is approximately  $1 \times 10^{-12}$ . The correction is entered in integer units of  $\times 10^{-15}$ . The maximum allowed correction in a single !FD command is  $\pm 20000000$  ( $2 \times 10^{-8}$ ). The maximum allowed correction in a single !FA command is approximately  $\pm 2000000000$  ( $2 \times 10^{-6}$ ). Corrections may be applied as either Absolute or Relative, depending on the first character following the !F, that is !FA or !FD for absolute or relative (delta) respectively. In the case of absolute steering, the value of the Steer register is replaced with the new value. In the case of relative (delta) steering, the new value is summed with the existing value in the Steer register, that is, two relative corrections of  $-10000$  result in a total offset of  $-2 \times 10^{-11}$ . The current steering value is reported in the steer field of the telemetry in units of  $\times 10^{-12}$ .

The format for the Adjust frequency command is !FYXXXXX[CRLF] where Y is either A or D and XXXXX is the new correction in  $\times 10^{-15}$ .

Example: Apply absolute tuning correction of  $-1.23 \times 10^{-10}$ :

Command: !FA-123000[CRLF]

Unit response: Steer = -123[CRLF]

Example: Apply delta tuning correction of  $-1.23 \times 10^{-10}$ :

Command: !FD-123000[CRLF]

Unit response: Steer = -246[CRLF]

Example: Report current value of steer:

Command: !F?[CRLF]

Unit response: Steer = -246[CRLF]

**Note:** The single-character F is a shortcut for !F?[CRLF].

The contents of the Steer register are volatile. Steer is reset to 0 when power is cycled to the CSAC. In many cases, it is desirable to preserve the steer upon power-down (for example, calibration of the CSAC). This is accomplished by sending a Frequency Latch command to the CSAC, which updates the internal calibration (stored in non-volatile memory) according to the current value of the Steer register and resets Steer to zero. Note that the Latch command is only valid when the CSAC is locked (Status = 0).

Example: Latch the current steer value:

Command: !FL[CRLF]

Unit response: Steer Latched [CRLF] Steer = 0[CRLF]

Once a Latch command is issued, the previously latched value cannot be recovered. There is no command to restore "factory defaults".

**Note:** The frequency steering command (!F) is recommended for real-time disciplining of CSACs, but the value should not be latched (!FL) on every steer due to the physical limit on the number of times the non-volatile memory may be written before damage (20,000). For example, if a !FL command is applied to the CSAC at a rate of 1/sec, the CSAC may experience operational failure within 8 hours.

### 3.3.3 Set/Clear Operating Modes (M)

Operating modes of the CSAC are enabled/disabled by individual bits in the mode register. The `!M` command provides access to set/clear each of the bits independently. The mode register is non-volatile; Settings persist across power cycles.

The unit responds by reporting the current value of the mode register in hexadecimal. Each bit in the mode register is associated with enabling/disabling a particular operating mode. The bit assignments are shown in the following table.

**TABLE 3-6: OPERATING MODES OF CSAC**

Enable Bit Assignment	Enable Arguments to !M_	Definition	Disable Argument to !M_
0x0001	A	Analog tuning.	a
0x0002	—	Reserved.	—
0x0008	S	1PPS auto-sync.	s
0x0010	D	Discipline.	d
0x0020	U	Ultra-Low Power mode.	u
0x0040	C	Require checksum.	c
0x0080	—	Reserved.	—
—	?	Report current settings.	—

Example: Enable and then Disable analog tuning:

Command: `!MA [CRLF]`

Unit response: `0x0001 [CRLF]`

Command: `!Ma [CRLF]`

Unit response: `0x0000 [CRLF]`

The current value of the mode register is returned in the standard telemetry query (see **Section 3.3.1 “Telemetry (6 and ^)”**) or may be queried independently with the `!M?` command.

Example: Query mode register:

Command: `!M? [CRLF]`

Response: `0x0001 [CRLF]`

**Note:** The single-character `M` is a shortcut for `!M? [CRLF]`.

Autosync mode and Discipline mode are mutually exclusive. Setting either Autosync or Discipline disables the other.

### 3.3.4 1PPS Synchronization (S)

To synchronize the 1PPS output (pin 10) to an externally applied 1PPS synchronization input (pin 9), connect an external 1PPS signal to pin 9 and send the `!S` command. The rising edge of the 1PPS output will synchronize to within  $\pm 100$  ns (approximately) of the next rising edge of the 1PPS input. If a valid 1PPS input does not appear at the 1PPS input within 3 seconds, the operation is aborted and an error is returned.

Example: Synchronize 1PPS:

Command: `!S [CRLF]`

Unit response: `S [CRLF]`

or: `E [CRLF]`

The unit response (S or E) occurs after either successful synchronization or 3-second timeout, respectively.

**Note:** The single-character S is a shortcut for !S [CRLF].

### 3.3.5 Set 1PPS Disciplining Time Constant (D)

The time constant for disciplining to an externally supplied 1PPS reference source may be selected to provide optimal performance in a given application (see **Section 5.1 “The Art of Disciplining”**).

The time constant can range from 10 to 10000 seconds. The 1PPS disciplining time constant is set with the !D command. The format for setting the time constant is !DX [CRLF] where X is the new time constant in seconds.

Example: Set disciplining time constant to 80 seconds:

Command: !D80 [CRLF]

Response: 80 [CRLF]

To query the current time constant setting, without modifying the value, use the command !D?

Example: Query current disciplining time constant:

Command: !D? [CRLF]

Response: 80 [CRLF]

**Note:** The single-character D is a shortcut for !D? [CRLF].

### 3.3.6 Set 1PPS Disciplining Cable Length Compensation (DC)

Cable length compensation can be applied to allow for known delay (or advance) in the arrival time of the reference 1PPS at the CSAC (see **Section 2.9.1 “Cable Length Compensation”**). Cable length compensation is represented as a signed integer in units of 100 ps, with a maximum value of  $\pm 1000$  (100 ns).

The sign of the compensation is such that a positive value reflects known delay in the arrival time of the 1PPS. For instance, 33 feet of RG-58 cable requires compensation of +45 ns.

The format for setting the cable length compensation value is !DCX [CRLF] where X is the new compensation value.

Example: Set cable length compensation to +15 nanoseconds:

Command: !DC150 [CRLF]

Response: 150 [CRLF]

To query the current compensation setting, without modifying the value, use the command !DC?

Example: Query current compensation setting:

Command: !DC? [CRLF]

Response: 150 [CRLF]

To store the current compensation setting in non-volatile RAM, use the command !DCL

Example: Latch current value of compensation to power-up default:

Command: !DCL [CRLF]

Response: Phase comp latched [CRLF]

## 3.3.7 Set Ultra-Low Power Mode Parameters (U)

**Note:** Placing the CSAC in ULP mode results in short-term drift performance of its internal TCXO.

The ultra-low power operating mode is defined by two parameters, Sleep-Time and Wake-Time, which may be set with the !U command in this format: !USSS,WWW[CRLF] where SSS is the sleep time in seconds and WWW is the wake time in seconds.

Example: Set sleep time = 55 minutes, wake time = 5 minutes:

Command: !U3300,300[CRLF]

Response: 3300,300[CRLF]

The allowed ranges of Sleep-Time and Wake-Time are 1800 seconds to 65535 seconds and 10 seconds to -65535 seconds, respectively.

To query the ULP settings without modifying their values, use the command !U?.

Example: Query current ULP settings:

Command: !U?[CRLF]

Response: 3300,300[CRLF]

**Note:** The single-character U is a shortcut for !U?[CRLF].

## 3.3.8 Time-of-Day (TOD)

TOD is maintained internally within the CSAC, represented by a single unsigned long integer value, which begins counting up from 0 when the CSAC is powered on. The TOD is synchronized with the 1PPS output. TOD is routinely transmitted in the telemetry string (see **Section 3.3.1 “Telemetry (6 and ^)”**).

TOD may be set externally with the !T command in this format: !TYXXXX[CRLF] where Y is either A for absolute setting or D for a delta adjustment of TOD and XXXX is either an unsigned integer TOD or a signed integer adjustment to the TOD.

Example: Absolute setting TOD to 1221578499:

Command: !TA1221578499[CRLF]

Unit response: TimeOfDay = 1221578499[CRLF]

Example: Retard TOD by 3600 seconds = 1 hour:

Command: !TD-3600[CRLF]

Unit response: TimeOfDay = 1221574902[CRLF]

The TOD may be reported synchronous with the 1PPS output:

Example: Retrieve TOD command:

Command: !T?[CRLF]

Unit Response: XXXX[CRLF] where XXXX is the current TOD.

**Note:** This response does not occur until the next 1PPS output pulse.

When queried with the !T? command, the first character of TOD appears on the communications port within 20 ms following the rising edge of the next 1PPS output pulse. Because this necessarily creates a delay of up to a second between sending the !T? command and receiving a response from the CSAC, the host system must allow for an RS-232 receive timeout of at least 1000 ms when anticipating a response to the !T? command. For less critical timing applications, the TOD can be somewhat ambiguously parsed from the standard telemetry string (see **Section 3.3.1 “Telemetry (6 and ^)”**).

**Note:** The single-character `T` is a shortcut for `!T? [CRLF]`.

### 3.3.9 Set Threshold for DiscOK Indicator (m)

The DiscOK field in the telemetry data indicates whether the measured PPS error has remained within +/- a user-defined threshold (DiscOKthreshold) for two intervals of the discipline time constant.

To set the DiscOKthreshold, use the command: `!mX [CRLF]` where `X` is the new DiscOKthreshold in nanoseconds. The range of DiscOKthreshold is 1 nanosecond to  $10^9$  nanoseconds, with a default of 20 nanoseconds.

Example: Set DiscOKthreshold to  $\pm 20$  nanoseconds:

Command: `!m20 [CRLF]`

Response: `20 [CRLF]`

To query the DiscOKthreshold setting, without modifying the values, use the command `!m?`.

Example: Query current DiscOKthreshold setting:

Command: `!m? [CRLF]`

Response: `20 [CRLF]`

**Note:** The single-character `m` is a shortcut for `!m? [CRLF]`.

### 3.3.10 Set PPSoutMultiplier (>)

The pulse width of the CSAC 1PPS output (pin 10) can be set to an integer times the default pulse width by using the `!>` command with this format: `!>X [CRLF]` where `X` is the unsigned integer used as a multiple of the default 1PPS Out Pulse Width to set the 1PPS Out's Pulse Width.

The allowed range of PPSoutMultiplier is from 1 to 4.

Example: Set PPSoutMultiplier to 2x multiple of default Pulse Width:

Command: `!>2 [CRLF]`

Response: `PPS Pulse Width = 2 times ~100 usec [CRLF]`

**Note:** The default pulse width is dependent on the selected frequency option for RF output (pin 12).

When RF output frequency of 10 MHz (option 001) is selected, then the 1PPS out pulse width default is 100 microseconds, while for other RF output frequency option's the 1PPS out pulse width is as specified in the data sheet.

To query the 1PPS Out Pulse Width setting, without modifying the values, use the command `!>?`.

Example: Query current 1PPS Out Pulse Width setting:

Command: `!>? [CRLF]`

Response: `PPS Pulse Width = 4 times ~100 usec [CRLF]`

**Note:** The single-character `>` is a shortcut for `!>? [CRLF]`.

### 3.3.11 Set HeaterBoostLimit (.)

The maximum power draw of the CSAC Heater control circuits may be set controlled by setting the value of HeaterBoostLimit.

The allowed range of HeaterBoostLimit is from 50 to 250. The default value is 50.

Example: Set HeaterBoostLimit to 50 mW:

Command: !.50 [CRLF]

Response: Heater power limit (mW): 50 [CRLF]

**Note:** The single-character . is a shortcut for !.? [CRLF].

### 3.3.12 Report Part Number (p)

The CSAC part number may be retrieved with the 'p' command. The stored part number is a free-form ASCII string of maximum length 15 bytes, including a NULL terminator.

Example: Retrieve Part Number:

Command: !p? [CRLF]

Response: Part Number: 000-0000-000 [CRLF]

### 3.3.13 Help (?)

The following table lists all available commands in response to the ? command.

**TABLE 3-7: UNIT RESPONSE TO HELP COMMAND (?)**

Command	Description
F-	Adjust frequency.
^-	Telemetry.
6-	Telemetry headers.
D-	Set 1PPS discipline tau.
m-	Set 1PPS discipline threshold for TIC in ns.
>-	Set 1PPS out pulse width as 1–4 times default.
S-	Sync 1PPS.
U-	Set parameters for ultra-low power mode.
M-	Change mode register.
T-	Change/report time of day.
.-	Adjust heater boost limit.
?-	Show this list.

**Note:** The single character ? is a shortcut for !? [CRLF].

# CSAC SA65 User's Guide

---

NOTES:

## Chapter 4. Developer's Kit

The CSAC Developer's Kit includes hardware and cabling to facilitate validation of performance, brass-board demonstrations, and software interface development.

### 4.1 PACKAGE CONTENTS

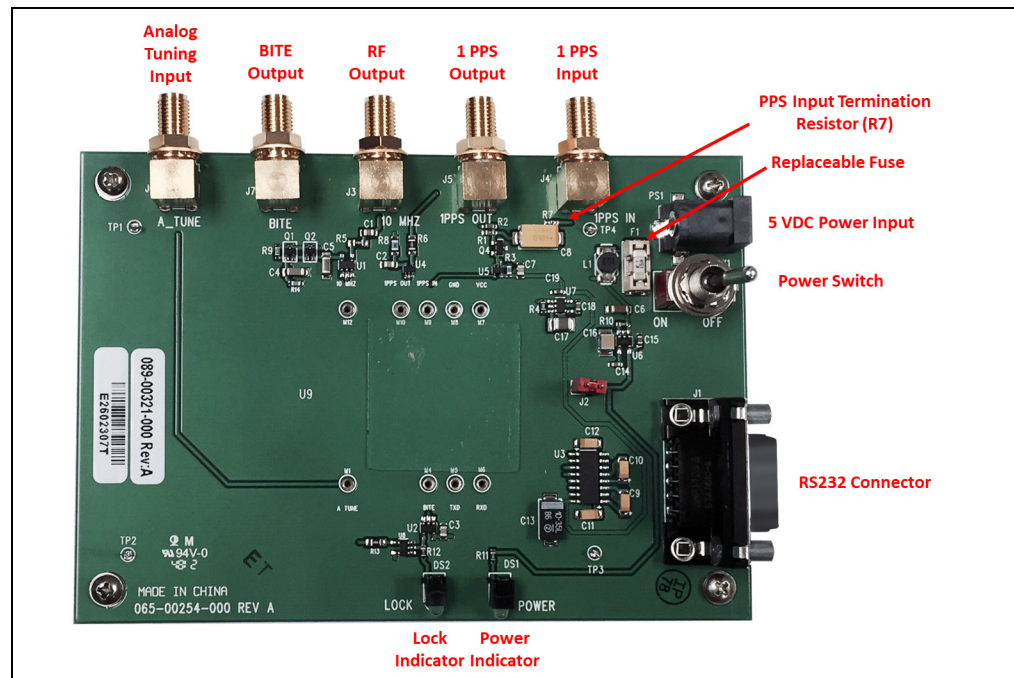
The following table lists the contents of the developer's kit (Part # 990-00123-000).

**TABLE 4-1: CONTENTS OF CSAC DEVELOPER'S KIT**

Item	Part Number	Notes
Evaluation board	054-00279-000	"Notes on the Evaluation Board" (see page 29)
Power adapter	140-00041-000	5VDC 5 mm center positive.
RS-232 cable	060-00322-000	—

### 4.2 EVALUATION BOARD OVERVIEW

Detailed schematics of the evaluation board are provided at the end of this document under **Section 5.4 "Notes on the Evaluation Board"**. The following illustration shows the connections to the evaluation board.



**FIGURE 4-1:** Evaluation Board Overview.

The following items are included in the developer's kit PCB and power supply.

- **RF Output (SMA):** The CSAC output is an RF, CMOS 0VDC to 3.3VDC waveform. A high-speed buffer (U1) on the evaluation board converts the CMOS output to an AC-coupled output capable of delivering 10 dBm to a 50Ω load.



# CSAC SA65 User's Guide

---

- **3.3VDC Jumper:** The evaluation board provides regulated 3.3VDC to the CSAC. In order to allow convenient measurement of the CSAC power consumption, a jumper is provided in the  $V_{CC}$  connection to the CSAC. To measure the CSAC current draw, turn off the evaluation board and install a low-impedance current meter in place of the jumper. Observe proper ESD protocols in making this measurement.
- **Replaceable Fuse:** Littell fuse part number 0453 01.5.
- **5VDC Input:** Input power to the evaluation board is provided on a 5 mm (center positive) coaxial connector (PS1). To avoid damage to the evaluation board, it is highly recommended to use only the power adapter provided by Microchip with the Developer's Kit.
- **RS-232 Connection (DB9M):** The evaluation board provides a level shifter (U3), which converts the CSAC 0VDC to 3.3VDC serial interface to the RS-232 standard  $\pm 12V$  for direct interface with a PC COM port. Connect the evaluation board (J1) to a PC with a standard (non-Null) DB9F-DB9F RS-232 cable. To avoid complication, use the proper cable provided by Microchip with the developer's kit.
- **Lock Indicator LED:** Indicates normal operation following initial acquisition of the clock signal. This is the logical complement of the BITE output (CSAC pin 4).
- **BITE (SMA):** This is a buffered output from pin 4 of the CSAC.
- **Power Switch:** Controls power to the evaluation board and to the CSAC.
- **Power LED:** Indicates the state of the power switch.
- **Analog Tuning Input (SMA):** This input is directly connected to pin 1 of the CSAC.
- **1PPS Input (SMA):** The 1PPS input connection to the evaluation board accepts a 1PPS reference of arbitrary amplitude (logic high:  $2V < V_{IN} < 20V$ ) and generates a 0V to 3.3V CMOS pulse to the CSAC. This input is capacitively coupled to the level-shifting circuit on the evaluation board (see [Figure 5-3](#)) and therefore the applied pulse width must be  $< 10$  ms in duration. By default, the 1PPS input is high-impedance. When driven with laboratory equipment, it is often essential to install a  $50\Omega$  resistor at location R7 on the evaluation board, or to use a  $50\Omega$  feed-through terminator at the PPS input, J7. See [Figure 4-1](#) for the location of R7 on the evaluation board.
- **1PPS Output (SMA):** The 1PPS output is buffered by a CMOS 0V to 3.3V logic gate on the evaluation board.

## 4.3 INSTALLING THE CSAC ON THE EVALUATION BOARD

### CAUTION

To avoid electrostatic discharge (ESD) damage, proper ESD handling procedures must be observed in unpacking, assembling, and testing the CSAC.

Remove the CSAC and evaluation board from their ESD protective bags only in an ESD-safe environment.

**Note:** The CSAC pinout is keyed (see [Table 1-1](#)) so the CSAC can only be inserted in the proper orientation. Gently insert the CSAC into the socket on the evaluation board.

## 4.4 CABLING

Connect the provided RS-232 cable between the evaluation board and the COM port on the PC. On laptops without an available COM port, a USB-to-RS-232 adapter, such as National Instruments USB-232, can be used.

Make sure the power switch is OFF on the evaluation board, as shown in [Figure 4-1](#). Connect the 5V power adapter between the 5V power input and a wall outlet. (Check labeling on included power supply to ensure compliance with local utility ratings.)

CSAC signal outputs are available from the evaluation board on connectors J3 (RF) and J5 (1PPS). Connect either (or both) of these to your test equipment (frequency counter, spectrum analyzer, and so on).

## 4.5 CSACdemo SOFTWARE INSTALLATION

The Microchip CSACdemo software (part number 084-00365-000) provides a convenient graphical user interface for monitoring and controlling the CSAC. CSACdemo also is used for collecting and archiving monitor data from the CSAC. It can be installed and run on any PC that runs Microsoft Windows XP, Windows 7, or Windows 10 and has at least one available RS-232 (COM) port.

**Note:** Multiple CSACs can be monitored from a single PC, provided additional COM ports are available.

The software installation is available for download from the Microchip website.

Upon accepting all of the default installation options (recommended), the CSACdemo software is installed in *C:\Program Files\Microchip\CSAC*, a startup icon is added to the **Start > All > Programs > Microchip > CSAC** menu, and a CSACdemo icon is placed on the desktop.

## 4.6 CSACdemo OPERATION

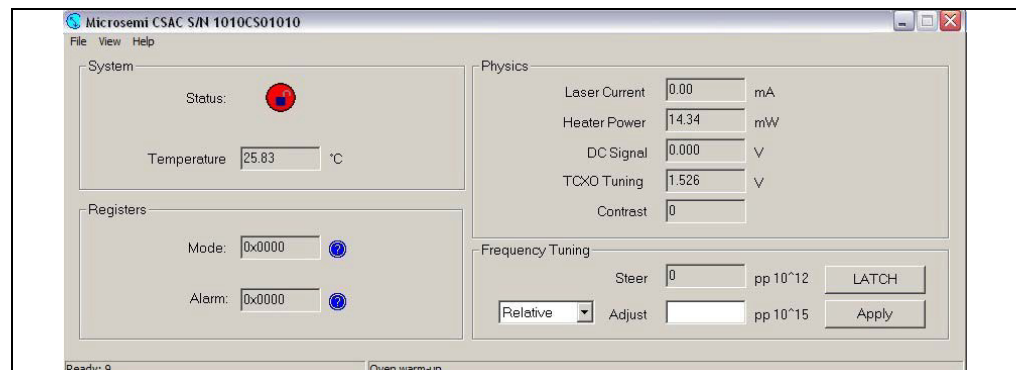
The following sections outline how to operate the CSACdemo software.

### 4.6.1 Initial Power-On

Connect power and RS-232 to the evaluation board as described in **Section 4.4 “Cabling”**. Turn on the power switch on the evaluation board. Double-click the CSACdemo icon on the connected PC.

### 4.6.2 Establishing Communications

When communications are successfully established, the CSACdemo main window appears as shown in the following screen shot.



**FIGURE 4-2:** CSACdemo Communicating with CSAC During Warm-Up.

# CSAC SA65 User's Guide

The title bar of the window indicates the unit serial number (here 1010CS01010). The main body of the window shows most of telemetry values from the unit (see **Section 3.3.1 “Telemetry (6 and ^)”**).

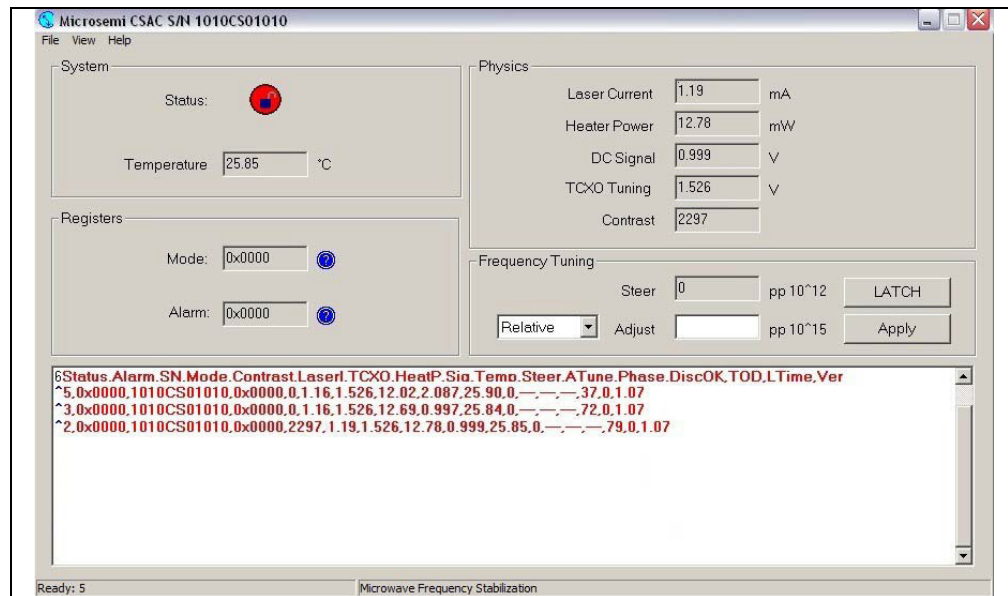
Initially, upon power-up, the status indicator reflects CSAC's unlocked condition (BITE = 1). The left field of the bottom status bar indicates the number of seconds until the next poll (here 9) and the right field indicates the unit status (here Oven Warm-up).

In the event of communication failure, the status indicator appears as a question mark in a yellow circle. In this case, check the cabling and power supply. The bottom left status bar may also indicate the source of the communication failure. If the COM port is in use by another application, the status bar reports RS-232 open failed, otherwise, it will likely indicate Instrument not responding. If you are using a PC serial port other than COM1, select **Options...** from the **File...** menu and select a different COM Port. Select the correct COM port from the pull-down menu and click **Apply Changes** to re-attempt communications.

## 4.6.3 Monitoring Communications

For development of application-specific embedded firmware for CSAC, it is helpful to observe the communications between the CSACdemo program and the CSAC. Enable the **Show Trace** checkbox in the **Communications** section of the **Options...** panel and click **Apply Changes** to view the bidirectional protocol.

With the trace visible, the CSACdemo main panel appears as shown in the following screen shot.



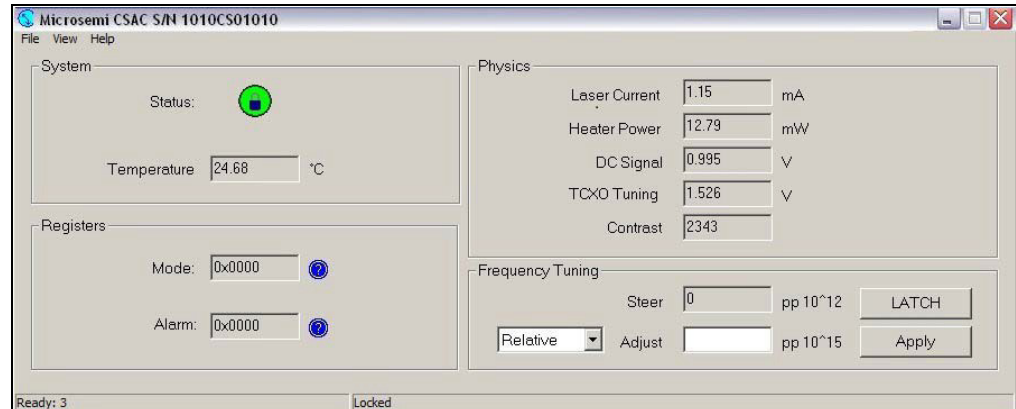
**FIGURE 4-3:** CSACdemo Main Panel with Communications Trace Visible.

**Note:** Communications from the host PC to the CSAC are shown in blue and communications from the CSAC to the host are shown in red.

## 4.6.4 Observing Acquisition

Initially, when the CSAC is powered up, the LOCK LED on the evaluation board momentarily turns on then off once again. During acquisition, the Unit Status field in the lower right corner of CSACdemo will proceed through the stages corresponding to the values of the Status register (see [Table 3-4](#)).

Acquisition takes <3 minutes in a 25°C ambient environment. When acquisition is complete, the LOCK LED on the evaluation board illuminates, the CSACdemo right hand status bar indicates Locked, and the status indicator changes from changes from an unlocked icon in a red circle to locked icon in a green circle. After locked, the main panel of CSACdemo appears as shown in the following screen shot.



**FIGURE 4-4:** CSACdemo in Locked Condition.

The previous screen shot shows typical values for a normally operating CSAC. In this case, the internal case temperature of the CSAC is 24.86°C, the operating mode is 0x0000 (see **Section 3.3.3 “Set/Clear Operating Modes (M)”**) and there are no alarms. The physics package parameters in [Figure 4-4](#) are fairly typical as well: the laser current is about 1.15 mA, the physics package heaters are drawing less than 25 mW, and the DC signal level is about 1V. The TCXO tuning is mid-range on 0V to 2.5V and the contrast is comfortably above 1000.

## 4.7 DATA ACQUISITION WITH CSACdemo

For long-term monitoring of the CSAC, select the **Options...** panel from the **File** menu (see [Figure 3-1](#)).

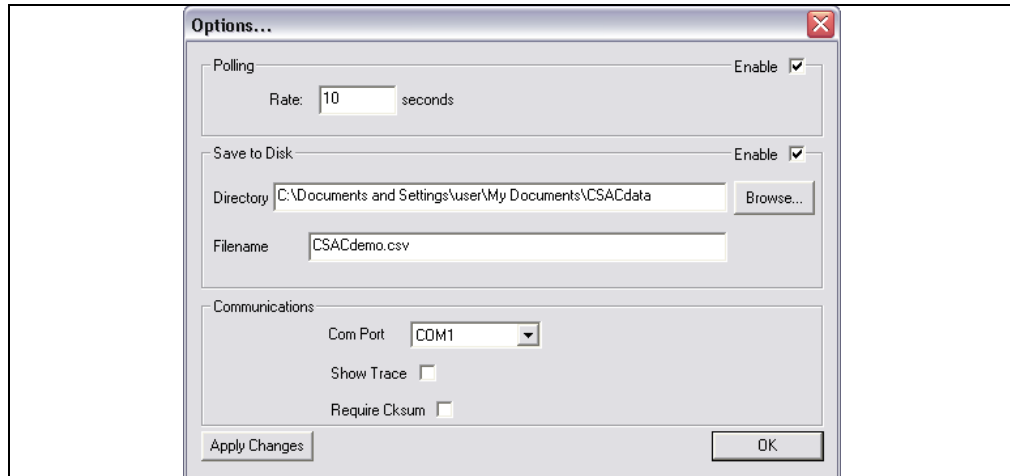
Choose a polling rate in seconds. For short-term (1 to 2 days) measurements, a polling rate of 10 seconds is optimal, and accumulates data onto disk at a rate of about 1 MB/day. For longer term measurements (30 days to 100 days), a longer polling rate, such as 60 seconds, reduces the growth of the data file to 150 kB/day.

Enable **Save to Disk** with the checkbox in the top right of the panel.

Use the **Browse...** button to select an existing Directory to archive the CSAC data.

**Note:** You must have write permission to the selected directory. Type in a **File-name** for the data.

When you are finished, the panel will look like the following screen shot.



**FIGURE 4-5:** CSACdemo Options for Datalogging to Disk.

Click **Apply Changes** to implement the new options or **OK** to discard changes and exit the panel.

The data is stored in ASCII comma-separated values (CSV) format, which allows for convenient import into most popular spreadsheet and analysis software. The first line in the file contains the column headers (see **Section 3.3.1 “Telemetry (6 and ^)”**). Subsequent lines contain the corresponding periodically polled data. The first column in the file contains time stamps, derived from the host computer's clock, in Modified Julian Date (MJD) format, referenced to universal coordinated time (UTC).

## Chapter 5. Design Guide

The following sections are the design guide for the CSAC.

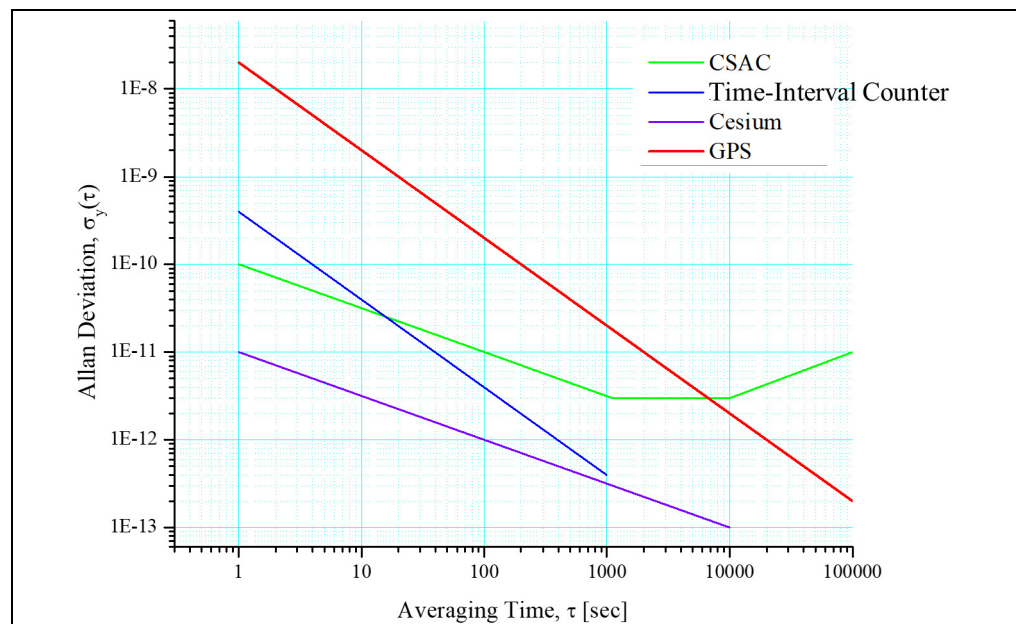
### 5.1 THE ART OF DISCIPLINING

Implemented correctly, disciplining can be utilized to calibrate the CSAC frequency in the field, even if a reference source is only occasionally or sporadically available, thereby improving the long-term performance (time and frequency drift) of the CSAC. At the same time, the disciplined CSAC may be used to clean-up the short-term stability of an accurate, but noisy, reference source, such as GPS.

Implemented incorrectly, disciplining may degrade the performance of the CSAC. For example, the CSAC disciplined with a short time constant to a source that is noisier than CSAC, such as GPS.

Implementing a successful disciplining strategy involves understanding the noise properties of the CSAC, the reference source, and the time-interval counter (TIC), and selecting the appropriate time constant that makes the best use of the available timing information.

The following graph shows typical instability (Allan Deviation) of the CSAC (in red), along with the noise floor of the phase meter (in green). Also shown are the instabilities of typical reference sources, GPS (in blue) and a high-performance cesium beam frequency standard (in purple).



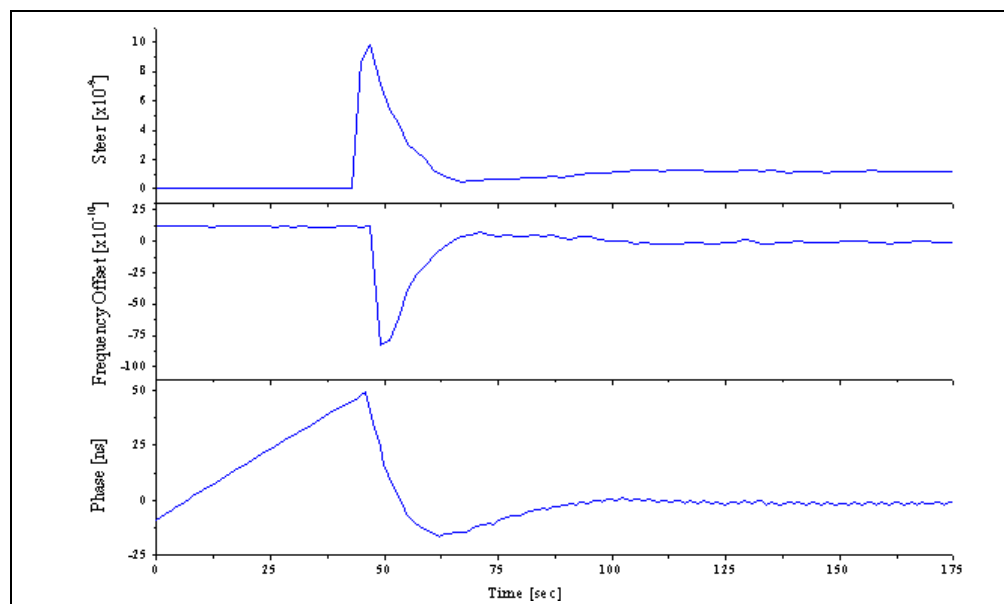
**FIGURE 5-1:** Frequency Stability (Allan Deviation) Versus Averaging Time.

When disciplining, the stability of the output of the CSAC (combined clock) at any averaging time reflects the noise properties of the dominant (most noisy) source. For example, if disciplining the CSAC to a GPS source, which is noisier than the CSAC for averaging times  $\tau < 5000$  seconds, the disciplining time constant should be set to  $\tau > 5000$  seconds so that the (superior) CSAC stability dominates for  $\tau < 5000$  seconds

# CSAC SA65 User's Guide

and the (superior) GPS stability dominates for  $\tau > 5000$  seconds. On the other hand, consider the case where the CSAC is disciplined to a high-performance cesium clock, which is more stable than the CSAC on all time scales. The noise is dominated by the TIC for  $\tau < 2$  seconds and by the CSAC for  $\tau > 2$  seconds. In this case, the disciplining time constant could be set to  $\tau = 2$  seconds for optimal performance.

The following graph shows an example of a CSAC, which is disciplined to a superior reference (in this case a hydrogen maser) with a time constant of 20 seconds. For this measurement, the CSAC was deliberately mis-tuned in both frequency ( $y$ ) and phase ( $\phi$ ) prior to the measurement, by  $y = 10 \times 10^{-10}$  and  $\phi = 50$  ns.



**FIGURE 5-2:** CSAC Disciplined to a Superior Reference.

In the previous graph, when disciplining was enabled, at  $t = 45$  seconds, the steering algorithm immediately inserted a frequency offset of  $-9 \times 10^{-9}$ , to steer out the 50 ns time error with 20 second time constant. The steering gradually reduces as the phase approaches zero such that both frequency and time error are corrected to within  $1/e$  of their initial values at one time constant (20 seconds) and  $1/e^2$  within two time constants (40 seconds). After five to six time constants ( $\approx 100$  seconds), frequency and time error are corrected to within  $\pm 5 \times 10^{-13}$  and  $\pm 5$  ns, respectively.

## 5.2 HEAT SINK

The CSAC does not require a heat sink because it consumes low power and therefore produces little heat. Furthermore, the external parts of CSAC are mu-metal (80% nickel), which is a poor thermal conductor (1/5 that of aluminum). There is no useful thermal path from the inside components to the baseplate or the cover.

## 5.3 NOTES ON SOLDERING

For initial testing and evaluation, it is recommended that the pins must not be modified or soldered to a PCB. The recommended socket for PCB attachment is Tyco P/N 4-5332070-4.

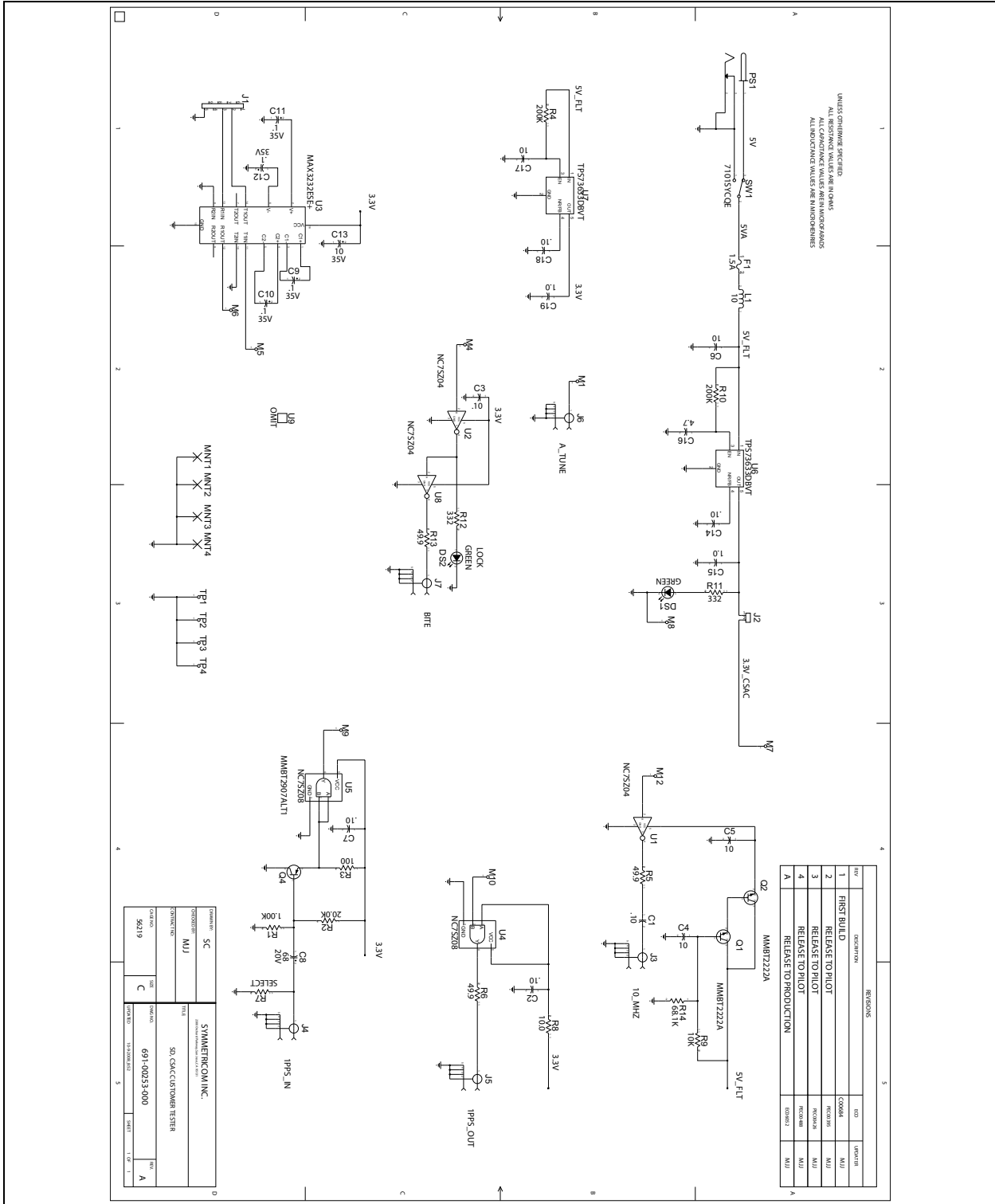
After evaluation, the pins can be hand soldered to a PCB using 63/37 tin/lead solder with a maximum soldering tip temperature of 329°C (625°F).

Hand soldering is a necessary requirement for CSAC, and solder re-flow is not recommended because the CSAC cannot go above storage temperature (it is likely to damage it).

The lead material is 52 Alloy with a plating of 50  $\mu\text{m}$  gold minimum (ASTM 8488-01) over 100  $\mu\text{m}$  nickel (QQ-N-290).

## 5.4 NOTES ON THE EVALUATION BOARD

The following illustration shows the reference schematic for the evaluation board.



**FIGURE 5-3:** Reference Schematic for Evaluation Board.



# CSAC SA65 User's Guide

---

The 1PPS input on the evaluation board is capacitively coupled to the CSAC through a common collector transistor stage and a UHS inverter. This is to protect the CSAC in the evaluation environment, from 1PPS signals >5V.

The 10 MHz output from the CSAC is buffered and capacitively coupled on the evaluation board. It also offers flexibility to condition the signal as needed by the user.

$V_{CC}$  for the UHS inverter is supplied with a resistor divider and Darlington pair to provide a good filter for removing 50 Hz to 60 Hz AC line noise. However, caution must be taken if designed into a circuit elsewhere as the output voltage may vary under higher current loads.

## 5.5 WRITES TO NVRAM

CSAC has a physical limit to the number of writes to NVRAM <20,000. To maximize the lifetime of the CSAC, restrict the number of NVRAM writes accordingly.

The following are the scenarios of a write to NVRAM:

- Issuing a Frequency Latch command (format !FL) causes an NVRAM write.
- Issuing a PPS cable length compensation latch command (format !DCL) causes an NVRAM write.
- Issuing a PPS disciplining tau set command that changes discipline tau (format !Dn where n is a decimal number) causes an NVRAM write.
- Issuing a mode command that changes mode register (format !Mx where x is an alphabetical character) in list below causes an NVRAM write:
  - Communications Checksum on/off (!MC vs !Mc)
  - PPS auto-sync on/off (!MS vs !Ms)
  - PPS disciplining on/off (!MD vs !Md)
  - Analog tuning on/off (!MA vs !Ma)
  - ULP on/off (!MU vs !Mu)
- Issuing a ULP configuration command (format !Un,p where n and p are decimal numbers) causes an NVRAM write.
- Every ULP cycle, firmware does an automatic NVRAM write.
- Issuing a HeaterBoostLimit set command that changes HeaterBoostLimit (format !.x, where x is a decimal number) causes an NVRAM write.
- Every auto-reset (status 0->8) due to alarm where status reverts from lock state, firmware does an automatic NVRAM write.
- Periodically every 30 days in clock-lock state, firmware does an automatic NVRAM write.
- Issuing a PPS pulse width set command that changes pulse width (format !>N where N is a decimal number) will cause an NVRAM write.
- Issuing a DiscOKthreshold command that changes DiscOKthreshold (format !mN where N is a decimal number) will cause an NVRAM write.
- Lock set points are saved after each acquisition of a lock state. This write occurs ~102 seconds after Lock is achieved.

NOTES:



# MICROCHIP

## Worldwide Sales and Service

### AMERICAS

**Corporate Office**  
2355 West Chandler Blvd.  
Chandler, AZ 85224-6199  
Tel: 480-792-7200  
Fax: 480-792-7277  
Technical Support:  
<http://www.microchip.com/support>  
Web Address:  
[www.microchip.com](http://www.microchip.com)

#### Atlanta

Duluth, GA  
Tel: 678-957-9614  
Fax: 678-957-1455

#### Austin, TX

Tel: 512-257-3370

#### Boston

Westborough, MA  
Tel: 774-760-0087  
Fax: 774-760-0088

#### Chicago

Itasca, IL  
Tel: 630-285-0071  
Fax: 630-285-0075

#### Dallas

Addison, TX  
Tel: 972-818-7423  
Fax: 972-818-2924

#### Detroit

Novi, MI  
Tel: 248-848-4000

#### Houston, TX

Tel: 281-894-5983

#### Indianapolis

Noblesville, IN  
Tel: 317-773-8323  
Fax: 317-773-5453  
Tel: 317-536-2380

#### Los Angeles

Mission Viejo, CA  
Tel: 949-462-9523  
Fax: 949-462-9608  
Tel: 951-273-7800

#### Raleigh, NC

Tel: 919-844-7510

#### New York, NY

Tel: 631-435-6000

#### San Jose, CA

Tel: 408-735-9110  
Tel: 408-436-4270

#### Canada - Toronto

Tel: 905-695-1980  
Fax: 905-695-2078

### ASIA/PACIFIC

**Australia - Sydney**  
Tel: 61-2-9868-6733

**China - Beijing**  
Tel: 86-10-8569-7000

**China - Chengdu**  
Tel: 86-28-8665-5511

**China - Chongqing**  
Tel: 86-23-8980-9588

**China - Dongguan**  
Tel: 86-769-8702-9880

**China - Guangzhou**  
Tel: 86-20-8755-8029

**China - Hangzhou**  
Tel: 86-571-8792-8115

**China - Hong Kong SAR**  
Tel: 852-2943-5100

**China - Nanjing**  
Tel: 86-25-8473-2460

**China - Qingdao**  
Tel: 86-532-8502-7355

**China - Shanghai**  
Tel: 86-21-3326-8000

**China - Shenyang**  
Tel: 86-24-2334-2829

**China - Shenzhen**  
Tel: 86-755-8864-2200

**China - Suzhou**  
Tel: 86-186-6233-1526

**China - Wuhan**  
Tel: 86-27-5980-5300

**China - Xian**  
Tel: 86-29-8833-7252

**China - Xiamen**  
Tel: 86-592-2388138

**China - Zhuhai**  
Tel: 86-756-3210040

### ASIA/PACIFIC

**India - Bangalore**  
Tel: 91-80-3090-4444

**India - New Delhi**  
Tel: 91-11-4160-8631

**India - Pune**  
Tel: 91-20-4121-0141

**Japan - Osaka**  
Tel: 81-6-6152-7160

**Japan - Tokyo**  
Tel: 81-3-6880-3770

**Korea - Daegu**  
Tel: 82-53-744-4301

**Korea - Seoul**  
Tel: 82-2-554-7200

**Malaysia - Kuala Lumpur**  
Tel: 60-3-7651-7906

**Malaysia - Penang**  
Tel: 60-4-227-8870

**Philippines - Manila**  
Tel: 63-2-634-9065

**Singapore**  
Tel: 65-6334-8870

**Taiwan - Hsin Chu**  
Tel: 886-3-577-8366

**Taiwan - Kaohsiung**  
Tel: 886-7-213-7830

**Taiwan - Taipei**  
Tel: 886-2-2508-8600

**Thailand - Bangkok**  
Tel: 66-2-694-1351

**Vietnam - Ho Chi Minh**  
Tel: 84-28-5448-2100

### EUROPE

**Austria - Wels**  
Tel: 43-7242-2244-39  
Fax: 43-7242-2244-393

**Denmark - Copenhagen**  
Tel: 45-4485-5910  
Fax: 45-4485-2829

**Finland - Espoo**  
Tel: 358-9-4520-820

**France - Paris**  
Tel: 33-1-69-53-63-20  
Fax: 33-1-69-30-90-79

**Germany - Garching**  
Tel: 49-8931-9700

**Germany - Haan**  
Tel: 49-2129-3766400

**Germany - Heilbronn**  
Tel: 49-7131-72400

**Germany - Karlsruhe**  
Tel: 49-721-625370

**Germany - Munich**  
Tel: 49-89-627-144-0  
Fax: 49-89-627-144-44

**Germany - Rosenheim**  
Tel: 49-8031-354-560

**Israel - Ra'anana**  
Tel: 972-9-744-7705

**Italy - Milan**  
Tel: 39-0331-742611  
Fax: 39-0331-466781

**Italy - Padova**  
Tel: 39-049-7625286

**Netherlands - Drunen**  
Tel: 31-416-690399  
Fax: 31-416-690340

**Norway - Trondheim**  
Tel: 47-7288-4388

**Poland - Warsaw**  
Tel: 48-22-3325737

**Romania - Bucharest**  
Tel: 40-21-407-87-50

**Spain - Madrid**  
Tel: 34-91-708-08-90  
Fax: 34-91-708-08-91

**Sweden - Gothenberg**  
Tel: 46-31-704-60-40

**Sweden - Stockholm**  
Tel: 46-8-5090-4654

**UK - Wokingham**  
Tel: 44-118-921-5800  
Fax: 44-118-921-5820