

# TWS V5.1

## Wireless headset

### instructions

#### Specification of Earbuds

- ① Product Name: TWS V5.1
- ② Wireless version : V5.1
- ③ Protocol: Supports HFP 1.7, HSP 1.2, AVRCP 1.6, SPP 1.2 and PBAP 1.0
- ④ Speaker Diameter : 8mm
- ⑤ Working distance: 10m-20m
- ⑥ Call Time: 5-6H (1 time full charged)
- ⑦ Play Music Time: 5-6H (1 time full charged)
- ⑧ Standby time:650H (With charger case)
- ⑨ Frequency:2402MHz~2480MHz
- ⑩ Battery type: 3.7V, >50mA Li Battery
- ⑪ Charging Time: 1-2H
- ⑫ Working Temperature: -10°-55°

#### Specification of charger case:

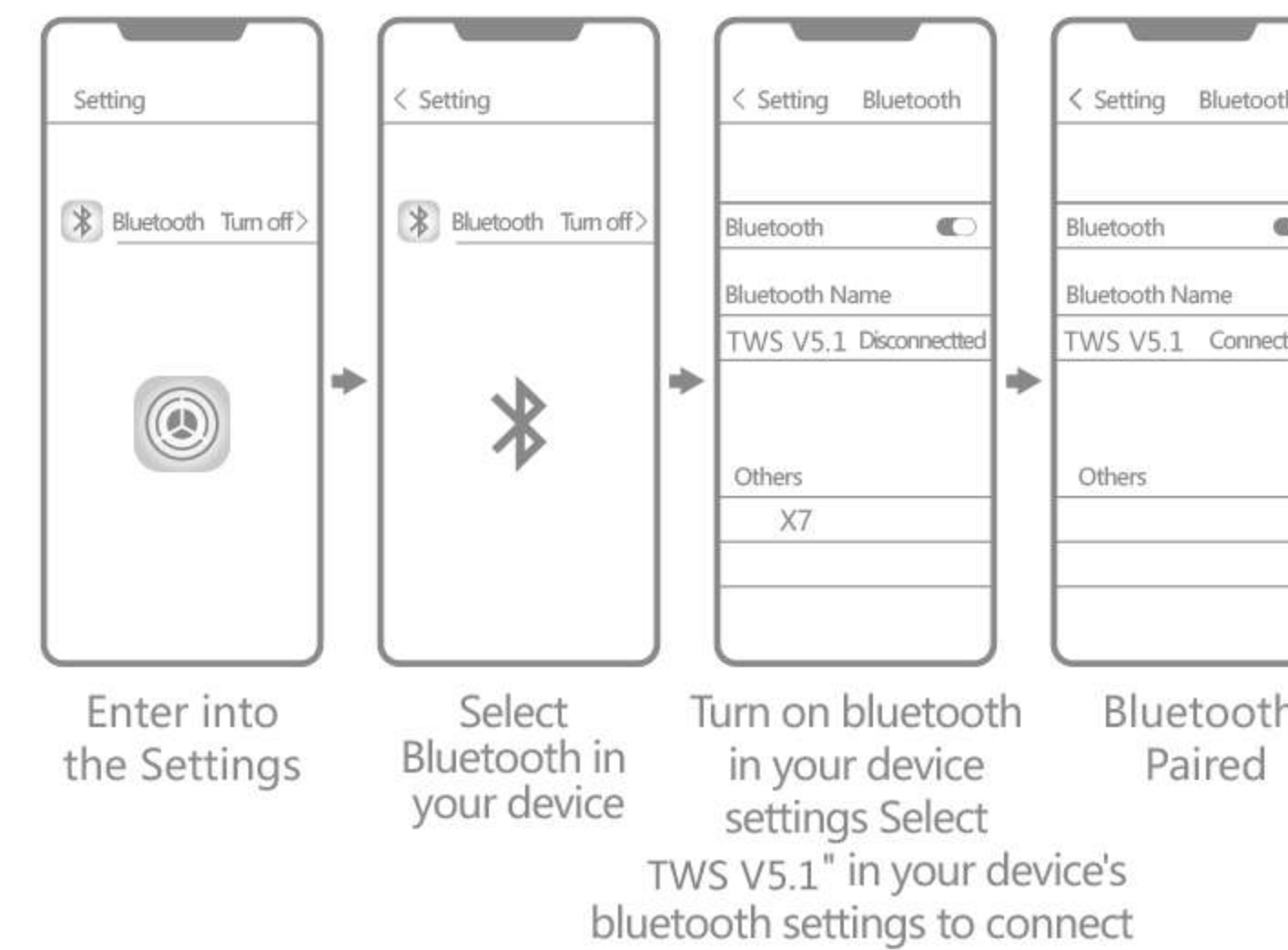
- ① Input current: 5V==1A
- ② Output current: 5V==1A
- ③ Battery type: 3.7V
- ④ Charging time:1-2H

#### How to operate the earbuds:

- ① Make sure that the charging case has electricity. If the charging compartment is out of power, please fully charge the

- charging compartment;(Pick up the two earbuds and put them back on the cover. The charging compartment indicator lights up to indicate that there is power. If it does not light, it means no power.)
- ② Take the two earbuds out of the charging case and wear them on the left and right ears respectively. The earphones will automatically turn on and automatically pair;(Voice prompt: power on, left channel, right channel, waiting for connection).
  - ③ Turn on the phone Bluetooth and click on the connection pair name "TWS V5.1" to connect (voice prompt "Connected").

#### How to pairing



#### Warming remain

For the first time to use the earbuds or for a long time to no use, please charge the charging case and earphones before, Please keep it in an unobstructed and effective environment within 10 meters. Otherwise, it may be stuck and disconnected.

#### Indicator description:

- ① **Charge the earbuds:** Put the earbuds into the charging case and cover it to charge. **earbuds indicator:** Lights up red when charging, and red light when fully charged. The charging case flashes green and the light is off after charging.
- ② **Charge the charging case:** Plug the 5V/1A USB into the charging port to charge. During charging, the middle digit of the charging stand display indicates the charging case power. When the number is displayed as "100", the battery is fully charged. **Charging case indicator light:** The charging flashes green light, and the light is off after charging.
- ③ **Charge to the mobile phone;** 3 Charge the mobile phone: Connect USB Cable to USB port of case to charge the mobile phone. **ChargingCase indicator light :** Light will turn green when charging and turn off when fully charged

In master-slave synchronous binaural mode, double-click on one of the headphones is the previous song, and double-click the other headset is the next song!

#### NEXT Songs

#### PREV Songs



The functions of volume + / - are as follows: quickly triple tap "a" for volume +, and triple click "B" for volume-

#### Volume+

#### Volume-



#### Single Earbud Mode

Version 5.1 can achieve seamless connection, master-slave synchronization, no need to distinguish the primary and secondary. At present, single ear use does not need to switch signals, only need to connect a good signal name for the first time, and then take out any earphone, can automatically complete the connection. There is no need to pair single ear connection separately. If single ear signal is connected separately, which makes it impossible to use both ears, you only need to delete one ear signal, Team up again manually once again!

#### Headset signal name

"L" Headset signal name: TWS V5.1  
"R" Headset signal name: TWS V5.1

If you can't use both ears, you just need to delete the single ear signal and manually form a team again! (team building method: turn on two headphones at the same time, double-click any one of them, wait until one of the headphones lights out, and then it is finished.)

**Special Note:**The two earbuds are well paired before packaged, but if they can not paired well due to some wrong operations, pls. do as following steps to re-pair the earbuds. Power off the two earbuds, then press the button of the two earbuds at same time and do not release for about 10s, blue lights sparkled ----> red and blue lights sparkled alternatively ----> release ----> two earbuds are in the situation of paired, and they are ready for phone searching.

**Note:** This operation also clears the team record between the phone and the earbuds, so you need to delete the Bluetooth pairing record before the phone and then search for the connection again.

#### Care and maintenance:

- ① To avoid any mis-operation caused by collision put the earbud in charging case before put in your pocket
- ② Do not use a abrasive cleaner to clean the Bluetooth earbuds.
- ③ Do not expose the Bluetooth earbuds to excessive temperature.
- ④ Do not expose the earbud under the blazing sun for a long time

- ⑤ Do not let the Bluetooth earbuds be close to the fire source.
- ⑥ Do not drop, bump, scratch, twist, tap, crush, or put into the water.
- ⑦ Keep away from magnets, appliances and speakers when using Bluetooth earbuds.
- ⑧ Do not place the Bluetooth earbuds in extreme temperature (use ambient operating temperature range -10°C-55°C)
- ⑨ Do not expose the Bluetooth earbuds to moisture.
- ⑩ If you do not use the Bluetooth earbuds for a long time, please charge it fully and charge it once a week to extend the life of the Bluetooth earbuds.

#### Safety guidance:

- ① please use the standard 5V charger (4.9-5.5V)
- ② Do not place the charging case and the Bluetooth earbuds next to the flammable explosives.
- ③ Do not disassemble the charging case and Bluetooth earbuds, or insert other items into the product to avoid damage to the product or even cause harm to you.

#### Serious warning:

Do not use this product while charging. Please use the adapter specified by the manufacturer to charge the product. Do not disassemble the built-in lithium battery. Do not let the metal contact or short the electrode. Do not touch or squeeze the battery to avoid Place in a humid or hot (>60 ° C) environment.

#### Warranty Card

Warranty certificate, please fill in and keep it safely

ProductName \_\_\_\_\_

Sales date \_\_\_\_\_

Shop \_\_\_\_\_

After sale service \_\_\_\_\_

#### Packing details:

Item Name	Quantity
Bluetooth earbuds	2 pcs
Charger case	1 pcs
User manual	1 pcs
Eartips	2 pcs
Use charger line	1 pcs