



Electric Hot Gas Bypass Valves

SDR Series

SPORLAN

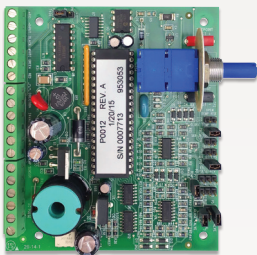


ENGINEERING YOUR SUCCESS.

Compatible Components

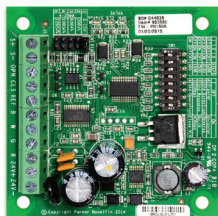
TCB Temperature Control Board

- Stand-alone single point temperature control when supplied with the optional on board temperature setpoint potentiometer.
- Interface between the Sporlan SDR valves and an external controller or building management system.
- Simplify SDR control:
 - 4-20 mA
 - 0-10 VDC
 - 5 VDC logic level command
 - 120 V AC pulse width modulating signal
- See Bulletin 100-50-1 for more information about the Temperature Control Board.



IB-G Interface Board

- Extends the functionality of an external system controller to drive up to two Sporlan step motor valves.
- Simplify SDR control:
 - 4-20 mA
 - 0-10 VDC
- See Bulletin 100-50-2.1 for more information on the IB-G Interface Board.



Electric Hot Gas Bypass Valves

SDR Series



Operation

The SDR series Electric Hot Gas Bypass valves (EHGB) modulate by the electronically controlled rotation of a step motor driving a gear train to position a pin or piston in a port. The motor is a two phase, bipolar, 12 volt DC, permanent magnet rotor style with a step angle of 3.6°. When supplied with the proper signal stream, the motor will rotate, driving a gear train to increase mechanical advantage. The output of the gear train rotates a threaded lead screw by a precise and repeatable amount. The plunger converts the rotational motion to a linear force. The pin or piston is directly connected to the plunger providing high force to both open and close the valve. A pressure balanced piston in the SDR-4 valve reduces flow induced motor load and synthetic seating materials ensure tight shutoff when the valves are closed. All materials are rated for discharge gas temperature and pressures. The valves are corrosion resistant and have copper connections for ease in installation.

Controllers

The SDR series valves all require electronic controllers to operate. The controller must be capable of:

1. Sensing a pressure or temperature
2. Calculating valve step position
3. Driving the step motor to properly achieve the desired valve position.

Many off-the-shelf controllers are available for the sensing function, but few also incorporate the algorithms and drive circuitry necessary to modulate the valve. The TCB, when supplied with the optional on board temperature setpoint potentiometer, constitutes a standalone single point temperature control for the SDR series valves. The TCB may also be used as an interface between the SDR valve and an external controller or Building Management System. When used as an interface, the TCB will accept a 4-20 milliamp, 0-10 volt DC, 5 volt DC logic level command, or a 120 volt AC Pulse Width Modulated signal. The IB series interface boards are newer versions that provide an economical alternative to the TCB when only the 0-10 volt and 4-20 milliamp inputs are required.

Whether using the TCB as an interface or as a standalone control, best results are obtained by sensing the discharge air or chilled water temperature, regardless of the physical location of the valve. In Figures 1-3, the TCB and sensor locations are illustrated. Other arrangements are possible, contact Sporlan Division, Parker Hannifin for further suggestions.

Application

Sporlan Hot Gas Bypass valves provide a precise method of compressor capacity control in place of cylinder unloaders or the handling of unloading requirements below the last step of cylinder unloading. Both mechanical and electronically controlled valves are offered by Sporlan. Mechanical valves, which open on a decrease in suction pressure, are covered in Bulletin 90-40.

Electronically controlled valves, referred to as EHGB, are generally used to directly control the temperature of the cooled medium with the use of temperature sensors and electronic controllers. They can be set to automatically maintain a desired minimum evaporating temperature regardless of the decrease in evaporator load. As a result they are ideal for close tolerance temperature applications such as environmental chambers and process cooling.

When used in air conditioning applications it is usual to limit evaporator temperature to 26°F (-3°C) or higher to prevent frost buildup. Depending on the design of the evaporator, discharge air should be limited to approximately 36°F (2°C).

System Considerations

Condensed liquid in an inactive hot gas line can create noise and vibration when the hot gas is enabled. This may be prevented in the following ways:

1. When the hot gas line is above the evaporator, the piping should be free draining toward the evaporator to prevent liquid and oil pooling in the piping.
2. If the hot gas line is below the evaporator, a reverse trap should be used to assure that the hot gas is injected from above the distributor or suction line. This will prevent the hot gas line from being filled with liquid when the hot gas is inactive.
3. The hot gas line should be insulated to prevent excessive condensation in piping, particularly if run through a cool area.

There are three common ways to apply hot gas bypass to systems. The preferred method is to inject the hot gas

into the distributor between the expansion valve and evaporator as shown in Figure 1. The second method is to inject the hot gas after the evaporator, refer to Figure 2. The final method involves bypassing the hot gas near the compressor, see Figure 3.

Bypass to Evaporator Inlet with Distributor

This method of application, illustrated in Figure 1, provides distinct advantages over the other methods, especially for unitary or field built-up units where the high and low side are close coupled. It is also applicable on systems with remote condensing units, especially when the evaporator is located below the condensing unit (See Figure 1).

The primary advantage of this method is that the EHGB can directly control the temperature of the cooled fluid. A sensor placed in the air off the evaporator or on the chilled water line of a chiller can cause the EHGB to modulate to maintain the desired setpoint temperature. In addition, the system thermostatic expansion valve will respond to the increased superheat of the vapor leaving the evaporator and will provide the liquid required for desuperheating. The evaporator serves as an excellent mixing chamber for the bypassed hot gas and the liquid-vapor mixture from the expansion valve. This ensures a dry vapor reaching the compressor suction. Oil return from the evaporator is also improved since the velocity in the evaporator is kept high by the hot gas.

Sporlan 1650R Series Distributor or ASC

To accomplish this application, two methods are available:

1. Bypass to Sporlan 1650R series distributor with an auxiliary side connection
2. Bypass to Sporlan ASC series Auxiliary Side Connector

Method 1 is normally utilized on factory assembled or unitary units where hot gas bypass is initially designed into the system. The 1650R series distributor allows the

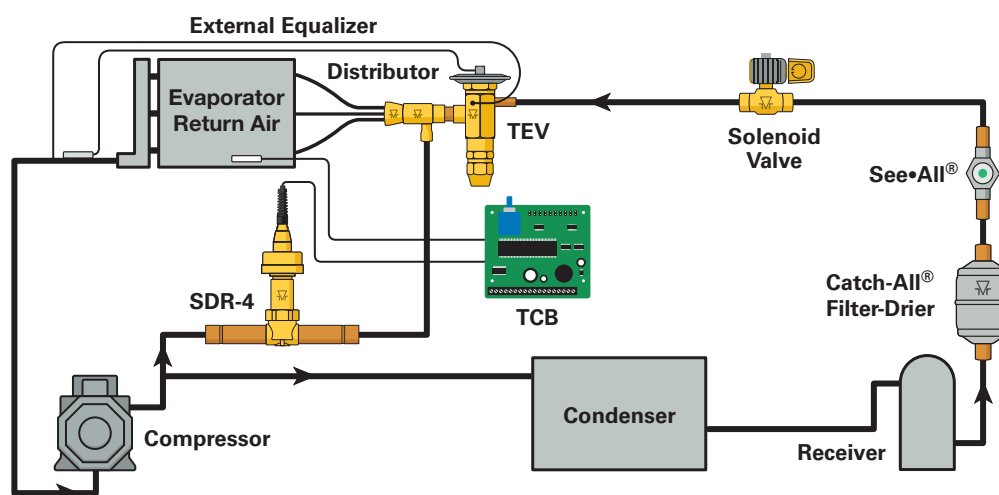


Figure 1

hot gas to enter downstream of the distributor nozzle. Method 2 is applicable on field built-up systems or on existing systems where the standard refrigerant distributor is already installed on the evaporator.

Some caution is necessary in either of these methods. If the distributor circuits are sized properly for normal cooling duty, the flow of hot gas through the circuits may cause excessive pressure drop and/or noise. Therefore, it is recommended that the distributor circuits be selected one size larger than for straight cooling duty. For complete technical details on the 1650R series distributor and the ASC series Auxiliary Side Connector, refer to Bulletin 20-10 and supplemental bulletins.

Valve / Equipment Location and Piping

When the evaporator is located below the compressor on a remote system, bypass to the evaporator inlet is still the best method of hot gas bypass to ensure good oil return to the compressor. When this is done, the bypass valve must be located at the compressor rather than at the evaporator section. This will ensure obtaining rated capacity from the bypass valve at the conditions for which it was selected. If the evaporator is above or on the same level as the compressor, this valve location will also eliminate the possibility of hot gas condensing in the long bypass line and running back into the compressor during the off cycle. Whenever hot gas bypass to the evaporator inlet is necessary for a system with two or more evaporator sections each with its own TEV (no liquid line solenoid valves) but handling the same load, two methods may be used to avoid operating interference between sections:

1. Use a separate discharge bypass valve for each evaporator section.
2. Use one discharge bypass valve to feed two bypass lines each with a check valve between the bypass valve and the evaporator section inlet. The check valves will prevent interaction between the TEVs when the bypass valve is closed.

CAUTION - introduction of hot gas between the expansion valve and a standard distributor should be avoided. The hot gas will create a higher than expected pressure

drop when flowing through distributor nozzles or throats and tubes that have been sized for liquid refrigerant flow. Careful testing must be done to assure system performance.

Bypass to Evaporator Inlet without Distributor

Many refrigeration systems and water chillers do not use refrigerant distributors but may require some method of compressor capacity control. This type of application provides the same advantages as bypassing hot gas to the evaporator inlet with a distributor. All information relating to bypassing hot gas to the evaporator inlet with a distributor, except that concerning distributors or ASCs, also applies to bypassing to the evaporator inlet without a distributor.

Bypass to Suction Line

On many applications, it may be necessary to bypass directly into the suction line. Refer to Figure 2 and 3. This is generally true of systems with multi-evaporators or remote condensing units, as well as on existing systems where it is easier to connect to the suction line than the evaporator inlet. When hot gas is bypassed directly into the suction line, the danger of overheating the compressor and trapping the oil in the evaporator exists. As the suction temperatures rise, the discharge temperature also starts to increase. This can cause breakdown of the oil and refrigerant with the possible result being a compressor burnout. This method offers added flexibility for multi-evaporator systems or remote systems because the hot gas bypass components can be located at the condensing unit. However, to ensure oil return special care must be taken in the system piping.

Desuperheating Thermostatic Expansion Valve

On those applications where the hot gas must be bypassed directly into the suction line downstream of the main expansion valve's bulb, an auxiliary thermostatic expansion

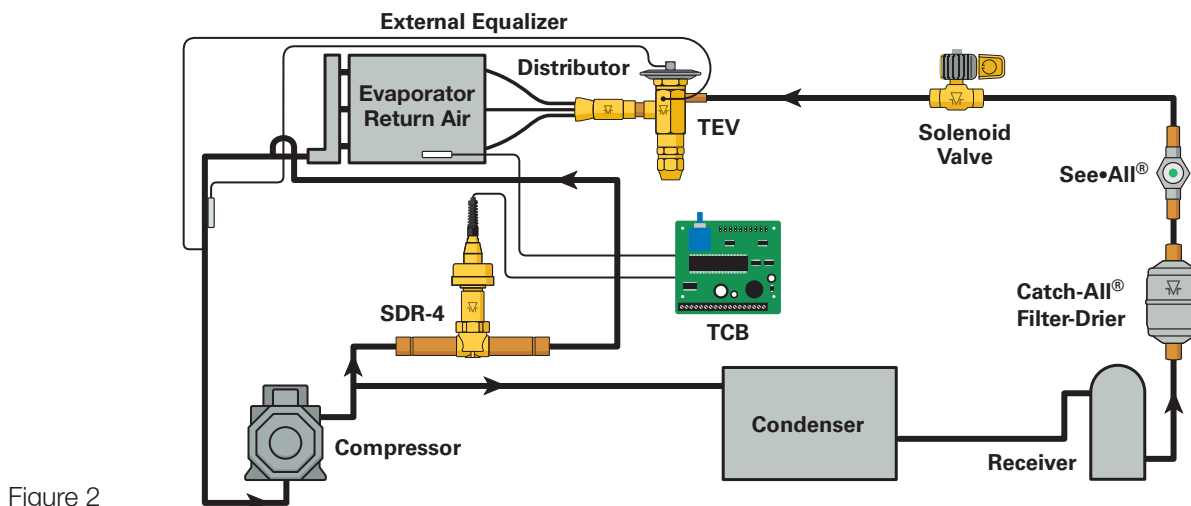
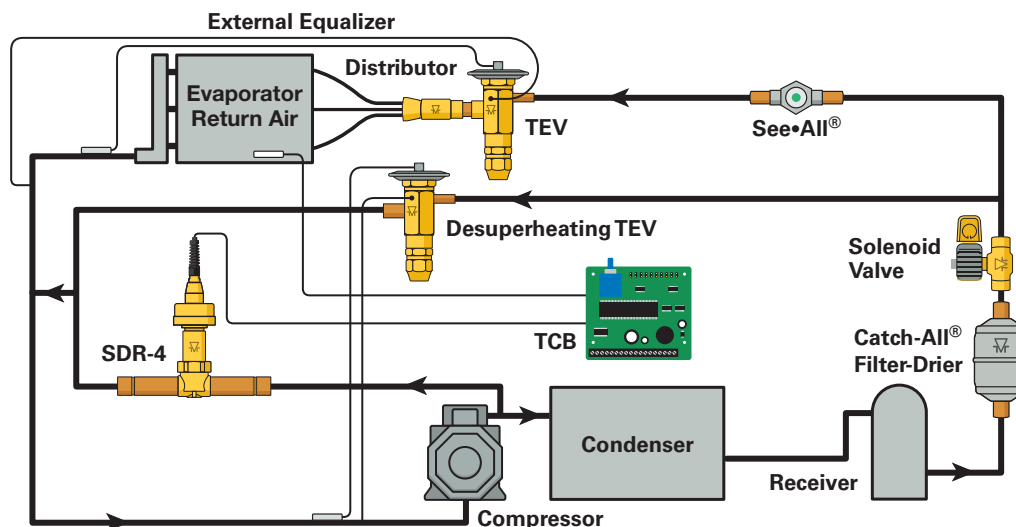


Figure 2

Figure 3



valve, commonly called a desuperheating TEV or a liquid injection valve, is required. The purpose of this valve is to supply enough liquid refrigerant to cool the hot discharge gas to the recommended suction temperature. Most compressor manufacturers specify a maximum suction gas temperature of 65°F (18°C). For these requirements, special desuperheating thermostatic charges are available which will control at the proper superheat to maintain the suction gas at or below 65°F (18°C). For applications requiring suction gas temperatures appreciably below 65°F (18°C), contact Sporlan or the compressor manufacturer for assistance. In all cases **the maximum permissible suction gas temperature published by the compressor manufacturer must be followed.** Request Bulletin 90-40 for more information.

Another, and possibly more energy efficient, method of protecting the compressor from the effects of hot suction gas is the use of the Sporlan Y1037 valve. The Y1037 Temperature Responsive Expansion Valve, or TREV, injects liquid into the suction of the compressor in response to changes in the discharge temperature of the compressor. The Y1037 is not refrigerant specific and a variety of discharge temperature setpoints are available. The compressor manufacturer should be consulted for the highest permissible discharge temperature for selection of the TREV. This system, may be more efficient than the desuperheating TEV shown in Figure 3. The TREV injects liquid only when required for purposes of limiting discharge temperature, while the desuperheating TEV injects liquid to constantly maintain a specific superheat in the suction vapor.

In instances where the suction gas may be cool enough to not need further liquid injection, the TREV will not feed, saving energy. Request Bulletin 10-10-2 for more information.

Valve / Equipment Location and Piping

As indicated earlier, the bypass valve and hot gas solenoid valve (if used) must be located as near to the compressor as possible to ensure obtaining rated capacity from the

EHGB valve at the conditions for which it was selected. On some systems with remote condensing units, the evaporator will be located below the compressor. When this is the case, serious consideration should be given to bypassing the hot gas to the evaporator inlet to keep the compressor oil from being trapped in the evaporator or suction line. Consult with the compressor manufacturer for additional application data.

One of the most important points to remember when piping the discharge bypass valve and the desuperheating thermostatic expansion valve is that good mixing must be obtained before reaching the bulb location. Otherwise, the system operation may become unstable and the thermostatic expansion valve will hunt. This mixing can be accomplished two ways: use a suction line accumulator downstream of both connections with the auxiliary thermostatic expansion valve bulb downstream of the accumulator; tee the liquid-vapor mixture from the thermostatic expansion valve and the hot gas from the bypass valve together before connecting a common line to the suction line. The latter method is illustrated in Figure 3.

Equalizing the EHGB

Unlike mechanical valves that require an equalization line to sense evaporator pressure, the EHGB valve needs no equalizer connections.

General Application Factors

While the application discussion up to this point covers the basic types of applications, several additional factors must be considered. These are discussed below as they apply to all methods illustrated in Figures 1, 2, and 3.

Paralleling Valves

If the hot gas bypass requirement on any system is greater than the capacity of the largest discharge bypass valve, these valves can be applied in parallel. The temperature settings of the paralleled valves should be the same to get the most sensitive performance. Since the TCB may only

be used with a single valve, when two valves are used in parallel for capacity, the IB should be used with an external controller because of its higher power rating.

Piping Suggestions

Figures 1, 2, and 3 are piping schematics that illustrate the general location of the hot gas bypass valves in the system. Sporlan recommends that recognized piping references, such as equipment manufacturers' literature and the ASHRAE Handbook, be consulted for assistance with this subject. Sporlan is not responsible for system design, any damage arising from faulty system design, or from misapplication of its products. If these valves are applied in any manner other than as described in this bulletin, the Sporlan warranty is void.

Actual system piping must be done to protect the compressor at all times. This includes protection against overheating, slugging with liquid refrigerant, and trapping of oil in various system locations.

The inlet connections on the discharge bypass valve should be sized to match system piping requirements. Inlet strainers are available, but not normally supplied with solder type bypass valves. Just as with any refrigerant flow control devices, the need for an inlet strainer is a function of system cleanliness. Moisture and particles too small for the strainer are harmful to the system and must also be removed. Therefore, it is recommended that a Catch-All® Filter-Drier be applied in the liquid line and, if required, in the suction line. See Bulletin 40-10.

Hot Gas Solenoid Valve

EHGBs are tight shutoff valves and systems employing them do not ordinarily need an additional hot gas solenoid valve. All step motor valves, however, will remain at their current position if power is removed during operation. In some critical systems an additional hot gas solenoid may be desirable to ensure that no hot gas is bypassed during system or power failures. When used, the hot gas solenoid valve may be wired in series with a bi-metal thermostat fastened to the discharge line close to the compressor. This causes the solenoid valve to close if the discharge line temperature becomes excessive. Complete selection information is given in the Sporlan Solenoid Bulletin 30-10.

The Need for Head Pressure Control

A discharge bypass valve can be applied on any system that experiences undesirable compressor cycling during periods of low load or for direct temperature control of any evaporator. Normally, when hot gas bypass is used for capacity control during periods of low load, outdoor ambient may be below 70°F (21°C). Therefore, all air cooled systems that utilize hot gas bypass for capacity

control should have some type of head pressure control to maintain satisfactory performance. Sporlan Bulletin 90-30 Head Pressure Control Valves has complete selection and application information.

Specifications

Sporlan Electric Hot Gas Bypass valves utilize many of the proven construction features of Sporlan step motor electric expansion valves and evaporator control valves. They are constructed of the finest materials — those best suited for the specific purpose intended for each valve component. This ensures long life and dependable service.

Selection

The selection of a hot gas bypass valve and the necessary companion devices is simplified if complete system information is available. This will result in the most economical selection because the components will match the system requirements. Besides the discharge bypass valve, a specific application may require a hot gas solenoid valve, an auxiliary side connection distributor or ASC adapter, and a desuperheating TEV with a companion liquid line solenoid valve. Once the type of application (review Application Section pages 3-6) is determined, the necessary valves can be selected from the information discussed in this section. Or one can use Parker Sporlan's web-based product selection program, Virtual Engineer, for assistance with valve selection. Visit <http://solutions.parker.com/sporlanvirtualengineer>.

The selection of a Sporlan Electric Hot Gas Bypass valve involves five basic items:

- 1. Refrigerant** – valve capacities may vary considerably for the different refrigerants.
- 2. Desired outlet fluid temperature** – depending on the system, this value must be set to prevent coil icing and/or compressor short cycling. For example, this may be 32 to 34°F (0 to 1°C) for a water chiller; 26 to 28°F (-3 to -2°C) for a normal air conditioning system; and, the freezing temperature of the specific product for a refrigeration system.
- 3. Compressor capacity (tons) at minimum allowable evaporating temperature** – consult compressor capacity ratings for this value.
- 4. Minimum evaporator load (tons) at which the system is to be operated** – most systems are *not* required to operate down to zero load but this value will depend on the type of system. For example, most air conditioning systems only operate down to 15-25% of full load. However, air conditioning systems for data processing and “white” rooms, and most refrigeration systems may be required to bypass to zero load conditions.
- 5. Condensing temperature when minimum load exists** – since the capacity ratings of the bypass valves are a function of condensing temperature, it is vital that proper head pressure is maintained,

Specifications

	SDR-1X	SDR-2	SDR-2X	SDR-3	SDR-3X	SDR-4	SDR-5
Motor Type	Permanent magnet bipolar internal (wet) motor			2 phase permanent magnet, 2 coil bipolar			
Compatible Refrigerant	All common HCFC and HFC refrigerants, including R-410A						
Compatible Oils	All common mineral, polyester, and alkybenzene oils						
Supply Voltage (L/R)	12 volts DC +/- 10%			12 DC, -5% + 10%, measured at the valve leads			
Cable Type	M-12 Cable			Hermetic non-removable			
Phase Resistance	100 Ω \pm 10%			75 Ω per winding \pm 10%			
Stepping Current	120 ma / winding			0.131 to 0.215 amps/winding; 0.262 to 0.439 amps with 2 windings energized			
Holding Current	Not recommended						
Maximum Power Input (L/R)	2.8 Watts			3.8 Watts			
Inductance Per Winding	45 +/- 20% mH			62 +/- 20% mH			
Recommended Step Rate	200 / second (L/R), up to 400 / second						
Number of Steps	1,596			3,193		6,386	
Initialization Steps	3,500			3,500		6,500	
Overdriving	Recommend one 10% overdrive closed per day (overdriving open not permitted)						
Resolution	0.00012 inches/step (0.003 mm/step)			.0000783 inches/step (.02 mm/step)			
Stroke	0.189 inches (4.8mm)			0.250 inches (6.4mm)		0.50 inches (12.7mm)	
MOPD	500 psid (34 bar)						
MRP	700 psig (48 bar)						
Fluid Temperature Range	-50°F to 240°F (-45°C to 115°C)			-40°F to 240°F (-40°C to 116°C)			
Ambient Temperature Range	-50°F to 140°F (-45°C to 60°C)			-40°F to 140°F (-40°C to 60°C)			
Max. Internal Leakage	100 cc/min @ 100 psid (6.9 bar), dry air						
Max. External Leakage	0.10 oz/yr at 300 psig (2.8gm/yr @ 20 bar)						
Relative Humidity	0-100% (condensing)						
Max. Dehydration Temperature	250°F (120°C)						
Materials of Construction	Brass, copper, stainless steel, synthetic seals			Copper - fittings; Brass - valve body, motor housing, and adaptors; Synthetic materials - seating and seals			

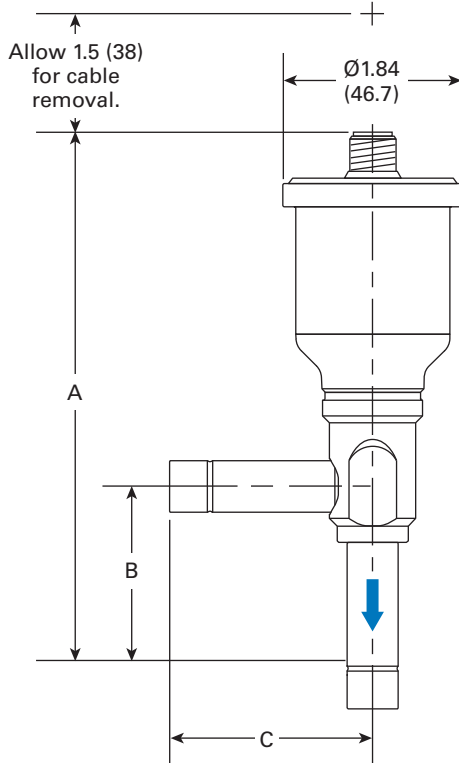
especially during low load operation. As the capacity table indicates, a condensing temperature of 80°F (27°C) is considered the minimum allowable for satisfactory systems operation. See Bulletin 90-30 for information on Sporlan's Head Pressure Control Valves.

The hot gas bypass valve must be selected to handle the difference between items 3 and 4 above. If the minimum evaporator load (item 4) is zero, the hot gas bypass requirement is simply the compressor capacity at the minimum allowable evaporating temperature (item 3). The following discussion on Capacity Ratings and the example show how these factors affect a selection on a typical air conditioning system. Capacity Ratings - As the Hot Gas Bypass Valve Capacity Tables indicate, valve ratings are dependent on the evaporating and condensing temperature at the reduced load condition and the refrigerant used. Therefore, once this information and the hot gas bypass requirement in tons (kW) is determined, a hot gas bypass valve can be selected.

Example – Select a hot gas bypass valve for a 30 ton, Refrigerant 22, air conditioning system with 67% cylinder unloading (4 of 6 cylinders unloaded). Normal operating conditions are 45°F (7°C) evaporating temperature and 120°F (49°C) condensing temperature with a minimum condensing temperature of 80°F (27°C) due to head pressure control. When the evaporator load drops below the last step of cylinder unloading, it is necessary to keep the system on the line to maintain proper space temperatures and avoid frosting of the coil. From the compressor manufacturer's capacity table, the compressor capacity in tons at the minimum allowable evaporating temperature is approximately 10 tons. If the system had to be on the line down to zero load, the bypass valve would have to bypass 10 tons of hot gas. With the necessary system factors — R-22, 26°F (-3°C) evaporating temperature at the reduced load condition, and 80°F (27°C) condensing temperature — the capacity table is checked for a valve which can handle the 10 ton requirement. The SDR-4 has sufficient capacity for this condition. Both 7/8" ODF and 1-1/8" ODF connections are available on the SDR-4 for piping convenience, and the proper size should be specified when ordering. See ordering information.

Dimensions - Inches (mm)

SDR-1X, -2, -2X

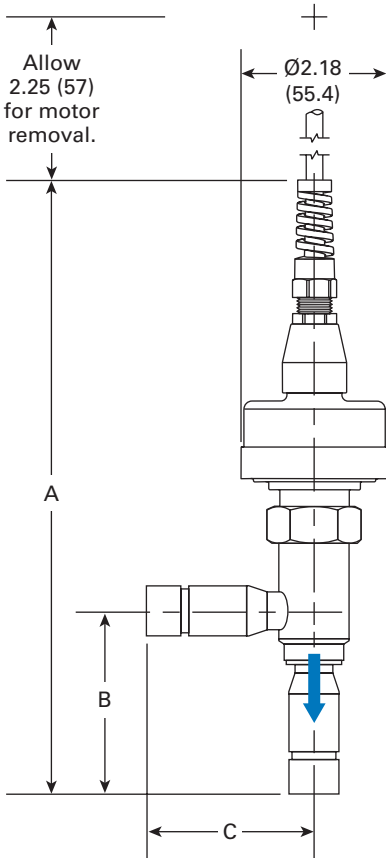


ITEM NUMBER	MODEL	DESCRIPTION	FITTING SIZE ODF – INCHES		DIMENSIONS		
			INLET	OUTLET	A	B	C
953475	SDR-1X	SDR-1X 3X3 ODF	3/8	3/8	5.23 (133)	2.00 (51)	1.74 (44)
953476		SDR-1X 4X4 ODF	1/2	1/2			
953479	SDR-2	SDR-2 3X3 ODF	3/8	3/8	5.25 (133)	2.02 (51)	1.74 (44)
953480		SDR-2 4X4 ODF	1/2	1/2			
953483	SDR-2X	SDR-2X 4X4 ODF	1/2	1/2	5.78 (147)	2.50 (64)	2.28 (58)
953484		SDR-2X 5X5 ODF	5/8	5/8			
805329		SDR-2X 7X7 ODF	7/8	7/8			

Nomenclature

S	DR	1X	4 X 4 ODF
Step Motor Operated	Discharge Regulator	Available Models 1X, 2 and 2X	Connection Size (Inlet x Outlet)

SDR-3, 3X



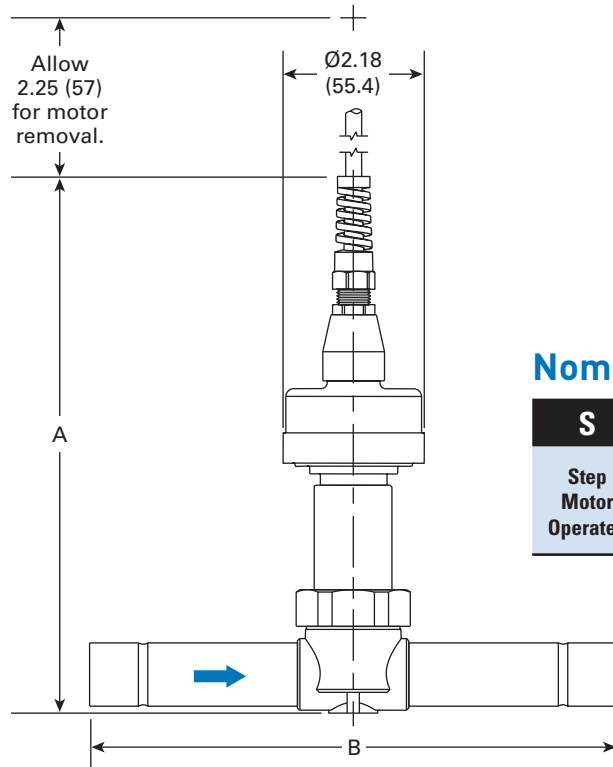
ITEM NUMBER	MODEL	DESCRIPTION	FITTING SIZE ODF – INCHES		DIMENSIONS		
			INLET	OUTLET	A	B	C
930002	SDR-3	SDR-3 3ODF 10'-S	3/8	3/8	8.63 (219)	2.59 (65.8)	2.37 (60.2)
930003		SDR-3 4ODF 10'-S	1/2	1/2			
930010		SDR-3 4ODF 20'-S	1/2	1/2			
930004		SDR-3 5ODF 10'-S	5/8	5/8			
930012		SDR-3 5ODF 20'-S	5/8	5/8			
930027	SDR-3X	SDR-3X 3ODF 10'-S	3/8	3/8	8.63 (219)	2.59 (65.8)	2.37 (60.2)
930022		SDR-3X 4ODF 10'-S	1/2	1/2			
930023		SDR-3X 5ODF 10'-S	5/8	5/8			
920026		SDR-3X 5ODF 20'-S	5/8	5/8			

Nomenclature

S	DR	3X	5 ODF	10'	S
Step Motor Operated	Discharge Regulator	Available Models 3 and 3X	Connection Size	Cable Length 10 and 20 ft.	Stripped and Tinned Cable Ends

Dimensions - Inches (mm)

SDR-4

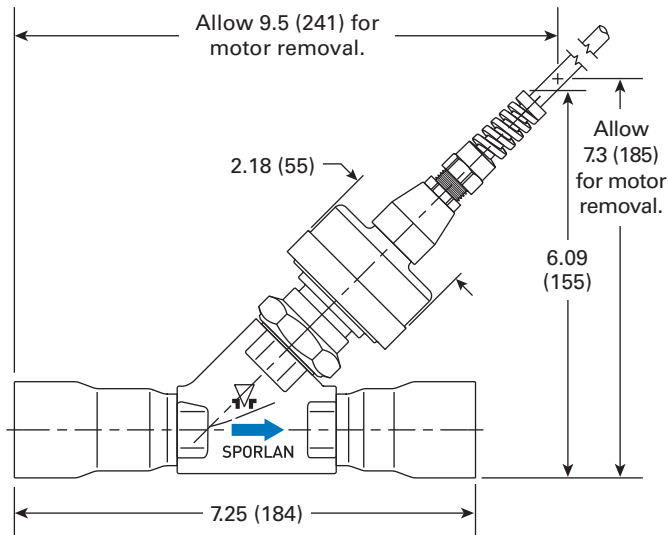


ITEM NUMBER	MODEL	DESCRIPTION	FITTING SIZE ODF – INCHES		DIMENSIONS	
			INLET	OUTLET	A	B
930000	SDR-4	SDR-4 7ODF 10'-S			8.21 (208.5)	8.08 (205)
930014		SDR-4 7ODF 20'-S	7/8	7/8		
930013		SDR-4 7ODF 40'-S				
930001		SDR-4 9ODF 10'-S	1-1/8	1-1/8		

Nomenclature

S	DR	4	7 ODF	10'	S
Step Motor Operated	Discharge Regulator	Available Model	Connection Size	Cable Length 10, 20, and 40 ft. available	Stripped and Tinned Cable Ends

SDR-5



ITEM NUMBER	MODEL	DESCRIPTION	FITTING SIZE ODF – INCHES	
			INLET	OUTLET
930035	SDR-5	SDR-5 11ODF 10'-S	1-3/8	1-3/8

Nomenclature

S	DR	5	11 ODF	10'	S
Step Motor Operated	Discharge Regulator	Available Model	Connection Size	Cable Length 10 ft.	Stripped and Tinned Cable Ends

Capacity - Tons

MINIMUM ALLOWABLE EVAPORATOR TEMPERATURE AT REDUCED LOAD °F – Tons																			
Refrigerant	Valve Model	40			26			20			0			-20			-40		
		Condensing Temperature °F																	
		80	100	120	80	100	120	80	100	120	80	100	120	80	100	120	80	100	120
22	SDR-1X	0.47	0.60	0.75	0.47	0.60	0.76	0.47	0.60	0.76	0.47	0.61	0.77	0.48	0.62	0.78	0.48	0.63	0.79
	SDR-2	1.39	1.78	2.24	1.39	1.79	2.25	1.40	1.80	2.26	1.41	1.81	2.28	1.42	1.83	2.31	1.44	1.86	2.35
	SDR-2X	2.79	3.66	4.60	2.86	3.68	4.63	2.87	3.69	4.64	2.89	3.72	4.69	2.92	3.76	4.75	2.96	3.82	4.82
	SDR-3	5.46	7.03	8.84	5.49	7.06	8.89	5.50	7.08	8.91	5.55	7.15	9.00	5.60	7.23	9.12	5.67	7.33	9.26
	SDR-3X	9.77	12.6	15.9	9.85	12.7	16.0	9.88	12.7	16.0	10.0	12.8	16.2	10.1	13.0	16.4	10.2	13.2	16.6
	SDR-4	17.9	25.0	32.9	19.5	26.4	34.1	20.0	26.8	34.5	21.4	28.1	35.8	22.3	29.0	36.8	23.0	29.9	37.8
SDR-5	49.9	64.3	80.9	50.3	64.7	81.4	50.4	64.8	81.6	50.8	65.4	82.4	51.3	66.1	83.5	51.9	67.1	84.8	
134a	SDR-1X	0.31	0.41	0.53	0.31	0.41	0.53	0.31	0.41	0.53	0.31	0.41	0.53	0.32	0.42	0.54	0.32	0.42	0.54
	SDR-2	0.92	1.22	1.57	0.92	1.22	1.57	0.93	1.22	1.57	0.93	1.23	1.58	0.94	1.24	1.60	0.95	1.25	1.61
	SDR-2X	1.89	2.50	3.22	1.90	2.51	3.23	1.90	2.51	3.23	1.91	2.53	3.25	1.93	2.54	3.28	1.94	2.57	3.32
	SDR-3	3.64	4.80	6.18	3.65	4.81	6.20	3.65	4.82	6.21	3.67	4.85	6.24	3.70	4.89	6.30	3.73	4.94	6.37
	SDR-3X	6.53	8.62	11.1	6.54	8.64	11.1	6.55	8.65	11.1	6.59	8.70	11.2	6.63	8.77	11.3	6.7	8.9	11.4
	SDR-4	12.5	17.9	23.8	13.5	18.6	24.5	13.8	18.9	24.7	14.6	19.5	25.4	15.1	20.0	25.9	15.4	20.4	26.4
SDR-5	33.3	43.9	56.6	33.4	44.1	56.7	33.4	44.1	56.8	33.6	44.4	57.2	33.8	44.7	57.6	34.2	45.2	58.3	
404A	SDR-1X	0.50	0.63	0.78	0.50	0.64	0.78	0.50	0.64	0.78	0.51	0.64	0.79	0.51	0.64	0.79	0.51	0.65	0.80
	SDR-2	1.49	1.89	2.33	1.50	1.89	2.33	1.50	1.89	2.33	1.50	1.90	2.34	1.51	1.91	2.36	1.52	1.93	2.38
	SDR-2X	3.01	3.88	4.78	3.07	3.89	4.79	3.07	3.89	4.79	3.09	3.91	4.81	3.10	3.93	4.85	3.13	3.96	4.89
	SDR-3	5.88	7.44	9.28	5.89	7.46	9.19	5.90	7.47	9.20	5.92	7.50	9.24	5.96	7.55	9.30	6.01	7.61	9.39
	SDR-3X	10.5	13.4	16.5	10.6	13.4	16.5	10.6	13.4	16.5	10.6	13.5	16.6	10.7	13.5	16.7	10.8	13.7	16.8
	SDR-4	19.4	26.7	34.2	21.1	28.0	35.3	21.6	28.4	35.7	23.0	29.6	36.7	23.8	30.4	37.6	24.5	31.1	38.3
SDR-5	53.7	68.1	83.9	54.0	68.3	84.1	54.0	68.4	84.2	54.2	68.7	84.6	54.5	69.1	85.2	55.0	69.7	85.9	
407A	SDR-1X	0.46	0.60	0.77	0.47	0.61	0.77	0.47	0.61	0.77	0.47	0.61	0.78	0.48	0.62	0.79	0.48	0.63	0.80
	SDR-2	1.38	1.80	2.28	1.39	1.81	2.29	1.39	1.81	2.30	1.40	1.83	2.32	1.42	1.85	2.35	1.43	1.87	2.38
	SDR-2X	2.81	3.69	4.69	2.85	3.71	4.71	2.86	3.72	4.72	2.88	3.75	4.77	2.91	3.79	4.82	2.95	3.84	4.89
	SDR-3	5.45	7.09	9.00	5.48	7.13	9.04	5.49	7.14	9.06	5.53	7.20	9.15	5.58	7.28	9.26	5.65	7.38	9.39
	SDR-3X	9.78	12.7	16.1	9.83	12.8	16.2	9.85	12.9	16.4	10.0	13.1	16.6	10.1	13.2	16.9	10.15	13.24	16.86
	SDR-4	18.4	25.8	34.1	19.9	27.1	35.2	20.4	27.5	35.6	21.7	28.7	36.8	22.5	29.6	37.7	23.2	30.3	38.6
SDR-5	49.9	64.9	82.4	50.1	65.2	82.8	50.2	65.4	83.0	50.6	65.9	83.8	51.1	66.6	84.7	51.8	67.6	86.0	
407C	SDR-1X	0.43	0.56	0.72	0.43	0.57	0.72	0.43	0.57	0.73	0.44	0.57	0.73	0.44	0.58	0.74	0.45	0.59	0.75
	SDR-2	1.28	1.68	2.14	1.29	1.69	2.15	1.29	1.69	2.16	1.30	1.71	2.18	1.32	1.73	2.21	1.33	1.75	2.24
	SDR-2X	2.61	3.45	4.40	2.65	3.46	4.42	2.65	3.47	4.43	2.67	3.50	4.48	2.70	3.54	4.53	2.74	3.59	4.60
	SDR-3	5.06	6.61	8.44	5.08	6.65	8.48	5.09	6.66	8.51	5.13	6.72	8.59	5.19	6.80	8.70	5.26	6.90	8.83
	SDR-3X	9.07	11.9	15.1	9.12	11.9	15.2	9.14	12.0	15.3	9.21	12.1	15.4	9.31	12.2	15.6	9.43	12.4	15.9
	SDR-4	17.1	24.2	32.0	18.5	25.3	33.1	19.0	25.7	33.5	20.1	26.8	34.6	20.9	27.6	35.5	21.5	28.4	36.4
SDR-5	46.3	60.5	77.2	46.5	60.9	77.7	46.6	61.0	77.9	47.0	61.6	78.6	47.5	62.3	79.6	48.1	63.1	80.9	
407F	SDR-1X	0.49	0.63	0.80	0.49	0.64	0.81	0.49	0.64	0.81	0.49	0.64	0.82	0.50	0.65	0.83	0.51	0.66	0.84
	SDR-2	1.44	1.88	2.39	1.45	1.89	2.40	1.45	1.89	2.41	1.47	1.91	2.43	1.48	1.93	2.46	1.50	1.96	2.51
	SDR-2X	2.93	3.86	4.90	2.98	3.88	4.93	2.98	3.89	4.94	3.01	3.93	5.00	3.04	3.97	5.06	3.08	4.03	5.15
	SDR-3	5.69	7.41	9.41	5.72	7.45	9.46	5.73	7.47	9.49	5.78	7.54	9.59	5.84	7.63	9.72	5.92	7.74	9.88
	SDR-3X	10.2	13.3	16.9	10.3	13.4	17.0	10.3	13.4	17.0	10.4	13.5	17.2	10.5	13.7	17.4	10.6	13.9	17.7
	SDR-4	19.0	26.9	35.5	20.7	28.2	36.7	21.2	28.7	37.2	22.6	29.9	38.4	23.5	30.9	39.5	24.2	31.8	40.6
SDR-5	52.0	67.8	86.1	52.3	68.2	86.6	52.4	68.3	86.9	52.9	69.0	87.8	53.5	69.8	88.9	54.2	70.9	90.4	
410A	SDR-1X	0.74	0.94	1.16	0.74	0.94	1.17	0.74	0.95	1.17	0.75	0.96	1.19	0.76	0.97	1.20	0.77	0.98	1.22
	SDR-2	2.20	2.79	3.58	2.21	2.81	3.48	2.22	2.82	3.49	2.23	2.84	3.52	2.26	2.88	3.57	2.28	2.92	3.63
	SDR-2X	4.40	5.73	7.09	4.53	5.77	7.14	4.55	5.78	7.16	4.59	5.84	7.24	4.63	5.90	7.34	4.69	5.99	7.46
	SDR-3	8.66	11.0	13.6	8.72	11.1	13.7	8.73	11.1	13.7	8.81	11.2	13.9	8.89	11.3	14.1	9.01	11.5	14.3
	SDR-3X	15.4	19.8	24.4	15.6	19.9	24.6	15.7	19.9	24.7	15.8	20.1	24.9	16.0	20.3	25.3	16.2	20.6	25.7
	SDR-4	28.0	38.7	50.0	30.6	40.8	51.9	31.4	41.6	52.7	33.6	43.7	54.8	35.2	45.3	56.5	36.4	46.6	58.2
SDR-5	78.9	101	125	79.8	101	125	79.9	102	126	80.6	103	127	81.4	104	129	82.5	105	131	
448A 449A	SDR-1X	0.45	0.59	0.74	0.45	0.59	0.75	0.46	0.59	0.75	0.46	0.60	0.75	0.46	0.60	0.76	0.47	0.61	0.77
	SDR-2	1.35	1.74	2.21	1.35	1.75	2.22	1.36	1.76	2.22	1.37	1.77	2.24	1.38	1.79	2.27	1.40	1.82	2.30
	SDR-2X	2.73	3.58	4.53	2.78	3.60	4.55	2.78	3.61	4.56	2.81	3.64	4.61	2.83	3.68	4.66	2.87	3.73	4.73
	SDR-3	5.31	6.88	8.70	5.33	6.91	8.74	5.34	6.93	8.76	5.39	6.99	8.84	5.44	7.06	8.95	5.51	7.16	9.08
	SDR-3X	9.52	12.3	15.6	9.57	12.4	15.7	9.59	12.4	15.7	9.66	12.5	15.9	9.76	12.7	16.1	9.88	12.8	16.3
	SDR-4	17.8	25.0	32.8	19.3	26.2	33.9	19.8	26.6	34.3	21.0	27.8	35.4	21.9	28.6	36.4	22.5	29.4	37.3
SDR-5	48.6	63.0	79.6	48.8	63.3	80.0	48.9	63.4	80.2	49.3	64.0	81.0	49.8	64.6	81.9	50.4	65.5	83.1	
507A	SDR-1X	0.51	0.64	0.79	0.51	0.65	0.79	0.51	0.65	0.79	0.51	0.65	0.80	0.52	0.65	0.80	0.52	0.66	0.81
	SDR-2	1.52	1.92	2.35	1.52	1.92	2.36	1.53	1.92	2.36	1.53	1.93	2.37	1.54	1.94	2.38	1.55	1.96	2.41
	SDR-2X	3.06	3.94	4.83	3.13	3.95	4.84	3.13	3.95	4.85	3.14	3.97	4.87	3.16	3.99	4.90	3.18	4.02	4.94
	SDR-3	5.99	7.56	9.28	6.01	7.58	9.30	6.01	7.58	9.31	6.04	7.61	9.35	6.07	7.66	9.40	6.11	7.72	9.48
	SDR-3X	10.7	13.6	16.6	10.8	13.6	16.7	10.8	13.6	16.7	10.8	13.7	16.8	10.9	13.7	16.9	11.0	13.8	17.0
	SDR-4	19.7	27.0	34.5	21.4	28.4	35.6	22.0	28.8	36.0	23.3	30.0	37.1	24.2	30.8	37.9	24.9	31.5	38.7
SDR-5	54.8	69.2	84.9	55.0	69.3	85.1	55.0	69.4	85.2	55.2	69.7	85.5	55.5	70.1	86.1	56.0	70.6	86.8	

Capacities are based on discharge temperature 50°F above isentropic compression, 0°F subcooling, 25°F superheat at the compressor and includes both the hot gas bypassed and the liquid refrigerant for desuperheating, regardless of whether the liquid is fed through the system thermostatic expansion valve or auxiliary desuperheating expansion valve.

Capacity - kW

MINIMUM ALLOWABLE EVAPORATOR TEMPERATURE AT REDUCED LOAD °C – kW																			
Refrigerant	Valve Model	5			3			-7			-18			-29			-40		
		Condensing Temperature °C									26			38			49		
		26	38	49	26	38	49	26	38	49	26	38	49	26	38	49	26	38	49
22	SDR-1X	1.61	2.12	2.60	1.61	2.12	2.60	1.62	2.13	2.62	1.64	2.15	2.65	1.65	2.18	2.68	1.67	2.21	2.72
	SDR-2	4.79	6.29	7.74	4.80	6.30	7.75	4.83	6.34	7.81	4.87	6.40	7.88	4.91	6.47	7.98	4.97	6.56	8.10
	SDR-2X	9.57	12.9	15.9	9.69	12.9	15.9	9.91	13.0	16.0	10.0	13.1	16.2	10.1	13.3	16.4	10.2	13.5	16.6
	SDR-3	18.9	24.8	30.5	18.9	24.8	30.5	19.0	25.0	30.8	19.2	25.2	31.1	19.4	25.5	31.5	19.6	25.9	31.9
	SDR-3X	33.6	44.5	54.7	33.9	44.6	54.8	34.2	44.9	55.2	34.4	45.3	55.8	34.8	45.8	56.5	35.2	46.4	57.3
	SDR-4	60.8	88.1	113	62.6	89.4	114	69.2	94.9	119	73.8	99.2	123	77.0	103	127	79.5	105	130
	SDR-5	172	227	279	173	227	280	174	229	282	176	231	284	177	234	288	179	237	292
134a	SDR-1X	1.07	1.45	1.81	1.07	1.45	1.82	1.07	1.45	1.82	1.08	1.46	1.83	1.09	1.47	1.85	1.10	1.49	1.87
	SDR-2	3.18	4.30	5.40	3.18	4.30	5.40	3.19	4.32	5.42	3.21	4.34	5.45	3.23	4.37	5.50	3.27	4.42	5.56
	SDR-2X	6.48	8.83	11.1	6.52	8.83	11.1	6.56	8.86	11.1	6.60	8.91	11.2	6.64	8.98	11.3	6.71	9.08	11.4
	SDR-3	12.5	16.9	21.3	12.6	17.0	21.3	12.6	17.0	21.4	12.7	17.1	21.5	12.8	17.2	21.7	12.9	17.4	21.9
	SDR-3X	22.5	30.4	38.2	22.5	30.4	38.2	22.6	30.5	38.4	22.7	30.7	38.6	22.9	30.9	38.9	23.1	31.3	39.3
	SDR-4	42.7	62.9	81.7	43.8	63.7	82.4	47.7	66.8	85.2	50.2	69.0	87.3	51.9	70.7	89.1	53.1	72.1	90.8
	SDR-5	115	155	195	115	155	195	115	156	196	116	157	197	117	158	198	118	159	201
404A	SDR-1X	1.73	2.24	2.70	1.74	2.24	2.70	1.74	2.25	2.71	1.75	2.26	2.72	1.76	2.27	2.74	1.77	2.29	2.77
	SDR-2	5.16	6.66	8.03	5.16	6.66	8.04	5.18	6.68	8.06	5.20	6.71	8.10	5.23	6.75	8.15	5.27	6.81	8.23
	SDR-2X	10.3	13.7	16.5	10.5	13.7	16.5	10.6	13.7	16.6	10.7	13.8	16.6	10.7	13.9	16.7	10.8	14.0	16.9
	SDR-3	20.3	26.2	31.7	20.3	26.3	31.7	20.4	26.3	31.8	20.5	26.4	31.9	20.6	26.6	32.1	20.8	26.8	32.4
	SDR-3X	36.3	47.1	56.8	36.5	47.1	56.9	36.6	47.3	57.1	36.8	47.5	57.3	37.0	47.7	57.7	37.3	48.1	58.2
	SDR-4	66.1	93.7	118	67.9	95.1	119	74.7	100	123	79.3	104	127	82.3	107	130	84.5	109	132
	SDR-5	185	240	290	186	240	290	187	241	291	188	242	292	189	244	294	190	246	297
407A	SDR-1X	1.62	2.16	2.68	1.62	2.16	2.68	1.63	2.17	2.70	1.64	2.19	2.72	1.66	2.22	2.76	1.68	2.25	2.80
	SDR-2	4.81	6.41	7.96	4.82	6.42	7.97	4.85	6.46	8.02	4.89	6.52	8.10	4.94	6.59	8.20	5.00	6.68	8.32
	SDR-2X	9.75	13.2	16.4	9.83	13.2	16.4	10.0	13.3	16.5	10.0	13.4	16.6	10.1	13.5	16.8	10.3	13.7	17.1
	SDR-3	19.0	25.3	31.4	19.0	25.3	31.4	19.1	25.5	31.6	19.3	25.7	31.9	19.5	26.0	32.3	19.7	26.3	32.8
	SDR-3X	34.0	45.4	56.3	34.1	45.4	56.4	34.3	45.7	56.8	34.6	46.1	57.3	34.9	46.6	58.0	35.4	47.3	58.9
	SDR-4	63.2	92.2	118.8	65.0	93.5	119.9	71.3	98.7	124.7	75.6	102.7	128.7	78.6	105.8	132.0	80.9	108.5	135.3
	SDR-5	174	231	287	174	232	287	175	233	290	176	235	292	178	238	296	181	241	300
407C	SDR-1X	1.51	2.03	2.53	1.52	2.03	2.53	1.53	2.05	2.55	1.54	2.06	2.58	1.56	2.09	2.61	1.58	2.12	2.65
	SDR-2	4.50	6.03	7.53	4.51	6.04	7.54	4.54	6.08	7.59	4.58	6.14	7.67	4.63	6.21	7.77	4.69	6.31	7.89
	SDR-2X	9.13	12.4	15.5	9.21	12.4	15.5	9.32	12.5	15.6	9.40	12.6	15.8	9.51	12.8	16.0	9.63	13.0	16.2
	SDR-3	17.8	23.8	29.7	17.8	23.8	29.7	17.9	24.0	29.9	18.1	24.2	30.2	18.2	24.5	30.6	18.5	24.9	31.1
	SDR-3X	31.8	42.7	53.2	31.9	42.7	53.3	32.1	43.0	53.7	32.4	43.4	54.3	32.7	44.0	55.0	33.2	44.6	55.9
	SDR-4	59.3	87.0	113	60.9	88.2	114	66.9	93.1	118	70.9	96.9	122	73.7	99.8	125	75.9	102	128
	SDR-5	162	218	272	163	218	272	164	220	274	165	222	277	167	224	280	169	228	285
407F	SDR-1X	1.72	2.29	2.85	1.72	2.30	2.85	1.73	2.31	2.88	1.75	2.34	2.91	1.77	2.37	2.95	1.80	2.40	3.00
	SDR-2	5.12	6.82	8.47	5.12	6.83	8.49	5.16	6.88	8.56	5.21	6.95	8.65	5.27	7.04	8.77	5.34	7.15	8.92
	SDR-2X	10.3	14.0	17.4	10.4	14.0	17.4	10.6	14.1	17.6	10.7	14.3	17.8	10.8	14.5	18.0	11.0	14.7	18.3
	SDR-3	20.2	26.9	33.4	20.2	26.9	33.5	20.3	27.1	33.7	20.5	27.4	34.1	20.8	27.8	34.6	21.1	28.2	35.2
	SDR-3X	36.1	48.3	60.0	36.3	48.3	60.1	36.5	48.7	60.6	36.8	49.2	61.2	37.3	49.8	62.1	37.8	50.6	63.1
	SDR-4	66.8	97.7	126	68.7	99.1	127	75.5	105	133	80.3	109	137	83.6	113	141	86.2	116	145
	SDR-5	184	246	306	185	246	306	186	248	309	188	251	312	190	254	317	193	258	322
410A	SDR-1X	2.54	3.29	4.00	2.54	3.30	4.00	2.56	3.32	4.04	2.58	3.36	4.09	2.61	3.40	4.14	2.64	3.45	4.21
	SDR-2	7.55	9.79	11.9	7.56	9.80	11.9	7.61	9.88	12.0	7.68	9.98	12.2	7.76	10.1	12.3	7.86	10.3	12.5
	SDR-2X	15.0	20.1	24.4	15.2	20.1	24.4	15.6	20.3	24.7	15.8	20.5	25.0	15.9	20.8	25.3	16.1	21.1	25.7
	SDR-3	29.6	38.6	46.8	29.8	38.6	46.9	30.0	39.0	47.3	30.3	39.4	47.9	30.6	39.8	48.6	31.0	40.5	49.4
	SDR-3X	52.8	69.3	84.1	53.3	69.4	84.2	53.8	69.9	85.0	54.3	70.6	86.0	54.9	71.5	87.2	55.6	72.6	88.7
	SDR-4	95.0	136	172	98	138	174	108	147	182	116	154	190	121	160	196	125	165	201
	SDR-5	270	353	429	272	354	430	275	357	433	277	360	438	280	365	445	284	370	452
448A 449A	SDR-1X	1.54	2.04	2.53	1.54	2.05	2.53	1.55	2.06	2.55	1.56	2.08	2.57	1.58	2.10	2.60	1.60	2.13	2.64
	SDR-2	4.58	6.07	7.52	4.59	6.08	7.53	4.61	6.12	7.58	4.65	6.18	7.65	4.70	6.25	7.75	4.76	6.33	7.86
	SDR-2X	9.26	12.5	15.4	9.34	12.5	15.5	9.48	12.6	15.6	9.55	12.7	15.7	9.65	12.8	15.9	9.78	13.0	16.1
	SDR-3	18.1	23.9	29.6	18.1	24.0	29.7	18.2	24.1	29.9	18.3	24.4	30.2	18.5	24.6	30.5	18.8	25.0	31.0
	SDR-3X	32.3	43.0	53.2	32.5	43.0	53.3	32.7	43.3	53.6	32.9	43.7	54.2	33.3	44.2	54.8	33.7	44.8	55.6
	SDR-4	59.8	87.0	112	61.5	88.3	113	67.6	93.2	117	71.8	97.1	121	74.6	100	125	76.9	103	128
	SDR-5	165	219	271	166	219	272	167	221	274	168	223	276	170	225	280	172	229	284
507A	SDR-1X	1.78	2.29	2.76	1.78	2.29	2.76	1.78	2.30	2.77	1.79	2.30	2.78	1.80	2.32	2.80	1.81	2.34	2.82
	SDR-2	5.29	6.81	8.20	5.29	6.81	8.20	5.30	6.83	8.23	5.32	6.85	8.26	5.35	6.89	8.32	5.39	6.95	8.39
	SDR-2X	10.6	14.0	16.8	10.7	14.0	16.9	10.9	14.0	16.9	10.9	14.1	17.0	11.0	14.2	17.1	11.1	14.3	17.2
	SDR-3	20.8	26.8	32.3	20.8	26.8	32.3	20.9	26.9	32.4	21.0	27.0	32.6	21.1	27.2	32.8	21.3	27.4	33.1
	SDR-3X	37.2	48.2	58.0	37.4	48.2	58.0	37.5	48.3	58.2	37.7	48.5	58.5	37.9	48.8	58.8	38.1	49.2	59.4
	SDR-4	67.9	96.2	120	69.8	97.5	122	76.7	103	126	81.3	107	130	84.4	110	133	86.6	112	135
	SDR-5	190	246	296	191	246	296	191	246	297	192	247	298	193	249	300	195	251	303

Capacities are based on discharge temperature 28°C above isentropic compression, 0°C subcooling, 13°C superheat at the compressor and includes both the hot gas bypassed and the liquid refrigerant for desuperheating, regardless of whether the liquid is fed through the system thermostatic expansion valve or auxiliary desuperheating expansion valve.

⚠ WARNING – USER RESPONSIBILITY

Failure or improper selection or improper use of the products described herein or related items can cause death, personal injury and property damage.

This document and other information from Parker Hannifin Corporation, its subsidiaries and authorized distributors provide product or system options for further investigation by users having technical expertise.

The user, through its own analysis and testing, is solely responsible for making the final selection of the system and components and assuring that all performance, endurance, maintenance, safety and warning requirements of the application are met. The user must analyze all aspects of the application, follow applicable industry standards, and follow the information concerning the product in the current product catalog and in any other materials provided from Parker or its subsidiaries or authorized distributors.

To the extent that Parker or its subsidiaries or authorized distributors provide component or system options based upon data or specifications provided by the user, the user is responsible for determining that such data and specifications are suitable and sufficient for all applications and reasonably foreseeable uses of the components or systems.

OFFER OF SALE

The items described in this document are hereby offered for sale by Parker Hannifin Corporation, its subsidiaries or its authorized distributors. This offer and its acceptance are governed by the provisions stated in the detailed "Offer of Sale" available at www.parker.com.

For safety information see the Safety Guide at www.parker.com/safety or call 1-800-CParker.

FOR USE ON REFRIGERATION and/or AIR CONDITIONING SYSTEMS ONLY

Bulletin 100-60, April 2020 supersedes Bulletin 100-60, March 2018 and all prior publications.

