



# ALPHA XD

H F C E L E M E N T M O N I T O R I N G





# ALPHA XD

HFC ELEMENT MONITORING

Alpha XD provides status monitoring to critical elements in the HFC network including power supplies, fiber nodes, headend optics, network trackers and AlphaGateways. Alpha XD supports **XM3 firmware download** and XM360 OSP PM certification reports.

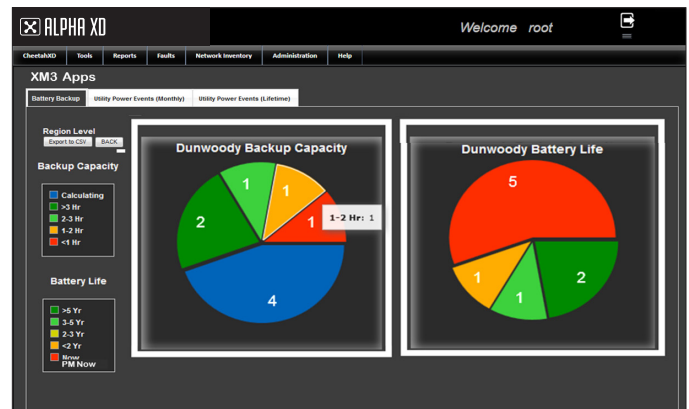
## Integrated PM Certification Data

Featuring full integration with Alpha XM360, PM certification reports are easy to access anywhere, anytime. View detailed maintenance history data on Alpha power supplies, batteries and transponders with standard electronic reports that eliminate errors related to manual entries.

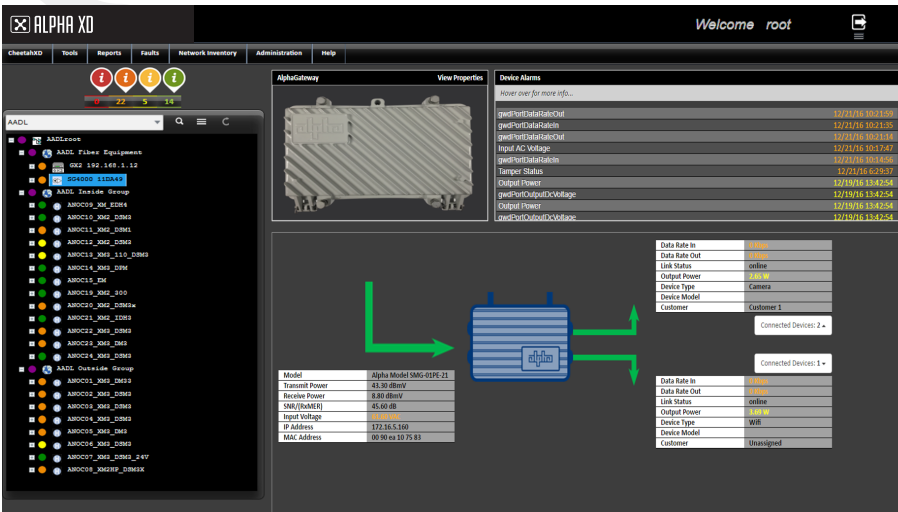
PM CERTIFICATION REPORT										
INSTALL   MAINTAIN   REPAIR   VALIDATE					Site ID: MA25-C					
<b>Site Data</b>										
Latitude	37.23	Longitude	76.22	Date	Nov. 28, 2016	Time	03:13 PM	Transformer #		
Hub	MATHEWS	City	BOHAMNON	State / Province	VA	Zip Code			23021	
Region	VA	System	MATHEWS	Node	MA25	Country			USA	
Project ID	METROCAST VACORP	Street(s)	1692 NORTH RIVER RD	Address Notes		Pole #			VB84	
Business Service	NO	Output VAC	90	120V Or 240V?	120	Powering A Node			NO	
Utility Company	DOMINION POWER	Utility Account #		Utility Meter #	106405435					
<b>Transponder Data</b>										
CM Mac Address	00:90:EA:01:92:E6	SNR	35.5	CER	0.0	Logic Card	Transmit Power	38.2	Receive Power	2.7
CM IP Address	10.40.23.47	Transponder Type	DSM3	Firmware Version	DSM3-4.9.0_03_13_NA	Timeouts	13	14	2	
<b>SNMP TRAPS</b>										
Trap 1	0.0.0.0	Trap 2	0.0.0.0	Trap 3	0.0.0.0	Trap 4	0.0.0.0			
Alpha MIB 1	0.0.0.0	Alpha MIB 2	0.0.0.0	Alpha MIB 3	0.0.0.0	Alpha MIB 4	0.0.0.0			
<b>UPSTREAM</b>										
Frequency	30.945	Modulation	QAM64	Lock	NA	Channel ID	2	Symbol Rate	2.560	
<b>DOWNSTREAM</b>										
Frequency	30.950	Modulation	8M-QAM	Lock	LOCKED	Channel ID	1	Symbol Rate	5.0000	

## Integrated XM3 Apps & SAG Data

View XM3 Apps data—including **Smart AlphaGuard (SAG)** status, battery runtime and remaining life expectancy. This feature-rich platform can view critical data in aggregate networks or for individual power supplies leveraged with additional battery and runtime data.

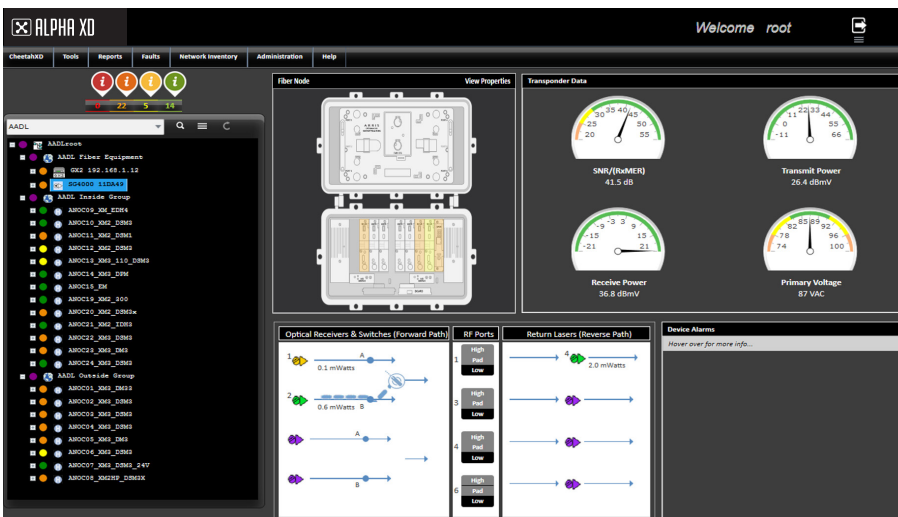


# Beyond Power Supply Monitoring



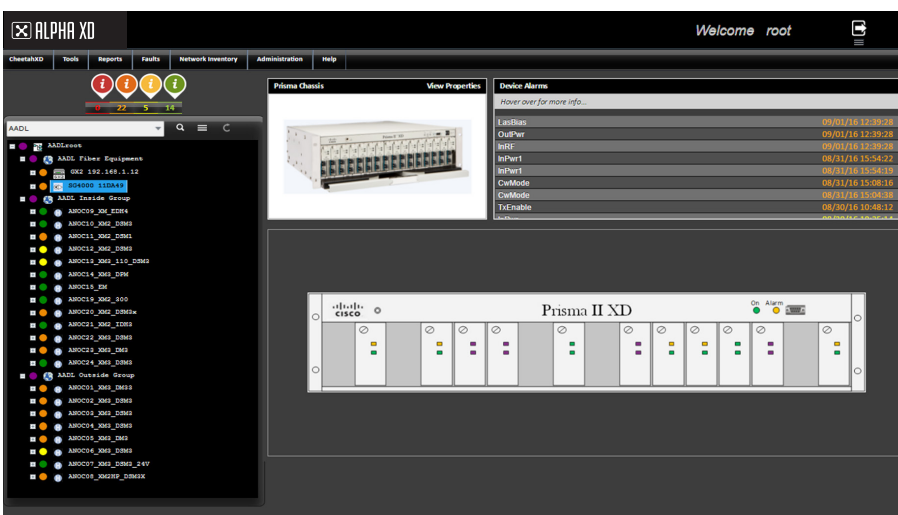
## AlphaGateway SMG

- Summary alarms sorted by device type and end customer
- Monitor data throughput and power for all connected devices
- Remote power reset for all connected devices



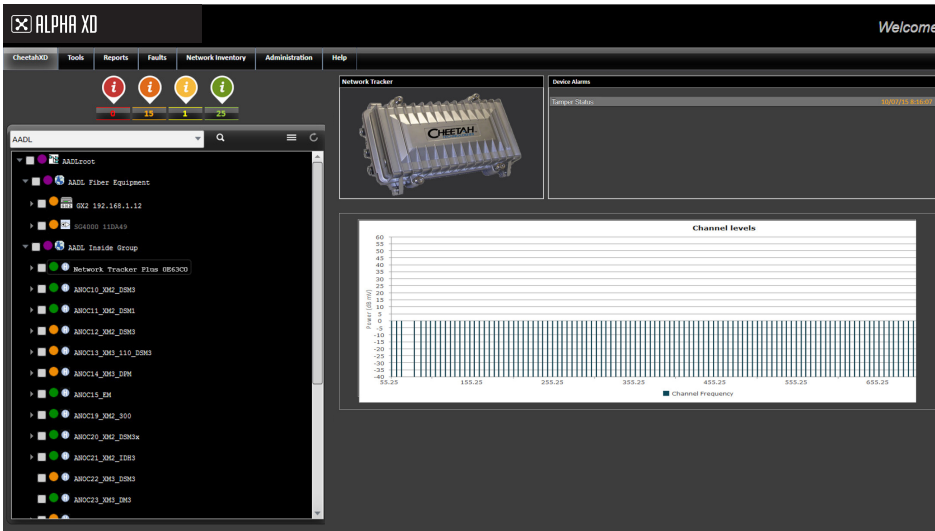
## Fiber Node

- Wink Switch UI control for troubleshooting
- Visual, module level identification of alarms



## Headend Optics

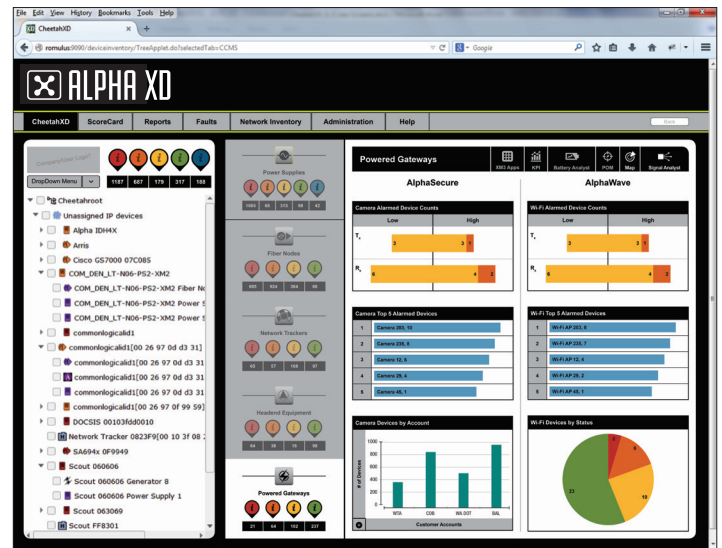
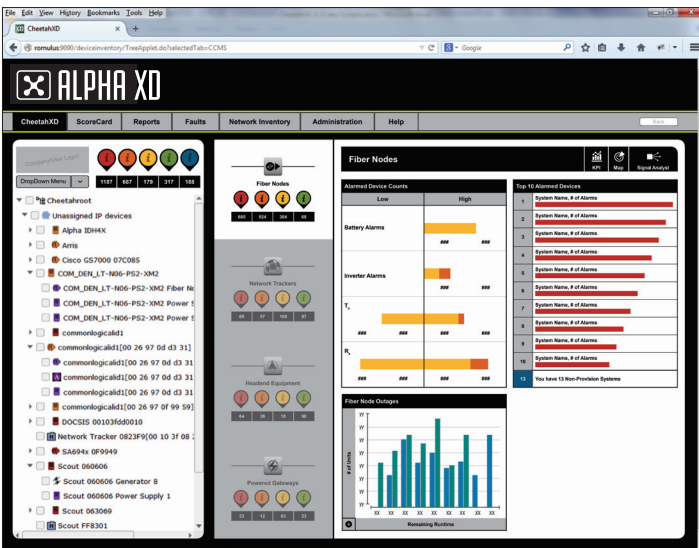
- Chassis and module alarm indicators
- One-click individual module detail



## Network Trackers

- Graphical digital channel measurement display
- FCC 24-hour reporting capability with error identification

## Enterprise Level Element Summary Info



## HFC Outside Plant Ecosystem



### Outside Plant Equipment

XM3-HP POWER SUPPLIES | ALPHACELL BATTERIES | DM3.0 TRANSPONDERS

Analytic Consulting from Coppervale



### XM360 & Services

X-TRACTOR MMS | RELIABILITY ASSURANCE (PM) | INSTALLATION & PROVISIONING

Baseline Consulting from Coppervale



### Network Monitoring

CONTINUITY SOFTWARE | ALPHA XD SOFTWARE | ASSET REPORTING

Reporting Consulting from Coppervale



### Worldwide Corporate Offices

**North America**  
Tel: +1 360.647.2360  
Fax: +1 360.671.4936

**Europe**  
Tel: +49 9122.79889.0  
Fax: +49 9122.79889.21

**Latin America**  
Tel: +561 792.9651  
Fax: +561 792.7157

**Asia Pacific**  
Tel: +852 2736.8663  
Fax: +852 2199.7988

