



A Regal Brand

Northern Tool

Catalog # : 110363.00

Product Type: AC MOTOR

Description: 2HP..3450RPM.56.DP.115/208-230V.1PH.60HZ.CONT.NOT.40C.1.15SF.RIGID.GENERAL PURPOSE.C6C34DB22E

Model: C6C34DB22E

Stock: Stock

Quote: Price:

Date: 05/05/2014



A Regal Brand

Northern Tool

Catalog # : 110363.00

Model: C6C34DB22E

Product Type: AC MOTOR

Stock: Stock

Description: 2HP..3450RPM.56.DP.115/208-230V.1PH.60HZ.CONT.NOT.40C.1.15SF.RIGID.GENERAL PURPOSE.C6C34DB22E

Engineering Data

Volts	115	Volts	208-230	Volts	
F.L. Amps	20	F.L. Amps	11-10	F.L. Amps	
S. F Amps	23.6	S. F Amps	12.8-11.8	S. F Amps	

RPM	3600	Hertz	60	TYPE	CD
HP	2	Duty	CONTINUOUS		
KW	1.492				
Frame	56	Serv. Factor	1.15	Phase	1
Max Amb	40	Design	L	Code	J
Insul Class	B	Protection	NOT	Therm.Prot.	
Eff 100%	77	Eff 75%		PF	82
UL	Yes	CSA	Yes	Bearing OPE	6203
CC Number		CE	No	Bearing PE	6203
Load Type		Inverter Type	NONE	Speed Range	NONE

Motor Wt.	40 LB	Enclosure	DP	Lubrication	POLYREX EM
Nameplate	004003	Mounting	RIGID	Rotation	SELECTIVE CCW
Assembly	NONE	Shaft Dia.	5/8	Ext. Diag.	005062.03
Cust Part No		Outline	028601-700B	Ext. Diag2	
Packaging	B	Outline Dash No		Winding	C632234
Carton Label	Leeson Gen Purpose			GROUP :	3
Iris		Paint	STANDARD	Test Card	01

Form Factor		RMS Amps		Const TorqueSpeed Range	
Torque		Peak			
AB Code		Peak@DegC			
Resistance					
Connection					

Rework Status	Rework TYPE
---------------	-------------

Hazardous Loc
Explosion Proof
Class
Class

NONE

Temp Op Code
GROUP
GROUP

Brake Motors
FORCE
VDC
ADC

Brake Coil OHMs @25 C

Performance					
Torque UOM	LB-FT		Inertia (WK ²)	.074 LB-FT ²	
Torque	3(Full Load)		7.5(Break Down)	6.7(Pull Up)	6.8(Locked Rotor)
CURRENT (amps)	10(Full Load)		0(Break Down)	0(Pull Up)	63(Locked Rotor)
Efficiency (%)	0(Full Load)		80.2(75% Load)	77.1(50% Load)	66.1(25% Load)
PowerFactor	(Full Load)		75.6(75% Load)	65(50% Load)	46.1(25% Load)

Load Curve Data @60 HzVolts,2Horsepower

Load	Amps	KW	RPM	Torque	Eff	PF	Rise By Resis	Frame Rise
0.0	2.54	0.2	3598	0.0	0.0	34.2	0.0	-
0.25	5.43	0.576	3573	0.75	66.1	46.1	0.0	-
0.5	6.57	0.982	3550	1.5	77.1	65.0	0.0	-
0.75	8.07	1.404	3524	2.25	80.2	75.6	0.0	-
1.0	10.06	1.919	3491	3.0	77.5	82.9	45.0	-
1.25	12.18	2.406	3457	3.75	76.6	85.9	0.0	-
1.5	14.7	2.97	3413	4.5	73.5	87.8	0.0	-

SOURCE: CALCULATED GROUP: 3

Load Curve Data @60HzVolts,2Horsepower

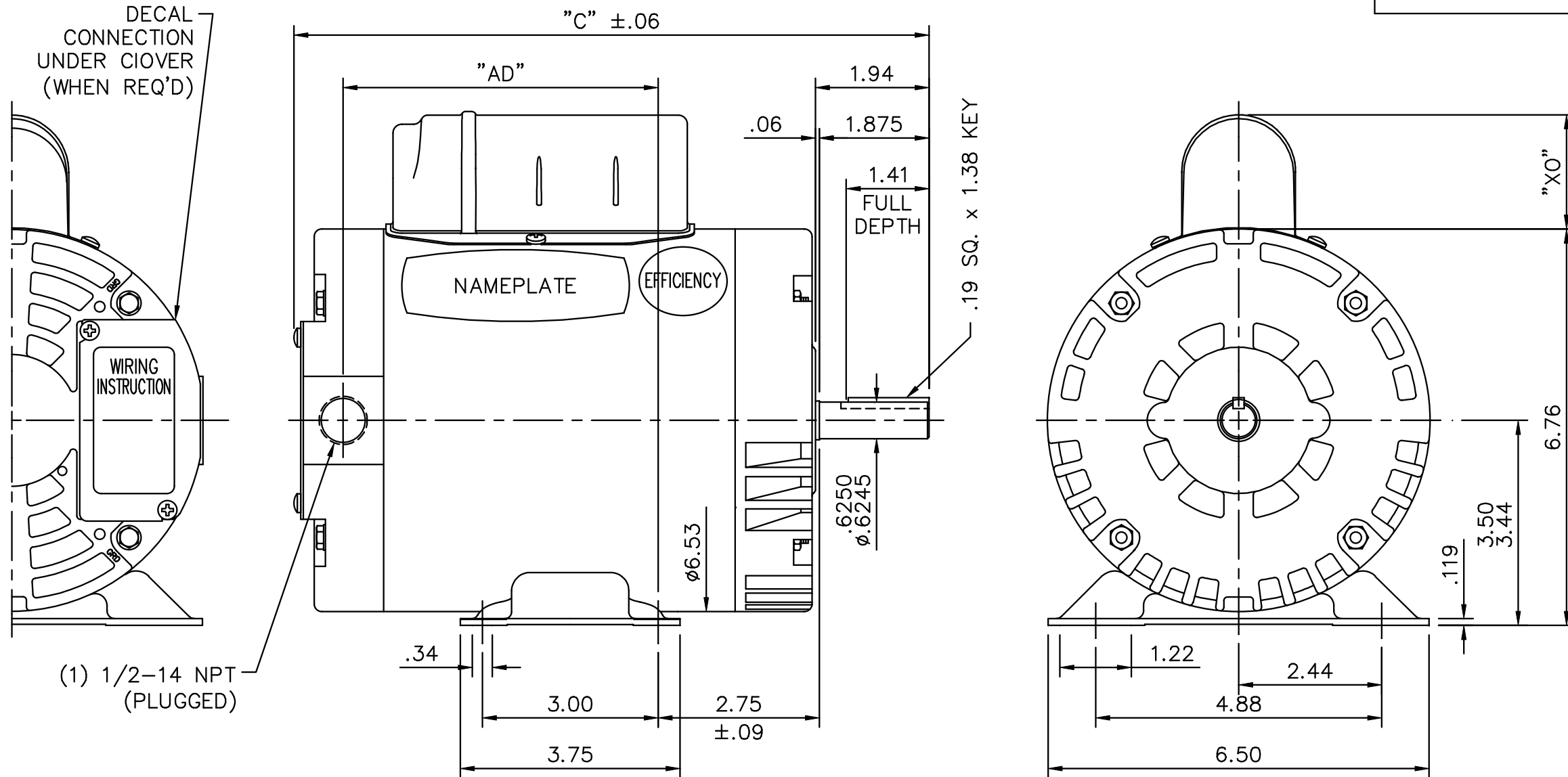
Load	Amps	KW	RPM	Torque	Eff	PF	Rise By Resis	Frame Rise
------	------	----	-----	--------	-----	----	---------------	------------

Load Curve Data Not Available

Quote: Price:

Date: 05/05/2014

028601



(1) 1/2-14 NPT (PLUGGED)

DASH NO.	"C"	"AD"	CAP. DASH	"X0"
500	9.84	4.37	A	1.48
550	10.34	4.87	B	1.95
600	10.84	5.37	C	2.19
650	11.34	5.87		
700	11.84	6.37		



ELECTRIC MOTORS
GEARMOTORS
AND DRIVES

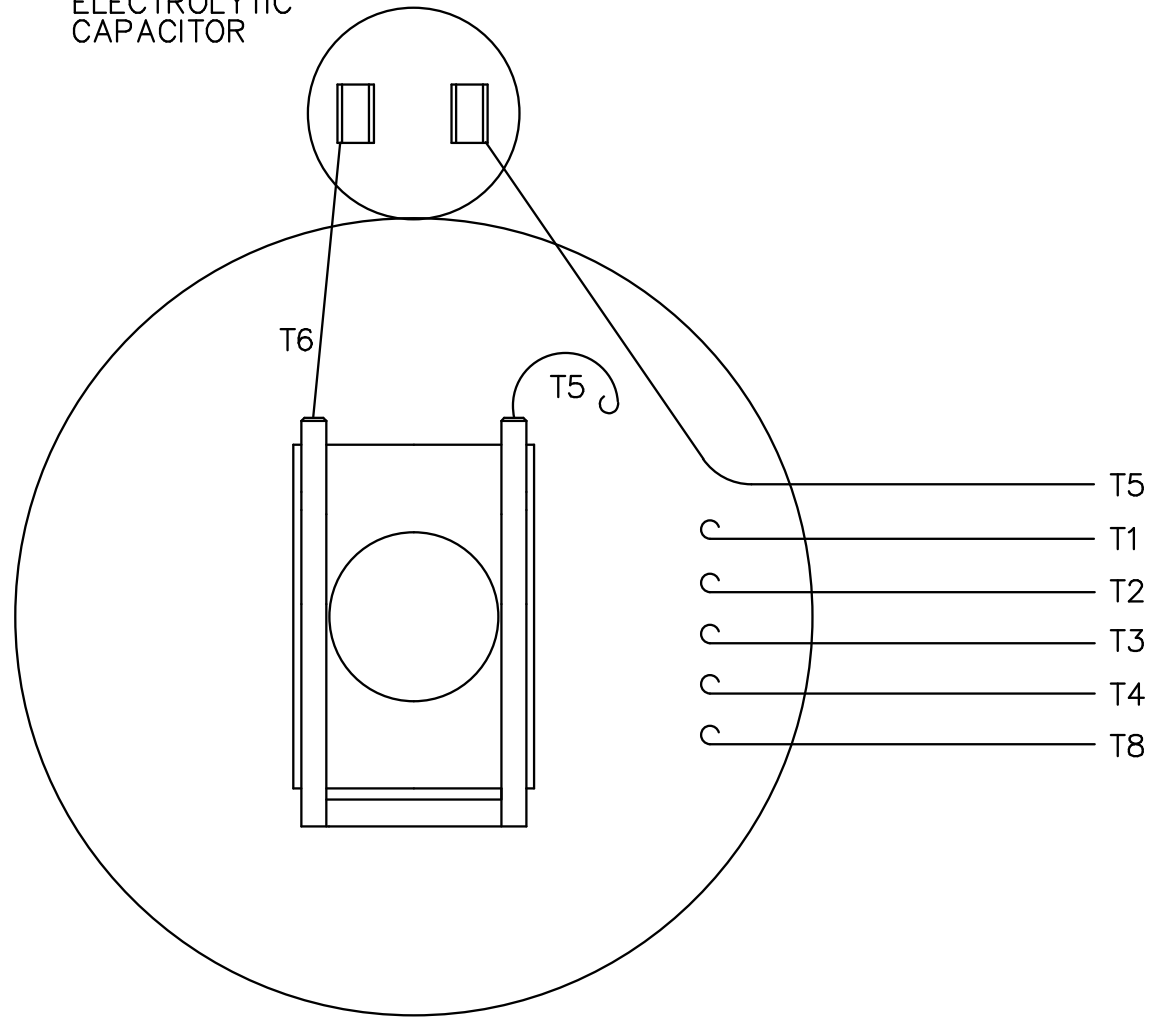
NO.		REVISION	BY & DATE	CHK	ANG	FINISH	TITLE		SCALE	REF	PREV
				TOLERANCES UNLESS SPECIFIED		DEC. INCHES		DRAWN RDW 7/1/04		CHK	
				.X	±.1	ELECTRIC MOTORS GEARMOTORS AND DRIVES		APPD SW 7/1/04		SCALE 3=8	
				.XX	±.03	OUTLINE - 56 FRAME		REF		FMF	
				.XXX	±.005	DRIP PROOF - RIGID		REV.		PREV	
				.XXXX	±.0005	GENERAL PURPOSE		RFP 7/1/04		CAD FILE 028601	
				±1/2°				SIZE A		DRAWING NO. 028601	
								DIST BRF-NLV		REV.	

THIS DRAWING IN DESIGN AND DETAIL IS OUR PROPERTY AND MUST NOT BE USED EXCEPT IN CONNECTION WITH OUR WORK ALL RIGHTS OF DESIGN AND INVENTION ARE RESERVED THIS IS AN ELECTRONICALLY GENERATED DOCUMENT - DO NOT SCALE THIS PRINT

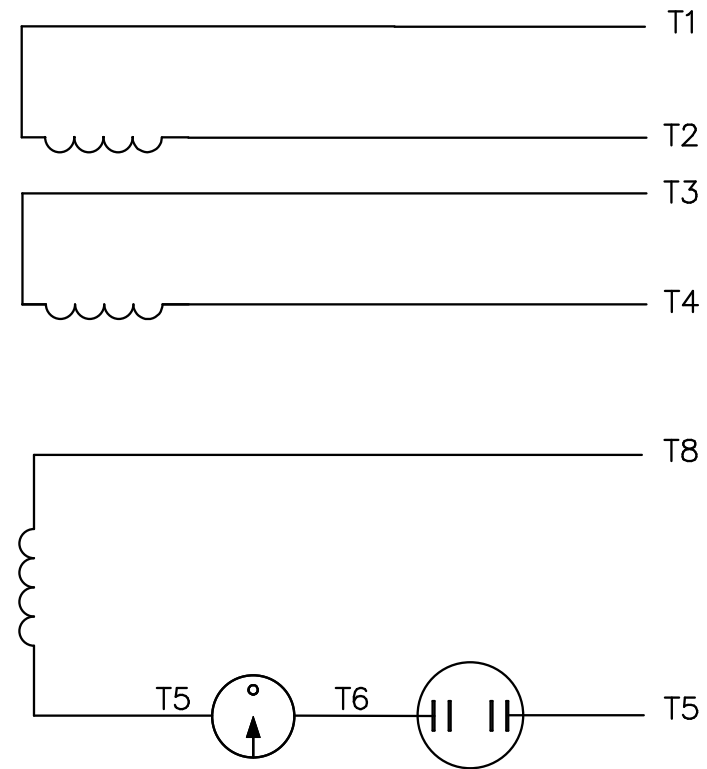
005062-03

VIEW FROM OUTSIDE OF MOTOR AT SWITCH END.

ELECTROLYTIC CAPACITOR



LINE LEADS



	ROTATION FACING LEAD END	L1	L2	JOIN
HIGH VOLT	C.C.W.	T1	T4 T5	T2,T3 T8
	C.W.	T1	T4 T8	T2,T3 T5
LOW VOLT	C.C.W.	T1,T3 T8	T2,T4 T5	---
	C.W.	T1,T3 T5	T2,T4 T8	---

				TOLERANCES UNLESS OTHERWISE SPECIFIED		LEESON ELECTRIC CORPORATION				
				DECIMALS						
				.00	± .01	DRAWN DLL 02/16/83	TITLE EXT. WIRING DIAGRAM			
03	REVISED TO CURRENT STANDARDS	DWF	BJB	06/06/00	.000	± .005	CH'K'D. ADH 02/17/83	TYPE "C" W/O PROTECTOR		
02	REDRAWN ON CAD		NFC	07/08/99	.0000	± .0005	APPR. JAT 02/17/83	MAT'L. NLV	DECAL A-004012	BRF
NO.	REVISION		BY	DATE	FRACTIONS	± 1/64	SCALE	DOUBLE CONTACT SWITCH		
THIS DRAWING IN DESIGN AND DETAIL IS OUR PROPERTY AND MUST NOT BE USED EXCEPT IN CONNECTION WITH OUR WORK ALL RIGHTS OF DESIGN AND INVENTION ARE RESERVED					ANGLES	± 1/2°	REF. A-005061	FINISH	SIZE	DRAWING NO.
					INCH/MM		FMF 6C17DC22	ENERPAC	A	005062-03