

# HuPro



**COOL MIST HUMIDIFICATION**  
Warm & Cool Mist Humidification



Introduction.....	3
Application of the device.....	4-5
Safety.....	6-8
User safety tips.....	9-10
Humidifier parts.....	11
Instructions for use.....	12-13
Operating instructions.....	14-15
Adding essential oils to the aroma tray.....	16
Remote control.....	17
Remote control battery replacement.....	18
Care for the device.....	19
Storage.....	20
Specifications.....	21
Ceramic filter.....	22
Troubleshooting.....	23
Warranty.....	24

Dear buyer!

We thank you once again for choosing our brand HuPro. We sincerely hope that using our product will be a satisfactory experience for you and you will consider becoming our regular customer.

The humidifier helps you restore the appropriate level of humidity and eliminate the discomfort associated with dry air. We wish you many years of healthy indoor air with the help of this effective product.

Please familiarize yourself with the instructions which include valuable information about the product and all its features in order to get the best experience while operating the ultrasonic humidifier. Use the item only according to the following instructions. In case of misuse, the device might malfunction or possibly cause a short circuit.

The manufacturer cannot be held responsible in cases where the device has been used for purposes other than those mentioned in the instructions, misuse, noncompliance with safety rules, or in cases of unqualified repairs.

We are always here to help you.

The HuPro supersonic humidifier is an effective solution to insufficient air humidity. Soft purified air will contribute to your better sleep, relieve symptoms of colds, headaches, moisturize & improve elasticity of the skin, and boost the properties that protect the skin.



Ensures good night sleep



Prevents headaches



Reduces allergy symptoms



Cares for indoor plants



Relieves cold and flu symptoms



Relieves dry skin



Ensures long life of wooden surfaces and hardware floors



Low energy consumption

An intuitively intelligible interface, stylish design, and automatic safety system will provide a great experience while operating the device. You'll enjoy its quality and longevity from the very first minute.



4 L Capacity  
& 30H  
Humidifying



Warm and Cool mist  
with 5 speed levels



Automatic shut  
off when out  
of water



Top filling  
design



Remote  
control



Automatic  
control of  
humidity level



Antibacterial  
anion function



Aroma  
oil tray



**ATTENTION!** Please, follow below-mentioned basic safety precautions when using this electrical appliance.

- 1) This appliance can be used by children aged from 8 years and above and persons with reduced physical, sensory or mental abilities or lack of experience and knowledge if they have been given supervision or instruction concerning use of the appliance in a safe way and understand the hazards involved. Children shall not play with the appliance. Cleaning and user maintenance shall not be made by children without supervision.
- 2) Before using this appliance make sure that the voltage of your electricity supply is the same as that indicated on the rating plate of the appliance.
- 3) Always place the humidifier on a hard, flat surface. Avoid exposure to direct sunlight and always keep it away from walls and heat sources such as stoves, radiators, etc. Warning: The appliance may not work correctly if it is not placed on a flat surface.
- 4) Do not insert or remove the electric plug with wet hands.

- 6) If the mains cable is damaged, it must be replaced by the manufacturer, its service agent, or similarly qualified persons.
- 7) To reduce the risk of electrical shock, do not remove screws. The unit does not contain any user-serviceable parts. Please, leave all maintenance work to qualified personnel.
- 8) Fill the tank with fresh, distilled or demineralized water. Do not switch on the appliance when there is no water in the tank.
- 9) Do not shake the appliance as the water might spill into the unit base. 10) Never touch the water or components while the unit is in operation.
- 11) If there is an unusual smell when the item is being used as described in the manual, switch the appliance off, unplug it and have it examined by your dealer.
- 12) Do not pour hot water (over 100°F) into the tank.
- 13) Unplug the appliance before cleaning it or removing the tank.
- 14) Do not immerse the appliance, the mains cable or plug in water or other liquids.
- 15) Never scrape the mineral deposits with a hard tool. The humidifier must be cleaned regularly. To do this, refer to the cleaning instructions in this manual.
- 16) If you spill any liquid into the unit, it can cause serious damage. Switch it off immediately. Withdraw the mains plug and consult your dealer.
- 17) Disconnect the unit from the power supply when not in use and before cleaning.
- 18) Ensure that the mains cable does not touch any hot surface and that it does not overhang a table edge.

- 19) Never use this appliance in a room where aerosol products (sprays) are used or in a room where oxygen is being administered.
- 20) Do not put items of clothing or towels on top of the appliance. If the nozzle is obstructed, this may cause the appliance to malfunction.
- 21) When moving the appliance, lift it by the unit base and not by the water tank.
- 22) Do not use the humidifier if the air in the room is already sufficiently humid (relative humidity of at least 50%).
- 23) The ideal relative humidity level for human comfort is in fact between 45% and 60%. Excess humidity shows up in the form of condensation on cold surfaces or cold walls in the room. To measure the room's humidity correctly, use a hygrometer available online and in most stores.
- 24) The humidifier is designed for indoor use only.



**ATTENTION!** Before plugging the device in check if the voltage stated on the back panel of the device corresponds to the voltage capacity in your outlet. Operate the device only at the voltage stated on the underside of the device.

**SAVE THESE INSTRUCTIONS**

## USER SAFETY TIPS

Do not direct the flow of humid air at furniture or electronic devices as it may lead to unwanted condensation.

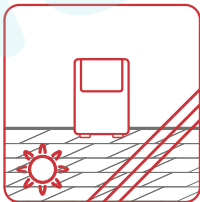
Place and use the humidifier only on a dry flat horizontal surface. Keep the device on a glass, marble, or plastic surface above floor level.

Do not put the device DIRECTLY on varnished, painted, or wooden surfaces that could be damaged by moisture or water.

Do not place the humidifier on floors with underfloor heating.

Do not cover the device or put anything on it.

Make sure not to pour water into the air tube as it will immediately result in the device malfunction.



## USER SAFETY TIPS

Do not put the device on carpets or towels.

If you keep the humidifier on a wooden or table, put a 30"x30" plastic mat or other substitute under it to avoid condensation under the device.

Do not turn on the device while using smoke repellents, diffusing oily admixtures, scented candles, aroma diffusers, or if any chemical vapour is present in the air.

Fill the reservoir only with cold water. Do not fill the humidifier with anything other than water.

Do not add any scented oils/substances or any aromatherapy oils to water.

Using tap water with high mineral content (hard water) with any humidifier causes white dust to be emitted. To avoid this, use distilled or demineralized water.

Always disconnect the plug from the electrical outlet before servicing, cleaning, or adding water.



The device was designed for 110v supply only.



Do not pour any cleaning fluids or chemicals into the water reservoir.



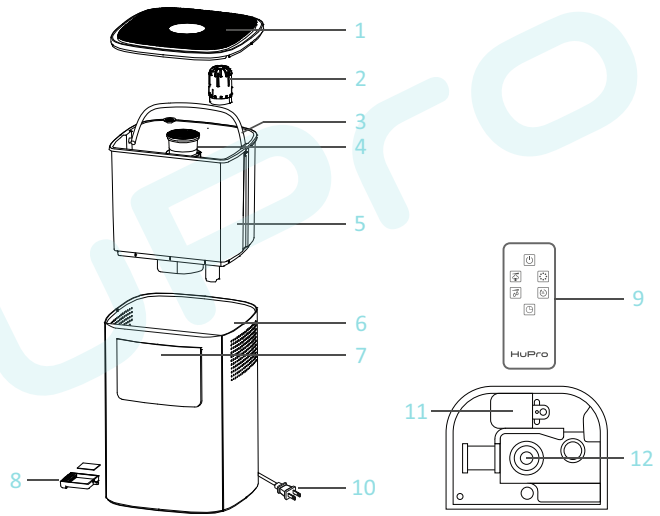
Do not put the device or the mains plug in water or other fluids.



Disconnect the mains plug by holding the plug. Do not pull the cable.



- 1. Top Cover
- 2. Water Filter
- 3. Handle
- 4. Mist Outlet
- 5. Water Tank
- 6. Housing
- 7. LCD Display
- 8. Aroma Box
- 9. Remote Control
- 10. Power Plug
- 11. Buoy
- 12. Transducer



## INSTRUCTIONS FOR USE

1. Put the device on a flat surface.
2. Remove the lid, take the water tank out of the humidifier.
3. Pour water into the water tank and put it back into the main base. Make sure the water tank is placed correctly in the humidifier base.
4. Put the lid on the humidifier. The nozzle of the humidifier should not be higher than the lid itself.



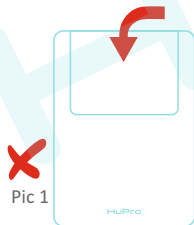
Use cold/warm (not over 100 °F) distilled or filtered water.



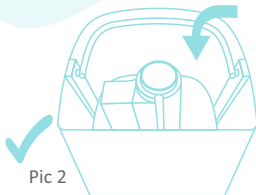
Pour water in the water tank ONLY (Pic 2)! Do not fill the humidifier base with water (Pic 1). The humidifier base is automatically filled with water through a water tank valve.



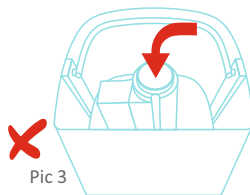
Make sure not to pour water into the air tube (Pic 3) as it will immediately result in the device malfunction. If the water reservoir is empty, the device will stop working and there will be a red warning indicator.




Pic 1



Pic 2




Pic 3

4. Plug the mains plug into the socket. A flashing ON/OFF symbol will appear on the display. Now the device is ready for use.
5. Touch the On/Off symbol on the device, the device will begin to work in AUTO mode, the display will show the AUTO symbol  and current humidity. The device will independently define the current humidity. 10 seconds later, the display will show the room temperature. Then, the temperature and moisture level will be displayed in turn.



In order to start using the humidifier, just press the ON/OFF button.  
To use other functions, kindly take time to familiarize yourself with instructions.



**ATTENTION!** When the device has run out of water it will enter into the lack of water mode . Pour water into the water tank and the humidifier will resume working.


### **On/Off**

Short press to turn the humidifier on/off.

### **HUMIDITY/C**

1) Humidity level. To select the desired humidity level, press the button one or several times. The minimum humidity level is 30%, the maximum - 75%.

After you select the humidity level that you want to reach, the humidifier will save it and show the current humidity level on the display. The current humidity level will be shown on the display until the humidifier reaches the selected level.


2) Sleep Mode . Press and hold the button until the display turns off completely to enter the sleep mode. To cancel the sleep mode, press the On / Off button.

### **TIMER**

Press the button to select the auto shut off timer. Choose between 1 to 12 hours. The humidifier will stop working after the number of hours you selected. To disable the timer, press and hold the button until the selected value disappears from the display.

## OPERATING INSTRUCTIONS - ON THE HUMIDIFIER

### WARM/ANION


Press once to activate the warm mist mode. Warm mist will be reached within 15-20 minutes. Maximum warm mist temperature is 140F .

Press again to enable the ionization mode .


To turn off the ionization mode or the warm mist mode, press the button until you get the desired combination.

Press and hold the button for a few seconds to turn the UV lamp on / off. This mode is not shown on the display. The ultraviolet lamp light can be seen through the side openings of the humidifier or when you remove the cover.

### MIST OUTPUT SLIDER


Press the “MAX” indicator to turn on the maximum mist power or “MIN” to turn on the minimum mist power. You can also slide your finger across the panel to select any other mist output level. Only 5 power levels are available .

### WATER SHORTAGE


If there is not enough water in the water tank, the device will automatically stop working and enter into a Standby Mode. A water shortage symbol  will appear on the display and 3 warning beeps will sound at once. When the humidifier is in Sleep Mode, no warning beeps will be heard. Refill the humidifier with water and switch the device on. Now it is ready for use.

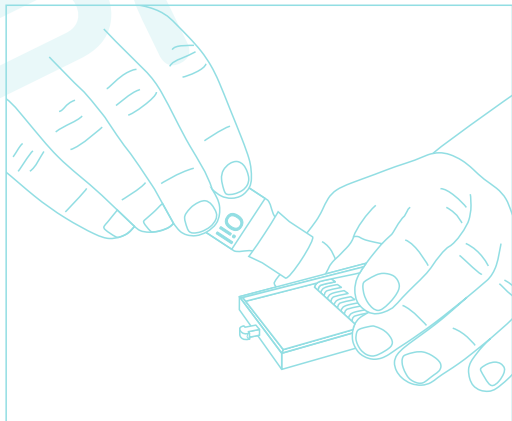
If there is too much water in the water tank, the display will show an EF symbol and the humidifier will automatically stop working. Pour out some water from the water tank and switch on the device again. It will operate in a current mode.

1. Open the aroma tray near the base of the humidifier.
2. Apply 2-3 drops of essential oil on the specially designed sponge.
3. Close the aroma tray.

 Use only natural essential oils. Synthetic oils may lead to damaging the aroma box.

 Add oils and fragrances only to the aroma box to avoid damaging the device.

 All aroma oils are different in concentration and smell intensity. Therefore, regulate the number of drops according to your preferences. Start with 3 drops and add more if you wish to enhance the smell.



## REMOTE CONTROL

### 1. ON/OFF

Short press to turn the humidifier on/off.

### 2. MIST LEVEL

Mist output level selection. Available from 1 to 5.

### 3. HUMIDITY/℃

1) Short press to select the humidity level. The minimum humidity level is 30%, the maximum - 75%.

2) Press and hold to enter the sleep mode. Press any button to turn the sleep mode off.

### 4. WARM ANION

Press once to select the warm mist mode.

Press again to select the ionization mode.

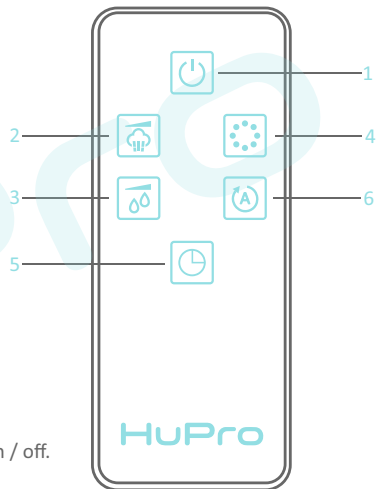
Press and hold the button for several seconds to turn the UV lamp on / off.

### 5. TIMER

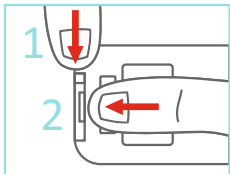
Choose between 1 to 12 hours to activate the automatic shut off timer. Press and hold to disable this function.

### 6. AUTO

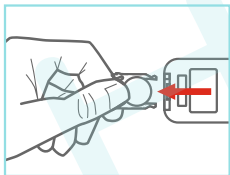
Press to activate the auto humidification mode.



HOW TO CHANGE THE BATTERY IN THE REMOTE:



1. Press the button 1 in the direction of the arrow. Then press the button 2 in the direction of the arrow. Remove the battery container.



2. Replace the battery and put the battery container back in the remote.

If the water is hard, which means it contains too much calcium and magnesium, it can cause a “white powder” problem and leave limescale on the surface of the water basin, transducer and inner surface of the water tank. Scale on the transducer surface will interfere with the unit operation.

We recommend:

- 1) Use cold boiled water or distilled water.
- 2) Clean the transducer, water tank and basin every week.
- 3) Change the water in the tank often to keep it fresh.
- 4) Make sure there is no water in the water tank and humidifier base before storing the unit.
- 5) Clean the whole unit and make sure that all parts of the unit are completely dry before storing the unit.



### How to clean the transducer:

- 1) Put 5-10 drops of cleaning agent / vinegar on the surface of the transducer, wait for 2-5 minutes.
- 2) Brush off the scale from the surface.
- 3) Rinse the transducer with clean water.



### How to clean the humidifier base:

- 1) Clean the water basin with a soft cloth and cleaning agent / vinegar if there is scale in it.
- 2) If there are deposits on the security switch, apply the cleaning agent / vinegar on the scale and clean it out with a brush.
- 3) Rinse the water basin with clean water.

## STORAGE



Unplug the device.



Pour all the water out of the reservoir. Dry the reservoir with a cloth.



Let the device cool down.



Store the device in a cold dry place away from children.

## DISPOSAL



The device must be disposed of separately at the end of its life.

It can be recycled at your local electronics and appliance recycling depot.

Model	PRO-777
Control Type	LED-screen with sensor buttons, remote control
Voltage	120V
Power:	30W for cool mist, 110W for warm mist
Frequency	60Hz
Capacity	4L
Evaporation Rate	350ml/H ( $\pm$ 50ml/H)
Noise Level	$\leq$ 35dB(A)
Product Size	8.66 x 8 x 66 x 12.99 inch.

## AUTOMATIC PROTECTION

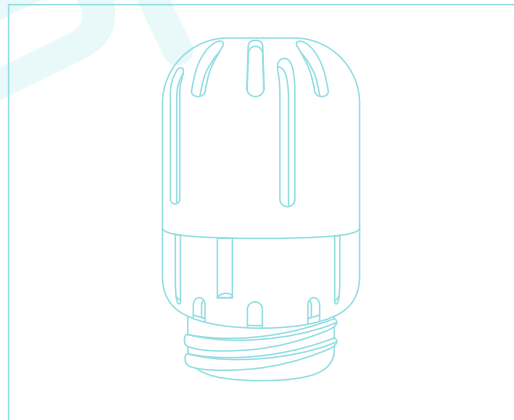
If there isn't enough water you'll hear the buzzer beeping one time.

If the water reservoir is empty, the device will stop working and there will be a red warning indicator.

1. The water is filtered through active carbon & mineral pellets.
2. Then the water passes through a container of ceramic pellets made from maifanite & tourmaline minerals that resonate with water particles on the far infrared frequency.
3. The ceramic pellets also generate negative ions to extract impurities.

How to maintain the water filter:

1. To clean the water filter, simply rinse with tap water every 1-2 weeks.
2. There is no need to replace the water filter as long as its structure is not compromised.



Problem	Possible reasons	Solution
Power lamp off, does not work	No power supply	Connect power supply, switch on
Power lamp on, no mist is produced	No water in water tank	Fill the water tank with water
Abnormal smell of the mist	New unit	Take out the water tank, open the cover, wait for 12 hours
	Dirty water or water sitting too long	Clean the water tank, fill with clean water
Power lamp on, unit doesn't work	Too much water in the water basin	Pour out some water from the water basin
Mist fog is too low	Too much scale in the water basin	Clean the humidifier
	Water is too dirty or water kept too long in the tank	Clean the water tank and change to fresh clean water
Abnormal noise	There is not enough water in the tank	Fill the tank with water
	Unit is on an unstable surface	Move the unit to a stable flat surface
Mist fog coming out from around the nozzle	There are apertures between the nozzle and water tank	Dip the nozzle in water for a while and then fix it onto the socket on the water tank

The warranty period for all HuPro devices is 12 months from the date of purchase. The manufacturer will address all manufacture defects free of charge. If for some reason you are not satisfied with our product, then you just need to contact us on Amazon, email us or just give us a call.

We are available 24/7, always ready to do everything possible to make you happy.

We resolve most of the issues within 1 business day.



**WARNING:** This appliance is intended for household use only. The standard warranty for commercial and professional use does not apply to this device.



Online Customer Support  
Just scan and get support

 [www.hupro.biz](http://www.hupro.biz)

 [support@hupro.biz](mailto:support@hupro.biz)