

# CENTURION STORE SUPPLIES

Exactly What You Need...Right When You Need It.

 A Stevens Group Company



Check Out The All New  
[CENTURION-INC.COM](http://CENTURION-INC.COM)

*Label Solutions* Store Promotional Items

*Zebra*® Point of Sale Forms & Supplies  
Business Stationary

*sign solutions* Monarch® *Dymo*®



# ABOUT CENTURION STORE SUPPLIES

## CENTURION STORE SUPPLIES

*Exactly What You Need...Right When You Need It.*

### BRANDING STATEMENT

Centurion designs, manufactures and distributes store supplies specifically for hardware and other retail stores. Combined with our substantial "in stock" inventory and shipping capabilities, we promise that retailers will receive exactly the store supplies they need, right when they need them.

### WHAT WE DO

We design, manufacture and distribute a broad variety of stock and customized store supplies to help you efficiently run store and promote your brand. From labeling systems, forms, stationery and signs - to merchandising, register and printer supplies, we provide solutions for individual retail stores and specific applications within them.

### CUSTOM ORDERS

We are pleased to provide a solution to your unique needs! If you do not see what you need in our catalog, please contact us at **1.800.323.2193**. Our Centurion Service Representatives will work with you to develop the best custom solution possible.

### VISIT [WWW.CENTURION-INC.COM](http://WWW.CENTURION-INC.COM)



Our website provides hassle free access to hundreds of products specific to your needs. Create an account to get started.

***Your Online Account Provides:***

- Access to Centurion products 24/7
- Stock items
- Custom stationery printing
- Pricing, quantity breaks
- Product images & descriptions
- Order history
- And much more!

### QUESTIONS? OR TO PLACE AN ORDER...

*Contact a Centurion Service Representative one of the following ways –*



phone **(800) 323-2193**



email **SERVICE@CENTURION-INC.COM**



fax **(866) 449-8725**



**WWW.CENTURION-INC.COM**



<b>ADVERTISING AIDS</b> .....	<b>3-9</b>
LED Signs .....	3-4
Quick Change Sign Holders & Boards .....	5
Customized Store Mats .....	6
Sign Builder .....	7
Indoor & Weatherproof Promotional Signs .....	8
Promotional Supplies .....	9
<b>PRICING &amp; TAGGING</b> .....	<b>10-14</b>
Dymo Labels & Tags .....	10
Zebra Labels & Tags .....	11
Laser Labels & Tags .....	12-13
Laser Price Labels .....	13
Monarch Supplies .....	14
<b>IN STORE PRODUCTS</b> .....	<b>15-18</b>
Paint Formula Labels .....	15
Dymo Label Printer .....	15
Custom Paint Formula Labels .....	16
Customized Bags .....	17
Reclosable Bags .....	17
Tags .....	18
<b>POS SUPPLIES</b> .....	<b>19</b>
Receipt Rolls .....	19
Signature Capture Machine Supplies .....	19
<b>GENERAL STORE OPERATIONS</b> .....	<b>20-26</b>
Forms & Envelopes .....	20-25
Stationery .....	25
Inventory Tags .....	26
Printer Supplies .....	26
Laminating Products .....	26
<b>LOSS PREVENTION</b> .....	<b>27</b>
<b>RENTAL SUPPLIES</b> .....	<b>28-29</b>
Forms .....	28
Ready To Rent Tags & Decals .....	29



## LED SIGNS

### FEATURED PRODUCT

#### LED OPEN SIGN WITH DIGITAL BUSINESS HOURS

Are you open? Centurion's new LED "Open Sign with Business Hours" enables you to answer the question as fast as your customer approaches your store. The "Open" portion of the sign is so bright and clear at a distance that customers can see it from the street. If your store is closed, your customer can drive right up to your front door and see your hours in the lower section of the sign without ever getting out of his or her vehicle. The LED display is visible 24 hours a day. As an added plus, the LED lights are energy efficient. The "Open" portion of the sign offers a number of display options - static, scroll and flash. The business hours portion of the display is simple to set or adjust as necessary. (Minutes increase in 30 minute increments.) The "Open Sign with Business Hours" package includes the sign (23.4" x 30.4"), power supply, ceiling and wall-mounting hardware, installation and operational instructions and warranty card. The sign is designed for indoor installation only and carries a three-year warranty.

Item	Description	Price Per Each
A 7060330	Open Sign with Business Hours	159.00



A 7060330

#### LED OPEN SIGN

Our "Open" sign features a bright, energy-efficient LED display with red and blue lights. Three optional display modes—static, tracer and flashing. Sign includes two chains for hanging and a power adapter. This sign measures 21"W x 13" H, and is designed for interior mounting only, and features a one-year warranty.

Item	Description	Price Per Each
B 7060110	Oval Open Sign	60.00



B 7060110

#### LIGHT FRAME LED MESSAGE BOARD & SUPPLIES

Our Light Frame LED Message Board lets you customize your message to match your business. Whether on a counter top, in a storefront or hanging on a wall, this vibrant message board will be sure to catch your customers eye while using minimal energy. 100% mercury-free, your Light Frame is guaranteed to send the right message to your audience.

Item	Description	Price Per Each
C 7060441	Light Frame LED Message Board	159.00



C 7060441

#### ADDITIONAL MARKER SETS

Fluorescent markers designed to be used with our Light Frame LED Message Boards. Image glows when light passes through. Easily clean with dampened cloth. 6mm set includes white, pink, red, yellow, light blue and green markers. 15mm set includes white, pink, red, orange, yellow, light blue, green and violet markers.

Item	Description	Price Per Each
D 7069102	6 Fluorescent Markers 6mm set	21.00
E 7069101	8 Fluorescent Markers 15mm set	60.00



D 7069102



E 7069101

#### Specifications & Features

- LED Light Frame Message Board
- 23" W x 27" H
- 20" W x 24" H Write On/Wipe Off
- 8 LED Light Colors & 5 Function Modes
- 6 Fluorescent markers 6mm White, Pink, Orange, Green, Violet and Yellow

- Hanging Kit Includes 2 Chains, 2 "S" Hooks and 2 Ceiling Hooks
- Hangs Vertically or Horizontally
- Power Supply
- 3 Year Manufacturer Warranty



## BRIGHTEN UP YOUR BUSINESS & INCREASE YOUR SALES NOW WITH SPELLBRITE



### SPELLBRITE® "CLICK TOGETHER" LED SIGNAGE SYSTEM

Retailers now can take full advantage of the power of ultra-bright LED signs to grab customer attention 24 hours a day even in direct sunlight.

The SpellBrite® LED signage system from Centurion is a perfect alternative to neon or fixed-dot LED signs. The system includes 44 letters, numbers and special characters that enable any retailer to create the exact message he or she wants in as little as a few minutes. The system's individual "click together" characters make it easy to change the message just as fast.

The signs are ultra-bright but they are energy efficient. A sign message of 22 letters uses less energy than a 40-watt incandescent light bulb. The LEDs have a long service life with a rating of 80,000 hours. The signs also feature many animation and dimmer options. The signs use power supplies that plug into standard electrical outlets and even battery packs that make the sign mobile.

Sign characters are durable. All are made of high-impact acrylic and ABS plastic. And, the signs are just the right size to be displayed and moved anywhere from store front interior windows to interior walls, countertops or even suspended with chains.

With SpellBrite® "click together" LED signs from Centurion there is no better time to put a bright light on your business.

### SPELLBRITE IS THE PERFECT SOLUTION!

*"We have signs in five stores and we are looking to add SpellBrite to all of our other locations."*



*SpellBrite is the perfect solution for retail hardware store locations. Now you can change your sign to announce your unique products and services for each season of the year!*

*— Mike Formica, Round Lake, IL*

Item	SpellBrite® Sign Description	Size	Price Per Sign
A	7060606 CAMPING   SUPPLIES	27.6"W x 15.0"H x 1.5"D	320.00
B	7060607 FISHING   TACKLE &   LICENSES	30.0"W x 23.8"H x 1.5"D	471.00
C	7060608 FREE   LOCAL   DELIVERY	28.4"W x 23.8"H x 1.5"D	411.00
D	7060609 GLASS   CUTTING	25.6"W x 15.0"H x 1.5"D	268.00
E	7060610 LAWN &   GARDEN   CENTER	25.0"W x 23.8"H x 1.5"D	385.00
F	7060611 OPEN	16.5"W x 6.3"H x 1.5"D	95.00
G	7060620 OPEN   CLOSED	23.7"W x 15.0"H x 1.5"D	242.00
H	7060605 PAINT   FOR ANY   PROJECT	26.9"W x 23.8"H x 1.5"D	402.00
I	7060612 PATIO   FURNITURE	31.7"W x 15.0"H x 1.5"D	302.00
J	7060613 PET   SUPPLIES	27.6"W x 15.0"H x 1.5"D	242.00
K	7060614 PLUMBING   ELECTRICAL   HARDWARE	35.0"W x 23.8"H x 1.5"D	542.00
L	7060604 POOL   SUPPLIES	27.6"W x 15.0"H x 1.5"D	268.00
M	7060615 PROPANE	27.7"W x 6.3"H x 1.5"D	155.00
N	7060603 RENTALS	27.4"W x 6.3"H x 1.5"D	155.00
O	7060602 SCREEN   REPAIR	23.5"W x 15.0"H x 1.5"D	268.00
P	7060616 SMALL   ENGINE   REPAIR	21.2"W x 23.8"H x 1.5"D	377.00
Q	7060617 SNOW BLOWERS   SHOVELS   SALT	48.1"W x 23.8"H x 1.5"D	474.00
R	7060618 STORAGE   & TOOLS	28.2"W x 15.0"H x 1.5"D	293.00
S	7060621 WE CUT   GLASS	24.2"W x 15.0"H x 1.5"D	233.00
T	7060601 WE CUT   KEYS	24.2"W x 15.0"H x 1.5"D	225.00
U	7060619 WE DELIVER	35.3"W x 6.3"H x 1.5"D	275.00

**CONTACT A CENTURION SERVICE REPRESENTATIVE FOR YOUR OWN CUSTOM MESSAGE OR TO DISCUSS YOUR NEEDS!**

**(800) 323-2193**



Contact a Centurion Service Representative for more information or for personalization/custom printing pricing.



# ADVERTISING AIDS

## QUICK CHANGE SIGN HOLDER & BOARDS

### QUICK CHANGE SIGN HOLDERS

Our 37.25" H x 24.375" W Quick Change Sign Holder is made of durable plastic – no rust, splinters, discoloration or maintenance. Signs quickly slide in and out and stay securely in place, no clips, bolts or added parts. Stabilizing brace prevents the accidental or intentional spreading or closing of the sign faces. Secure brace with sandbag or other weight. **New Features:** This sign holder can now be internally weighted and can be used with our new Rider Signs.

Item	Description	Holder Dimension	Use Sign Size	Marker Board	Price Per Sign Holder
A	1220	36" H x 24" W	28" H x 22" W	CP2228 BLK	74.81

\*Fill legs with sand or water to stabilize.

Price for Sign Holder only

### COROPLAST MARKER BOARDS & RIDERS

Our Coroplast signs have the ability to reach a large audience with minimal cost. Available as blank signs, our corrugated plastic signs are ideal for repeated outdoor use. They can be moved easily and left out in rain or sunlight without being damaged. Both sides of the Coroplast can be used for capturing attention. They require NM-1SET/NM-2SET wet erase markers to withstand the elements. Wet erase marker copy is easily removed with glass cleaner. Coroplast signs can also be custom printed with your store's logo, etc. Our new Sale Rider Sign can be seated at the top of the 1220 Sign Holder. The hinges will "grab" the Sign Rider and hold in position.

Item	Sign Size	Copy	Use Holder	Sign Qty.	Price
B	28" H x 22" W	Blank	1220	2	24.50
C	6" H x 24" W	Black with Red "SALE"	1220	1	14.00
D	6" H x 24" W	"ACE Rental"	1220	1	14.00
E	6" H x 24" W	"Do it Best Rental Center"	1220	1	14.00



A 1220

B CP2228 BLK  
28" H x 22" W

C CP0624 BSL  
6" H x 24" W

**ORDER**  
1 SIGN HOLDER  
1 SIGN RIDER  
2 MARKER BOARDS  
1 SET OF MARKERS

**AND GET 10% OFF!**

**MORE OPTIONS AVAILABLE ONLINE!**  
[WWW.CENTURION-INC.COM](http://WWW.CENTURION-INC.COM)

### PALLET SIGN HOLDER AND MARKER BOARDS

Our Pallet and Sign Holders are made of galvanized steel and are designed to secure corrugated plastic signs upright and to be held securely under pallets. Use our CP2210 BLK or CP2228 BLK Marker Boards with our NM-1SET/NM-2SET Wet Erase Markers to create your sales signs.

Item	Description	Qty./Box	Price Per Box
F	7011000 Galvanized Pallet Holder	25	137.50

Item	Description	Size	Qty./Package	Price Per Package
G	CP2210 BLK Black Marker Board	22" W x 10" H	25	103.25



F 7011000 Shown With

G CP2210 BLK  
22" W x 10" H



H NM-1SET

I NM-2SET

### WET ERASE MARKERS

Available with either 4mm or 15mm tips, our Wet Erase Markers are chisel tipped and designed to withstand the elements of the outdoors. They are rain, and kid resistant. We suggest laying the board on a flat surface for writing. Once dry, you cannot rub the copy off but can easily remove with glass cleaner.

Each set contains: black, red, blue, green, pink, yellow, orange and white markers.

Item	Description	Price Per Each
H	NM-1SET Set of 8 Wet Erase Markers – 4mm	28.34
I	NM-2SET Set of 8 Wet Erase Markers – 15 mm	55.40

Contact a Centurion Service Representative for more information or for personalization/custom printing pricing.

Prices are subject to change without notice.



## CUSTOMIZED STORE MATS

### SUPERSCAPE™ IMPRESSIONS

SuperScrape™ Impressions scraper/scrapper wiper/wiper mats feature circular cleats to ensure multi-dimensional scraping. Customers clean their shoes simply by walking over the mats. The mats do all the work. These mats are produced by molding a digitally printed thermo-plastic material into durable Nitrile rubber. The anti-static rubber will not crack or curl.



Item	Size	Finished Size	Price Per Each	
<b>A SuperScrape™</b>			<b>1</b>	<b>2+</b>
SS 3X5	3' x 5'	34" x 54"	152.80	114.60
SS 3X10	3' x 10'	34" x 111"	327.33	255.32
SS 4X6	4' x 6'	45" x 67"	195.25	156.20
SS 4X8	4' x 8'	45" x 95"	345.80	293.93

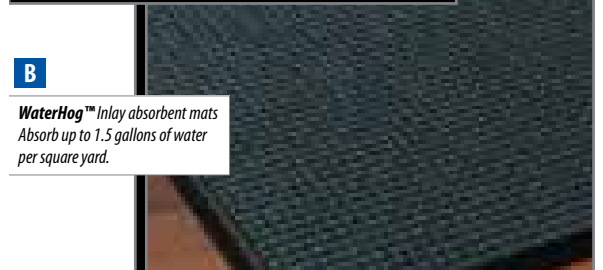


**A**  
**SuperScrape™ Impressions scraper mats**  
Circular cleats ensure efficient scraping from any direction as customers walk over them.

### WATER HOG™ INLAY

Water Hog™ Inlay absorbent mats can retain up to 1.5 gallons of water per square yard. Images like store logos can be applied using up to 18 colors at no additional charge. A heavy duty rubber backing will not crack or curl. They are certified slip resistant by the National Floor Safety Institute.

Item	Size	Finished Size	Price Per Each	
<b>B Water Hog™</b>			<b>1</b>	<b>2+</b>
WHS 3X5	3' x 5'	35" x 58"	320.92	—
WHS 3X10	3' x 10'	35" x 116"	539.10	—
WHS 4X6	4' x 6'	45" x 69"	454.32	—
WHS 4X8	4' x 8'	45" x 96"	538.63	—



**B**  
**WaterHog™ Inlay absorbent mats**  
Absorb up to 1.5 gallons of water per square yard.

### DIGIPRINT HD™

DigiPrint HD™ logo mats reproduce print and photographic quality images that are ideal to display store logos. Images can be reproduced in any color against 25 different color backgrounds. DigiPrint images are permanent and colorfast. DigiPrint mats can be used virtually anywhere indoors. They perform double duty by not only reinforcing your store logo and image, but also gently wiping and drying customer shoes to keep your store clean. The rubber backing is guaranteed to lay flat and not curl.

Item	Size	Finished Size	Price Per Each	
<b>C DigiPrint HD™</b>			<b>1</b>	<b>2+</b>
DIGHD 2X3	2' x 3'	24" x 35"	179.77	98.05
DIGHD 3X4	3' x 4'	35" x 47"	200.77	112.05
DIGHD 3X5	3' x 5'	35" x 59"	210.12	135.65
DIGHD 3X10	3' x 10'	35" x 119"	345.52	263.82
DIGHD 4X6	4' x 6'	45" x 69"	268.48	205.43
DIGHD 4X8	4' x 8'	45" x 95"	406.22	304.60



**C**  
**DigiPrint HD™ logo mats**  
Provide the ideal mat material for reproduction of store logos and other customer information.

### HOGHEAVEN™ ANTI-FATIGUE MATS

HogHeaven™ anti-fatigue mats provide exceptional cushioning especially important for store employees working service and point-of-sale areas. They are anti-slip, easy to clean and are oil and chemical resistant.

Item	Size	Finished Size	Price Per Each	
<b>D HogHeaven™</b>			<b>1</b>	<b>6+</b>
AF 2X3	2' x 3'	24" x 33"	171.80	94.50
AF 3X5	3' x 5'	33" x 60"	232.45	174.35
AF 4X6	4' x 6'	46" x 73"	293.08	234.47
AF 3X12	3' x 12'	33" x 142"	384.03	318.75



**D**  
**HogHeaven™ anti-fatigue mats**  
Provide exceptional cushioning important to employees working point-of-sale and service areas.

Contact a Centurion Service Representative for more information or for personalization/custom printing pricing.



# SignBuilder™

by CENTURION

FREE Templates make Sign Making, Easy and Fast!

**SignBuilder™** by Centurion is an integrated sign solution that includes indoor and outdoor sign stock, **FREE** templates for imaging your sign stock, and matching sign holders for display.

Find your template on our website:  
**WWW.CENTURION-INC.COM**  
Save it, Print it!



## K-FRAMES

Elegant, round cornered two-sided sign frame that is both interchangeable and versatile. In-store advertising made cost-effective when snapped into any one of a variety of K-Frame base choices (all bases sold separately). Can be used in either portrait (vertical) or landscape (horizontal) orientation and repositioned as needed. Signs are framed evenly on all four sides by an attractive 15/32" wide border.

Item	Sign Size	Frame Opening	Style	Price Per Package of 5				
				5	10	20	40	
A	150184	5-1/2" x 3-1/2"	on 3-1/2" Side	Landscape or Portrait	-	6.92	6.65	5.32
	150179	7" x 5-1/2"	on 5-1/2" Side	Landscape or Portrait	7.54	6.85	5.80	-
	150182	11" x 7"	on 7" Side	Landscape or Portrait	9.42	8.56	7.25	-

## K-FRAME STEM & BASE HOLDER

Free standing, flat based sign holder that slips easily under boxes or products. Versatile built-in adjustable stem allows messages to be placed low to the countertop or rise above. Signs slide into the top if used in a portrait (vertical) orientation, or the side if used in a landscape (horizontal) orientation. Sign frame has elegant, rounded corners. No tools required.

Item	Sign Size	Base Style	Price Per Package of 5			
			5	10	20	
B	150199	12" thru 22"	Shovel (Rectangular)	29.00	26.36	22.31

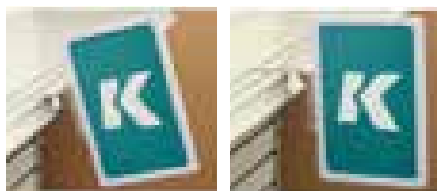


**A** 150184  
150179  
150182



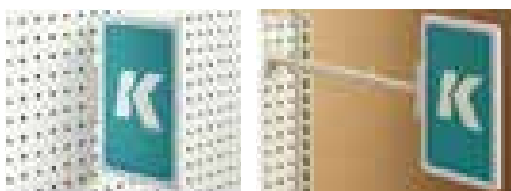
\*K-frame sold separately

**B** 150199



**C** 106607

**D** 106407



**E** 106507

**F** 106927

## K-FRAME SHELF & PEGBOARD HOLDER

Integrated snap-on adapter that firmly holds our full line of plastic K-Frames in either portrait (vertical) or landscape (horizontal) orientation. Hinged style option is great for mounting signs in high-traffic areas - flexible hinge swings and returns to original position when bumped. The base is designed to fit into most perforated shelves. Removable and reusable. Patent Pending.

Item	Type	Application	Style	Price Per Each					
				25	50	125	250	500	
C	106607	With Hinge	Channel Mount Holder	Landscape or Portrait	1.18	1.13	1.07	0.98	0.91
D	106407	With Hinge	Shelf Top Holder	Landscape or Portrait	0.90	0.87	0.82	0.75	0.69
E	106507	With Hinge	Pegboard Holder	Landscape or Portrait	0.82	0.79	0.75	0.69	0.63

Item	Type	Application	Style	Price Per Each				
				5	10	25	50	
F	106927	With Hinge	Telescopic Pegboard Holder	Landscape or Portrait	5.57	5.07	4.65	4.29

Contact a Centurion Service Representative for more information or for personalization/custom printing pricing.

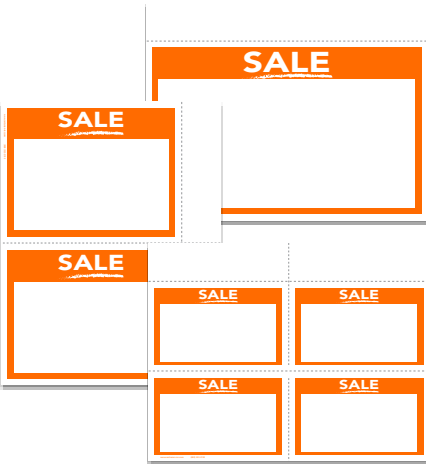
Prices are subject to change without notice.



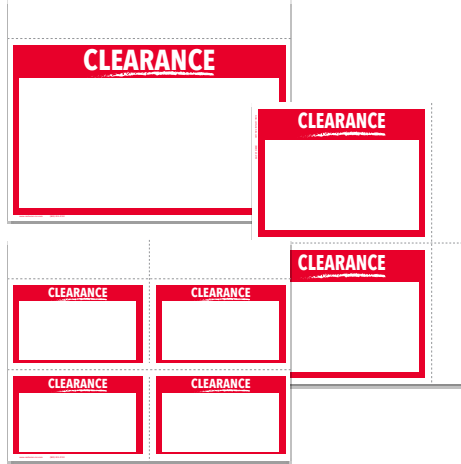


## INDOOR & WEATHERPROOF PROMOTIONAL SIGNS

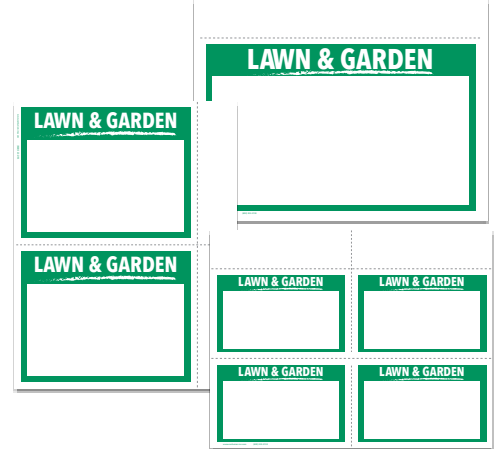
**A** 7071100 Indoor Sign  
7071190 Weatherproof Sign



**D** 7071200 Indoor Sign  
7071290 Weatherproof Sign



**G** 7071390 Weatherproof Sign



**B** 7072100 Indoor Sign  
7072190 Weatherproof Sign

**E** 7072200 Indoor Sign  
7072290 Weatherproof Sign

**H** 7072390 Weatherproof Sign

**C** 7074100 Indoor Sign  
7074190 Weatherproof Sign

**F** 7074200 Indoor Sign  
7074290 Weatherproof Sign

**I** 7074390 Weatherproof Sign

### INDOOR PROMOTIONAL SIGNS

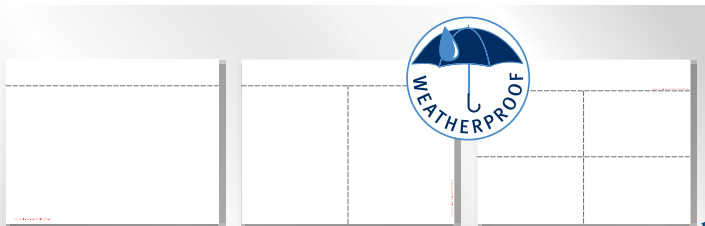
Our Indoor Promotional Signs come 1, 2 and 4 per sheet. Manufactured on 7 point card stock, they are perfect laser printing or handwritten signs.

Item	Sign Size	Design/ Logo	Signs/ Sheet	Signs/ Package	Price Per Package	
A	7071100	11" x 7"	Sale	1	100	10.30
B	7072100	7" x 5½"	Sale	2	200	10.30
C	7074100	5½" x 3½"	Sale	4	400	10.30
D	7071200	11" x 7"	Clearance	1	100	10.30
E	7072200	7" x 5½"	Clearance	2	200	10.30
F	7074200	5½" x 3½"	Clearance	4	400	10.30

### WEATHERPROOF PROMOTIONAL SIGNS

Our Weatherproof Signs come in 1, 2 and 4 per sheet. Manufactured with durable materials, fade resistant inks that stand up to the sun, rain, heat and cold designed to be used in laser printers only. For best results in printing use mono printers or color printer with pigmented inks such as Epson DuraBrite® and HP Vivera inks.

Item	Sign Size	Design/ Logo	Signs/ Sheet	Signs/ Package	Price Per Package	
A	7071190	11" x 7"	Sale	1	25	32.00
B	7072190	7" x 5½"	Sale	2	50	32.00
C	7074190	5½" x 3½"	Sale	4	100	32.00
D	7071290	11" x 7"	Clearance	1	25	32.00
E	7072290	7" x 5½"	Clearance	2	50	32.00
F	7074290	5½" x 3½"	Clearance	4	100	32.00
G	7071390	11" x 7"	Lawn & Garden	1	25	32.00
H	7072390	7" x 5½"	Lawn & Garden	2	50	32.00
I	7074390	5½" x 3½"	Lawn & Garden	4	100	32.00
J	SIGN GEN1W	11" x 7"	Blank	1	25	32.00
K	SIGN GEN2W	7" x 5½"	Blank	2	50	32.00
L	SIGN GEN4W	5½" x 3½"	Blank	4	100	32.00



**J** SIGN GEN1W  
11" x 7"

**K** SIGN GEN2W  
7" x 5½"

**L** SIGN GEN4W  
5½" x 3½"



Contact a Centurion Service Representative for more information or for personalization/custom printing pricing.



# ADVERTISING AIDS

## PROMOTIONAL SUPPLIES

Our Best Selling Promotional Supplies are customizable and bring attention to your store in whatever way you want to personalize them. We offer a wide range of color options and ways to personalize your items. **Call for additional information, colors, and personalizing options.**

### HOTLINE APPOINTMENT CALENDAR

Personalization available (on a 10-1/2" x 1-5/8" area) in black ink only. **Note:** To view all available calendars, visit [www.hotlineproducts.com](http://www.hotlineproducts.com).

Item	Description	Price Per Each				
		150	300	750	1000	2500
<b>A</b> CALENDARHL	Appointment Calendar	1.97	1.58	1.56	1.50	1.47

*\*Additional Set Up Fees May Apply*



**A** CALENDARHL

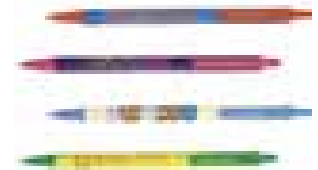
### BIC CLIC STIC PENS

5-7/16"L x 1/2"Dia. Trim and Barrel Colors come in a wide variety of options.

Item	Description	Price Per Each			
		300	500	1000	2500
<b>B</b> CS	Bic Clic Stic Pens	0.62	0.58	0.57	0.56

Call for a complete list of available colors and options.

*\*Additional Set Up Fees May Apply*



**B** CS

### ENAMEL FINISHED CARPENTER PENCILS

Our carpenter pencils are flat, natural wood pencils with medium lead. Price includes one color personalization and up to three lines of ad copy printed on one side.

Item	Description	Price Per Each			
		1000	2500	5000	10000
<b>C</b> 20410	Carpenter Pencils	0.40	0.39	0.38	0.37

Call for a complete list of available colors and options.

*\*Additional Set Up Fees May Apply*



**C** 20410



**D** WA100

### NAIL APRONS

Our Nail Aprons are 10 oz. heavy-duty cotton duck with two pockets, pencil pocket and extra-long tie straps. Pricing includes personalization in one color. 15" x 4" personalization area.

Item	Description	Price Per Each			
		150	250	500	1000
<b>D</b> WA100	Personalized Nail Aprons	2.83	2.66	2.53	2.45

Call for a complete list of available colors and options.

*\*Additional Set Up Fees May Apply*

### SADDLE KEY TAGS

Our 1-1/2" x 2" durable plastic Western Saddle Key Tags can have copy (straight-line or logo) hot stamped in one color on one side.

Item	Description	Price Per Each		
		350	500	1000
<b>F</b> 27095	Saddle Key Tags	0.57	0.52	0.46

Call for a complete list of available colors and options.

*\*Additional Set Up Fees May Apply*

WELCHES MOUNTAIN BUILDING SUPPLY CO.  
803-622-3000

**E** 134P



**F** 27095

### HARDWOOD PAINT PADDLES

Our 14" hardwood paint paddles can be personalized on one side in straight-line type.

Item	Description	Price Per Each		
		1000	2000	5000
<b>E</b> 134P	Hardwood Paint Paddles	0.16	0.15	0.14

Call for a complete list of available colors and options.

*\*Additional Set Up Fees May Apply*

Contact a Centurion Service Representative for more information or for personalization/custom printing pricing.

Prices are subject to change without notice.



## DYMO LABELS & TAGS

### FEATURED PRODUCT

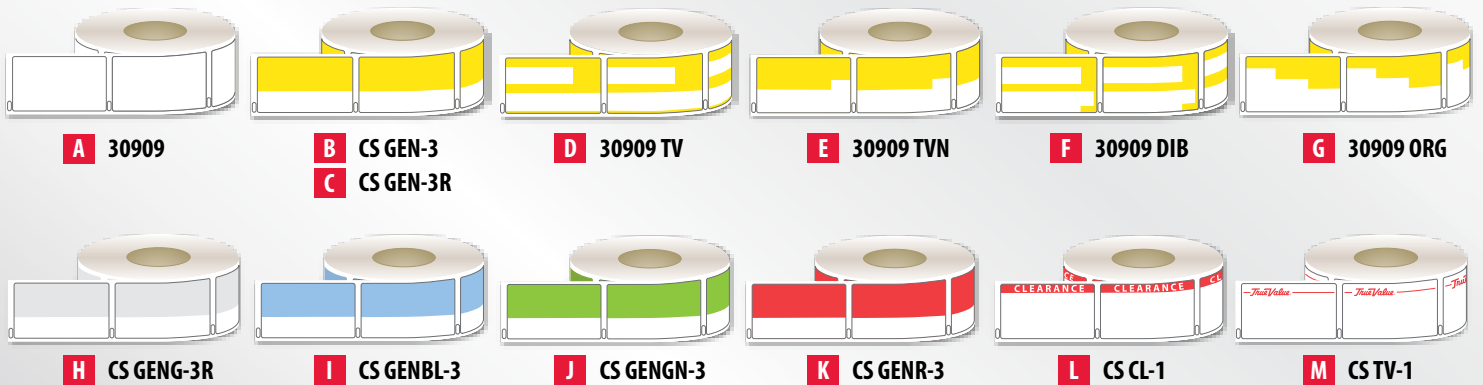
#### DYMO BIN LABELS

Our 1 1/4" x 2" Dymo Bin Labels are designed to fit all Dymo LabelWriter printers. Sized to fit almost any shelf channel and the most popular size label holders. They are available with permanent or removable adhesive. Compatible with Epicor, ECI RockSolid POS and Spruce software. Can also be used with free Dymo software, on any PC, if you do not have a POS system. Contact a Centurion Service Representative or go to [www.centurion-inc.com](http://www.centurion-inc.com) for instructions on how to set up your Dymo printer with Epicor software.

Item	Description	Adhesive	Labels/ Roll	Rolls/ Carton	Labels/ Carton	Price Per Carton
A	30909 White	Permanent	500	10	5,000	47.00
B	CS GEN-3 Half Yellow/Half White	Permanent	500	10	5,000	60.65
C	CS GEN-3R Half Yellow/Half White	Removable	500	10	5,000	60.65
D	30909 TV True Value Warehouse	Permanent	500	10	5,000	60.65
E	30909 TVN True Value Warehouse	Permanent	500	10	5,000	60.65
F	30909 DIB Do It Best Warehouse	Permanent	500	10	5,000	60.65
G	30909 ORG Orgill Warehouse	Permanent	500	10	5,000	60.65

Item	Description	Adhesive	Labels/ Roll	Rolls/ Carton	Labels/ Carton	Price Per Carton
H	CS GENG-3R Half Gray /Half White	Removable	500	10	5,000	60.65
I	CS GENBL-3 Half Blue/Half White	Permanent	500	10	5,000	60.65
J	CS GENGR-3 Half Green/Half White	Permanent	500	10	5,000	60.65
K	CS GENR-3 Half Red/Half White	Permanent	500	2	1,000	16.85
L	CS CL-1 "Clearance"	Permanent	500	2	1,000	16.85
M	CS TV-1 True Value Logo	Permanent	500	10	5,000	60.65

Core Size: I.D. 1 1/4" O.D. 3 3/8"

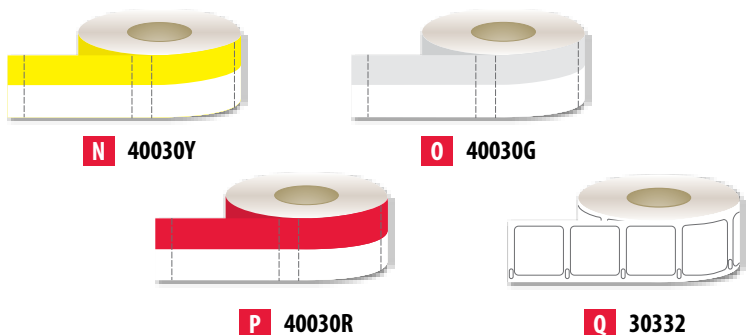


#### DYMO PAPER BIN TAGS

Our 1 1/4" x 2" Dymo Bin Tags are designed to save time by eliminating the use of adhesive. Each tag's overall size is 1 1/4" x 2 3/8". You may choose to remove the 3/8" tab or not. Compatible with Epicor and ECI RockSolid POS software. Can also be used with free Dymo software on any PC, if you do not have a POS system. Contact a Centurion Service Representative or go to [www.centurion-inc.com](http://www.centurion-inc.com) for instructions on how to set up your Dymo printer with Epicor software.

Item	Description	Adhesive	Labels/ Roll	Rolls/ Carton	Labels/ Carton	Price Per Carton
N	40030Y Yellow	None	500	10	5,000	92.75
O	40030G Gray	None	500	10	5,000	92.75
P	40030R Red	None	500	2	1,000	18.67

Core Size: I.D. 1 1/4" O.D. 3 3/8"



#### DYMO PRICING LABELS

Our Dymo Pricing Labels have permanent adhesive and are compatible with all Dymo LabelWriter printers.

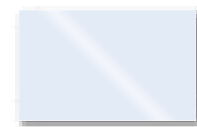
Item	Description	Adhesive	Rolls/ Box	Labels/ Box	Price Per Box
Q	30332 1" x 1" Pricing Label	Permanent	1	750	9.47

Core Size: I.D. 1 1/4" O.D. 3 3/8"

#### PRICE CHANNEL CHIPS

Our Price Channel Chips are 2" wide x 1 1/4" high to securely fit into your shelf channels. Holds and protects paper tags in shelf channels and allows easy movement of adhesive labels when placed directly on shelf channels.

Item	Description	Qty./ Package	Price Per 1,000				
			1	2	3	5	10
R	1191999 Clear Plastic	1,000	14.40	10.64	9.32	8.20	7.52



R 1191999

**MAKES CHANGING PRICING EASIER**

Contact a Centurion Service Representative for more information or for personalization/custom printing pricing.



# PRICING & TAGGING

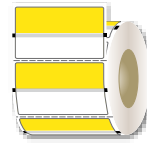
## ZEBRA LABELS & TAGS

### ZEBRA QL 320/420/QLn 420 PLUS BIN LABELS

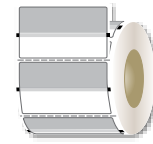
Our 1.93" x 1.12" Zebra QL 320/420/QLn 420 Plus Bin Labels are direct thermal labels available with permanent and removable adhesive. Compatible with Epicor, TransAct POS, J3 Systems and Paladin Software.

Item	Description	Adhesive	Rolls/ Package	Labels/ Roll	Labels/ Package	Price Per Package	
<b>A</b>	Z GEN-3	Half Yellow/Half White	Permanent	6	425	2,550	19.26
<b>B</b>	9069071	Half Yellow/Half White	Removable	8	400	3,200	28.80
<b>C</b>	9123290	Half Grey/Half White	Removable	8	400	3,200	28.80
<b>D</b>	9069071R	Half Red/Half White	Removable	8	400	3,200	28.80
<b>E</b>	Z GEN-5A	Notched Yellow	Permanent	6	425	2,550	19.26
<b>F</b>	Z TV-3N	True Value Warehouse	Permanent	6	425	2,550	19.26
<b>G</b>	727933	Notched Yellow with Border	Removable	6	425	2,550	45.24
<b>H</b>	Z TV-3W	True Value Warehouse	Permanent	6	425	2,550	19.26
<b>I</b>	Z TV-1	True Value with Border	Permanent	6	425	2,550	19.26
<b>J</b>	Z TV-1A	True Value Logo	Permanent	6	425	2,550	19.26
<b>K</b>	Z DIB-3	Do it Best Warehouse	Permanent	6	425	2,550	19.26

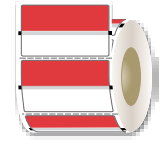
Core Size: I.D. 1 3/8" O.D. 2 5/8"



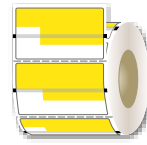
**A** Z GEN-3  
**B** 9069071



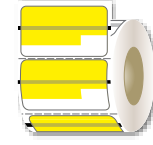
**C** 9123290



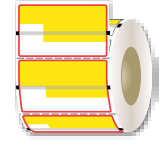
**D** 9069017R



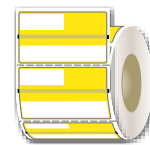
**E** Z GEN-5A



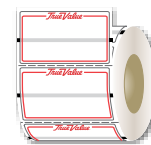
**F** Z TV-3N



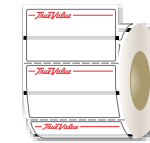
**G** 727933



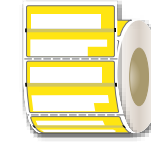
**H** Z TV-3W



**I** Z TV-1



**J** Z TV-1A



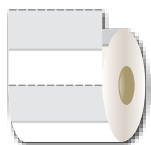
**K** Z DIB-3

### ZEBRA QL 320/420/420 PLUS PAPER BIN TAGS

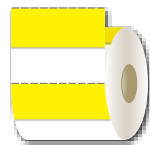
Our 2" x 1 1/4" Zebra QL 320/420/420 Plus Paper Bin Tags are a popular alternative to adhesive labels. Compatible with Epicor.

Item	Description	Adhesive	Labels/ Roll	Rolls/ Carton	Labels/ Carton	Price Per Carton	
<b>L</b>	9118415	Gray Paper Tag	None	585	6	3,510	33.48
<b>M</b>	9118415Y	Yellow Paper Tag	None	585	6	3,510	33.48
<b>N</b>	9118415LB	Light Blue Paper Tag	None	585	6	3,510	33.48
<b>O</b>	9118415GN	Green Paper Tag	None	585	6	3,510	33.48
<b>P</b>	9118415R	Red Paper Tag	None	585	6	3,510	33.48

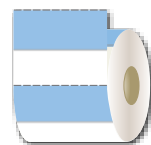
Core Size: I.D. 1 3/8" O.D. 2 5/8"



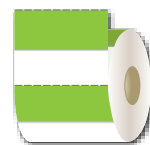
**L** 9118415



**M** 9118415Y



**N** 9118415LB



**O** 9118415GN



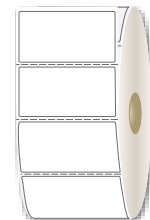
**P** 9118415R

### ZEBRA PRINTER BIN LABELS

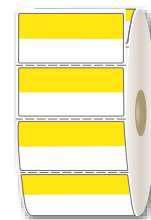
Our Zebra bin labels are direct thermal and work with printers LP2824/2844, G-Series (GK 420™, GX420/430™) and Z4M. These labels have a permanent adhesive and are easily separated due to the perforations between each label. Our labels are specifically designed to work with J3 POS, Pacsoft and TransAct POS software.

Item	Description	Color(s)	Labels/Roll	Price Per Roll	
<b>Q</b>	10010028	2" x 1" White Bin Label	White	2,340	17.95
<b>R</b>	10016245	2" x 1" Half Yellow/White	Yellow/White	2,340	23.95

Core Size: I.D. 1 3/8" O.D. 2 5/8"



**Q** 10010028



**R** 10016245

Contact a Centurion Service Representative for more information or for personalization/custom printing pricing.

Prices are subject to change without notice.

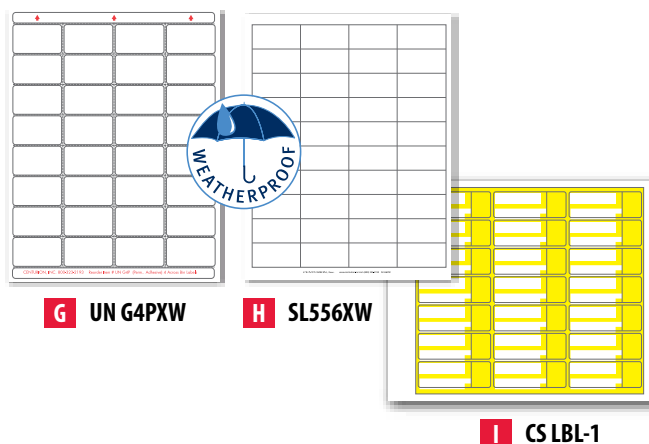
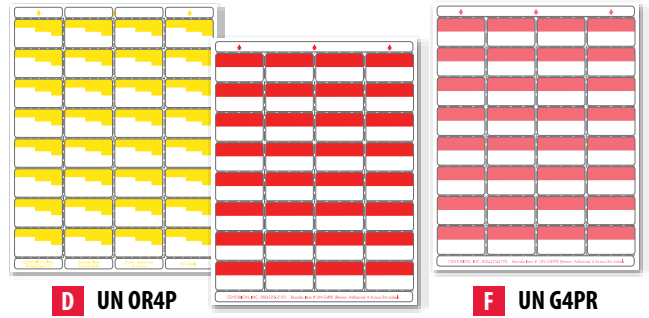


## LASER BIN LABELS

### LASER BIN LABELS

The following 8½" x 11" Laser Bin Labels are available in permanent adhesive. Individual labels are 1.93" x 1.125" and are compatible with Epicor, ECI RockSolid and TransAct POS software. Check your specific software for available templates.

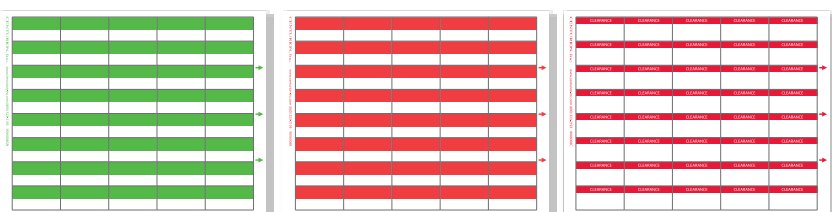
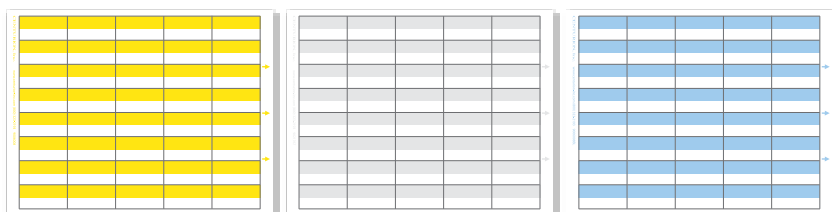
Item	Description	Labels/Sheet	Sheets/Package	Labels/Package	Price Per Package			
					1	2	3	4
A	UN G4P White	32	250	8,000	49.41	47.11	44.81	42.53
B	UN G4PY Half Yellow	32	250	8,000	49.41	47.11	44.81	42.53
C	UN DIB-4P White/Yellow	32	250	8,000	49.41	47.11	44.81	42.53
D	UN OR4P White/Yellow	32	250	8,000	49.41	47.11	44.81	42.53
E	UN G4PFR Half Red Fluorescent	32	250	8,000	49.41	47.11	44.81	42.53
F	UN G4PR Half Red	32	250	8,000	49.41	47.11	44.81	42.53
G	UN G4PXW Weatherproof Labels	32	100	3,200	75.00	—	—	—
H	SL556XW 2" x 1" Polyester Labels	40	100	4,000	47.00	—	—	—
I	CS LBL-1 White/Yellow	21	250	5,250	61.39	58.96	56.48	51.94



Our 11" x 8½" Laser Bin Labels are available in semi-permanent adhesive. Individual labels are 2" x 1". Compatible with Epicor and Paladin software. Centurion offers two styles of laser bin labels, each featuring a distinct combination of stock and adhesive to meet a wide variety of applications.

**Preferred** laser bin labels combine a paper stock and semi-permanent adhesive that make it well-suited for most applications. **Select** laser bin labels couple a fiber-impregnated latex stock and specialty adhesive that make it easier to remove and resistant to moisture and abrasion.

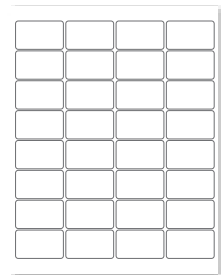
Item	Description	Adhesive	Labels/Sheet	Sheets/Package	Labels/Package	Price Per Package
J	9006008 Yellow Preferred	Semi-Permanent	40	250	10,000	23.44
K	9006008L Yellow Select	Removable	40	250	10,000	53.70
L	9021767 Gray Preferred	Semi-Permanent	40	250	10,000	23.44
M	9021767L Gray Select	Removable	40	250	10,000	53.70
N	9006008BL Blue Preferred	Semi-Permanent	40	250	10,000	23.44
O	9006008GN Green Preferred	Semi-Permanent	40	250	10,000	23.44
P	9006008R Red Preferred	Semi-Permanent	40	250	10,000	23.44
Q	9006008C Clearance Preferred	Semi-Permanent	40	250	10,000	23.44



### LASER RELEASE LABELS

Our 2" x 1-1/8" Laser Release Labels allow any user to upgrade their peghooks with Label Release. Simply place the Label Release on the label holder and you can now label your peghook with a permanent adhesive label and it will remove just like a removable adhesive label.

Item	Description	Labels/Sheet	Sheets/Package	Labels/Package	Price Per Package
R	LR LABELS 2" x 11/8"	32	100	3,200	42.00





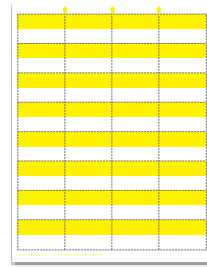
# PRICING & TAGGING

## LASER BIN TAGS

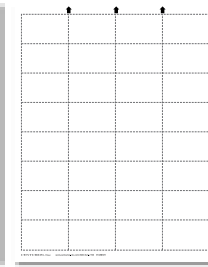
### LASER PAPER BIN TAGS

Our 2" x 1 1/4" Laser Paper Bin Tags are a popular alternative to adhesive labels. Compatible with Epicor.

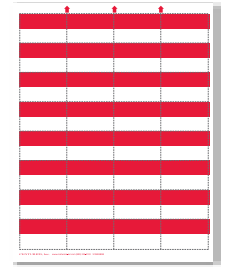
Item	Description	Adhesive	Labels/Sheet	Sheets/Package	Labels/Package	Price Per Package
R	9108838Y Yellow Paper Tag	None	32	250	8,000	17.06
S	9108838 Gray Paper Tag	None	32	250	8,000	17.06
T	9108838W White Paper Tag	None	32	250	8,000	17.06
U	9108838GN Green Paper Tag	None	32	250	8,000	17.06
V	9108838R Red Paper Tag	None	32	250	8,000	17.06



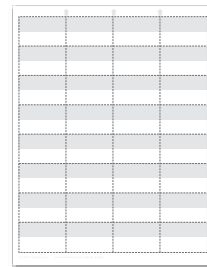
R 9108838Y



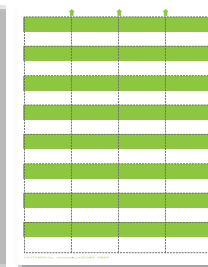
T 9108838W



V 9108838R



S 9108838



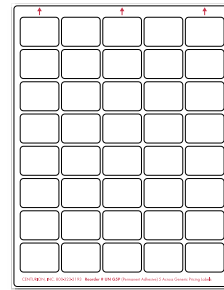
U 9108838GN

## PRICING LABELS

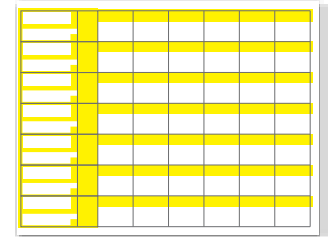
### LASER PRICING LABELS

Our Laser Pricing Labels are the perfect fit for all your pricing needs. Compatible with Epicor, ECI RockSolid POS and any custom label software. Check your specific software for available templates.

Item	Description	Adhesive	Labels/Sheet	Sheets/Package	Labels/Package	Price Per Package			
						1	2	3	4
A	UN GSP Pricing	Permanent	40	250	10,000	44.82	42.73	40.65	38.57



A UN GSP

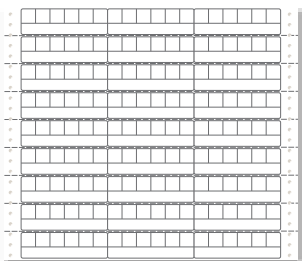


B CS LBL-2  
1 1/2" x 1 1/4"

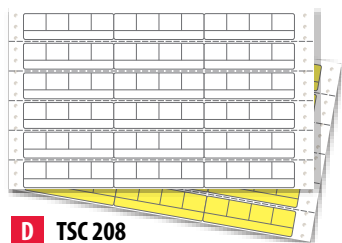
### LASER BIN/PRICING LABELS

Our Laser Pricing Labels are the perfect fit for all your pricing needs. Compatible with Epicor, ECI RockSolid POS and any custom label software. Check your specific software for available templates.

Item	Description	Adhesive	Labels/Sheet	Sheets/Package	Labels/Package	Price Per Package			
						1	2	3	4
B	CS LBL-2 Do it Best Bin	Permanent	7 Sets	250	1,750	97.44	84.46	81.20	77.96



C TSC 108



D TSC 208

E TSY 208

### CONTINUOUS PRICING LABELS

Our Continuous Pricing Labels are permanent adhesive and designed for the Epicor Software.

Item	Description	Adhesive	Labels/ Carton	Price Per Carton
C	TSC 108 3 Sets of 6 White Labels	Permanent	90,000	125.80
D	TSC 208 3 Sets of 4 White Labels	Permanent	60,000	136.67
E	TSY 208 3 Sets of 4 Yellow Labels	Permanent	60,000	151.37

Contact a Centurion Service Representative for more information or for personalization/custom printing pricing.

Prices are subject to change without notice.



## MONARCH® SUPPLIES

### AVERY DENNISON® MONARCH® COMPATIBLE LABELS

Our Avery Dennison® Monarch® Compatible Labels are available with permanent adhesive for the most popular labelers. The 1110/1115 compatible labels contain security slits in the label that will deter price switching and will tear when removal is attempted. The 1136 compatible labels are designed to print up to an 8 digit SKU to assist managing shelf inventory. All packages contain 1 ink roller. Contact a Centurion Service Representative for pricing on custom printed labels with your logo or special copy.

Item	Model	Copy	Label Color	Labels / Roll	Rolls / Package	Labels / Package	Price Per Package	
A	1110WINK	1110	None	White	1,063	16	17,008	18.50
B	1115WINK	1115	None	White	1,500	10	15,000	18.28
C	1115RINK	1115	None	Red	1,500	10	15,000	31.17
D	1115RSINK	1115	Sale	Red	1,500	10	15,000	31.17
E	1115DIB	1115	Do it Best	White	1,500	10	15,000	31.17
F	1115DIC	1115	Do it Center	White	1,500	10	15,000	31.17
G	1131WINK	1131	None	White	2,500	8	20,000	18.60
H	1131RINK	1131	None	Red	2,500	8	20,000	18.60
I	1131RSINK	1131	Sale	Red	2,500	8	20,000	21.73
J	1131WAINK	1131	Ace	White	2,500	8	20,000	21.73
K	1136WINK	1136	None	White	1,750	8	14,000	28.67
L	1136RINK	1136	None	Red	1,750	8	14,000	28.67
M	1136RSINK	1136	Sale	Red	1,750	8	14,000	28.67
N	1136WAINK	1136	Ace	White	1,750	8	14,000	28.67
O	1136DIB	1136	Do it Best	White	1,750	8	14,000	28.67
P	1136DIC	1136	Do it Center	White	1,750	8	14,000	28.67

0903 - 35

5 FOR \$2.95 +TX

**A 1110WINK**

0903 - 57

2 FOR \$7.95 +TX

**B 1115WINK**

0627 - 08

**SALE**

5 FOR \$2.95 +TX

**D 1115RSINK**

0627 - 08

**Best**

10 FOR \$4.50 +TX

**E 1115DIB**

0627 - 08

**Do it Center**

3 FOR \$2.95 +TX

**F 1115DIC**

\$ 16.20 FOOT

**G 1131WINK**

\$ 5.25 PKG

**H 1131RINK**

**SALE**

\$ 119.75 EACH

**I 1131RSINK**

**ACE**

\$ 124.95 CASE

**J 1131WAINK**

992585

\$ 6.95 EACH

**K 1136WINK**

627595

\$ 275.15 EACH

**L 1136RINK**

496751

**SALE**

\$ 12.99 +TX

**M 1136RSINK**

99004524

**ACE**

\$ 104.75 EACH

**N 1136WAINK**

991951

**Best**

\$ 146.95 BOX

**O 1136DIB**

991951

**Do it Center**

\$ 14.50 +TX

**P 1136DIC**

### AVERY DENNISON® MONARCH® LABELERS

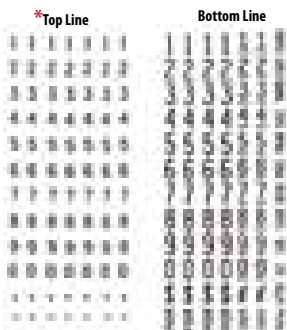
The Avery Dennison® Monarch® Labelers are the most popular labelers and are reliable, fast and efficient for all your labeling needs.

Item	Model/Description	Characters Top	Per Line Bottom	Price Per Each	
A	1115-06	1115-06 2 Line Price Gun	7	7	125.00
B	1131-01	1131-01 1 Line Price Gun	-	8	85.00
C	1136-01	1136-01 2 Line Price Gun	8	8	125.00

Find compatible Monarch® labels on page 8.



**A 1115-06**  
2 Lines  
Prints 14 Positions



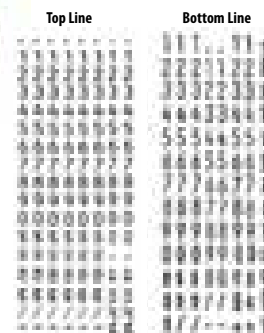
Top Line positions 4-7 are \*Cost Code bands with alpha characters.



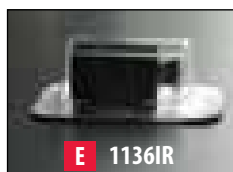
**B 1131-01**  
Single Line  
Prints 8 Positions



**C 1136-01**  
2 Lines  
Prints 16 Positions



**D 1115IR**



**E 1136IR**

### AVERY DENNISON® MONARCH® COMPATIBLE INK ROLLERS

Our Avery Dennison® Monarch® Compatible Ink Rollers are designed to be used with the Monarch® 1115, 1131 or 1136 labelers. 4 rollers per package.

Item	Model	Rollers / Package	Price Per Package
D	1115IR	4	13.00
E	1136IR	4	17.16

Contact a Centurion Service Representative for more information or for personalization/custom printing pricing. ☎



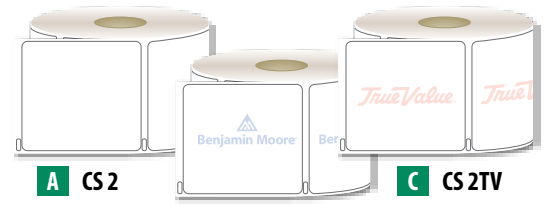
# IN STORE PRODUCTS

## PAINT FORMULA LABELS

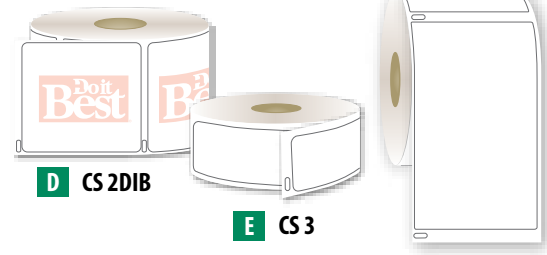
### DYMO PAINT FORMULA LABELS

Our Dymo Paint Formula Labels are the most popular paint formula labels around and are compatible with all models of Dymo LabelWriter printers.

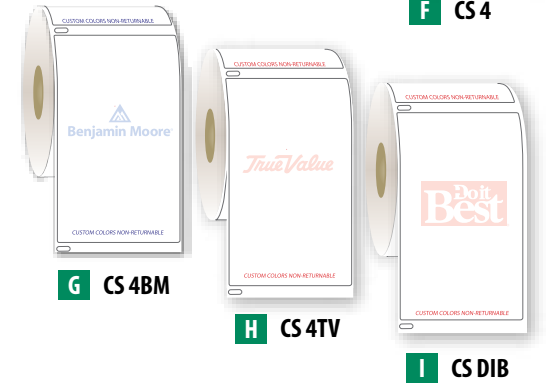
Item	Description	Adhesive	Labels/ Roll	Rolls/ Box	Labels/ Box	Price Per Box					
						1	5	10	20		
A	CS 2	2 1/8" x 2 3/4"	Dymo 30258	Permanent	400	1	400	14.06	10.07	7.81	6.38
B	CS 2BM	2 1/8" x 2 3/4"		Permanent	400	1	400	14.06	10.07	7.81	6.38
C	CS 2TV	2 1/8" x 2 3/4"		Permanent	400	1	400	14.06	10.07	7.81	6.38
D	CS 2DIB	2 1/8" x 2 3/4"		Permanent	400	1	400	14.06	10.07	7.81	6.38
E	CS 3	1 1/8" x 3 1/2"	Dymo 30252	Permanent	350	2	700	19.06	13.60	10.59	8.66
F	CS 4	2 5/16" x 4"	Dymo 30256	Permanent	300	1	300	16.07	11.47	8.93	7.30
G	CS 4BM	2 5/16" x 4"		Permanent	300	1	300	16.07	11.47	8.93	7.30
H	CS 4TV	2 5/16" x 4"		Permanent	300	1	300	16.07	11.47	8.93	7.30
I	CS 4DIB	2 5/16" x 4"		Permanent	300	1	300	16.07	11.47	8.93	7.30
J	30859	2 1/4" x 3 1/8"	Dymo 30859	Permanent	400	1	400	20.44	14.59	11.35	9.29
K	30859 BM	2 1/4" x 3 1/8"		Permanent	400	1	400	20.44	14.59	11.35	9.29



A CS 2 B CS 2BM C CS 2TV



D CS 2DIB E CS 3 F CS 4



G CS 4BM H CS 4TV I CS 4DIB

CALL FOR LARGE VOLUME PRICING!

(800) 323-2193

30859 & 30859 BM LABELS FIT QUART & GALLON LIDS!



J 30859 K 30859 BM

## DYMO PRINTERS

### DYMO PRINTERS AND ACCESSORIES

Our Dymo LabelWriter Printers create superior bin, pricing and paint formula labels and labels for brochures, envelopes, (you name it!) directly from your computer. With their direct thermal printing, they eliminate the need for ribbons or toner cartridges. All of our Dymo printers come with stand alone software (Mac & PC compatible) that will allow you to print bin and pricing labels if you don't already do this with a point of sale system. Compatible with Epicor.

Item	Model #/ Description	Price Per Each
A	1752265 Dymo LabelWriter 450 Turbo	130.00
B	1752264 Dymo LabelWriter 450	110.00
C	95175-001 Dymo Replacement Spindle	12.00



A 1752265 B 1752264

Our Dymo LabelWriter Cleaning Cards will keep your print head clean, enhance its performance and extend its life.

Item	Description	Qty./Package	Price Per Package
D	LW 1 Dymo LabelWriter Cleaning Card	5	7.21 5.99



C 95175-001



D LW 1

Contact a Centurion Service Representative for more information or for personalization/custom printing pricing.

Prices are subject to change without notice.





## CUSTOM PAINT FORMULA LABELS



Centurion's new line of custom paint formula labels transform stock paint labels from informational stickers to important store branding, marketing and sales tools.

What can this mean for your store? It can increase store name recognition, reinforce store brand loyalty and even generate increased new and referral business.

### CUSTOM PAINT FORMULA LABELS

Centurion's custom paint formula labels are available in three sizes. There is a minimum order of 100 rolls. Pricing is for 1, 2 and 3 color imprints on your paint formula labels. Contact a Centurion Service Representative to discuss your specific needs.

Item	No. of Colors	Labels Per Roll	Size	Price Per Roll		Item	No. of Colors	Labels Per Roll	Size	Price Per Roll		Item	No. of Colors	Labels Per Roll	Size	Price Per Roll	
				100	200					100	200					100	200
CS 2P1	1	400	2-1/8 x 2-3/4	5.44	5.26	CS 4P1	1	300	2-5/16 x 4	6.17	5.96	30859 P1	1	400	2-1/4 x 3-1/8	8.00	7.66
CS 2P2	2	400	2-1/8 x 2-3/4	5.44	5.26	CS 4P2	2	300	2-5/16 x 4	6.17	5.96	30859 P2	2	400	2-1/4 x 3-1/8	8.00	7.66
CS 2P3	3	400	2-1/8 x 2-3/4	5.44	5.26	CS 4P3	3	300	2-5/16 x 4	6.17	5.96	30859 P3	3	400	2-1/4 x 3-1/8	8.00	7.66

Contact a Centurion Service Representative for more information or for personalization/custom printing pricing.



# IN STORE PRODUCTS

## CUSTOMIZED BAGS

### BETTER MARKET YOUR STORE!

Your store bags can do a lot more than hold the items your customers purchase. Customize them and your bags become powerful marketing tools. When your customers leave with your bags, your store name and your brand travel right into the community. Think of your customers and your bags as personal endorsements and walking advertisements for your store.

Now, you not only can add your store name, locations and hours to you bags, but also any other message you want— upcoming sales, limited time discounts, other special promotions or demonstrations. Absolutely anything.

The bags are available in paper and plastic. They come in the familiar sizes you use every day.



**A** 7181222



### PLASTIC "T-SHIRT" BAGS

Our plastic t-shirt bags are 12 x 7 x 22.7 mil in size and white in color. Price is per 1,000 - 1 or 2 color print, single side. Plates are an additional \$115 per color.

Item	Description	Price Per 1,000			
		5,000	10,000	25,000	50,000
	12 x 7 x 22.7 mil White HDPE				
<b>A</b> 7181222P1	1 Color / Single Side	162.00	119.00	89.00	CALL
7181222P2	2 Color / Single Side	191.00	129.00	92.00	CALL

### KRAFT PAPER BAGS

Our paper bags are a natural kraft color and come in a few sizes listed below. Price per Case of 250 - 1 or 2 color print, single side. First plate is FREE and the second plate is \$75 additional.

Item	Description	Price Per 250			
		2	4	20	40
<b>B</b> 7181013P	10 x 5 x 13.5 Natural Kraft	86.00	82.00	79.00	68.00
7181317P	13 x 7 x 17.5 Natural Kraft	108.00	99.00	96.00	89.00
7181315P	13 x 6 x 15.75 Natural Kraft	108.00	99.00	96.00	89.00



**B** 7181013P  
7181317P  
7181315P

## RECLOSABLE BAGS

### PLASTIC BAGS

Our clear recloseable bags are made of virgin polyethylene and meet all USDA and FDA requirements. Each bag features a prime quality zip that will protect its contents and a hang hole for easy display.

Item	Description	Size	Qty./Package	Price Per Package (100)
<b>A</b> 1176	Clear Plastic Bag	2" x 2"	100	2.06
1177	Clear Plastic Bag	2" x 3"	100	2.08
1178	Clear Plastic Bag	3" x 4"	100	2.85
1179	Clear Plastic Bag	3" x 5"	100	3.27
1180	Clear Plastic Bag	4" x 4"	100	3.61
1163	Clear Plastic Bag	4" x 6"	100	4.25
1183	Clear Plastic Bag	6" x 9"	100	7.86
1186	Clear Plastic Bag	9" x 12"	100	11.38



**A** CLEAR PLASTIC BAGS



## TAGS

### NON-PERSONALIZED REPAIR TAG

Our 2½" x 5¼" Non-Personalized Repair Tag is designed to meet every need. Sequentially numbered on both the repair tag and the claim stub.

Item	Description	Pre-Strung With	Qty./Box	Price Per Box
A 397064	Repair Tag	String	1,000	53.04

### REPAIR TAGS

Our 3½" x 9" Personalized Repair Tags are carbonless and pre-numbered in 3 positions with detachable claim stub. No choice of numbering. All tags are pre-strung with string. Personalization is available on tag and stub, in black ink only.

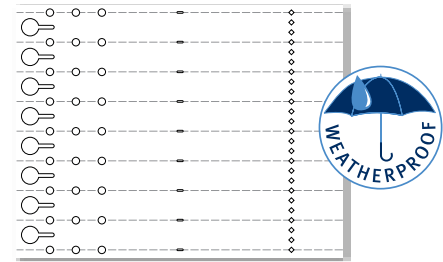
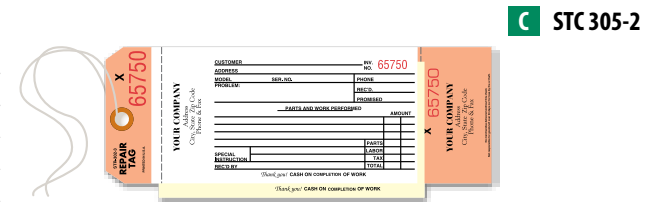
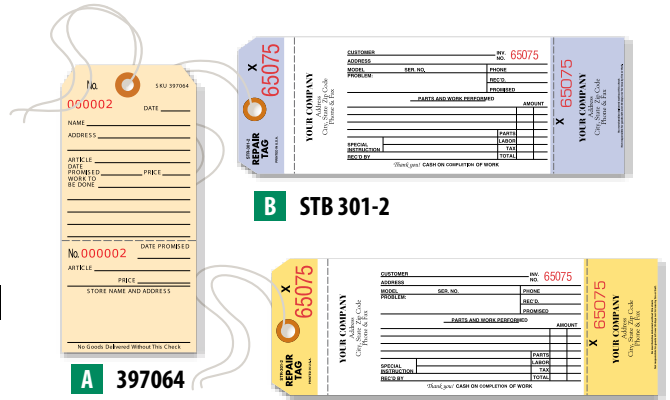
Item	No. of Parts	Colors	Price Per Lot		Price Per 1,000	
			500	1,000	2,000	2,000
B STB 301-2	2	White/Blue	140.17	241.22	219.28	219.28
C STC 305-2	2	White/Yellow	140.17	241.22	219.28	219.28
D STR 302-3	3	White/Canary/Salmon	151.30	262.98	237.61	237.61

### TREE TAGS

Compatible with and designed to be used with your Epicor system or manually with a permanent marker to tag trees or any other object you choose (lawn mowers, snowblowers, etc.). They easily slip around and lock into position. Add your SKU number on the tear-off strip and ring up a quick and easy sale at your register. Our Laser Printable Slip-On® Tree Tags are made with a 5 mil material that is top coated on both sides to provide superior imaging and longevity outdoors. This economically priced laser printable material is viable for all of your monochrome laser printing applications, and can also be used for many of your color printing applications as well. The Slip-On® tags may be preprinted with information such as company name, website and logo for maximizing company visibility.

Item	Size	Tags/ Sheets/ Package	Price Per Package				
			1	2	3	4	8+
E LT 1011S	1" x 11"	8 25	28.00	26.00	24.00	22.00	18.00

25 sheets per package (200 tags)



F LT 1011S  
8½" x 11"

Contact a Centurion Service Representative for more information or for personalization/custom printing pricing.



## RECEIPT ROLLS

### PAPER RECEIPT PRINTER ROLLS

Our wide variety of Paper Receipt Printer Rolls are compatible with most of the popular receipt printers and come in 1 and 2 ply. Contact a Centurion Service Representative for help in determining which receipt printer roll best meets your needs.

Item	Roll Size	No. of Parts	Feet/ Roll	Rolls/ Carton	Price Per Carton			
					1	3	5	10
A 00963	3" x 3 3/8"	1	195	50	49.23	48.18	47.13	45.81
B GEN 99	3 1/4" x 3 1/2"	1	250	48	46.32	44.68	42.75	41.11
C DB 99	3 1/4" x 3 1/2"	1	250	48	60.70	59.69	58.70	56.73
D DC 99	3 1/4" x 3 1/2"	1	250	48	56.25	55.32	54.40	52.57
E GEN 110	3 1/4" x 3"	2	100	48	51.79	50.87	49.93	48.07
F DB 110	3 1/4" x 3"	2	100	48	57.07	56.13	55.19	53.33
G DC 110	3 1/4" x 3"	2	100	48	57.07	56.13	55.19	53.33



**A 00963** 3" x 3 3/8"  
**B GEN 99** 3 1/4" x 3 1/2"  
**C DB 99** 3 1/4" x 3 1/2"  
**D DC 99** 3 1/4" x 3 1/2"



**E GEN 110** 3 1/4" x 3"  
**F DB 110** 3 1/4" x 3"  
**G DC 110** 3 1/4" x 3"

### THERMAL RECEIPT PRINTER ROLLS

Our BPA Free Thermal Receipt Rolls can be used with a variety of thermal printers. Sizes and rolls per carton vary.

Item	Roll Size	No. of Parts	Feet/ Roll	Rolls/ Carton	Price Per Carton			
					1	3	5	10+
H GEN 900	3 1/8" x 3"	1	230	50	86.00	84.46	82.98	81.55
I GEN 901	3 1/8" x 3 1/4"	1	275	50	111.86	110.06	108.28	103.36
J GEN 902	3 1/8" x 2"	1	95	24	25.45	24.92	24.66	22.83
K GEN 800	2 1/4" x 1 7/8"	1	80	24	25.34	-	-	-
L GEN 801	2 1/4" x 2 7/8"	1	218	50	79.52	-	-	-
M GEN 802	2 1/4" x 1 1/2"	1	55	50	24.92	-	-	-



**H GEN 900** 3 1/8" x 3"  
**I GEN 901** 3 1/8" x 3 1/4"  
**J GEN 902** 3 1/8" x 2"



**K GEN 800** 2 1/4" x 1 7/8"  
**L GEN 801** 2 1/4" x 2 7/8"  
**M GEN 802** 2 1/4" x 1 1/2"

## SIGNATURE CAPTURE MACHINE SUPPLIES

### SIGNATURE CAPTURE SCREEN PROTECTORS

Our Screen Protectors work with Ingenico, Verifone and Topaz Signature Capture Machines. Protects against scratching or pitting the glass screen.

Item	Compatible Machine Model #	Qty./ Package	Price Per Package	
			1	10+
A NU0241	Topaz T-5460-BR/T-5460-HS/T-L462-HSB Signature Capture Machines	1	3.55	3.25
B NU2501	ingenico iSC Touch 250 Signature Capture Machine	5	50.01	-
C NU3001	Verifone MX915 Signature Capture Machine	3	18.20	17.60



**A NU0241**



**B NU2501**



**C NU3001**

### SIGNATURE CAPTURE PENS

OEM replacement stylus pen for VeriFone MX 915, the Ingenico ISC 250, and eN-Touch 1000. Plug and play compatible. Simply power your unit off by disconnecting power. Unclip the stylus pen from your terminal and plug in replacement stylus.

Item	Compatible Machine Model #	Price Per Each		
		1	2	5
D 4007100	Verifone Mx 915	18.25	-	-
E 4007200	ingenico ISC 250-350	19.95	-	-
F SEN351495	ingenico eN-Touch 1000/i6550/i6780	31.50	30.00	29.25



**D 4007100**  
**E 4007200**



**F SEN351495**

Contact a Centurion Service Representative for more information or for personalization/custom printing pricing.

Prices are subject to change without notice.



## FORMS

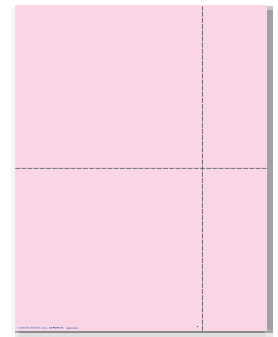
### EPICOR LASER INVOICE

Epicor Laser Invoices are all 8-1/2" x 11" and come in multiple formats to accommodate your specific needs. This invoice has an important security feature built into the back that color copiers cannot replicate. Personalized invoices are available on a custom basis.

Item	Description	Qty/ Carton	Price Per Carton				
			1	4	6	8	10
A	TV 103-L Free Form Laser Invoice	1,000	27.75	26.40	25.64	24.92	24.25



**A TV 103-L**

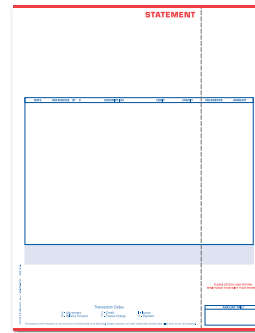


**B GEN 125-P**

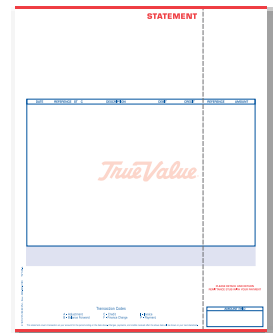
### EPICOR LASER STATEMENTS

Our Non-branded Epicor Laser Statement is a single part, pre-printed statement with terms on the back. Also available with a True Value logo. Statement can fold in half to fit our T8001 envelope or tri-fold into a #10 window envelope.

Item	Description	Qty/ Carton	Price Per Carton				
			1	4	6	8	10
B	GEN 125-P Pink Non-branded Laser Statement	1,000	32.36	28.21	25.89	24.31	22.87
C	GEN 125-L Non-branded Laser Statement	1,000	35.23	34.06	33.12	32.21	31.34
	GEN 125-LP* Personalized Non-branded Laser Statement	1,000	74.93	64.85	61.90	60.42	58.59
D	TV 125-L 1 Part TV Laser Statement	1,000	35.23	34.06	33.12	32.21	31.34
	TV 125-LP* Personalized TV Laser Statement	1,000	75.26	65.18	62.23	60.74	58.90



**C GEN 125-L**



**D TV 125-L**

Minimum stock order – 1 carton 1,000 forms. \*Minimum personalized order – 2 cartons 2,000 forms.

### EPICOR LASER STATEMENT ENVELOPES

Our Epicor Laser Statement Envelopes are just the right fit for our Epicor Laser Statements (simply fold in half). Available with dry gum adhesive or self seal adhesive, which helps reduce the time you spend stuffing monthly statements. Personalization available in 1 or 2 colors. Choose from red, blue or black ink.

Item	Description	No. of Colors	Sealing Option	Price Per 1,000			
				1,000	2,500	5,000	10,000
E	T8001 P1 Printed Epicor Laser Stmt. Env.	1	Dry Gum	112.87	87.84	79.74	76.81
	T8001 P2 Printed Epicor Laser Stmt. Env.	2	Dry Gum	130.42	103.32	91.21	88.29
	T8001 SSP1 Printed Self Seal Laser Stmt. Env.	1	Self Seal	148.98	120.33	106.19	100.77
	T8001 SSP2 Printed Self Seal Laser Stmt. Env.	2	Self Seal	165.85	143.91	129.02	108.66

Our 6" x 9" Non-branded Epicor Laser Statement Window Envelope allows the return address printed on the Epicor Statement to show through the same window as the delivery address. Available in Dry Gum adhesive and Self Sealing adhesive.

Item	Logo	Sealing Option	Qty/ Box	Price Per Box of 500				
				1	2	5	10	20
F	9161548GEN Non-branded	Dry Gum	500	40.03	35.93	35.02	31.14	28.59
	9161548SSG Non-branded	Self Seal	500	58.76	55.43	53.42	51.55	48.98
G	9161548TV True Value	Dry Gum	500	40.03	35.93	35.02	31.14	28.59
	9161548SST True Value	Self Seal	500	58.76	55.43	53.42	51.55	48.98
H	9161548 Ace	Dry Gum	500	40.03	35.93	35.02	31.14	28.59
	9161548SS Ace	Self Seal	500	58.76	55.43	53.42	51.55	48.98

### E T8001

Overall Size 5 1/4" x 8 7/8"  
 Stock 24# White Wove  
 Envelopes Per Box 500  
 Quantity Per Carton 2,500



### F-H 9161548GEN/ 9161548SSG

Overall Size 6" x 9"  
 Stock 24# White Wove  
 Envelopes Per Box 500

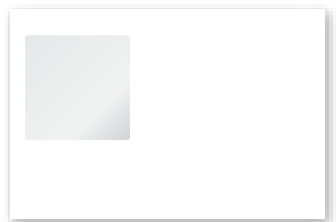


### ECi/ROCKSOLID POS STATEMENT ENVELOPES

Our 6" x 9" RockSolid POS Statement Envelope is available dry gum adhesive and self seal. These envelopes allow the return address printed on the RockSolid POS Statement to show through the same window as the delivery address.

Item	Description	Sealing Option	Qty/ Box	Price Per Box of 500			
				1	2	5	10
I	RS 8001 RockSolid POS Stmt. Env.	Dry Gum	500	48.43	43.11	39.75	36.85
	RS 8001SS RockSolid POS Stmt. Env. Self Seal	Self Seal	500	69.20	60.76	56.63	51.90

**PLEASE NOTE:** Self seal envelopes have a shelf life of approximately 12 months.



### I RS 8001/RS 8001SS

Overall Size 6" x 9"  
 Stock 24# White Wove  
 Envelopes Per Box 500

Contact a Centurion Service Representative for more information or for personalization/custom printing pricing.



# GENERAL STORE OPERATIONS

## LASER CHECKS

Our 8½" x 11" single part Laser Checks are laser printer compatible and printed in blue ink. Our EGL 101-LP is designed for use as an Epicor Accounts Payable Check. The LGPC-9499 is formatted as the ECI RockSolid POS/QuickBooks General Purpose Check. Our laser checks are designed to fit our #10 Window Envelopes. Personalization and numbering available in black ink only.

Item	Software	Price Per Lot			Price Per 1,000		
		250	500	1,000	2,000	3,000	5,000
J EGL 101-LP	Epicor	—	—	115.68	93.17	87.92	—
K LGPC 9499	QuickBooks/ Microsoft Money	73.55	87.24	118.80	104.22	80.90	65.38

## #10 WINDOW ENVELOPES

Our #10 Window Envelopes are standard sized and the most commonly used envelopes. Ideal for many uses, including a check envelope. Available with dry gum adhesive or self seal adhesive, which helps reduce the time you spend stuffing and sealing. Personalization available in 1 or 2 colors. Choose from red, blue or black ink.

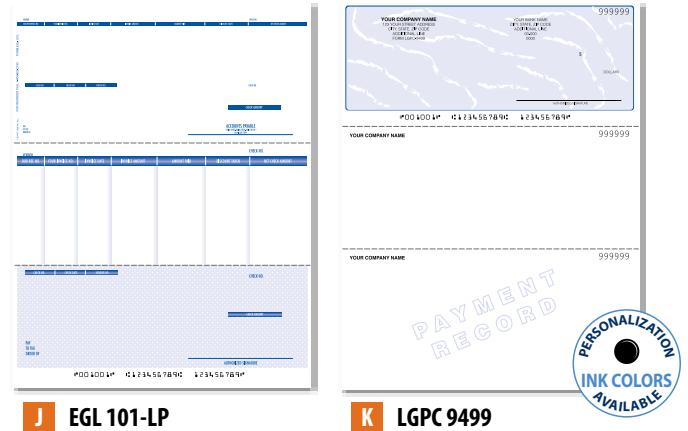
Item	No. of Colors	Sealing Option	Price Per 1,000			
			1,000	2,500	5,000	10,000
L 10 WDOP1	1	Dry Gum	65.88	58.72	52.32	49.94
10 WDOP2	2	Dry Gum	75.26	68.69	60.14	56.54
10 WDOSSP1	1	Self Seal	152.70	144.09	120.54	114.09
10 WDOSSP2	2	Self Seal	188.47	152.93	147.29	132.40

## EPICOR CONTINUOUS RETAIL INVOICES

Our 3 part and 4 part Epicor Retail Invoices are available as a branded stock item with either an Ace, Do it Best or True Value logo or as a non-branded stock item. They can also be personalized with your individual store's logo, name, address, etc. in blue or black inks. Contact a Centurion Service Representative for more information.

Item	Logo	No. of Parts	Stock/ Personalized*	Price Per Carton				
				1-3	4-5	6-7	8-9	10+
O	GEN 103-2	Non-branded	2 Stock	59.81	55.01	50.87	49.42	48.71
	GEN 103-2P	Non-branded	2 Personalized*	100.32	76.43	72.50	70.04	68.20
P	TV 103-2	True Value	2 Stock	59.81	55.01	50.87	49.42	48.71
	TV 103-2P	True Value	2 Personalized*	100.32	76.43	72.50	70.04	68.20
Q	ACE 103-2	Ace	2 Stock	59.81	55.01	50.87	49.42	48.71
	ACE 103-2P	Ace	2 Personalized*	100.32	76.43	72.50	70.04	68.20
R	DIB 103-2	Do It Best	2 Stock	59.81	55.01	50.87	49.42	48.71
	DIB 103-2P	Do It Best	2 Personalized*	100.32	76.43	72.50	70.04	68.20
S	GEN 103-3	Non-branded	3 Stock	74.40	65.99	63.94	62.49	61.09
	GEN 103-3P	Non-branded	3 Personalized*	115.13	91.78	86.14	84.73	82.61
T	TV 103-3	True Value	3 Stock	74.40	65.99	63.94	62.49	61.09
	TV 103-3P	True Value	3 Personalized*	115.13	91.78	86.14	84.73	82.61
U	CTV 103-3	Tru Trac	3 Stock	74.40	65.99	63.94	62.49	61.09
	CTV 103-3P	Tru Trac	3 Personalized*	115.13	91.78	86.14	84.73	82.61
V	ACE 103-3	Ace	3 Stock	74.40	65.99	63.94	62.49	61.09
	ACE 103-3P	Ace	3 Personalized*	115.13	91.78	86.14	84.73	82.61
W	DIB 103-3	Do It Best	3 Stock	74.40	65.99	63.94	62.49	61.09
	DIB 103-3P	Do It Best	3 Personalized*	115.13	91.78	86.14	84.73	82.61
X	GEN 103-4	Non-branded	4 Stock	97.60	91.98	90.64	88.99	87.28
	GEN 103-4P	Non-branded	4 Personalized*	138.32	112.03	107.42	104.35	103.51
Y	TV 103-4	True Value	4 Stock	97.60	91.98	90.64	88.99	87.28
	TV 103-4P	True Value	4 Personalized*	138.32	112.03	107.42	104.35	103.51
Z	9005794	Ace	4 Stock	97.60	91.98	90.64	88.99	87.28
	9005794P	Ace	4 Personalized*	138.32	112.03	107.42	104.35	103.51

Minimum stock order – 1 carton 1,000 forms. \*Minimum personalized order – 2 cartons 2,000 forms



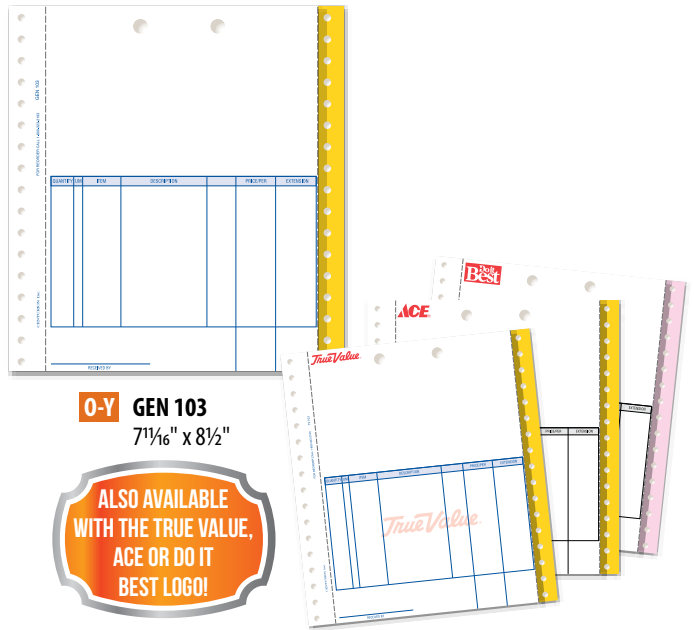
J EGL 101-LP

K LGPC 9499



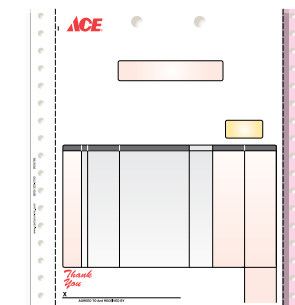
L 10 WDO

Overall Size 4½" x 9½"  
Stock 24# White Wove  
Quantity Per Box 500 Envelopes  
Quantity Per Carton 2,500 Envelopes



O-Y GEN 103 7 1/16" x 8 1/2"

ALSO AVAILABLE WITH THE TRUE VALUE, ACE OR DO IT BEST LOGO!



Z 9005786/9005794

MOST OF OUR FORMS ARE AVAILABLE IN 2, 3 AND 4 PARTS.

PAPER COLOR SEQUENCE WHITE/CANARY/PINK/GOLDENROD

Contact a Centurion Service Representative for more information or for personalization/custom printing pricing.

Prices are subject to change without notice.



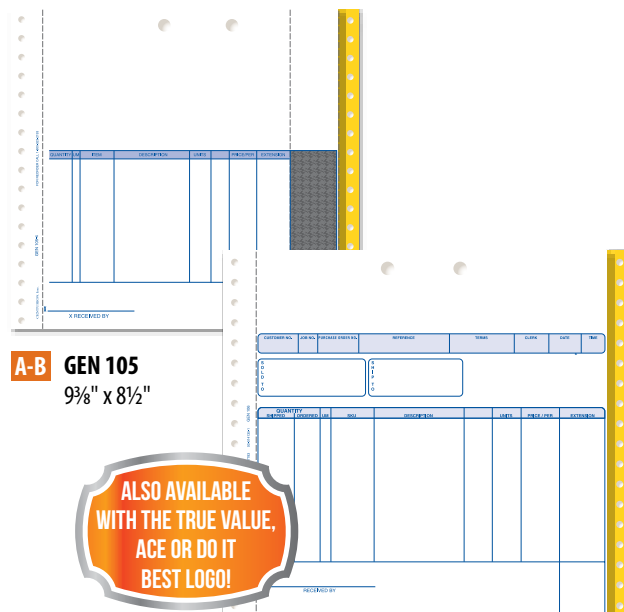
## EPICOR CONTINUOUS STANDARD CONTRACTOR INVOICES

Our 3 or 4 part Epicor Continuous Standard Contractor Invoices are available as a non-branded stock item. They can also be personalized with your individual store's logo, name, address, etc. in blue or black inks. Contact a Centurion Service Representative for more information.

Item	No. of Parts	Stock/ Personalized*	Price Per Carton					
			1	4	6	8	10	
A	GEN 105-3	3	Stock	99.04	96.08	94.67	93.30	91.97
	GEN 105-3P	3	Personalized*	157.77	116.11	113.49	112.18	108.30
B	GEN 105-4	4	Stock	119.96	116.38	111.39	109.82	127.19
	GEN 105-4P	4	Personalized*	182.50	139.52	134.85	131.61	127.19

PAPER COLOR SEQUENCE  
WHITE/CANARY/PINK/GOLDENROD

Minimum stock order – 1 carton 1,000 forms  
\*Minimum personalized order – 2 cartons 2,000 forms



**A-B GEN 105**  
9 3/8" x 8 1/2"

ALSO AVAILABLE WITH THE TRUE VALUE, ACE OR DO IT BEST LOGO!

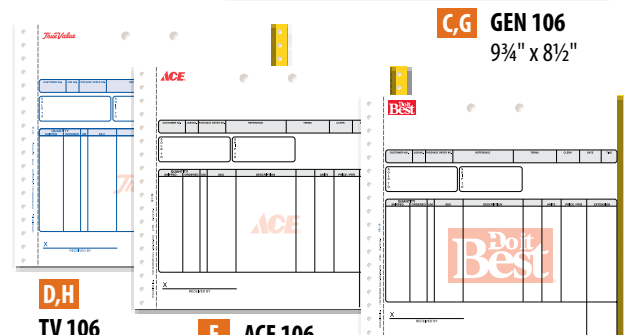
## EPICOR CONTINUOUS ALTERNATE CONTRACTOR INVOICES

Our 3 part and 4 part Epicor Continuous Alternate Contractor Invoices are available as a branded stock item with either an Ace, Do it Best or True Value logo or as a non-branded stock item. They can also be personalized with your individual store's logo, name, address, etc. in blue or black inks. Contact a Centurion Service Representative for more information.

Item	No. of Parts	Stock/ Personalized*	Price Per Carton					
			1	4	6	8	10	
C	GEN 106-3	3	Stock	84.13	78.61	73.77	71.03	68.52
	GEN 106-3P	3	Personalized*	127.91	102.94	96.96	92.69	91.19
D	TV 106-3	3	Stock	84.13	78.61	73.77	71.03	68.52
	TV 106-3P	3	Personalized*	127.91	102.94	96.96	92.69	91.19
E	ACE 106-3	3	Stock	84.13	78.61	73.77	71.03	68.52
	ACE 106-3P	3	Personalized*	127.91	102.94	96.96	92.69	91.19
F	DIB 106-3	3	Stock	84.13	78.61	73.77	71.03	68.52
	DIB 106-3P	3	Personalized*	127.91	102.94	96.96	92.69	91.19
G	GEN 106-4	4	Stock	111.87	104.54	98.11	94.47	91.10
	GEN 106-4P	4	Personalized*	156.67	134.45	125.14	121.75	119.03
H	TV 106-4	4	Stock	111.87	104.54	98.11	94.47	91.10
	TV 106-4P	4	Personalized*	156.67	134.45	125.14	121.75	119.03

PAPER COLOR SEQUENCE  
WHITE/CANARY/PINK/GOLDENROD

Minimum stock order – 1 carton 1,000 forms  
\*Minimum personalized order – 2 cartons 2,000 forms



**C,G GEN 106**  
9 3/4" x 8 1/2"

**D,H TV 106**  
9 3/4" x 8 1/2"

**E ACE 106**  
9 3/4" x 8 1/2"

**F DIB 106**  
9 3/4" x 8 1/2"

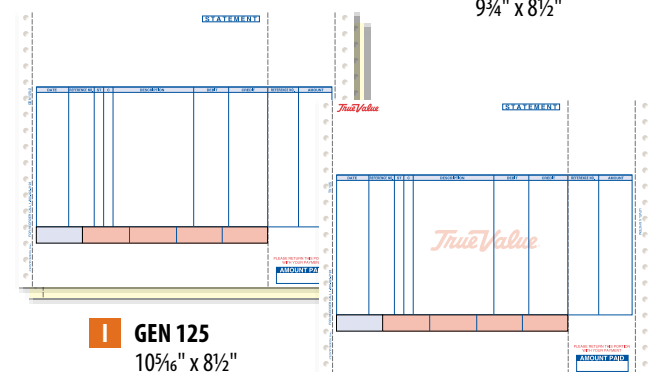
## EPICOR CONTINUOUS STATEMENTS

Our 2 part Epicor Continuous Statements are available as a branded stock item with either an Ace or True Value logo. A full vertical perforation on ply 1 allows your customer to return the stub portion of the statement with payment. Statements conveniently fold in half into our STM EN envelopes. They can also be personalized with your individual store's logo, name, address, etc. in blue or black inks. Contact a Centurion Service Representative for more information.

Item	No. of Parts	Stock/ Personalized*	Price Per Carton					
			1	4	6	8	10	
I	GEN 125-2	2	Stock	64.98	56.73	54.96	52.94	51.17
	GEN 125-2P	2	Personalized*	119.43	78.56	75.27	71.27	69.94
J	TV 125-2	2	Stock	64.98	56.73	54.96	52.94	51.17
	TV 125-2P	2	Personalized*	119.43	78.56	75.27	71.27	69.94
K	9005844	2	Stock	64.98	56.73	54.96	52.94	51.17
	9005844P	2	Personalized*	119.43	78.56	75.27	71.27	69.94

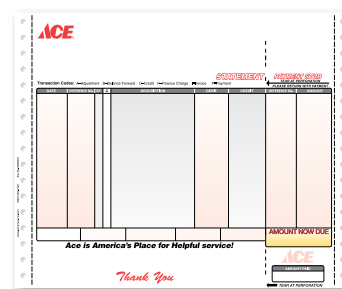
PAPER COLOR SEQUENCE  
WHITE/CANARY

Minimum stock order – 1 carton 1,000 forms  
\*Minimum personalized order – 2 cartons 2,000 forms



**I GEN 125**  
10 5/16" x 8 1/2"

**J TV 125**  
10 5/16" x 8 1/2"



**K 9005844**  
10 5/16" x 8 1/2"

Contact a Centurion Service Representative for more information or for personalization/custom printing pricing.



# GENERAL STORE OPERATIONS

## EPICOR CONTINUOUS STATEMENT ENVELOPES

Our Epicor Continuous Statement Envelopes are just the right fit for our Epicor Continuous Statements (simply fold in half). Available with dry gum adhesive or self seal adhesive, which helps reduce the time you spend stuffing and sealing. Personalization available in 1 or 2 colors. Choose from red, blue or black ink only.

Item	No. of Colors	Sealing Option	Price Per 1,000			
			1,000	2,500	5,000	10,000
L STM ENP1	1	Dry Gum	68.78	64.89	62.90	57.33
	2	Dry Gum	74.13	69.93	67.20	61.74
M STM ENSSP1	1	Self Seal	102.06	96.28	92.81	85.05
	2	Self Seal	104.58	98.70	95.02	87.15

Please Note: Self seal envelopes have a shelf life of approximately 12 months.



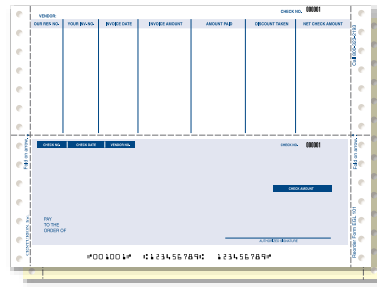
### L-M STM EN

Overall Size	4 1/2" x 9 1/4"
Window Size	1 1/8" x 3 3/4"
Window Position	3/16" Left, 2 1/8" Bottom
Stock	24# White Wove
Envelopes Per Box	500
Quantity Per Carton	2,500

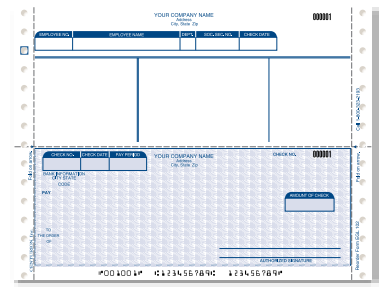
## EPICOR CONTINUOUS CHECKS

Our 2 part Epicor Continuous Accounts Payable Check and our 1 part Epicor Continuous Payroll Check are printed with a light blue background. Both checks are designed to fit our #10 window envelope. Personalization available in black ink.

Item	Description	No. of Parts	Price Per Lot	Price Per 1,000		
				500	1,000	2,000
N EGL 101P	Accounts Payable	2	106.99	138.19	129.80	112.53
O EGL 102P	Payroll	1	105.11	135.27	122.43	106.12



N EGL 101  
9 1/2" x 7"

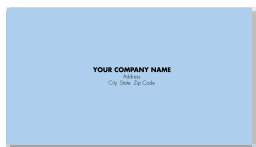


O EGL 102  
9 1/2" x 7"

## REMITTANCE ENVELOPES

Pre-addressed back to you, our Remittance Envelopes are ideal to insert with your statement for a quick payment turnaround. Choose our white envelope or the blue envelope if you want your payment to stand out in the mail. For no extra charge, add your locations postal barcode for an even quicker return. Personalization available in blue or black ink.

Item	No. of Colors	Sealing Option	Price Per 1,000			
			1,000	2,500	5,000	10,000
P REMIT B	1	Dry Gum	63.27	58.20	49.77	46.56
Q REMIT W	1	Dry Gum	55.92	52.76	45.29	44.16



### P REMIT B

Overall Size	3 5/8" x 6 1/2"
Paper Stock	24# Blue or White Wove
Quantity Per Box	500 Envelopes
Quantity Per Carton	2,500 Envelopes



### Q REMIT W

## NON-PERSONALIZED SMALL PARTS ENVELOPE

Our 3-1/2" X 6-1/2" Non-Personalized Small Parts Envelope is the solution to packing and pricing the smallest of items. Ideal for keys, screws, bolts, chains, and more.

Item	Sealing Options	Qty./ Box	Price Per Box	
			1	2
S SPE	Dry Gum	500	28.60	23.82

Contact a Centurion Service Representative for more information or for personalization/custom printing pricing.

Prices are subject to change without notice.

## MISCELLANEOUS ENVELOPES

Our Miscellaneous Envelopes are the solution to packing and pricing the smallest of items. Ideal for keys, screws, blots, chain, wire, and more. Stocked with and without the Ace logo. 500 3-1/4" X 5-1/2" envelopes per carton. Custom printed copy available in black ink. Contact a Centurion Service Representative for more information on personalization. This item is also available in the Ace warehouse.

Item	Stock/ Personalized	Sealing Options	Qty./ Box	Price Per Box		
				1	2	5
R 90102	Stock	Dry Gum	500	23.36	19.45	-
R 90102P	Personalized	Dry Gum	500	-	41.10	26.75



R 90102  
3 1/8" x 5 1/2"



S SPE - 3 1/2" x 6 1/2"





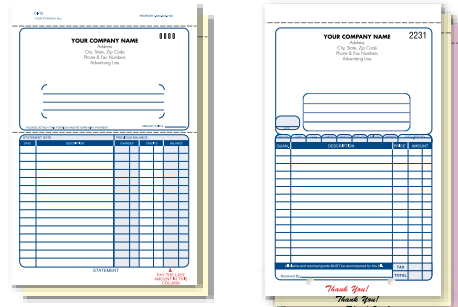
## MULTI-PURPOSE FORMS

Our Multi-Purpose Invoices, Special Order Form and our Manual Statements are all carbonless 2, 3 and 4 part forms. These forms can be used as sales slips, charge slips, rain checks or promotional order forms. Personalization and numbering available in black or blue ink.

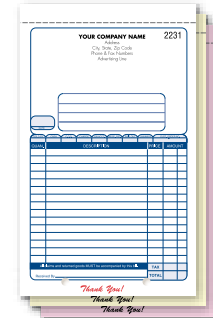
	Item	Description	No. of Parts	Price Per Carton of 1,000		
				1,000	2,000	5,000
A	CI 12	Statement Form	2	55.84	53.54	52.11
	CI 12P	Personalized Statement Form	2	101.05	87.34	73.20
B	CI 4	Multi-Purpose Invoice	3	69.58	59.37	56.38
	CI 4P	Personalized Multi-Purpose Invoice	3	113.02	100.98	85.36

	Item	Description	No. of Parts	Price Per Package of 250			
				2	4	10	20
C	CI 6	Multi-Purpose Form	4	34.06	27.40	26.64	25.92
	CI 6P*	Personalized Multi-Purpose Form	4	51.24	36.72	32.31	31.32

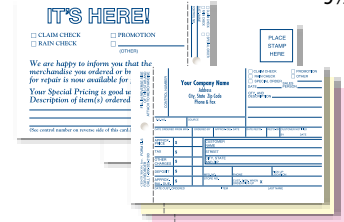
\*Min imprint order is 500



**A** CI 12/ CI 12P  
5 3/8" x 8 3/4"



**B** CI 4/CI 4P  
5 3/8" x 9 1/4"



**C** CI 6/ CI 6P  
6" x 4 1/4"

PAPER COLOR SEQUENCE  
WHITE/CANARY/PINK/GOLDENROD

## REGISTER FORMS

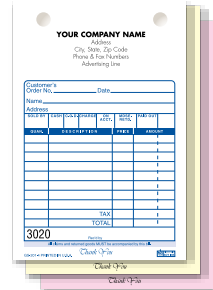
Our Multi-Purpose Register Forms are available in 2, 3 or 4 parts. Two-hole punched and fan-folded for use in register machines. Personalization and numbering available in black or blue ink.

	Item	Description	No. of Parts	Price Per 1,000			
				5,000	10,000	15,000	20,000
D	2NCR46	Multi-Purpose Register Form	2	58.93	41.60	35.99	33.21
	2NCR46S	Multi-Purpose Register Form	2	61.48	43.98	38.33	35.50
E	3NCR46	Multi-Purpose Register Form	3	69.01	50.94	45.19	42.31
	3NCR46S	Multi-Purpose Register Form	3	71.98	53.81	48.02	45.15
F	2NCR58	Multi-Purpose Register Form	2	78.16	56.53	53.89	51.59
	3NCR58	Multi-Purpose Register Form	3	99.84	76.12	74.14	71.68
	4NCR58	Multi-Purpose Register Form	4	111.85	96.67	94.57	89.87

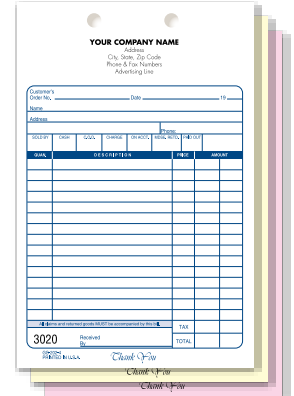
Min order is 5000

	Item	Description/Size	No. of Parts	Price Per 1,000			
				250	500	1,000	2,000
G	GS 201-3	General Sales Register Form	3	228.72	147.72	105.20	84.88
	GS 202-2	General Sales Register Form	2	231.28	151.10	108.91	88.54
	GS 202-3	General Sales Register Form	3	261.60	181.08	138.56	117.31

Price is per 1000 but orders of 250 or 500 can be placed



**D-G** REGISTER FORMS  
4 - 4 5/16" x 6"



**D-G** REGISTER FORMS  
5 1/2" x 8 1/2"

## SALES FORMS

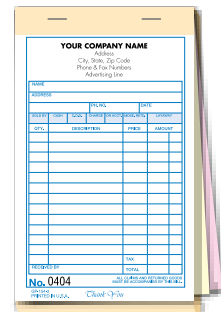
Our Personalized Sales Books are available in 2 or 3 parts with a sturdy manila wrap-around cover that folds each set of forms to prevent write-through. Personalization and numbering available in black or blue ink.

	Item	Description	No. of Parts	Price Per 50 Books			
				10	15	25	50
H	GP 154-2	Sales Book	2	8.34	7.25	6.24	5.60
	GP 154-3	Sales Book	3	9.69	8.24	7.45	6.67

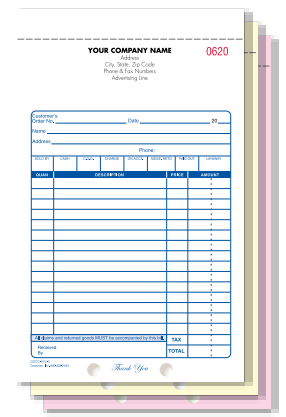
	Item	Description	No. of Parts	Price Per 1,000			
				250	500	1,000	2,000
I	GSCC 652-2	General Sales Forms	2	240.04	163.83	130.42	113.57
	GSCC 652-3	General Sales Forms	3	278.64	201.22	167.00	148.45

Price is per 1000 but orders of 250 or 500 can be placed

	Item	Description	No. of Parts	Price Per Carton of 1,000		
				1	3	5
J	IDP47C	NCR General Sales Form	3	50.58	-	-
	IDP47CP	NCR General Sales Form (Printed)	3	98.07	79.16	73.27



**H** GP 154  
4 1/4" x 7"



**I** GSCC 652  
5 3/8" x 8 1/2"

Contact a Centurion Service Representative for more information or for personalization/custom printing pricing.



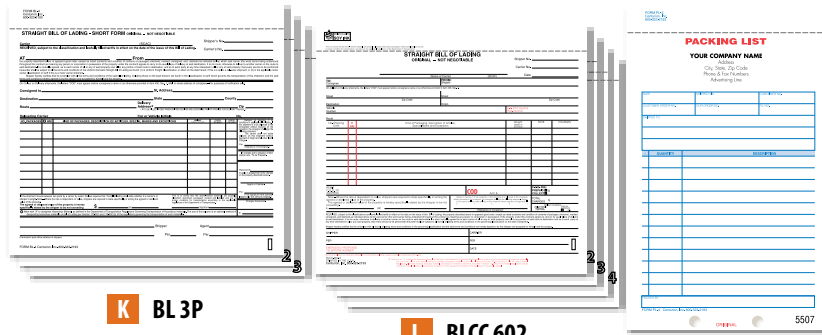
# GENERAL STORE OPERATIONS

## BILL OF LADING

Our 3 or 4 part Bill of Lading has all the necessary space to record every mode of transportation. Personalization available in black or blue ink.

Item	Description	No. of Parts	Price Per Package of 250			
			1	2	4	10
<b>K</b> BL 3P	Bill of Lading	3	108.73	86.87	65.59	51.43

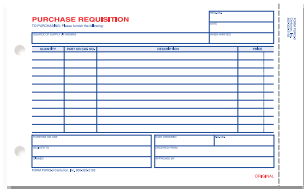
Item	Description	No. of Parts	Price Per 1,000			
			250	500	1,000	2,000
<b>L</b> BLCC602-3	3 Part Bill of Lading W/COD	3	307.00	228.70	195.54	178.55
<b>L</b> BLCC602-4	4 Part Bill of Lading W/COD	4	352.80	276.32	241.71	221.02



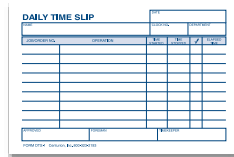
**K** BL 3P

**L** BLCC 602

**M** PL 3P



**N** PURQ 3P



**O** DTS-1

## MISCELLANEOUS FORMS

Our Miscellaneous Forms can be used for a variety of functions. From our 2 Part Gift Certificates that can increase sales, to our Daily Time Slip that will help you keep a record of time spent on each job.

Item	Description	Price Per Package of 250			
		1	2	4	10
<b>M</b> PL 3P	3 Part Packing List	121.21	82.37	62.80	48.88
<b>N</b> PURQ 3P	3 Part Purchase Requisition	101.44	70.45	52.10	44.69

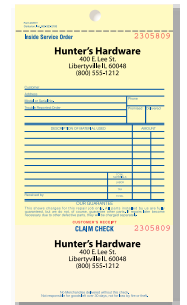
Item	Description	Price Per Package of 500			
		1	2	4	10
<b>O</b> DTS-1	Daily Time Slip	24.20	19.14	16.04	14.07

Item	Description	Price Per Package of 250		
		1	2	4
<b>P</b> GC GENP	Personalized Gift Certificates	89.93	55.92	41.03

Item	Description	Price Per Carton of 1000		
		1,000	2,000	5,000
<b>Q</b> CR1TP	2 Part Inside Service Order	123.94	105.94	94.65



**P** GC GENP



**Q** CR1TP

## STATIONERY

### STATIONERY

Our Letterheads are printed in 1 or 2 colors on 8 1/2" x 11" 24# laser bond with compatible inks for problem free performance. Choose from red, black or reflex blue inks.

Item	No. of Colors	Qty./Box	Price Per Box	
			1	2
<b>A</b> LTRHD-1P	1	500	80.00	52.95
<b>A</b> LTRHD-2P	2	500	156.75	86.96

Our #10 Regular Envelopes are printed in 1 or 2 colors and are laser compatible for problem free performance. Choose from red, black or reflex blue inks.

Item	No. of Colors	Qty./Box	Description	Price Per 1,000		
				1,000	2,000	5,000
<b>B</b> 10 REGP1	1	1,000	# 10 Regular	55.48	50.50	46.76
<b>B</b> 10 REGP2	2	1,000	# 10 Regular	64.62	59.73	53.31

Our Business Cards are printed in 1 or 2 colors on white 80# vellum finish card stock. Choose from red, black or reflex blue inks.

Item	No. of Colors	Price Per Lot	
		500	1,000
<b>C</b> BCR 1	1	38.50	50.60
<b>C</b> BCR 2	2	42.50	65.50



**A** LTRHD 8 1/2" x 11"

**C** BCR 2 3 1/2" x 2"

**B** 10 REG 4 1/8" x 9 1/2"



Contact a Centurion Service Representative for more information or for personalization/custom printing pricing.

Prices are subject to change without notice.

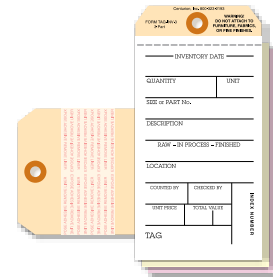


## INVENTORY TAGS

### INVENTORY TAGS

Our 2 or 3 part Inventory Tags are extremely versatile and can be used in many applications. These tags are 3-1/8" x 6-1/4". Blank inventory tags come 1,000 per box.

Item	Stock/ Personalized	No. of Parts	Price Per Carton of 1,000				
			1	2	3	4	5
A TAG INV-2	Stock	2	131.38	124.64	118.56	113.05	105.67
TAG INV-2P	Personalized	2	149.11	144.92	140.29	133.69	126.29
TAG INV-3	Stock	3	171.03	162.26	158.20	150.67	137.57
TAG INV-3P	Personalized	3	201.00	189.96	181.80	173.87	157.76



**A TAG INV**

## PRINTER SUPPLIES

### LASER AND RECEIPT PRINTER TONER CARTRIDGES

Our OEM Laser and Receipt Printer Toner Cartridges are compatible with the Epson TM-J7100 printer. The ink cartridges come in Black and Red.

Item	Printer Model	Toner Color	Price Per Each
A C33S020403	Epson Model TM-J7100/9100	Black	18.50
B C33S020405	Epson Model TM-J7100/9100	Red	16.00

Our OEM Laser and Receipt Printer Toner Cartridge is compatible with the OKI Data Laser Model B6200/B6250/B6300.

Item	Printer Model	Toner Color	Price Per Each
C 52114501	Okidata Laser Model B6200/B6250/B6300	Black	249.87



**A C33S020403**



**B C33S020405**



**C 52114501**

### PRINTER RIBBONS

Our Printer Ribbons come in many different OEM and non-OEM styles. Contact a Centurion Service Representative if you need a specific color ribbon or a printer ribbon that is not listed here.

Item	Ribbon Color	Ribbon/Package	Printer Manufacturer	Price Per Package		
				1	2	3
D C1319	Black	6	Okidata	20.10	-	-
E OKI 192	Black	6	Okidata	24.25	23.75	23.58
F OKI 393	Black	2	Okidata	23.88	22.17	20.47
G C1255	Black	4	Okidata	48.00	46.00	44.00
H C1273	Purple	6	Epson	21.50	21.00	20.50
I C1281	Purple	6	Star Micronics	26.00	24.00	22.00
J TSC 3P	Black	6	Texas Instruments	18.95	17.95	16.95



**D C1319**



**E OKI 192**



**F OKI 393**



**G C1255**



**H C1273**



**I C1281**



**J TSC 3P**

## LAMINATING PRODUCTS

### LAMINATORS AND SUPPLIES

The Fellowes® Cosmic 2122; CL-125 Laminator is a versatile, user-friendly laminator for wide format applications in the home or small office. Accommodates documents up to 12-1/2" wide and features advanced temperature control for consistent lamination.

Item	Printer Model	Qty./Package	Price Per Each
A CL-125	Fellowes Laminator	1	94.47
B 5200501	8½" x 11" Letter Size Pouches	25	9.75
C 52006	8½" x 14" Legal Size Pouches	25	15.00

Laminators sold separately



**A CL-125**



**B 5200501**



**C 52006**

Contact a Centurion Service Representative for more information or for personalization/custom printing pricing. ☎



# LOSS PREVENTION

## SHOPLIFTING SIGNS

Our Shoplifting Signs will help stop shoplifters in their tracks. Both "Free Ride In a Police Car" and "Smile you're on Camera!" signs offer serious warnings in lighthearted language. Both help deter would-be-shoplifters from stealing your valuable merchandise.

Item	Description	Price Per Each		
		1	10	30
A	SIGN RIDE "Free Ride in a Police Car" Sign	4.00	3.00	2.00
B	SIGN SMILE "Smile you're on Camera!" Sign	4.00	3.00	2.00



A SIGN RIDE



B SIGN SMILE

## INDOOR SECURITY & SAFETY MIRRORS

Our 18" and 26" Convex Security Mirror are widely used to help keep indoor spaces safe and secure. These circular mirrors have a molded back and are perfect for many applications and permits a 160 degree wide-field viewing area. Their unique shape and construction permits quick installation on either the wall or ceiling. Simple mounting, cleaning, and maintenance. With proper installation and care, these mirrors will last indefinitely. Each mirror includes trim around lens edge, and mounting hardware.

Item	Description	Price Per Each
C	H112181MB 18" Convex Mirror	62.70
	H112261MB 26" Convex Mirror	86.25



C H112181MB/H112161MB



## COUNTERFEIT DETECTOR PENS

Highly effective & inexpensive tool for detecting bad bills. Simply make a small mark on U.S. currency. Chemically sensitive ink works instantly. An amber mark passes the test, while a dark brown or black mark means the bill is probably counterfeit. Works on all new design U.S. currency (bills series 1959 & later).

Item	Description	Qty./ Package	Price Per Package
D	3513B-1 US Currency Counterfeit Detector Pens	3	7.50
E	351R-1 US Currency Counterfeit Detector Pen	1	2.50



D 3513B-1



E 351R-1



## FORMS

### RENTAL LASER CONTRACTS

Our Total Rental Laser Contract Forms are compatible with the Total Rental software system. Individual forms are pre-collated with alternating white and yellow sheets. Terms and conditions of rental are printed on the back of the form. Available as a branded stock item with either an Ace, Do it Best, Grand Rental Station or True Value logo or as a non-branded stock item. They can also be personalized with your individual store's logo, name, address, etc. in blue or black inks. Contact a Centurion Service Representative for more information.

Item	Description	Logo	Price Per Carton				
			1	3	6	12	
A	ML GEN	Total Rental Contract	Non-branded	62.74	60.05	57.35	56.06
	ML TVR	Total Rental Contract	True Value	62.74	60.05	57.35	56.06
	ML ACE	Total Rental Contract	Ace	62.74	60.05	57.35	56.06
	ML DIB	Total Rental Contract	Do It Best	62.74	60.05	57.35	56.06
	ML GRS	Total Rental Contract	Grand Rental Station	62.74	60.05	57.35	56.06

Our 8½" x 11" Xpress Rental Laser Contracts are designed for the JK Data Software System.

Item	Description	Logo	Price Per Carton	
B	JK GEN 2L	2 Part Laser Contract	Non-branded	65.88

1,000 forms per carton

### CONTINUOUS RENTAL CONTRACTS

Our Continuous rental contracts, in stock, comes in 2 parts and are compatible with the Market Line Software System. Available as a branded stock item with either a Taylor Rental or True Value logo or as a non-branded stock item. They can also be personalized with your individual store's logo, name, address, etc. in blue or black inks. Contact a Centurion Service Representative for more information.

Item	Description	Price Per Carton				
		1	3	6	12	
C	GF 1011SM	Solutions By Computer Cont. Rental Contract	64.39	61.63	59.09	57.53
D	RF TVR-SM	TV Topic II Continuous Rental Contact	64.39	61.63	59.09	57.53
E	580423	TRC-Topic II Continuous Rental Contact	64.39	61.63	59.09	57.53

1,000 forms per carton

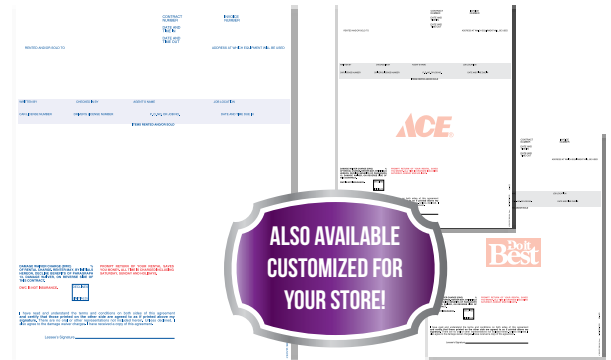
### MANUAL RENTAL CONTRACTS & FOLDERS

Our 3 part Manual Rental Contract forms are ideal if you don't have a software solution for your rental department or as a back up. Rental Agreement Terms and Conditions on the back of the form. Available as a branded stock item with either a Do it Best or True Value logo or as a non-branded stock item. They can also be personalized with your individual store's logo, name, address, etc. in blue or black inks. Contact a Centurion Service Representative for more information.

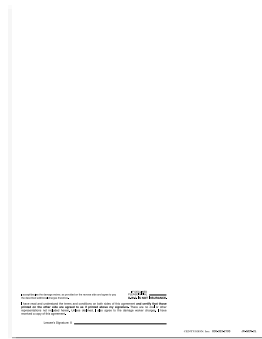
Item	Description	Qty./Package	Price Per Package				
			1	4	8	12	
F	GF 1011	Non-branded Manual Rental Agreement	250	28.79	26.85	25.82	25.08
	GF 1011P	Personalized Manual Rental Agreement	250	-	57.71	48.34	45.25
G	RF TVR	TVR Manual Rental Contract	250	28.79	26.85	25.82	25.08
	RF TVRP	Personalized TVR Manual Rental Contract	250	-	57.71	48.34	45.25
H	OR 1012	Orgill Manual Rental Contract	250	41.75	40.38	36.02	33.55
	OR 1012P	Personalized Orgill Man. Rental Contract	250	-	56.83	50.93	45.97
I	990324	DIB Manual Rental Contract	100	12.23	-	-	-
J	RENT CONT	Non-branded Manual Rental Contract	500	60.58	43.34	41.82	40.53
	RENT CONTP	Personalized Manual Rental Contract	500	119.51	78.29	62.57	59.07

Keep all of the information on your rental equipment in one place. Item, rates, deposit, related rental and merchandise sale items and more. Our Rental Summary Folder is designed to help you keep track of it all. Constructed from durable heavy weight stock.

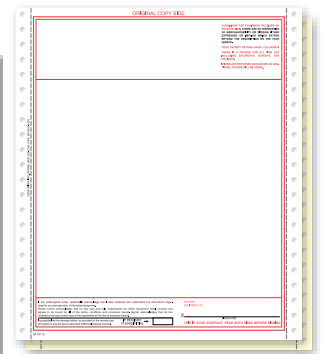
Item	Description	Qty./Package	Price Per Package					
			1	4	6	8	10	
K	GF 1020	Rental Equipment Folders	25	37.55	33.19	28.41	23.11	17.34



A ML GEN



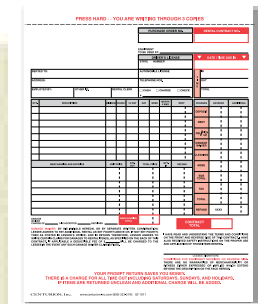
B JK GEN 2L



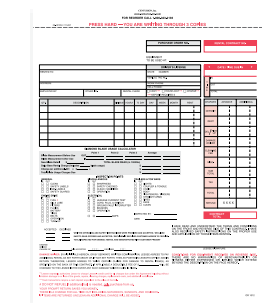
C GF 1011SM



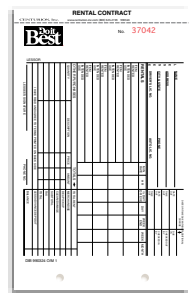
E 580423



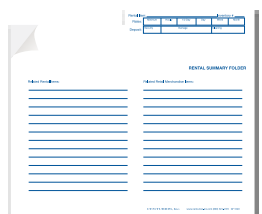
F GF 1011/  
GF 1011P  
8½" x 10¾"



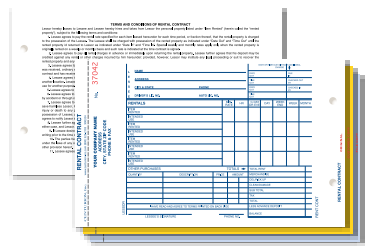
H OR 1012/  
OR 1012P  
8½" x 10¾"



I 990324  
9⅞" x 5⅓"



K GF 1020 - 11¼" x 18¼"



J RENT CONT  
9½" x 5⅓"

Contact a Centurion Service Representative for more information or for personalization/custom printing pricing.



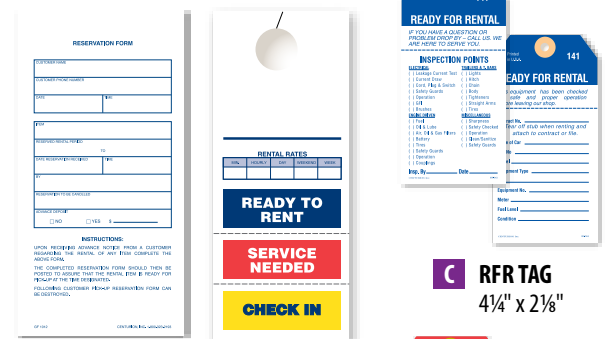
# RENTAL SUPPLIES

## READY TO RENT TAGS & DECALS

### RENTAL FORMS & TAGS

Our Supporting Rental Forms and Tags will assist in advertising, reservations and keeping equipment up to date and ready for renting over and over.

Item	Description	Qty./Package	Price Per Package		
			1	2	4
A	GF 1012 Reservation Form	250	17.25	16.50	15.50
B	GEN 1010 "Rent Me" Hang Tag	250	29.18	27.81	26.97
C	RFR TAG Ready for Rent Tag	500	16.52	14.01	12.81
D	SR TAG Service Required Tag	500	16.52	14.01	12.81
E	TAG 150 Ready for Rent/ Service Required Combo Tag	500	41.74	35.68	—
F	PT 1 5" Plastic Security Loops	500	5.05	3.58	—



**A** GF 1012  
4 3/4" x 9 1/4"

**B** GEN 1010  
4" x 9 3/4"

**C** RFR TAG  
4 1/4" x 2 1/8"

### RENTAL EQUIPMENT WEATHERPROOF LABELS

Our 2" x 3" Polyester Rental Equipment Weatherproof Labels are designed to withstand the harshest environments and rugged applications and are designed to last for 3-4 years.

Item	Description	Qty./Package	Price Per Package		
			1	2	4
G	RM23 Rent Me	25	10.00	9.50	9.00
H	RCL23 Please Return Clean	25	10.00	9.50	9.00
I	RCL25 Return Clean \$25.00	25	10.00	9.50	9.00
J	RCL50 Return Clean \$50.00	25	10.00	9.50	9.00
K	DSL23 Equipment Uses Diesel	25	10.00	9.50	9.00
L	GAS23 Equipment Uses Gasoline	25	10.00	9.50	9.00
M	MIX23 Equipment Uses 2-Cycle	25	10.00	9.50	9.00



**E** TAG 150  
3 1/8" x 6 1/4"



**D** SR TAG  
4 1/4" x 2 1/8"



**F** PT 1

### RENTAL EQUIPMENT WEATHERPROOF LABELS

Our 3" x 5" Yellow and Black Vinyl label clearly alerts all users to CALL 811 before you dig. This is a national "hotline" for homeowners and professionals to have the local utility company mark underground utilities lines to avoid service disruption, potential fines and or repair costs.

Item	Description	Qty./Package	Price Per Package
N	5013100 Call 811 Labels	25	9.67



**G** RM23 - 2" x 3"



**H** RCL23 - 2" x 3"



**I** RCL25 - 2" x 3"



**J** RCL50 - 2" x 3"



**N** 5013100 - 3" x 5"



**K** DSL23 - 2" x 3"



**L** GAS23 - 2" x 3"



**M** MIX23 - 2" x 3"

Contact a Centurion Service Representative for more information or for personalization/custom printing pricing.

Prices are subject to change without notice.



ITEM CODE	PG	ITEM CODE	PG	ITEM CODE	PG	ITEM CODE	PG	ITEM CODE	PG	ITEM CODE	PG	ITEM CODE	PG	ITEM CODE	PG
00963	18	7060620	4	1115DIB	13	9006008R	11	CP2228 BLK	5	GAS23	28	LTRHD-2P	24	STM ENSSP1	22
1163	14	7060621	4	1115DIC	13	90102P	22	CR1TP	24	GC GENP	24	LW 1	15	STM ENSSP2	22
1176	14	7061300	8	1115IR	13	9021767L	11	CS	7	GEN 1010	28	MIX23	28	STR 302-3	17
1177	14	7061390	8	1115RINK	13	9069071R	10	CS 2	15	GEN 1012	28	ML ACE	27	T8001 P1	19
1178	14	7061500	8	1115RSINK	13	9108838BL	12	CS 2BM	15	GEN 103-2	20	ML DIB	27	T8001 P2	19
1179	14	7061590	8	1115WINK	13	9108838GN	12	CS 2DIB	15	GEN 103-2P	20	ML GEN	27	T8001 SSP1	19
1180	14	7061600	8	1131-01	13	9108838R	12	CS 2P1	16	GEN 103-3	20	ML GRS	27	T8001 SSP2	19
1183	14	7061690	8	1131RINK	13	9108838W	12	CS 2P2	16	GEN 103-3P	20	ML TVR	27	TAG 150	28
1186	14	7061700	8	1131RSINK	13	9108838Y	12	CS 2P3	16	GEN 103-4	20	NM-1SET	5	TAG INV-2	25
1220	5	7061790	8	1131WAINK	13	9118415GN	10	CS 2TV	15	GEN 103-4P	20	NM-2SET	5	TAG INV-2P	25
20410	7	7062300	8	1131WINK	13	9118415LB	10	CS 3	15	GEN 105-3	21	NU024I	18	TAG INV-3	25
27095	7	7062390	8	1136-01	13	9118415R	10	CS 4	15	GEN 105-3P	21	NU250I	18	TAG INV-3P	25
30332	9	7062500	8	1136DIB	13	9118415Y	10	CS 4BM	15	GEN 105-4	21	NU300I	18	TSC 108	12
30859	15	7062590	8	1136DIC	13	9161548GEN	19	CS 4DIB	15	GEN 105-4P	21	OKI 192	25	TSC 208	12
30909	9	7062600	8	1136IR	13	9161548SS	19	CS 4P1	16	GEN 106-3	21	OKI 393	25	TSC 3P	25
52006	25	7062690	8	1136RINK	13	9161548SSG	19	CS 4P2	16	GEN 106-3P	21	OR 1012	27	TSY 208	12
90102	22	7062700	8	1136RSINK	13	9161548SST	19	CS 4P3	16	GEN 106-4	21	OR 1012P	27	TV 103-2	20
397064	17	7062790	8	1136WAINK	13	9161548TV	19	CS 4TV	15	GEN 106-4P	21	PL 3P	24	TV 103-2P	20
580423	27	7063790	8	1136WINK	13	ACE 103-2	20	CS CL-1	9	GEN 110	18	PT 1	28	TV 103-3	20
727933	10	7064300	8	134P	7	ACE 103-2P	20	CS GEN-3	9	GEN 125-2	21	PURQ 3	24	TV 103-3P	20
990324	27	7064390	8	2NCR46	23	ACE 103-3	20	CS GEN-3R	9	GEN 125-2P	21	RCL23	28	TV 103-4	20
1191999	9	7064500	8	2NCR465	23	ACE 103-3P	20	CS GENBL-3	9	GEN 125-L	19	RCL25	28	TV 103-4P	20
1752264	15	7064590	8	2NCR58	23	ACE 106-3	21	CS GENG-3R	9	GEN 125-LP	19	RCL50	28	TV 103-L	19
1752265	15	7064600	8	30859 BM	15	ACE 106-3P	21	CS GENGR-3	9	GEN 125-P	19	REMIT B	22	TV 106-3	21
4007100	18	7064690	8	30859 P1	16	AF 2X3	6	CS GENR-3	9	GEN 800	18	REMIT W	22	TV 106-3P	21
4007200	18	7064700	8	30859 P2	16	AF 3X5	6	CS LBL-1	11	GEN 801	18	RENT CONT	27	TV 106-4	21
5013100	28	7064790	8	30859 P3	16	AF 4X6	6	CS LBL-2	12	GEN 802	18	RENT CONTP	27	TV 106-4P	21
5200501	25	7069101	3	30909 DIB	9	AF 3X12	6	CS TV-1	9	GEN 900	18	RF TVR	27	TV 125-2	21
7011000	5	7069102	3	30909 ORG	9	BCR1	24	CTV 103-3	20	GEN 901	18	RF TVR-SM	27	TV 125-2P	21
7060110	3	9005794	20	30909 TV	9	BCR2	24	CTV 103-3P	20	GEN 902	18	RF TVRP	27	TV 125-L	19
7060330	3	9005844	21	30909 TVN	9	BL 3P	24	DB 110	18	GEN 99	18	RFR TAG	28	TV 125-LP	19
7060441	3	9006008	11	3513B-1	26	BLCC602-3	24	DB 99	18	GF 1011	27	RM23	28	UN DIB-4P	11
7060601	4	9021767	11	351R-1	26	BLCC602-4	24	DC 110	18	GF 1011P	27	RS 8001	19	UN G4P	11
7060602	4	9069071	10	3NCR46	23	C 1255	25	DC 99	18	GF 1011SM	27	RS 8001SS	19	UN G4PFR	11
7060603	4	9108838	12	3NCR465	23	C 1273	25	DIB 103-2	20	GF 1020	27	SEN351495	18	UN G4PR	11
7060604	4	9118415	10	3NCR58	23	C 1281	25	DIB 103-2P	20	GP 154-2	23	SIGN GEN1W	8	UN G4PXW	11
7060605	4	9118415LB	10	40030G	9	C 1319	25	DIB 103-3	20	GP 154-3	23	SIGN GEN2W	8	UN G4PY	11
7060606	4	9123290	10	40030R	9	C33S020403	25	DIB 103-3P	20	GS 201-3	23	SIGN GEN4W	8	UN G5P	12
7060607	4	9161548	19	40030Y	9	C33S020405	25	DIB 106-3	21	GS 202-2	23	SIGN RIDE	26	UN OR4P	11
7060608	4	95175-001	15	4NCR58	23	CALENDARHL	7	DIB 106-3P	21	GS 202-3	23	SIGN SMILE	26	WA100	7
7060609	4	10010028	10	7181013P	14	CI 12	23	DIGHD 2X3	6	GSCC 652-2	23	SL556XW	11	WHS 3X10	6
7060610	4	10016245	10	7181222P1	14	CI 12P	23	DIGHD 3X10	6	GSCC 652-3	23	SPE	22	WHS 3X5	6
7060611	4	52114501	25	7181222P2	14	CI 4	23	DIGHD 3X4	6	H112181MB	26	SR TAG	28	WHS 4X6	6
7060612	4	10 REGP1	24	7181315P	14	CI 4P	23	DIGHD 3X5	6	H112261MB	26	SS 3X10	6	WHS 4X8	6
7060613	4	10 REGP2	24	7181317P	14	CI 6	23	DIGHD 4X6	6	IDP47C	23	SS 3X5	6	Z DIB-3	10
7060614	4	10 WDOP1	20	9005794P	20	CI 6P	23	DIGHD 4X8	6	IDP47CP	23	SS 4X6	6	Z GEN-3	10
7060615	4	10 WDOP2	20	9005844P	21	CL-125	25	DSL23	28	JK GEN 2L	27	SS 4X8	6	Z GEN-5A	10
7060616	4	10 WDOSSP1	20	9006008BL	11	CP0624 AR	5	DTS-1	24	LGPC 9499	20	STB 301-2	17	Z TV-1	10
7060617	4	10 WDOSSP2	20	9006008C	11	CP0624 BSL	5	EGL 101-LP	20	LR LABELS	11	STC 305-2	17	Z TV-1A	10
7060618	4	1110WINK	13	9006008GN	11	CP0624 DR	5	EGL 101P	22	LT 1011S	17	STM ENP1	22	Z TV-3N	10
7060619	4	1115-06	13	9006008L	11	CP2210 BLK	5	EGL 102P	22	LTRHD-1P	24	STM ENP2	22	Z TV-3W	10

Point of Sale Forms & Supplies

sign solutions

Dymo®

Monarch® Zebra®

Store Promotional Items

Label Solutions

sign solutions

Business Stationary

sign solutions

Dymo®

Point of Sale Forms & Supplies

Store Promotional Items

sign solutions

Zebra® Label Solutions

Monarch®

Business Stationary

**CENTURION** STORE SUPPLIES

*Exactly What You Need...Right When You Need It.*

 A Stevens Group Company

188 Industrial Drive, Suite 428, Elmhurst, Illinois 60126

 phone (800) 323-2193

 fax (866) 449-8725

 email [SERVICE@CENTURION-INC.COM](mailto:SERVICE@CENTURION-INC.COM)

 [WWW.CENTURION-INC.COM](http://WWW.CENTURION-INC.COM)