



# **gembird®**

**USER MANUAL • HANDBUCH • HANDLEIDING • MANUEL  
DESCRIPTIF • РУКОВОДСТВО ПОЛЬЗОВАТЕЛЯ •  
КЕРІВНИЦТВО КОРИСТУВАЧА • INSTRUKCJA OBSŁUGI**

## **WNP-UA300P-01**



**HIGH POWER USB WIFI ADAPTER, 300 MBPS  
HIGHPOWER USB WIFI-ADAPTER, 300 MBPS  
KRACHTIGE USB WIFI ONTVANGER, 300MBPS  
HIGH POWER USB WIFI ADAPTER, 300 MBPS  
МОЩНЫЙ USB WIFI АДАПТЕР  
ПОТУЖНИЙ USB WIFI АДАПТЕР  
VYSOCE VÝKONNÝ USB WIFI ADAPTÉR, 300 MBS**

## Features

- High power USB WiFi adapter, 802.11b+g+n
- Speeds up to 300 Mbps: watch online movies and stream music with ease
- The high power receiver allows you to connect to networks that are normally out of range
- Keep your network safe with the WPA and WPA2 encryption
- Works with all laptops and PC's

## Specifications

- Chipset: RTL8192EU
- Interface: USB 2.0
- Frequency: 2.4 - 2.4835 GHz
- Supports IEEE 802.11b (up to 11 Mbps), 802.11g (up to 54 Mbps) and 802.11n (up to 300 Mbps) standards dynamically
- RF power: up to 18 dBm
- Supports security: WPS, 64/128 bit WEP, WPA/WPA2, PA-PSK/WPA2-PSK (TKIP/AES)
- Receiver sensitivity: 11M: -85dBm@8% PER; 54M: -68dBm@10% PER; 270M: -68dBm@10% PER

- Antenna type: one detachable SMA antenna and one internal PIFA antenna
- Operating temperature: 0°C - 40°C
- Power consumption: 5V DC, up to 0.5 A
- Net weight: 30 g
- Dimensions: 45 x 19 x 12 mm



## 1. INTRODUCTION

Thank you for purchasing WNP-UA300P-01 High power USB WiFi adapter!

There is a LED indicator blinking when data communication is active.

## 2. QUICK INSTALLATION GUIDE

This chapter is to assist you how to use the included CD-ROM which comprises the Driver and the Client Utility Interface.

### 2.1 Driver Installation

Please follow the following instructions to install your new wireless USB Adapter

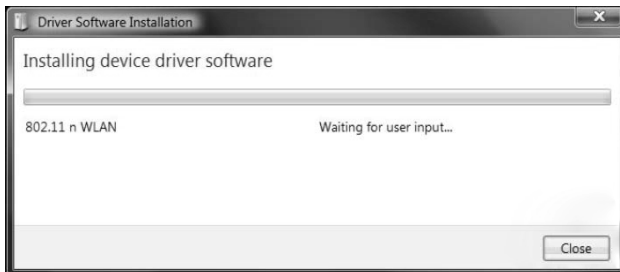
**2.1.1** Insert the USB wireless network card into an empty USB 2.0 port of your computer when computer is switched on. Never use force to insert the card, if you feel it's stuck, flip the card over and try again.

**2.1.2** The following message will appear on your computer, click 'Cancel / Close'.

## Under Windows XP

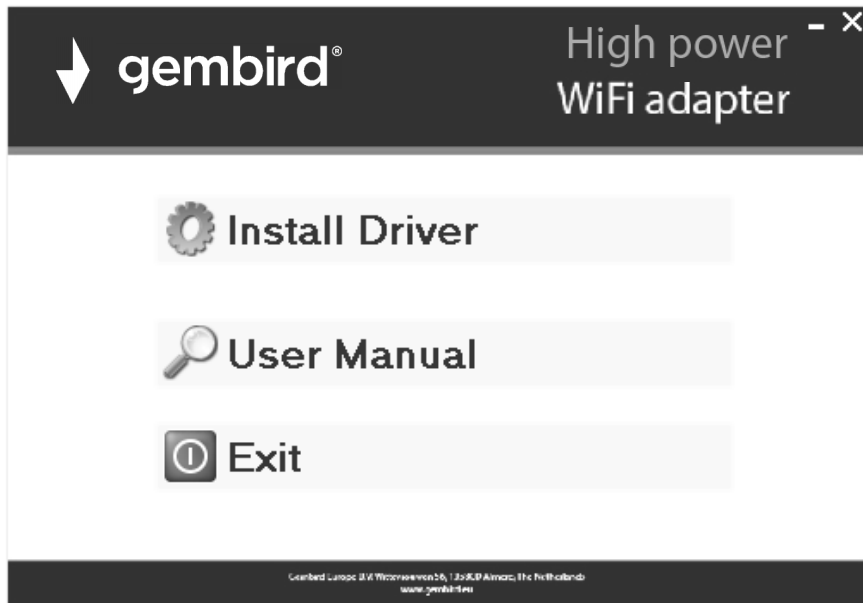


## Under Windows Vista and Windows 7



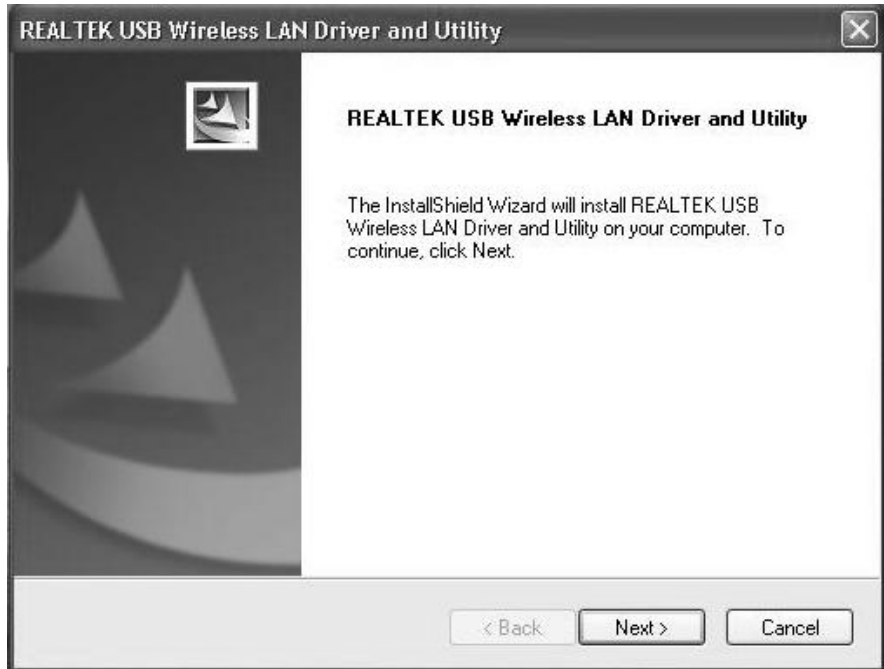
**2.1.3** Insert the driver CD into your CD-ROM or download from our website using QR code. You can see autorun screen below. If not, you can double click '[autorun.exe](#)' on CD.





Click '**Install Driver**' to start the installation procedure

**2.1.4** Installation descriptions shown. Click '**Next**' to continue



**2.1.5** Once the installation is finished the computer will be asked to reboot. you can click **Finish** and reboot the computer to finish the installation of driver files.





**2.1.6** A new icon will appear near the clock of system tray:



Left-click the icon will launch wireless network configuration utility, and you can right-click the icon to show the quick menu of configuration utility. This icon also uses different color to show the status of wireless connection:



Wireless connection is established, good signal reception.



Wireless connection is established, weak signal reception.



Connection is not established yet.



Wireless network card is not detected.

For detailed instructions of wireless network configuration utility, please see next chapter.

## 2.2 Connect to Wireless Access Point

To use wireless network, you have to connect to a wireless access point first. You can either use Client utility (comes with network card driver), or Windows Zero Config utility (comes with Windows operating system).

### 2.2.1 Using Client Utility

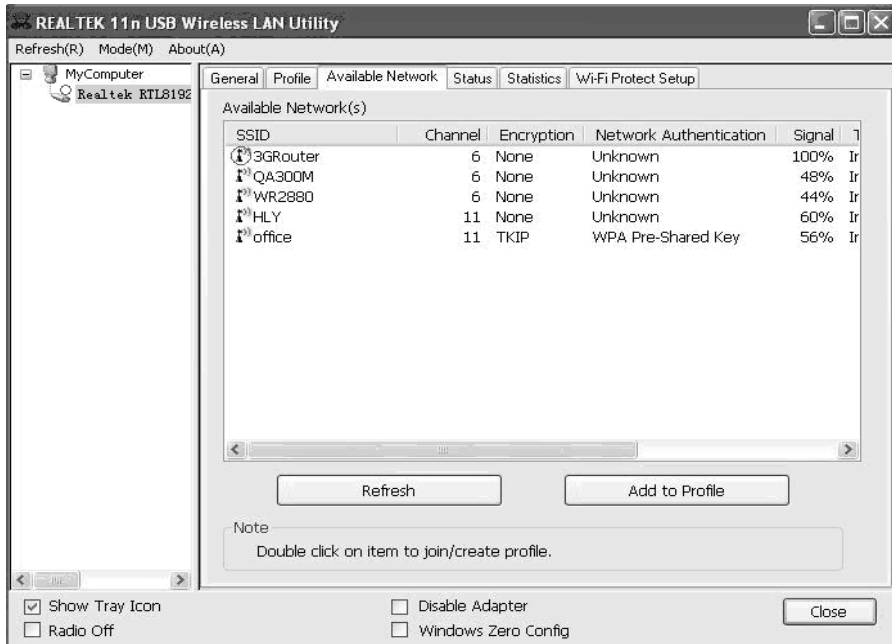
Please follow the following instructions to use Client configuration utility to connect to wireless access point.

1. Left-click the Client configuration utility icon located at lower-right corner of computer desktop, and configuration menu will appear:

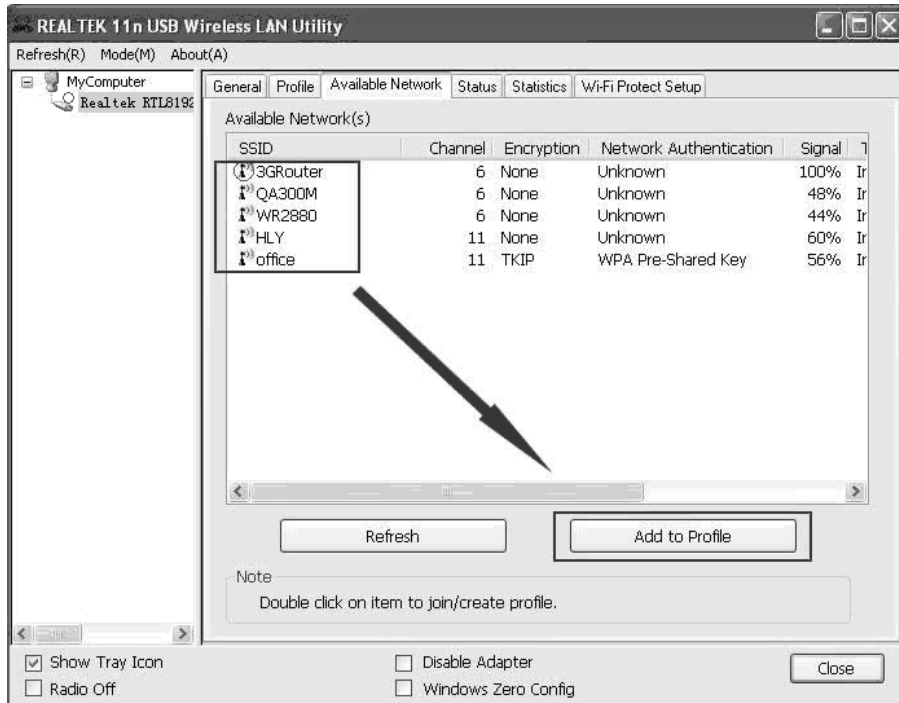


**HERE!**

2. Wireless utility will appear. Click 'Available Network' menu to search for wireless access points nearby.



3. Please wait for a while, and all wireless access points which can be reached by this wireless network card will be displayed here.



If the wireless access point you wish to connect does not appear here, you can click '**Refresh**' button to scan for wireless access points again;

if the wireless access point you're looking for still not appear, try to move the computer closer.

When the access point you're looking for is on the list, left-click it and then double click it or click '**Add to Profile**'.

4. If a password (a.k.a. 'Network Key') is required to access the wireless access point, please input it in '**Network key**' (and input it again in '**Confirm network key**' for confirmation). Click '**OK**' when password is properly inputted.

**NOTE:** Network security type ('**Network Authentication**' and '**Data encryption**') will be selected automatically based on wireless access point's security setting. It's not required to change these settings by yourself.

Wireless Network Properties: [X]

Profile Name: office

Network Name(SSID): office

This is a computer-to-computer(ad hoc) network; wireless access points are not used.

Channel: 11 (2462MHz)

Wireless network security

This network requires a key for the following:

Network Authentication: WPA-PSK

Data encryption: TKIP

ASCII  PASSPHRASE

Key index (advanced): 1

Network key:

Confirm network key:

OK Cancel

802.1x configure

EAP TYPE : GTC

Tunnel : Provision Mode :

Username :

Identity :

Domain :

Password :

Certificate :

PAC :  Auto Select PAC

All options in this page will be filled automatically according to the access point you wish to add to profile. However, you can still modify any of them to meet your requirement.

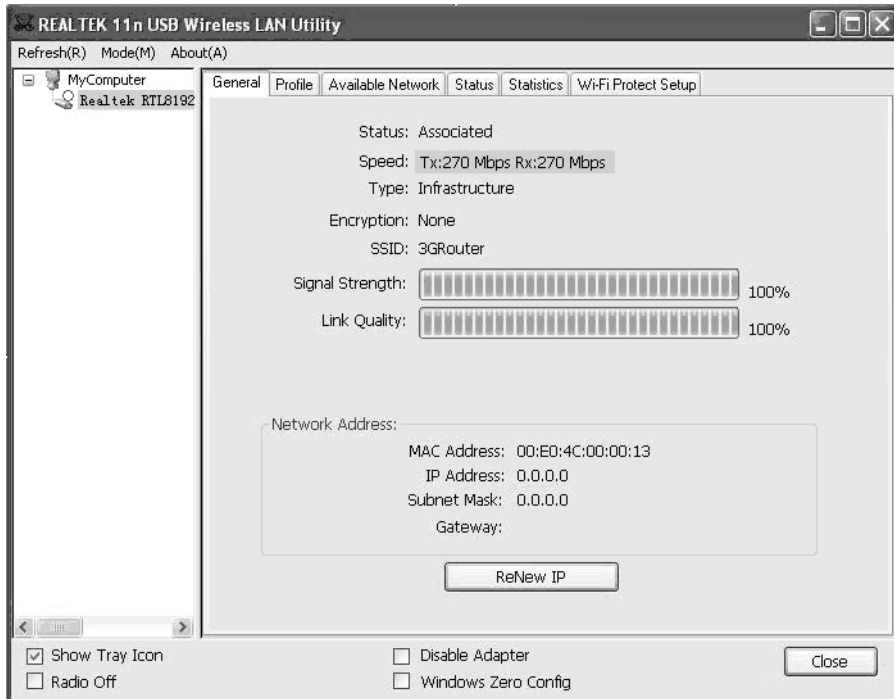
Profile name	You can give a name to this profile, so you can remember its purpose easily. It can be any phrase to help you remember.
Network Name (SSID)	The SSID (Service Set Identifier, i.e. access point's name). This field will be filled as the access point you selected when SSID is not hidden and grayed out. If SSID is hidden, you have to input correct SSID you yourself.
This is a computer-to-computer (ad hoc) network	Check this box if you wish to connect to another computer / network device by ad hoc method. When not accessing to wireless access point, you have to check this box.
Channel	Select wireless channel for ad hoc connection. This option only appears when you're using ad hoc connection.
Network Authentication	Select the network authentication type from drop-down menu. This setting must be identical with the setting of wireless access point you wish to connect.
Data encryption	Select the data encryption type from drop-down menu. This setting must be identical with the setting of wireless access point you wish to connect.
ASCII / PASSPHRASE	<p>When the encryption type is 'WEP', it's required to input a set of 'passphrase' to connect to wireless access point. Check 'ASCII' or 'PASSPHRASE' depends on the security setting of access point, and input it in the box; if you select 'PASSPHRASE' you also need to select the length of the key.</p> <p>The passphrase must be identical with the setting of wireless access point you wish to connect.</p>
Key index	Select WEP key index. For most of access points you can select '1', but please refer to the setting of the access point.



Network key / Confirm network key	When the encryption type is 'WPA' or 'WPA2-PSK', it's required to input a set of 'passphrase' to connect to wireless access point. Please input the same passphrase in two boxes for confirmation.
EAP TYPE / Tunnel / Provision Mode	When authentication type is any of 802.1X, you have to select EAP type, tunnel, and provision mode from dropdown menu. This setting must be identical with your 802.1x authentication server.
Username / Identity / Domain / Password	Please input 802.1x related authentication information here.
Certificate	If certification is required to authenticate with 802.1x authentication server, please select a local certificate from dropdown list.
PAC	Check this box and PAC (Privilege Access Certificate) will be automatically selected.

Please click **OK** when ready.

5. Network card will attempt to connect to access point now, this may require few seconds to minutes, please be patient. When the **Status** become **Associated**, your computer is connected to access point you selected. Click **Close** to close configuration menu.

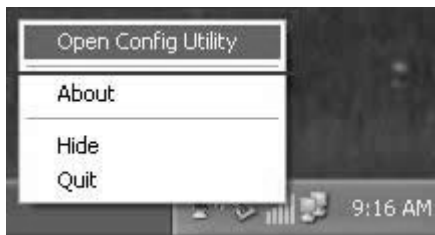


**NOTE:** If you connected to an access point but the connection has been dropped soon, please check security settings and re-check password spelling.

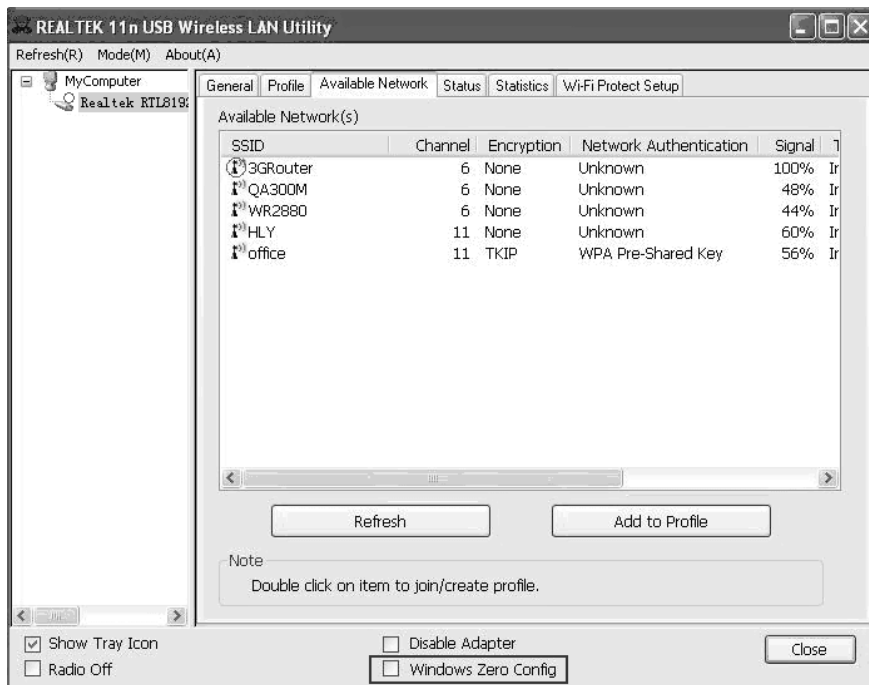
## 2.2.2 Using Windows Zero Configuration

Windows XP and Vista has a built-in wireless network configuration utility, called as '**Windows Zero Configuration**' (WZC). You can also use WZC to configure your wireless network parameter:

1. Right-click Client configuration utility icon, and click '**Open Config Utility**'.



2. Check '**Windows Zero Config**' box.

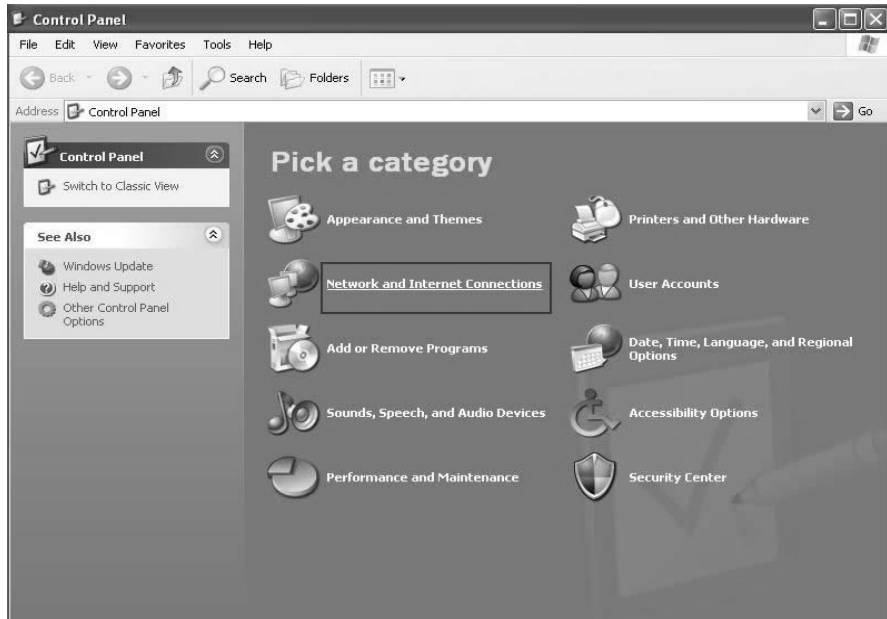


3. A message indicating that you've been switched to Windows Zero.

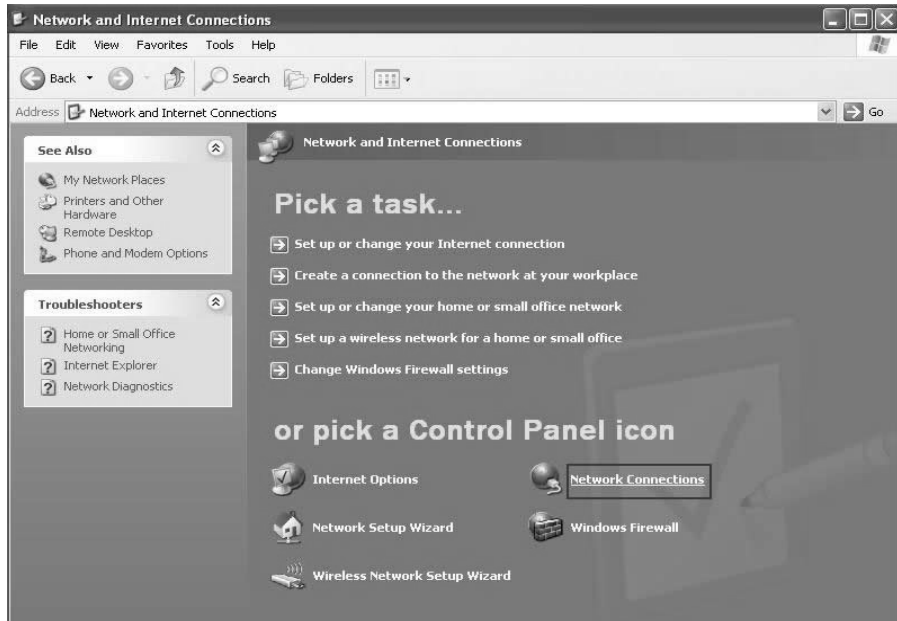


**NOTE:** To return to use Client utility, uncheck 'Windows Zero Config' box.

4. Click '**Start**' button (should be located at the bottom-left corner of windows desktop), click '**Control Panel**', then click '**Network and Internet Connections**' in Control Panel.



5. Double click 'Network Connections'.

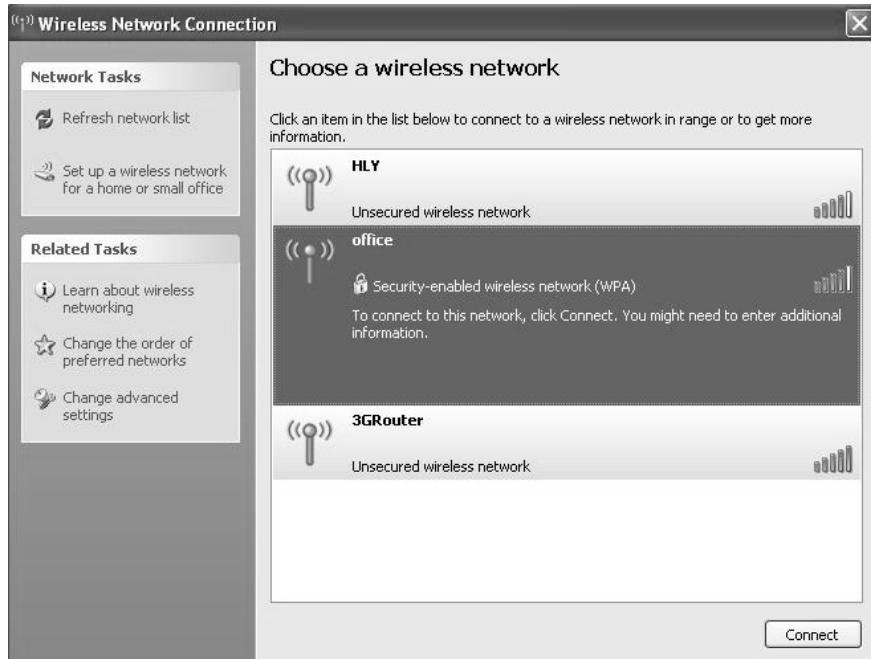


6. Right-click '**Wireless Network Connection**' (it may have a number as suffix if you have more than one wireless network card, please make sure you right-click the Wireless LAN 802.11n USB Network Adapter), then select '**View Available Wireless Networks**'.

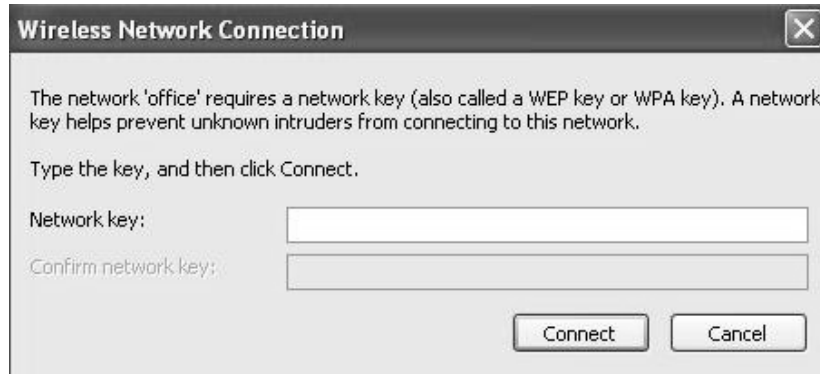


7. All wireless access points in proximity will be displayed here. If the access point you want to use is not displayed here, please try to move your computer closer to the access point, or you can click 'Refresh network list' to rescan access points. Click the access point you want to use if it's shown, then click **Connect**.

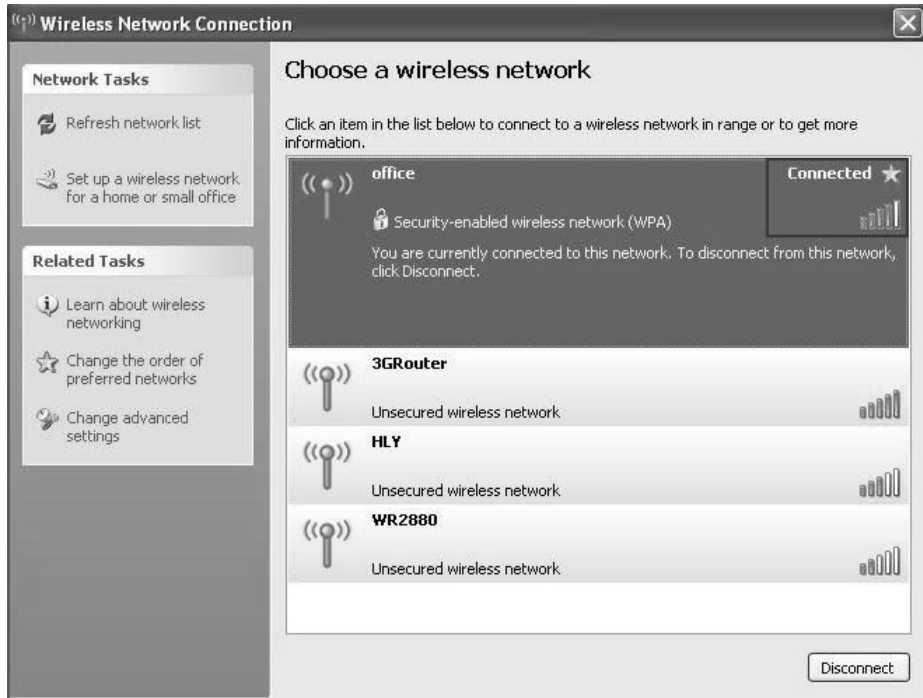




8. If the access point is protected by encryption, you have to input its security key or passphrase here. It must match the encryption setting on the access point. If the access point you selected does not use encryption, you'll not be prompted for security key or passphrase.



9. If you can see '**Connected**' message, the connection between your computer and wireless access point is successfully established.



The screenshot shows a Windows 'Wireless Network Connection' window. On the left, there are two task lists: 'Network Tasks' with 'Refresh network list' and 'Set up a wireless network for a home or small office'; and 'Related Tasks' with 'Learn about wireless networking', 'Change the order of preferred networks', and 'Change advanced settings'. The main area is titled 'Choose a wireless network' and contains a list of networks. The 'office' network is selected and shows a 'Connected' status with a star icon and a signal strength indicator. Below it are three unsecured networks: '3GRouter', 'HLY', and 'WR2880', each with its own signal strength indicator. A 'Disconnect' button is located at the bottom right of the window.

Wireless Network Connection

**Network Tasks**

- Refresh network list
- Set up a wireless network for a home or small office

**Related Tasks**

- Learn about wireless networking
- Change the order of preferred networks
- Change advanced settings

**Choose a wireless network**

Click an item in the list below to connect to a wireless network in range or to get more information.

**office** **Connected** ★

Security-enabled wireless network (WPA)

You are currently connected to this network. To disconnect from this network, click Disconnect.

**3GRouter**  
Unsecured wireless network

**HLY**  
Unsecured wireless network

**WR2880**  
Unsecured wireless network

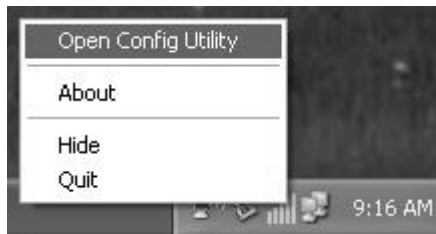
Disconnect

### 3. CLIENT UTILITY

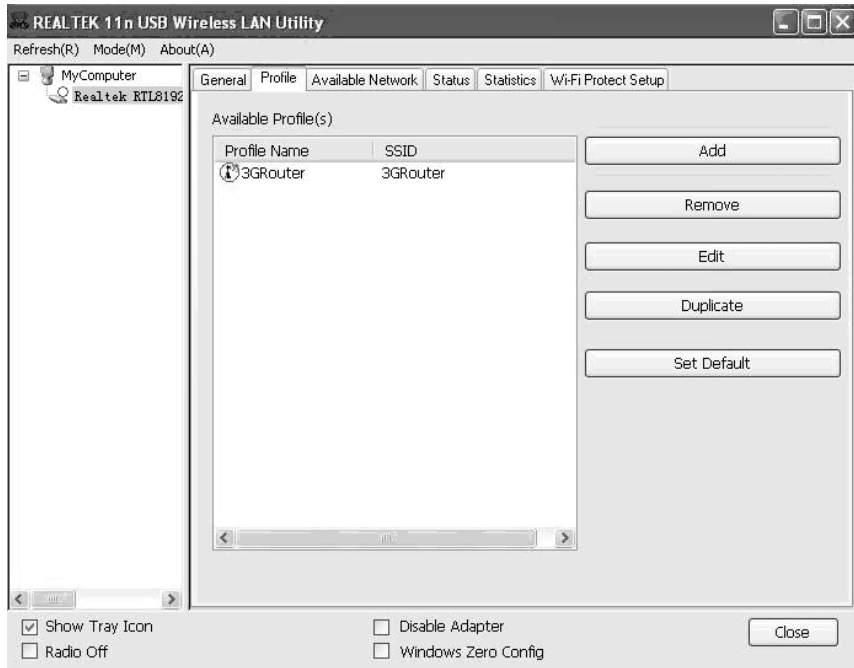
#### 3.1 Connection Profile Management

If you need to connect to different wireless access points at different time, like of access point of your home, office, cybercafe, or public wireless service, you can store the connection parameters (encryption, passphrase, security etc, etc.) as a profile for every access point, so you don't have to input these parameters every time when you want to connect to a specific wireless access point.

To manage profiles, right-click the Client configuration utility icon located at lower-right corner of computer desktop, then click 'Open Config Utility'.



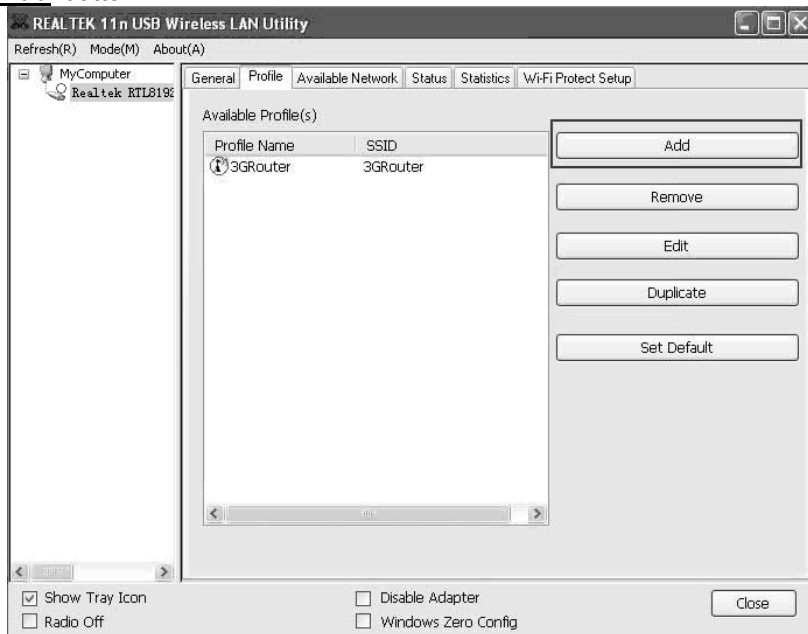
Click the 'Profile' menu.



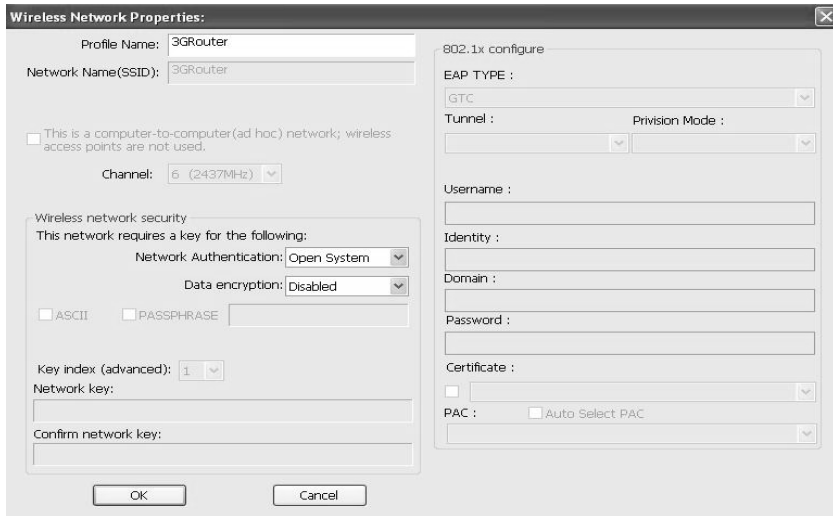
### 3.1.1 Add a new profile

By this function you can setup the connection parameters for a specific wireless access point in advance, without contacting it first.

If you want to create a new profile, click '**Profile**' menu, then click '**Add**' button.



You'll be prompted to input connection parameters for the wireless access point you wish to connect:



Required parameters are:

Profile name	You can give a name to this profile, so you can remember its purpose easily. It can be any phrase to help you remember.
Network Name (SSID)	The SSID (Service Set Identifier, i.e. access point's name). This must be identical with the SSID of the access point you wish to connect.
This is a computer-to-computer	Check this box if you wish to connect to another computer / network device by ad hoc method. When not accessing to wireless access point, you have to check this box.

(ad hoc) network	
Channel	Select wireless channel for ad hoc connection. This option only appears when you're using ad hoc connection.
Network Authentication	Select the network authentication type from drop-down menu. This setting must be identical with the setting of wireless access point you wish to connect.
Data encryption	Select the data encryption type from drop-down menu. This setting must be identical with the setting of wireless access point you wish to connect.
ASCII / PASSPHRASE	<p>When the encryption type is 'WEP', it's required to input a set of 'passphrase' to connect to wireless access point. Check 'ASCII' or 'PASSPHRASE' depends on the security setting of access point, and input it in the box; if you select 'PASSPHRASE' you also need to select the length of the key.</p> <p>The passphrase must be identical with the setting of wireless access point you wish to connect.</p>
Key index	Select WEP key index. For most of access points you can select '1', but please refer to the setting of the access point.
Network key / Confirm network key	When the encryption type is 'WPA' or 'WPA2-PSK', it's required to input a set of 'passphrase' to connect to wireless access point. Please input the same passphrase in two boxes for confirmation.
EAP TYPE / Tunnel / Provision Mode	When authentication type is any of 802.1X, you have to select EAP type, tunnel, and provision mode from dropdown menu. This setting must be identical with your 802.1x authentication server.



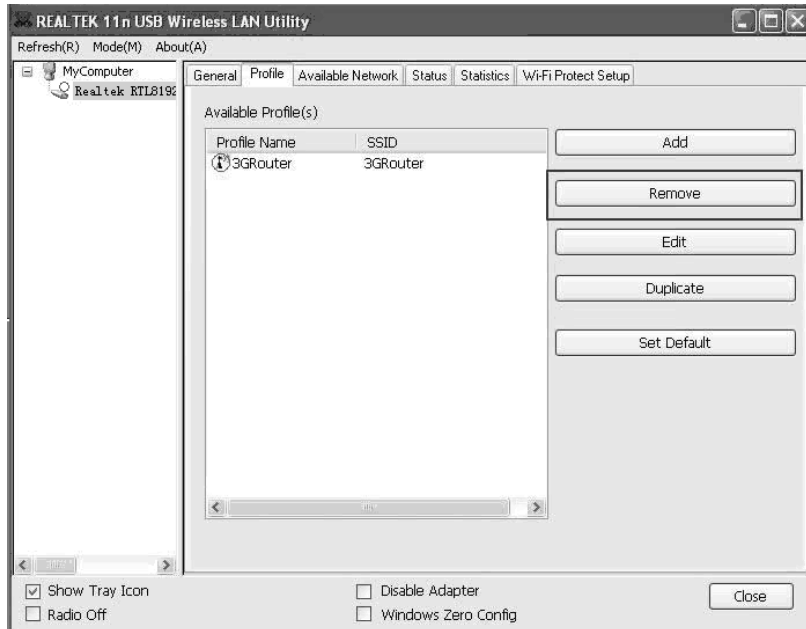
Username / Identity / Domain / Password	Please input 802.1x related authentication information here.
Certificate	If certification is required to authenticate with 802.1x authentication server, please select a local certificate from dropdown list.
PAC	Check this box and PAC (Privilege Access Certificate) will be automatically selected.

When all required parameters are set, click '**OK**' to create and save a new profile.

### 3.1.2 Remove an existing profile

When you no longer need an existing profile, you can remove it.

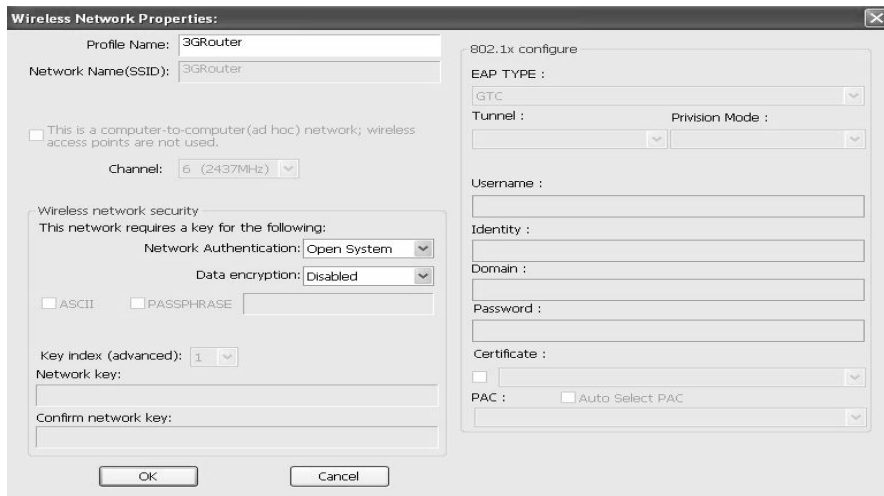
If you want to remove a profile, click '**Profile**' menu, then select an existing profile which you wish to remove, and then click '**Remove**' button.



### 3.1.3 Edit an existing profile

If you have added a profile before, and you wish to change the content of the profile, you can use this function. Please select a profile from the list first, then click '**Edit**' button. You'll be provided with the

contents of selected profile, and you can edit them. Click '**OK**' to save changes, or click '**Cancel**' to discard changes.



**Wireless Network Properties:**

Profile Name: 3GRouter

Network Name (SSID): 3GRouter

This is a computer-to-computer (ad hoc) network; wireless access points are not used.

Channel: 6 (2437MHz)

Wireless network security

This network requires a key for the following:

Network Authentication: Open System

Data encryption: Disabled

ASCII  PASSPHRASE

Key Index (advanced): 1

Network key:

Confirm network key:

OK Cancel

802.1x configure

EAP TYPE : GTC

Tunnel : Provision Mode :

Username :

Identity :

Domain :

Password :

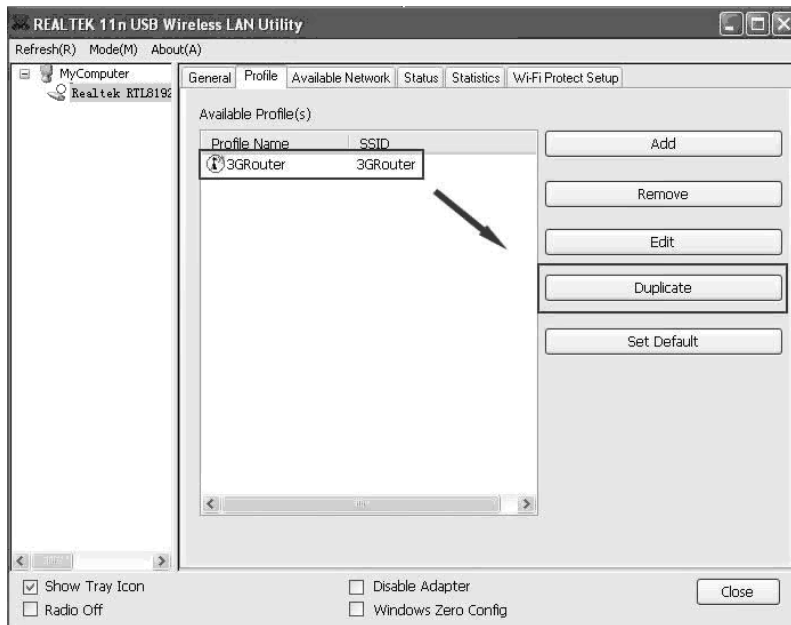
Certificate :

PAC :  Auto Select PAC

### 3.1.4 Make a copy of existing profile

If you need to make a copy of a specific profile, you can use this function. This function is very convenient when you need to build a new profile which parameters are similar to any existing profile.

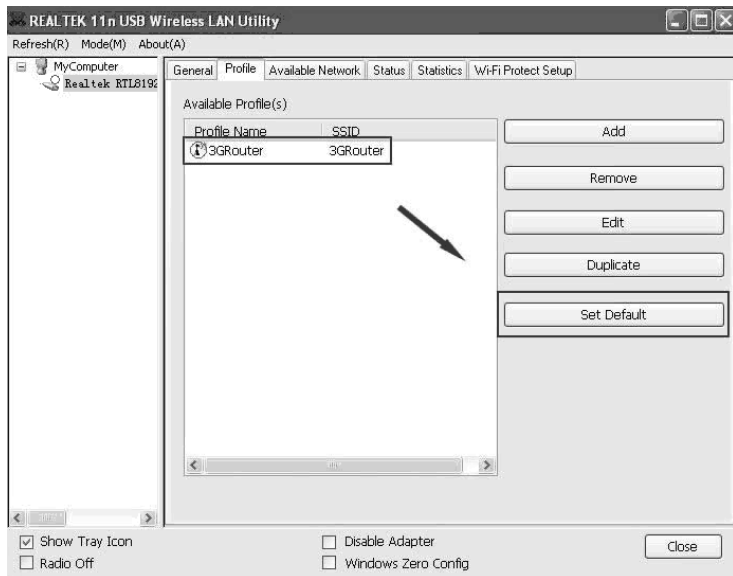
To do this, select an existing profile, then click '**Duplicate**' button.



You'll be prompted to input a profile name, please use an identical name that does not exist in profile list.

### 3.1.5 Set as default profile

If you wish to use a specific profile as default connection, you can select a profile in the list, and click '**Set Default**'. Selected profile will become default selection and Client configuration utility will attempt to connect to selected access point.

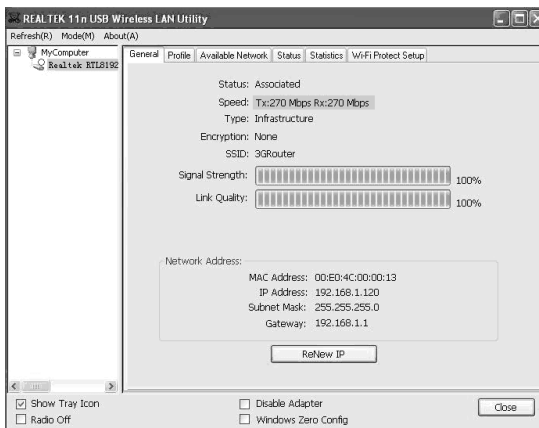


## 3.2 View Network Statistics, General Information, and Status

The configuration utility provides information about network statistics and link status. If you want to know how your wireless network card works, you can use these functions to get detailed information about the wireless connection you're using.

### 3.2.1 General Information

If you want to know the general information of the access point you're connecting to, click '**General**' menu:

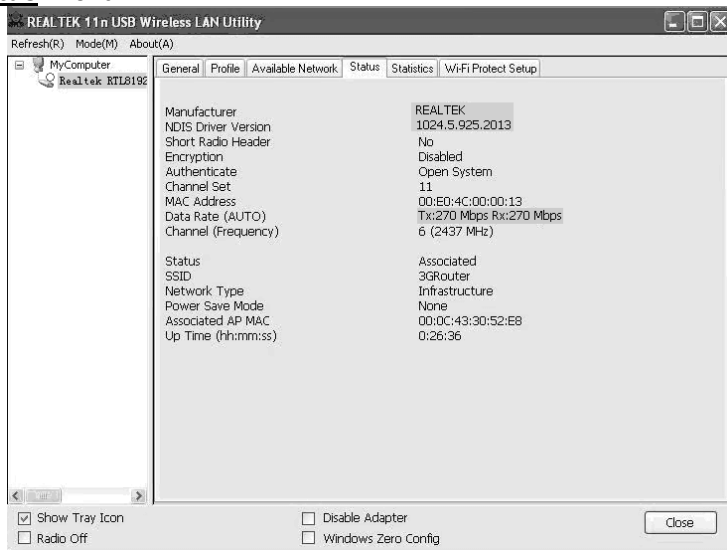


All general information like signal strength and link quality will be displayed here. These information are very useful when you encounter some problem on connecting to access point.

If you wish to get a new IP address from DHCP server, you can click '**ReNew IP**' button.

### 3.2.2 Status

If you want to know the status of your wireless network card, click '**Status**' menu:



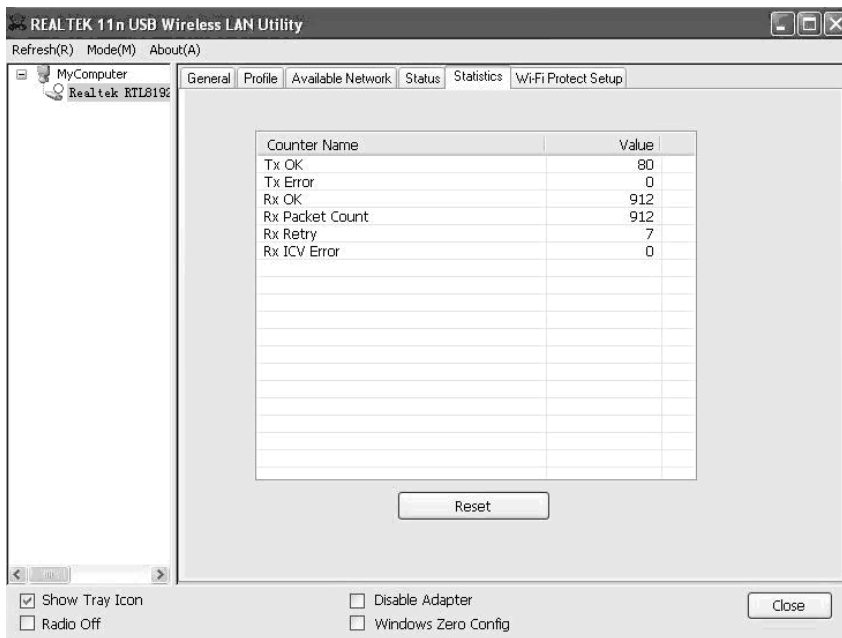
The screenshot shows the 'REALTEK 11n USB Wireless LAN Utility' window with the 'Status' tab selected. The window title bar includes 'Refresh(R)', 'Mode(M)', and 'About(A)'. The main content area displays the following information:

Manufacturer	REALTEK
NDIS Driver Version	1024.5.925.2013
Short Radio Header	No
Encryption	Disabled
Authenticate	Open System
Channel Set	11
MAC Address	00:E0:4C:00:00:13
Data Rate (AUTO)	Tx:270 Mbps Rx:270 Mbps
Channel (Frequency)	6 (2437 MHz)
Status	Associated
SSID	3GRouter
Network Type	Infrastructure
Power Save Mode	None
Associated AP MAC	00:0C:43:30:52:E8
Up Time (h:mm:ss)	0:26:36

At the bottom of the window, there are several checkboxes:  Show Tray Icon,  Radio Off,  Disable Adapter, and  Windows Zero Config. A 'Close' button is located in the bottom right corner.

### 3.2.3 View Network Statistics

To view the statistical data of wireless network card, click '**Statistics**' menu, and the statistics of wireless connection will be displayed:

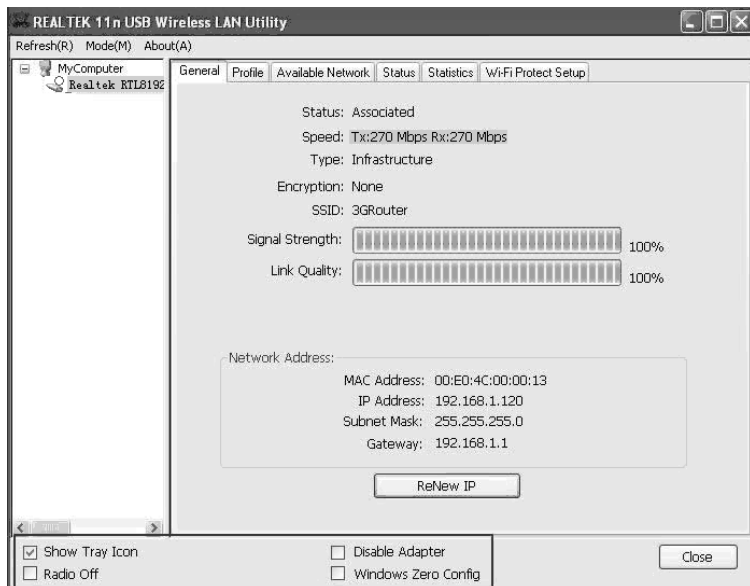





All connection-related statistics is displayed here. You can click '**Reset**' button, to reset the statistics of all items back to 0.

### 3.3 Miscellaneous Settings

There are few functions provided by Client configuration utility, you can access these functions from the bottom of configuration menu:



The descriptions of these function are listed as follow:

<p>Show Tray Icon</p>	<p>Check this box to show an icon on system tray.</p>  <p>Uncheck this box to hide it.</p>
<p>Radio Off</p>	<p>Switch wireless radio off. Wireless network functionalities are disabled.</p>
<p>Disable Adapter</p>	<p>Disable wireless network adapter. All functionalities of configuration menu will disappear. To resume, uncheck 'Disable Adapter'.</p>
<p>Windows Zero Config</p>	<p>Use Windows Zero Configuration to manage wireless connections. See section 2.2.2.</p>

### 3.4 Establish secure connection with AP by WPS

Wi-Fi Protected Setup (WPS) is the latest wireless network technology which makes wireless network setup become very simple. If you have WPS-enabled wireless access point, and you want to establish a secure connection to it, you don't have to configure the wireless access point and setup data encryption by yourself. All you have to do is to go to the WPS setup page of this wireless card, click a button, and then press a specific button or enter a set of 8-digit code on

the wireless access point you wish to establish a secure connection - just three simple steps!

For older wireless access points, it's possible to perform a firmware upgrade to become a WPS-enabled access point. Since they may not have a hardware button to press for WPS setup, you can use an alternative WPS setup method - input the pin code. Every WPS-compatible wireless network card support pin code configuration method; you can just input the code to wireless access point, and the wireless access point and wireless network card will do the rest for you.

This wireless network card is compatible with WPS. To use this function, the wireless access point you wish to connect to must support WPS function too. Now, please follow the following instructions to establish secure connection between WPS-enabled wireless access point and your wireless network card.

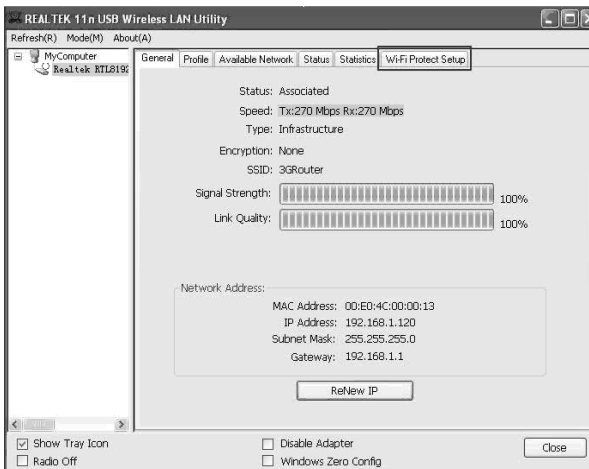
This wireless network card supports 2 kinds of WPS: PIN code and Push-Button.

Please follow the following instructions to setup WPS:

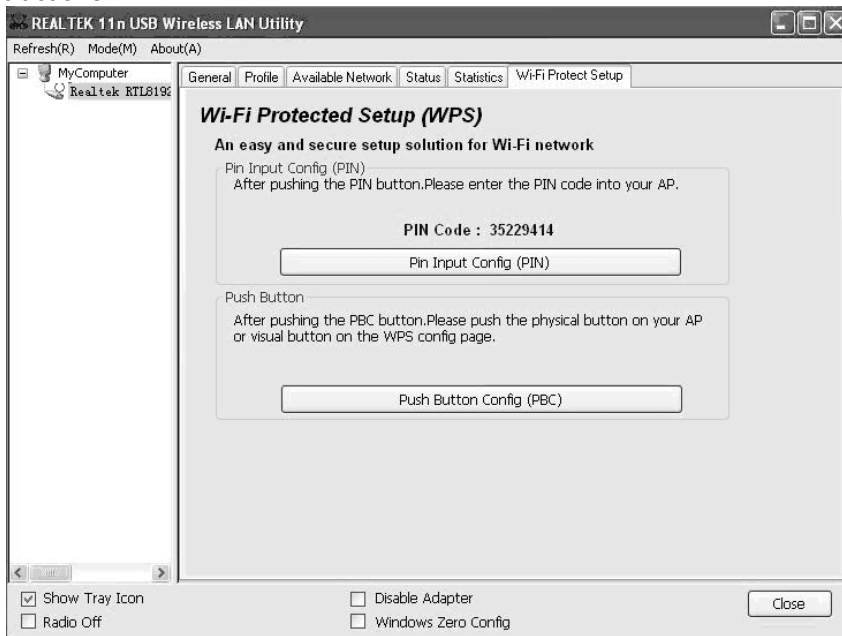
1. Right-click Client configuration utility icon, and click '**Open Config Utility**'.



2. Click **'Wi-Fi Protect Setup'** menu.

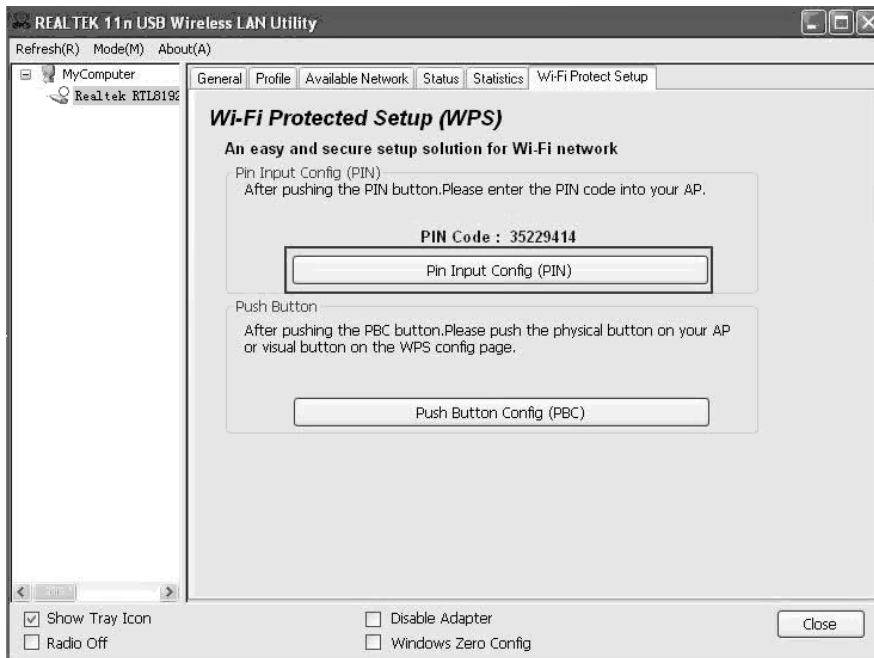


3. You can use PIN code or Push-Button configuration, and WPS-compatible wireless access point must use the same type of WPS. For instructions on setup each type of WPS, see next 2 chapters for detailed instructions.

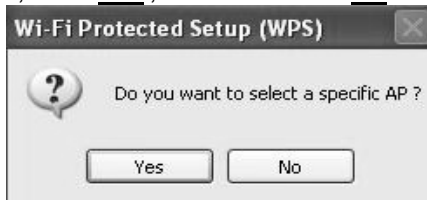


### 3.4.1 PIN Code

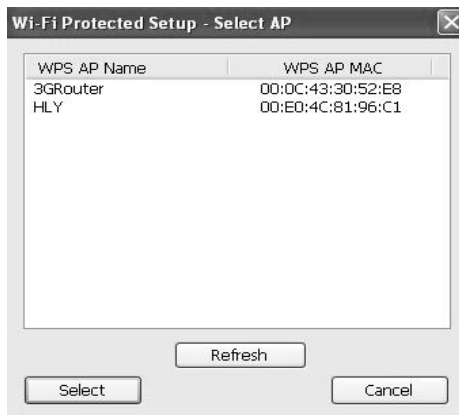
To use PIN Code, please click '**Pin Input Config (PIN)**' button:



You'll be prompted to select an access point you wish to connect. If you know its SSID, click '**Yes**', otherwise click '**No**'.



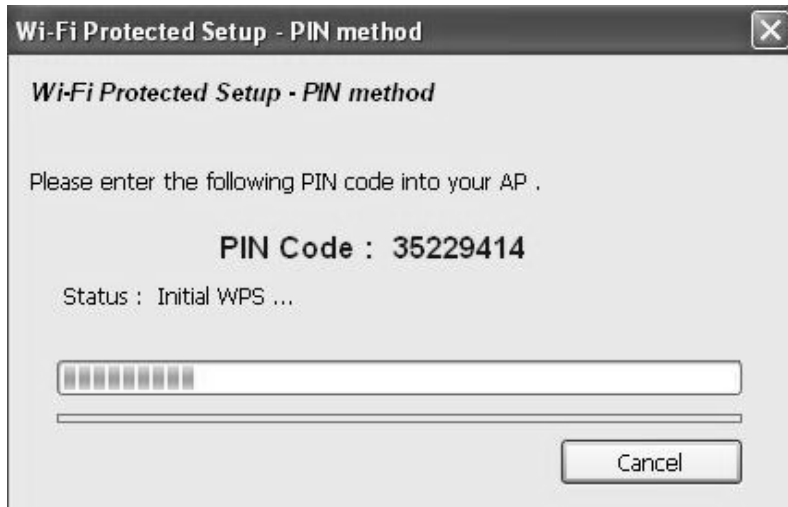
If you select '**Yes**', a list of all WPS-compatible AP nearby will be displayed; you can click '**Refresh**' to rescan, then select an AP and click '**Select**' button.



If you select '**No**', wireless network card will prompt you to enter 8-digit PIN code into your AP, without selecting an AP in advance.

After you select '**Yes**' or '**No**' in previous step, network card will attempt to connect to WPS-compatible AP, and an 8-digit number will appear. Please input this number to AP's configuration menu within 2 minutes, and network card will establish secure connection with AP automatically.

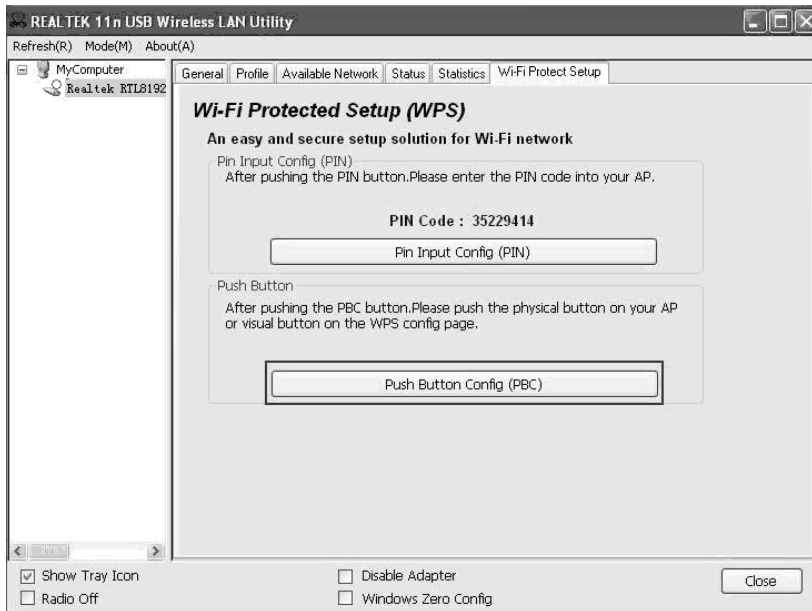
To stop this procedure before connection is established, click '**Cancel**'.



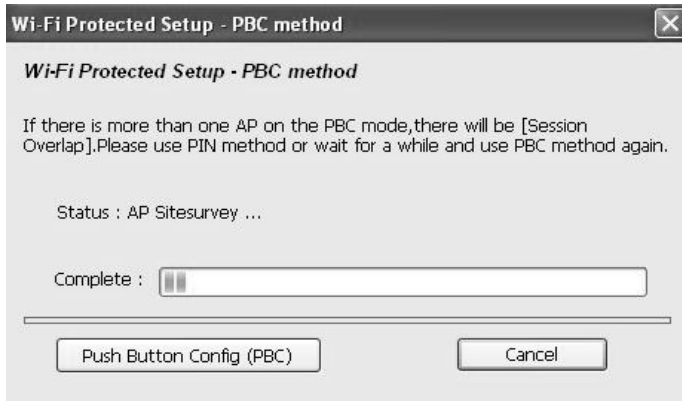


### 3.4.2 Push Button

To use Push-Button WPS configuration, please click '**Push Button Config (PBC)**' button. This is the easiest way to establish secure connection by WPS, but if there're more than one WPS-compatible AP using Push-Button config, please use PIN Code instead.



After you click “**Push Button Config(PBC)**”, a message box will appear:



Please activate Push-Button function on wireless access point now, and wireless network card will establish secure connection with access point within one minute.

#### 4. SOFT-AP FUNCTION

Excepting become a wireless client of other wireless access points, this wireless adapter can act as a wireless service provider also! You can switch this wireless adapter's operating mode to 'AP' mode to simulate the function of a real wireless access point by software, and all

other computers and wireless devices can connect to your computer wirelessly, even share the internet connection you have!

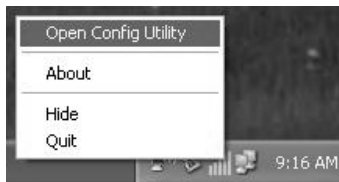
Please follow the instructions in following chapters to use the AP function of your wireless card.

#### 4.1 Switch to AP Mode and Station Mode

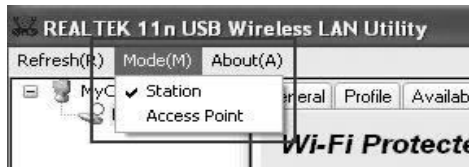
The operating mode of the wireless card is 'Station Mode' (becoming a client of other wireless access points) by default.

Please follow the following instructions to switch to AP mode:

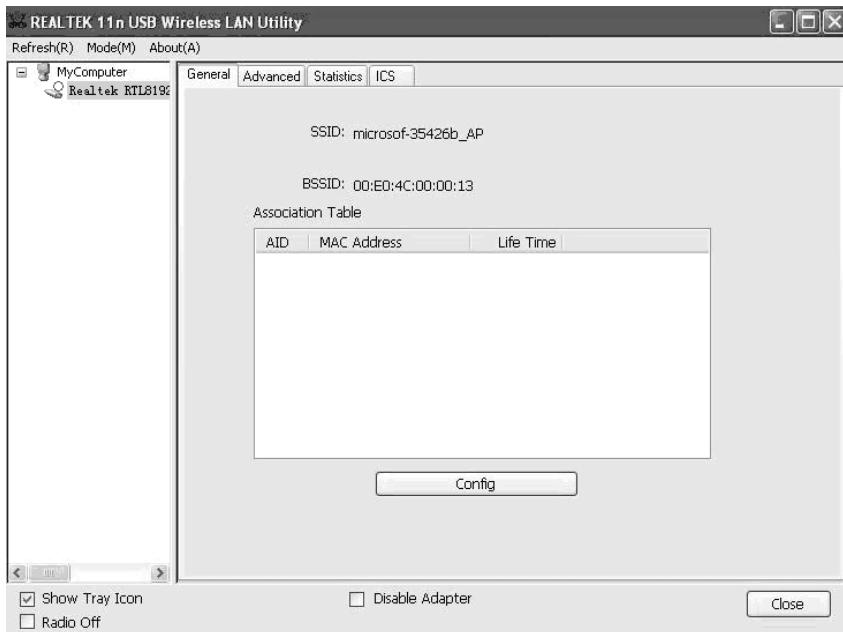
1. Right-click Client configuration utility icon, and click '**Open Config Utility**'.



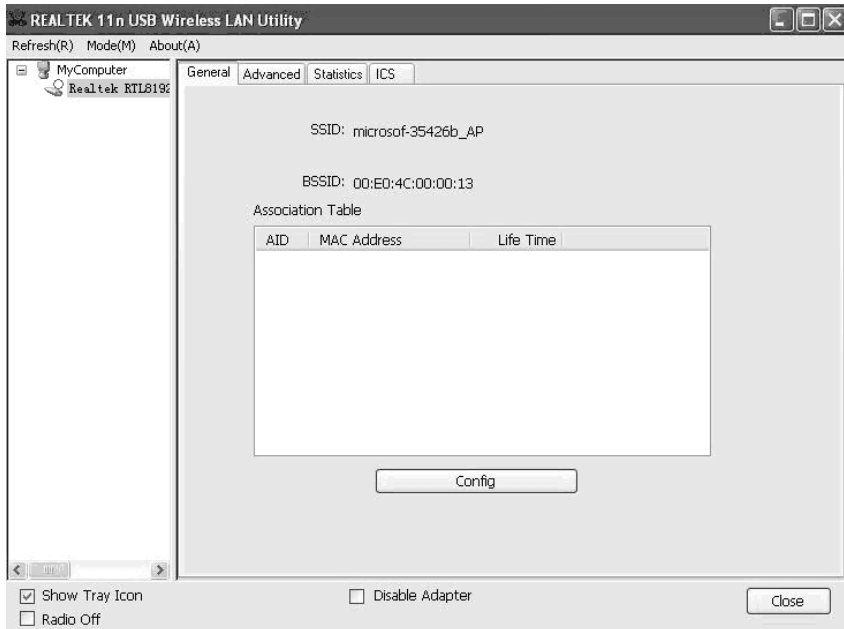
2. Select '**Mode**', and then select '**Access Point**'.
- 3.



It requires few seconds to switch to AP mode, please be patient.



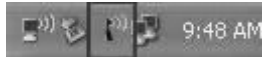
After mode switch is complete, you'll see general information of software AP, which shows AP's SSID and connected wireless clients.



Client mode icon :

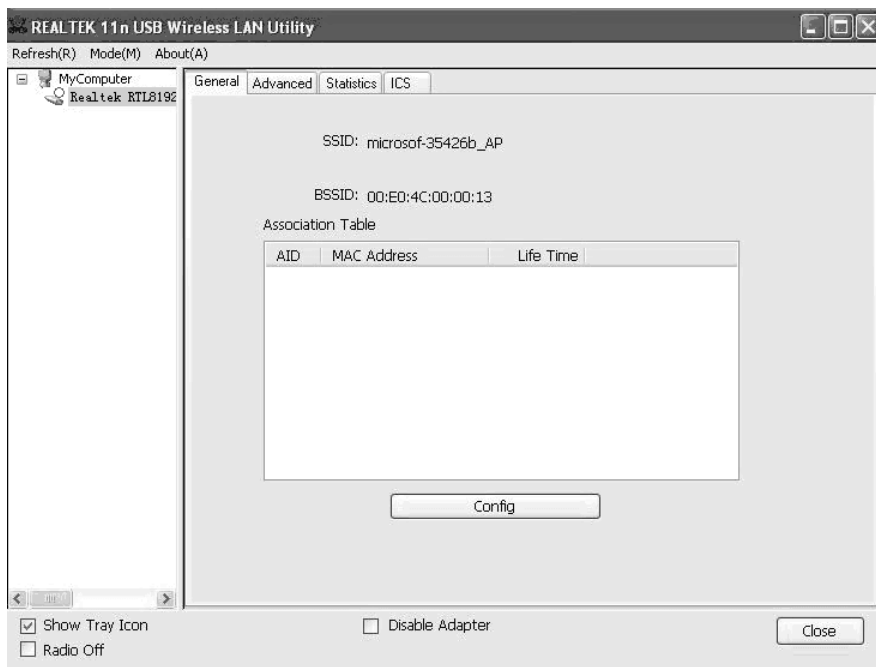


Software AP icon:

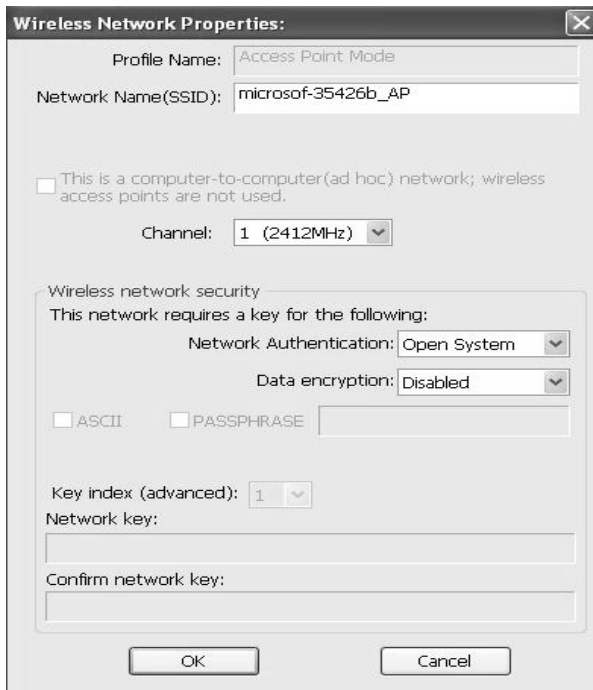


#### 4.1.1 Configure SSID and Channel

To configure software AP, click 'Config' button:



The 'Wireless Network Properties' is displayed.



Please note that Ad-Hoc mode is not available when network card is

in AP mode. The description of major setup items are listed below:

Network Name (SSID)	Please input the SSID (the name used to identify this wireless access point) here. Up to 32 numerical characters can be accepted here, <u>excepting space</u> .
Channel	Please select the wireless channel you wish to use, from 1 to 13.

To save changes, click '**OK**'; otherwise click '**Cancel**' to leave this menu and keep settings untouched.

#### **4.1.2 Setup Soft AP Security**

To setup security options for Soft-AP, configure 'Wireless Network Security' section as follow:



**Wireless Network Properties:** [X]

Profile Name:

Network Name(SSID):

This is a computer-to-computer(ad hoc) network; wireless access points are not used.

Channel:  [v]

Wireless network security

This network requires a key for the following:

Network Authentication:  [v]

Data encryption:  [v]

ASCII     PASSPHRASE

Key index (advanced):  [v]

Network key:

Confirm network key:

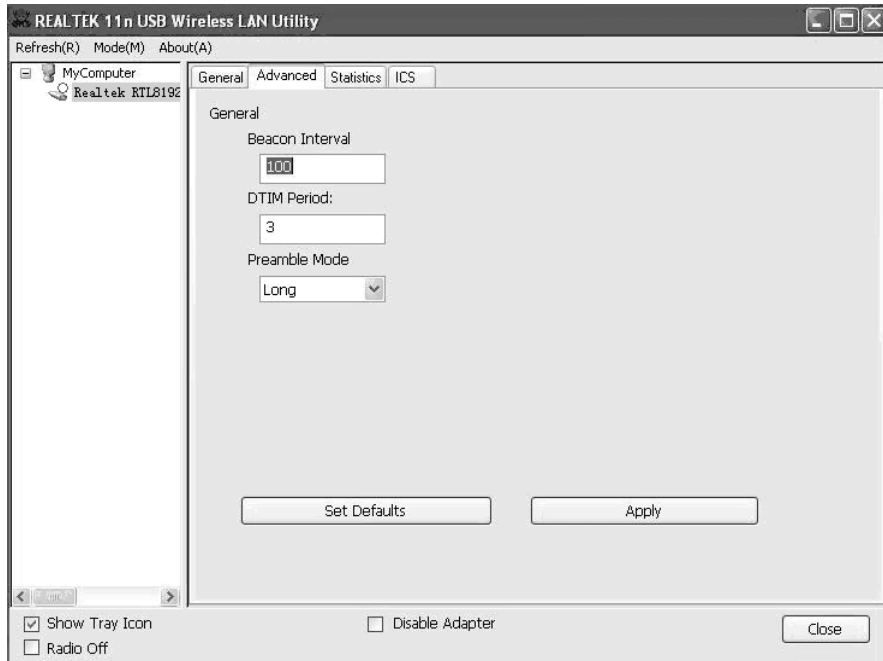
The description of setup items about wireless security are listed below:

Network Authentication	Select network authentication mode from dropdown menu.
Data Encryption	Select data encryption method from dropdown menu.
ASCII / PASSPHRASE	If the encryption method is WEP, check either 'ASCII' or 'PASSPHRASE' box and input it in the box as WEP passphrase.
Key Index	Select WEP key index (1-4). If you don't know which one you should use, select 1.
Network key / Confirm network key	IF network authentication mode is WPA, please input WPA passphrase in both box.

To save changes, click '**OK**'; otherwise click '**Cancel**' to leave this menu and keep settings untouched.

## 4.2 Advanced Settings

If you want to setup advanced settings of software access point, select '**Advanced**' menu. If you don't know the meaning and affects of these settings, keep them untouched.



The description of all setup items are listed below:

Beacon Interval	Please input wireless beacon time interval here.
DTIM Period	Please input DTIM (Delivery Traffic Indication Message) here.
Preamble Mode	Select wireless frame preamble mode (long or short) from dropdown menu.
Set Defaults	Reset all settings back to factory default value.
Apply	Save changes.

If you changed any setting here and cause problem on communicating with wireless clients, click '**Set Defaults**' to reset all settings back to default setting.

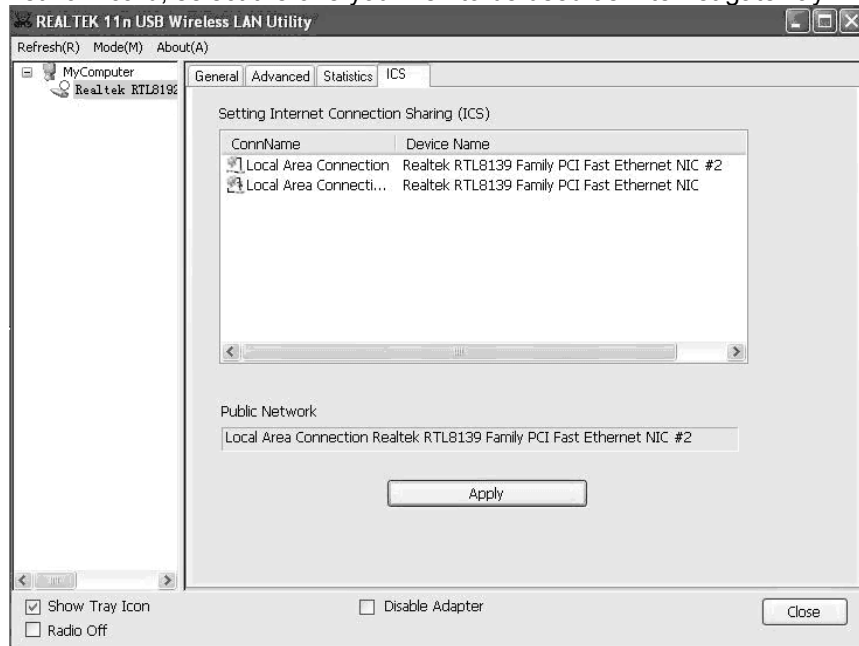
### 4.3 Wireless Statistics

Select '**Statistics**' menu and the data statistics about software access point will be displayed.



path for all wireless clients to get connected to Internet.

If you have only one network card (except this software access point), you don't have to select network card here; if you have more than one network card, select the one you wish to be used as Internet gateway.



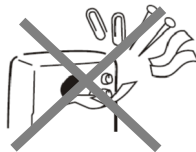
Click '**Apply**' to save changes ('**Apply**' is grayed out when no changes are made in this page).

## 5. TROUBLESHOOTING

If you encounter any problem when you're using this wireless network card, don't panic! Before you call your dealer of purchase for help, please check this troubleshooting table, the solution of your problem could be very simple, and you can solve the problem by yourself !

Scenario	Solution
I can't find any wireless access point / wireless device in ' <b>Site Survey</b> ' function.	<ol style="list-style-type: none"><li>1. Click '<b>Rescan</b>' for few more times and see if you can find any wireless access point or wireless device.</li><li>2. Please move closer to any known wireless access point.</li><li>3. Ad hoc' function must be enabled for the wireless device you wish to establish a direct wireless link.</li><li>4. Please adjust the position of network card (you may have to move your computer if you're using a notebook computer) and click '<b>Rescan</b>' button for few more times. If you can find the wireless access point or wireless device you want to connect by doing this, try to move closer to the place where the wireless access point or wireless device is located.</li></ol>
Nothing happens when I click ' <b>Open Config Utility</b> '	<ol style="list-style-type: none"><li>1. Please make sure the wireless network card is inserted into your computer's USB port.</li><li>2. Reboot the computer and try again.</li><li>3. Remove the card and insert it into another USB port.</li><li>4. Remove the driver and re-install.</li><li>5. Contact the dealer of purchase for help.</li></ol>

<p>I can not establish connection with a certain wireless access point</p>	<ol style="list-style-type: none"> <li>1. Click '<b>Add to Profile</b>' for few more times.</li> <li>2. If the SSID of access point you wish to connect is hidden (nothing displayed in 'SSID' field in '<b>Site Survey</b>' function), you have to input correct SSID of the access point you wish to connect. Please contact the owner of access point to ask for correct SSID.</li> <li>3. You have to input correct passphrase / security key to connect an access point with encryption. Please contact the owner of access point to ask for correct passphrase / security key.</li> <li>4. The access point you wish to connect only allows network cards with specific MAC address to establish connection. Please go to '<b>Status</b>' menu and write the value of '<b>MAC Address</b>' down, then present this value to the owner of access point so he / she can add the MAC address of your network card to his / her access point's list.</li> </ol>
<p>The network is slow / having problem when transferring large files</p>	<ol style="list-style-type: none"> <li>1. Move closer to the place where access point is located.</li> <li>2. There could be too much people using the same radio channel. Ask the owner of the access point to change the channel number.</li> </ol> <p>Please try one or more solutions listed above.</p>





<p><b>(ENG) Declaration of conformity</b></p> <p>This product is tested and complies with the essential requirements of the laws of member states concerning RED (2014/53/EU), RoHS (2011/65/EU). The CE declaration can be found under <a href="http://www.gembird.eu">www.gembird.eu</a></p>
<p><b>(DE) Konformitätserklärung</b></p> <p>Dieses Produkt wurde getestet und stimmt mit den grundlegenden Anforderungen der Richtlinie RED (2014/53/EU), RoHS (2011/65/EU) überein. Die Konformitätserklärung kann auf unserer Webseite <a href="http://www.gembird.eu">www.gembird.eu</a> heruntergeladen werden.</p>
<p><b>(ES) Declaración de conformidad</b></p> <p>Este producto está probado y cumple con los requisitos esenciales de las leyes de los estados miembros con respecto a RED (2014/53/EU), RoHS (2011/65/EU). La declaración CE se puede encontrar en <a href="http://www.gembird.eu">www.gembird.eu</a></p>
<p><b>(CZ) Prohlášení o shodě</b></p> <p>Tento produkt je testován a splňuje základní požadavky právních předpisů členských států týkajících se RED (2014/53/EU), RoHS (2011/65/EU). Prohlášení CE naleznete na <a href="http://www.gembird.eu">www.gembird.eu</a></p>
<p><b>(FR/BE) Déclaration de conformité</b></p> <p>Le produit est contrôlé et remplit les exigences des directives nationales et de la directive RED (2014/53/EU), RoHS (2011/65/EU). La conformité CE a été démontrée et les déclarations correspondantes sont déposées chez le fabricant a: <a href="http://www.gembird.eu">www.gembird.eu</a></p>
<p><b>(HR) Izjava o sukladnosti</b></p> <p>Ovaj je proizvod testiran i udovoljava osnovnim zahtjevima zakona država članica u vezi RED (2014/53/EU), RoHS (2011/65/EU). Izjava CE se može naći pod <a href="http://www.gembird.eu">www.gembird.eu</a></p>
<p><b>(IT) Dichiarazione di conformità</b></p> <p>Questo prodotto è testato ed è conforme ai requisiti essenziali delle leggi degli stati membri in materia di RED (2014/53/EU), RoHS (2011/65/EU). La dichiarazione CE è disponibile all'indirizzo <a href="http://www.gembird.eu">www.gembird.eu</a></p>
<p><b>(PT) Declaração de conformidade</b></p> <p>Este produto foi testado e está em conformidade com os requisitos essenciais das leis dos estados membros sobre RED (2014/53/EU), RoHS (2011/65/EU). A declaração CE pode ser encontrada em <a href="http://www.gembird.eu">www.gembird.eu</a></p>
<p><b>(PL) Deklaracja zgodności</b></p> <p>Ten produkt został przetestowany i jest zgodny z zasadniczymi wymaganiami prawnymi państw członkowskich dotyczącymi RED (2014/53/EU), RoHS (2011/65/EU). Deklaracja CE znajduje się na stronie <a href="http://www.gembird.eu">www.gembird.eu</a></p>
<p><b>(RO) Declarație de conformitate</b></p> <p>Acest produs este testat și respectă cerințele esențiale ale legislațiilor statelor membre privind RED (2014/53/EU), RoHS (2011/65/EU). Declarația CE se găsește pe <a href="http://www.gembird.eu">www.gembird.eu</a></p>
<p><b>(SK) Vyhlásenie o zhode</b></p> <p>Tento produkt je testovaný a spĺňa základné požiadavky právnych predpisov členských štátov týkajúcich sa RED (2014/53/EU), RoHS (2011/65/EU). Vyhlásenie CE nájdete na stránke <a href="http://www.gembird.eu">www.gembird.eu</a></p>
<p><b>(SL) Izjava o skladnosti</b></p> <p>Ta izdelek je preizkušen in ustreza bistvenim zahtevam zakonov držav članic o RED (2014/53/EU), RoHS (2011/65/EU). Izjava CE je na voljo pod <a href="http://www.gembird.eu">www.gembird.eu</a></p>
<p><b>(GR) Δήλωση συμμόρφωσης</b></p> <p>Αυτό το προϊόν έχει ελεγχθεί και συμμορφώνεται με τις βασικές απαιτήσεις των νομοθεσιών των κρατών μελών όσον αφορά την Ευρωπαϊκή οδηγία g RED (2014/53/EU), RoHS (2011/65/EU). Η δήλωση CE μπορεί να βρεθεί στην διεύθυνση <a href="http://www.gembird.eu">www.gembird.eu</a></p>

<p><b>(ENG) Waste disposal:</b> Do not deposit this equipment with the household waste. Improper disposal can harm both the environment and human health. For information about waste collection facilities for used electrical and electronic devices, please contact your city council or an authorized company for the disposal of electrical and electronic equipment.</p>
<p><b>(DE) Entsorgungshinweise:</b> Werfen Sie dieses Gerät nicht in den Hausmüll. Unsachgemäße Entsorgung kann sowohl der Umwelt als auch der menschlichen Gesundheit schaden. Informationen zu Sammelstellen für Altgeräte erhalten Sie bei Ihrer Stadtverwaltung oder einer autorisierten Stelle für die Entsorgung von Elektro- und Elektronikgeräten.</p>
<p><b>(ES) Depósito de basura:</b> No depositare este equipo con la basura doméstica. La eliminación inadecuada puede dañar tanto el medio ambiente como la salud humana. Para obtener información sobre las instalaciones de recolección de desechos para dispositivos eléctricos y electrónicos usados, comuníquese con su ayuntamiento o una empresa autorizada para la eliminación de equipos eléctricos y electrónicos.</p>
<p><b>(CZ) Nakládání s odpady:</b> Toto zařízení nevkládejte do domovního odpadu. Nesprávná likvidace může poškodit životní prostředí i lidské zdraví. Informace o zařízení pro sběr odpadu použitých elektrických a elektronických zařízení získáte u městského rady nebo autorizované společnosti o likvidaci elektrických a elektronických zařízení.</p>
<p><b>(FR/BE) Traitement des déchets:</b> Ne jetez pas cet appareil dans les déchets domestiques. Un traitement inapproprié peut être dommageable à l'environnement et à la santé humaine. Vous trouvez des informations sur les centres de rassemblement des appareils vieux chez l'administration municipale ou chez un centre autorisé pour le traitement des appareils électriques ou électroniques.</p>
<p><b>(HR) Odlaganje smeća:</b> Ovu opremu ne odlažite zajedno s kućnim otpadom. Nepravilno odlaganje može naštetiti okolišu i ljudskom zdravlju. Za informacije o objektima za prikupljanje otpada za rabljenje električne i elektroničke uređaje obratite se gradskom vijeću ili ovlaštenom društvu za odlaganje električne i elektroničke opreme.</p>
<p><b>(IT) Smaltimento dei rifiuti:</b> Non depositare questa apparecchiatura con i rifiuti domestici. Lo smaltimento improprio può danneggiare sia l'ambiente che la salute umana. Per informazioni sulle strutture di raccolta dei rifiuti per i dispositivi elettrici ed elettronici usati, contattare il comune o una società autorizzata per lo smaltimento delle apparecchiature elettriche ed elettroniche.</p>
<p><b>(PT) Depósito de lixo:</b> Não deposite este equipamento no lixo doméstico. O descarte inadequado pode prejudicar o meio ambiente e a saúde humana. Para obter informações sobre instalações de coleta de lixo para dispositivos elétricos e eletrônicos usados, entre em contato com o conselho da cidade ou uma empresa autorizada para o descarte de equipamentos elétricos e eletrônicos.</p>
<p><b>(PL) Utylizacja odpadów:</b> Nie należy deponować tego sprzętu razem z odpadami domowymi. Niewłaściwa utylizacja może zaszkodzić zarówno środowisku, jak i zdrowiu ludzkiemu. Aby uzyskać informacje na temat urządzeń do zbierania zużytych urządzeń elektrycznych i elektronicznych, należy skontaktować się z radą miasta lub upoważnioną firmą w celu usunięcia sprzętu elektrycznego i elektronicznego.</p>
<p><b>(RO) Eliminarea deșeurilor:</b> Nu depuneți acest echipament cu deșeurile menajere. Eliminarea necorespunzătoare poate dauna atât mediului, cât și sănătății umane. Pentru informații despre instalațiile de colectare a deșeurilor pentru dispozitive electrice și electronice folosite, vă rugăm să contactați consiliul municipal sau o companie autorizată pentru eliminarea echipamentelor electrice și electronice.</p>
<p><b>(SK) Likvidácia odpadu:</b> Toto zariadenie nevkladajte do domového odpadu. Nesprávna likvidácia môže poškodiť životné prostredie a ľudské zdravie. Informácie o zariadeniach na zber použitého odpadu z elektrických a elektronických zariadení získate od mestského zastupiteľstva alebo od autorizovanej spoločnosti o likvidácii elektrických a elektronických zariadení.</p>
<p><b>(SL) Odlaganje odpadkov:</b> Te opreme ne odlagajte skupaj z gospodinjskimi odpadki. Nepravilno odstranjevanje lahko škoduje okolju in zdravju ljudi. Za informacije o napravah za zbiranje odpadnih električnih in elektronskih naprav se obrnite na mestni svet ali pooblaščen podjetje za odstranjevanje električne in elektronske opreme.</p>
<p><b>(GR) Διαχείριση απορριμμάτων:</b> Μην καταθέτετε αυτόν τον εξοπλισμό στα οικιακά απορρίμματα. Η ακατάλληλη απόρριψη μπορεί να βλάψει τόσο το περιβάλλον όσο και την ανθρώπινη υγεία. Για πληροφορίες σχετικά με τις εγκαταστάσεις συλλογής απορριμμάτων για χρησιμοποιούμενες ηλεκτρικές και ηλεκτρονικές συσκευές, επικοινωνήστε με το δημοτικό συμβούλιο ή μια εξουσιοδοτημένη εταιρεία για τη διάθεση ηλεκτρικών και</p>

**(ENG) WARRANTY CONDITIONS**

The receipt must clearly list the date of purchase and the part number, in addition it should be printed. Keep the receipt for the entire warranty period since it is required for all warranty claims. During the warranty period the defective items will be credited, repaired or replaced at the manufacturer's expense. Work carried out under the warranty neither extends the warranty period nor starts a new warranty period. The manufacturer reserves the right to void any warranty claim for damages or defects due to misuse, abuse or external impact (falling down, impact, ingress of water, dust, contamination or break). Wearing parts (e.g. rechargeable batteries) are excluded from the warranty. Upon receipt of the RMA goods, Gembird Europe B.V. reserves the right to choose between replacement of defective goods or issuing a credit note. The credit note amount will always be calculated on the basis of the current market value of the defective products.

Gembird Europe B.V. Wittevrouwen 56, 1358CD Almere, The Netherlands  
[www.gembird.nl/service/support@gembird.nl](mailto:support@gembird.nl)

**(DE) GARANTIE BEDINGUNGEN**

Die Garantie beträgt 24 Monate ab Verkaufsdatum an der Endverbraucher. Das Kaufdatum und der Gerätetyp sind durch eine maschinell erstellte Kaufquittung zu belegen. Bitte bewahren Sie Ihren Kaufbeleg daher für die Dauer der Garantie auf, da er Voraussetzung für eine eventuelle Reklamation ist. Innerhalb der Garantiezeit werden alle Mängel, whichever due to the Hersteller entweder durch Instandsetzung, Austausch mangelhafter Teile oder im Austausch, behoben. Die Ausführung der Garantieleistung bewirkt weder eine Verlängerung noch einen Neugibung oder Bruch) herbeigeführt wurden. Verschleißteile (z.B. Akkus) sind von der Garantie ausgenommen. GEMBIIRD Deutschland GmbH

Coesterweg 54, 59494 Soest, Deutschland. [www.gembird.eu](mailto:support@gembird.eu) Wenn Sie Hilfe im Umgang mit unseren Produkten benötigen, können Sie uns kostenlos via E-Mail an [support@gembird.eu](mailto:support@gembird.eu) oder über unser Hilfe-Forum erreichen: <http://forum.gembird-support.de>

**(ES) CONDICIONES DE GARANTIA**

El recibo debe indicar claramente la fecha de compra y el número de pieza, además debe imprimirse. Guarde el recibo durante todo el periodo de garantía, ya que se requiere para todas las reclamaciones de garantía. Durante el periodo de garantía, los artículos defectuosos serán acreditados, reparados o reemplazados por cuenta del fabricante. El trabajo realizado bajo la garantía no extiende el periodo de garantía ni inicia un nuevo periodo de garantía. El fabricante se reserva el derecho de anular cualquier reclamo de garantía por daños o defectos debidos al mal uso, abuso o impacto externo (caída, impacto, ingreso de agua, polvo, contaminación o rotura). Las piezas de desgaste (por ejemplo, baterías recargables) están excluidas de la garantía. Al recibir los productos RMA, Gembird Europe B.V. se reserva el derecho de elegir entre el reemplazo de productos defectuosos o la emisión de una nota de crédito. El monto de la nota de crédito siempre se calculará sobre la base del valor de mercado actual de los productos defectuosos.

Gembird Europe B.V.  
 Wittevrouwen 56, 1358CD Almere, Países Bajos  
[www.gembird.nl/service](mailto:support@gembird.nl)

**(CZ) ZÁRUČNÍ PODMÍNKY**

Potvrzení musí jasně uvádět datum nákupu a číslo dílu, navíc je mělo být vytiskáno. Uchovejte účtenku po dobu záruční doby, protože je vyžadována pro všechny nároky na záruku. Během záruční doby budou vadné položky připsány, opraveny nebo vyměněny na náklady výrobce. Práce prováděné v rámci záruky neprodují žádnou dobu ani nezahajují novou záruční dobu. Výrobce si vyhrazuje právo zrušit jakýkoliv nárok na záruku za škody nebo vady způsobené nesprávným použitím, zneužitím nebo vnějším dopadem (pád, náraz, vniknutí vody, prachu, kontaminace nebo zlomení). Opatřitelné součásti (např. Dobíjecí baterie) jsou ze záruky vyloučeny. Po přijetí zboží RMA si společnost Gembird Europe B.V. vyhrazuje právo vybrat mezi výměnou vadného zboží nebo vystavením dobropisu. Částka dobropisu bude vždy vypočtena na základě aktuální tržní hodnoty vadných produktů.

Gembird Europe B.V.  
 Wittevrouwen 56, 1358CD Almere, Nizozemsko  
[www.gembird.nl/service](mailto:support@gembird.nl)

**(FR)BES) CONDITIONS DE GARANTIE**

Le reçu doit indiquer clairement la date d'achat et le numéro de pièce, en plus il doit être imprimé. Conservez le reçu pendant toute la période de garantie, car il est requis pour toutes les réclamations de garantie. Pendant la période de garantie, les articles défectueux seront crédités, réparés ou remplacés aux frais du fabricant. Les travaux effectués sous la garantie ne prolongent pas la période de garantie ni ne commencent une nouvelle période de garantie. Le fabricant se réserve le droit d'annuler toute demande de garantie pour dommages ou défauts dus à une mauvaise utilisation, un abus ou un impact externe (chute, impact, pénétration d'eau, poussière, contamination ou rupture). Les pièces d'usure (par exemple les piles rechargeables) sont exclues de la garantie. A la réception des marchandises RMA, Gembird Europe B.V. se réserve le droit de choisir entre le remplacement des marchandises défectueuses ou l'émission d'une note de crédit. Le montant de la note de crédit sera toujours calculé sur la base de la valeur marchande actuelle des produits défectueux.

Gembird Europe B.V. Wittevrouwen 56, 1358CD Almere, Pays-Bas  
[www.gembird.nl/service](mailto:support@gembird.nl)

**(HR) UVJETI GARANCUE**

Na potvrdi mora biti jasno naveden datum kupnje i broj dijela, osim toga treba biti ispisani. Čuvajte potvrdu tijekom cijelog jamstvenog razdoblja jer je potrebna za sve garancijske zahtjeve. Tijekom jamstvenog razdoblja neispravni proizvodi bit će vraćeni, popravljani ili zamijenjeni na trošak proizvođača. Rad u sklopu jamstva ni produkuje jamstveno razdoblje niti započinje novo jamstveno razdoblje. Proizvođač zadržava pravo poništiti bilo kakav jamstveni zahtjev za štete ili nedostatke uslijed zlorabe, zlouporabe ili vanjskog utjecaja (pad, udar, prodor vode, prašine, onečišćenja ili puknuća). Nošenje dijelova (npr. Punjeve baterije) izuzimaju se iz jamstva. Nakon primitka robe RMA, Gembird Europe B.V. zadržava pravo izbora između zamjene neispravne robe ili izdavanja kreditne liste. Iznos kreditne bilješke uvijek će se izračunavati na temelju trenutne tržišne vrijednosti neispravnih proizvoda.

Gembird Europe B.V. Wittevrouwen 56, 1358CD Almere, Nizozemska  
[www.gembird.nl/service](mailto:support@gembird.nl)

**(IT) CONDIZIONI DI GARANZIA**

La ricevuta deve elencare chiaramente la data di acquisto e il numero di parte, inoltre deve essere stampata. Conservare la ricevuta per l'intero periodo di garanzia poiché è necessaria per tutti i reclami in garanzia. Durante il periodo di garanzia gli articoli difettosi verranno accreditati, riparati o sostituiti a spese del produttore. I lavori eseguiti in garanzia non prolungano il periodo di garanzia

né inizio un nuovo periodo de garanzia. Il produttore si riserva il diritto di annullare qualsiasi richiesta di garanzia per danni o difetti dovuti a uso improprio, abuso o impatto esterno (caduta, impatto, ingresso di acqua, polvere, contaminazione o rottura). Le parti soggette ad usura (es. Batterie ricaricabili) sono escluse dalla garanzia. Al ricevimento della merce RMA, Gembird Europe B.V. si riserva il diritto di scegliere tra la sostituzione di merce difettosa o l'emissione di una nota di credito. L'importo della nota di credito sarà sempre calcolato sulla base dell'attuale valore di mercato dei prodotti difettosi.

Gembird Europe B.V. Wittevrouwen 56, 1358CD Almere, Paesi Bassi  
[www.gembird.nl/service](http://www.gembird.nl/service)

**(PT) CONDIÇÕES DE GARANTIA**

O recibo deve listar claramente a data da compra e o número da peça, além de descrever o problema. Guarira o recibo durante todo o período de garantia, pois é necessário para todas as reivindicações de garantia. Durante o periodo de garantia, os itens defeituosos serão creditados, reparados ou substituídos às custas do fabricante. O trabalho realizado sob a garantia não prolonga o período da garantia nem inicia um novo período de garantia. O fabricante reserva-se o direito de anular qualquer reivindicação de garantia por danos ou defeitos devido a uso indevido, abuso ou impacto externo (queda, impacto, entrada de água, poeira, contaminação ou quebra). As peças desgastadas (por exemplo, baterias recarregáveis) estão excluídas da garantia. Após o recebimento das mercadorias RMA, a Gembird Europe B.V. se reserva o direito de escolher entre a substituição de mercadorias defeituosas ou a emissão de uma nota de crédito. O valor da nota de crédito será sempre calculado com base no valor atual de mercado dos produtos defeituosos.

Gembird Europe B.V. Wittevrouwen 56, 1358CD Almere, Países Baixos  
[www.gembird.nl/service](http://www.gembird.nl/service)

**(PL) WARUNKI GWARANCJI**

Potwierdzenie musi wyraźnie zawierać datę zakupu i numer części, a ponadto musi być opisany rodzaj usterki. Zachowaj paragon przez cały okres gwarancji, ponieważ jest on wymagany w przypadku wszystkich roszczeń gwarancyjnych. W okresie gwarancyjnym wadliwe elementy zostaną zapisane, naprawione lub wymienione na koszt producenta. Prace przeprowadzone w ramach gwarancji nie przedłużają okresu gwarancji ani nie rozpoczynają nowego okresu gwarancji. Producent zastrzega sobie prawo do unieważnienia wszelkich roszczeń gwarancyjnych za szkody lub wady spowodowane niewłaściwym użytkowaniem, niewłaściwym użytkowaniem lub oddziaływaniem zewnętrznym (upadek, uderzenie, wnikanie wody, kurz, zanieczyszczenia lub pęknięcia). Części zużywające się (np. Akumulatory) są wyłączone z gwarancji. Po otrzymaniu towarów RMA, Gembird Europe B.V. zastrzega sobie prawo wyboru między wymianą wadliwych towarów lub wystawieniem noty kredytowej. Kwota noty kredytowej będzie zawsze obliczana na podstawie bieżącej wartości rynkowej wadliwych produktów.

Gembird Europe B.V.  
 Wittevrouwen 56, 1358CD Almere, Holandia  
[www.gembird.nl/service](http://www.gembird.nl/service)

**(RO) CONDIȚII DE GARANȚIE**

Chitanța trebuie să enumere clar data achiziției și numărul piesei, în plus, trebuie să fie tipărită. Pastrati chitanța pe întreaga perioadă de garanție, deoarece este necesară pentru toate cererile de garanție. În perioada de garanție, articolele defecte vor fi creditate, reparate sau înlocuite pe cheltuiela producătorului. Lucrările efectuate în cadrul garanției nu prelungesc perioada de garanție și nici nu încep o nouă perioadă de garanție. Producătorul își rezervă dreptul de a anula orice cerere de garanție pentru daune sau defecte cauzate de abuz, abuz sau impact extern (cădere, impact, intrare de apă, praf, contaminare sau rupe). Piesele de uzură (de exemplu, baterii recărcabile) sunt excluse din garanție. La primirea mărfurilor RMA, Gembird Europe B.V. își rezervă dreptul de a alege între înlocuirea mărfurilor defecte sau emiterea unei note de credit. Valoarea notei de credit va fi calculată întotdeauna pe baza valorii curente de piață a produselor defecte.

Gembird Europe B.V. Wittevrouwen 56, 1358CD Almere, Olanda  
[www.gembird.nl/service](http://www.gembird.nl/service)

**(SK) PODMIENKY ZÁRUKY**

Potvrdenie musí jasne uvádzať dátum nákupu a číslo dielu, okrem toho by malo byť vytlačené. Uchovajte účtenku po celý záručný dobu, pretože sa vyžaduje pri všetkých reklamáciách. Počas záručnej doby budú chýbné položky pripísané, opravené alebo vymenené na náklady výrobcu. Práce vykonávané na základe záruky nepredlžujú záručnú lehotu ani nezahŕňajú novú záručnú lehotu. Výrobca si vyhradzuje právo výbort akýkoľvek nárok na záručku za škody alebo chyby spôsobené nesprávnym použitím, zneužitím alebo vonkajším dopadom (pad, náraz, vniknutie vody, prachu, kontaminácie alebo zlom). Opotrebované časti (napr. Nabíjateľné batérie) sú zo záruky vylúčené. Po prevzatí tovaru RMA si spoločnosť Gembird Europe B.V. vyhradzuje právo na výber medzi výmenou vadného tovaru alebo vystavením dobropisu. Suma dobropisu sa vždy vypočíta na základe aktuálnej trhovej hodnoty chýbných produktov.

Gembird Europe B.V. Wittevrouwen 56, 1358CD Almere, Holandsko  
[www.gembird.nl/service](http://www.gembird.nl/service)

**(IS) ÞAGGI GARANCIJEU**

V þremsu máru biti jasnó naveden dátum nákuþa in številka dela, poleg tega pa mora biti natisnjeno. Pódrólo hranite za celóto garancijskó obdobje, saj je potrebno za vse garancijske zahtevke. V garancijskem obdobju bodo okvarjeni artikli na račun proizvajalca nakazani, popravilani ali zamenjani. Dela, opravljena v okviru garancije, niti ne podaljšajo garancijske dobe niti ne začnejo novega garancijskega obdobja. Proizvajalec si pridruþuje pravico, da razveljavi kakršne koli garancijske zahtevke za škodo ali napake zaradi zlorabe, zlorabe ali zunanjih vplivov (pade, trk, vdor vode, prah, onesnaþenost ali zlom). Nosilci delov (npr. Akumulatorske batérie) so izkljueni iz garancije. Po prejemu blaga RMA si podjetje Gembird Europe B.V. pridruþuje pravico izbere med zamenjavo pokvarjenega blaga ali izdajo dobropisa. Znesek dobropisa bo vedno izraþunan na podlagi trenutne trþne vrednosti pokvarjenih izdelkov.

Gembird Europe B.V. Wittevrouwen 56, 1358CD Almere, Nizozemska  
[www.gembird.nl/service](http://www.gembird.nl/service)

**(GR) ΟΡΟΙ ΕΓΓΥΗΣΗΣ**

Η απόδειξη πρέπει να αναφέρει σαφώς την ημερομηνία αγοράς και τον αριθμό ανατομικού, επιπλέον θα πρέπει να επιστηθεί. Διατηρήστε την απόδειξη για ολόκληρη την περίοδο εγγύησης, καθώς απαιτείται για όλες τις αιτήσεις εγγύησης. Κατά τη διάρκεια της περιόδου εγγύησης τα ελαττωματικά είδη θα επιστηθούν, θα επισκευαστούν ή θα αντικατασταθούν με έξοδα του κατασκευαστή. Ο χρόνος που πραγματοποιείται βάσει της εγγύησης υπό την περίοδο εγγύησης, ούτε ξεκινά μια νέα περίοδο εγγύησης, ούτε επεκτείνεται η διάρκεια του δικαιώματός σας να ακυρώσετε οποιαδήποτε αίτηση εγγύησης για ζημία ή έκπτωση. Άλλα κοινά χρήσιμα είδη (π.χ. φορτιστές μπαταριών) είναι εκτός εγγύησης. Με την παραλαβή των προϊόντων RMA, η Gembird Europe B.V. διατηρεί το δικαίωμα να επιλέξει μεταξύ αντικατάστασης ελαττωματικών αγαθών ή έκδοσης πιστωτικού σημειώματος. Το ποσό της πιστωτικής σημείωσης θα υπολογιστεί πάντα με βάση την τρέχουσα αγοράία αξία των ελαττωματικών προϊόντων.

Gembird Europe B.V. Wittevrouwen 56, 1358CD Almere, Ολλανδία  
[www.gembird.nl/service](http://www.gembird.nl/service)