



Quality

Innovation

Reliability

www.allstyle.com
7037 Brittmoore Rd.
Houston, TX 77041



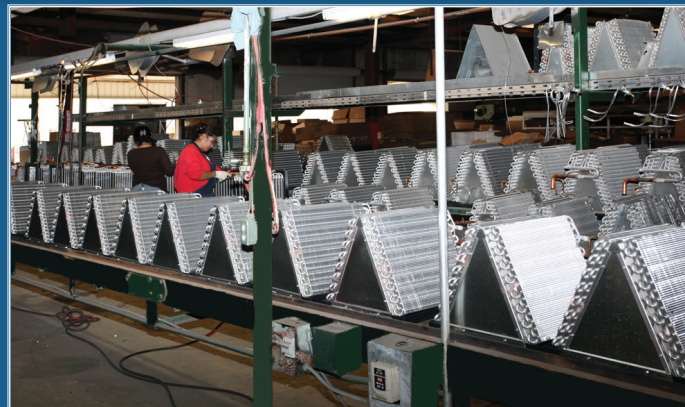
PH: 713.466.6333
FX: 713.466.6363



AllStyle Coil Company, L.P. commenced operations in May of 1990. From the year of 1990 factory operations grew from 40,000 sq. ft. to over 750,000 sq. ft., making AllStyle Coil Company the largest independent coil manufacturer in the United States.

AllStyle is owned and operated in its entirety by Mr. Lendell Martin and his family. Lendell has over 60 years of experience in the air conditioning and refrigeration industry, and holds numerous design patents. Still to this day, Mr. Martin continues working to develop new products.

Being the founder of the **Red-T Coil Company** and having operated an HVAC contracting company, Mr. Martin has a firm understanding of both the customer and contractor. Over the years AllStyle has become the leader in HVAC innovation and the premier independent coil manufacturer in the AHRI Certification Program. With each innovative product AllStyle's production continues to increase. AllStyle continues to build products of quality and durability at a competitive price. Product inventory has increased for both multi-family and residential to include a broad range of air handlers, hydronic units, gas furnaces, and heat pumps.



AllStyle ascendancy has resulted from the establishment of alliances with distributors, prompt delivery of products, outstanding technical assistance, and customer service.

Manufacturing Process

The manufacturing of quality products requires a clear understanding of the market, and its needs. *AllStyle* defines a quality coil as one that meets or exceeds the manufacturers



matched system design specifications. Our products begin with material that meets stringent quality control objectives. *AllStyle* suppliers are selected by their ability to supply quality material as specified, and before shipment all materials must be inspected by the vendor to ensure they meet the necessary specifications.

Quality Coils

AllStyle coils are built to last, and are pressure tested to provide reliability. We use durable copper or aluminum tubing, and corrosion resistant aluminum end plates which are flared instead of punched. Drain pans are made from heavy duty polymer, and are resistant to corrosion and mold growth. A choice of cabinet material is available and double drain ports are standard. *AllStyle* units are rated for both R-22 and R-410a refrigerants, a variety of coils are available to match nearly all air conditioners and heat pumps. At *AllStyle* Coil Company, L.P. we take a personal interest in every product we design, test, and manufacturer. We ensure that your home or office is comfortable, while saving you money in operating costs.



AllStyle products result from a combination of high quality material, efficient manufacturing, and superior personnel. Our fabrication machinery is regularly calibrated according to preset cycle schedules, and in-house training is provided for production personnel regularly. Our products are tested internally to ensure they meet established specifications before being shipped to the customer. The management of AllStyle is involved in the daily supervision of product fabrication, assembly, and testing.

All products are date coded, and are able to be tracked to the wholesale distributors. In the event a product failure is identified, the units are immediately returned to the factory for re-analysis. Any testing failures are traced directly back to their original source, and production adjustments are made, at which time a safe guard is put in place to prevent future problems. AllStyle recognizes how crucial the contribution of each individual employee is when it comes to successfully implementing and realizing its commitment to provide a quality product. Production personnel are trained to properly fabricate and assemble the components from start to finish. Each product goes through a stringent inspection process to ensure the highest quality component is being provided to each customer.



Proudly Made in **U.S.A.**



Long Term Goals

AllStyle will continue to provide innovative products to fit the needs of the current and future market. Factory expansion to support increased growth is underway with future innovations being considered.

AllStyle is a privately held corporation and invests in the future to improve the manufacturing, testing, design, and development process. This ensures superior products reach the market in a timely fashion. Looking into the future, Mr. Martin is excited to pass along his ideas and work ethic to the next generation of his family, ensuring the company's success for many years to come.

AllStyle Coil Company, L.P. looks forward to many continued years of growth and success because of the solid foundation upon which the company has been built on.



AllStyle Coil



Company, L.P.



Table of Contents

Evaporator Coils

• Un - Cased Vertical Coils	
ASUC ("A" & "M" Coil)	1-2
• Up - Flow Cased Coils	
AS	3-4
• Horizontal Slab Coils	
ASH, ASHL	5-6
• Horizontal Plenum Coils	
AS** (ASLT, ASLB, ASLL, ASFM, ASFL, ASKM, ASKL).	7-8
• StyleQuest Multi - Position Coils	
New ASQN	9-10

Air Handlers

• Single or Multi-Family Air Handlers - Ceiling Mounted	
ABF*, ABK*, ABSK*, ABTK*, ABTF*, ABTSK*	11-12
• Single or Multi-Family Air Handlers - Double Blower Mounted	
HFD, HFP*, HFC*	13-14
• Single or Multi-Family Air Handlers - Wall Mounted	
VL, VLD, VLL, VLDW	15-18
• Single or Multi-Family Air Handlers - Multi-Position	
SL, SLT, SLTCW, SLTW, BLN, BLNT, BLNW, BLNTW.	19-20
• Single or Multi-Family Air Handlers - Multi-Position Modular	
ELB, EFM, WLB, WFM (Hydronic)	21-22

Mobile Home Products

• Down - Flow Mobile Home Modular Air Handler and Coil	
ADFM (Air Handler), ANDF (Coil)	23-24
• Un - Cased Mobile Home Coils	
ASUM	25-26
• AllStyle Mobile Home & Commercial Piggyback Package	
AMCP	27-28

Commercial Coils

• Up-Flow Single Circuit and Commercial Air Handlers	
ABM, ABAH	29-30
• Dual Circuit	
ABH	31-32

Condensers

• 14+ Seer R-410A Air Conditioners	
BAC*	33-34
• AllStyle Twin Condensing Units	
ABTC96, ABTC120	35-36

Evaporator Coils

AllStyle has a variety of evaporator coils to rival any manufacturer. Each coil is carefully engineered and crafted to complement all OEM condensing units.



"A" Coil

Features:

- Pitched polymer drain pan
- Left Hand Refrigerant and drain connections
- Field installed TXV
- Coil elevated from condensate
- Long Life Aluminum or Copper tube
- Aluminum fins and end plates
- Pressure tested to 500 PSI
- Quick-Connect fittings are optional
 ** Add "QC" to Model number
- 3/8" Liquid Line connection
- Suction Line Connections
 3/4" on 1.5 to 3.0 Tons
 7/8" on 3.5 to 5.0 Tons

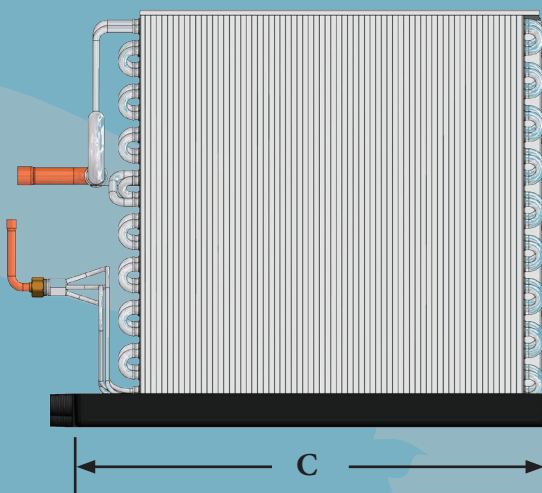
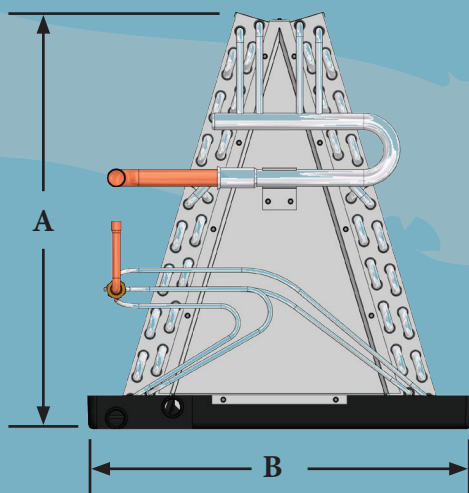
Counterflow (DOWN-FLOW) Models

Air seals must be placed on the inside of the evaporator's drain pan to prevent water blow off in several counterflow model installations.

Our Splash Guard kit is available from the local distributor. The kit contains four air seals, enough to complete two counterflow installations.

All supply ducts must be ducted below the drain pan. The drain connection should be kept 4" to 6" above the floor line to allow for rotation of a pipe fitting and for pitch of a drain line to a floor drain. It is not recommended that any coils be used in a counterflow model if the system is located directly over objects which could be damaged by condensate, such as in an installation on a second floor over a finished ceiling. If such a location is unavoidable, it is suggested that a water tight, galvanized auxiliary pan at least 2" deep and at least 2" larger in all directions than the supply plenum, be installed beneath the supply plenum. A separate drain line from the auxiliary pan to an open drain should be provided. This open drain should be visible so that any water coming from the auxiliary drain can be seen as an indicator that the primary drain is plugged.

5 - Year LIMITED Warranty Against Coil Leakage
5 - Year LIMITED Warranty Against Drain Pan Breakage
1 - Year LIMITED Parts Warranty



Standard "A" Un-Cased Heights

"A" Coil	Un-Cased Height	Designated Width Code
ASUCXX - A246G	14.50"	5 - 6
ASUCXX - A266G	16.50"	5 - 6
ASUCXX - A286G	18.50"	6 - 7
ASUCXX - A206G	20.50"	7 - 8
ASUCXX - A2Y6G	22.50"	7
ASUCXX - A2Z6G	24.50"	7
ASUCXX - A364G	16.50"	7
ASUCXX - A384G	18.50"	7 - 8
ASUCXX - A304G	20.50"	8
ASUCXX - A3Q6G	28.50"	8
ASUCXX - A3S6G	26.50"	8
ASUCXX - A3Y4G	22.50"	8 - 8A - 9
ASUCXX - A3Z4G	24.50"	8 - 8A - 9
ASUCXX - A400G	20.50"	8 - 8A - 9
ASUCXX - A4Q0G	28.50"	8 - 8A - 9
ASUCXX - A4S0G	26.50"	8 - 8A - 9
ASUCXX - A4Y0G	22.50"	8 - 8A - 9
ASUCXX - A4Z0G	24.50"	8 - 8A - 9

- Evaporator height determined by Model number and application
- Contact distributor for detailed specifications
- Specifications may change without notice

Un-Cased "A" Coil Dimensions

Width Code	Un-Cased Width B	Un-Cased Depth C
5	13.00"	19.50"
6	15.00"	19.50"
7	17.00"	19.50"
8	20.00"	19.50"
8A	24.00"	19.50"
9	24.00"	19.50"



Up-Flow "M" Coil Patent Product

Standard "M" Un-Cased Heights

"M" Coil	Un-Cased Height	Designated Width Code
ASUCXX - M226G	12.50"	6A - 7 - 8 - 8A - 9
ASUCXX - M246G	14.50"	6A - 7 - 8 - 8A - 9
ASUCXX - M266G	16.50"	7 - 8 - 8A - 9
ASUCXX - M286G	18.50"	7 - 8 - 8A - 9
ASUCXX - M206G	20.50"	8 - 8A - 9
ASUCXX - M2Y6G	22.50"	8 - 8A - 9
ASUCXX - M2Z6G	24.50"	8 - 8A - 9
ASUCXX - M2S6G	26.50"	8 - 8A - 9

Un-Cased "M" Coil Dimensions

Width Code	Un-Cased Width B	Un-Cased Depth C
6A	17.00"	19.50"
7	17.00"	19.50"
8	20.00"	19.50"
8A	24.00"	19.50"
9	24.00"	19.50"

Evaporator Coils

Cased Coils

Features:

- Embossed, galvanized steel case
- Long Life Aluminum or Copper tubing
- Corrosion resistant Aluminum end plates and fins
- Pressure tested to 500 PSI
- Standard polymer drain pan
- Pitched drain pan with lower Heat Shield
- Insulated cabinet with reduced fiberglass exposure
- Indented cabinet panels
- Easy opening front access panel
- Metering device accessible from cabinet exterior



Cased Up-Flow with Painted Cabinet
Patent Product

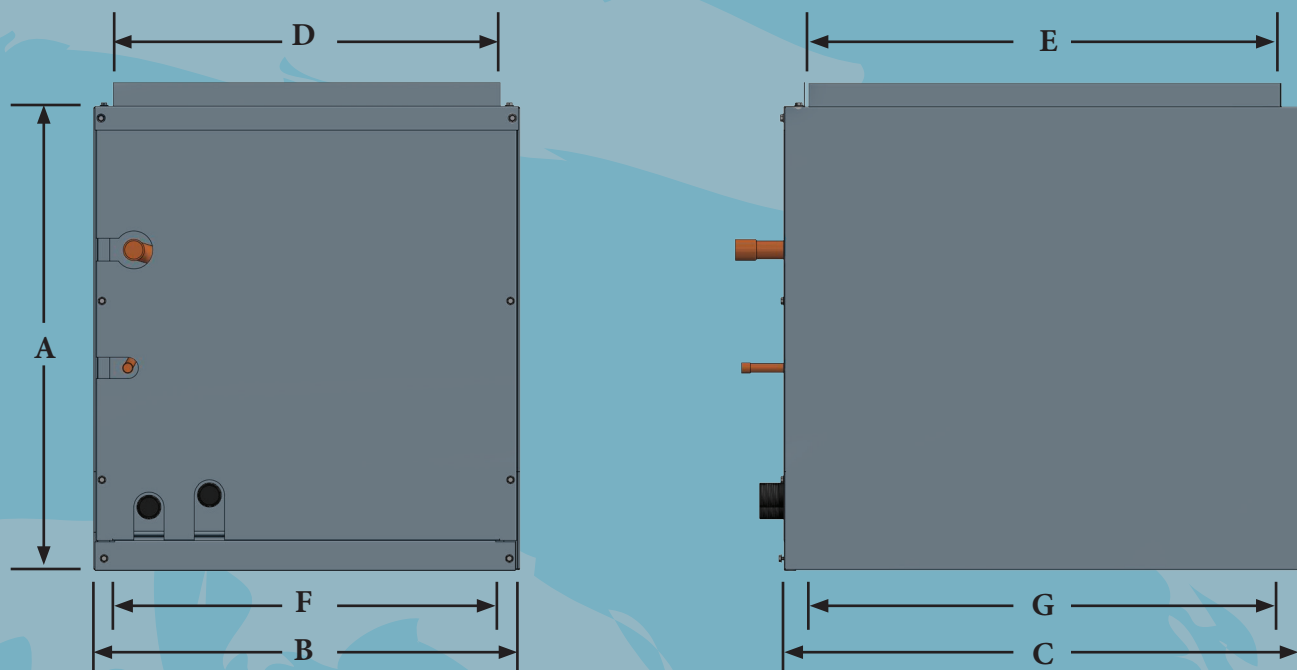
Optional Features:

- Painted Case in Executive Grey
- Left/ Right Hand or Dual Port Drain Connections
- Left/ Right Hand Refrigerant Connections
- A Choice of Thermal Expansion Valves
- Heat Pump Compatible
- 19 Different Cabinet Sizes

Evaporator cased coils have a variety of cabinet width sizes to fit OEM furnace manufacturers for up-flow or draw-through applications.

Superior quality and efficiency

5 - Year LIMITED Warranty Against Coil Leakage
5 - Year LIMITED Warranty Against Drain Pan Breakage
5 - Year LIMITED Parts Warranty



"AS" Cabinet Dimensions

Cabinet Code	Cabinet Height - A	Cabinet Width - B	Cabinet Depth - C	Air Outlet Width - D	Air Outlet Depth - E	Air Inlet Width - F	Air Inlet Depth - G
5	***	14.00"	21.50"	12.75"	19.75"	13.00"	20.25"
5G	***	14.25"	21.50"	12.25"	19.75"	12.75"	20.25"
6	***	16.50"	21.50"	14.75"	19.75"	15.25"	20.25"
6S	***	17.25"	21.50"	15.50"	19.75"	16.00"	20.25"
6A	***	18.00"	21.50"	16.25"	19.75"	16.75"	20.25"
6H	***	15.50"	21.50"	13.75"	19.75"	14.50"	20.25"
6G	***	17.50"	21.50"	15.75"	19.75"	16.25"	20.25"
6R	***	17.50"	21.50"	15.75"	19.75"	16.25"	20.25"
7	***	18.50"	21.50"	16.75"	19.75"	17.25"	20.25"
7H	***	19.13"	21.50"	17.38"	19.75"	18.13"	20.25"
8S	***	20.50"	22.25"	18.75"	19.75"	19.25"	20.25"
8	***	21.25"	22.25"	19.50"	19.75"	20.25"	20.25"
8A	***	24.50"	22.25"	22.75"	19.75"	23.50"	20.25"
8G	***	21.00"	22.25"	19.25"	19.75"	20.00"	20.25"
8H	***	22.75"	22.25"	21.00"	19.75"	21.75"	20.25"
8Y	***	22.25"	22.25"	20.50"	19.75"	20.00"	20.25"
9	***	25.50"	22.25"	23.75"	19.75"	24.25"	20.25"
9G	***	24.50"	22.25"	22.75"	19.75"	23.50"	20.25"

- *** - Coil height determined by Evaporator Model and application
- Contact distributor for detailed specifications

Evaporator Coils

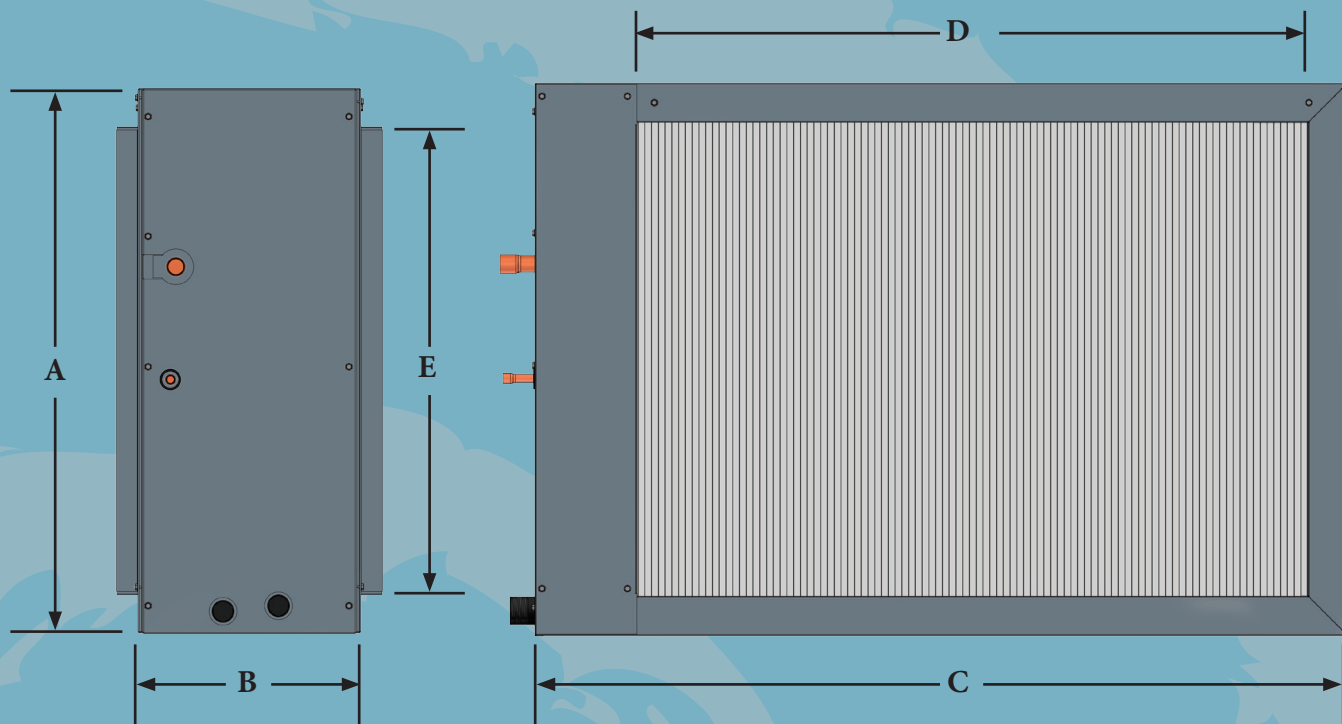
Horizontal Slab Coils

Features:

- Insulated embossed, galvanized steel case
- Long Life Aluminum or Copper tubing
- Corrosion resistant aluminum fins and end plates
- Pressure tested to 500 PSI
- Polymer drain pan
- 3/4" MPT Drain Connections
- 3/8" Liquid Line
- Suction Line Connections
 - 3/4" on 1.5 to 3.0 Tons
 - 7/8" on 3.5 to 5.0 Tons
- Optional Factory installed Thermal Expansion Valve
- Dual rated for R-22 and R-410a
- 5 - Year Functional Parts Warranty



Coil length sizes varies on cabinets.
Contact distributor to provide you with the proper coil length for your size restrictions.



"ASH" Cabinet Dimensions						
Cabinet Code	Coil Selection	Cabinet Height - A	Cabinet Width - B	Cabinet Length - C	Plenum Length - D	Plenum Height - E
5	ASHXX - 17XXT - 5	24.50"	10.00"	23.00"	16.00"	21.00"
5B	ASHXX - 20XXT - 5B	24.50"	10.00"	25.00"	16.00"	21.00"
6	ASHXX - 24XXT - 6	24.50"	10.00"	31.00"	24.00"	21.00"
6B	ASHXX - 28XXT - 6B	24.50"	10.00"	33.00"	24.00"	21.00"
7	ASHXX - 30XXT - 7	24.50"	10.00"	36.00"	30.00"	21.00"
7B	ASHXX - 34XXT - 7B	24.50"	10.00"	38.50"	34.00"	21.00"

"ASHL" Cabinet Dimensions						
Coil Model	Nominal Tonnage	Cabinet Height - A	Cabinet Width - B	Cabinet Length - C	Plenum Length - D	Plenum Height - E
ASHL24 - 2626T	2.0	20.50"	10.00"	31.00"	20.00" - 22.00"	17.00"
ASHL36 - 2634T	3.0	20.50"	10.00"	31.00"	20.00" - 22.00"	17.00"
ASHL48 - 3034T	4.0	20.50"	10.00"	33.00"	20.00" - 22.00"	17.00"
ASHL60 - 3042T	5.0	20.50"	10.00"	33.00"	28.00"	17.00"

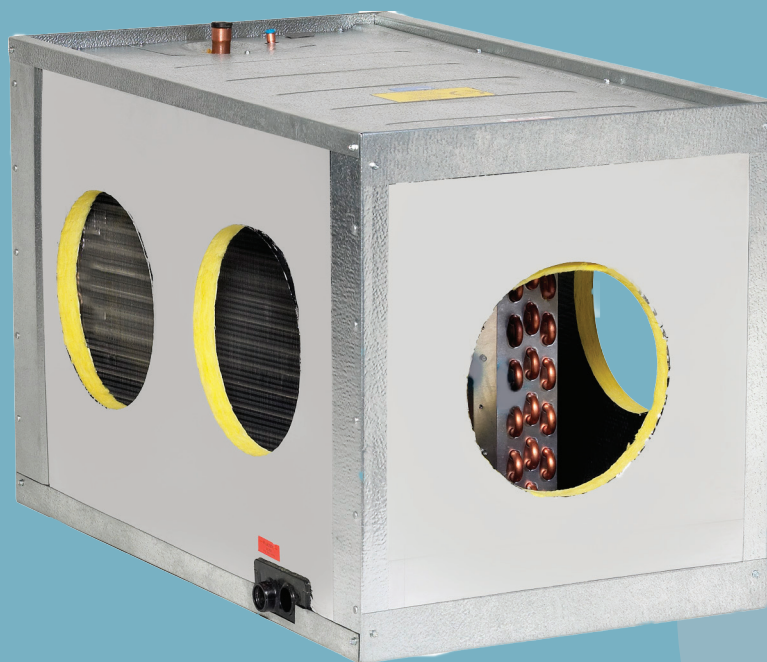
Evaporator Coils

Horizontal Plenum Coils

Features:

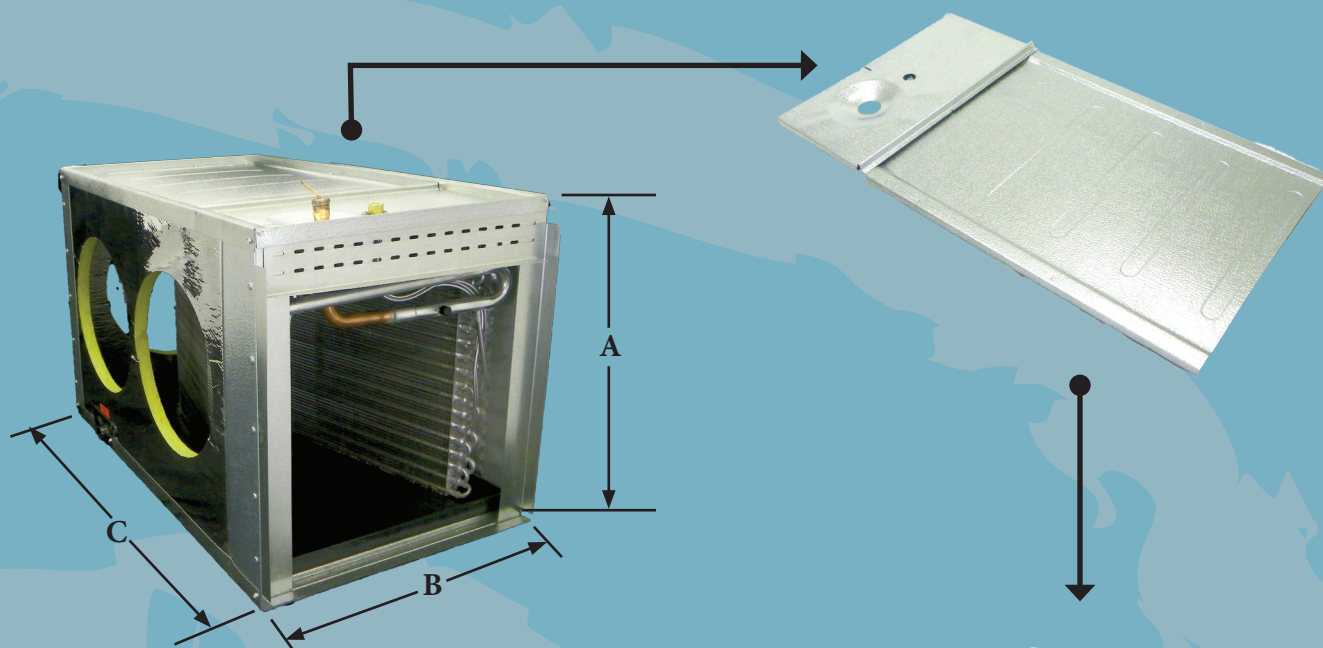
- Cleanable, mold-resistant interior surface
- Fiberglass removed from the air stream
- Pitched, polymer drain pan elevates coil from the condensate
- Top Left and Right Refrigerant drain connections
- Superior air flow compared to other Horizontal coils
- Easily removable top panel with locking air seal and K.O. for UV light

Plenum Coil with cut - outs
Patent Product

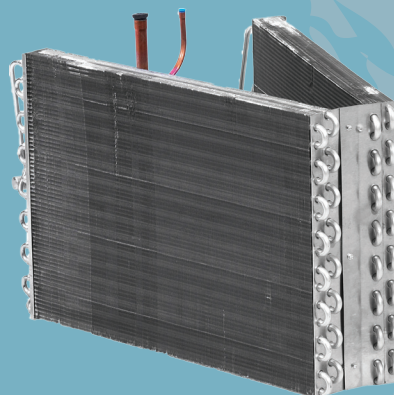


*Plenum Duct holes are cut by contractors
per building specifications*

- Factory installed Thermal Expansion Valve
- Rated for R-22 and R-410a
- Long Life Aluminum or Copper Tube option
- Enhanced Aluminum Fins
- Heavy, Aluminum end plates vs. galvanized steel
- Pressure tested to 500 PSI
- Plenum coil combines an adjustable inlet adapter, cooling coil, and supply plenum into one easy install
- Fits furnace 17" to 23" wide (Adjustments plates included)

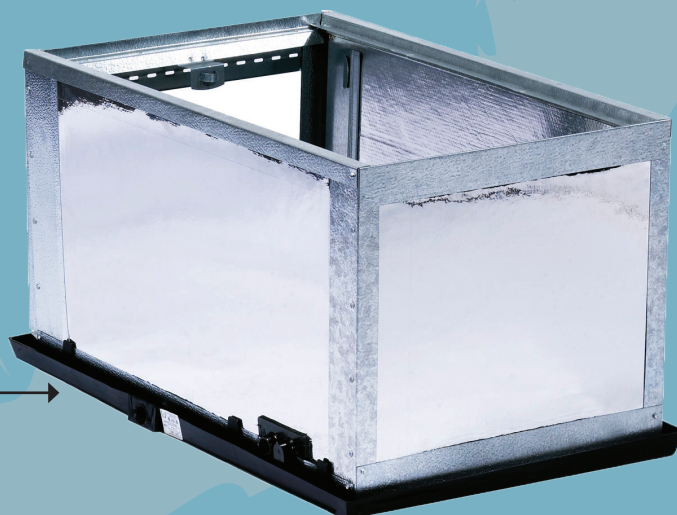


Model	Cabinet Height - A	Cabinet Width - B	Cabinet Length - C	Return Height	Return Width
ASLT	18.25"	20.25"	26.25"	13.00" x 18.00"	16.00" x 20.25"
ASLB	18.25"	20.25"	34.375"	13.00" x 18.00"	16.00" x 20.25"
ASLL	18.25"	20.25"	40.375"	13.00" x 18.00"	16.00" x 20.25"
ASFM	22.25"	20.25"	34.375"	17.00" x 21.00"	16.00" x 20.25"
ASFL	22.25"	20.25"	40.375"	17.00" x 21.00"	16.00" x 20.25"
ASKM	26.25"	20.25"	34.375"	21.00" x 23.00"	16.00" x 20.25"
ASKL	26.25"	20.25"	40.375"	21.00" x 23.00"	16.00" x 20.25"



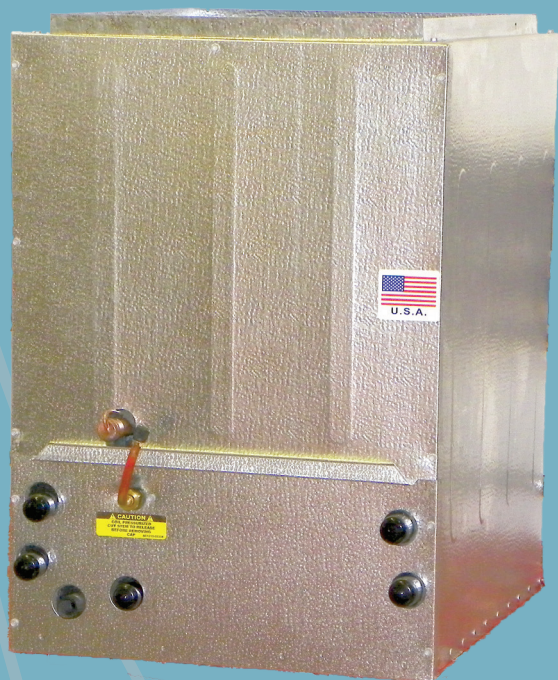
Plenum Coils feature convenient modular construction to facilitate installation & maintenance

Auxiliary Safety Pan



Evaporator Coils

New StyleQuest Multi-Position Coils



New StyleQuest Multi-Position Coil
The AllSty Patent Product
is the Only Coil that is Multi-Position
Left, Right, or Up-Flow

Installation Instructions

The StyleQuest coil is a Multi-Position Coil for Up-Flow or Horizontal use. The coil is designed for either horizontal right or horizontal left application, but not for both. Air should enter the base of the coil and not the apex.

The coil must be installed in a level position.

**IT IS NOT RECOMMENDED THAT AIR ENTER THE
APEX END OF THE COIL**

A red arrow on the coil indicates correct air flow direction for horizontal installation.

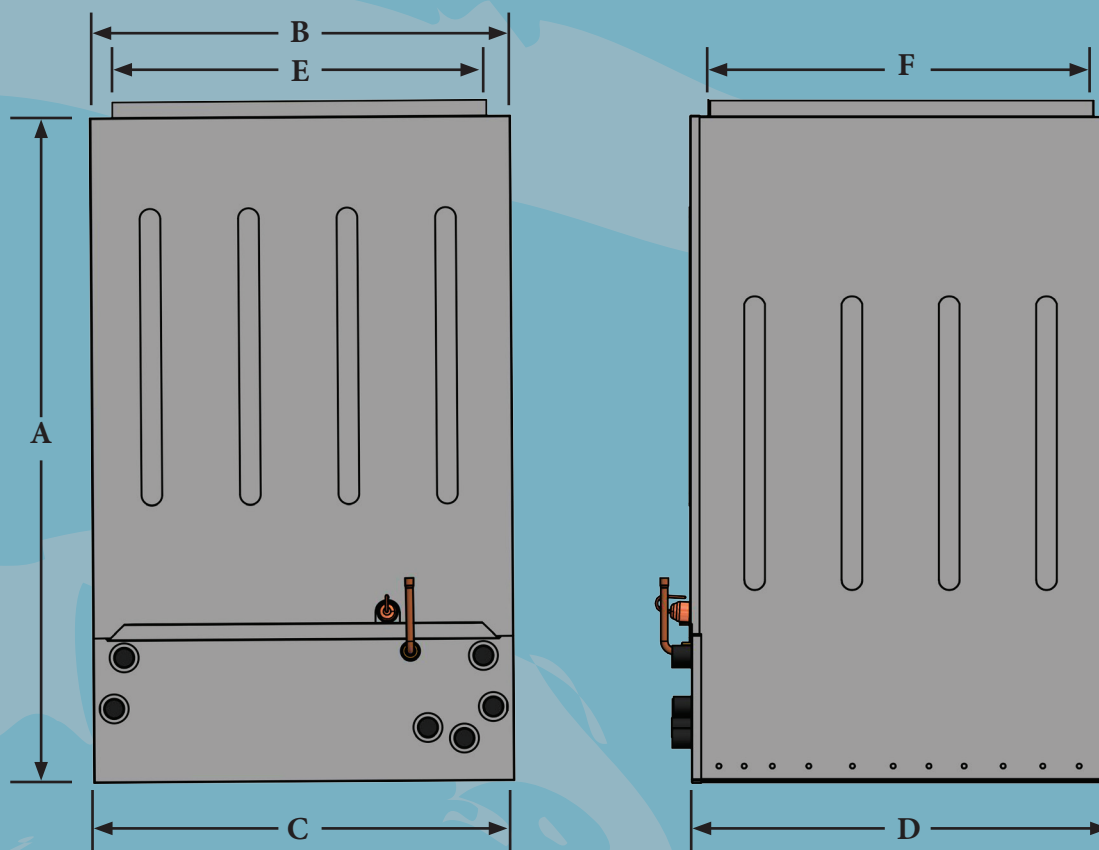
Features:

- Multi-Position - Up-Flow, Horizontal Right or Horizontal Left
Order the desired configuration
- Fully insulated embossed, galvanized cabinet
- Polymer drain pans (Horizontal Left, Right, and Vertical)
- Dual drain connections on each drain pan
- Long Life Aluminum or Copper tube option
- Aluminum fins and end plates
- Orifice Refrigerant Metering, Standard

Optional Features:

- Thermal Expansion Valves
- Powder painted cabinet
- Heat Pump application



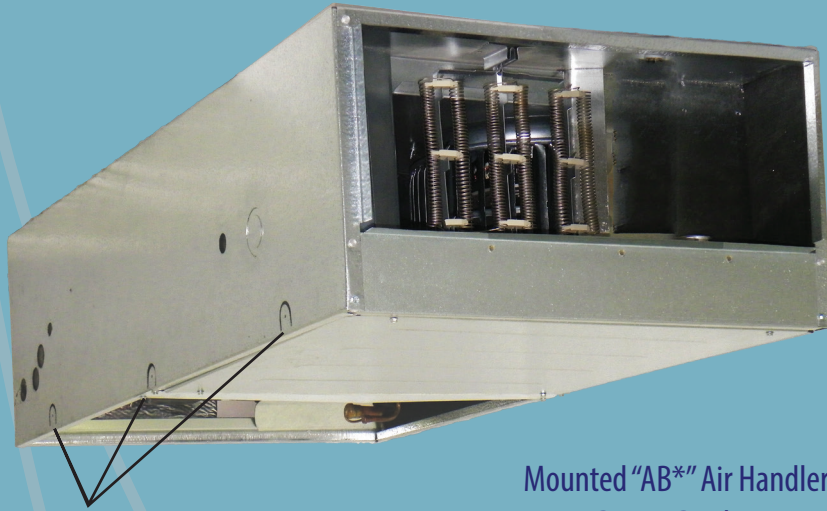


Cabinet Code	Cabinet Height - A				Door Width B	Cabinet Width C	Cabinet Depth D	Opening Width E	Opening Depth F	Drain Conn. MPT	Liquid Line Conn.	Suction Line Conn.
	Coils 14" - 16"	Coils 18" - 20"	Coils 22" - 24"	Coils 26 - 30"								
ASQN - 5	21.25"	25.25"	---	---	14.50"	14.00"	21.50"	13.25"	20.25"	3/4"	3/8"	3/4" - 7/8"
ASQN - 5G	21.25"	25.25"	---	---	14.75"	14.25"	21.50"	12.25"	20.25"	3/4"	3/8"	3/4" - 7/8"
ASQN - 6	21.25"	25.25"	---	---	17.00"	16.50"	21.50"	15.25"	20.25"	3/4"	3/8"	3/4" - 7/8"
ASQN - 6G	21.25"	25.25"	---	---	18.00"	17.50"	21.50"	15.75"	20.25"	3/4"	3/8"	3/4" - 7/8"
ASQN - 6A	21.25"	25.25"	---	---	18.25"	17.75"	21.50"	16.50"	20.25"	3/4"	3/8"	3/4" - 7/8"
ASQN - 6R	21.25"	25.25"	---	---	18.00"	17.50"	21.50"	16.25"	20.25"	3/4"	3/8"	3/4" - 7/8"
ASQN - 8	21.25"	25.25"	28.75"	34.75"	21.75"	21.25"	21.50"	20.00"	20.25"	3/4"	3/8"	3/4" - 7/8"
ASQN - 8G	21.25"	25.25"	28.75"	34.75"	21.50"	21.00"	21.50"	19.25"	20.25"	3/4"	3/8"	3/4" - 7/8"
ASQN - 8Y	21.25"	25.25"	28.75"	34.75"	22.75"	22.25"	21.50"	21.00"	20.25"	3/4"	3/8"	3/4" - 7/8"
ASQN - 8A	21.25"	25.25"	28.75"	34.75"	25.25"	24.75"	21.50"	23.50"	20.25"	3/4"	3/8"	3/4" - 7/8"
ASQN - 9G	21.25"	25.25"	28.75"	34.75"	25.25"	24.50"	21.50"	22.75"	20.25"	3/4"	3/8"	3/4" - 7/8"

- Specify **StyleQuest** Cabinet When Ordering
- Specify **Right** or **Left** Drain Pan and Refrigerant
- *5 & 5G Cabinet accommodates (1) Horizontal drain pan Only (RH or LH)
- **6 - 9G Cabinet accommodates (2) Horizontal drain pans, if desired
- ***For a **Single** Drain Pan, Place a "**Q1**" before the Cabinet Code
- ***For **Two** Drain Pans, Place a "**QII**" before the Cabinet Code
- Specifications May Change Without Notice

Single or Multi-Family Air Handlers

Ceiling Mounted Air Handlers



Pre-Punched Mounting Tabs

Mounted "AB*" Air Handlers
Patent Product

Features:

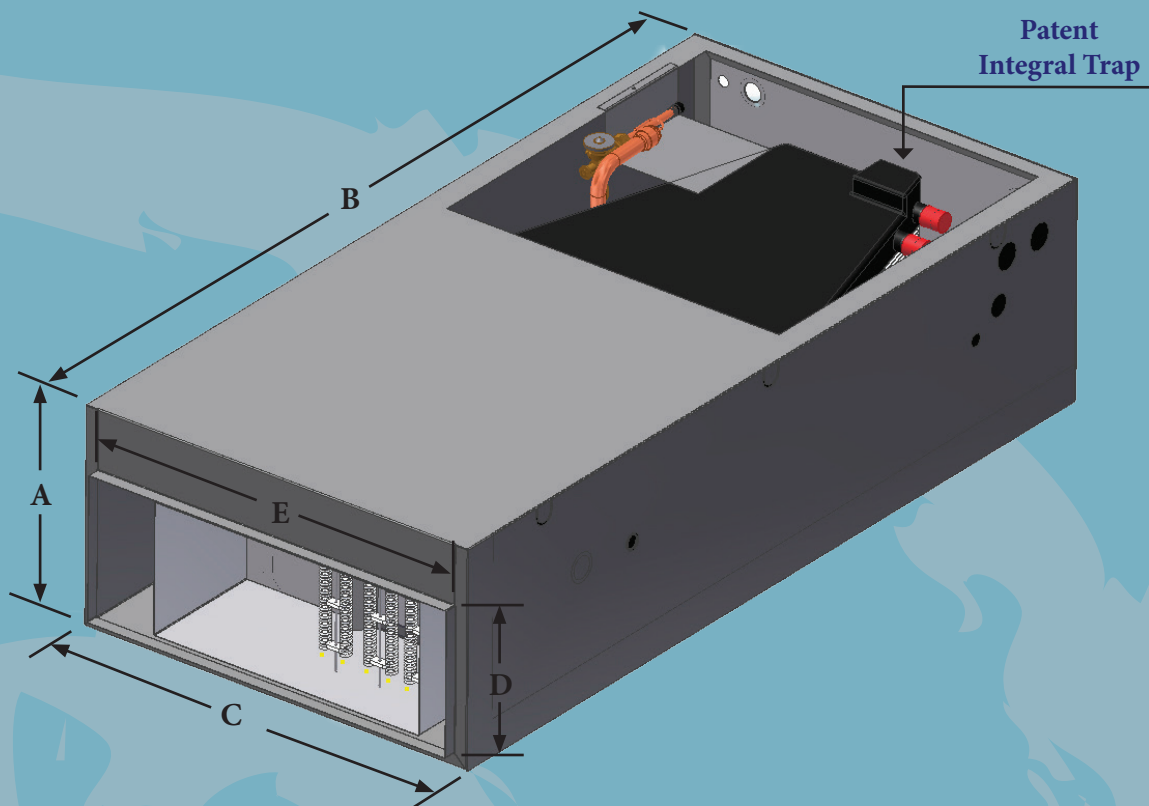
- Designed for installation in a furred down or dropped ceiling area
- Cooling Only, Cooling and Electric Heating, or Heat Pump with Electric back up
- Optional factory installed Electric Heat of either 3, 5, 6, 8, or 10 kW
- Cooling Capacities 1.5 - 3.5 Nominal Tons
- Orifice Refrigerant metering is standard with Thermal Expansion Valves optional

- Polymer drain pan
- Standard built-in Internal Filter Rack in Louvered Panel Only
- Pre-punched side mounting tabs for easier installations
- Long Life Aluminum or Copper tube
- Aluminum fins and end plates
- Powder coated, hinged access panels must be ordered separately
- Fully insulated embossed, galvanized steel cabinets
- Coil Cover for Return End Supply (Ordered Separately)



Various options available

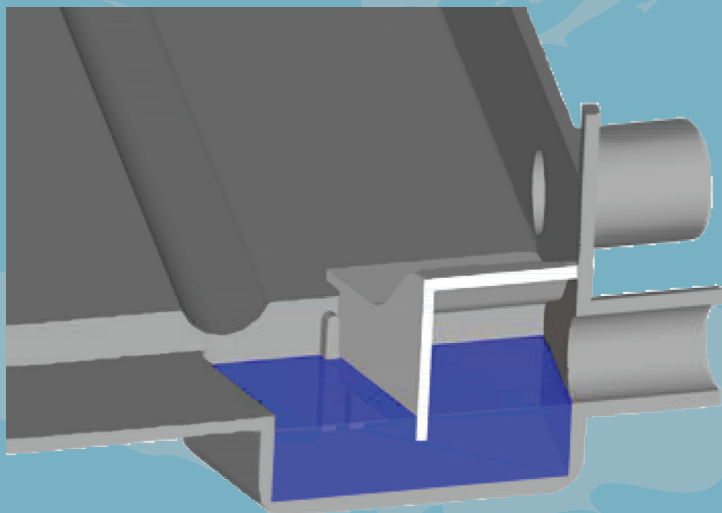
Access Panel Dimensional Data					
Model Panel	Used on Air Handler Models	Description	Frame O.D. Dimension	Opening Dimension	Access Panel Dimensions
ACP-51S	ABF 18-30	Solid Panel	29.25"W x 53.25" L	23.25"W x 47.25" L	27.25"W x 51.25" L
ACP-51L**	ABF 18-30	Louvered Panel	29.25"W x 53.25" L	23.25"W x 47.25" L	27.25"W x 51.25" L
ACP-55S	ABK 30-36	Solid Panel	29.25"W x 57.25" L	23.25"W x 51.25" L	27.25"W x 55.25" L
ACP-55L**	ABK 30-36	Louvered Panel	29.25"W x 57.25" L	23.25"W x 51.25" L	27.25"W x 55.25" L
ACP-61S	ABSK 18-36	Solid Panel	29.25"W x 63.25" L	23.25"W x 55.25" L	27.25"W x 61.25" L
ACP-61L	ABSK 18-36	Louvered Panel	29.25"W x 63.25" L	23.25"W x 55.25" L	27.25"W x 61.25" L



Cabinet Dimensions									
Model	Cabinet Height - A	Cabinet Length - B	Cabinet Width - C	Plenum Height - D	Plenum Width - E	Optional Return Opening	Access Grille Width	Access Grille Length	Filter Size
ABF* 18 - 30	12.00"	47.00"	22.50"	8.00"	21.50"	21.00" x 8.00"	27.25"	51.25"	20.00" x 20.00"
ABK(L,R)* 18 - 30	12.00"	51.00"	22.50"	8.00"	21.50"	21.00" x 8.00"	27.25"	51.25"	20.00" x 20.00"
ABSK* 18 - 36	12.00"	57.00"	22.50"	8.00"	22.50"	21.00" x 8.00"	27.25"	61.25"	20.00" x 25.00"

- Specifications may change without notice

Cabinet Dimensions									
Model	Cabinet Height - A	Cabinet Length - B	Cabinet Width - C	Plenum Height - D	Plenum Width - E	Optional Return Opening	Access Grille Width	Access Grille Length	Filter Size
ABTF* 18 - 36	16.00"	47.00"	22.50"	12.00"	21.50"	21.00" x 12.00"	27.25"	51.25"	20.00" x 20.00"
ABTK* 18 - 36	16.00"	51.00"	22.50"	12.00"	21.50"	21.00" x 12.00"	27.25"	55.25"	20.00" x 20.00"
ABTSK* 18 - 42	16.00"	57.00"	22.50"	12.00"	22.50"	21.00" x 12.00"	27.25"	61.25"	20.00" x 25.00"



New Integral Drain Trap

The AB*/ABT* Series furred down air handlers are now standard with our integral drain trap. This unique design eliminates the need for exterior condensate traps in the primary drain line. No more hassles trying to find room above a dropped ceiling for a condensate trap. This feature will save you time and money!

Single or Multi-Family Air Handlers

Double Blower Ceiling Mounted Air Handlers



Features:

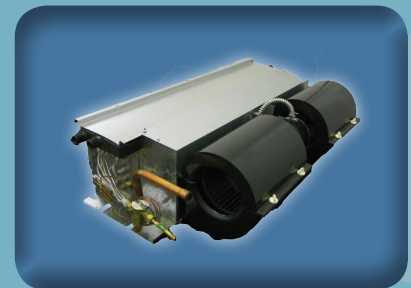
- Designed for concealed installation in furred down ceilings
- Applications in A/C and Heat Pump
- Requires a Sealed Return Air Space
- Optional Long Life Aluminum or Copper
- Unique polymer blower scroll separates for easy blower wheel and motor removal
- Corrosion resistant polymer drain pan
- DX Coil, Electric Heat, motor, blower wheel, and polymer drain pan are all serviceable from the bottom
- Rugged, durable, and easy to service

Optional Features:

- White, powder coated, solid or louvered hinged access panels with mounting screws
- Insulated housing, factory or field installed, allows for ducted return air plenum
- A/C or heat pump TXV in R-22 or R-410a, factory or field installed

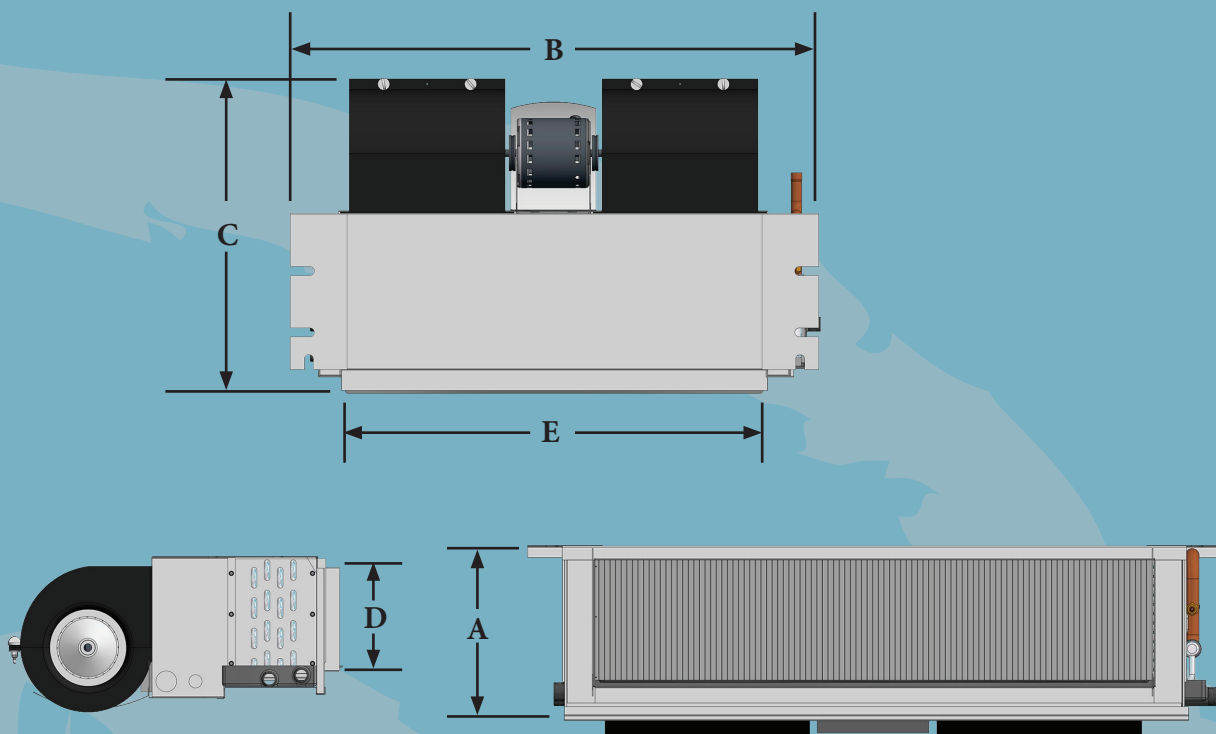


Easy access to service lines

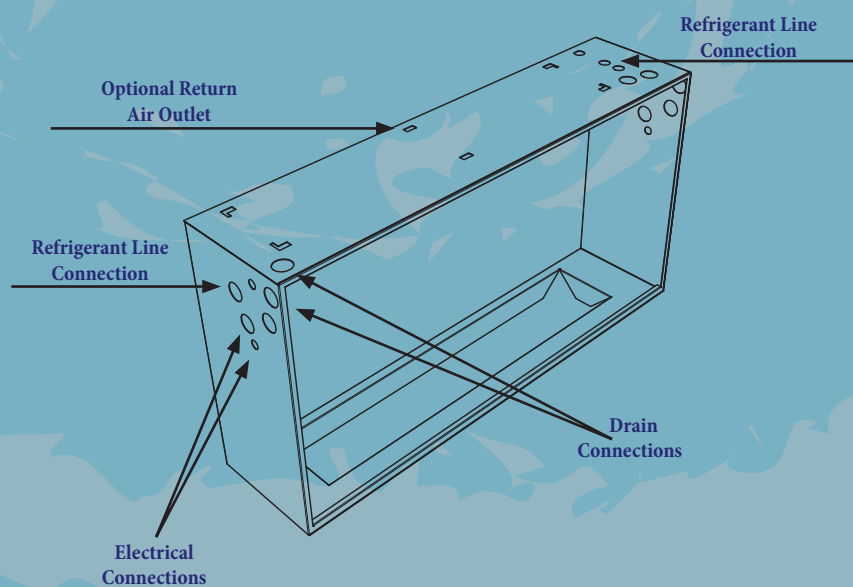


Blower Housing is easily removable for blower motor access.

Ceiling Panel/Enclosure Information											
Coil	Housing No.	Housing Dimensions			For Model	Panel No.	Description	Ceiling Panel Opening		Panel Frame Dims. (Outside)	
		H	W	D							
30" Coil	PL-3975	11"	39 3/4"	24"	HF* 12, 18, 24, 30	PL-3975	LOUVERED	24 1/2"	40"	28"	43 3/4"
						PS-3975	NON-LOUVERED	24 1/2"	40"	28"	43 3/4"
36" Coil	PL-4575	11"	45 3/4"	24"	HF* 36	PL-4575	LOUVERED	24 1/2"	46"	28"	49 3/4"
						PS-4575	NON-LOUVERED	24 1/2"	46"	28"	49 3/4"
42" Coil	PL-5175	11"	51 3/4"	24"	HF* 37	PL-5175	LOUVERED	24 1/2"	52"	28"	55 3/4"
						PS-5175	NON-LOUVERED	24 1/2"	52"	28"	55 3/4"



Cabinet Dimensions					
MODEL	Cabinet Height - A	Cabinet Width - B	Cabinet Depth - C	Plenum Height - D	Plenum Width - E
HFD/HFP 18 - 24	10.00"	37.25"	20.50"	7.00"	30.00"
HFD/HFP 18 - 30	10.00"	43.25"	20.50"	7.00"	36.00"
HFD/HFP 18 - 36	10.00"	49.25"	20.50"	7.00"	42.00"



KNOCKOUT FOR DUCTED RETURN

Requires filter grille (field supplied)
Ducted return requires non-louvered panel

Single or Multi-Family Air Handlers

Wall Mounted Air Handlers

Features:

- Vertical Up-Flow application (See VL* Applications on Pg 17 -18)
- Front Return Air or Bottom Return
- Fully insulated cabinet
- Tabs for stud or wall mounting are stamped into cabinet exterior
- Long Life Aluminum or Copper DX Coils
- Aluminum fins and end plates
- 1.0 to 3.0 Tons Cooling Capacity
- 3/4" MPT Primary and Secondary drains
- 3/ 8" Liquid Refrigerant Line
- 3/ 4" Suction Refrigerant Line
- 208/ 230 VAC operation
- Polymer drain pan

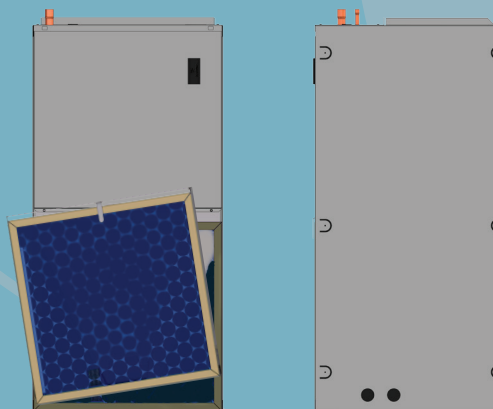


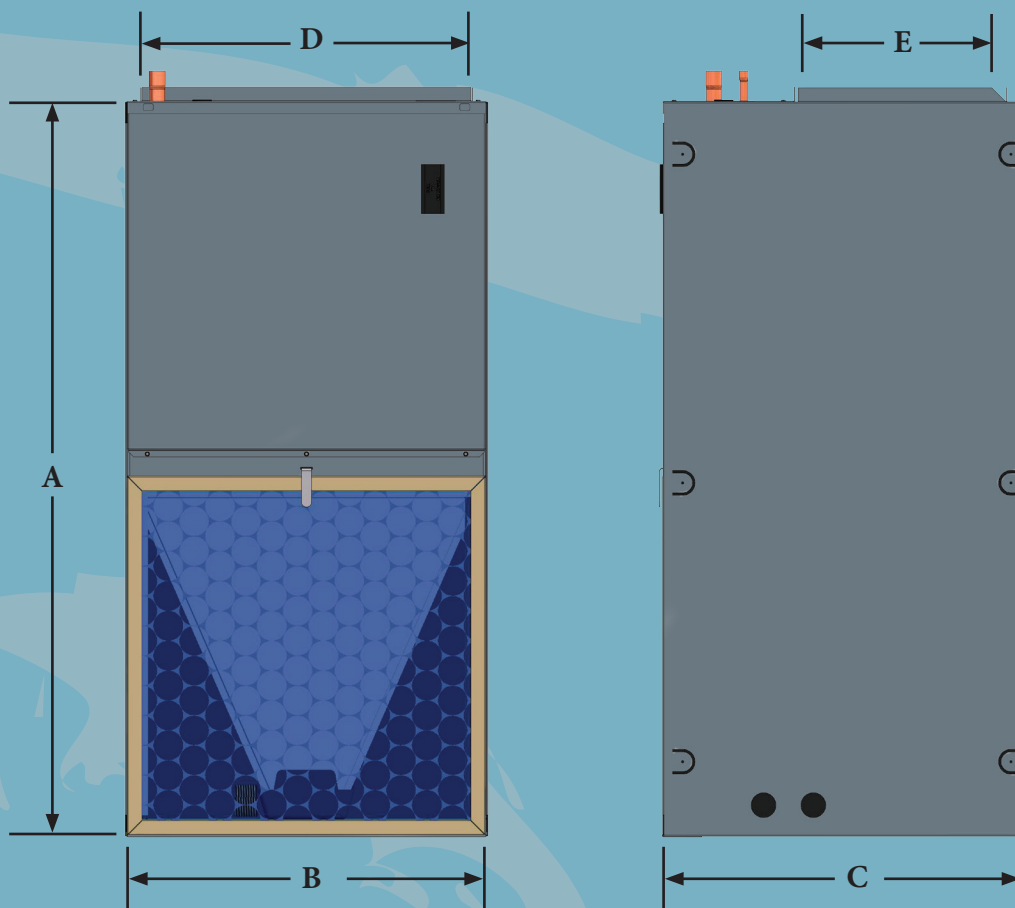
Optional Features:

- Factory or field install Heat Pump TXV and Check Valve
- Solid, Lower Coil panel for Bottom Return
- Front Return Grilles
- Factory installed Electric Heat, Disconnect, and Float Switch
- *Freeze - Stat or Enter Water T - Stat



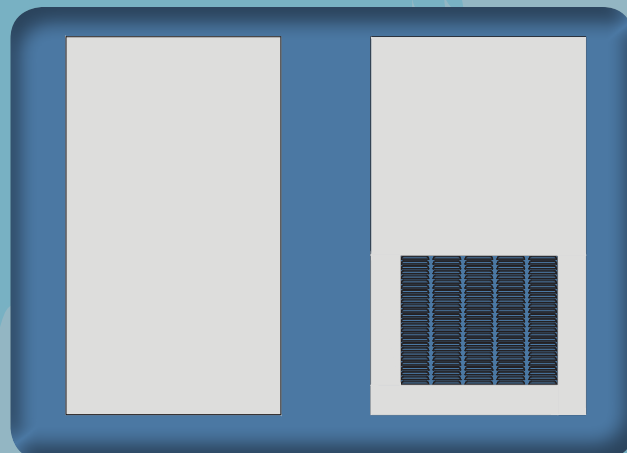
*Easy slide in filter to replace
bottom insulation board
Solid panel easily installed with
thumb screws*



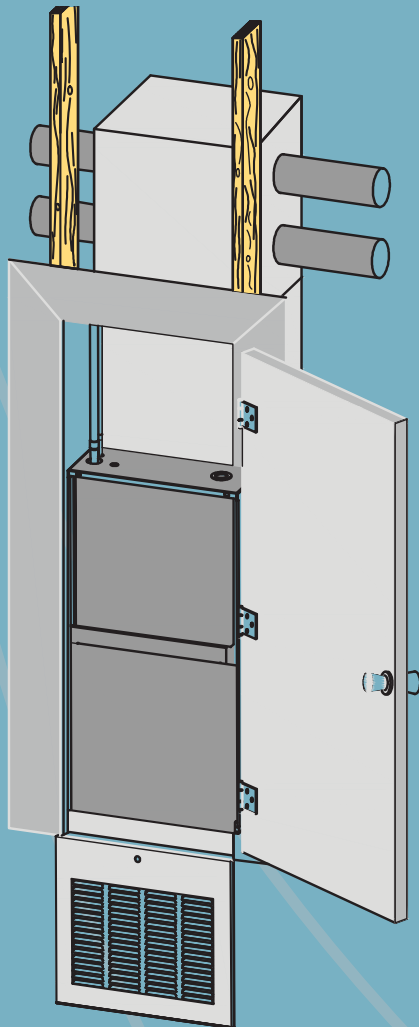


Cabinet Dimensions						
Model	Cabinet Height - A	Cabinet Width - B	Cabinet Depth - C	Plenum Width - D	Plenum Depth - E	Filter Size
VL 18 - 24	36.75"	18.25"	18.25"	16.50"	10.50"	18" x 18" x 1"
VLD (B,F) 18 - 36	40.00"	20.00"	23.00"	18.50"	16.00"	20" x 20" x 1"
VLDW (D,B,F) 18 - 36	40.00"	20.00"	23.00"	18.50"	16.00"	20" x 20" x 1"
VLL 30 - 42	40.00"	24.00"	24.00"	22.25"	18.00"	24" x 24" x 1"

Optional Return Grille		
Model	Height	Width
Unit Mounted Grilles		
RTS - 1AS (VL)	41.75"	22.75"
RTS - 2AS (VL*)	41.50"	22.50"
Wall Mounted Grilles		
RTU - 1AS (VL)	41.75"	22.75"
RTU - 2AS (VL*,VL*W)	44.75"	24.75"



VL* Applications



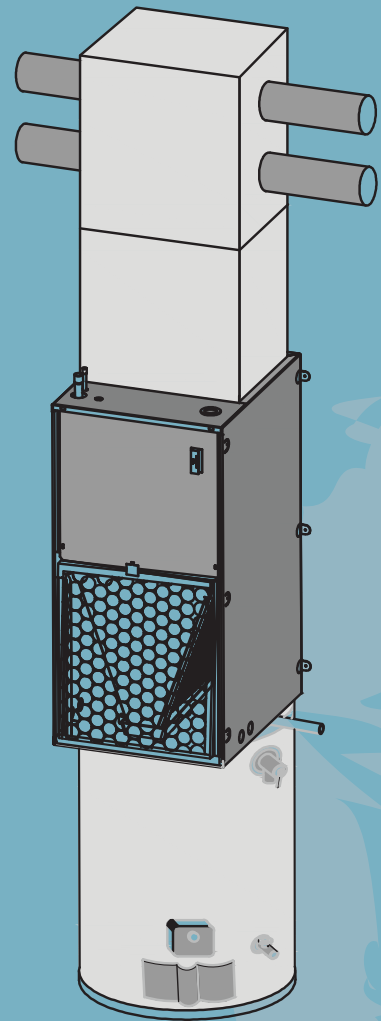
VL* Air Handler Installed in Closet

To install the VL* unit into the closet, remove bottom duct board and install a solid bottom door panel. Then install a filter grille below.

VL* Bottom Door Panel

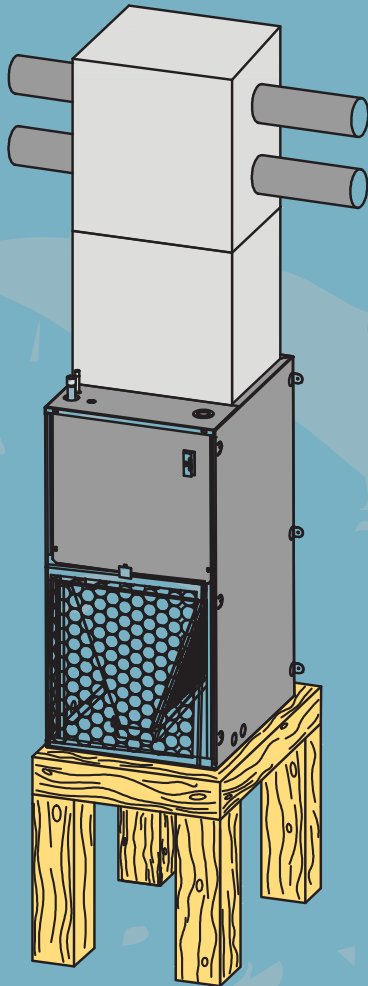
Part

- VL* - LCP - 1AS
- VL* - LCP - 2AS

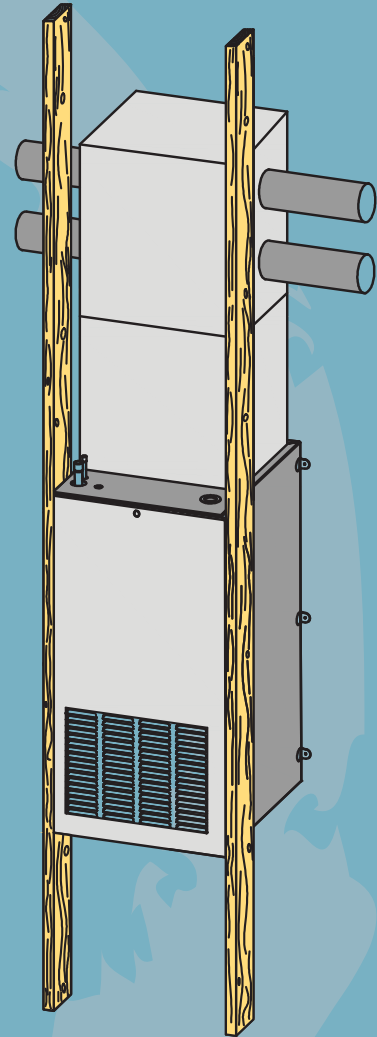


VL* Air Handler Installed Above a Water Heater

To install the VL* unit above a hot water heater, take solid panel off and install filter in front of the unit.



VL* Air Handler Attached to Back Wall
OR
Mounted on a Platform in Utility Room



VL* Air Handler Installed in a
Stud / Wall Mount
Application

Filter Panel Available in
Various Sizes

Single or Multi-Family Air Handlers

Multi-Position Air Handler

Features:

- Multi-Position - Up-Flow, Horizontal Right or Horizontal Left
- Polymer drain pan
- Attractive, powder painted exterior
- Fully insulated cabinet
- 208/ 230 VAC operation
- Multi-Speed Direct Drive Blower
- SL air flow from 600 to 1200 CFM
- SLT* air flow from 800 to 1600 CFM
- BLN* air flow from 1200 to 2000 CFM
- BLNT* air flow from 1600 to 2000 CFM

Optional Features:

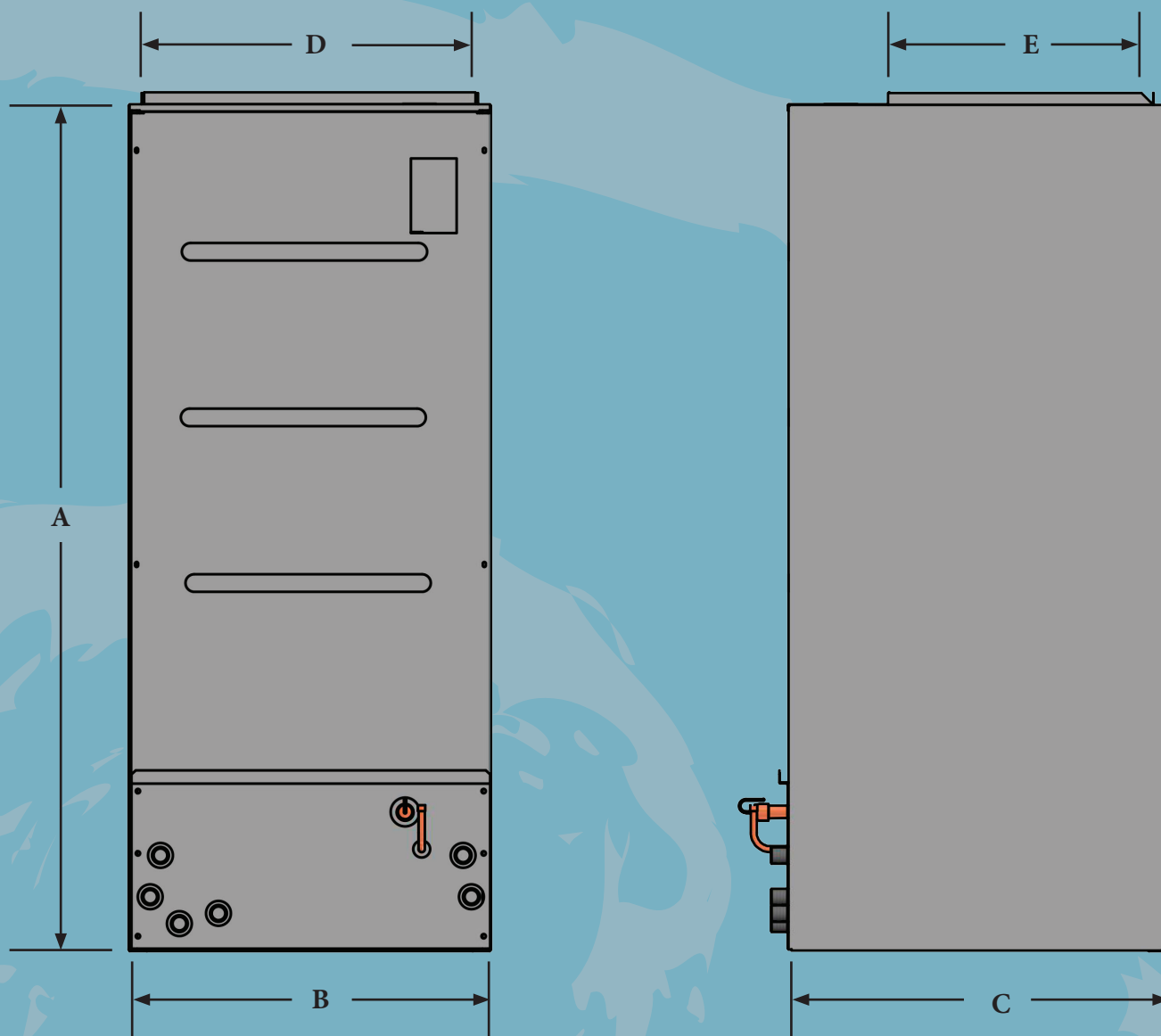
- Factory installed Thermal Expansion Valve
- Optional factory installed Electric Heat
3, 5, 6, 8, 10, 15, or 20 kW
- Electrical Breakers is standard with 15 and 20 kW heaters
- Slide in Long Life Aluminum or Copper DX Coils available
- Field installed Heat kits available from 3 kW - 20 kW



Multi-Position Air Handlers
Patent Product



- The AllStyle Multi-Position Air Handler that is a Patent Product has 3x Durable Polymer Drain Pans for Left, Right, or Up-Flow
- Multi-Position Air Handler provides you with various options for installation when encountering size restrictions
- Deeper Coil - More Efficiency



Cabinet Dimensions					
Model	Cabinet Height - A	Cabinet Width - B	Cabinet Depth - C	Supply Width - D	Supply Depth - E
SL 18 - 36	45.00"	20.25"	21.75"	18.25"	15.00"
SLT 24 - 48	51.50"	20.25"	21.75"	18.25"	15.00"
BLT 36 - 60	51.00"	21.50"	23.00"	20.00"	19.25"
BLN 36 - 60	51.00"	21.50"	26.50"	20.00"	19.25"
BLNT 48 - 60	56.00"	21.50"	26.50"	20.00"	19.25"

Single or Multi-Family Air Handlers

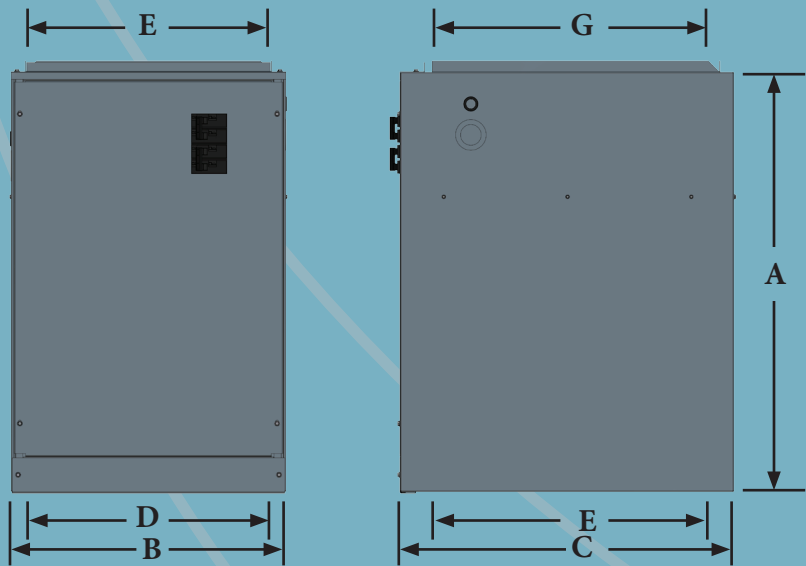
Multi-Position Modular Air Handler

Features:

- Multi-Position Modular Air Handler
- Cabinet matches with AHRI Rated Coils
- Powder painted exterior
- Internal 1" Filter Rack
- Compact design
- 208/ 230 VAC operation
- 24 volt Control Transformer
- Fully insulated cabinet interior
- Aluminum or Copper tube

Optional Features:

- Electric Heat 3, 5, 6, 8, 10, 15, or 20 kW
- Twin Circuit protection provided on 15 & 20 kW models
- Field installed Heat kits available from 3 kW - 20 kW



Blower A/C Capacity	
2D - 1.5 to 2.0 Tons	
3D - 2.5 to 3.0 Tons	
4D - 3.5 to 4.0 Tons	
5D - 5.0 Tons	

Cabinet Dimensions							
Model	Cabinet Height - A	Cabinet Width - B	Cabinet Depth - C	Return Width - D	Return Depth - E	Supply Width - F	Supply Depth - G
ELB 2D - 3D	27.00"	17.25"	21.50"	17.25"	19.50"	16.75"	19.25"
EFM 4D - 5D	27.00"	21.25"	21.50"	19.50"	19.50"	19.50"	19.25"

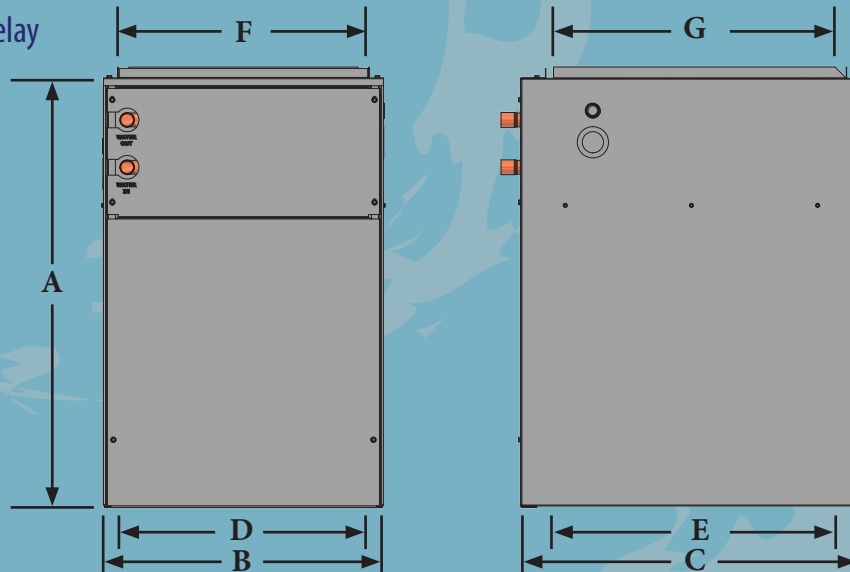
Multi-Position Modular Hydronic Air Handler

Features:

- Multi-Position Modular Hydronic Air Handler
- Cabinet Matches with ARI Rated Coils
- Powder Painted Exterior
- Internal 1" Filter Rack
- Compact Design
- Specify 115 or 208/230 VAC
- Control Transformer
- Pump Relay & 2 Speed Fan Relay
- Fully Insulated Cabinet Interior
- Connections to Hot Water Heating Coil are Manufactured on the Front of the Heating Unit

Optional Features:

- Entering Water Temp, Thermostat
- Freeze-Stat
- Time Delay Relay



Cabinet Dimensions							
Model	Cabinet Height - A	Cabinet Width - B	Cabinet Depth - C	Return Width - D	Return Depth - E	Supply Width - F	Supply Depth - G
WLB 2D - 3D	27.00"	17.25"	21.50"	16.75"	19.50"	16.25"	19.25"
WFM 4D - 5D	27.00"	21.25"	21.50"	19.50"	19.50"	19.50"	19.25"

Mobile Home Products

Mobile Home Modular Air Handlers

Features:

- Designed specifically for Mobile Home use
- Down-Flow application
- 3.0 - 5.0 Ton Capacity
- Available with Electric Heat up to 20 kW
- High Efficiency Long Life Aluminum or Copper DX Coils
- Attractive, powder coated painted exterior
- Field installation Heat kits available from 3 kW - 20 kW



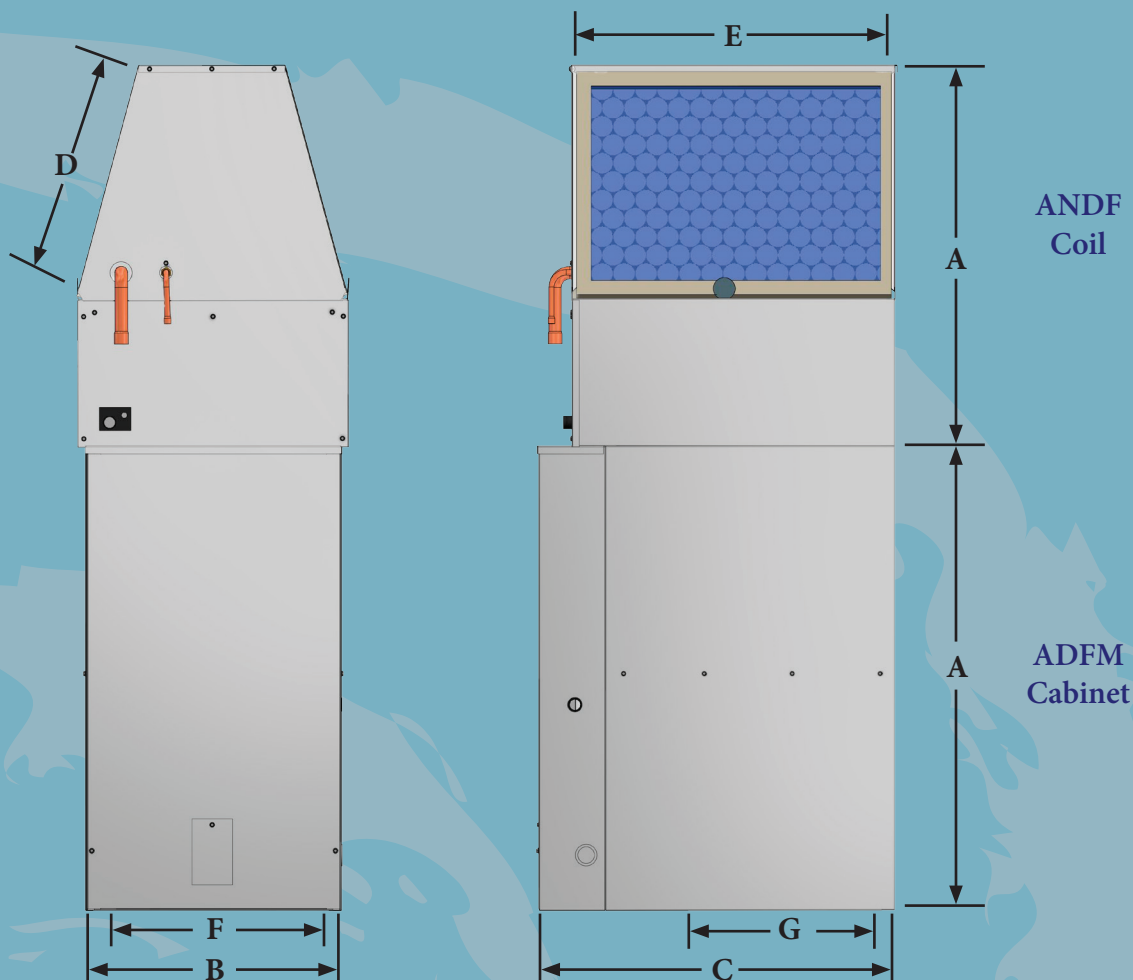
Down-Flow Mobile Home Drives

ADFM-4D (1/2 HP)

Use ADFM-4D for 3-4 Tons Applications

ADFM-5D (3/4 HP)

Use ADFM-5D for 5 Tons Applications



Cabinet & Coil Dimensions							
Model	Cabinet			Return/ Filters (x2)		Supply (Downflow)	
	Height - A	Width - B	Depth - C	Width - D	Depth - E	Width - F	Depth - G
ADFM - 3D - 4D	31.50"	18.50"	23.75"	16.00"	20.00"	15.50"	16.00"
ADFM - 5D	31.50"	21.50"	23.75"	16.00"	20.00"	15.50"	16.00"
ANDF Coil							
ANDF (3D-4D)	26.00"	18.50"	20.25"	16.00"	20.00"	15.50"	16.00"
ANDF (5D)	32.00"	21.50"	20.25"	20.00"	20.00"	15.50"	16.00"

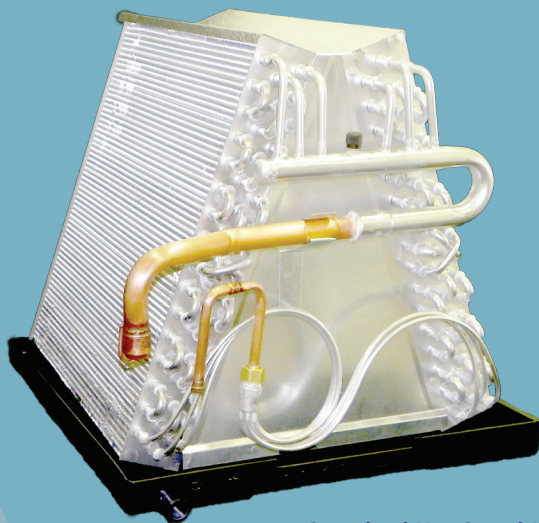
- Note: ADFM Air Handlers & the ANDF Coil are ordered separately to provide a variable of options

Blower A/C Capacity
3D - 2.5 to 3.0 Tons
4D - 3.5 to 4.0 Tons
5D - 5.0 Tons

RP54003	Drain Pan Replacement
RP21056	Front Louvered Panel Coil Cover
Filter 3D-4D	(2) - 20 x 20 x 1
Filter 5D	(2) - 20 x 25 x 1

Mobile Home Products

Un-Cased Mobile Home Coils



Standard Un-Cased Mobile Home Coil

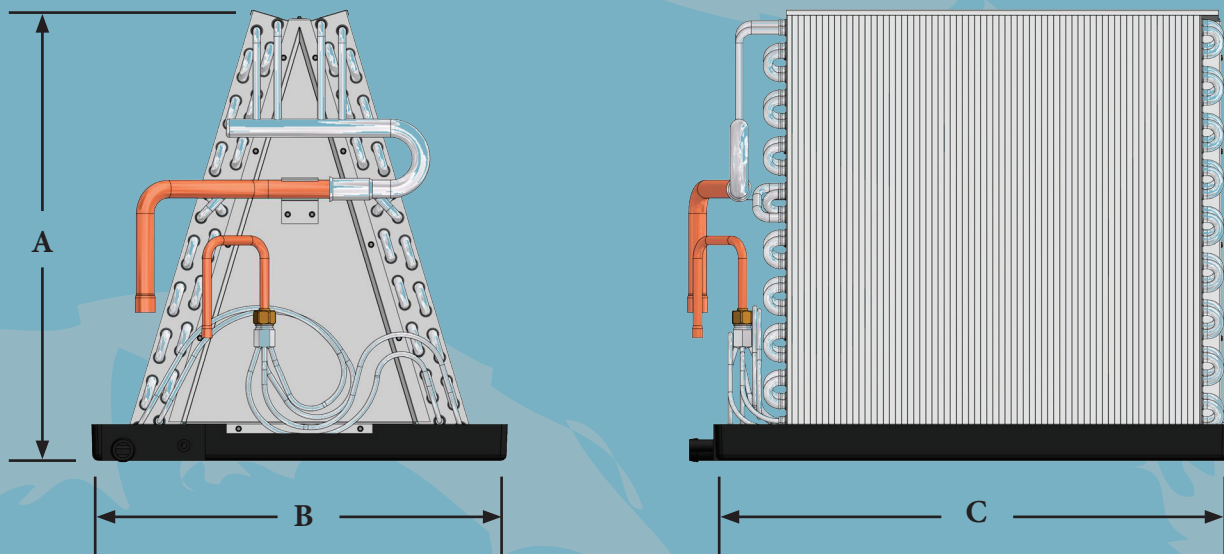
Features:

- Pitched polymer drain pan
- Left Hand refrigerant and drain connections
- Flexible tube drain connection
- Field installed TXV
- Coil elevated from condensate
- Long Life Aluminum or Copper tube
- Aluminum fins and end plates
- Pressure tested to 500 PSI
- R -410A compatible

- Quick-Connect fittings are optional
- (AERO-QUIP #6 & #11)
** Add 'QC' to Model number
- 3/8" Liquid Line connection
- Suction Line Connections
3/4" on 1.5 to 3.0 Tons
7/8" on 3.5 to 5.0 Tons



"M" Coil
Patent Product



Cabinet Dimensions			
Model Number	Coil Height - A	Coil Width - B	Coil Depth - C
ASUM24 - A266 (G, T)	16.50"	18.25"	19.50"
ASUM24 - A286 (G, T)	18.50"	18.25"	19.50"
ASUM36 - A364 (G, T)	16.50"	18.25"	19.50"
ASUM36 - A384 (G, T)	18.50"	18.25"	19.50"
ASUM48/60 - A4Z0 (G,T)	24.50"	18.25"	19.50"
ASUM36 - M266 (G,T)	16.50"	18.25"	19.50"
ASUM48 - M286 (G, T)	18.50"	18.25"	19.50"
ASUM48/60 - M206 (G,T)	20.50"	18.25"	19.50"
ASUM48/60 - M2Y4 (G,T)	22.50"	18.25"	19.50"
ASUM48 /60 - M2Z6 (G,T)	24.50"	18.25"	19.50"

- T / E - Copper
- G - Aluminum

Mobile Home Products

AllStyle Mobile Home or Commercial Piggyback Package



Patent Product

**A new product manufactured by
AllStyle A/C Manufacturing.
The AMCP**

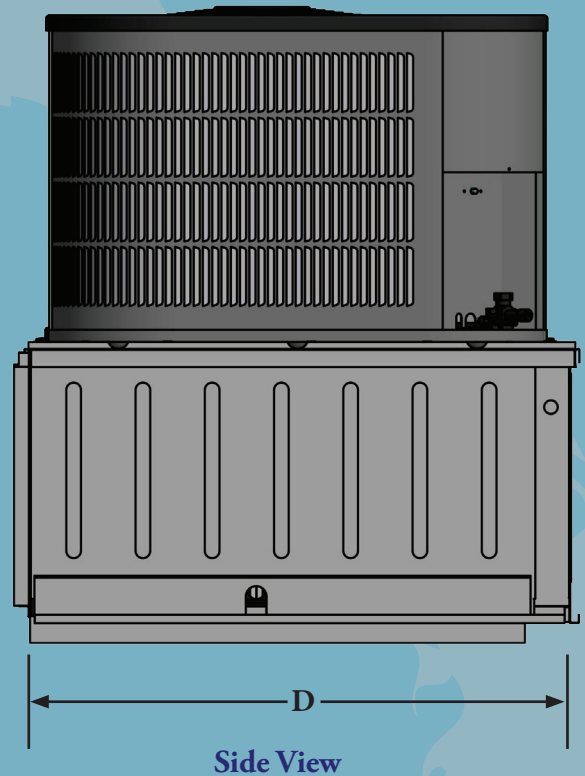
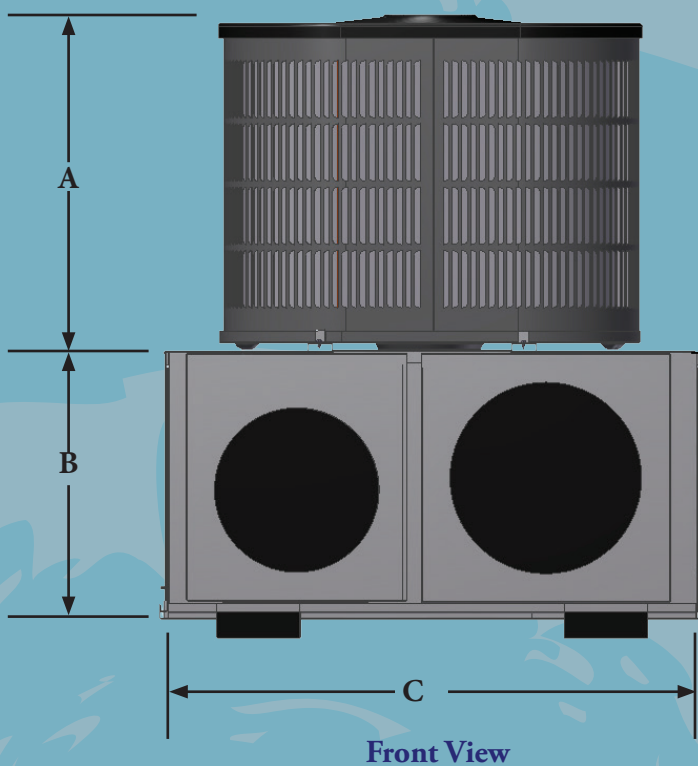
AllStyle Mobile Home or Commercial Piggyback

Features:

- Mobile Home and up to 5 ton Light Commercial Applications
- Side Discharge Application
- Compact High-Efficiency Design
- Corrosion Resistant, Powder Painted Galvanized Steel Casing, Fully Louvered
- Long Life Aluminum Round Tubing
- High Efficiency Compressor
- 208/230 VAC Operation
- Multi-Speed Direct Drive Blower

Optional Features:

- Optional Electric Heat
3, 5, 6, 8, 10, 15, or 20 kW
- Breakers are installed with 15kW & 20 kW heaters



AMCP Tonnage	Condenser Height - A	Air Handler Height - B	Unit Width - C	Unit Depth - D	Round Duct Adapter Diameter
AMCP*24	20.50"	19.50"	40.50"	40.50"	12.00" & 14.00"
AMCP*36	24.50"	19.50"	40.50"	40.50"	12.00" & 14.00"
AMCP*48	28.50"	19.50"	40.50"	43.00"	14.00" & 16.00"
AMCP*60	32.50"	19.50"	40.50"	43.00"	14.00" & 16.00"

AMCP Units are shipped with round duct adapters installed
 Remove round duct adapters if square duct adapters are required
 Square duct adapters 16" x 18"

AMCP
 5 Ton
 Commercial Application shown



Commercial Coils

Up-Flow Commercial Coil



SINGLE CIRCUIT

ABM 96

1 1/8" Suction Line
1/2" Liquid Line

ABM 120

1 3/8" Suction Line
5/8" Liquid Line

ABM 180

1 5/8" Suction Line
5/8" Liquid Line

ABM 244

1 5/8" Suction Line
5/8" Liquid Line

DUAL CIRCUIT

ABM 96 50/50

7/8" Suction Line
3/8" Liquid Line

ABM 120 50/50

7/8" Suction Line
3/8" Liquid Line

ABM 180 50/50

1 1/8" Suction Line
1/2" Liquid Line

ABM 244 50/50

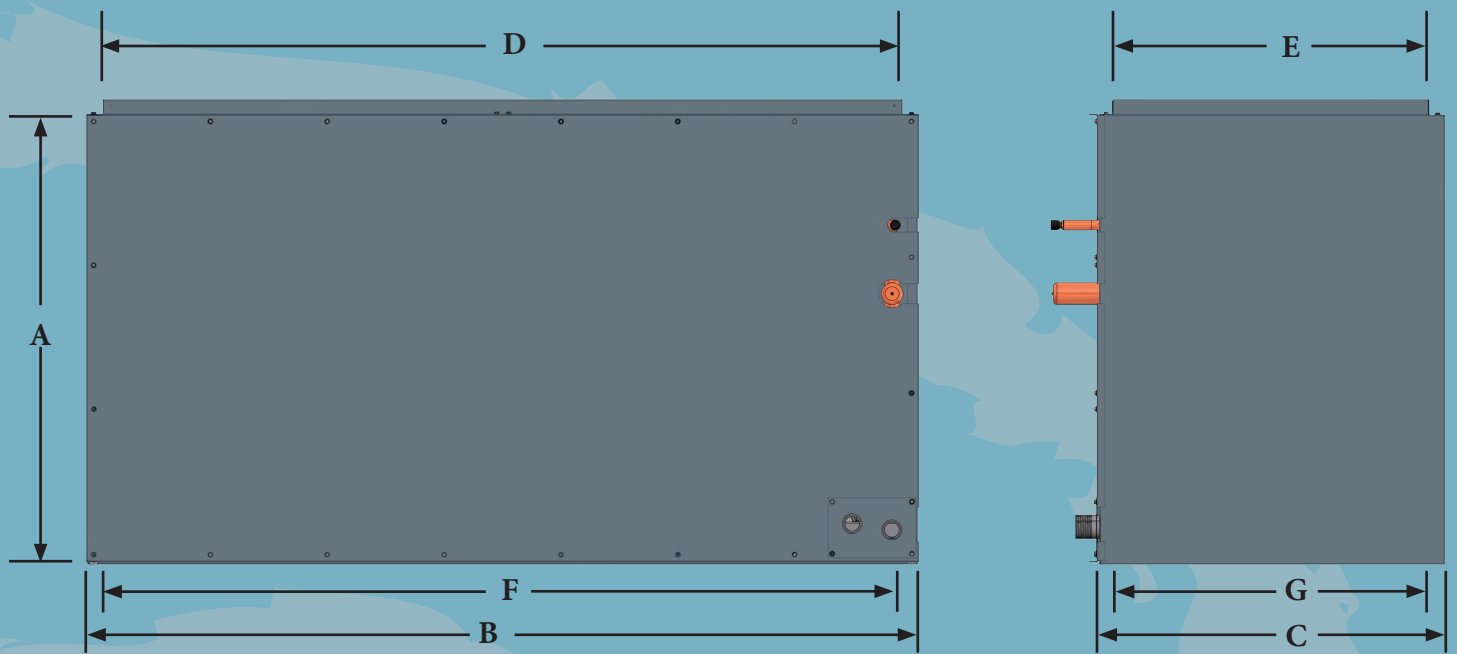
1 3/8" Suction Line
5/8" Liquid Line

Features:

- Choose between 8 to 20 Ton Nominal Capacity
- Copper tubing
- Heavy, Aluminum fins and end plates
- Single or Dual Refrigerant Circuits.
- Expansion Valve Refrigerant Metering
- Galvanized, corrosion resistant steel drain pans
- Coils are pressure tested to 500 PSI before assembly
- Attractive, corrosion resistant painted steel casing
- May be combined with additional units
- Match Units with two gas furnaces for 140, 000 btu or an electric air handler with heat strips 20kW - 40kw
- Coils are sold separately from gas furnaces and electric air handlers



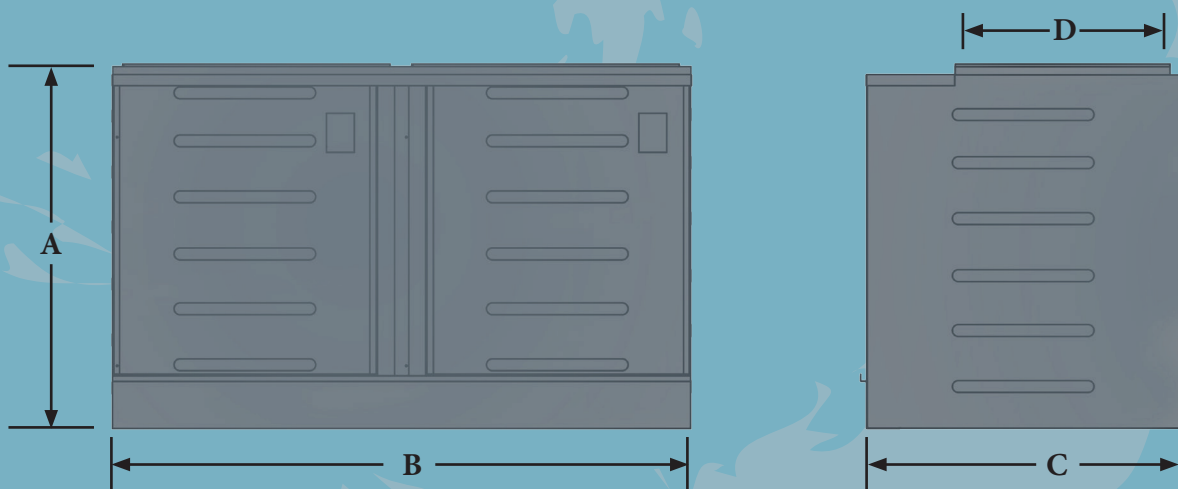
**AllStyle has gas or electric heat units in stock!
8 - 10 Ton Condensing Units Available**



R-410a Commercial Dimensions								
Coil Model	Capacity	Cabinet			Top Opening		Bottom Opening	
		Height - A	Length - B	Depth - C	Width - D	Depth - E	Width - F	Depth - G
ABM72* + V (R410a)	6 Tons	26.00"	42.00"	21.50"	40.25"	19.75"	40.75"	20.25"
ABM96* + V (R410a)	7.5 Tons	26.00"	42.00"	21.50"	40.25"	19.75"	40.75"	20.25"
ABM120* + V (R410a)	10 Tons	30.00"	52.00"	21.50"	50.25"	19.75"	50.75"	20.25"
ABM180* + V (R410a)	15 Tons	34.00"	65.00"	21.50"	63.25"	19.75"	63.75"	20.25"
ABT180* + V (R410a)	15 Tons	30.00"	65.00"	21.50"	63.25"	19.75"	63.75"	20.25"
ABM244* + V (R410a)	20 Tons	34.00"	65.00"	26.50"	63.25"	24.75"	63.75"	25.25"

* - Coil Designation

Commercial Electric Air Handler



Air Handler Model	Air Handler Height - A	Air Handler Length - B	Air Handler Depth - C	Air Handler Top Opening - D
ABAH8 T-D	32.00"	42.00"	28.00"	20.25"
ABAH10 T-D	32.00"	52.00"	28.00"	20.25"
ABAH15 T-D	32.00"	65.00"	28.00"	20.25"
ABAH20 T-D	32.00"	65.00"	28.00"	25.25"

Commercial Coils

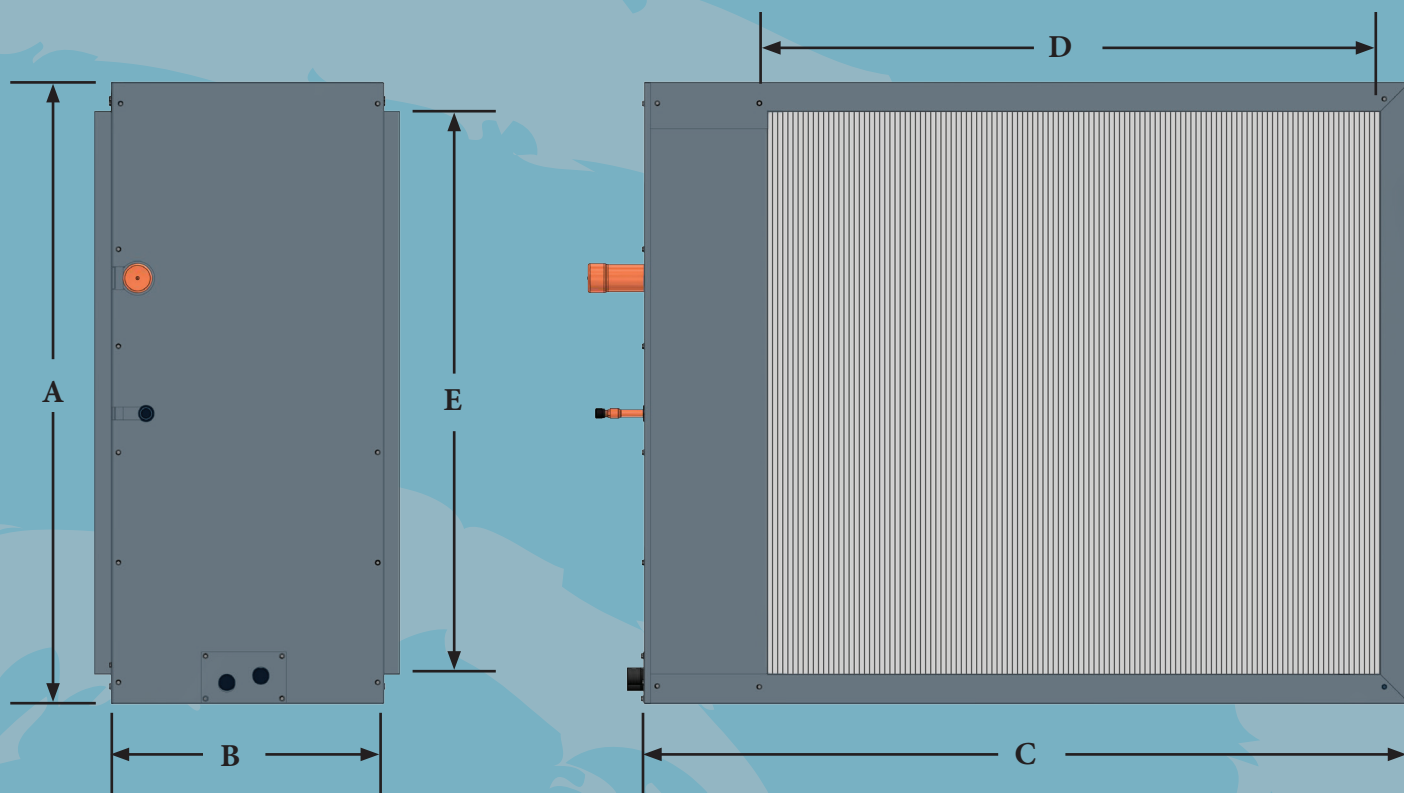
Horizontal Slab Commercial Coil



Dual Circuit Commercial
Patent Product

Dual Circuit

- Choose between 6 to 20 Ton Nominal Capacity
- Copper tubing
- Heavy, Aluminum fins and end plates
- Single or Dual Refrigerant Circuits
- Expansion Valve Refrigerant Metering
- Polymer drain pan
- Coils are pressure tested to 500 PSI before assembly
- Bi-Directional Air Flow
- Attractive, corrosion resistant painted steel casing
- May be combined with additional units



Model	Capacity	Cabinet			Plenum Opening		Suction Line	Liquid Line	Drain Connection
		Height - A	Width - B	Length - C	Width - D	Height - E			
ABH72*	6 Ton	24.50"	16.00"	45.00"	40.00"	21.00"	7/8"	3/8"	3/4"
ABH96*	7.5 - 8 Ton	24.50"	16.00"	45.00"	40.00"	21.00"	1 1/8"	1/2"	3/4"
ABH120*	10 Ton	36.50"	16.00"	45.00"	40.00"	33.50"	1 3/8"	1/2"	3/4"
ABH180*	15 Ton	36.50"	16.00"	69.25"	60.00"	33.50"	1 5/8"	5/8"	3/4"
ABH244*	20 Ton	36.50"	16.00"	69.25"	60.00"	33.50"	1 5/8"	5/8"	3/4"
Inlet and Outlet Plenum dimensions are the same									

* - Coil Designation

Model ASH Dual Circuit	Suction Line	Liquid Line
ABH72* 50/50	3/4"	3/8"
ABH96* 50/50	7/8"	3/8"
ABH120* 50/50	7/8"	3/8"
ABH180* 50/50	1 1/8"	1/2"
ABH244* 50/50	1 3/8"	5/8"

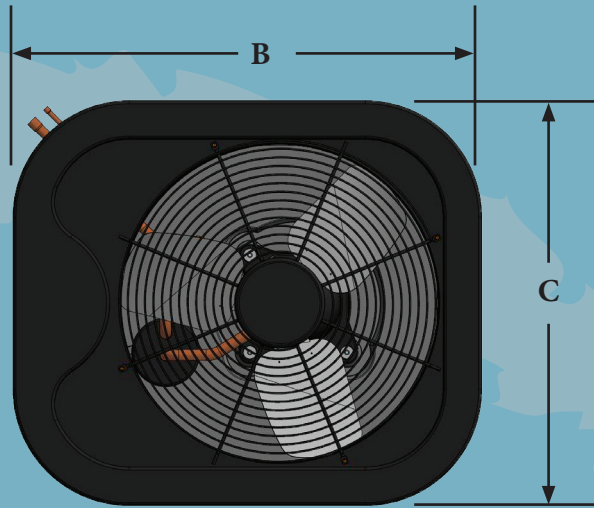
Condensers

Aluminum Coil Series



Features:

- Compact High Efficiency Design
- Single and Multi-Family Residential Applications
- One Foot Print 1.5 to 5.0 Tons
- Sound Absorbing Injection Molded Top Cap
- Corrosion resistant, powder painted, galvanized steel casing. Fully Louvered
- High Efficiency Compressor
- Liquid Line Drier (Not Installed)
- Liquid Line Connection
3/8" on 1.5 to 5.0 Tons
- Suction Line Connection
3/4" on 1.5 to 3.0 Tons
7/8" on 3.5 to 5.0 Tons
- Easy access brass Service Valves
- Easy serviceability, a single screw opens the Electrical Access Panel
- Grille/ Motor Mount for quiet fan operation



Condenser Dimensions			
Model	Height - A	Length - B	Width - C
BAC*018**	20.50"	36.25"	31.25"
BAC*024**	20.50"	36.25"	31.25"
BAC*030**	24.50"	36.25"	31.25"
BAC*036**	24.50"	36.25"	31.25"
BAC*042**	28.50"	36.25"	31.25"
BAC*048**	28.50"	36.25"	31.25"
BAC*060**	32.50"	36.25"	31.25"

* - Denotes SEER

** - Denotes Condenser coil

Condensers

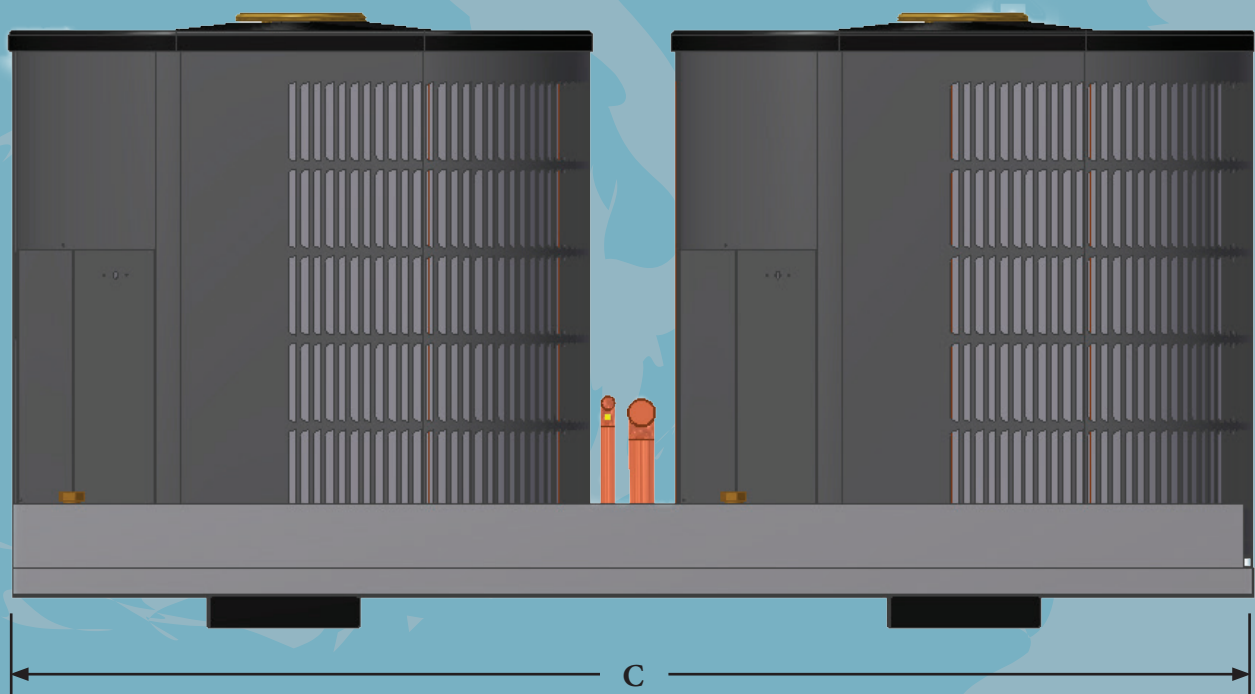
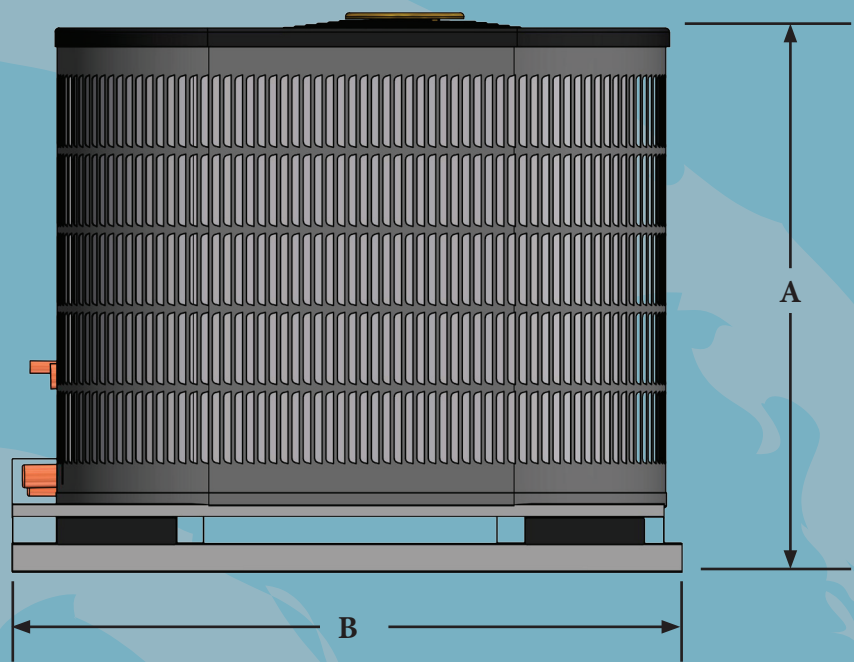
Allstyle Broadair Twin Condensing Units



Features:

- Compact High Efficiency Design
- Commercial applications
- Sound Absorbing Injection Molded Top Cap
- Corrosion resistant, powder painted, galvanized steel casing. Fully Louvered
- High Efficiency Compressor
- Easy access brass Service Valves
- Easy serviceability, a single screw opens the Electrical Access Panel
- Grille/ Motor Mount for quiet fan operation

Side View



Back View

Model	Unit Height - A	Unit Width - B	Unit Length - C
ABTC - 96 - P3 ABTC48L/ABTC48R	32.50"	40.00"	66.25"
ABTC - 120 - P3 ABTC60L/ABTC60R	36.50"	40.00"	66.25"

AllStyle RoofTop or Commercial Piggyback Package

Patent Product

**A new product manufactured by
AllStyle A/C Manufacturing.**

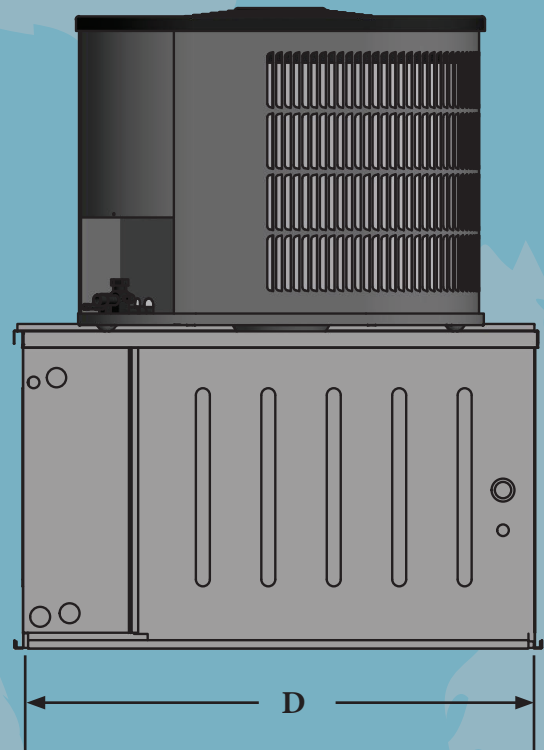
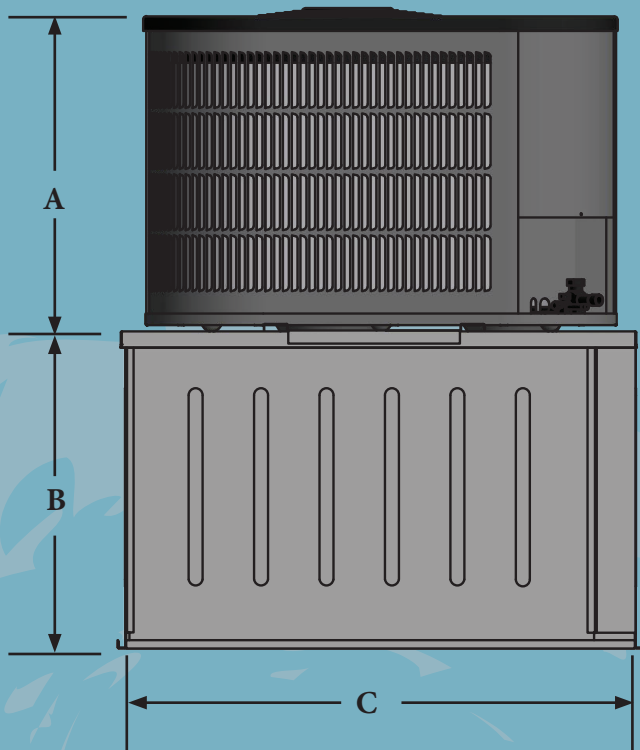
The ARCP

AllStyle RoofTop or Commercial Piggyback

Coming Soon

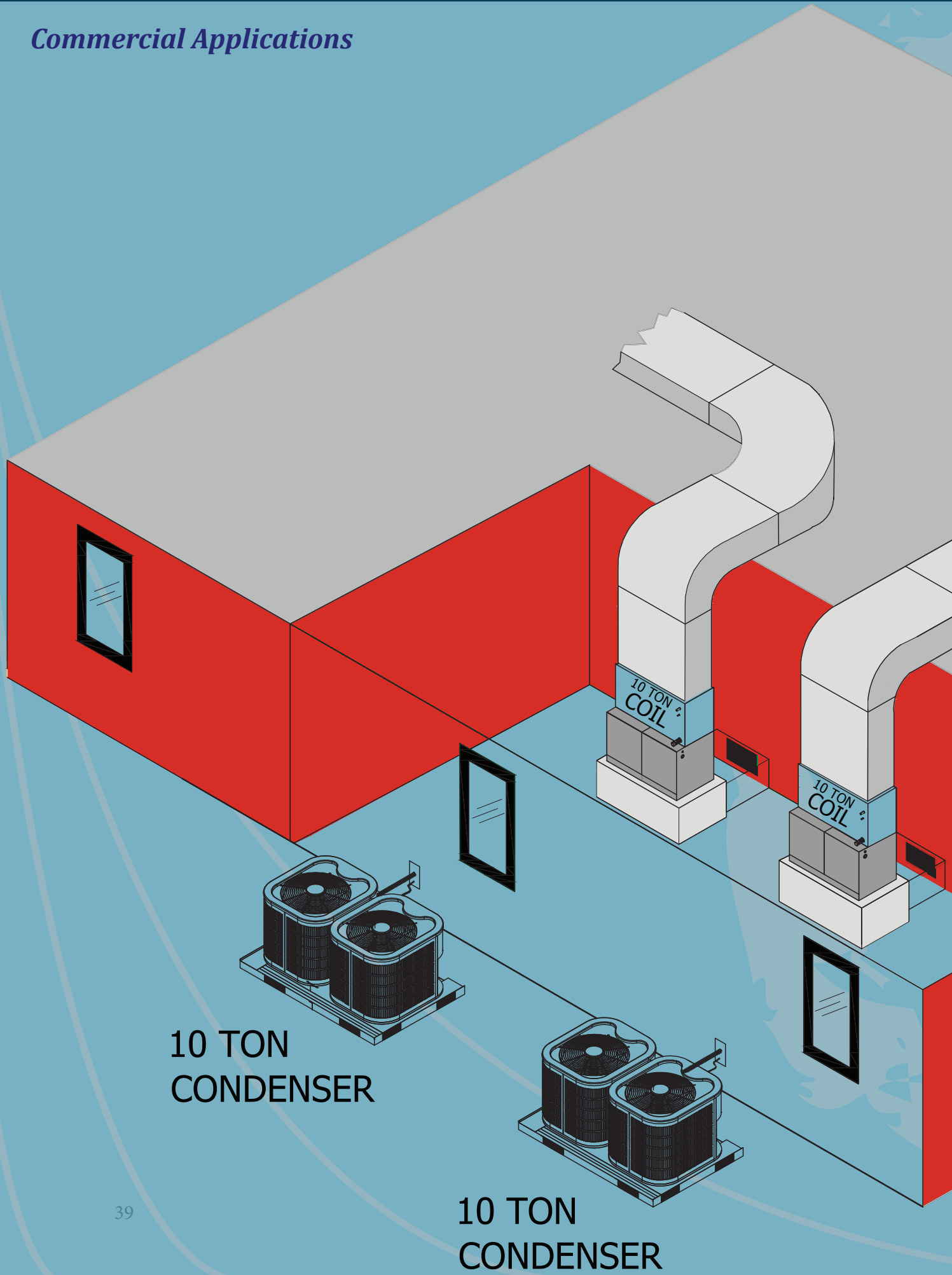
Features:

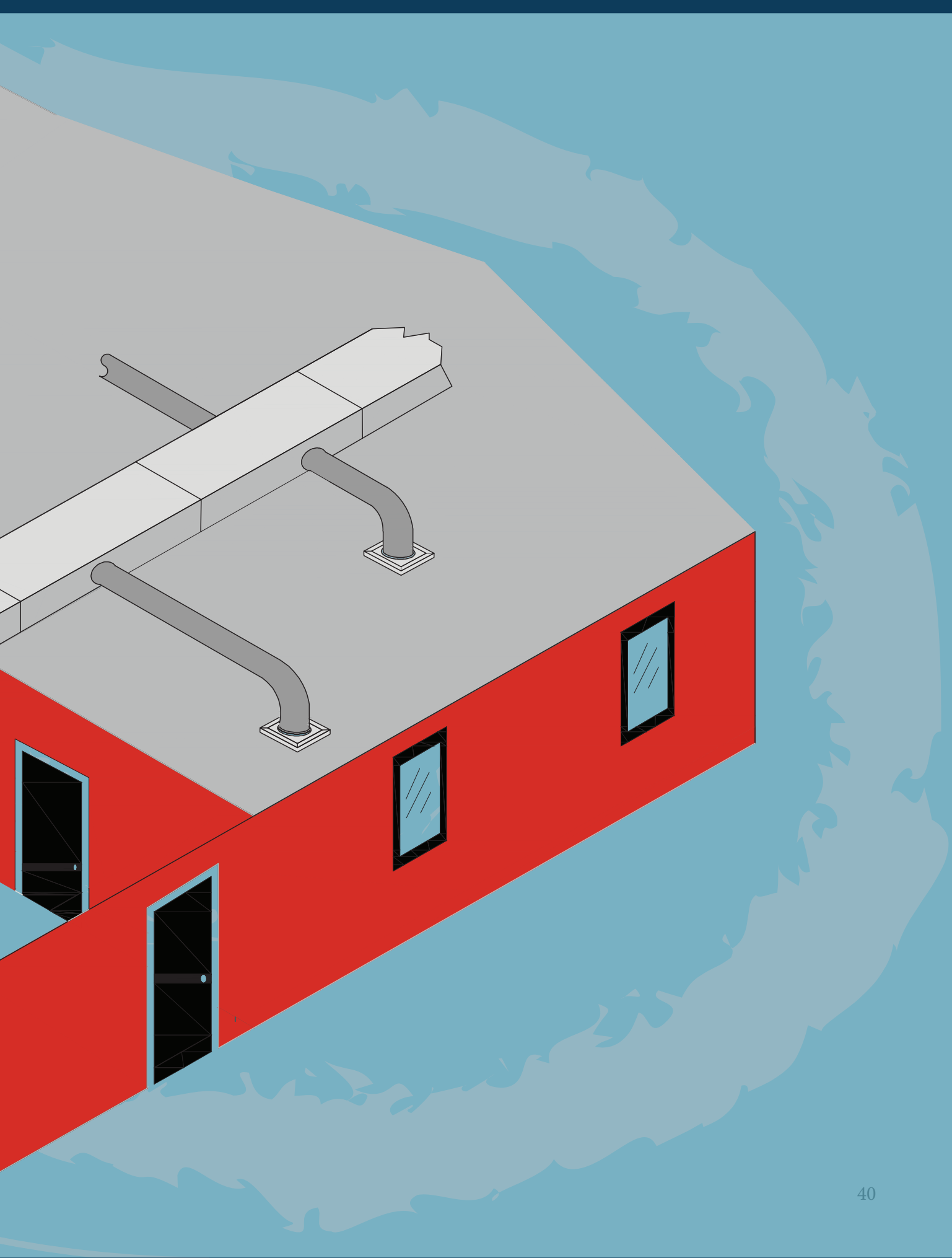
- RoofTop Voltage Single and 3 Phase
- Down-flow
- Compact High-Efficiency Design
- Corrosion Resistant, Powder Painted Galvanized Steel Casing, Fully Louvered
- Long Life Aluminum Round Tubing
- High Efficiency Compressor
- 208/230 VAC Operation
- Multi-Speed Direct Drive Blower



ARCP Tonnage	Condenser Height - A	Air Handler Height - B	Unit Width - C	Unit Depth - D
ARCP*24	20.50"	21.50"	41.50"	41.50"
ARCP*36	24.50"	21.50"	41.50"	41.50"
ARCP*48	28.50"	23.25"	41.50"	41.50"
ARCP*60	32.50"	23.25"	41.50"	41.50"

Commercial Applications







With our innovative products that provide easy serviceability, less manpower, and low operating costs, AllStyle Coil Company, L.P., will continue to be the premier independent coil company.



Proudly Made in the U.S.A.
2018

