



# Durofix RV332 Control Button Replacement

This guide will demonstrate how to properly replace a defective control button on a Durofix RV332 Cordless Li-ion Screwdriver.

Written By: Tyler Vincent



 **TOOLS:**

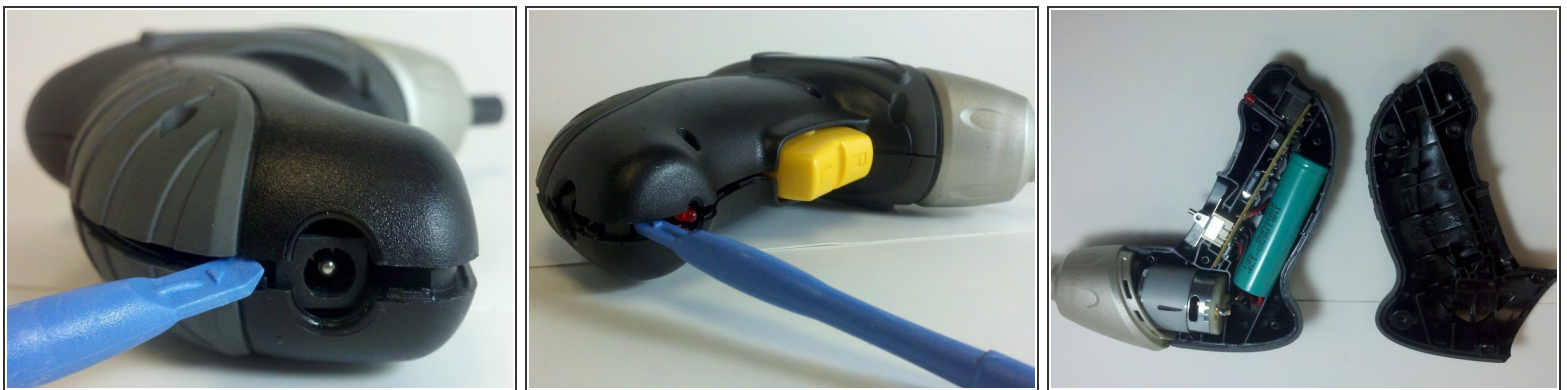
- [Phillips #0 Screwdriver](#) (1)
  - [Spudger](#) (1)
  - [iFixit Opening Tools](#) (1)
-

## Step 1 — Control Button



- Remove the six 13 mm casing screws with a #0 Phillips screwdriver.

## Step 2



- Separate screwdriver casing halves with a plastic opening tool.

### Step 3



- Remove the yellow plastic control button from the screwdriver casing.
- With the defective button removed, replace with a new control button.

To reassemble your device, follow these instructions in reverse order.