

RadioRA²

HOMWORKS^{QS}

Lutron Home Control+ App for the Apple® iPad™, iPhone™ and iPod® touch
Lutron Home Control+ App for Android™

revision E

Overview	3
What hardware and software do I need?.....	5
How does the iPad/iPhone/iPod Touch/Android connect to my Lutron system? 5	
RadioRA 2 Configuration:	6
HomeworksQS Configuration:	6
How to configure the Lutron Home Control+ App	7
How to set up the PC Software	7
RadioRA 2:.....	7
HomeworksQS:	10
Download the Lutron Home Control+ App.....	14
How to use the iPhone/iPod Touch/Android App	16
Configure the demo system.....	16
Edit Systems.....	17
Navigating the app.....	21
Set up your Favorite keypad, light, or shade for iPhone/iPod Touch/Android	23
Using Level Editor to change programming on the iPhone/iPod Touch/Android	24
Setting up the Apple Watch	28
Navigating Apple Watch	30
How to Use the iPad and Android Tablet App	31
Changing Systems	32
iPad:	32
Android:	34
Navigating the iPad and Android Tablet App.....	35
Advanced Topics	44
Advanced Settings:	44
Advanced: Syncing homeowner edits with the Lutron system	47
Advanced: Set up your home for access when away.....	47
Option 1: Using Lutron’s Remote Access Service	47
Option 2: Using a VPN	48
Best practices	49

Overview

The iPad, iPhone and iPod touch App is now available for download via the Apple App Store under the name "Lutron Home Control+" for \$19.99.

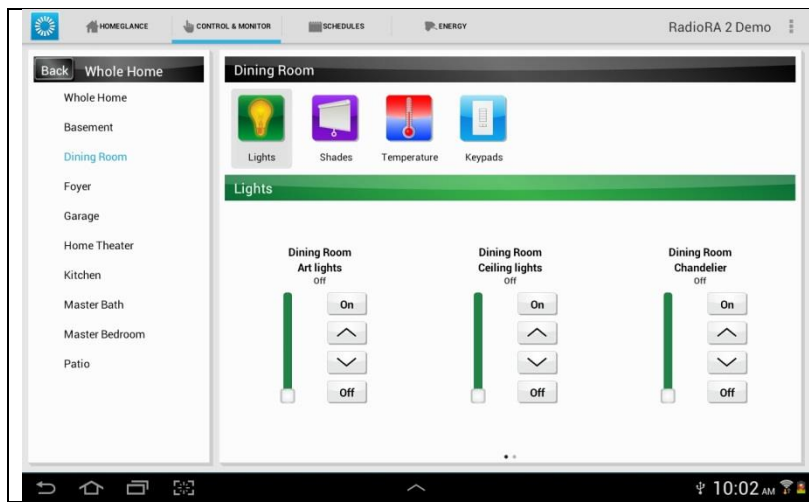
The Android App is available for download on Google Play™ under the name "Lutron Home Control+" for \$19.99.

The Lutron Home Control+ application allows you to control your RadioRA 2 or HomeworksQS system over a Wi-Fi® network with the convenience of your mobile device. It can also be configured to give homeowners control of their home via the Internet over 3G/4G or from a Wi-Fi hotspot.

A demo mode is available to preview the App prior to connecting to a running system.

Below are some of the capabilities of the App.

<p><i>Adjust lights, adjust shades, adjust temperature, view time clock events, or select keypad buttons.</i></p>	<p><i>Individual control of lights and shades (with 2-way lighting level feedback)</i></p>	<p><i>Activate keypad buttons for scenes, individual lights, and path of light control (with 2-way LED feedback)</i></p>



Control Lights, Shades, Keypads, and Temperature all from the same screen using the increased screen real estate offered by the iPad and Android tablets (requires Android version 4.0.3 or higher and a resolution of 960x720 or higher).

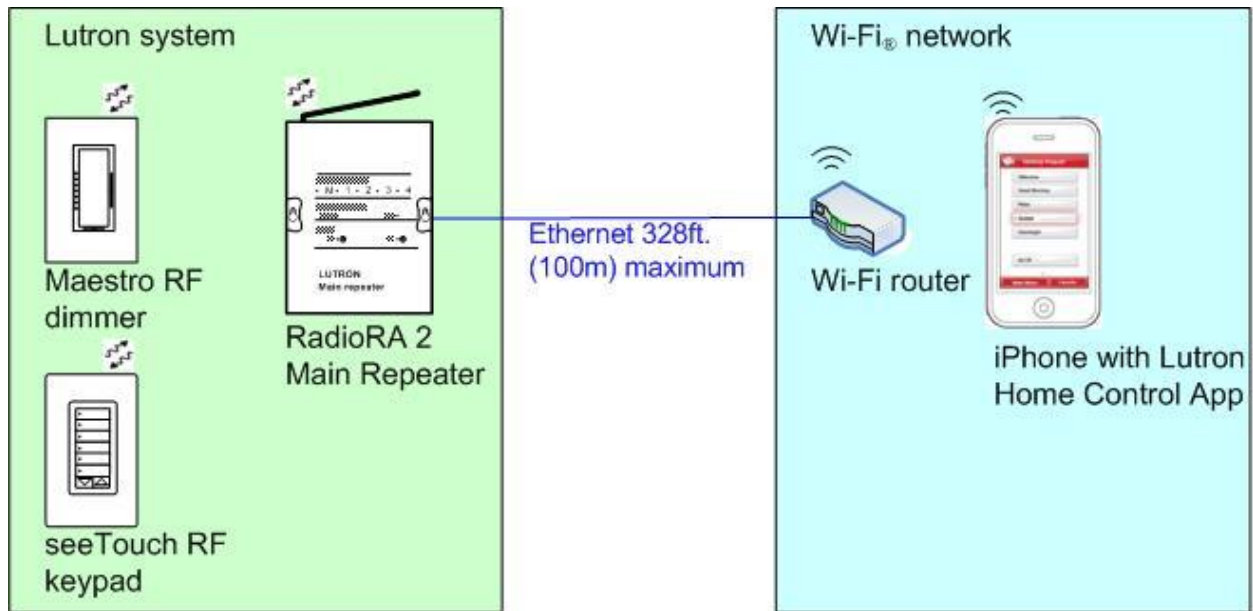
What hardware and software do I need?

1. Mobile device
 - iPad, iPhone or iPod touch with iOS 7.0 or later (the iOS version can be verified by opening the "Settings" App and selecting "General", then selecting "About" and looking at the "Version" row)
 - Android device running Android version 4.0.3 or higher. Android tablet layout requires a screen resolution of 960x720 or higher (the Android version can be verified by opening the "Settings" App and selecting "About Phone")
 - Optional: Apple Watch™ to be used in conjunction only with compatible iPhone.
2. A Wi-Fi Ethernet router (802.11)
3. Lutron System
 - RadioRA® 2 Essentials or Inclusive revision 4.0.0 or higher transferred to your system. The RadioRA 2 software is available to qualified installers only. (Walk-around programmed systems are not compatible with the App).
 - HomeWorks QS revision 1.1.5 or higher transferred to your system. The HomeWorks QS software is available to qualified installers only.
4. If 3G/4G connectivity is desired, there are two solutions available:
 - The homeowner may subscribe to Lutron's remote access service. This can be purchased in the app for \$59.99 per year.
 - Only available in the US/Canada.
 - Requires RadioRA 2 6.1 or greater, or HWQS 5.1 or greater.
 - Please see the Remote Access FAQ for more information:
<http://www.lutron.com/TechnicalDocumentLibrary/Lutron%20Home%20Control%20Remote%20Access%20FAQ.pdf>
 - A VPN router can be set up for the Lutron system. Please refer to the Lutron VPN app note (#231) and the Advanced Topics Section of this document for more details.

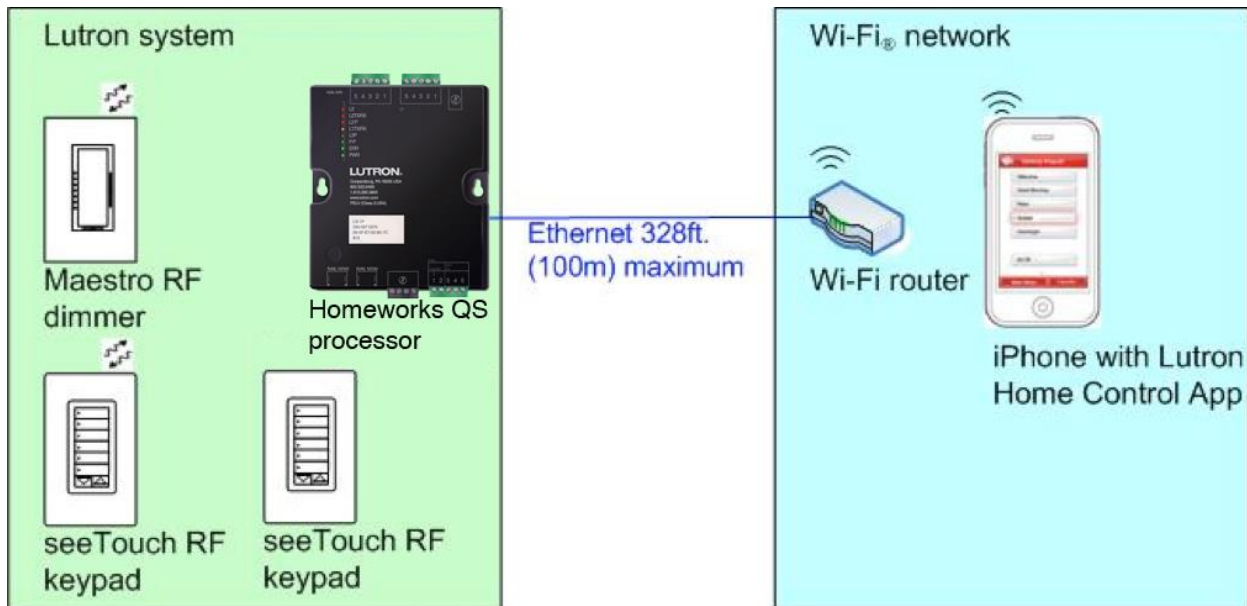
How does the iPad/iPhone/iPod Touch/Android connect to my Lutron system?

The diagram below illustrates the mobile device communicating to a Lutron system via a home Wi-Fi network. A typical connection within the home includes the iPhone establishing a Wi-Fi connection to a Wi-Fi router and the RadioRA 2 Main Repeater or the HomeWorks QS processor making a wired Ethernet connection to the same router. Neither the Main Repeater nor the processor should be plugged into the Internet port on your router.

RadioRA 2 Configuration:



Homeworks QS Configuration:

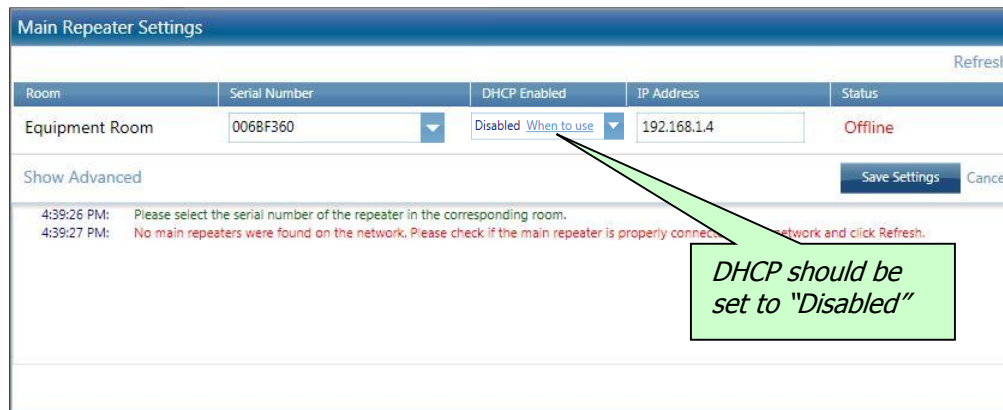
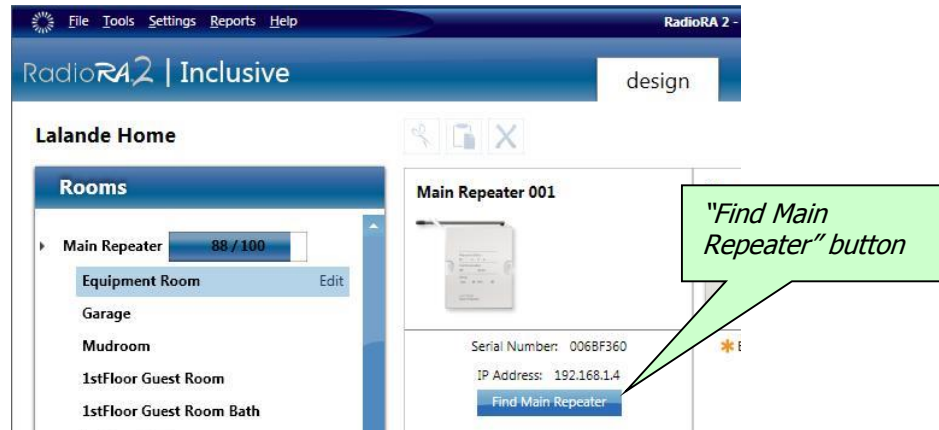


How to configure the Lutron Home Control+ App

How to set up the PC Software

RadioRA 2:

1. Using the latest version of the RadioRA 2 PC software, set your IP address for the Main Repeater as static using the "Find Main Repeater" button. DHCP should be set to "Disabled". It should not be set to "Enabled" because the IP address can be changed by your router after a power outage.



2. Always provide a "Device Name" for keypads in a room. The "Device Name" is the name of the keypad that will show on the mobile device. You should also name the "Location". For dimmers, switches, and shades, make sure to set the "Zone Name".

Add New Device

Available Devices

- Dimmers & Switches
- Keypads
- Auxiliary Repeaters
- Shades

RF seeTouch Keypad

Change Colors

Device Location: Entrance

Device Name: Entrance Keypad

Backlight Brightness: High

Button Kit: W3BRL

Family: seeTouch
Model Number: CW-1-WH
Description: Wall seeTouch 3-button keypad with raise/lower

Cancel Done

Note: Please refer to the product specification sheet for the selected device to ensure that it meets local regulatory requirements.

"Device Location" should always be named.

"Device Name" should always be filled in.

Add New Device

Available Devices

- Dimmers & Switches
- Keypads
- Auxiliary Repeaters

RF Maestro Dimmer

Change Colors

Device Location: [Empty]

Device Type: INC / MLV Dimmer

Zone Name: [Empty]

Fixture Wattage: 0

Fixture Quantity: 1

Total Zone Wattage: 0

Family: RF Maestro
Model Number: RRD-6D-WH
Description: Maestro

Cancel Done

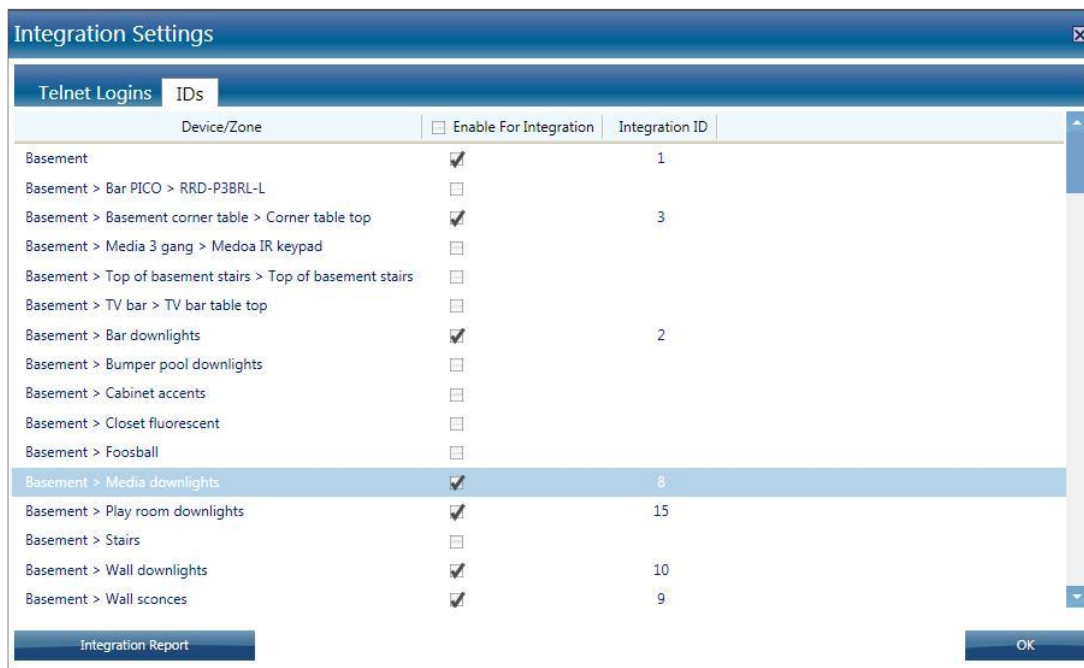
"Device Location" should always be named.

"Zone Name" should always be filled in.

3. Select "Integration" from the "Settings" menu. The "Integration Settings" page will appear.



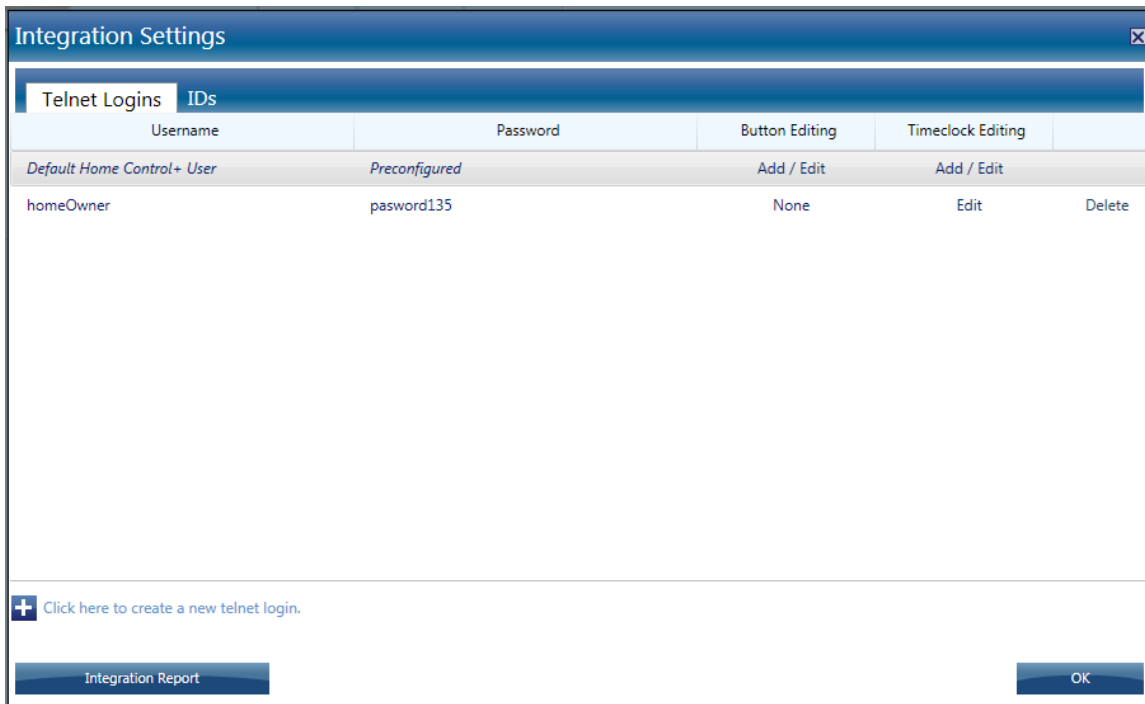
4. On the integration settings page, the "IDs" tab allows you to enable or disable a device for integration - this will limit what keypads and other devices will appear in the app.
- If you don't want to give the homeowner access to every keypad in the space, uncheck the "Enable for Integration" checkbox for the physical keypads you do not want to give access to.
 - You can also add additional keypads for the iPad/iPhone/iPod touch/Android only. Add additional keypads on the Design screen, program, and then do not activate them during Activation of your system. For example, you could create a room called "iPhone keypads" and place all the keypads in that room. The additional devices will count towards your total device count.
 - Only rooms and devices that have "Enable for Integration" checked will appear in the Lutron Home Control+ application. If a room does not have any devices checked, the room will not appear in the Lutron Home Control+ application.



Optionally, you can set up telnet logins for your system to restrict access for certain users. Select the "Telnet Logins" tab of the "Integration Settings" popup and click "Click here to create a new telnet login." Set the username and password fields as desired then set permissions for "Button Editing" and "Timeclock Editing". Click "OK" when done.

NOTE: When a mobile device is connected to the same Local Area Network (LAN) as the RadioRA 2 system, access and control of the RadioRA 2 system may be possible without requiring the user

to input a username and password. Devices running in this manner will assume the permissions defined under the "Default Home Control+ User" account shown below.

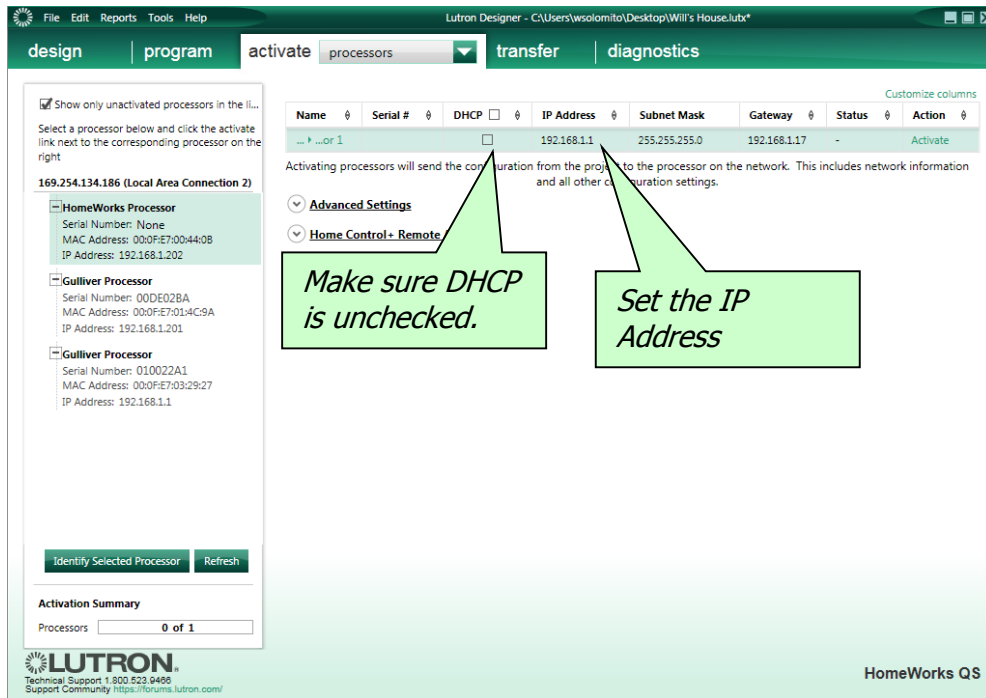


5. Activate your devices.

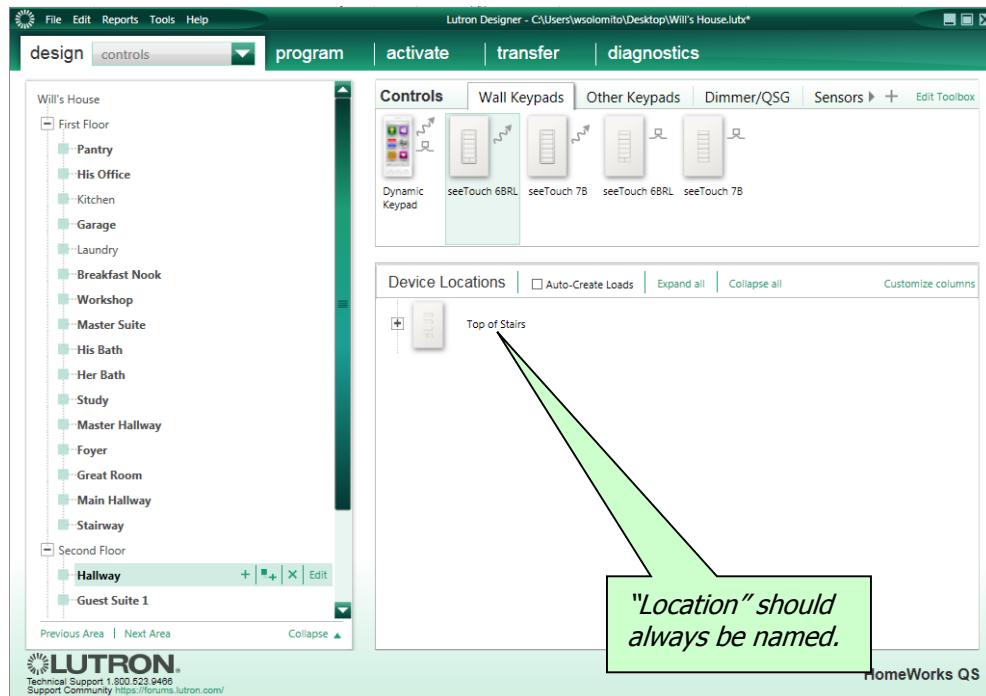
6. Transfer to your system.

HomeWorks QS:

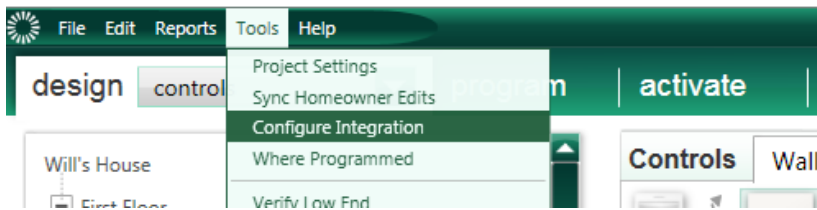
1. Using the latest version of the HWQS PC software, set your IP address for the Processor as static using the checkbox on the "activate" tab. DHCP should be unchecked. It should not be checked because the IP address can be changed by your router after a power outage.



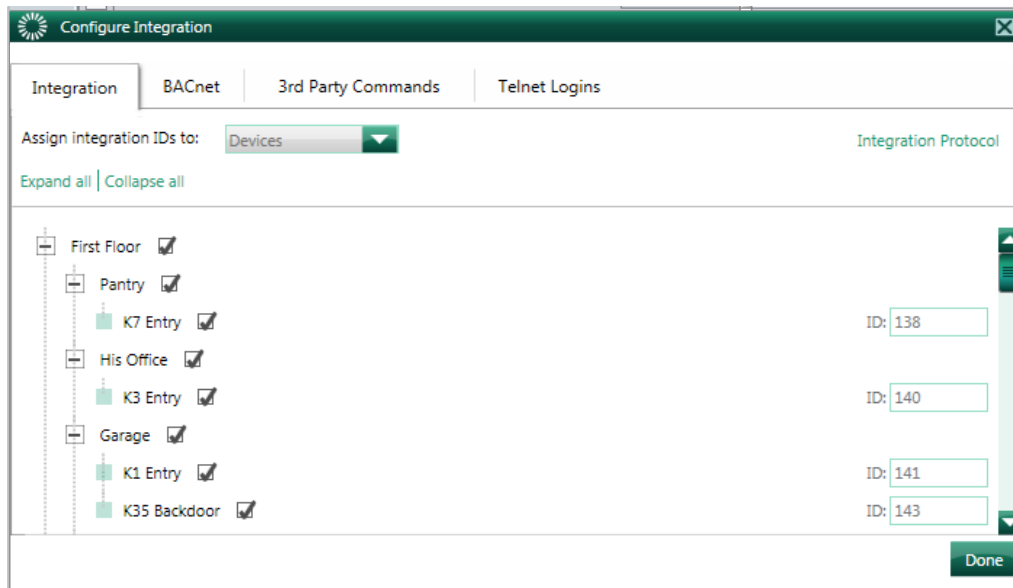
2. Always name the "Device Location" for keypads in a room. The "Device Location" name is the name of each group of keypads that will show on the mobile device. Make sure to name Outputs such as lighting zones and Shade Groups so that the names will show on the mobile device.



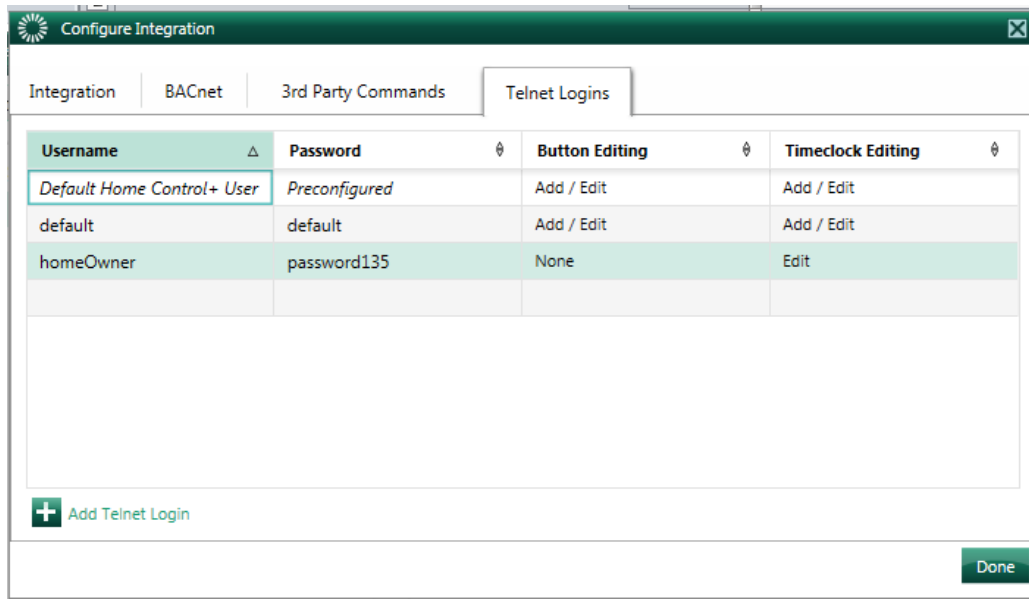
3. Select "Configure Integration" from the "Tools" menu. The "Configure Integration" window will open.



4. The "Integration" tab of the "Configure Integration" window allows you to enable or disable a device for integration - this will limit what keypads/zones/etc. will appear in the app.
- If you don't want to give the homeowner access to every keypad in the space, uncheck the "Enable for Integration" checkbox for the physical keypads you do not want to give access to.
 - You can also add additional keypads for the iPad/iPhone/iPod touch/Android only. Add additional keypads on the Design screen, link assign, program, and then do not activate them during Activation of your system. For example, you could create a room called "iPhone keypads" and place all the keypads in that room. The additional devices will count towards your total device count.
All devices must be link assigned in order to appear in the app.
 - Only Rooms and Devices that are checked will appear in the Lutron Home Control+ application. If a Room does not have any devices checked, the room will not appear in the Lutron Home Control+ application.



Optionally, you can set up telnet logins for your system to restrict access for certain users. Select the "Telnet Logins" tab of the "Configure Integration" popup and click "Add Telnet Login." Set the username and password fields as desired then set permissions for "Button Editing" and "Timeclock Editing". Click "Done" when finished.



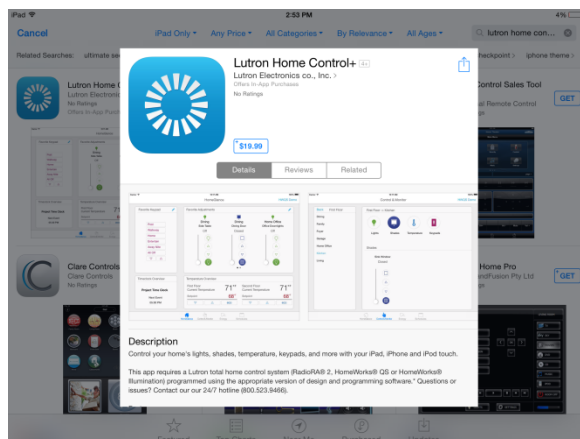
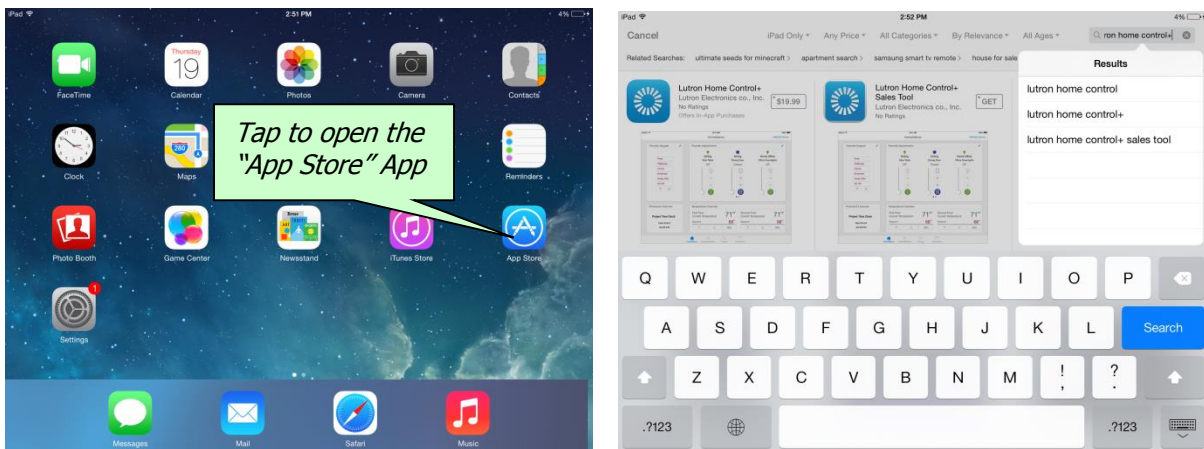
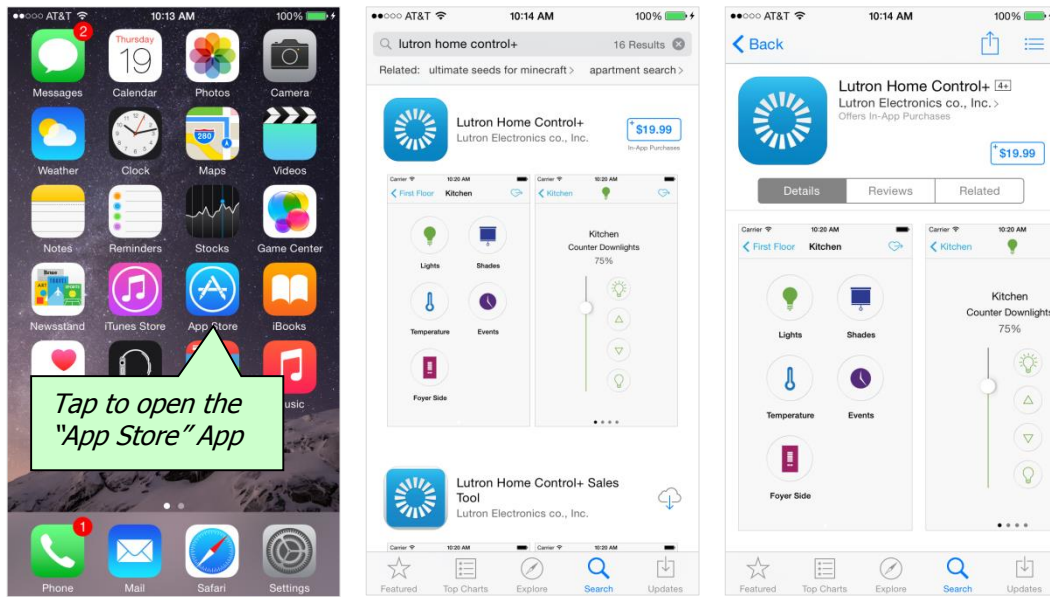
5. Activate your devices.

6. Transfer to your system.

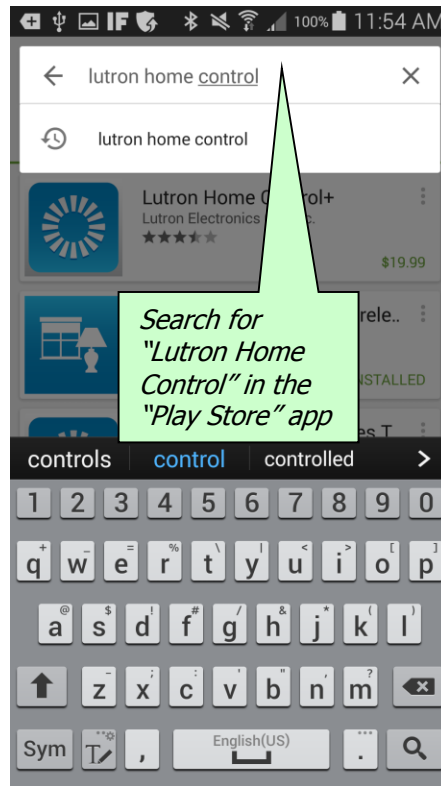
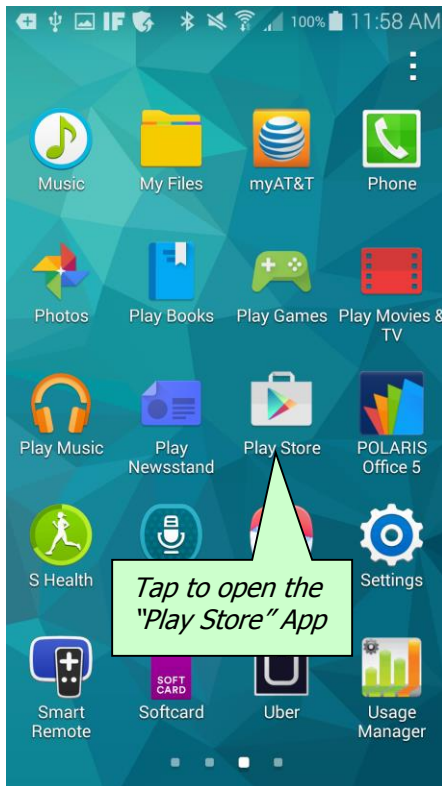
Download the Lutron Home Control+ App

The app can be downloaded from the App Store on iTunes or App Store App. Prior to installation of the App, make sure that your iPhone or iPod Touch is iOS 7.0 or later.

To install the Lutron Home Control+ App, search for "Lutron Home Control" in the App Store and purchase it, just like any other App.



To install the Lutron Home Control+ App on your Android device, search for "Lutron Home Control" using the Google Play™ store app.

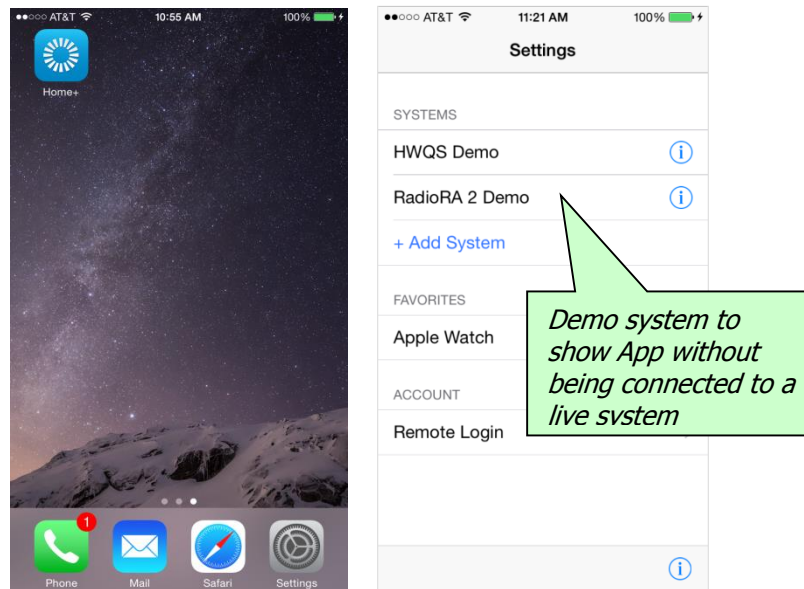


How to use the iPhone/iPod Touch/Android App

Configure the demo system

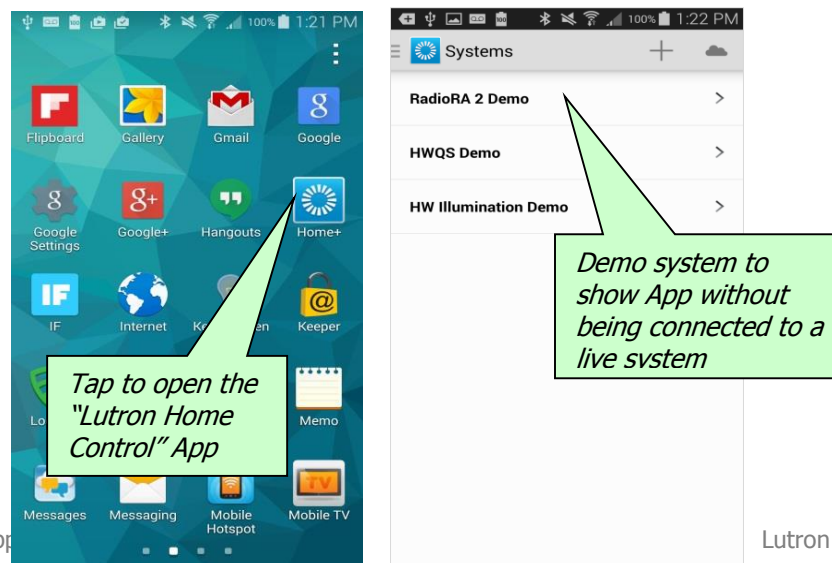
iPhone/iPod Touch:

After downloading the Lutron Home Control+ App from the Apple iTunes App Store, a "Home+" icon will appear on your iPad, iPhone or iPod touch as shown below. The first time you run the application, you will be asked to "add a new System or Use demo system". The demo system is an interactive tool used to illustrate what the App can do without being connected to a live system. It can also be enabled or disabled under the Home+ app settings found in the iOS device's "Settings" app.



Android:

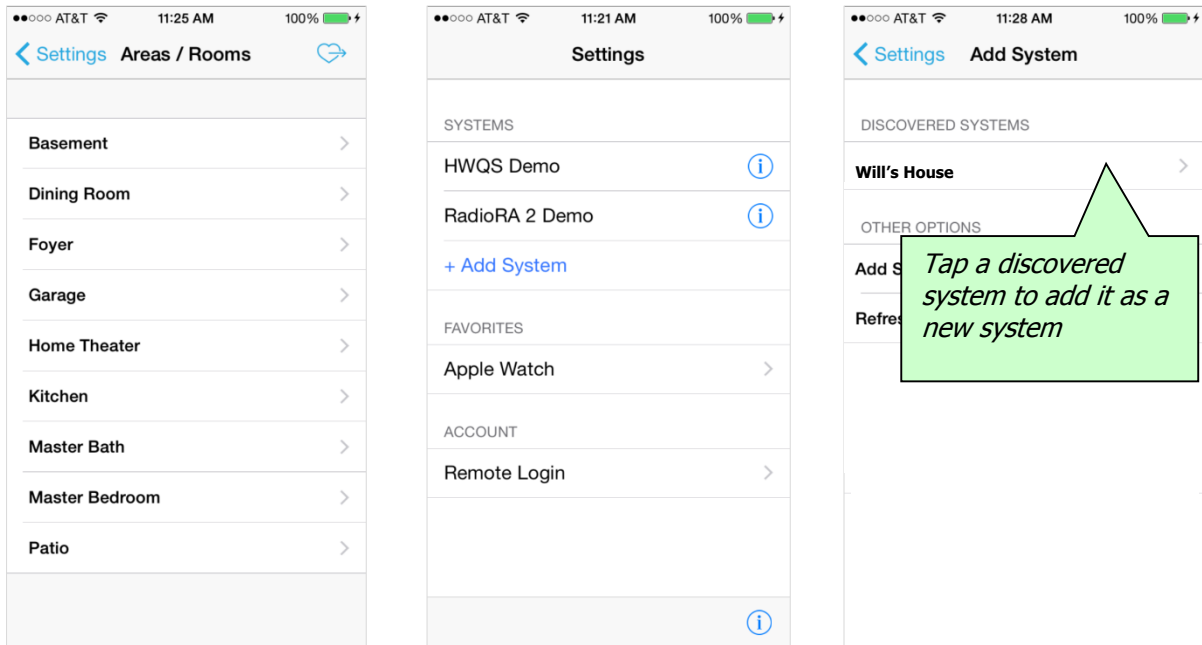
After downloading the Lutron Home Control+ App on Google Play, a "Home+" icon will appear in your "application drawer" on your Android phone as shown below. After accepting the software license, you will be shown the "Systems" screen where you can select a demo system or add a system. The demo system is an interactive tool used to illustrate what the App can do without being connected to a live system. The demo system(s) can also be hidden in the Settings with the "Show RadioRA 2 Demo", "Show HWQS Demo", and "Show HWI Demo" checkboxes.



Edit Systems

iPhone/iPod Touch:

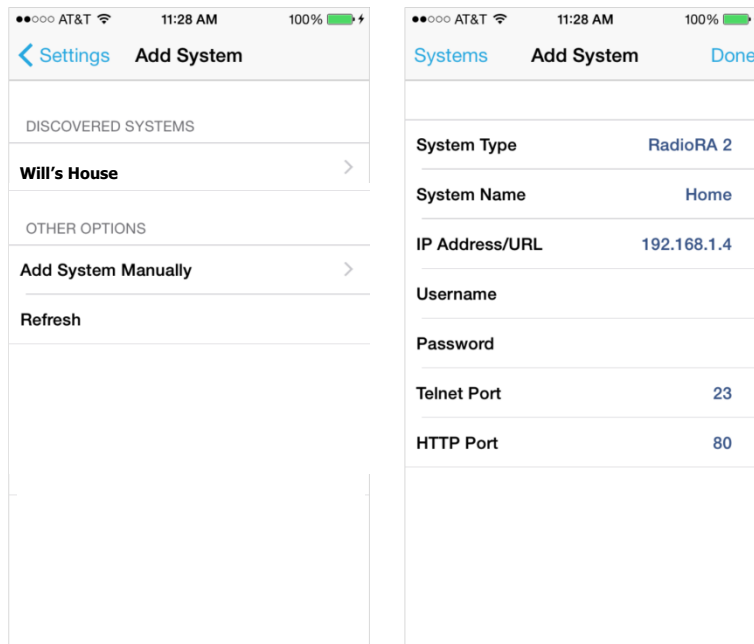
On the "Areas/Rooms" screen, you can navigate to the "Settings" screen by tapping "Settings" in the top left corner. Under the "Systems" heading, you will see a list of the systems in your iPhone/iPod. You can add multiple systems to your iPhone/iPod touch in addition to the demo system. Tap "Add System" to add a system to your device.



After tapping "Add System", the App will try to discover any systems connected via your network¹ to this device. Select the system to add, then on the next screen select "Only access at home" For system access from outside the home, over the Internet, see the section later in this document called "Advanced: Set up your home for access when away".

¹ In order to make the Wi-Fi connection, you will need to know the SSID and the type of security settings being used on the wireless network. The options available are None, WEP encryption and WPA encryption. If using one of the encryption options, you will need to know the encryption key. Consult the individual who set up the wireless router for these settings.

If the network does not allow for automatic discovery, you can add the system manually by selecting "Add System Manually" from the "Add System" screen. To configure a system with this method, the IP address will need to be set to the static IP address of the RadioRA 2 Main Repeater or HWQS Processor. This IP address must match the settings above the "Find Main Repeater" button in the RadioRA 2 PC software or the "activate" tab of the HWQS PC software.

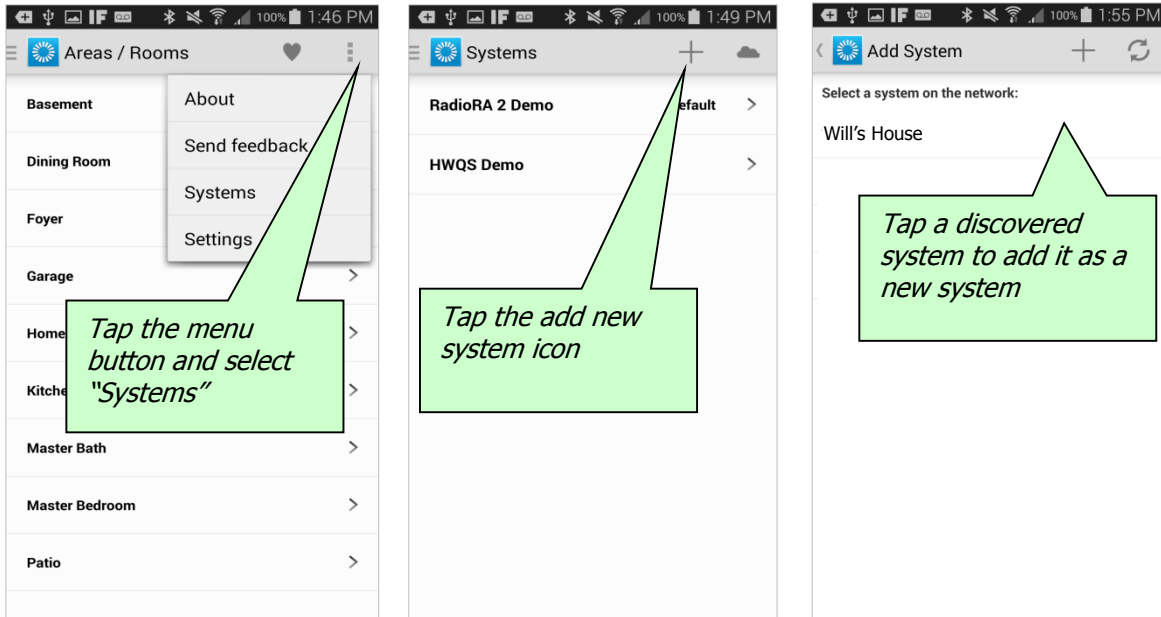


The next items to configure on this screen are the System Name, Username, and Password that the application will use to make a connection to the system. These fields must match (with exact capitalization) one of the Telnet logins defined in the software. You can return to this screen for any system by tapping the info icon next to it on the "Settings" screen. Save your settings by tapping the "Done" button to return to the previous screen.

At this point, the application will try to establish a connection (using TELNET) with the system. If a connection is established, the application will then download all the information it needs from the system (using HTTP). If you receive an error message, the iPhone/iPod failed to connect to the system. Press retry, and if the iPhone/iPod still fails to connect, check that your device is on the same network as your Lutron system. Then, enter the IP address of the RadioRA 2 Main Repeater/HWQS Processor into the address bar of your device's web browser. If there is a Lutron login screen, they are on the same network, otherwise double-check the settings of both the iPhone/iPod and the system. Also, make sure that the iPhone/iPod is successfully connected to the system's Wi-Fi network and your network settings are consistent including your subnet masks. If you still cannot connect, from the "Settings" screen, tap the information icon in the lower right corner, then tap "Email Feedback". Explain your issue in the body of the email and tap send. This will send information to Lutron Technical Support, who will assist you in solving the problem.

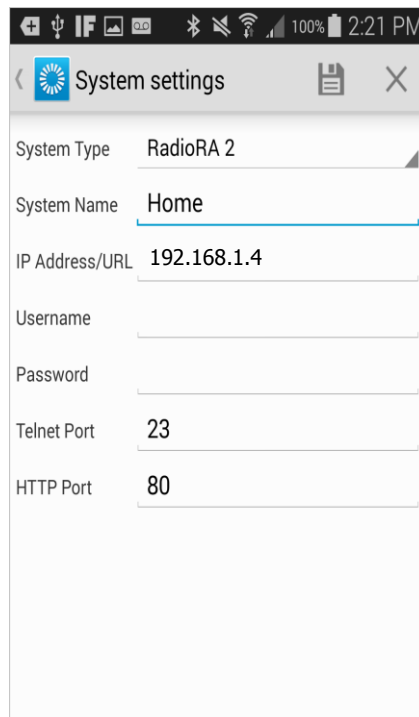
Android:

You can navigate to the "Systems" screen by pressing the Menu button in the upper right hand corner and selecting "Systems". You will see a list of the systems added to your Android device. You can add multiple systems to your Android device in addition to the demo system by pressing the "+" icon. The App will then try to discover any systems connected via your network² to this device. Then you select the system you want to connect to the device from the list of discovered systems.



² In order to make the Wi-Fi connection, you will need to know the SSID and the type of security settings being used on the wireless network. The options available are typically None, WEP encryption and WPA encryption. If using one of the encryption options, you will need to know the encryption key. Consult the individual who set up the wireless router for these settings.

If the network does not allow for automatic discovery, you can add the system manually by selecting "Add System Manually" from the "Add System" screen. To configure a system with this method, the IP address will need to be set to the static IP address of the RadioRA 2 Main Repeater or HomeWorks QS Processor. This IP address must match the settings above the "Find Main Repeater" button in the RadioRA 2 PC software or the "activate" tab of the HomeWorks QS PC software. For system access from outside the home, over the Internet, see the section later in this document called "Advanced: Set up your home for access when away".



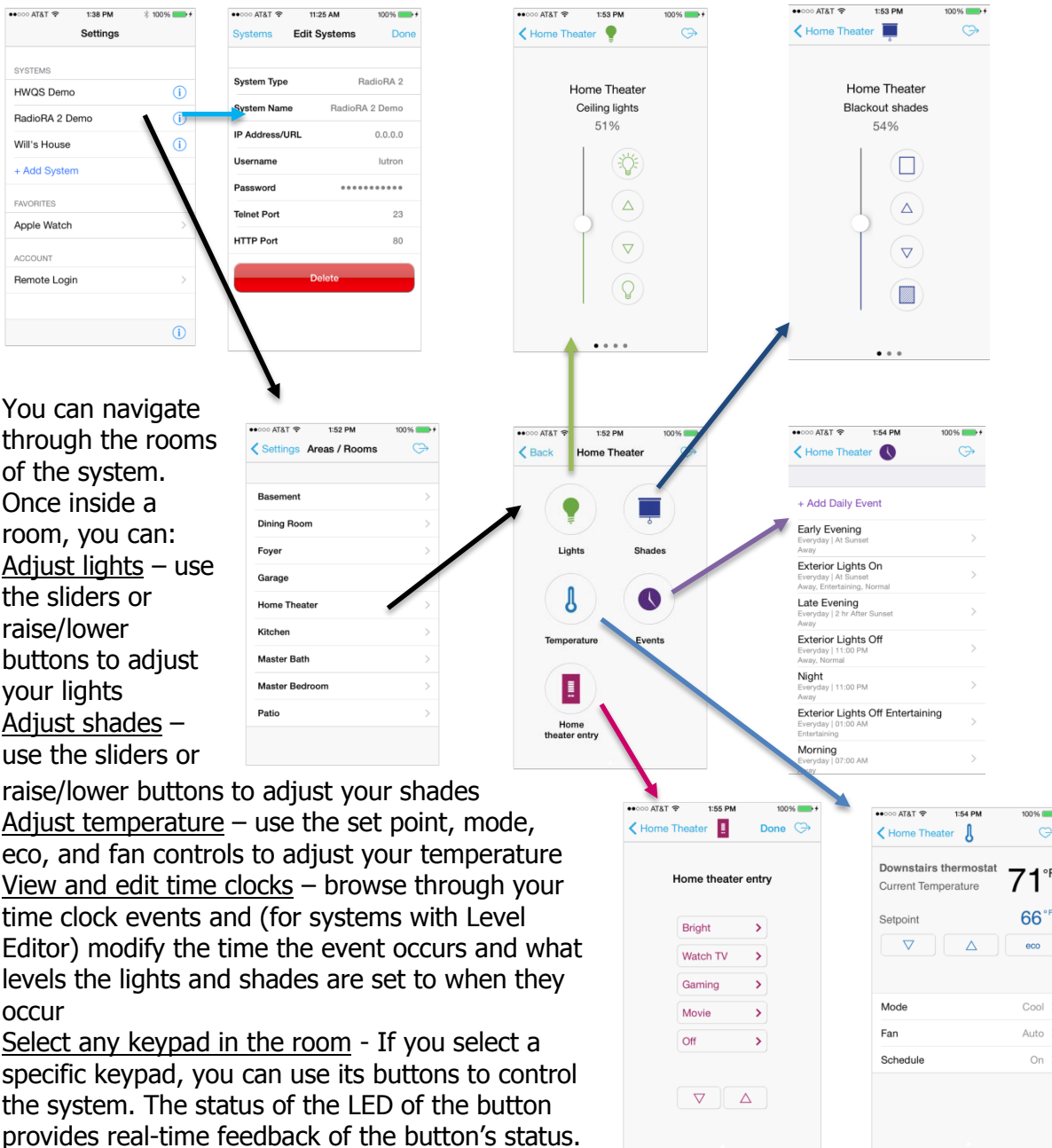
The next items to configure are the System Name, Username, and Password that the application will use to make a connection to the system. These fields must match (with exact capitalization) one of the Telnet logins defined in the software. This newly added system will be set as the default system. The default system is only applicable when multiple systems are on your Android. Save your settings by tapping the "Save" button.

At this point, the application will try to establish a connection (using TELNET) with the system. If a connection is established, the application will then download all the information it needs from the system (using HTTP). If you receive an error message, the Android failed to connect to the system. Press retry, and if the Android still fails to connect, check that it is on the same network as your Lutron system. Then, enter the IP address of the RadioRA 2 Main Repeater/HWQS Processor into the address bar of your device's web browser. If there is a Lutron login screen, they are on the same network, otherwise double-check the settings of both the Android and the system. Also, make sure that the Android is successfully connected to the system's Wi-Fi network and your network settings are consistent including your subnet masks. If you still cannot connect, select a demo system, then select the menu in the upper right corner and tap "Send Feedback". Explain your issue in the body of the email and tap send. This will send information to Lutron Technical Support, who will assist you in solving the problem.

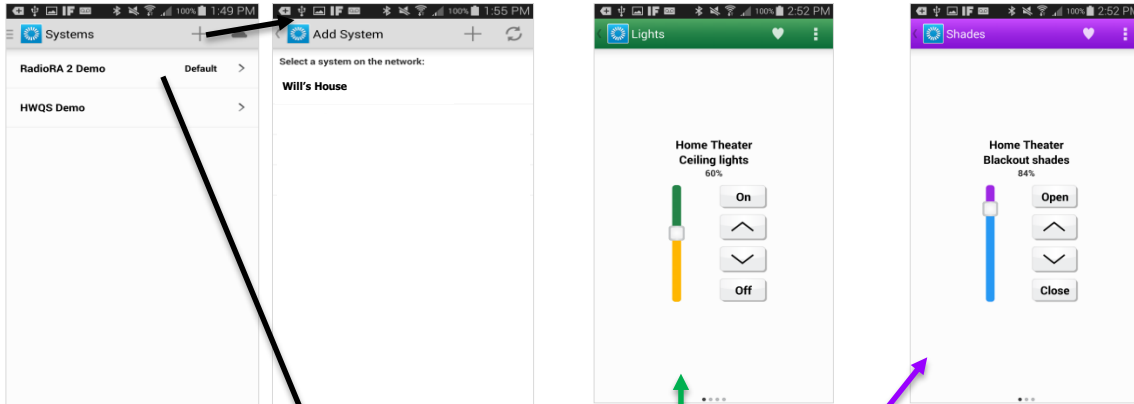
Navigating the app

After a successful connection is established, and the iPhone, iPod touch, or Android extracts the information it needs from the Lutron system, you are ready to begin using the iPhone/iPod/Android for control.

iPhone/iPod Touch:



Android:



You can navigate through the rooms of the system. Once inside a room, you can:

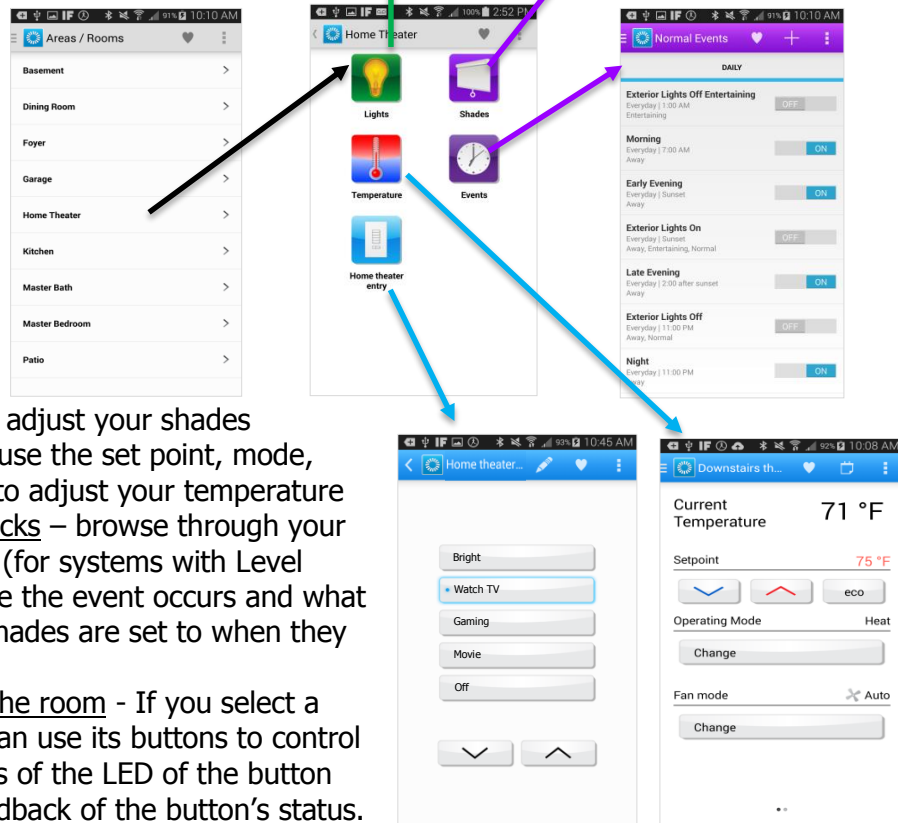
Adjust lights – use the sliders or raise/lower buttons to adjust your lights
Adjust shades – use the sliders or

raise/lower buttons to adjust your shades

Adjust temperature – use the set point, mode, eco, and fan controls to adjust your temperature

View and edit time clocks – browse through your time clock events and (for systems with Level Editor) modify the time the event occurs and what levels the lights and shades are set to when they occur

Select any keypad in the room - If you select a specific keypad, you can use its buttons to control the system. The status of the LED of the button provides real-time feedback of the button's status.

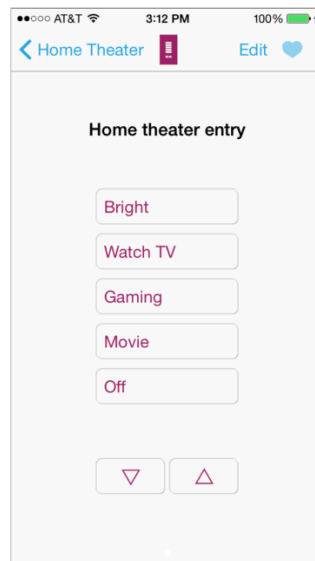
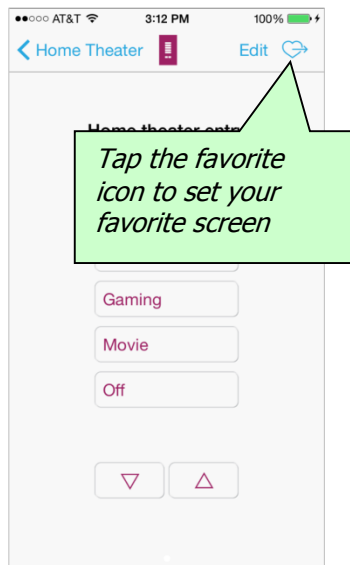


Set up your Favorite keypad, light, or shade for iPhone/iPod Touch/Android

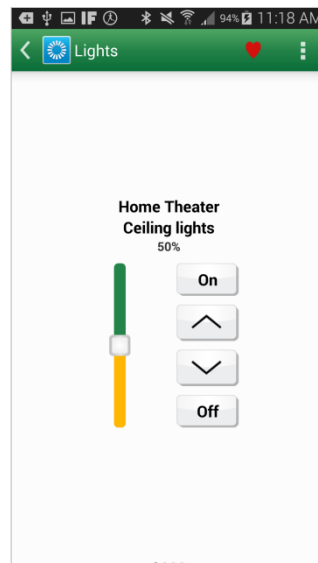
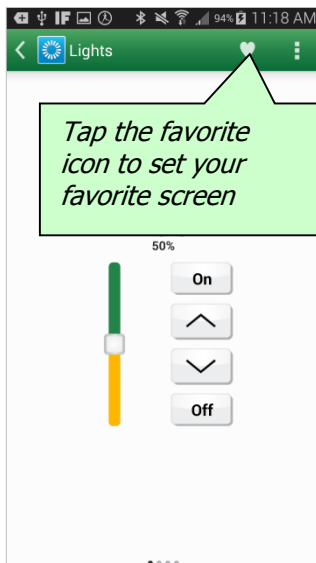
You can select a screen in the app that will be the Favorite. Once you are on any screen, tap the Favorite button at the top right of the screen to set the current screen as the Favorite. If your favorite screen is already set, you will be asked if you want to override it with the new one.

Pressing and holding the Favorite button will overwrite the previous Favorite.

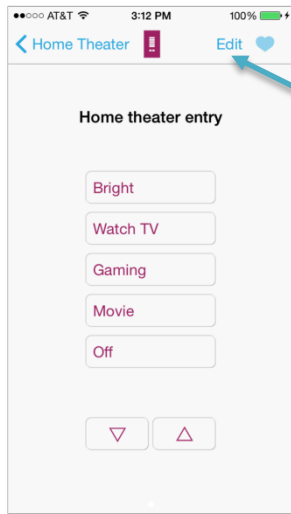
iPhone/iPod Touch:



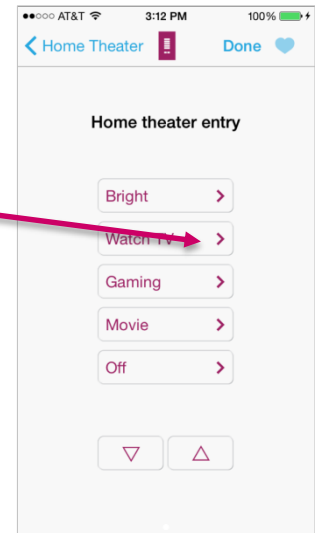
Android:



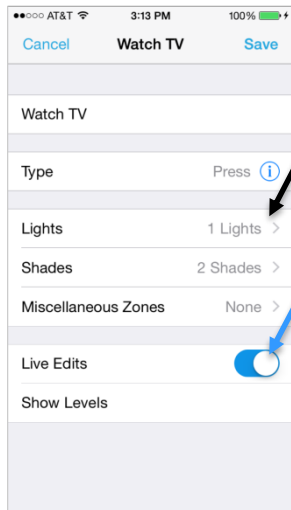
Using Level Editor to change programming on the iPhone/iPod Touch/Android



1. Tap the "Edit" icon at the top of the screen to show the disclosure buttons for the keypad.



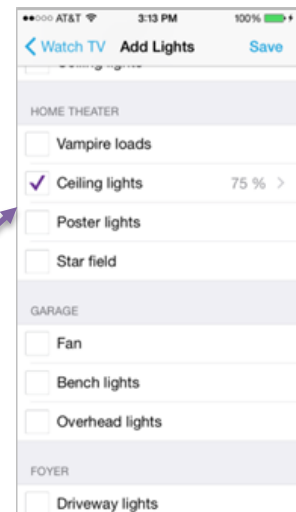
2. Tap the disclosure button on the right side of the button you want to edit using the Level Editor.



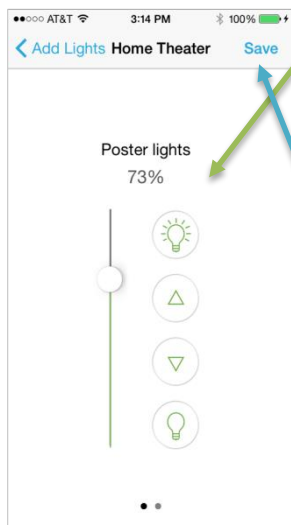
3. Select the type of output you'd like to control with this button, and then select the area the output is in.

If "Live Edits" is set to "On" the lights and shades will update real-time as you change the values

4. After selecting an area, check the zones to control with the keypad, and select a zone to adjust the level. Adjusting the level will automatically check that zone.



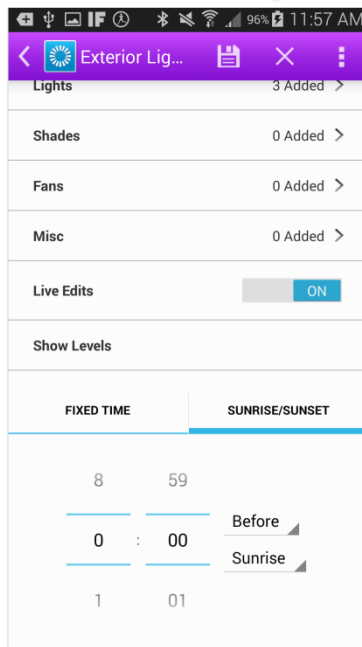
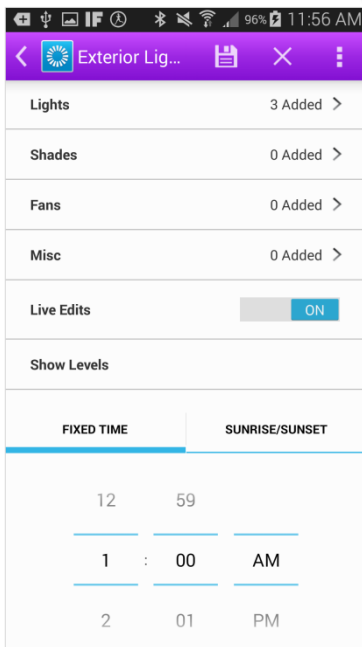
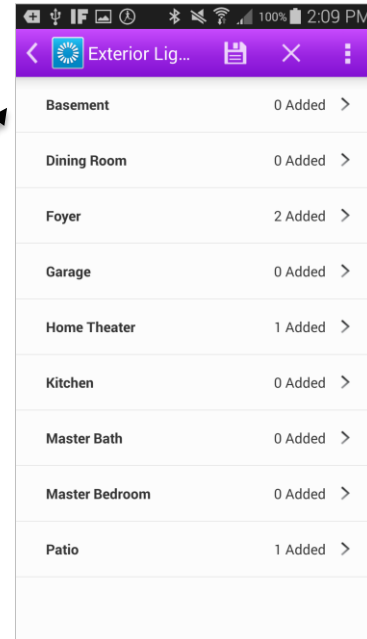
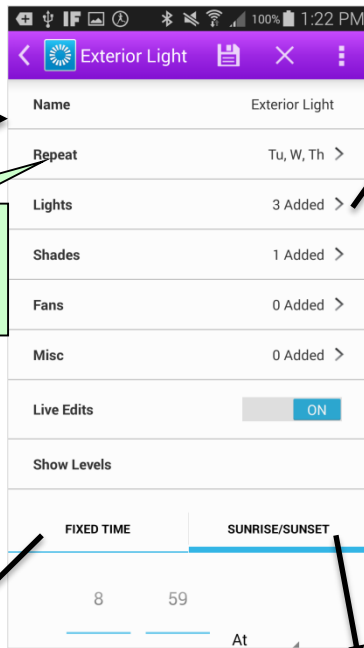
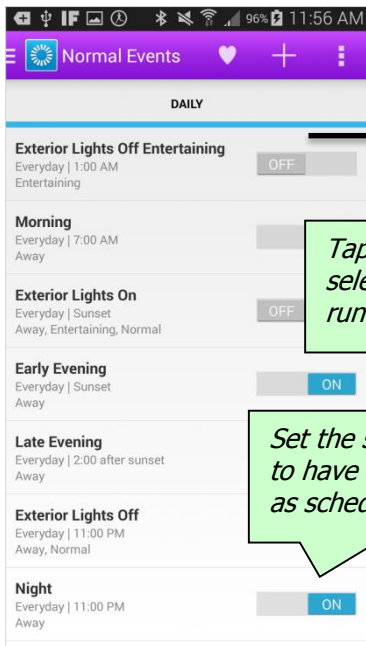
5. Set the level for the zone using the slider and raise/lower controls.



6. Swipe to the left to edit Fade and Delay times

7. Tap the "Save" icon to save the changes to the RadioRA2 Main Repeater/HomeworksQS Processor.





Tapping an output type will open the area tree to allow you to select zone levels for this event. This is identical to the keypad button Level Editor so refer to the previous page starting at step 3 for details.

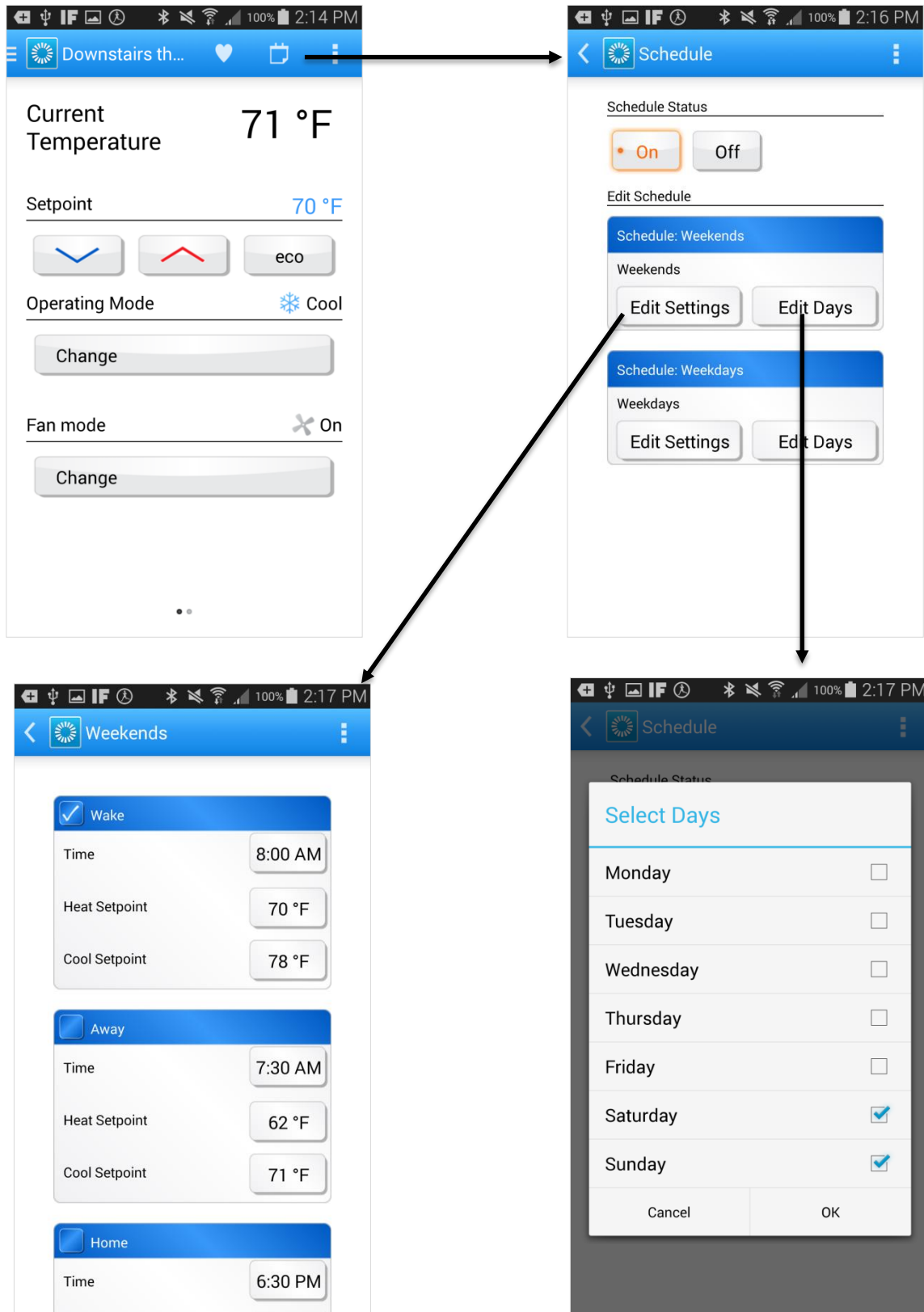
Tapping "Fixed Time" will allow you to set the event to occur at a specific time. When you are finished, tap "Save" to update the event time on the RadioRA 2 Main Repeater/HomeWorks QS Processor

Tapping "Sunrise/Sunset" allow you to set the event to occur at a time before or after sunrise/sunset. When you are finished, tap "Save" to update the event time on the RadioRA 2 Main Repeater/ HomeWorks QS Processor

Below are certain scenarios that will affect how keypad button or event zones can be edited.

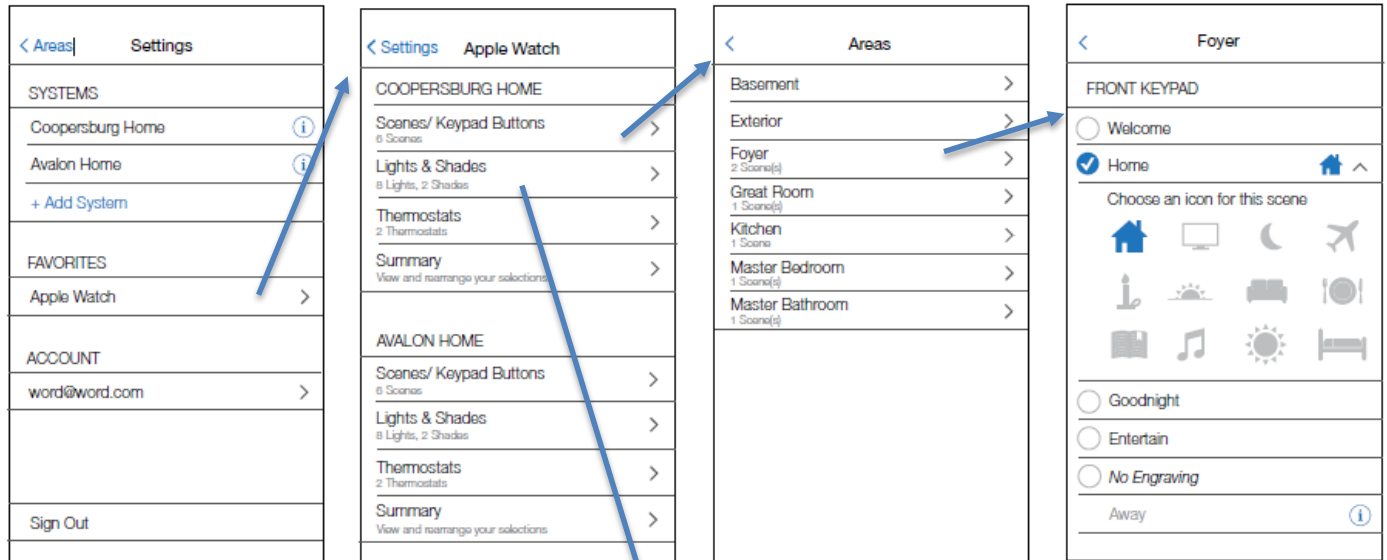
Scenario	Can Add/ Remove Zones	Can Edit Zone Levels	Editor Programming View
Zone Type is CCO Maintained	No	No	Zone is disabled in zone list. Can view whether the zone is affected/unaffected by the button/event
Zone Type is DMX Single Channel	No	Yes	Zone is only enabled in zone list if it is affected. Can view whether the zone is affected/unaffected by the button/event
Zone is Locked	No	No	Can view whether the zone is affected/unaffected by the button/event
Keypad is Locked	No	No	Cannot view button programming
Button/Event has conditional programming	No	No	Cannot view button/event programming
Button/Event has a Shared Scene	No	Yes	Can view/change zone programming
Button/Event has an Area Scene	No	Yes	Can view/change zone programming
Keypad is Homeowner Keypad	Yes	Yes	Can view and edit programming

From the temperature screen, you can also view and edit your temperature schedules. Temperature schedules only appear in the app if they have been configured in the PC software and transferred to the RadioRA 2 Main Repeater/HWQS Processor.

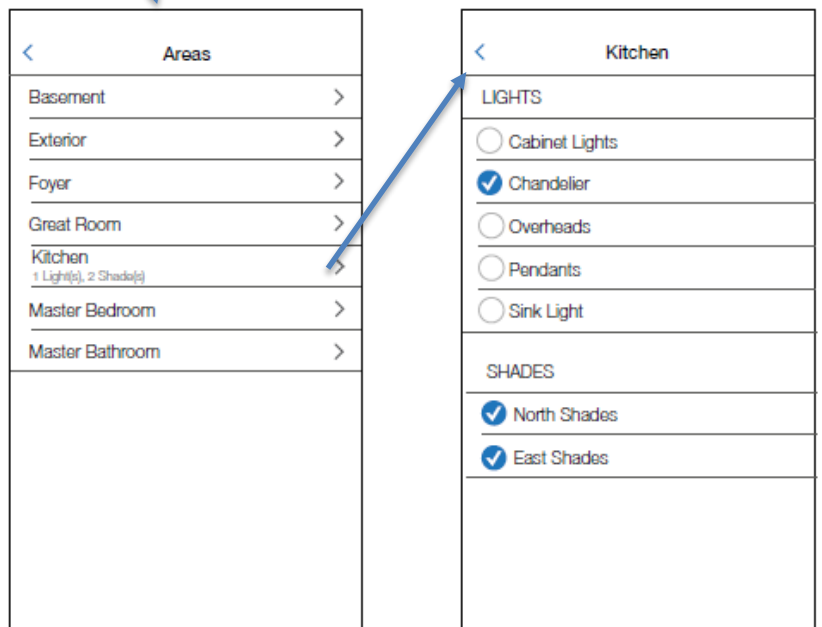


Setting up the Apple Watch

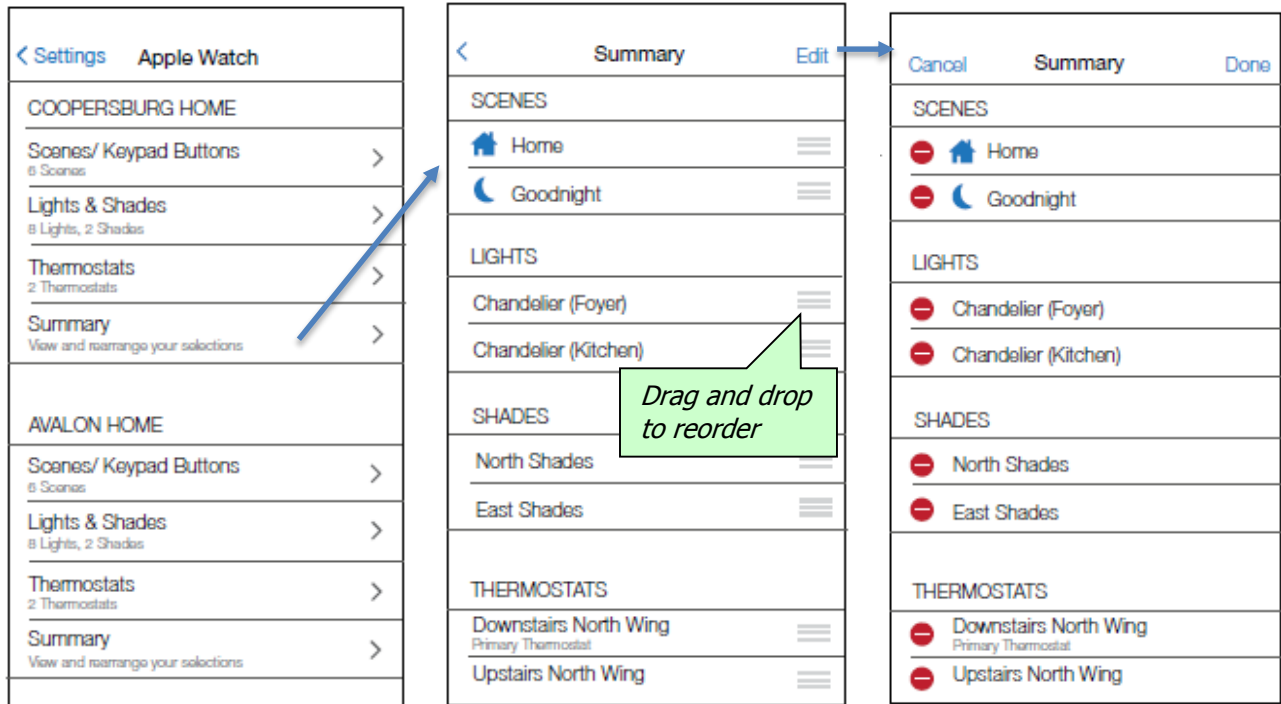
After a successful connection is established, and the iPhone extracts the information it needs from the Lutron system, you are ready to begin configuring the Apple Watch for control of the system. Access this configuration from the "Settings" screen and select "Apple Watch" to bring up a list of connected systems with configuration options.



From the "Apple Watch" screen, you can select what you want to appear on your Apple Watch. Selecting "Scenes/Keypad Buttons" will allow you to choose a scene and select an icon to display with it on the watch. Tapping on a scene will make the icon tray expand for that scene. You can also add individual light, shade, or HVAC zones. This process is the same as adding a scene, however individual zones do not have an icon associated with them.

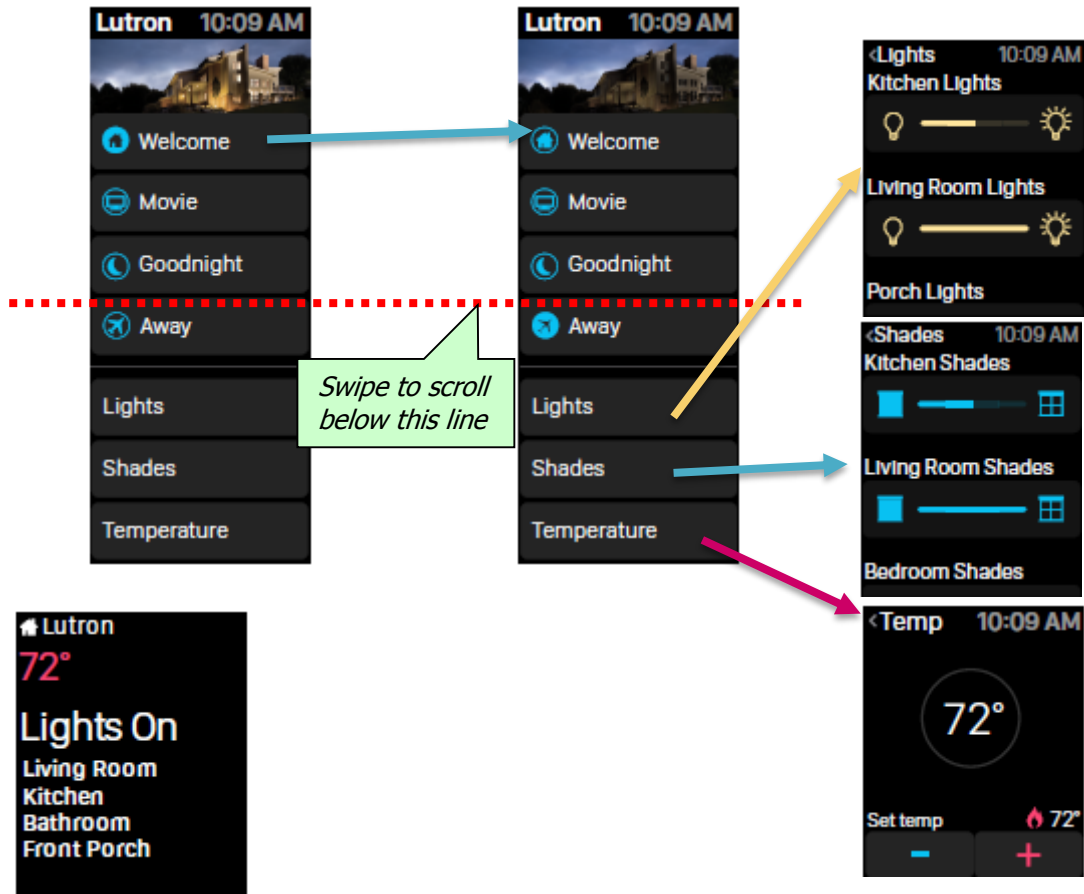


To view or rearrange the list of Scenes/Keypad Buttons, Lights, Shades, and Thermostats, tap on "Summary" on the "Apple Watch Screen". The "Summary" screen separates the controls you've added by type and lists them in the order that they will appear on the Apple Watch. To reorder them, tap and hold the reordering control to the right of the control name to drag and drop the individual controls. Types cannot be reordered and controls cannot be moved to different types. To delete a control, tap "Edit" on the "Summary" screen, then tap the minus "-" icon and tap "Delete". Tap "Done" to finish deleting, or "Cancel" to undo deletes.



Navigating Apple Watch

After selecting a system for the Apple Watch, you can: activate scenes, select "Lights" to adjust light zones, select "Shades" to adjust shade zones, select "Temperature" to adjust HVAC zones, and view the status of your primary thermostat and lights in a glance.



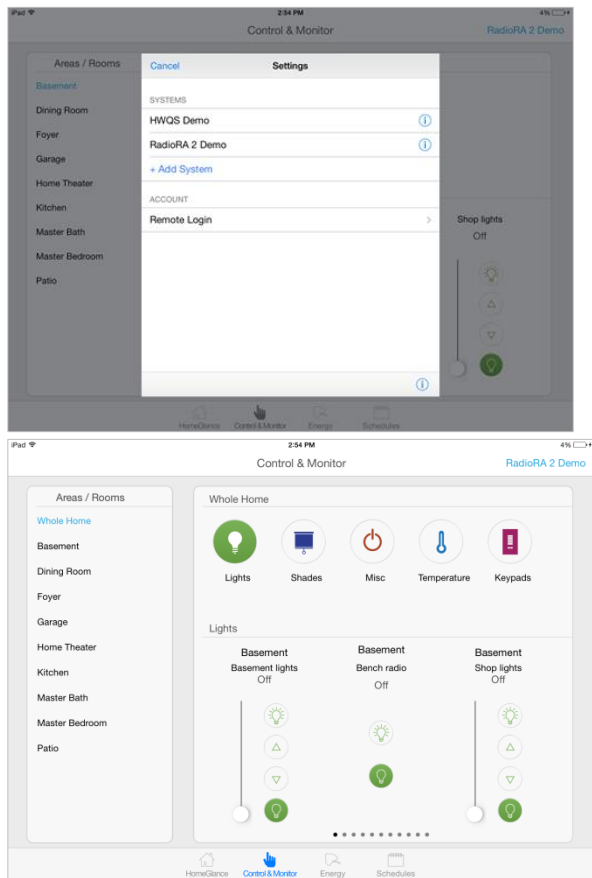
If the Apple Watch does not detect a system, verify that you are able to connect to your Lutron system from your iPhone using the steps above.

How to Use the iPad and Android Tablet App

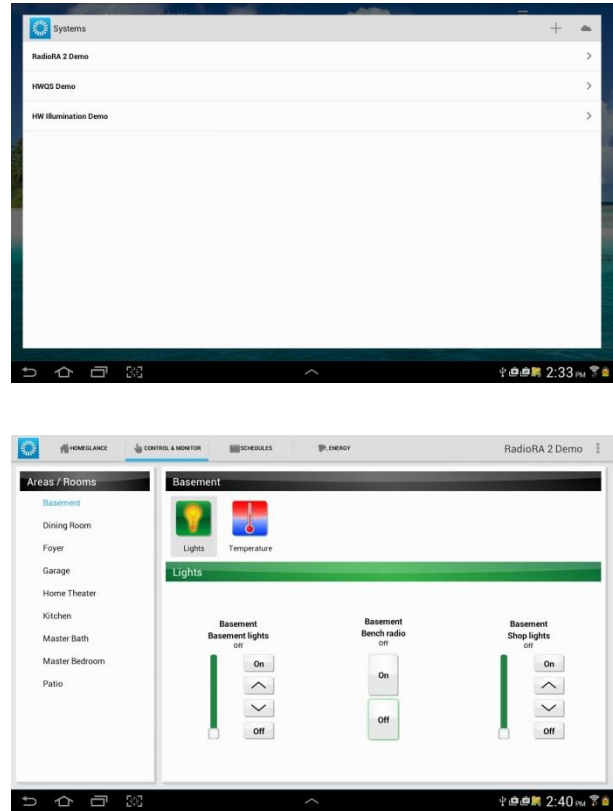
Configure the Demo System

When you first launch the tablet application, you will be shown a list of Demo projects. Select the one corresponding to your system ("RadioRA 2 Demo" or "HWQS Demo") to allow you to use the application's features without having to connect to an actual system.

iPad:



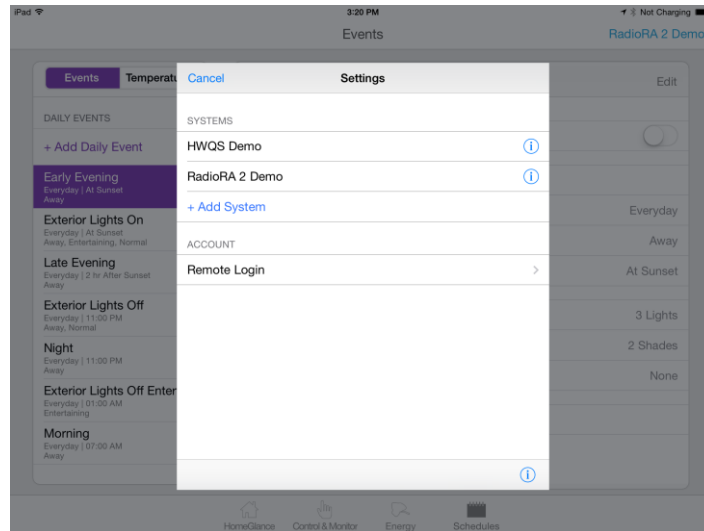
Android:



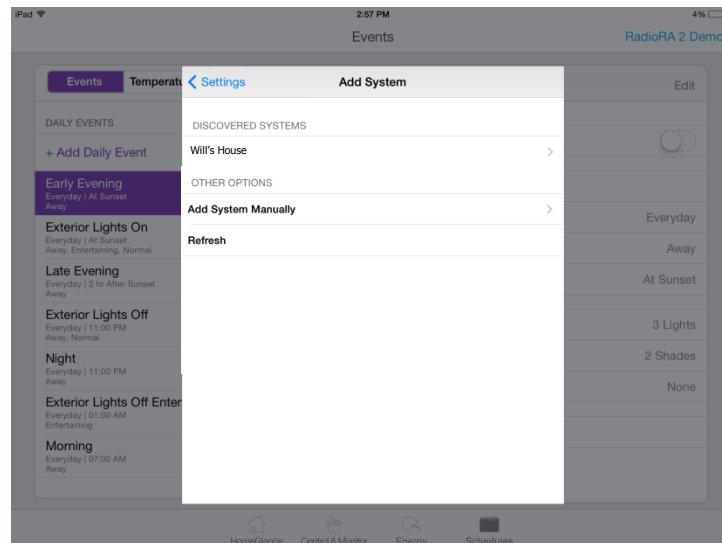
Changing Systems

iPad:

From any screen in the iPad you can touch the system name in the upper right corner of the screen. You will see a list of the systems in your iPad. You can add multiple systems to your iPad in addition to the demo system. From the "Systems" dialog, click the "Add System" button in the list to add a new system.

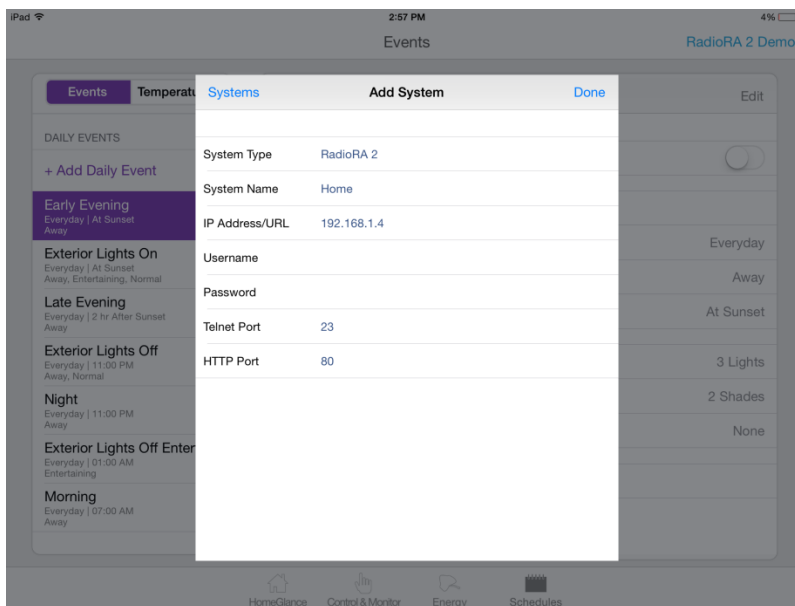


After tapping the Add New System button, the App will try to discover any systems connected via your network³ to this device. Then you select the system you want to connect to the device from the list of discovered systems.



³ In order to make the Wi-Fi connection, you will need to know the SSID and the type of security settings being used on the wireless network. The options available are typically None, WEP encryption and WPA encryption. If using one of the encryption options, you will need to know the encryption key. Consult the individual who set up the wireless router for these settings.

If the network does not allow for automatic discovery, you can add the system manually by selecting "Add System Manually" from the "Add System" screen. To configure a system with this method, the IP address will need to be set to the static IP address of the RadioRA 2 Main Repeater or HWQS Processor. This IP address must match the settings above the "Find Main Repeater" button in the RadioRA 2 PC software or the "activate" tab of the HWQS PC software.

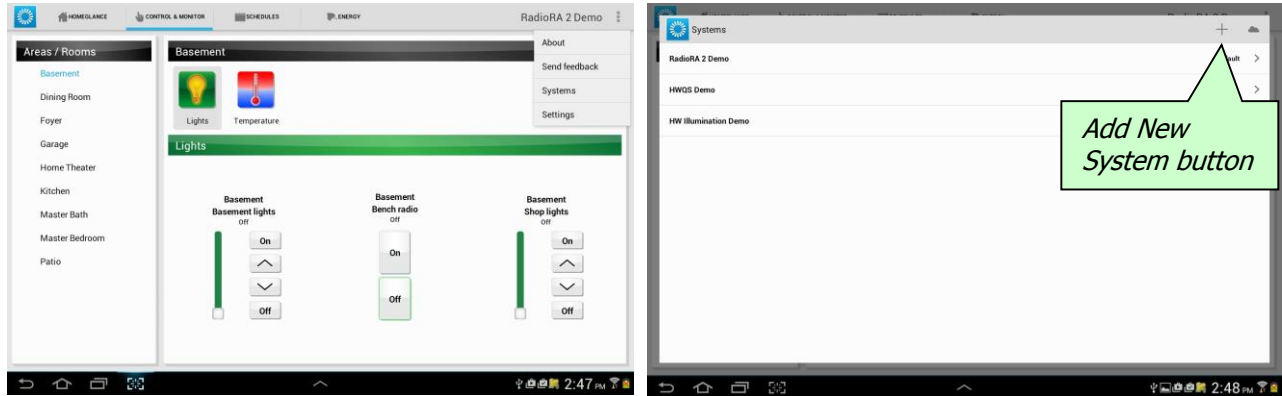


The next items to configure on this screen are the System Name, Username, and Password that the application will use to make a connection to the system. These fields must match (with exact capitalization) one of the Telnet logins defined in the software. You can return to this screen for any system by tapping the info icon next to it on the "Settings" screen. Save your settings by tapping the "Done" button to return to the previous screen.

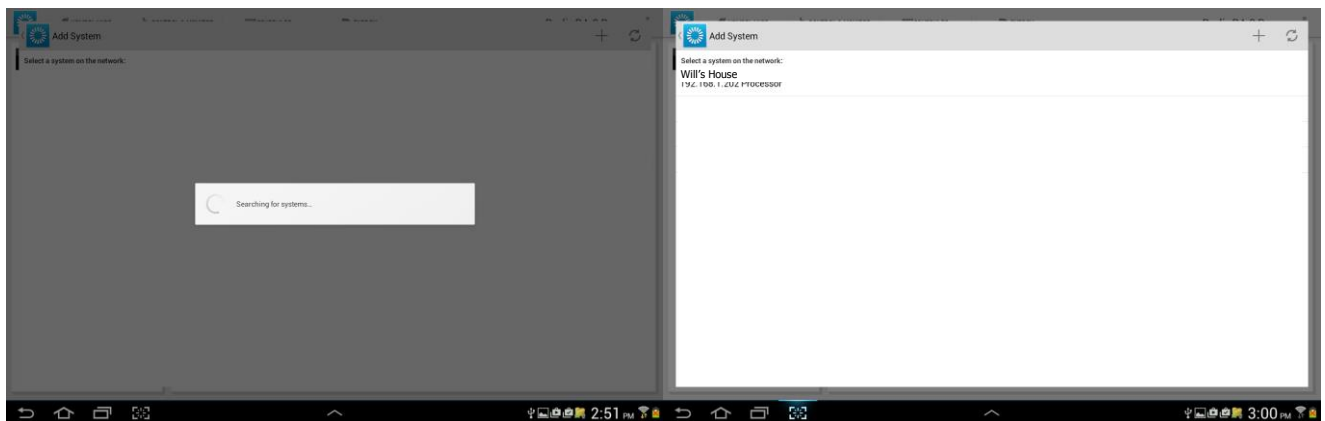
At this point, the application will try to establish a connection (using TELNET) with the system. If a connection is established, the application will then download all the information it needs from the system (using HTTP). If you receive an error message, the iPad failed to connect to the system. Press retry, and if the iPad still fails to connect, check that it is on the same network as your Lutron system. Then, enter the IP address of the RadioRA 2 Main Repeater/HWQS Processor into the address bar of your device's web browser. If there is a Lutron login screen, they are on the same network, otherwise double-check the settings of both the iPad and the system. Also, make sure that the iPad is successfully connected to the system's Wi-Fi network and your network settings are consistent including your subnet masks. If you still cannot connect, from the "Settings" screen, tap the information icon in the lower right corner, then tap "Email Feedback". Explain your issue in the body of the email and tap send. This will send information to Lutron Technical Support, who will assist you in solving the problem.

Android:

From any screen on your Android Tablet you can tap the menu button in the upper right corner of the screen and select "Systems." You will see a list of the systems on your Android Tablet. You can add multiple systems to your Android Tablet in addition to the demo system. Press the Add New System button ("+").



After tapping the Add New System button, the App will try to discover any systems connected via your network⁴ to this device. Then you select the system you want to connect to the device from the list of discovered systems.



Optionally, if you'd like to connect to a system with a specific telnet login, you can select the "+" icon from the "Add System" screen to access specific system settings. To configure a system with this method, the IP address will need to be set to the static IP address of the RadioRA 2 Main Repeater or HomeWorks QS Processor. This IP address must match the settings above the "Find Main Repeater" button in the RadioRA 2 PC software or the "activate" tab of the HomeWorks QS PC software. For system access from outside the home, over the Internet, see the section later in this document called "Advanced: Set up your home for access when away".

⁴ In order to make the Wi-Fi connection, you will need to know the SSID and the type of security settings being used on the wireless network. The options available are typically None, WEP encryption and WPA encryption. If using one of the encryption options, you will need to know the encryption key. Consult the individual who set up the wireless router for these settings.



The next items to configure are the System Name, Username, and Password that the application will use to make a connection to the system. These fields must match (with exact capitalization) one of the Telnet logins defined in the software. This newly added system will be set as the default system. The default system is only applicable when multiple systems are on your Android. Save your settings by tapping the “Save” button.

At this point, the application will try to establish a connection (using TELNET) with the system. If a connection is established, the application will then download all the information it needs from the system (using HTTP). If you receive an error message, the Android device failed to connect to the system. Press retry, and if the Android device still fails to connect, check that it is on the same network as your Lutron system. Then, enter the IP address of the RadioRA 2 Main Repeater/HWQS Processor into the address bar of your device’s web browser. If there is a Lutron login screen, they are on the same network, otherwise double-check the settings of both the Android device and the system. Also, make sure that the Android device is successfully connected to the system’s Wi-Fi network and your network settings are consistent including your subnet masks. If you still cannot connect, select a demo system, then select the menu in the upper right corner and tap “Send Feedback”. Explain your issue in the body of the email and tap send. This will send information to Lutron Technical Support, who will assist you in solving the problem.

Navigating the iPad and Android Tablet App

After a successful connection is established, and the iPad or Android Tablet extracts the information it needs from the Lutron system, you are ready to begin using the iPad or Android Tablet for control.

Selecting Screens:

To select screens in the iPad app touch the screen icons at the bottom center of the app. To select screens on the Android touch the screen icons at the top left of the app.



HomeGlance:

Favorite Keypad – One keypad from the system that is always present on this screen

Favorite Adjustments – A configurable list of zones

Time clock Overview – Shows time clock mode and next event

Temperature Overview – Quick view of the temperature zones in the system

Control & Monitor:

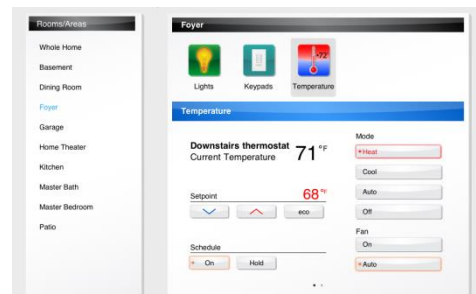
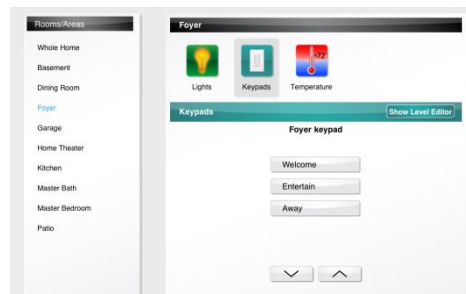
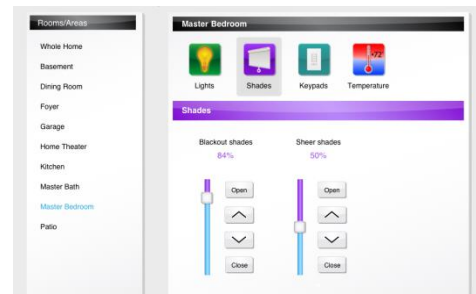
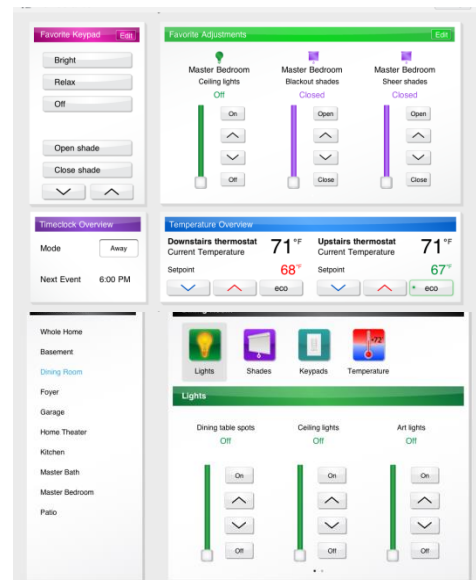
You can select Whole Home or an individual room on the left. Then choose one of the mode icons in the upper portion of the screen. The modes allow you to do the following:

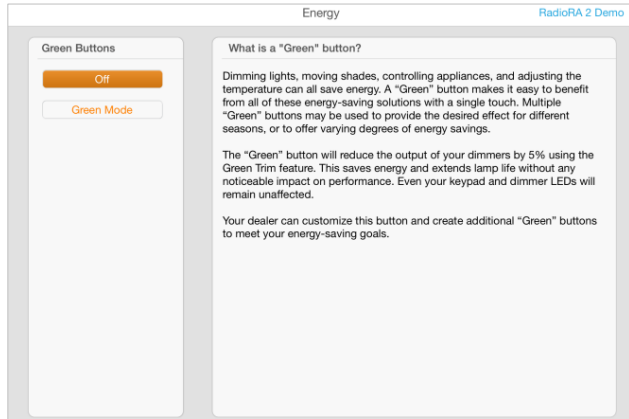
Lights – Use the sliders or raise/lower buttons to adjust your lights

Shades – Use the sliders or raise/lower buttons to adjust your shades

Keypads – Swipe through the keypads in the room or home. For the visible keypad, you can use its buttons to control the system. The status of the LED of the button provides real-time feedback of the button's status.

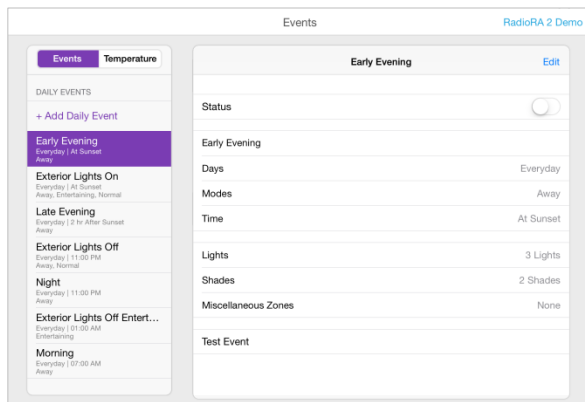
Temperature – Swipe through the temperature zones in the home. Change the system mode, set points, fan mode, schedule override, and eco mode using the controls.





Energy:

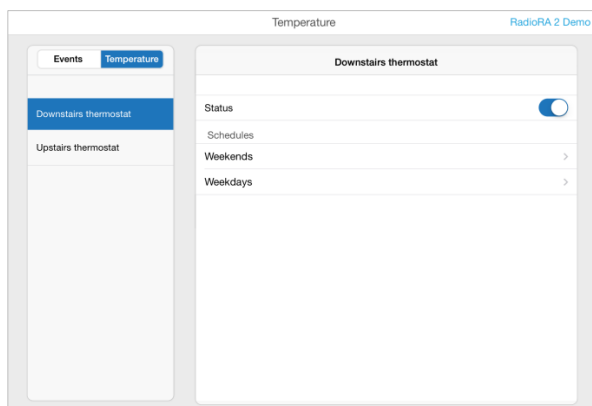
Green Buttons that were programmed in the system will show up on the Energy tab. Selecting a Green Button will activate the corresponding Green Mode in the system. LED feedback will indicate whether any Green Modes are currently running in the system.



Schedules:

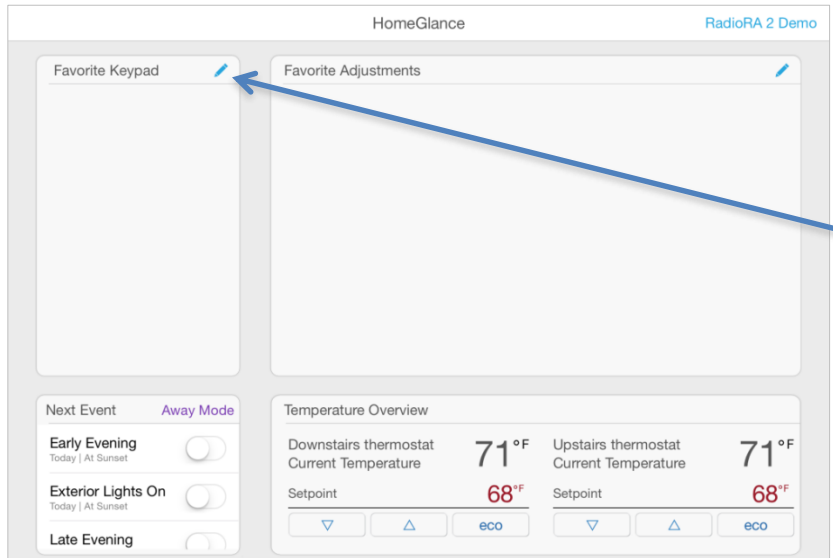
The Schedules tab allows you to view and edit your Time clock and Temperature schedules.

Controls – All fixed time and astronomical time clock events will show up in a list showing what days they occur on, what time they occur, and in which time clock modes they occur. For fixed time events, you can tap on the time to change what time the event occurs using the pop-up controls that appear. Clicking the "Edit" button next to an event will allow you to change the levels programmed for that event.

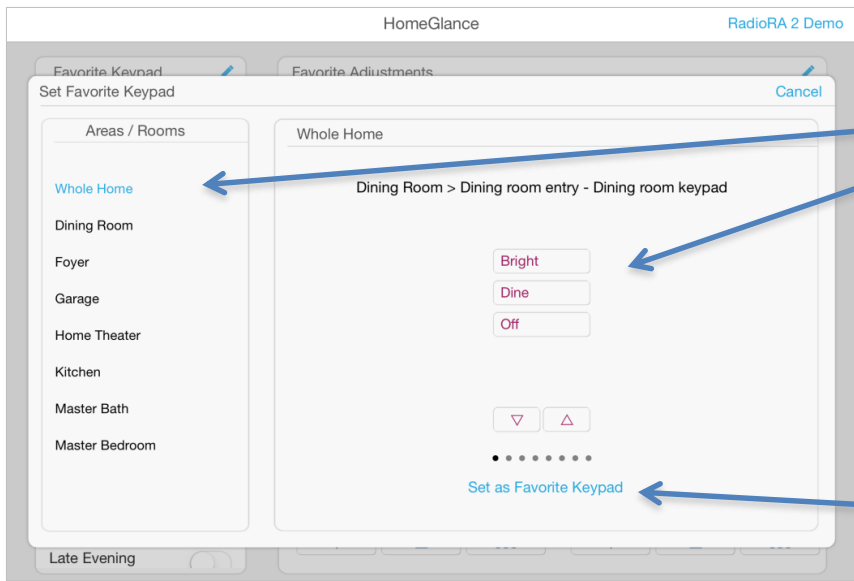


Temperature – Select an HVAC zone on the left to view the temperature schedules for that temperature zone. Each event can be activated or deactivated. The time and the heat/cool set points for each event can be edited by tapping on them and using the pop-up controls. Note: the set point controls will not allow you to set the heat and cool set points too close together. This is defined by the heat/cool delta that was set up for the HVAC zone in the PC software.

Set up your HomeGlance Favorite Keypad



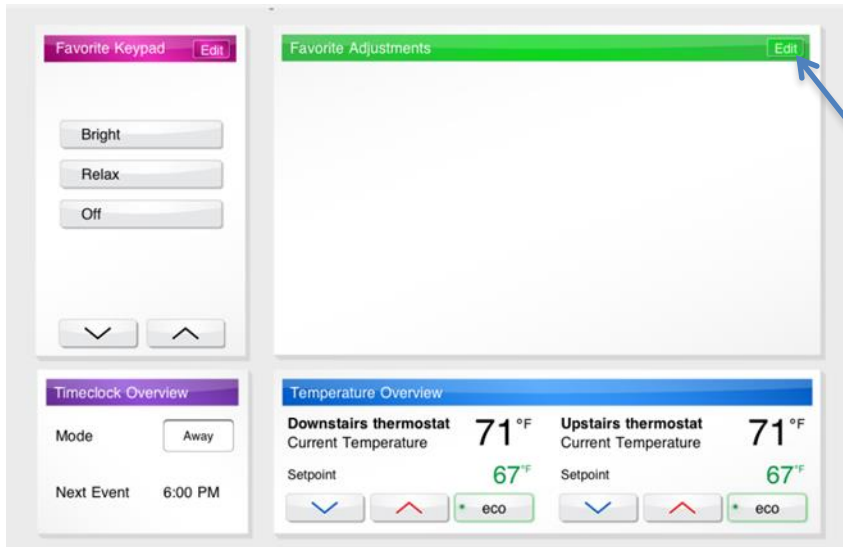
1. Tap the "Edit" button in the Favorite Keypad widget.



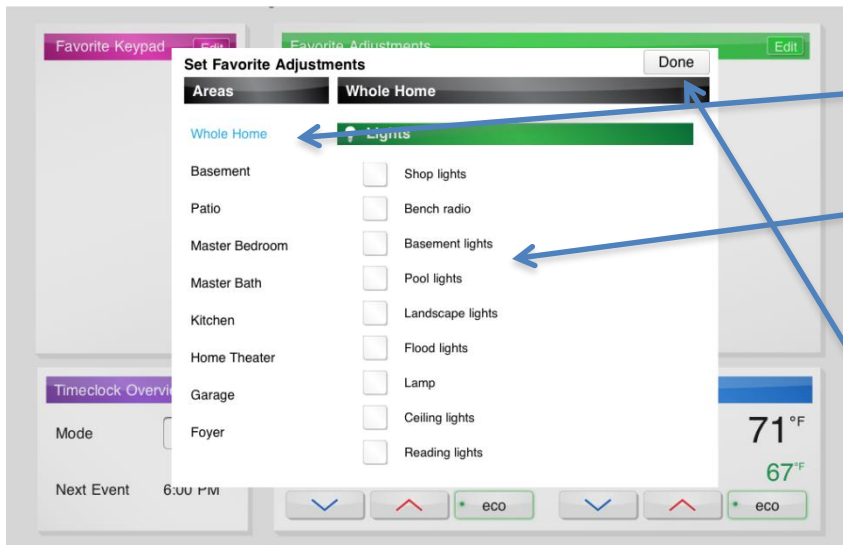
2. Find the keypad you want to be the favorite by selecting a room and swiping through the keypad list.

3. Tap the "Set as Favorite Keypad" button.

Set up your HomeGlance Favorite Adjustments



1. Tap the "Edit" button in the Favorite Adjustments widget.

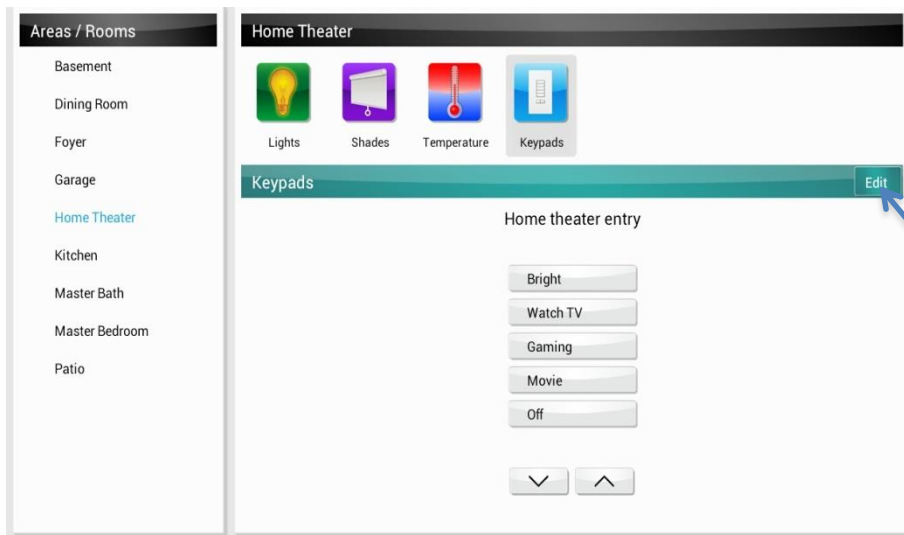


2. Select "Whole Home" or an individual room.

3. Check the lights and shades you want to appear in the Favorite Adjustments. The order they are selected will be the order in which they appear.

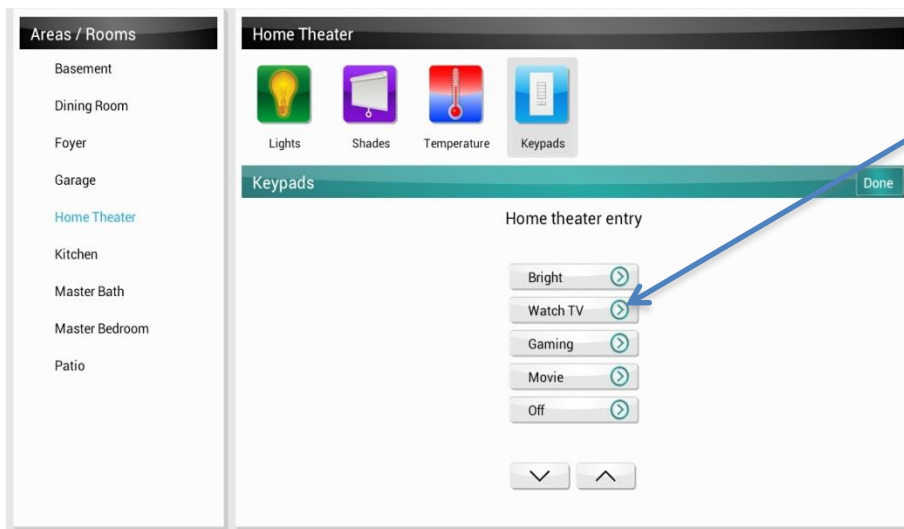
4. Tap the "Done" button.

Using the Level Editor to change programming

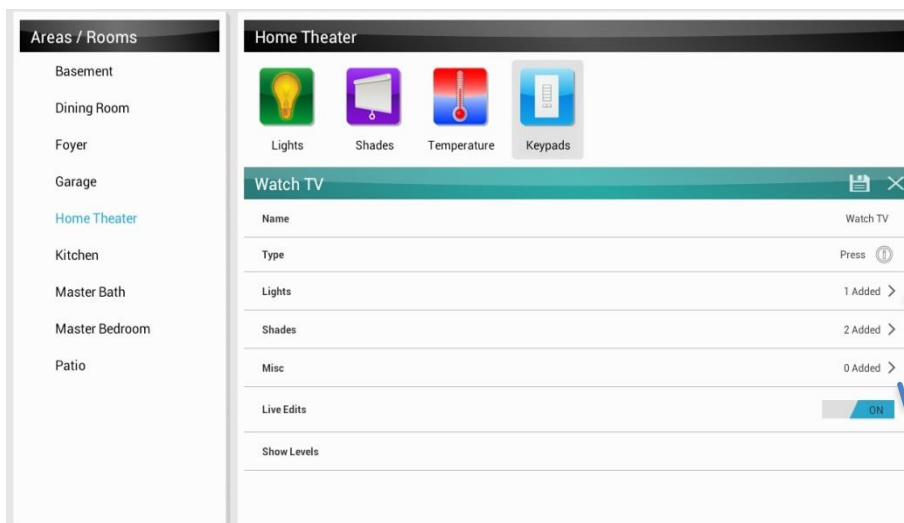


1. Go to the "Control & Monitor" tab and find the keypad you want to edit.

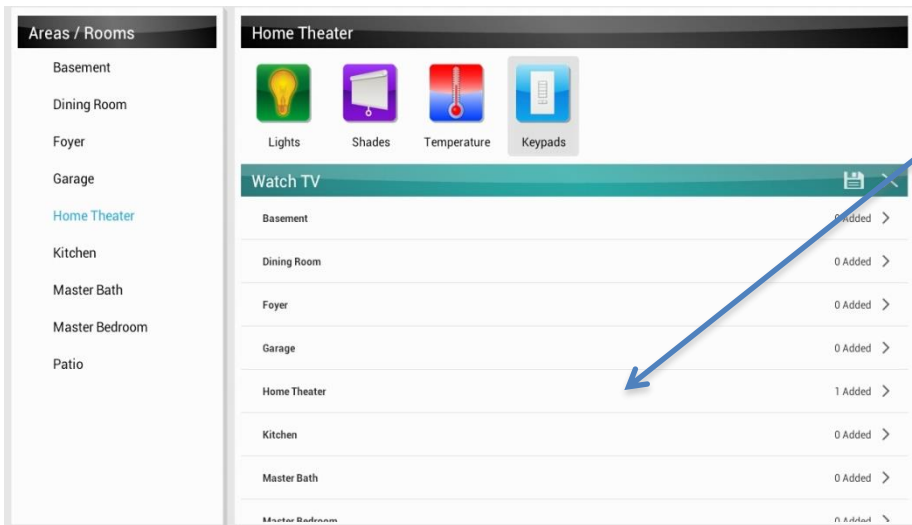
2. Tap on "Edit" to toggle the disclosure buttons on the keypad buttons.



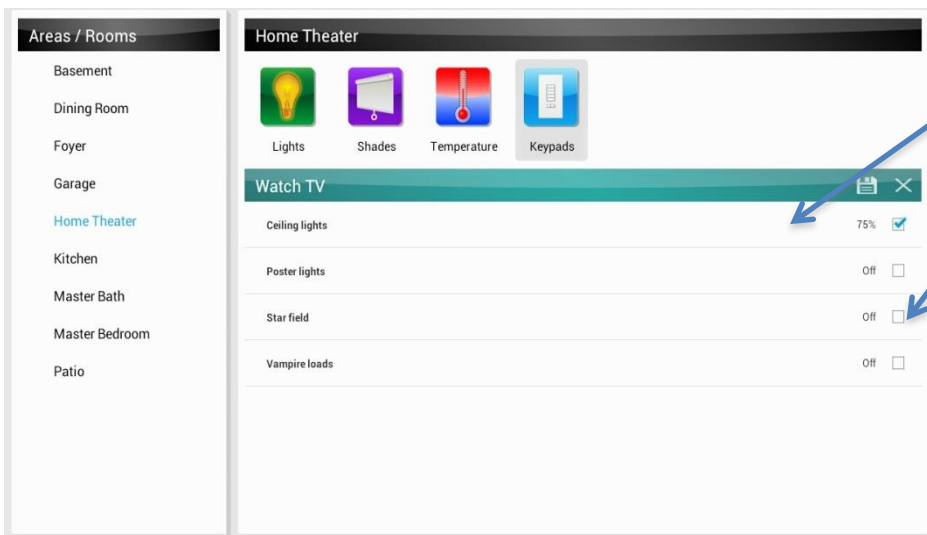
3. Tap on the disclosure button (chevron inside a circle) for the button you want to edit to bring up the level edit settings.



4. To view your edits real-time, set the "Live Edits" switch to "On". Then, select the device type you'd like to adjust (ie Lights, Shades)



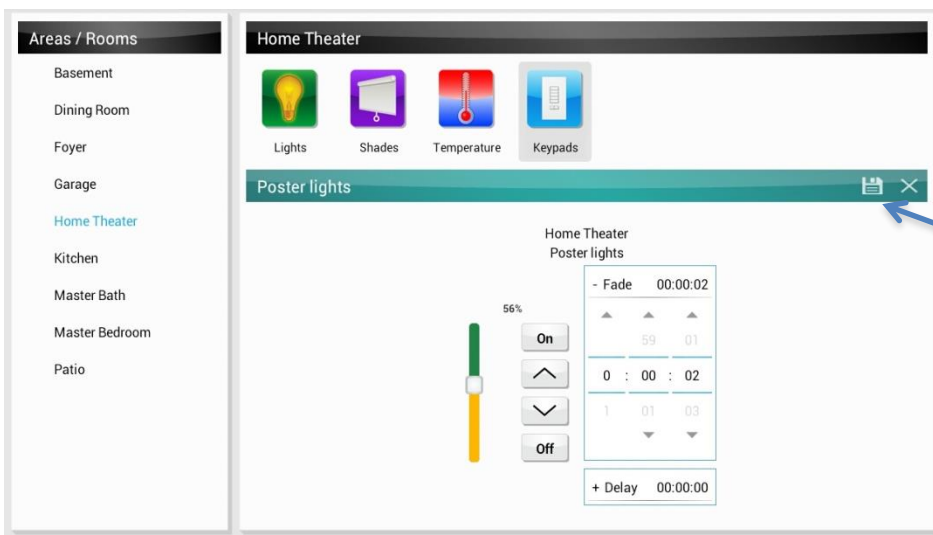
5. Tap on the room the zone you want to control is in.



6. Tap on a zone to bring up the Level Editor.

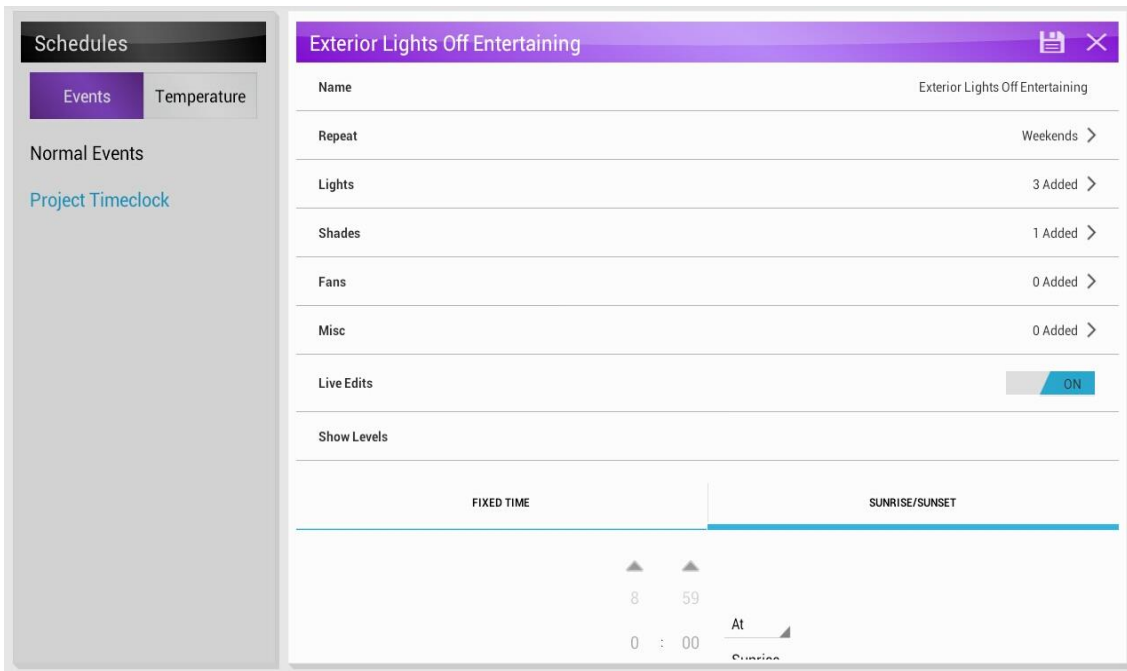
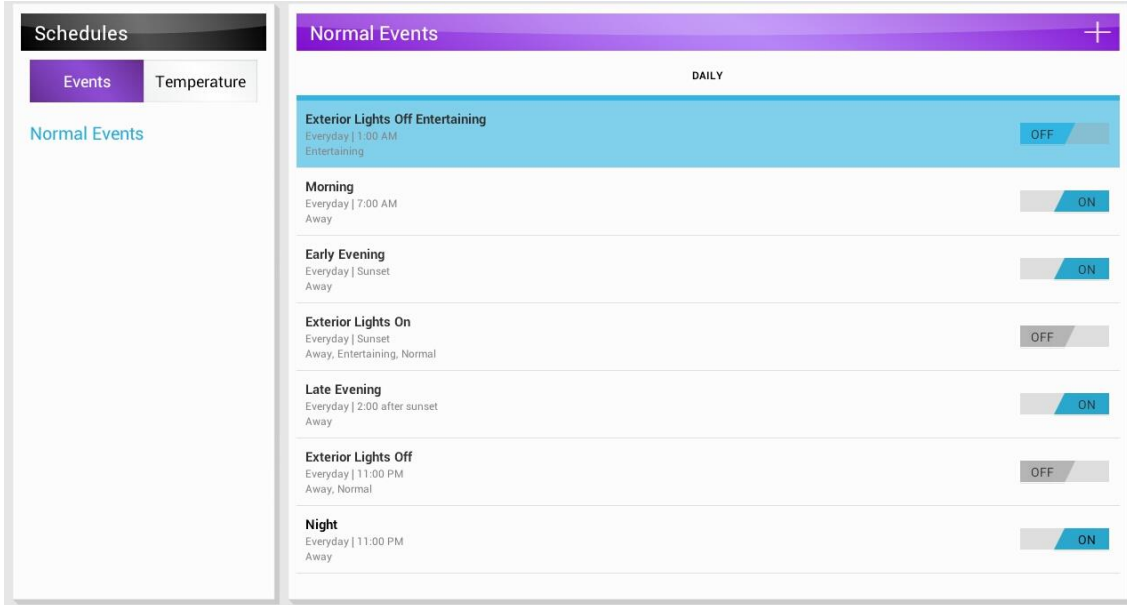
Choose a zone to make the keypad to control it.

Note: Editing a zone's level here will automatically check it for this keypad.



7. Adjust the level as desired for the selected zone and then tap the Save icon.

Note: Tapping a time clock event on the Schedules tab will bring up a level edit settings screen that is identical in layout to the button level editor. You follow the same process as keypad button level editing to edit time clock event levels. Additionally, you can set a fixed or astronomical time for the time clock event and select the days on which it occurs. Similarly, your temperature schedules can be edited from the Schedules tab if they have already been configured in the PC Software and transferred to the RadioRA 2 Main Repeater/HWQS Processor.



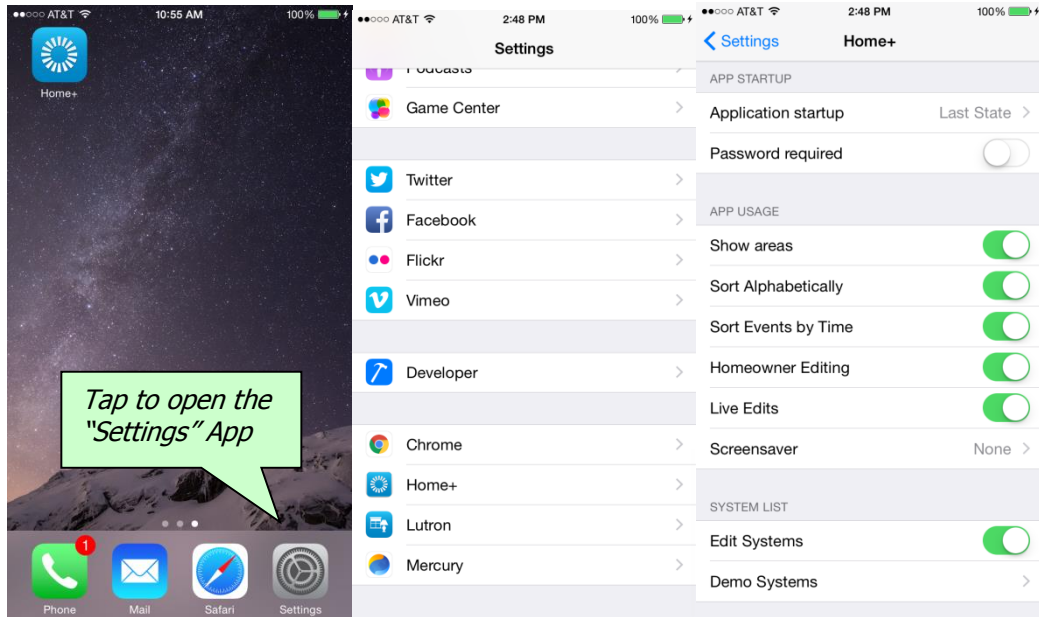
Below are certain scenarios that will affect how keypad button or event zones can be edited.

Scenario	Can Add/ Remove Zones	Can Edit Zone Levels	Programming
Zone Type is CCO Maintained	No	No	Zone is disabled in zone list. Can view whether the zone is affected/unaffected by the button/event
Zone Type is DMX Single Channel	No	Yes	Zone is only enabled in zone list if it is affected. Can view whether the zone is affected/unaffected by the button/event
Zone is Locked	No	No	Can view whether the zone is affected/unaffected by the button/event
Keypad is Locked	No	No	Cannot view button programming
Button/Event has conditional programming	No	No	Cannot view button/event programming
Button/Event has a Shared Scene	No	Yes	Can view/change zone programming
Button/Event has an Area Scene	No	Yes	Can view/change zone programming
Keypad is Homeowner Keypad	Yes	Yes	Can view and edit programming

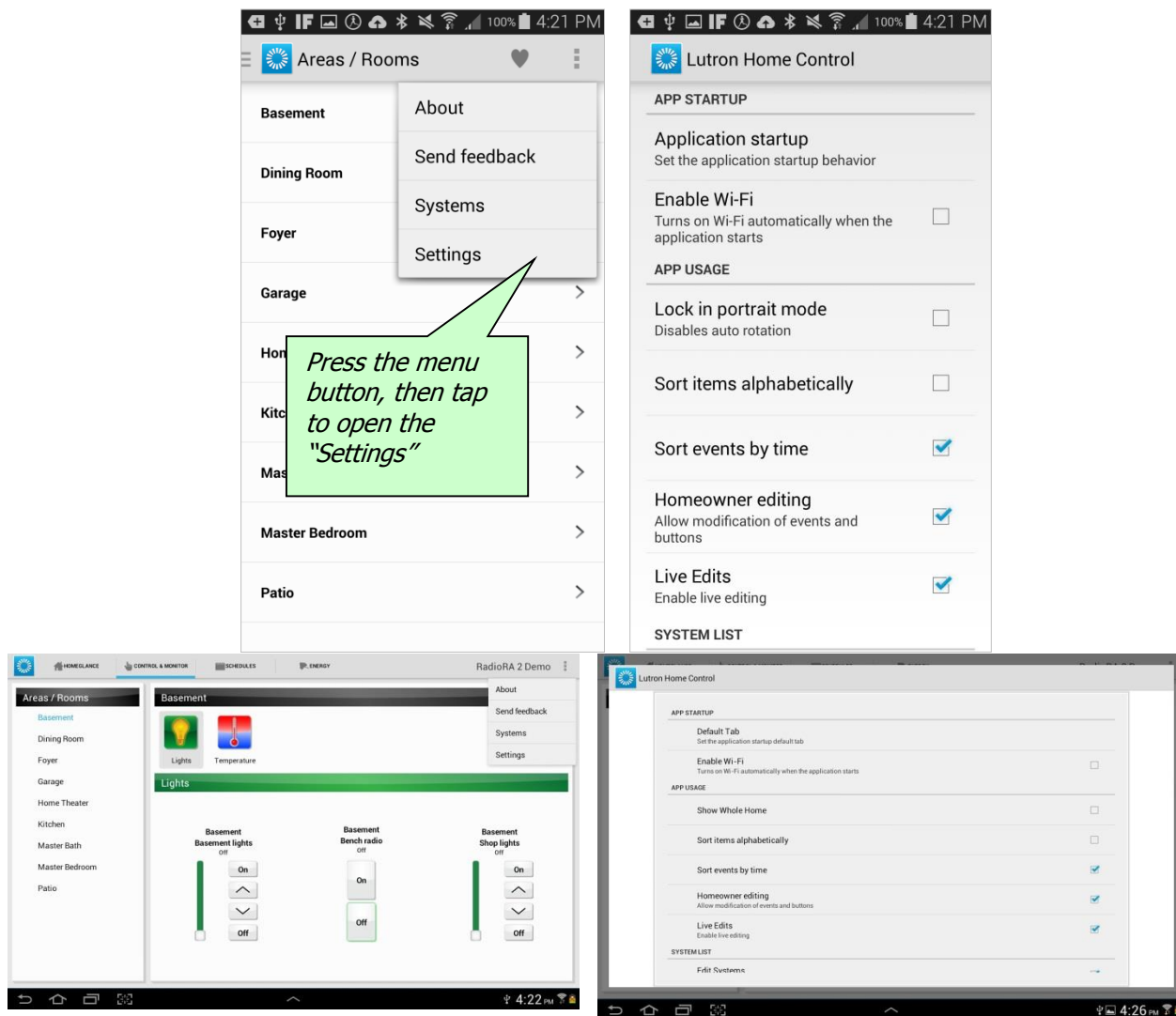
Advanced Topics

Advanced Settings:

Your iPad/iPhone/iPod will have Out-of-app settings dedicated to the Lutron Home Control+ App. You can navigate by launching the Settings App, then selecting the "Home+" row.



Your Android device has app settings within the app. You can navigate by pressing the Menu button, then selecting the "Settings".



You can set the following settings for all supported devices:

1. Sort items alphabetically
 - a. When checked, this sorts items alphabetically by name, however events will only be alphabetical if "Sort events by time" is unchecked.
 - b. When unchecked, the app sorts items by order added to the system.
2. Sort events by time
 - a. When checked, this sorts schedule events (Time clock, HVAC) chronologically based on when they are scheduled to occur
 - b. When unchecked, events are sorted alphabetically if "Sort items alphabetically" is checked. Otherwise, events are sorted by order added to the system.
3. Homeowner editing – This is useful to turn to off after your system is configured. It prevents future tampering of your system's settings. Does not affect Homeowner Keypads
 - a. When checked, this will allow changes of events and buttons.
 - b. When unchecked, keypad buttons and schedule events cannot be changed.

4. Live Edits – This is useful to prevent levels being changed while editing levels keypad, or to view changes real-time while editing keypad levels.
 - a. When checked, shades and lights will react to real-time changes made in the app while editing schedules and keypad buttons.
 - b. When unchecked, keypad button and schedule level edits will not be displayed real-time.
5. Edit Systems – This is useful to turn to off after your system is configured. It prevents future tampering of your system’s settings.
 - a. When checked, this will show the Edit button on the Systems page in the app.
 - b. When unchecked, the Edit button on the Systems page will be hidden.
6. Demo Systems – A demo system (RadioRA 2 or HomeWorks QS) is useful for illustrating the App to potential customers or friends.
 - a. When checked, this will show the respective demo system.
 - b. When unchecked, only real systems will be shown.
7. Integration Buttons
 - a. Integration Buttons
 - When checked – Will display virtual buttons for CCT devices
 - When unchecked – Virtual buttons for CCT devices will not be shown
 - b. Unprogrammed Buttons
 - When checked – Will show all virtual buttons even if they have no programming
 - When unchecked – Will only display virtual buttons for CCT devices that have programming
8. Send anonymous usage data – This is useful to allow us to better adapt to customer needs by seeing which features they use the most
 - a. When checked, will anonymously report user actions within the app
 - b. When unchecked, no information will be automatically reported for the app.

You can set the following settings for Tablets (iPads and Android Tablets):

1. Default Tab – This setting determines which tab will be shown when the app is launched. Options include: HomeGlance, Control and Monitor, Energy, and Schedules.
2. Show Whole Home – This is useful for a quick way to view all devices of a certain type (ie Lights, Shades) all at once.
 - a. When checked, this displays the “Whole Home” option in the Areas list.
 - b. When unchecked, items can only be viewed under the area they are in.

You can set the following out-of-app settings for the iPhone/iPod Touch:

1. Application startup – *Also available on Android phones*
 - a. “Last State” - the app navigates automatically to the screen that was being viewed the last time the app closed.
 - b. “Favorite (default system)” - the app navigates automatically to the screen set as the Favorite of your default system.
 - c. “Initial screen (default system)” - the app always navigates to the Area screen of your default system.
2. Password required – Requiring a password prompts the user to enter a password before opening the app and is useful if you want to restrict access to your controls
 - a. When “On”, this will prompt the user to enter a password when he opens the app
 - b. When “Off”, anyone can use the app on the device without entering a password

3. **Show areas** – Showing areas organizes your controls by area and is useful when you have many controls.
 - a. When “On”, this will show a view of your rooms and let you navigate to controls by room.
 - b. When “Off”, all your controls will be in a single area together.
4. **Screensaver** – Allows the device to turn on a screensaver after a specified period of inactivity and is useful for saving battery life when the user isn’t using the app.

You can set the following settings for Android Devices:

1. **Enable Wi-Fi** – This is useful if you normally disable Wi-Fi to conserve battery power, but would like to enable it to connect to your Lutron system.
 - a. When checked, this will automatically turn on your Wi-Fi connection when the application starts.
 - b. When unchecked, your Wi-Fi connection will not be affected by the app.

Advanced: Syncing homeowner edits with the Lutron system

When button, time clock, or temperature programming is modified by the Lutron Home Control+ Level Editor feature, this programming will not match the programming specified in the RadioRA 2 and HWQS software. To sync these changes with the database, run the software and transfer to the Main Repeater or Processor. Before the transfer occurs, the software will prompt stating that homeowner edits were found in the Main Repeater or Processor and provide an option to sync them. Select “Yes” from this prompt and the database will be synchronized with the changes made by Lutron Home Control+.

Advanced: Set up your home for access when away

The Lutron Home Control App can access your Lutron system from a remote location. Lutron supports two methods of configuring this.

Option 1: Using Lutron’s Remote Access Service

With RadioRA 2 6.1.0 and up or HWQS 5.1.0 and up and LHC+ app version 5.1 and up, set up for this feature can be done quickly in the app.

1. Verify the network settings are correct on your system. If using a static IP address, the system **MUST** have the correct settings, including Gateway Address and DNS Server. In the RadioRA 2 software, this can be verified on the Design tab using the Find Main Repeater tool, or in the HWQS software, on the Activate tab under Processors. Expand the Advanced Settings.
2. In the app on the Systems screen, tap the cloud icon.
3. Tap “I don’t have an account”.
4. Select your system from the list and follow the instructions.
5. Provide an email address/password for the account.
6. Make an in-app purchase for one year of remote access.
7. When logged into this account you can now access the system locally (when on your home wifi) and remotely (when connected to the internet outside your home).

For additional information please see the Remote Access FAQ:

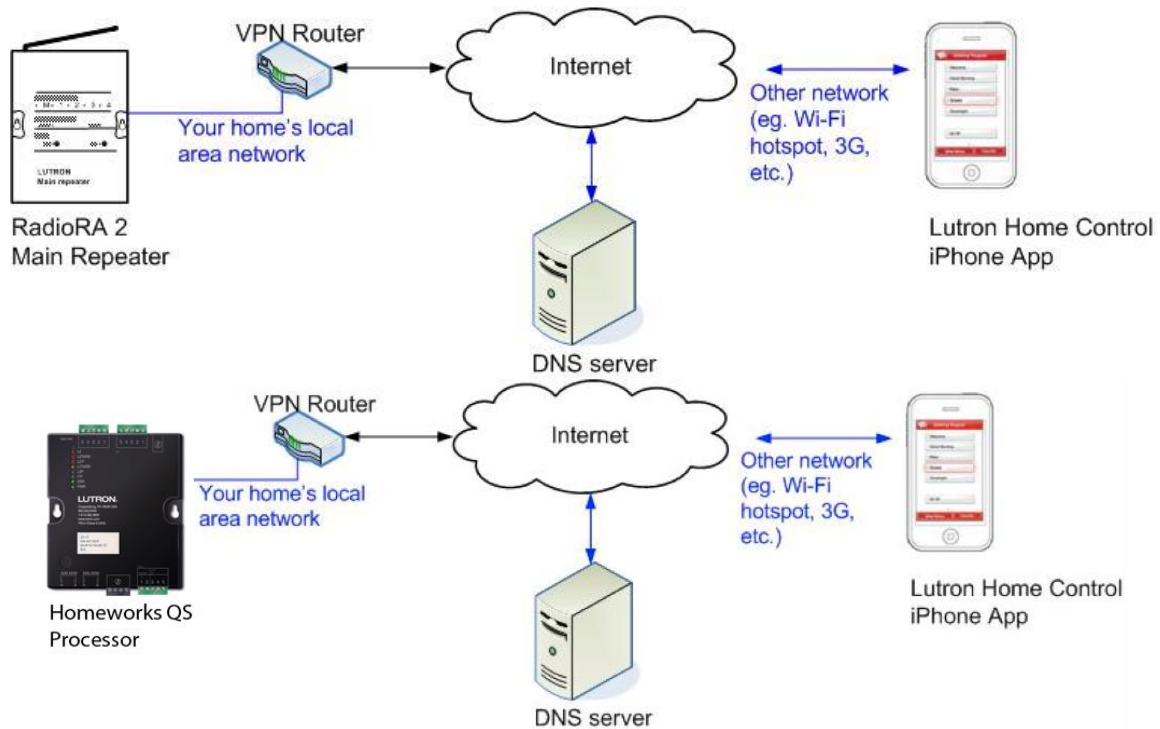
<http://www.lutron.com/TechnicalDocumentLibrary/Lutron%20Home%20Control%20Remote%20Access%20FAQ.pdf>

Option 2: Using a VPN

A network professional is recommended to set up your network with this configuration.

You need the following items:

- A. RadioRA2 Main Repeater or HomeWorks QS processor
- B. VPN Router and your network set up with an accessible VPN⁵
- C. Static IP address from your Internet Service Provider or an account with a dynamic DNS service like DynDNS.org.
- D. iPad/iPhone/iPod touch/Android with Lutron Home Control app



iPhone setup:

After configuring your home's local area network for VPN access, you will need to configure the iPhone to access the VPN before launching the Lutron Home Control app. Below are the steps you will need to take on the iPhone:

1. Open the "Settings" app
2. Click on "General"
3. Click on "VPN"
4. Click on "Add VPN Configuration"
5. Select the PPTP tab
6. Enter the appropriate information, based on how you configured the VPN router.
 - a. "Server" will be the IP address or Dynamic DNS name to access the router from the internet
 - b. "Account" is the user name set up for the PPTP server on the VPN router
 - c. "Password" is the password set up for the user name on the VPN router

⁵ For more information on VPNs, please see Lutron's App Note #231 about using a VPN Connection to Remotely access your Lutron system.

7. Save the VPN configuration.
8. Slide the "VPN" switch to the ON position (this establishes the connection with the VPN, if available). Once connected, there will be an icon at the top of the screen indicating the VPN session is active.
9. Launch the Lutron Home Control app to find and connect to the Main Repeater or HWQS processor.

Android setup:

After configuring your home's local area network for VPN access, you will need to configure the Android to access the VPN before launching the Lutron Home Control app. Below are the steps you will need to take on Android (note: these steps are based on Android version 4.0.4 and may slightly vary depending on which version of Android your device is using)

1. Open the "Settings" app
 2. Tap "Wireless & networks"
 3. Tap "More..."
 4. Tap "VPN"
 5. Tap "Add VPN Network"
 6. Set Type to "PPTP"
 7. Enter the appropriate information, based on how you configured the VPN router.
 - a. "VPN name" is the configurable name of the VPN connection (e.g. "Home")
 - b. "Server Address" will be the IP address or Dynamic DNS name to access the router from the internet
 - c. Tap "Save"
 - d. Click on the name of the VPN connection to connect to it
 - e. "Username" is the user name set up for the PPTP server on the VPN router
 - f. "Password" is the password set up for the user name on the VPN router
 8. Click on "Connect" to establish the connection
 9. Once connected, there will be an icon at the top of the screen indicating the VPN session is active.
 10. Launch the Lutron Home Control app to find and connect to the RadioRA 2 Main Repeater or Homeworks QS processor.

Best practices

1. It is strongly suggested that the names given to the different areas, rooms, and controls in the software tools are descriptive and intuitive for the user in order to provide them with the best experience possible. For example, instead of naming the rooms Room 1, Room 2 ,etc. give the rooms names that are easy for the user to identify, such as Living Room and Foyer. Always name the device "Location" for keypads in a room. The "Location" is the name of the keypad that will show on the iPhone or iPod touch mobile digital device.
2. Setting up a remote access connection to the system will give the user the ability to control from both inside and outside the home on a Wi-Fi® network. This will make it possible for the user to control their system via a 3G/4G cellular network.
3. Limit the number of keypads that are viewed to what is really needed. Displaying many keypads adds complexity and time to the use of the application. Limit the number of displayed keypads so that the homeowner can quickly use the application.
4. In the PC software, set up a single iPhone/Android only keypad with the most commonly used scenes and most commonly monitored elements in the house. Set this keypad as the Favorite in the iPhone/Android and it will open to the keypad when the application is first started. This quickly provides the homeowner with the commonly used functions for multiple areas of the

house. The keypad must be link assigned but does NOT need to be activated to be seen in the application.

Trademarks

Apple, iTunes, and iPod are registered trademarks of Apple, Inc.

iPhone is a trademark of Apple, Inc.

iPad is a trademark of Apple, Inc.

Apple Watch is a trademark of Apple, Inc.

Android is a trademark of Google Inc. Use of this trademark is subject to [Google Permissions](#).

Google Play is a trademark of Google Inc.

App Store is a service mark of Apple, Inc.

Wi-Fi is a registered trademark of the Wi-Fi Alliance.

Lutron, HomeWorks, QS, and the sunburst logo are registered trademarks of Lutron Electronics Co., Inc.

©2015 Lutron Electronics Co., Inc.