

PHOTO MANAGER MX DELUXE



English language manual



Copyright

This documentation is protected by law. All rights, especially the right of duplication, circulation, and translation, are reserved.

No part of this publication may be reproduced in the form of copies, microfilms or other processes, or transmitted into a language used for machines, especially data processing machines, without the express written consent of the publisher.

All copyrights reserved.

All other product names are trademarks of the corresponding manufacturers. Errors in and changes to the contents as well as program modifications reserved.

MAGIX is a registered trademark of MAGIX AG.

Other mentioned product names may be registered trademarks of the respective manufacturer.

This product uses MAGIX patent pending technology.

Copyright © MAGIX AG, 2003-2012. All rights reserved.

Table of Contents

Copyright	2
Support	6
Uninstalling the program	8
Serial number	8
More about MAGIX	9
MAGIX Online World	9
MAGIX News Center	10
Introduction	11
What is MAGIX Photo Manager MX Deluxe?	11
Supported formats	12
Overview of the program screen	13
Restrictions	13
Quick start	14
Manage photos	14
Importing photos	15
Viewing photos	16
Finding photos	16
Create categories	17
Select pictures according to criteria	18
Scan photos	23
Optimize photos	24
Create slideshows and photo albums	25
Print photos	27
Present your photos	28
Interface – The layout of MAGIX Photo Manager MX Deluxe	31
Advanced mode & basic mode	31
Toolbars	32
Navigation and info tabs	33
Photo overview	42
Album view	46
Optimize view	47
Slideshow monitor	55

More useful functions	59
Database	59
Adjust properties	60
Import	61
Create slideshow	65
Export	69
Secure data: Burn	75
Find pictures and make a selection	77
Print and order pictures	83
MAGIX Photo Viewer	85
Create map	87
Create panorama image	88
Equalizer	90
 Functions in detail	 91
Multiple rename	91
Inserting and editing images from the clipboard	93
Work in networks	93
Multi-user support	94
Create backup copy on CD/DVD	95
MAGIX Foto Designer 7	97
Working with MAGIX Online Album	98
Digital picture frames	102
 Keyboard shortcuts	 105
 Menu	 106
File menu	106
Edit menu	114
Library menu	118
Security menu	121
Windows menu	122
"Share" menu	123
Tasks menu	123
Help Menu	123
 MAGIX services in detail	 126
magix.info	126
MAGIX Online Album	127
MAGIX Website Maker	129
Catooh – the Online Content Library	130

If you still have questions	131
Task assistant	131
Tips for program help	131
PDF Manual	132
Restrictions	132
Glossary	133
Index	148

Support

Dear MAGIX customer,

Our aim is to provide fast, convenient, solution-focused support at all times. To this end, we offer a wide range of services:

- **Unlimited web support:**

As a registered MAGIX customer, you have unlimited access to web support offered via the convenient MAGIX service portal on <http://support.magix.net>, including an intelligent help assistant, high-quality FAQs, patches and user reports that are constantly updated.

The only requirement for use is product registration at www.magix.com

- **The online community, on-the-spot support and a platform for exchange:**

MAGIX customers have free and unlimited access to the online community at www.magix.info, which includes approx. 120,000 members and offers the opportunity to ask members questions concerning MAGIX products as well as use the search function to search for specific topics or answers. In addition to questions & answers, the knowledge pool includes a glossary, video tutorials and a discussion forum. The multiple experts, found round-the-clock at www.magix.info guarantee quick answers, which sometimes come within minutes of a question being posted.

- **Email support for MAGIX products:**

For every new MAGIX product you will receive, as of date purchase, 12 months of email based customer service.

Premium email support:

For priority support, or if you want the MAGIX support team to help with non-MAGIX related hardware problems you can purchase a Premium email support ticket. Log in at <http://support.magix.net> and click on "Purchase access code", the ticket is for a specific problem, and is valid until it is solved, it is not restricted to an email.

Please note: To be able to use the Premium email support and free product email support via the Internet, you have to register your MAGIX product using the serial number provided. This can be found on the CD case of your installation CD or on the inside of the DVD box.

- **Additional telephone service:**

Besides the large number of free customer service offers, we also offer a fee-based telephone customer service.

Here you can find a summary of our technical support telephone numbers:
<http://support.magix.net/>

Mail (Europe): MAGIX Development Support, P.O. Box 20 09 14, 01194 Dresden, Germany

Mail (North America): MAGIX Customer Service, 1105 Terminal Way #302, Reno, NV 89502, USA

Please make sure you have the following information at hand:

- Program version
- Configuration details (operating system, processor, memory, hard drive, etc.), sound card configuration (type, driver)
- Information regarding other audio software installed

MAGIX Sales Department

You can reach the MAGIX Sales Department workdays for help with the following questions and problems:

- Orders
- Product consulting (pre-purchase)
- Upgrade requests
- Returns

Europe

Monday - Friday, 09:00-16:00 GMT

U.K.: 0203 3189218

Denmark: 45 699 18763

Sweden: 46 852 500713

Finland: 35 89 42419023

Norway: 47 210 35843

North America

9 am to 4 pm EST Mon-Fri

Phone: 1-305-722-5810

Uninstalling the program

If you would like to uninstall MAGIX Photo Manager MX Deluxe, you can do so via the control panel under "Software". Or go to "Programs > MAGIX > MAGIX Photo Manager MX Deluxe > Service and Support > Uninstall MAGIX Photo Manager MX Deluxe".

Serial number

A serial number is included with each product. This serial number is required for the installation of the software and enables usage of additional bonus services.

What can a serial number do?

A serial number ensures that your copy of MAGIX Photo Manager MX Deluxe is clearly assigned to you and only you, and it makes improved and more targeted customer service possible. Abuse of the software can be prevented with a serial number, since it ensures that the optimum price/performance ratio continues to be offered by MAGIX.

Where can the serial number be found?

The serial number can be found on the reverse side of your CD/DVD case. If your product, for example, is packed in a DVD box, then you'll find the serial number on the inside.

For versions that have been especially optimized for the Internet (download versions), directly following the transaction you'll receive a serial number by email to activate the software.

When will you need the serial number?

The serial number is required when you start or register MAGIX Photo Manager MX Deluxe for the first time.

Note: We explicitly recommend registering your product, since only then are you entitled to get program updates and contact MAGIX Support. Entering the serial number is also required for activating codecs.

More about MAGIX

MAGIX Online World

Discover the possibilities of MAGIX Online World. Whether it's for your photos, videos, or music, we have just the right solution for you.

MAGIX Online Album

MAGIX Online Album (view page 126) lets you publish your photos and videos directly on the Internet. You can also play your music as MP3s in the Online Album. Create your personal album website in no time with your own Internet address, and showcase everything that's fun about multimedia to the world.

For example, you can upload especially impressive photos or entire slideshows as videos straight from your MAGIX program. Pictures you put on your website can be downloaded with ease from the comfort of your own home and integrated into your slideshow.

MAGIX Website Maker

MAGIX Website Maker helps you create a personal Internet showcase with a professional design in just a few mouse clicks – without prior knowledge, including your own chosen domain and email address. Publish slideshows and videos and accessorize your site with music and various effects – anything from a simple business card to a fireworks display of effects, professional or private – show your best side!

More about this topic can be found under MAGIX Website Maker. (view page 129)

magix.info

Do you have questions, need help, or are looking for expert tips and tutorial videos on using your MAGIX product? At magix.info you will find answers and solutions as well as workshops and a comprehensive user forum for software and multimedia queries.

You can access magix.info online at www.magix.info

Catooh

If your project is missing pictures, videos, DVD menus, sounds, or samples, then you should have a look at the huge selection available at Catooh. There you'll be able to buy media in excellent quality for low prices: DVD menus, Slideshow Maker styles, decorative elements, 3D power effects, 3D transition series, MAGIX Soundpools, songs, ringtones... Perfectly suited to all MAGIX photo, video, and music projects.

MAGIX News Center

The MAGIX News Center features links to current online tutorials and tips & tricks on the software application examples. The "News" is indicated by color according to content:

- Green indicates practical tips & tricks for the software
- Yellow reports the availability of new patches and updates
- Red for special offers, contests and questionnaires

If no new messages are present, the button will appear gray. When the MAGIX News Center is clicked, all of the available information will be displayed. Click the messages to reach the corresponding website.

Introduction

What is MAGIX Photo Manager MX Deluxe?

MAGIX Photo Manager MX Deluxe is the perfect tool for digital photographers and collectors of digital photos. It is a photo album, photo optimizer, photo manager and photo viewer in one.

Is your computer full of unorganized photos from your digital camera? Masses of photographs lying around in envelopes or photo albums waiting to be scanned while your digital camera keeps on delivering new pictures that will have to be saved somewhere. Masses of photographs lying around in envelopes or photo albums waiting to be scanned while your digital camera keeps on delivering new pictures that will have to be saved somewhere.

MAGIX Photo Manager MX Deluxe can display, restore, organize, enhance, and perfectly print all those photos, present them in a slideshow and even burn them all onto a CD or DVD.

There are lots of ways to use it:

- **Arrange photos** (view page 77): A sophisticated database lets you find and gather photos from anywhere on your computer.
- **Import photos (view page 15):** Simply connect your digital camera or scanner to your computer and transfer the photos to your hard drive.
- **Sort photos:** (view page 37, view page 17) Move specific photo collections as one group and move them to the relevant category (vacation photos to “Vacation”, family photos to “Family”, and so on).
- **Select photos** (view page 18): Choose, for example, all images showing a certain person or let MAGIX Photo Manager MX Deluxe pick the pictures that are really worth showing.
- **Retouch & restore photos (view page 23):** Retouch and restore your photo collection quickly. You can straighten out crooked photos by drawing a line with the mouse. Red eyes can be removed with a click. The original photo file is never changed, allowing you to experiment without any worries.
- **Present photos:** (view page 69, view page 28) All photos can be collected in a playable photo album and presented in full-screen. Photo albums, posters, and individual photos may be printed out immediately or archived on CDs or DVD.

Supported formats

Photo import: JPEG (*.jpg; *.jfif; *.jpeg; *.jpe), Windows Bitmap Formats (*.bmp; *.dib; *.rle), Tagged Image File Format (*.tif; *.tiff), Kodak Photo CD (*.pcd), Targa (*.tga), Adobe Photoshop PSD (*.psd, not all features), Portable Network Graphic (*.png), Portable Graymap PGM (*.pgm), Portable Pixmap PPM (*.ppm), Sun Raster File (*.RAS), PCX format (*.pcx) and RAW formats from many different camera models.

Photo export: JPEG (*.jpg; *.jfif; *.jpeg; *.jpe), Windows Bitmap Formats (*.bmp; *.dib; *.rle, nur 24Bit RGB), Tagged Image File Format (*.tif; *.tiff, uncompressed/with JPEG compression), Targa (*.tga), Adobe Photoshop PSD (*.psd, not all features), Portable Network Graphic (*.png), Portable Pixmap PPM (*.ppm), Sun Raster File (*.RAS), PCX format (*.pcx) and RAW formats from many different camera models.

Video import: DirectShow compatible standard formats with installed codecs (AVI, MOV, MJPEG, MPEG etc.) and WMV9

Video export: DirectShow compatible standard formats with installed codecs (AVI, MOV, MJPEG, MPEG etc.), WMV9, RealHelix, MXV, WMV HD

Audio import: Wave, MP3, OGG VORBIS

The integrated image processing program, MAGIX Foto Designer 7, can import the following image formats: JPEG, TIFF, GIF, BMP, RLE, DIB, PNG, TGA, PCX, EMF, WMF, PPM, PGM, PBM, PSD, RAS, IFF, LBM and Photo CD. Export of following files is possible: JPEG, TIFF, BMP, PNG, TGA, PPM, PGM, PSD, RAS, IFF, LBM and PCX.

Note: If you want to use other image formats in MAGIX Photo Manager MX Deluxe, you must convert them first. Load the image into MAGIX Foto Designer 7, export it in the desired format, then load it into MAGIX Photo Manager MX Deluxe.

Audio export: Wave, MP3, OGG VORBIS.

Sound in picture support

Some digital cameras have an audio recording function so that you can save an audio file with each photo. The audio file is automatically included in the database overview when you import the photo from the camera.

Overview of the program screen



- 1 Menu bar (view page 105): Opens all possible functions and services in MAGIX Photo Manager MX Deluxe.
- 2 Activate/deactivate advanced mode in MAGIX Photo Manager MX Deluxe.
- 3 Toolbar: Provides access to the most important functions in MAGIX Photo Manager MX Deluxe.
- 4 Photo Manager (view page 33) in the form of folders and a database for organizing your files.
- 5 Photo overview (view page 42) to display the contents of your folders, albums, and slideshows.
- 6 Albums (view page 46): Area for creating and editing photo albums.
- 7 Photo overview toolbar (view page 44).

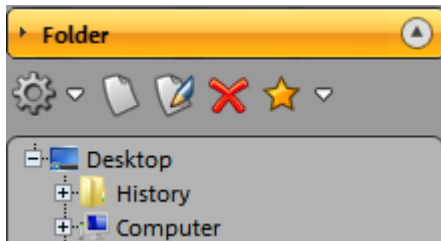
Restrictions

Tip regarding special program versions: This documentation describes the full functionality of MAGIX Photo Manager MX Deluxe. However, you may be using a restricted version of MAGIX Photo Manager MX Deluxe, and full functionality may not be available.

Quick start

Manage photos

With MAGIX Photo Manager MX Deluxe there are several ways to get your pictures onto your computer. You can either import photos directly from your digital camera, or scan previously developed pictures. You can access any graphic, audio and video files found on your hard drive using the folder function.



- Every folder can be opened with a mouse-click. The contents will be listed in the preview window.
 - By clicking on the "New" symbol you can create a new folder.
 - With the red cross you can move folders or files into the recycling bin.
 - To change the name of a folder, click "Rename selected folder".
-
- Clicking on the yellow star ("Add selected folder to Favorites") adds a folder to your "Favorites" folder. This list can be opened via the "Favorites" button.

You can have your photos filed into the database and search for them later on according to their creation date, keywords, or genre. Everything takes place in the intelligent virtual MAGIX Photo Manager MX Deluxe database – without time-wasting file shifting or copying.

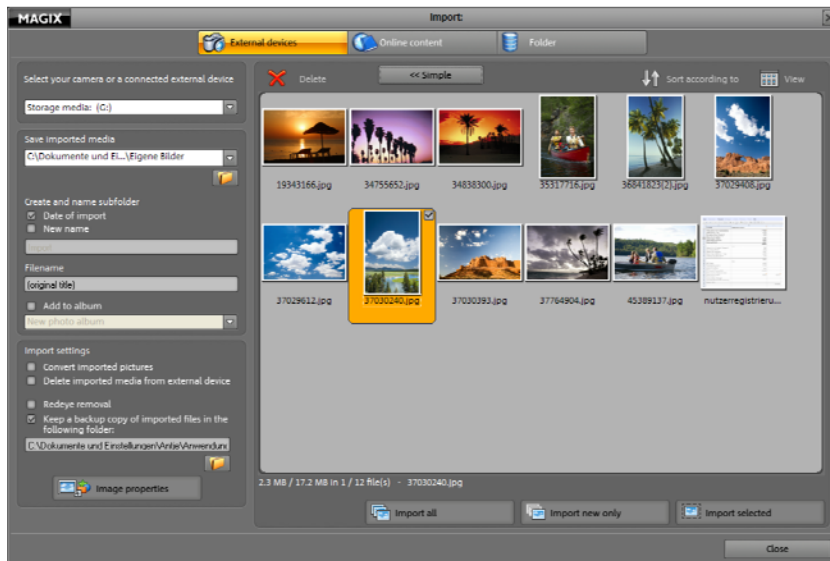
- It is recommended that you add folders with photos to the database. This function can be initiated at any time directly from the "Database" > "Add folders" menu.
- Photos imported from the camera are detected automatically and displayed in the photo overview. The same applies to every photo that you search for in Explorer.

If you change certain folders outside of MAGIX Photo Manager MX Deluxe, e.g. you copy new photos into your photo folder, you should check if the new or changed photos are also present in the MAGIX Photo Manager MX Deluxe folders. Select the option "Monitor folder" in the "Database" menu.

Importing photos

MAGIX Photo Manager MX Deluxe directly accesses digital cameras and their storage media, and then copies the image files to your hard disk. Select the file format you wish to save the photos in during this process. Most cameras identify themselves automatically as so-called "removable storage devices", and therefore appear as separate drives in Windows™ Explorer.

If the import dialog doesn't open automatically after connecting your digital camera, click **"IMPORT"**. MAGIX Photo Manager MX Deluxe will scan your PC for connected digital cameras or for storage media (e.g. compact flash cards). This will take a moment. As soon as the interfaces have been checked, the **"PHOTO IMPORT"** dialog will open. You will be able to see all of the photos saved on your camera (or the selected storage medium).

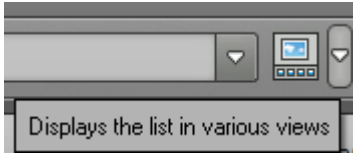


You have the option of setting the save location for your new pictures under **"TARGET FOLDER"**.

"IMPORT SETTINGS" lets you erase photos from your camera after they have been imported, convert file formats into a certain format during transfer, and specify the author and category with **"IMAGE PROPERTIES"**.

Viewing photos

There are many practical options for viewing your pictures with MAGIX Photo Manager MX Deluxe.



These can be accessed easily via the small menu above the second arrow button above and to the right next to the path information.

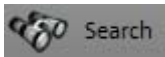
You can switch between miniature view and filmstrip view or you can navigate through the file list like in Windows Explorer.

Below the preview window you will find arrow buttons for turning pages. The 1:1 button for viewing the pictures in the original size, and the fader for increasing or reducing the size of your preview pictures. You can use the "Optimize" button to switch into the optimize mode for your photos.



Finding photos

The search function helps you find photos on the hard drive or in the database.



Click on the search button.

You can search the entire hard disk or limit the search to a certain drive or folder. After searching, all objects that were located will be displayed with a preview picture in the overview.

Hard disk search: You can enter the file name, approximate size and creation date into the search dialog.

Database search: Control the search by specifying the criteria. Up to three criteria can be searched for at the same time by using the "AND-" or "OR" logical operators.

- "AND" means that only those files that match all criteria will be listed,
- "OR" means that only those files that match at least one of the criteria will be listed.
- In addition, you can set "conditions" and "comparison elements".

Search for EXIF contents: EXIF files are information about the digital image files: This includes creation date, file size, format, as well as photo-specific details like shutter speed, diaphragm and exposure.

Search for similar: This function is explained by "Select pictures according to criteria" (view page 22).

Create categories

Select "Categories" to arrange your photos according to theme. You will find that some categories have already been suggested – hobby, friends, animals, nature, etc. You can add new categories and edit or delete the available categories. Please note: The categories are not "actual" file folders that you create on your hard disk, but rather individual links to files that could be found anywhere on your system.

This is how you file your pictures under categories:

- **Step 1:** Open the folder containing the photos you would like to sort into categories.
- **Step 2:** Next, click the "Categories" tab and drag the selected images to the desired category via drag & drop. You can even sort photos into several categories simultaneously.



Alternatively, you can also open the stamp first, select the category, and then stamp every picture that should be assigned to a specific category.



You can also create individual categories. To do so, click on the "New category" button and name the category.



You can also rename existing categories. Click on the "Rename" symbol to do this.

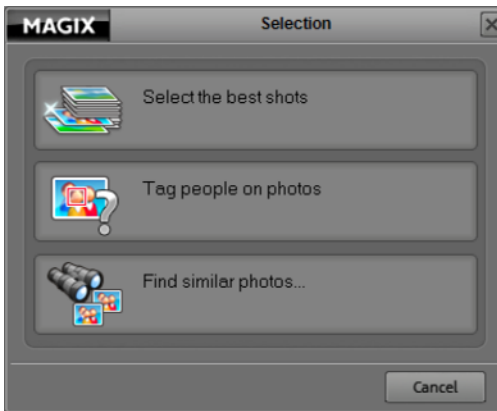
Open categories: The images belonging to a category will be displayed as soon as one category is selected. The ability to select more than one category is very useful: For example, you can select the categories "Vacation" + "Summer" + "Friends", and only pictures that have been sorted under all these categories, or photos of friends with whom you have been on holidays together will show up. Multiple marking of photos takes place like this: while holding the "Ctrl" key down, click all desired categories with the mouse.

Add a rating: Every picture can be rated with 1 to 5 stars which you will then see in the miniature view of the image. The stars in "My Ratings" each form a special category, and these can all be assigned just like the other categories.

Select pictures according to criteria



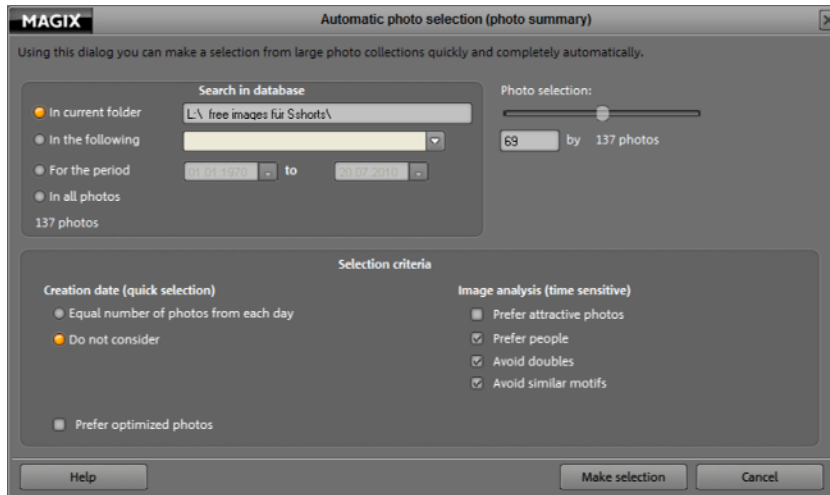
Click on "Selection" in order to open the various options for selecting images:



- Select the best shots
- Tag people on pictures
- Search for similar photos

Select the best shots

Here you can select the criteria, according to which MAGIX Photo Manager MX Deluxe will automatically create a folder with photos. This way you can create a selection of the best shots, for example, or avoid images with a certain motif, or pick pictures with a certain person, e t c. MAGIX Photo Manager MX Deluxe searches the photos or folders you indicated and creates the selection, relieving you of the time consuming job of them sorting by hand.



Step 1: Specify the image database you want to search through.

Step 2: Under "Amount" enter the number MAGIX Photo Manager MX Deluxe should filter out. The maximum number of images is limited only by the number contained in the database.

Step 3: Under "Search criteria" you can specify which images should be included/ignored.

Step 4: Click on "OK" to start searching.

The result will be listed as a new album on the right. This can be edited and saved as needed.

NOTE: The search will take longer based on the size of the database, and the number of images found.

Tag people on photos

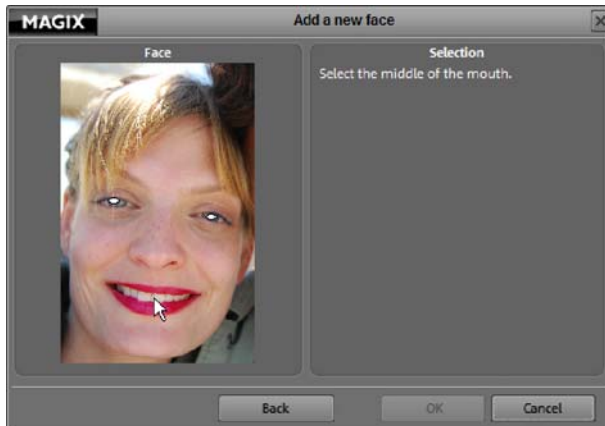
MAGIX Photo Manager MX Deluxe can automatically search your photos for faces and assign them to persons whom you have identified earlier.

Identify persons and create a category for them:

- First select an image, where faces are easily recognizable.
- Now, click on "Selection" and choose "Assign people to photos".
The "Identify persons" dialog now opens.



- Make a rectangular selection around the first face if MAGIX Photo Manager MX Deluxe does not recognize it on its own: The face will open in a magnified view, where you have to first select both eyes and then the mouth using the mouse.



- Then click on the right on "New person" and enter the person's name.





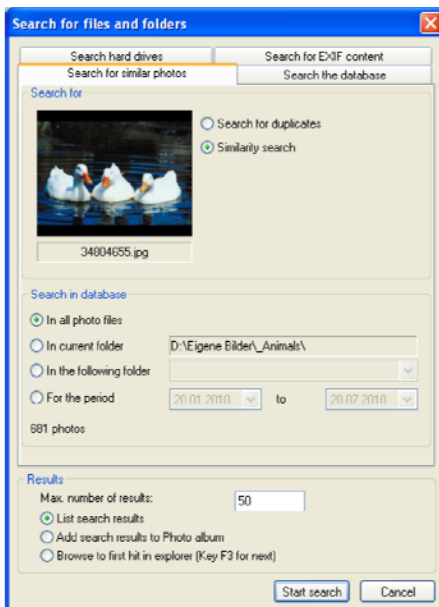
MAGIX Photo Manager MX Deluxe will then analyze the entire database. Every photo, where the face has been found will receive a little symbol with the face. In addition, you will find all persons selected by you and the photos, where they are found in "Categories" (view page 37, view page 17).

Note: If an already identified person has not been found on a different photo, you can tag him or her manually via the "Identify persons" dialog.

Find similar photos...

With this function you can quickly find the images, similar to your selected photo.

- First, select a starting image.
- Then on "Select" and choose "Search for similar photos".
A tab will open "Search for similar photos" in the Search dialog (view page 77).



- Under "Search in the database" specify where MAGIX Photo Manager MX Deluxe should search for similar photos. Under "Results", specify how the result should be displayed.

Depending on the number of photos, the search can take some time. At the end, you will see a list of similar photos in the format selected by you.

Scan photos

You need a TWAIN-compatible scanner connected to your PC to scan physical photos. "Twain" is the designation of the universal interface between image editing devices (digital cameras and scanners) and image editing programs.

Follow these instructions to scan your first picture:

Step 1: Before you start scanning, make sure that your scanner's TWAIN software is installed. If this is not the case, install the software and reboot your computer.

Step 2: If your scanner is connected, switched on, and ready to operate, then place your picture in the scanner.

Step 3: Open MAGIX Photo Manager MX Deluxe and select "File > Scan > Select source".

Step 4: Choose the device you would like to use in the dialog. This step will no longer be necessary if you continue using the same device.

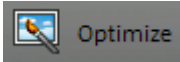
Step 5: The scan window of your scan software will appear. Specify the resolution and color depth in this window.

When the scan is complete, the TWAIN software should close automatically and MAGIX Photo Manager MX Deluxe should now display the newly created image file.

The newly acquired pictures will be saved in the "My Photos" folder under C:\ in MAGIX\MAGIX Photo Manager MX Deluxe, which was created during installation.

Optimize photos

You can optimize all photos from a folder while viewing them and compile them into a photo album.



To do so, click on "Optimize".

You can access the picture editing functions on the left-hand side.

Basic functions (view page 50)

- Exposure: Brightness, contrast, focus
- Color: Auto color, red eye correction
- Crop image
- Straighten horizon

Advanced functions (view page 52): (click the "Advanced mode" selection box in the top right):

- Advanced color modulation: White balance, coloration, black/white, sepia, saturation, color temperature
- Text in picture
- Special features: Remove curved lines, camera pan



With the help of the arrow keys you can select and optimize the large view of all the photos in the current folder one after the other. To sort the best photos into a photo album, press the "S" key after optimization (or click on the "To

album" button). The selected photo will then be sorted into the existing photo album or into a new one.

Basic functions

If your pictures don't have enough light or contrast, or you have cloudy colors due to fog, then use the "Auto color" and "Auto brightness".

"Adjust brightness" and the "Gamma" setting sets an even brightness if dark lighting at dusk or nighttime snapshots have robbed your shots of color. Additionally, shadows, mid-tones, and light as well as the entire image may be linearly adjusted in terms of their brightness.

"Contrast" and "Image sharpness" offer additional options to edit the contours of your photos afterwards.

Click on the "Redeye" tool and let MAGIX Photo Manager MX Deluxe automatically search for redeye on all faces. Or, select the eye with the existing tool sizes. You don't have to worry about marking individual pixels. Using the mouse, you can change the size of the tool: With the left mouse key held down, you can drag the perimeter of the tool to expand it.

"Cropping" can be done either freehand or using a template for aspect ratio. First, click on the "Crop" button and drag the desired area over the image with the mouse button depressed. Then confirm the selection with "Apply".

If your landscape photo is a little crooked, then you can use the "Straighten horizon" function to simply level it out - the horizon will be shifted so that it is exactly straight.

Create slideshows and photo albums

All images in a folder can also be played back as a slideshow.



- Select an image and click the **SLIDESHOW** button.

MAGIX Photo Viewer will open and the slideshow will play back automatically in full-screen mode.

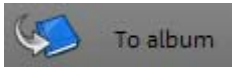
- To activate the navigation buttons, move the mouse to the top or bottom edge of the image.
- There is a default display setting of 7 seconds for each photo before the next one appears after an automatic fade. You can also change these settings later (gear symbol).
- You can manually flip forward and backward between images as you like by clicking on the arrows.
- To leave slideshow mode, press the "Esc" button and close the program.

Note: A help file for all of the functions of Photo Viewer may be accessed via "F1" on your keyboard.

Play album as slideshow

Different photos can be compiled in a single album and then be viewed comfortably in sequence, regardless of which folder they are in.

Step 1: In the overview window, you can select as many individual images as you like from any folder, and then click on **"TO ALBUM"**.



The album area to the right will become visible and the image will be sorted into the album section. This way, you can always keep an eye on the contents of your current album.

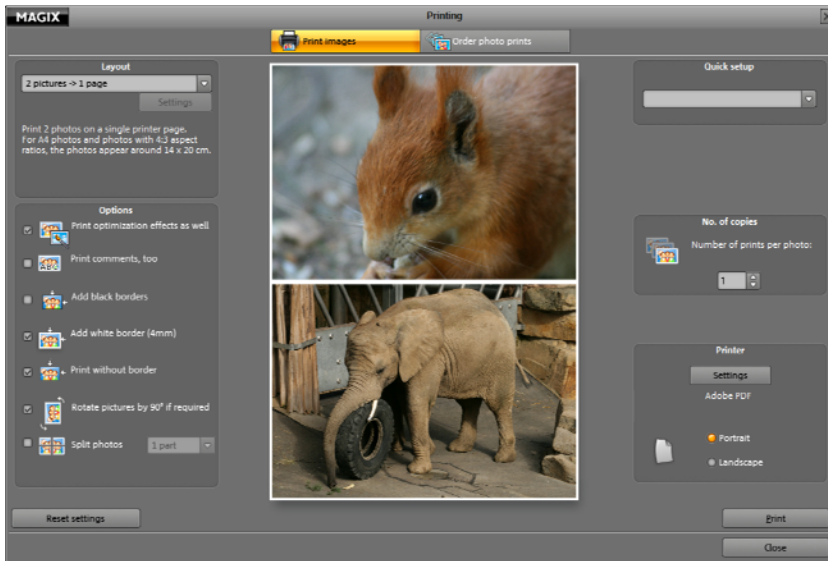
Step 2: In addition to photos, you can also add music you like to the album by clicking it or dragging it. The tracks are played in the order in which they are listed. You can move the links created in your album anywhere you like in the list until the picture and music order looks the way you want it to. The storage location of your original files is not affected by this in any way.

Step 3: After you have added all of the media you want to the album and arranged it, click on the first photo in the album and then on the "Slideshow" button to play back the slideshow.

Print photos

Tip: Use "Optimize" on MAGIX Photo Manager MX Deluxe's main screen to adjust images with redeye or color problems in order to get the best possible results.

1. Select all images which you would like to print.
2. To open the dialog, click the **"Print"** button.



Layout: You can set how many pictures should be printed per page. You can choose from between 1 and 8 pictures per page. The more pictures found on any page, the smaller they will appear. With "Contact sheet" you can have a type of index for all pictures printed. All pictures are ordered in mini format on one page. Of course, you can also print your pictures in standard formats (9x13 and 10x15).

Options: Activate options by checking them off (and leave those unchecked which you don't want to activate). For example, if you've saved comments on an image and want them to be visible on the printed page, then activate "Print

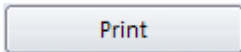
comments". If you've optimized several images or added effects, place a check next to "Print optimization effects" so that the adjusted photos appear as you want them to. Click on "Default settings" to reset things to their standard values.

Quick settings: This displays several typical settings for print jobs like posters and postcard puzzles, etc. Use one of these settings and you will have to make sure that there are no adjustments to the settings under "Options".

Copies: Set how many copies are to be created for the current print job.

Landscape format: Activate this button to print the image in a landscape (horizontal) format.

Setting: Open your printer's settings and customize them to meet your requirements.



Click "Print" to start the print process.

Present your photos

Digital photos on the PC should not be the goal in itself. For this reason, MAGIX Photo Manager MX Deluxe offers an entire range of possibilities of what to do with your photos:

Burn

You will often want to burn your photos to disc, e.g. to present them on a friend's PC. Click the "**BURN**" button to get started.



In the disc selection dialog, you can burn selected images like normal to CD or DVD ("**CD/DVD**" option), or you can select a special presentation method.

- **SLIDESHOW:** This enables automatic playback of individual photos on a PC. MAGIX Photo Viewer will be burned to the disc for this purpose.
- **WMVHD:** This converts your media into a high-resolution video file for optimum playback quality on a PC.
- **JPEG DISC:** This feature enables automatic playback of individual photos on TV via a compatible DVD player.

Export

Other presentation options can be accessed via the "**EXPORT**" button.



Depending on whether or not you have selected individual photos or an album, the export dialog offers different options (you can select an album by clicking on one of the displayed photos in the album display to the right). A couple of examples:

- **Screensaver:** To do this select individual photos, click on the "**EXPORT**" button, and then select "**CREATE AND INSTALL SCREENSAVER**" – and voilà! – your slideshow will be flickering on your monitor while your computer idles.
- **Desktop background:** You can create your own desktop show in the same way. The photos will be displayed in a slideshow as a desktop background. A great function if you just can't decide which one is your favorite picture!
- **Mobile devices:** If you want to add new pictures to your portable player, select "**MOBILE DEVICES**" in the export dialog for albums, or for individual images the option "**TRANSFER TO MOBILE DEVICE**".

Online Album

You can also put your pictures from MAGIX Photo Manager MX Deluxe directly onto your own photo website and then present them to friends with a link.



Use the "**ONLINE ALBUM**" button to access your online album at any time if you want to provide it with new content.

- **Step 1:** Select the media which you would like to upload (photos, music, videos, or even a complete album).
- **Step 2:** Sign up using your email address and a password for MAGIX Online Album. If you haven't registered yet, then you can do so directly in a few steps.
- **Step 3:** Enter which resolution the pictures placed online should have.
- **Step 4:** You can customize your personal web page individually. By sending an email link, an e-card, or a photo gift, you can send messages to your friends and invite them to visit your Online Photo Album.

Further information and help can be found at www.magix.com

Photo prints

Digital is good, but holding something in your hands is even better. For this reason, you should be able to quickly get your hands on high-quality prints when you want them. To do this, use the integrated MAGIX Online Print Service.



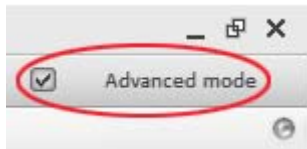
Click the "**PHOTO PRINTS**" button. Single photos or whole albums can be easily uploaded for printing. For more information and current prices and offers, please visit www.magix-prints.com

Interface – The layout of MAGIX Photo Manager MX Deluxe

This chapter will provide you with an overview of the areas and key functions available in MAGIX Photo Manager MX Deluxe and where to find them.

Advanced mode & basic mode

Many advanced mode functions will not be necessary for every process in MAGIX Photo Manager MX Deluxe. For this reason, you can choose to limit the program to basic functionality.



All advanced mode functions will be hidden in basic mode, they can always be shown again with a simple click.

Basic mode interface



Additional functions in advanced mode which will be hidden in easy mode:

- Menu „Database“ (view page 118), „Security“ (view page 121), and „Tasks“ (view page 123)

- Category tab (view page 37, view page 17), database tab (view page 38) and file information tab (view page 41)
- „1:1“ and „fit“ in the photo overview buttons (view page 44)
- In the "Optimize" area: Advanced functions (view page 52) for image editing and Edit image externally (view page 54)

Toolbars



Import: Opens the import dialog. Once you have connected your external device (view page 61) (e.g. digital camera), all pictures will appear here automatically and, if desired, they can be copied into the corresponding folder.

Or switch to the Online media (view page 63) area and download images from your online album.

In the Folders (view page 64) area, you can enter a folder to be added to MAGIX Photo Manager MX Deluxe's database.



Selection: MAGIX Photo Manager MX Deluxe finds suitable pictures for you. Choose between "Create representative selection (view page 82)", "Recognize faces on pictures (view page 80)", and "Find similar pictures (view page 77)". This saves you from having to take the time to sort manually.



Export: Exports (view page 69) the album or one or more selected photos as videos, desktop backgrounds, screensavers, and more.

Or load your media into your Online Album (view page 71) to make it available to everyone.



Print: Print images (view page 26) gives you the option of printing your images at home with your own printer.

Switch to Order photo prints (view page 85) to order your photos for delivery to your home with a few clicks.

Or create a photo album with your images for special occasions.



Burn: This button opens the burn dialog. Select which format you want to use to burn your files to CD or DVD.



Slideshow: Opens MAGIX Photo Viewer (view page 85) and starts the slideshow with the selected photos.

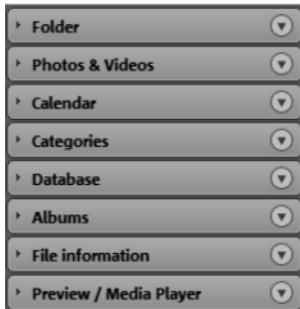


Online Album: Don't just upload your media to your Online Album via Send media (view page 98), manage it too in MAGIX Photo Manager MX Deluxe via Manage media (view page 100).



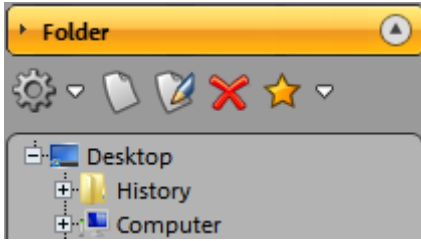
Order your photos (view page 85) to your home with just a few clicks via the Internet. You can order photos, posters, printed t-shirts, photo albums, or other great gift ideas.

Navigation and info tabs



The navigation and info tabs in the Photo Manager allow you to organize the data in the form of folders and database entries.

Folder



"Folder" displays the actual existing file system of your PC. You can open every folder and show its contents to navigate through the structure of your PC. Every folder can be opened with a mouse click.

Button



New folder: Creates a new subfolder in the selected folder.



Rename selected folder: Use this button to open a small dialog where you can change the name of the selected folder.



Delete: Deletes the selected folder.



Add to favorites: Pressing this button adds a folder to your "Favorites" folder. The list can be launched via the little arrow.



Launch the Explorer's functions: Besides the above-named functions, there are also:

Copy into folder: The previously selected photos will be copied into the chosen folder, and you can either specify this directly or select it using the folder symbol.

Open Windows Explorer: The selected folder will be opened with the Windows Explorer.

Photos and videos



This tab contains a list of all folders with photos and/or videos which were read by MAGIX Photo Manager MX Deluxe (also using its search function).

Important! It is not the listed folders, but rather the actual file folders that display the connections to the file folders, as is the case with categories. Changes are not related to the entries in the list, but rather the folders themselves! If you delete a folder here, then it will also be deleted from your computer...

Buttons



Adding a new folder is fast and easy.



Rename the selected folder.



Arrange the folder according to specific characteristics like name, size, date, etc.



Delete the selected folder from the database and from your computer.



Launch any of the functions which are available to you for folder management. Besides the functions named above, you can also:

Change the date of creation: This is most important for sorting

according to date. Correct information about the folder if it is not correct.

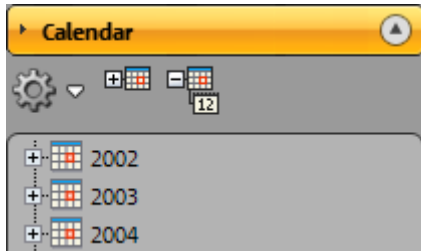
Set preview images for folders: Specify preview images here which make the contents of a folder clear.

Hide folders: You can hide folders if you do not want them to be displayed. They won't be deleted from the computer.

Hide all music folders: Many music folders contain 1 or 2 images for the album's cover. For this reason, these folders are normally listed here. If this option is activated, then all folders which contain more music than image files will be hidden.

Show hidden files: If you have hidden folders, then you can display them again later. Maybe you're looking for a certain image which may be hidden, or you would like to show a folder again. The "Show folder" option will appear in the folder's options menu.

Calendar



The "Calendar" folder organizes photos by date. Clicking on a specific date in the calendar, displays all photos from anywhere on your system that contain the selected date information.

You can also click on the year or the month. Then all the entries for the selected year or month will be shown.

Functionality: For photos from digital cameras meta information, including the date of creation, is recorded in the file when a photo is taken. This information is the basis of the calendar function. Picture files that don't have any such meta information will be ordered according to the date they were copied to the hard disk.

The ordering of the calendar is based on when the photos were taken.

Hierarchical order of the calendar: As the top-most level only the years are listed out at first. By clicking on the plus in front of the corresponding years, months can be opened. Now click on the plus again to see the days.



Expand all: Clicking this button expands the display to all levels: years, months, and days.

Collapse all: Clicking this button reduces the levels displayed to only the top level (years).

Categories



In the "Categories" tab, you will find themes for sorting your files.

Categories have been submitted in MAGIX Photo Manager MX Deluxe for you. These may be deleted or renamed as you see fit. A picture may also be assigned to several categories.

Please note: The categories are not "actual" file folders that you create on your hard disk, but rather individual links to files that could be found anywhere on your system.

Buttons



Add new categories simply and easily.



Give existing categories a new name.



Delete categories. The images which are assigned to this category will not be deleted.



Activate this function and click on the images which should be assigned to the active category.



Activate the eraser tool and delete the category assignments by clicking on them. The images will not be displayed any longer in the category.



Launch any of the functions which are available to you for category management. Besides the functions named above, you can also:

Large icons: Display the icons for categories either large or small.

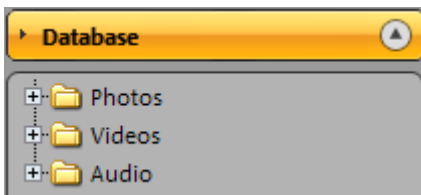
Summarize multiple selection: Select multiple selections to determine whether or not all images in the respective category should be displayed (large selection), or only the images which were assigned to each of the selected categories (small selection).

Automatic categories

MAGIX Photo Manager MX Deluxe can automatically assign your photos to specific categories. Select a folder or different images and activate the "Automatically assign images to categories" in the "Edit" menu. Images will then be analyzed for certain image content and sorted into corresponding categories (e.g. night, sunset).

This function should be understood as a rough presorting feature. Not all images are always correctly sorted, and sometimes they appear in two completely different categories. This depends on the diversity of the photo's subject, which may be interpreted differently.

Database



The "Database" area opens the MAGIX program-compatible media database. This shows all (used) folders in which you can find your files like photos, music and videos and can also be used with future MAGIX products.

These folders are "Virtual database folders" with which you can manage your photos and the categories. They display the properties according to which photos and other media files are sorted.

Change properties

Using Drag & Drop

You can move complete folders by "Drag & Drop". The properties of the photos and files contained are changed automatically. For example, you can move the folder under "Year > 2003" into the folder "Year > 2005". This way every file's year will be changed to 2005 in the moved folder.

Change properties

You also have another option: Select the folder where you want to change the photo and file properties.

Select the corresponding photos or files from the photo overview.

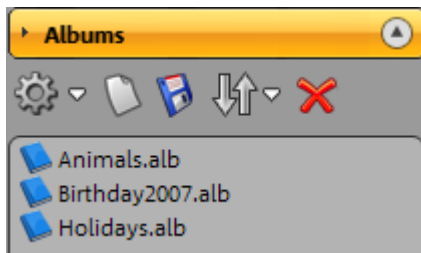
Right-click on one of the selected entries to open the context menu and select "Properties".

In the dialog displayed you can change the properties.

After closing the dialog with "OK", the tree structure in the database is updated accordingly.

Note: All changes relate solely to the "virtual database folder" and the properties of the files. The folders on the hard disc remain unchanged!

Albums



"Albums" contains all of your playable photo albums and those which you created. If you haven't opened this view, then a mouse click on an album will load it in the center of the screen (Photo overview).

Settings

Photo album settings can be changed via the context menu (right mouse click) or via the "File -> Options" menu. You can open this dialog via the keyboard shortcut "Y".



New: A new, empty photo album.



Save as...: The current photo album will be saved.



Sort: Depending on whether your albums should be sorted according to name, creation date, date last modified or length, you can determine these details here.



Delete...: If you no longer require an album (maybe you have placed all of the photos in another album), then you can use this function to delete it.

Note: If you delete an album, only the link to photos in the album will be deleted. The actual photos still remain in the folders of your PC.



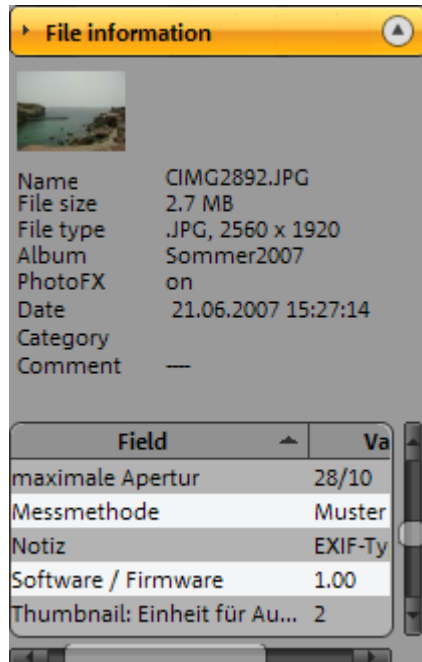
This button opens the menu, which not only contains the functions of the buttons, but also further commands for photo albums.

Open...: Opens a previously saved photo album. A file window is opened for this purpose with which you can control the memory folder of the photo album.

Rename: If you would like to give the currently selected photo album a new name, then click here and enter a more accurate name.

Properties: Here you can open a dialog which lists all of the characteristics of the album. You can always customize these according to your wishes.

File information



Here all available information on the selected files is shown. This information is also at your disposal in the database view under "File information".

Preview / Media Player



Use the preview (Media Player) to view pictures, videos, etc. in mini format. To do so, click on the picture in the photo overview or in the album view. Now

you'll see it in the preview. You can also listen to music files or watch videos here. Simply select them in the same way and click on the playback button in the preview.

If you want the view to be larger so that you can see the details of a picture, simply click on the symbol to the far left. This opens the Slideshow Monitor.

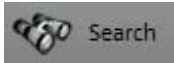
Photo overview

Files in a selected folder display are shown with preview images in the photo overview window.

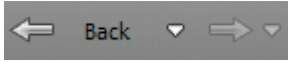


You can select the photos and other media files in the overview window, move them to the database folders, assign categories to them, use them in albums, and so on.

Buttons in general



Search opens a comprehensive selection dialog box with options for finding specific media files on your hard drive or from in the database.



Forwards/Backwards: Look through the recently used views. These buttons include the "Database", "Category", "Calendar" and "My photo albums" views.



Use this button to change to **My Computer** and navigate the folder structure on your PC.



Upwards: This button accesses the parent folder.



Several functions for that change views and make it easier to operate MAGIX Photo Manager MX Deluxe are hidden here.

Selection aid (check boxes): If this function is activated, small check boxes will be displayed to the left of the music tracks which can be used to select the tracks. This makes multiple selections easy.

Audio commentary: If you have a microphone connected to your PC, then you can record and save commentary for each of your images. In "Display", you can set whether comments should be shown or hidden and when they should play. This function can be found in an images context menu and via the "Edit" menu.

Background color: Do you prefer more colors? Then simply change the design of the background in MAGIX Photo Manager MX Deluxe to suit your tastes. Just enter whatever color you would like for the album and photo display.

Open ratings window: You can open this scale for rating files. Activate this feature and highlight a file. Move the mouse to lower margin of the selection and stars, used for rating, will appear.

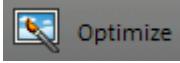


Sort by: This button sorts the song order. You can do this by clicking on the table S corresponding column header in the "Details" view.



The album view (view page 46) can be displayed/collapsed. If you would like to have more room available for the photo overview, then close the album view.

Buttons below the overview



Optimize: Opens the image optimization dialog box. Read more on this topic in the "Optimize view" chapter.



Rotation: The bottom of the window features two buttons for adjusting the horizon in an image. Photos may be rotated in either direction.



Delete: Deletes the selected photos from your computer.



The **arrow** buttons enable you to browse **forwards** or **backwards** in the current folder. These buttons can also be used during playback of a slideshow.



1:1 The current photo is shown in original size.



Fit (image to window size):

This option enlarges the image so that it completely fills the slideshow monitor.

Zoom: You can zoom into and out of the image to view details by adjusting the controller.



Sharpen display: present your pictures with MAGIX Photo Manager MX Deluxe and even sharpen the contrast; the original picture will not be changed in the process. If you would like to optimize the original picture in general, then additional functions are available via "Optimize" (view page 47).

Show photos

All the photos in a folder are shown as thumbnails in the overview window.

Managing the view and additional functions of the photo view



Here you can specify what should be shown in the photo view: Only the thumbnail view of the pictures, all details of the pictures or with extra film strips, i.e. select the view you find the easiest to read.

In addition, you'll also find the "Marker help" function, which simplifies the selection of files. When this function is active the files can be selected by ticking the box at the top right of the corresponding file.

File category: If you assign categories to your pictures as well, you can activate the function here so that the corresponding symbol will appear beside all pictures to which a category has been assigned. This way you always have the complete overview in MAGIX Photo Manager MX Deluxe of which picture can be found in which category.



Sort by: You can sort your albums here according to name, date of creation, date of modification or length.

Selecting photos

Selecting all photos:

You can select all the photos in the overview window using the Ctrl + A keys.

Select multiple photos that are not directly behind one another:

In MAGIX Photo Manager MX Deluxe multiple files can be selected with a click of your mouse without having to use your keyboard: To do so, click on the small box to the top right that appears when you place your mouse over a picture. When you tick this, the picture will remain selected, even if you click on another picture.

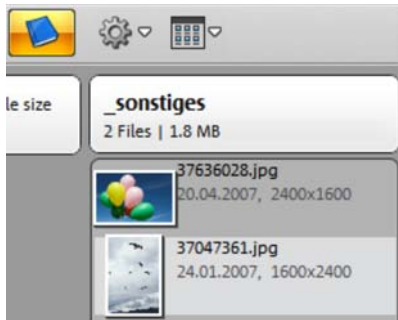
To select multiple photos that are not positioned after one another, hold down the Ctrl key on your keyboard click on each file you want.

Note: It may be useful to sort the photos differently so that the desired photos are displayed one after the other and can be selected quickly. You can find more information about this topic in the Show photos (view page 44) chapter.

Selecting multiple photos (one after the other):

Click on the first photo, press the Shift key on your keyboard and select the last photo while keeping the key pressed.

Album view



In the program section to the right, you can open the album view at any time if you require it to create or edit albums. Here, pictures can be quickly and clearly sorted, ideal for specifying the order of pictures.

Album view buttons

You can open the album view on the right side of the screen at any time if you want to create or edit albums.



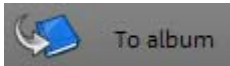
Open and close this section via the album view button.



Press this button to open a menu to set up and save new albums or open previously created albums.



You may also specify how you would like to show your pictures via the album view.



If you save an created album you've just made, it will be displayed as the current album in the album view. If you select the pictures while in photo view and click the "Add to album" button, they will be assigned to this album.

Create, fill, and save a new album

Step 1: Open a new album



Click this button first to open the album view (in case it isn't open yet). A new, empty album will be created.

Step 2: Fill the album with pictures

There are 3 options for assigning images to an album:

A) Simply select the pictures from the photo overview that you want to add to the album, and then drag them into the album view.

B) Select an image and press "S" on the keyboard.



C) The currently selected photos can be assigned to the open album by clicking this button.

Step 3: Save the album



To save the album, click this button again and then select "Save album..."

Specify where you wish to save your slideshow on your PC and what it should be named.

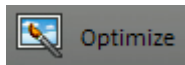
Change the order of the photos

You can easily change the order of the slideshow via drag & drop. You can choose multiple photos by pressing down the Shift or Ctrl keys on the keyboard so as to move photos together.

Use music

Should you need a soundtrack for your slideshow you can drag an audio file, just like a photo, from the overview window into the slideshow. Depending on the length of your slideshow, you can add a number of different music tracks as a slideshow soundtrack. The first music track will be played first.

Optimize view



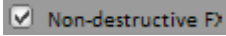
The easiest way to open the optimize view is via the "Optimize" button (in the bottom portion of the photo overview (view page 42)) or in the "Edit" menu

All changes will be displayed in real time, and the original image will not be overwritten, provided you have the "Non-destructive" button active. So go ahead and experiment until you have results that are pleasing - your precious original will remain the same. All effect settings are saved as separate files with the extension *.jpx.

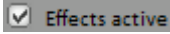
If you would like to calculate your changes into the original image, then click on "Fix effects". This will overwrite the original image and these optimization steps will not be able to be undone.

Note: Edit a digital photo which contains a EXIF image information and this information will be preserved if you save the optimization effects.

Buttons



Non-destructive FX: Deactivate this function, if you would like your optimizations to be applied immediately. If it remains, then you can always undo the effects of your work.



Effects active: Switch global optimizations on or off here. This way you can compare the result with the initial state.



Clicking on this button opens the slideshow monitor for viewing your pictures. A repeat click on "Filter" closes the slideshow monitor.



To leave the optimization view, either click on the optimize button a second time or simply on the X.



Undo/Redo: These buttons let you undo or redo individual effect settings. Even if a different photo has been selected in the mean time, MAGIX Photo Manager MX Deluxe remembers the order in which the effects were used.



Please select a preset

Here you can use the presets for editing your pictures. These are included as part of the program and are perfect for typical image errors, but they can also be created individually.

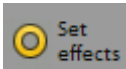


If destructive editing is activated you can save the effects in the current photo using "Save effects".

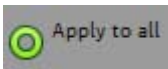
If destructive editing is not activated the following buttons will appear:



Undo all: This button allows you to set all previous settings in the optimize view to neutral values.



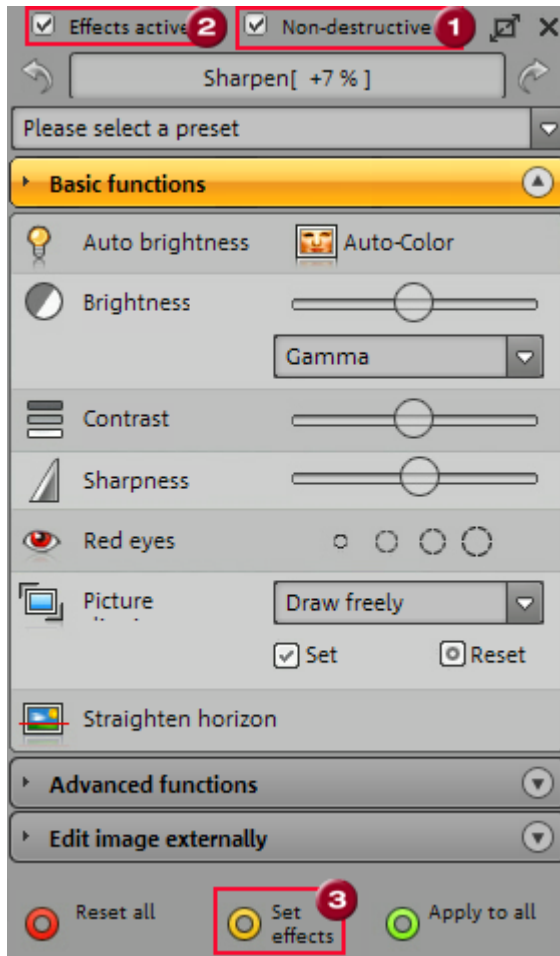
Set effects: The effects that are set up are saved in the photo and cannot be undone at a later stage.



Apply to all: With this button you can apply the current settings to all pictures in the current folder. After clicking on this button a preview window with all the picture files of the folder opens. You can choose if each picture file should use the current settings that are in use in the optimize view.

Non-destructive and destructive work

Besides the purely non-destructive application of effects, it is now possible to switch between non-destructive and destructive mode for image files. In destructive mode, all changes made will be applied directly to the original image file. This often makes it easier to use such files in other programs or to transfer them to third-party programs.

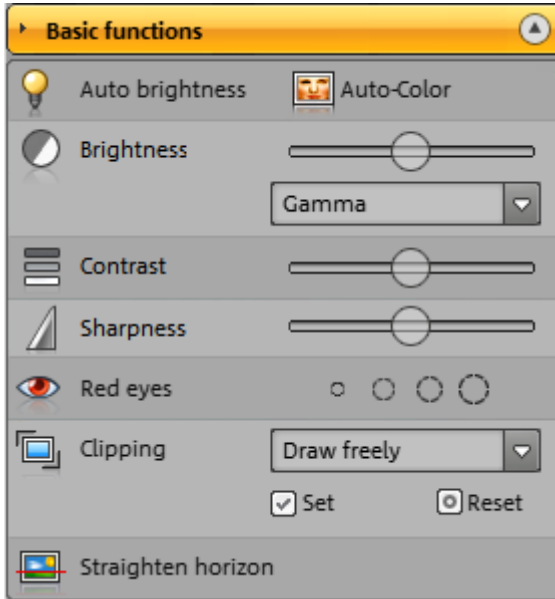


1: Check this field to activate non-destructive editing. This allows effects to be undone.

2: Remove the check for "Effects active" to view the original image. This makes a fast comparison between the original and the edited images possible.

3: If you would like to fix the effects to burn edited images, etc., then click here. The original file will be overwritten and cannot be restored.

Basic functions



Auto-exposure

These options use automatic exposure correction.

Auto-color

These options use automatic correction of the color ratios, that is, all color channels (red/green/blue) are brought to optimal brightness. You can achieve the best results with photos that have lots of colors.

Photos with intended discolorations (for example, sunsets) become grey very quickly. In these cases you should use "White balance" or "Auto exposure".

Tip: These settings can be used well in conjunction with the "Picture view" option. At best you should select a section with a relatively homogeneous coloring, for example, the sky. Then select the option "Auto color" and click on "Reset picture clip". If you don't like the result, you can always revert to the previous state using "Reset". This method leads to amazingly creative results.

Brightness

You can select various types of brightness settings with the fader. However, only one is possible at a time.

- **Gamma:** This method sets the brightness of the areas that can be discerned by the human eye. This is advantageous insofar as shadows remain dark (as opposed to turning gray) when brightening up photos, and that very bright areas are not influenced when darkening an area.
- **Shadows/Mid tones/Lights:** This brightens up/darkens shadows, mid tones and lights. If, for example, you wish to darken shadows, but want to leave the other bright areas as they are (unedited), moving the "Shadow" fader to the left offers the best results.
- **Linear:** This is the "normal" brightness setting. The photo is brightened/darkened uniformly.

Tip: Nearly all photos can be improved by a minor gamma correction. Low values create darker, warmer colors; higher values lighten up shadows.

Contrast

Low contrast values whiten photos and remove exaggerated contrasts in brightness. Higher values increase the brightness contrasts and can, if overused, distort the photo.

Focus

You can set the focus of the picture using the sliders. If the focus is increased, basically an enhancement of the edges or structures will result. When lowered, a blurring effect is used.

Red eyes

Use this button to automatically correct red eyes with a click of your mouse.

You can also adjust red eyes manually. There are various paintbrush sizes available for this: Move the mouse pointer to the middle of the red eye. Move the paintbrush into the desired size by holding down the left mouse button.

Now you can retouch red eyes at the relevant points. At this point a preview is helpful. Should the effect be too weak, you can click on the eye repeatedly to increase the effect.

Tip: Using the mouse wheel you can zoom in and out of the photo. Here, you can zoom into the area where the cursor is. This way, you can make corrections much more precisely.

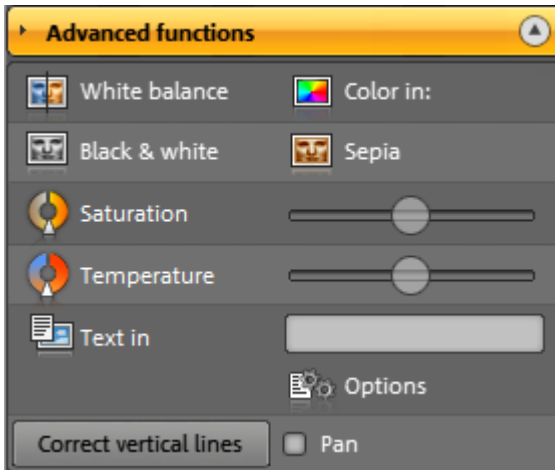
Crop image

You can use this option to crop the image by holding down the left mouse button. To use the cropped image (instead of the whole picture), click on "Set". You can revert the setting to its original state using the "Reset" button, that is, you can view the complete picture once again.

Straighten horizon

This button lets you straighten crooked pictures. Simply draw a line using the mouse along the crooked horizon. The picture will be rotated automatically so the horizon line runs horizontally. The sides will be clipped.

Advanced functions



White balance

Pictures, for example, of clouds or snow, often contain color faults. You can use this option to carry out manual white balance. This means that white areas become really white. After activation, use your mouse to select a small area in the picture that should be completely white in reality. All areas in the picture will then be adapted to the color automatically.

Color in...:

Click "Color in..." to open a small dialog: In the color field, you can adjust the complete coloration of the picture, e.g. to remove a blue tint. "Reset" reverts the point in the color field back to its neutral setting.

Black/White

Click to make color pictures black & white.

Sepia tone

Transforms color photos into black and white photos and adds yellow to the picture to give the impression that it's on old paper.

Saturation

With saturation you can shift the intensity of the colors. If a picture is particularly color-intense in comparison to the original, you can correct this effect with the saturation fader.

Color temperature

This slider may be used to correct the color effect to make the subject appear in real color, i.e. without any color distortion. Use the slider to shift the portions.

Text in picture

Enter a caption for the image here. If the text exceeds the image's borders, then the font size will adjust so that the amount of text will fit on a single line.

Click on the text with the mouse cursor and move it by clicking it with the left mouse button to the position you want on the image.

Text commentary options:

- **Font name, size, color:** With this button you can access the selection dialog for the font size and style. The "Color" button accesses the selection dialog for the font's color.
- **Shadow:** In this section you can insert shadowing on the lettering and set the size of the shadow (offset). Use "Color" to adjust the color of the shadow.
- **Background:** In order to make the text more easily readable, it may be necessary to place a color-filled frame behind the text. This makes it easier to see.
- **Scrolling text:** Activate this option and the text will be shown as scrolling text (if it is long enough). In any case, the text will not be present during exporting or printing.
- **Image comments:** Enter the desired text here.

Curved lines

This function may be used to correct curved lines in pictures resulting from perspective distortions. "Curved lines" are lines and edges, which run together in an image, although they are parallel to each other in reality.

Select the corresponding image and click "Curved lines". Calculation will begin and a copy of the image will be produced without curved lines.

Pan

Click here if a panorama should run from left to right in fullscreen. The panorama will no longer be shown in full width, but rather panning from the left to the right. This feature must be set for each panorama individually.

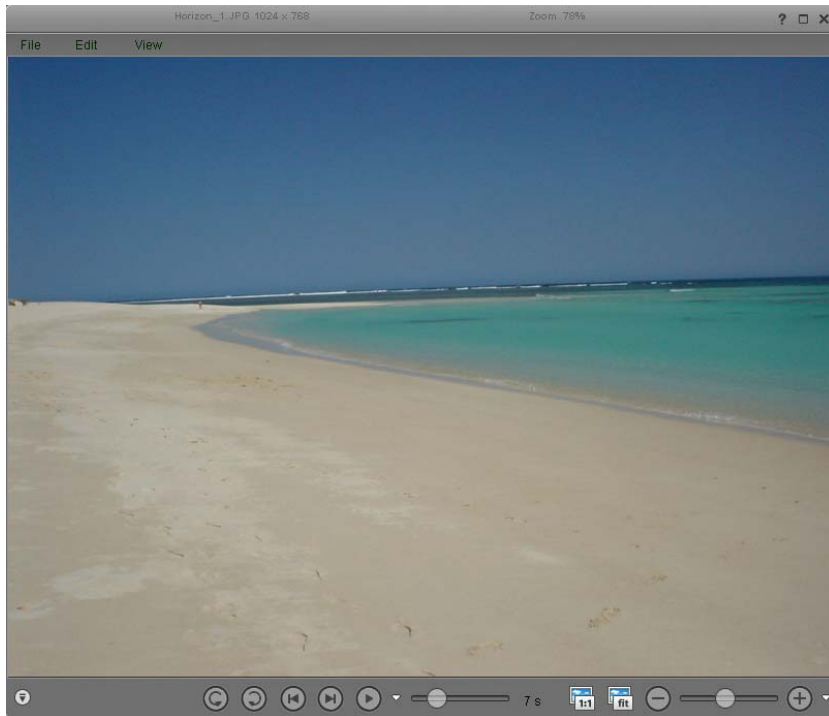
If a particular panorama should not be played back in this manner, then remove the check mark from "Options -> Camera pan" again.

Edit image externally

You can select different tasks in the "Edit image externally" tab. The "Photo Clinic" button opens the current image in MAGIX Foto Designer 7, which then performs the selected tasks.

Slideshow monitor

The slideshow monitor can be opened in the overview by double-clicking on a photo. Here you can run your slideshow in "large format" and it's possible to make further adjustments using the "Edit menu".



Menus in the slideshow monitor

File

Save photo as...: The photo will be saved under the name you enter.

Export photo...: The photo will be exported. You can find out more about the export dialog in the "Export: Export photo album" chapter.

Keyboard shortcut: Ctrl + E

Copy photo: The displayed photo will be saved as a graphic into the clipboard. This way you can use it in every program that can import (via "Insert") from the clipboard.

Close slideshow monitor: Close the large view of your images and return to MAGIX Photo Manager MX Deluxe main interface.

Keyboard shortcut: V

Edit

Here you'll find lots of commands from the optimize view that can be used to spice up your photos.

Note: None of the available effects change the original photo on your hard disk. They are calculated again each time the files are accessed so that the settings can be undone every time.

View

Here you can access various settings for the slideshow view sizes. Under "User defined monitor size" you can enter the desired dimensions.

Slideshow options: You can specify how long the selected photo should be displayed and what the transition to the next photo should be, if at all.

Shortcuts

File menu

Export photo	Ctrl + E
Close slideshow monitor	V

Edit menu / Context menu

Reset all effects	Shift + F
Rotate 90° clockwise	#
Rotate 90° counter-clockwise	ä
Increase contrast	P
Reduce contrast	O
Increase brightness	+
Reduce brightness	ü
Sharpen picture	Ctrl + H
Soften picture	Ctrl + G
Increase saturation	Ctrl + W
Reduce saturation	Ctrl + Q
Increase color temperature	Ctrl + '+'
Reduce color temperature	Ctrl + ü
Sepia tone	Shift + S
Black/White	Ctrl + B
White balance	Shift + W
Straighten horizon	H

Remove red-eye	R
Crop image	Q
Set current sections	W

Slideshow context menu

Close slideshow monitor: Close the large view of your images and return to MAGIX Photo Manager MX Deluxe main interface.

Keyboard shortcut: V

Next/Previous image: Change to the next or previous image in your slideshow or open folder.

Leaf per mouseclick: If this function is active (check mark displayed to the left), then you can change to the next image by clicking the left mouse button or change to the previous with the right mouse button. If you would like to deactivate this function, then hold the right mouse button down, circle over the function with the mouse cursor and release the mouse button.

Slideshow monitor buttons



Rotation: Use these buttons to turn your images. Portrait images may also be set properly with this function.



Arrow buttons: Flip forwards and backwards within the selected folder using these buttons. These functions can also be used during playback of a slideshow.



Start/Stop: Starts/stops playback of the slideshow.



1:1: The current photo is shown in original size.



Fit: (Fit image to window) This option enlarges the image so that it completely fills the monitor.



Display options: Open this menu to adjust settings like the display time and duration of transitions. The type of transition can also be set.

View duration



Use the slider to adjust the display time of a photo during slideshow playback without having to open the dialog.

Zoom



Use these buttons and the slider to zoom in and out of the picture. If your mouse has a scroll wheel, this can also be used to zoom.

You can move the picture with your mouse in a zoomed-in picture. To do so, click on the picture and simply move the picture while holding down the left mouse button. The buttons on the edges can be used to access a small menu featuring different zoom stages (1:1, 1:2, etc.).

Sharpen display



Present your pictures with MAGIX Photo Manager MX Deluxe and even sharpen the contrast; the original picture will not be changed in the process. If you would like to optimize the original picture in general, then additional functions are available via "Optimize".

Fullscreen mode

You can display the picture in fullscreen by clicking the "Maximize" button in the top right. Move the mouse between the upper or lower borders of the screen in fullscreen mode; this will make the buttons reappear.

Flip through the photos in the folder using the arrow keys. Clicking the fullscreen symbol takes you back to the normal view.

More useful functions

Database

MAGIX Photo Manager MX Deluxe creates a database of your files, so you can access them quickly and easily.

Note: If you delete files from your PC they will no longer be found in the database. This database will also be used by other MAGIX programs with databases,

How to add files to the database:

- Either press the "Import" button and select "Folder (view page 64)", or
- Proceed to the menu item "Database -> Add folder". (view page 118)

Note! The Database is actually composed of paths to the original files. The files remain at their original positions, and no copies are produced. If you launch a file via the Database, then **you are not opening a copy, but rather the original** file via the link!

This allows you to **search for a specific file** (view page 77) in a database.

- Press either the "Search" button or
- search via the menu item "Database -> Search Database..."

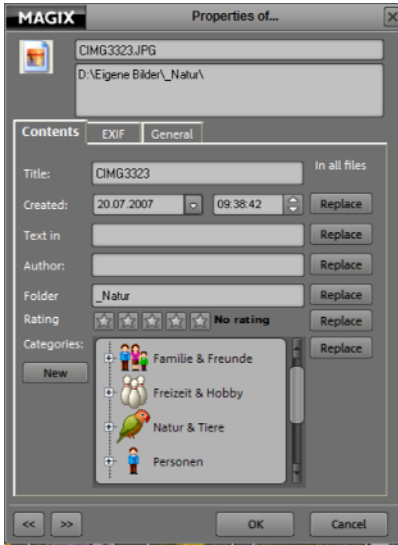
If you work a lot with MAGIX Photo Manager MX Deluxe and frequently add to or delete data in the Database, then it is possible that the Database contains old data links, causing it to become outdated. To update it, simply use the "Optimize database" function in the "Database" menu. Old entries are deleted and/or updated.

Additional database functions can be found in the "Database (view page 118)" chapter.

Adjust properties

If you want to check a music track for its properties or make changes, you can view the already available information and add more via the "Properties" dialog. All changes that you make to the ID3 tags will be visible here.

The dialog can be opened by right clicking on a file or via "Edit -> Properties".



Contents: In this tab you can find the most important file properties. You can change ID3 tag information simply by entering it here.

- Especially interesting is the ratings system for your pictures: 1 star = not so great, 5 stars = fantastic. The stars awarded will then be shown at the bottom edge of the picture and sorted accordingly into the tab "Categories -> My ratings".
- Another highlight is the ability to assign every image file to the right category directly.

EXIF: Data about the picture included by the camera, e.g. focal distance and resolution units.

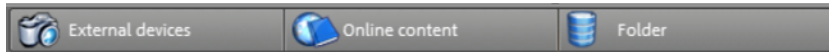
General: Further general properties of the file are displayed here, i.e. size, modification date, etc. They can't be changed.



You can also load several files simultaneously with the editor. Use the arrow buttons at the bottom to change to the next/previous file. The "Replace in all files" button applies changes to all selected files.

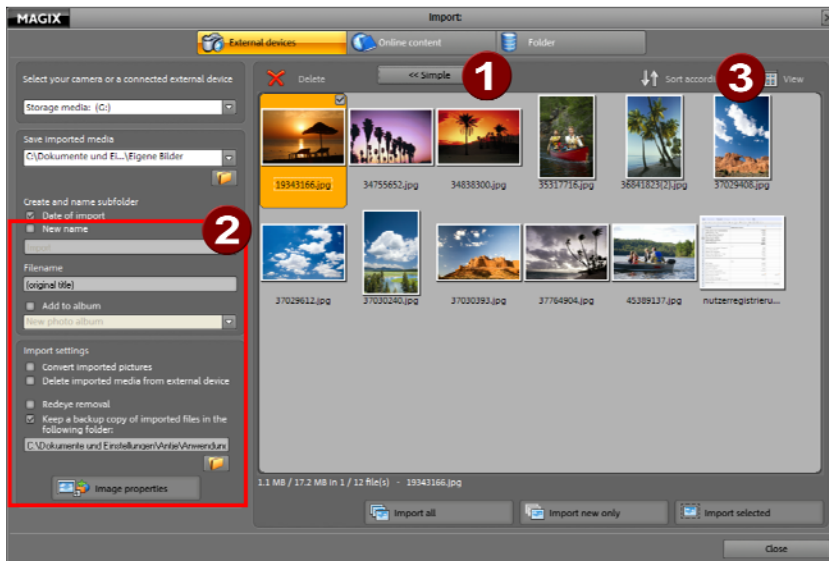
Import

There are multiple options available to you for importing your data into MAGIX Photo Manager MX Deluxe. Select the correct button for the desired import method.



Import from external devices

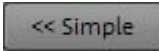
In MAGIX Photo Manager MX Deluxe you will find an easy to operate dialog for transferring your data over to your computer.



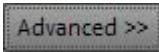
Connect the device to your computer, and MAGIX Photo Manager MX Deluxe will recognize it and ask you if you would like to open the import dialog, since you probably want to import files.



You can also open this dialog via the "Import" button.



You can switch between advanced and beginner modes with this button (nr. 1 in the diagram).



Note: When connecting external devices (e.g. mobile telephones, USB sticks, etc.), it's possible that these devices must first be recognized by your computer. Once your computer recognizes the device, MAGIX Photo Manager MX Deluxe can access it. If display of the device is problematic, then please refer to the product's manual or contact the manufacturer.

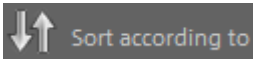
Additional import functions

Click on "advanced" and the following additional functions are made available:

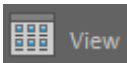
View buttons (nr. 3 in the diagram)



If you would like to delete the images from the connected device, then select them and click "delete".



Determine what the display sequence of the files should be: name, type, date of creation, etc.



Define which files should be displayed. For example, if you are looking for all of the files from a specific day, then the list view is often enough.

Additional saving and importing functions (nr. 2 in the diagram)

New name: If you would like to save your files in a subfolder when you import, you can define it here.

File name: Define how imported files should be titled. If you do not apply any changes, then they will remain titled as they are on the connected device.

Add to photo album: Imported files can be assigned directly to existing photos albums. Enter the respective album here, if this is the case. This can save you time.

Import settings

Delete imported photos from the camera: All the files that you have imported with MAGIX Photo Manager MX Deluxe can be deleted from the connected device. Just bear in mind that they cannot be recovered from the device once they have been deleted...

Convert photos on import: You can edit photos as you import them.

Image qualities: Click here and a small dialog will open for you to add information such as author and category (new categories can be added). In addition, you can choose whether the EXIF creation date should be ignored, or if the photos should show the original EXIF date. If this is ignored, then the date of import will be defined as the creation date.

Import from your MAGIX Online Album

If you would like to load media from your MAGIX Online Album to your computer, then proceed as follows:



Step 1: Click the "Online Album" button.

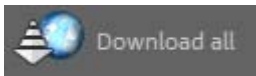
Step 2: Switch to the "Manage" screen and log in.
The dialog for managing your MAGIX Online Album will open.

Step 3: Go the album/folder which contains the media that you want to copy to your hard disk.
All media in the album will be displayed.

Step 4: Under "Save downloaded media in", enter the folder on your hard drive where the media should be copied.



If you only want to copy a few files from the Online Album, then select these and click "Download selected".



If you want to copy all of the media, then select "Download all".

Add folder to the database

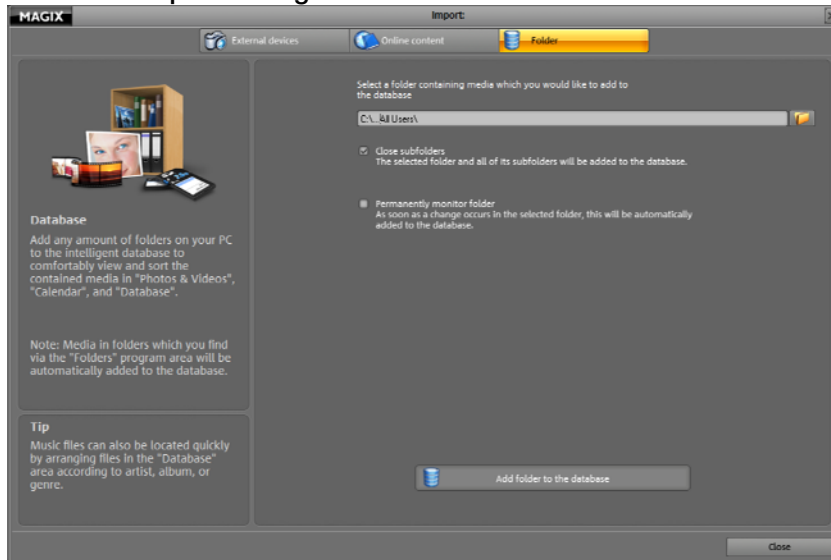
MAGIX Photo Manager MX Deluxe can add a specific folder on your computer to the database via the following options:

- A)** Click "My Computer" and navigate to the folder and MAGIX Photo Manager MX Deluxe will automatically add the files to the database.
- B)** Use the "Add folder" function in the "Database" menu. The import dialog will open.
- C)** Click the "Import" button and switch to the "Folder" screen. The import dialog will open.



Note! The database is only composed of paths to the original files. The files remain at their original positions, and no copies are produced. If you launch a file via the database, then you are not opening a copy, but rather the original file!

Database import dialog



- 1.** Enter the folder which contains the data which should be added to the Database.

2. "Close subfolders" is normally active (checked off) so that all folders included which contain images will also be transferred to the Database .
3. "Permanently monitor" is also normally active. So that a folder is always in the most up-to-date condition, it can be monitored permanently by MAGIX Photo Manager MX Deluxe, and changes to the folder will be reflected within the Database.
4. Click "Add folder to the database" to start the import process.



Create slideshow

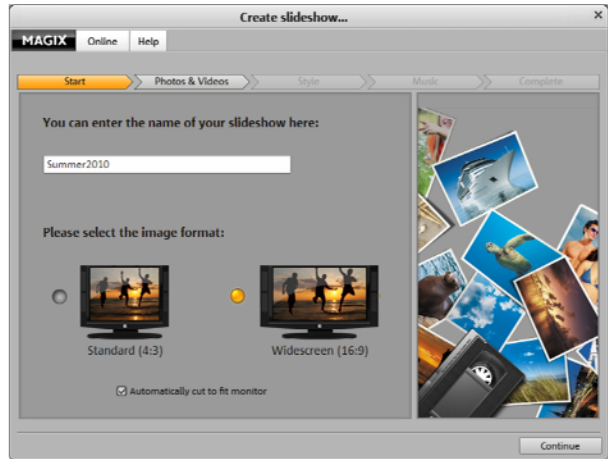
1. Select the picture and video files (if applicable) that you would like to use to create the slideshow, and then click "Export" on the toolbar.
2. In the dialog which opens, select "Create slideshows and videos from file(s) (YouTube upload, etc.)" in "Photos & videos", and then press "OK".
3. Activate the desired format. The dialog for creating the slideshow will open.

Possible formats:

- WMV
- MXV
- AVI
- RM
- MOV

Start

You can enter the name of your slideshow here. This name will be used as a preset title for the slideshow to be created. Specify the aspect ratio for the slideshow.

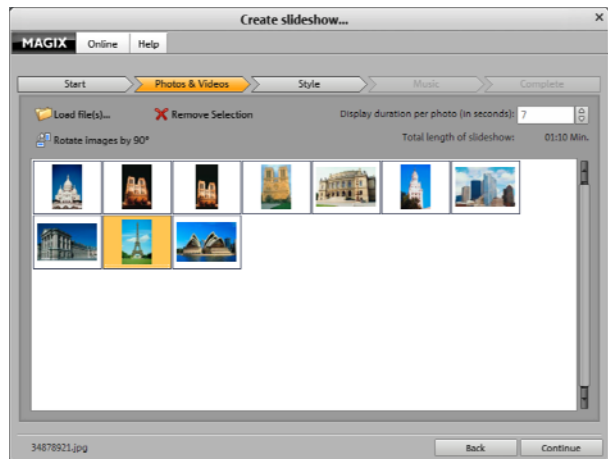


Cut to fill monitor automatically: This determines how MAGIX Photo Manager MX Deluxe behaves with photos that do not match the slideshow's format. Images that do not correspond to the slideshow's aspect ratio are adjusted automatically. The zoom factor is set in such a way that there are no black bars to the left or right or top to bottom.

Load files

"Load file(s)..." allows you to select photos and videos for integration in the slideshow.

"Delete selection" removes the selected photos and videos from the list. The sequence of photos can be specified via drag & drop.



Turn images 90°: The selected photos can be rotated 90° clockwise with this function. To turn a photo 90° to the left, this button must be clicked three times.

Display time for each photo (seconds): By default, photos are displayed for the time entered here.

Total length of slideshow: The approximate total length of the slideshow created is shown here. It adjusts to reflect any changes that are made.

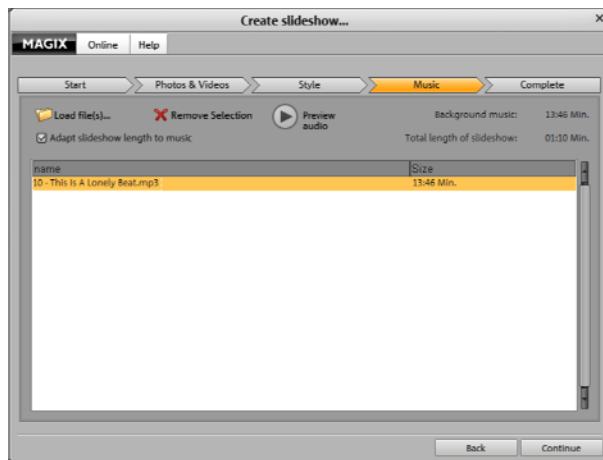
Style

Simply select one of the styles that best suits the theme of your slideshow. If you don't want any effects, then select the entry marked "No effects".



Music

You can select between the suggested pieces of music or one of your own by importing it into the list via "Load file(s)". If the slideshow is long enough, then all of the pieces contained in the list will be loaded into the photo one after the other.



The sequence of songs can be specified via drag & drop.

Preview: This button provides a preview of the selected song.

Remove selection: This deletes the selected song from the list.

To the right in the dialog, you can see the total length of the background music and of the slideshow. This enables you to see if other music tracks need to be loaded, e.g. the slideshow is longer than the music, and you don't want to repeat the music.

Presto!

In case you select WMV, MXV, etc., you will see the following options for exporting:



Exports the arrangement in the corresponding format and adds it to your video folder.

In case you select YouTube upload, you will see the following options for exporting:



You can upload the slideshow you created to YouTube directly from within MAGIX Photo Manager MX Deluxe.

The command opens a dialog for you to set the name of the slideshow for YouTube (default is the same as in MAGIX Photo Manager MX Deluxe), description, keywords (so-called "tags"), and the category for the video. You may also indicate whether the video should be private or public. After confirming your entry by pressing "OK", the slideshow will be exported and uploaded to YouTube. This is why you have to enter your YouTube account access data (username, etc.) to connect to YouTube. If you don't have an account, open your browser and go to YouTube to sign up for an account first.

If uploading was successful, your browser will open the info page for the video you just uploaded to YouTube to double check your description and tags. If everything looks correct, just leave this page and the new video is already listed under your videos. YouTube takes some time to process the video for online presentation, but after this period, the target group you have specified will be able to watch it.

Export dialog

You can export your slideshow in various video formats. The options available vary according to the selected format.

Export settings

Presets: These are the typical settings for the selected format and the most important applications.



You can save your settings by pressing the "Save" button and remove them by pressing "Delete".

This includes general export parameters like resolution, page proportions, and frame rate. Select the most frequently used values from the list fields; to set your own values click on the "..." button.

The "Advanced" button opens the specific settings for the selected video format.

"File" enables you to export your file to another folder than the preset one. "Overwrite file without confirmation" enables you to execute multiple exports of the same file.

Export

In the export dialog you can choose from four different areas: "Photos & videos", "MAGIX Online Album", "Creative", and "Forward".

Once you have customized your export settings in one of the areas, MAGIX Photo Manager MX Deluxe will remember these settings and will load them again the next time the program is restarted in a specific area. You can, of course, make modifications at any time to meet your requirements. The saving function is there to make your life easier, e.g. if you want to create the same video formats while using the same settings.

A general introduction is available in "Present photos (view page 28)".

Export files one by one

With this feature images and/or videos can be exported as files in various ways.

Target folder: Enter the folder where you would like to store your photos.

Change/Don't change file name: Lets you keep the original title names or assign a new name. All photos in a photo album are given the same name and numbered consecutively.

Overwrite existing files in target folder: If you have copied certain files into the same target folder and then repeat this process, then this process will overwrite the old file versions with the new ones.

Export options

Select how you would like to export. Depending on the method, the quality of the saved file will be adjusted accordingly (small = poor quality, large = improved quality). To the right of the export options, you can see the info text and the selected image size.

Copy originals: This option only copies the photos in the folder specified without editing them.

Additional profiles: Besides the main export options, you can see other options are available for exporting your files and adjusting their size.

Advanced settings

Adjust size: This option converts the photos into the selected target format defined in "Export options".

Shrink/stretch all photos to target size: This option converts all photos to the defined "target size".

Only shrink large images to the target size: This option reduces larger images as set in "target format"; smaller images remain small. This way no artifacts are created by enlarging smaller images.

Target format

This lets you choose a format for conversion. "More options" opens the quality settings of the respective format.

More options – Quality: This defines the size of the exported photos.

Effects

No picture effects: This option deactivates the optimize view settings.

Copy effect description file: All effect settings are saved from the optimize view as separate files with the extension *.jpx. When using this option, the file will also be copied to the target folder.

Render effects into pictures: If this setting is activated, the effects from the optimize view are included in the files. "Master Gamma" also includes the global brightness setting; "Write comment into image" includes the subtitles.

Create slideshows and videos from file(s)

If you want to create a slideshow from a number of files and have selected which type of video (video format) you want to create, open the "Create slideshow (view page 65)" dialog. You can apply settings step-by-step for professionally transforming your images into a slideshow.

The convenient **YouTube** upload feature is also located here. Select "YouTube upload" in the format dialog.

MAGIX Online Album

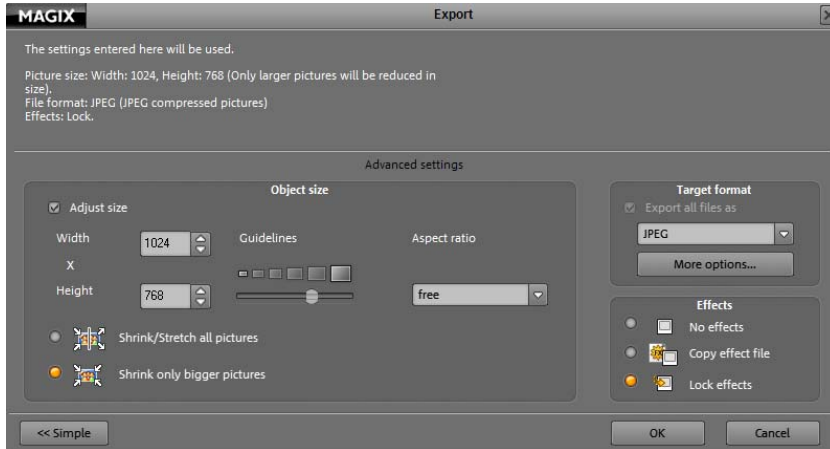
Send selected media to your Online Album: Log in to the MAGIX Online Album service and load your images into the album you want to show them to your friends and acquaintances in the Internet. The assistant will lead you step-by-step through the uploading process. After the process is finished, you can access your updated album online.

Creative

Create and install screensaver

So, you really enjoyed your slideshow? Then why not set up the arrangement as a screensaver? To do this, click on the "Export" button and select "Export slideshow as screensaver" – and voilà! – your slideshow is flickering away on your monitor during rest pauses. Any audio material in the slideshow will not be considered for export.

For a screensaver that you can actually watch, most pictures have to be adapted to a format suitable for screensavers. The following dialog opens in this case:



As standard, the size is set to 800 x 600, an aspect ratio of 4:3 is set. You can customize the sizes if you like.

By clicking on "OK" the export process will start. Once the screensaver is complete it will be installed on your system automatically.

Create and install desktop background

This option exports the images as a desktop background. Helpful, if you just can't decide on a favorite picture.

Audio material from the slideshow that may be available will not be considered. The desktop background is then installed in the system and played back as an endless loop.

The pictures usually have to be adapted for export : As standard, the size is set to 800 x 600, an aspect ratio of 4:3 is set. You can customize the sizes if you like. By clicking on "OK" the export process will start.

After setting up the desktop background it will be installed on the system when you place a tick beside the "Install on this computer" option in the dialog that appears.

Under "Effects" you can set which effects should be used and if the change should always occur as a transition or with a random effect.

Create calendar-based desktop background

This option exports the images as a desktop background. Helpful, if you just can't decide on a favorite picture.

Audio material from the slideshow that may be available will not be considered. The desktop background is then installed in the system and played back as an endless loop.

The pictures usually have to be adapted for export : As standard, the size is set to 800 x 600, an aspect ratio of 4:3 is set. You can customize the sizes if you like. By clicking on "OK" the export process will start.

After setting up the desktop background it will be installed on the system when you place a tick beside the "Install on this computer" option in the dialog that appears.

How to adjust the desktop background:

Windows XP: Control Panel > Display > Desktop. Choose a new desktop background under "Background".

Windows Vista: Right click on the Desktop then select "Adjust" > "Desktop Background".

Create a self-executing slideshow

This option exports the photo album as an *.exe file, which can be automatically played back on any PC by double clicking it.

This way, you can be sure that the file can be started and played, regardless of video format or any codec that may be required.

Forwarding**Export to mobile device...**

The selected photos or content of the selected photo album can be exported to your mobile device with this option.

This option opens the dialog for exporting files to a mobile device. Here you can select your camera, removable device or infrared/Bluetooth-enabled device. If supported by the respective device, you can enter a direct path to the target device.

Sending photos via email

This option exports the slideshow or individual pictures and then attaches them to an opened email.

All you have to do is enter the address and the subject matter, and click on "Send".



Photos as ZIP

Photos at high resolutions are correspondingly large. To save on memory space or to reduce the size of larger photo files, it's recommended that you zip photos: If you create a zip file from one or more photos, corresponding zip file will be smaller than the original.

Once the zip file is unzipped, the photos will appear in their original sizes again.

Send photos via e-mail as a ZIP

To save on memory space or to reduce the size of larger photo files, it's recommended that you zip photos: If you create a zip file from one or more photos, the corresponding zip file will be smaller than the original. Once the zip file is unzipped, the photos will appear in their original sizes again.

Use this function, if you would like to continue and send the ZIP via e-mail. You can make the necessary steps one at a time in MAGIX Photo Manager MX Deluxe.

Additional export functions

Advanced settings

Adjust size: This option converts the photos into the selected target format defined in "Export options".

Shrink/stretch all photos to target size: This option converts all photos to the defined "target size".

Only shrink large images to the target size: This option reduces larger images as set in "target format"; smaller images remain small. This way no artifacts are created by enlarging smaller images.

Target format

This lets you choose a format for conversion. "More options" opens the quality settings of the respective format.

More options – Quality: This defines the size of the exported photos.

Effects

No picture effects: This option deactivates the optimize view settings.

Copy effect description file: All effect settings are saved from the optimize view as separate files with the extension *.jpx. When using this option, the file will also be copied to the target folder.

Render effects into pictures: If this setting is activated, the effects from the optimize view are included in the files. "Master Gamma" also includes the global brightness setting; "Write comment into image" includes the subtitles.

Secure data: Burn



CD/DVD: Click here if you wish to create backups of your photos. You can specify whether you wish to create a CD or DVD in the "MAGIX Goya burnR" burn program.

Slideshow: Select this burning process if you wish to burn copies of individual photos which will then shown automatically when you insert the CD/DVD into the drive. An autostart-enabled CD/DVD drive is required for this to work.

WMV HD: To play your movies at optimum quality on your PC, select WMV HD. Microsoft MediaPlayer 9 or higher must be installed for this to work.

JPEG disc: This burning method creates an autostart-enabled JPEG disc, which can be played at very high quality via your DVD player on your TV. Your DVD player must have JPEG disc compatibility for this to work.

Hint: For a detailed explanation of the burning process, please use the program Help from MAGIX Goya burnR (mxcdr\Goya.hlp): pressing F1 opens the Help section.



1. Once you've compiled a playlist that you would like to burn as a data CD/DVD, simply click "Burn". The burning dialog will open.



2. Select either CD or DVD in the burning dialog.

Note: The burning process for simple data CDs or DVDs opens the MAGIX MAGIX Speed burnR burning dialog. For detailed information about the burning program, please refer to the program's help file by pressing "F1".

A short overview:

The first step always opens the MAGIX MAGIX Speed burnR burning program. On the left side of the burn dialog, you can navigate through your computer's folders, while on the right side of the dialog, you can view the current burn configuration.

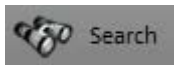
- If you have changed your mind about burning the files, select the ones you want to remove and press "Del".
- You can also add additional files by selecting the corresponding files in the left window and adding them to the burn list via drag & drop.

When you have compiled the contents of your future disc, click "Next".

This dialog specifies the burn speed and sets burn options to be included in the process. When selecting the burn speed, please remember that older burners can sometimes cause problems if a faster burning speed is selected; media burned at a higher speed can fail to be read properly on drives that do not support higher speeds.

Begin the burn process here by clicking "Start burning".

Find pictures and make a selection



Click on this button to open the search dialog for files and folders. The following options are available: "Find similar pictures", "Search the database", "Search the hard drive", "Search according to EXIF content".



You can also click "Selection" in the toolbar to choose between "Create representative selection", "Recognize faces on pictures", and "Find similar pictures".

Search for similar photos

Before opening the search dialog for similar photos, you must select a photo as a source for your search. The easiest way to do so is to right-click on the desired photo. Select "**SEARCH FOR SIMILAR PHOTO**" in the context menu.

SEARCH FOR

DUPLICATE SEARCH: Have you added a copy of a photo and don't know where you have stored it? Use this function to locate it.

SIMILARITY SEARCH: If you would like to find similar subjects, then use this function.

SEARCH THE DATABASE

Specify where MAGIX Photo Manager MX Deluxe should search for photos that were taken during specified dates. This lets you fine-tune the search, saving you a lot of time.

Results

Max. results: Specify how many results appear on a page.

List results: Found photos are listed in the photo overview.

Insert results into the photo album: Found photos are added to the end of the current photo album.

SEARCH FOR THE FIRST RESULTS IN THE PHOTO OVERVIEW (F3 KEY FOR THE NEXT ONES):
You can flip through the results in Explorer by pressing the F3 key.

Search the database

Instead of clicking through individual folders in the library views, you can also search through the whole library according to specific criteria.

Quick search: Enter your keywords for a quick search (e.g. artist's last name, etc.). Remove the checks next to audio files, photos, or videos if these types of files shouldn't be included in the search.

'Clicking "Start search" at the bottom of the dialog will begin searching the Database using your search criteria; relevant files will be listed.

Expert search

Limits search parameters. The characteristics that are to be searched for (album, year of release, genre, artist, etc.) are listed in the column to the left. You can also specify the conditions of the search as well.

Up to three details can be searched for at the same time by using the "AND" or "OR" logical operators.

- "AND" means that only those files that match all criteria will be listed,
- "OR" means that only those files that match at least one of the criteria will be listed.

Results

Max. results: Specify how many results appear on a page.

List results: Found photos are listed in the photo overview.

Insert results into the photo album: Found photos are added to the end of the current photo album.

Search for the first results in the photo overview (F3 key for the next ones):

You can flip through the results in Explorer by pressing the F3 key.

Hint: The current photo album may also be empty!

Search on hard disk

If a media file should disappear from your Database, you can use the search dialog on the second tab to search your hard disk for the file. You can use the file date or size as the criteria for the search.

Search for: Enter the search term or file extension (For example, *.jpg) for which you are looking.

Search in: Set the range for the search: if a specific folder on the hard drive should be searched, click on the small folder symbol and click to the target folder. If a folder, where the search should be conducted, contains other folders that should also be searched, then activate the "Include folders" function.

Date: You can also search according to date, like "during the last few days/weeks", or within a certain time period. In addition you can add the kind of changes the file has gone through: was the file "created", "changed" or simply "accessed"?

File size – "bigger than", "smaller than": Using these two search limiting functions, you can enter minimum/maximum size.

Results

Max. results: Specify how many results appear on a page.

List results: Found photos are listed in the photo overview.

Insert results into the photo album: Found photos are added to the end of the current photo album.

Search for EXIF content

Alongside the base picture information the EXIF format also contains additional information on special camera data, for example, date or time of recording, focal width, etc. This information is saved in the form of tags or so-called "fields".

Search for

Enter the search term here and specify which fields should be searched - either in all or only in specific fields that are determined via **"Search in the following fields:"**.

Search in

Limit the folders which should be searched - either all or only specific folders that are determined under **"Folders:"**.

Results

Max. results: Specify how many results appear on a page.

List results: Found photos are listed in the photo overview.

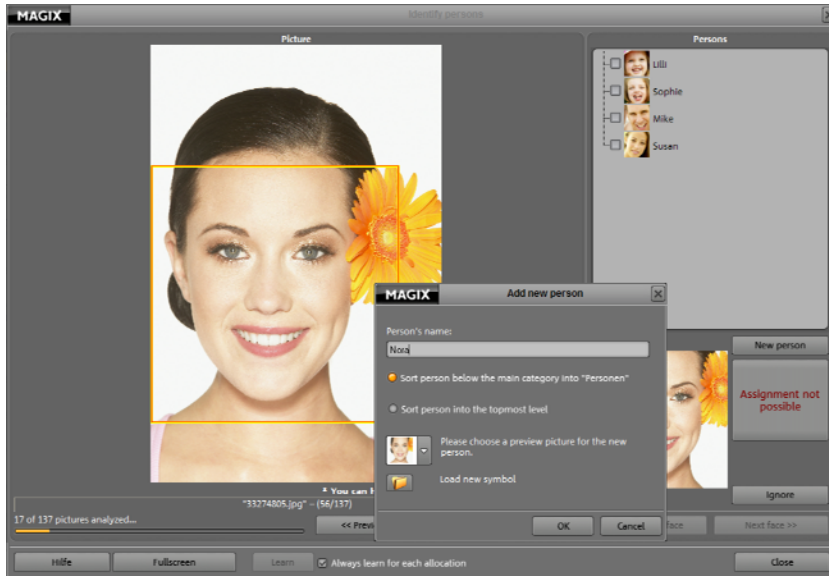
Insert results into the photo album: Found photos are added to the end of the current photo album.

Search for the first results in the photo overview (F3 key for the next ones):
You can go through the results in Explorer by pressing the F3 key.

Recognize faces on pictures (FaceID™)

A different way to catalogue pictures is by using FaceID, a development of the Fraunhofer Institute. FaceID recognizes faces on photos and gradually learns recurring faces using typical features, and these are then assigned to specific people. At the start, you can help FaceID with the recognition process, but later on, you'll be surprised at just how well FaceID can recognize faces again.

Step 1: Open a photo folder in MAGIX Photo Manager MX Deluxe and select "Edit > Find similar photos > Identify faces on photos".



Proceed as follows to create a list of people:

Step 2: FacelD circles sections on your photos that have been recognized as faces. If a face that you find relevant is displayed, then you can give this face a name. All people will be shown to the right within the window.

- **Set a new person:** Click the "New person" button. A dialog appears (see figure) for you to specify a name and an icon for the new person that should appear in the list. Clicking "OK" finally adds this person to the list.
- **Remove wrongly recognized sections:** If FacelD incorrectly identifies a section of the picture as a face, select "Ignore".

Use "Previous picture" and "Next picture" to move forwards and back through the pictures.

- **Find faces manually:** If FacelD doesn't supply a frame even if there is a face on the photo, you will have to select the face yourself. To do so, simply drag out a rough frame over the face with your mouse and give the face a name.

Step 2: If you have already added a few people, FacelD will suggest one of these faces for every other face which can be assigned to this face via "Assign name". Don't worry if FacelD gets it wrong a few times at the start; it's a difficult learning curve for such a young piece of software. That's why you will often have to make corrections and add the appropriate name by clicking on the proper person in the list on the right side.

Step 3: After systematically searching through a folder for faces and identifying everyone, close the identification dialog.

- **Finding the assigned pictures again:** Your collection of people will continue to grow and grow in the "Categories" area as you add more names. Clicking on one of these names will open all pictures that show this person or have been assigned to this person.

Automatic photo selection

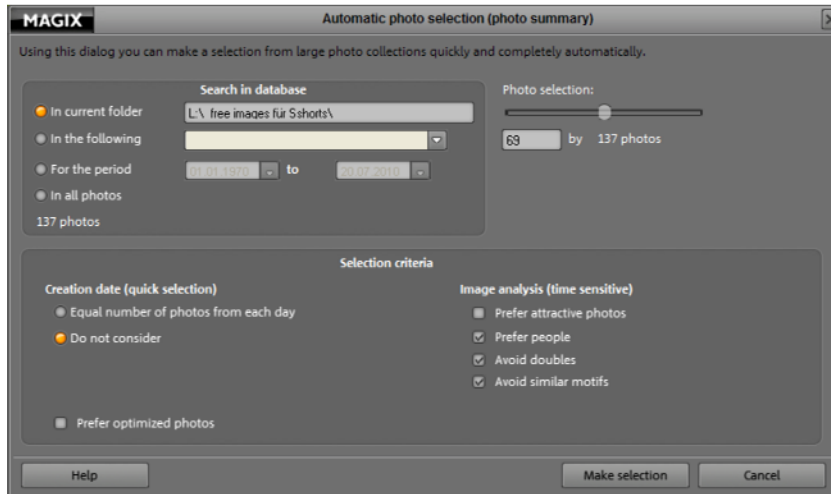


Photo selection: Depending on the condition of the picture, MAGIX Photo Manager MX Deluxe should be able to create a representative selection according to your specifications in "Search in", and you will see the number of pictures that are available. The slider allows you to determine how many images should be included in the selection.

Search in: Specify which photos should be searched for the selection. The creation of a selection doesn't take much time if the pictures are already in the database.

- **In all photos:** All photos that are contained in the database will be included in the selection.
- **In current folder:** This displays and searches the folder that you have selected in MAGIX Photo Manager MX Deluxe's folder view.
- **In the following folder:** Enter a folder on the hard drive that has already been recorded and listed in the database.
- **During period:** Limit the amount of pictures for the selection by specifying the date they were taken. In this case, only pictures will be considered that are already recorded in the database.

Selection criteria: Specify the criteria used to create a selection. The more criteria are activated, the better the selection results will be.

Image analysis: Activated image analysis functions cause selection to take a little longer, but the results are more representative.

Click the "Create selection" button once you have specified all the criteria. MAGIX Photo Manager MX Deluxe will then create your selection as a new album for you to adjust and then save.

Print and order pictures

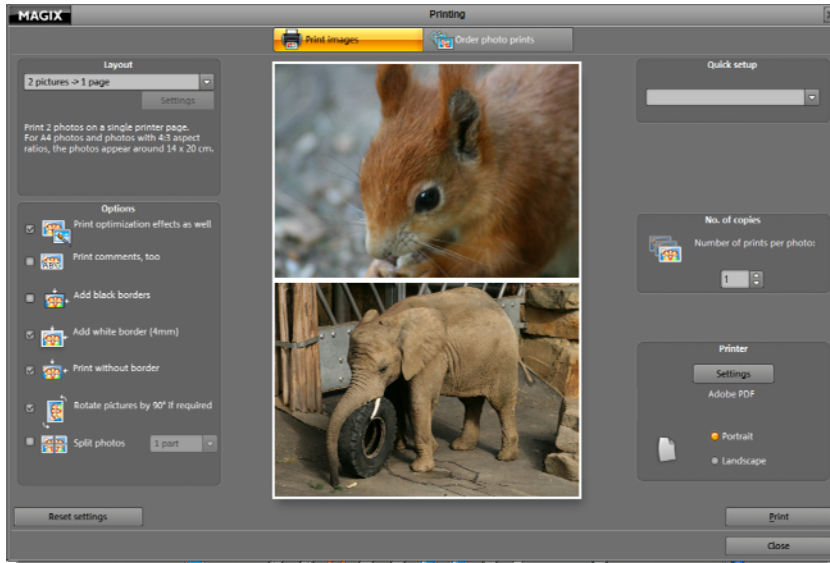
If you want to print your images at home or order prints online from our Online Service, then there are many options available to you to place your images accordingly in different scenes.

Print photos

Tip: Use "Optimize" on MAGIX Photo Manager MX Deluxe's main screen to adjust images with redeye or color problems in order to get the best possible results.

1. Select all images which you would like to print.
2. To open the dialog, click the **"Print"** button.





Layout: You can set how many pictures should be printed per page. You can choose from between 1 and 8 pictures per page. The more pictures found on any page, the smaller they will appear. With "Contact sheet" you can have a type of index for all pictures printed. All pictures are ordered in mini format on one page. Of course, you can also print your pictures in standard formats (9x13 and 10x15).

Options: Activate options by checking them off (and leave those unchecked which you don't want to activate). For example, if you've saved comments on an image and want them to be visible on the printed page, then activate "Print comments". If you've optimized several images or added effects, place a check next to "Print optimization effects" so that the adjusted photos appear as you want them to. Click on "Default settings" to reset things to their standard values.

Quick settings: This displays several typical settings for print jobs like posters and postcard puzzles, etc. Use one of these settings and you will have to make sure that there are no adjustments to the settings under "Options".

Copies: Set how many copies are to be created for the current print job.

Landscape format: Activate this button to print the image in a landscape (horizontal) format.

Setting: Open your printer's settings and customize them to meet your requirements.

A rectangular button with a light blue gradient and a thin border. The word "Print" is centered in a dark blue, sans-serif font.

Click "Print" to start the print process.

Order photo prints

Would you like to order prints of your pictures? It's easy! We'll show you how it works and in a few days, you'll be holding your prints in your hands.

Tip: Via "Optimize" on MAGIX Photo Manager MX Deluxe's main screen, you can adjust images with redeye or color problems in order to get the best possible results.

1. Select all images which you would like to order.

Note: In MAGIX Online Print Service you can add additional images from your hard disk.



2. Click the "**Photo prints**" button. The print dialog in the "**Order prints**" area will open.

Tip: Inform yourself about the current prices and offers and stay up to date!

3. Click **Send selected photos** to open MAGIX Online Print Service and upload photos.

MAGIX Photo Viewer

This small MAGIX program is also automatically installed when MAGIX Photo Manager MX Deluxe is installed to provide more options for viewing your photos and videos.

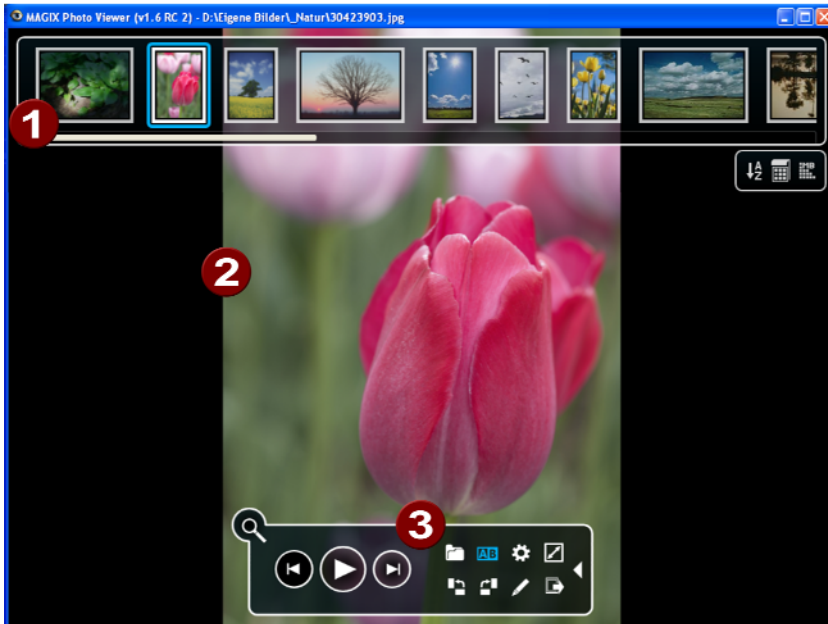
- The MAGIX Photo Viewer may be started quickly by pressing the "Slideshow" button.
- The menu item "Edit -> Slideshow -> MAGIX Photo Viewer" may also be used to open the program, and the slideshow will start automatically.
- It's also available via "Start -> Programs -> MAGIX -> MAGIX Photo Manager MX Deluxe -> Other programs -> MAGIX Photo Viewer".

Burn slideshow and use MAGIX Photo Viewer for playback:

Burn a slideshow CD/DVD and the MAGIX Photo Viewer will also be added as a the player. Insert the medium into the drive and the slideshow will start

automatically; photos/videos will be played back automatically with the MAGIX Media Viewer.

Note: Detailed help regarding this is available directly via this small program. Once it is opened, press F1 on the keyboard to open help.



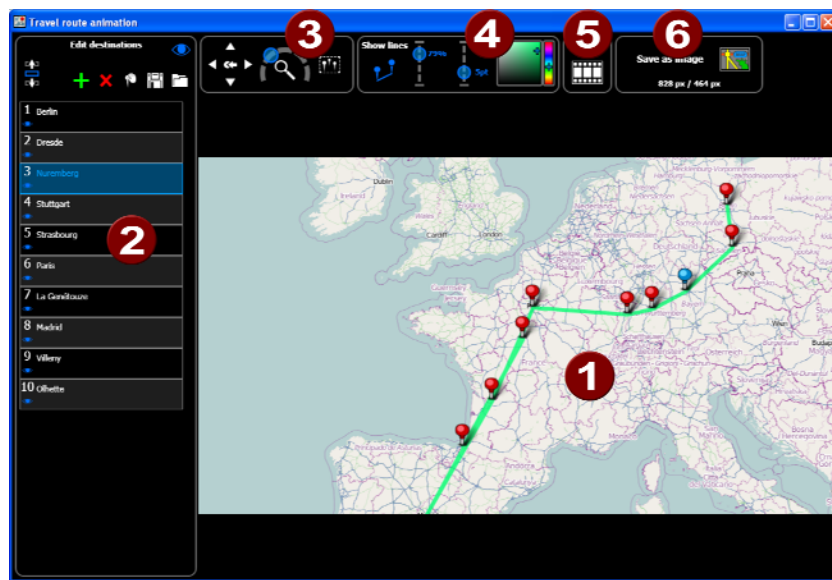
- 1 **Gallery:** Contains all media files that are dragged and dropped into MAGIX Photo Manager MX Deluxe.
- 2 **Display screen:** Displays the current media. If this is an audio or a video file it will play.
- 3 **Transport control:** The program or media settings can be changed here.

Create map

Use this function to document travel routes or directions, to mark your favorite cities, and so on.

For example, add all of the locations from your trip and these will be displayed on the map. Connect the locations with lines by pressing "Display lines", then save the map to integrate it into your vacation slideshow.

Note: Detailed help regarding this is available directly via this small program. Once it is opened, press F1 on the keyboard to open help.



- 1 Map:** Displays map material from openstreetmap.com.
- 2 Selected locations:** If you look for a new location, then this will be provided via geonames.org and entered on the map. All of the locations that you have selected on the map will be displayed in the list, and corresponding markers appear on the map.
- 3 Map section + zoom:** The map may be moved by pressing the arrows. "Zoom" enables you to zoom into the current section (+) to view more details or to zoom out (-) for a better overview.
- 4 Show lines:** If at least 2 locations are marked on the map, then this function will be available for linking the locations. The line color and thickness may be changed.

- 5 **Format:** Set the map format to 16:9 or 4:3 as required.
- 6 **Save as image:** The current map section may be saved as an image in the format PNG, BMP, JPG, or TIFF.

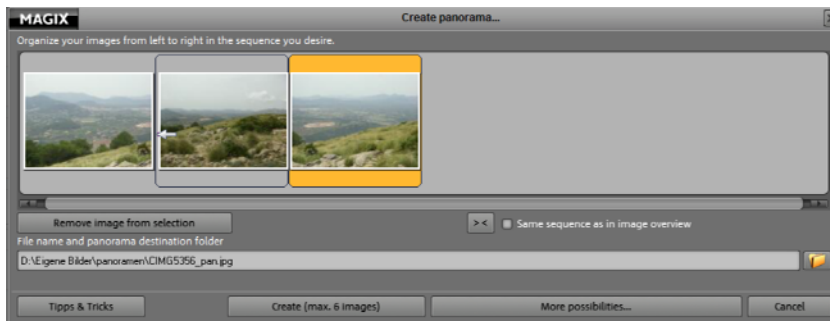
Create panorama image

This function will turn your photos into a sensation. Add new life to your holiday memories and create great panoramas with only a few clicks - including automatic exposure recognition and lens distortion/perspective correction.

You don't need to create "proper" panoramas exclusively; Let your imagination run wild and put together anything you want to. You'll see your photos in a new light and create stunning montages.

You can find this function in the "Edit" menu > "Create panorama image", and also in the context menu of one or multiple selected images.

1. Select all of the photos which you would like to add to the panorama (6 maximum).
2. Open the panorama dialog.
3. Change the sequence of the images as you see fit.
4. Under "Panorama file name and destination folder:" you can change this information as you desire.
5. Click on "Create" to run the automation.



The finished panorama made of 2 images:



Tip: You can also create "portrait panoramas". Just clip the photos you would like to be stacked on their side. Create a panorama and turn the resulting image 90°!

Tips for creating panoramas

In general, you can use any images to create panoramas, however, a couple of things should be considered if they are to look professional (i.e. the edges between the images are not visible).

First, pay attention to the image overlap and the difference in brightness between the images.

The image overlap displays the part of the neighboring image where the pictures should be matched up according to the image and brightness. If this part is too large, then you will have to adjust the settings accordingly. A maximum overlap of 70% can be expected, but up to 90% is allowed. In any case, this will negatively affect calculation time, i.e. it will take longer for the panorama to be created. 50% image overlap is recommended to achieve optimum results.

When creating images which you would definitely like to use for a panorama image, pay attention to the difference in brightness between the images. Also, make sure you have enough details in the image. If the difference in brightness is too extreme, then manual correction may be necessary.

Equalizer

Equalizer

The 10-band equalizer splits the frequency spectrum into 10 areas ("bands") and provides a separate volume slider for each band. Add impressive effects, from simple bass boosts to complete sound distortion. If the frequencies are raised too much, particularly low frequencies, the total frequency is increase high enough for distortions to develop. In such a case you should use the volume controller at the center to reduce the total volume.

Slider: Each of the 10 frequency bands can be adjusted using the 10 volume faders.

Presets: The EQ has a selection of defaulted presets which can be chosen from a flip menu.

Click "Reset" to remove the applied preset.

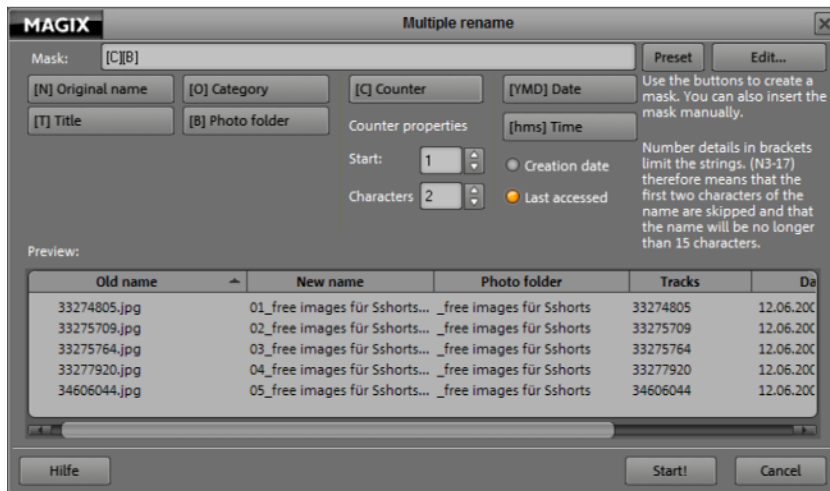
Functions in detail

For advanced functions, you will find detailed explanations and instructions for correct operation in this chapter.

Multiple rename

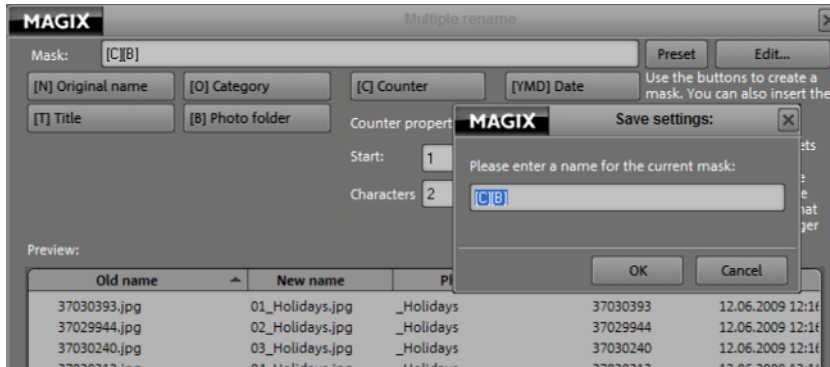
The **Multiple rename** function provides a great opportunity to title (if desired) your files. This way you can save multiple files or folders all at once.

Note: To select multiple files/folders, hold down "Shift" and click on the first and last files that you wish to rename. They now appear dark gray (selected). Multiple individual files can be selected by clicking on them while holding down the "Ctrl" key.



Presets

Click on the preset button to load various preset masks for summarizing the new file names. You can also save masks for later renaming by selecting **Save mask in the preset list**. Please don't forget to name your new mask logically. These personal masks then appear in the lower half of the preset list.



Create new folder

If you insert a backslash into the mask (\, or **Alt Gr + ?**), the corresponding subfolders that you entered as variables are created. For example, the mask "[A]\[B]\[C]-[T]" creates the corresponding folders for "Artists" and then the additional folder for "Albums", into which all correspondingly renamed files are moved.

Additional variable editing options

Enter only certain aspects of a variable: You can tell variable B (Album) to use only the first 3 letters of the album name. To do this, you have to write the number 3 in along with variable B, i.e. [B3]

Variable content upper/lower case: To have variables written either only in upper or lower case, add the corresponding variable at the end written in either upper or lower case. For example, use [TT] to have the complete title written in uppercase.

Variable separators hms and YMD: A hyphen behind the hms or YMD variable will result in time entry being written separated by a dash. You can also enter other characters instead of the hyphen (space, underscore, etc.). The order of either variable can also be adjusted to change the time measurement.

Use abbreviations with [K]: If you would like to shorten an artist name or the name of an album, etc. you can use [K] to do this automatically. Insert [K] at a random position of the template. A dialog will open where you can enter the desired abbreviation and enter the full name or title for the text "to be replaced" so it can be found and replaced correctly. Please choose the desired abbreviation and click on "Select". The long version now will be replaced with the abbreviation in the main dialog.

Inserting and editing images from the clipboard

Make a screenshot by pressing "Print screen" on the keyboard. Next, select MAGIX Photo Manager MX Deluxe's "Edit" menu, and then "Insert". The "Save as..." dialog appears.

Enter a logical name in the "File name" text field. You can also select a folder where the screenshot should be saved (so that you can locate it later). Click "Save" to confirm the action and the screenshot will be added.

Navigate in MAGIX Photo Manager MX Deluxe to the image you just created to edit it and use it as you wish.

Work in networks

In MAGIX Photo Manager MX Deluxe, you can also work in networks as if they were the normal folders on your computer, but of course only if you are authorized to access all of the folders of the individual network users.

Would you like to manage the music of a network user in your folder? No problem for MAGIX Photo Manager MX Deluxe. Click in the network on this folder and confirm that you would like to manage this media in your folder by clicking "Yes".

In order to avoid having to click through the whole network to a specific network user, you can also **save the network path**. In this way, you can click on the network path in My Computer to access the user's folder. If the network path changes, then this can always be changed or completely deleted. Open the network path's context menu to do this.

Here's how you add a network path:

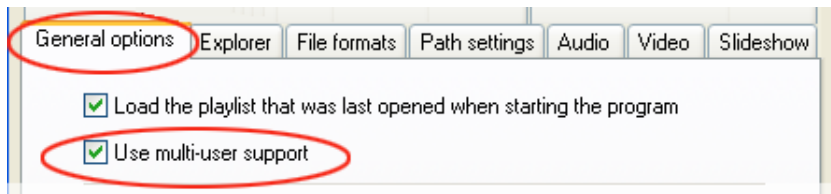
1. Open up **My Computer** -> **Network paths** and then open the respective network group and then select the desired network users.
2. Open the context menu and then **Add network paths**.
3. Enter the network path to the computer and the authorized folder. For example, \\Matthew\\files -> the computer is named "Matthew" and the authorized folder "files".
4. If a name and password have been entered to use the network, then this will have to be given under **Log in to the network with the following data**.
5. Confirm your entries with **OK**.

Multi-user support

Multi-user support makes it possible to save program settings for each Windows user separately. Files and folders in the database may also be locked for other users. These will then no longer be visible to other users. This lock applies to all database views in all MAGIX programs, i.e. multiple settings do not need to be made.

Note! This is not a security function! These files will not be protected against external access in this manner! They will still be able to be located by other users in the file system and used as long as Windows file permissions allow this.

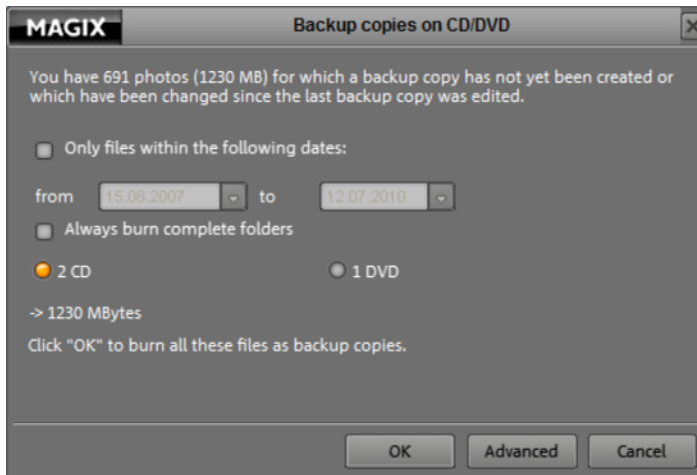
Activate the multi-user support via the options (shortcut: "Ctrl + '") or via "File > Options > General".



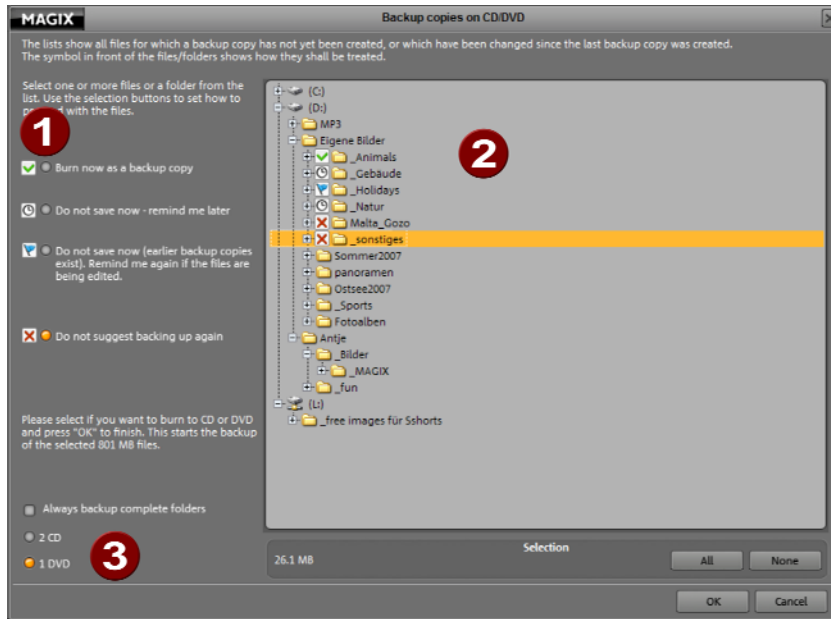
Create backup copy on CD/DVD

In order to ensure that your valuable material is not accidentally changed or even deleted, we recommend burning backup copies to CD or DVD after importing. Creating regular disc backups of your images will ensure that your important memories are protected.

MAGIX Photo Manager MX Deluxe features an automation for your backups which you can find in the "Security" menu, "Create backup copy -> Create backup copy on CD/DVD".



Advanced settings

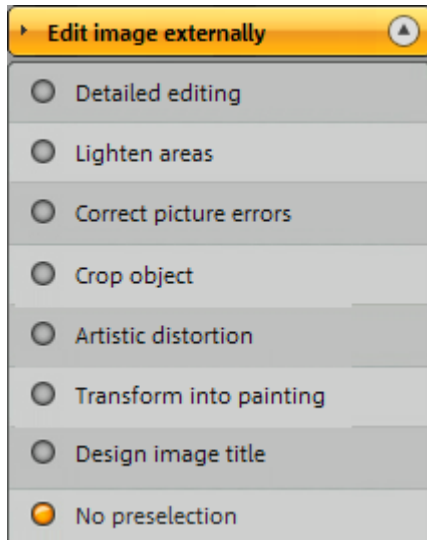


Under "Advanced" you can access a list with all files in the Database (2) that have not yet been backed up or that have been changed since the last backup. You can activate or deactivate all folders or files for the backup (1). Specify whether you would like to burn a DVD or a CD (3).

Clicking on "OK" opens the burning window.

MAGIX Foto Designer 7

In the MAGIX Foto Designer 7 section you can choose from a number of different tasks. MAGIX Foto Designer 7 loads the current image into a separate image processing program, which then performs the selected tasks.



The comprehensive image processing software from MAGIX possesses an extremely extensive effect browser and a large set of filters. You can use them to distort your pictures' motifs or change the style of the photo into a painting or screen print.

In MAGIX Foto Designer 7 you can also quickly optimize your photos. For this you will find "Red eye correction" and other tools to correct mistakes and unfocused pictures. The best example for this type of application are old photos that you might want to scan in and digitally restore. The functions for cutting out objects with the lasso tool or the cloning function for retouching distorted picture details are also quite helpful.

Working with MAGIX Online Album

Managing and caring for your MAGIX Online Album is easy with MAGIX Photo Manager MX Deluxe. In just a few steps, your media will appear on the Internet.

Learn about how to load media from MAGIX Online Album to your computer again in the chapter Importing from your MAGIX Online Album (view page 63).

Registration

Before you receive access to your Online Album, you will have to register with MAGIX. Then you will not only have access to all of MAGIX Online World, but you will also be able to download patches (program improvements) for your MAGIX program.

A) If you are already a registered MAGIX customer, then just enter your email address (login name) and password that you used to register with MAGIX. Next, click "OK".

B) If you are not registered with MAGIX yet, then select "Info & Registration". This will direct you to the registration page.

- Decide whether you want a free, classic, or premium album. Click accordingly below the album on "Register now". You can always upgrade your album to another format.
- On the next page, select "I'm not registered yet", and then click on "Next". Fill out the short form for general registration with MAGIX and then send it to MAGIX by clicking "Finished".
- You will receive a confirmation email from MAGIX, and then you will immediately be able to log in to any MAGIX service with your email address and password.

Send media to Online Album

- In <fotomaneger>, select all files which you would like to add to the album.

Note: Only MP3 files can be uploaded as audio.



- Click on the **ONLINE ALBUM** button.

The Online Album dialog will appear:

- Click the **"SEND SELECTED FILES"** button to start the send process to your Online Album. The login dialog appears.
- Enter your Login name and the Password for your Online Album, and then confirm with **OK**.

Note: If you don't have an Online Album yet, then click **INFO & REGISTRATION**. Here you can register for your free MAGIX Album.

- Once the upload dialog for the Online Album has opened, follow the instructions: Select image quality and enter a folder where you would like to load your files.

Next, the files will be uploaded and you can look at your images online.

Import from your MAGIX Online Album

If you would like to load media from your MAGIX Online Album to your computer, then proceed as follows:



Step 1: Click the "Online Album" button.

Step 2: Switch to the "Manage" screen and log in.
The dialog for managing your MAGIX Online Album will open.

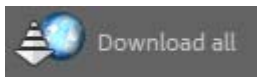
Step 3: Go the album/folder which contains the media that you want to copy to your hard disk.

All media in the album will be displayed.

Step 4: Under "Save downloaded media in", enter the folder on your hard drive where the media should be copied.



If you only want to copy a few files from the Online Album, then select these and click "Download selected".



If you want to copy all of the media, then select "Download all".

Managing your Online Album



- Click on the **ONLINE ALBUM** button.

- Switch to the **MANAGE** area and log yourself in.

The dialog for managing your MAGIX Online Album will open.



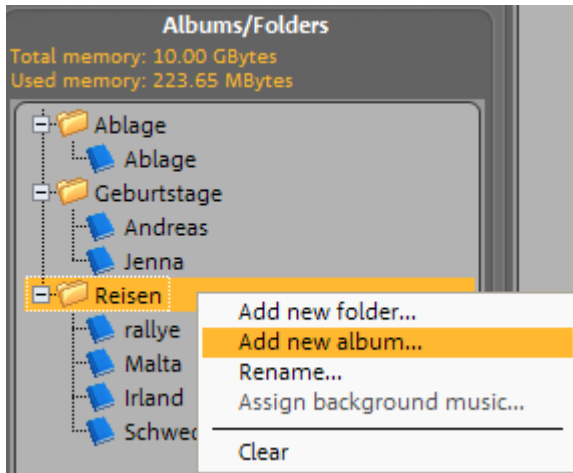
- 1 If you manage multiple Online Albums, then you can choose which one you want to work on here.
- 2 Preview the album in the Internet browser.
- 3 The list with the albums of your Online Album. Click on an album and the media contained within it will be displayed in the view (5).
- 4 Select specific media in your Online Album and choose **MOVE MEDIA** to move items to different folders, or select **DELETE MEDIA** to delete items from your Online Album completely. Select an album and click on "**Add media**" to copy music, images, and video files to your online album.
- 5 All media in the album will be displayed.

- 6 If you would like to download media from your album, enter the folder where the media should be copied.
- 7 Select either **"DOWNLOAD SELECTED"** to download only that which you have selected, and **"DOWNLOAD ALL"** to copy all media (selected or not).

Create new album

Don't just load media into existing albums, but create new ones too (it's easy):

1. Right click on a folder or an album to open a submenu where you can "Add a new album...".



A dialog opens to "Create a new album".

2. Select the type of album. For a purely photographic album, choose "Photo"; for all audio, select "Audio", etc. If you would like to feature multiple types of media in a single album, then select "Mix".
3. Enter a clear name for your album under "Album name". This name will also appear on your Online Album website.
4. If you want to, you can also give the album a text description (under "Album description"), and your visitors will see this description as they roll over the album with the mouse. That way they can get an idea of the contents without opening the album.

Digital picture frames

Digital picture frames are becoming more and more dynamic; even the options for transferring to them are becoming more advanced. From a simple USB connection to transfer via Bluetooth or infrared, take this opportunity learn a little more about digital picture frames.

The following items should be noted when purchasing a digital picture frame:

- It doesn't matter whether 7 or 8" display, avoid frames which only work with 480 x 234 pixels. To display pictures sharply, you will require at least 720 x 480 pixels. 800 x 600 pixels would be optimum according to the current level of technology. 4 inch displays with 480 x 234 pixels are adequate (ratio of pixels to display is sufficient).
- Please bear in mind that many digital frames can be acquired with 16:9 format, but digital cameras produce images in 4:3 or 3:2 format, which means your photos will be cut off in the frames to avoid black bands on the edges.

Connecting digital picture frames

Connect via the USB port

Several picture frames contain proprietary drivers so that they are recognized immediately when they are connected and displayed with the correct name in Explorer.

Some, however, are missing these drivers. These frames will be named "Removable storage device" by Windows. In this case, the location of the frame may be referred to by the name of the storage card inside it (provided one is integrated).

Image selection

The following things should be considered when selecting pictures:

- Photo selection should be considered in terms of their format - i.e. portrait. Most frames at the moment cannot automatically turn images so that individual pictures are displayed correctly. If this function should be integrated, then black bars will be displayed because the format changes. If you want to avoid this, then just select images of a single format (landscape or portrait).

Tip: Create a new album with all of the images that you want to transfer to your digital picture frame. This will make it easy to have a clear overview.

- To fully utilize your picture frame's memory, you should first convert the images to the optimum dimensions on your PC. The larger the image, the larger the file and the fewer images will be able to fit on the frame. Under Export images (view page 104) you can learn about the process.

Crop image

It's not always the case that every detail of an image needs to be saved forever. Sometimes even the arrangement of objects in an image can be adjusted. For this purpose, cropping certain areas as a separate image or the removal of unwanted details at the edges can be helpful.

To do this, proceed as follows:

1. Activate MAGIX Photo Manager MX Deluxe's "**Optimize**" mode. To the left in the program, tabs appear with the editing functions for your images.
2. Below the **basic functions**, you can see the "**Cut image**" button. Clicking on this button activates this function.
3. Hold down the left mouse button while you draw out the cut over the image.
4. The orange-colored handles around the cut window can be manipulated to adjust the size.
5. Once you've entered the correct size for your cut, click on "**Accept**" and the image will be reduced to your specifications.

"**Reset all**" returns the image to its original form. Click on **Fix effects**, and the effects will be written to the original image.

Permitted formats

Export formats for single images for display on digital picture frames:

- JPEG (*.jpg/*.jpeg) or
- BMP (*.bmp),
- PSD (*.psd),
- TIFF (*.tif)

etc.

Note: Pay attention to the formats which are supported by the picture frame!

Or, create slideshows and videos in the following formats, and then transfer these to your frames:

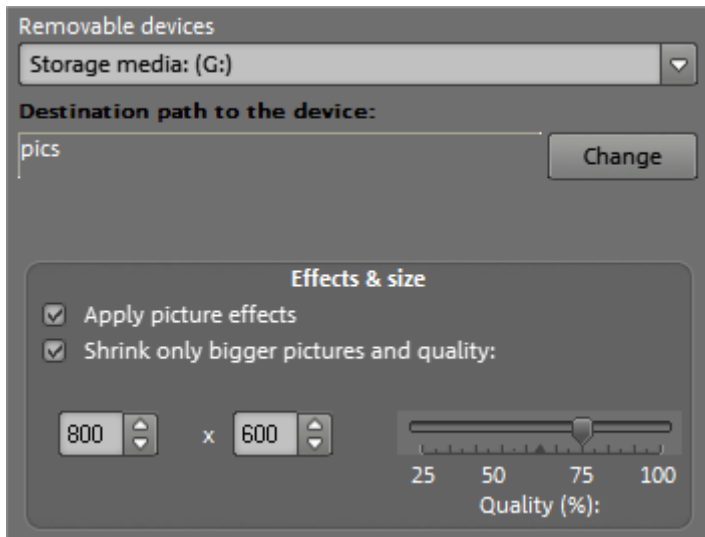
- AVI (*.avi) or

- WMV (*.wmv),
- MOV (*.mov) (with installed codec),
- RealVideo (*.rv) and
- MAGIX Video (*.mxv).

Note: Pay attention to the formats which are supported by the picture frame! The most conventional image formats are AVI, MOV, and WMV.

Export pictures

1. Select all of the images that you would like to transfer to your picture frame.
2. Click on **"Export"** on the toolbar. The corresponding dialog opens.
3. Select the "Transfer" category and then **"Transfer to mobile device"**.
4. Click on **"OK"** to confirm. Another dialog will open.
5. Select **"Mobile devices"** and then your digital frame. Adjust the target path as needed via "Change".
6. **"Effects & size"** enables you to enter the respective values for the frame.
7. Confirm your entries by clicking **"Execute"**. The transfer process will start



Keyboard shortcuts

File menu

Open photo album	Ctrl (right) + O
Save photo album	Ctrl+S
New folder	F7
Options	Y
Quit	Alt+F4

Edit menu / Context menu

Select all	Ctrl+A
Cut	Ctrl+X
Copy	Ctrl+C
Insert	Ctrl+V
Move to Recycle Bin	Del
Delete permanently	Shift + Del
Rename	N
Copy into folder	Ctrl+M
Optimize Photo	Shift + V
Hide	Alt+Delete
Clear	Shift + Del / Del
Start slideshow	B

Windows menu

Slideshow monitor	V
-------------------	---

Help menu

Help	F1
------	----

Menu

In this chapter you'll find the full menu list of your copy of MAGIX Photo Manager MX Deluxe and the corresponding functions.

File menu

New photo album

This option creates a new photo album. Hold down the left mouse button and drag the files from the overview on the right to the photo album on the left!

Shortcut key: Shift + N

Open photo album

This option lets you load a previously created and saved photo album.

Shortcut key: Shift + O

Save photo album

Use this option to save a photo album.

Shortcut key: Shift + S

Save photo album as...

This option lets you save an existing photo album with a new name and in a new folder.

New directory

Creates a new folder inside the currently open folder and opens an editor in which you can name the new folder.

Create map...

Select locations on the map to save them as an image for a description of a trip route.

Note: Detailed help regarding this is available directly via this small program. Once it is opened, press F1 on the keyboard to open help.

Scan

Scan with

The scan window of your scan software will appear. Specify the resolution and color depth in this window.

When the scan is complete, the TWAIN software should close automatically and MAGIX Photo Manager MX Deluxe should now contain the newly created image file. It's possible that the TWAIN window remains open. You can then scan multiple pictures one after the other.

Select source

The TWAIN interface connects MAGIX Photo Manager MX Deluxe with nearly all modern scanners or digital cameras. To scan, please proceed as follows:

1. Install the TWAIN software for your device.
2. Restart you PC.
3. Start MAGIX Photo Manager MX Deluxe.
4. Click on "File > Twain Scanner/Camera > Select source" if the scanner works with 32 bit software.
5. Select your device from the dialog. This step is only required once and only has to be repeated if you want to change the device.

Exporting the photo album

This menu point opens the standard export dialog (view page 69, view page 28) wherein you can prepare your photo album for different export variations according to your wishes and then export it.

CD/DVD burner

Burner information

Choose this option to display information about your CD-R drive. A blank CD must be in the drive for this option to work. Among the information displayed is the manufacturer, drive name, hardware version, cache size, and the features supported by the drive mechanism.

Disc info

Information about the inserted blank CD-R will be displayed. For example what the maximum possible file length is, this is displayed because if the amount of data does exceed the available space then the disc cannot be burnt.

MAGIX Xtreme Print Center

This menu entry starts the independent "MAGIX Print Center" program. The print studio is a printing suite for cover and label printing for CDs, DVDs, and VHS tapes. You can easily print perfect stickers, covers, inlays, and booklets.

Note: Use the included program help (via "F1").

Options

Note: The functions in the options dialog will only take effect after you click "Apply" and "OK"

Options > General options

Load recent photo album on program start: This option always opens the last program according to the settings entered during the last session.

Use multi-user support: If there are multiple users (view page 94) entered on the same system, then you can save different settings for each one of them. Additionally, certain folders can be hidden from other users.

Show tooltips via function keys: Tooltips are small windows with info texts. They appear when the mouse pointer is positioned over a function key.

Allow dialog animations: The animation in the program can be switched off/on for weaker systems.

Open encoder settings dialog before converting: If this check box is deactivated, the last used settings or default settings for converting the images are used.

Use Windows photo print assistant for printing pictures: The Windows print assistant is used instead of the MAGIX Photo Manager MX Deluxe printing dialog. This setting is recommended only if you experience problems during printing.

Display news center: If you don't want the small button for the "News Center" above and to the right to be displayed, then remove the check mark here.

Tips and information

Reset: Many information windows can be switched off permanently after being displayed. This option reactivates all disabled information and confirmations.

Online Service

Settings: Enter an alternative Online Service.

Options -> Explorer

ID3Tag in Explorer: Displays the ID3Tags contained in MP3 files (information on song, performer, etc.) directly in Explorer.

Thumbnails (preview images)

Show thumbnails: Thumbnails are small icons used to preview images. This option activates the thumbnails.

Generate thumbnails from JPGs without EXIF tag: Some JPG files include thumbnails in an EXIF tag so that large images do not have to be scanned first to be previewed. If this option is activated, a thumbnail is generated for each photo (even those without an EXIF tag).

Cache settings

Use cache: This function is normally active, since it guarantees faster launching of frequently needed files.

Enter if a central cache should be used or a local one. When switching between local and central caches, at first no cache files will be deleted or moved. "Older" cache files will only be deleted when you work on those photos or videos, thereby creating new cache files (in the new folder).

Audio comments

Some digital cameras have an audio recording function and save a WAV file with each photo. The PC identifies these cameras as separate drives; it is automatically loaded when the photo is loaded.

Hide comment files: Audio comments are not displayed as separate files. However, a speaker symbol appears next to the photo to indicate that an audio comment exists.

Automatically apply file operations (copying, moving, deleting) to comment files: Indicates whether file operations are to be applied to the audio comment file of a photo.

Always play when displaying image/only play in photo album/never play audio comments: Specifies when audio comments are to be played back.

Options > File formats

Here you can assign different file formats to MAGIX Photo Manager MX Deluxe.

You can select the media to which you wish to connect file extensions in the flip menu.

Registration: The file extensions selected below will be assigned to MAGIX Photo Manager MX Deluxe, that is, they will be opened with the program as default.

MAGIX Use viewer: The MAGIX Viewer is a component of MAGIX Photo Manager MX Deluxe which opens quickly without consuming too much processor power.

Options > Path settings

Here you can adjust the paths for standard folders. You can normally leave these settings as they are.

Options > Audio

On this page, you can decide which sound driver the program is going to use. Setting this up is only necessary if multiple sound cards are installed on your PC or if you are having problems with the sound output. Apart from the driver, you can adjust the size of the data buffer for RAM and hard disk that is created by MAGIX Photo Manager MX Deluxe.

Audio buffer (ms)/Latency: To enable a smooth workflow, MAGIX Photo Manager MX Deluxe creates a so-called audio buffer into which the current file is saved during playback. You can set the size of the buffer in milliseconds (ms).

Latency: The latency can be seen as the reaction time of MAGIX Photo Manager MX Deluxe. It sets how quickly changes (such as effects, starting and stopping playback) can be heard. It can be adjusted in 5 millisecond increments and can be max. half as long as the audio buffer.

A rule of thumb is: If loading and waiting times are long, the latency should be reduced, but if repeated real-time editing errors are experienced, then it should be lengthened.

Hard disk buffer: The hard disk buffer is a temporary memory buffer on the hard drive used by MAGIX Photo Manager MX Deluxe for data processing. Use this option to specify the size of the hard drive buffer in bytes. Increase the buffer size if playback is choppy or interrupted.

Sound card: This lists all of the DirectSound drivers installed on your system. The primary audio driver is selected by default and is generally what your system uses for audio output.

Change this driver only if you really want to play a playlist using another sound card or another output. If the sound card does not have a true DirectSound driver, then an emulated driver will be listed: "Sound card XYZ (emulated)". In emulation mode MAGIX Photo Manager MX Deluxe uses the sound card, however, optimum performance can not be reached.

Important: The selection of a different sound card is not taken into account until MAGIX Photo Manager MX Deluxe has restarted.

Video

Play video

Automatic video playback optimization: Sound and effects will not be included in order to be able to playback the video.

Balance aspect ratio: Adjusts the aspect ratio of images to the video monitor. If disabled and depending upon the image format, black stripes may appear on the borders.

Complete fields (deinterlace) if possible: This effect is mainly intended for snapshots of video images, since the field technology in TVs often produces an unusable image if the fields differ too much.

Preferred DV video resolution: The resolutions that can be set here only concern the picture display of DV videos. If playback becomes jerky, we recommend entering a lower value. The quality of exported videos is not influenced by this. DV video resolution can be altered during playback either automatically or you can choose between full and 1/8 resolution.

Options > Photo

Slideshow options

Configures the slideshow default settings.

Change image every [...] seconds: Specifies how long the image is displayed.

Image crossfade: Activates/deactivates soft image fading.

Duration: Specifies the duration of the soft fade.

Maintain the proportions of the pictures (add borders): The original length/width ratio is retained when zooming. If necessary, borders are added. If the option is deactivated, image distortion may occur.

When finished, restart from beginning: This option plays the slideshow in loop mode. This lets you create animations for parties as loops.

Photo settings

Here you can choose whether you would like to enlarge smaller photos or save the optimizations you made in the optimization view as a file which can then be applied to other pictures later.

Enlarge small photos: Small photos are increased in size even if they have lower resolution than is possible in the filmstrip view or in the slideshow monitor.

Non-destructive FX: When this option is activated, all adjustments made to images can be undone. If the option is deactivated, then all optimizations made to the images will be applied directly to the image, and the original will not be able to be restored.

Note: It is strongly recommended that this option be left active to ensure that changes remain reversible, or that work is performed on a copy of the image.

Allow pan: If you are viewing panoramas in MAGIX Photo Manager MX Deluxe, then you can watch them using a continuous pan in MAGIX Photo Manager MX Deluxe. Zooming in or out stops the movement. Deactivate this function, if you would like to view the panorama alone like every other image.

Options > Database Behavior for new files

Automatically update MAGIX Media Database: The database is updated automatically if you add new music to your PC with MAGIX Photo Manager MX Deluxe or delete old items. Alternatively, you can select the "Optimize database" function in the "Database" menu. Files that are no longer available but are still listed in the database (so-called "dead" entries) are then removed; moved files are located automatically.

Backups of files

Start: Starts the assistant for support with backup copies.

Reset: Manually excluded files will be offered again for backup.

Creates a backup copy of imported files in the following folder: Backup copies of imported files are inserted into the selected folder. You can normally leave this setting as it is.

Older program versions

Start: Searches for older program versions in order to add their database information and favorites.

Advanced mode

If this menu entry is activated with a check mark, then you will be working in advanced mode with all of MAGIX Photo Manager MX Deluxe's available functions. Click here, if you would like to return to easy mode and show only the basic program functions (check mark disappears).

Change screen

MAGIX Photo Manager MX Deluxe includes 2 home-made skins for you to decide between, depending on your taste.

Open "Window -> Change skin" and switch MAGIX Photo Manager MX Deluxe to a brighter background, if you desire. You can always select the other skin, if you want to.

Exit

Closes MAGIX Photo Manager MX Deluxe.

Keyboard shortcut: Alt + F4

Edit menu

Right click on a file in the photo overview to open the context menu where you can choose from several different options. While these can also be found in the button bar and in the menu, using the context menu is the most convenient and fastest method.

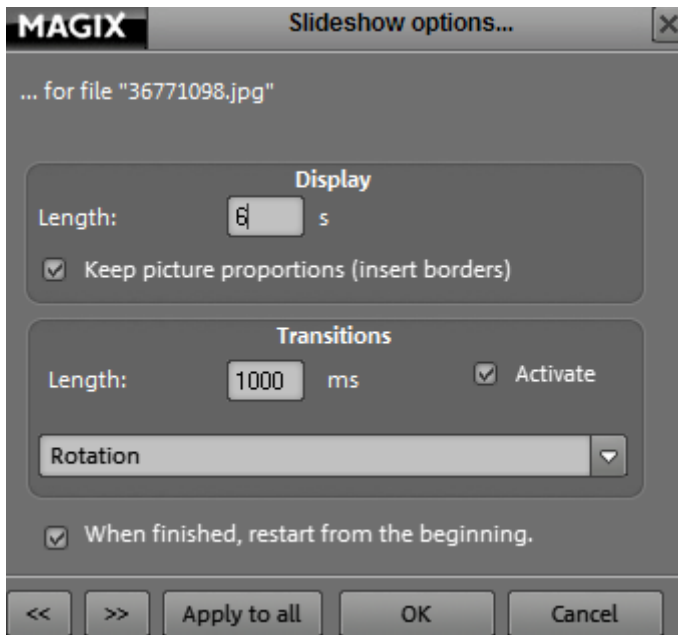
Optimize photo

To optimize (view page 47) your photos, click here and the corresponding functions will appear on the left.

Slideshow

View as slideshow: To create a slideshow with the pictures from one folder, it is enough to select one graphic file out of the folder and to select this function.

Slideshow options: Here you can access the "Slideshow options" dialog, which enables you to specify how long each slide should be displayed and the kind of transitions between pictures.



MAGIX Photo Viewer: This is a small extra program from MAGIX which offers additional options for presenting videos and slideshows. For example, a slideshow may be played back in Photo Viewer with different transition effects.

Export



This option provides different ways of saving images as files. Here, the same dialog opens as would when clicking on the button in the toolbar.

Please read the options in the "Export" (view page 69, view page 28) chapter.

Print

This command opens the print window for printing the selected image files.

Send as email...

MAGIX Online Album, MAGIX Print Studio: Send the photos and videos you like to your Online Album to present them online, or send pictures to the print service to get prints of your favorite images.

To email recipient...: This option opens your email program and inserts the selected photo into a new message as an attachment. Just enter the recipient and subject and send!

As ZIP to email recipient: This option opens your email program and inserts the selected photo into a new message as a compressed zip (with less volume). The zip file will have to be decompressed by the recipient to be able to view the photos.

Export to mobile device, export photo album to mobile device: Send the desired files or entire photo albums to the connected mobile device.

Adjust red-eye automatically

Select one or more pictures (even whole folders) and remove unnatural redeye automatically which are the results from using a flash.

Correct curved lines...

This function may be used to correct curved lines in pictures resulting from perspective distortions. "Curved lines" are lines and edges, which run together in an image, although they are parallel to each other in reality.

Assign categories automatically

MAGIX Photo Manager MX Deluxe can automatically assign your photos to specific categories. Select a folder or different images and activate the

"Automatically assign images to categories" in the "Edit" menu. Images will then be analyzed for certain image content and sorted into corresponding categories (e.g. night, sunset). The automatic categories may be found in the "Categories" tab under "Automatic categories".

This function should be understood as a rough presorting feature. Images may not always be assigned to categories correctly, and sometimes they may be assigned to completely different categories. This depends on the diversity of the photo's subject, which may be interpreted differently.

Create panorama image...

With only a single click you can create a panorama (view page 88) in MAGIX Photo Manager MX Deluxe. You can do this fully automatic or manually; try experimenting with it.

Create map...

Select locations on the map to save them as an image for a description of a trip route.

Note: Detailed help regarding this is available directly via this small program. Once it is opened, press F1 on the keyboard to open help.

Record audio comments

This option opens a recording window for recording sound via the PC's sound card. You can add a soundtrack to the selected photo. If you have a microphone connected to your PC, simply click on the recording button to start.

There's more info available here ->General buttons (view page 42) and Options -> Explorer (view page 109).

Find similar photos...

Here you can search for photos that resemble the selected photo's color and/or structure.

Please refer to the "Search in database" (view page 118) chapter.

Select all

This option lets you select all files of the current folder.

Shortcut: Ctrl + A

Cut

This option cuts all selected files and copies them to the Windows™ clipboard. You can then use the "Paste" command to copy them into a different folder.

Shortcut: Ctrl + X

Copy

This command copies the selected files to the Windows™ clipboard. You can then use the "Paste" command to copy them into a different folder.

Shortcut: Shift + C

Insert

With this command, the content of the Windows™ clipboard is inserted into the current folder.

Shortcut: Ctrl + V

Copy into folder

The marked files can be copied into any folder.

To do this select a destination folder and specify whether the file should be moved there from where it has been stored until now, or whether a copy should be created there.

Rename

The highlighted file can be renamed. Enter a new file name.

Multiple rename...

To adapt many music tracks that have many identical properties, use the multiple rename dialog to make changing the name of the selected files easier. Select one or several file(s) and then select this menu item.

More on "Multiple renaming".

Fade out

With this function you can fade out individual files. These files will be put into a special folder "Hidden files or folders" within the currently selected folder.

This way hidden files can be shown again if so desired. To do this, right-click on this folder and select the corresponding function from the context menu that appears.

Delete

The selected entry will be sent to the Recycle Bin. By holding down "Shift" the file will be directly deleted.

Shortcut: Shift + Del

Rebuild preview pictures

It may be the case that MAGIX Photo Manager MX Deluxe no longer shows the preview pictures of your files, but just the standard views according to the file types (for example: jpg or bmp). In such a case, select this function and MAGIX Photo Manager MX Deluxe will generate preview pictures again.

Delete the category

Removes the categories from the pictures.

Show in Windows Explorer

This option opens Windows Explorer and displays the storage location of the marked songs. In MAGIX Photo Manager MX Deluxe you can add further files to the database from Windows Explorer using drag and drop.

Edit properties (track info)

This option opens the properties dialog. You can add ID3 tag information to your file by entering it here. This information is also used for cataloging in the database correctly.

Library menu

Search database...

Click here and the search dialog in "Search the database" (view page 78) will open.

Add folder

For MAGIX Photo Manager MX Deluxe to add a specified folder on your computer to the database, you can either click through "My Computer" to the folder to add the files to the database automatically, or you can use the "Add folder" function.

- A dialog opens for you to enter the path to the folder. You also have the option to "Include subfolders": all subfolders which contain images will also be added to the database.
- "Monitor permanently": So that a folder is always in the most up-to-date condition, MAGIX Photo Manager MX Deluxe can monitor it permanently.

Note! The Database is actually composed of paths to the original files. The files remain at their original positions, and no copies are produced. If you launch a file via the Database, then **you are not opening a copy, but rather the original** file via the link!

Monitor folder

Here you can select which folders should be monitored continuously. This means that if contents of a folder located outside of MAGIX Photo Manager MX Deluxe are changed, then the database will be updated automatically the next time the program opens.

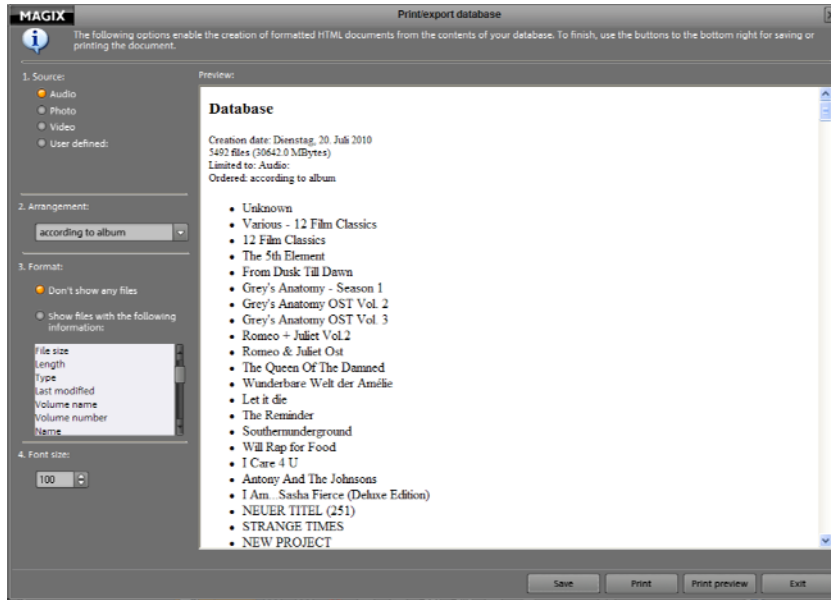
Tip: Do not select especially large folders (for example, "My Documents") so that the startup of MAGIX Photo Manager MX Deluxe isn't unnecessarily overloaded.

Optimize database...

This function allows you to change or delete database entries that refer to displaced or deleted files. This way you can keep your database up-to-date all the time.

Print export

Should you ever need a list of all audio, i.e. music files, photos or videos, then use the print export. Here you can create a list that contains all the information you want, in the view you want.



Statistics

Use this function to have statistics created for your database. Here, for example, you can see how large your database is in total and how many picture files are contained within it.

Load database...

Use this function to load saved databases. This can be used to restore albums, categories, monitored folders, etc.

Save database...

If you wish to save the current state of your database, use this function. This way you'll be sure that created albums, categories, etc. can always be reloaded.

Restore

MAGIX Photo Manager MX Deluxe automatically saves the state of the database after certain periods of time. This way, you can be sure even without a backup copy that older states of your database can be restored.

Delete entire database

If you want to delete a database so as to create a new empty one, you can use this function to do so.

Security menu

Create backup copy on CD/DVD

In order to ensure that your valuable material is not accidentally changed or even deleted, we recommend burning backup copies to CD or DVD after importing. If worst comes to worst, then you will always have original material to fall back on.

Further information can be found under "Backup copies on CD/DVD" (view page 94).

Settings...

MAGIX Photo Manager MX Deluxe can be set to automatically remind you to create backups. This way, you can completely avoid the loss of valuable photos without even having to think about it.

If you activate this support function, then you can specify the criteria for and time periods between back up reminders from MAGIX Photo Manager MX Deluxe.

Please read the chapter "File -> Options -> Database".

Create password-protected archive

This option creates a new ZIP archive. This, for example, enables space-saving compression of several files into a single ZIP file for sending in emails.

Unzip archive with password

This option is only available for ZIP files. The archive is opened and the included files are unzipped.

If, on creation, a password has been entered, it will be required before being unpacked. Without the correct password, you will not be able to unpack the archive.

Show backups from import

This option lets you display and select the backup copies that were created during the import process.

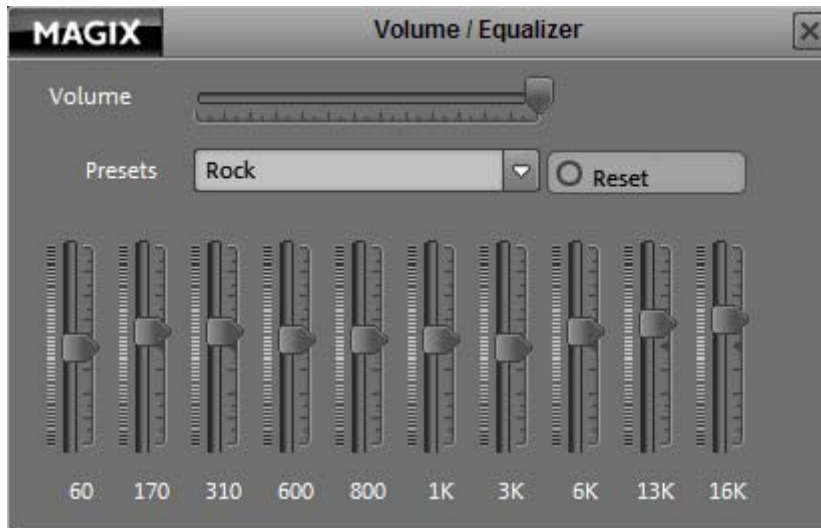
Windows menu

Slideshow monitor

Use this command to open the Slideshow Monitor. This will open in fullscreen by default.

Volume

Use this command to open the Equalizer and volume. These serve to adapt your sound to your listening requirements, to match what you may have come to expect from a HiFi.



For example, you can activate the "Dance_Electronic" preset to automatically set the corresponding settings.

Always in foreground

Prevents the program from being covered by other screens/windows

"Share" menu

Here you will find many options for quickly and easily publishing your data from the program on the web. Additionally, data transfer into other programs for specialized editing, if you have such programs installed, is enabled.

Tasks menu

In this menu you will find direct solutions and short video explanations on how to perform tasks in different topics. Not only will you find step-by-step instructions for sound and pictures here, you will also find quick access to lots of functions.

Help Menu

Help

This command is available for almost every feature of the program, and it opens the "Help" file for the corresponding topic. Use this command to get help on any of MAGIX Photo Manager MX Deluxe's functions.

Keyboard shortcut: F1

Start introductory video

The introductory video shows you how all the most important features work. Specific topics are explained in detail in additional tutorial videos.

Keyboard shortcut: Ctrl + F1

To play the introductory video you may have to insert the program CD.

Online Update

Connects directly to the online update page where you can get the latest version of your program.

Register online

This option opens the MAGIX homepage for online registration where you can register yourself as a MAGIX user.

Registration grants you access to the MAGIX support website <http://support.magix.net> (see support) where various program updates and help programs can be downloaded.

With the registration form supplied (start menu under "MAGIX Photo Manager MX Deluxe -> Service and support -> Register") you can register via post or fax. Simply print it out, fill it in, and send it off!

Keyboard shortcut: F12

Online tutorials

Interesting tutorials and useful tips for working with MAGIX Photo Manager MX Deluxe can be found on the MAGIX website.
An online connection is required.

magix.info

Help & get help: Directly from within the program, you'll be able to access magix.info, the new MAGIX Knowledge Base (view page 126). You'll find answers to all the most frequently asked questions about MAGIX products and multimedia in general. Couldn't find an answer to your particular question? No problem – just ask the question yourself!

MAGIX Screenshare

This function makes it possible for you to offer assistance to other users directly via the Internet, or to get help from others. To do this, you have to register MAGIX Photo Manager MX Deluxe first.

Hint: To inform the screensharing guests of exactly what is being shown, it is also a good idea to telephone or chat simultaneously.

Register as host for a screen transfer

1. If you want to start a screenshare instance yourself, then you have to register as a host first. To do this, open the menu "Share" and then select "Screen transfer as host...".
2. In the dialog you can enter a name for the screen session. Your user account name is used here by default.
3. Now click on "Start session". A small window will now open in the bottom right corner which displays the status of your screen session. A number will also be displayed (session ID) which serves as a password for your guests.
4. Start the screenshare instance.

Register as guest of a screen session

1. You have to register as a guest to view a screensharing instance. To do this, open the menu "Share" and then select "Screen transfer as guest...".
2. Enter the password you received from your host (8-digit session ID).
3. Now click on "Start session". A window will open displaying a smaller version of your host's screen.

Reset program settings to default...

This function is similar to the reset function – all settings will be reset to default as they were during the first program start.

Warning! This function erases all adjustments from every program user! Furthermore, all favorites, podcasts subscriptions, and timer tasks will be deleted.

About MAGIX Photo Manager MX Deluxe

Displays copyright info and version number of MAGIX Photo Manager MX Deluxe.

MAGIX services in detail

magix.info

Share your knowledge & get answers This MAGIX service offers you and the MAGIX Community at large a central platform for exchanging knowledge, photos, videos, and music, for discussing and evaluating, for communicating with one another, for presenting yourself, and networking with other members.

You will find the sections "Questions & Answers", "Show & Discuss", "Online Training", and "Chat" where you can play an active or passive role in the MAGIX Community. For this there's not only the www.magix.info portal, but magix.info directly in your product.

Ask questions online

If you have questions or problems with your MAGIX program or you're looking for tips & tricks concerning multimedia, then you're at the right place.

Display all questions & answers...

Use the questions which other community members have asked and the collective knowledge of the answers to improve your own working methods, to solve problems, and to get to know the details of MAGIX Photo Manager MX Deluxe.

Launch the online training center

Learn not only theoretically, but also practically what the program is capable of: "learning by doing", quickly and uncomplicated.

Let your friends view the contents of your MAGIX.info screen over the Internet on their PCs.

Ideal for viewing photos and videos together or for receiving support for questions arising during your creative workflow while using the program (a licensed client will be installed for this purpose).

MAGIX Online Album

In the MAGIX Online Album, you can post your favorite photos online and then send the link to your friends. All photos are immediately available from anywhere in the world on a professionally-designed photo website, in well-organized photo galleries, as full-screen slideshows, or in the form of a personal photo e-card.

- Personalized photo website in many designs.
- Unique Internet address (URL).
- Upload your pictures directly from a camera phone, send the link, and share the picture with other camera phone users.
- Full-screen online slideshows with fade effects and music.
- Send custom designed e-cards with your own photos.
- Share your photos with friends, including Internet management and password access to private albums.

Your photos online

MAGIX Online Album is available in three versions, of which the smallest (the FREE album with 500MB webspace for your photos) is entirely free.

The larger versions (CLASSIC or PREMIUM) are available for a monthly charge, but also come with many handy features, such as a faster website, 2,000 MB or 5,000 MB storage space, more website designs or access by mobile phone/PDA.

More information about prices and included services is available at www.magix-photos.com.

Just three easy steps: Within minutes your first pictures will appear on the Internet:

1. Select photos

Choose your favorite photos directly from the program and optimize them in just a few clicks. Put completed photo albums together and integrate music of your choice.

Do it all offline on your PC - saves you money! Then select "Services" from the program's menu bar "MAGIX Online Print Service -> Send selected".

2. Upload photos

In order to upload photos to your MAGIX Online Album simply log in using your email address. Naturally, access is protected via your personal password.

If you still don't have access, click on **Register now!** to activate your own album in just a few minutes. Then off you go!

3. Done! Your own personal photo website is finished

and your best photo memories are on the net. As a photo gallery or fully automatic slideshow (fullscreen).

Now, invite all your friends with just one click or show your photos on the road using your WAP-compatible camera phone.

Using your **MAGIX Online Media Manager**, you can quickly manage your photo website, upload photos and music, create new albums, add designs and text, and much more. All **online** without even having to download any extra software! Worldwide, easy, and quick in just a few clicks. At <http://www.magix-photos.com>

The following options are also available:

Send e-cards and photo emails

Send your photos as unique e-cards with great designs, or as a photo email to your friends and acquaintances.



Order photo prints and gifts

Order paper prints or great photo gifts from your MAGIX Online Album and have them delivered directly to your home, or pick them up from a photo lab in your area. Delivery time is usually just 2 - 3 days.

MAGIX Website Maker

Not only is Internet surfing easy! Thanks to MAGIX Website Maker creating websites also becomes child's play!

This service offers:

- Your desired domain (www.desiredname.com) and a subdomain (http://your-name.magix.net/website).
- 250 MB memory space with 5 email accounts, 1 GB each.
- Website Maker with website templates, intros. Also animations, text effects, form and design objects, picture and graphic templates, and buttons. And everything without any ad banners!
- Photo (*.jpeg), video (*.wmv) & music (*.mp3) options.
- Additional software: MAGIX web mail for managing your email inbox.

MAGIX Website Maker offers 3 months of free, non-binding service. This way, you have enough time to find out everything about MAGIX Website Maker and all existing possibilities for editing and managing your homepage.

MAGIX Website Maker offers everything for the perfect Flash website:

- **Design templates:** Numerous high-quality website templates in the latest professional Flash design with pre-finished, customizable subpages, start pages, profile pages, photo pages, video pages, and much more.
 - **Text & text effects:** Freely positionable text fields with fantastic fonts and animated text effects can be added and individually formatted with ease.
 - **Multimedia content:** Select your favorite photos, spectacular slideshows, videos and an online video player with your own background music, or integrate it all as an online music player with playlists.
 - **Decorative elements:** Attractive design objects, plenty of vector shapes, background images, buttons, and much more offer more possibilities for designing unique websites than ever.
 - **Animation objects:** Large selection of dynamic, impressive animation objects for breathtaking, moving websites.
 - **Links:** Easily add links to your own or external websites.
 - **Top extras:** Enhance your website with a visitor counter, guest book, contact form, and many other useful extras.
- Export function:** Conveniently add individual components of your website (e.g. video player, slideshow, online music player) or even the entire website to external sites as an embedded website.

Proceed as follows:

After registering your desired domain, you can start creating your website right away.

1. First, select a design for your website in MAGIX Website Maker
2. If you would like to place an intro (start animation) at the start of your domain, select your intro as a next step.
3. Now you can replace the mock text with your own text as you see fit. All free-standing elements on all webpages can also be moved as you please. To do so, click to select the element and move it using your mouse.
4. Once everything is just how you want it, you can put your page online, so that your domain can be accessed.

Catooh – the Online Content Library

Catooh provides you with high-quality photos, videos, and music for every theme, expanded by intelligent iContent with professional Soundpools, DVD menu templates, and brilliant MAGIX ShowMaker styles to help you make your photo, video, and music projects reality. All of this is available directly from your MAGIX software.

Just choose "Share" from the menu "Catooh" to set up an Internet connection.

Browse through the thematically sorted categories or view the results directly by entering a keyword. After downloading, you can drag the objects from the Media Pool directly into your arrangement.

Tip: Read the introduction online <http://rdir.magix.net/?page=JRF6LASAR2Z3!>

If you still have questions

Task assistant

The task assistant is your information center. It helps you complete your tasks and provides support at every step. Not only will you find clear videos with step-by-step instructions, but you'll also find quick access to a lot of functions.

The task assistant chapters can be found in the "Tasks" menu.

Tips for program help

The "Help" file features hints on how to use the program and additional information. Many important terms are indicated in the text in *italics* and an explanation to them is reached by clicking on them.

Context help: Press the "F1" key at any point in the opened program and the help file will open with the matching topic (context help).

Search function: Use the search function to find out information about specific words. Enter either the individual word or use logical operators (OR, AND, NEAR) to refine your search if you have several search words.

- **"OR"** (between two words): All topics which contain both words or one of the words will be listed.
- **"AND"** (between two words): Only those topics will be listed which contain both words.
- **"NEAR"** (between two words): Only those topics will be listed which contain both words. A maximum of six other words may be added between the search terms.
- **"NOT"** (before a word): Topics which contain this word will **not** be listed.

Print: Use the help program's print function to make a printout of individual topics or entire sections. The print button is located at the top of the help window in the toolbar.

PDF Manual

Much like the help feature, the electronic PDF manual contains the entire program documentation. You can find it under "Start -> Programs -> MAGIX Photo Manager MX Deluxe" in the "Documentation" subfolder.

Note: To view the PDF file you will need the "Foxit Reader" application; you can find it on the MAGIX Photo Manager MX Deluxe installation DVD.

Restrictions

Tip regarding special program versions: This documentation describes the full functionality of MAGIX Photo Manager MX Deluxe. However, you may be using a restricted version of MAGIX Photo Manager MX Deluxe, and full functionality may not be available.

Glossary

A

audioid

audioid is a process used to determine the title and artist name base on musical properties. An Internet connection is required to access the audioid database.

AVI

The AVI format (**Audio Video Interleaved**) isn't actually a proper video format! Rather, it is a so-called "container" for which the conventions for transferring audio and video files to the program are only loosely defined. More in this topic can be found in General notes on AVI videos.

B

Browser

A browser (also known as web browser, or Internet browser) is a computer program that displays websites. The best-known browsers are Internet Explorer, Firefox, Safari, and Opera.

Button

Refers to an element of the graphic user interface of a program. The button initiates an action in the program via left mouse click.

Button

Refers to an element of the graphic user interface of a program. The button initiates an action in the program via left mouse click.

C

Cache

Simply stated, this is a temporary folder where frequently accessed files are saved so that they can be quickly launched while you are working.

CC

CC stands for "Connectivity Co-ordination" and describes how the change of a domain name from one provider to another occurs (domain transfer).

CDA

Short for "audio CD" produced in accordance with the so-called "Red Book" standard. It contains audio files (music) and can be played in CD-ROM drives as well as in regular CD players in stereos.

Clip level

Signifies the volume level at which the recorded signal is overmodulated, or "clipped".

Clipboard

The clipboard is used to temporarily store objects during execution of commands like "copy" and "cut".

Clipboard

The clipboard is used to temporarily store objects during execution of commands like "copy" and "cut".

Context menu

Context menu can be reached by right clicking on a selected object. It offers functions which are available and can be expected in the given context.

Copyright

Protection of intellectual and creative property against unauthorized copying.

Copyright

Protection of intellectual and creative property against unauthorized copying.

CPU

Central processing unit: The name for the main processor of the computer (CPU). Modern computers have even two or more processors, or one processor with several cores.

D**Dialog**

A dialog opens in a new window and lets the user interact with the program. This means that the dialog can present information to the user and/or expects to receive input from the user.

A dialog can contain various user elements which can be manipulated by a simple mouse click. Keyboard entries are also possible.

Disc project

A project includes everything that you want to put on your CD and DVD. This normally contains one or more slideshows and includes a menu structure/menu design which allows you to choose a slidehsow later on the CD or DVD.

Disc types

The disc types determines the format and medium (CD, DVD, Blu-ray disc, etc.) to which the current project will be burned.

DNS

The abbreviation DNS stands for Domain Name Service and refers to a provider of Internet services that registers domain names for customers.

Domain

A domain is the website's Internet address. It consists of the name of the Internet protocol (usually http://), the computer or network name (such as www), the second-level domain (such as magix), and the top level domain (like .com, .net).

Altogether we have: protocol://networkname.second-level-domain.top-level-domain (such as "http://www.magix.com").

Domains are allocated by a country's so-called NIC (Network Information Center). In Germany the DENIC is responsible for the release of domains.

Domain transfer

See CC. If you already have a domain, you can move it from your previous provider to another provider.

Drag & drop

Enables files and objects to be moved freely between various applications (or within an application) by dragging the object and letting it drop using the mouse cursor.

F**Fader**

Used for visual input of values. Similar to volume control on a mixing board, you can control various parameters by sliding the fader. A very common example for this is the zoom slider that lets you see a picture in more detail.

Field

A half-image, two of which combine to produce a frame (see interlace).

Flip menu

Drop down menus create menus consisting of lists of selectable choices. They look very similar to text input fields, but have a button with a downward-pointing symbol on the right-hand side.

Frame

A frame is a single image from a video sequence which also called a full image.

A PAL video contains 25 frames per second; NTSC contains 29.97 frames.

H

Handles

Handles are the five little rectangles at the edges of selected objects. All curve points can be moved by holding down the left mouse button.

Length handles: Bottom right and bottom left. You can use them to change the length of an object.

Fade handles: Top right and top left. These can be used to softly fade an object in or out.

Volume/Brightness handle: Above-center. You can use it to adjust the volume or the brightness.

Hard disk

Storage medium with the largest storage capacity where the operating system(s), programs, and files are saved. A hard disk can be built into the computer, but there are also external hard disks which can be used with different computers via a USB connection (portable drives or external hard disk).

Hard disk drive

Storage medium with the largest storage capacity where the operating system(s), programs, and files are saved. A hard disk can be built into the computer, but there are also external hard disks which can be used with different computers via a USB connection (portable drives or external hard disk).

Hardware

The all-encompassing name for all internal components of a computer. For example hard disk, graphics card, mainboard, etc. External peripheral devices are also considered hardware, i.e. printer, scanner, monitor, etc. The synchronization of single hardware components is coordinated by the software.

HDD

Storage medium with the largest storage capacity where the operating system(s), programs, and files are saved. A hard disk can be built into the computer, but there are also external hard disks which can be used with different computers via a USB connection (portable drives or external hard disk).

HDTV

This acronym stands for "**H**igh **D**efinition **T**ele**v**ision.

HTTP

Stands for Hyper Text Transfer Protocol and is used for transferring websites onto the Internet (from web server to the browser). For this reason, the abbreviation **http://** always comes before the Internet address. This is automatically inserted and does not have to be entered when entering the Internet address.

Hyperlink

Hyperlinks (or in short "links") are references to other websites/online documents (or other computer networks). They build the base of the World Wide Web (WWW) as it is only via these hyperlinks that networking or interlinking between the billions of website out there is actually possible.

I**ID3 tags**

ID3 tags contain title information that can be added to a music title. This includes the title, artist, album, as well as the genre, year of release, and other criteria that can help searching through a database. The database is created using this information.

Info: Title information will only be saved for MP3s in the so-called ID3 tags (Identify an MP3), but other formats offer similar possibilities, like "Vorbis comment" for the OGG Vorbis format, for example.

Image

An image is a representation of a CD, DVD, hard drive, or another storage medium that is saved as a file.

The difference from a copy or backup is that an image contains information about the structure of the original storage medium, and not just individual files. This enables 01:01 copies of complete storage media to be created.

Caution! Copyright laws forbid copying of commercial CDs/DVDs, and for this reason, this process can be prohibited by copy protection.

IMAP

Stands for Internet Message Access Protocol and is an advanced process of receiving emails.

Interlace

Describes the creation of a full image from 2 half-images (fields).

In this process, even and odd lines are alternately assigned to one of the two fields.

The human eye perceives both of the projected half-images as a single full image, so that despite the slow image repetition rate (25 Hz for PAL, 29.97 for NTSC) a subjectively fluid image is seen.

Intro

"Intro" means the introduction or opening credits of a movie.

J**jpx**

A format developed by MAGIX which is used for photo editing. It enables free experimentation with effects without altering the original file. The effects settings are also displayed when the photos are opened using a different MAGIX program.

M**Menu**

Menus contain practically all function of a program. They can be opened using a simple mouse click on the corresponding menu. Keyboard shortcuts, if available, are also found at the end of menu entries.

The graphical surface of a CD/DVD will also be represented as a menu.

Menu bar

Almost every program has a menu bar. It can normally be found underneath the title line of the program. A simple mouse click opens a corresponding menu.

MIDI

MIDI files do not contain the actual sounds like audio files, but only the note control information which can be interpreted during playback by the synthesizer chip on the sound card or an external synthesizer.

Motherboard

This is the centerpiece of hardware components of a computer. All other hardware components like CPU, RAM, hard disk, additional drives, graphics cards, as well as other cards for specialized uses are connected to the motherboard.

Motherboard

This is the centerpiece of hardware components of a computer. All other hardware components like CPU, RAM, hard disk, additional drives, graphics cards, as well as other cards for specialized uses are connected to the motherboard.

Motherboard

This is the centerpiece of hardware components of a computer. All other hardware components like CPU, RAM, hard disk, additional drives, graphics cards, as well as other cards for specialized uses are connected to the motherboard.

MOV

MOV is a video and audio format developed by Apple, which has since become widely used with Windows. QuickTime supports lots of compression technology, which make it possible to optimize audio and video and even graphics for the Internet and multimedia/video applications. Conventional (hardware) DVD players are not able to play this format.

MP3

MP3 (actually MPEG-1 layer 3) is currently the most important standard for compressing audio files.

MPEG

MPEG is short for "Moving Picture Experts Group" and refers to a committee concerned with the standardization of video and audio data compression as well as container formats.

MS audio

A process developed by Microsoft for compressing audio files with properties similar to those of MP3.

MXV

This is the MAGIX video format for quicker processing with MAGIX products. It offers very low loss of quality, but it cannot be played via conventional DVD players.

N**Noise Sample**

Sample of a noise that is to be removed

NTSC (USA, Japan)

NTSC stands for "**N**ational **T**elevision **S**ystems **C**ommittee". This is a US institution that defined the first color carrier system for TV which is now used in most of America and some East Asian countries.

The image repetition rate for NTSC is 29.97 Hz.

Numeric keypad

Also known as the numpad, or the number block.

O**OGG VORBIS**

This is a new, royalty-free format with similar properties to MP3.

P**PAL (Europe)**

Phase **A**lternating **L**ine, or **PAL**, is a process for color transmission for analog TV that is primarily used in Europe, but also in Australia, South America, and many African and Asian countries.

The image repetition rate for PAL is 25 Hz.

Play marker

The play marker is a red vertical line which moves from left to right during playback. It indicates the current play position.

Playlist

Arrange your songs in playlists from various sources in different formats and in whatever way you like, sometimes updated daily.

Important: Playlists are only links to songs on your hard drive or in your CD drive.

When you add a song to your playlist whose real source is a CD in your computer's drive, the song will no longer be playable when the CD is removed from the drive.

Similarly, when you move a folder on your hard drive, the playlist will no longer be able to play the song, since the link is no longer valid.

For the latter, however, there is a simple solution: If you know where the song has been saved, then you can redefine the path. A corresponding dialog window is provided for this purpose. You can reset the path by navigating through the Explorer folders. The playlist is now correct once again.

Plug-in

Plug-ins are additional programs that expand the functionality of the main program. They are inserted into the main program.

Podcast

Think of a podcast as something like a radio station on the Internet. Regular Internet radio stations "transmit" in real time, which means that you can simply listen to the program that's playing and edit it. Podcasting is different. The programs are preproduced and loaded to an Internet server for downloading. As a listener you can subscribe to the podcast and the files will be downloaded at a specified time for you to listen to them whenever you like, for example on the go via your portable player.

Podcasting

Podcast is the name for a relatively new Internet transfer form. It is made up of "**pod**" from "iPod", the name of a popular portable MP3 player, and the term "casting" for broadcasting content to a wide group of listeners/viewers.

A podcast is therefore something like an online radio station. "Broadcasting" web radio stations means you can only listen to and record the currently broadcast radio station. Podcasting is different. You as the listener can subscribe to the podcast and the files will be downloaded at a specific time and you can listen to them whenever you like, for example, on the move with your portable player. The shows are pre-produced and placed on an Internet server for download.

POP3

Stands for Post Office Protocol (version 3) and is used in standard email programs for receiving email (for example, Outlook Express). POP3 enables email to be collected by the provider's email server and loaded into your email program.

Project

A project includes everything that you want to put on your CD and DVD. This normally contains one or more slideshows and includes a menu structure/menu design which allows you to choose a slidehsow later on the CD or DVD.

Project

A "Disc project" includes everything that you want to put on your CD and DVD.

This normally contains one or more movies and includes a menu structure/menu design which allows you to choose a movie later on the CD or DVD.

Provider

A provider or ISP (Internet Service Provider) offers Internet services like webhosting or domains (DNS). In relation to the MAGIX Website Service, MAGIX is the provider.

R**RAM (Random Access Memory)**

This is a hardware component of a computer. RAM is needed to temporarily save files. This type of storage is erased when the computer is shut down or reset. The larger this storage is, the faster you can work with programs to change and save files.

Ratio:

The aspect ratio is the ratio between the height and width of a rectangle. In practice these are photos, screens or projection screens. This method can also be used to describe the aspect ratio of pixels.

Here are some examples of typical aspect ratios: at home **4:3**, **16:9** (typical for TV sets), or **16:10** (widescreen flat screens, widescreen notebooks), **3:2** for 35 mm films and photos. In cinemas you mostly find **1.85:1**

Red Book

Specific standards have been established for the different CD types in order to unify their data structure and to make them compatible with the different CD drives. Their names refer to the color of the books where these standards were written.

The term "Red Book" is common language for the Compact Disc Audio Standard. The requirements listed here have to be observed for industrial CP production. Audio CD players only read CDs created according to the Red Book format. It is therefore necessary to first convert PC files into this format before writing them onto an audio disc compatible with any audio CD player.

Restore

Restoration of files originating from a backup will be called "Restoring".

RM

RealMedia includes all of the media formats from software developer RealNetworks. RealMedia especially refers to the "RealVideo" video format and the "RealAudio" sound format. The quality of RealVideo files is comparably good at high compression rates, but does have some loss of quality. These formats cannot be played back by (hardware) DVD players.

S**Screenshot**

A screenshot is an image composed of all visible screen elements (messages, open dialogs, etc.) at a certain time. By pressing the "Print screen" key on the keyboard, this image is saved into the clipboard. Next, open a program which can edit images and select "Insert" (shortcut "Ctrl+V") in a new document to add the screenshot for editing and saving.

Note: Press "Alt + Print screen" on the keyboard to capture the active window only.

Slider

Used for visual input of values. Similar to volume control on a mixing board, you can control various parameters by sliding the fader. A very common example for this is the zoom slider that lets you see a picture in more detail.

Slideshow

An arrangement of various objects (photos, text, sound, etc.) is called a slide show. Slideshows can be saved separately as "MVM" files.

SMTP

Stands for Simple Mail Transfer Protocol and enables the exchange of emails across computer networks.

Software

The name for all non-physical functional components of a computer. This primarily includes computer programs and files that are meant to be used by computer programs.

Submenu

Besides normal entries, a menu can contain submenus that offer additional functions. This makes menus more comprehensive.

Super Video CD (SVCD)

The Super Video CD (SVCD) is a technological advancement of the video CD. SVCDs are also like VCD-specified CD-ROMs which can be played using either a Super Video CD player (connected to the television), or directly with the CD-ROM drive of a computer. Many DVD players can also play SVCDs. MPEG-2 and the increase of the data transfer rate makes it hard to tell videos from videos in DVD quality apart.

Resolution: SVCDs use the better MPEG-2 encoder in a standardized resolution of 480 x 576 (PAL). The MPEG-2 format offers a maximum resolution of up to 720 x 576 points and improved compression methods characterized by excellent image definition and homogeneity.

Hard disk capacity: An average 90-minute movie must be spread across 3 CDs. On one SVCD you can get about 30 minutes of good-quality movie.

Encoder setting: Compared to the VCD with 1.3, the data transfer rate is doubled to 2.6 Mbit/s.

MPEG-2 format introduces the so-called variable bit rate (VBR). In contrast to the constant bit rate (CBR) of the MPEG-1 encoders, this encoder has the option of using more bits for movement-intensive sections, as well as saving bits if picture content remains the same.

T

Toolbar

Here you will find small buttons that provide a function when clicked. For example, you can cut out a selected object by clicking on the scissors.

Toolbar

All basic functions of the corresponding program can be found here. The corresponding functions can be called up via mouse click.

Top-level domain

Top-level domains (TLD) are always those separated by a dot at the end of an Internet address (for example, "http://www.magix.com" < here, .com is the top-level domain). Among these are also country top-level domains, such as .co.uk, .us, .de as well as so-called generic top-level domains like .net, .org, .biz, and so on.

Traffic

Traffic (data transmission) occurs within your MAGIX Website Service as soon as data is transferred across the Internet: for example, when uploading or downloading files to your website or when someone else opens your website.

U

Universal Plug & Play; UPnP

Universal Plug 'n' Play (UPnP) is a network protocol which enables data exchange between different devices (PCs, hi-fi systems, video cameras, PDAs, and web servers). UPnP allows various devices to participate in network-wide communication, i.e. the initialization of functions and other device functions. Long-winded configuring or installing of drivers is not required as the devices can handle their own functions and data sources by themselves. Find out more at www.upnp.org.

Hint: To work with UPnP you have to activate it first. This can be found under "Options" ("Y" -> UPnP).

URL

URL stands for Uniform Resource Locator and describes where a source can be found online (for example, a website). The address or the path to the storage location of a file on your computer is known as a URL. Often the term URL is used as a term for the domain. The URL for the MAGIX website is: <http://www.magix.co.uk>

V**VST and DirectX plug-ins**

Plug-ins are additional programs that expand the functionality of the main program. They are inserted into the main program.

Two standards exist for audio editing: VST (Steinberg) and DirectX (Microsoft). VST has asserted itself stronger in the current market.

W**WAV**

Wave (*.WAV) is a standard uncompressed audio format.

Wave

Wave (*.WAV) is a standard uncompressed audio format.

Wave file

Wave (*.WAV) is a standard uncompressed audio format.

Webhosting

This means that an Internet Service Provider makes domains and webspace available to its customers. With the MAGIX Website Service, MAGIX provides webhosting to its customers.

Webmail

Webmail enables the customer to view and receive the contents of their email inbox without having to install email software on their computer. Customers of the MAGIX Website Service can use MAGIX Webmail for this.

Webmaster

A webmaster is responsible for the administration and maintenance of a website. Often, the webmaster is also the owner of the website as well as the domain that belongs to it. Once you have registered a domain in the MAGIX Website Service, an email account will automatically be set up, for example: "mailto:webmaster@domainname.co.uk".

Webserver

Webserver refers to the computer on which your host saves your website's pages and which makes your pages accessible on the Internet 24-hours a day.

WMA

A process developed by Microsoft for compressing audio files with properties similar to those of MP3.

WMV

Windows Media Video (WMV) is a trademark video codec from Microsoft. If you have Windows installed on your PC, then playing WMV files shouldn't be a problem. Only a few (hardware) DVD players are able to play this format. Read more about this in your DVD player's manual.

This video format is very good for web videos as it allows relatively high compression rates.

World Wide Web (WWW)

WWW stands for "World Wide Web" and is the most used service of the Internet. On the WWW, web browsers (for example, Internet Explorer) are used to display information via websites. The process is colloquially called "Surfing the Internet".

Z**Zip**

ZIP is a file format for archiving your files. The original file is reduced and then restored to its original size after it is unpacked without losing any quality.

Index

A

About MAGIX Photo Manager MX Deluxe	125
Add folder	59, 118
Add folder to the database	32, 59, 64
Additional export functions	74
Additional import functions	62
Adjust properties	60
Adjust red-eye automatically	115
Advanced functions	24, 32, 52
Advanced mode	113
Advanced mode & basic mode	31
Advanced settings	96
Album view	13, 43, 46
Album view buttons	46
Albums	39
Always in foreground	122
Assign categories automatically	115
audioid	133
Automatic categories	38
Automatic photo selection	32, 82
AVI	133

B

Basic functions	24, 25, 50
Browser	133
Burn	28
Burner information	107
Button	133
Buttons	37, 48
Buttons below the overview	13, 32, 44
Buttons in general	43, 116

C

Cache	133
Calendar	36
Categories	11, 22, 32, 37
Catooh – the Online Content Library	130
CC	133

CD/DVD burner	107
CDA	134
Change screen	113
Change the order of the photos	47
Clip level	134
Clipboard	134
Connecting digital picture frames	102
Context menu	134
Copy	117
Copy into folder	117
Copyright	2, 134
Correct curved lines...	115
CPU	134
Create a self-executing slideshow	73
Create and install desktop background	72
Create and install screensaver	71
Create backup copy on CD/DVD	95, 121
Create calendar-based desktop background	73
Create categories	11, 17, 22, 32
Create map	87
Create map...	106, 116
Create new album	101
Create panorama image	88, 116
Create panorama image...	116
Create password-protected archive	121
Create slideshow	65, 71
Create slideshows and photo albums	25
Create slideshows and videos from file(s)	71
Create, fill, and save a new album	46
Creative	71
Crop image	103
Cut	117

D

Database	32, 38, 59
Database import dialog	64
Delete	118
Delete entire database	121
Delete the category	118
Dialog	134
Digital picture frames	102
Disc info	107
Disc project	135
Disc types	135

DNS	135
Domain	135
Domain transfer	135
Drag & drop	135

E

Edit	56
Edit image externally	32, 54
Edit menu	114
Edit properties (track info)	118
Equalizer	90
Exit	113
Export	11, 29, 32, 69, 107, 115
Export dialog	68
Export files one by one	69
Export pictures	103, 104
Export to mobile device...	73
Exporting the photo album	107

F

Fade out	117
Fader	135
Field	136
File	55
File information	32, 41
File menu	106
Find pictures and make a selection	11, 22, 59, 77
Find similar photos...	17, 22, 116
Finding photos	16
Flip menu	136
Folder	34
Forwarding	73
Frame	136
Functions in detail	91

H

Handles	136
Hard disk	136
Hard disk drive	136
Hardware	137
HDD	137
HDTV	137

Help	123
Help Menu	123
HTTP	137
Hyperlink	137

I

ID3 tags	137
If you still have questions	131
Image	138
Image selection	102
IMAP	138
Import	61
Import from external devices	32, 61
Import from your MAGIX Online Album	32, 63, 98, 99
Importing photos	11, 15
Insert	117
Inserting and editing images from the clipboard	93
Interface – The layout of MAGIX Photo Manager MX Deluxe	31
Interlace	138
Intro	138
Introduction	11

J

jpx	138
-----	-----

K

Keyboard shortcuts	105
--------------------	-----

L

Library menu	31, 59, 118
Load database...	120
Load files	66

M

MAGIX Foto Designer 7	97
MAGIX News Center	10
MAGIX Online Album	9, 32, 71, 127
MAGIX Online World	9
MAGIX Photo Viewer	33, 85
MAGIX Screenshare	124

MAGIX services in detail	126
MAGIX Website Maker	9, 129
MAGIX Xtreme Print Center	108
magix.info	124, 126
Manage photos	14
Managing your Online Album	33, 100
Menu	13, 106, 138
Menu bar	139
Menus in the slideshow monitor	55
MIDI	139
Monitor folder	119
More about MAGIX	9
More useful functions	59
Motherboard	139
MOV	139
MP3	139
MPEG	140
MS audio	140
Multiple rename	91
Multiple rename...	117
Multi-user support	94, 108
Music	67
MXV	140

N

Navigation and info tabs	13, 33
New directory	106
New photo album	106
Noise Sample	140
Non-destructive and destructive work	49
NTSC (USA, Japan)	140
Numeric keypad	140

O

OGG VORBIS	140
Online Album	29
Online tutorials	124
Online Update	123
Open photo album	106
Optimize database...	119
Optimize photo	114
Optimize photos	11, 24
Optimize view	44, 47, 114

Options	108
Options > Audio	110
Options > Database	112
Options -> Explorer	109, 116
Options > File formats	110
Options > General options	108
Options > Path settings	110
Options > Photo	111
Order photo prints	32, 33, 85
Overview of the program screen	13

P

PAL (Europe)	140
PDF Manual	132
Permitted formats	103
Photo overview	13, 42, 47
Photo prints	30
Photos and videos	35
Photos as ZIP	74
Play marker	141
Playlist	141
Plug-in	141
Podcast	141
Podcasting	141
POP3	142
Present your photos	11, 28, 69, 107, 115
Presto!	68
Preview / Media Player	41
Print	115
Print and order pictures	83
Print export	120
Print photos	27, 32, 83
Project	142
Provider	142

Q

Quick start	14
-------------	----

R

RAM (Random Access Memory)	142
Ratio:	143
Rebuild preview pictures	118

Recognize faces on pictures (FaceID™)	32, 80
Record audio comments	116
Red Book	143
Register as guest of a screen session	125
Register as host for a screen transfer	124
Register online	123
Registration	98
Rename	117
Reset program settings to default...	125
Restore	121, 143
Restrictions	13, 132
RM	143

S

Save database...	120
Save photo album	106
Save photo album as...	106
Scan	107
Scan photos	23
Scan with	107
Screenshot	143
Search database...	116, 118
Search for EXIF content	79
Search for similar photos	32, 77
Search on hard disk	79
Search the database	78, 118
Secure data	
Burn	75
Security menu	31, 121
Select all	116
Select pictures according to criteria	11, 18
Select source	107
Select the best shots	19
Selecting photos	45
Send as email...	115
Send media to Online Album	33, 98
Send photos via e-mail as a ZIP	74
Sending photos via email	73
Serial number	8
Settings...	121
Shortcuts	56
Show backups from import	122
Show in Windows Explorer	118
Show photos	44, 45

Slider	144
Slideshow	114, 144
Slideshow context menu	57
Slideshow monitor	55, 122
Slideshow monitor buttons	57
SMTP	144
Software	144
Sound in picture support	12
Start	66
Start introductory video	123
Statistics	120
Style	67
Submenu	144
Super Video CD (SVCD)	144
Support	6
Supported formats	12

T

Tag people on photos	20
Task assistant	131
Tasks menu	31, 123
Tips for creating panoramas	89
Tips for program help	131
Toolbar	145
Toolbars	32
Top-level domain	145
Traffic	145

U

Uninstalling the program	8
Unzip archive with password	121
Universal Plug & Play	145
URL	146
Use music	47

V

Video	111
View	56
Viewing photos	16
Volume	122
VST and DirectX plug-ins	146

W

WAV	146
Wave	146
Wave file	146
Webhosting	146
Webmail	146
Webmaster	146
Webserver	147
What is MAGIX Photo Manager MX Deluxe?	11
Windows menu	122
WMA	147
WMV	147
Work in networks	93
Working with MAGIX Online Album	98
World Wide Web (WWW)	147

Z

Zip	147
-----	-----