



MOTOROLA

Start Here >>>

MOTOSTART

H500 Bluetooth® Handsfree Headset

Get Connected in 4 Quick Steps

- 1 - CHARGE
- 2 - START BLUETOOTH FEATURE
- 3 - PAIR
- 4 - TEST AND USE



BEFORE YOU BEGIN



Before using this product, read the Important Safety and Legal Information pamphlet and follow its instructions.

Take a moment before you get started to familiarize yourself with your new H500 Handsfree Headset.



1 CHARGE Your Headset's Battery



Charge your headset's battery for 2 hours:



- 1 Plug the Motorola charger into the end of the headset.

The blue indicator light turns on when the battery is charging. It may take up to 1 minute for the light to turn on. When the headset's battery is fully charged (about 2 hours), the blue indicator light turns off.

- 2 Unplug the charger from the headset.

Note: Headset is not functional while charging.

2 START BLUETOOTH Feature On Your Phone



Your phone's Bluetooth feature is off by default. To use your headset, turn on the Bluetooth feature in your phone.

For most Motorola phones:

- 1 Select (Menu) > **Settings** > **Connection** > **Bluetooth Link** > **Setup**.
- 2 Scroll to **Power**.
- 3 Press **Change**.
- 4 Scroll to **On**.

- 5 Press **Select** to turn on the Bluetooth feature. Bluetooth feature remains on until you turn it off.

Note: These steps are for most Motorola phones. For other phones, see your phone's user's guide.

TROUBLESHOOTING

My phone does not find my headset.
Make sure the blue light on your headset is steadily lit when your phone is searching for devices (see step 3).

My headset worked before but now it's not working.
Make sure your phone is on and the Bluetooth feature is turned on in your phone (see step 2). If the Bluetooth feature has been turned off or was turned on only temporarily, you may need to restart the Bluetooth feature (see step 2). If you have confirmed the Bluetooth feature is on in your phone, pair your phone and headset again (see step 3).

Motorola, Inc.
Consumer Advocacy Office
1307 East Algonquin Road
Schaumburg, IL 60196 USA

Guide Number: 6809494A56-A

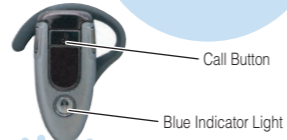
MOTOROLA and the Stylized M Logo are registered in the US Patent & Trademark Office. The Bluetooth trademarks are owned by their proprietor and used by Motorola, Inc. under license. All other product or service names are the property of their respective owners. © Motorola, Inc. 2005.

3 PAIR Your Headset



Step A - PUT HEADSET IN PAIRING MODE

Before you can use your headset, you must pair (link) it with your phone.



- 1 With the headset power off, press and hold the Call button for 6 to 10 seconds until the blue indicator light turns on and remains steadily lit. (The light will flash while you hold the Call button.)

- 2 If the indicator light is flashing or does not remain steadily lit, turn off the headset and repeat step 1.

Note: To turn off headset, see "Turning On and Off" on the reverse side of this guide.

PAIR Your Phone



Step B - SET THE PHONE TO LOOK FOR YOUR HEADSET

For most Motorola phones:

- 1 Select (Menu) > **Settings** > **Connection** > **Bluetooth Link** > **Handsfree** > **Look for Devices**.
The phone lists all Bluetooth devices it finds.
- 2 Select **Motorola H500**.
- 3 Press **OK** or **Yes** to pair (link) the handsfree device.
- 4 Enter the passkey **0000** and press **OK**.
Note: Passkey cannot be changed from 0000.

When your headset is successfully paired with your phone, the blue indicator light changes from steadily lit to flashing.

Note: These steps are for most Motorola phones. For other phones, see your phone's user's guide.

4 TEST AND USE



Your phone and headset are now paired and ready to make and receive calls. To confirm they are operating properly, make a call:

- 1 Place the headset over your ear. See "Wearing the Headset" on the reverse side of this guide.
- 2 On your phone, dial the number you want to call and press the **Send** key.
- 3 If your phone and headset are successfully paired, you will hear ringing on the headset.

After you have successfully paired your phone and headset, you do not need to repeat these initial setup steps each time you use the headset.

USING YOUR H500

See **Features and Functions Guide** on the reverse side of this guide for information on using your H500.



Features and Functions Guide

H500 Bluetooth® Handsfree Headset

! IMPORTANT:
Be sure to first follow the **MOTOSTART** Quick Start Guide on the reverse side of this guide to complete initial setup of your H500.

TURNING ON AND OFF

To turn your headset on, press and hold the Call button until the indicator light flashes. Then, release the button.

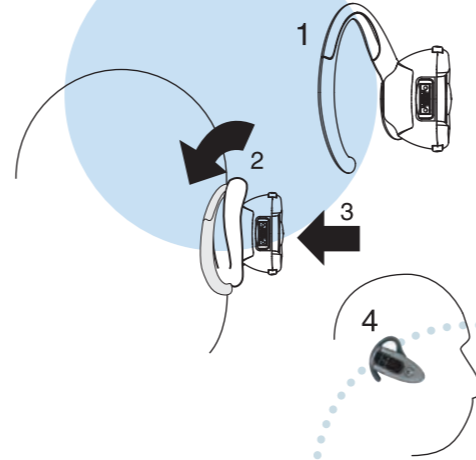
To turn your headset off, press and hold the Call button until the indicator light flashes rapidly and then turns off.

To conserve battery power, turn off your headset when you don't plan to use it for a while.



WEARING THE HEADSET

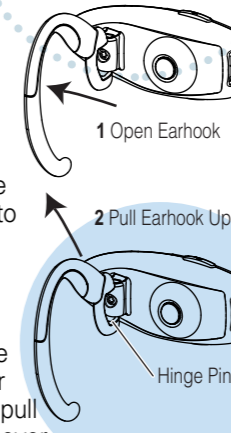
- 1 Open the earhook.
- 2 Loop the earhook over your ear.
- 3 Press the headset to your ear.



CHANGING FOR USE ON OTHER EAR

You can wear your H500 headset on your left or right ear. The headset comes ready for the right ear. To change the headset for the left ear:

- 1 Open the earhook 90 degrees from the headset.
- 2 Gently lift and pull the top of the earhook up and off the upper hinge pin. Then, pull it away to remove it.
- 3 Flip the headset over.
- 4 Hook the bottom of the earhook onto the lower hinge pin, then lift and pull the top of the earhook over the upper hinge pin.

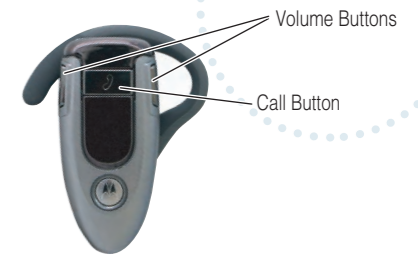


CHANGING VOLUME BUTTON ORIENTATION

If you change your headset to wear on the other ear, you can also change the orientation of the volume buttons:

- 1 Turn the headset power off.
- 2 Press the Call button and the volume button you want to assign as the "volume up" button until the indicator light flashes twice.

The headset power turns on.



MAKING CALLS

Function	Action
Make a voice dial call	Tap the Call button and speak the name after the tone
End a call	Tap the Call button
Receive a call	Tap the Call button
Reject a call	Press and hold the Call button until you hear a beep
Redial last call	Press and hold the Call button until you hear a beep
Answer a second incoming call	Press and hold the Call button (places first call on hold)

Note: Your H500 supports both Handsfree and Headset Profiles. Accessing call functions depends upon which profile your phone supports. See your phone's user's guide for more information.

MAKING CALLS *CONTINUED*

Function	Action
Toggle between two active calls	Press and hold the Call button
Join a 3-way call	Press and hold both Volume buttons
Put an active call on hold or resume a call on hold	Press and hold the Call button until you hear a beep
Transfer a call from the phone to the headset	Tap the Call button
Disable or enable the indicator light	Press and hold both Volume buttons for 3 to 4 seconds
Mute or unmute a call	Tap both Volume buttons

Note: Some features are phone/network dependent.

INDICATOR LIGHTS

The indicator light provides information about your headset status.

With the Charger Plugged In

Headset Indicator	Headset Status
On (steady)	Charging
Off	Charging complete

With No Charger Plugged In

Headset Indicator	Headset Status
Off	Power off
On (steady)	Pairing mode
10 rapid flashes	Pairing successful
Slow pulse	Connected (on a call)
Quick flash	Standby (not on call)

Note: After 5 minutes of inactivity, the light stops flashing to conserve power, but the headset remains in standby mode.

AUDIO TONES

The audio tones provide information about your headset status.

Audio Tone	Headset Status
Single high tone when pressing volume button	Volume at minimum or maximum
Five rapid high tones repeated every 60 sec.	Low battery
No audio indications; deteriorating quality	Out of range
Ring tone	Incoming call
Single high tone	Pairing confirmation
Single low tone	Voice activation
Dual high/low tone	Voice tag not recognized
Single high tone	End call
Low to high tone	Phone network not available
Two ascending tones	Mute enabled
Two descending tones	Mute enabled