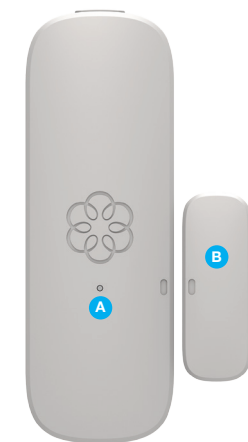
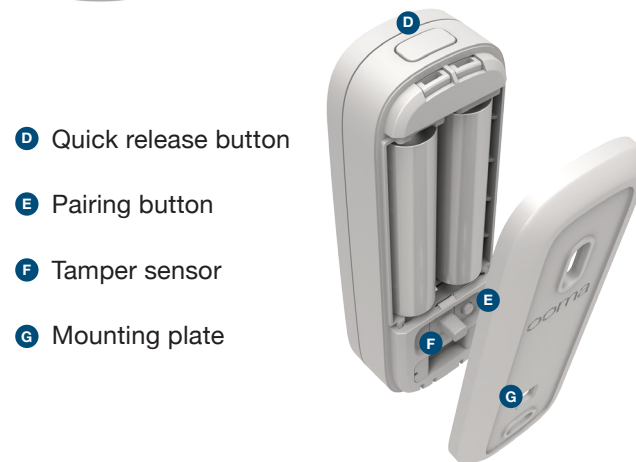


Key Features



- A** Status indicator light
- B** Magnet tab



- D** Quick release button
- E** Pairing button
- F** Tamper sensor
- G** Mounting plate

700-0163-100

Step 1 Pair Your Sensor

To get started, download and install the **Ooma Home Monitoring** app on your iOS or Android device. The app can be found at: ooma.com/app

When the app is installed, log in using your Ooma phone number and My Ooma password. If you forgot your password, reset it at: my.ooma.com

Complete the initial setup in the app, and then follow the instructions on your screen to pair your sensor.



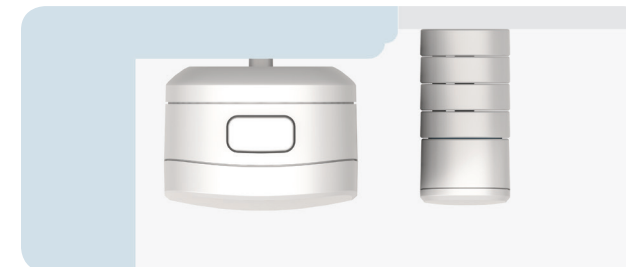
Step 2 Mount Your Sensor

Using the included adhesive pads or screws, mount one piece of the sensor onto the moving part of your door or window, and then mount the other onto your door or window frame. These pieces should be mounted so that when the door or window is closed the dots are no more than 3/4 inch apart.



3/4" maximum

Top view



Keep the front side of both pieces even with each other if possible.

If needed, attach additional risers (included) to raise the height of the magnet tab.



Additional Information

Starting pairing mode

Your sensor automatically enters pairing mode when you insert the batteries. You can also press and hold the pairing button for five seconds to start pairing mode. Status indicator light blinks quickly when in this mode.

Checking battery level

Tap the pairing button to check the battery level. A long flash indicates that the battery is good. A slow blink indicates that the battery is low.

A Status indicator reference

Pairing mode

Quick red flashes



Battery good

Long red flash



Battery low

Short red flashes



Software update

Slow red double flashes



Need Help?

Support articles

www.ooma.com/support

User manuals

www.ooma.com/userguide

Community forum

forums.ooma.com

Live customer care:

1-888-711-6662 (US)

1-866-929-5552 (Canada)

Legal

For warranty, safety, and other legal information, visit ooma.com/legal

This device complies with part 15 of the FCC rules.

Operation is subject to the following two conditions: (1) This device may not cause harmful interference, and (2) This device must accept any interference received, including interference that may cause undesired operation.