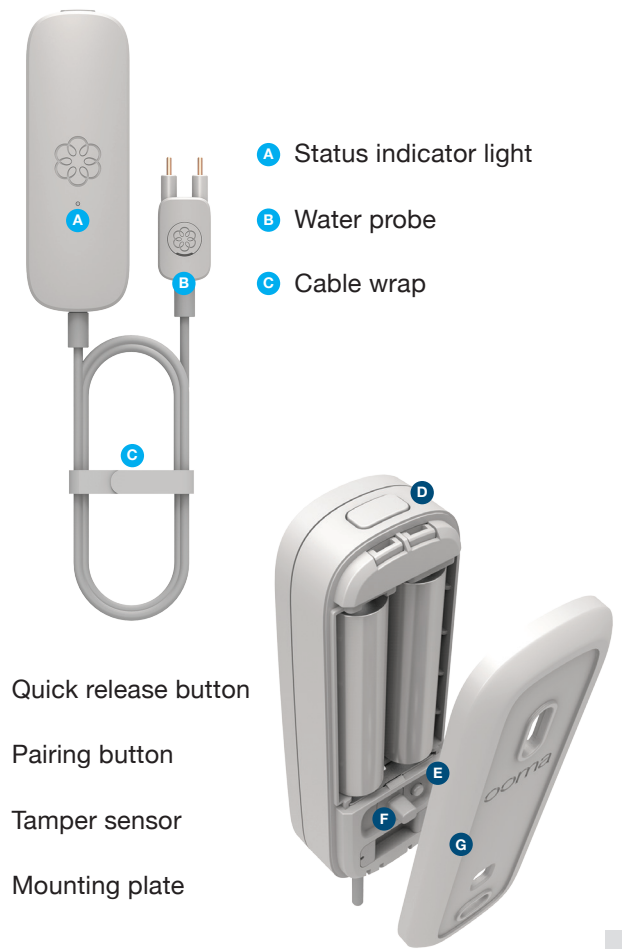


700-0165-100

Key Features



- A** Status indicator light
- B** Water probe
- C** Cable wrap
- D** Quick release button
- E** Pairing button
- F** Tamper sensor
- G** Mounting plate

1

Step 1 Pair Your Sensor

To get started, download and install the **Ooma Home Monitoring** app on your iOS or Android device. The app can be found at: ooma.com/app

When the app is installed, log in using your Ooma phone number and My Ooma password. If you forgot your password, reset it at: my.ooma.com

Complete the initial setup in the app, and then follow the instructions on your screen to pair your sensor.



2

Step 2 Mount Your Sensor

Using the included adhesives pads or screws, mount the large device in a place where it will not come into contact with water (it is not waterproof). Mount the water sensor probe so that it is either standing up or laying down in a position that will allow the two gold probes to make contact with water in the event of a leak.



3



If you are mounting the water probe using screws, remove the screw cap to expose the screw hole.

4

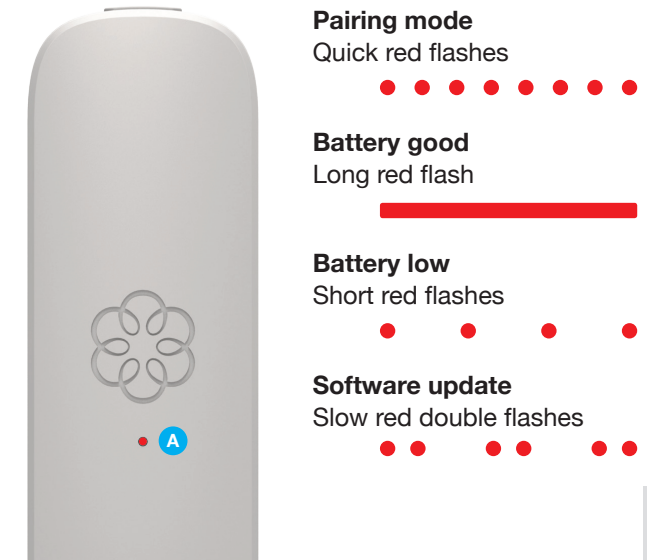
Additional Information

Starting pairing mode

Your sensor automatically enters pairing mode when you insert the batteries. You can also press and hold the pairing button for five seconds to start pairing mode. Status indicator light blinks quickly when in this mode.

Checking battery level

Tap the pairing button to check the battery level. A long flash indicates that the battery is good. A slow blink indicates that the battery is low.



- A Status indicator reference**
- Pairing mode**
Quick red flashes
● ● ● ● ● ● ● ●
- Battery good**
Long red flash
—————
- Battery low**
Short red flashes
● ● ● ●
- Software update**
Slow red double flashes
● ● ● ● ● ●

5

Need Help?

Support articles
www.ooma.com/support

User manuals
www.ooma.com/userguide

Community forum
forums.ooma.com

Live customer care:
1-888-711-6662 (US)
1-866-929-5552 (Canada)

Legal

For warranty, safety, and other legal information, visit ooma.com/legal

This device complies with part 15 of the FCC rules. Operation is subject to the following two conditions: (1) This device may not cause harmful interference, and (2) This device must accept any interference received, including interference that may cause undesired operation.

6