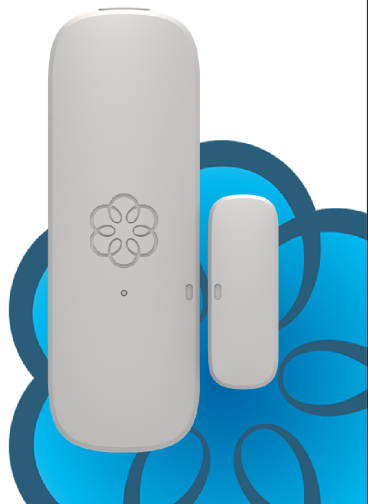


# ooma home monitoring door and window sensor

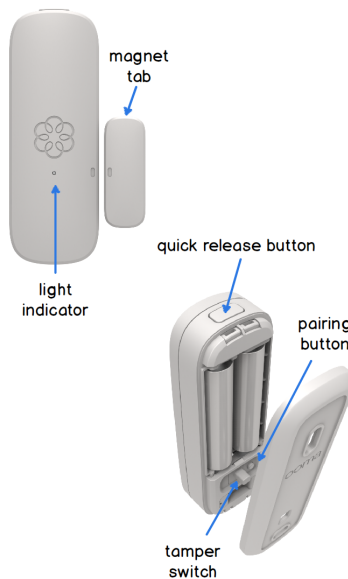
## Quick Start Guide



To get started, download the Ooma Home Monitoring app and complete the initial setup. You can find it at [ooma.com/app](http://ooma.com/app).

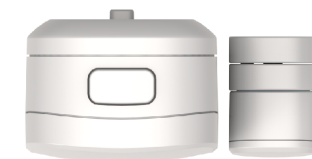


## Mounting Instructions



Using the included adhesive pads or screws, mount one piece onto the moving part of your door or window, and mount the other onto your door or window frame. When your door or window is closed, the dots should be no more than 1 inch apart.

## Top view



Keep the front side of both pieces even with each other if possible.



If needed, attach additional risers (included) to raise the height of the magnet tab.

## Quick Reference

### Pairing Button

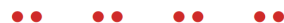
- Tap to check battery level and to page mobile app
  - long flash = battery good
  - ● ● slow blink = battery low
- Press and hold for five seconds to start pairing mode
  - ● ● ● fast blink = pairing mode

### Tamper Switch

Sends you a notification when disengaged.

### Software Update

If your sensor is updating its software, it will blink twice and pause continuously.



## Need Help?

**Support Articles:**  
[www.ooma.com/support](http://www.ooma.com/support)

**User Manuals:**  
[www.ooma.com/userguide](http://www.ooma.com/userguide)

**Community Forum:**  
[forums.ooma.com](http://forums.ooma.com)

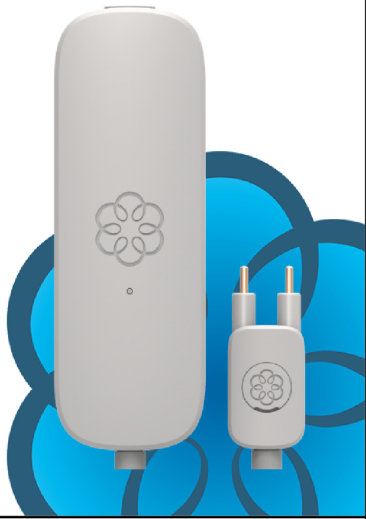
**Live Customer Care:**  
1-888-711-6662 (US)  
1-866-929-6662 (Canada)

## Legal

For warranty, safety, and other legal information, visit [ooma.com/legal](http://ooma.com/legal)

**This device complies with part 15 of the FCC rules.** Operation is subject to the following two conditions: (1) This device may not cause harmful interference, and (2) This device must accept any interference received, including interference that may cause undesired operation.

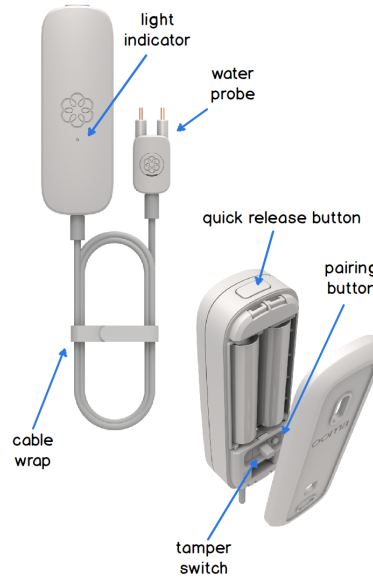
Quick Start Guide



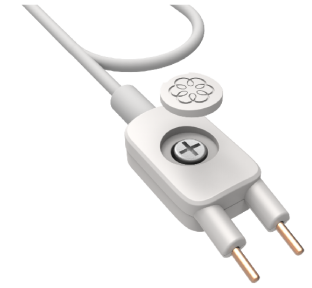
To get started, download the Ooma Home Monitoring app and complete the initial setup. You can find it at [ooma.com/app](http://ooma.com/app).



Mounting Instructions








Using the included adhesive pads or screws, mount the larger device piece somewhere away from where you expect water. (It is not waterproof.) Mount the water sensor probe either standing up or laying down such that the water would make contact with the two gold probes.



If you are mounting the water probe using screws, remove the screw cap to expose the screw hole.

Quick Reference

Pairing Button

-  Tap to check battery level and to page mobile app
-  long flash = battery good
-  slow blink = battery low
-  Press and hold for five seconds to start pairing mode
-  fast blink = pairing mode

Tamper Switch

Sends you a notification when disengaged.

Software Update

If your sensor is updating its software, it will blink twice and pause continuously.



Need Help?

**Support Articles:**  
[www.ooma.com/support](http://www.ooma.com/support)

**User Manuals:**  
[www.ooma.com/userguide](http://www.ooma.com/userguide)

**Community Forum:**  
[forums.ooma.com](http://forums.ooma.com)

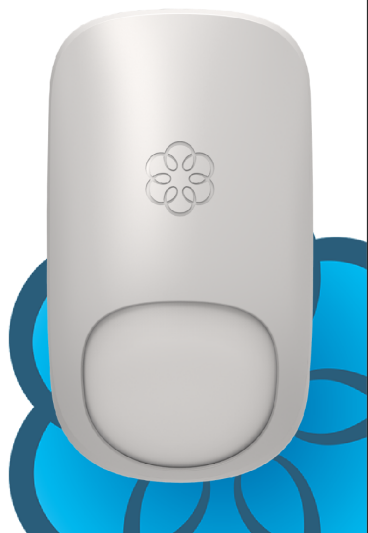
**Live Customer Care:**  
1-888-711-6662 (US)  
1-866-929-6662 (Canada)

Legal

For warranty, safety, and other legal information, visit [ooma.com/legal](http://ooma.com/legal)

**This device complies with part 15 of the FCC rules.** Operation is subject to the following two conditions: (1) This device may not cause harmful interference, and (2) This device must accept any interference received, including interference that may cause undesired operation.

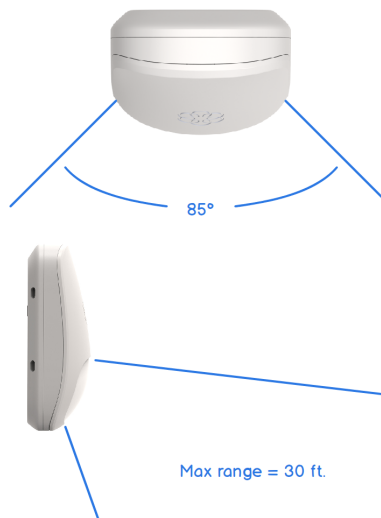
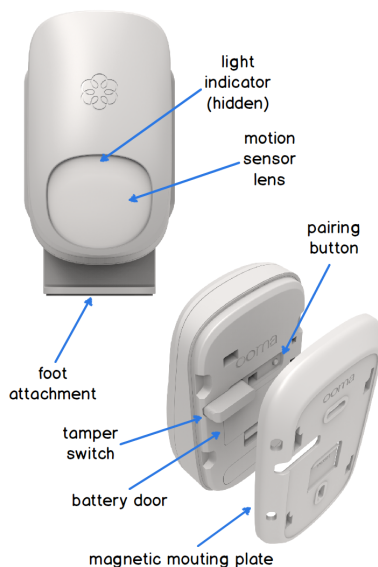
Quick Start Guide



To get started, download the Ooma Home Monitoring app and complete the initial setup. You can find it at [ooma.com/app](http://ooma.com/app).



Mounting Instructions



Use the included adhesive pads or screws to mount the sensor within range of the desired area.




If desired, the motion sensor may be mounted in a 90° corner using these four screw mounts.




The included foot attachment can be used to install the motion sensor on any flat surface without adhesive pads or screws.

Quick Reference


First Time Setup

 First time setup lasts 30 secs. after inserting batteries. Light blinks red until complete.


Pairing Mode

 Press and hold for pairing button for five seconds to start pairing mode. Light quickly blinks green while in this mode.


Pairing Success

 Light will flash green for 3 seconds.


Unpairing Success

 Light will slow blink for 20 seconds.

Motion Sensed

 Light will blink red once when motion is sensed.

Signal Disconnected

 Light will flash red for 10 seconds if signal is disconnected.

Tamper Switch

Sends you a notification when disengaged.

Need Help?

**Support Articles:**  
[www.ooma.com/support](http://www.ooma.com/support)

**User Manuals:**  
[www.ooma.com/userguide](http://www.ooma.com/userguide)

**Community Forum:**  
[forums.ooma.com](http://forums.ooma.com)

**Live Customer Care:**  
1-888-711-6662 (US)  
1-866-929-6662 (Canada)

Legal

For warranty, safety, and other legal information, visit [ooma.com/legal](http://ooma.com/legal)

**This device complies with part 15 of the FCC rules.** Operation is subject to the following two conditions: (1) This device may not cause harmful interference, and (2) This device must accept any interference received, including interference that may cause undesired operation.